

Figure 3-38 Backup Restore

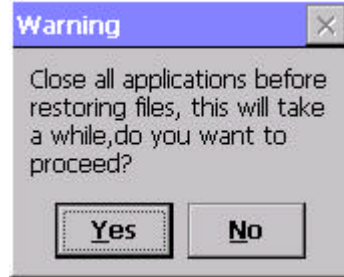
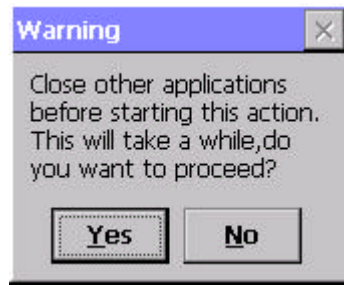


Figure 3-39 Backup & Restore Start

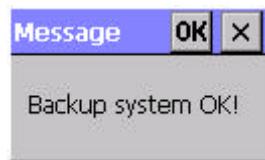


Figure 3-40 Backup OK

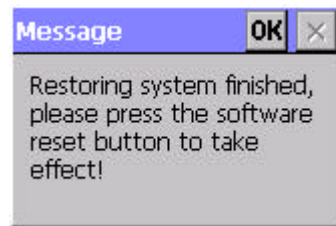
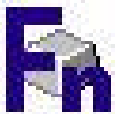


Figure 3-41 Restore OK

### 3.2.5.4 Fn-key Settings

Table 3-23 Fn-Key

ICON	ITEM & FUNCTION	
	<ul style="list-style-type: none"> <li>“AP Settings” Tab(Figure 3-34)</li> </ul>	
	<b>Fn Key</b>	<b>The Application Program of default setting</b>
	F1	Internet Explorer
	F2	Microsoft WordPad
	F3	Inbox
F4	My Computer	

- ✓ To assign your favorite application program to F1, F2, F3 and F4 hot keys.
- ✓ Choose one of F1, F2, F3 and F4 from pull-down list.(**Figure 3-42**)
- ✓ To tap “Browse...” inside “Assign program” applet.
- ✓ Select one application program you want from program list, then, choose “OK”. (**Figure 3-43**)
- ✓ To tap “Default” to return back to default setting. (**Figure 3-42**)

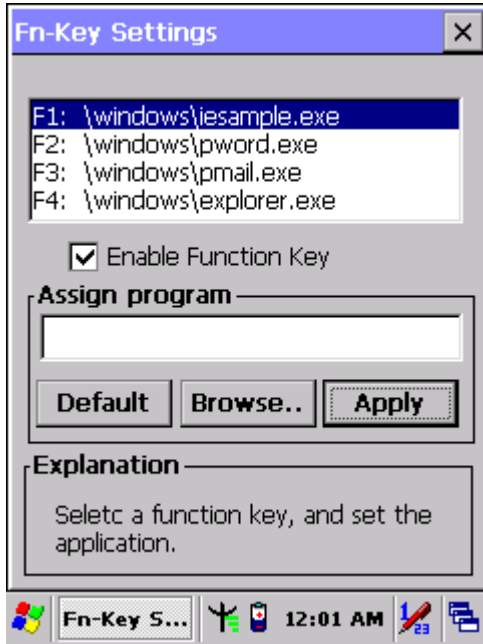


Figure 3-42 Fn-Key Settings

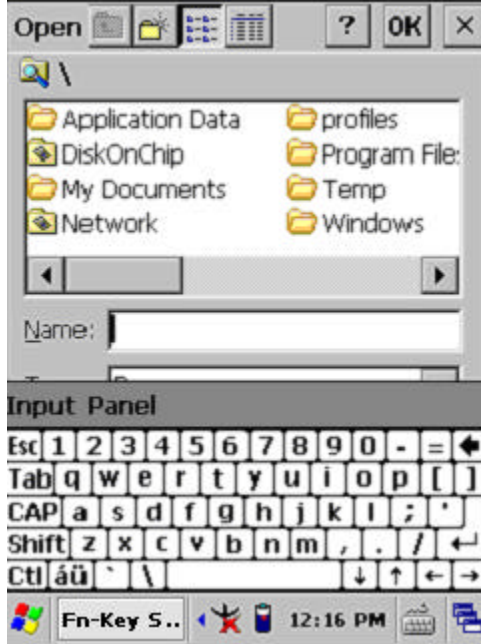



Figure 3-43 Fn-Key Settings


### 3.2.6 Date/Time

Table 3-25 Date/Time

ICON	ITEM & FUNCTION
 Date/Time	<ul style="list-style-type: none"> <li>• “Date/Time” Tab :( <b>Figure 2-14</b>)</li> </ul> <hr style="border-top: 1px dashed black;"/> <ul style="list-style-type: none"> <li>✓ Please see the detail information of <b>2.5.1 Setting Time and Date on P2-21</b></li> </ul>

### 3.2.7 Dialing Properties

Table 3-26 Dialing properties

ICON	ITEM & FUNCTION
 <p>Dialing</p>	<ul style="list-style-type: none"> <li>● <b>“Dialing Properties” Tab : ( Figure 3-44)</b></li> <li>✓ In the <b>When dialing from</b> list, select the <b>“Location”</b> where you want to change settings.(Figure 3-45)</li> <li>✓ To create a new location, select <b>“New”</b>. Enter the name of the location, and then select <b>“OK”</b>.(Figure 3-46)</li> <li>✓ Enter or edit the area code and local country code as needed.</li> <li>✓ In <b>Dial using</b>, select <b>“Tone dialing”</b> or <b>“Pulse dialing”</b>. Most phone lines are tone.</li> <li>✓ To automatically disable call waiting, select <b>“ Disable call waiting by dialing”</b>, select the appropriate number sequence in the list, or enter a new sequence.</li> </ul> <hr/> <ul style="list-style-type: none"> <li>● <b>Editing dialing patterns (Figure 3-47)</b></li> <li>✓ Using the codes listed in the topic; revise the dialing patterns as needed.</li> </ul> <p><b>Notes:</b></p> <ul style="list-style-type: none"> <li>■ If you need to use character other than the ones listed here, use manual dialing.</li> <li>■ Hyphens and spaces in dialing strings are ignored.</li> <li>■ Some modems may not respond to the following characters, even though your device lets you add them to the dial string.</li> </ul>

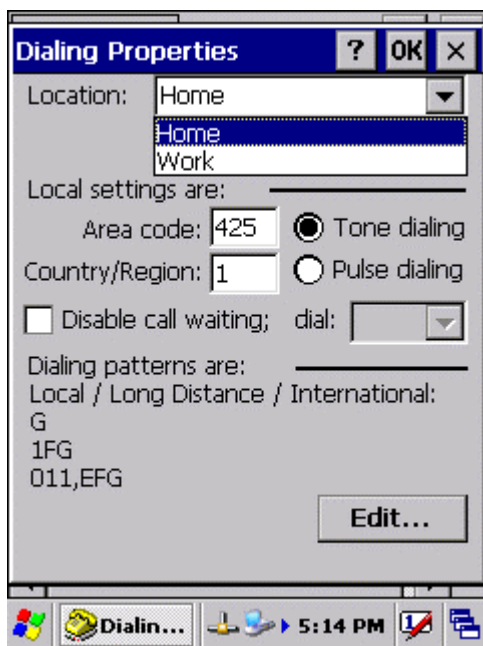


Figure 3-44 Dialing Properties



Figure 3-45 Dialing Properties

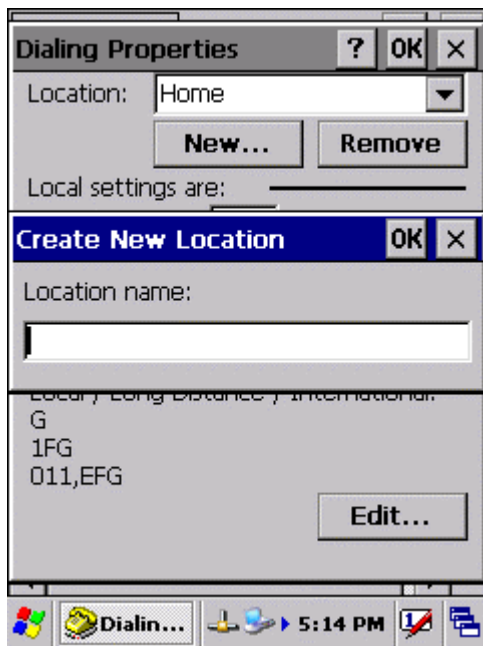


Figure 3-46 Dialing Properties

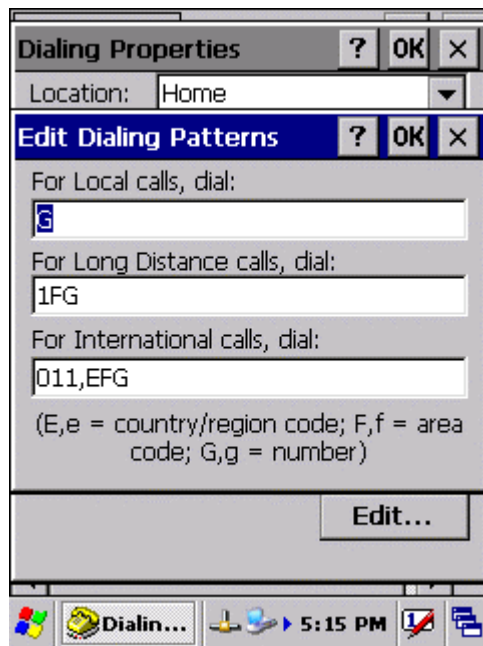



Figure 3-47 Dialing Properties

### 3.2.8 Display Properties

Table 3-27 Display properties

ICON	ITEM & FUNCTION
 Display	<ul style="list-style-type: none"> <li>● <b>“Background” Tab : ( Figure 3-48)</b></li> <li>✓ From the <b>“Image”</b> list, select an image you want as the background of the desktop.(<b>Figure 3-49</b>)</li> <li>✓ To locate an image in another folder, select <b>“Browse”</b>.(<b>Figure 3-50</b>)</li> <li>✓ To have the image cover the entire background, select <b>“ Tile image on background”</b></li> <li>● <b>“Appearance” Tab(Figure 3-51)</b></li> </ul>

- ✓ Change the color scheme :( **Figure 3-52**)
  - From the” **Scheme**” list, select a scheme.
  - View your choice in the preview box. If you like the scheme, select “**Apply**”.
- ✓ Create a custom color scheme:
  - From the “**Item**” list, select a display item.
  - From the “**Basic colors**” list, select a color, and select “**OK**”.
  - View your color selection(s) in the Preview box.
  - To save the scheme, select “**Save**”.
  - In the “**Save this color scheme as**” box, enter a name for the scheme, and select “**OK**”.
  - Select “**Apply**”.

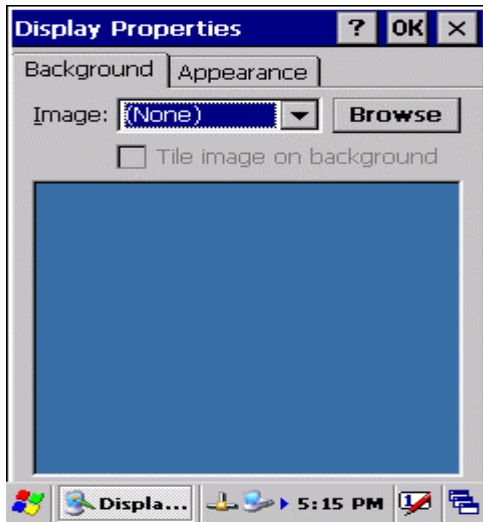


Figure 3-48 Display properties



Figure 3-49 Display properties

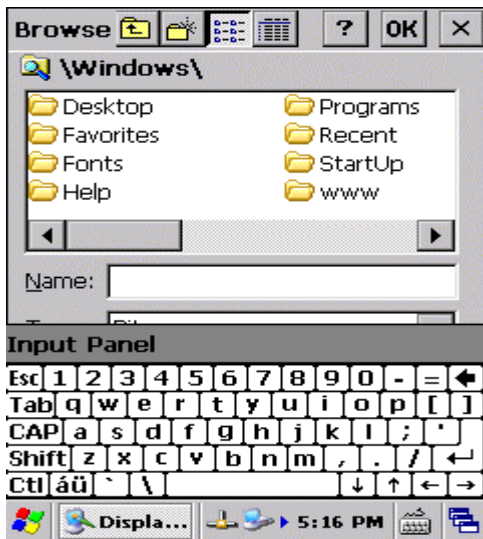


Figure 3-50 Display properties

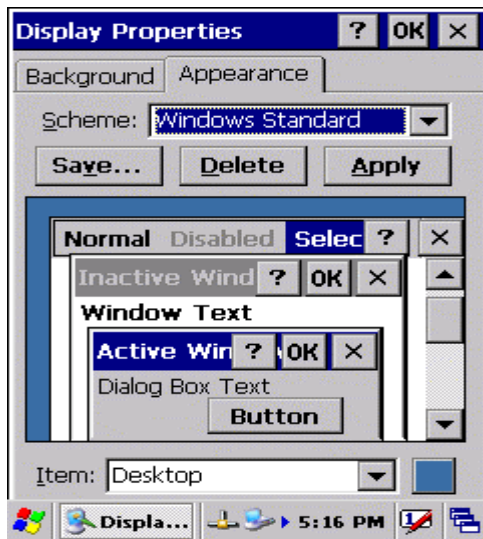


Figure 3-51 Display properties

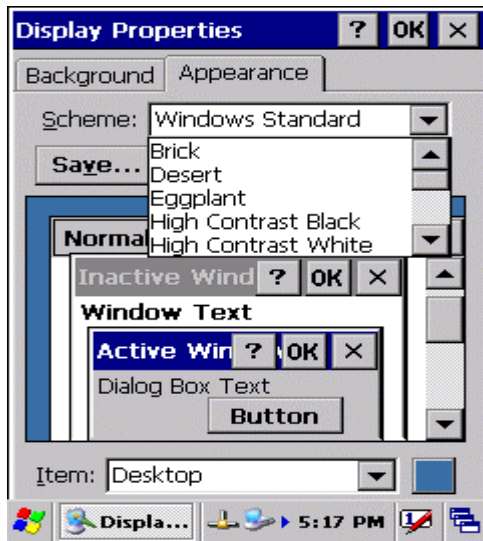



Figure 3-52 Display properties

### 3.2.9 Input Panel

Table 3-28 Display properties

ICON	ITEM & FUNCTION
 Input Panel	<ul style="list-style-type: none"> <li>● <b>“Input panel” Tab :( Figure 3-53)</b></li> <li>✓ Select the input method you want to change.</li> <li>✓ To change the <b>Soft Keyboard Options</b> , tap <b>“Option”</b> (Figure 3-54) .</li> </ul>
	<ul style="list-style-type: none"> <li>● <b>“Input panel” Tab :</b></li> <li>✓ Change the soft keyboard options as desired, selecting from:               <ul style="list-style-type: none"> <li>➢ Large or small keys</li> <li>➢ Using gestures for space, black-space shift, and enter.</li> </ul> </li> <li>✓ To exit the <b>soft keyboard Options</b>, press <b>“OK”</b> on the control bar, or press the <b>&lt;Enter&gt;</b> key on the keypad.</li> <li>✓ To exit the <b>Input Panel</b>, press <b>“OK”</b> on the control bar, or press the <b>&lt;Enter&gt;</b> key on the keypad.</li> </ul>

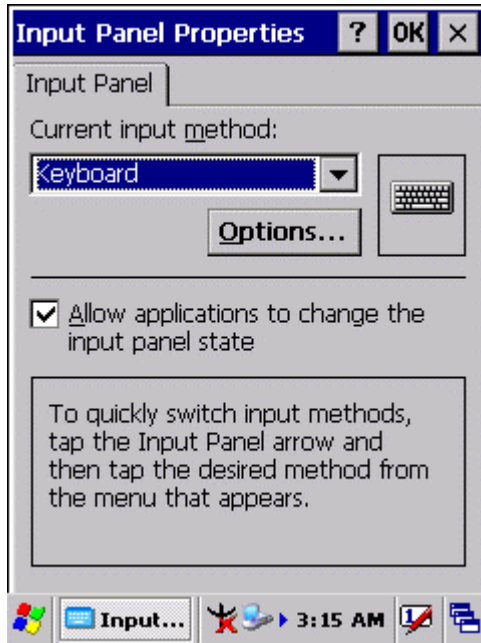


Figure 3-53 Input Panel Properties

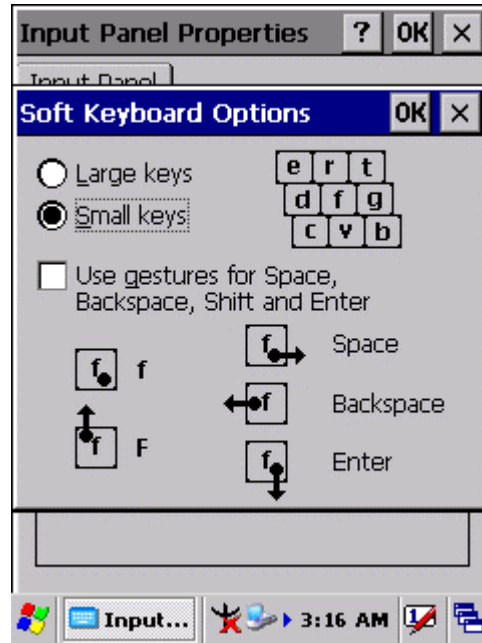



Figure 3-54 Input Panel Properties

### 3.2.10 Internet Options

Table 3-29 Internet Options

ICON	ITEM & FUNCTION
 Internet Options	<ul style="list-style-type: none"> <li>● “General” Tab : ( Figure 3-55)</li> </ul>
	<ul style="list-style-type: none"> <li>✓ Type in the URL of desired start page and the desired search engine. You also change the <b>Cache Size</b>, <b>clear the Cache</b> and <b>Clear the History</b>..</li> </ul>
	<ul style="list-style-type: none"> <li>● “Connection” Tab :( Figure 3-56)</li> </ul>
	<ul style="list-style-type: none"> <li>✓ Modify the network access setting as desired.</li> </ul>
<ul style="list-style-type: none"> <li>● “Security” Tab (Figure 3-57)</li> </ul>	
<ul style="list-style-type: none"> <li>✓ Modify the security settings as desired. You can enable any of the following by tapping the checkbox:               <ul style="list-style-type: none"> <li>➤ Allow cookies</li> <li>➤ Allow TLS 1.0 security</li> <li>➤ Allow SSL 2.0 security</li> <li>➤ Allow SSL 3.0 security</li> <li>➤ Warn when switching across secure and insecure areas.</li> </ul> </li> </ul>	
<ul style="list-style-type: none"> <li>● “Advanced” Tab (Figure 3-58)</li> </ul>	



- ✓ Modify the security settings as desired. You can enable any of the following by tapping the checkbox:
  - Display Image in pages
  - Play sounds in pages
  - Enable scripting
  - Display a notification about every script error
  - Underline links-
    - Never
    - Always
    - Hover



Figure 3-55 Internet Settings

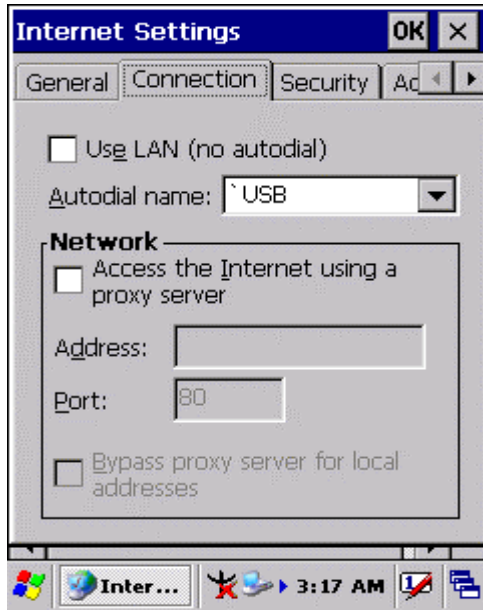


Figure 3-56 Internet Settings

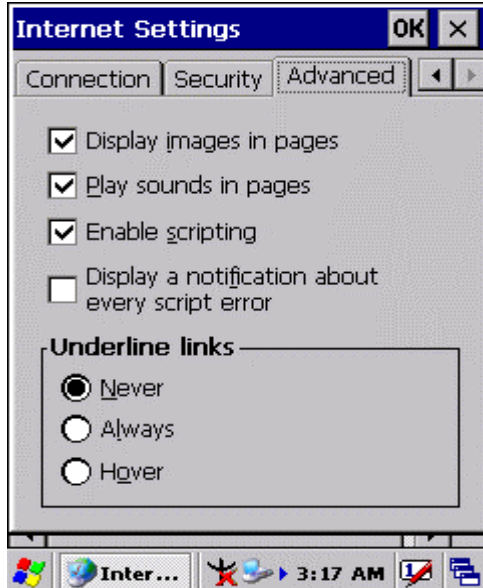
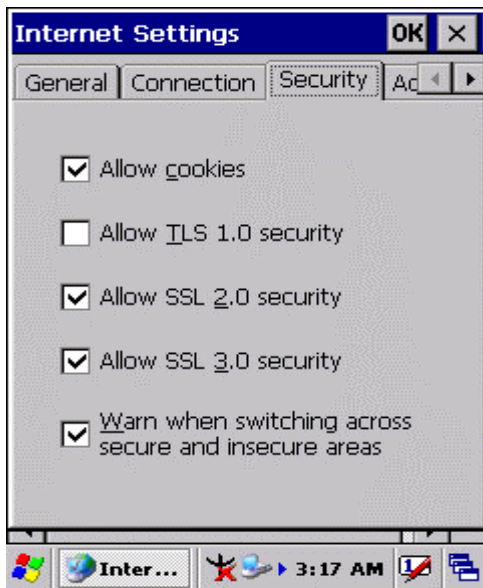





Figure 3-57 **Internet Settings**

Figure 3-58 **Internet Settings**

### 3.2.11 Keyboard

Table 3-30 **Keyboard**

ICON	ITEM & FUNCTION
 Keyboard	<ul style="list-style-type: none"> <li data-bbox="427 1615 1347 1659">• <b>“Repeat” Tab :</b>( <b>Figure 3-59</b>)</li> <li data-bbox="427 1659 1347 1749">✓ To change the amount of time between depressions before repetition starts, adjust the <b>Repeat delay</b> slider</li> <li data-bbox="427 1749 1347 1794">✓ To change the repeat rate, adjust the <b>Repeat rate</b> slider.</li> <li data-bbox="427 1794 1347 1839">✓ Test your new setting.</li> <li data-bbox="427 1839 1347 1883">✓ Tap “ <b>OK</b>” to exit the “<b>Keyboard</b>” Tab.</li> </ul>

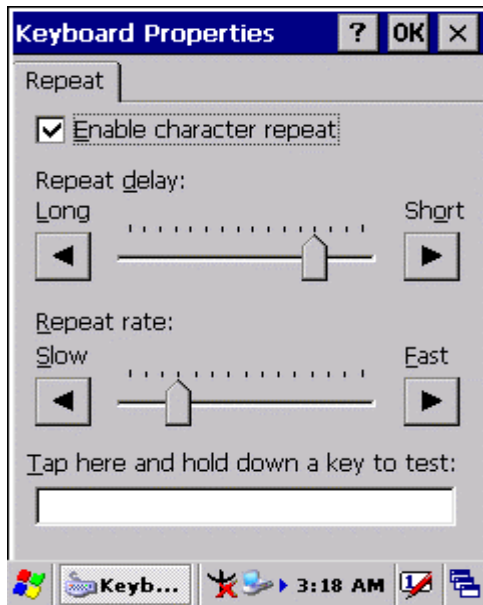



Figure 3-59 Keyboard Properties

### 3.2.12 Network and Dial-up Connections

Table 3-31 Network and Dial-up Connections

ICON	ITEM & FUNCTION
 <p>Network and Dial-up Co...</p>	<ul style="list-style-type: none"> <li>● <b>“Connection” Tab :</b></li> <li>✓ To create a <b>“Dial-up Connection”</b>:               <ul style="list-style-type: none"> <li>➢ Double-tap the <b>“Make New connection”</b>.</li> <li>➢ In the <b>“Make New Connection”</b> dialog box, enter a name for the connection.</li> <li>➢ Select <b>“Dial-Up Connection”</b>.</li> <li>➢ Select the <b>“Next”</b> button.</li> <li>➢ Select the modem you want use.</li> <li>➢ Select <b>“Configure”</b></li> <li>➢ Under <b>“Connection Reference”</b>, use the default settings provided. If you can't connect using these settings, see your ISP or network administrator for specific information. If you want to always enter a phone number before connecting, Select <b>“Manual Dial”</b>. Select <b>“OK”</b>.</li> </ul> </li> </ul>