

- Select **“TCP/IP Settings”**. In the **“General”** tab, ensure **“Use Server-assigned IP address”** is selected. In the **“Name Servers”** tab, ensure **“Use Server-assigned addresses”** is selected, and select **“OK”**. If you are unable to connect with these default settings, see your ISP or network administrator for specific TCP/IP information.
- Select the **“Next”** button and type the telephone number.
- Select the **“Finish”** button.

The connection you just created appears as an icon in the **“Network and Dial-up Connections”** folder.

- ✓ Set up a **point-to-Point Protocol(PPP)** account with an ISP and obtain the following information:
 - Access telephone number
 - User name
 - Password

Once you have established an account, create a new connection on your device. When creating this connection, you should be able to use all of the default TCP/IP settings provided in the Make New Connection Wizard. If you can't connect using the default settings, contact your ISP or access your ISP's Web site for specific TCP/IP information as well as primary and secondary DNS address.

- ✓ **Modify connection setting**
 - Select **Start > Settings > Network and Dialup Connections**
 - Select the icon for connection settings you want to modify.
 - Select **File > Properties**, or double- tap the appropriate icon.
 - Select desired options. There may be additional settings that depend on the connection. To modify, select the icon and select the icon and select **Advanced Settings...** from the menu.

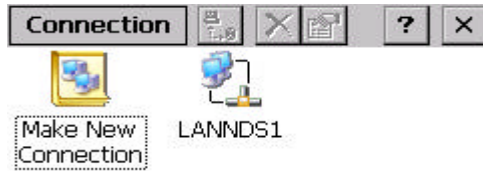


Figure 3-60 Network and Dial-up Connections

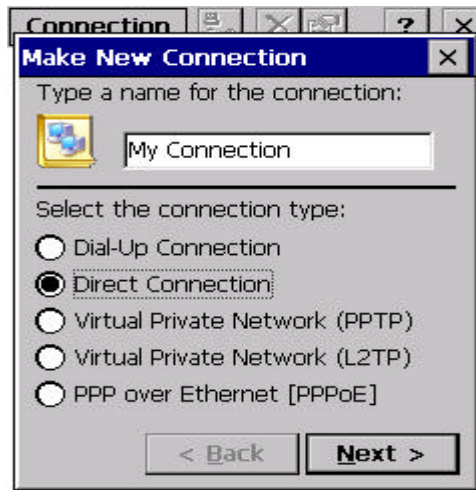


Figure 3-61 Network and Dial-up Connections



Figure 3-62 Network and Dial-up Connections



Figure 3-63 Network and Dial-up Connections



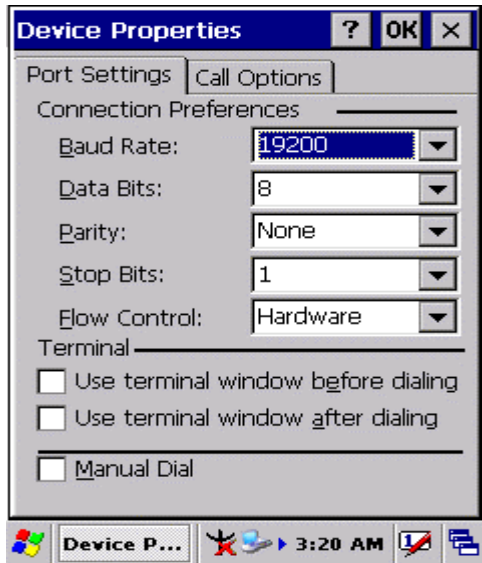


Figure 3-64 Network and Dial-up Connections

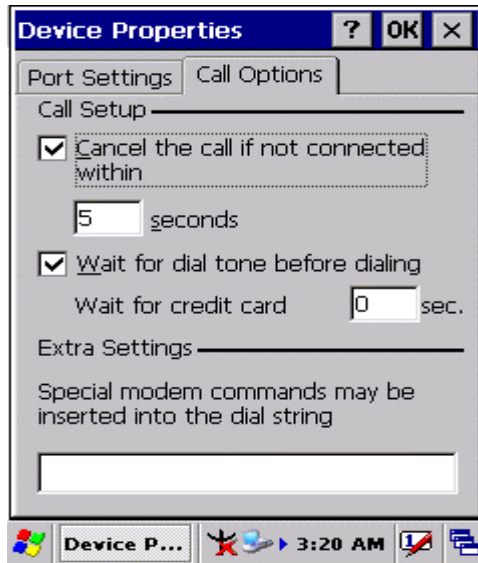


Figure 3-65 Network and Dial-up Connections

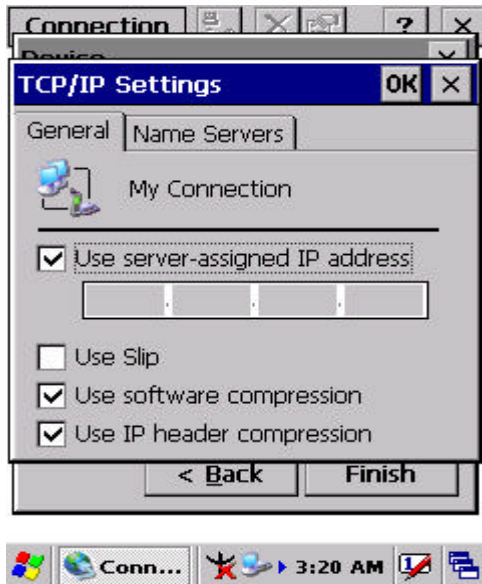


Figure 3-66 Network and Dial-up Connections

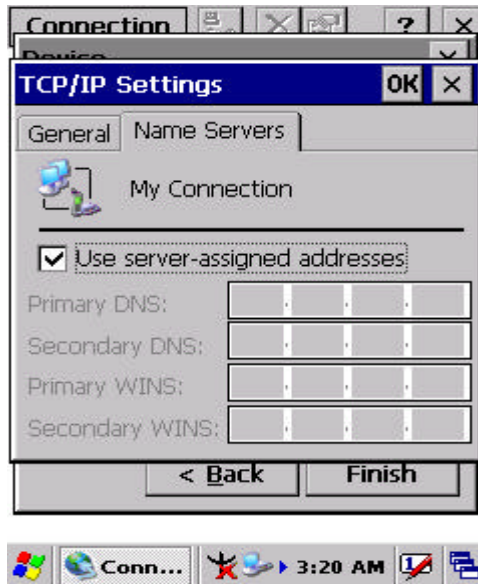


Figure 3-67 Network and Dial-up Connections

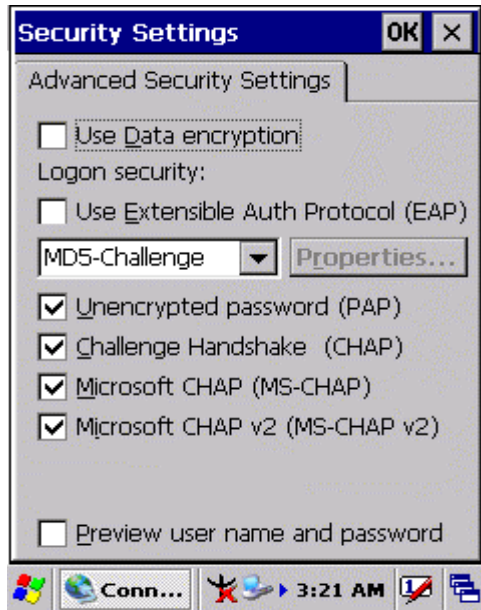


Figure 3-68 Network and Dial-up Connections

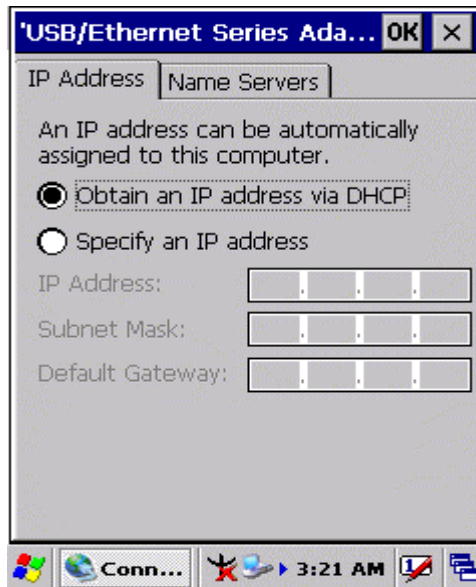


Figure 3-69 Network and Dial-up Connections

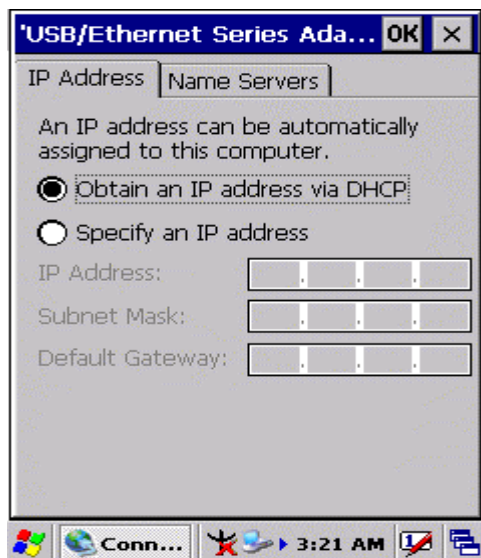


Figure 3-70 Network and Dial-up Connections

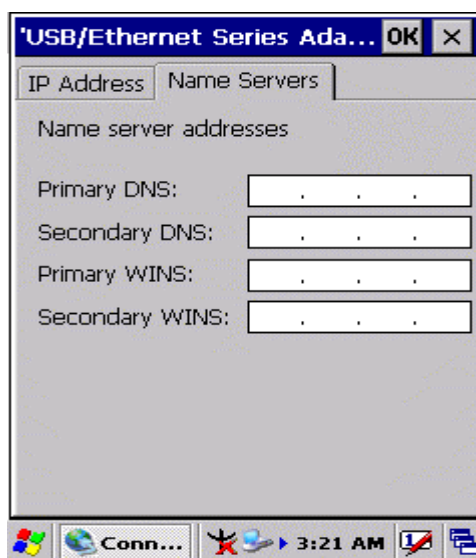



Figure 3-71 Network and Dial-up Connections

3.2.13 Owner

Table 3-32 Owner

ICON	ITEM & FUNCTION
	<ul style="list-style-type: none"> • “Identification” Tab : (Figure 3-74)

 Owner	<ul style="list-style-type: none"> • “Identification” Tab : (Figure 3-74)
	<ul style="list-style-type: none"> • “Network ID” Tab: (Figure 3-75)
	<ul style="list-style-type: none"> ✓ Enter the information displayed when you start your device to “Display Owner Identification” at Power On.
	<ul style="list-style-type: none"> ✓ To set up identification for remote networks, see Setting up remote

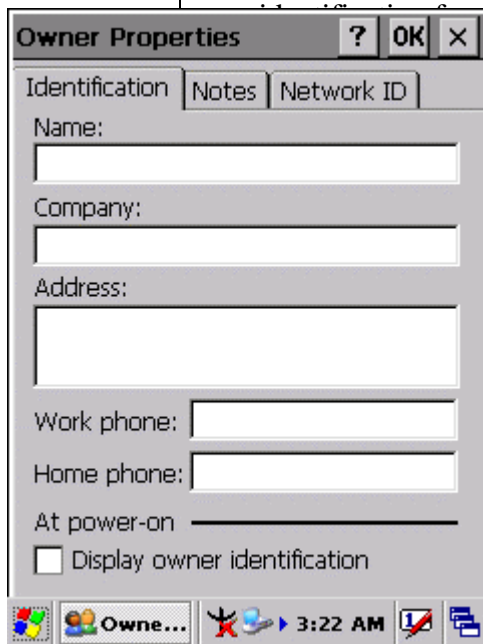


Figure 3-72 Owner Properties

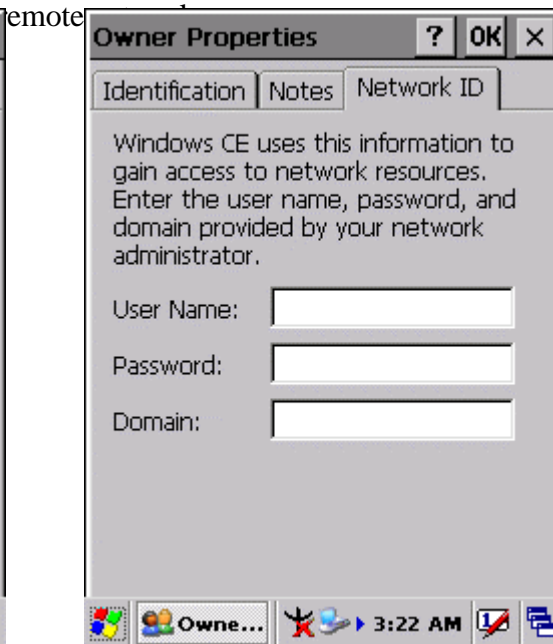


Figure 3-73 Owner Properties

3.2.14 Password

Table 3-33 Password


ICON	ITEM & FUNCTION
	<ul style="list-style-type: none"> • “Password Setting” Tab : (Figure 3-76) ✓ Enter the password ✓ In the “Confirm password” box, enter the password again. ✓ To require the password on startup, select “Enable password protection at power- on”. and/or select “Enable password protection for screen saver” ✓ To exit the Password control panel, press “OK” from the control bar, or press the <Enter> key on the keypad.



Figure 3-74 Password Properties

3.2.15 PC Connection

Table 3-34 PC Connection

ICON	ITEM & FUNCTION
 PC Connection	<ul style="list-style-type: none"> <li data-bbox="427 1288 1335 1321">● “PC Connection” Tab : (Figure 3-77) <li data-bbox="427 1332 1335 1411">✓ Select the first checkbox to enable direct connections to the desktop computer. (Figure 3-77) <li data-bbox="427 1422 1335 1500">✓ Tap the “Change Connection...” button to modify the connection method from USB or Serial. (Figure 3-78) <li data-bbox="427 1512 1335 1590">✓ To exit the “Change Connection” dialog, press “OK” from the control bar, or press the <Enter> key on the keypad. <li data-bbox="427 1601 1335 1680">✓ To exit the “PC Connection” properties control panel, press “OK” from the control bar, or press the <Enter> key on the keypad.

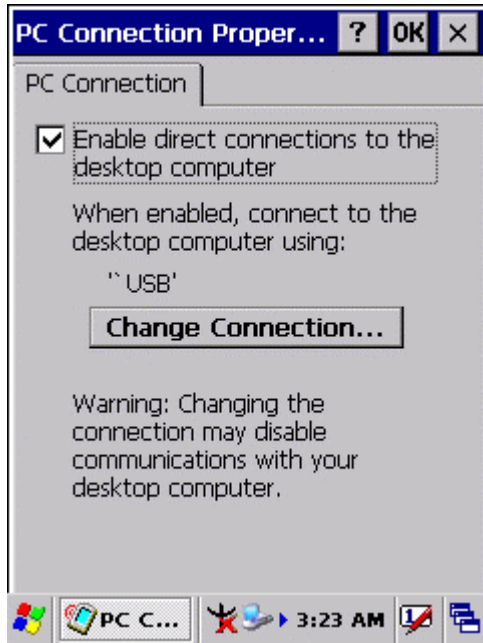


Figure 3-75 PC Connection

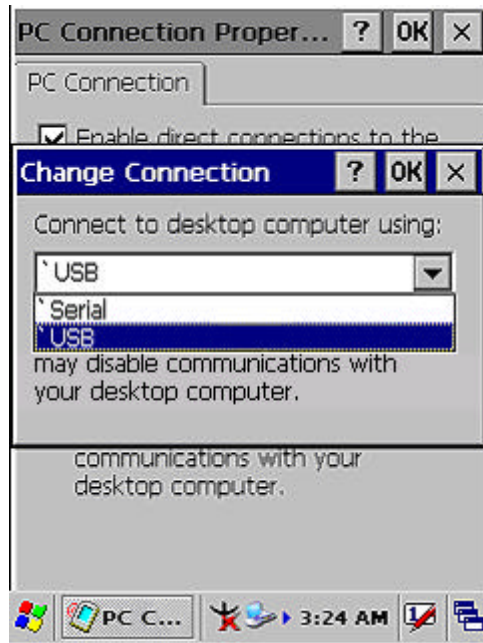






Figure 3-76 PC Connection

3.2.16 Power

Table 3-35 Power

ICON	ITEM & FUNCTION
 Power	<ul style="list-style-type: none"> ● “Battery” Tab : (Figure 3-79) ✓ Provide change level indicators for Main battery and Backup battery. ✓ Provide remaining power capacity of main battery. ✓ If a “Main Batteries very Low” warning message shows, the remaining battery life is around 30 minutes to SC600 shuts down. (Figure 3-83) ✓ The PDT will shutdown during the main batteries capacity is around 0% ✓ To exit Battery control panel, press “OK” from the command bar, or press <Enter> key on keypad. ● “ Schemes” Tab: (Figure 3-80)

	<ul style="list-style-type: none"> ✓ The Scheme Tab allows you to determine the time to switch state to Suspend mode when using either Battery Power or AC Power. ✓ Select Battery Power or AC Power as the power scheme from the pull-down list.(Figure 3-80) ✓ Select the time to suspend mode from the pull-down list. (Figure 3-81)
	<ul style="list-style-type: none"> ● “Device Status” Tab: (Figure 3-82)
<p>Note:</p>	<p>Provide power level of device – The power level ranges from “ High(D0)” which means the device is at the highest power level to “Off(D4)” which means the device is at the lowest power level.</p>
	<p>This ICON inside the Task Bar shows that AC adapter provides power to the PDT</p>
	<p>The ICON inside the Task Bar shows that Main Batteries provides the power to the PDT.</p>
	<p>The ICON inside the Task Bar shows that AC adapter provides the power to the PDT and is charging the main batteries..</p>

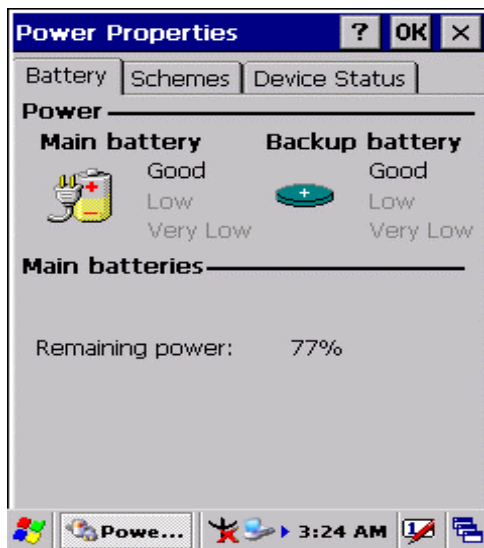


Figure 3-77 Power

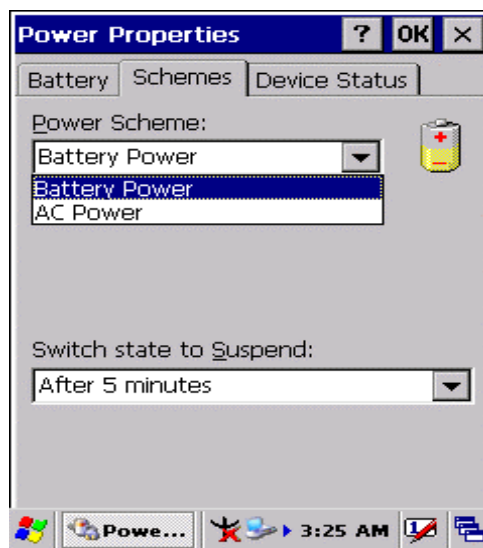


Figure 3-78 Power

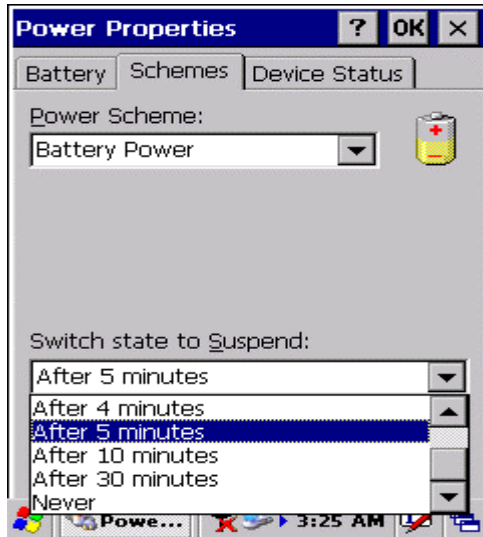


Figure 3-79 Power

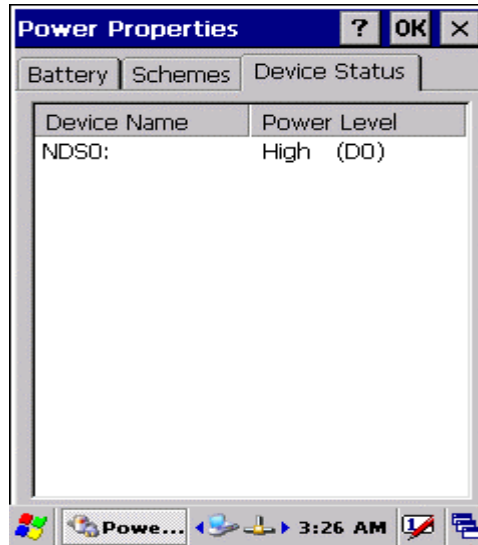


Figure 3-80 Power

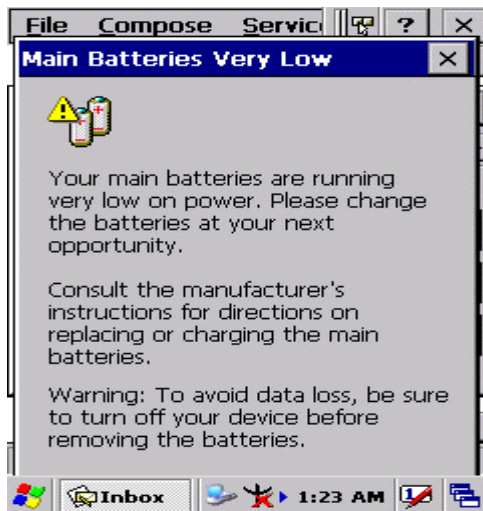



Figure 3-81 Power

3.2.17 Regional Settings

Table 3-36 Regional Settings

ICON	ITEM & FUNCTION
 <p>Regional Settings</p>	<ul style="list-style-type: none"> ● “Region” Tab : (Figure 3-84) ✓ Select the desired location/language. ✓ Review the Appearance samples in the bottom half of the screen. ✓ Select the Tab at the top for any settings you wish to change, Options to modify include Number, Currency, Time, and Date.

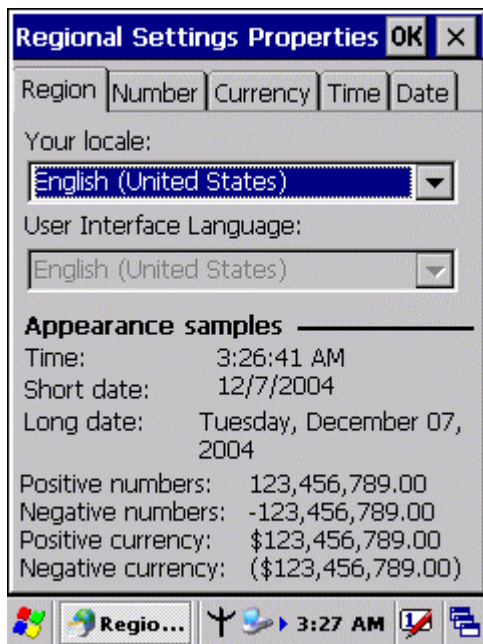



Figure 3-82 Regional Settings

3.2.18 Remove Programs

Table 3-37 Remove Programs

ICON	ITEM & FUNCTION
 Remove Programs	<ul style="list-style-type: none"> ● “Remove Programs” Tab : ✓ Only user installed programs can be removed. ➤ Select the program you wish to remove from the list and press “remove” button.