

	Set 1	Set 2	Set 3	Set 4	Set 5
Plessey / MSI	V	V	D	P	M
Code 11	J	J	J	J	J
Codabar / NW 7	F	N	X	N	F
Matrix 2 of 5	E	G	G	G	S
Code 39 / Code 32	A	C	Y	M	A
Code 93	I	L	L	L	G
Code 128	H	K	K	K	C
Code 4	U	U	U	U	U
Korea Code 3 of 5	R	R	R	R	R
RSS	R	R	R	R	R
UCC128 / EAN128	W	W	W	W	W

3.2.1.4 BarCode Setup

- A. First select barcode type then select barcode to setting.
- B. Press “**Default**” button to reset all configuration setting of this barcode into default values.
- C. Press “**Apply**” button to be decided setting of this barcode.

Please see 3.2.2 Symbolologies List for more detail information of each Barcode.

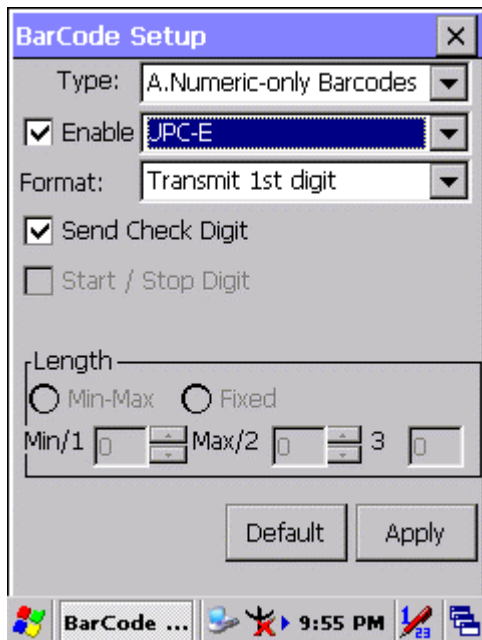


Figure 3-5 BarCode Setup

3.2.2 Symbologies List

A Type -- Numeric-only Barcodes

3.2.2.1 UPC-E

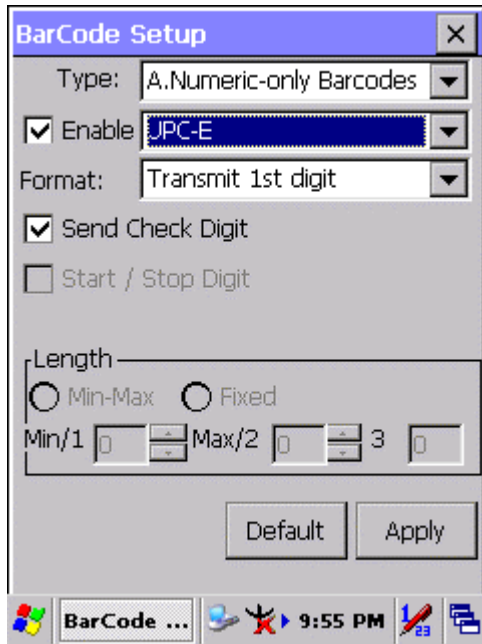


Figure 3-6 UPC-E

Table 3-5 UPC-E Explaining

Item		Explaining
Format	Ignore 1st digit	Do not transmit 1st digit by barcode.
	Transmit 1st digit	Transmit 1st digit by barcode.
<input checked="" type="checkbox"/>	Send Check Digit	Whether send check digit by barcode.

3.2.2.2 UPC-A

UPC-A movements together with EAN-13, so only Enable EAN-13 then UPC-A will be Enable, too.

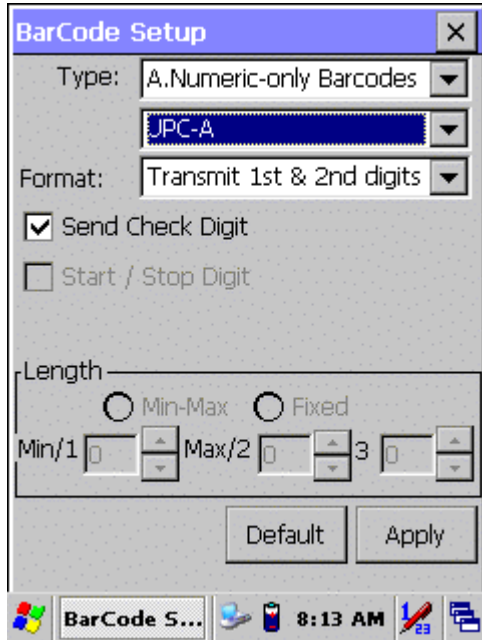


Figure 3-7 UPC-A

Table 3-6 UPC-A Explaining

Item		Explaining
Format	Ignore 1st & 2nd digits	Do not transmit 1st digit by barcode.
	Transmit 1st digit	Transmit 1st digit by barcode.
	Transmit 2nd digit	Transmit 2nd digit by barcode.
	Transmit 1st & 2nd digits	Transmit 1st & 2nd digits by barcode.
<input checked="" type="checkbox"/> Send Check Digit		Whether send check digit by barcode.

3.2.2.3 EAN-13 / ISBN

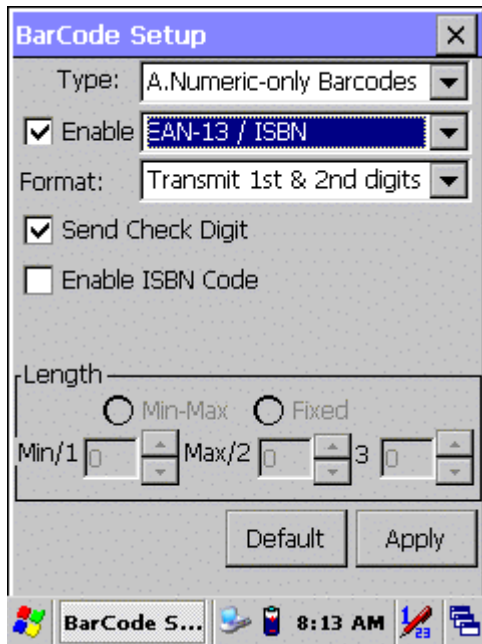


Figure 3-8 EAN-13 / ISBN

Table 3-7 EAN-13 / ISBN Explaining

Item		Explaining
Format	Ignore 1st & 2nd digits	Do not transmit 1st digit by barcode.
	Transmit 1st digit	Transmit 1st digit by barcode.
	Transmit 2nd digit	Transmit 2nd digit by barcode.
	Transmit 1st & 2nd digits	Transmit 1st & 2nd digits by barcode.
<input checked="" type="checkbox"/> Send Check Digit		Whether send check digit by barcode.
<input type="checkbox"/> Enable ISBN Code		Whether use this ISBN Code.

3.2.2.4 EAN-8/JAN-8

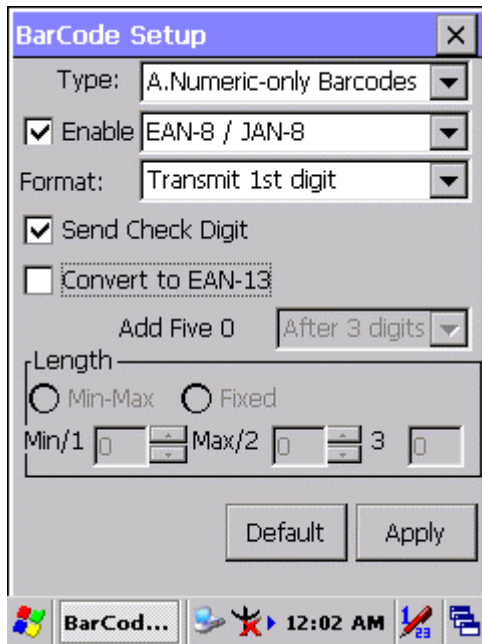


Figure 3-9 EAN-8/JAN-8

Table 3-8 EAN-8/JAN-8 Explaining

Item		Explaining	
Format	Ignore 1st digit	Do not transmit 1st digit by barcode.	
	Transmit 1st digit	Transmit 1st digit by barcode.	
<input checked="" type="checkbox"/>	Send Check Digit	Whether send check digit by barcode.	
<input type="checkbox"/>	Convert to EAN-13	When this option is selected the scanner will convert UPC-E to UPC-A by transmitting five zeroes ...	
	Add five 0	Ahead of code	Add five zeroes at prefix of the barcode.
		After 3 digits	Add five zeroes from 4th digits.