

### 3.2.2.10 Codabar / NW7

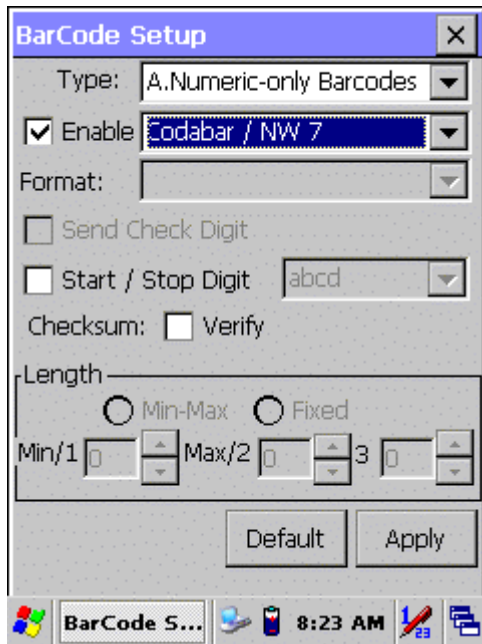


Figure 3-15 Codabar / NW7

Table 3-14 Codabar / NW7 Explaining

Item		Explaining
<input type="checkbox"/> Start / Stop Digit	ABCD	Whether transmit Start & Stop Digit.  Start / Stop transmit type
	<b>abcd</b>	
	TN*E	
	tn*e	
Checksum	<input type="checkbox"/> Verify	Whether verify checksum by barcode.

### 3.2.2.11 Matrix 2 of 5

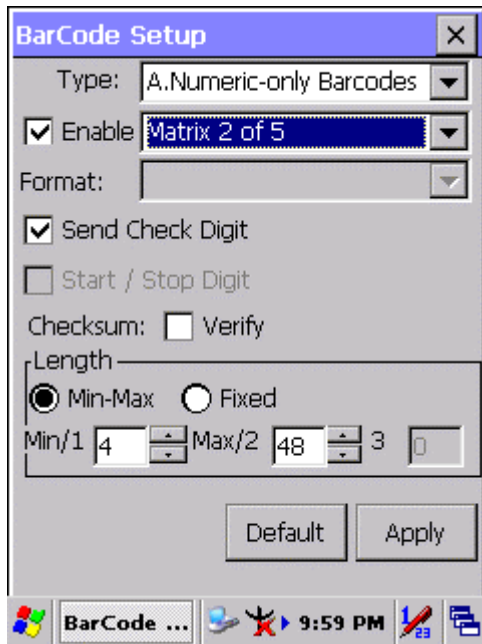


Figure 3-16 Matrix 2 of 5

Table 3-15 Matrix 2 of 5 Explaining

Item		Explaining
<input checked="" type="checkbox"/>	Send Check Digit	Whether send check digit by barcode.
Checksum	<input type="checkbox"/> Verify	Whether verify checksum by barcode.
Length	<input checked="" type="radio"/> Min-Max (Default: 4 / 48)	Min Length can be set from 4 to 48
		Max Length can be set from 4 to 48
	<input type="radio"/> Fixed	Length 1 can be set from 4 to 48
		Length 2 can be set from 4 to 48
		Length 3 can be set from 4 to 48

## B Type -- Alphanumeric Barcodes

### 3.2.2.12 Code39 / Code32

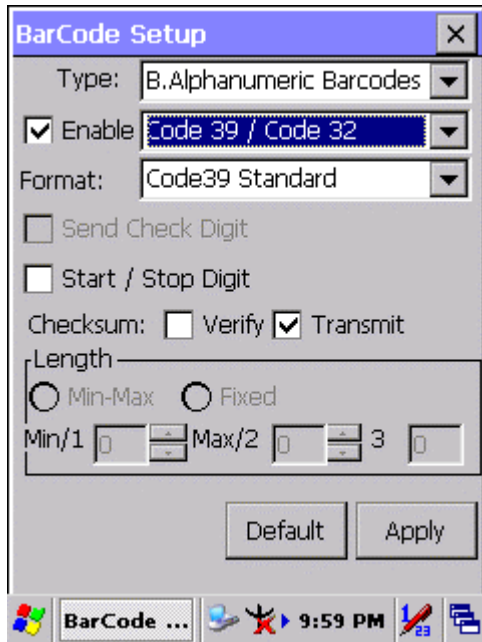


Figure 3-17 Code39 / Code32

Table 3-16 Code39 / Code32 Explaining

Item		Explaining
Format	<b>Code39 Standard</b>	Enable Code 39 Standard characters
	Code39 Full ASCII	Enable Code 39 Full ASCII character
	Code32	Enable Code 32
<input type="checkbox"/> Start / Stop Digit		Whether transmit Start & Stop Digit.
Checksum	<input type="checkbox"/> Verify	Whether verify checksum by barcode.
	<input checked="" type="checkbox"/> Transmit	Whether transmit checksum by barcode.

### 3.2.2.13 Code93

The barcode do not have setting.

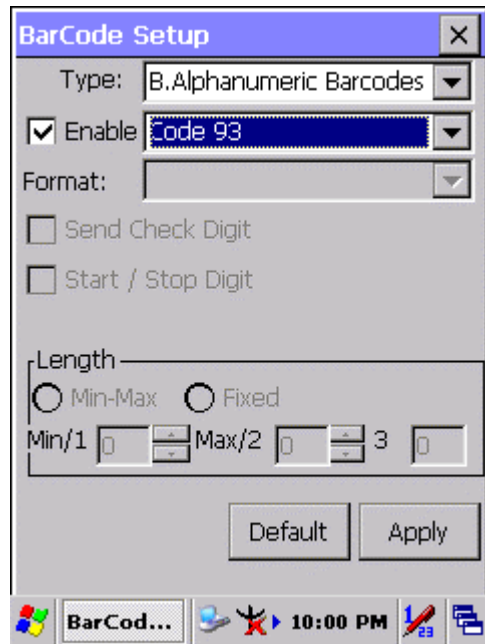


Figure 3-18 Code93

### 3.2.2.14 Code128 / UCC EAN128

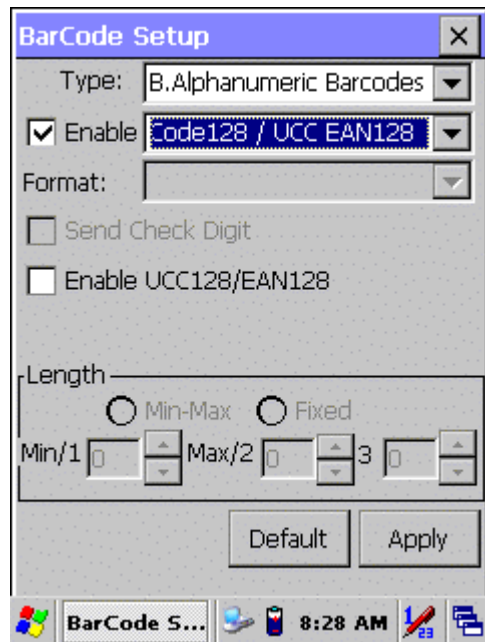


Figure 3-19 Code 128 / UCC EAN128

Table 3-17 Code128 / UCC EAN128 Explaining

Item	Explaining
<input type="checkbox"/> Enable UCC128/EAN128	Enable UCC128/EAN128.

## C Type -- Others Barcodes

### 3.2.2.15 China Post

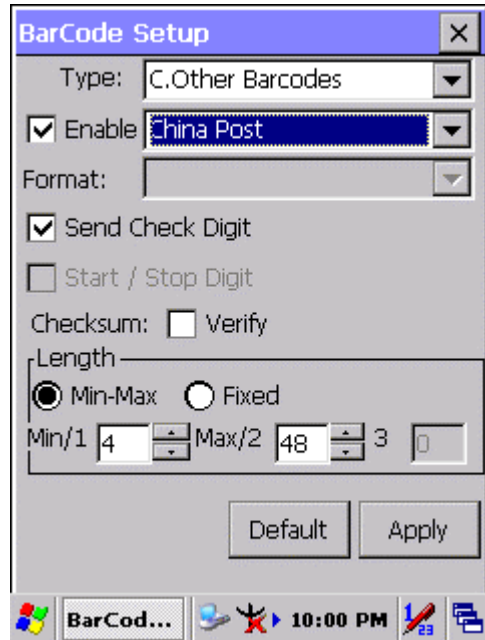


Figure 3-20 China Post

Table 3-18 China Post Explaining

Item		Explaining
Checksum	<input type="checkbox"/> Verify	Whether verify checksum by barcode.
	<input checked="" type="checkbox"/> Send Check Digit	Whether send check digit by barcode.
Length	<input checked="" type="radio"/> Min-Max (Default: 4 / 48)	Min Length can be set from 4 to 48
		Max Length can be set from 4 to 48
	<input type="radio"/> Fixed	Length 1 can be set from 4 to 48
		Length 2 can be set from 4 to 48
		Length 3 can be set from 4 to 48