

Figure 3-37 **Brightness**

3.2.5.3 Backup Restore

Table 3-25 **Backup Restore**

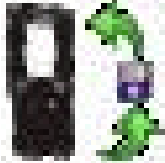
ICON	ITEM & FUNCTION
	<ol style="list-style-type: none"> 1. You can backup/restore system to/from flash disk or inserted memory card. (A. Disk on Chip, B. CF Card, C. SD Card) (Figure 3-38) 2. When you launch this AP, it must check backup file in DOC first. And if you select other storage, it will check again. 3. Then if it has the file, appeared its date behind “Last backup date:”; if not, disable “Restore Now” Button. 4. When you press the Backup/Restore Button will be a warning dialog pop up. (Figure 3-39) 5. When system backup/restoring finished will be a message dialog will pop up. (A. Backup: Figure 3-40, B. Restore: Figure 3-41)



Figure 3-38 Backup Restore

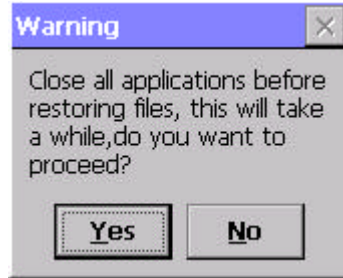
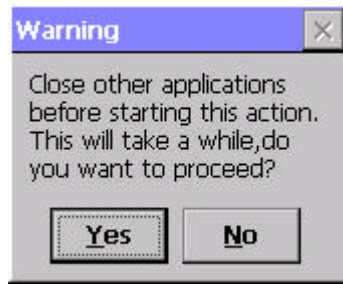


Figure 3-39 Backup & Restore Start

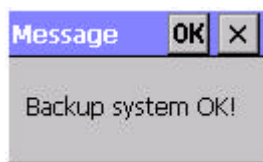



Figure 3-40 Backup OK



Figure 3-41 Restore OK

3.2.5.4 Fn-key Settings

Table 3-26 Fn-Key

ICON	ITEM & FUNCTION		
	<ul style="list-style-type: none"> Fn-Key Setting (Figure 3-42) 		
	Fn Key	The Application Program of default setting	
	F1	Internet Explorer	
	F2	Microsoft WordPad	
	F3	Inbox	
	F4	My Computer	
	F5	Barcode Settings	Only for SC620
	F6	Media Player	
F7	Calculator		

F8	Information
✓	To assign your favorite application program to Hot Keys.
✓	Choose one of Hot Keys from pull-down list.(Figure 3-43)
✓	To tap “Browse...” inside “ Assign program ” applet.
✓	Select one application program you want from program list, then, choose “ OK ”. (Figure 3-43)
✓	To tap “Default” to return back to default setting. (Figure 3-42)

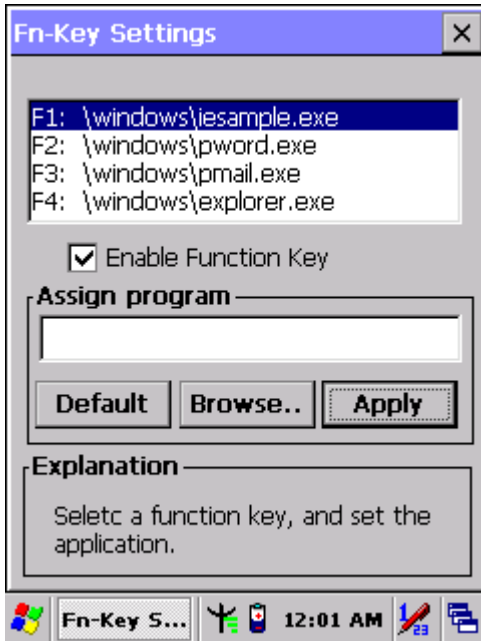



Figure 3-42 Fn-Key Settings



Figure 3-43 Fn-Key Settings

3.2.6 Date/Time

Table 3-27 Date/Time

ICON	ITEM & FUNCTION
 Date/Time	<ul style="list-style-type: none"> • “Date/Time” Tab :(Figure 2-14)
	<ul style="list-style-type: none"> ✓ Please see the detail information of 2.5.1 Setting Time and Date on P.2-21

3.2.7 Dialing Properties

Table 3-28 Dialing properties


ICON	ITEM & FUNCTION
 <p>Dialing</p>	<ul style="list-style-type: none"> ● “Dialing Properties” Tab :(Figure 3-44) ✓ In the When dialing from list, select the “Location” where you want to change settings.(Figure 3-45) ✓ To create a new location, select “New”. Enter the name of the location, and then select “OK”.(Figure 3-46) ✓ Enter or edit the area code and local country code as needed. ✓ In Dial using, select “Tone dialing” or “Pulse dialing”. Most phone lines are tone. ✓ To automatically disable call waiting, select “ Disable call waiting by dialing”, select the appropriate number sequence in the list, or enter a new sequence. <ul style="list-style-type: none"> ● Editing dialing patterns (Figure 3-47) ✓ Using the codes listed in the topic; revise the dialing patterns as needed. <p>Notes:</p> <ul style="list-style-type: none"> ■ If you need to use character other than the ones listed here, use manual dialing. ■ Hyphens and spaces in dialing strings are ignored. ■ Some modems may not respond to the following characters, even though your device lets you add them to the dial string.



Figure 3-44 Dialing Properties



Figure 3-45 Dialing Properties



Figure 3-46 Dialing Properties

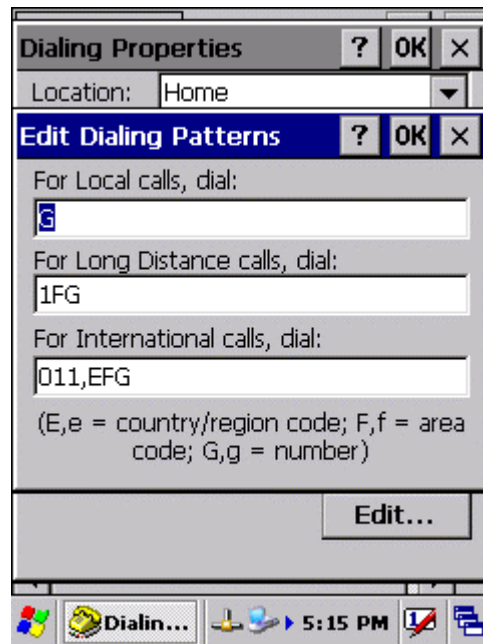



Figure 3-47 Dialing Properties

3.2.8 Display Properties

Table 3-29 Display properties

ICON	ITEM & FUNCTION
 Display	<ul style="list-style-type: none"> ● “Background” Tab :(Figure 3-48) ✓ From the “Image” list, select an image you want as the background of the desktop.(Figure 3-49) ✓ To locate an image in another folder, select “Browse”.(Figure 3-50) ✓ To have the image cover the entire background, select “ Tile image on background”
	<ul style="list-style-type: none"> ● “Appearance” Tab(Figure 3-51) ✓ Change the color scheme :(Figure 3-52) <ul style="list-style-type: none"> ➢ From the “Scheme” list, select a scheme. ➢ View your choice in the preview box. If you like the scheme, select “Apply”. ✓ Create a custom color scheme: <ul style="list-style-type: none"> ➢ From the “Item” list, select a display item. ➢ From the “Basic colors” list, select a color, and select “OK”. ➢ View your color selection(s) in the Preview box. ➢ To save the scheme, select “Save”. ➢ In the “Save this color scheme as” box, enter a name for the scheme, and select “OK”. ➢ Select “Apply”.

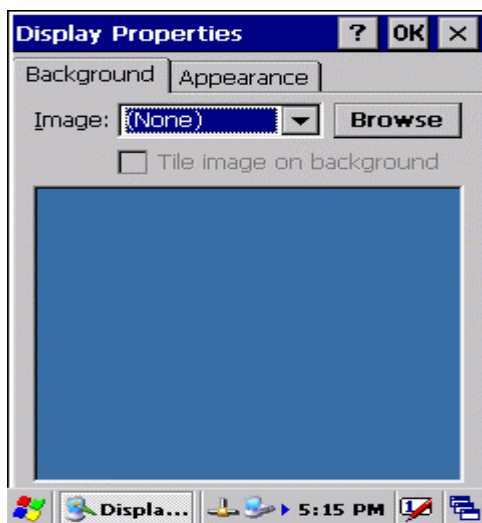


Figure 3-48 Display properties



Figure 3-49 Display properties

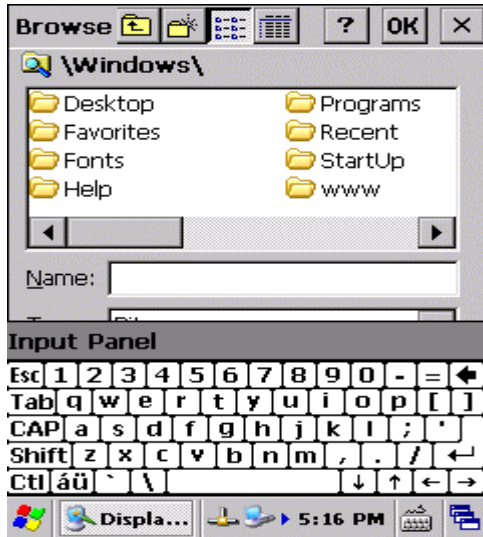


Figure 3-50 Display properties

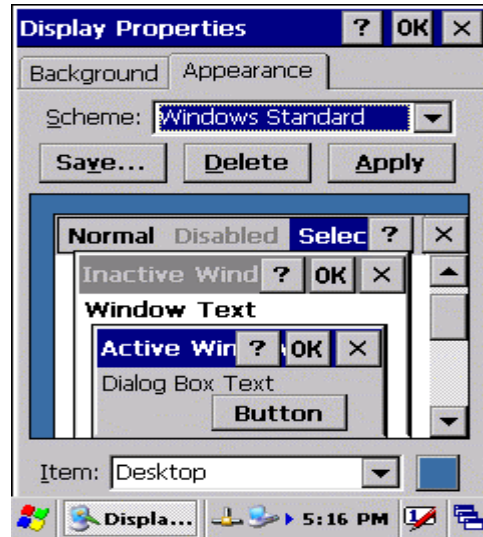


Figure 3-51 Display properties

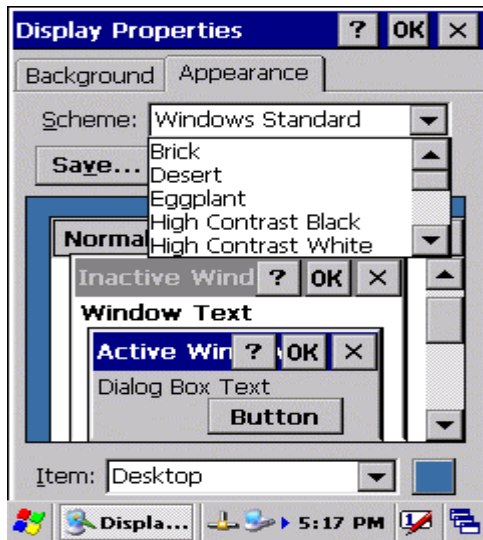



Figure 3-52 Display properties

3.2.9 Input Panel

Table 3-30 Display properties

ICON	ITEM & FUNCTION
 Input Panel	<ul style="list-style-type: none"> • “Input panel” Tab :(Figure 3-53) ✓ Select the input method you want to change. ✓ To change the Soft Keyboard Options , tap “Option” (Figure 3-54) .

	<ul style="list-style-type: none"> ● “Options” Tab : ✓ Change the soft keyboard options as desired, selecting from: <ul style="list-style-type: none"> ➢ Large or small keys ➢ Using gestures for space, black-space shift, and enter. ✓ To exit the soft keyboard Options, press “OK” on the control bar, or press the <Enter> key on the keypad. ✓ To exit the Input Panel, press “OK” on the control bar, or press the <Enter> key on the keypad.
--	--

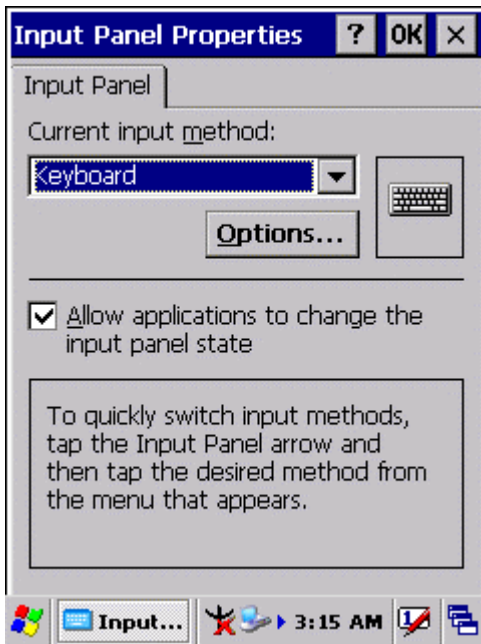


Figure 3-53 Input Panel Properties

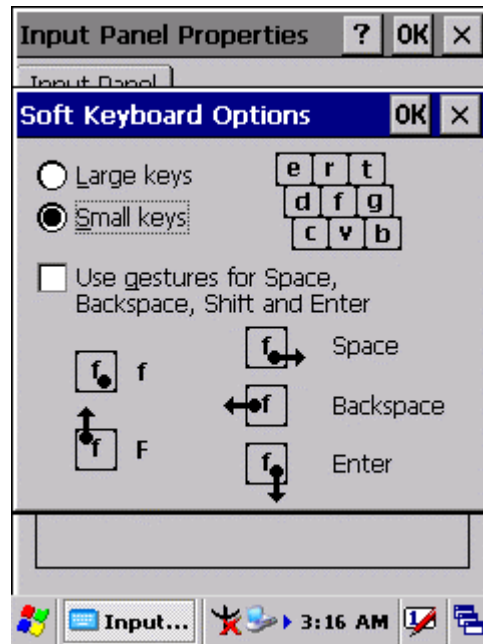



Figure 3-54 Input Panel Properties

3.2.10 Internet Options

Table 3-31 Internet Options

ICON	ITEM & FUNCTION
 Internet Options	<ul style="list-style-type: none"> ● “General” Tab :(Figure 3-55)
	<ul style="list-style-type: none"> ✓ Type in the URL of desired start page and the desired search engine. You also change the Cache Size, clear the Cache and Clear the History..
	<ul style="list-style-type: none"> ● “Connection” Tab :(Figure 3-56)
	<ul style="list-style-type: none"> ✓ Modify the network access setting as desired.

<ul style="list-style-type: none"> ● “Security” Tab (Figure 3-57)
<ul style="list-style-type: none"> ✓ Modify the security settings as desired. You can enable any of the following by tapping the checkbox: <ul style="list-style-type: none"> ➤ Allow cookies ➤ Allow TLS 1.0 security ➤ Allow SSL 2.0 security ➤ Allow SSL 3.0 security ➤ Warm when switching across secure and insecure areas.
<ul style="list-style-type: none"> ● “Advanced” Tab (Figure 3-58)
<ul style="list-style-type: none"> ✓ Modify the security settings as desired. You can enable any of the following by tapping the checkbox: <ul style="list-style-type: none"> ➤ Display Image in pages ➤ Play sounds in pages ➤ Enable scripting ➤ Display a notification about every script error ➤ Underline links- <ul style="list-style-type: none"> Never Always Hover



Figure 3-55 Internet Settings

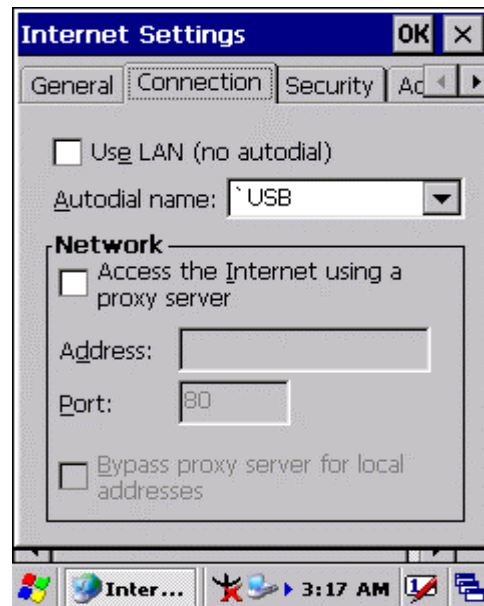


Figure 3-56 Internet Settings

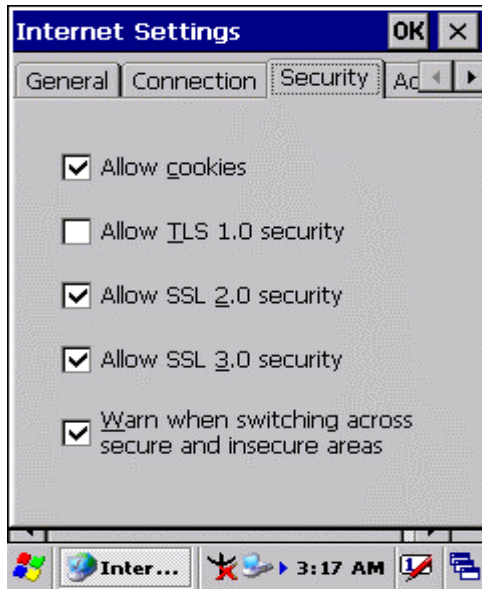


Figure 3-57 Internet Settings

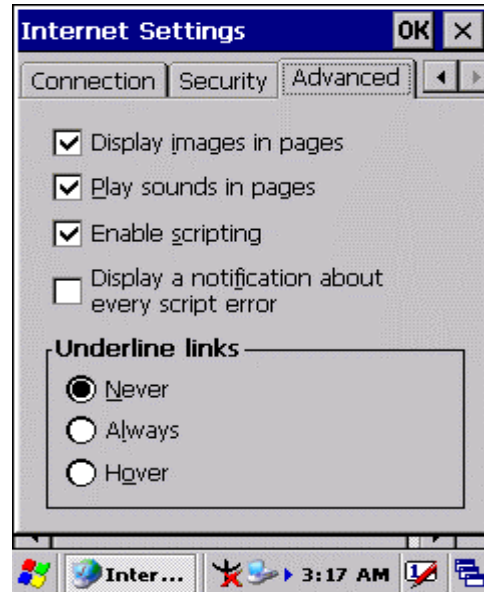



Figure 3-58 Internet Settings

3.2.11 Keyboard

Table 3-32 Keyboard

ICON	ITEM & FUNCTION
 Keyboard	<ul style="list-style-type: none"> <li data-bbox="427 1182 1331 1227">● “Repeat” Tab : (Figure 3-59) <li data-bbox="427 1234 1331 1317">✓ To change the amount of time between depressions before repetition starts, adjust the Repeat delay slider <li data-bbox="427 1323 1331 1361">✓ To change the repeat rate, adjust the Repeat rate slider. <li data-bbox="427 1368 1331 1406">✓ Test your new setting. <li data-bbox="427 1413 1331 1451">✓ Tap “ OK” to exit the “Keyboard” Tab.

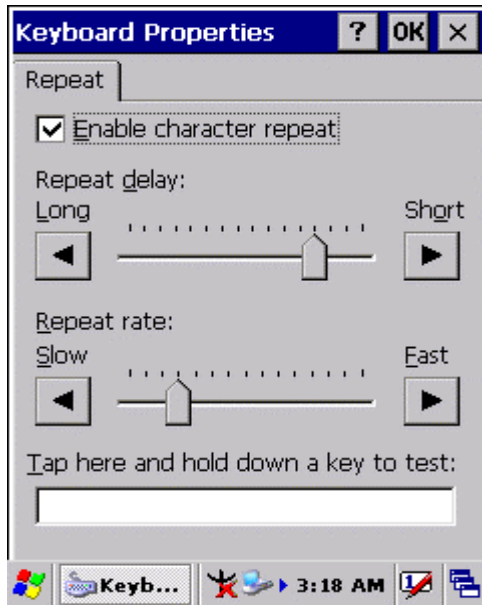



Figure 3-59 Keyboard Properties

3.2.12 Network and Dial-up Connections

Table 3-33 Network and Dial-up Connections

ICON	ITEM & FUNCTION
 Network and Dial-up Co...	<ul style="list-style-type: none"> ● “Connection” Tab : ✓ To create a “Dial-up Connection”: <ul style="list-style-type: none"> ➤ Double-tap the “Make New connection”. ➤ In the “Make New Connection” dialog box, enter a name for the connection. ➤ Select “Dial-Up Connection”. ➤ Select the “Next” button. ➤ Select the modem you want use. ➤ Select “Configure” ➤ Under “Connection Reference”, use the default settings provided. If you can’t connect using these settings, see your ISP or network administrator for specific information. If you want to always enter a phone number before connecting, Select “Manual Dial”. Select “OK”.

- Select **“TCP/IP Settings”**. In the **“General”** tab, ensure **“Use Server-assigned IP address”** is selected. In the **“Name Servers”** tab, ensure **“Use Server-assigned addresses”** is selected, and select **“OK”**. If you are unable to connect with these default settings, see your ISP or network administrator for specific TCP/IP information.
- Select the **“Next”** button and type the telephone number.
- Select the **“Finish”** button.

The connection you just created appears as an icon in the **“Network and Dial-up Connections”** folder.

- ✓ Set up a **point-to-Point Protocol (PPP)** account with an ISP and obtain the following information:
 - Access telephone number
 - User name
 - Password

Once you have established an account, create a new connection on your device. When creating this connection, you should be able to use all of the default TCP/IP settings provided in the Make New Connection Wizard. If you can't connect using the default settings, contact your ISP or access your ISP's Web site for specific TCP/IP information as well as primary and secondary DNS address.

- ✓ **Modify connection setting**
 - Select **Start > Settings > Network and Dialup Connections**
 - Select the icon for connection settings you want to modify.
 - Select **File > Properties**, or double- tap the appropriate icon.
 - Select desired options. There may be additional settings that depend on the connection. To modify, select the icon and select the icon and select **Advanced Settings...** from the menu.