



Figure 3-60 Network and Dial-up Connections

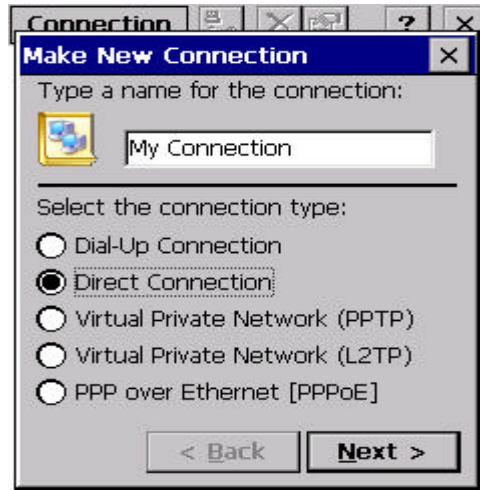


Figure 3-61 Network and Dial-up Connections



Figure 3-62 Network and Dial-up Connections



Figure 3-63 Network and Dial-up Connections



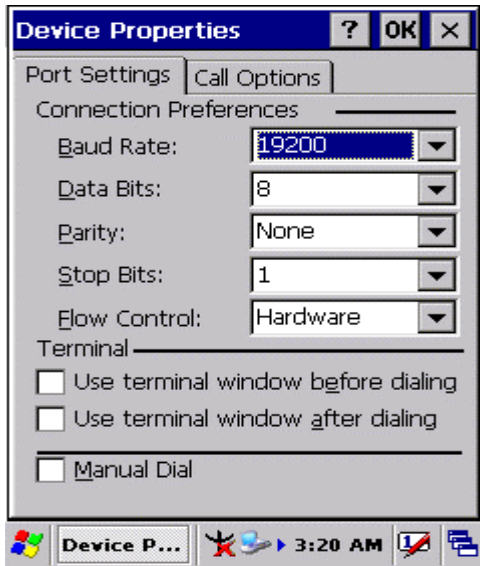


Figure 3-64 Network and Dial-up Connections

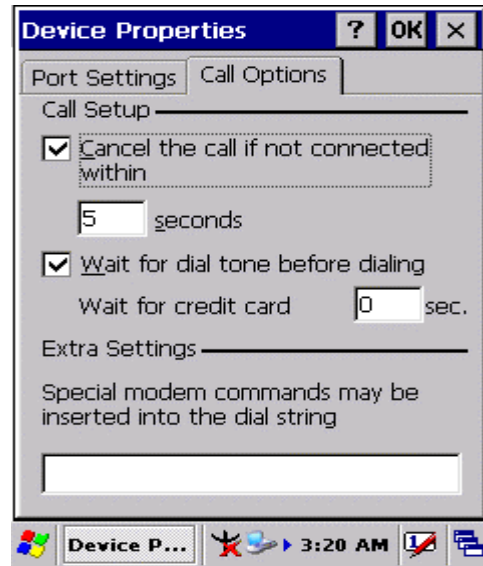


Figure 3-65 Network and Dial-up Connections

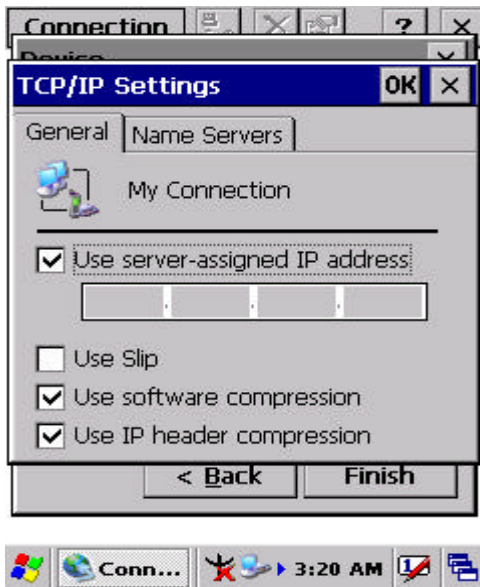


Figure 3-66 Network and Dial-up Connections

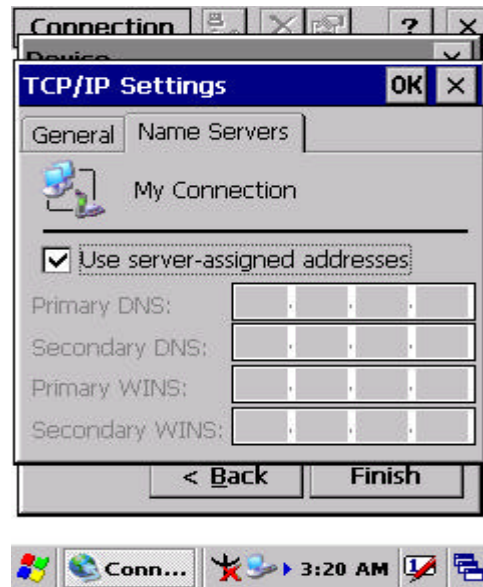


Figure 3-67 Network and Dial-up Connections

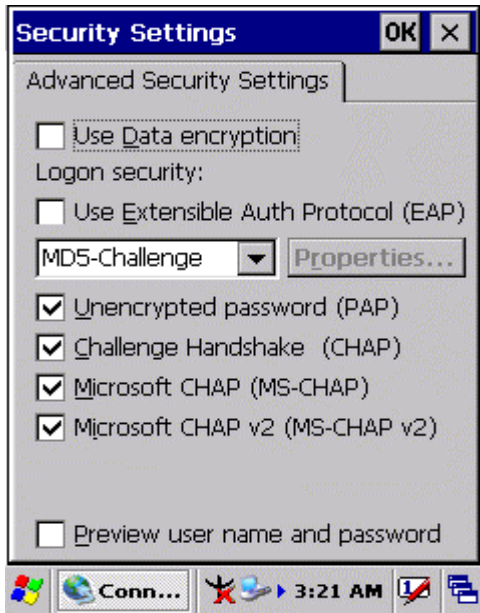


Figure 3-68 Network and Dial-up Connections

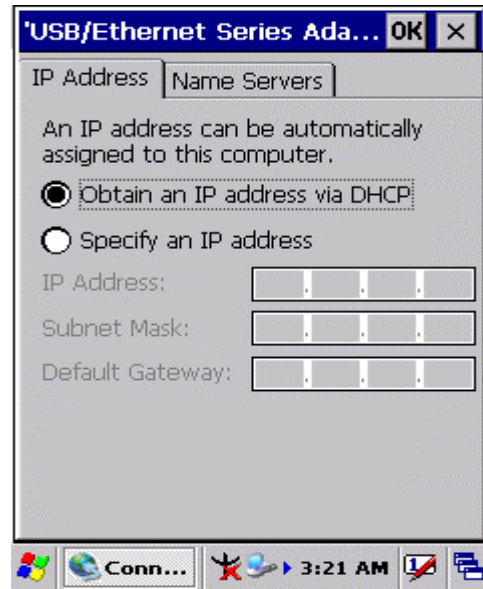


Figure 3-69 Network and Dial-up Connections

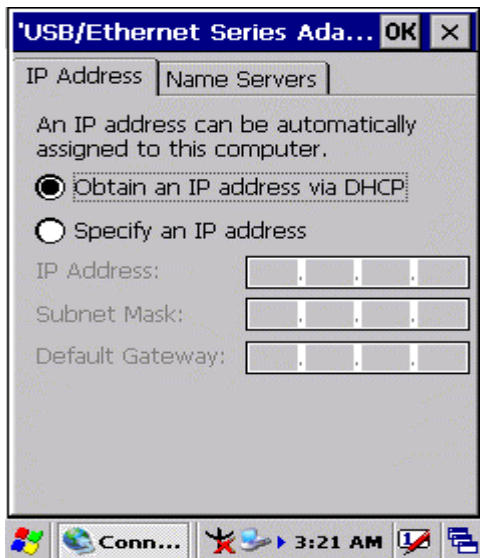


Figure 3-70 Network and Dial-up Connections

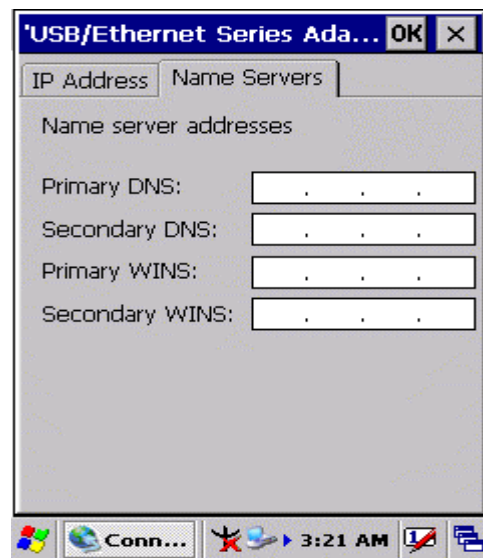



Figure 3-71 Network and Dial-up Connections

### 3.2.13 Owner

Table 3-35 Owner

ICON	ITEM & FUNCTION
	<ul style="list-style-type: none"> <li>• “Identification” Tab : (Figure 3-74)</li> </ul>

 Owner	<ul style="list-style-type: none"> <li>• “<b>Identification</b>” Tab : (Figure 3-74)</li> </ul>
	<ul style="list-style-type: none"> <li>• “<b>Network ID</b>” Tab: (Figure 3-75)</li> </ul>
	<ul style="list-style-type: none"> <li>✓ Enter this information, password, and when you start your device, select “<b>Display Owner Identification</b>” at Power On.</li> </ul>
	<ul style="list-style-type: none"> <li>✓ To set up identification for remote networks, see Setting up identification for remote</li> </ul>

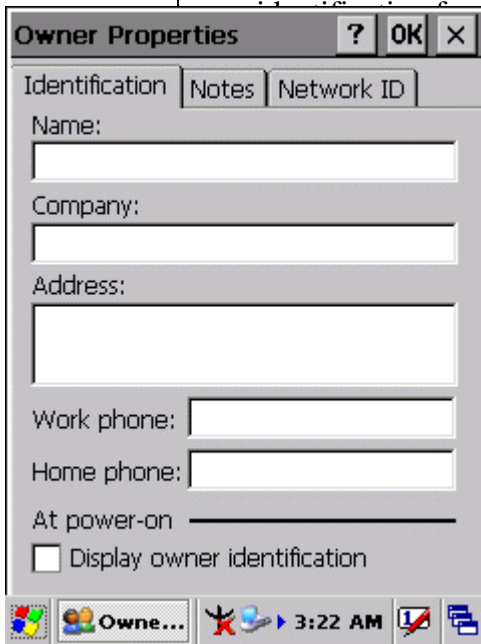


Figure 3-72 Owner Properties

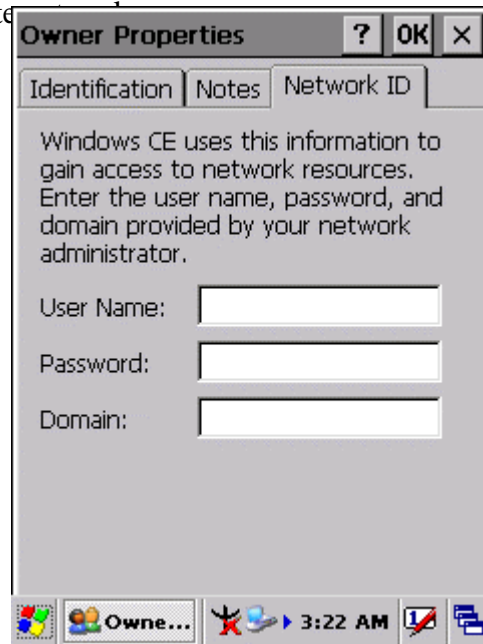


Figure 3-73 Owner Properties

### 3.2.14 Password

Table 3-36 Password


ICON	ITEM & FUNCTION
	<ul style="list-style-type: none"> <li>• “<b>Password Setting</b>” Tab : (Figure 3-76)</li> <li>✓ Enter the password</li> <li>✓ In the “<b>Confirm password</b>” box, enter the password again.</li> <li>✓ To require the password on startup, select “<b>Enable password protection at power- on</b>“ and/or select “<b>Enable password protection for screen saver</b>”</li> <li>✓ To exit the <b>Password</b> control panel, press “<b>OK</b>” from the control bar, or press the &lt;Enter&gt; key on the keypad.</li> </ul>



Figure 3-74 Password Properties

### 3.2.15 PC Connection

Table 3-37 PC Connection

ICON	ITEM & FUNCTION
 PC Connection	<ul style="list-style-type: none"> <li data-bbox="427 1279 1331 1317">● “PC Connection” Tab : (Figure 3-77)</li> <li data-bbox="427 1328 1331 1413">✓ Select the first checkbox to enable direct connections to the desktop computer. (Figure 3-77)</li> <li data-bbox="427 1424 1331 1509">✓ Tap the “Change Connection...” button to modify the connection method from <b>USB</b> or <b>Serial</b>. (Figure 3-78)</li> <li data-bbox="427 1520 1331 1606">✓ To exit the “Change Connection” dialog, press “OK” from the control bar, or press the &lt;Enter&gt; key on the keypad.</li> <li data-bbox="427 1617 1331 1744">✓ To exit the “PC Connection” properties control panel, press “OK” from the control bar, or press the &lt;Enter&gt; key on the keypad.</li> </ul>

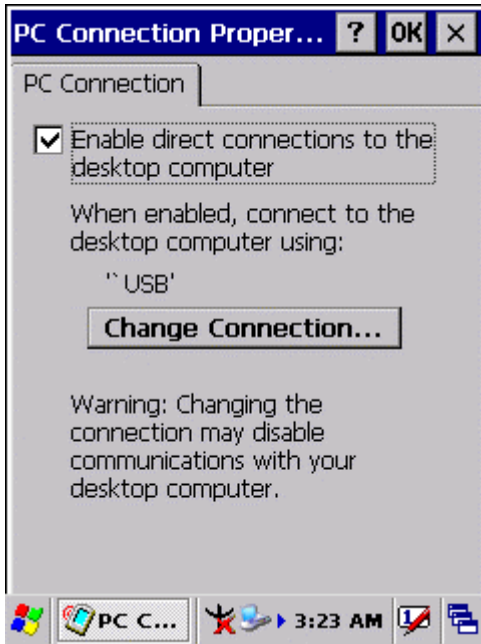


Figure 3-75 PC Connection

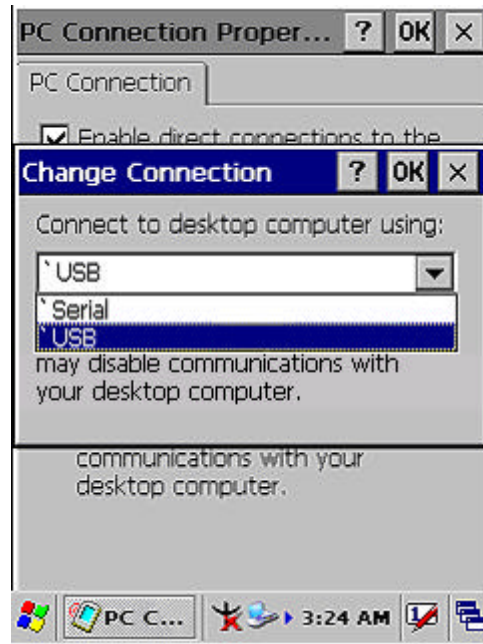






Figure 3-76 PC Connection

### 3.2.16 Power

Table 3-38 Power

ICON	ITEM & FUNCTION
 Power	<ul style="list-style-type: none"> <li>● <b>“Battery” Tab : (Figure 3-79)</b> <ul style="list-style-type: none"> <li>✓ Provide change level indicators for <b>Main battery</b> and <b>Backup battery</b>.</li> <li>✓ Provide remaining power capacity of main battery.</li> <li>✓ If a “Main Batteries very Low” warning message shows, the remaining battery life is around 30 minutes to SC600 shuts down. ( <b>Figure 3-83</b>)</li> <li>✓ The PDT will shutdown during the main batteries capacity is around <b>0%</b></li> <li>✓ To exit Battery control panel, press “<b>OK</b>” from the command bar, or press &lt;<b>Enter</b>&gt; key on keypad.</li> </ul> </li> <li>● <b>“ Schemes” Tab: (Figure 3-80)</b></li> </ul>

	<ul style="list-style-type: none"> <li>✓ The <b>Scheme</b> Tab allows you to determine the time to switch state to Suspend mode when using either <b>Battery Power</b> or <b>AC Power</b>.</li> <li>✓ Select <b>Battery Power</b> or <b>AC Power</b> as the power scheme from the pull-down list.( <b>Figure 3-80</b>)</li> <li>✓ Select the time to suspend mode from the pull-down list. ( <b>Figure 3-81</b>)</li> </ul>
	<ul style="list-style-type: none"> <li>● <b>“Device Status” Tab: ( Figure 3-82)</b></li> </ul>
	<p>Provide power level of device – The power level ranges from “ <b>High(D0)</b>” which means the device is at the highest power level to “<b>Off(D4)</b>” which means the device is at the lowest power level.</p>
<p><b>Note:</b></p>	
	<p>This ICON inside the Task Bar shows that AC adapter provides power to the PDT</p>
	<p>The ICON inside the Task Bar shows that Main Batteries provides the power to the PDT.</p>
	<p>The ICON inside the Task Bar shows that AC adapter provides the power to the PDT and is charging the main batteries..</p>

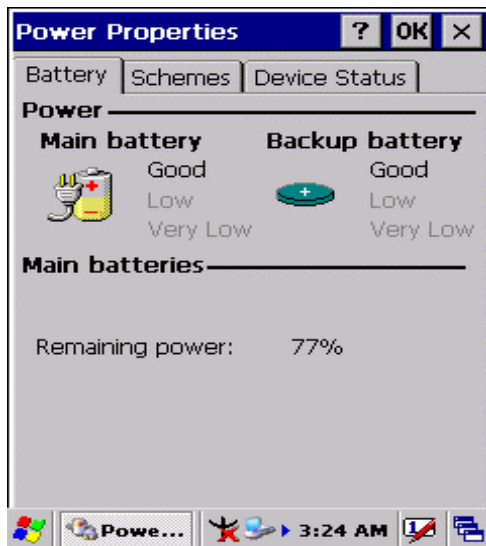


Figure 3-77 Power

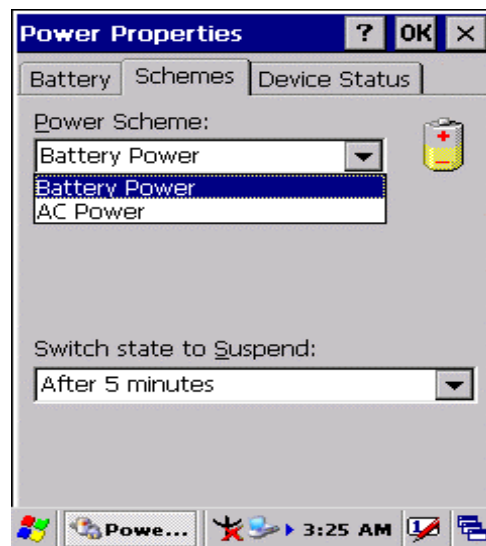


Figure 3-78 Power



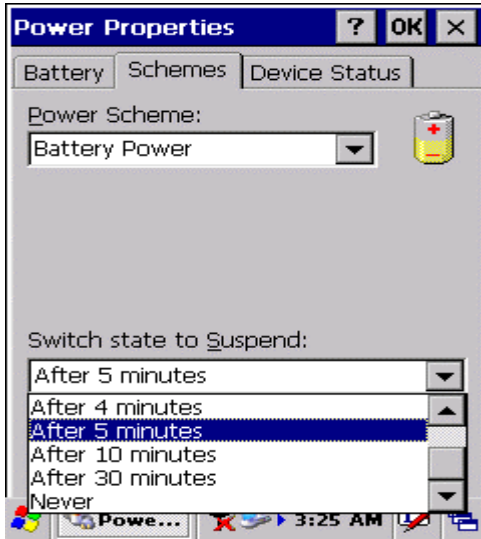


Figure 3-79 Power

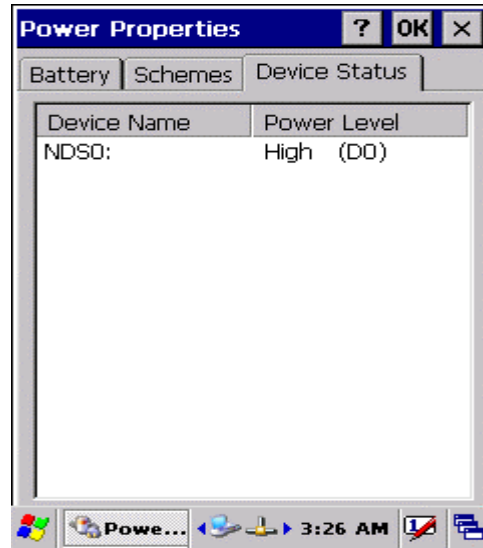


Figure 3-80 Power

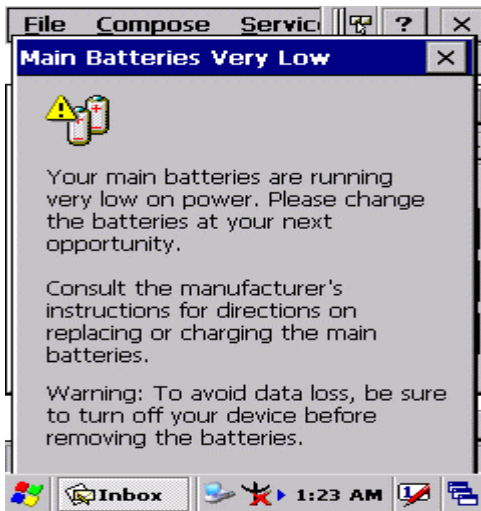



Figure 3-81 Power

### 3.2.17 Regional Settings

Table 3-39 Regional Settings

ICON	ITEM & FUNCTION
 Regional Settings	<ul style="list-style-type: none"> <li>● “Region” Tab : (Figure 3-84)</li> <li>✓ Select the desired location/language.</li> <li>✓ Review the <b>Appearance samples</b> in the bottom half of the screen.</li> <li>✓ Select the Tab at the top for any settings you wish to change, Options to modify include <b>Number, Currency, Time, and Date.</b></li> </ul>



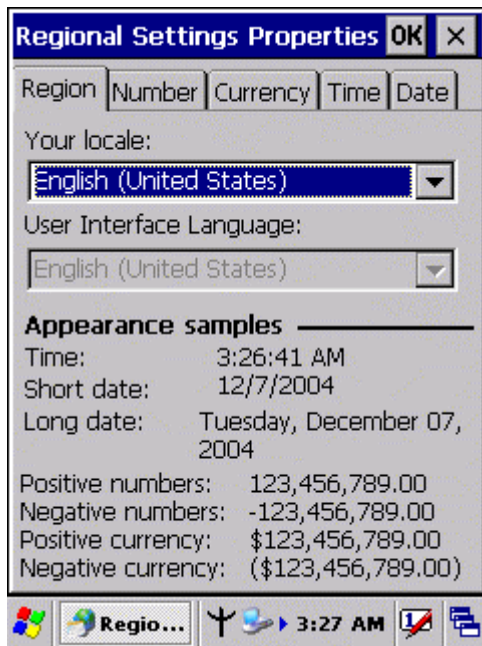



Figure 3-82 Regional Settings

### 3.2.18 Remove Programs

Table 3-40 Remove Programs

ICON	ITEM & FUNCTION
 Remove Programs	<ul style="list-style-type: none"> <li>● <b>“Remove Programs” Tab :</b></li> <li>✓ Only user installed programs can be removed.</li> <li>➤ Select the program you wish to remove from the list and press <b>“remove”</b> button.</li> </ul>