

C Type -- Others Barcodes

3.2.2.15 China Post

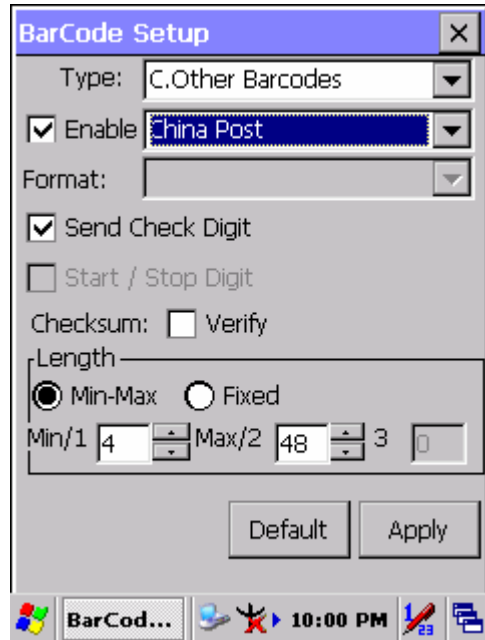


Figure 3-20 China Post

Table 3-18 China Post Explaining

Item		Explaining
Checksum	<input type="checkbox"/> Verify	Whether verify checksum by barcode.
	<input checked="" type="checkbox"/> Send Check Digit	Whether send check digit by barcode.
Length	<input checked="" type="radio"/> Min-Max (Default: 4 / 48)	Min Length can be set from 4 to 48
		Max Length can be set from 4 to 48
	<input type="radio"/> Fixed	Length 1 can be set from 4 to 48
		Length 2 can be set from 4 to 48
		Length 3 can be set from 4 to 48

3.2.2.16 Code4

The barcode do not have setting.

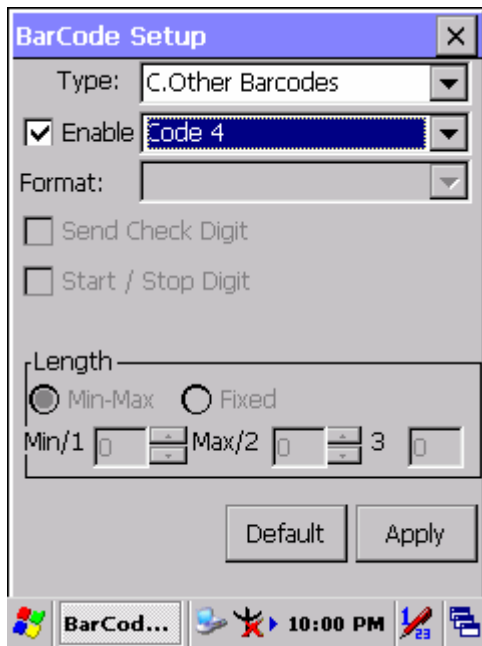


Figure 3-21 Code4

3.2.2.17 GTIN

The barcode do not have setting.

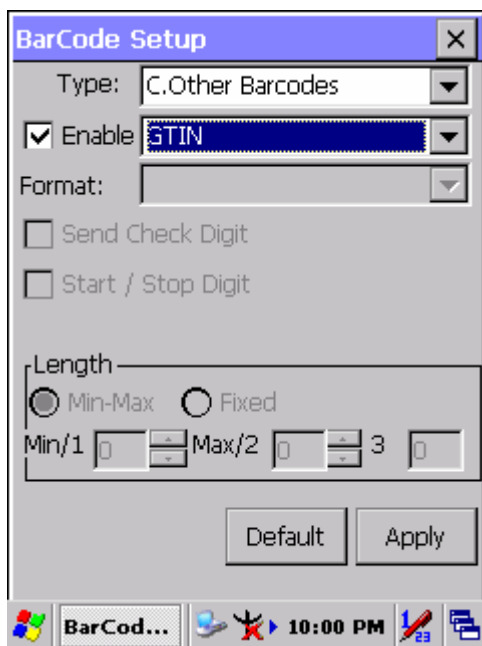


Figure 3-22 GTIN

3.2.2.18 Korea Code 3 of 5

The barcode do not have setting.

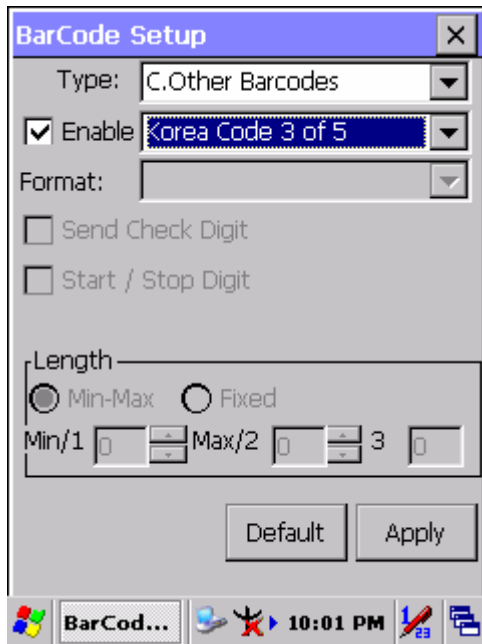


Figure 3-23 Korea Code 3 of 5

3.2.2.19 RSS

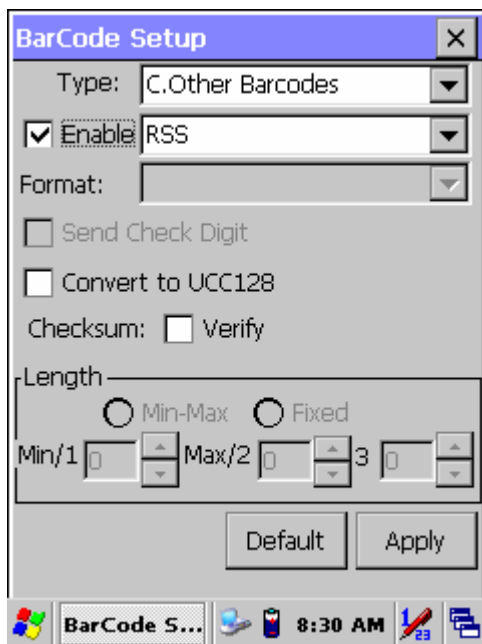




Figure 3-24 RSS

Table 3-19 RSS Explaining

Item	Explaining
<input type="checkbox"/> Convert to UCC128	The scanner will convert RSS to UCC128.
Checksum <input type="checkbox"/> Verify	Whether verify checksum by barcode.

3.2.3 Bluetooth Device Properties

Table 3-20 Bluetooth Device Properties

ICON	ITEM & FUNCTION
	<ul style="list-style-type: none"> ● “BT Service” Tab (Figure 3-25) : ✓ Tap the “Enable Bluetooth Device” to enable Bluetooth device. ✓ Wait for 20 seconds in order to initialize the Bluetooth hardware correctly. ✓ Click “Scan Device Service” to pop “Bluetooth Manager” window. Then tap the Scan Device button to initiate a scan for Bluetooth hardware. The Bluetooth manager lists the Bluetooth devices that it finds, see Figure 3-26. If Bluetooth hardware is not found the <i>Bluetooth Hardware Error</i> window appears, see Figure 3-27. Table 3-21 described the Bluetooth Icons. ✓ Double tap the device to connect to on the device list. The Bluetooth Manager Authentication window appears. Tap No to connect to the device without authentication, or tap Yes to authenticate the device before connecting. (Figure 3-28) ✓ If the Yes button was selected in the Bluetooth Manager Authentication window, the enter PIN windows appears. Enter a PIN (between 1 and 16 characters) in the <i>Enter PIN:</i> text box, and tap OK. The mobile computer sends the PIN request to the device for bonding. (Figure 3-29) ✓ When prompted, the same PIN must be entered on the other device. When the PIN is entered correctly on the other device, the bonded icon  appears on the device list. (Figure 3-30)
	<ul style="list-style-type: none"> ● “Serial Port” Tab (Figure 3-30-1) : ✓ Tap the “Enable Bluetooth Device” to enable Bluetooth device. ✓ Wait for 20 seconds in order to initialize the Bluetooth hardware correctly. ✓ If want to use Virtual com, only SPP base profiles are supported.(i.e. Printer, Modem, and LAP).Switch to “Serial Port” tab, and will see the devices you had trusted or active. Select the device that you want to map a virtual com and which virtual com you want to use. ✓ Now COM1 has mapped for BT device.

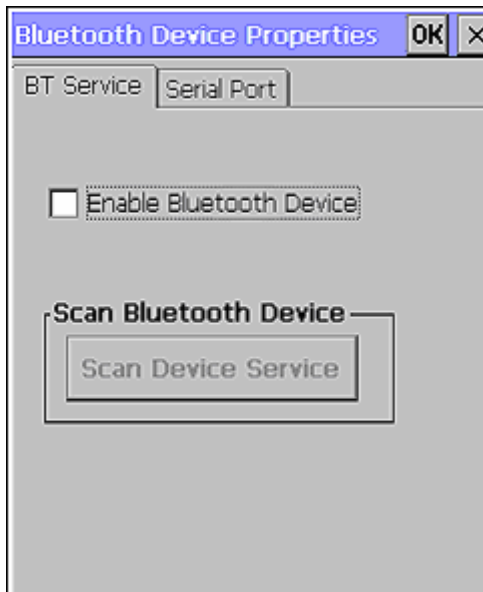


Figure 3-25 Bluetooth Device Properties

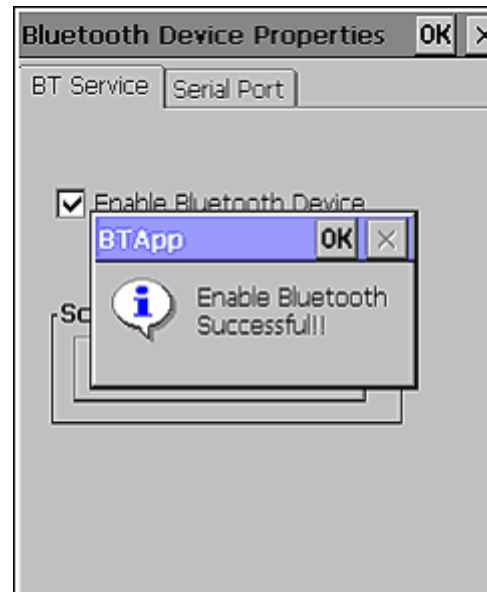


Figure 3-25-1 Bluetooth Device Properties



Figure 3-26 Bluetooth Manager Windows

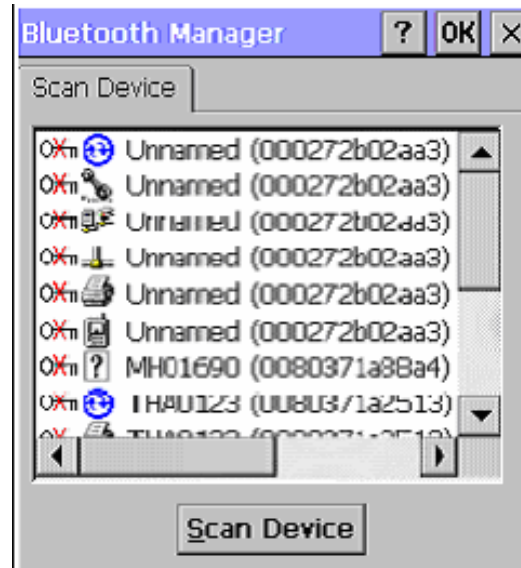


Figure 3-26-1 Bluetooth Manager Windows



Figure 3-27 Bluetooth Error Windows



Figure 3-28 Bluetooth Manager Windows



Figure 3-29 Bluetooth Enter PIN Windows

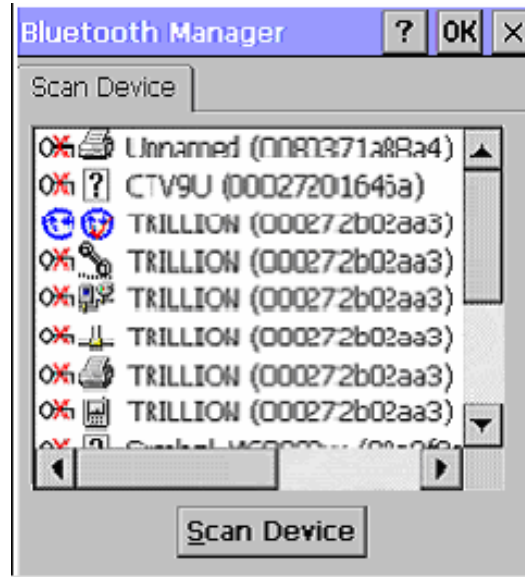


Figure 3-30 Bluetooth Manager Windows

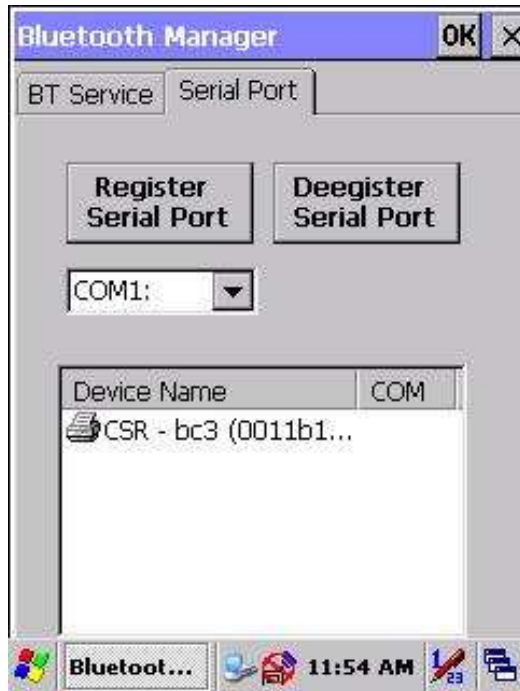


Figure 3-30-1 Bluetooth Manager Windows



Figure 3-30-2 Bluetooth Manager Windows



Figure 3-30-3 Bluetooth Manager Windows

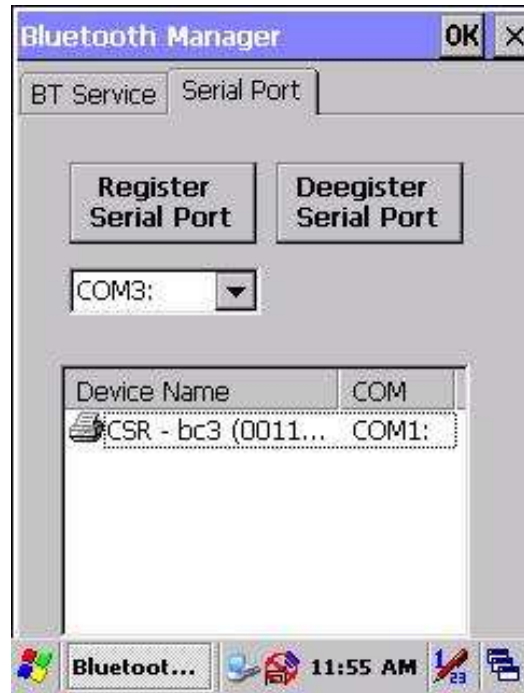



Figure 3-30-4 Bluetooth Manager Windows

Note: If the device to which the mobile computer is bonding does not appear in the list, ensure it is turned on, in discoverable mode, and within range (30 feet / 10 meters) of the mobile computer.

Table 3-21 Bluetooth Icon

Icon		Description
	Unknown device icon	Device is not defined
	Locked icon	Device is locked and cannot be bonded to.
	Not locked icon	Device is not locked and can be bonded to.
	Bluetooth device icon	Bluetooth device
	Bonded device icon	Bonded Bluetooth device
	Mobile device icon	Device is a mobile device
	Phone icon	Device is a phone.
	Printer icon	Device is a printer
	Network icon	Device is a network.

Icon		Description
	Linked icon	Device is linked.

3.2.4 Certificates

Certificates are used by some applications for establishing trust and for secure communications.

Certificates are signed and issued by certificate authorities and are valid for a prescribed period of time. Windows CE manages multiple certificate stores.

Table 3-22 Certificates


ICON	ITEM & FUNCTION
 Certificates	<ul style="list-style-type: none"> ● “Store” Tab (Figure 3-31) :
	<ul style="list-style-type: none"> ✓ In the Stores tab, select the certificate store you wish to view or modify from the drop-down list (Figure 3-32). ✓ The “Trusted Authorities” store lists the top-level certificates for authorities you trust. (Figure 3-33 , Figure 3-34) ✓ The “My Certificates” store contains your personal certificates, which you use to identify yourself. ✓ Intermediate certificate authorities that help establish a chain of trust are stored in the “Other Authorities” store.
	<ul style="list-style-type: none"> ● “Store” Tab :
	<ul style="list-style-type: none"> ✓ To add a certificate or associated private key to the selected store, select “Import” (Figure 3-35). ✓ To view more details of the selected certificate, such as the expanded name or expiration date, choose “View”. ✓ To delete the selected certificate from the store, choose “Remove”.



Figure 3-31 Certificates

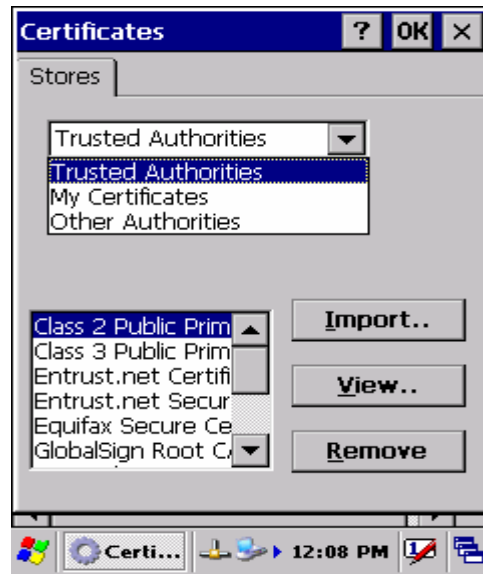


Figure 3-32 Certificates

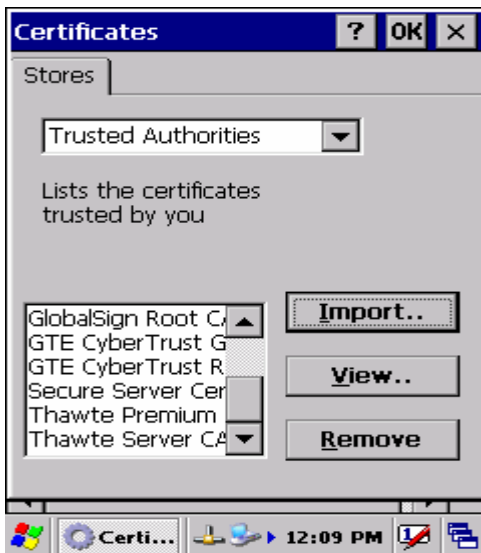


Figure 3-33 Certificates

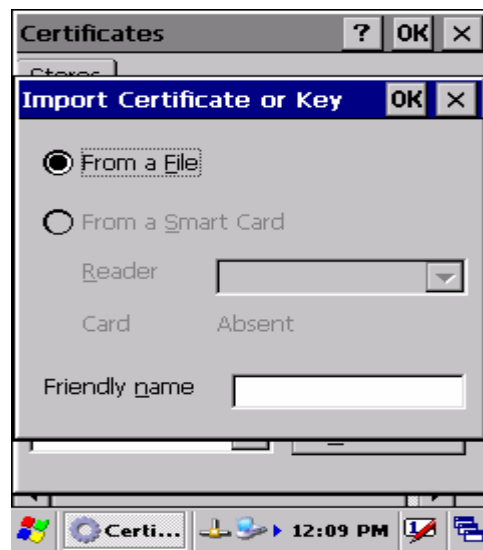


Figure 3-34 Certificates



Figure 3-35 Certificates

3.2.5 Control Center


The Control Center includes four AP, listed the following



Figure 3-36 Control Center

3.2.5.1 Information

Table 3-23 Information

ICON	ITEM & FUNCTION
	<ul style="list-style-type: none"> • “Information” Tab : ✓ Provide Software version, MAC address, Bluetooth ID, Serial No. and Configuration No.

3.2.5.2 Brightness

Table 3-24 Brightness




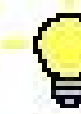




ICON	ITEM & FUNCTION	
	<p>LCD Brightness Tune the LCD brightness by tapping right-arrow & left-arrow. Can also tune the LCD brightness by pressing right-direction key or left-direction key of keypad.</p>	
	<p>Amounts 7 steps: Every step have corresponding picture of self.</p> <div style="display: flex; justify-content: space-around; align-items: center;"> <div style="text-align: center;">1. </div> <div style="text-align: center;">2. </div> <div style="text-align: center;">3. </div> <div style="text-align: center;">4. </div> </div> <div style="display: flex; justify-content: space-around; align-items: center; margin-top: 10px;"> <div style="text-align: center;">5. </div> <div style="text-align: center;">6. </div> <div style="text-align: center;">7. </div> </div>	
	<input type="checkbox"/> Enable Keypad Brightness	Open keypad brightness or not.
	<p>Backlight Timeout Save battery life by automatically turning off the backlight when not used.</p>	
	<input checked="" type="checkbox"/> Battery Power, turn off backlight after	<p>The table must disable when its item is not marked.</p> <p>The table has 15 seconds, 30 seconds, 1 minute, <u>2 minutes</u> and 5 minutes.</p>
	<input type="checkbox"/> AC Power, turn off backlight after	<p>The table must disable when its item is not marked.</p> <p>The table has 15 seconds, 30 seconds, 1 minute, <u>2 minutes</u> and 5 minutes.</p>
	<input checked="" type="checkbox"/> Dim backlight after 20 seconds of idleness.	Save battery life functionally of idleness mode, open it or not.



Figure 3-37 Brightness

3.2.5.3 Backup Restore

Table 3-25 Backup Restore

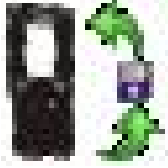
ICON	ITEM & FUNCTION
	<ol style="list-style-type: none"> 1. You can backup/restore system to/from flash disk or inserted memory card. (A. Disk on Chip, B. CF Card, C. SD Card) (Figure 3-38) 2. When you launch this AP, it must check backup file in DOC first. And if you select other storage, it will check again. 3. Then if it has the file, appeared its date behind “Last backup date:”; if not, disable “Restore Now” Button. 4. When you press the Backup/Restore Button will be a warning dialog pop up. (Figure 3-39) 5. When system backup/restoring finished will be a message dialog will pop up. (A. Backup: Figure 3-40, B. Restore: Figure 3-41)



Figure 3-38 Backup Restore

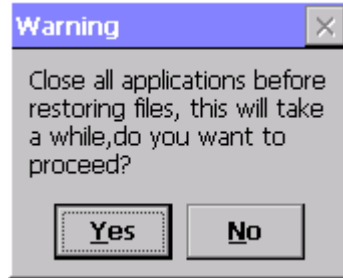
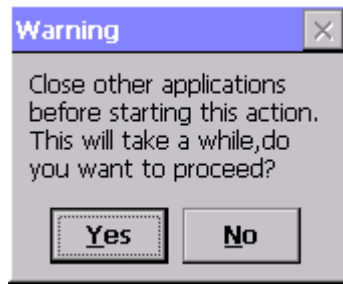


Figure 3-39 Backup & Restore Start

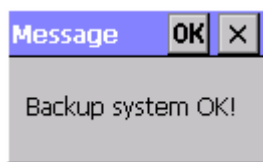


Figure 3-40 Backup OK

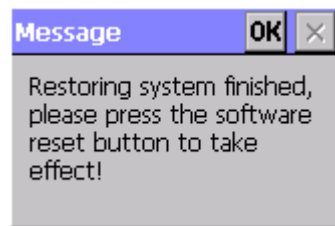



Figure 3-41 Restore OK

3.2.5.4 Fn-key Settings

Table 3-26 Fn-Key

ICON	ITEM & FUNCTION		
	<ul style="list-style-type: none"> Fn-Key Setting (Figure 3-42) 		
	Fn Key	The Application Program of default setting	
	F1	Internet Explorer	
	F2	Microsoft WordPad	
	F3	Inbox	
	F4	My Computer	
	F5	Barcode Settings	Only for SC720
	F6	Media Player	
F7	Calculator		

F8	Information
✓	To assign your favorite application program to Hot Keys.
✓	Choose one of Hot Keys from pull-down list.(Figure 3-43)
✓	To tap “Browse...” inside “ Assign program ” applet.
✓	Select one application program you want from program list, then, choose “ OK ”. (Figure 3-43)
✓	To tap “Default” to return back to default setting. (Figure 3-42)

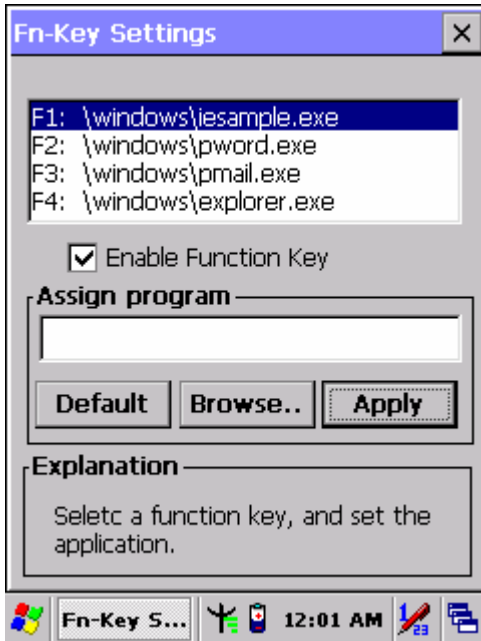



Figure 3-42 Fn-Key Settings



Figure 3-43 Fn-Key Settings

3.2.6 Date/Time

Table 3-27 Date/Time

ICON	ITEM & FUNCTION
 Date/Time	<ul style="list-style-type: none"> • “Date/Time” Tab :(Figure 2-14) ✓ Please see the detail information of 2.5.1 Setting Time and Date on P.2-21

3.2.7 Dialing Properties

Table 3-28 Dialing properties


ICON	ITEM & FUNCTION
 <p>Dialing</p>	<ul style="list-style-type: none"> ● “Dialing Properties” Tab :(Figure 3-44) ✓ In the When dialing from list, select the “Location” where you want to change settings.(Figure 3-45) ✓ To create a new location, select “New”. Enter the name of the location, and then select “OK”.(Figure 3-46) ✓ Enter or edit the area code and local country code as needed. ✓ In Dial using, select “Tone dialing” or “Pulse dialing”. Most phone lines are tone. ✓ To automatically disable call waiting, select “<input type="checkbox"/> Disable call waiting by dialing”, select the appropriate number sequence in the list, or enter a new sequence. <hr/> <ul style="list-style-type: none"> ● Editing dialing patterns (Figure 3-47) ✓ Using the codes listed in the topic; revise the dialing patterns as needed. <p>Notes:</p> <ul style="list-style-type: none"> ■ If you need to use character other than the ones listed here, use manual dialing. ■ Hyphens and spaces in dialing strings are ignored. ■ Some modems may not respond to the following characters, even though your device lets you add them to the dial string.



Figure 3-44 Dialing Properties



Figure 3-45 Dialing Properties

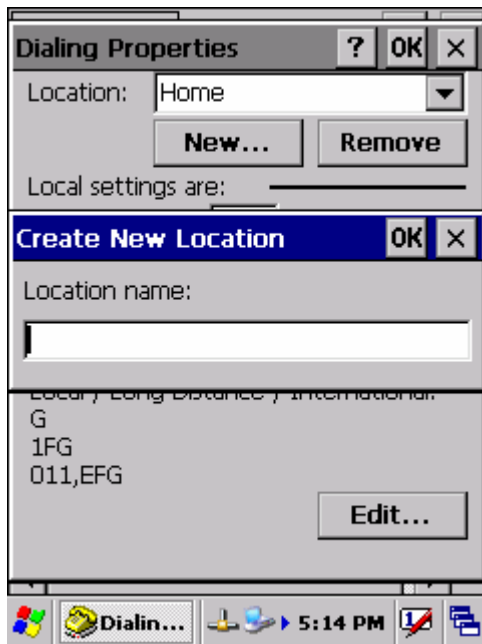


Figure 3-46 Dialing Properties

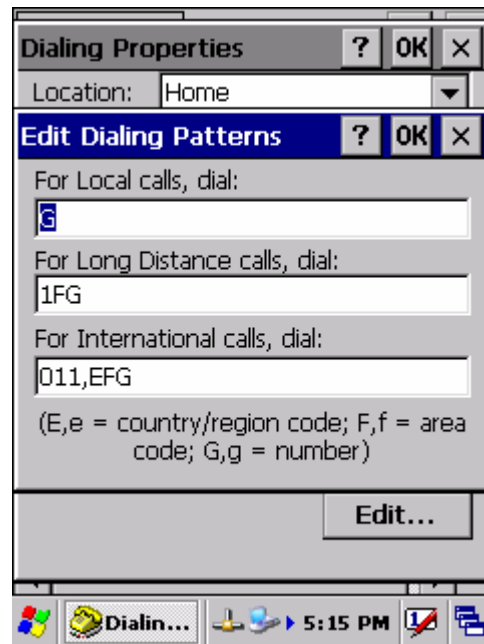



Figure 3-47 Dialing Properties

3.2.8 Display Properties

Table 3-29 Display properties

ICON	ITEM & FUNCTION
 Display	<ul style="list-style-type: none"> ● “Background” Tab :(Figure 3-48) ✓ From the “Image” list, select an image you want as the background of the desktop.(Figure 3-49) ✓ To locate an image in another folder, select “Browse”.(Figure 3-50) ✓ To have the image cover the entire background, select “ <input type="checkbox"/> Tile image on background”
	<ul style="list-style-type: none"> ● “Appearance” Tab(Figure 3-51) ✓ Change the color scheme :(Figure 3-52) <ul style="list-style-type: none"> ➤ From the” Scheme” list, select a scheme. ➤ View your choice in the preview box. If you like the scheme, select “Apply”. ✓ Create a custom color scheme: <ul style="list-style-type: none"> ➤ From the “Item” list, select a display item. ➤ From the “Basic colors” list, select a color, and select “OK”. ➤ View your color selection(s) in the Preview box. ➤ To save the scheme, select “Save”. ➤ In the “Save this color scheme as” box, enter a name for the scheme, and select “OK”. ➤ Select “Apply”.

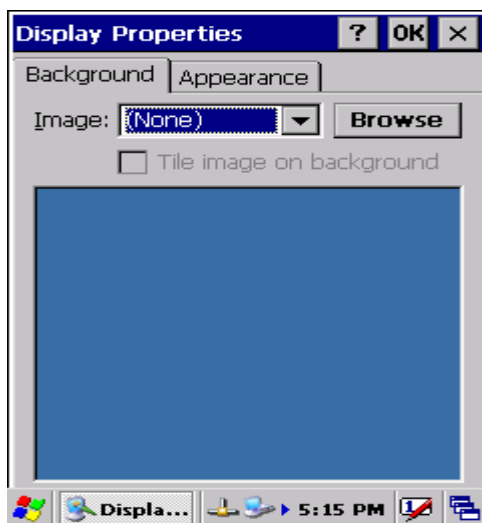


Figure 3-48 Display properties



Figure 3-49 Display properties

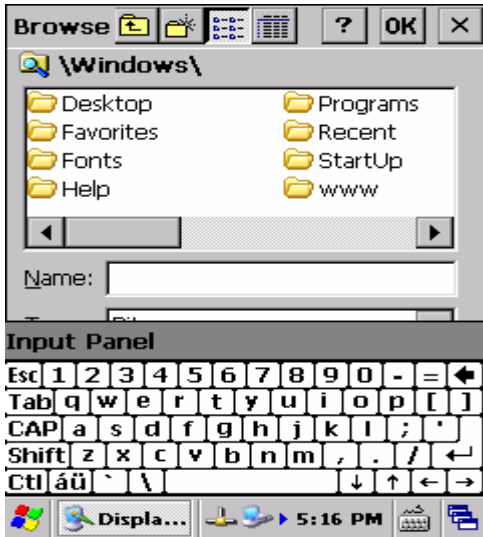


Figure 3-50 Display properties

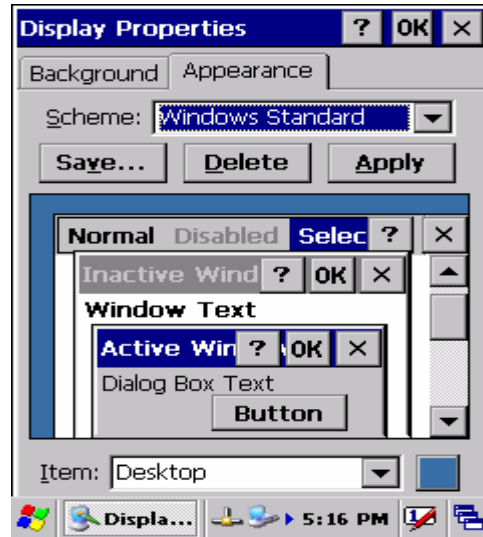


Figure 3-51 Display properties

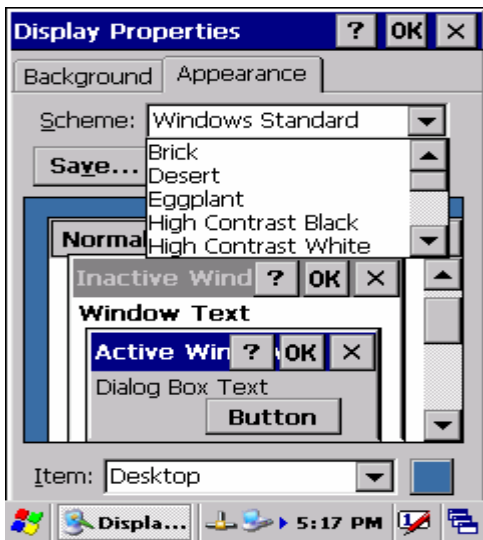



Figure 3-52 Display properties

3.2.9 Input Panel

Table 3-30 Display properties

ICON	ITEM & FUNCTION
 Input Panel	<ul style="list-style-type: none"> • “Input panel” Tab :(Figure 3-53) ✓ Select the input method you want to change. ✓ To change the Soft Keyboard Options , tap “Option” (Figure 3-54) .

	<ul style="list-style-type: none"> ● “Options” Tab : <ul style="list-style-type: none"> ✓ Change the soft keyboard options as desired, selecting from: <ul style="list-style-type: none"> ➢ Large or small keys ➢ Using gestures for space, black-space shift, and enter. ✓ To exit the soft keyboard Options, press “OK” on the control bar, or press the <Enter> key on the keypad. ✓ To exit the Input Panel, press “OK” on the control bar, or press the <Enter> key on the keypad.
--	---

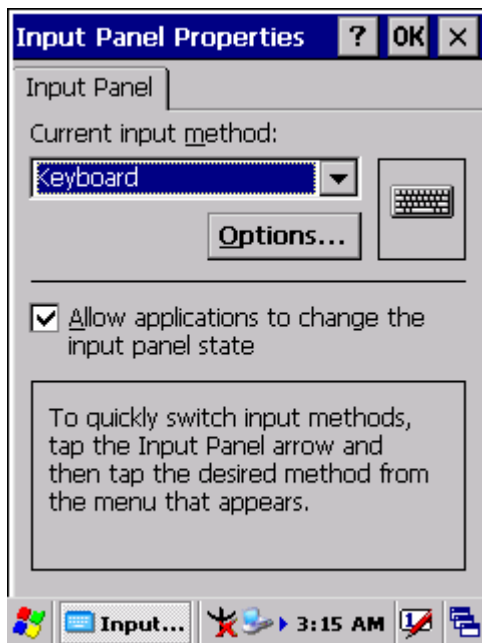


Figure 3-53 Input Panel Properties

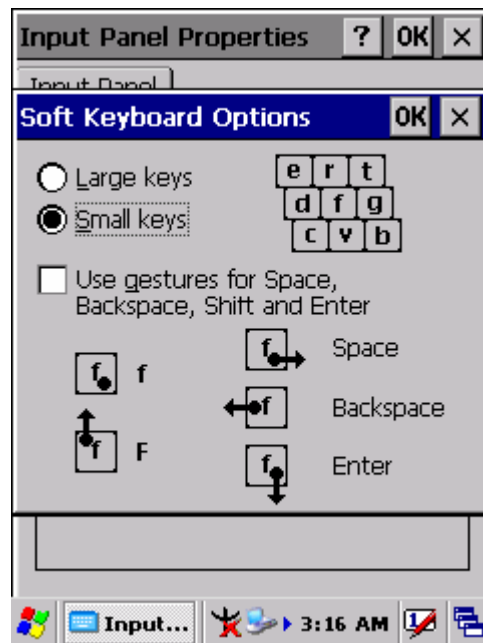



Figure 3-54 Input Panel Properties

3.2.10 Internet Options

Table 3-31 Internet Options

ICON	ITEM & FUNCTION
	<ul style="list-style-type: none"> ● “General” Tab : (Figure 3-55)
	<ul style="list-style-type: none"> ✓ Type in the URL of desired start page and the desired search engine. You also change the Cache Size, clear the Cache and Clear the History..
	<ul style="list-style-type: none"> ● “Connection” Tab : (Figure 3-56)
	<ul style="list-style-type: none"> ✓ Modify the network access setting as desired.

<ul style="list-style-type: none"> ● “Security” Tab (Figure 3-57)
<ul style="list-style-type: none"> ✓ Modify the security settings as desired. You can enable any of the following by tapping the checkbox: <ul style="list-style-type: none"> ➤ Allow cookies ➤ Allow TLS 1.0 security ➤ Allow SSL 2.0 security ➤ Allow SSL 3.0 security ➤ Warm when switching across secure and insecure areas.
<ul style="list-style-type: none"> ● “Advanced” Tab (Figure 3-58)
<ul style="list-style-type: none"> ✓ Modify the security settings as desired. You can enable any of the following by tapping the checkbox: <ul style="list-style-type: none"> ➤ Display Image in pages ➤ Play sounds in pages ➤ Enable scripting ➤ Display a notification about every script error ➤ Underline links- <ul style="list-style-type: none"> ○ Never ○ Always ○ Hover

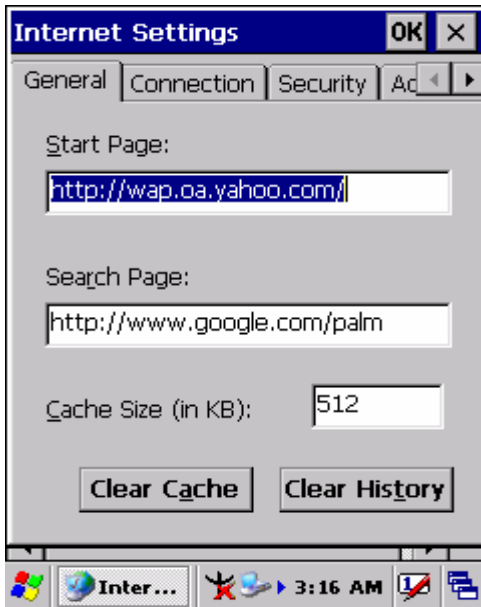


Figure 3-55 Internet Settings

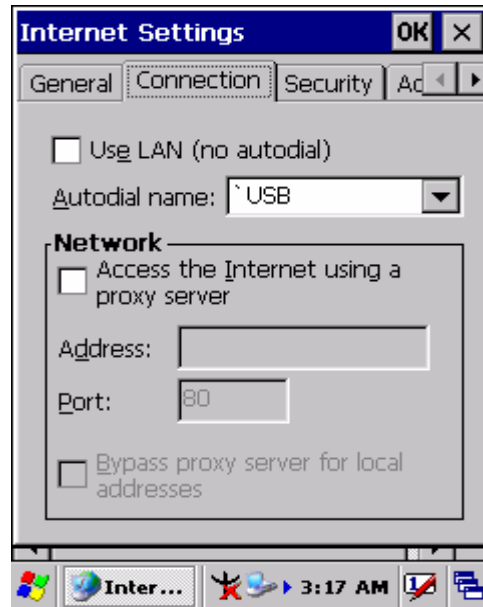


Figure 3-56 Internet Settings

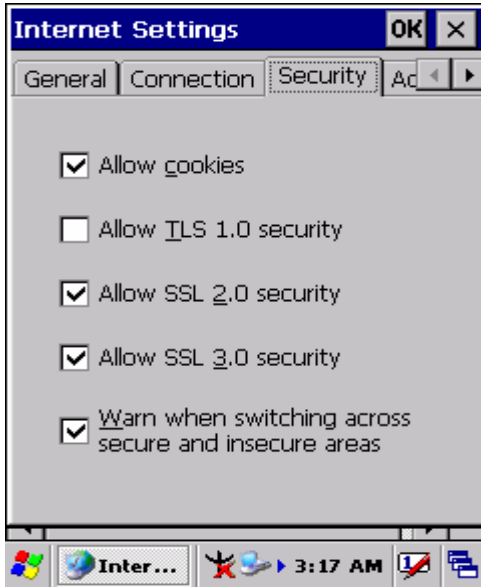


Figure 3-57 Internet Settings

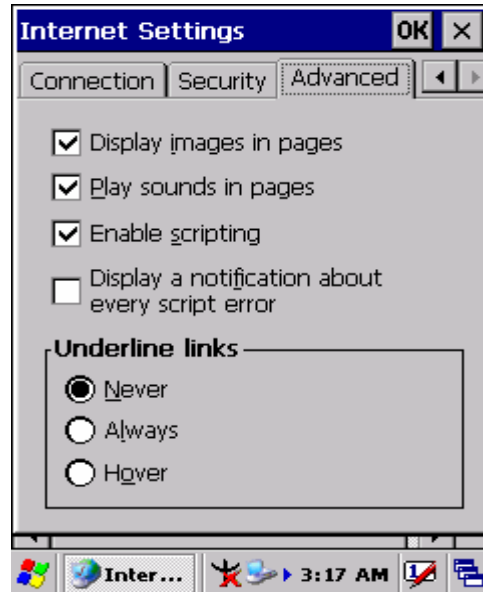



Figure 3-58 Internet Settings

3.2.11 Keyboard

Table 3-32 Keyboard

ICON	ITEM & FUNCTION
 Keyboard	<ul style="list-style-type: none"> <li data-bbox="427 1182 1326 1227">● “Repeat” Tab : (Figure 3-59) <li data-bbox="427 1234 1326 1317">✓ To change the amount of time between depressions before repetition starts, adjust the Repeat delay slider <li data-bbox="427 1323 1326 1361">✓ To change the repeat rate, adjust the Repeat rate slider. <li data-bbox="427 1368 1326 1406">✓ Test your new setting. <li data-bbox="427 1413 1326 1451">✓ Tap “OK” to exit the “Keyboard” Tab.

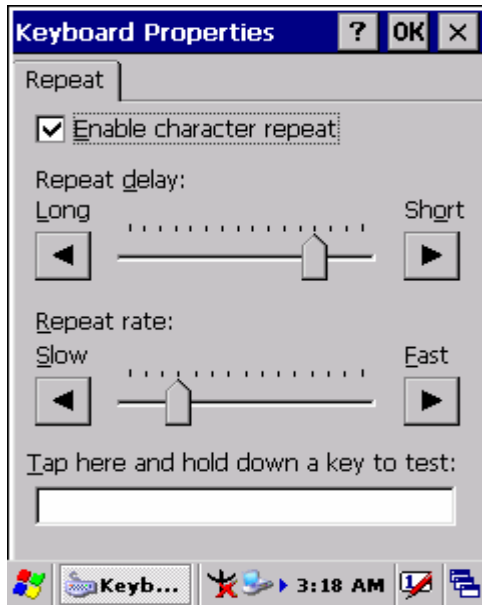



Figure 3-59 Keyboard Properties

3.2.12 Network and Dial-up Connections

Table 3-33 Network and Dial-up Connections

ICON	ITEM & FUNCTION
 <p>Network and Dial-up Co...</p>	<ul style="list-style-type: none"> ● “Connection” Tab : ✓ To create a “Dial-up Connection”: <ul style="list-style-type: none"> ➢ Double-tap the “Make New connection”. ➢ In the “Make New Connection” dialog box, enter a name for the connection. ➢ Select “Dial-Up Connection”. ➢ Select the “Next” button. ➢ Select the modem you want use. ➢ Select “Configure” ➢ Under “Connection Reference”, use the default settings provided. If you can’t connect using these settings, see your ISP or network administrator for specific information. If you want to always enter a phone number before connecting, Select “Manual Dial”. Select “OK”.

- Select “**TCP/IP Settings**”. In the “**General**” tab, ensure “**Use Server-assigned IP address**” is selected. In the “**Name Servers**” tab, ensure “**Use Server-assigned addresses**” is selected, and select “**OK**”. If you are unable to connect with these default settings, see your ISP or network administrator for specific TCP/IP information.
- Select the “**Next**” button and type the telephone number.
- Select the “**Finish**” button.

The connection you just created appears as an icon in the “**Network and Dial-up Connections**” folder.

- ✓ Set up a **point-to-Point Protocol (PPP)** account with an ISP and obtain the following information:
 - Access telephone number
 - User name
 - Password

Once you have established an account, create a new connection on your device. When creating this connection, you should be able to use all of the default TCP/IP settings provided in the Make New Connection Wizard. If you can’t connect using the default settings, contact your ISP or access your ISP’s Web site for specific TCP/IP information as well as primary and secondary DNS address.

- ✓ **Modify connection setting**
 - Select **Start > Settings > Network and Dialup Connections**
 - Select the icon for connection settings you want to modify.
 - Select **File > Properties**, or double- tap the appropriate icon.
 - Select desired options. There may be additional settings that depend on the connection. To modify, select the icon and select the icon and select **Advanced Settings...** from the menu.



Figure 3-60 Network and Dial-up Connections

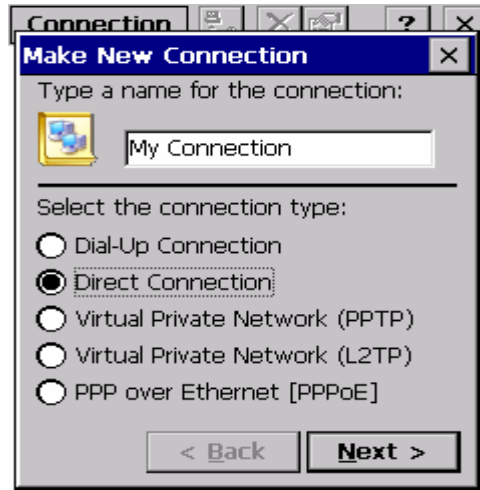


Figure 3-61 Network and Dial-up Connections



Figure 3-62 Network and Dial-up Connections



Figure 3-63 Network and Dial-up Connections



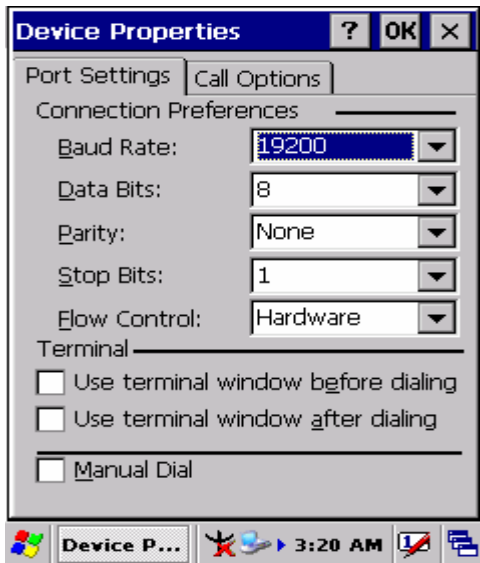


Figure 3-64 Network and Dial-up Connections

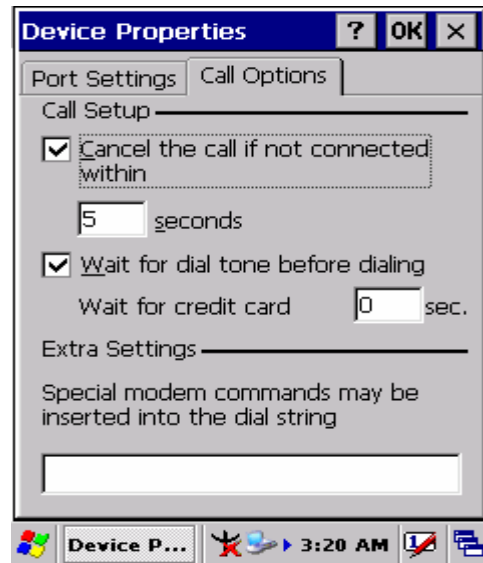


Figure 3-65 Network and Dial-up Connections

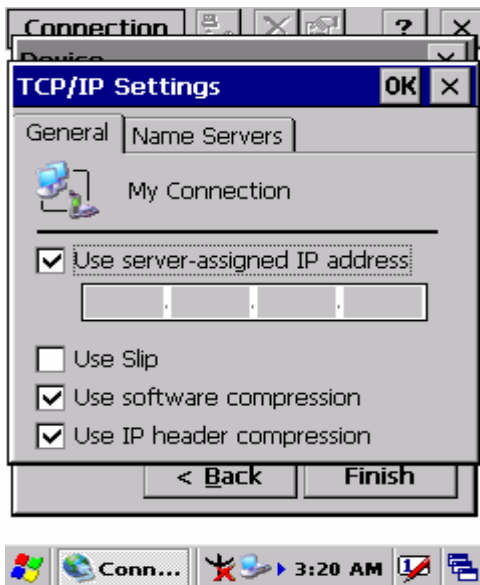


Figure 3-66 Network and Dial-up Connections

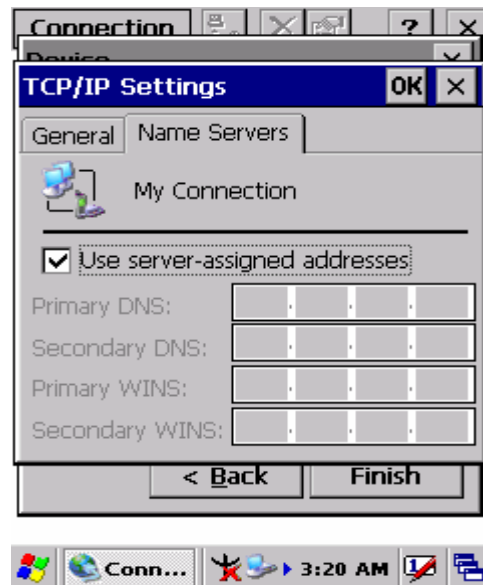


Figure 3-67 Network and Dial-up Connections

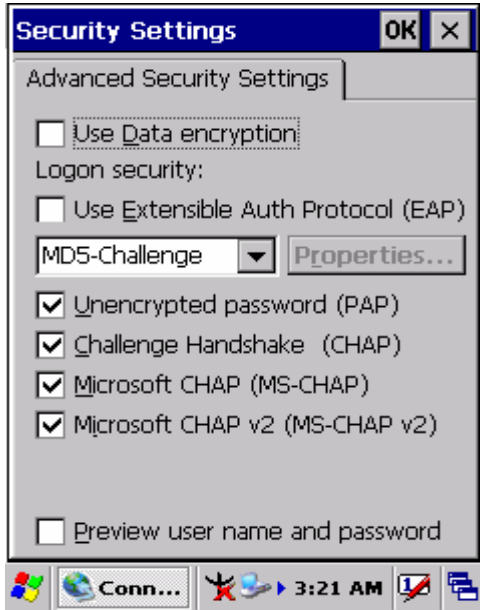


Figure 3-68 Network and Dial-up Connections

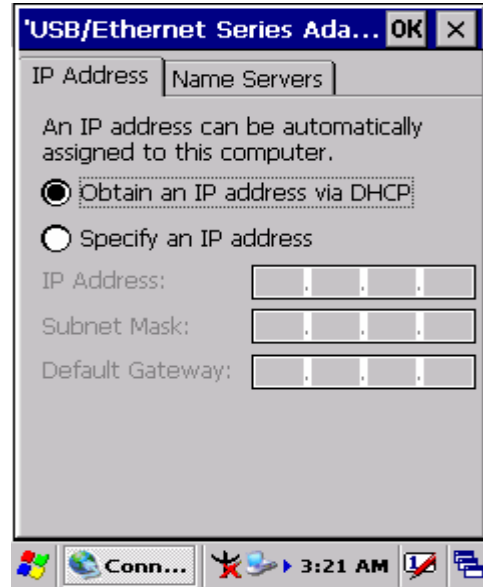


Figure 3-69 Network and Dial-up Connections

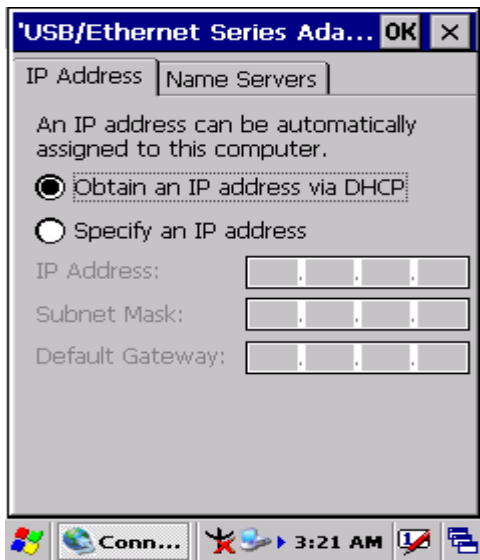


Figure 3-70 Network and Dial-up Connections

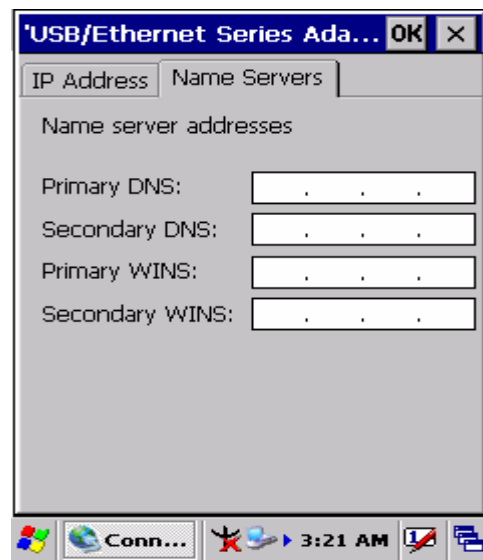



Figure 3-71 Network and Dial-up Connections

3.2.13 Owner

Table 3-35 Owner

ICON	ITEM & FUNCTION
	<ul style="list-style-type: none"> • “Identification” Tab : (Figure 3-72)

	<ul style="list-style-type: none"> ✓ Fill in or edit the data as desired. ✓ To have this information displayed when you start your device, select “Display Owner Identification” at Power On. ✓ To set up identification for remote networks, see Setting up identification for remote networks.
	<ul style="list-style-type: none"> ● “Network ID” Tab: (Figure 3-73)
	<ul style="list-style-type: none"> ✓ Enter the user name, password, and domain name you use to log on to remote network.



Figure 3-72 Owner Properties

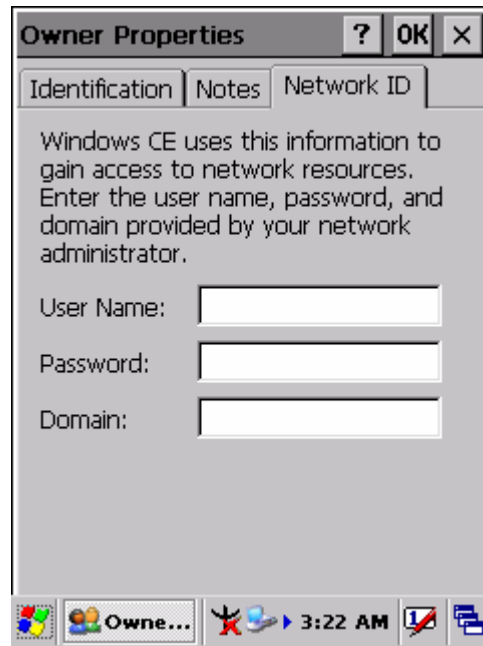


Figure 3-73 Owner Properties

3.2.14 Password

Table 3-36 Password



ICON	ITEM & FUNCTION
 Password	<ul style="list-style-type: none"> ● “Password Setting” Tab : (Figure 3-74) ✓ Enter the password ✓ In the “Confirm password” box, enter the password again. ✓ To require the password on startup, select “Enable password protection at power- on“. and/or select “Enable password protection for screen saver” ✓ To exit the Password control panel, press “OK” from the control bar, or press the <Enter> key on the keypad.



Figure 3-74 Password Properties

3.2.15 PC Connection

Table 3-37 PC Connection

ICON	ITEM & FUNCTION
 PC Connection	<ul style="list-style-type: none"> <li data-bbox="427 1279 1331 1317">● “PC Connection” Tab : (Figure 3-75) <li data-bbox="427 1328 1331 1413">✓ Select the first checkbox to enable direct connections to the desktop computer. (Figure 3-75) <li data-bbox="427 1424 1331 1509">✓ Tap the “Change Connection...” button to modify the connection method from USB or Serial. (Figure 3-76) <li data-bbox="427 1520 1331 1606">✓ To exit the “Change Connection” dialog, press “OK” from the control bar, or press the <Enter> key on the keypad. <li data-bbox="427 1617 1331 1744">✓ To exit the “PC Connection” properties control panel, press “OK” from the control bar, or press the <Enter> key on the keypad.

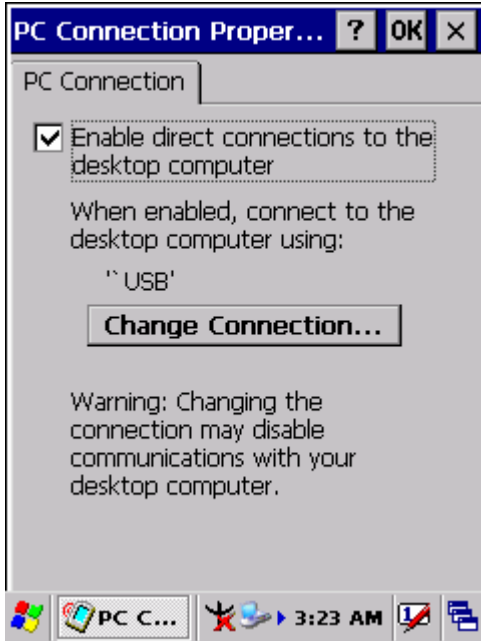



Figure 3-75 PC Connection






Figure 3-76 PC Connection

3.2.16 Power

Table 3-38 Power

ICON	ITEM & FUNCTION
 Power	<ul style="list-style-type: none"> ● “Battery” Tab : (Figure 3-77) ✓ Provide change level indicators for Main battery and Backup battery. ✓ Provide remaining power capacity of main battery. ✓ If a “Main Batteries very Low” warning message shows, the remaining battery life is around 30 minutes to SC700 shuts down. (Figure 3-81) ✓ The PDT will shutdown during the main batteries capacity is around 0% ✓ To exit Battery control panel, press “OK” from the command bar, or press <Enter> key on keypad. ● “ Schemes” Tab: (Figure 3-78)

	<ul style="list-style-type: none"> ✓ The Scheme Tab allows you to determine the time to switch state to Suspend mode when using either Battery Power or AC Power. ✓ Select Battery Power or AC Power as the power scheme from the pull-down list.(Figure 3-78) ✓ Select the time to suspend mode from the pull-down list. (Figure 3-79)
	<ul style="list-style-type: none"> ● “Device Status” Tab: (Figure 3-80)
<p>Note:</p> 	<p>This ICON inside the Task Bar shows that AC adapter provides power to the PDT</p>
	<p>The ICON inside the Task Bar shows that Main Batteries provides the power to the PDT.</p>
	<p>The ICON inside the Task Bar shows that AC adapter provides the power to the PDT and is charging the main batteries..</p>

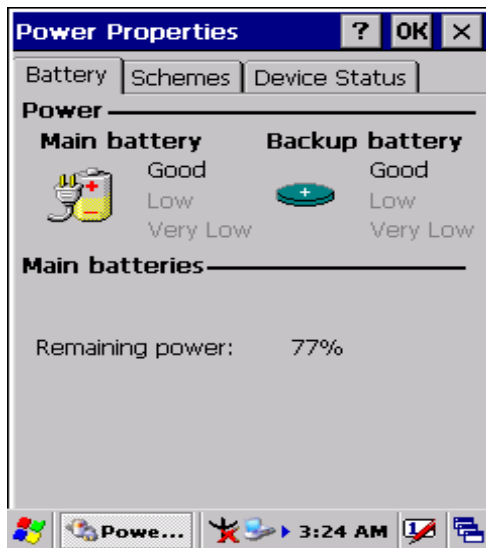


Figure 3-77 Power

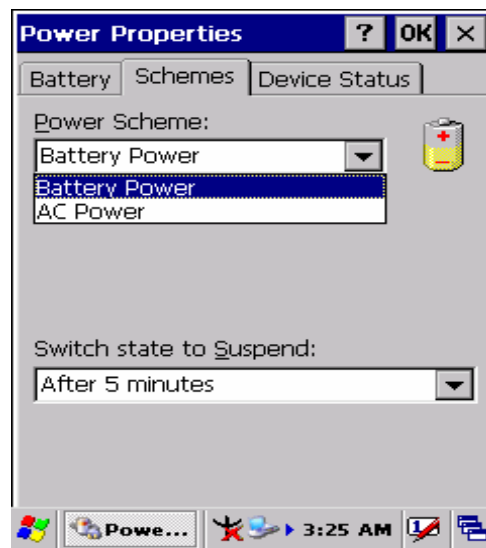


Figure 3-78 Power

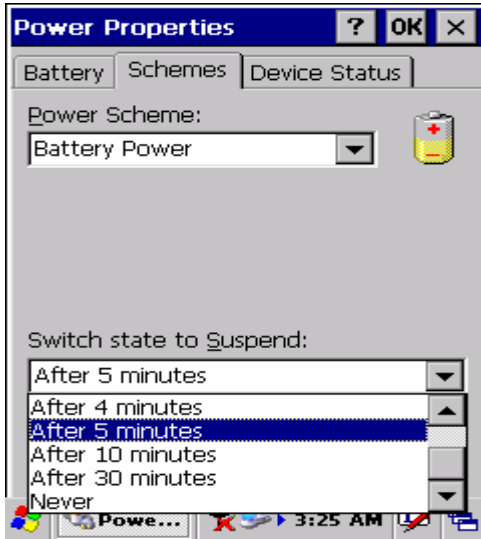


Figure 3-79 Power

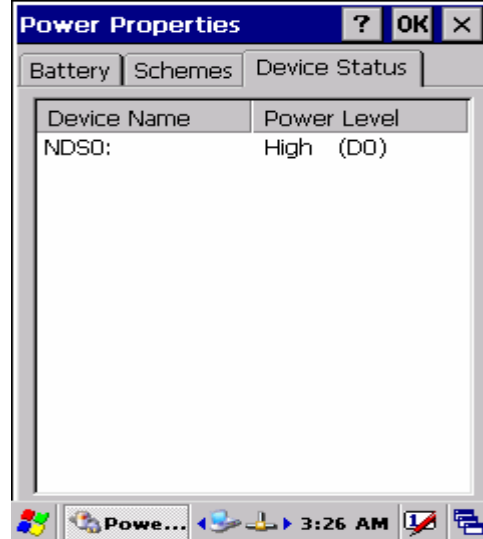


Figure 3-80 Power

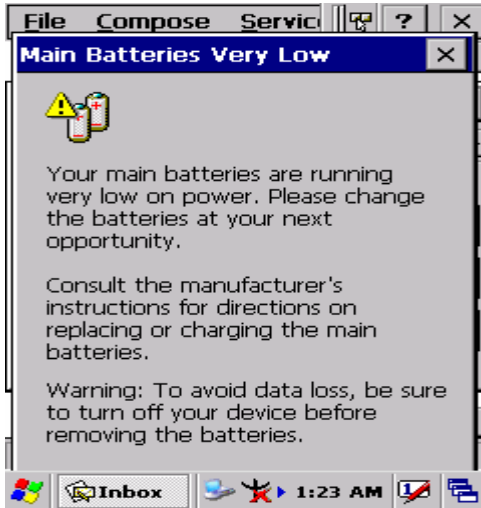



Figure 3-81 Power

3.2.17 Regional Settings

Table 3-39 Regional Settings

ICON	ITEM & FUNCTION
 Regional Settings	<ul style="list-style-type: none"> ● “Region” Tab : (Figure 3-82) ✓ Select the desired location/language. ✓ Review the Appearance samples in the bottom half of the screen. ✓ Select the Tab at the top for any settings you wish to change, Options to modify include Number, Currency, Time, and Date.

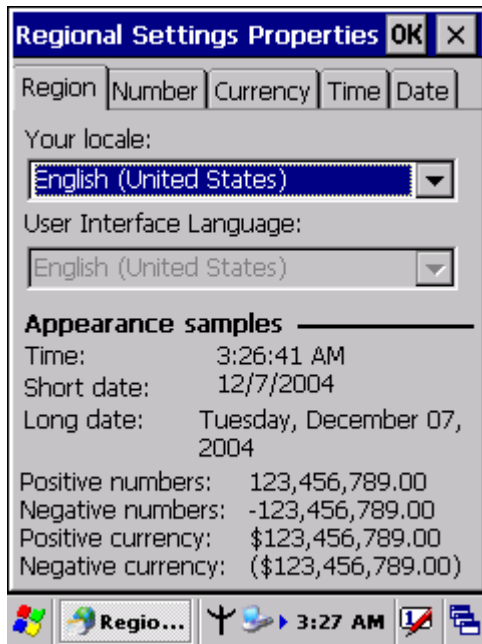



Figure 3-82 Regional Settings


3.2.18 Remove Programs

Table 3-40 Remove Programs

ICON	ITEM & FUNCTION
 Remove Programs	<ul style="list-style-type: none"> ● “Remove Programs” Tab : ✓ Only user installed programs can be removed. ➤ Select the program you wish to remove from the list and press “remove” button.

3.2.19 Storage Manager

Table 3-41 Storage Manager

ICON	ITEM & FUNCTION
 <p>Storage Manager</p>	<ul style="list-style-type: none"> • “Storage Manager” Tab : (Figure 3-83) ✓ To change Storage properties control panel default settings: <ul style="list-style-type: none"> Insert. Compact Flash(CF) or Secure digital (SD) storage card into the unit. ➤ Select Start > Settings > Control Panel > Storage Properties ➤ From the “Storage Info” pull-down list, select the desired storage device. ➤ You can also format, dismount, and create partitions on storage devices using this control panel. ➤ To save and exit the Storage Properties control panel, press “OK” from the control bar, or press the <Enter> key on the keypad. Caution: Dismounting or formatting the DiskOnChip will erase all files and program stored in Flash Memory

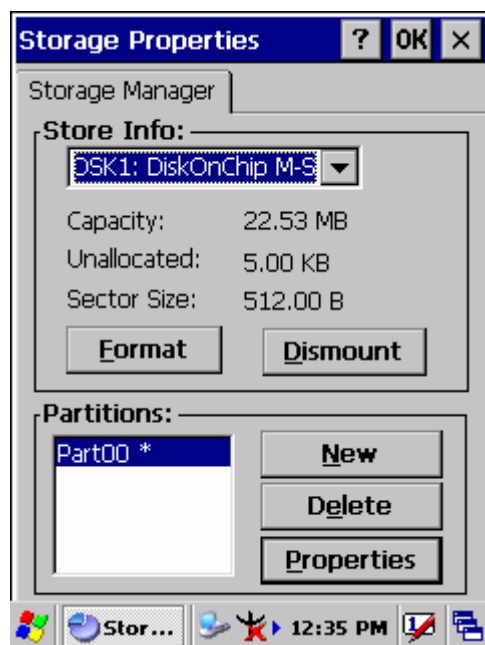



Figure 3-83 Storage Manager

3.2.20 Stylus

Table 3-42 Stylus

ICON	ITEM & FUNCTION
 Stylus	<ul style="list-style-type: none"> ● “Double-Tap” Tab : (Figure 3-84, Figure 3-85) ✓ Double-tap the checkerboard grid at a comfortable speed. ✓ Double-tap clipboard to test your settings ✓ The function is OK if the figures are changed from Figure 3-84 to Figure 3-85. ✓ To tap “OK” to exit the Stylus Properties.
	<ul style="list-style-type: none"> ● “Calibration”: (Figure 3-86, Figure 3-87) ✓ In the Welcome Wizard, you tapped a target with the stylus to set the amount of pressure needed for the screen to respond to your stylus taps. ✓ Please also see 2.4.3 Calibration of the touch Screen

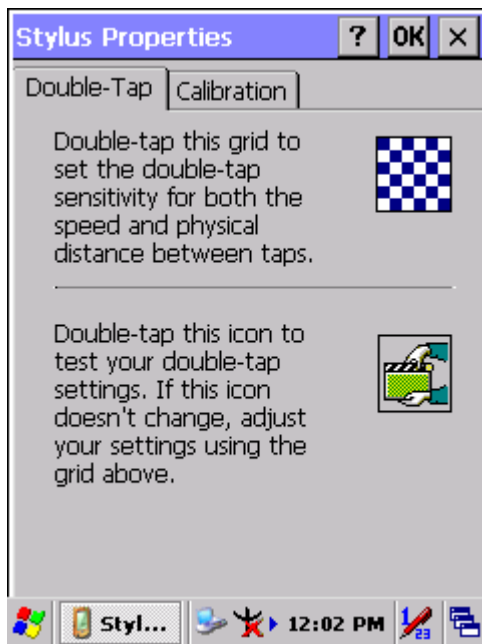


Figure 3-84 Stylus Properties

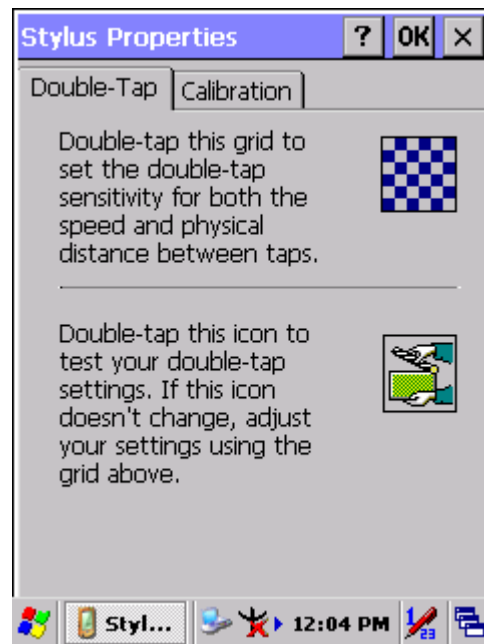


Figure 3-85 Stylus Properties



Figure 3-86 Stylus Properties

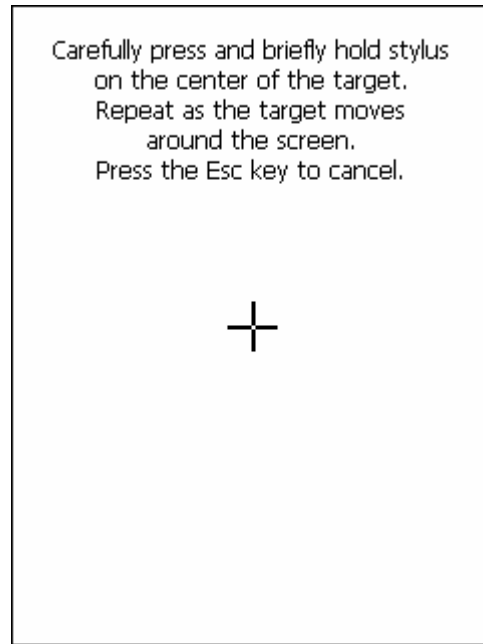



Figure 3-87 Stylus Properties

3.2.21 System

Table 3-43 System

ICON	ITEM & FUNCTION
 System	<ul style="list-style-type: none"> ● “General” Tab : (Figure 3-88)
	<ul style="list-style-type: none"> ✓ To show: <ul style="list-style-type: none"> ➢ Firmware information ➢ Information about Processor type, Memory size, Expansion card
	<ul style="list-style-type: none"> ● “Memory” : (Figure 3-89)
	<ul style="list-style-type: none"> ✓ Move the slider to adjust memory allocation. Default storage memory is normally is normally set to about 8MB with the reminder assigned to Program memory. ✓ Press the “OK” key on the Keypad. <p>Note: the difference is occupied by OS between the RAM size in Information properties and total memory size of storage memory and program memory</p>
	<ul style="list-style-type: none"> ● “Device Name” Tab : (Figure 3-90)
	<ul style="list-style-type: none"> ✓ Your device uses this information to identify itself to other computers. ✓ The input panel will open to facilitate data entry.

	<ul style="list-style-type: none"> ✓ To close the Device Name, press the “OK” button, or press the <Enter> key on keypad.
	<ul style="list-style-type: none"> • “Copyrights” Tab: (Figure3-91)
	<ul style="list-style-type: none"> ✓ Refer to this tab for specific copyright data. As a user, you are responsible to read this statement.



Figure 3-88 System Properties

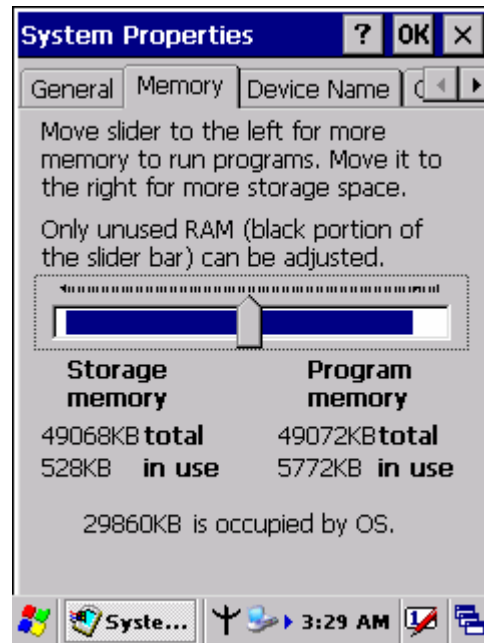


Figure 3-89 System Properties



Figure 3-90 System Properties

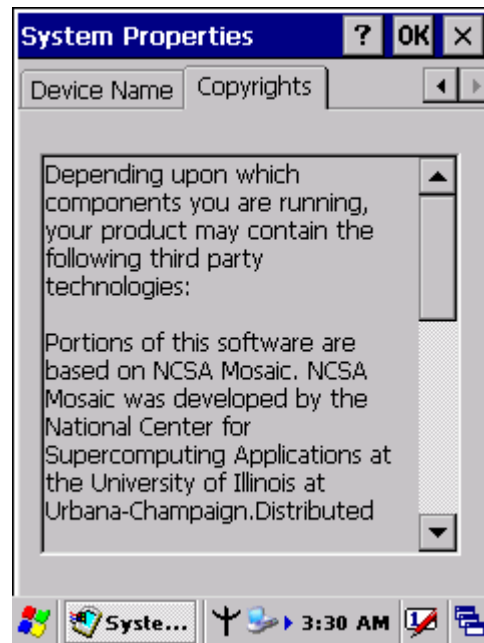



Figure 3-91 System Properties

3.2.22 Volume & Sounds Properties

Table 3-44 Volume & Sound

ICON	ITEM & FUNCTION
 Volume & Sounds	<ul style="list-style-type: none"> • “Volume” Tab : (Figure 3-92)
	<ul style="list-style-type: none"> ✓ The factory default for Volume is the forth level. You can adjust the volume to your environment and comfort. <ul style="list-style-type: none"> ➤ Set the volume by adjusting the slider from Soft to Loud, or press Right or Left edge of Navigation keys
	<ul style="list-style-type: none"> • “Sounds ” Tab: (Figure3-93)
	<ul style="list-style-type: none"> ✓ Enable the desired sounds for key clicks, screen taps, notifications, and applications.

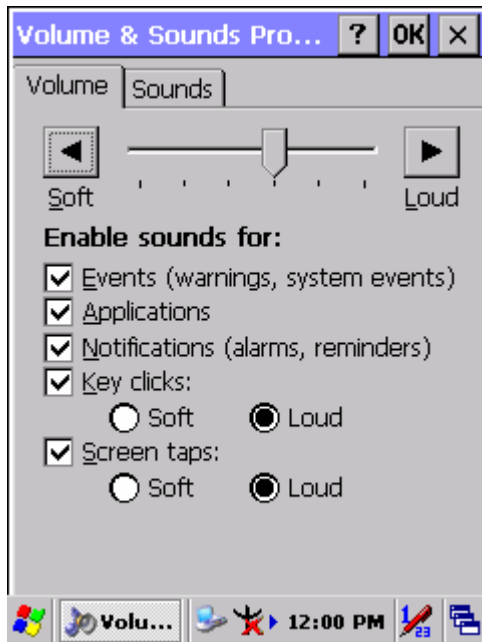


Figure 3-92 Volume & Sound

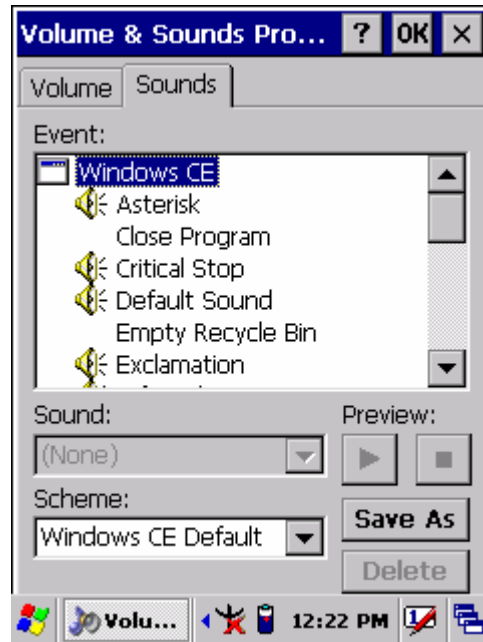


Figure 3-93 Volume & Sound

3.3 Taskbar and Start Menu

Table 3-45 Taskbar and Start menu

ICON	ITEM & FUNCTION
Taskbar and Start Menu	<ul style="list-style-type: none"> ● “General” Tab :
	<ul style="list-style-type: none"> ✓ In this tab, You can change the position of the Taskbar and Start menu <ul style="list-style-type: none"> ➤ Is always on top or not ➤ Auto hide or not ➤ Show Clock or not
	<ul style="list-style-type: none"> ● “Advanced ” Tab:
	<ul style="list-style-type: none"> ✓ Tap the “Clear” button to remove the contents of the Documents Menu. ✓ Enable “<input type="checkbox"/> Expand Control Panel” to list all icons of Control Panel from top to bottom.

Chapter 4. Communication

4.1 Installing & Setting Up Microsoft ActiveSync

4.1.1 Installing Microsoft ActiveSync on the Host PC

Microsoft ActiveSync is a file transfer tool to synchronize the files on a PC with the files on your PDT.

To install Microsoft ActiveSync, complete the following steps on the PC:

1. Go to the Microsoft Windows CE.NET website and download the latest current version of ActiveSync:
<http://www.microsoft.com/mobile/pockeypc/downloads/> .
2. Install the latest version of Microsoft ActiveSync on the host PC.
3. Open ActiveSync.
4. Select **File > Communication Settings** from ActiveSync's menu bar.
5. Go to "Using ActiveSync" on page 4-1 to continue using ActiveSync.

4.1.2 Connecting PDT to Host PC

1. You can use either the USB/Serial (RS232) port of Single Dock or a USB/Serial (RS232) cable to connect the PDT to the Host PC.
 - To use the dock, you must first insert the PDT into the slot, making sure that the unit is firmly seated the dock.
 - To use the cable, connect the USB/Serial cable to the PDT.
2. Connect the USB/Serial dock or cable to the Host PC's serial port or USB port.
3. Connect the dock or PDT to the power adapter and power source.

4.2 Using ActiveSync

Use ActiveSync to transfer and synchronize files between the PDT and the Host PC.

4.2.1 Setting up a Partnership

During the Microsoft ActiveSync installation, you were prompted to create a partnership with your mobile device. When you set up a partnership, you select synchronization and file conversation settings, which are contained in a file on your desktop computer. This file enables your desktop computer to recognize your device.

Only devices that have a partnership with a desktop computer can synchronize information between the two computers.

For more information on partnerships, please refer to your Microsoft ActiveSync documentation or help file.

Transferring Files:

To transfer files, complete the following steps on the host PC:

- ✓ Select **Start > Programs > Communication > (Serial, or USB) ActiveSync.**
- ✓ Double-click on the selected **ActiveSync** icon
- ✓ After you have established a connection with PDT, tap the “**Explore**” button at the top of the **ActiveSync** window (or select **Explore** from the File menu).
- ✓ Navigate to the target directory on your PDT and copy the desired file by using the **Copy/paste** method or dragging and dropping the desired file(s) into the folder.

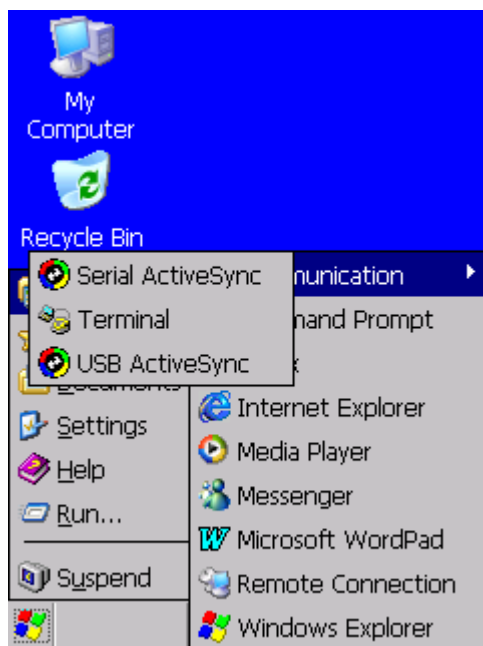


Figure 4-1 **Communication**