

**Shinsel**



*Mobile Printer DP-2*

## Mobile Printer

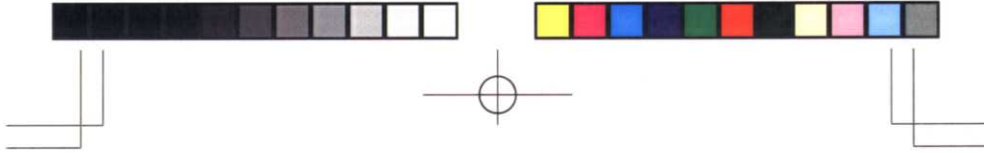
Instruction Manual



### IMPORTANT

- Read this manual thoroughly, and do not perform installation, operation, maintenance, or inspection unless you fully understand all of the contents.
- Keep this manual in a safe place where you can refer to it easily while installing, operating, and carrying out maintenance or inspections.





### ■Preface...

Thank you for selecting our model DP-2.

This product does not contain toxic substances specified by the RoHS and WEEE Directives.

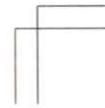
This machine is a mobile printer developed based on a state-of-the-art electronics technology and accumulated experiences. For proper and safe use of this machine, read this instruction manual thoroughly to become aware of the machine and the related precautions before working for installation and operation.

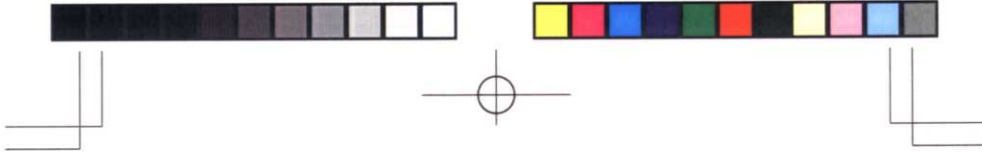
After the installation, keep this manual at the place where you can refer to whenever it is necessary.



**SHINSEI INDUSTRIES Co. Ltd., 2007**

All rights are reserved. No part of this publication may be reproduced, stored in a retrieval system, or transmitted, in any form, or by any means, mechanical, electronic, photocopying, recording, or otherwise, without prior written permission of SHINSEI.





### **FC**

This device complies with Part 15 of the FCC Rules. Operation is subject to the following two conditions: (1) this device may not cause harmful interference, and (2) this device must accept any interference received, including interference that may cause undesired operation.

#### **FCC WARNING**

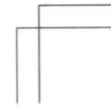
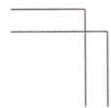
Changes or modifications not expressly approved by the party responsible for compliance could void the user's authority to operate the equipment.

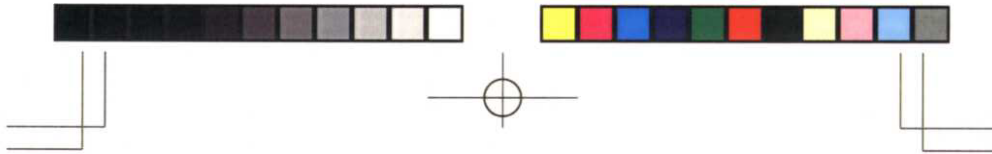
#### **NOTICE**

This equipment has been tested and found to comply with the limits for a Class A digital device, pursuant to part 15 of the FCC Rules. These limits are designed to provide reasonable protection against harmful interference when the equipment is operated in a commercial environment.

This equipment generates, uses and can radiate radio frequency energy and, if not installed and used in accordance with the instructions, may cause harmful interference to radio communications. Operation of this equipment in a residential area is likely to cause harmful interference in which case the user will be required to correct the interference at his own expense.

This transmitter must not be co-located or operated in conjunction with any other antenna or transmitter.  
This equipment complies with FCC radiation exposure limits set forth for controlled equipment and meets the FCC radio frequency (RF) Exposure Guidelines in Supplement C to OET65. This equipment has very low levels of RF energy that it is deemed to comply without testing of specific absorption ratio (SAR).





## IC

Operation is subject to the following two conditions: (1) this device may not cause interference, and (2) this device must accept any interference, including interference that may cause undesired operation of this device.

This equipment complies with IC radiation exposure limits set forth for uncontrolled equipment and meets RSS-102 of the IC radio frequency (RF) Exposure rules. This equipment has very low levels of RF energy that it is deemed to comply without testing of specific absorption ratio (SAR).

## CE

Europe - EU Declaration of Conformity  
We, Shinsei Industries Co., Ltd. hereby declare that this device, model DP-2 is in compliance with the essential requirements and other relevant provisions of the R&TTE Directive 1999/5/EC.

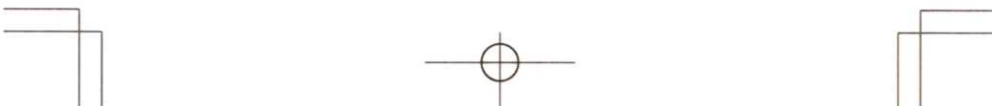
### ■ Bluetooth™ Communications

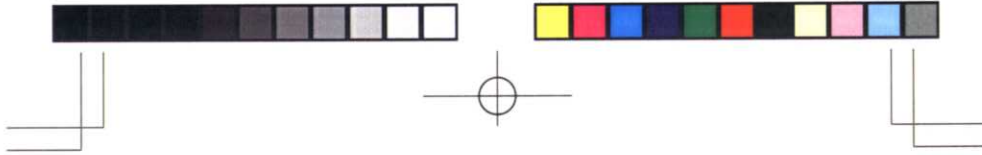
This device with built-in wireless telecommunication equipment conforms to the standards required in the region where the device is used. This device assumes an interference distance of about ten meters or less. Using this device near microwave ovens, wireless LAN equipment, etc. may significantly reduce the communication distance or make communication impossible.

Do not disassemble or modify this device.

This device is equipped with a Bluetooth module that obtained product certification.

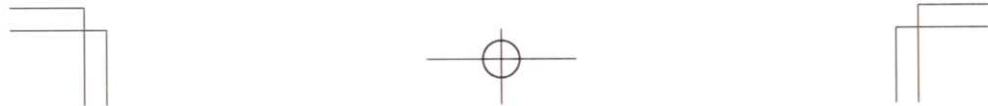
Bluetooth™ is a trademark of Bluetooth SIG, Inc., U.S.A., and is used herein under license.

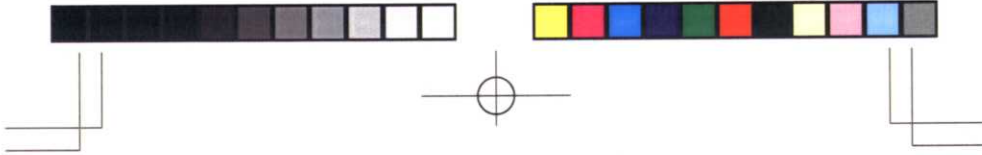




## Table of Contents

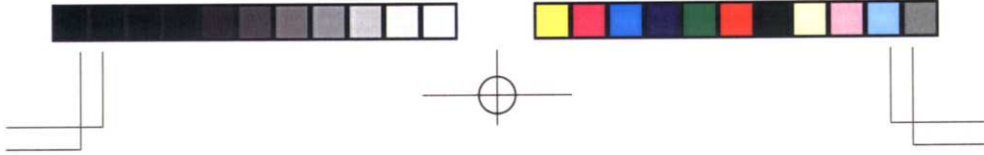
1. Precaution Symbols .....	7
2. For your longer use .....	11
3. Confirmation of This Machine .....	13
3-1. Printer Unit .....	13
3-2. Accessories .....	14
4. Optional Accessories .....	15
5. Names and Functions of Each Part .....	16
6. When using this machine with the battery pack .....	20
6-1. Installing the battery pack .....	20
6-2. Removing the battery pack .....	22
7. Charging the battery pack .....	23
7-1. Battery charge is needed in one of the following cases .....	23
7-2. Battery charging procedure .....	24
7-3. Before using the battery pack .....	26
8. When charging the battery pack with the charger adapter (sold separately) .....	28
8-1. Installing the charger adapter .....	28
8-2. Removing the charger adapter .....	29
9. Setting the media roll .....	30
9-1. In the case of printing labels in the Tear-Off mode .....	30
9-2. In the case of printing labels in the Peel-Off mode .....	33





## Table of Contents



10. Power ON-OFF .....	37
10-1. Turn on the power .....	37
10-2. Turn off the power .....	37
11. Contrast adjustment of the liquid crystal display .....	38
12. Adjustment of the backlight lighting time .....	40
13. Test Printing .....	42
13-1. Test printing method 1 .....	42
13-2. Test printing method 2 .....	44
14. Printing the Configuration List .....	45
15. Confirmation of RS-232C set value .....	47
16. Confirmation of Bluetooth™ communication set value .....	49
17. Connecting the RS-232C .....	51
18. Using the Bluetooth™ communications .....	51
19. Label issuing mode .....	52
20. Error messages .....	53
21. Daily Check and Cleaning Method .....	55
21-1. Printing check (Test pattern printing) .....	55
21-2. Execution of the head check .....	56
21-3. Cleaning of the thermal print head .....	56
21-4. Cleaning of the platen roller and the peel roller .....	58
21-5. Cleaning of each sensor .....	59
22. Specifications of this machine .....	60
23. Important Notices .....	63



## 1. Precaution Symbols

This product is manufactured for use according to proper procedures by a qualified operator and only for the purposes described in this manual.

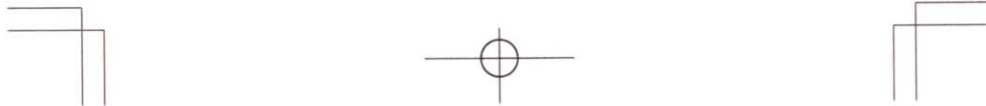
Precaution symbols in this manual are divided into two categories, depending on the level of danger, or seriousness of potential injury. The definition of each precaution is shown below. Failure to heed these precautions may result in bodily injury or damage to the machine.

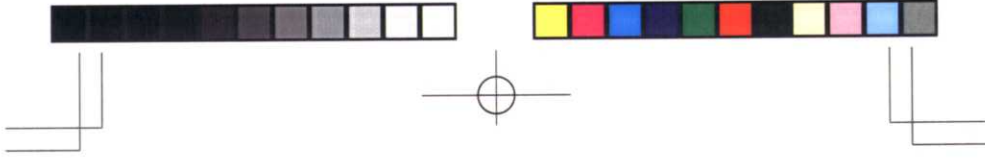
 <b>WARNING</b>	Indicates information that, if not heeded, could possibly result in loss of life or serious injury.
 <b>CAUTION</b>	Indicates information that, if not heeded, could result in relatively serious or minor injury, damage to the machine, or faulty operation.







This machine is manufactured for use according to proper procedures by a qualified person and only for the purposes described in this manual. The following symbols are used in this manual.

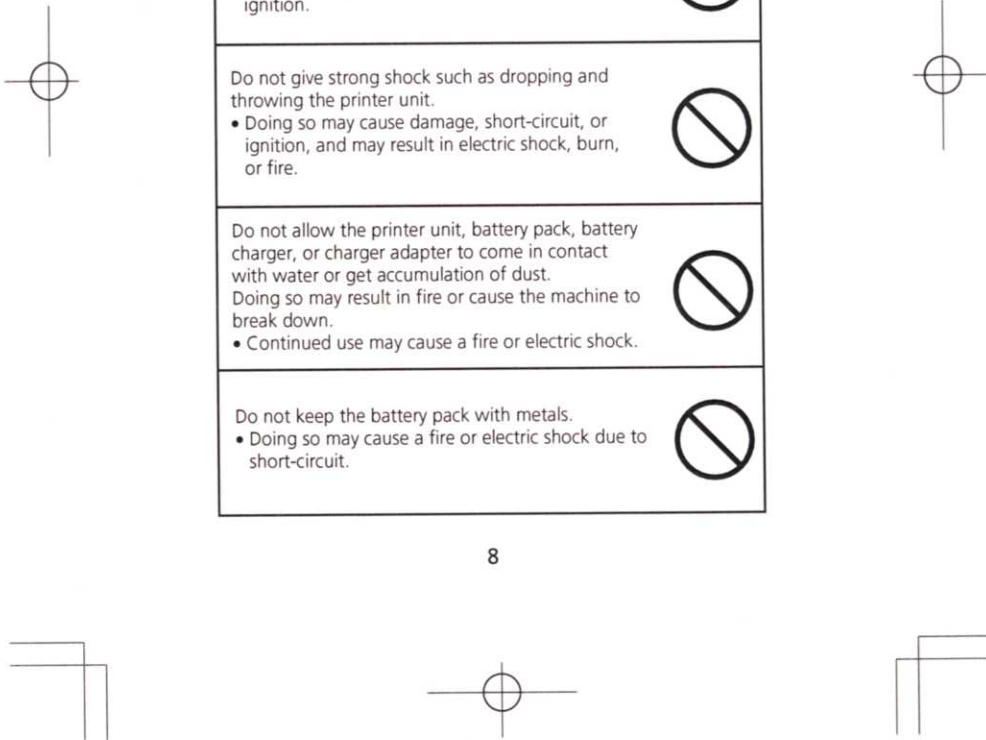
Always heed the information provided in this manual. Failure to heed precautions can result in personal injury or property damage.

Heed the following precautions information provided in this manual for your safety

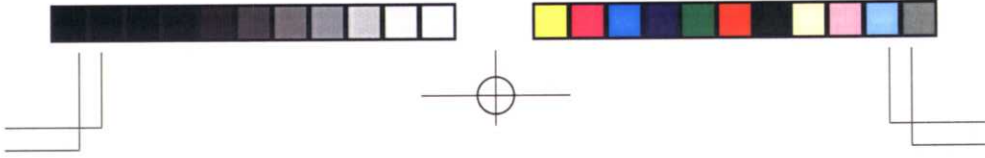









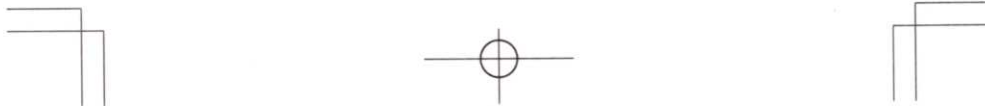
 <b>WARNING</b>	
<p>Do not disassemble or modify the printer unit, battery pack, battery charger, charger adapter, etc. Doing so may result in injury or cause the machine to break down.</p> <ul style="list-style-type: none"><li>• Doing so may cause damage, short-circuit, or ignition, and may result in electric shock, burn, or fire.</li></ul>	
<p>Do not charge anything other than the specified battery pack with the battery charger.</p> <ul style="list-style-type: none"><li>• The battery pack may cause heat, burst, or ignition.</li></ul>	
<p>Do not give strong shock such as dropping and throwing the printer unit.</p> <ul style="list-style-type: none"><li>• Doing so may cause damage, short-circuit, or ignition, and may result in electric shock, burn, or fire.</li></ul>	
<p>Do not allow the printer unit, battery pack, battery charger, or charger adapter to come in contact with water or get accumulation of dust. Doing so may result in fire or cause the machine to break down.</p> <ul style="list-style-type: none"><li>• Continued use may cause a fire or electric shock.</li></ul>	
<p>Do not keep the battery pack with metals.</p> <ul style="list-style-type: none"><li>• Doing so may cause a fire or electric shock due to short-circuit.</li></ul>	

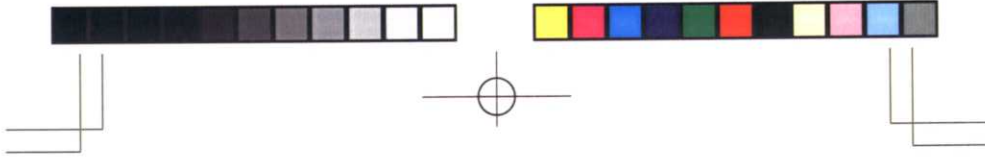









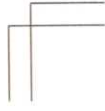
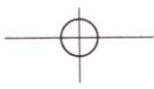
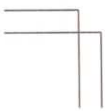


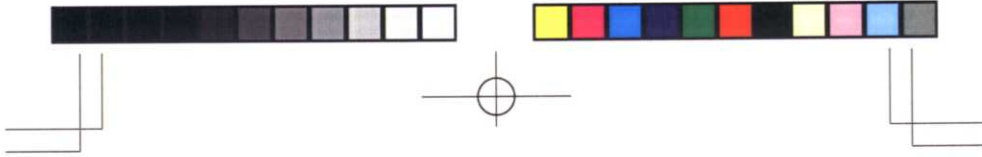
 <b>CAUTION</b>	
Do not leave the battery pack charged for a long time.	
After the charge, make sure to pull out the plug of the power supply cord of the battery charger or the charger adapter from the AC outlet.	
The operation time may become less because the battery pack is naturally discharged and the power decreases. (It is not a breakdown).	
Do not touch the thermal print head because it will be exposed when the cover is opened. <ul style="list-style-type: none"><li>• When replacing labels immediately after using the machine, be careful not to get burned due to overheating of the thermal print head.</li><li>• Do not touch the thermal print head as your hand oil may cause the deterioration.</li></ul>	





 <b>CAUTION</b>	
After using this machine or when not it for a long time, take out the battery pack and pull out the power plug of the charger adapter from the AC outlet for safety.	
Remove dusts regularly after pulling out the power plug of the charger adapter from the AC outlet. • If dusts are accumulated around the AC outlet, it may cause leak current and fire.	
Do not place this machine on an unstable place. • Doing so may fall and injury.	
Do not charge anything other than the specified battery pack (lithium-ion battery). • Follow the local regulation when disposal.	





## 2. For your longer use

### Precautions for use

1. Do not print the journal paper with the paper not installed.
2. Issue labels after confirming the print contents are correct, as set values of a built-in program might be changed or destroyed by an excessive power supply noise.
3. Avoid use of this machine under the conditions of extreme temperature or humidity.
4. Do not leave or keep the machine in the place where an air conditioner is installed near the machine or direct sunlight is received.

#### [Environment]

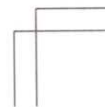
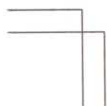
Operating environmental temperature:  
+5° ~ +35°C

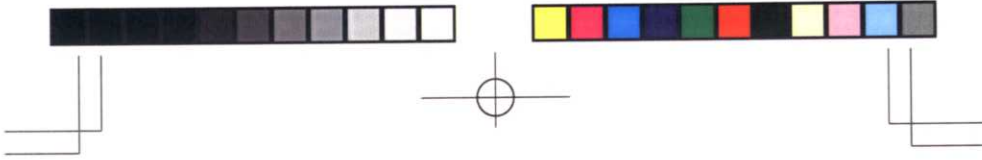
Operating environmental humidity:  
25 ~ 80%RH (No condensation)

Storage environmental temperature:  
-10° ~ +60°C

Storage environmental humidity:  
10 ~ 80%RH (No condensation)

5. When glue or dust adheres to the label path, wipe it off with a soft cloth wringed after being soaked in neutral detergent.






6. Use the battery pack after full charge when using it for the first time.
7. In the case of using this machine with the battery pack, turn off the power even when interrupt the use temporarily. This will save the battery pack power.
8. Clean the thermal print head regularly and perform test printing. Contact our dealer if a white line appears on the test pattern.

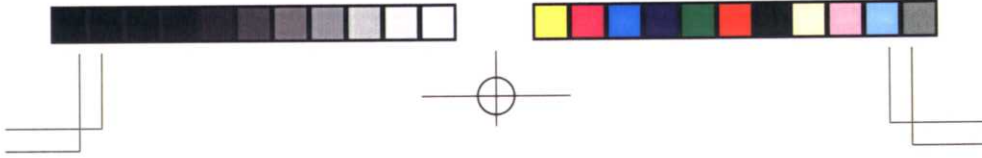
Normal pattern 

Abnormal pattern 

9. Inspection at the beginning of a working day  
Perform test printing at the beginning of a working day.  
Refer to Section 13 "Test Printing".

 <b>CAUTION</b>
Contact our dealer if an abnormal pattern should be printed.

10. Use our specified media to maintain good print quality and performance.



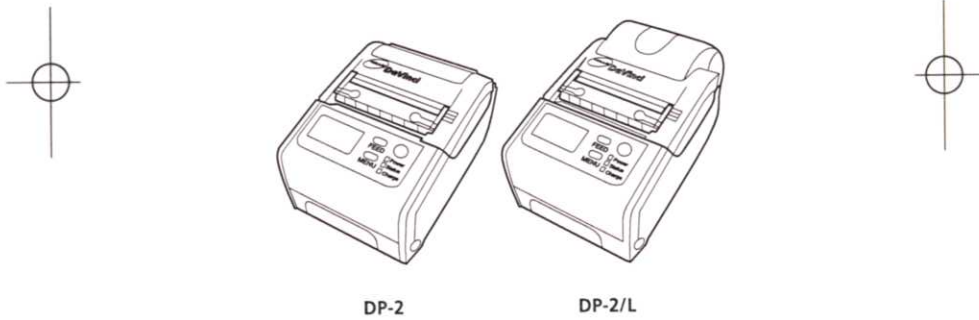
### **3. Confirmation of This Machine**

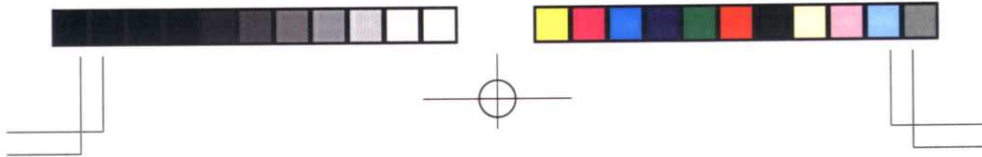
This machine is composed of the printer unit and accessories.

#### **3-1. Printer Unit**

You can select one of two types, either DP-2 that can contain the media roll with small diameter or DP-2/L that can contain the media roll with large diameter.

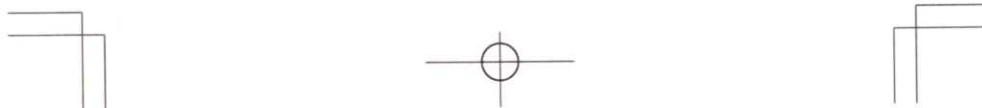
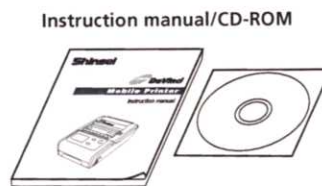
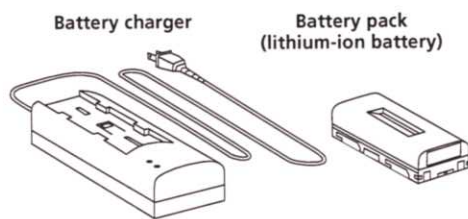
The following pages are described by using figures of the DP2.

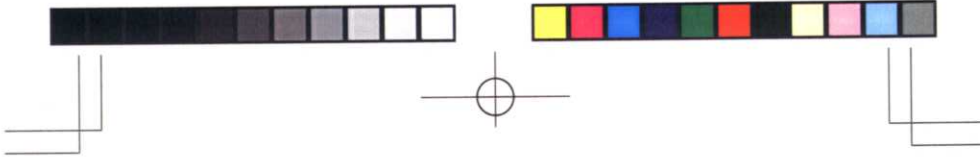




### 3-2. Accessories

They are attached to the printer unit.



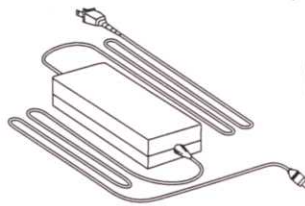


#### 4. Optional Accessories

Following optional accessories need to be purchased separately.

\* Contact our dealer for other optional accessories.

**Charger adapter**



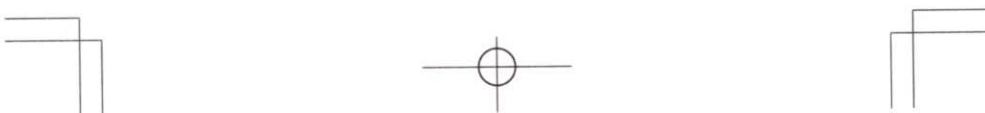
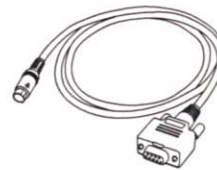
**Extra battery pack**  
(One pack is attached to this machine).

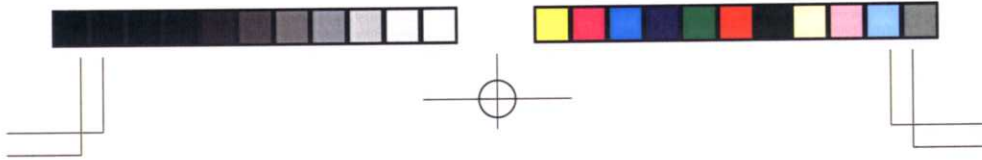


**Rainproof case**

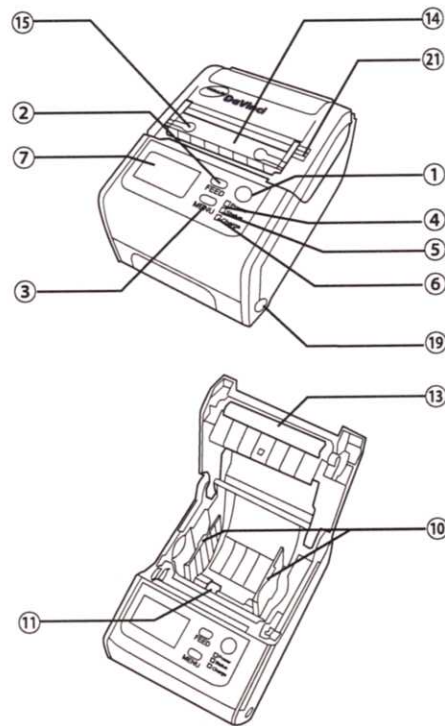


**Data transfer cable**

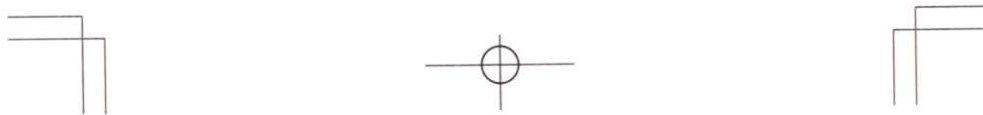
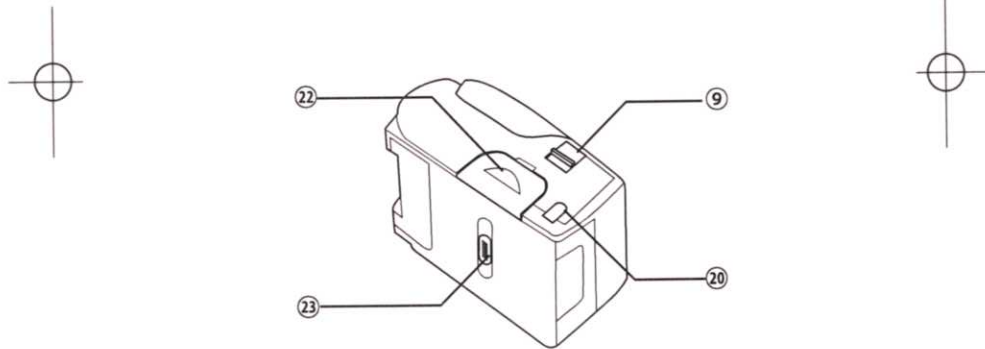
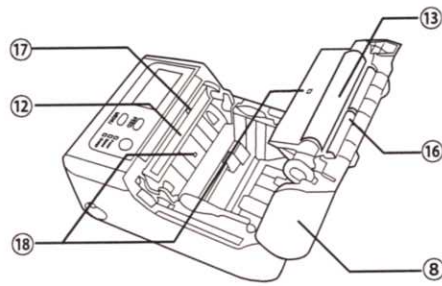
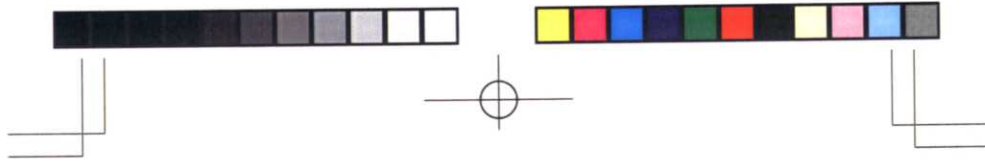


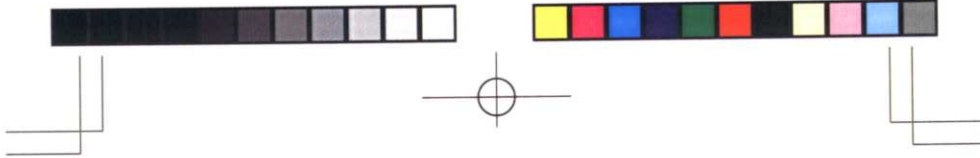


### 5. Names and Functions of Each Part

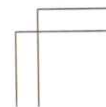
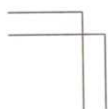


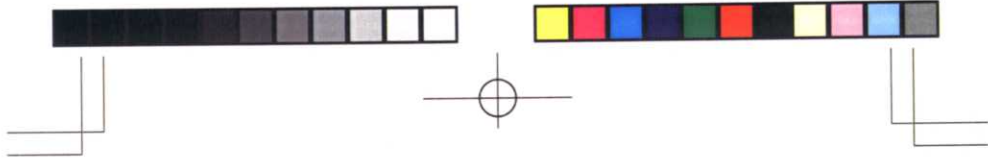




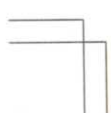


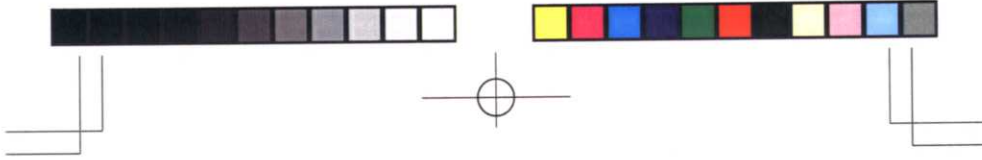
No.	Name	Function
②	FEED key	Press this key when feeding paper or moving the cursor on the menu screen.
③	MENU key	Press this key when changing the screen.
④	Power LED	The green LED lights up when the power supply is turned on.
⑤	Status LED	The red LED lights up if an error display appears.
⑥	Charge LED	This LED lights up while charging with the charger adapter (option).
⑦	Liquid crystal display	The remaining battery level and various statuses are displayed.
⑧	Cover	Open or close this cover when removing or installing the journal paper.
⑨	Cover lock release lever	Press to release the cover lock when opening the cover.
⑩	Label holder	This holder guides the media.
⑪	Stopper	This stopper keeps the label holder opened.
⑫	Thermal print head	This head performs printing on the media.
⑬	Platen roller	This roller holds the media with the thermal print head and transports the media.





No.	Name	Function
⑭	Peeling frame	This frame peels off labels from the backing paper.
⑮	Peel frame release lever	Open the peel off frame with this lever.
⑯	Peel roller	This roller guides the backing paper to the issuing slot.
⑰	Peel sensor	This sensor detects a peeled label presence.
⑱	Label sensor	This sensor detects a label transportation.
⑲	Connector cover for RS-232C	Open this cover to connect with the personal computer, etc.
⑳	DC input terminal cover	Connect the charger adapter (option).
㉑	Auto/Manual switch	Press to select "auto issue" or "manual issue" in the Peel-Off mode.
㉒	Battery pack cover	This covers the storage unit of the battery pack.
㉓	Battery pack release lever	Use this lever when taking out the battery pack.

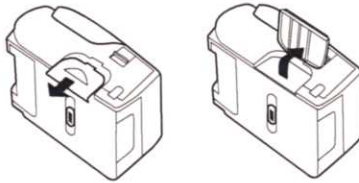




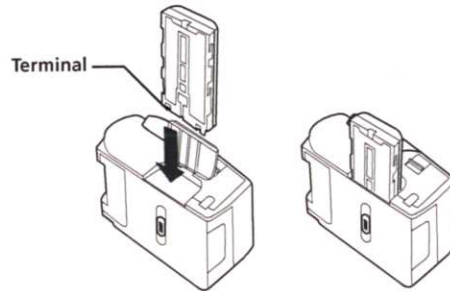
## 6. When using this machine with the battery pack

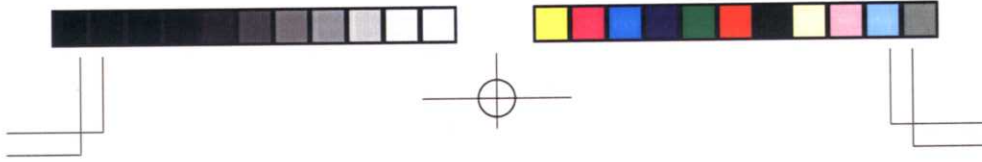
### 6-1. Installing the battery pack

- (1) Open the battery pack cover.
  - Slide the battery pack cover to the arrow direction.

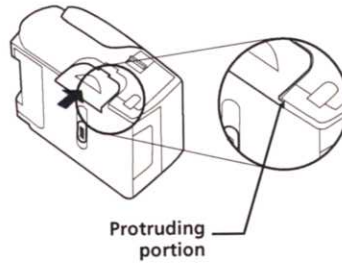


- (2) Insert the fully-charged battery pack into the battery pack storage unit of this machine with its terminals inside until it clicks.

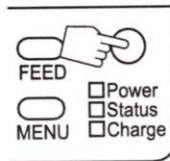


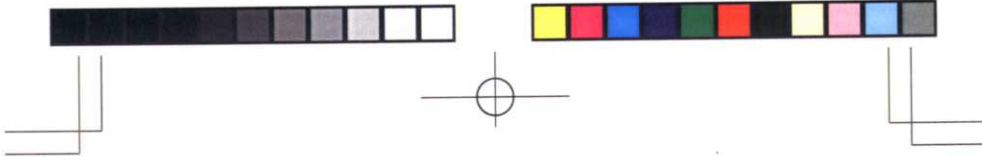


- (3) Close the battery pack cover.
- Push to slide the battery pack cover until it clicks so that the protruding portions on both sides of the battery pack cover can be inserted into the slit of this machine.



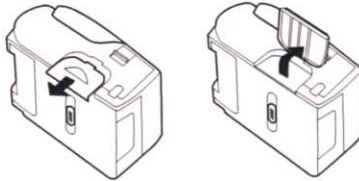
- (4) Turn on the power.  
The green Power LED lights up, and the power is turned on.



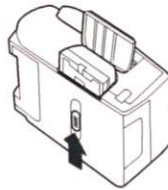


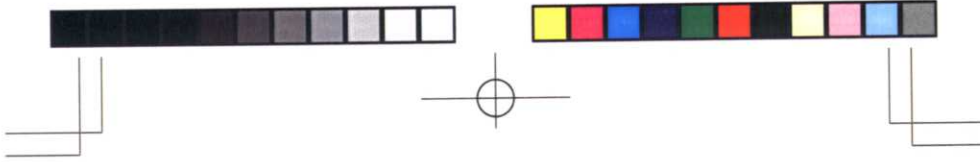
## 6-2. Removing the battery pack

- (1) Turn off the power supply.
  - Confirm that the Power LED is turned off.
- (2) Open the battery pack cover.
  - Pull to slide the battery pack cover in the arrow direction to release the lock, and open the cover.



- (3) Remove the battery pack.
  - Slide the battery pack release lever in the arrow direction until the lock is released.

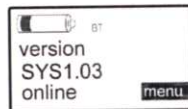




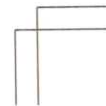
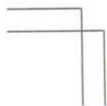
## **7. Charging the battery pack**

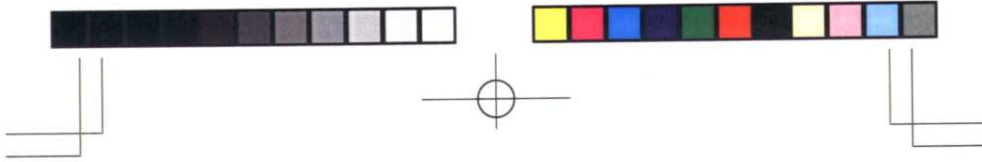
### **7-1. Battery charge is needed in one of the following cases**

- (1) When using the battery pack for the first time, or not using it for a long time.
- (2) When nothing appears on the liquid crystal display at the time of power-on, or when the display turned off soon though the remaining battery level had been displayed once.
- (3) When the remaining battery level becomes 1/4 or less.



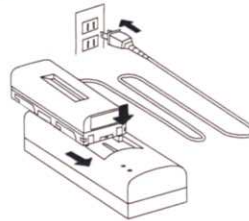
- (4) When the display turned off while each item was being input.
- (5) When operation stopped while printing and the "low battery" message is displayed.





## 7-2. Battery charging procedure

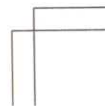
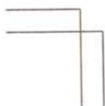
- (1) Insert the output side of the power cable into the input side of the battery charger and insert the cable plug into the AC outlet.
  - The Power LED (red) lights up.
- (2) Insert the battery pack and slide it in the arrow direction to lock the pack until it clicks.
  - The Charge LED (red) lights up when the charge starts.
  - The Charge LED (red) turns off when the battery is fully charged.



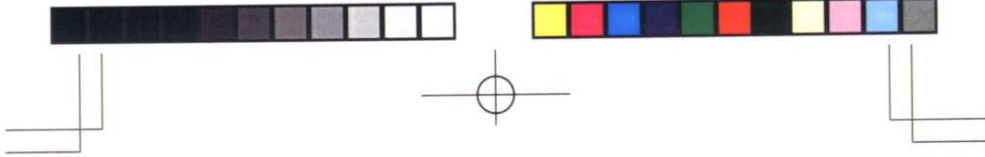
<b>⚠ CAUTION</b>
If the Charge LED blinks, stop charging because the battery pack trouble is presumed.

- (3) Remove the battery pack when the charge ends.
  - Charge time: 3 hours
  - Number of charge times: 300 times

\* Use the charge time and the number only as a guide. They may vary according to status of use.







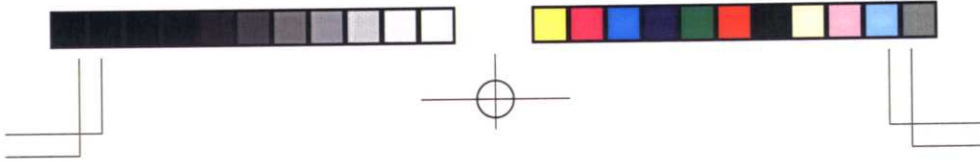
**⚠ WARNING**

- Do not disassemble or modify the battery pack. Doing so may cause a damage, short-circuit, or ignition, and may result in an electric shock, burn, or fire.
- Do not allow the machine to come in contact with water or get accumulation of dusts. Doing so may result in a fire or cause the machine to break down.
- Do not keep the battery pack with metals. Doing so may cause a fire or electric shock due to short-circuit.

**⚠ CAUTION**

- Do not leave the battery pack charged for a long time.
- After the charge, make sure to pull out the plug of the power supply cord of the battery charger or the main body charger from the AC outlet.
- The operation time may become less because the battery pack is naturally discharged and the power decreases. (It is not a breakdown).
- Do not charge the battery pack when the pack is still high in temperature.
- Charge the battery pack after the temperature drops.
- Caution should be exercised because the battery pack is still high in temperature immediately after the charge.





### 7-3. Before using the battery pack

(1) About the battery pack

Note that the deterioration speed (life time) of the battery pack depends greatly on overcharge and over-discharge.

- **Notes not to cause overcharge**

Do not charge the battery pack many times in a short period of time without discharging electricity.

- **Notes not to cause over-discharge**

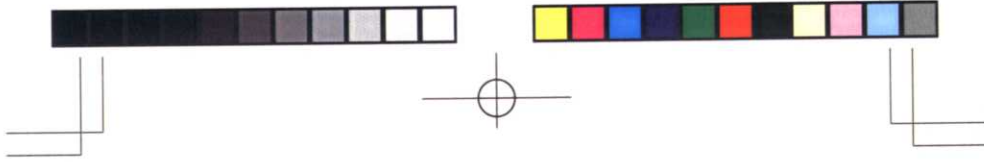
Charge the battery pack promptly when the warning appears on the display indicating that the remaining battery level is low. There is a possibility that the battery pack is in the over-discharge state when the pack has been connected with the machine over an extended time period (The pack is discharged even in the power-off state), or when the pack has been left for a long time.

- **Optimizing the charge**

It is the best to charge the battery pack when the remaining battery level becomes 1/4 or less for prolonging the battery life.


**CAUTION**

If the lithium-ion battery is over-discharged, it cannot be normally charged.



(2) Others

- The battery pack might be high in temperature shortly after a large amount of printing has been made with this machine.

 <b>CAUTION</b>
Charge the battery pack after the temperature falls.

- The lithium-ion battery capacity remarkably decreases under the low-temperature environment. Early charging is recommended.
- Replace with a new battery pack when the pack cannot be fully charged or the operating time decreases.

