



3. Getting Started

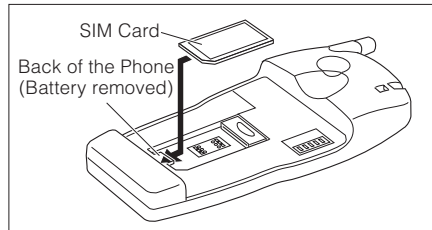
3. Getting Started

SIM Card

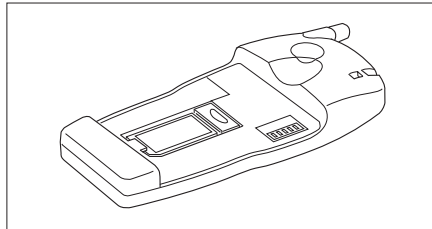
Your small-sized SIM (Subscriber Identity Module) card will be provided by your service provider. It contains your phone number and billing details. So please protect it and keep it in a secure place.

Inserting the SIM Card

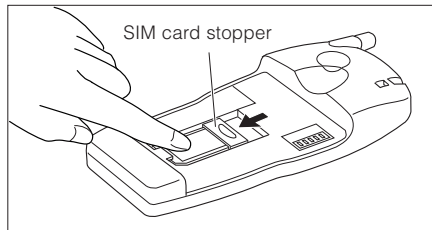
- 1 Insert the bevelled end of the SIM card into the SIM card socket. Make sure the metal contact faces down when you insert it.



- 2 Push the SIM card completely into the socket.



- 3 While holding down the SIM card, slide the metal SIM card stopper to securely fasten the SIM card in place as shown below.



Removal

Remove the SIM card by reversing the insertion procedure.





3. Getting Started

NOTES:

- *Before inserting or removing your SIM card, make sure to turn off your phone.*
- *Be careful in handling, inserting, and removing your SIM card. The SIM card and its contacts will easily be damaged by scratches or bending.*
- *Network operators offer various types of services and SIM cards. So depending on the type of your SIM card, some features mentioned in this manual may not be available or may not be operated in the way mentioned.*
- *If your phone is used without the SIM card, "Insert SIM card" will be displayed.*
- *Emergency calls can be placed without the SIM card.*
- *Keep your SIM card out of the reach of small children.*





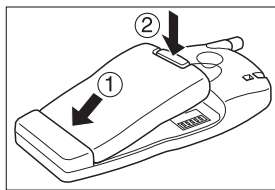
3. Getting Started

Battery Operation

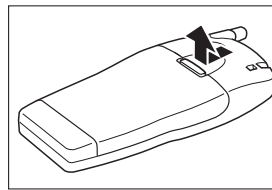
Be sure that your battery is fully charged before using your phone for the first time. Your phone will not operate without a charged battery.

Battery Insertion/Removal

Battery Insertion



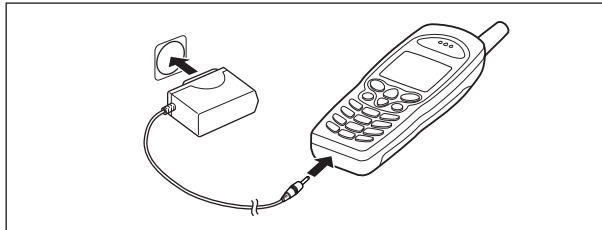
Battery Removal



NOTE:

- Make sure that your SIM card is correctly inserted into your phone before battery insertion.


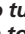
Battery Charging



An animation will be displayed and the battery level indicator will start scroll while your battery is charging. When the battery is fully charged, battery level indicator stops scrolling.

After the battery is fully charged, disconnect the charger from the phone.

NOTES:

- The standard battery will be fully charged in about 3 hours. However, actual charging time varies with battery conditions.
- To place or receive calls during charging, press and hold  to turn your phone on. After calls, press and hold  again to turn your phone off.
- Depending on the condition of the battery, the animation may not be output to the display for several minutes after the battery starts to recharge, but this is not a malfunction.
- Attach the adapter with the battery in the installed state.





CAUTIONS:

- Use only the supplied adaptor. Using other adaptors can damage the battery and/or your phone.
- Do not discard the battery into fire.
- To prevent injury or burns, do not allow metal objects to contact or short circuit the battery terminals.
- Do not use any batteries or chargers other than those specifically designed for use with this phone.
- Charge the battery indoors with the ambient temperature between 5°C and 40°C.
- Do not charge the battery in direct sunlight, or in high humidity places like a bathroom.
- To avoid shortening the battery life, do not recharge or “top-off” the battery pack by charging for short periods of time. It is recommended that the battery be charged after it is discharged completely.
- The product that you have purchased contains a rechargeable battery. The battery is recyclable. At the end of its useful life, under various local laws, it may be illegal to dispose of this battery into the municipal waste stream. Check with your local solid waste officials for details in your area for recycling options or proper disposal.





4. Basic Operation

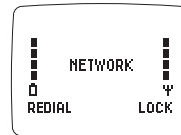
4. Basic Operation



Turning Your Phone On and Off

Turning Your Phone On

Press and hold to turn on your phone. When your phone is in a service area, the network name will be displayed.



(standby mode)

Turning Your Phone Off

To turn off your phone, press and hold again. An animation will be displayed before the actual power-off.

Selecting a Mode

Confirm the mode of your telephone before making a call.

- 1 Press , 7, 3, 3.
- 2 Select the mode of your choice from **GSM/PCS**, **GSM only**, and **PCS only** then press .



Placing Calls

- 1 Enter a phone number.
- 2 Press .
- 3 To end your call, press .

NOTE:

- When "No service" is displayed, you cannot place calls.

Correcting the entered digits

- Press to erase the last digit entered.
- Press and hold to erase the whole number.

Adjusting the Earpiece Volume

You can adjust the earpiece volume of the phone during a call. Press to increase and to decrease the volume level.

