

Addendum AXIOM Artis

Wireless Footswitch Artis

Important information

The Wireless Footswitch has the same functions as the standard footswitch without being connected by cable. The functions are activated via an RF transmitter.

The immanent advantages are easier cleaning and no tripping over cables.

The Wireless Footswitch shall be operated in close vicinity to the patient table only and with full visibility to the patient on the table.



Caution

Unnecessary Dose

hm_um_CautionDontXrayIfNotInVis
ibility

X-ray release may be possible from remote locations

- ◆ Do not release X-ray mistakenly if not in viewing distance to the patient and close to an emergency button

The batteries shall always be sufficiently charged.



Caution

Discontinuation of interventional treatment

hm_um_MobileDockingStation

Batteries of Wireless Footswitch may be flat

- ◆ Make sure the batteries are charged prior to starting an examination.
- ◆ In case of empty batteries use Charging Station to continue treatment.

The Wireless Footswitch can interfere with life supporting devices.



Caution

Footswitch too close to a life supporting device

hm_um_WirelessFSWSepDist

Interference with life supporting device and possible malfunctioning

- ◆ Make sure to keep a separation distance of > 7 cm between the Wireless Footswitch and a life supporting device
-

Changes or modifications not expressly approved by the party responsible for compliance could void the user's authority to operate the equipment.

The Wireless Footswitch may be interfered with by other equipment, including portable and mobile RF communication equipment, even if such equipment meets the applicable emissions requirements.

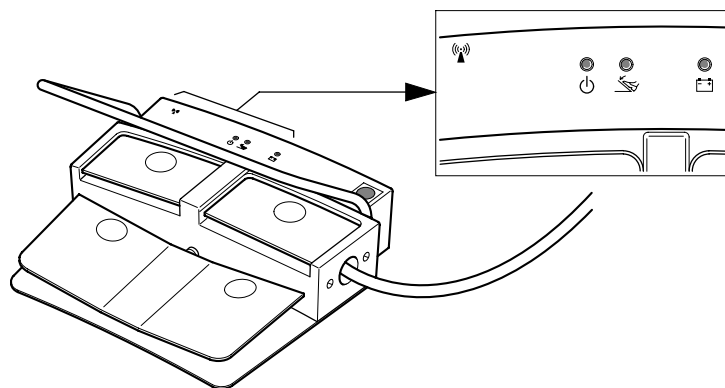
The Wireless Footswitch must emit electromagnetic energy in order to perform its intended function. Nearby electronic equipment may be affected.

Operation

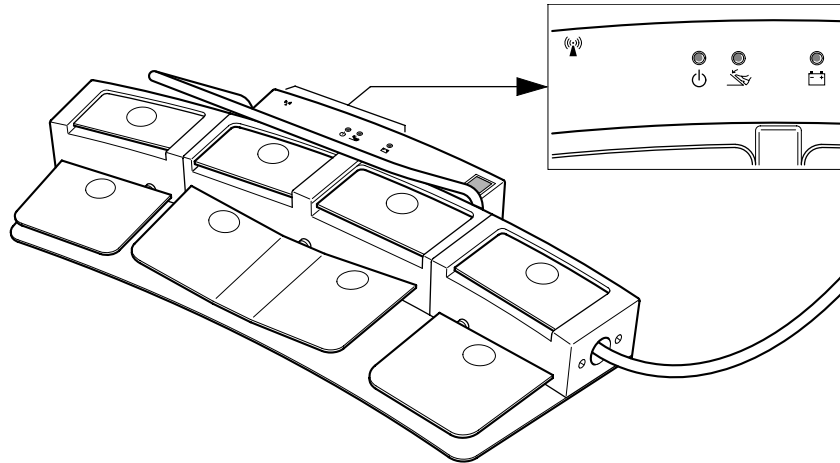
Footswitches

There are two monoplane versions with 4 pedal functions and a biplane version with 8 pedal functions. The functions of the pedals can be configured by Siemens Service to your preference. Please see the suggested assignment in the Operator Manual Artis.

The Wireless Footswitches are marked with a colored sign of different shape to avoid a mix up for installations with a multitude of Wireless Footswitches. The same marks are attached to the respective table and room during installation.



Monoplane Wireless Footswitch (example)



Biplane Wireless Footswitch

The footswitch is active in a range of appr. 5 m around the table/stand, where the receiver is mounted. If the footswitch is in a wider range of the table, it may lose contact with the receiver and will then turn into an inactive mode.

There are 3 LEDs showing the status of the footswitch.



LED on: Footswitch is on and is in active mode.

LED off: Footswitch is inactive.

- It is too far away from the table
- The Artis system is switched off
- The batteries are completely discharged
- The Footswitch is in "sleep mode". Press a pedal swiftly to activate it again.



LED on: Any footswitch pedal is being pressed.



LED off: battery sufficiently charged, footswitch not connected to the Charging Station,

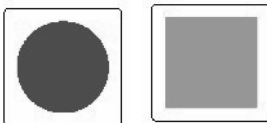
LED flashing yellow: battery needs charging, remaining capacity < 4h.

LED on yellow: footswitch connected to Charging Station and batteries are being charged.

LED on green: footswitch connected to Charging Station and batteries are fully charged.



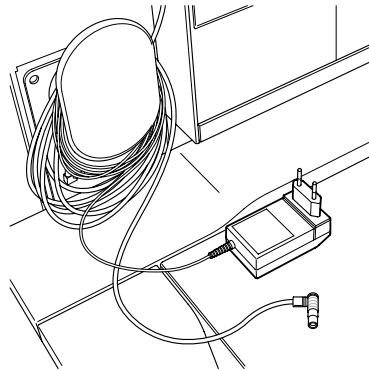
This symbol marks an RF transmitting component.



Two examples of colored signs of different shape to mark the footswitch to an Artis system.

Charging Station

The Charging Station is connected to the Wireless Footswitch for charging the batteries. It is recommended to connect the Charging Station after deployment each day.



Charging Station

If the Wireless Footswitch needs charging during a patient procedure, simply connect it to the Charging Station. The cable length of 7 m allows charging during the procedure.



Never use another charging device than the Charging Station delivered with the Wireless Footswitch.

Usage of another charging device may cause severe damage to the Wireless Footswitch or may lead to hazards for the patients when the Wireless Footswitch is recharged during operation.

Exchange of batteries

The batteries of the Wireless Footswitch must be exchanged once a year by authorized and trained staff. Please call Siemens Service. Unauthorized exchange may cause severe damage.

Technical Data

Active range	Approximately 5 m around the receiver mounted to the table/stand.
Charging time	Approx. 6 h
Operating time with full batteries	Approx. 60 h
Frequency range	2402 MHz - 2480 MHz
Modulation	GFSK
RF Power	0 dBm
RF emissions CISPR 11	Compliance: Group 2