



Verizon Wireless High Speed Wireless Data Trial

Sierra Wireless AirCard 575 Set Up
Instructions

V1.2a



Contents

SECTION 1: PC PREPARATION 3

1.1 PC PREPARATION 3

 1.1.1 Device..... 3

 1.1.2 Operating System 3

 1.1.3 Memory..... 3

 1.1.4 Disk Space..... 3

 1.1.5 Other..... 3

1.2 SOFTWARE PREPARATION 3

SECTION 2: SETUP 3

2.1 WIRELESS DEVICE SETUP 3

 2.1.1 *Installing the AirCard 575 Wireless Network Card & Drivers* 3

SECTION 3: CONNECT..... 11

3.1 CONNECT TO WIRELESS NETWORK USING 1xEVDO (WIRELESS HIGH SPEED DATA) 11

3.2 CONNECT TO WIRELESS NETWORK USING CDMA 1xRTT (EXPRESS NETWORK) 13

 3.2.1 *1xRTT Account Activation and Configuration*..... 13

 3.2.2 *1xRTT Wireless Connection*..... 14

3.3 VERIFY CONNECTIVITY 15

 3.3.1 *Access a website via your browser*..... 15

 3.3.2 *Ping an Internet address*..... 15

 3.4 *Disconnect from Wireless Network* 16

APPENDICES 17

APPENDIX A: TECHNICAL SPECIFICATIONS..... 17

APPENDIX B: REGULATORY INFORMATION 18



Section 1: PC Preparation

1.1 PC Preparation

1.1.1 Device

Only PCs or Laptops will be supported during the trial.

1.1.2 Operating System

You must have Windows 2000.

1.1.3 Memory

You must have a minimum of 128 MB or the recommended 256 MB RAM

1.1.4 Disk Space

You must have at least 10 MB disk space on your hard drive.

1.1.5 Other

You must have one available PCMCIA Card Slot

1.2 Software Preparation

If you are an enterprise user, please check with your Information Technology (IT) department regarding obtaining and installing other software such as VPN clients.

It is required that the user installing the software have administrator rights to the computer. Please logon to your computer using an account that has administrator rights (e.g., administrator) before attempting to install software on your computer.

Section 2: Setup

2.1 Wireless Device Setup

2.1.1 Installing the AirCard 575 Wireless Network Card & Drivers

Do not insert the AirCard 575 Wireless Card into the PCMCIA slot of your notebook computer until you are asked to.

1. Gather the following items:
 - a. Sierra Wireless AirCard 575

b. Sierra Wireless AirCard 575 Installation & Software CD

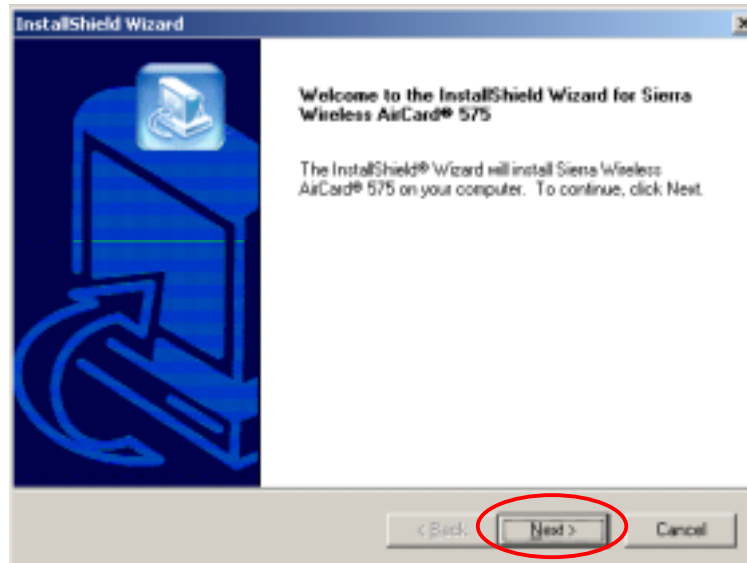
2. Insert the AirCard 575 CD in your CD drive. A program will auto-run displaying a menu as shown below.
 - ➔ If the menu program does not auto-run, click on the Windows Start Menu, then click **Run**. In the box next to **Open**, type in “d:\launch” (where d: is the drive letter of your CD-ROM drive). Click **OK** when complete.



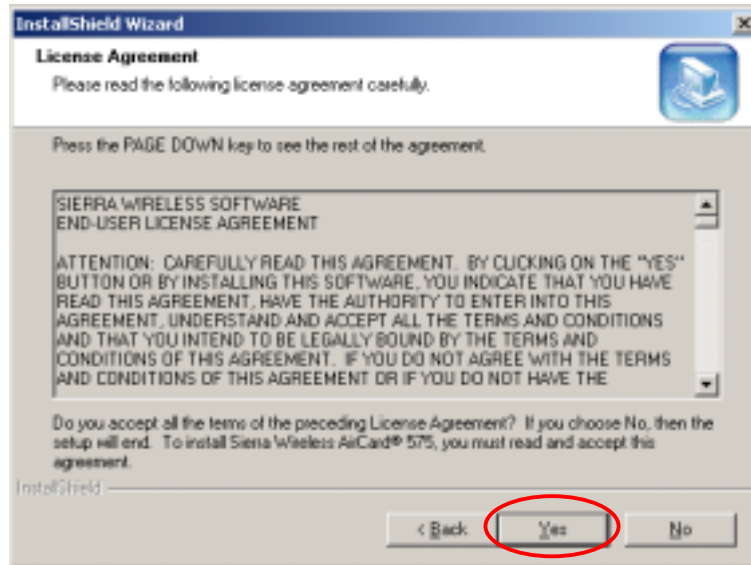
3. From the AirCard 575 Wireless Network Card Menu, click on “**notebook installation.**” A screen will appear warning you to install the Sierra Wireless software before inserting the AirCard. Click on “**notebook software installation.**” This will launch the InstallShield Wizard and begin the installation of the AirCard 575 software.



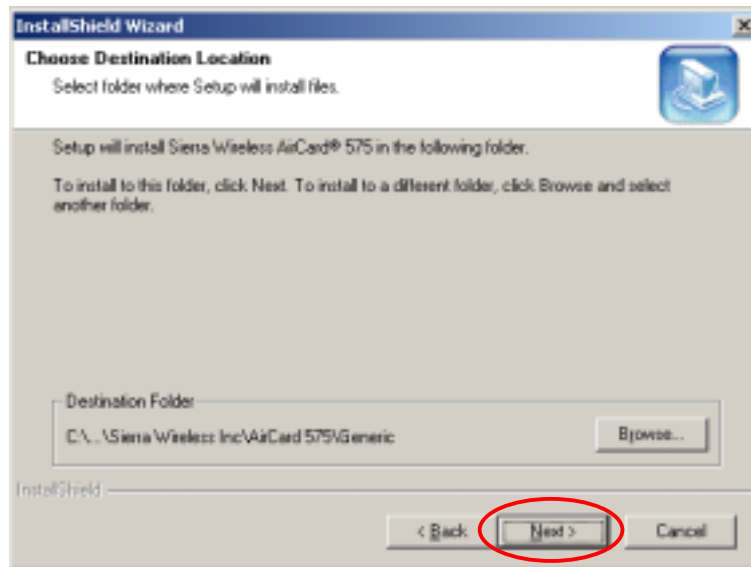
4. From the InstallShield Wizard window, click **Next** to continue.



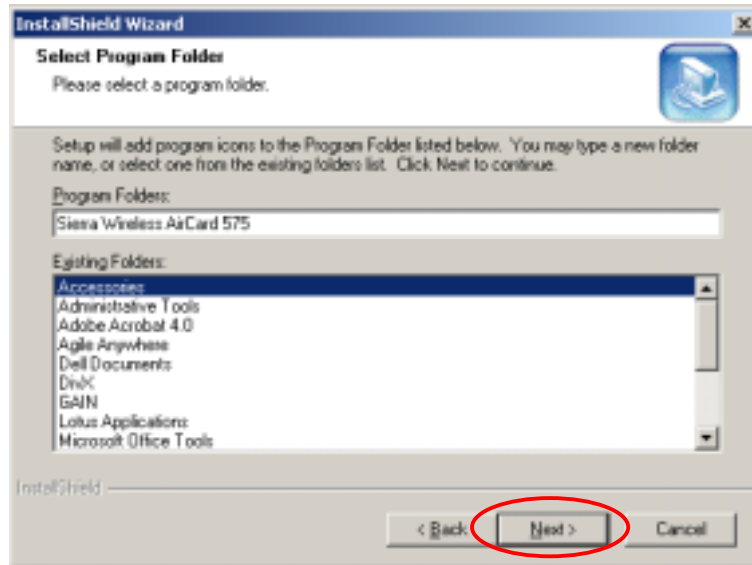
5. From the License Agreement window, click **Yes** to continue.



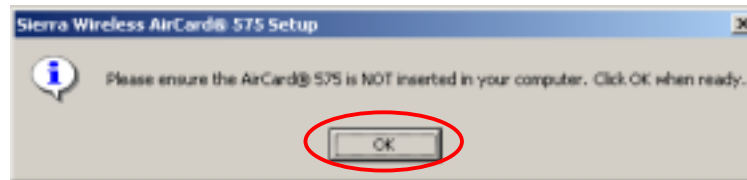
6. From the Choose Destination Location window, click **Next**.



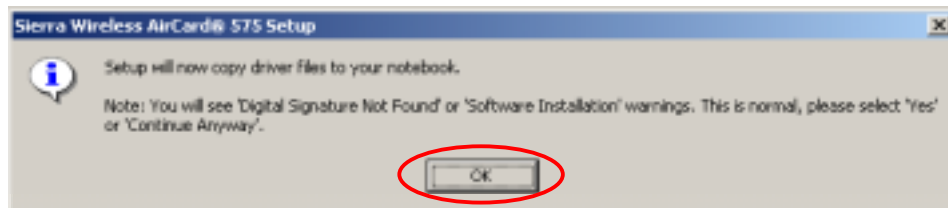
7. From the Select Program Folder window, click **Next**. The setup program will copy files to your notebook computer.



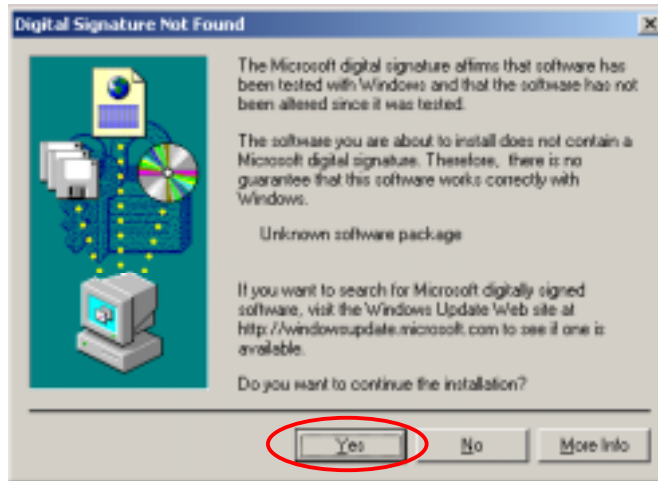
8. A window will appear informing you NOT to insert the AirCard 575 into your computer. Click **OK** to continue.



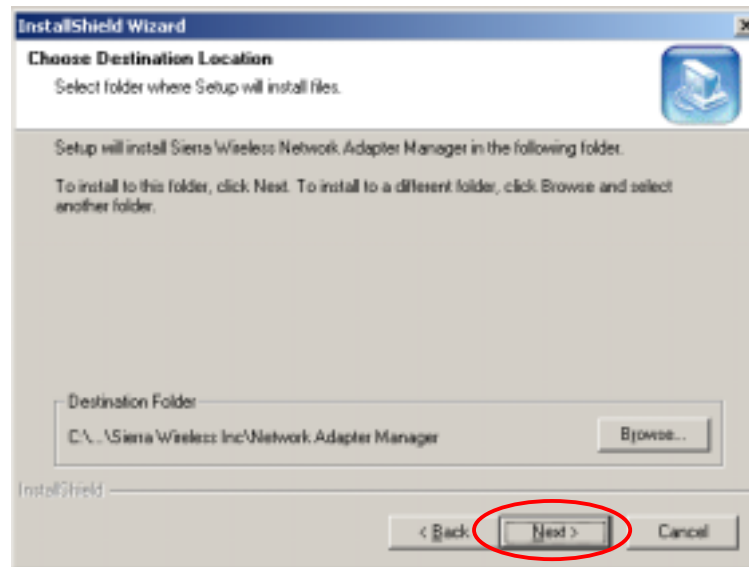
9. A window will appear indicating that Setup will now copy driver files to your notebook. Click **OK** to continue.



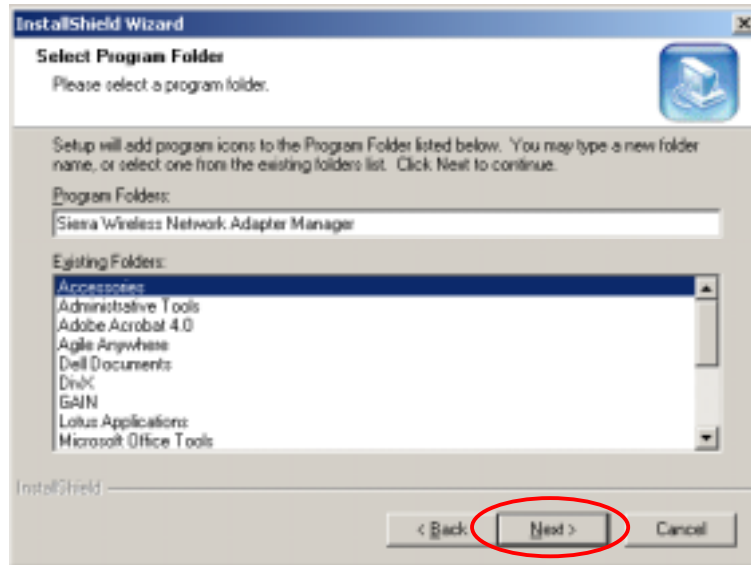
10. A series of **Digital Signature Not Found** windows will appear, click **Yes** at each appearance.



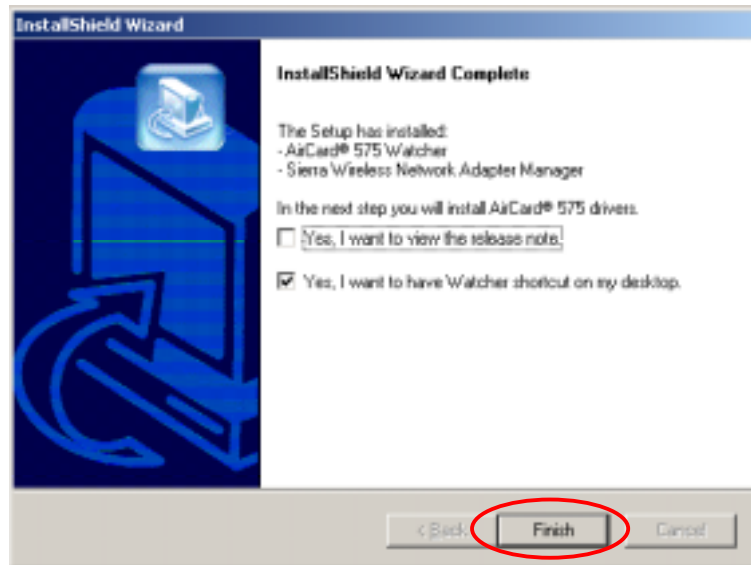
11. From the Choose Destination Location window, click **Next** to continue.



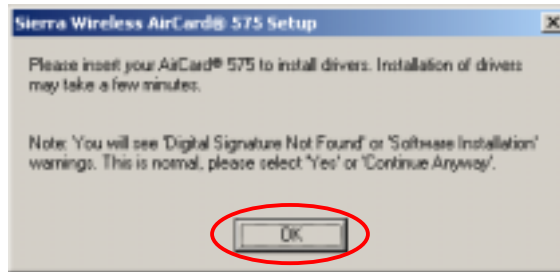
12. From the Select Program Folder window, click **Next** to continue.



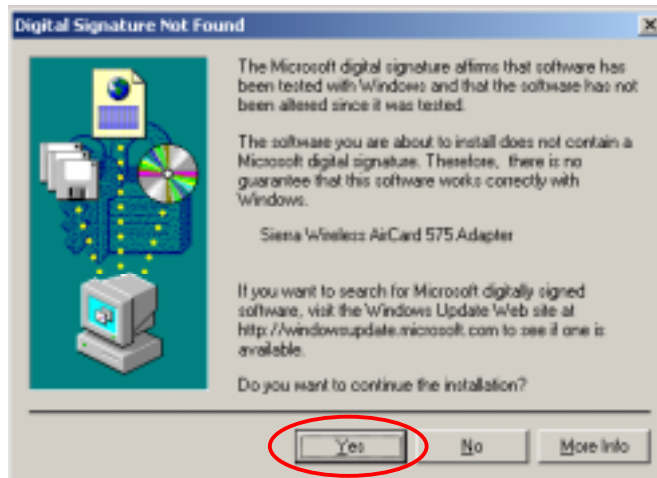
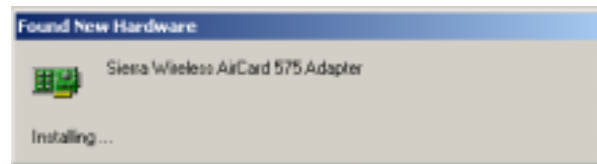
13. From the InstallShield Wizard Complete window, click **Finish**.



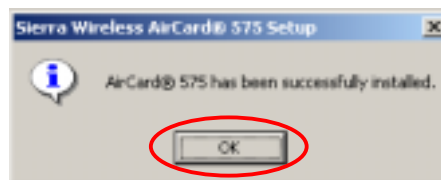
14. A window will appear prompting you to insert your AirCard 575. Insert the AirCard 575 into an empty PCMCIA slot in your notebook computer. Click **OK** when complete.



15. The Found New Hardware Wizard will begin the installation of the AirCard 575 drivers. A series of **Digital Signature Not Found** windows will appear, click **Yes** at each appearance.



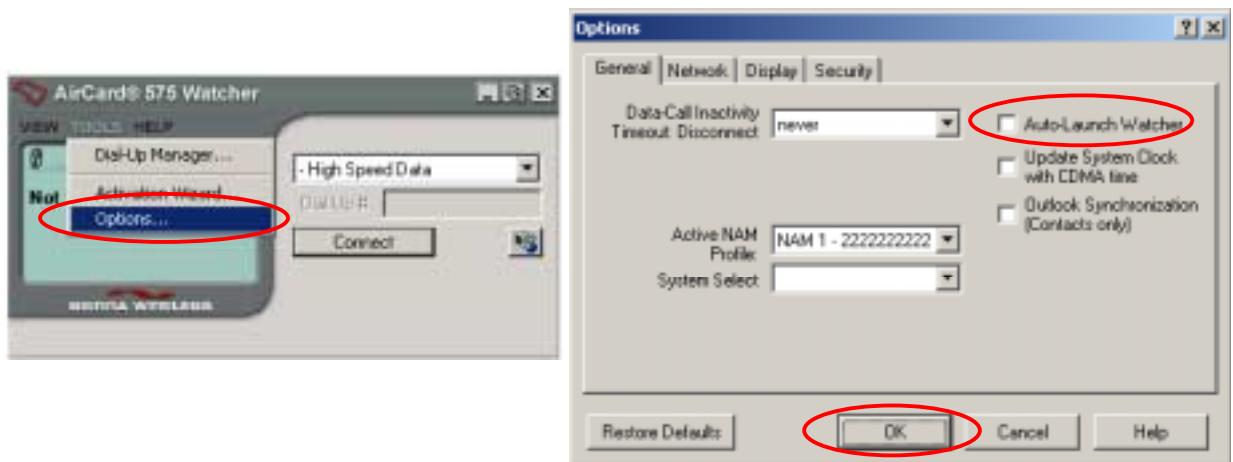
16. A window will appear indicating the AirCard 575 has been successfully installed. This completes the installation of the AirCard 575 drivers. Click **OK**.



17. The AirCard 575 setup program will completed and launch the AirCard 575 Watcher window. This completes the installation of the Sierra Wireless AirCard 575 Drivers and Software.



18. Congratulations! You have completed the installation and verification of the Sierra Wireless AirCard 575 drivers. Please remove the AirCard 575 CD from your CD-ROM drive.
19. **OPTIONAL:** The AirCard 575 Watcher, by default, automatically launches during Windows startup and whenever the card is inserted into the notebook. To turn the option off: From the AirCard 575 menu, click on **Tools**, then select **Options**. From the Options window, uncheck the box next to "Auto-Launch Watcher." Click **OK** once complete.



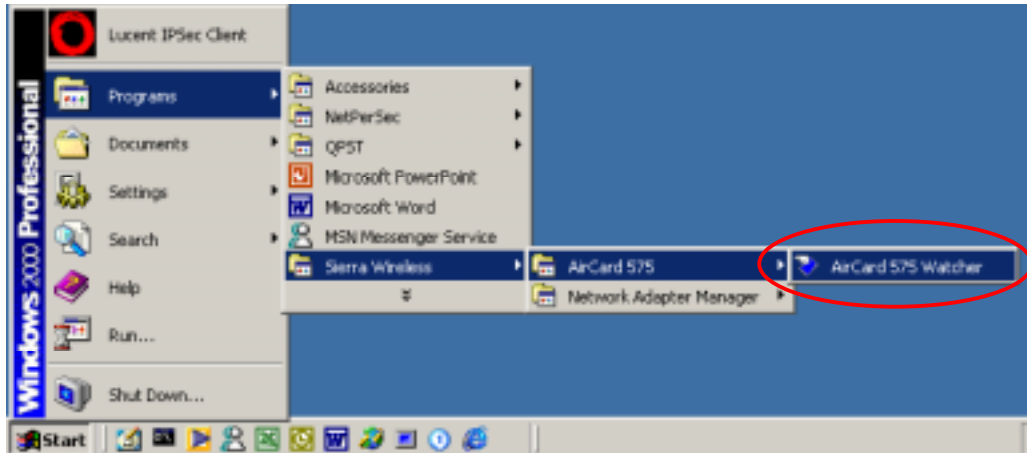
Section 3: Connect

3.1 Connect to Wireless Network using 1xEVDO (Wireless High Speed Data)

NOTE: Before connecting to the 1xEV-DO wireless network, be sure that you are in the coverage area.

1. If the AirCard Watcher program is not already open, double-click on the AirCard 575 icon on your Desktop. You may also open Watcher by clicking on Start → Programs → Sierra Wireless → AirCard 575 → AirCard 575 Watcher. See below.





- From the AirCard 575 Watcher window, select **High Speed Data** from the pull-down menu. Before clicking on the Connect button, ensure that the Watcher display window shows **“Ready to Connect”** and **EV**. The **EV** icon indicates that 1xEV-DO service availability. If the Watcher displays, **“Not in service,”** you will have to move to a location where there is Coverage. Once the display shows **“Ready to Connect,”** click on the **Connect** button



- Watcher will connect to the wireless network and authenticate your login credentials. The **EV** icon indicates that a 1xEV-DO data call is in progress. Once connected, the Watcher will display the connection time, Rx (Receive Data) and Tx (Transmit Data). This confirms that a connection to the 1xEV-DO wireless network has been established.

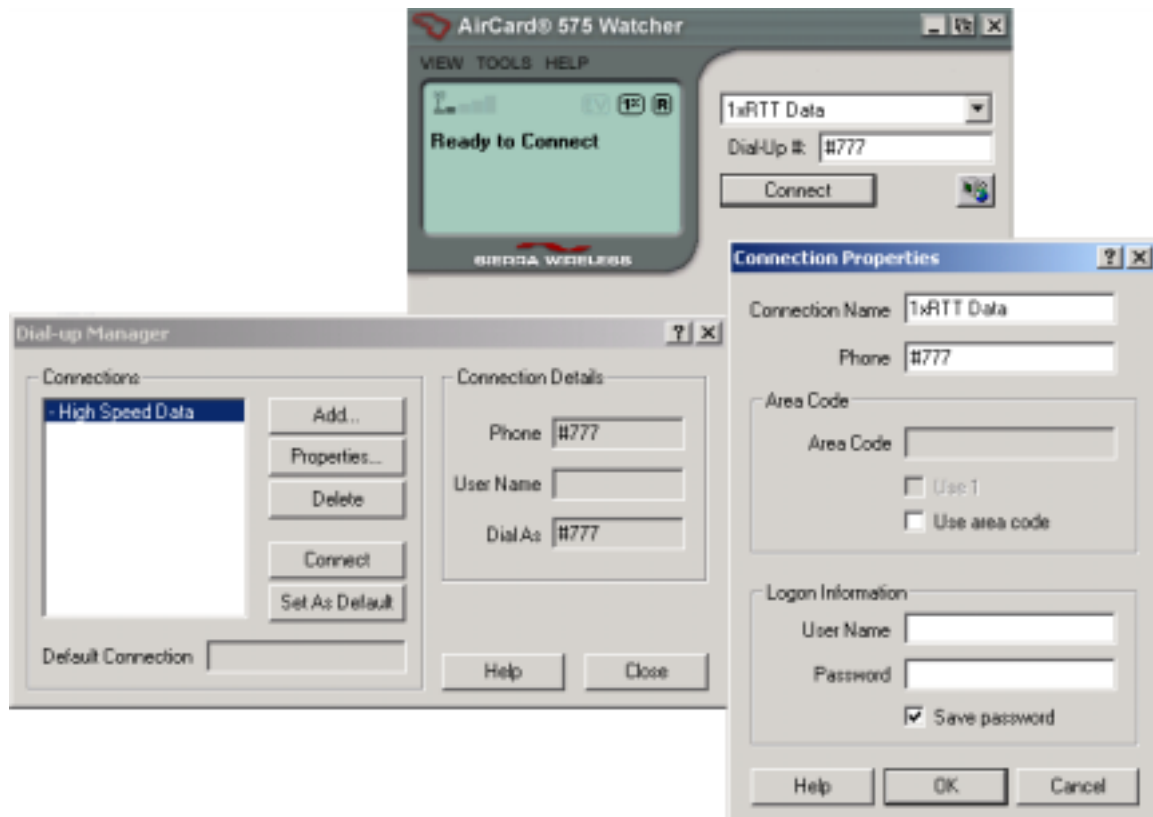




3.2 Connect to Wireless Network using CDMA 1xRTT (Express Network)

3.2.1 1xRTT Account Activation and Configuration

- 1) If the AirCard is not already inserted into a PC card slot, insert it.
- 2) Launch Watcher. If Watcher does not auto-launch, select Start>Programs>Sierra Wireless>AirCard 575>Watcher for AirCard 575.
- 3) In Watcher Go to **Tools**
- 4) Select **Dial Up Manager**
- 5) Select **Add...**
- 6) Enter the following information in **Connection Properties**:
 - **Connection Name** 1xRTT Data
 - **Number** *Provided by Verizon Wireless*
 - **User name** *Provided by Verizon Wireless*
 - **Password** *Provided by Verizon Wireless*
 - Check **Save password**



3.2.2 1xRTT Wireless Connection

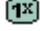

To establish a 1xRTT data connection:

- 1) From the main Watcher window, select **1xRTT Data** from the drop-down list.



- 2) Click Connect. The status of the connection is displayed in the main Watcher window. Watcher will display "Dialing -1xRTT Data" and "Authenticating 1xRTT Data" before displaying a data connection has been established.



When a data connection has been established you will see an  icon indicating 1xRTT service availability, and  icon indicating that a 1xRTT data call is in progress. The following sample window shows 1xRTT service availability and that a 1xRTT data call is in progress.



Once connected, you can use your network and communications applications.

3.3 Verify Connectivity

3.3.1 Access a website via your browser

Access a web site that you have not accessed recently. Recently accessed websites may be stored in cache.

3.3.2 Ping an Internet address

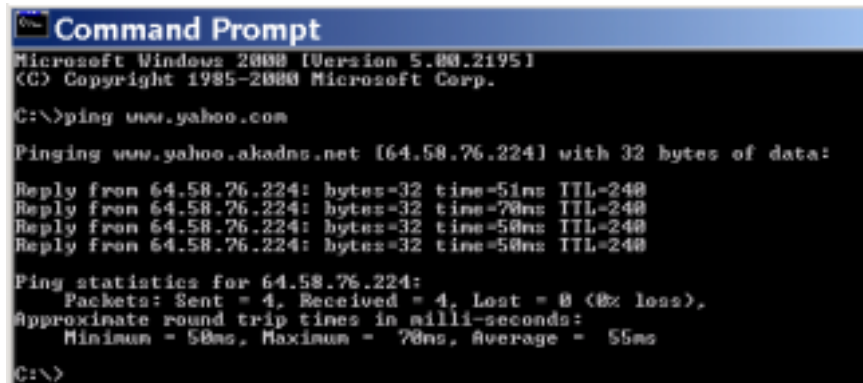
- Go to Start>Programs>Accessories
- Click on "Command Prompt"
- Screen below will be displayed



```
Microsoft Windows 2000 [Version 5.00.2195]
(C) Copyright 1985-2000 Microsoft Corp.
C:\>
```

- At C prompt enter ping (space) and an Internet name such as www.msn.com or www.yahoo.com

Screen below displays example of reply if connected to Internet



```
Microsoft Windows 2000 [Version 5.00.2195]
(C) Copyright 1985-2000 Microsoft Corp.
C:\>ping www.yahoo.com
Pinging www.yahoo.akadns.net [64.58.76.224] with 32 bytes of data:
Reply from 64.58.76.224: bytes=32 time=51ms TTL=240
Reply from 64.58.76.224: bytes=32 time=70ms TTL=240
Reply from 64.58.76.224: bytes=32 time=50ms TTL=240
Reply from 64.58.76.224: bytes=32 time=50ms TTL=240
Ping statistics for 64.58.76.224:
    Packets: Sent = 4, Received = 4, Lost = 0 (0% loss),
    Approximate round trip times in milli-seconds:
        Minimum = 50ms, Maximum = 70ms, Average = 55ms
C:\>
```

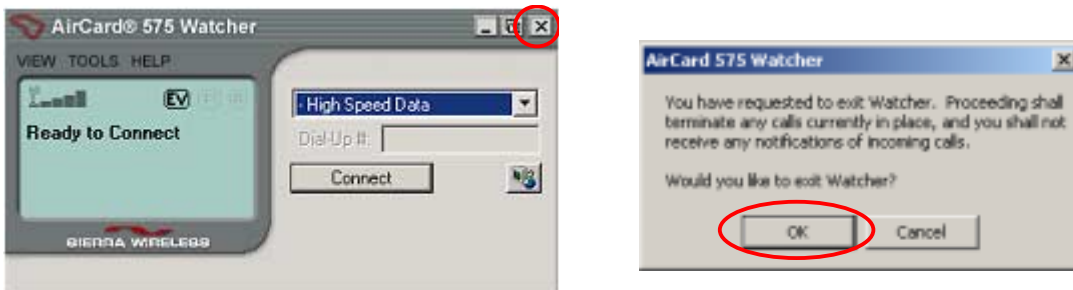
3.4 Disconnect from Wireless Network

This section should only be followed if you intend to disconnect from the wireless network. If you do not wish to disconnect from the wireless network at this time, skip this section.

1. To disconnect from the 1xEV-DO wireless network, click Disconnect from the AirCard 575 Watcher window. Once disconnected, the Watcher will display, "Ready to Connect."



2. To Exit from Watcher, click on the X (top-right of Watcher window). A window will appear asking if you would like to exit Watcher. Click **OK** to exit Watcher.





APPENDICES

APPENDIX A: Technical Specifications

This chapter provides technical product data for the AirCard 575 wireless network card.

Radio Frequency and Electrical Specifications

Approvals	FCC
Voltage	+5 Vdc from PCMCIA Slot
Current	Maximum:800 mA Typical: 200 mA
Transmitter Power	200 mW (+23 dBm)
Transmit	PCS: 1850 to 1910 MHz Cellular: 824 to 849 MHz
Receive	PCS: 1930 to 1990 MHz Cellular: 869 to 894 MHz
Channel Spacing	1.25 MHz
Freq. Stability	± 150 Hz

Environmental Specifications

Operating Temp.	0 to +60 °C (ambient, outside PCMCIA enclosure)
Storage Temp.	0 to +85 °C
Humidity	95%, non-condensing
Vibration	15 g peak 10 to 2000 Hz (non-operating)
Drop	30" (76.2 cm) on to vinyl covered concrete



APPENDIX B: Regulatory Information

FCC ID: N7NAC575

Where appropriate, the use of the equipment is subject to the following conditions:

CAUTION Unauthorized modifications or changes not expressly approved by Sierra Wireless, Inc. could void compliance with regulatory rules, and thereby your authority to use this equipment.

CAUTION This device has been tested for compliance with FCC RF exposure limits in an IBM iSeries ThinkPad Type 1161 laptop computer and a Compaq iPaq Pocket PC. This device is only authorized to be used in laptop computers or PDAs that are the same as those used in the grant application. When the AirCard 575 is in use, users should maintain a distance of at least 15 mm between the antenna and the user's torso, head or legs.

WARNING (EMI) – United States FCC Information – This device complies with Part 15 of the FCC Rules. Operation of this device is subject to the condition that this device does not cause harmful interference.

If this equipment does cause harmful interference to radio or television reception, which can be determined by turning the equipment off and on, the user is encouraged to try to correct the interference by one or more of the following measures:

- **Reorient or relocate the receiving antenna**
- **Increase the separation between the equipment and receiver**
- **Connect the equipment into an outlet on a circuit different from that to which the receiver is connected**
- **Consult the dealer or an experienced radio/TV technician for help**

If you have purchased this product under a United States Government contract, it shall be subject to restrictions as set forth in subparagraph (c)(1)(ii) of Defense Federal Acquisitions Regulations (DFARs) Section 252.227-7013 for Department of Defense contracts, and as set forth in Federal Acquisitions Regulations (FARs) Section 52.227-19 for civilian agency contracts or any successor regulations. If further government regulations apply, it is your responsibility to ensure compliance with such regulations.