

The Dial Pad

Watcher includes a dial pad to make voice calls with the AirCard 710 wireless network card. Click the Voice tab to see it.

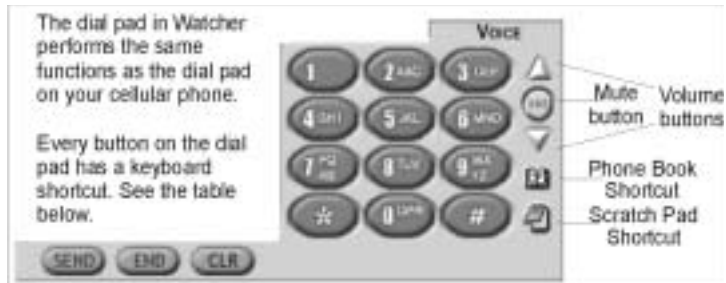


Figure 6-2: The Voice tab in the Watcher Main Window

Table 6-1 :The Watcher Dial Pad

Dial Pad Buttons	Function
0-9, #, * (or the same keys on your keyboard)	Use these buttons to enter the digits (and other characters) you want to dial. The numbers are displayed in the call status area until you press SEND, END, or CLR, or you receive an incoming call. Any of these buttons can be used to answer an incoming call if the Any-Key Answer feature is enabled (see "Voice Tab" on page 77). If you click these buttons during a call, the AirCard network card beeps and the characters are displayed in the Call Status area.
SEND (ENTER on your keyboard)	Use this button to dial numbers and to answer incoming calls. When you are not receiving an incoming call, clicking SEND dials the numbers in the call status area. If no numbers are displayed, Watcher re-dials the last number you dialed.
END (ESC on your keyboard)	Use this button to hang up or end a call, or to clear all the digits and characters in the Call Status area (i.e. to cancel a call that you've started to enter). This button also clears status messages.
CLR (BACKSPACE on your keyboard)	Use this button to clear the last number you've entered. If you hold this button down for one second, it has the same effect as the END key—so this button can also be used to hang up or end a call.

Table 6-1 :The Watcher Dial Pad

Dial Pad Buttons	Function
Volume Keys (Up and Down arrows on your keyboard)	Use the Up arrow to increase the volume of what you hear in the headset. Use the Down arrow to decrease the volume.
Mute Key	Use this key during a call to prevent the caller from hearing what you say. When no call is in progress, this key enables and disables the Silent Ringer feature.

Use on Notebooks,
HPCs, and PPCs

The Scratch Pad

The Scratch Pad gives you a place to record very brief notes (such as a name and phone number) temporarily.

Display the scratch pad by clicking the Scratch Pad button on the right side of the Watcher window.



Figure 6-3: The Watcher Scratch Pad

Note: The standard function keys for copy (CTRL+C), cut (CTRL+X), and paste (CTRL+V) can be used to move text from the Scratch Pad to another application (such as the Windows Notepad or a word processor).

To enter text:

- Type the text from your keyboard.

To erase all the text in the Scratch Pad:

- Click the clear button.

To close the scratch pad (saving any text in it):

- Click the ok button.

Note: If you click the SEND button without entering a number, Watcher redials the most recent number you dialed.

*Note: The Options window, displayed when you select **Tools > Options**, allows you to customize the sound played when you receive an incoming call and to enable and disable the Silent Ringer feature. See "Options..." on page 63.*

Making a Voice Call

Making a voice call using Watcher and the AirCard network card is very similar to using a cellular telephone handset.

Initiating a Voice Call

1. Plug in a headset to the AirCard connector, if one is not already connected, and put it on.
2. Enter the number you want to dial by either clicking the number buttons on the dial pad or typing the numbers on your keyboard.
3. Click the SEND button.

As the call is being dialed, Watcher displays "Dialing" and the phone number.

You can also initiate a call from the Call Log. The Call Log is displayed when you select Tools > Call Log (see "Call Log" on page 59).

Answering a Voice Call

Depending on how certain features are configured, when you receive an incoming call the following occurs:

- A sound is played, unless the Silent Ringer feature is enabled.
- If Watcher is in compact view when you receive the call, the Watcher window maximizes.

To answer a call:

1. Plug in a headset to the AirCard connector, if one is not already connected, and put it on.
2. Click the SEND button. (Or, if the Any-Key Answer feature is enabled, click any key except END or CLR.)

Ending a Voice Call

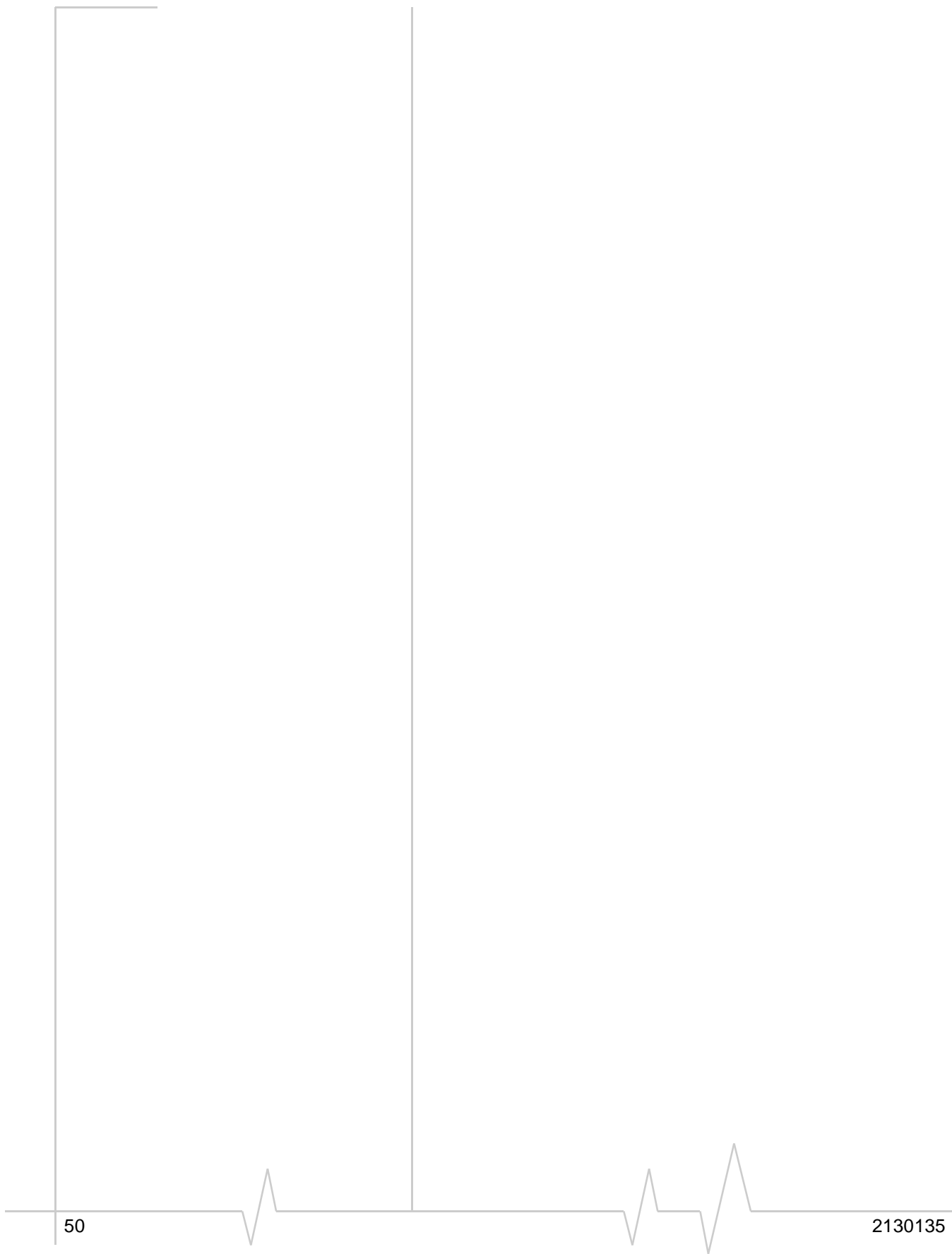
To end a voice call:

- Click the END button on the dial pad or press ESC on your keyboard.

or

- Click and hold the CLR button on the dial pad (or the BACKSPACE key on your keyboard) for more than one second.

Use on Notebooks,
HPCs, and PPCs



7: Watcher Menu Options

- The View Menu
- The Tools Menu
- The Help Menu

This chapter is primarily for your reference. It describes each option in each of the Watcher menus.

The View Menu



Figure 7-1: The Watcher View Menu

Always On Top

When Always On Top is enabled, the Watcher window displays in front of all other application windows, even when you position another window over Watcher. This allows you to view connection status indicators while using another application, such as your Internet browser.

To enable or disable Always On Top:

- Select View > Always On Top.

A check mark next to the option indicates that it is enabled.

Docking

When Docking is enabled, the Watcher window jumps to the edge of your screen when the window is dragged close to an edge. This allows you to easily position the window to a corner of your screen.

To enable or disable Docking

- Select View > Docking.

A check mark next to the option indicates that it is enabled.

Toggle Full/Compact

On notebook PCs, the Watcher window has two sizes.



Figure 7-2: Watcher in Full View (Top) and Compact View (Bottom)

The full window is required to initiate data connections and make voice calls, but if all you require from Watcher is status information, you can use the compact view.

To switch from the full window to the compact window:

- Select View > Toggle Full/Compact.
- or*
- Click the Toggle Full/Compact button (the middle button in the upper right corner of the Watcher window).



To switch from the compact window to the full window:

- Click the Toggle Full/Compact button.
- or*
1. Right click on the Watcher window.
 2. Select Toggle Full/Compact from the shortcut menu.



Note: The Watcher window switches to full view automatically when you receive an incoming call.

The Tools Menu



Figure 7-3: The Watcher Tools Menu

Use on Notebooks,
HPCs, and PPCs

SMS Manager...

The SMS Manager window lets you read, write, and reply to short messaging service (SMS) messages, also known as text messages. SMS (Short Messaging Service) is a feature that some service providers offer. It allows you to send and receive short messages through the GSM network.

You can exchange SMS messages with anyone who has an SMS-enabled GSM device, such as a mobile phone with text messaging or another Sierra Wireless AirCard® 710 or 750 wireless network card. Messages are limited to text because each SMS-capable device may display them differently—on a computer monitor, on a handheld display, or on the LCD screen of a phone handset, for instance.

Depending on your service provider, one or more of these methods of sending SMS messages may be available to you:

- Some wireless service providers have web pages on which anyone can enter a message and direct it to your phone number. In this case, anyone who has access to the Internet can send you a message, provided he or she knows your phone number and can locate the appropriate web page.
- Some service providers allow SMS messages to be sent through Internet e-mail applications. Your phone number is then used as an e-mail address (for example: 6046649010@serviceprovider.loopback.edu).
- Some products, such as the AirCard 710 and 750 network cards, have software that allows you to send messages to other subscribers, using their phone numbers to direct the message.

The SMS Manager... option in the Tools menu allows you to read, create and send SMS messages.

Note: Check with your service provider to see if you have a subscription to SMS service.

Reading SMS Messages: The Inbox

Incoming messages are stored in the Inbox until you delete them or until they expire (depending on your settings in the Options window – see “SMS Tab” on page 70).

The SMS indicator notifies you when new messages are received by displaying the icon below. The ToolTip (displayed when you position the mouse pointer on top of the icon) identifies how many unread messages you have. If the icon is flashing, one or more of the messages is urgent.



To read your SMS messages:

1. Double click the SMS icon, or select Tools > SMS Manager..., to display the SMS Manager window.
2. Click the Inbox tab if it is not already selected.

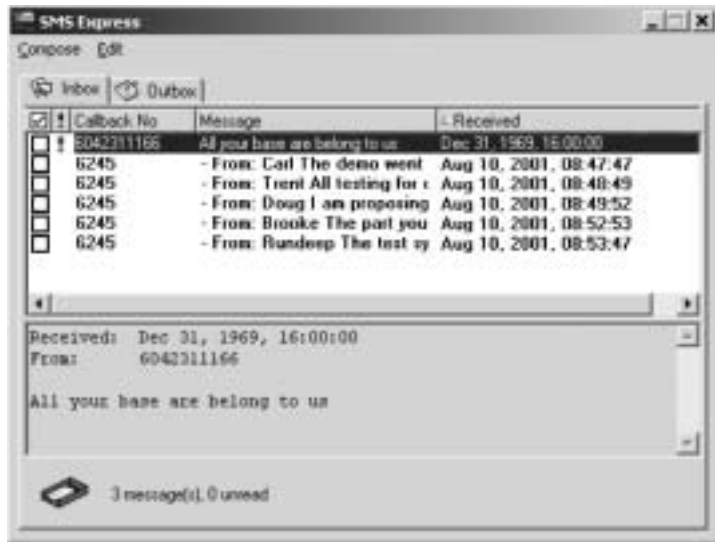


Figure 7-4: The SMS Manager Window, With Inbox Selected

Note: Unread messages are displayed in bold.

The message header is displayed in the top of the window, showing the address or phone number from which the message was sent, the beginning of the message, and the call back number.

3. Click the message header to display the message in the lower section of the window.

Messages marked with a red exclamation mark (!) have been tagged by the sender as being urgent or important.

To delete messages:

1. Use the check boxes to the left of the messages to select the messages you want to delete.

Note: Both Delete All and the message expiry features do not actually delete all available messages—they only delete those you have not yet read.

Note: The Reply to Sender menu option is only available if the e-mail address of the person who sent you the message is included in the message. This won't be available if, for example, the message was sent from a web site.

Note: The Call Back Sender menu option is only available if the message includes a valid call-back number.

2. Select Edit > Delete.
3. Confirm that you want to delete the messages by clicking Yes.

To delete all read messages:

1. Select Edit > Delete All.
2. Confirm that you want to delete the messages by clicking Yes.

Watcher also has a feature that allows you set an expiry period after which messages are automatically deleted. This is set in the Options window. (Select Tools > Options to display the window, then click the SMS tab. See "SMS Tab" on page 70.)

To forward a message:

1. Select the message header.
2. Select File > Forward Message... to open the Message window.
3. In the Message window you can edit the message, append text to the message, and send it. (See "Sending SMS Messages: The Outbox" on page 56.)

To reply to a message:

1. Select the message header.
2. Select File > Reply to Sender...to open the Message window.
3. In the Message window you can edit the message, append text to the message, and send it. (See "Sending SMS Messages: The Outbox" on page 56.)

To phone the sender of a message:

1. Select the message header.
2. Select File > Call Back Sender.

Watcher then dials and attempts to connect to the call-back number.

To exit the SMS Manager window:

1. Select File > Close or click the close box in the upper right corner.

Use on Notebooks,
HPCs, and PPCs

Note: In the Options window (see "SMS Manager..." on page 53) you can enable and disable the option to save outgoing messages to the Outbox.

Sending SMS Messages: The Outbox

The Outbox is where your outgoing messages are stored. Click the Outbox tab in the SMS Manager window to display it:

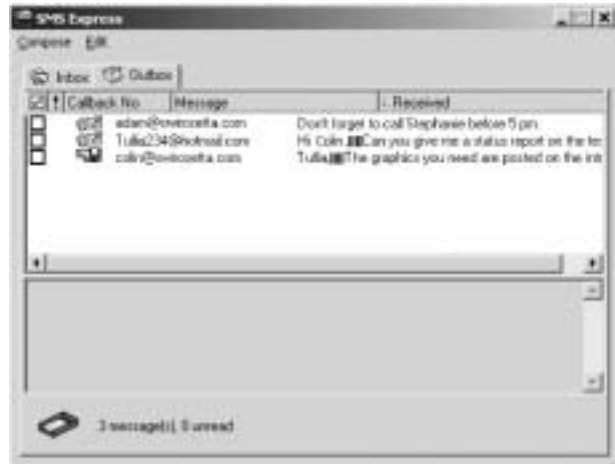





Figure 7-5: The Outbox Tab of the SMS Manager Window

The third column from the left indicates the status of each message in the Outbox:

Table 7-1 :Outgoing Message Status Icons

Icon	Meaning
	Saved The message has been saved in the Outbox but not yet sent.
	Sent The message has been sent successfully to the GSM network but has not yet been delivered to the recipient(s).
	Delivered The message has been delivered to the recipient(s)' mail box(es).

Figure 7-1 :Outgoing Message Status Icons

Icon	Meaning
	<p>Partially Sent The message has been sent to the network but the network did not respond. (This may indicate a network problem.)</p>
	<p>Not Sent The message was sent to the network and the network responded with an error. The error message is shown in the Status field when you display the message.</p>  <p>Some possible reasons for a failure to send are:</p> <ul style="list-style-type: none"> • You do not have a subscription to a service that allows you to send SMS messages. • The e-mail address in the To: field is not valid. • The message exceeded the maximum length for SMS messages. • There is a network problem or a problem with your account.

Use on Notebooks, HPCs, and PPCs

To send a message from the SMS Manager window:

1. Select File > New Message to open the Message window:



Figure 7-6: The Message Window

Note: A message can have up to 16 recipients.

2. Enter the recipients for the message by typing e-mail addresses, or click the To button to display the Add SMS Recipients window.

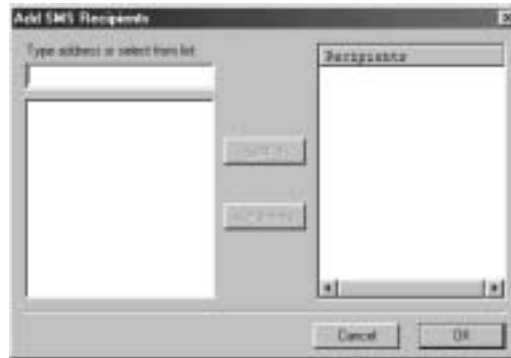


Figure 7-7: The Add SMS Recipients Window

The SMS Recipients window allows you to create a list of e-mail addresses for the To: field of the Message window. In this window, you can:

- Enter a new address and click Add-> to add it to the list of recipients.
- Select an address and click<-Remove to delete it from the list of recipients.

Use this window to create a recipient list and click OK to return to the Message window.

3. If you want to send a message that is tagged as urgent or important, select High from the Priority drop-down menu.
4. Type the message in the lower portion of the window.
5. If you want to save the message in the Outbox and send it later, select File > Save.
6. If you want to send the message immediately, click the Send button, or select File > Send.

To erase a message and start again:

- Select Edit > Clear.

All fields are erased, and you begin again as if starting a new message.

To open a message that is saved in the Outbox:

- Double click the message header to open the message in the Message window.

You can then edit the message and change or add recipients.

Exiting the SMS Manager Window

To exit from the SMS Manager window and return to the main Watcher window:

- Select File > Close.
or
- Click the Close box in the upper right corner of the SMS Manager window.

If there are any unsaved messages, Watcher asks whether you want to save them.

Phone Book

This feature is not yet available.

Call Log

The Call Log window maintains a record of your outgoing and incoming calls. To modify what the Call log monitors, select Tools > Options, then click the General tab (see “General Tab” on page 64). You can choose to keep a record of:

- None of your calls
- All of your calls
- The last 50 calls
- The last 100 calls

To display the Call Log window:

- Select Tools > Call Log.



Icon	Date/Time	From	To	Name	Type
↔	06-25 00:33:39	Hex (80420995C2)	8077	N/A	Data
↔	06-25 00:31:36	604-231-1100	Hex (8042099562)	N/A	Voice
↔	06-25 00:30:24	Hex (8042099562)	604-232-1425	N/A	Voice
↔	06-25 00:29:42	604-231-1100	Hex (8042099562)	N/A	Voice

Figure 7-8: The Call Log Window




For each message, the Call Log displays:

- The call direction (see the table “Call Direction Icons” later in this section)
- The date and time the call was made or received

Use on Notebooks,
HPCs, and PPCs

- The phone number of the caller (for incoming calls), or the phone number that you dialed (for outgoing calls)
- The name of the caller (for incoming calls), or the name of the person called (for outgoing calls), if available
- The type of call (data, voice, or fax)

Table 7-2 :Call Direction Icons

Icon	Meaning
	Incoming Call This is a call that you answered.
	Outgoing Call This is a call that you made.
	Missed Call This is a call you received but did not answer.

*Note: If you choose **File > Dial**, in the Call Log window you can establish a voice call to any number in the From or To column.*

To phone a number contained in one of the call records:

- Double click the record.

or

1. Select the number.
2. Select File > Dial.

This can be used to place voice calls **only**.

To save the information in the Call Log to a text file:

1. Select File > Save As...
2. Use the Save As dialog box to select a location and name for the file, then click Save.

To add a number as a record in your Address Book:

1. Select the record.
2. Select Edit > Add to Address Book.

To delete a record:

1. Select the record.
2. Select Edit > Delete.

To delete all records in the Call Log:

1. Select Edit > Delete All.
2. Click Yes to confirm the deletion.

*Note: Choosing **View > All** displays all call types in the Call Log window.*

To select what type of calls are displayed:

- Use the View menu to select the call types:
 - When Voice logs is checked, all voice calls are displayed.
 - When Data logs is checked, all dial-up data calls are displayed. (Packet mode connections have no phone numbers associated with them, and do not appear in the Call Log.)
 - When Fax logs is checked, all fax calls are displayed.

To sort the calls:

1. Click any column heading to sort by that column in ascending order.
2. Click the same column heading again to sort by the same column in descending order.

For example, to sort the calls by name, click the Name column heading. This sorts the records from A to Z. If you click the Name column heading again, the records will be sorted from Z to A.

Connection Manager

The Connection Manager is where dial-up data connections are set up. (For more information, see "Data Connections Through GSM and GPRS" on page 41.)

In the Connection Manager you can:

- Add new records for phone numbers to which you want to connect.
- Change existing records.
- Set the default connection.
- Select and establish a connection.

To add a phone number to the Connection Manager:

1. Select Tools > Connection Manager to open the Connection Manager window.



Figure 7-9: The Connection Manager Window

*Note: The default connection is the one established if you click the **Connect** button on the main Watcher window without making a selection from the drop-down menu.*

2. Click the Add... button to open the Connection Properties window.



Figure 7-10: The Connection Properties Window

3. Enter a name for the connection and complete the remaining fields noting the following:
 - If the phone number must be preceded with an area code, click the Use area code check box and enter the area code. Click the Use 1 check box if the phone number must be prefixed with a 1.
 - If dialing into a system that requires you to enter a user name and password, enter this information. If you want to save the information so that it is not necessary to enter it each time you connect, click the Save password check box.
4. Click OK to close the window and save the information you entered, or Cancel to close the window without saving.

To edit a Connection Manager record:

1. Click the connection to select it and click the Properties... button to open the Connection Properties window.
2. Enter the new information in the appropriate fields. (The Connection Name cannot be changed. To rename a connection record, you can create a new one and re-enter the connection information, then delete the old record.)
3. Click OK to close the window and save the information you entered, or Cancel to close the window without saving.

To delete a Connection Manager record:

1. Click the connection to select it and click the Delete button.
2. When prompted to confirm the deletion, click Yes.

*Note: Use the KeyGuard feature if you are concerned that you might inadvertently press **SEND** and dial a number.*

To connect to a number in the Connection Manager window:

- Click the connection to select it and click the Connect button.

The AirCard network card then attempts a connection to the phone number you selected.

To set the default connection:

- Click the connection to select it, then click the Set as Default button.

KeyGuard

The KeyGuard feature, like its equivalent on cellular telephone handsets, is designed to prevent accidental dialing. When the feature is enabled, clicking the SEND button, or any other button on the dial pad, has no effect.

To enable or disable KeyGuard:

1. Select Tools > KeyGuard.

A check mark next to the option indicates that it is enabled.

Options...

The Options window allows you to configure Watcher and the AirCard 710 wireless network card to your preferences. In the Options window you can:

- Enable and disable several features, including: Auto-Answer, Any-Key Answer, the Inactivity Time-Out, Auto-Connect, SMS Message Expiry, and the Lock Code.
- Select whether certain warning messages are displayed to warn you of circumstances such as your data connection being lost.
- Configure options related to Call Logging, the Watcher window, the call-back number in SMS messaging, sounds that notify you of incoming calls, new SMS messages, and new voice mail.

Using the Options Window

In the Options window, buttons, drop-down menus, and check boxes are provided to allow you to select your preferences.

- Use OK to exit the Options window, saving any changes you've made, or Cancel to exit without saving.
- Click Apply to save changes you have made, but keep the Options window open in order to change more settings

- The Restore Defaults button causes all the fields on all the tabs to revert to the settings they had at installation.

General Tab

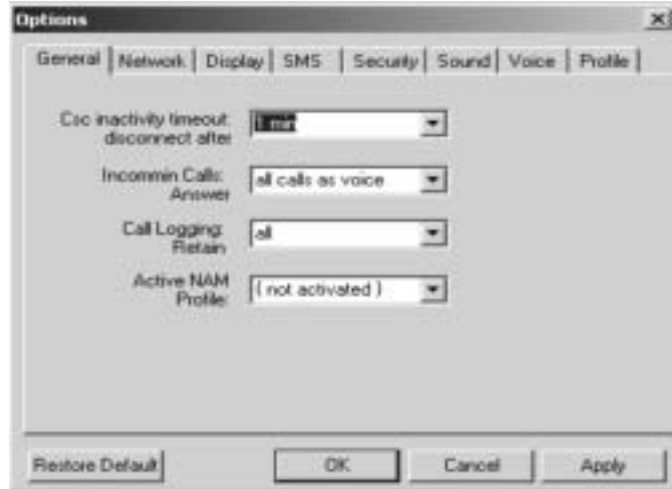


Figure 7-11: The General Tab of the Options Window

Table 7-3 :General Tab Options

Field	Description
Data Call Inactivity Timeout: Disconnect	The Inactivity Timeout terminates your connection to the GSM network automatically when the AirCard network card is inactive for the amount of time you specify here. (The AirCard network card is inactive when no data transmission is occurring.) Select Never to disable the feature. Otherwise, select the number of minutes after which you want to automatically disconnect.

Table 7-3 :General Tab Options

Field	Description
<p>Incoming Calls Answer</p>	<p>By default the AirCard network card is set to answer all calls as voice calls. To receive a fax or data call, you must set this field appropriately, before the call is answered. This means that anyone wanting to send a fax, or establish a data connection with the AirCard network card, must notify you in advance so that you can change this field before the call is made.</p> <p>This setting reverts to “all calls as Voice” whenever Watcher is restarted.</p> <p>If you select “next call as Fax” or “next call as Data”, the AirCard network card maintains the setting for one call, or until Watcher is restarted.</p> <p>If you select “all calls as Fax” or “all calls as Data”, the AirCard network card maintains the setting until you select another option.</p>
<p>Call Logging Retain</p>	<p>You have the option of maintaining records of your outgoing and incoming calls in the Call Log. (The Call Log is displayed when you select Tools > Call Log, and is described above.)</p> <p>This field allows you to specify the number of calls retained. Select none, all, last 50 calls, or last 100 calls from the drop-down menu.</p>

Use on Notebooks, HPCs, and PPCs

Table 7-3 :General Tab Options

Field	Description
<p>Active NAM* Profile</p>	<p>The AirCard network card allows you to configure and use up to two accounts (with two different phone numbers). This may be useful to users who want, for example, to have one account for business calls and one for personal calls.</p> <p>This drop-down menu lists these items: Auto-Select, NAM 1, and NAM 2. If one account has been activated, NAM 1 has a phone number next to it, and if two accounts have been activated, NAM 1 and NAM 2 have phone numbers.</p> <p>When Auto-Select is in effect, the AirCard network card uses the account most appropriate to your location, based on the coverage of your accounts.</p> <p>To configure a second account (where only one account has been activated):</p> <ol style="list-style-type: none"> 1. Select the option NAM 2 from this drop-down menu and click OK. 2. Stop, eject and re-insert the AirCard PC Card. 3. Launch Watcher; the Activation Wizard should launch. You can then configure a second account. <p>If two accounts are configured, both phone numbers should be displayed in this drop-down menu. To switch from one account to the other:</p> <ol style="list-style-type: none"> 1. Select the phone number from the drop-down menu. 2. Stop, eject and reinsert the AirCard PC Card.

*NAM stands for Number Assignment Module and is information stored in the flash memory of your SIM card. The information includes your phone number parameters specific to your service provider.

Network Tab

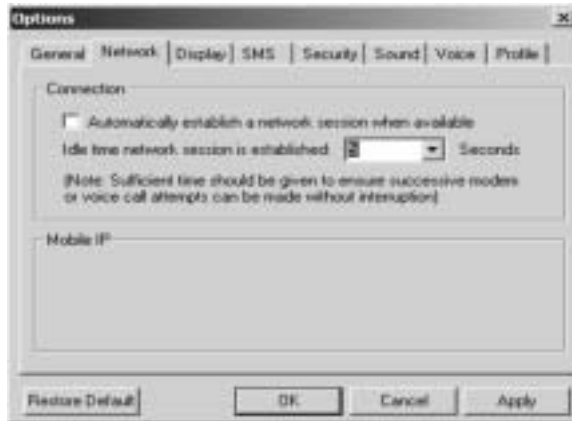


Figure 7-12: The Network Tab of the Options Window

Use on Notebooks,
HPCs, and PPCs

Table 7-4 :Network Tab Options

Field	Description
Automatically establish a network session when available	The AirCard network card can try to establish a packet mode connection whenever the AirCard PC Card is inserted, where GPRS service is available. (See "Packet Mode Connections" on page 43.)

Display Tab

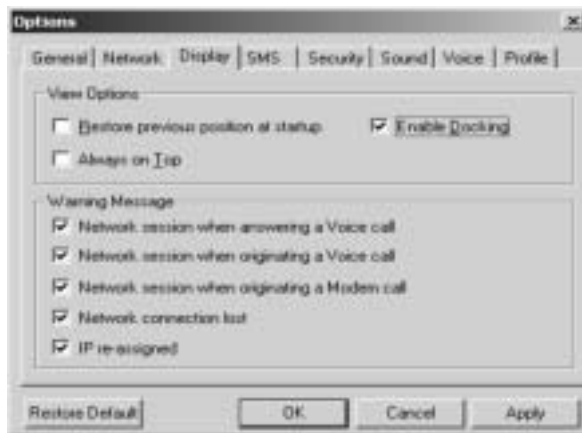


Figure 7-13: The Display Tab of the Options Window

Table 7-5 :Display Tab Options

Field	Description
<p>Restore previous position on startup</p>	<p>This field determines where the full Watcher window appears when launched. (The full and compact views of the Watcher window are shown under the <i>Toggle Full/Compact</i> heading above.)</p> <p>If this feature is disabled, Watcher always displays in the center of your screen.</p> <p>If you enable this feature and move the Watcher window, the window will re-appear in its new position if you close and re-open it, or change the view to compact and then full again.</p> <p>Use the check box to enable and disable the feature. (The feature is enabled when checked.)</p>
<p>Remember Compact View position</p>	<p>This field determines where the compact Watcher window appears.</p> <p>If this feature is enabled, when you switch from the full view to the compact view, the Watcher window remains in the same place.</p> <p>If this feature is disabled, when you switch from the full view to the compact view, the Watcher window displays in the position it last occupied.</p> <p>Use the check box to enable and disable this feature. (The feature is enabled when checked.)</p>
<p>Enable Docking</p>	<p>When Docking is enabled, the Watcher window jumps to the edge of your screen when the window is dragged close to an edge. This allows you to easily position the window in a corner of your screen.</p> <p>Use the check box to enable and disable this feature. (The feature is enabled when checked.) You can also enable and disable this feature by selecting View > Docking.</p>

Table 7-5 :Display Tab Options

Field	Description
<p>Always on Top</p>	<p>When Always On Top is enabled, the Watcher window displays in front of all other application windows, even when you position another window over Watcher. This allows you to view connection status indicators while using another application, such as your Internet browser.</p> <p>Use the check box to enable and disable this feature. (The feature is enabled when checked.) You can also enable and disable this feature by selecting View > Always on Top.</p>
<p>GPRS premium service charge (for non-subscribers)</p>	<p>When this feature is enabled, a warning message is displayed any time you select GPRS from the drop-down menu on the main Watcher window, to remind you that you may be charged extra for this service. (Depending on your billing plan, your service provider may apply a surcharge to GPRS service.)</p> <p>Use the check box to enable and disable this feature. (The feature is enabled when checked.)</p>

Use on Notebooks, HPCs, and PPCs

Table 7-5 :Display Tab Options

Field	Description
<p>Data connection lost</p>	<p>When this feature is enabled, a warning message is displayed any time you lose your connection to the GSM network.</p> <p>Use the check box to enable and disable this feature. (The feature is enabled when checked.)</p>
<p>IP re-assigned</p>	<p>All devices connected to the Internet require an IP (Internet Protocol) address. In some technologies, a device is assigned a permanent IP address and that IP address can never be used by another device.</p> <p>Where DHCP (Dynamic Host Configuration Protocol) is used, the network maintains a pool of IP addresses and assigns them to devices as needed. The AirCard 710 network card uses DHCP so that it is assigned an IP address by the network. This means that the IP address for your AirCard network card changes each time you connect, and sometimes during a connection.</p> <p>When this feature is enabled, a warning message is displayed each time the network assigns a new IP address to the AirCard network card.</p> <p>Use the check box to enable and disable this feature. (The feature is enabled when checked.)</p>

SMS Tab

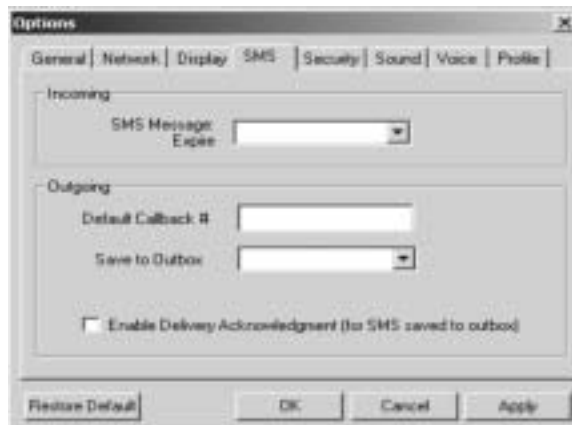


Table 7-6 :SMS Tab Options

Field	Description
<p>SMS Messages: Expire</p>	<p>This feature allows for the automatic deletion of SMS messages that have been in your Inbox for a specified amount of time. The SMS messaging feature is described in detail under the heading <i>Mobile Messaging...</i> above.</p> <p>To disable automatic deletion of messages, select Never from the drop-down menu.</p> <p>To enable automatic deletion of messages, select a number of days from the drop-down menu.</p> <p>Only messages that have been “read” (displayed in the SMS Manager window) are deleted by this feature. Manual deletion of messages is covered in the section on <i>Mobile Messaging...</i> above.</p>
<p>Override Callback #</p>	<p>When you send SMS messages, you have the option of specifying a call back number so that the message recipient will know how to reach you. By default, your call back number is your AirCard phone number. This feature allows you to use a different number than the AirCard phone number.</p> <p>To set a new call back number, click the check box to enable the feature and enter a number in the field. (Leave the field blank if you prefer to have no call back number on your messages.)</p> <p>To disable the feature (and use the AirCard phone number as your call back number), click the check box so that it is not checked.</p>

Use on Notebooks, HPCs, and PPCs

Table 7-6 :SMS Tab Options

Field	Description
Save to Outbox	<p>You have the option of retaining, in the Outbox, a copy of messages that you send. See the <i>SMS Manager...</i> section for details about the Outbox.</p> <p>This feature allows you to specify whether outgoing messages are saved in the Outbox. If you do not want to save any messages, select never. If you want to be prompted as you send each message, as to whether you want to retain a copy, select ask first. If you want to retain a copy of all messages you send, select automatically.</p> <p>Note that if you do not save messages to the outbox you do not receive status messages, such as the one that notifies you of a successful delivery.</p>

Security Tab



Use on Notebooks,
HPCs, and PPCs

Table 7-7 :Security Tab Options

Field	Description
<p>Lock modem</p>	<p>The Lock Code feature can be used to prevent others from using your AirCard network card and your account. When the Lock Code is enabled, you are prompted to enter a code any time Watcher is launched, and if the wrong code is entered, Watcher closes. (This makes it impossible to use the AirCard network card without knowing the lock code.) By default the lock code is the last four digits of your phone number.</p> <p>To disable the feature, select never from the drop-down menu. To enable the feature, so that you are prompted for a lock code the next time you launch Watcher, select on power up from the drop-down menu. (The Lock Code feature will then remain enabled until you disable it by selecting never in this field.)</p>
<p>Lock Modem Now</p>	<p>This field allows you to enable the Lock Code feature immediately. (If you select on power up in the previously described drop-down menu, you need to close Watcher before the lock code comes into effect.)</p> <p>When you click the button, Watcher prompts, "Lock the modem now?". Click Yes at this prompt to lock the AirCard network card.</p>

Table 7-7 :Security Tab Options

Field	Description
<p>Change Lock Code</p>	<p>This button allows you to set a new lock code.</p> <p>To change the lock code:</p> <ol style="list-style-type: none"> 1. Click the Change Lock Code button. 2. Enter your existing lock code (the last four digits of your phone number unless you have changed it) at the prompt. 3. Enter a new lock code. 4. Enter your new lock code for confirmation. 5. Click OK.

Sounds Tab



Table 7-8 :Sounds Tab Options

Field	Description
Enable	<p>This field allows you to enable and disable all sounds.</p> <p>When this box is checked, you have the option of individually enabling and disabling the Call Alert, Incoming Call, New SMS Message, and New Voice mail sounds.</p> <p>When the box is not checked, there are no sounds to notify you of any of these events.</p> <p>Use the check box to indicate whether you want all sounds enabled or disabled.</p>
Call Alert	<p>Depending on your billing plan, you may have a feature called Call Alert. When you are on a call, this feature notifies you when you have another incoming call. You can then ignore the new incoming call or put your current caller on hold and answer the new call. (Contact your service provider if you require more information about Call Alert.)</p> <p>If you have Call Alert, you can use this field to select whether a sound is played to notify you of another incoming call when you are already on a voice call.</p> <p>Use the check box to enable and disable the sound assigned to Call Alert. The play button (with the arrow head on it) allows you to hear the sound assigned to this feature. If you have another sound file you would prefer to play for call alerts, you can use the Browse button to select it. (Any *.wav file can be used.)</p>

Use on Notebooks,
HPCs, and PPCs

Table 7-8 :Sounds Tab Options

Field	Description
<p>Incoming Call</p>	<p>This field allows you to select whether a sound is played when you receive a call.</p> <p>When this is disabled, the Silent Ringer icon is displayed in the indicator area of the main Watcher window. The only notification you will then have of an incoming voice call is the “Voice Call From ...” or “Roam Call From ...” message displayed in the call status area.</p> <p>Use the check box to enable or disable the sound. The play button (with the arrow on it) allows you to hear the sound assigned to incoming calls. If you have another sound file you would prefer to use, you can use the Browse button to select it. (Any *.wav file can be used.)</p>
<p>New SMS Message</p>	<p>This field allows you to select whether a sound is played when your receive a new SMS message.</p> <p>When this is enabled, a sound is played each time a message arrives. When disabled no sound is played.</p> <p>Use the check box to enable or disable the sound. The play button (with the arrow on it) allows you to hear the sound assigned to new SMS messages. If you have another sound file you would prefer to use, you can use the Browse button to select it. (Any *.wav file can be used.)</p>
<p>New Voicemail</p>	<p>This field allows you to select whether a sound is played when a new voice mail message arrives.</p> <p>When this is enabled, a sound is played when voice mail arrives. When disabled, no sound is played.</p> <p>Use the check box to enable or disable the sound. The play button (with the arrow head on it) allows you to hear the sound assigned to new voice mail. If you have another sound file you would prefer to use, you can use the Browse button to select it. (Any *.wav file can be used.)</p>

Table 7-8 :Sounds Tab Options

Field	Description
Headset Volume	<p>This slider allows you to adjust the volume of the ear piece on your headset. This affects only the volume of what you hear. (That is, it does not adjust the volume of the speaker.) This performs the same function as the volume controls on the main Watcher window.</p> <p>To increase the volume, drag the slider to the right. To decrease the volume, drag the slider to the left.</p>

Use on Notebooks, HPCs, and PPCs

Voice Tab



Table 7-9 :Voice Tab Options

Field	Description
Auto-Answer Incoming Calls	<p>This field allows you to enable and disable the Auto-Answer feature, and when enabled to select the number of rings after which a voice call is answered.</p> <p>To disable the feature, select off from the drop-down menu. To enable the feature, select the number of rings after which Watcher automatically answers the call.</p>

Table 7-9 :Voice Tab Options

Field	Description
<p>Auto-Retry</p>	<p>This field allows you to enable and disable the Auto-Retry feature, and when enabled to select the interval between retries.</p> <p>At times when a large number of users are connected to a single base station on the GSM network, you may be unable to make a network connection on your first attempt. When enabled, Auto-Retry attempts the connection up to five times at the interval you select. When disabled, the AirCard network card does not retry automatically.</p> <p>To disable the feature, select off. Otherwise, select the interval at which you want automatic retries to occur.</p>
<p>Any-Key Answer</p>	<p>This field allows you to enable and disable the Any-Key Answer feature.</p> <p>When enabled, you can answer an incoming call by clicking any button on the dial pad except End and Clr. When disabled, you must click the Send key to answer incoming calls.</p> <p>Use the check box to enable and disable the feature. (The feature is enabled when checked.)</p>
<p>Auto-Hyphenation</p>	<p>This field allows you to enable and disable the Auto-Hyphenation feature.</p> <p>When enabled, a hyphen is automatically inserted after the area code, and between the first three and last four digits of a phone number, as you enter the number. (This has no effect on what is dialed.) When disabled, no hyphen is inserted as you enter a phone number.</p> <p>Use the check box to enable and disable the feature. (The feature is enabled when checked.)</p>

Table 7-9 :Voice Tab Options

Field	Description
<p>Tone Length</p>	<p>DTMF (Dual Tone Multi-Frequency) is the system used by touch tone phones under which a specific frequency or tone is assigned to each key. There is a standard length for these tones. However, some voice mail systems require a shorter or longer than normal length tone.</p> <p>This field allows you to set the AirCard network card to use a shorter or longer tone for systems that require it.</p> <p>The recommendation is to select normal unless your service provider indicates that a different tone is required.</p>
<p>Mute</p>	<p>When DTMF mute is enabled, there is no audible tone while the AirCard network card dials.</p> <p>Use the check box to enable and disable the feature. (The feature is enabled when checked.)</p>
<p>Minute Alert</p>	<p>This field allows you to enable and disable the Minute Alert feature.</p> <p>When enabled, the AirCard network card beeps at one minute intervals while you are on voice calls. This allows you to keep track of the duration of your call.</p> <p>Use the check box to enable and disable the feature. (The feature is enabled when checked.)</p>
<p>Service Alert</p>	<p>The field allows you to enable and disable the Service Alert feature.</p> <p>When enabled, the AirCard network card emits a tone whenever it goes from being out of service to being in service, and whenever it goes from being in service to being out of service.</p> <p>Use the check box to enable and disable the feature. (The feature is enabled when checked.)</p>

Use on Notebooks,
HPCs, and PPCs

Table 7-9 :Voice Tab Options

Field	Description
Voice Mail Change ...	<p>Depending on your billing plan, you may have a Voice Mail feature that allows callers to leave you a message when you don't answer a call. If you have this feature, then you access your voice messages by dialing a number specific to your service provider.</p> <p>When the AirCard network card is configured, the phone number your service provider uses for voice mail is automatically set up for you. If this number should change, you can change the number here. To change the number:</p> <ol style="list-style-type: none"> 1. Click Change... 2. Enter the new phone number in the window that appears. 3. Click OK.

Profile Tab

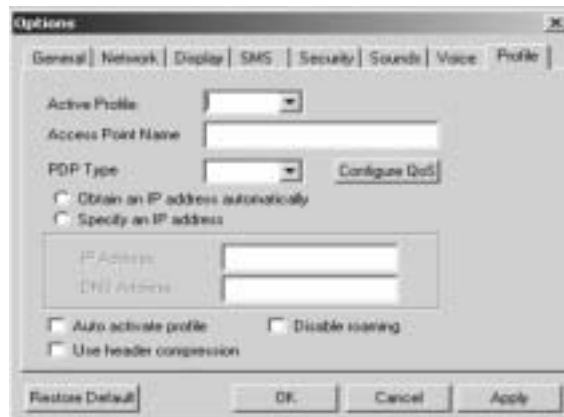


Figure 7-14: The Profile Tab of the Options Window

The Profile tab allows you to configure multiple GSM accounts to use with your AirCard network card—such as if you travel frequently to another city and have established a GSM account with a service provider there. You might do so to avoid roaming charges when using your AirCard network card in the other city.

How these settings are configured depends on information from your service provider(s). Please contact them for details and assistance.

Administration > Activation Wizard...

The Activation Wizard is used to configure the AirCard to use your account. An overview of this process is provided in "Account Activation and Configuration" on page 7, with details in the installation chapters for your particular computer platform.



Figure 7-15: The Activation Wizard Window

Use on Notebooks,
HPCs, and PPCs

Administration > Modem Update...

This option enables you to update the firmware inside the AirCard 710 wireless network card's flash memory. See the instructions provided with your firmware upgrade or by appropriate technical support personnel for information on how to perform an update.

The Help Menu

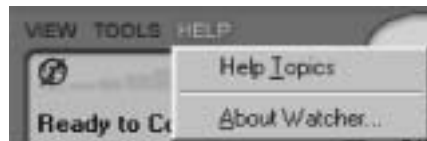


Figure 7-16: The Help Menu

Help Topics...

The AirCard 710 network card comes with complete online help for notebook PCs. To get help on any topic:

- Select Help > Help Topics...

If the topic you want to display has a link on the main window, click the link.

*Note: Help is also available in most Watcher windows by clicking the **Help** button or by pressing the **F1** key on your keyboard.*

If you do not see the topic you want to display, use the Index, Find, or Help Topics buttons to display the corresponding window:

The Contents Tab

The Contents tab shows how information in the help system is organized, and lets you browse by topic.



Figure 7-17: The Help Window, With Contents Displayed

Use the scroll bar in the Contents tab to locate a topic of interest. Topics that have a book icon next to them can be expanded by double clicking the icon. Double click a topic to display its window.

The Index Tab

The Index tab presents the help contents in another way, sorting them by subject keyword:



Figure 7-18: The Index Tab of the Help Window

In the Index tab, a list of topics is displayed in the lower portion of the window. Search for an index entry by either typing the first few letters in the field at the top, or use the scroll bars to scan the list of entries. When you locate an entry you want to display, click the entry and click Display.

The Find Tab

The Find tab uses a computer-generated database of words in the help system to let you search. If you are looking for a particular word not in the index or contents, click the Find tab, then select a radio button in the wizard to generate a database. Then use the word matching options to locate the help section you want to display

Use on Notebooks, HPCs, and PPCs



Figure 7-19: The Find Setup Wizard

About Watcher...



Figure 7-20: The About Watcher Window

When you choose Help > About, you see a window which displays:

- The phone number of your account
- The Electronic Serial Number (ESN), a number assigned to each AirCard 710 network card when it is manufactured
- The IP (Internet Protocol) Address currently assigned to the AirCard network card
- The version of Watcher in use
- The version of the AirCard driver (software that forms the interface between the AirCard and your operating system) in use
- The hardware version of the card itself
- The version of firmware (software that resides in the flash memory of the AirCard) in use
- The version of the bootloader (a component of the firmware) in use

If you have an Internet connection, you can go to the Sierra Wireless web site by clicking the www.sierrawireless.com button.

8: Network Adapter Manager (for Multiple Network Cards)

- How Windows® Works With Network Interface Cards
- Windows 95, 98, NT and Me
- Windows 2000 and XP
- Pop-Up Menu Items

Note: If you later install software for another AirCard network card, such as the AirCard 300, 400, 510, or 555 models, you should re-install the Network Adapter Manager from the AirCard 710 CD. Earlier versions of the Network Adapter Manager do not support the AirCard 710 network card.

On notebook PCs, the AirCard® 710 wireless network card comes with an application, called the Network Adapter Manager, designed to manage multiple network interface cards.

The Network Adapter Manager is necessary because the AirCard behaves differently for each type of connection. The AirCard 710 behaves as:

- A modem during dial-up data connections
- A phone during voice connections
- A network interface card during packet mode data connections

It is only while the AirCard 710 is behaving as a network interface card (when there is an active GPRS connection), and when you have another type of network connection present, that the Network Adapter Manager may be necessary.

The Network Adapter Manager launches automatically whenever Windows is started. Unless you manually exit the application, it remains running from the time you start Windows until you shut down. Generally, the only evidence that the Network Adapter Manager is running is the status area icon. It has no control windows, only menus available from the status area icon (see Figure 8-1: "The Network Adapter Manager Icon for the AirCard 710 PC Card" on page 86).

How Windows® Works With Network Interface Cards

When you have more than one network interface card inserted, Windows routes the data traffic through only one of the cards. This means that when you have a packet mode connection with the AirCard 710 network card, and you have another

Use on Notebook
PCs only

network interface card (such as an Ethernet or Token Ring LAN card) inserted, data traffic is routed through either the AirCard 710 or the LAN card—not both. The card through which data traffic is being routed is the “primary” card. The Network Adapter Manager shows you which card is primary by displaying an icon in the status area (usually located in the lower right corner of your screen).



Figure 8-1: The Network Adapter Manager Icon for the AirCard 710 PC Card

Depending on which card is primary, the Network Adapter Manager displays one of these icons:

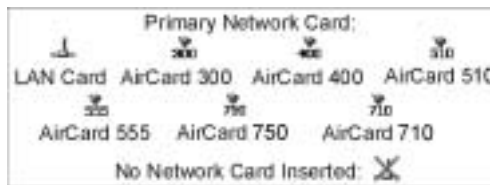


Figure 8-2: Status Area Icons for Network Adapter Manager

The ToolTip, displayed when you position the pointer over the Network Adapter Manager icon in the status area, identifies the primary card:



Figure 8-3: The Status Area ToolTip Showing a LAN Card as Primary

How Network Adapter Manager works depends on your operating system.

Windows 95, 98, NT and Me



In Windows 95, 98, NT, and Me, the Network Adapter Manager can be used to switch between the AirCard 710 network card and other network interface cards.

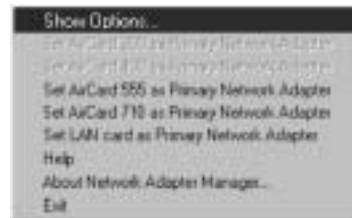
Switching Primary Cards

If you initiate a packet mode connection with the AirCard 710 network connection while a LAN card is primary, the Network Adapter Manager automatically makes the AirCard network card the primary card, rerouting data traffic from the wired LAN card to the AirCard 710 wireless network card.

Note: Switching between cards while using a network program (such as a browser) is not recommended, since the program may behave strangely when its network connection changes. Close network applications, switch cards, then launch the applications again.

The Network Adapter Manager also has a menu through which you can switch primary cards. To switch cards:

1. Right click the Network Adapter Manager icon in the status area to display the shortcut menu.
2. Select the card you want to use as the primary card from the menu.



or

Select Show Options from the menu. In the window that appears, use the radio buttons to select the card you want to use as the primary card and click OK.



Windows 2000 and XP

Windows 2000 and XP have more advanced device handling capabilities than Windows 95, 98, NT, and Me. If more than one network card is detected, Windows 2000 and XP automatically route network traffic through the card that provides the highest transmission speed.

Generally, a wireline LAN card (such as an Ethernet card) provides faster transmission speed than a wireless card (such as the AirCard 710 network card). If, for example, you have an AirCard and an Ethernet card installed and active on your

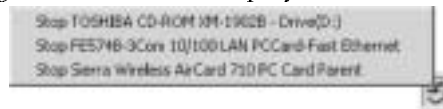
Use on Notebook
PCs only

laptop, Windows routes network traffic through the Ethernet card because it offers the higher transmission speed. If you then want to take the computer to another location, you can stop the Ethernet card (as described in “Stopping a Network Card”, later in this section), disconnect the cable to the Ethernet card, and Windows will automatically begin routing network traffic through the AirCard wireless card instead.

Since Windows 2000 and XP have this enhanced method of handling multiple PC Cards, the Network Adapter Manager does not allow you to switch cards from the shortcut menu. You can control which card is the primary card by stopping the cards you do not want to use.

Stopping a Network Card

1. Click the PC Card icon in the status area.
2. A listing of active cards is displayed.



3. Click the card you want to stop in the listing.

Windows 2000 and XP reroute traffic to the fastest of the remaining network cards. You can eject the stopped card if you wish.

Pop-Up Menu Items

Online Help

To display online help for the Network Adapter Manager, right click the Network Adapter Manager status area icon, then select Help from the shortcut menu.

Version Information

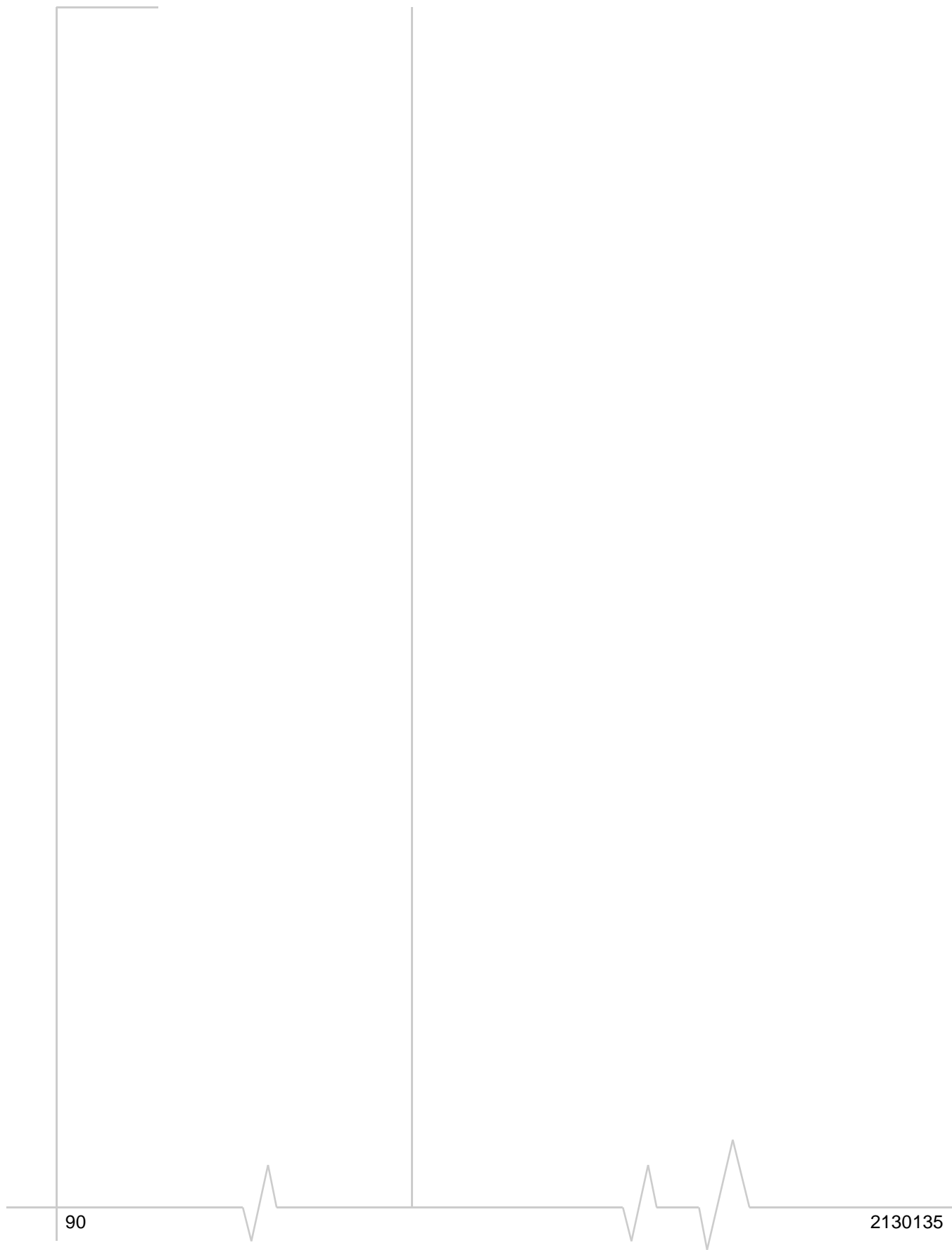
To display version information for the Network Adapter Manager, right click the Network Adapter Manager status area icon, then select About Network Adapter Manager from the menu.

Closing the Network Adapter Manager

To close the Network Adapter Manager:

1. Right click the Network Adapter Manager status area icon.
2. Select Exit from the shortcut menu.

Use on Notebook
PCs only



9: AirCard 710 PC Card: Technical Specifications

- LED Operation
- Radio Frequency and Electrical Specifications
- Environmental Specifications

This chapter describes the function of the AirCard 710 LED indicator, and provides technical product data for the AirCard 710 wireless network card.

LED Operation

The AirCard 710 housing has a single red/green light-emitting diode (LED) on the antenna end of the card, near the headset connector. It indicates the status of the card.

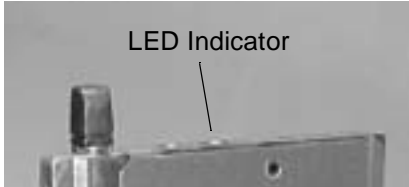


Figure 9-1: Location of the AirCard 710 LED Status Indicator

The LED operates as follows:

Table 9-1 :LED Operation

LED Behavior	Indicates
Solid amber*	The AirCard is powering up.
Blinking amber	The AirCard is searching for a channel.
Solid green	A call is in progress.
Blinking green	The AirCard has acquired a channel and is in idle mode (no call is in progress).
Solid red	An error has occurred.

* Amber is used to describe the color of the LED when both red and green are lit.

Radio Frequency and Electrical Specifications

Table 9-2 :Radio Frequency & Electrical Specifications

Approvals	<i>Compliant with:</i> GPRS GSM Release 97 SMG 31 Phase 2+ FCC Parts 15, and 24 Industry Canada
Voltage	+5Vdc from PCMCIA slot
Current	<i>Typical requirement:</i> 4 TX slots on 1.20A peak, 0.80A average 2 TX slots on 0.77A peak, 0.40A average 1 TX slots on 0.55A peak, 0.22A average Standby 15mA
Transmit	<i>PCS:</i> 1850 to 1910 MHz
Receive	<i>PCS:</i> 1930 to 1990 MHz
Channel Spacing	200kHz
Freq. Stability	0.1ppm

Environmental Specifications

Table 9-3 :Environmental Specifications

Operating Temp.	-20 °C to +60 °C (ambient, outside PCMCIA enclosure)
Storage Temp.	-30 °C to +85 °C
Humidity	95% (non-condensing)
Vibration	15 g peak 10 to 2000Hz (non-operating)
Drop	30" (76 cm) onto vinyl covered concrete

➤➤ | 10: AirCard 710 PC Card: Regulatory Information

This device complies with Parts 2, 15 and 24 of the FCC Rules. Operation is subject to the condition that this device does not cause harmful interference. FCC guidelines stipulate that the antenna should be more than 20mm (0.8") from all persons.

FCC ID: N7NAC710

Industry Canada #: PENDING

Where appropriate, the use of the equipment is subject to the following conditions:

CAUTION Unauthorized modifications or changes not expressly approved by Sierra Wireless, Inc. could void compliance with regulatory rules, and thereby your authority to use this equipment.

WARNING (EMI) – United States FCC Information – This equipment has been tested and found to comply with the limits pursuant to Part 15 of the FCC Rules. These limits are designed to provide reasonable protection against harmful interference in an appropriate installation. This equipment generates, uses, and can radiate radio frequency energy and, if not installed and used in accordance with the instructions, may cause harmful interference to radio communication. However, there is no guarantee that interference will not occur in a particular installation.

If this equipment does cause harmful interference to radio or television reception, which can be determined by turning the equipment off and on, the user is encouraged to try to correct the interference by one or more of the following measures:

- Reorient or relocate the receiving antenna
- Increase the separation between the equipment and receiver
- Connect the equipment into an outlet on a circuit different from that to which the receiver is connected
- Consult the dealer or an experienced radio/TV technician for help

WARNING (EMI) – Canada – This digital apparatus does not exceed the Class B limits for radio noise emissions from digital apparatus as set out in the interference causing equipment standard entitled "Digital Apparatus", ICES-003 of the Department of Communications.

Cet appareil numérique respecte les limites de bruits radioélectriques applicables aux appareils numériques de Classe B prescrites dans la norme sur le matériel brouilleur: "Appareils Numériques", NMB-003 édictée par le ministre des Communications.

If you have purchased this product under a United States Government contract, it shall be subject to restrictions as set forth in subparagraph (c)(1)(ii) of Defense Federal Acquisitions Regulations (DFARs) Section 252.227-7013 for Department of Defense contracts, and as set forth in Federal Acquisitions Regulations (FARs) Section 52.227-19 for civilian agency contracts or any successor regulations. If further government regulations apply, it is your responsibility to ensure compliance with such regulations.

>> | **Index**



