



# Product Technical Specification

## AirPrime HL8549 and HL8549-G



**SIERRA**  
WIRELESS®

4115653  
3.0  
July 31, 2014

## Important Notice

Due to the nature of wireless communications, transmission and reception of data can never be guaranteed. Data may be delayed, corrupted (i.e., have errors) or be totally lost. Although significant delays or losses of data are rare when wireless devices such as the Sierra Wireless modem are used in a normal manner with a well-constructed network, the Sierra Wireless modem should not be used in situations where failure to transmit or receive data could result in damage of any kind to the user or any other party, including but not limited to personal injury, death, or loss of property. Sierra Wireless accepts no responsibility for damages of any kind resulting from delays or errors in data transmitted or received using the Sierra Wireless modem, or for failure of the Sierra Wireless modem to transmit or receive such data.

## Safety and Hazards

Do not operate the Sierra Wireless modem in areas where cellular modems are not advised without proper device certifications. These areas include environments where cellular radio can interfere such as explosive atmospheres, medical equipment, or any other equipment which may be susceptible to any form of radio interference. The Sierra Wireless modem can transmit signals that could interfere with this equipment. Do not operate the Sierra Wireless modem in any aircraft, whether the aircraft is on the ground or in flight. In aircraft, the Sierra Wireless modem **MUST BE POWERED OFF**. When operating, the Sierra Wireless modem can transmit signals that could interfere with various onboard systems.

---

*Note: Some airlines may permit the use of cellular phones while the aircraft is on the ground and the door is open. Sierra Wireless modems may be used at this time.*

---

The driver or operator of any vehicle should not operate the Sierra Wireless modem while in control of a vehicle. Doing so will detract from the driver or operator's control and operation of that vehicle. In some states and provinces, operating such communications devices while in control of a vehicle is an offence.

## Limitations of Liability

This manual is provided "as is". Sierra Wireless makes no warranties of any kind, either expressed or implied, including any implied warranties of merchantability, fitness for a particular purpose, or noninfringement. The recipient of the manual shall endorse all risks arising from its use.

The information in this manual is subject to change without notice and does not represent a commitment on the part of Sierra Wireless. SIERRA WIRELESS AND ITS AFFILIATES SPECIFICALLY DISCLAIM LIABILITY FOR ANY AND ALL DIRECT, INDIRECT, SPECIAL, GENERAL, INCIDENTAL, CONSEQUENTIAL, PUNITIVE OR EXEMPLARY DAMAGES INCLUDING, BUT NOT LIMITED TO, LOSS OF PROFITS OR REVENUE OR ANTICIPATED PROFITS OR REVENUE ARISING OUT OF THE USE OR INABILITY TO USE ANY SIERRA WIRELESS PRODUCT, EVEN IF SIERRA WIRELESS AND/OR ITS AFFILIATES HAS BEEN ADVISED OF THE POSSIBILITY OF SUCH DAMAGES OR THEY ARE FORESEEABLE OR FOR CLAIMS BY ANY THIRD PARTY.

Notwithstanding the foregoing, in no event shall Sierra Wireless and/or its affiliates aggregate liability arising under or in connection with the Sierra Wireless product, regardless of the number of events, occurrences, or claims giving rise to liability, be in excess of the price paid by the purchaser for the Sierra Wireless product.

Customer understands that Sierra Wireless is not providing cellular or GPS (including A-GPS) services. These services are provided by a third party and should be purchased directly by the Customer.

**SPECIFIC DISCLAIMERS OF LIABILITY:** CUSTOMER RECOGNIZES AND ACKNOWLEDGES SIERRA WIRELESS IS NOT RESPONSIBLE FOR AND SHALL NOT BE HELD LIABLE FOR ANY DEFECT OR DEFICIENCY OF ANY KIND OF CELLULAR OR GPS (INCLUDING A-GPS) SERVICES.

## Patents

This product may contain technology developed by or for Sierra Wireless Inc.

This product includes technology licensed from QUALCOMM®.

This product is manufactured or sold by Sierra Wireless Inc. or its affiliates under one or more patents licensed from InterDigital Group and MMP Portfolio Licensing.

## Copyright

© 2014 Sierra Wireless. All rights reserved.

## Trademarks

Sierra Wireless®, AirPrime®, AirLink®, AirVantage®, WISMO® and the Sierra Wireless and Open AT logos are registered trademarks of Sierra Wireless, Inc. or one of its subsidiaries.

Watcher® is a registered trademark of NETGEAR, Inc., used under license.

Windows® and Windows Vista® are registered trademarks of Microsoft Corporation.

Macintosh® and Mac OS X® are registered trademarks of Apple Inc., registered in the U.S. and other countries.

QUALCOMM® is a registered trademark of QUALCOMM Incorporated. Used under license.

Other trademarks are the property of their respective owners.

## Contact Information

Sales Desk:	Phone:	1-604-232-1488
	Hours:	8:00 AM to 5:00 PM Pacific Time
	Contact:	<a href="http://www.sierrawireless.com/sales">http://www.sierrawireless.com/sales</a>
Post:	Sierra Wireless 13811 Wireless Way Richmond, BC Canada V6V 3A4	
Technical Support:	<a href="mailto:support@sierrawireless.com">support@sierrawireless.com</a>	
RMA Support:	<a href="mailto:repairs@sierrawireless.com">repairs@sierrawireless.com</a>	
Fax:	1-604-231-1109	
Web:	<a href="http://www.sierrawireless.com/">http://www.sierrawireless.com/</a>	

Consult our website for up-to-date product descriptions, documentation, application notes, firmware upgrades, troubleshooting tips, and press releases: [www.sierrawireless.com](http://www.sierrawireless.com)

# Document History

Version	Date	Updates
1.0	April 23, 2014	Creation
1.1	April 25, 2014	Updated: <ul style="list-style-type: none"> <li>• 1.3 General Features</li> <li>• 1.9.2 Regulatory</li> </ul>
		Deleted 7.4 IC Regulations
2.0	July 08, 2014	Updated: <ul style="list-style-type: none"> <li>• Table 1 Supported Bands/Connectivity</li> <li>• Table 2 AirPrime HL8549 and HL8549-G Features</li> <li>• Table 6 Regulation Compliance</li> <li>• Table 7 Pad Definition</li> <li>• Table 9 Current Consumption (at nominal voltage, 3.7V)</li> <li>• Table 11 VGPIIO Electrical Characteristics</li> <li>• Table 16 GPIO Pin Description</li> <li>• 3.10 POWER ON Signal (PWR_ON)</li> <li>• Table 20 ADC Electrical Characteristics</li> <li>• Table 21 PWM Electrical Characteristics</li> <li>• 3.15 PCM</li> <li>• Table 27 SW Trace Pin Description</li> <li>• 3.19 PPS (HL8549-G Only)</li> <li>• Table 31 RF Performance</li> <li>• 5.1 Power-Up Sequence</li> <li>• 5.2 Module Switch-Off</li> <li>• 7 FCC Legal Information</li> </ul>
		Added: <ul style="list-style-type: none"> <li>• Band 19 support</li> <li>• Table 10 Current Consumption per Power Supply (VBATT_PA and VBATT)</li> <li>• 5.3 Emergency Power OFF</li> <li>• 5.5 Power Supply Design</li> </ul>
3.0	July 31, 2014	Updated: <ul style="list-style-type: none"> <li>• 1.1 Common Flexible Form Factor (CF<sup>3</sup>)</li> <li>• Table 3 GNSS Capabilities</li> <li>• 3.22 GNSS Interface</li> <li>• Table 37 Ordering Information</li> </ul>

# >> Contents

<b>1. INTRODUCTION .....</b>	<b>9</b>
1.1. Common Flexible Form Factor (CF <sup>3</sup> ) .....	9
1.2. Physical Dimensions .....	10
1.3. General Features.....	10
1.4. GNSS Features .....	13
1.5. Architecture .....	13
1.6. Interfaces.....	14
1.7. Connection Interface .....	14
1.8. ESD .....	15
1.9. Environmental & Certifications .....	15
1.9.1. Environmental Specifications .....	15
1.9.2. Regulatory .....	16
1.9.3. RoHS Directive Compliant .....	17
1.9.4. Disposing of the Product.....	17
1.9.5. References.....	17
<b>2. PAD DEFINITION .....</b>	<b>18</b>
2.1. Pin Configuration (Top View, Through Module) .....	22
<b>3. DETAILED INTERFACE SPECIFICATIONS .....</b>	<b>23</b>
3.1. Power Supply .....	23
3.2. Current Consumption .....	23
3.3. VGPIO .....	25
3.4. BAT_RTC .....	25
3.5. SIM Interface .....	25
3.5.1. UIM1_DET.....	26
3.6. USB .....	26
3.7. Electrical Information for Digital I/O.....	26
3.8. General Purpose Input/Output (GPIO) .....	27
3.9. Main Serial Link (UART1).....	28
3.10. POWER ON Signal (PWR_ON) .....	28
3.11. Reset Signal (RESET).....	29
3.12. ADC .....	30
3.13. PWM.....	30
3.13.1. Electrical Characteristics.....	30
3.13.2. Pin Description .....	31
3.13.3. Application.....	31
3.14. Clock Interface.....	31
3.15. PCM.....	32

---

3.16.	I <sup>2</sup> C Interface.....	33
3.17.	HSIC .....	33
3.18.	Debug Interfaces .....	34
3.18.1.	Debug Port .....	34
3.18.2.	JTAG .....	34
3.19.	PPS (HL8549-G Only) .....	35
3.20.	EXT_LNA_GPS_EN (HL8549-G only) .....	35
3.21.	RF Interface.....	35
3.21.1.	RF Connection .....	35
3.21.2.	RF Performances .....	36
3.21.3.	TX Burst Indicator (2G_TX_ON) .....	36
3.22.	GNSS Interface .....	37
3.22.1.	GNSS Performances.....	37
3.22.2.	GNSS Antenna Interface.....	38
3.22.3.	GNSS Antenna Recommendations .....	38
<b>4.</b>	<b>MECHANICAL DRAWINGS .....</b>	<b>40</b>
<b>5.</b>	<b>DESIGN GUIDELINES .....</b>	<b>42</b>
5.1.	Power-Up Sequence .....	42
5.2.	Module Switch-Off .....	42
5.3.	Emergency Power OFF .....	43
5.4.	Sleep Mode Management .....	43
5.4.1.	Using UART .....	43
5.4.2.	Using USB.....	44
5.5.	Power Supply Design .....	44
5.6.	ESD Guidelines for SIM Card.....	44
5.7.	ESD Guidelines for USB.....	45
5.8.	Dual SIM Application .....	45
5.9.	Radio Integration .....	46
5.9.1.	GSM Antenna Integration with Antenna Detection Circuitry .....	46
5.9.2.	GNSS Active Antenna Integration.....	46
<b>6.</b>	<b>X-RAY EXPOSURE .....</b>	<b>47</b>
<b>7.</b>	<b>FCC LEGAL INFORMATION .....</b>	<b>48</b>
7.1.	IC Regulations .....	49
<b>8.</b>	<b>ORDERING INFORMATION .....</b>	<b>51</b>
<b>9.</b>	<b>TERMS AND ABBREVIATIONS .....</b>	<b>52</b>



## List of Figures

Figure 1.	AirPrime HL8549 and HL8549-G Architecture Overview (TBC) .....	13
Figure 2.	AirPrime HL8549 and HL8549-G Mechanical Overview .....	14
Figure 3.	Pin Configuration .....	22
Figure 4.	PWR_ON Assertion Time.....	29
Figure 5.	Relative Timing for the PWM Output.....	30
Figure 6.	Example of an LED Driven by either the PWM1 or PWM2 Output .....	31
Figure 7.	PCM Timing Waveform (TBC).....	33
Figure 8.	PPS Signal .....	35
Figure 9.	2G_TX_ON State during TX Burst .....	37
Figure 10.	AirPrime HL8549x Mechanical Drawing.....	40
Figure 11.	AirPrime HL8549x Footprint .....	41
Figure 12.	PWR_ON Sequence with VGPIO Information .....	42
Figure 13.	PWR_ON Sequence with $T_{\text{rampup}}$ .....	42
Figure 14.	Power OFF Sequence for PWR_ON, VGPIO .....	43
Figure 15.	Voltage Limiter Example .....	44
Figure 16.	EMC and ESD Components Close to the SIM.....	44
Figure 17.	ESD Protection for USB .....	45
Figure 18.	Reference Design for Dual SIM Application .....	45
Figure 19.	GSM Antenna Connection with Antenna Detection .....	46
Figure 20.	GNSS Application with Active Antenna.....	46



# List of Tables

Table 1.	Supported Bands/Connectivity .....	9
Table 2.	AirPrime HL8549 and HL8549-G Features .....	10
Table 3.	GNSS Capabilities .....	13
Table 4.	ESD Specifications .....	15
Table 5.	AirPrime HL8549 and HL8549-G Environmental Specifications .....	15
Table 6.	Regulation Compliance .....	16
Table 7.	Pad Definition .....	18
Table 8.	Power Supply .....	23
Table 9.	Current Consumption (at nominal voltage, 3.7V) .....	23
Table 10.	Current Consumption per Power Supply (VBATT_PA and VBATT) .....	24
Table 11.	VGPIIO Electrical Characteristics .....	25
Table 12.	BAT_RTC Electrical Characteristics .....	25
Table 13.	Electrical Characteristics of UIM1 .....	26
Table 14.	USB Pin Description .....	26
Table 15.	Digital I/O Electrical Characteristics .....	27
Table 16.	GPIO Pin Description .....	27
Table 17.	UART1 Pin Description .....	28
Table 18.	PWR_ON Electrical Characteristics .....	29
Table 19.	RESET Electrical Characteristics .....	29
Table 20.	ADC Electrical Characteristics .....	30
Table 21.	PWM Electrical Characteristics .....	31
Table 22.	PWM Pin Description .....	31
Table 23.	Clock Interface Pin Description .....	32
Table 24.	Digital Audio Electrical Characteristics .....	32
Table 25.	I <sup>2</sup> C Pin Description .....	33
Table 26.	HSIC Pin Description .....	33
Table 27.	SW Trace Pin Description .....	34
Table 28.	JTAG Pin Description .....	34
Table 29.	PPS Electrical Characteristics .....	35
Table 30.	RF Connection .....	35
Table 31.	RF Performance .....	36
Table 32.	Burst Indicator States .....	36
Table 33.	TX Burst Characteristics .....	36
Table 34.	GNSS Interface Specifications .....	37
Table 35.	GNSS Antenna Specifications .....	38
Table 36.	GNSS Antenna Recommendations .....	38
Table 37.	Ordering Information .....	51



# 1. Introduction

This document is the Product Technical Specification for the AirPrime HL8549 and HL8549-G Embedded Modules. It defines the high level product features and illustrates the interfaces for these features. This document is intended to cover the hardware aspects of the product series, including electrical and mechanical.

The AirPrime HL8549 and HL8549-G belong to the AirPrime HL Series from Essential Connectivity Module family. These are industrial grade Embedded Wireless Modules that provides voice and data connectivity on GPRS, EDGE, WCDMA, HSDPA and HSUPA networks (as listed in Table 1 Supported Bands/Connectivity). On top of this, the HL8549-G also provides GNSS functionality.

The HL8549 and HL8549-G support a large variety of interface like Digital Audio and Dual SIM Single Standby to provide customers with the highest level of flexibility in implementing high-end solutions.

Table 1. Supported Bands/Connectivity

RF Band	Transmit band (Tx)	Receive band (Rx)	Maximum Output Power
UMTS B1	1922 to 1978 MHz	2112 to 2168 MHz	23 dBm (+/- 2dBm) Class 3bis
UMTS B2	1852 to 1908 MHz	1932 to 1988 MHz	23 dBm (+/- 2dBm) Class 3bis
UMTS B5	826 to 847 MHz	871 to 892 MHz	23 dBm (+/- 2dBm) Class 3bis
UMTS B6	832 to 838 MHz	877 to 883 MHz	23 dBm (+/- 2dBm) Class 3bis
UMTS B8	882 to 913 MHz	927 to 958 MHz	23 dBm (+/- 2dBm) Class 3bis
UMTS B19	832.4 to 842.6 MHz	877.4 to 887.6 MHz	
GSM 850	824 to 849 MHz	869 to 894 MHz	2 Watts GSM, GPRS and EDGE
E-GSM 900	880 to 915 MHz	925 to 960 MHz	2 Watts GSM, GPRS and EDGE
DCS 1800	1710 to 1785 MHz	1805 to 1880 MHz	1 Watt GSM, GPRS and EDGE
PCS 1900	1850 to 1910 MHz	1930 to 1990 MHz	1 Watt GSM, GPRS and EDGE
GPS	--	1575.42 ± 20 MHz	--
GLONASS	--	1597.5 to 1605.8 MHz	--

## 1.1. Common Flexible Form Factor (CF<sup>3</sup>)

The AirPrime HL8549 and HL8549-G belong to the Common Flexible Form Factor (CF<sup>3</sup>) family of modules. This family consists of a series of WWAN modules that share the same mechanical dimensions (same width and length with varying thicknesses) and footprint. The CF<sup>3</sup> form factor provides a unique solution to a series of problems faced commonly in the WWAN module space as it:

- Accommodates multiple radio technologies (from 2G to LTE advanced) and band groupings
- Supports bit-pipe (Essential Module Series) and value add (Smart Module Series) solutions
- Offers electrical and functional compatibility

## 1.2. Physical Dimensions

The AirPrime HL8549 and HL8549-G modules are compact, robust, fully shielded modules with the following dimensions:

- Length: 25 mm
- Width: 24 mm
- Thickness: 2.5 mm
- Weight: 3.5 g

---

*Note: Dimensions specified above are typical values.*

---

## 1.3. General Features

The table below summarizes the AirPrime HL8549 and HL8549-G features.

**Table 2. AirPrime HL8549 and HL8549-G Features**

Feature	Description
Physical	<ul style="list-style-type: none"> <li>• Small form factor (146-pin solderable LGA pad) – 25mm x 24mm x 2.5mm (nominal)</li> <li>• Complete body shielding</li> <li>• RF connection pads – RF primary and GNSS interface</li> <li>• Baseband signals connection</li> </ul>
Electrical	Single or double supply voltage (VBATT and VBATT_PA) – 3.2V – 4.5V
RF	<ul style="list-style-type: none"> <li>• Quad-band GSM / GPRS / EDGE (850 MHz, 900 MHz, 1800 MHz, 1900 MHz)</li> <li>• Hexa-band UMTS WCDMA FDD (800 MHz (B19), 850 MHz(B5/B6), 900MHz(B8), 1900 MHz(B2), 2100MHz(B1))</li> <li>• GPS (1575.42 MHz), GLONASS (1602MHz)</li> </ul>
Audio interface	<ul style="list-style-type: none"> <li>• Digital interface only</li> <li>• Supports Enhanced Full Rate (EFR), Full Rate (FR), Half Rate (HR), and both Narrow-Band and Wide-band Adaptive Multirate (AMR-NB and AMR-WB) vocoders</li> <li>• MO and MT calling</li> <li>• Echo cancellation and noise reduction</li> <li>• Emergency calls (112, 110, 911, etc.)</li> <li>• Incoming call notification</li> <li>• DTMF generation</li> </ul>
SIM interface	<ul style="list-style-type: none"> <li>• Dual SIM Single Standby with fast network switching capability</li> <li>• 1.8V/3V support</li> <li>• SIM extraction / hot plug detection</li> <li>• SIM/USIM support</li> <li>• Conforms with ETSI UICC Specifications</li> <li>• Supports SIM application tool kit with proactive SIM commands</li> </ul>

Feature	Description
Application interface	<ul style="list-style-type: none"> <li>• NDIS NIC interface support (Windows XP, Windows 7, Windows 8, Windows CE, Linux)</li> <li>• Multiple non-multiplexed USB channel support</li> <li>• Dial-up networking</li> <li>• USB selective suspend to maximize power savings</li> <li>• CMUX multiplexing over UART</li> <li>• AT command interface – 3GPP 27.007 standard, plus proprietary extended AT commands</li> </ul>
Protocol Stack	<p>Dual-mode UMTS (WCDMA) / HSDPA / HSUPA / EDGE / GPRS / GSM operation</p> <ul style="list-style-type: none"> <li>• GSM/GPRS/EDGE <ul style="list-style-type: none"> <li>▪ GPRS/EDGE – Class 33 (296 kbits downlink and 236.8 kbits uplink)</li> <li>▪ CSD (Circuit-switched data bearers)</li> <li>▪ Release 4 GERAN Feature Package 1</li> <li>▪ SAIC / DARP Phase 1</li> <li>▪ Latency Reduction</li> <li>▪ Repeated FACCH and Repeated SACCH</li> <li>▪ A-GPS support</li> <li>▪ GPRS ROHC</li> <li>▪ Enhanced Operator Name String (EONS)</li> <li>▪ Enhanced Network Selection (ENS)</li> </ul> </li> <li>• WCDMA <ul style="list-style-type: none"> <li>▪ 3GPP WCDMA FDD Multimode Type II UE Protocol Stack</li> <li>▪ Configurable for data classes up to 384 kBit/s</li> <li>▪ Inter-RAT Handover and Cell Reselection</li> <li>▪ Supports two types of Compressed Mode</li> <li>▪ Network Assisted Cell Change from UTRAN to GERAN and GERAN to UTRAN</li> <li>▪ A-GPS support</li> <li>▪ CSD (Circuit-switched data bearers) over WCDMA (transparent/non transparent up to 64 kBit/s; Support for Video Telephony)</li> </ul> </li> <li>• HSDPA (High Speed Downlink Packet Access) <ul style="list-style-type: none"> <li>▪ Compliant with 3GPP Release 5</li> <li>▪ HSDPA Category 8 data rate – 7.2 Mbps (peak rate)</li> <li>▪ IPv6 support</li> </ul> </li> <li>• HSUPA (High Speed Uplink Packet Access) <ul style="list-style-type: none"> <li>▪ Compliant with 3GPP Release 6</li> <li>▪ HSUPA Category 6 data rate - 5.76 Mbps (peak rate)</li> <li>▪ Robust Header Compression (RoHC)</li> <li>▪ Fractional DPCH</li> </ul> </li> </ul>
SMS	<ul style="list-style-type: none"> <li>• SMS MO and MT</li> <li>• CS and PS support</li> <li>• SMS saving to SIM card or ME storage</li> <li>• SMS reading from SIM card or ME storage</li> <li>• SMS sorting</li> <li>• SMS concatenation</li> <li>• SMS Status Report</li> <li>• SMS replacement support</li> <li>• SMS storing rules (support of <b>AT+CNMI</b>, <b>AT+CNMA</b>)</li> </ul>

Feature	Description
Supplementary Services	<ul style="list-style-type: none"> <li>• Call Barring</li> <li>• Call Forwarding</li> <li>• Call Hold</li> <li>• Caller ID</li> <li>• Call Waiting</li> <li>• Multi-party service</li> <li>• USSD</li> <li>• Automatic answer</li> </ul>
GNSS*	<p>Provides:</p> <ul style="list-style-type: none"> <li>• Standalone GNSS functionality</li> <li>• GPS and GLONASS support</li> <li>• A-GPS features</li> <li>• NMEA support</li> </ul> <hr style="border: 1px solid red;"/> <p><i>Note:</i> GNSS specifications are preliminary targets that are subject to change without notice. Actual GNSS functionality is dependent on the firmware version, and on module configuration.</p>
Connectivity	<ul style="list-style-type: none"> <li>• Multiple (up to 20) cellular packet data profiles</li> <li>• Sleep mode for minimum idle power draw</li> <li>• Automatic GPRS attach at power-up</li> <li>• GPRS detach</li> <li>• Mobile-originated PDP context activation / deactivation</li> <li>• Support QoS profile <ul style="list-style-type: none"> <li>▪ Release 97 – Precedence Class, Reliability Class, Delay Class, Peak Throughput, Mean Throughput</li> <li>▪ Release 99 QoS negotiation – Background, Interactive, and Streaming</li> </ul> </li> <li>• Static and Dynamic IP address. The network may assign a fixed IP address or dynamically assign one using DHCP (Dynamic Host Configuration Protocol).</li> <li>• Supports PAP and CHAP authentication protocols</li> <li>• PDP context type (IPv4, IPv6, IPv4v6). IP Packet Data Protocol context</li> <li>• RFC1144 TCP/IP header compression</li> <li>• Interaction with existing GSM services (MO/MT SMS voice calls) while: <ul style="list-style-type: none"> <li>▪ GPRS is attached, or</li> <li>▪ In a GPRS data session (class B GPRS suspend / resume procedures)</li> </ul> </li> </ul>
Environmental	<p>Operating temperature ranges (industrial grade):</p> <ul style="list-style-type: none"> <li>• Class A: -30°C to +70°C</li> <li>• Class B: -40°C to +85°C</li> </ul>
RTC	Real Time Clock (RTC) with calendar and alarm
Temperature Sensor	<ul style="list-style-type: none"> <li>• Temperature monitoring</li> <li>• Alarms</li> </ul>

\* Only available on the AirPrime HL8549-G.



## 1.6. Interfaces

The AirPrime HL8549 and HL8549-G module provides the following interfaces and peripheral connectivity:

- 1 8-pins UART
- 1 I<sup>2</sup>C
- 1 HSIC
- Active Low RESET
- USB 2.0
- 1 Backup Battery Interface
- 2 System Clock Out
- Active Low POWER ON
- 1 1.8V/3V SIM
- 1 Digital Audio
- 2 ADC
- 1 JTAG Interface
- 2 PWM
- 12 GPIOs with 4 multiplexes
- 2G TX Burst Indicator
- GSM Antenna

In addition, the AirPrime HL8549-G module provides the following additional interfaces and peripheral connectivity:

- GNSS Antenna
- External GNSS LNA Enable/Disable
- Pulse Per Second

## 1.7. Connection Interface

The AirPrime HL8549 and HL8549-G module is an LGA form factor device. All electrical and mechanical connections are made through the 146 Land Grid Array (LGA) pads on the bottom side of the PCB.

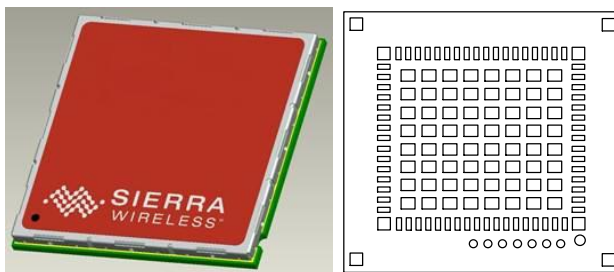


Figure 2. AirPrime HL8549 and HL8549-G Mechanical Overview

The 146 pads have the following distribution:

- 66 inner signal pads, 1x0.5mm, pitch 0.8mm
- 1 reference test point (Ground), 1.0mm diameter
- 7 test point (JTAG), 0.8mm diameter, 1.20mm pitch

- 64 inner ground pads, 1.0x1.0mm, pitch 1.825mm/1.475mm
- 4 inner corner ground pads, 1x1mm
- 4 outer corner ground pads, 1x0.9mm

## 1.8. ESD

Refer to the following table for ESD Specifications.

*Note: Information specified in the following table is preliminary and subject to change.*

Table 4. ESD Specifications

Category	Connection	Specification
Operational	RF ports	IEC-61000-4-2 — Level (Electrostatic Discharge Immunity Test)
Non-operational	Host connector interface	Unless otherwise specified: <ul style="list-style-type: none"> <li>• JESD22-A114 +/- 2kV Human Body Model</li> <li>• JESD22-A115 +/- 200V Machine Model</li> <li>• JESD22-C101C +/- 500V Charged Device Model</li> </ul>
Signals	SIM connector	ESD protection is highly recommended at the point where the USIM contacts are exposed, and for any other signals that would be subjected to ESD by the user.
	Other host signals	

## 1.9. Environmental & Certifications

### 1.9.1. Environmental Specifications

The environmental specification for both operating and storage conditions are defined in the table below.

Table 5. AirPrime HL8549 and HL8549-G Environmental Specifications

Conditions	Range
Operating Class A	-30°C to +70°C
Operating Class B	-40°C to +85°C
Storage	-40°C to +85°C

Class A is defined as the operating temperature ranges that the device:

- Shall exhibit normal function during and after environmental exposure.
- Shall meet the minimum requirements of 3GPP or appropriate wireless standards.

Class B is defined as the operating temperature ranges that the device:

- Shall remain fully functional during and after environmental exposure
- Shall exhibit the ability to establish a voice, SMS or DATA call (emergency call) at all times even when one or more environmental constraint exceeds the specified tolerance.
- Unless otherwise stated, full performance should return to normal after the excessive constraint(s) have been removed.

## 1.9.2. Regulatory

The AirPrime HL8549 and HL8549-G are both compliant with the following regulations:

- R&TTE directive 1999/5/EC
- FCC
- ANATEL

These compliances will be reflected on the AirPrime HL8549 and HL8549-G labels when applicable.

**Table 6. Regulation Compliance**

Document	Current Version	Title
NAPRD.03	v5.18 or later	Overview of PCS Type certification review board (PTCRB) Mobile Equipment Type Certification and IMEI control
GCF-CC	v3.51.1 or later	GCF Conformance Certification Criteria
TS 51.010-1	V10.0.0 (2012-03)	3rd Generation Partnership Project; Technical Specification Group GSM/EDGE Radio Access Network; Digital cellular telecommunications system (Phase 2+); Mobile Station (MS) conformance specification; Part 1: Conformance specification
TS 51.010-2	V10.0.0 (2012-03)	3rd Generation Partnership Project; Technical Specification Group GSM/EDGE Radio Access Network; Mobile Station (MS) conformance specification; Part 2: Protocol Implementation Conformance Statement (PICS) proforma specification
EN 301511	V9.0.2 (2003-03)	Global System for Mobile Communications (GSM); Harmonized EN for Mobile Stations in the GSM 900 and GSM 1800 Bands Covering Essential Requirements Under Article 3.2 of the R&TTE Directive (1999/5/EC)
EN 301489-1	V1.9.2 (2011-09)	Electromagnetic compatibility and Radio spectrum Matters (ERM); ElectroMagnetic Compatibility (EMC) standard for radio equipment and services; Part 1: Common technical requirements
EN 301489-3	V1.4.1 (2002-08)	Electromagnetic compatibility and Radio spectrum Matters (ERM); ElectroMagnetic Compatibility (EMC) standard for radio equipment and services; Part 3: Specific conditions for Short-Range Devices (SRD) operating on frequencies between 9 kHz and 40 GHz
EN 301489-7	V1.3.1 (2005-11)	Electromagnetic Compatibility and Radio Spectrum Matters (ERM); ElectroMagnetic Compatibility (EMC) Standard for Radio Equipment and Services; Part 7: Specific Conditions for Mobile and Portable Radio and Ancillary Equipment of Digital Cellular Radio Telecommunications Systems (GSM and DCS)
EN 60950-1	NA	IEC 60950-1:2005/A1:2009 EN 60950-1:2006/A11:2009/A1:2010/A12:2011/AC :2011 Information technology equipment – safety- and general requirements
EN 300440-1	v1.6.1 (2012-08)	Electromagnetic compatibility and Radio spectrum Matters (ERM); Short range devices; Radio equipment to be used in the 1 GHz to 40 GHz frequency range; Part 1: Technical characteristics and test methods
EN 300440-2	V1.4.1 (2012-08)	Electromagnetic compatibility and Radio spectrum Matters (ERM); Short range devices; Radio equipment to be used in the 1 GHz to 40 GHz frequency range; Part 2: Harmonized EN under article 3.2 of the R&TTE Directive
FCC Part 22H	NA	Cellular Radiotelephone Service; Subpart H: Cellular Radiotelephone Service



Document	Current Version	Title
FCC Part 24E	NA	Personal Communications Service; Subpart E: Broadband PCS.
RSS-132	Issue 2:2005	Cellular telephones employing new technologies operating in the 824-849 MHz and 869-894 MHz bands.
RSS-133	Issue 5:2009	2 GHz personal communications services
Decree 2338 of 07/10/1997 (ANATEL)	1997	Agência Nacional de Telecomunicações do Brazil.

### 1.9.3. RoHS Directive Compliant

The AirPrime HL8549 and HL8549-G module is compliant with RoHS Directive 2011/65/EU which sets limits for the use of certain restricted hazardous substances. This directive states that “from 1st July 2006, new electrical and electronic equipment put on the market does not contain lead, mercury, cadmium, hexavalent chromium, polybrominated biphenyls (PBB) or polybrominated diphenyl ethers (PBDE)”.

### 1.9.4. Disposing of the Product

This electronic product is subject to the EU Directive 2012/19/EU for Waste Electrical and Electronic Equipment (WEEE). As such, this product must not be disposed of at a municipal waste collection point. Please refer to local regulations for directions on how to dispose of this product in an environmental friendly manner.



### 1.9.5. References

- [1] AirPrime HL Series Customer Process Guidelines  
Reference Number: 4114330
- [2] AirPrime HL6 and HL8 Series AT Commands Interface Guide  
Reference Number: 4114680

## >> 2. Pad Definition

AirPrime HL8549 and HL8549-G pins are divided into 2 functional categories.

- **Core functions and associated pins** cover all the mandatory features for M2M connectivity and will be available by default across all CF<sup>3</sup> family of modules. These Core functions are always available and always at the same physical pin locations. A customer platform using only these functions and associated pins is guaranteed to be forward and/or backward compatible with the next generation of CF<sup>3</sup> modules.
- **Extension functions and associated pins** bring additional capabilities to the customer. Whenever an Extension function is available on a module, it is always at the same pin location.

Other pins marked as “not connected” or “reserved” should not be used.

Table 7. Pad Definition

Pin #	Signal Name	Function	I/O	Active Low/High	Power Supply Domain	Recommendation for Unused Pins	Type
1	GPIO1 / I2C_CLK	General purpose input/output/I <sup>2</sup> C Clock	I/O		1.8V	Left Open	Extension
2	UART1_RI	UART1 Ring indicator	O		1.8V	Left Open	Core
3	UART1_RTS	UART1 Request to send	I	L	1.8V	Connect to UART1_CTS	Core
4	UART1_CTS	UART1 Clear to send	O	L	1.8V	Connect to UART1_RTS	Core
5	UART1_TX	UART1 Transmit data	I		1.8V	Mandatory connection	Core
6	UART1_RX	UART1 Receive data	O		1.8V	Mandatory connection	Core
7	UART1_DTR	UART1 Data terminal ready	I	L	1.8V	Connect to UART1_DSR	Core
8	UART1_DCD	UART1 Data carrier detect/	O	L	1.8V	Left Open	Core
9	UART1_DSR	UART1 Data set ready	O	L	1.8V	Connect to UART1_DTR	Core
10	GPIO2	General purpose input/output	I/O		1.8V	Left Open	Core
11	RESET_IN	Input reset signal	I	L	1.8V	Left Open	Core

Pin #	Signal Name	Function	I/O	Active Low/High	Power Supply Domain	Recommendation for Unused Pins	Type
12	USB_D-	USB Data Negative (Low / Full Speed)	I/O		3.3V	Left Open	Extension
		USB Data Negative (High Speed)			0.38V		
13	USB_D+	USB Data Positive (Low / Full Speed)	I/O		3.3V	Left Open	Extension
		USB Data Positive (High Speed)			0.38V		
14	HSIC_DATA	High Speed Inter-Chip Data	I/O		1.2V	Left Open	Extension
15	HSIC_STRB	High Speed Inter-Chip Strobe	I/O		1.2V	Left Open	Extension
16	USB_VBUS	USB VBUS	I		5V	Left Open	Extension
17	NC	Not Connected (Reserved for future use)				Left Open	Not connected
18	NC	Not Connected (Reserved for future use)				Left Open	Not connected
19	NC	Not Connected (Reserved for future use)				Left Open	Not connected
20	NC	Not Connected (Reserved for future use)				Left Open	Not connected
21	BAT_RTC	Power supply for RTC backup	I/O		1.8V	Left Open	Extension
22	26M_CLKOUT	26MHz System Clock Output	O		1.8V	Left Open	Extension
23	32K_CLKOUT	32.768kHz System Clock Output	O		1.8V	Left Open	Extension
24	ADC1	Analog to digital conversion	I		1.2V	Left Open (TBC)	Extension
25	ADC0	Analog to digital conversion	I		1.2V	Left Open (TBC)	Extension
26	UIM1_VCC	1.8V/3V SIM1 Power supply	O		1.8V/3V	Mandatory connection	Core
27	UIM1_CLK	1.8V/3V SIM1 Clock	O		1.8V/3V	Mandatory connection	Core
28	UIM1_DATA	1.8V/3V SIM1 Data	I/O		1.8V/3V	Mandatory connection	Core
29	UIM1_RESET	1.8V/3V SIM1 Reset	O	L	1.8V/3V	Mandatory connection	Core
30	NC	Not Connected (Reserved for future use)				Left Open	Not connected
31	NC	Not Connected (Reserved for future use)				Left Open	Not connected
32	NC	Not Connected (Reserved for future use)				Left Open	Not connected
33	PCM_OUT	PCM data out	O		1.8V	Left Open	Extension
34	PCM_IN	PCM data in	I		1.8V	Left Open	Extension

Pin #	Signal Name	Function	I/O	Active Low/High	Power Supply Domain	Recommendation for Unused Pins	Type
35	PCM_SYNC	PCM sync out	I/O		1.8V	Left Open	Extension
36	PCM_CLK	PCM clock	I/O		1.8V	Left Open	Extension
37	GND	Ground	0V		0V	Mandatory connection	Core
38	RF_GPS	RF GNSS Input				Mandatory connection	Extension
39	GND	Ground	0V		0V	Mandatory connection	Core
40	GPIO7	General purpose input/output	I/O		1.8V	Left Open	Core
41	GPIO8	General purpose input/output	I/O		1.8V	Left Open	Core
42	PPS	GNSS Pulse Per Second	O		1.8V	Left Open	Extension
43	EXT_LNA_GPS_EN	External GNSS LNA enable	O	H	1.8V	Left Open	Extension
44	DEBUG_TX	Debug transmit data	O		1.8V	Left Open	Extension
45	VGPIO	GPIO voltage output	O		1.8V	Left Open	Core
46	GPIO6	General purpose input/output	I/O		1.8V	Left Open	Core
47	TP1	Test Point 1 0 - Download Mode Open - Normal Mode	I	L	1.8V	Left Open	Extension
48	GND	Ground			0V	Mandatory connection	Core
49	RF_MAIN	RF GSM Input/output				Mandatory connection	Core
50	GND	Ground			0V	Mandatory connection	Core
51	DEBUG_RX	Debug receive data	I		1.8V	Left Open	Extension
52	GPIO10	General purpose input/output	I/O		1.8V	Left Open	Extension
53	GPIO11	General purpose input/output	I/O		1.8V	Left Open	Extension
54	GPIO15	General purpose input/output	I/O		1.8V	Left Open	Extension
55	NC1	Reserved for future use				Left Open	Not connected
56	NC2	Reserved for future use				Left Open	Not connected
57	PWM1	Pulse Width Modulation	O		1.8V	Left Open	Extension

Pin #	Signal Name	Function	I/O	Active Low/High	Power Supply Domain	Recommendation for Unused Pins	Type
58	PWM2 / GPIO12	Pulse Width Modulation / General purpose input/output	I/O		1.8V	Left Open	Extension
59	PWR_ON	Active Low Power On control signal	I	L	1.8V	Mandatory connection	Core
60	2G_TX_ON	2G TX burst indicator	O	H	1.8V	Left Open	Extension
61	VBATT_PA	Power supply (refer to section 3.1 Power Supply for more information)	I		3.2V (min) 3.7V (typ) 4.5V (max)	Mandatory connection	Core
62	VBATT_PA	Power supply (refer to section 3.1 Power Supply for more information)	I		3.2V (min) 3.7V (typ) 4.5V (max)	Mandatory connection	Core
63	VBATT	Power supply	I		3.2V (min) 3.7V (typ) 4.5V (max)	Mandatory connection	Core
64	GPIO3 / UIM1_DET	General purpose input/output / UIM1 Detection	I/O	H	1.8V	Left Open	Core
65	GPIO4	General purpose input/output	I/O	H	1.8V	Left Open	Extension
66	GPIO5 / I2C_SDA	General purpose input/output/I <sup>2</sup> C Data	I/O		1.8V	Left Open	Extension
67-70	GND	Ground	GND		0V		Core
71 - 166	<i>Note: These pins are not available on the AirPrime HL8549 and HL8549-G modules.</i>						
167-234	GND	Ground	GND		0V		Core
235	GND	Ground	GND		0V		Not connected
236	JTAG_RESET	JTAG RESET	I	L	1.8V	Left Open	Extension
237	JTAG_TCK	JTAG Test Clock	I		1.8V	Left Open	Extension
238	JTAG_TDO	JTAG Test Data Output	O		1.8V	Left Open	Extension
239	JTAG_TMS	JTAG Test Mode Select	I		1.8V	Left Open	Extension
240	JTAG_TRST	JTAG Test Reset	I	L	1.8V	Left Open	Extension
241	JTAG_TDI	JTAG Test Data Input	I		1.8V	Left Open	Extension
242	JTAG_RTCK	JTAG Returned Test Clock	O		1.8V	Left Open	Extension



## 3. Detailed Interface Specifications

**Note:** If not specified, all electrical values are given for VBATT=3.7V and an operating temperature of 25°C.

For standard applications, VBATT and VBATT\_PA must be tied externally to the same power supply. For some specific applications, AirPrime HL8549 and HL8549-G module supports separate VBATT and VBATT\_PA connection if requirements below are fulfilled.

### 3.1. Power Supply

The AirPrime HL8549 and HL8549-G module is supplied through the VBATT signal with the following characteristics.

**Table 8. Power Supply**

Supply	Minimum	Typical	Maximum
VBATT voltage (V)	3.2 <sup>1</sup>	3.7	4.5
VBATT_PA voltage (V) Full Specification	3.2 <sup>1</sup>	3.7	4.5
VBATT_PA voltage (V) Extended Range	2.8	3.7	4.5

1 This value has to be guaranteed during the burst

**Note:** Load capacitance for VBATT is around 30µF ± 20% embedded inside the module.  
Load capacitance for VBATT\_PA is around 20µF ± 20% embedded inside the module.

### 3.2. Current Consumption

The following table lists the current consumption of the AirPrime HL8549 and HL8549-G at different conditions.

**Table 9. Current Consumption (at nominal voltage, 3.7V)**

Parameter	Typical	
Off mode	40 µA	
Sleep mode - GSM DRX2 (registered to the network)	GSM900	1.9 mA
	DCS1800	1.7 mA
	GSM850	1.7 mA
	PCS1900	1.7 mA
Sleep mode - GSM DRX9 (registered to the network)	GSM900	1.3 mA
	DCS1800	1.2 mA
	GSM850	1.2 mA
	PCS1900	1.1 mA
Sleep mode - WCDMA DRX6 (registered to the network)	Band 1	1.9 mA
	Band 2	1.9 mA
	Band 5 / 6	1.9 mA
	Band 8	1.9 mA

Parameter		Typical
Sleep mode - WCDMA DRX9 (registered to the network)	Band 1	1.2 mA
	Band 2	1.2 mA
	Band 5 / 6	1.2 mA
	Band 8	1.2 mA
WCDMA in communication mode (Voice Call)	Band 1	596 mA
	Band 2	555 mA
	Band 5 / 6	505 mA
	Band 8	536 mA
WCDMA in communication mode (HSDPA)	Band 1	670 mA
	Band 2	684 mA
	Band 5 / 6	558 mA
	Band 8	722 mA
WCDMA in communication mode (HSUPA)	Band 1	626 mA
	Band 2	547 mA
	Band 5 / 6	658 mA
	Band 8	683 mA
GSM in communication mode	GSM900 / GSM850 (PCL=5)	245 mA
	DCS / PCS (PCL=0)	170 mA
GPRS (2 TX,3 RX)	GSM900 / GSM850 (PCL=5)	452 mA
	DCS / PCS (PCL=0)	298 mA
Peak current consumption	GSM900 / GSM850	1.9 A
	DCS / PCS	1.8 A

Table 10. Current Consumption per Power Supply (VBATT\_PA and VBATT)

Parameters		Typical	
VBATT_PA	Average current GSM in communication mode	E-GSM 900 / GSM 850 (PCL=5)	194 mA
		DCS 1800/ PCS 1900 (PCL=0)	126 mA
	Average current GPRS (2 TX,3 RX)	E-GSM 900 / GSM 850 (PCL=5)	380 mA
		DCS 1800/ PCS 1900 (PCL=0)	236 mA
	Average current WCDMA in communication mode (Voice Call)	Band 1	475 mA
		Band 2	421 mA
		Band 5 / 6	390 mA
		Band 8	416 mA
VBATT	Average current GSM in communication mode	E-GSM 900 / GSM 850 (PCL=5)	41 mA
		DCS 1800/ PCS 1900 (PCL=0)	39 mA
	Average current GPRS (2 TX,3 RX)	E-GSM 900 / GSM 850 (PCL=5)	60 mA
		DCS 1800/ PCS 1900 (PCL=0)	58 mA
	Average current WCDMA in communication mode (Voice Call)	Band 1	128 mA
		Band 2	127 mA
		Band 5 / 6	118 mA
		Band 8	119 mA



### 3.3. VGPIO

The VGPIO output can be used to:

- Pull-up signals such as I/Os
- Supply the digital transistors driving LEDs
- Act as a voltage reference for the ADC interfaces, ADC0 and ADC1

The VGPIO output is available when the AirPrime HL8549 or HL8549-G module is switched ON.

Table 11. VGPIO Electrical Characteristics

Parameter	Min	Typ	Max	Remarks
Voltage level (V)	1.7	1.8	1.9	Both active mode and sleep mode
Current capability (mA)	-	-	50	Power Management support up to 50mA output.
Rise Time(ms)	-	-	1.5	Start-Up time from 0V

### 3.4. BAT\_RTC

The AirPrime HL8549 and HL8549-G module provides an input/output to connect a Real Time Clock power supply.

This pin is used as a back-up power supply for the internal Real Time Clock. The RTC is supported when VBATT is available but a back-up power supply is needed to save date and hour when VBATT is switched off.

If VBATT is available, the back-up battery can be charged by the internal 1.8V power supply regulator.

Table 12. BAT\_RTC Electrical Characteristics

Parameter	Minimum	Typical	Maximum	Unit
Input voltage	-	1.8	-	V
Input current consumption	-	2.5 (TBC)	-	μA
Output voltage	-5%	1.8	+5%	V
Max charging current (@VBATT=3.7V)	-	25	-	mA

### 3.5. SIM Interface

The AirPrime HL8549 and HL8549-G has one physical SIM interface, UIM1, which has optional support for dual SIM application with an external SIM switch. Refer to Section 5.8 Dual SIM Application for more information regarding dual SIM.

The UIM1 interface allows control of a 1.8V/3V SIM and is fully compliant with GSM 11.11 recommendations concerning SIM functions.

The four signals used by this interface are as follows:

- UIM1\_VCC: power supply
- UIM1\_CLK: clock
- UIM1\_DATA: I/O port

- UIM1\_RST: reset
- UIM1\_DET: SIM detection

Table 13. Electrical Characteristics of UIM1

Parameter	Min	Typ	Max	Remarks
UIM1 Interface Voltage (V) (VCC,CLK,IO,RST)	2.7	3.0	3.15	The appropriate output voltage is auto detected and selected by software.
	1.65	1.80	1.95	
UIM1 Detect	1.33	1.80	2.1	High active
UIM1_VCC Current (mA)	-	-	10	Max output current in sleep mode = 3 mA
UIM1_VCC Line Regulation (mV/V)	-	-	50	At Iout_Max
UIM1_VCC Power-up Setting Time ( $\mu$ s) from power down	-	10	-	

### 3.5.1. UIM1\_DET

UIM1\_DET is used to detect and notify the application about the insertion and removal of a SIM device in the SIM socket connected to the main SIM interface (UIM1). When a SIM is inserted, the state of UIM1\_DET transitions from logic 0 to logic 1. Inversely, when a SIM is removed, the state of UIM1\_DET transitions from logic 1 to logic 0.

Enabling or disabling this SIM detect feature can be done using the **AT+KSIMDET** command. For more information about this command, refer to document [2] AirPrime HL6 and HL8 Series AT Commands Interface Guide.

## 3.6. USB

The AirPrime HL8549 and HL8549-G have one USB interface.

Table 14. USB Pin Description

Pin Number	Signal Name	I/O	Function
12	USB_D-	I/O	USB Data Negative
13	USB_D+	I/O	USB Data Positive
16	USB_VBUS	I	USB VBUS

*Note:* When the 5V USB supply is not available, connect USB\_VBUS to VBAT\_BB to supply the USB interface.

## 3.7. Electrical Information for Digital I/O

The AirPrime HL8549 and HL8549-G supports three groups of digital interfaces with varying current drain limits. The following list enumerates these interface groupings and Table 15 Digital I/O Electrical Characteristics enumerates the electrical characteristics of each digital interface.

- Group 1 (8mA current drain limit)
  - UART
  - GPIOs
  - JTAG

- RESET
- PWM
- Group 2 (5mA current drain limit)
  - PCM
- Group 3 (1mA current drain limit)
  - I<sup>2</sup>C

Table 15. Digital I/O Electrical Characteristics

Parameter		Min	Typ	Max	Remarks
Input Current-High( $\mu$ A)		-	-	125	(TBD)
Input Current-Low( $\mu$ A)		-	-	125	(TBD)
Group 1	DC Output Current-High (mA)	-	-	8	
	DC Output Current-Low (mA)	-8	-	-	
Group 2	DC Output Current-High (mA)	-	-	5	
	DC Output Current-Low (mA)	-5	-	-	
Group 3	DC Output Current-High (mA)	-	-	1	
	DC Output Current-Low (mA)	-1	-	-	
Input Voltage-High(V)		1.33		2.1	
Input Voltage-Low(V)		-	-	0.34	
Output Voltage-High(V)		1.5	-	1.9	
Output Voltage-Low(V)		-	-	0.2	

### 3.8. General Purpose Input/Output (GPIO)

The AirPrime HL8549 and HL8549-G modules provide 12 GPIOs, 4 of which have multiplexes.

Table 16. GPIO Pin Description

Pin Number	Signal Name	Multiplex	I/O	Power Supply Domain
1	GPIO1	I2C_CLK	I/O	1.8V
10	GPIO2*		I/O	1.8V
40	GPIO7		I/O	1.8V
41	GPIO8		I/O	1.8V
46	GPIO6		I/O	1.8V
52	GPIO10		I/O	1.8V
53	GPIO11		I/O	1.8V
54	GPIO15		I/O	1.8V
58	GPIO12	PWM2	I/O	1.8V
64	GPIO3	UIM1_DET	I/O	1.8V
65	GPIO4		I/O	1.8V
66	GPIO5	I2C_SDA	I/O	1.8V

\* This pin can be used to trigger the module to wake up from Sleep Mode.

### 3.9. Main Serial Link (UART1)

The main serial link (UART1) is used for communication between the AirPrime HL8549 and HL8549-G module and a PC or host processor. It consists of a flexible 8-wire serial interface that complies with RS-232 interface.

The supported baud rates of the UART1 are 300, 1200, 2400, 4800, 9600, 19200, 38400, 57600, 115200, 230400, 460800, 500000, 750000, 921600, 1843200, 3000000, 3250000 and 6000000 bit/s.

The signals used by UART1 are as follows:

- TX data (UART1\_TX)
- RX data (UART1\_RX)
- Request To Send (UART1\_RTS)
- Clear To Send (UART1\_CTS)
- Data Terminal Ready (UART1\_DTR)
- Data Set Ready (UART1\_DSR)
- Data Carrier Detect (UART1\_DCD)
- Ring Indicator (UART1\_RI)

---

*Note:* Signal names are according to PC view.

---

UART1 pin description is summarized in the table below.

Table 17. UART1 Pin Description

Pin #	Signal Name*	I/O*	Description
2	UART1_RI	O	Signal incoming calls (voice and data), SMS, etc.
3	UART1_RTS	I	Wakes the module up when KSLEEP=1 is used
4	UART1_CTS	O	AirPrime HL8549 and HL8549-G is ready to receive AT commands
5	UART1_TX	I	Transmit data
6	UART1_RX	O	Receive data
7	UART1_DTR	I (active low)	Prevents the AirPrime HL8549 and HL8549-G from entering sleep mode, switches between data mode and command mode, and wakes the module up.
8	UART1_DCD	O	Signal data connection in progress
9	UART1_DSR	O	Signal UART interface is ON

\* According to PC view.

### 3.10. POWER ON Signal (PWR\_ON)

A low level signal has to be provided to switch the AirPrime HL8549 and HL8549-G module ON.

It is internally connected to the permanent 1.8V supply regulator inside the HL8549 and HL8549-G via a pull-up resistor. Once VBAT is supplied to the HL8549 and HL8549-G module, this 1.8V supply regulator will be enabled and so the PWR\_ON signal is by default at high level.

The PWR\_ON signal's characteristics are listed in the table below.

Table 18. PWR\_ON Electrical Characteristics

Parameter	Min	Typical	Max
Input Voltage-Low (V)		-	0.51
Input Voltage-High (V)	1.33	-	2.2
Power-up period from PWR_ON falling edge (ms)	2000	-	-
PWR_ON assertion time (ms)	25		

Note: As PWR\_ON is internally pulled up with 200kΩ, a simple open collector or open drain transistor must be used for ignition.

The software starts operating when the module is ON, but “AT Command Ready” will depend on whether UART or USB is used.

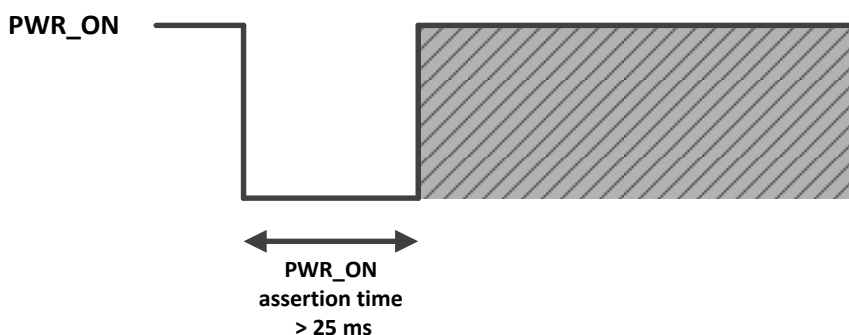


Figure 4. PWR\_ON Assertion Time

VGPIO is an output from the module that can be used to check if the module is active.

- When VGPIO = 0V, the module is OFF.
- When VGPIO = 1.8V, the module is ON (it can be in idle, communication or sleep mode)

Note: PWR\_ON cannot be used to power the module off. To power the module off, use AT command AT+CPOF.

### 3.11. Reset Signal (RESET)

To reset the module, a low level pulse must be sent on the RESET pin for 10ms. This action will immediately restart the AirPrime HL8549 and HL8549-G module with the PWR\_ON signal at low level. (If the PWR\_ON signal is at high level, the module will be powered off.) As RESET is internally pulled up, a simple open collector or open drain transistor can be used to control it.

The RESET signal will reset the registers of the CPU and reset the RAM memory as well, for the next power on.

Note: As RESET is referenced to the VGPIO domain (internally to the module), it is impossible to reset before the module starts or to try to use RESET as a way to start the module.

Another more costly solution would be to use MOS transistor to switch the power supply off and restart the power up procedure using the PWR\_ON input line.

Table 19. RESET Electrical Characteristics

Parameter	Min	Typical	Max
Input Voltage-Low (V)		-	0.51

Parameter	Min	Typical	Max
Input Voltage-High (V)	1.33	-	2.2
Power-up period (ms) from RESET falling edge*	2000	-	-

\* With the PWR\_ON Signal at low level

### 3.12. ADC

Two Analog to Digital Converter inputs, ADC0 and ADC1, are provided by the AirPrime HL8549 and HL8549-G module. These converters are 10-bit resolution ADCs ranging from 0 to 1.2V.

Typically, the ADCx input can be used to monitor external temperature. This is very useful for monitoring the application temperature and can be used as an indicator to safely power the application OFF in case of overheating (for Li-Ion batteries).

Both ADCs have the characteristics listed in the table below.

Table 20. ADC Electrical Characteristics

Parameter	Min	Typ	Max	Remarks
ADC Resolution (bits)	-	10	-	
Input Voltage Range (V)	0	-	1.2	General purpose input
Update rate per channel (kHz)	-	-	125	
Integral Nonlinearity (bits)	-	-	±2	LSB
Offset Error (bits)	-	-	±1	LSB
Gain	849	853	858	
Input Resistance (MΩ)	1	-	-	
Input Capacitance (pF)	-	1	-	

### 3.13. PWM

The AirPrime HL8549 and HL8549-G modules provide two PWM signals that can be used in conjunction with an external transistor for driving a vibrator, or a backlight LED.

Each PWM uses two 7-bit unsigned binary numbers: one for the output period and one for the pulse width or the duty cycle.

The relative timing for the PWM output is shown in the figure below.

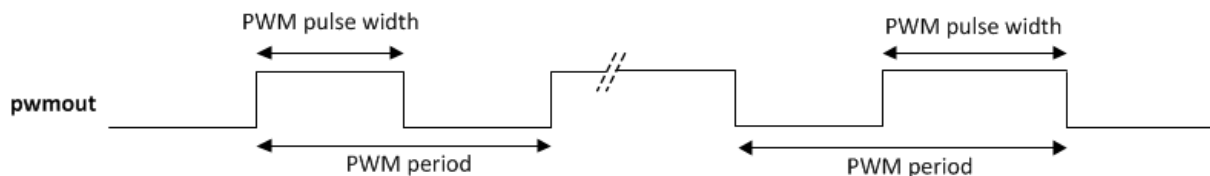


Figure 5. Relative Timing for the PWM Output

#### 3.13.1. Electrical Characteristics

The following table describes the electrical characteristics of the PWM interface.

Table 21. PWM Electrical Characteristics

Parameter	Conditions	Minimum	Typical	Maximum	Unit
V <sub>OH</sub>	High impedance load	--	1.8	-	V
V <sub>OL</sub>	-	-	-	0.2	V
I <sub>PEAK</sub>	-	-	-	8	mA
Frequency	-	25.6	-	1625	kHz
Duty cycle	-	1	-	99	%

### 3.13.2. Pin Description

The following table describes the pin description of the PWM interface.

Table 22. PWM Pin Description

Pin Number	Signal Name	I/O	I/O Type	Description
57	PWM1	I/O	1.8V	PWM output
58	PWM2	I/O	1.8V	PWM output multiplexed with GPIO12

### 3.13.3. Application

Both PWM1 and PWM2 signals can be used in conjunction with an external transistor for driving a vibrator, or a backlight LED.

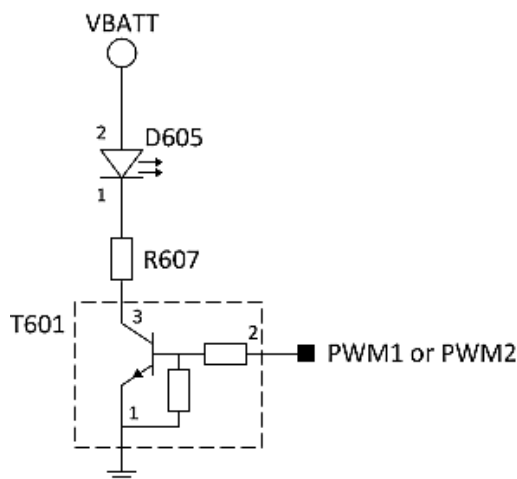


Figure 6. Example of an LED Driven by either the PWM1 or PWM2 Output

The value of R607 can be harmonized depending on the LED (D605) characteristics.

The recommended digital transistor to use for T601 is the DTC144EE from ROHM.

## 3.14. Clock Interface

The AirPrime HL8549 and HL8549-G modules support two digital clock interfaces.

The following table describes the pin description of the clock out interfaces.

Table 23. Clock Interface Pin Description

Pin Number	Signal Name	I/O	I/O Type	Description
22	26M_CLKOUT	O	1.8V	26MHz Digital Clock output
23	32K_CLKOUT	O	1.8V	32.768kHz Digital Clock output

Enabling or disabling the clock out feature can be done using AT commands. For more information about AT commands, refer to document [2] AirPrime HL6 and HL8 Series AT Commands Interface Guide.

## 3.15. PCM

The Digital Audio (PCM) Interface allows connectivity with standard audio peripherals. It can be used, for example, to connect an external audio codec.

The programmability of this interface allows addressing a large range of audio peripherals.

The signals used by the Digital Audio Interface are as follows:

- PCM\_SYNC: The frame synchronization signal delivers an 8 kHz frequency pulse that synchronizes the frame data in and the frame data out.
- PCM\_CLK: The frame bit clock signal controls data transfer with the audio peripheral.
- PCM\_OUT: The frame “data out” relies on the selected configuration mode.
- PCM\_IN: The frame “data in” relies on the selected configuration mode.

The PCM interface is a high speed full duplex interface that can be used to send and receive digital audio data to external audio ICs. The Digital Audio Interface also features the following:

- PCM master or slave
- 16 bits data word length, linear mode
- MSB first
- Configurable PCM bit clock rate on 256kHz, 384kHz or 512kHz
- Long frame sync

Refer to the following table for the electrical characteristics of the digital audio interface.

Table 24. Digital Audio Electrical Characteristics

Signal	Description	Minimum	Typical	Maximum	Unit
Tsync_low + Tsync_high	PCM-SYNC period		125		μs
Tsync_low	PCM-SYNC low time		124		μs
Tsync_high	PCM-SYNC high time		1		μs
TCLK-cycle	PCM-CLK period		3.9		μs
TIN-setup	PCM-IN setup time	59.6			ns
TIN-hold	PCM-IN hold time	12			ns
TOUT-delay	PCM-OUT delay time			21.6	ns
TSYNC-delay	PCM-SYNC output delay	-24		31.2	ns



The following figure shows the PCM timing waveform.

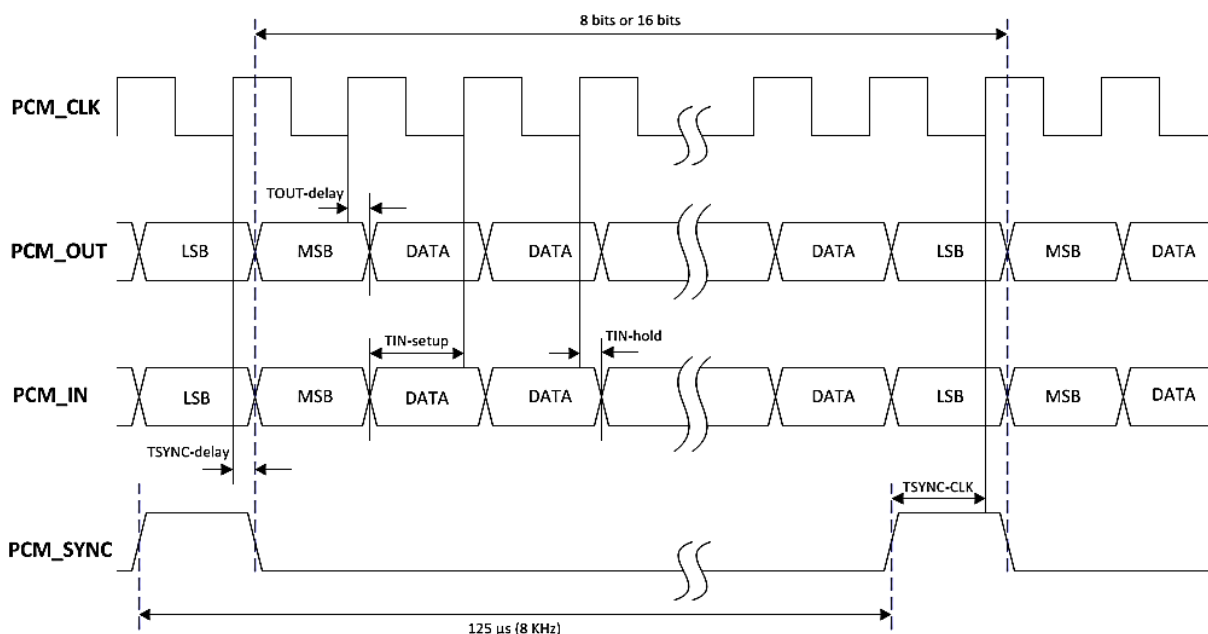


Figure 7. PCM Timing Waveform (TBC)

### 3.16. I<sup>2</sup>C Interface

NMEA frames can be output from USB, UART1 or through a dedicated serial port (I<sup>2</sup>C).

Table 25. I<sup>2</sup>C Pin Description

Pin Number	Signal Name	Function
1	I2C_CLK	I <sup>2</sup> C Clock
66	I2C_SDA	I <sup>2</sup> C Data

Note: I<sup>2</sup>C pins are multiplexed with GPIO features and are internally pulled to VGPIO with 4.7kΩ.

### 3.17. HSIC

The AirPrime HL8549 and HL8549-G embedded modules provide a standard high-speed inter-chip (HSIC) interface as slave.

Table 26. HSIC Pin Description

Pin Number	Signal Name	Function
14	HSIC_DATA	High Speed Inter-Chip Data
15	HSIC_STRB	High Speed Inter-Chip Strobe

## 3.18. Debug Interfaces

The AirPrime HL8549 and HL8549-G module provides 2 interfaces for a powerful debug system.

### 3.18.1. Debug Port

The AirPrime HL8549 and HL8549-G provides a 2-wire debug port interface, providing real-time instruction and data trace of the Modem Core.

Table 27. SW Trace Pin Description

Pin Number	Signal Name*	I/O*	Function
44	DEBUG_TX	O	Debug Transmit Data
51	DEBUG_RX	I	Debug Receive Data

\* According to module view.

*Note: It is strongly recommended to provide access through Test Points to this interface.*

### 3.18.2. JTAG

The JTAG interface provides debug access to the core of the HL8549 and HL8549-G. These JTAG signals are accessible through solder-able test points.

Table 28. JTAG Pin Description

Pin Number	Signal Name	Function
47	TP1	Test Point 1
236	JTAG_RESET	JTAG RESET
237	JTAG_TCK	JTAG Test Clock
238	JTAG_TDO	JTAG Test Data Output
239	JTAG_TMS	JTAG Test Mode Select
240	JTAG_TRST	JTAG Test Reset
241	JTAG_TDI	JTAG Test Data Input
242	JTAG_RTCK	JTAG Returned Test Clock

*Note: It is recommended to provide access through Test Points to this interface (for Failure Analysis debugging). All signals listed in table above shall be outputs on the customer board to allow JTAG debugging.*

## 3.19. PPS (HL8549-G Only)

The PPS signal is an output pulse related to GNSS receiver time.

Table 29. PPS Electrical Characteristics

Parameter	Min	Typ	Max	Test Conditions
Frequency		1Hz		
Pulse width (high)		250ms		
Pulse width (low)		750ms		
Synchronization to GNSS time			1 $\mu$ s	

Note: This output is available only when GNSS is in tracking mode.

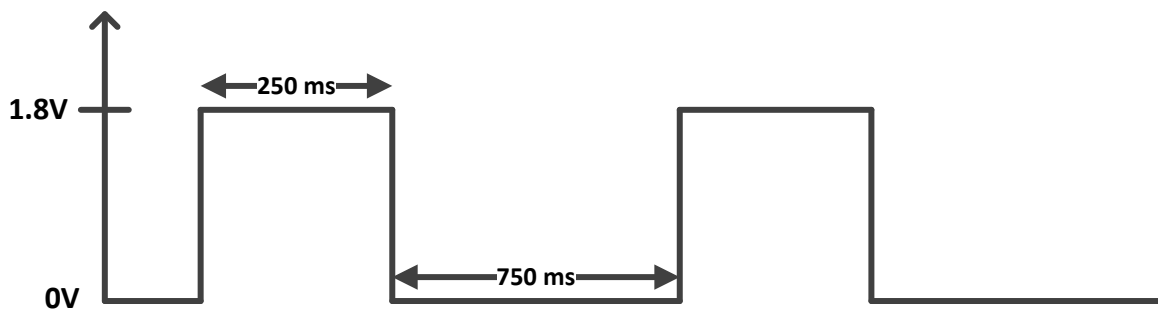


Figure 8. PPS Signal

## 3.20. EXT\_LNA\_GPS\_EN (HL8549-G only)

EXT\_LNA\_GPS\_EN ON indicates whether the GNSS receiver is active and can be used to enable an external LNA (or active antenna), especially during GNSS low power mode.

## 3.21. RF Interface

The GSM RF interface of the HL8549 and HL8549-G module allows the transmission of RF signals. This interface has a 50 $\Omega$  nominal impedance.

### 3.21.1. RF Connection

A 50 $\Omega$  stripline can be used to connect to standard RF connectors such as SMA, UFL, etc. for antenna connection.

Table 30. RF Connection

RF Signal	Impedance	VSWR Rx (max)	VSWR Tx (max)
RF_MAIN	50 $\Omega$	1.5:1	1.5:1

### 3.21.2. RF Performances

RF performances are compliant with the ETSI recommendation GSM 05.05.

Table 31. RF Performance

Frequency Band	Typical Sensitivity (dBm)
GSM850/EGSM	-109
DCS/PCS	-108
UMTS B1	-110
UMTS B2	-110
UMTS B5/6	-110
UMTS B8	-110

### 3.21.3. TX Burst Indicator (2G\_TX\_ON)

The AirPrime HL8549 and HL8549-G module provides a signal, 2G\_TX\_ON, for TX Burst indication. The 2G\_TX\_ON is a 1.8V signal and its status signal depends on the module transmitter state.

Refer to the following table for the status of the 2G\_TX\_ON signal depending on the embedded module's state.

Table 32. Burst Indicator States

Embedded Module State	2G_TX_ON
During TX burst	High
No TX	Low

During TX burst, there is a higher current drain from the VBATT\_PA power supply which causes a voltage drop. This voltage drop from VBATT\_PA is a good indication of a high current drain situation during TX burst.

The blinking frequency is about 217Hz.

The output logic high duration,  $T_{duration}$ , depends on the number of TX slots and is computed as follows:

$$T_{duration} = T_{advance} + (0.577ms \times \text{number of TX slots}) + T_{delay}$$

Table 33. TX Burst Characteristics

Parameter	Minimum	Typical	Maximum
Tadvance	30μs		
Tdelay	5μs		

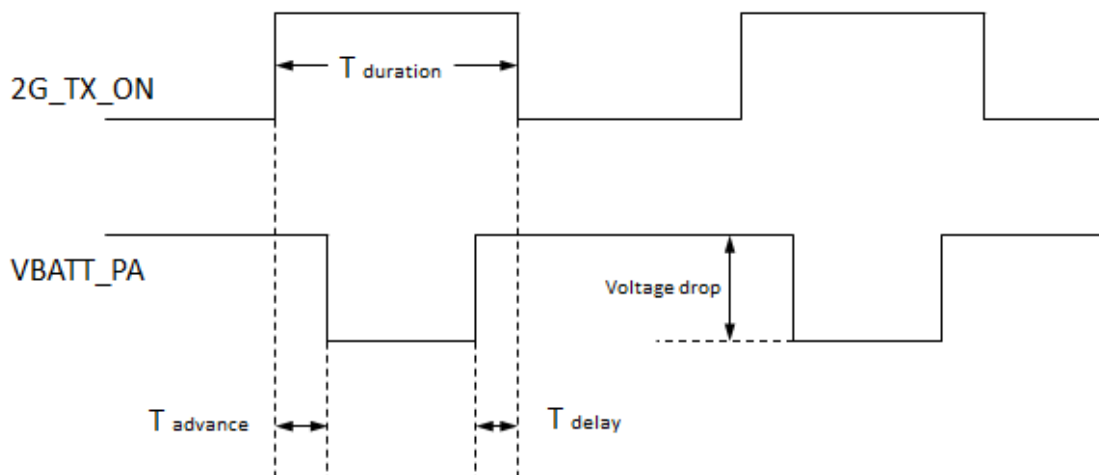


Figure 9. 2G\_TX\_ON State during TX Burst

### 3.22. GNSS Interface

The AirPrime HL8549-G embeds an integrated and high-sensitivity Global Navigation Satellite System (GNSS) solution.

Based on SiRFstarV™ from CSR, the HL8549-G combines GPS and GLONASS reception to improve navigation capabilities and position accuracy in obstructed view environments such as urban canyons. GNSS performances are improved by CW jammer and interference mitigation system and automated hardware blanking capabilities.

In addition, it supports Control Plane Assisted GPS and Secure User Plane Location (SUPL) protocol to reduce the time to first fix in the presence of assistance information from wireless networks.

The operation of GNSS is offloaded to a GNSS standalone solution to guaranty the modem resources availability for the best performances.

The GNSS implementation supports GPS L1 signal (1575.42 ± 20 MHz) and GLONASS L1 FDMA signals for frequency -7 to 6 (1597.5 – 1605.8 MHz), with 50Ω connection on RF\_GPS pad.

#### 3.22.1. GNSS Performances

Table 34. GNSS Interface Specifications

Test	Parameters	Typical Value	
Sensitivity	GPS Autonomous Acquisition without LNA (dBm)	-147	
	GPS Navigation without LNA (dBm)	-161	
	GLONASS Navigation (dBm)	TBD	
	GPS Tracking (dBm)	TBD	
	GLONASS Tracking (dBm)	TBD	
Autonomous Cold Start	Time To First Fix (s)	50%	TBD
		95%	TBD
	2D Position Error (m)	50%	TBD
		95%	TBD

Test	Parameters	Typical Value	
Autonomous Warm Start	Time To First Fix (s)	50%	TBD
		95%	TBD
	2D Position Error (m)	50%	TBD
		95%	TBD
Autonomous Hot Start	Time To First Fix (s)	50%	TBD
		95%	TBD
	2D Position Error (m)	50%	TBD
		95%	TBD
Aiding Warm Start	Time To First Fix (s)	50%	TBD
		95%	TBD
	2D Position Error (m)	50%	TBD
		95%	TBD

### 3.22.2. GNSS Antenna Interface

Specifications for the GNSS antenna interface are defined in the table below.

Table 35. GNSS Antenna Specifications

Characteristics	GNSS	
Frequency (MHz)	GPS L1	1575.42±20
	GLONASS L1 FDMA	1597.5-1605.8
RF Impedance (Ω)	50	
VSWR max	2:1	

The minimum isolation between GNSS and GSM antennas should be 20dB.

### 3.22.3. GNSS Antenna Recommendations

Both passive and active antennas are supported by the AirPrime HL8549-G module.

The table below describes the expected performance function as input signal power.

Table 36. GNSS Antenna Recommendations

GNSS Signal Level Description	Input Signal Power (dBm)	Expected Performances
Absolute maximum	-110	Maximum to input level
Good	>-134	Best performance in TTFF and position accuracy, allow to enter low power modes
Acceptable	>-147	Minimum input level to allow initial acquisition without aiding
Poor	<-147	No signal acquisition without aiding
Minimum usable signal	-161	Below this level, no fix with reasonable error

<b>GNSS Signal Level Description</b>	<b>Input Signal Power (dBm)</b>	<b>Expected Performances</b>
Minimum tracking level	-165	Minimum level to lock the signal for fast recovery when the signal returns to the minimum usable level

For passive antennas, the internal LNA should be set in high gain mode.

For active antennas, the internal LNA gain should be set to low gain if external net gain is higher than 16dB. If the external net gain is lower than 16dB, it is advised to set the internal LNA gain in high gain. In any case, the external net gain should not exceed 24dB.



# 4. Mechanical Drawings

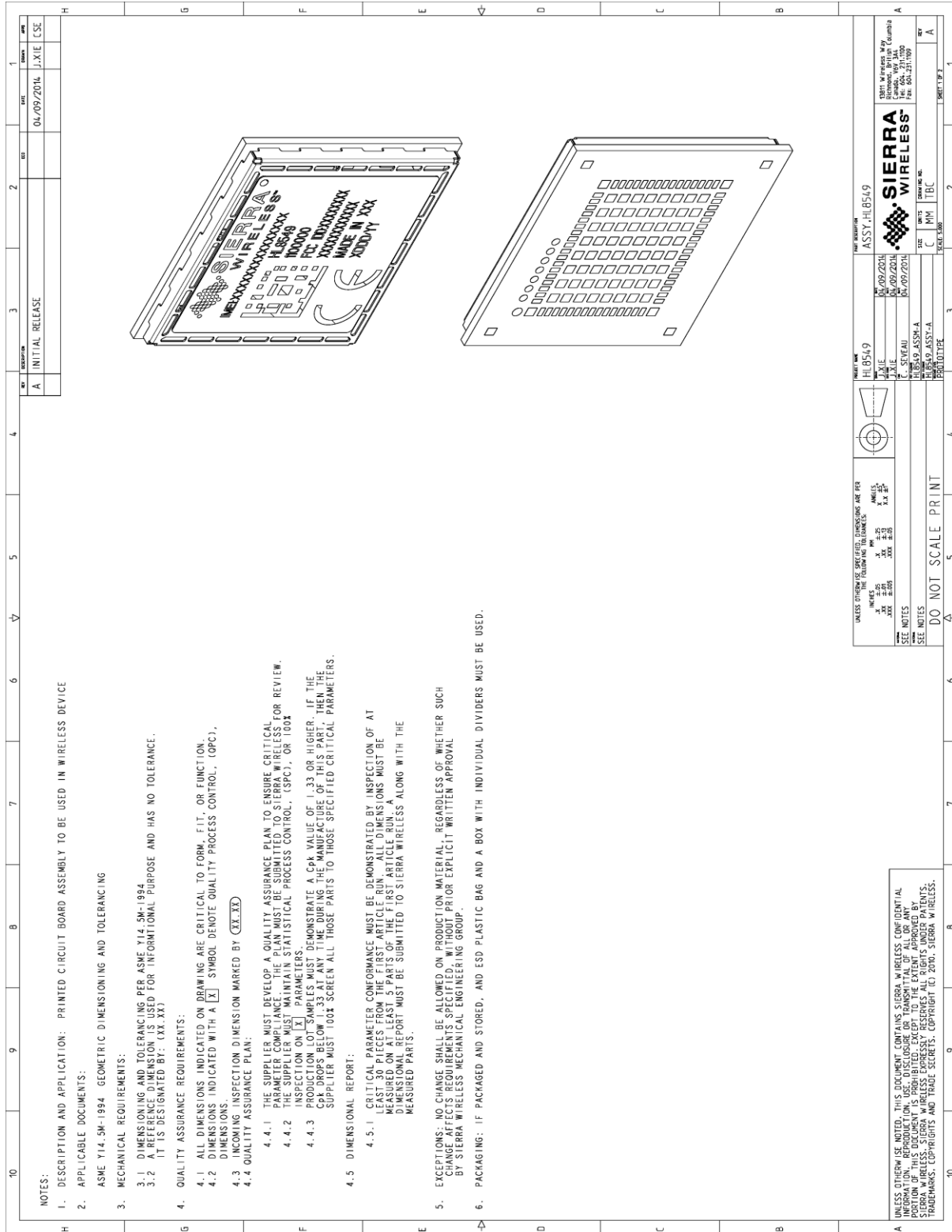


Figure 10. AirPrime HL8549x Mechanical Drawing





## 5. Design Guidelines

### 5.1. Power-Up Sequence

Apply a LOW level logic to the PWR\_ON pin (pin 59); within 25ms, VGPIO will appear to be at 1.8V. Either a USB or UART1 interface could be used to send AT commands. Note that for USB connections, the time when AT commands can be sent will depend on the initialization time used for the USB connection with the USB host.

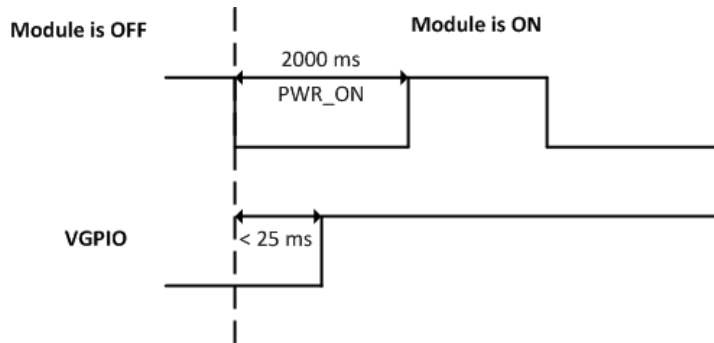


Figure 12. PWR\_ON Sequence with VGPIO Information

---

**Note:** As PWR\_ON is internally pulled up with 200k $\Omega$ , a simple open collector or open drain transistor must be used for ignition.

---

The PWR\_ON pin has the minimum assertion time requirement of 25ms, with LOW active. Once the valid power on trigger is detected, the PWR\_ON pin status can be left open.

VBATT has to ramp up within 32 ms to reach the value of 3.2V; otherwise, the module may not power up.

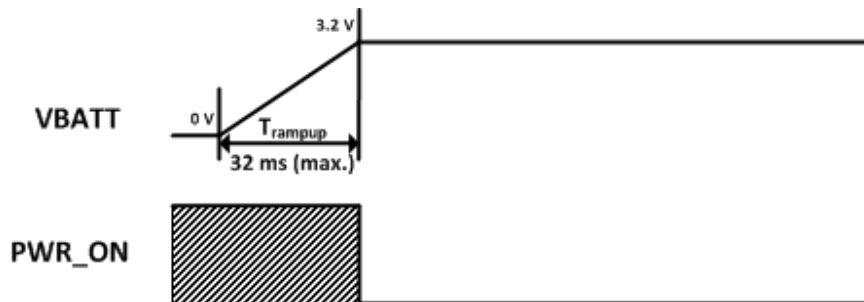


Figure 13. PWR\_ON Sequence with  $T_{rampup}$

### 5.2. Module Switch-Off

AT command `AT+CPOF` enables the user to properly switch the AirPrime HL8549 and HL8549-G module off. The PWR\_ON signal must be set to high (inactive) before the `AT+CPOF` command is sent.

---

**Note:** If the PWR\_ON signal is active (low level) when the `AT+CPOF` command is sent, the module will not power off.

---

If required, the module can be switched off by controlling the power supply. This can be used, for example, when the system freezes and no reset line is connected to the AirPrime HL8549 and HL8549-G module. In this case, the only way to get control over the module back is to switch off the power line.

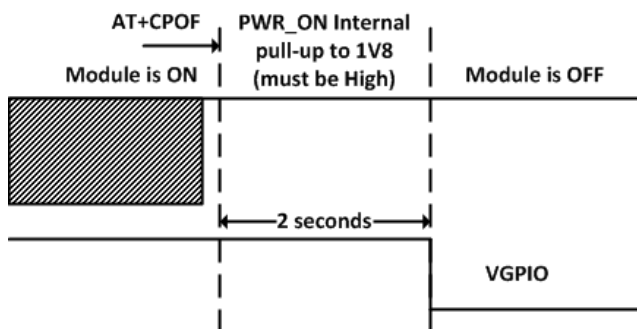


Figure 14. Power OFF Sequence for PWR\_ON, VGPIO

---

Note: PWR\_ON is internally pulled up by 200kΩ to 1.8V.

---

### 5.3. Emergency Power OFF

If required, the module can be switched off by controlling the RESET pin (pin 11). This must only be used in emergency situations if the system freezes (not responding to AT commands).

To perform an emergency power off, a low level pulse must be sent on the RESET pin for 10ms while the PWR\_ON signal is inactive (high level). This action will immediately shut the HL8549x module down and the registers of the CPU and RAM memory will be reset for the next power on.

### 5.4. Sleep Mode Management

#### 5.4.1. Using UART

AT command **AT+KSLEEP** enables sleep mode configuration.

**AT+KSLEEP=0:**

- The AirPrime HL8549 and HL8549-G module is active when DTR signal is active (low electrical level).
- When DTR is deactivated (high electrical level), the AirPrime HL8549 and HL8549-G module enters sleep mode after a while.
- On DTR activation (low electrical level), the AirPrime HL8549 and HL8549-G module wakes up.

**AT+KSLEEP=1:**

- The AirPrime HL8549 and HL8549-G module determines when it enters sleep mode (when no more tasks are running).
- “0x00” character on the serial link wakes the AirPrime HL8549 and HL8549-G module up.

**AT+KSLEEP=2:**

- The AirPrime HL8549 and HL8549-G module never enters sleep mode.

### 5.4.2. Using USB

Use `AT+KSLEEP=1` to allow the module to automatically enter sleep mode while the USB interface is in use.

## 5.5. Power Supply Design

The AirPrime HL8549x module should not be supplied with voltage over 4.5V even temporarily or however briefly.

If the system's main board power supply unit is unstable or if the system's main board is supplied with over 4.5V, even in the case of transient voltage presence on the circuit, the HL8549x's power amplifier and GPS chipset may be severely damaged.

To avoid such issues, add a voltage limiter to the module's power supply lines so that VBATT and VBATT\_PA signal pads will never receive a voltage surge over 4.5V. The voltage limiter can be as simple as a Zener diode with decoupling capacitors as shown in the diagram below.

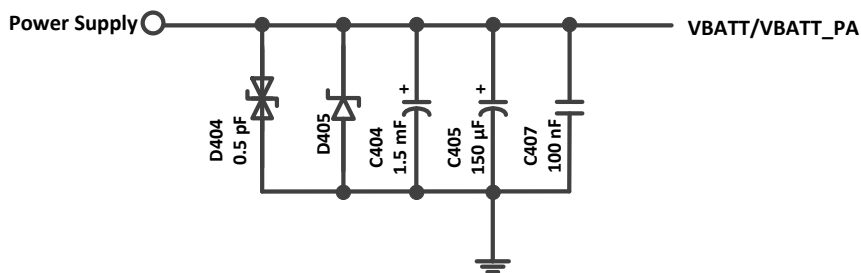


Figure 15. Voltage Limiter Example

## 5.6. ESD Guidelines for SIM Card

Decoupling capacitors must be added as close as possible to the SIM card connectors on UIM1\_CLK, UIM1\_RST, UIM1\_VCC and UIM1\_DATA signals to avoid EMC issues and to pass the SIM card type approval tests, according to the drawings below.

A typical schematic for hardware SIM detection is provided below.

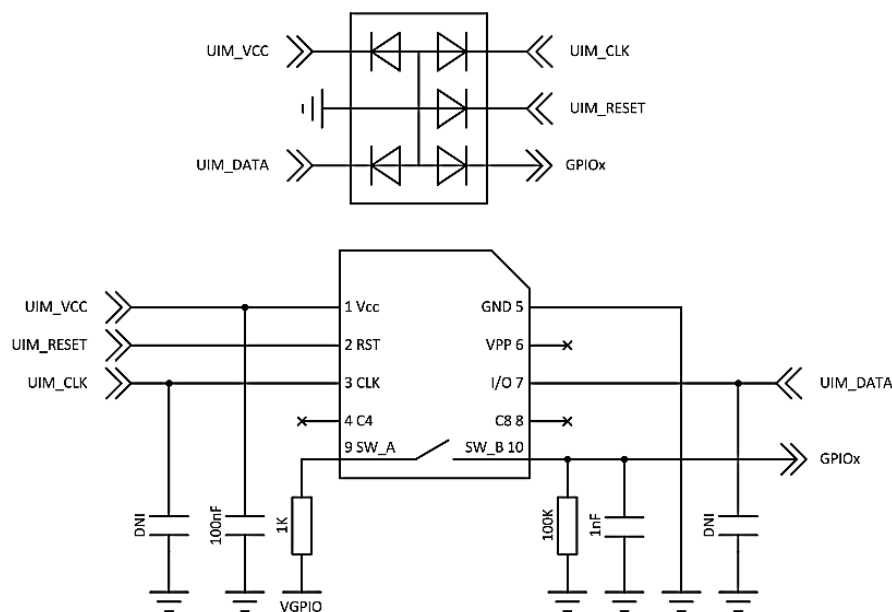


Figure 16. EMC and ESD Components Close to the SIM

## 5.7. ESD Guidelines for USB

When the USB interface is externally accessible, it is required to have ESD protection on the USB\_VBUS, USB\_D+ and USB\_D- signals.

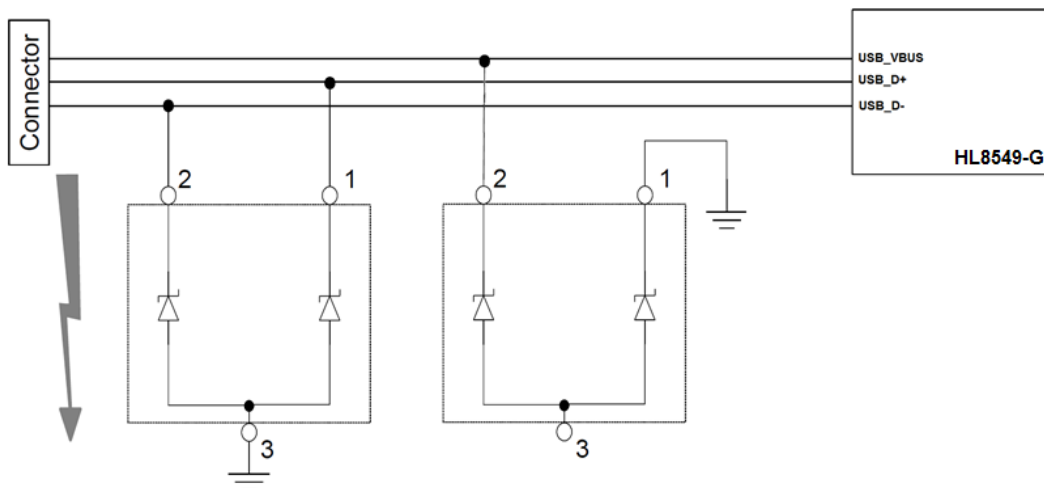


Figure 17. ESD Protection for USB

Note: It is not recommended to have an ESD diode with feedback path from USB\_VBUS to either USB\_D+ or USB\_D-.

## 5.8. Dual SIM Application

Using an external switch and GPIOs, the HL8549 and HL8549-G can support Dual SIM Single Standby with fast network switching. Refer to document [2] AirPrime HL6 and HL8 Series AT Commands Interface Guide for related AT commands.

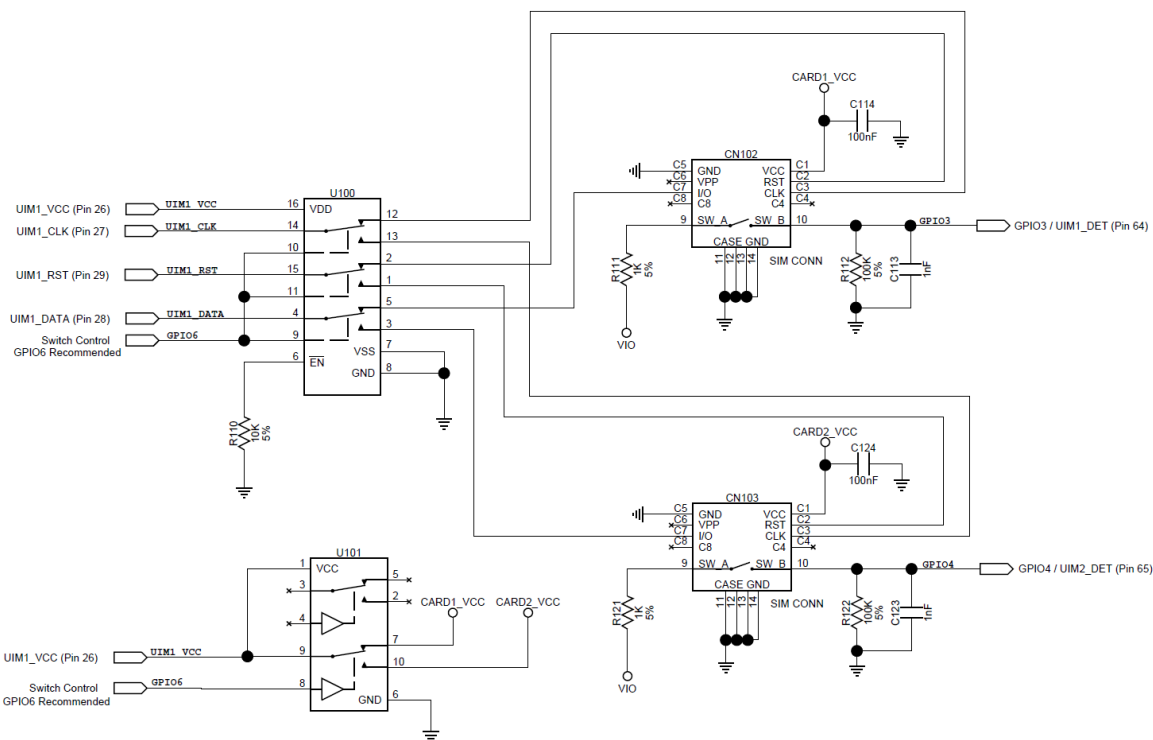


Figure 18. Reference Design for Dual SIM Application

## 5.9. Radio Integration

### 5.9.1. GSM Antenna Integration with Antenna Detection Circuitry

The AirPrime HL8549 and HL8549-G is equipped with external antennas. A 50Ω line matching circuit between the module, the customer’s board and the RF antennas is required, for GSM and GPS feed path, as shown in the example below.

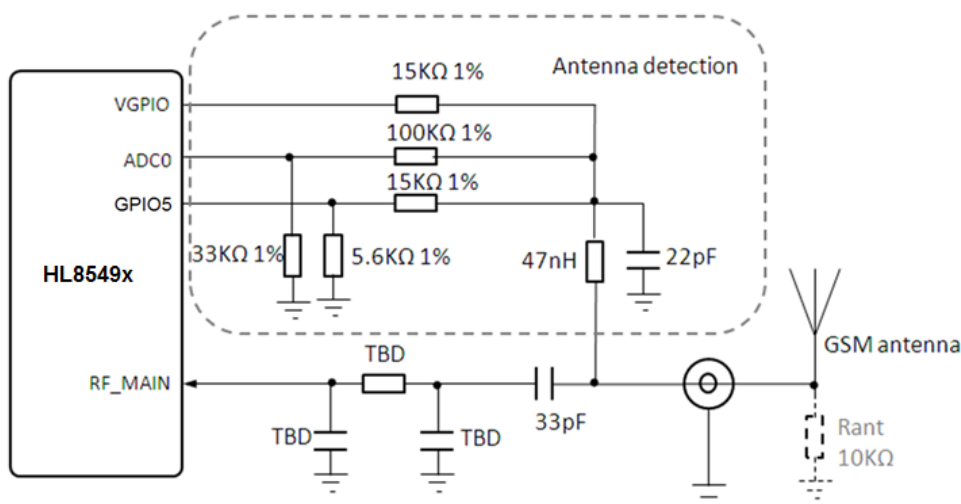


Figure 19. GSM Antenna Connection with Antenna Detection

**Note:** Antenna detection circuit is optional. Rant is the equivalent DC terminating resistor of the antenna. Rant should be close to 10KΩ.

### 5.9.2. GNSS Active Antenna Integration

The AirPrime HL8549-G module embeds a GPS/GLONASS receiver inside. A possible implementation with an active GNSS antenna is defined below.

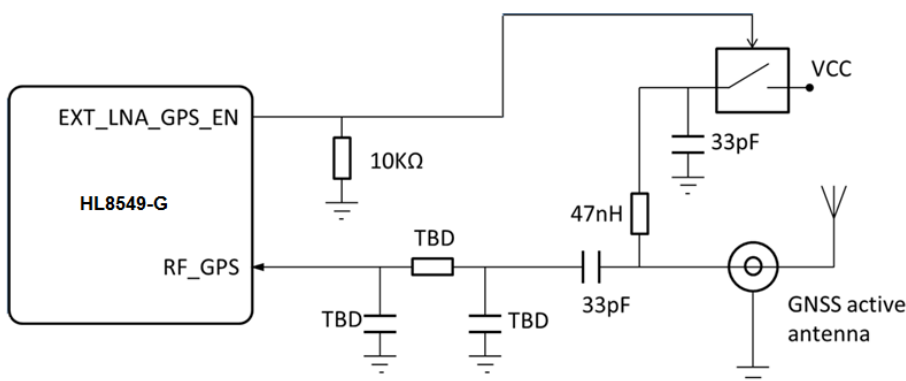


Figure 20. GNSS Application with Active Antenna

EXT\_LNA\_GPS\_EN is a specific signal that automatically sets the AirPrime HL8549-G module internal LNA to low gain when an external pull-down resistor is detected.

**Note:** When the application needs to monitor the active antenna current, current monitor devices can be connected to any of the module’s GPIOs, and read with a dedicated AT command.

## 6. X-Ray Exposure

X-ray exposure results in an undesirable shift in programmed bit threshold voltage of the Flash memory.

As a result, Sierra Wireless recommends avoiding any X-ray exposure during customer manufacturing process to ensure software integrity and long term reliability.

In case X- ray inspection could not be eliminated from the customer manufacturing process, a variety of mitigation methods should be implemented to lower the risk of potential failure:

- Use of filter between source and module to minimize exposure to harmful soft X- ray
  - 300µm Zn filter or 1mm Al filter are optimal
  - Zn and Al absorb soft X-ray to which silicon is particularly vulnerable, and transmit soft and medium energy X-rays required to obtain good imaging
- Minimize X-Ray dose
  - should be less than 10 RADs
  - KV peak should be less than 50KV peak
  - tube current should be less than 20µA
- Maximize distance between source and the module
- Minimize the X-ray time
  - use the shortest exposure time possible
  - sampling only, not 100% inspection

Note that these mitigation guidelines are for information only as it's NOT possible to provide accurate acceptable or unacceptable X- ray exposure criteria, e.g. maximum safe dose rate, maximum safe exposure time, etc.



## 7. FCC Legal Information

The HL8549x module has been granted modular approval for mobile applications. Integrators may use the HL8549x module in their final products without additional FCC certification if they meet the following conditions. Otherwise, additional FCC approvals must be obtained.

1. At least 20 cm separation distance between the antenna and the user's body must be maintained at all times.
2. To comply with FCC regulations limiting both maximum RF output power and human exposure to RF radiation, the maximum antenna gain including cable loss in a mobile-only exposure condition must not exceed:
  - TBD dBi in the cellular band
  - TBD dBi in the PCS band
3. The HL8549x module must not transmit simultaneously with other collocated radio transmitters within a host device.
4. The RF signal must be routed on the application board using tracks with a  $50\Omega$  characteristic impedance. Basically, the characteristic impedance depends on the dielectric, the track width and the ground plane spacing. In order to respect this constraint, Sierra Wireless recommends using MicroStrip or StripLine structure and computing the Tracks width with a simulation tool (like AppCad shown in the figure below and that is available free of charge at <http://www.agilent.com>).

AppCAD - [Microstrip]

File Calculate Select Parameters Options Help

Main Menu [F8]

### Microstrip

Calculate Z0 [F4]

W = 700

H = 400

$\epsilon_r$

T = 35

L = 10000

Dielectric:  $\epsilon_r = 4,6$

FR-4

Frequency: 1800 MHz

Length Units: um

Z0 = 50.22  $\Omega$

Elect Length = 0,110  $\lambda$

Elect Length = 39,6 degrees

1.0 Wavelength = 90806,456 um

Vp = 0,545 fraction of c

$\epsilon_{eff} = 3,364$

W/H = 1,750

Normal

Click for Web: APPLICATION NOTES · MODELS · DESIGN TIPS · DATA SHEETS · S-PARAMETERS



If a multi-layered PCB is used, the RF path on the board must not cross any signal (digital, analog or supply).

If necessary, use Stripline structure and route the digital line(s) "outside" the RF structure. An example of proper routing is shown in the figure below.



Stripline and Coplanar design requires having a correct ground plane at both sides. Consequently, it is necessary to add some vias along the RF path. It is recommended to use Stripline design if the RF path is fairly long (more than 3cm), since MicroStrip design is not shielded. Consequently, the RF signal (when transmitting) may interfere with neighbouring electronics (AF amplifier, etc.). In the same way, the neighbouring electronics (micro-controllers, etc.) may degrade the reception performances. The GSM/GPRS connector is intended to be directly connected to a 50Ω antenna and no matching is needed.

5. A label must be affixed to the outside of the end product into which the HL8549x module is incorporated, with a statement similar to the following:

This device contains FCC ID: **N7NHL8549G**

6. A user manual with the end product must clearly indicate the operating requirements and conditions that must be observed to ensure compliance with current FCC RF exposure guidelines.

The end product with an embedded HL8549x module may also need to pass the FCC Part 15 unintentional emission testing requirements and be properly authorized per FCC Part 15.

---

*Note: If this module is intended for use in a portable device, you are responsible for separate approval to satisfy the SAR requirements of FCC Part 2.1093.*

---

## 7.1. IC Regulations

IC Radiation Exposure Statement:

This equipment complies with IC RSS-102 radiation exposure limits set forth for an uncontrolled environment. This equipment should be installed and operated with minimum distance 20cm between the radiator & your body.

This device and its antenna(s) must not be co-located or operating in conjunction with any other antenna or transmitter.

This Class B digital apparatus complies with Canadian ICES-003.

Under Industry Canada regulations, this radio transmitter may only operate using an antenna of a type and maximum (or lesser) gain approved for the transmitter by Industry Canada. To reduce potential radio interference to other users, the antenna type and its gain should be so chosen that the equivalent isotropically radiated power (e.i.r.p) is not more than necessary for successful communication.

Labeling Requirements for the Host Device (from Section 3.2.1, RSS-Gen, Issue 3, December 2010): The host device shall be properly labeled to identify the module within the host device. The Industry Canada certification label of a module shall be clearly visible at all times when installed in the host device, otherwise the host device must be labeled to display the Industry Canada certification number of the module, preceded by the words – Contains

transmitter module, or the word – Contains, or similar wording expressing the same meaning, as follows: Contains transmitter module IC: **2417C-HL8549G**.

This device complies with Industry Canada license-exempt RSS standard(s). Operation is subject to the following two conditions: (1) this device may not cause interference, and (2) this device must accept any interference, including interference that may cause undesired operation of the device. Le présent appareil est conforme aux CNR d'Industrie Canada applicables aux appareils radio exempts de licence.

This radio transmitter (identify the device by certification number, or model number if Category II) has been approved by Industry Canada to operate with the antenna types listed below with the maximum permissible gain and required antenna impedance for each antenna type indicated. Antenna types not included in this list, having a gain greater than the maximum gain indicated for that type, are strictly prohibited for use with this device.



## 8. Ordering Information

Table 37. Ordering Information

Model Name	Part Number	Designation
HL8549	1102258	HL8549
HL8549-G	1102276	HL8549-G
DEV-KIT	6000575	DEV-KIT, HL series

## 9. Terms and Abbreviations

Abbreviation	Definition
ADC	Analog to Digital Converter
AGC	Automatic Gain Control
AT	Attention (prefix for modem commands)
CDMA	Code Division Multiple Access
CF3	Common Flexible Form Factor
CLK	Clock
CODEC	Coder Decoder
CPU	Central Processing Unit
DAC	Digital to Analog Converter
DTR	Data Terminal Ready
EGNOS	European Geostationary Navigation Overlay Service
EMC	Electromagnetic Compatibility
EMI	Electromagnetic Interference
EN	Enable
ESD	Electrostatic Discharges
ETSI	European Telecommunications Standards Institute
FDMA	Frequency-division multiple access
GAGAN	GPS aided geo augmented navigation
GLONASS	Global Navigation Satellite System
GND	Ground
GNSS	Global Navigation Satellite System
GPIO	General Purpose Input Output
GPRS	General Packet Radio Service
GSM	Global System for Mobile communications
Hi Z	High impedance (Z)
IC	Integrated Circuit
IMEI	International Mobile Equipment Identification
I/O	Input / Output
LED	Light Emitting Diode
LNA	Low Noise Amplifier
MAX	Maximum
MIN	Minimum
MSAS	Multi-functional Satellite Augmentation System
N/A	Not Applicable
PA	Power Amplifier
PC	Personal Computer
PCB	Printed Circuit Board
PCL	Power Control Level
PLL	Phase Lock Loop
PWM	Pulse Width Modulation
QZSS	Quasi-Zenith Satellite System

<b>Abbreviation</b>	<b>Definition</b>
RF	Radio Frequency
RFI	Radio Frequency Interference
RMS	Root Mean Square
RST	Reset
RTC	Real Time Clock
RX	Receive
SCL	Serial Clock
SDA	Serial Data
SIM	Subscriber Identification Module
SMD	Surface Mounted Device/Design
SPI	Serial Peripheral Interface
SW	Software
PSRAM	Pseudo Static RAM
TBC	To Be Confirmed
TBD	To Be Defined
TP	Test Point
TX	Transmit
TYP	Typical
UART	Universal Asynchronous Receiver-Transmitter
UICC	Universal Integrated Circuit Card
USB	Universal Serial Bus
UIM	User Identity Module
VBATT	Main Supply Voltage from Battery or DC adapter
VSWR	Voltage Standing Wave Ratio
WAAS	Wide Area Augmentation System



**SIERRA**  
WIRELESS®