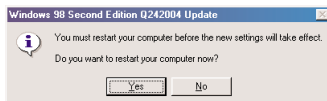
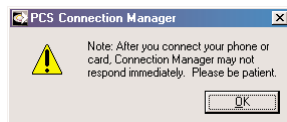


11. **Windows 98SE only:** You must restart your computer before the new settings will take effect. Click **Yes** to restart your computer.



**Note:** The following screen shot will appear for Windows 2000 and XP, whereas the same screen shot will appear for Windows 98 and Me after reboot.

12. Click **OK** to proceed.



13. The PCS Connection Manager will launch.



## Part 2: Driver Installation

1. Insert the PCS Connection Card into your computer's **PC Card slot** (Sprint label facing up). Then raise the antenna so that it is fully extended and pointed up at a 90 degree angle. Use in any other configuration may exceed FCC RF Exposure limits.

**WARNING:** Once the card is inserted, do not physically remove the Wireless PC Card until you have completed the Unplug/Eject process described on page 38. This may cause a fatal error to your notebook computer.



2. Your operating system will determine which Driver Installation instructions you will follow:

- ▶ **Option 1:** Hardware Detection for Windows 2000 and Windows ME (page 24)
- ▶ **Option 2:** Hardware Detection for Windows 98SE (page 25)
- ▶ **Option 3:** Hardware Detection for Windows XP (page 27)

## PC3220 PC Card

### Regulatory Information

#### In This Section

- Warning (EMI)- US FCC Information
- Warning (EMI)- Canada

**This Section outlines important regulatory notices concerning your new PC Card.**

Section 5: Technical Specifications/Regulatory information  
5B: Regulatory Information

---

### Regulatory Notices

This device is compliant with Parts 15, 22, and 24 of the FCC rules. This PC card has been tested in a typical laptop computer configuration with the side loading PCMCIA bay. This PC card must not be co-location or operated in conjunction with any other antenna or transmitter. Use of this device in any other configuration may exceed the FCC RF Exposure compliance limit.

Operation of this device is subject to the following two conditions:

1. This device may not cause harmful interference, and
2. This device must accept any interference received, including interference that may cause undesirable operations.

FCC guidelines stipulate that the antenna should be more than 1.5 cm (.59") from by-standers and 1.0cm (0.39") from the user. When in use, the antenna should be fully extended upward at a 90-degree angle.

The highest reported SAR values of the PC card- Model PC3220 are:

1. Separation distance of 1.5 cm (0.59") to nearby persons (1.26 w/kg).
2. Direct contact to user's lap with PC card inserted into the bottom PC card slot of the laptop computer with antenna in the stowed (down) position (1.34 w/kg).

### FCC ID: PNF-PC3220P

**Caution:** Unauthorized modification of this device not expressly approved by the manufacturer could void compliance with RF exposure guidelines.

**Warning-** This equipment has been tested and found to comply with the limits pursuant to Part 15, 22, and 24 of the FCC Rules. These limits are designed to provide reasonable protection against harmful interference in an appropriate installation. This equipment generates, uses, and can radiate radio frequency energy and, if not installed and used in accordance with the instruction, may cause harmful interference to radio communication. However, there is no guarantee that interference will not occur in a particular installation.

[Section 5: Technical Specification/Regulatory Information  
5B: Regulatory Information

If this equipment does cause harmful interference to radio or television reception, which can be determined by turning the equipment off and on, the user is encouraged to try to correct the interference by one or more of the following measures:

- Reorient or relocate the receiving antenna
- Increase the separation between the equipment and receiver
- Connect the equipment into an outlet on a circuit different from that to which the receiver is connected
- Consult the dealer or an experienced radio/TV technician for help

**WARNING-** This digital apparatus does not exceed the Class B limits for radio noise emissions from digital apparatus as set forth in the interference causing equipment standard entitled "Digital Apparatus," ICES-003 of the Department of Communications.

Cet appareil numérique respecte les limites de bruits radioélectriques applicables aux appareils numériques de Classe B prescrites dans la norme sur le matériel brouilleur. "Appareils Numériques," NMB-003 édictée par le ministre de Communications.

If you have purchased this product under a United States Government contract, it shall be subject to restrictions as forth in subparagraph (C)(1)(ii) of Defense Federal Acquisitions Regulations (DFARs) Section 252.227-7013 for Department of Defense contracts, and as set forth in Federal Acquisitions Regulations (FARs) Section 52.227-19 for civilian agency contracts or any successor regulations. If further government regulations apply, it is your responsibility to ensure compliance with such regulations.

**Section 5: Technical Specifications / Regulatory Information**  
100 5B: Regulatory Information

# Safety Information And Terms & Conditions

## Sec. 6 Safety Information and Terms & Conditions

---

### Section 6 A

## Safety and Notices

### In this Section

- Important Notice
- Safety and Hazards

This section outlines important liability and safety guidelines concerning your new PC Card.

### Section 6: Safety Information and Terms and Conditions 6 A: Safety and Notices 105

---

## Important Notice

Because of the nature of wireless communications, transmission and reception of data can never be guaranteed. Data may be delayed, corrupted (i.e., have errors) or be totally lost. Although significant delays or losses of data are rare when wireless devices such as the PC Card-Model PC3220 CDMA modem are used in a normal manner with a well constructed network, they should not be used in situations where failure to transmit or receive data could result in damage of any kind to the user or another party, including but not limited to personal injury, death or loss of personal property. No responsibility for damages of any kind resulting from delays or errors in data transmitted or received using the PC Card-Model PC3220 CDMA modem, or for failure of the PC Card-Model PC3220 to transmit or receive such data.

## Safety and Hazards

Do not operate the PC Card-Model PC3220 in areas where blasting is in progress, where explosive atmospheres may be present, near medical equipment, life support equipment, or any equipment which may be susceptible to any form of radio interference. In such areas the PC Card-Model PC3220 **MUST BE POWERED OFF**. It can transmit signals that could interfere with this equipment.

Do not operate the PC Card- Model PC3220 in any aircraft whether the aircraft is on the ground or in flight. In aircraft, the PC Card- Model PC3220 **MUST BE POWERED OFF**. When operating it can transmit signals that could interfere with various onboard systems.

The driver or operator of any vehicle should not operate the PC Card- Model PC3220 while in control of a vehicle. Doing so will detract from the driver or operator's control and operation of that

vehicle. In some jurisdictions, operating such communications devices while in control of a vehicle is an offense.

**Section 6: Safety Information and Terms and Conditions**  
**106 6 A: Safety and Notices**

---