

**NEMESIS GEFORCE2 MX200/MX400
User's Manual
Version 1.0**

Notice

This device has been approved by EMI for home. It can be used in all areas including residential area.
--

FCC NOTICE

THIS DEVICE COMPLIES WITH PART 15 OF THE FCC RULES.
OPERATION IS SUBJECT TO THE FOLLOWING TWO CONDITIONS:
(1) THIS DEVICE MAY NOT CAUSE HARMFUL INTERFERENCE, AND
(2) THIS DEVICE MUST ACCEPT ANY INTERFERENCE RECEIVED,
INCLUDING INTERFERENCE THAT MAY CAUSE UNDESIRABLE
OPERATION.

This equipment has been tested and found to comply with the limits for a Class B digital device, pursuant to part 15 of the FCC Rules. These limits are designed to provide reasonable protection against harmful interference in a residential installation. This equipment generates, uses and can radiate radio frequency energy and, if not installed and used in accordance with the instructions, may cause harmful interference to radio communication. However, there is no guarantee that interference will not occur in a particular installation. If this equipment does cause harmful interference to radio or television reception, which can be determined by turning the equipment off and on, the user is encouraged to try to correct the interference by one or more of the following measures :

- Reorient or relocate the receiving antenna.
- Increase the separation between the equipment and receiver.
- Connect the equipment into an outlet on a circuit different from that to which the receiver is connected.
- Consult the dealer or an experienced radio/TV technician for help.

NOTE : The manufacturer is not responsible for any radio or TV interference caused by unauthorized modifications to this equipment. Such modifications could void the user's authority to operate the equipment.

Table of Contents

Chapter 1 Introduction

- *Features of NEMESIS GEFORCE2 MX200/MX400*
- *System Configuration and Each Part Description*

Chapter 2 Installation

- *Installation of display drivers*
 - Windows 98*
 - Windows ME*
 - Windows 2000*
 - Windows NT*
- *Installation of application programs*

Chapter 3 How to use programs

- *Using NEMESIS GEFORCE2 MX200/MX400's utilities*
- *Watching VIDEO CD*
- *Listening to MP3 audio*

Addendum

- *Q & A*

Chapter 1. Introduction

Contents of the package

Thank you for purchasing the NEMESIS GEFORCE2 MX200/MX400.

Please make sure that you have a full content of the NEMESIS GEFORCE2 MX200/MX400 after removing the package.

NEMESIS GEFORCE2 MX200/MX400 Board

It is equipped in AGP slot of system main board.

Installation CD

It is an installation CD that contains drivers and programs.

User's manual

It describes the installation and use of application programs.

Features of NEMESIS GEFORCE2 MX200/MX400

- * Powered by nVIDIA's GeForce 2 MX 200 / MX 400
- * Two new Hypertexel pipelines
- * Up to 20million triangles per second at peak rates
- * Full scene anti-aliasing and Per-Pixel Shading
- * Maximum resolution up to 2048x1536 at 75 Hz
- * 32MB Video Memory support
- * Integrated 350MHz RAMDAC
- * AGP 4X/2X with Fast Writes and Execute Mode
- * DirectX 7.0/OpenGL support
- * DVD acceleration
- * 100% hardware triangle setup engine
- * Transform and Lighting (T&L) Engine
- * Sigma MP3 Player
- * Flash ROM BIOS for BIOS update
- * GigaTexel Shading processing two texture per pixel
- * Optimized drivers for Windows9x, NT40 and Windows2000

System Configuration and Each Part Description

● System Configuration

To use the NEMESIS GEFORCE2 MX200/MX400 effectively, you need the following configuration.

CPU & Main board

IBM-PC compatible main board in compliance with AGP 2.0

(More than Intel 440BX or VIA Apollo pro)

Intel Pentium II/III CPU or compatible

O/S

Windows98

Windows98SE

WindowsNT4.0 (more than service pack 3)

Windows 2000

Windows Me

(Sigma VCD /MP3 are for Windows 98(SE).)

Software

Microsoft DirectX6.1

System memory

32MB or more

Peripherals

50MB free hard disk space

CD-ROM drive

MS Compatible mouse

Sound blaster compatible sound card (recommended)

3.5" Floppy Drive

Multi-scan monitor

● Part Description

1. Monitor connector

is connected to the monitor and outputs video signals.

2. Feature connector

is a connection jumper for connection with other multimedia products.

To use the function, you need to refer to the manual provided by its manufacturer.

3. ROM BIOS

is the location of the memory containing basic program code to control the VGA in your system.

4. Video memory

is a storage place to have the contents to be displayed on the screen. It is called as Frame buffer or Video buffer. 32MB(or 64MB) high speed SDRAM or DDR SGRAM are provided as standard, which is the maximum amount of memory supported by the NEMESIS GEFORCE2 MX200/MX400.

Chapter 2 Installation

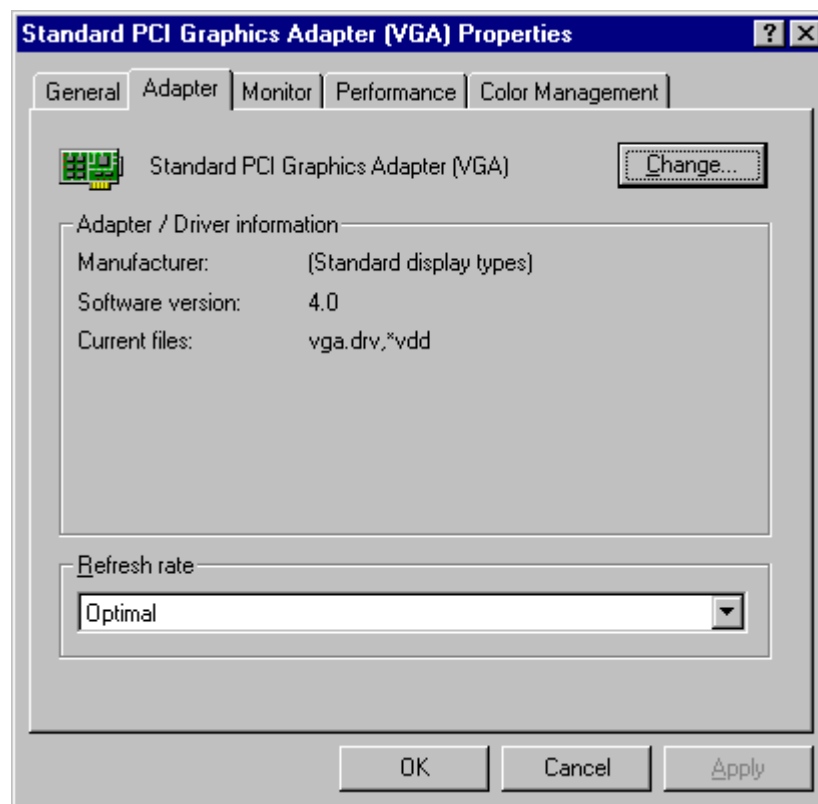
Installation of display drivers

Windows 98 SE

In case of installing the NEMESIS GEFORCE2 MX 200/MX 400 with Windows 98 SE

If you have installed Windows 98 newly, your system recognizes the video card as “Standard PCI Graphics Adapter [VGA]”. If it has not been set correctly, switch display to “Standard PCI Graphics Adapter [VGA]” and processed the following procedures.

1. Insert the installation CD into the CD-ROM Drive.
2. Click the right mouse button on the Windows screen and select “Properties” on the dialog box.
3. Select “Settings” in “Display properties”.
4. Click “Advanced”, “Adapter” then click “Change...”.

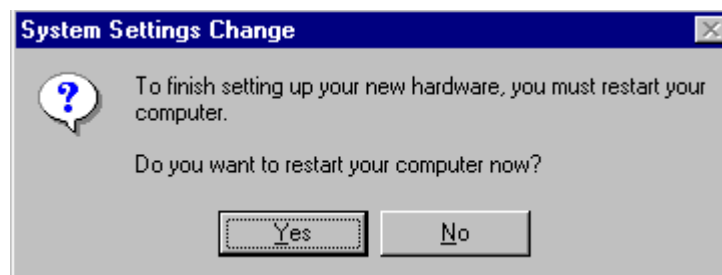


5. “Update Device Driver Wizard” appears then click “Next”.
6. Select “Search for a better driver than the one your device is using now. [Recommended]”. Click “Next” again.

-
7. Select "Specify a location". (Do not select other items.)
 8. Select "WIN9X" folder on "MX200-400" folder of CD-ROM drive by using "Browse..." button then click "Next".



9. If it recognizes "NVIDIA GEFORCE2 MX / MX400", click " Next" again. ("NVIDIA GeForce2 MX200" is displayed if you use MX 200,)
10. The appropriate drivers will be copied and the system will be configured automatically.
11. Click "Finish".
12. If a dialog box appears asking if you want to restart your system, select "Yes".



In case of exchanging the VGA card to the NEMESIS GEFORCE2 MX 200/MX 400 in Windows 98 SE

1. When Windows 98 SE begins, the “Add new hardware wizard” dialog box will appear then click “Next”.

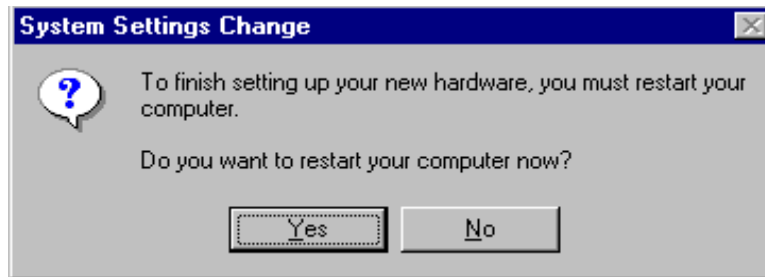


2. Select “Search for the best driver for your device. [Recommended]” and click “Next”.
3. Select “Specify a location” and “WIN9X” folder on “MX200-400” folder of CD-ROM drive by using “Browse...” button then click “Next”.



4. If it recognizes “NVIDIA GeForce2 MX / MX400”, click “Next” again. (“NVIDIA GeForce2 MX200” is displayed if you use MX 200,)

-
5. The appropriate drivers will be copied and the system will be configured automatically.
 6. Click "Finish".
 7. If a dialog box appears asking if you want to restart your system, select "Yes".

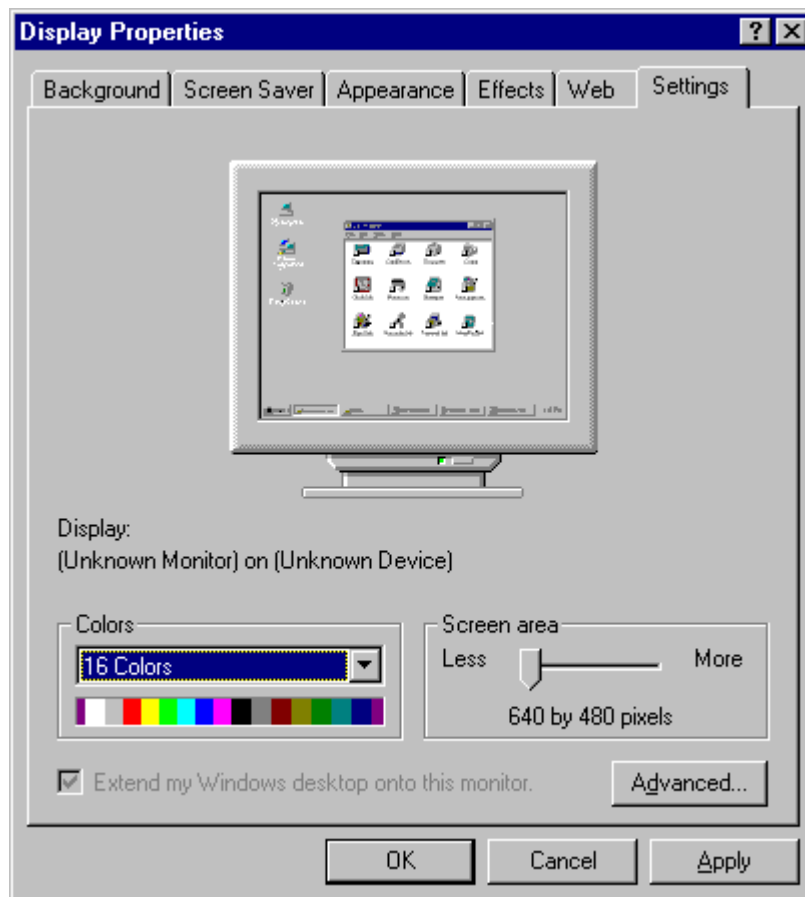


Windows ME

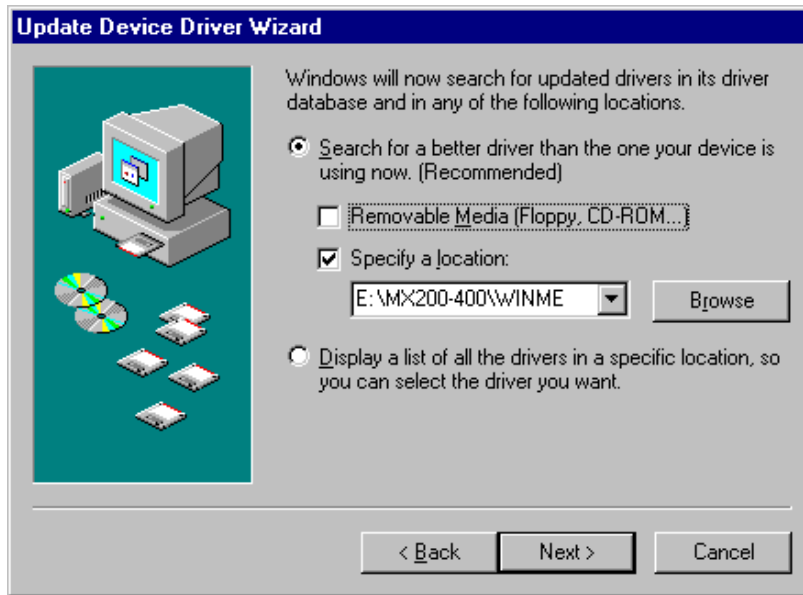
In case of installing Windows ME in your system that has the NEMESIS GEFORCE2 MX200/MX400.

When you install Windows ME in condition that the NEMESIS GEFORCE2 MX200/MX400 has been installed, Adapter type is set to “Standard PCI Graphics Adapter[VGA]”. You can find Video controller (VGA compatible) in “Other device” in ‘Device manager’

1. Insert the installation CD into CD-ROM drive when Windows Me starts.
2. Click the right mouse button on the background and select “Properties” when Pop-up menu appears.

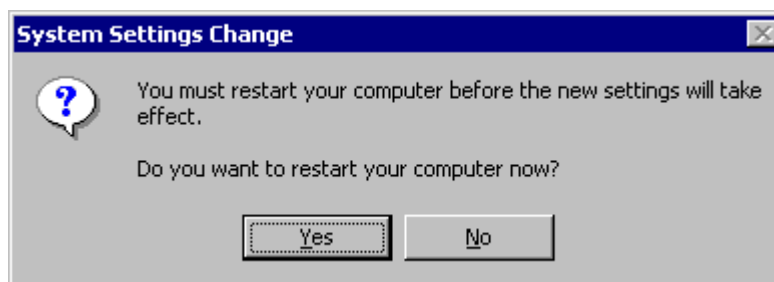


3. Select “Settings” in “Display Properties”.
4. Click “Advanced” and “Adapter” then “Change”.
5. “Update Device Driver Wizard” appears. Select “Specify the location of the driver (Advanced)” and click “Next”.
6. Select “Search for a better driver than the one your device is using now (Recommended)” and “Specify a location” and “Browse...”. Do not select “Removable Media”.



7. Select "WINME" folder on "MX200-400" folder of CD-ROM drive by using "Browse" button then click "OK".
8. When it turns back to the "Update Device Driver Wizard", then click "Next".
9. "NVIDIA GeForce2 MX / MX400 (vX.XX)" in "Update Device Driver Wizard" is displayed, then click "Next".
10. The appropriate drivers will be copied and the system will be configured automatically.
11. Click "Next" then "Finish".

If a dialog box appears asking if you want to restart your system, select "Yes".



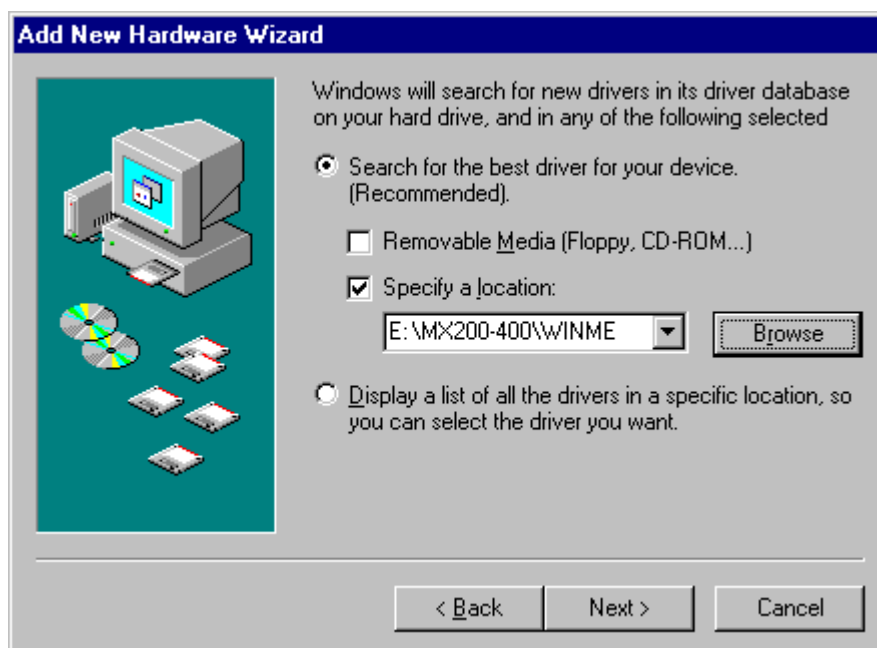
In case of exchanging the VGA card to the NEMESIS GEFORCE2 MX200/MX400

When you remove the existing VGA card from your system and newly install the NEMESIS GEFORCE2 MX200/MX400 then “New hardware found” dialog box appears and “add new hardware wizard” is started automatically.

1. Select “Specify the location of the driver[Advanced]”and click “Next”.



2. Insert the installation CD into your CD-ROM Drive.
3. Select “Search for a better driver than the one your device is using now (Recommended)” and “Specify a location” and “Browse...”. Do not select “Removable Media”.



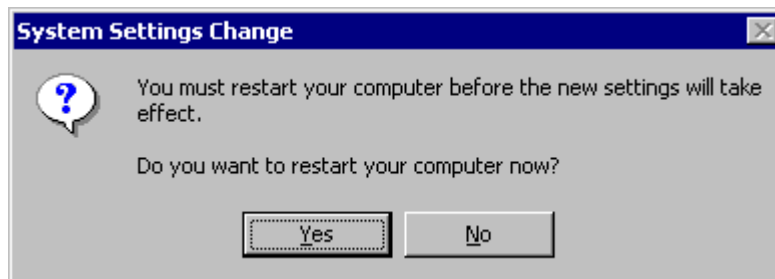
4. Select “WINME” folder on “MX200-400” folder of CD-ROM drive by using “Browse” button

then click "Next".

5. Select "The updated software [Recommended]".



6. Click "Next". The appropriate drivers will be copied and the system will be configured automatically.
7. A message that the driver has been installed successfully appears. Then click "Finish". It will prompt you to restart your computer, click "Yes" to restart your computer to complete the installation.

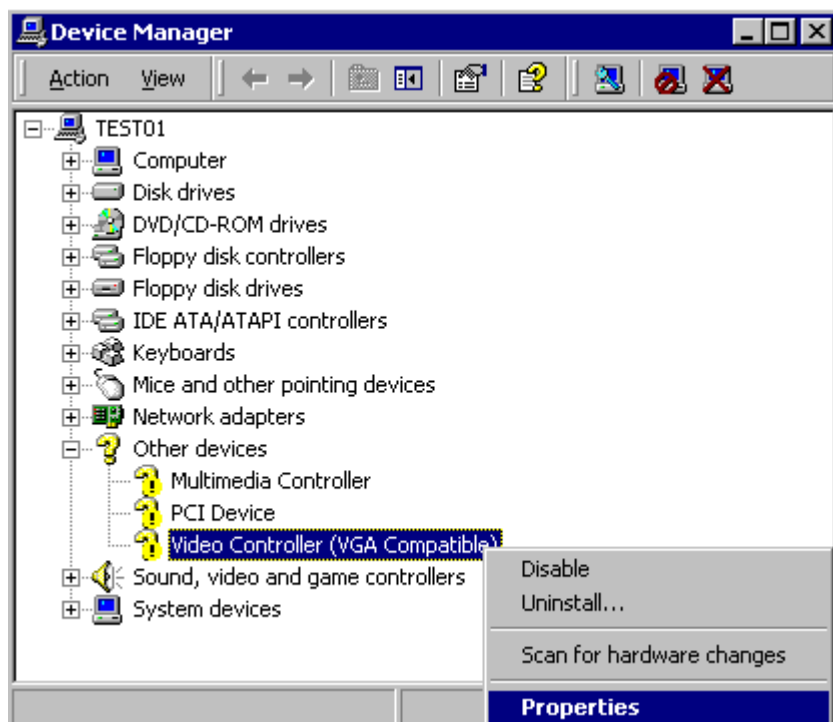


Windows 2000

In case of installing Windows 2000 in your system that has the NEMESIS GEFORCE2 MX200/MX400.

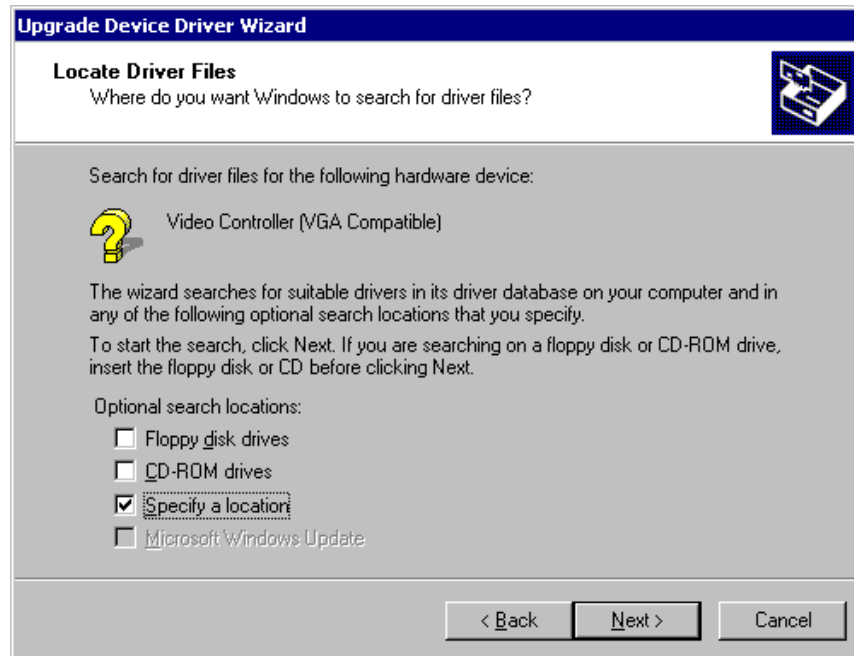
When you install Windows 2000 in condition that the NEMESIS GEFORCE2 MX200/MX400 has been installed, Adapter type is set to “VGA”. You can find Video controller (VGA compatible) in “Other device” in ‘Device manager’

1. Insert the installation CD into your CD-ROM Drive.
2. Click the right mouse button on the “My Computer” and select “properties”.
3. Select “hardware” and click “Device manager” then the device manager dialog box and Video controller (VGA compatible) in “Other devices” appear.
4. Click “Video controller (VGA compatible)” using Mouse right button and select “Properties”.
5. Select “Reinstall Driver” then “Upgrade Device Driver Wizard” window appear.

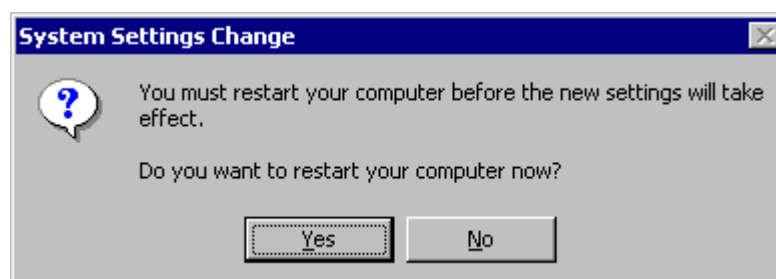


6. “Driver upgrade wizard” or ‘New hardware search wizard’ appears. Then click “Next”.

7. Select “**Search for the best driver for your device (recommended)**” and click “Next”.
8. Select “Specify location”, click “Next” and “Browse”. Select “\MX200-400\WIN2000” folder on the Installation CD when the browse dialog box appears and click “Open”.



9. When you click “O.K”, the location of the INF file appears. Click “Next”.
10. If the driver has not been certified by WHQL, “Can not find the digital signature” dialog box appears. Click “Yes” to proceed.
11. A message that the driver has been installed successfully appears. Then click “Finish”. It will prompt you to restart your computer, click “Yes” to restart your computer to complete the installation.



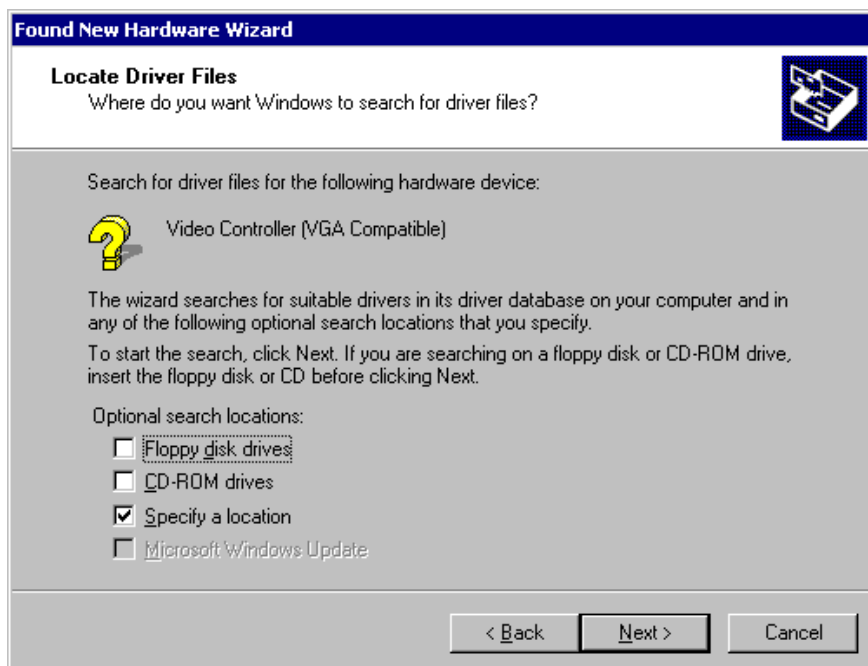
In case of exchanging the VGA card to the NEMESIS GEFORCE2 MX200/MX400 in Windows 2000.

When you remove the existing VGA card from your system and newly install the NEMESIS GEFORCE2 MX200/MX400 “New hardware found” dialog box appears and “add new hardware wizard” is started automatically.

1. Click “Next”.
2. Select ‘Search for the best driver for your device(recommended)’and click “Next”.



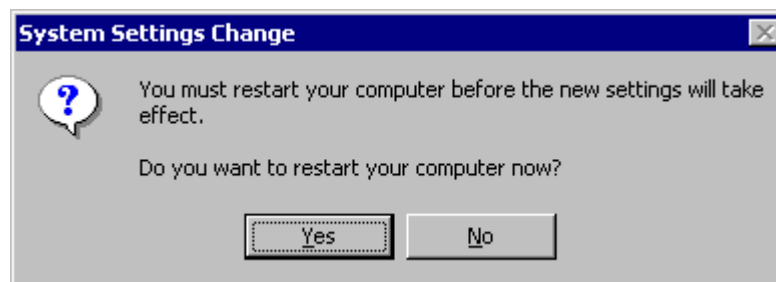
3. Insert the installation CD into your CD-ROM Drive.
4. Select “Specify a location” and click “Next”,



-
5. Select "WIN2000" folder on "\MX200-400" folder of CD-ROM drive by using "Browse" button. Click "Next".



6. If the driver has not been certified by WHQL, "Can not find the digital signature" dialog box appears. Click "Yes" to proceed.
7. A message that the driver has been installed successfully appears. Then click "Finish". It will prompt you to restart your computer, click "Yes" to restart your computer to complete the installation.

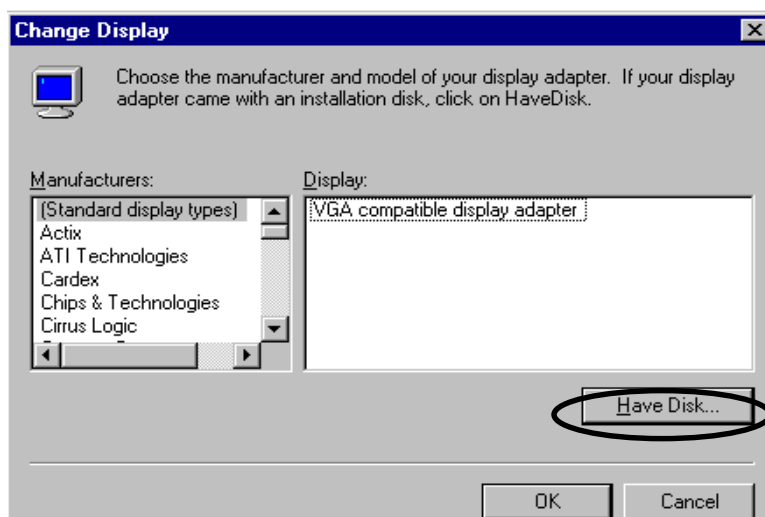


Windows NT4.0

Note

- ♦ To install the NEMESIS GEFORCE2 MX200/MX400 in Windows NT 4.0, you should have Service pack 3 or higher.

1. Start Windows NT4.0.
2. Insert the installation CD into your CD-ROM Drive.
3. Click the right mouse button on the Windows screen and select “properties” on the dialog box.
4. The “display properties” dialog box appears. Click “display type” on “Settings”.
5. Select “Change” in the “adapter type”. “Display change” dialog box appears. Then click “Have Disk”.

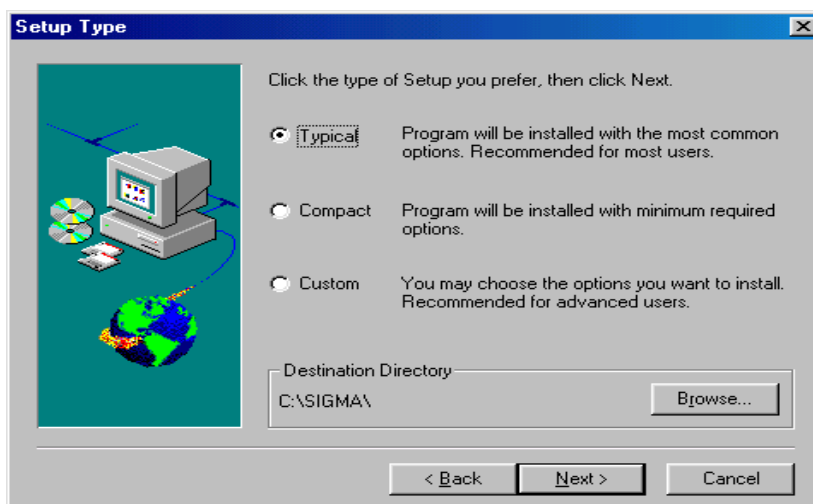


6. Click “Browse” to select the path of the display driver for Windows NT. Select ‘nv4_disp’ of ‘NT 40’ in ‘MX200-400’ folder and ‘Open’.
7. Confirm the path is entered and click “OK”.
8. If it recognizes “NVIDIA GeForce2 MX / MX400 (vX.XX)”, click “OK”.
9. Select “Yes” if a dialog box that asks to install a third party drivers.
10. All appropriate files are then copied to the hard disk. When all files are copied, go back to the Display Properties box by clicking Close.
11. Click “Yes” to restart your system.

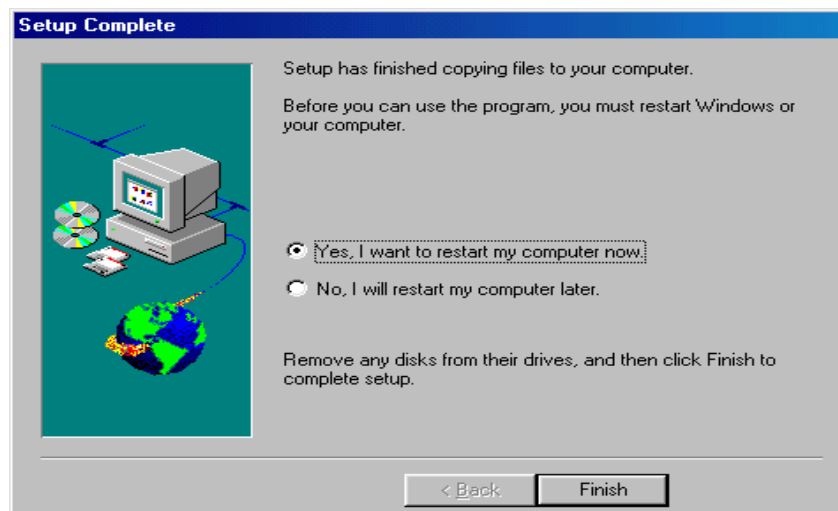
Installation of application programs

Installation of application programs for NEMESIS GEFORCE2 MX200/MX400

1. Insert the installation CD into your CD-ROM Drive.
2. Open "My Computer" in Windows 98 and select your CD-ROM Drive.
3. Run "SETUP.EXE" in the "UTILITY" folder.
4. The instruction screen appears. Then click "Next" to proceed.
5. Installation directory and types are shown in the dialog box. Click "Next".
If you want to change the installation directory, click "Search" and place a directory you want.
If you want to install user-defined items, select "Custom" then "Next".



6. A dialog box for the program folder appears, then click "Next".
If you want to change the name of the program folder, enter a name in the white blank.
7. A dialog box that shows for confirmation appears, then click "Next" after checking the settings. The applications will be copied and folders and icons will be created.
8. When the installation is completed, it will ask you to restart your system.
9. Click "Yes" to restart your system.

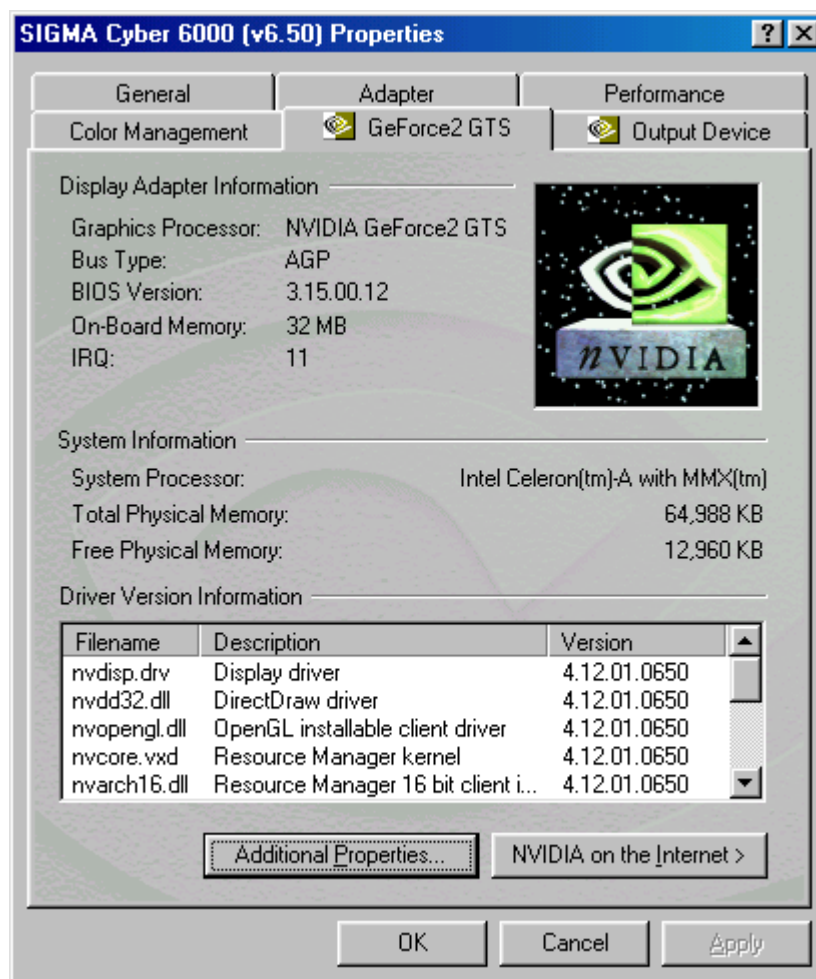


Chapter 3 How to use Utility programs

Using the NEMESIS GEFORCE2 MX200/MX400's utilities

This is a utility program that sets display properties and 3D functions provided by the NEMESIS GeForce2 MX 200/MX 400.

When selecting "GeForce 2 MX" tab right after clicking "Advanced" in "Settings" of the "Display properties", the following dialog box that shows hardware information, driver version and memory size appears. And more functions such as Gamma correction, 3D features, OpenGL and DirectX are provided when clicking "Additional properties" in the below part of the dialog box.



Color management

This is a utility to adjust a color (Gamma value) and contrast value.

Additional GeForce2 GTS Properties

OpenGL Settings | Overlay Color Control | Taskbar Utility

Color Correction | Direct3D Settings

Shows the screen condition that is controlled by the below bars.

Active Color Channel: All channels

Sets a color to control among Red, Blue, Green and all three colors.

Brightness

Controls the brightness.

Contrast

Controls the contrast.

Gamma: 1.00

Controls the color (Gamma value).

Automatically apply these settings at startup

If this is marked, the current settings are applied when starting Windows.

Custom color settings:

Saves or deletes the current set value.

Restore Hardware Defaults

Restores to the default value.

OK Cancel Apply

DirectX 3D settings

This is to specify each detailed item for 3D acceleration.

Additional GeForce2 GTS Properties

OpenGL Settings | Overlay Color Control | Taskbar Utility

Color Correction | Direct3D Settings

Direct3D

Performance and Compatibility Options

- Enable fog table emulation
- Adjust Z-buffer depth to rendering depth if unequal
- Enable alternate depth buffering technique
- Display logo when running Direct3D applications

Mipmapping

Mipmap detail level: Best image quality

PCI Texture Memory Size

Use up to 7 MB of system memory for textures in PCI mode.

Custom Direct3D settings:

Save As... Delete

More Direct3D... Restore Defaults

OK Cancel Apply

MIPMAP detail level (best quality ↔ best speed) adjusts 5 levels of MIPMAP.

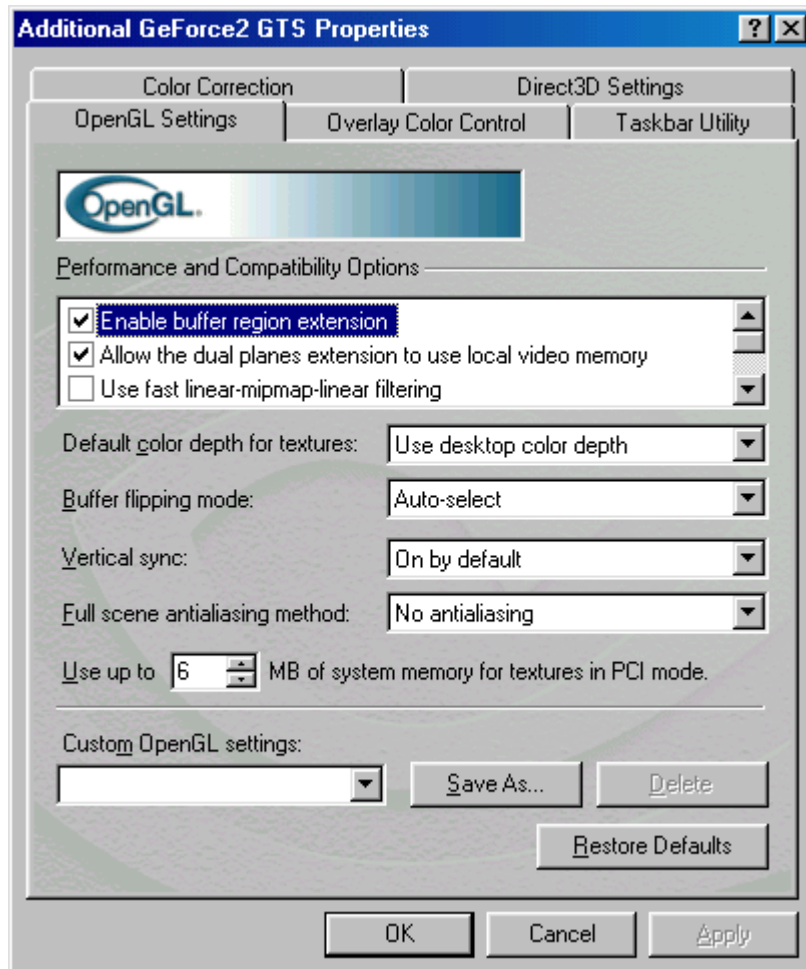
Saves the configuration.

Restores to the default value.

Sets Texel arrangement and PCI texture memory size.

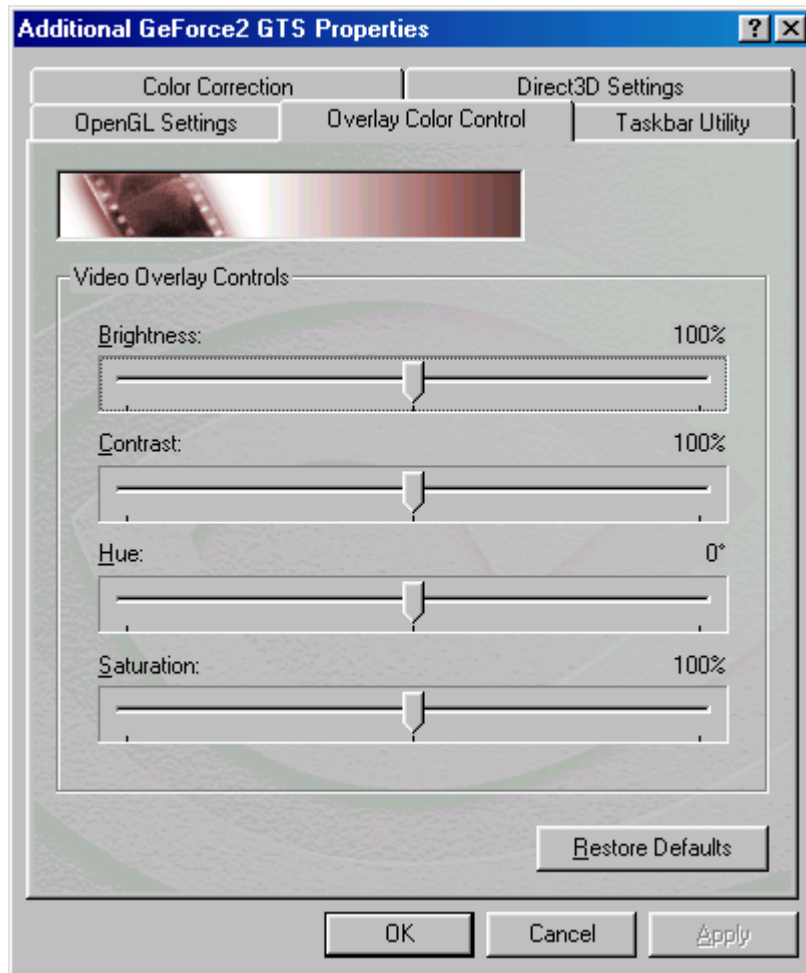
Open GL settings

This is to set the buffer and video memory for OpenGL.



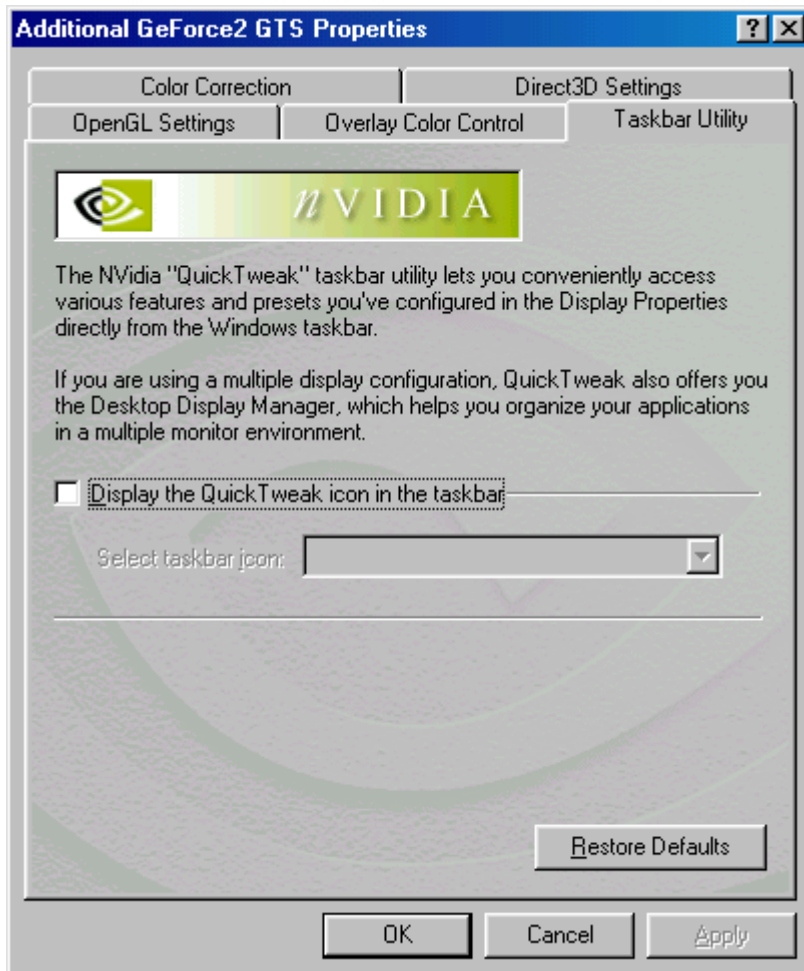
Overlay color control

This is to control the overlay color when watching TV or VCD.



Other options

This sets the display drivers and icon images for display tabs.



Watching Video CD

Note

Make sure that you have installed a sound card in your system before you run SIGMA utilities such as SIGMA VCD player and SIGMA MP3 player.

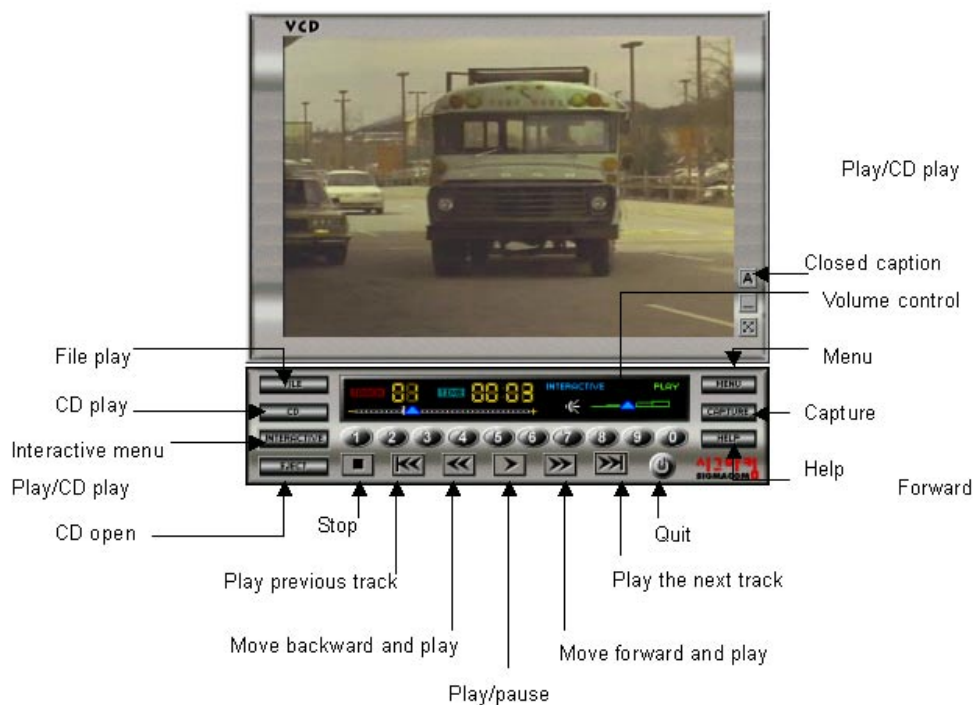
When running a utility program, it automatically searches the sound card in your system. If your sound card driver has not been installed correctly, the utility will deny to work.

● Starting the program

Insert the video CD into the CD-ROM drive.

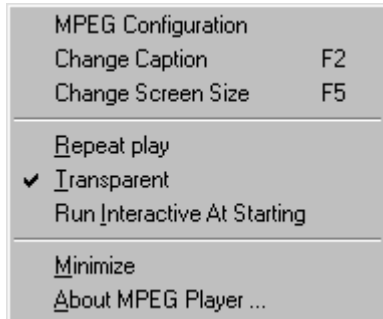
Select 'program' of 'Start' in Windows 95 or 98. Run 'Sigma VCD' of 'Sigma multimedia' folder to display screen window and player panel as follows.

SIGMA CD player is a SW MPEG player to play Video, Audio CD and MIDI files. It also can be used for second language education with closed caption and screen captures.



Menu screen

Click "Menu"[, the following pop-up menu appears.



MPEG config

Sets MPEG configuration for audio channel, volume control, screen size and DirectDraw.

Subtitle change

Changes the subtitle to another language. This is supported with Video CD 2.0.

Screen size control

Changes the screen size to the full or its original.

Auto replay

Replays a title from the beginning.

Hiding the background color of subtitle

Hides the background color of the subtitle on the screen.

Starting Interactive for VCD play

Makes the VCD player start in Interactive mode. It is supported with VCD 2.0 format.

Iconization (minimize)

Minimizes the SIGMA TV player panel.



















Help

Shows the on-line help of SIGMA TV player.

About

Shows the information on the SIGMA TV player.

● **Button Functions**

Button	Description	Function
	Capture	Captures motion pictures.
	Video CD Play	Plays video CD or audio CD.
	CD-ROM Eject	Ejects CD-ROM drive tray.
	Online Help	Displays help for Sigma VCD Player.
	Menu	Displays configuration menu to play Sigma VCD Player.
	File Open	Opens images in file.
	Interactive Mode	Plays interactive mode supported in Video CD 2.0 Cl.
	Previous Track	Plays the previous track.
	Backward Play	Plays backward.
	Play / Pause	Plays or pauses video CD or audio CD.
	Stop	Stops CD palying.
	Forward Play	Plays forward.
	Next Track	Plays the next track.
	Number	Uses to choose track or menu.
	Quit	Quits Sigma VCD Player.
	Subtitle Mode	Change or quit a subtitle.
	Iconize	Minimizes a screen window.
	Size Change	Change to the full screen.

Listening to MP3 audio (Sigma MP3)

SIGMA MP3 player is a high quality MP3 player that runs in Windows environment. You can play all kinds of MP3 files at your convenience.



Repeat

Repeats a MP3 file when clicking the icon.

Open

Opens a MP3 file or list to be played.

Play list

Makes a playable list of MP3 files.

Help

Shows the on line help of the SIGMA MP3 player.

About

Shows the information on the SIGMA MP3 player.

Exit

Quits the SIGMA MP3 player.

Addendum

Q & A

Q1: There is an irregular beep sound when booting up the system after installation and nothing on the monitor screen.

A1: Make sure that your system has been connected to the monitor with cable correctly. Also check the power cable is well connected to the monitor. If the problem still exists, remove the VGA card from the AGP slot, make clear the golden-plated pins of the VGA card with eraser, insert it again into the AGP slot and reboot your system.

Q2: Window95/98 informs that the display setting is still incorrect after installation and restarting.

A2: Drivers for the new display adopter and the existing drivers may conflict with each other or Windows95/98 does not recognize the display adopter correctly. Follow the procedures below. Reboot your system to Safe mode, select 'Start'→'Settings'→'Control panel'→'System'→'Device Manager' and delete all controllers that have been set in "Display adopter". Delete a proper INF file regarding the display adopter (normally located in C:\Windows\INF\Other) and the same INF file in the INF folder. Set to "Standard PCI graphics adopter" and reinstall the display drivers.

Q3: The monitor is not capable of high resolution and refresh rate.

A3: The monitor driver has not been set correctly. Reinstall the monitor driver provided by its manufacturer or set to "Plug and Play monitor". If your monitor does not support DDC, set to "Super VGA 1600X1200" for your convenience.

Q4: Dual monitor is not configured in Windows 98.

A4: In order to use dual monitor in Windows 98, two display adopters need to support Primary and Secondary display each. If you set the SIGMA display adopter (AGP) to the Primary, the other PCI display adopter should be set to the Secondary. When restarting Windows 98, it says the secondary display controller has been detected on your second monitor. At this time, if you install PCI display driver in the display properties of the primary monitor, you can use the display controller with two monitors.

Q5: Display drivers are not installed in Window NT4.0.

A5: Basically the SIGMA display adopter supports AGP2X or higher. As Windows NT does not support AGP2X, you need to install Windows NT 4.0 Service pack3 or higher. You can download Windows NT 4.0 Service Pack3 at www.microsoft.com.

Q5: When running 3D games, the system is halted.

A5: There is a problem in DirectX driver setting. Reinstall updated display drivers and DirectX drivers. Select C:\Program files\DirectX\Setup and run "Dxdiag.exe". Select "Display" tab and check whether Direct3D works correctly by pressing "Test" tab in the Direct3D".

Q6: When running the SIGMA VCD player, Windows 95/98 says that the SIGMA graphics card is not detected and it refuses to run the SIGMA VCD player.

Q6: This comes from not detecting the SIGMA display adopter. You should use BIOS provided by SIGMACOM to run the SIGMA VCD player. (Error message appears if you use another BIOS or you update it from Internet or BBS) Update BIOS from SIGMA Home page at www.sigmacom.co.kr.

Q7: Nothing on the screen when running the SIGMA VCD player.

A7: Generally VCD 2.0 title has been designed for playing movies by Interactive navigation. In case of playing a simple DAT file without Interactive, there is no problem to run the motion file. However when loading and playing a VCD title that does not have interactive function, it refuses to play because the SIGMA VCD player is designed for interactive navigation.

Q8: When running the SIGMA VCD player, the system is halted or gives an error message that it is quitted by mis-calculation.

A8: It may come from S/W MPEG driver. If there is another S/W MPEG driver in your system (ex: Compcore, Mediametics, Xing ...) before installing the SIGMA VCD player, it may cause the conflict. Reinstall the SIGMA VCD player. If the problem still exists, open "System.ini file" and delete another MPEG drivers that registered at MCI part. After that, reinstall the SIGMA multimedia programs.

Q9: When running the SIGMA VCD player, the motion picture is step-played or stopped.

A9: It may be played slowly if your CD-ROM Drive is connected to the IDE connector as Slave. Change its connection to the Master.

SIGMACOM CO., LTD.

1588-9 Anyang Nonghyup B/D 4F
Kwanyang-dong Dongan-gu Anyang city
Kyunggi-do 431-060 Republic of Korea
Phone +82-31-384-1010
Fax +82-31-382-8506
<http://www.sigmaM.com>