

PARAMETER

Model	CCT	Lumen(lm) (±10%)	Beam (angle)	LED Type	LED Qty.	Max Power(w) (±10%)	Voltage, Frequency	CRI	Control method
4inch	2700K	550	110°	2835	Warm White: 2835*9 Cold White: 2835*9	9W	AC120V/60Hz	≥90	Bluetooth, wifi
	3500K	600		2835	Warm White: 2835*9 Cold White: 2835*9	9W			
	5000K	620		2835	Warm White: 2835*9 Cold White: 2835*9	9W			
	R	35		2835	2	2W		/	
	G	100		2835	2	2W			
	B	15		2835	2	2W			
6inch	2700K	750	110°	2835	Warm White: 2835*14 Cold White: 2835*14	12W	AC120V/60Hz	≥90	Bluetooth, wifi
	3500K	800		2835	Warm White: 2835*14 Cold White: 2835*14	12W			
	5000K	800		2835	Warm White: 2835*14 Cold White: 2835*14	12W			
	R	35		2835	2	2W		/	
	G	100		2835	2	2W			
	B	15		2835	2	2W			

NOTICE

1. Please read the specification first, to make sure the service environment matches the condition in the specification before using.
2. Please confirm the applicable power supply before using.
3. Make sure the switch of product is off before connect to the power supply to prevent electric shock.
4. Operation against rules may damage your property even harm to your personal safety.
5. Dangerous high voltage, Non-professionals are not allowed to maintain the products.
6. If the exterior flexible cable or wire is damaged, it must exchange by the supplier, its agent or other similar qualified personnels to avoid dangers.
7. FCC Statement: This equipment has been tested and found to comply with the limits for a Class B digital device, pursuant to part 15 of the FCC Rules. These limits are designed to provide reasonable protection against harmful interference in a residential installation. This equipment generates, uses and can radiate radio frequency energy and, if not installed and used in accordance with the instructions, may cause harmful interference to radio communications. However, there is no guarantee that interference will not occur in a particular installation. If this equipment does cause harmful interference to radio or television reception, which can be determined by turning the equipment off and on, the user is encouraged to try to correct the interference by one or more of the following measures:
 - Reorient or relocate the receiving antenna.
 - Increase the separation between the equipment and receiver.
 - Connect the equipment into an outlet on a circuit different from that to which the receiver is connected.
 - Consult the dealer or an experienced radio/TV technician for help.

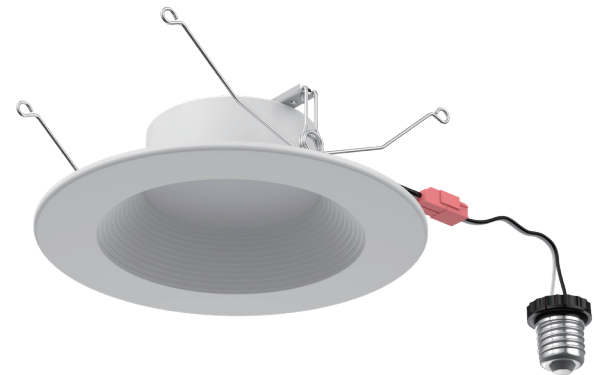
Changes or modifications not expressly approved by the party responsible for compliance could void the user's authority to operate the equipment.

RF Exposure Statement: When using the product, maintain a distance of 20cm from the body to ensure compliance with RF exposure requirements.

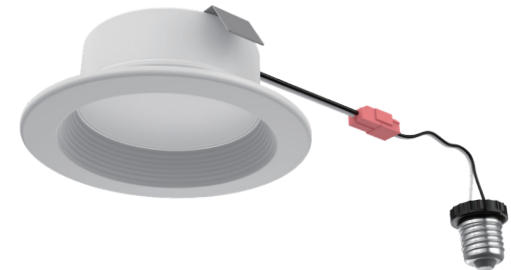
LED Smart Retrofit Downlight

DL212R/DL212BR

6INCH



4INCH



Color Adjustable



2700K

5000K



RGB



Download
Tuya app

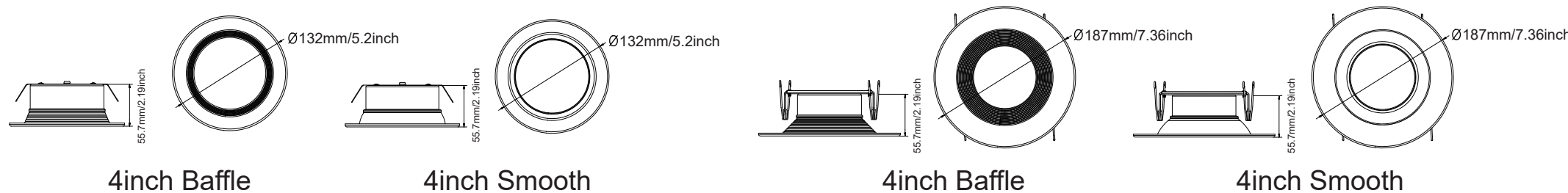


Download
Smart Life app

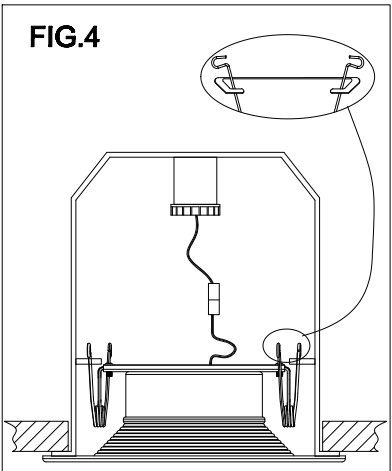
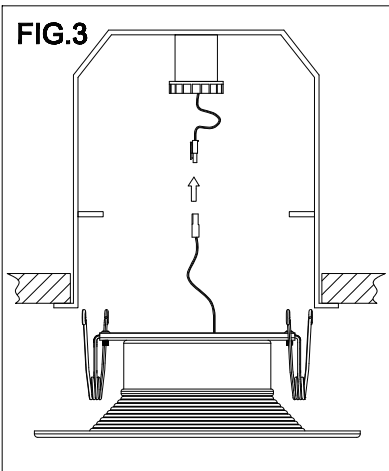
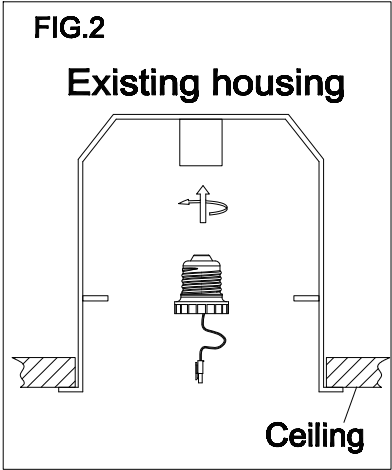
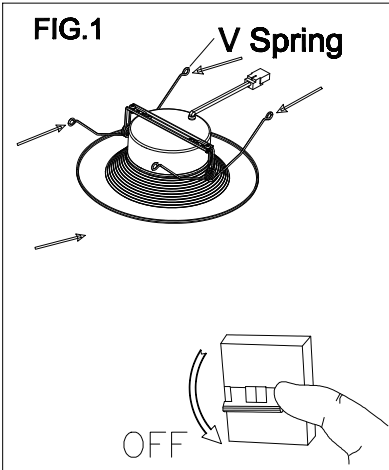
Android, IOS, Bluetooth



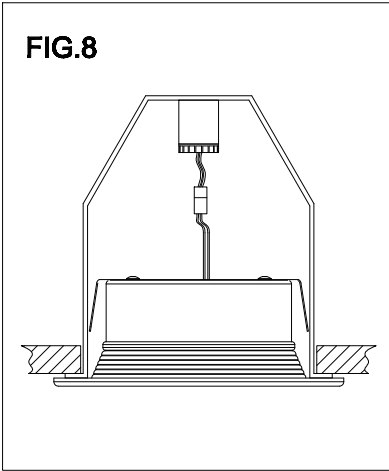
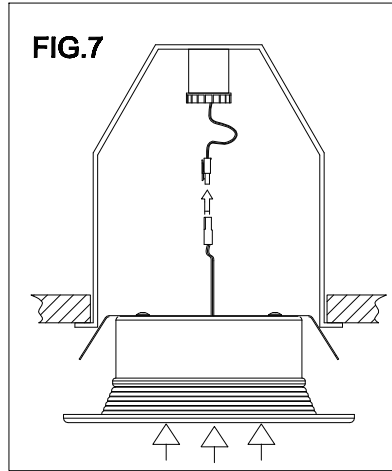
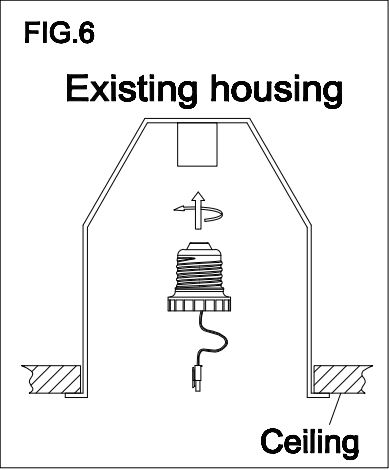
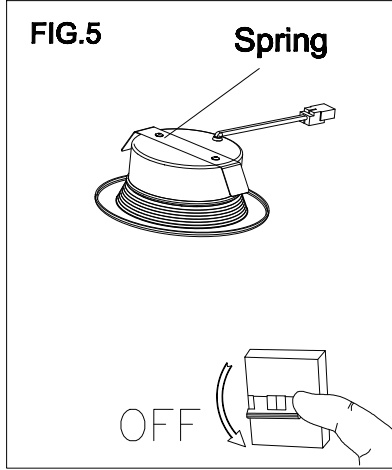
DIMENSIONS (Unit: inch)



6 INCH LED RETROFIT DOWNLIGHT:



4 INCH LED RETROFIT DOWNLIGHT:



PARAMETER

Model	CCT	Lumen(lm) (±10%)	Beam(angle)	LED Type	LED Qty.	Max Power(w) (±10%)	Voltage, Frequency	CRI	Control method
4inch	2700K	450	110°	2835	Warm White: 2835*9 Cold White: 2835*9	9W	AC120V/60Hz	≥90	bluetooth, wifi
	5000K	480		2835	Warm White: 2835*9 Cold White: 2835*9	9W			
	R			2835	2	2W		/	
	G			2835	2	2W			
	B			2835	2	2W			
6inch	2700K	650	110°	2835	Warm White: 2835*14 Cold White: 2835*14	12W	AC120V/60Hz	≥90	bluetooth, wifi
	5000K	750		2835	Warm White: 2835*14 Cold White: 2835*14	12W			
	R			2835	2	2W		/	
	G			2835	2	2W			
	B			2835	2	2W			

NOTICE

1. Please read the specification first, to make sure the service environment matches the condition in the specification before using.
2. Please confirm the applicable power supply before using.
3. Make sure the switch of product is off before connect to the power supply to prevent electric shock.
4. Operation against rules may damage your property even harm to your personal safety.
5. Preliminarily estimate required quantity of LED Downlights, then according to the power rating of single panel light to figure out the total power and design power supply plan.
6. Dangerous high voltage, Non-professionals are not allowed to maintain the products.
7. If the exterior flexible cable or wire is damaged, it must exchange by the supplier, its agent or other similar qualified personnels to avoid dangers.
8. FCC Statement: This equipment has been tested and found to comply with the limits for a Class B digital device, pursuant to part 15 of the FCC Rules. These limits are designed to provide reasonable protection against harmful interference in a residential installation. This equipment generates, uses and can radiate radio frequency energy and, if not installed and used in accordance with the instructions, may cause harmful interference to radio communications. However, there is no guarantee that interference will not occur in a particular installation. If this equipment does cause harmful interference to radio or television reception, which can be determined by turning the equipment off and on, the user is encouraged to try to correct the interference by one or more of the following measures:
 - Reorient or relocate the receiving antenna.
 - Increase the separation between the equipment and receiver.
 - Connect the equipment into an outlet on a circuit different from that to which the receiver is connected.
 - Consult the dealer or an experienced radio/TV technician for help.

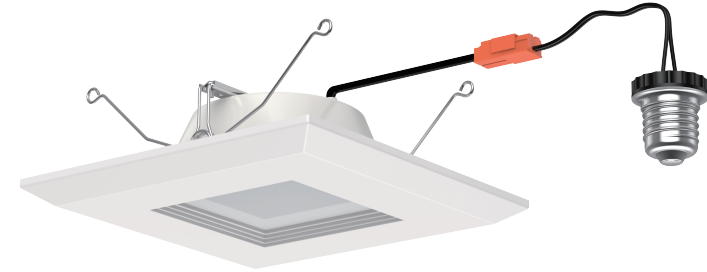
Changes or modifications not expressly approved by the party responsible for compliance could void the user's authority to operate the equipment.

RF Exposure Statement: When using the product, maintain a distance of 20cm from the body to ensure compliance with RF exposure requirements.

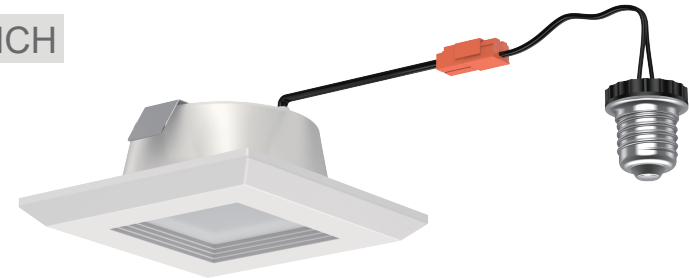
LED Smart Retrofit Downlight

DL213BR Series

6INCH



4INCH



Color Adjustable



Download
Tuya app



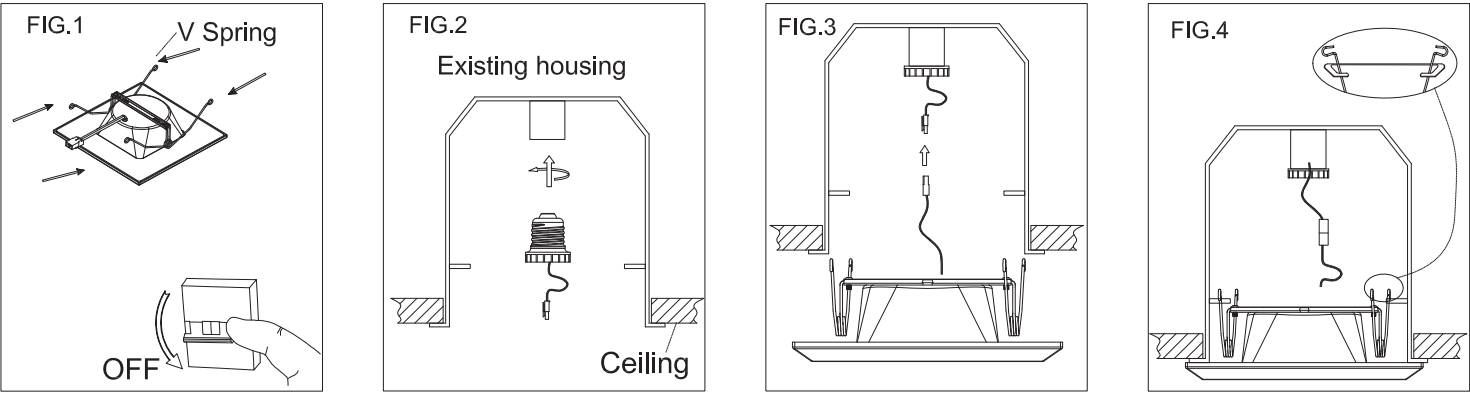
Download
Smart Life app

Android, IOS, Bluetooth

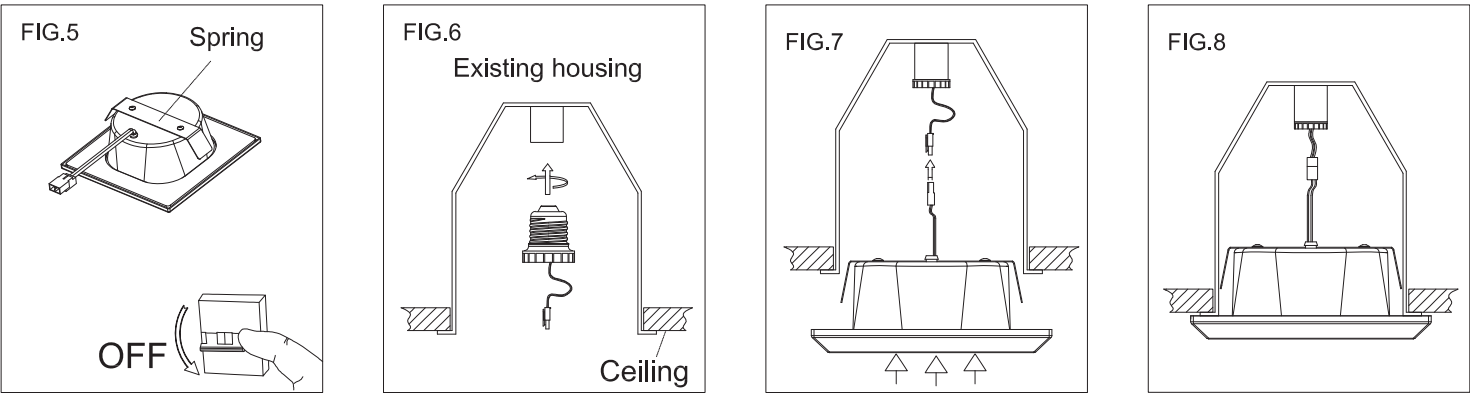


INSTALLATION DRAWING

6 Inch LED Retrofit Downlight:

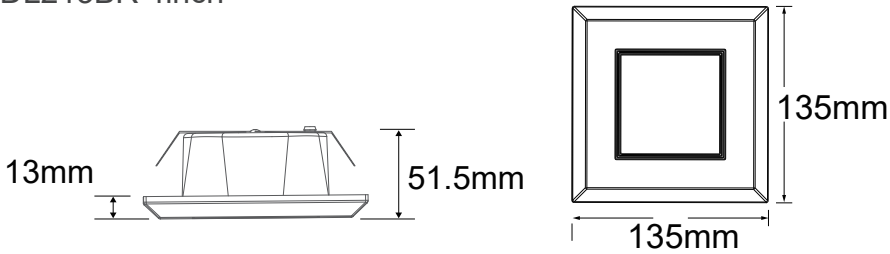


4 Inch LED Retrofit Downlight:



INSTALLATION DRAWING

DL213BR 4inch



DL213BR 6inch

