

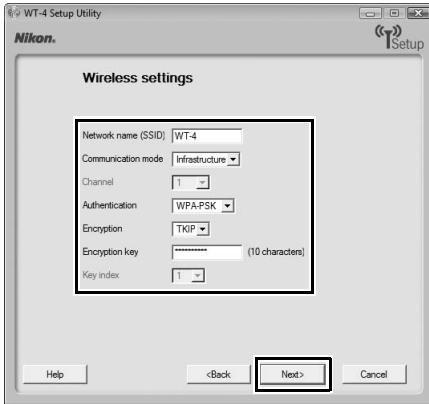
9 Enter the following information and click [Next].

- **Network name (SSID):** Enter a network name or choose from a list of existing networks. Do not change the name if it is supplied automatically.
- **Network type:** Select [Infrastructure (access point)].
- **Authentication:** Choose the authentication used on the network. In infrastructure mode, the camera supports WPA-PSK, WPA2-PSK, open system, and shared key authentication.
- **Encryption:** Choose the encryption used on the network. The options available depend on the authentication used:
Open: None, 64- or 128-bit WEP **Shared:** 64- or 128-bit WEP
WPA-PSK: TKIP, AES **WPA2-PSK:** AES
- **Encryption key:** If the network uses encryption, enter the network key. The number of characters required depends on the type of key used:

	WEP (64-bit)	WEP (128-bit)	TKIP, AES
Number of characters (ASCII)	5	13	8–63
Number of characters (hex)	10	26	64

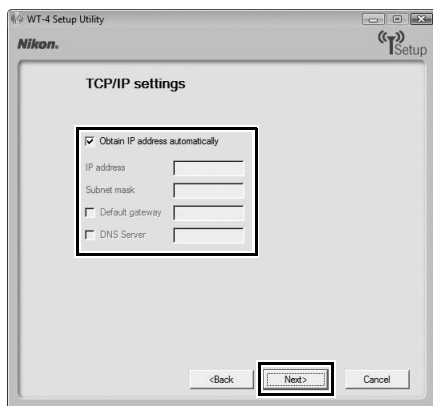
- **Key Index:** Set the key index when [WEP64] or [WEP128] is set for [Encryption]. The default index is [1]. Setting the key index is not necessary when [No encryption] was selected for [Encryption].

Copying Network Profiles to the Camera / Infrastructure Networks



10 Select [Obtain IP address automatically] and click [Next].

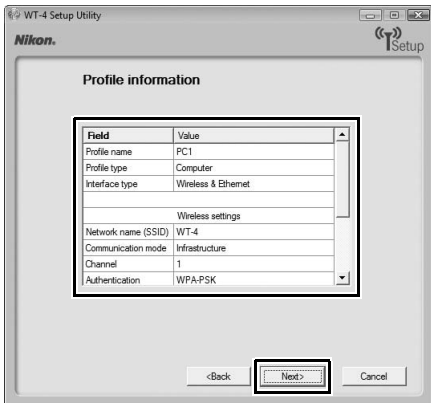
- **Obtain IP address automatically:** Select this option if the network is configured to supply IP addresses automatically. If the network does not include a DHCP server, addresses will be supplied by Auto IP (pg.180).
- **IP address:** If the network is configured for manual IP addressing, enter an IP address for the WT-4.
- **Subnet mask:** If the network is configured for manual IP addressing, enter a subnet mask for the WT-4.
- **Default gateway:** If the network requires a gateway address, select this option and enter the address supplied by the network administrator. This option applies only if [FTP server] is selected for Profile type in Step 7.
- **DNS server:** If a Domain Name Server exists on the network, select this option and enter the address supplied by the network administrator. This option applies only if [FTP server] is selected for Profile type in Step 7.



Configuring the IP Address

If a DHCP server exists within the network, select [Obtain IP address automatically]. If a DHCP server does not exist within the network, deselect [Obtain IP address automatically] (remove the check mark), and enter an IP address different from the IP address configured for your computer or wireless LAN access point.

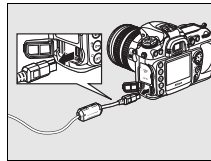
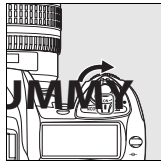
11 Confirm that settings are correct and click [Next].



12 Select [Finish wizard] and click [Next].



- 13** Turn the camera off and disconnect the USB cable.



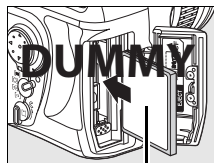
The network profile has now been copied to the camera. Proceed to "Upload pictures to a host computer" (pg.70), "Thumbnail select mode" (pg.79), "PC Mode" (pg.90), "Print Mode" (pg.97).

Upload pictures to a host computer

Connecting the WT-4

Before connecting the WT-4, select [MTP/PTP] for the [USB] option in the camera setup menu (pg.7) and confirm that the computer intended for network connection is started and the user is logged in.

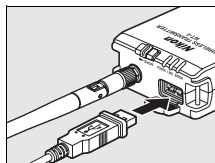
- 1 Turn the camera off and insert the memory card containing the pictures to be sent.
 - If there are multiple card slots, insert the card into any slot.



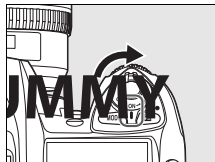
Front

To access the network via Ethernet, connect the Ethernet cable (pg.2). Note that wireless transfer is disabled while an Ethernet cable is connected. Disconnect the Ethernet cable before accessing a wireless network. Turn the **WT-4** off before connecting or disconnecting the Ethernet cable.

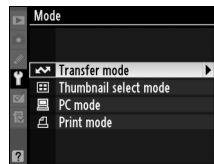
- 2 Open the **WT-4** USB connector cover and connect the USB cable from the WT-4 to the camera USB connector.



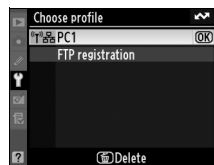
- 3 Turn the camera on.



- 4** Select [Transfer mode] for the [Wireless transmitter] > [Mode] option in the camera setup menu (pg.152).

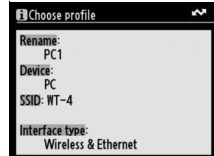


- 5** A list of available connection profiles will be displayed. **Highlight** the desired profile and press **OK**.

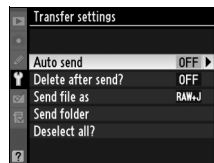


Viewing Profile Information

Press the camera **Info (?)** button to view information on the selected profile.

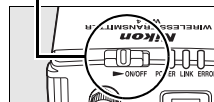


- 6** Select [Wireless transmitter] > [Transfer settings] and adjust settings as described on pages pp.169–170.

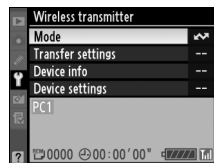


- 7** Turn on the WT-4.

Power switch



- 8** Confirm that the selected profile is displayed in green in the top level of the wireless transmitter menu. For information on what to do if an error is displayed, see "Troubleshooting" (pg.178).

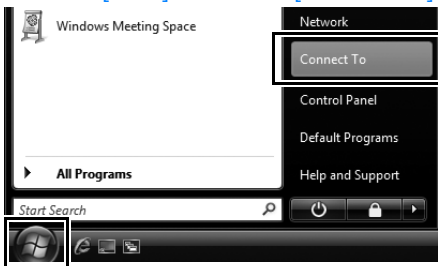


Using the Windows Vista Ad-hoc Connection

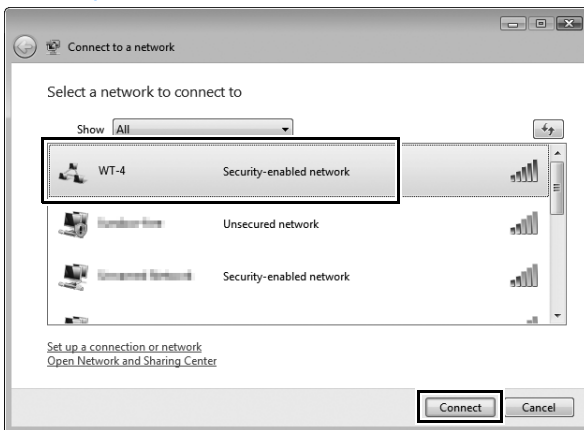
To use the Windows Vista ad-hoc connection, turn on the WT-4 and conduct the following steps on your computer.

Upload pictures to a host computer / Connecting the WT-4

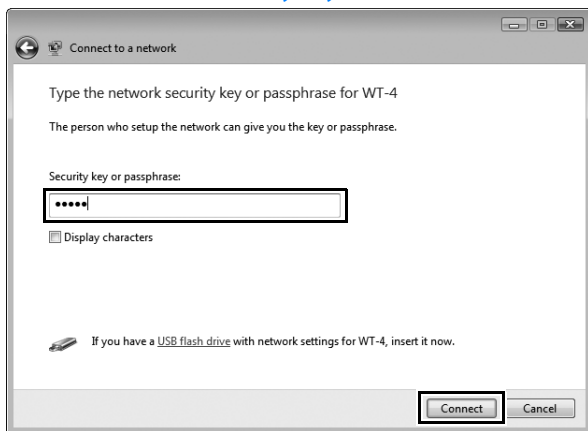
1 Click the [Start] and select [Connect To].



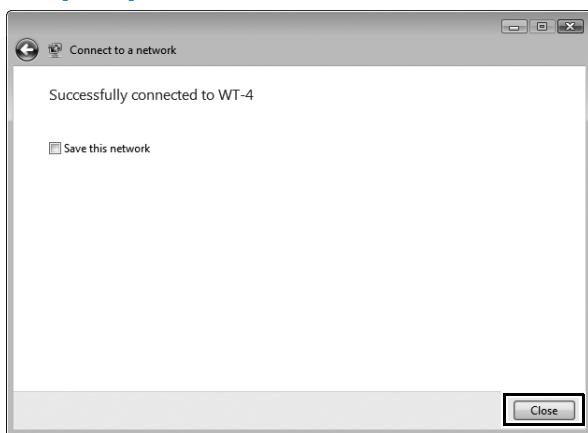
2 Select a preset network name and click [Connect].



3 Enter the network security key and click [Connect].






4 Click [Close].





Upload pictures to a host computer / Connecting the WT-4

Uploading Images

Upload pictures to a host computer / Uploading Images



- 1 Press the  button to view pictures on the memory card. Display the first picture to be sent in single-image playback or highlight it in the thumbnail list.
- 2 While pressing the  button, press the center of the multi selector (D3) or the  button (D300). The image will be marked with a white “send” icon and transmission will begin immediately. During upload, images are marked with a green “sending” icon. Repeat this process to send additional images (pictures will be sent in the order selected).



Images that have been successfully uploaded are marked with a blue “sent” icon. Images can be resent by pressing the center of the multi selector while pressing the  button (D3) or the  button (D300) to change the blue “sent” icon to a white “send” icon.



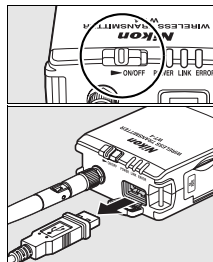
Restrictions to the D300 Retouch Menu

The Nikon D300 transfers selected images when the  button is pressed during image playback (when the WT-4 is not connected, only transfer settings are configured). For this reason, retouch menus such as [Side-by-side comparison] operated by pressing the  button during image playback cannot be used. To use [Side-by-side comparison], configure [Mode] in [Wireless transmitter] to a setting other than [Transfer mode].

3 Turn off the WT-4.

When the **POWER LED** (pg.3) changes from green to yellow and then goes out, detach the USB cable.

- When the connection between the WT-4 and computer is terminated, the folder to which images were transferred automatically opens.
- To change the destination folder, use the Setup Utility (pg.50).



Upload pictures to a host computer / Uploading Images

❑ Interrupting Transmission

To cancel transmission of images marked with a white “send” icon or green “sending” icon, select the images during playback and press the center of the multi selector while pressing the **⏏** button (D3) or the **⏏** button (D300). The icon will be removed. Any of the following actions will also interrupt transmission:

- Turning the camera or WT-4 off
- Selecting [Yes] for [Wireless transmitter] > [Transfer settings] > [Deselect all]

☑ During Upload

Do not remove the memory card or disconnect the Ethernet cable during upload.

✍ Voice Memos

Voice memos can not be uploaded separately, but will be included when associated pictures are transmitted. Voice recordings can not be selected for upload.

✍ Loss of Signal

Transmission may be interrupted if the signal is lost (pg.76). Transmission can be resumed by turning the WT-4 off and then on again.

✍ Turning the Camera Off

“Send” marking will be saved if the camera or WT-4 is turned off while transmission is in progress. Transmission of images marked with a “send” icon will resume when the camera or WT-4 is turned on.

❏ Transfer Status

During playback, the status of images selected for upload is shown as follows:

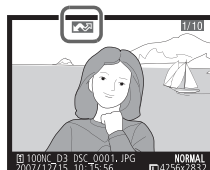
📷: "Send"

Images that have been selected for upload are marked with a white 📷 icon.



📷: "Sending"

A green 📷 icon is displayed during upload.



📷: "Sent"

Images that have been uploaded successfully are marked with a blue 📷 icon.



🗑️ Removing the "Send," "Sending," and "Sent" Icons

"Send," "sending," and "sent" icons can be removed from all images by selecting [Yes] for [Wireless transmitter] > [Transfer settings] > [Deselect all?] (pg.170).

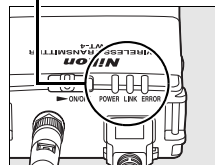
❑ Network Status

The status of the link between the **host** and the WT-4 is shown by the status LEDs and by the display in the top level of the wireless transmitter menu.

The Status LEDs

The **POWER** LED lights when the WT-4 is on. Signal quality is shown by the **LINK** LED: the faster the LED blinks, the better the signal and the faster data can be transmitted. The **ERROR** LED blinks to show that an error has occurred.

Status LEDs



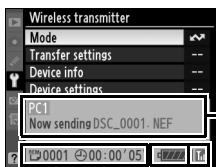
Status	POWER	LINK	ERROR
WT-4 off	● (off)	● (off)	● (off)
USB cable not connected	○ (on)	● (off)	● (off)
Connecting to host	○ (on)	○ (on)	● (off)
Waiting to send or sending data	○ (on)	✱ (blinks)	● (off)
Connection error	✱ (blinks)	● (off)	✱ (blinks)
WT-4 hardware or battery malfunction	✱ (blinks)	✱ (blinks)	✱ (blinks)



Upload pictures to a host computer / Uploading Images

The Status Display

Network status can also be viewed in the top level of the wireless transmitter menu.


Upload pictures to a host computer / Uploading Images



 : The estimated time required to send the remaining images.

Battery level: This icon shows five level of WT-4 battery level.

Status area: The status of the connection to the host. The host name is displayed in green when a connection is established. While files are being transferred, the status display shows "Now sending" followed by the name of the file being sent. Any errors that occur during transfer are also displayed here.

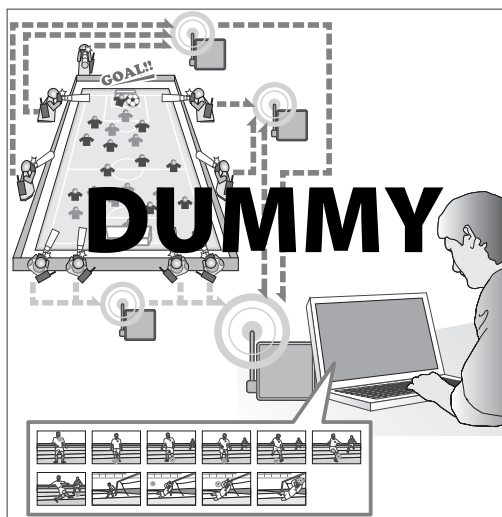
Signal strength: This icon shows wireless signal strength. It is displayed in red when no signal can be detected. For maximum signal strength, ensure a clear line of sight between the WT-4 antenna and the wireless LAN adapter or access point. A  icon is displayed when the WT-4 is connected via Ethernet.

Thumbnail select mode

When shots are taken by selecting [Thumbnail select mode] in [Mode], the recorded images are stored to both the camera's memory card and WT-4 internal memory. At the same time, thumbnails (reduced images) of images stored to WT-4 internal memory are uploaded to the computer and the supplied Thumbnail Selector software lists them as previews. The computer operator then selects required images from this list of thumbnail previews for uploading.

Example of Thumbnail Select Mode

Multiple cameramen using cameras connected to a wireless network by way of the WT-4 are shooting images at a soccer game from various angles. Thumbnails of these recorded images are sent to a computer and are displayed in real-time using the Thumbnail Selector software (displays images recorded by a maximum of five cameras simultaneously). The computer operator selects shots from the displayed thumbnails and downloads them to the computer.



Principal Features of Thumbnail Selector

The principal features of Thumbnail Selector are as follows:

- Displays only a list of thumbnail previews (reduced images) saved to WT-4 internal memory. This function allows the user to immediately check the images, regardless of size of the original images.
- Required images can be selected while viewing the displayed thumbnails and downloaded to computer.
- If multiple cameras are connected to the wireless network, images from a maximum of five cameras can be displayed simultaneously. These images can also be downloaded.

See the online help for the Thumbnail Selector for details on how to use the Thumbnail Selector.

Internal Memory

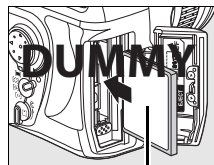
- The WT-4 has an internal memory capacity of 1GB where the most recent images are stored. When the memory capacity is exceeded, images are successively overwritten starting from older images.
- Even if the camera's memory card is replaced, the images stored to WT-4 internal memory will be the same as those images stored in the camera's former memory card. Therefore, if there is no more free space in a memory card, you can replace the memory card without worrying whether or not you have transferred all required images to computer.
- To delete images from internal memory, initialize the internal memory (pg.173). Initializing the internal memory will delete all images stored to internal memory.
- If a large number of shots are taken through continuous shooting, some time may be required until the images are stored to WT-4 internal memory. After shooting, select [Wireless transmitter] in the Setup Menu to confirm the number of shots which have not yet been stored to internal memory.
- While images are being stored to WT-4 internal memory, the camera's access indicator will light. While the memory card access lamp is lit, do not remove the camera or WT-4 batteries, the AC adapter, or USB cable. Doing so may cause the internal memory to malfunction. If the WT-4 power switch is operated while images are being stored to WT-4 internal memory, the power will turn Off after all images have been stored.

Connecting the WT-4

Before connecting the WT-4, select [MTP/PTP] for the [USB] option in the camera setup menu (pg.7) and confirm that the host computer is running.

- 1 Turn the camera off and insert the memory card containing the pictures to be sent.

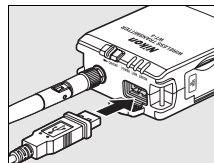
- If there are multiple card slots, insert the card into any slot.



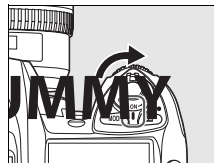
Front

To access the network via Ethernet, connect the Ethernet cable (pg.2). Note that wireless transfer is disabled while an Ethernet cable is connected. Disconnect the Ethernet cable before accessing a wireless network. Turn the **WT-4** off before connecting or disconnecting the Ethernet cable.

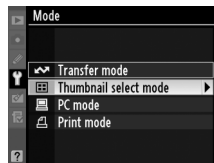
- 2 Open the **WT-4** USB connector cover and connect the USB cable from the WT-4 to the camera USB connector.



- 3 Turn the camera on.



- 4 Select [**Thumbnail Select mode**] for the [Wireless transmitter] > [Mode] option in the camera setup menu (pg.152).

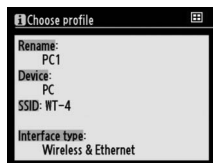


- 5** A list of available connection profiles will be displayed. **Highlight** the desired profile and press **OK**.



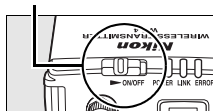
Viewing Profile Information

Press the camera **OK (?)** button to view information on the selected profile.

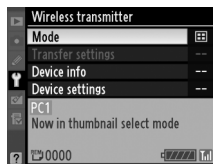


- 6** Turn on the WT-4.

Power switch



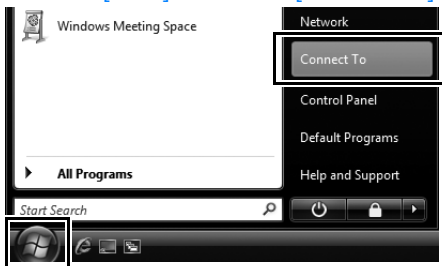
- 7** Confirm that the selected profile is displayed in green in the top level of the wireless transmitter menu. For information on what to do if an error is displayed, see “Troubleshooting” (pp.178).



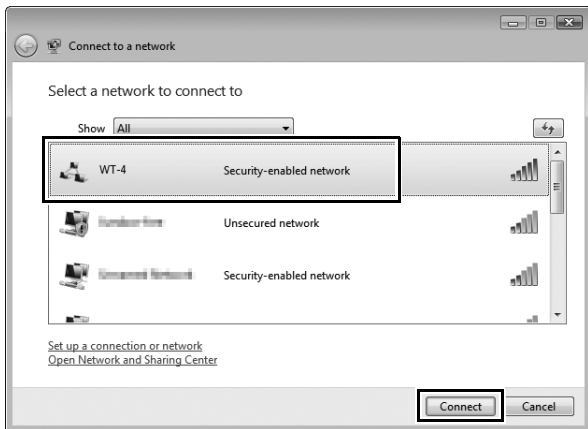
Using the Windows Vista Ad-hoc Connection

To use the Windows Vista ad-hoc connection, turn on the WT-4 and conduct the following steps on your computer.

1 Click the [Start] and select [Connect To].

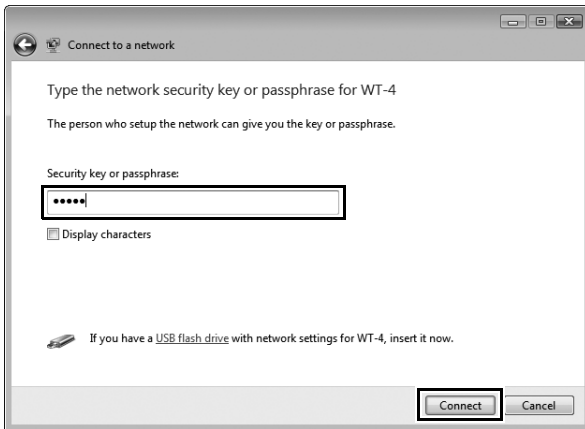


2 Select a preset network name and click [Connect].

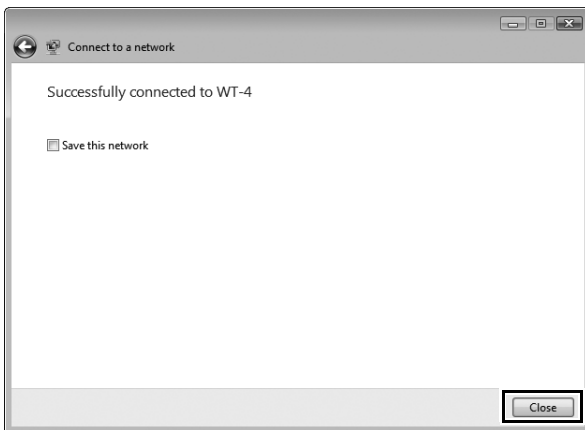


3 Enter the network security key and click [Connect].

Thumbnail select mode / Connecting the WT-4



4 Click [Close].



Downloading Images Using Your Computer

1 Start Thumbnail Selector

- Thumbnail Selector will start automatically once you complete selecting [Thumbnail select mode] for [Wireless transmitter] > [Mode] in the camera setup menu, and connecting the camera to your computer.

2 Choose which camera to transfer photos from

Click on the Source button in the [Source] panel. Thumbnails of the images recorded to WT-4 internal memory are displayed in the thumbnail area.



DUMMY

Thumbnail select mode / Downloading Images Using Your Computer

Manually launching Thumbnail Selector

Windows:

- Double-click the [Thumbnail Selector] shortcut on the desktop.
- Click [Start] and select [Thumbnail Selector] in the program list.

Macintosh:

- Click the [Thumbnail Selector] icon in the Dock (if available).
- Open the [Applications] > [Nikon Software] > [Thumbnail Selector] folder and double-click the [Thumbnail Selector] icon.

3 Assign a Name and/or Label to each camera

Assign a camera name or label for the Source button. The same label will appear for the thumbnails.



DUMMY



DUMMY

4 Take photographs

Thumbnails of recorded images are displayed on your computer.

5 Click [Start Transfer]

When [Start Transfer] is selected, transfer is conducted as thumbnails are selected.



DUMMY

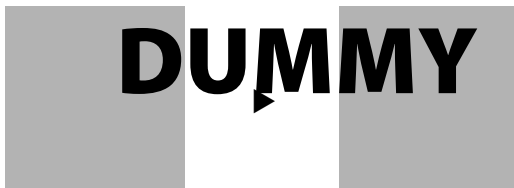
After clicking the [Start Transfer] button, the button will change to the [Stop Transfer] button.

The Camera Clock

When the [Start Transfer] button is selected (turned “on”), the internal date and time of the camera connected to the same networks as the computer will automatically synchronize with the date and time set in the computer. If you do not want this to happen, deselect (remove the check mark from the icon next to) [Synchronize camera date and time to computer when camera is connected (supported cameras only)] option in the [Preferences] panel.

6 Transferring images

Among the thumbnails displayed in the thumbnail area, click the thumbnail of the photo that you want to transfer to the computer.



The selected thumbnail will be highlighted.

Click the highlighted thumbnail again, or press the Space key on the keyboard.



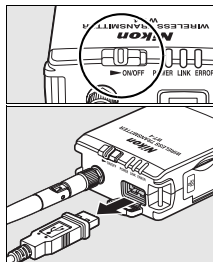
The transfer status icon on the highlighted thumbnail will be displayed with a check mark that indicates that the photo of the highlighted thumbnail is added in the transfer queue. At the same time, the transfer process will begin automatically.

Default settings will transfer images to the [WT-4] folder in [Pictures] (Windows Vista/Mac OSX) or [My Pictures] (Windows XP).

See the online help for the Thumbnail Selector for details on how to use the Thumbnail Selector.

7 Turn off the WT-4

After transfer ends, turn off the WT-4. When the **POWER LED** (pg.3) changes from green to yellow and then goes out, detach the USB cable.



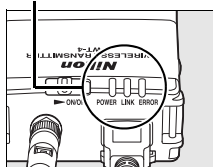
❑ Network Status

The status of the link between the **host** and the WT-4 is shown by the status LEDs and by the display in the top level of the wireless transmitter menu.

The Status LEDs

The **POWER LED** lights when the WT-4 is on. Signal quality is shown by the **LINK LED**: the faster the LED blinks, the better the signal and the faster data can be transmitted. The **ERROR LED** blinks to show that an error has occurred.

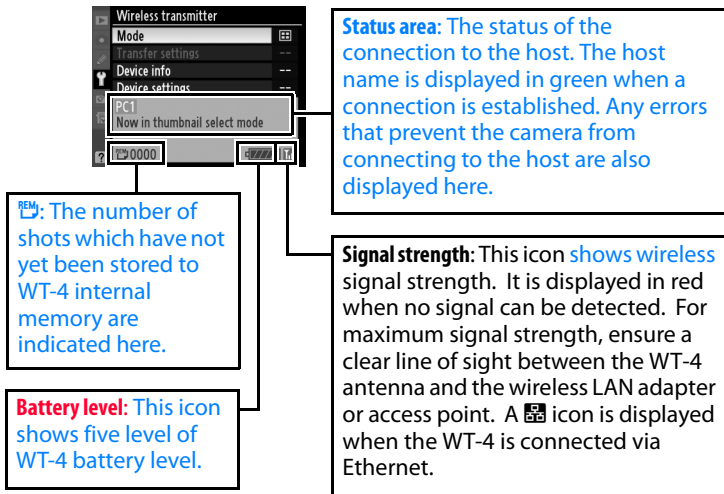
Status LEDs



Status	POWER	LINK	ERROR
WT-4 off	● (off)	● (off)	● (off)
USB cable not connected	○ (on)	● (off)	● (off)
Connecting to host	○ (on)	○ (on)	● (off)
Waiting to send or sending data	○ (on)	✳ (blinks)	● (off)
Connection error	✳ (blinks)	● (off)	✳ (blinks)
WT-4 hardware or battery malfunction	✳ (blinks)	✳ (blinks)	✳ (blinks)

The Status Display

Network status can also be viewed in the top level of the wireless transmitter menu.



Thumbnail select mode / Downloading Images Using Your Computer