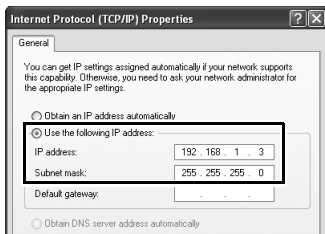


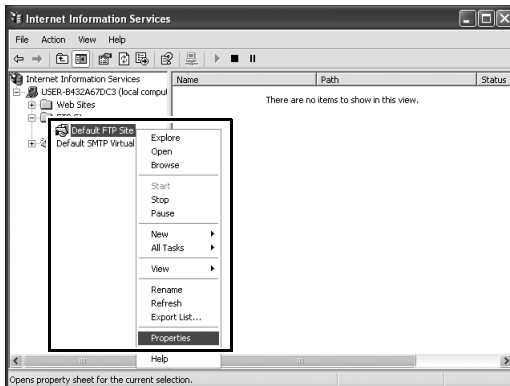
- 4 Enter an IP address and sub-net mask for the ftp server and click [OK].



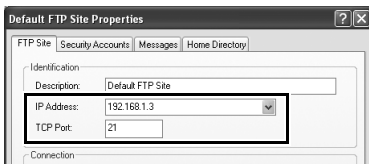
- 5 Go to the [System and Maintenance] > [Administrative Tools] control panel and open the [Internet Information Services] console.



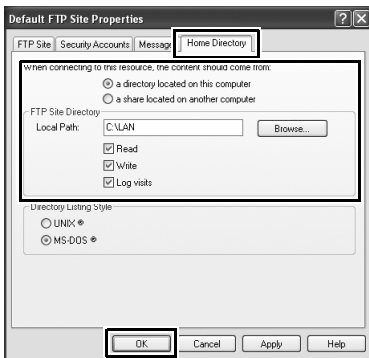
- 6 Right-click [Default FTP Site] and select [Properties] from the menu that appears.



- 7** Select the IP address entered in Step 4 and enter a [TCP Port] number. The port number is normally 21.



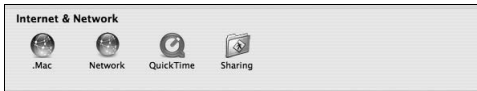
- 8** Open the [Home Directory] tab and select [a directory located on this computer]. The root directory for images uploaded to the ftp server is listed in the [Local Path] text box; choose a folder and select [Read], [Write], and [Log visits]. Click [OK] to close the properties dialog.



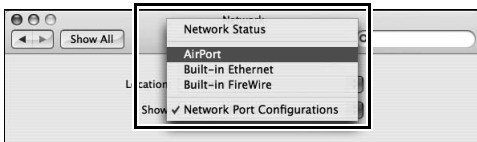
This completes ftp server setup. Proceed to “Copying Network Profiles to the Camera” (pg.119).

Macintosh

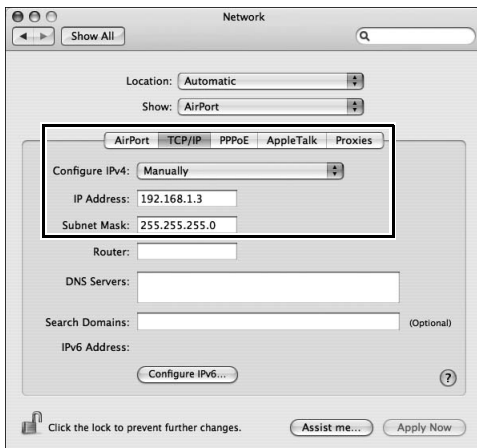
- 1 Open [System Preferences] and click [Network].



- 2 Select [AirPort] from the [Show] menu.

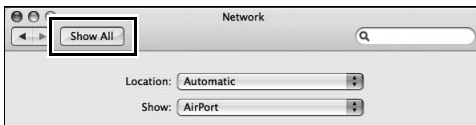


- 3 Select [Manually] from the [Configure IPv4] menu and enter an IP address and sub-net mask.

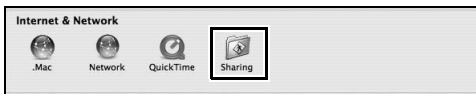


Make a note of this address. It will be needed to set up the WT-4.

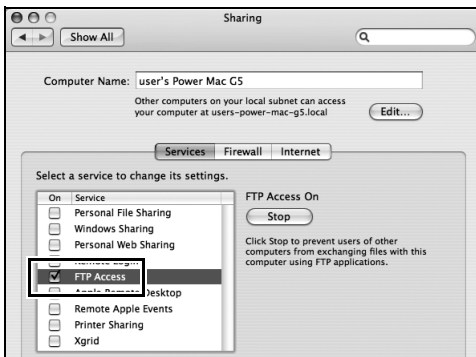
4 Click [Show All] to return to the System Preferences dialog.



5 Click [Sharing].



6 Select [Services] and enable [FTP Access].

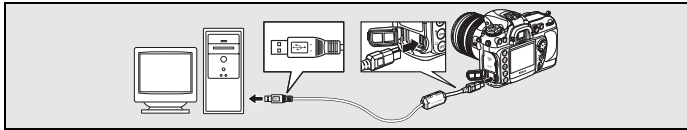


This completes ftp server setup. Proceed to "Copying Network Profiles to the Camera" (pg.119).

Copying Network Profiles to the Camera

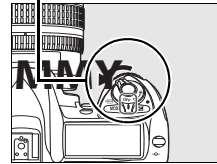
Ad Hoc Networks

- 1 Connect the UC-E4 as shown **below**.



- 2 Turn the camera on.

Power switch



- 3 Turn the computer on and start the WT-4 Setup Utility.

- **Windows:** Double-click the [WT-4 Setup Utility] icon on the desktop
- **Macintosh:** Click the [[WT-4WirelessSetup](#)] icon in the Dock.

4 The dialog shown below will be displayed; click [Next].

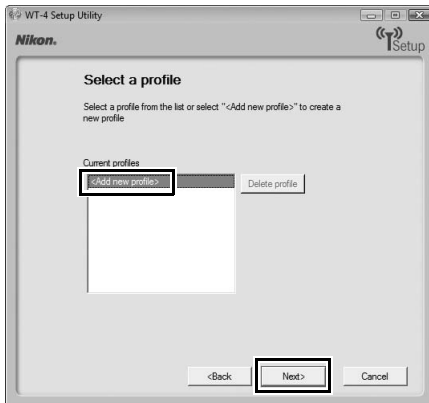


5 Select [Add/Edit profiles] and click [Next].



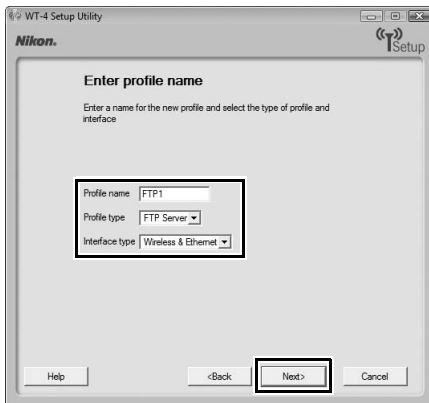
Copying Network Profiles to the Camera / Ad Hoc Networks

6 Select [Add new profile] and click [Next].



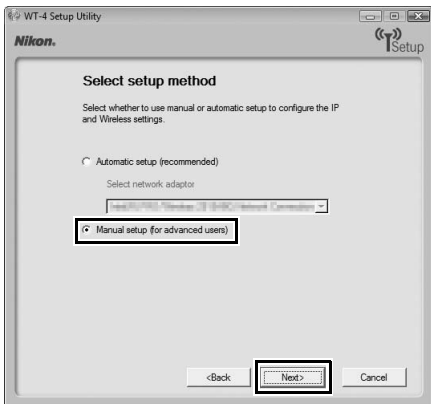
7 Enter the following information and click [Next]:

- **Profile name:** Enter a name of up to 16 characters.
- **Profile type:** Choose [FTP Server].
- **Interface type:** Choose [Wireless & Ethernet] for networks that include wireless, or [Ethernet only] for Ethernet-only networks.



8 Select [Manual setup] and click [Next].

Copying Network Profiles to the Camera / Ad Hoc Networks



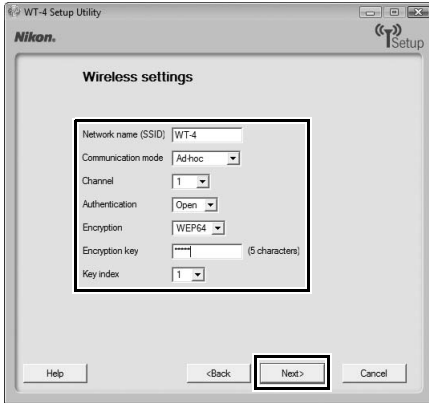
9 Enter the following information and click [Next].

- **Network name (SSID):** Enter a network name or choose from a list of existing networks. Do not change the name if it is supplied automatically.
- **Network type:** Select [Ad hoc].
- **Channel:** Select a communication channel. However, if the network name (SSID) is consistent, a predetermined channel separate from the channel set here may be applied.
- **Authentication:** Choose the type of authentication used on the network. In ad-hoc mode, the camera supports open system and shared key authentication.
- **Encryption:** The type of encryption used on the network. Choose from [None] (open networks only), 64-bit WEP, and 128-bit WEP.
- **Encryption key:** If the network uses encryption, enter the network key. The number of characters required depends on the type of key used:

	WEP (64-bit)	WEP (128-bit)
Number of characters (ASCII)	5	13
Number of characters (hex)	10	26

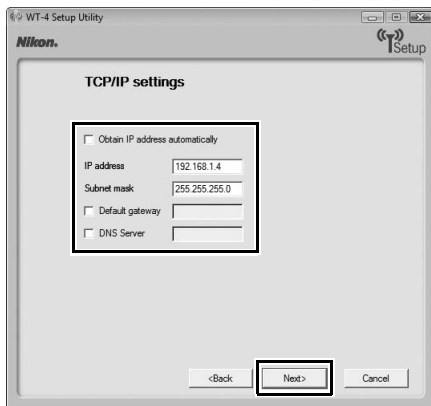
- **Key Index:** Set the key index when [WEP64] or [WEP128] is set for [Encryption]. The default index is [1]. Setting the key index is not necessary when [No encryption] was selected for [Encryption].

Copying Network Profiles to the Camera / Ad Hoc Networks



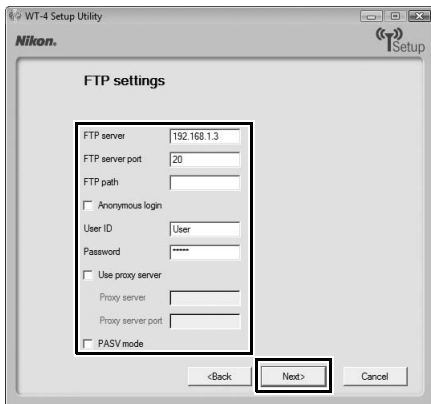
10 Enter the following information and click [Next].

- **Obtain IP address automatically:** Select this option if the network is configured to supply IP addresses automatically. If the network does not include a DHCP server, addresses will be supplied by Auto IP (pg.180).
- **IP address:** If the network is configured for manual IP addressing, enter an IP address for the WT-4.
- **Subnet mask:** If the network is configured for manual IP addressing, enter a subnet mask for the WT-4.
- **Default gateway:** If the network requires a gateway address, select this option and enter the address supplied by the network administrator. This option applies only if [FTP server] is selected for Profile type in Step 7.
- **DNS Server:** If a Domain Name Server exists on the network, select this option and enter the address supplied by the network administrator. This option applies only if [FTP server] is selected for Profile type in Step 7.

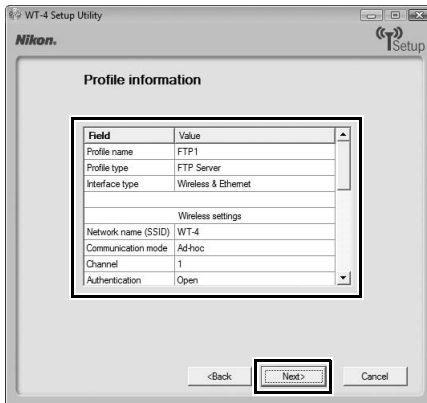


11 Enter ftp settings and click [Next].

- **FTP server:** Enter the URL or IP address of the ftp server.
- **FTP server port:** Enter the port number for the ftp server. The default port is 21.
- **FTP path:** Choose the folder to which pictures will be uploaded. If no path is specified, pictures will be uploaded to the home directory.
- **Anonymous login:** Select this option for anonymous login, or leave this option unchecked to supply a [User ID] and [Password].
- **Use proxy server:** If a proxy server is required for ftp, select this option and enter the server name and port number for the proxy server.
- **PASV mode:** Select this option to use PASV mode.



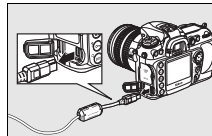
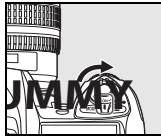
12 Confirm that settings are correct and click [Next].



13 Select [Finish wizard] and click [Next].



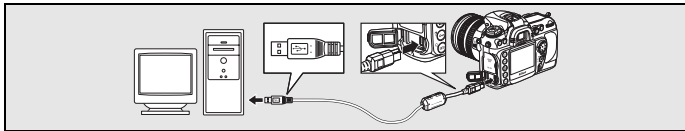
- 14** Turn the camera off and disconnect the USB cable.



The network profile has now been copied to the camera. Proceed to “Connecting to the FTP Server” (pg.140).

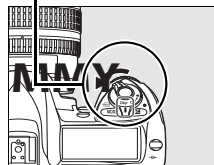
Infrastructure Networks

- 1 Connect the UC-E4 as shown **below**.



- 2 Turn the camera on.

Power switch



- 3 Turn the computer on and start the WT-4 Setup Utility.

- **Windows:** Double-click the [WT-4 Setup Utility] icon on the desktop
- **Macintosh:** Click the [[WT-4WirelessSetup](#)] icon in the Dock.

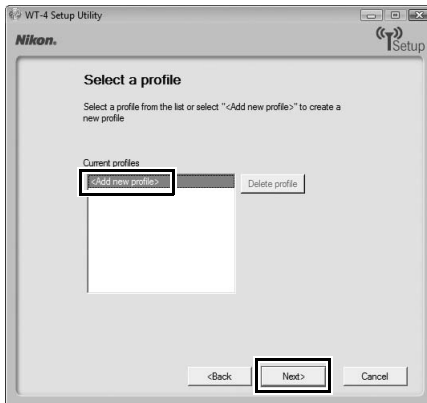
4 The dialog shown below will be displayed; click [Next].



5 Select [Add/Edit profile] and click [Next].

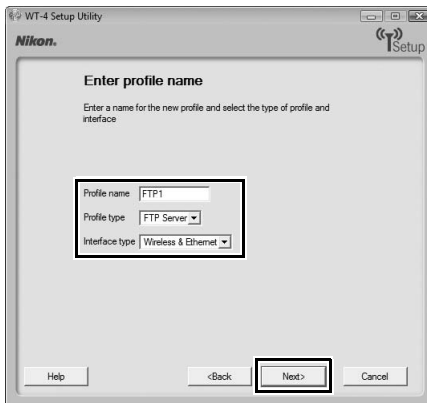


6 Select [Add new profile] and click [Next].



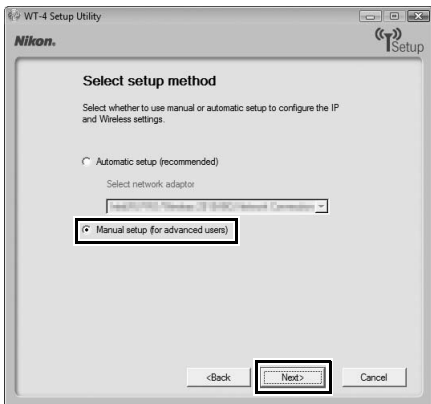
7 Enter the following information and click [Next]:

- **Profile name:** Enter a name of up to 16 characters.
- **Profile type:** Choose [FTP Server].
- **Interface type:** Choose [Wireless & Ethernet] for networks that include wireless, or [Ethernet only] for Ethernet-only networks.



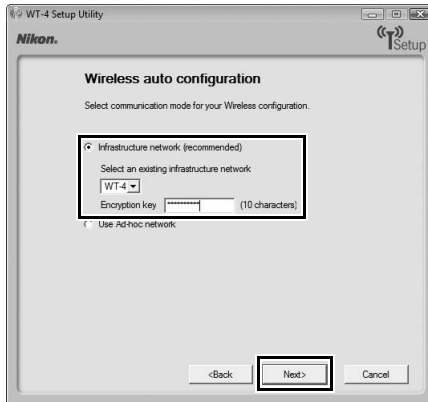
8 Select [Manual setup] and click [Next].

Copying Network Profiles to the Camera / Infrastructure Networks



"Automatic Setup"

Choose [Automatic setup (recommended)] when using a new network for the first time. The following dialog will be displayed; if multiple infrastructure networks have been setup, select a setting which will be used for network connection and click [Next], to proceed to Step 11 (pg.137).



[Automatic setup] cannot be selected in the following cases:

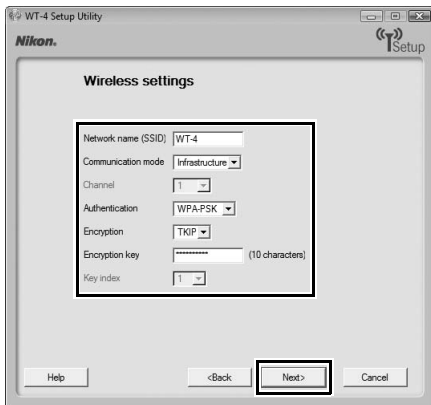
- When editing a preset network
- When using a third party network adapter
- When the computer network is set to a static IP address
- When the OS is Windows XP SP1 or Mac OSX

9 Enter the following information and click [Next].

- **Network name (SSID):** Enter a network name or choose from a list of existing networks. Do not change the name if it is supplied automatically.
- **Network type:** Select [Infrastructure (access point)].
- **Authentication:** Choose the authentication used on the network. In infrastructure mode, the camera supports WPA-PSK, WPA2-PSK, open system, and shared key authentication.
- **Encryption:** Choose the encryption used on the network. The options available depend on the authentication used:
Open: None, 64- or 128-bit WEP **Shared:** 64- or 128-bit WEP
WPA-PSK: TKIP, AES **WPA2-PSK:** AES
- **Encryption key:** If the network uses encryption, enter the network key. The number of characters required depends on the type of key used:

	WEP (64-bit)	WEP (128-bit)	TKIP, AES
Number of characters (ASCII)	5	13	8–63
Number of characters (hex)	10	26	64

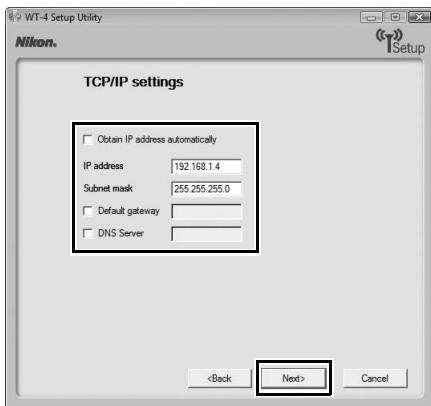
- **Key Index:** Set the key index when [WEP64] or [WEP128] is set for [Encryption]. The default index is [1]. Setting the key index is not necessary when [No encryption] was selected for [Encryption].



Copying Network Profiles to the Camera / Infrastructure Networks

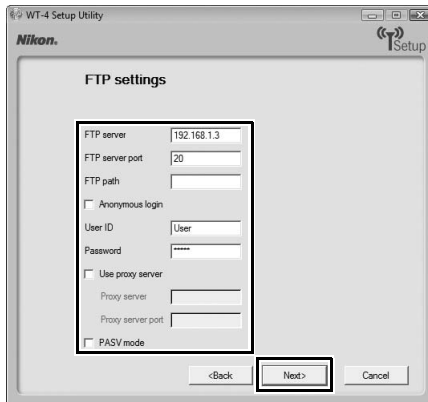
10 Enter the following information and click [Next].

- **Obtain IP address automatically:** Select this option if the network is configured to supply IP addresses automatically. If the network does not include a DHCP server, addresses will be supplied by Auto IP (pg.180).
- **IP address:** If the network is configured for manual IP addressing, enter an IP address for the WT-4.
- **Subnet mask:** If the network is configured for manual IP addressing, enter a subnet mask for the WT-4.
- **Default gateway:** If the network requires a gateway address, select this option and enter the address supplied by the network administrator. This option applies only if [FTP server] is selected for Profile type in Step 7.
- **DNS Server:** If a Domain Name Server exists on the network, select this option and enter the address supplied by the network administrator. This option applies only if [FTP server] is selected for Profile type in Step 7.

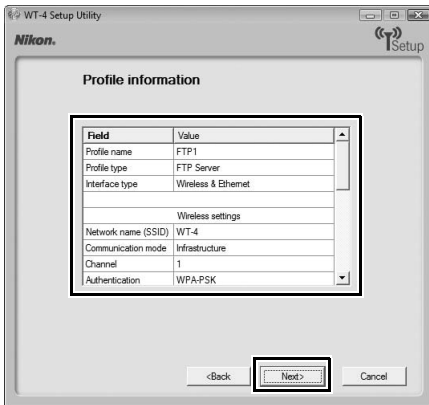


11 Enter ftp settings and click [Next].

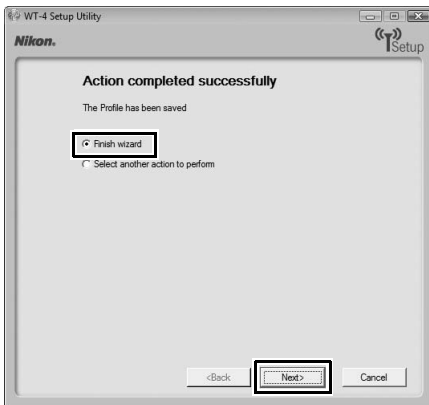
- **FTP server:** Enter the URL or IP address of the ftp server.
- **FTP server port:** Enter the port number for the ftp server. The default port is 21.
- **FTP path:** Choose the folder to which pictures will be uploaded. If no path is specified, pictures will be uploaded to the home directory.
- **Anonymous login:** Select this option for anonymous login, or leave this option unchecked to supply a [User ID] and [Password].
- **Use proxy server:** If a proxy server is required for ftp, select this option and enter the server name and port number for the proxy server.
- **PASV mode:** Select this option to use PASV mode.



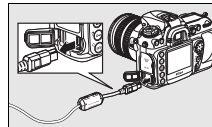
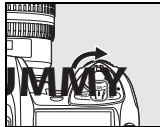
12 Confirm that settings are correct and click [Next].



13 Select [Finish wizard] and click [Next].



- 14 Turn the camera off and disconnect the USB cable.



The network profile has now been copied to the camera. Proceed to "Connecting to the FTP Server" (pg.140).