

FCC ID: N9B213SUMI2009

27Mhz

MADE IN CHINA

This device complies with part 15 of the FCC Rules. Operation is subject to the following two conditions.

- (1) this device may not cause harmful interference, and
- (2) this device must accept any interference received, including interference that may cause undesired operation.

⚠ WARNING: Changes or modifications to this unit not expressly approved by the party responsible for compliance could void the user's authority to operate the equipment

NOTE: This equipment has been tested and found to comply with the limits for a Class B digital device, pursuant to Part 15 of the FCC Rules. These limits are designed to provide reasonable protection against harmful interference in a residential installation. This equipment generates, uses and can radiate radio frequency energy and, if not installed and used in accordance with the instructions, may cause harmful interference to radio communications. However, there is no guarantee that interference will not occur in a particular installation. If this equipment does cause harmful interference to radio or television reception, which can be determined by turning the equipment off and on, the user is encouraged to try to correct the interference by one or more of the following measures:

- Reorient or relocate the receiving antenna.
- Increase the separation between the equipment and receiver.
- Connect the equipment into an outlet on a circuit different from that to which the receiver is connected.
- Consult the dealer or an experienced radio/TV technician for help.

KEEP THESE INSTRUCTIONS FOR FUTURE REFERENCE — DO NOT DISCARD

Questions? Comments? Please contact us. We can help!
1-888-742-2484 or go to www.unclemilton.com

© 2009 UMI. All rights reserved.
® and TM designate U.S. trademarks of Uncle Milton Industries, Inc.
Westlake Village, CA 91362.
Printed in China.
Product and colors may vary.

**Uncle
Milton**

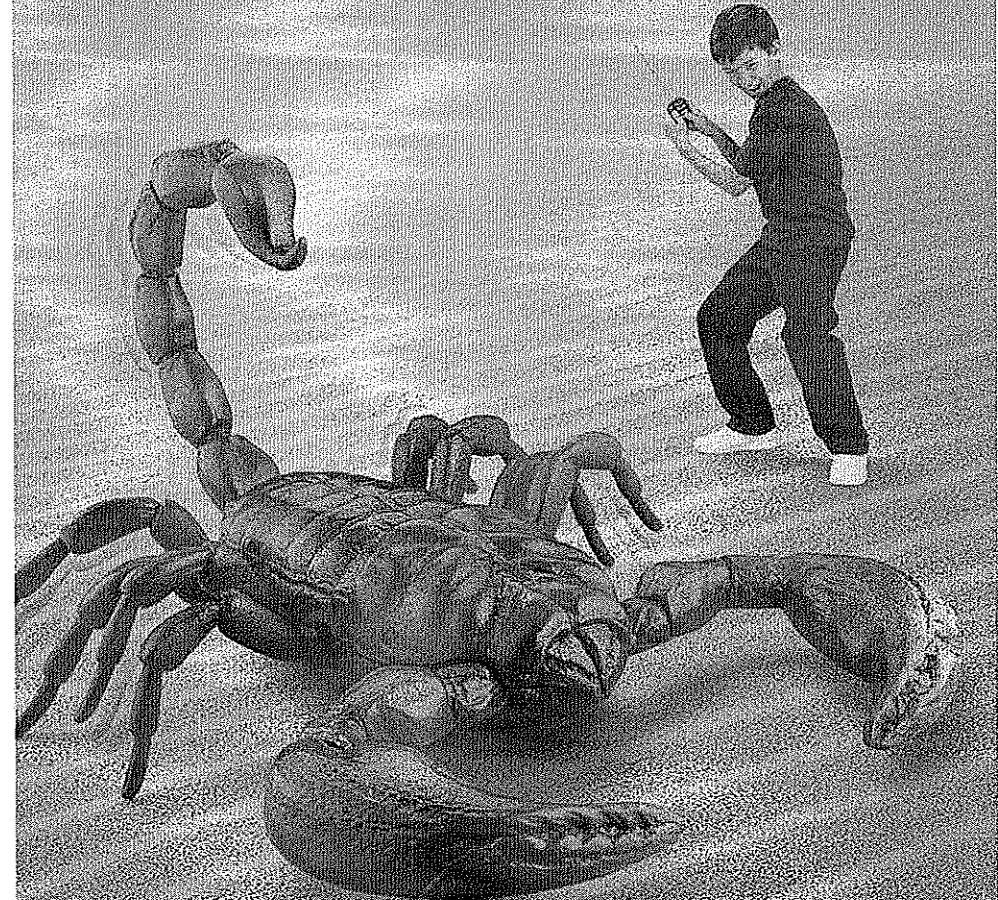
2135-0250-0309

AGES 6 AND UP

2135

RC Scorpion

Remote Control Scorpion
with Crawling Action



AAA/LR03

x4

Batteries not included.
Requires 4 AAA/LR03 batteries.

**Uncle
Milton**
Explore It!

Scorpions

Scorpions are arthropods (ARE-throw-pods), animals that have jointed limbs and segmented bodies. Did you know that there are more than two thousand species of scorpions and that they can be found on all continents except Antarctica? Scorpions can be one-half inch to a whopping seven inches long. All scorpions have a slender body and segmented tail that arches over the back. At the end of the tail is a bulb-like gland and stinger containing poisonous venom.

Each species of scorpion has its own kind of venom. While some kinds of venom may be as harmless as a bee sting, many other kinds are strong enough to kill a human! One thing all scorpions have in common is that their

stings hurt! Just because a scorpion is small doesn't mean it isn't dangerous. Baby scorpions are born with the same venomous stinger as adult scorpions. And smaller species are usually more dangerous than larger species!

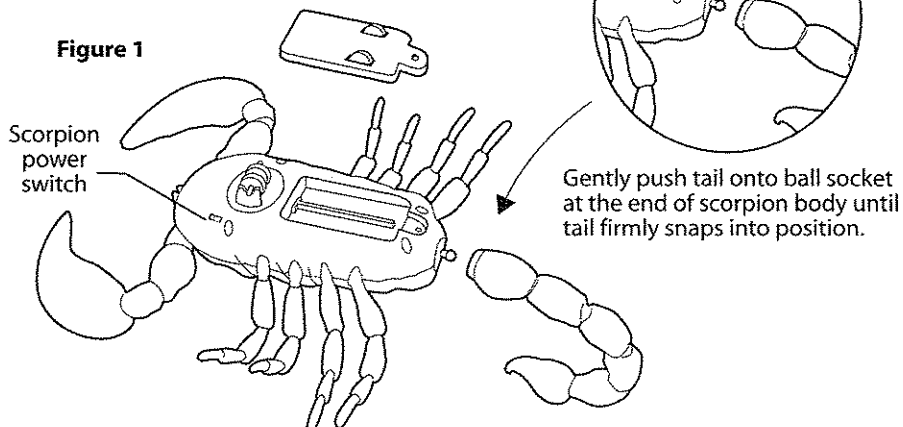
Besides a stinger, scorpions have eight legs, two pincer-bearing arms, and two to five additional pairs of eyes. They are well-equipped to defend themselves!

Scorpions typically eat insects. But when food is scarce, they can slow their metabolism to one-third the normal rate. By doing this, they use minimal oxygen and can live on as little as one insect per year! This is one of the reasons scorpions are able to survive in some of the world's most extreme environments.

Installing batteries into scorpion

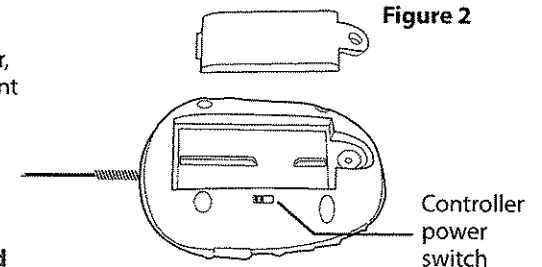
Tool required - Small Phillips head screwdriver .

1. Using a Phillips head screwdriver, remove the battery compartment cover from the bottom of the scorpion (see Figure 1).
2. Insert 2 "AAA"/"LR03" batteries and replace cover. **Make sure the "+" and "-" ends are inserted correctly, as indicated in the battery compartment.**



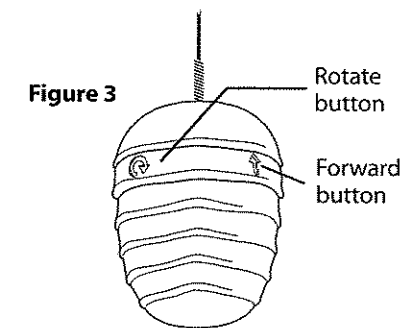
Installing batteries into controller

1. Using a Phillips head screwdriver, remove the battery compartment cover from the back of the controller (see Figure 2).
2. Insert 2 "AAA"/"LR03" batteries and replace cover. **Make sure the "+" and "-" ends are inserted correctly, as indicated in the battery compartment.**



Using your RC Scorpion

1. Turn the power switches to the "ON" position on both the controller and scorpion (see Figures 1 and 2).
2. Move the scorpion forward or make it turn using the buttons on the controller (see Figure 3).



Note: For best performance use your RC Scorpion on a smooth flat surface like a hardwood floor.

BATTERY SAFETY INFORMATION

- Batteries are small objects. Batteries must be replaced by an adult.
- Follow the polarity (+/-) diagram in the battery compartment.
- Promptly remove dead batteries from the toy.
- Dispose of used batteries properly.
- Remove batteries for prolonged storage.
- Only batteries of same or equivalent type as recommended are to be used.
- DO NOT incinerate used batteries.
- DO NOT dispose of batteries in fire, as batteries may explode or leak.
- DO NOT mix old and new batteries or types of batteries (i.e. alkaline/standard).
- DO NOT use rechargeable batteries.
- DO NOT recharge non-rechargeable batteries.
- DO NOT short-circuit the supply terminals.