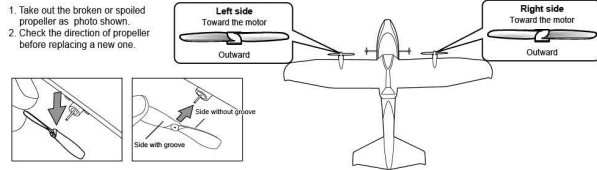


4 ENGLISH
Replacement of propeller

1. Take out the broken or spoiled propeller as photo shown.
2. Check the direction of propeller before replacing a new one.



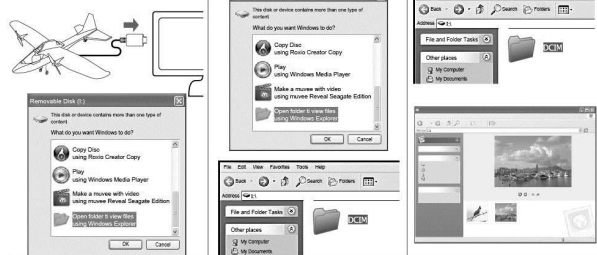
Photos taking / Video recording

Press the photographing button to take photo through the camera on the Aeroplane. The status indicator will flash when a photo is taken. Press the video recording button to start recording video. Press the button again to stop recording. The status indicator will turn on during recording. When the internal memory is full, the status indicator flashes continuously. Move remove the saved data from the internal memory before taking photos again.

Transferring files to computer

Opening stored photos and videos

1. Be sure your Aeroplane has been switched OFF. Connect the Aeroplane to a computer through the USB cable and switch it on. A pop-up window will appear. Browse the Aeroplane (as an USB device)
2. If you have insert Micro-SD card (Not included) 2 pop-up window appear at the same time.



Inserting and removing the MicroSD

1. Open the cover.
2. Insert the MicroSD card (not included) with the gold-colored contacts facing up.
3. Push gently the card until the card disengages from the Aeroplane, and then pull it out of the slot.

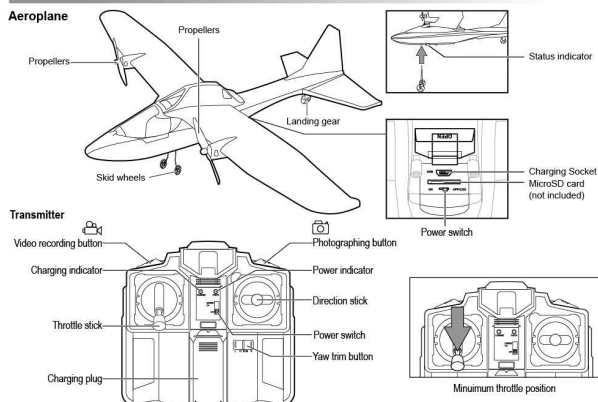


Note: Memory card slot: MicroSD card (not included), up to 32GB

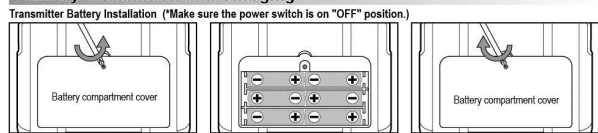
Troubleshooting

Symptom	Cause	Correction
The Aeroplane does not response.	- The Aeroplane and/or the transmitter is switch off ("OFF"). - The battery of the Aeroplane is weak.	- Set the power switch to "ON". - Recharge the battery of the Aeroplane.
1. The video photo was not recorded. 2. The status indicator flashes continuously.	- The battery of the Aeroplane is weak. - The built-in memory is full.	- Recharge the battery of the Aeroplane. - Move remove some photos/videos.

2 ENGLISH
Part Identification

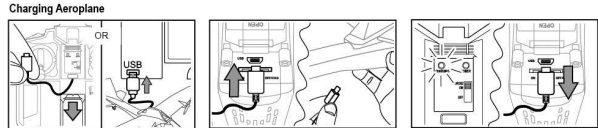


Battery Installation and Charging



1. Open the battery compartment by loosening the screw.
2. Insert 6 AA batteries in the battery compartment with correct polarity.
3. Close the battery compartment.

Note: When the Power indicator on the transmitter starts blinking (fast), replace the batteries. The transmitter receives a signal from the Aeroplane when the battery is low. The Charging indicator on the transmitter starts blinking, recharge the Aeroplane.



1. Pull out the cover and take the charging plug from the transmitter or connect the USB cable to a USB socket.
2. Switch off the Aeroplane. Insert the charging plug into the charging socket on the Aeroplane.
3. Switch on the transmitter. The charging process will begin automatically and the green charging indicator will light up. Unplug the charging plug after the charging indicator turns off, charging is completed.

Note: 1. The Aeroplane can operate for about 4 - 5 minutes per every 40 - 50 minutes charging.
2. Before recharging the battery, wait 10 - 15 minutes for it to cool down.

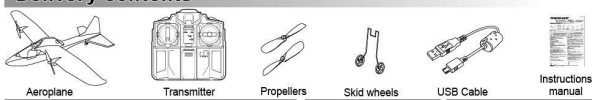
Peregrine Eye VC

Age classification: not suitable for children under 8 years of age.
Age classification: nicht geeignet für Kinder unter 8 Jahren.
Categoría de edad: no conviene para niños menores de 8 años.
Categoría de idade: não convém para crianças menores de 8 anos.
Clasificación de edad: Este producto no es apto para niños menores de 8 años.
Etichetare de vârstă: nu este potrivit pentru copii mai mici de 8 ani.

For ages 10+
Ab 10 Jahre
A partir de 10 ans
Izletni vek od 10 let
Dai 10 anni in su

WARNING!
CHOKING HAZARD - Small Parts.
Not for children under 3 years.

Delivery contents



Safety precautions
Warning: Consent or modifications to this product not expressly approved by the party responsible for compliance could void the user's authority to operate the product.
The transmitter-charger is tailor-made for charging the LiPo battery in the aeroplane. Do not use it to charge any other batteries.

Special notes to adults:
- Only operate the toy outdoors under adult supervision.
- The user's assistance is recommended when installing or replacing batteries.
Care and Maintenance:
- Always remove batteries from the toy when it is not being used for a long period of time. (Transmitter only)
- Wipe the toy gently with a clean cloth.
- Keep the toy away from direct heat.
- Do not submerge the toy into water that can damage the electronic electronics.
Battery warnings:
- Non-rechargeable batteries are not to be recharged.
- Rechargeable batteries are to be removed (Transmitter only).
- Rechargeable batteries are only to be charged under adult supervision.
- Different types of batteries or new and used batteries are not to be mixed. (Transmitter only).
- Only batteries of the same or equivalent type as recommended are to be used.
- Batteries are to be inserted with correct polarity.
- Exhausted batteries are to be removed from the toy. (Transmitter only).
- The supply terminals are not to be short-circuited.
- Do not mix old and new batteries. (Transmitter only).
- Do not mix alkaline (carbon-zinc) or rechargeable (nickel-cadmium) batteries. (Transmitter only).
This toy is equipped with a LiPo rechargeable battery, please pay attention to the following cautions for safety use:
- Do not dispose the battery in fire or heat.
- Do not use or leave the battery near a heat source such as fire or heater.
- Do not strike or throw the battery against hard surface.
- Do not immerse the battery in water, and keep the battery in a cool dry environment.
- When recharging, only use the battery charger specifically for that purpose.
- Do not directly touch the battery and pierce the battery with a nail or other sharp object.
- Do not transport or store the battery together with metal objects such as needles, hairpins etc.
- Do not transport or store the battery together with flammable or explosive materials.
- Charge the battery every 6 months.
Notes:
- If you may malfunction under electrostatic discharge interference. If the toy does not respond, reset it.
- Use new alkaline batteries in the toy to obtain best performance.
- This toy must only be used with the recommended charger.

FCC Statements
This device complies with part 15 of the FCC rules. Operation is subject to the following two conditions:
1) This device may not cause harmful interference, and
2) This device must accept any interference received, including interference that may cause undesired operation.
NOTE: This equipment has been tested and found to comply with the limits for a Class B digital device, pursuant to Part 15 of the FCC Rules. These limits are designed to provide reasonable protection against harmful interference in a residential installation. This equipment generates, uses and can radiate radio frequency energy and, if not installed and used in accordance with the instructions, may cause harmful interference to radio communications.
However, there is no guarantee that interference will not occur in a particular installation. If the equipment does cause harmful interference to radio or television reception, which can be determined by turning the equipment off and on, the user is encouraged to try to correct the interference by one or more of the following measures:
- Reorient or relocate the receiving antenna.
- Increase the separation between the equipment and receiver.
- Consult the equipment manufacturer for more information.
- Consult the dealer or an experienced radio/TV technician for help.

Waste Electrical and Electronic Equipment (WEEE)
When this appliance is out of use, please remove all batteries and dispose of them separately. Bring electrical appliances to the local collecting points for waste electrical and electronic equipment. Other components can be disposed of in domestic refuse.

Tip! Safety hints
Never operate the product if it has damaged parts.
Do not fly the Aeroplane in the vicinity of water and power lines.
- Stand during operation in order to get out of the way of the Aeroplane quickly if necessary.
- Always switch the Aeroplane and the transmitter off when not operating.
- Keep the instructions for use for later reference!
- Before first use, read the user's information together with your child.
- Operations and safe use must be explained clearly (preferably by graphical illustrations).
- Flying the Aeroplane requires skill and children must be trained under the direct supervision of an adult.
- For toys intended to be assembled by the child. Check if the toy is assembled as instructed. The assembly shall be performed under the supervision of an adult.
- Hands, hair and loose clothes shall be kept away from the propeller (rotor).
- Do not charge or modify anything on the Aeroplane!
- For safe use, the room where the toy is used must sufficiently large. The room must be free from obstacles (such as lamps, loose objects, etc.).
- This toy is intended to be used in domestic area (house and garden) only.
- Caution: The Aeroplane should not be started when persons, animals or any objects are within the flying range of the Aeroplane.
- Do not throw or hold any objects in the rotating rotor.
- Caution: Risk of eye injuries! Do not fly near your face to avoid injuries.

The normal function of the product may be disturbed by Strong Electro Magnetic Interference. If so, simply reset the product to resume normal operation by following the instruction manual. In case the function could not resume, please use the product in other location.

Battery requirement for the Aeroplane:
Power Supply: 3.7V, 9W
Rating: 3.7V LiPo Rechargeable Battery Pack (included)
Capacity: 200mAh

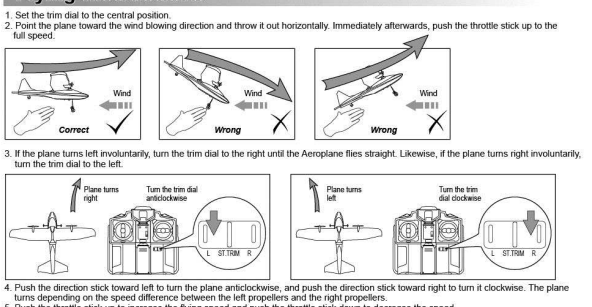
Battery requirement for Transmitter:
Power Supply: DC 9V, 4.5W
Rating: 6 x 1.5V AA/LR6/AM6 (not included)
Batteries: 6 x 1.5V AA/LR6/AM6 (not included)

Silverlit
Silverlit SAS, Espace Green Parc, Route de Villepécq, 91280 Saint Pierre du Peray / France.
©2012 Silverlit. All rights reserved.

Procedure for PAIR / SYNC the Aeroplane and Transmitter

2.4 GHz technology allows for many aeroplanes to fly without signal interference. A connection, or pairing, must be made between the aeroplane and the transmitter to allow for transmission. Sometimes, the pairing will happen automatically. If it does not, or if the connection is lost then follow these steps to sync the Aeroplane and the transmitter.
1. Make sure the throttle stick is at the minimum position.
2. Turn the Power Switch button to "ON" position both on the Aeroplane and Transmitter, Red LED will then flash.
3. The Synchronisation procedure is automatically COMPLETED when you can see the Red LED light up solid (not blinking) on both Aeroplane and Transmitter.

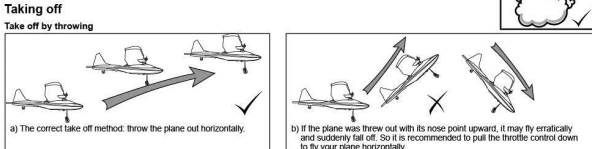
Flying Instructions



Throttle stick	Direction stick	Movement
[Up arrow]	[Up arrow]	Take off or ascending
[Down arrow]	[Down arrow]	Landing or descending
[Left arrow]	[Left arrow]	Turn left
[Right arrow]	[Right arrow]	Turn right

Flying tips

Playing environment and weather:
Outdoors: on a sunny day with calm air or slight breeze. Never fly the plane on a windy day. It is recommended to fly the plane over a soft surface, e.g. grass field. Do not fly the plane when it is raining, snowing or near high power cables.



Tips: Always pointing your plane with the nose facing to the wind.