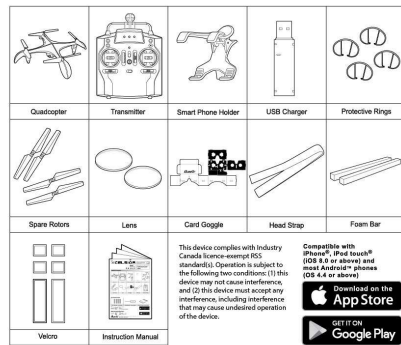


XCELSIOR

For ages 14+
A part of 15 min
Lighting need 15 min
A part of 15 min
OS 1.15 and on

This product is compliant with the essential requirements and other relevant provisions of Directive 1995/53/EC.

Delivery contents



Battery requirements (Transmitter):	Battery requirements (Quadcopter):
Power Supply : 4.2V DC, 5.5W	Power Supply : 3.7V DC, 26W
Rating : 4 x 1.5 V 'AA' (LR6) (not included)	Batteries : 1 x 1.5 V LiPo battery (included)
	Capacity : 850 mAh

Compatibility: This device complies with Industry Canada license-exempt RSS (ICES) Class II or III, and meets or exceeds the following interference requirements. Operation is subject to the following conditions: (1) this device must not cause interference, and (2) this device must accept any interference, including interference that may cause undesired operation of the device.

Warning: When using a commercially available USB AC adapter, make sure it is a 5V DC, 2.1A, 10W or greater. Do not use a power supply that is not 5V DC, 2.1A, 10W or greater. Do not use a power supply that is not 5V DC, 2.1A, 10W or greater. Do not use a power supply that is not 5V DC, 2.1A, 10W or greater. Do not use a power supply that is not 5V DC, 2.1A, 10W or greater.

Precautions, Warning & Statement

The crossed-out double symbol indicates that batteries, rechargeable batteries, built-in battery packs, etc. must be disposed of in an environmentally sound manner. Do not dispose of them separately. Bring electronic appliances to a local collection point for waste electrical and electronic equipment. Other components can be disposed of as domestic refuse.

Special notes:

• Please read the operation instructions carefully prior to the first use.
• This product is intended to be used in domestic areas (house and garden) only. Do not use it in public places or outdoors.
• Do not use it to charge any battery other than that in the quadcopter.
• Do not use it to charge any battery other than that in the quadcopter.

Battery warnings:

• Rechargeable batteries are not to be recharged.
• Rechargeable batteries are to be recharged under adult supervision only.
• Rechargeable batteries are not to be charged under adult supervision only.
• Rechargeable batteries are not to be charged under adult supervision only.
• Rechargeable batteries are not to be charged under adult supervision only.

Warning!

• Do not use the quadcopter in an aircraft or other aircraft. Do not use it in an aircraft or other aircraft. Do not use it in an aircraft or other aircraft. Do not use it in an aircraft or other aircraft. Do not use it in an aircraft or other aircraft.

Warning!

• Do not use the quadcopter in an aircraft or other aircraft. Do not use it in an aircraft or other aircraft. Do not use it in an aircraft or other aircraft. Do not use it in an aircraft or other aircraft.

NEE
When the appliance is out of use, please remove all batteries from the appliance. Do not dispose of them separately. Bring electronic appliances to a local collection point for waste electrical and electronic equipment. Other components can be disposed of as domestic refuse.

CCC Statements

This device complies with part 15 of the FCC rules. Operation is subject to the following two conditions:
(1) This device may not cause harmful interference, and
(2) This device must accept any interference received, including interference that may cause undesired operation.

Care and Maintenance

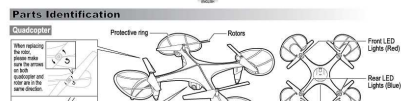
Avoid removal of parts from the product when it is not being used for a long period of time.
Regularly clean the quadcopter with a soft cloth and other parts. Do not use any abrasive material. Do not use any solvent. Do not use any oil. Do not use any grease. Do not use any wax. Do not use any polish. Do not use any furniture polish. Do not use any car wax. Do not use any car polish. Do not use any car wax. Do not use any car polish.

Warning!

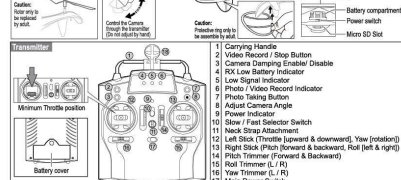
• Do not use the quadcopter in an aircraft or other aircraft. Do not use it in an aircraft or other aircraft. Do not use it in an aircraft or other aircraft. Do not use it in an aircraft or other aircraft.

Warning!

• Do not use the quadcopter in an aircraft or other aircraft. Do not use it in an aircraft or other aircraft. Do not use it in an aircraft or other aircraft. Do not use it in an aircraft or other aircraft.



Parts Identification



Battery Installation & Charging

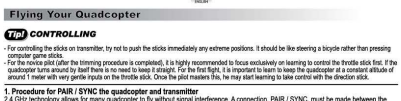
Warning! When using a commercially available USB AC adapter, make sure it is a 5V DC, 2.1A, 10W or greater. Do not use a power supply that is not 5V DC, 2.1A, 10W or greater. Do not use a power supply that is not 5V DC, 2.1A, 10W or greater.

Warning!

• Do not use the quadcopter in an aircraft or other aircraft. Do not use it in an aircraft or other aircraft. Do not use it in an aircraft or other aircraft. Do not use it in an aircraft or other aircraft.

Warning!

• Do not use the quadcopter in an aircraft or other aircraft. Do not use it in an aircraft or other aircraft. Do not use it in an aircraft or other aircraft. Do not use it in an aircraft or other aircraft.



Flying Your Quadcopter

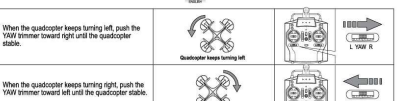
CONTROLLING
• For controlling the quadcopter, it is highly recommended to focus on the transmitter. It should be like steering a bicycle rather than pressing remote control buttons.
• For the first flight, it is highly recommended to fly in a safe area. Do not fly near buildings, power lines, trees, lakes and rivers etc.
• Do not fly near people, animals or property.
• Do not fly near airports or military bases.
• Do not fly near power lines, towers, or other tall structures.
• Do not fly near roads, highways, or other busy areas.
• Do not fly near schools, hospitals, or other sensitive areas.
• Do not fly near prisons, government buildings, or other secure areas.
• Do not fly near airports, airfields, or other aviation facilities.
• Do not fly near military bases, government installations, or other defense facilities.
• Do not fly near nuclear power plants, dams, or other critical infrastructure.

Warning!

• Do not use the quadcopter in an aircraft or other aircraft. Do not use it in an aircraft or other aircraft. Do not use it in an aircraft or other aircraft. Do not use it in an aircraft or other aircraft.

Warning!

• Do not use the quadcopter in an aircraft or other aircraft. Do not use it in an aircraft or other aircraft. Do not use it in an aircraft or other aircraft. Do not use it in an aircraft or other aircraft.



Flying Your Quadcopter

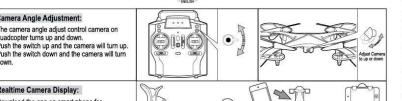
CONTROLLING
• For controlling the quadcopter, it is highly recommended to focus on the transmitter. It should be like steering a bicycle rather than pressing remote control buttons.
• For the first flight, it is highly recommended to fly in a safe area. Do not fly near buildings, power lines, trees, lakes and rivers etc.
• Do not fly near people, animals or property.
• Do not fly near airports or military bases.
• Do not fly near power lines, towers, or other tall structures.
• Do not fly near roads, highways, or other busy areas.
• Do not fly near schools, hospitals, or other sensitive areas.
• Do not fly near prisons, government buildings, or other secure areas.
• Do not fly near airports, airfields, or other aviation facilities.
• Do not fly near military bases, government installations, or other defense facilities.
• Do not fly near nuclear power plants, dams, or other critical infrastructure.

Warning!

• Do not use the quadcopter in an aircraft or other aircraft. Do not use it in an aircraft or other aircraft. Do not use it in an aircraft or other aircraft. Do not use it in an aircraft or other aircraft.

Warning!

• Do not use the quadcopter in an aircraft or other aircraft. Do not use it in an aircraft or other aircraft. Do not use it in an aircraft or other aircraft. Do not use it in an aircraft or other aircraft.



Camera Adjustment

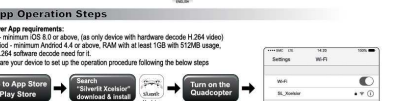
The camera angle adjust control camera on quadcopter turn up and down.
Push the switch up and the camera will turn up.
Push the switch down and the camera will turn down.

Warning!

• Do not use the quadcopter in an aircraft or other aircraft. Do not use it in an aircraft or other aircraft. Do not use it in an aircraft or other aircraft. Do not use it in an aircraft or other aircraft.

Warning!

• Do not use the quadcopter in an aircraft or other aircraft. Do not use it in an aircraft or other aircraft. Do not use it in an aircraft or other aircraft. Do not use it in an aircraft or other aircraft.



App Operation Steps

View App requirements:
iOS: minimum iOS 8.0 or above, (for only device with hardware decode H.264 video)
Android: minimum Android 4.4 or above, RAM with at least 1GB with 512MB usage, and a 2GB software decode need for it.

Warning!

• Do not use the quadcopter in an aircraft or other aircraft. Do not use it in an aircraft or other aircraft. Do not use it in an aircraft or other aircraft. Do not use it in an aircraft or other aircraft.

Warning!

• Do not use the quadcopter in an aircraft or other aircraft. Do not use it in an aircraft or other aircraft. Do not use it in an aircraft or other aircraft. Do not use it in an aircraft or other aircraft.

© 2014 Silverlit. All rights reserved.