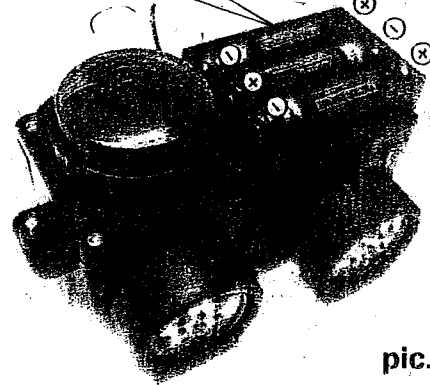
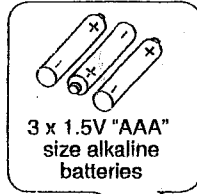
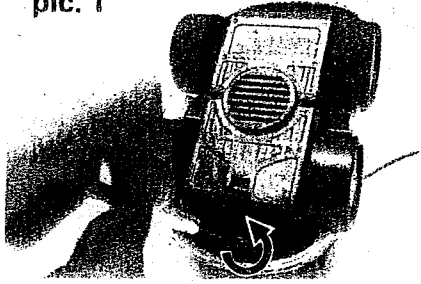


Getting Started

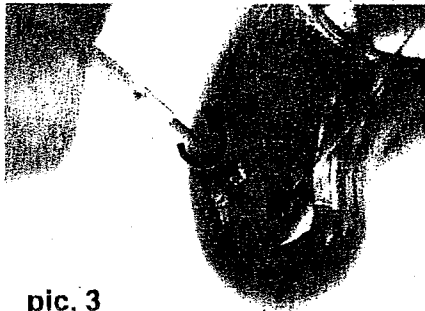
pic. 1



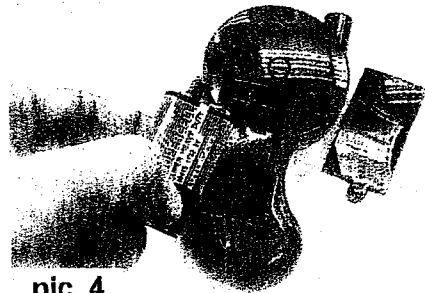
pic. 2

Batteries:

- Your R/C Dancing Auto vehicle is powered by 3 x 1.5V "AAA" size alkaline batteries (pic. 2)
- Your transmitter is powered by 1 x 9V size alkaline battery (pic. 3 & 4)



pic. 3



pic. 4

Battery Installation - Vehicle:

Make sure the power switch is on "OFF" position.

1. The battery compartment is located inside the chassis.
2. Use a phillips screwdriver to loosen screw (turn counter clockwise) and remove the chassis from the case. (pic. 1)
3. Insert new "AAA" size batteries with "+" and "-" signs as shown inside the battery compartment. (pic. 2)
4. Close the chassis use a phillips head screwdriver.

Battery Installation - transmitter:

1. Use a phillips head screwdriver to loosen screw. (turn counter clockwise) (pic. 3)
2. Insert new 1 x "9V" size battery with "+" & "-" signs as shown below. (pic. 4)
3. Close the battery cover use a phillips head screwdriver.

Running Your R/C Dancing Auto vehicle

Start to play :

- Switch on the R/C Dancing Auto vehicle.
- Press the action button to control the R/C Dancing Auto vehicle to go forward or create a spin.
- Press a musical note button to play melody with light.
- After use, switch off the R/C Dancing Auto vehicle.
- If the R/C Dancing Auto vehicle is to be "parked" for a relatively long time, remove all batteries from the vehicle and the transmitter.

Driving Tips:

- Operate only on flat, smooth (but not slippery), dry surfaces and low pile carpet.
- Don't drive your R/C Dancing Auto vehicle in sand or through water or snow. If your vehicle gets wet, wipe with a towel and allow to dry completely.
- When your R/C Dancing Auto vehicle runs erratically, the problem is usually the result of interference caused by high tension wires, radios, or other R/C cars running close by on the same frequency as yours. You may have to choose on alternate place to race.
- Do not operate near concrete walls which may disturb transmission.

Trouble Shooting:

Symptom	Cause	Correction
Vehicle does not react, or react poorly to operation by transmitter.	• High-frequency interference occurred near to high-voltage lines, transformers and some types of building.	• Avoid these if possible, or choose another place to operate the vehicle.
Loss of control	• Another radio control vehicle using the same frequency is operated near your vehicle. • Out of the control range of distance.	• Race against other vehicles using different frequencies. • Move to another place where without radio frequency interference from another device.
Vehicle runs slowly or does not run.	• Loose battery connection • Main power switch is not in "ON" position. • Batteries are not placed in compartment correctly. • Batteries are exhausted.	• Check battery connection. • Switch on the power. • Check the battery polarity. • Replace all old batteries with new ones.



R/C Dancing Auto™

EI-266 Instruction Manual

Contents:

- R/C Dancing Auto vehicle
- Transmitter
- Instruction manual

Key Features:

- Radio control R/C Dancing Auto vehicle moves forward and spins
- Playing 16 melodies with light.

Safety Precautions:

- Parents, this toy is recommended for children 3 years and older. To ensure that your child's play is both safe and fun, please review the operating instructions with your children. If toy in the presence of children under 3 years of age, adult supervision is recommended.
 - DO NOT pick up moving vehicle
 - Keep hands, hair and loose clothing away from the tires and the wheel hubs when power switch is turned ON.
 - DO NOT operate your vehicle on street. Avoid hitting people, pets or home furnishings.
- Warning: Changes or modifications to this unit not expressly approved by the party responsible for compliance could void the user's authority to operate the equipment.

Cautions:

- Non-rechargeable batteries are not to be recharged.
- Do not use rechargeable batteries.
- Different types of batteries or new and used batteries are not to be mixed.
- Only batteries of the same or equivalent type as recommended are to be used.
- Batteries are to be inserted with correct polarity.
- Exhausted batteries are to be removed from the toy.
- The supply terminals are not to be short-circuited.

Care and Maintenance:

- Always remove batteries from the toy when it is not being used for a long period of time.
- Wipe the toy gently with a clean damp cloth.
- Keep the toy away from direct sunlight and/or direct heat.
- Do not submerge the toy into water that can damage the electronic assemblies.

Note:

- Parental guidance is recommended when installing or replacing batteries.
- New and alkaline batteries are recommended to use in this toy to obtain best and maximum performance.
- You are advised to replace with new batteries as soon as the function becomes impaired.
- Interference will cause loss of control or uncontrolled running of vehicle if used in vicinity of cordless telephones, baby monitors, electronic devices or other radio controlled devices.
- To race 2 vehicles at the same time, each must have a separate frequency. One with 27MHz, and the other with 49MHz, if both have the same frequency, their signals will interfere with each other.
- Users should keep and retain this information for future reference.
- Users should keep strict accordance with the manufacturer's instructions while operating the product.

Battery requirement for Transmitter:

Power Supply :
 Rating : DC 9V 0.5W
 Battery : 1 x 9V / 6LF22 / 6AM6
 Requires 1 x "9V" alkaline battery (not included)

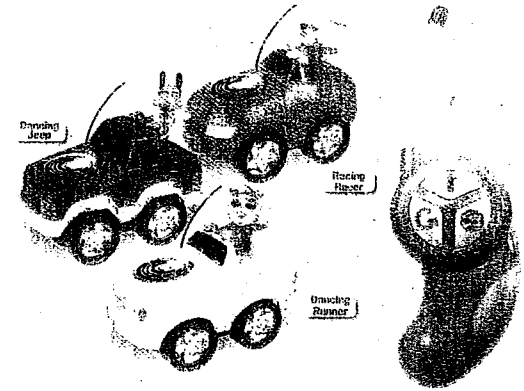
Battery requirement for Vehicle:

Power Supply :
 Rating : DC 4.5V 3W
 Batteries : 3 x 1.5V "AAA" LR03 / AM4
 Requires 3 x 1.5V "AAA" size alkaline batteries (not included)

This product is in compliance with the essential requirements and other relevant provisions of Directive 1995/5/EC.



WARNING:
 CHOKING HAZARD – Small parts.
 Not for Children under 3 years.

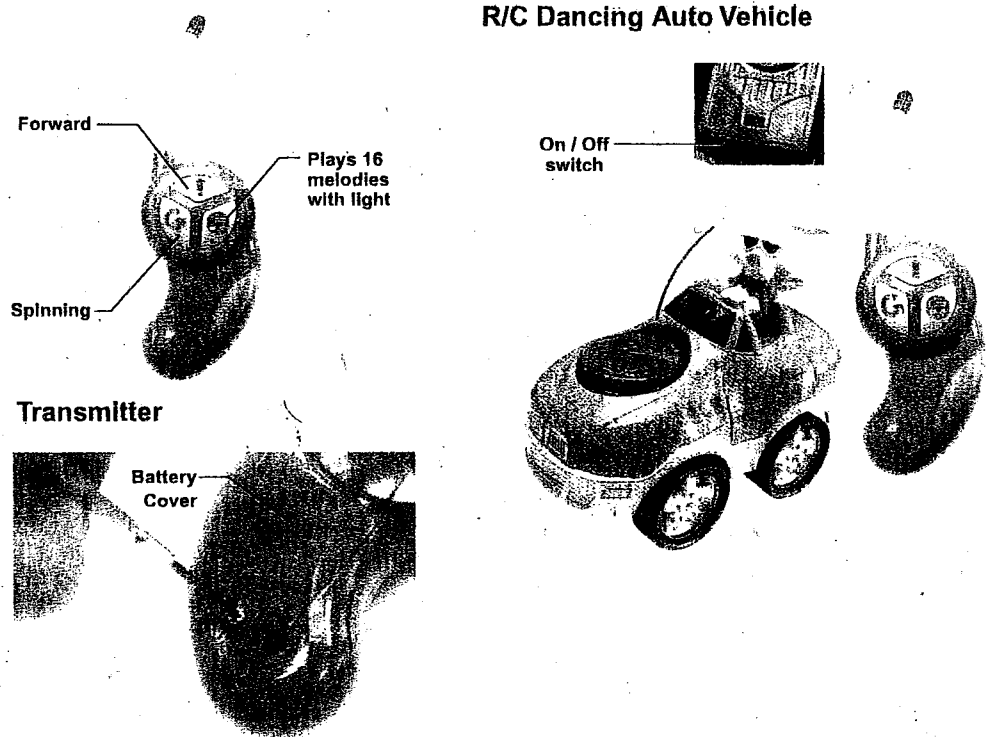


FCC Statements

This device complies with part 15 of the FCC rules. Operation is subject to the following two conditions:

- 1) This device may not cause harmful interference, and
 - 2) This device must accept any interference received, including interference that may cause undesired operation.
- NOTE: This equipment has been tested and found to comply with the limits for a Class B digital device, pursuant to Part 15 of the FCC Rules. These limits are designed to provide reasonable protection against harmful interference in a residential installation. This equipment generates, uses and can radiate radio frequency energy and, if not installed and used in accordance with the instructions, may cause harmful interference to radio communications. However, there is no guarantee that interference will not occur in a particular installation. If this equipment does cause harmful interference to radio or television reception, which can be determined by turning the equipment off and on, the user is encouraged to try to correct the interference by one or more of the following measures:
- Reorient or relocate the receiving antenna.
 - Increase the separation between the equipment and receiver.
 - Connect the equipment into an outlet on a circuit different from that to which the receiver is needed.
 - Consult the dealer or an experienced radio/TV technician for help.

Index to Parts



Silverlit Toys (U.S.A.) Inc. 17800 Castleton Street, Suite 463, City of Industry, CA 91748, U.S.A.
 ©2003 Silverlit Toys Manufactory Limited. All rights reserved. Tel: 1-800-707-1159