

4 ENGLISH Flying tips

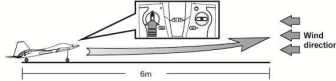
Flying environment and weather condition:

- a) Outdoors on a sunny day with calm air or slight breeze. Never fly the plane on a windy day.
b) It is recommended to fly the plane over a soft surface, e.g. grass field.
c) Do not fly the plane when it is raining, snowing or near high power cables.



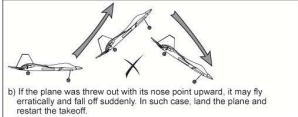
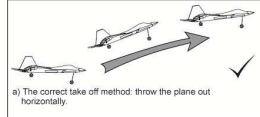
Take off from ground

- To take off on ground, set the plane on a smooth surface (minimum 6m in length). Direct the plane to the wind direction and push the throttle stick to full speed. The plane will take off after 3-5m running on the ground. Once it reaches the desired altitude, pull the throttle to middle position and control the direction (left or right) through the direction stick.



Taking off

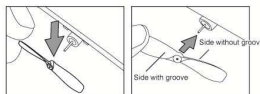
Take off by throwing



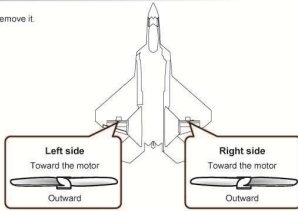
Tips: Always pointing your plane with the nose facing to the wind.

Replacement of propeller

- 1. Cut the damaged propeller at the centre (propeller hub) and then remove it.
2. Identify the correct propeller and insert it into the motor shaft.



Caution: Propeller should be replaced by adult. Motor shafts may contain sharp points!

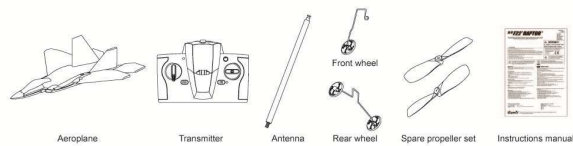


Troubleshooting

Table with 3 columns: Symptom, Diagnosis, and Solution. It lists various issues like 'Propeller does not move', 'Power indicator on transmitter is blinking', and 'The plane is out of control' with their respective causes and fixes.

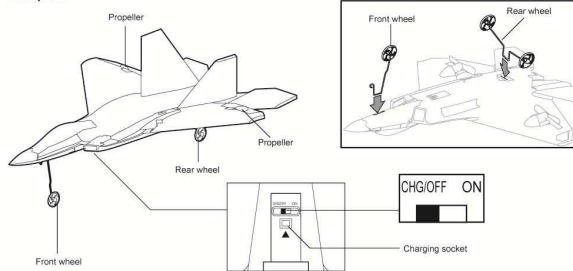
2 ENGLISH Delivery contents

Delivery contents

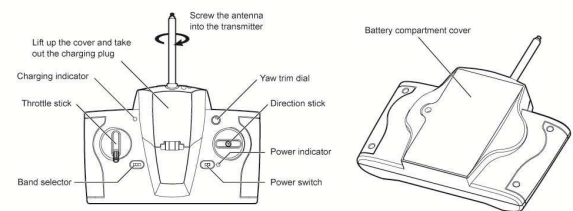


Part Identification

Aeroplane



Transmitter



R/C F22 RAPTOR

LOCKHEED MARTIN F-22 RAPTOR, associated emblems and logos, and body designs of vehicles are either registered trademarks or trademarks of Lockheed Martin Corporation in the USA and/or jurisdictions, used under license by Silverlit Toys Manufacturing Ltd.

ENGLISH 1

For Ages 8+
Ab 8 Jahre
Pour 8 ans et plus
Voor leeftijd 8+
Para 8+ años
Dai 8 anni su in

WARNING! CHOKING HAZARD: Small Parts. Not for children under 3 years.

This product is in compliance with the essential requirements and other relevant provisions of Directive 1999/5/EC.

Do not touch the running propeller! Do not play above someone's head! Adult supervision is required!

FCC Statements

The device complies with part 15 of the FCC rules. Operator is subject to the following two conditions:
1) This device may not cause harmful interference, and
2) This device must accept any interference received, including interference that may cause undesired operation.
NOTE: This equipment has been tested and found to comply with the limits for a Class B digital device, pursuant to Part 15 of the FCC Rules. These limits are designed to provide reasonable protection against harmful interference in a residential installation. This equipment generates, uses and can radiate radio frequency energy and, if not installed and used in accordance with the instructions, may cause harmful interference to radio communications. However, there is no guarantee that interference will not occur in a particular installation. This equipment does cause harmful interference to radio or television reception, which can be determined by turning the equipment off and on; the user is encouraged to try to correct the interference by one or more of the following measures:
- Reorient or relocate the receiving antenna.
- Increase the separation between the equipment and receiver.
- Connect the equipment into an outlet on a circuit different from that to which the receiver is connected.
- Consult the dealer or an experienced radio/TV technician for help.

The crossed-out wheeled symbol indicates that batteries, rechargeable batteries, button cells, battery packs, etc. must not be put in the household waste. Batteries are harmful to health and the environment. Please help to protect the environment from health risks: full your children to dispose of batteries properly by taking them to the local collecting points. This way batteries are recycled safely.

Waste Electrical and Electronic Equipment (WEEE)
When this appliance is out of use, please remove all batteries and dispose of them separately. Bring electrical appliances to the local collecting points for waste electrical and electronic equipment. Other components can be disposed of in general refuse.

Safety precautions:

Warning: Conversion or modifications to this product not expressly approved by the party responsible for compliance could void the user's authority to operate the product.
- The transmitter charger is safe-made for charging the LiPo battery in the airplane. Do not use it to charge any other batteries.

Care and Maintenance:
- Always remove batteries from the toy when it is not being used for a long period of time.
- Regularly examine for damage to the plug, enclosure and other parts. In the event of any damage, the toy must not be used with the transmitter charger until the damage has been repaired.
- Use the toy gently with an open mind.
- Keep the toy away from direct heat.
- Do not submerge the toy into water that can damage the electronic assemblies.

Special notes to adults:
- Parents: Please read the operating instructions carefully with your children prior to the first use.
- Only operate the robot under adult supervision.
- Assembly should be performed under adult supervision (charging batteries/spare parts, trimming etc.).
- Parental guidance is recommended when installing or replacing batteries.

Notes:
1. The toy may malfunction under electrostatic discharge interference. If the toy does not respond, reset it.
2. This toy must only be used with the recommended charger.
3. This toy must only be used with the recommended battery.

Battery warnings:
- Non-rechargeable batteries are not to be recharged.
- Rechargeable batteries are to be recharged before being charged. (Transmitter only)
- Rechargeable batteries are only to be charged under adult supervision.
- Different types of alkaline or used and used batteries are not to be mixed. (Transmitter only)
- Only batteries of the same or equivalent type are recommended to be used.
- Batteries are to be inserted with correct polarity.
- Damaged batteries are to be removed from the toy. (Transmitter only)
- The spare terminals are not to be short-circuited.
- Do not mix old and new batteries. (Transmitter only)
- Do not mix alkaline, standard (zinc-carbon) or rechargeable (nickel-cadmium) batteries. (Transmitter only)

TIP! Safety hints

- Handle the controller and airplane gliding requires specific skills and should be learned under direct supervision of an experienced adult.
- Never operate this product if it has damaged parts.
- This product is designed for indoor use only. Wind and short transmission range can lead to loss of control.
- Attention! Do not fly the airplane near persons and animals.
- Do not fly the airplane in the vicinity of water and power lines.
- For better flight results, make sure you choose a sufficiently large room, free of obstacles such as lamps, loose objects, etc.
- Always keep your eyes on the airplane and prevent it from landing or crashing near your head, your body or on other people.
- Stand during operation in order to get out of the way of the airplane quickly if necessary.
- Always switch the helicopter and the transmitter off when not operating.
- Warning! Do not touch the running propeller. Keep hands, hair and loose clothes away from moving parts to avoid injury.
- Never hold or throw any objects into the running propeller.
- Attention! Risk of eye injury! Keep a safety distance of at least 1 metre.
- Keep this instruction manual for future reference.

This toy is equipped with a LiPo rechargeable battery, please pay attention to the following cautions for safety use:
- Do not expose the battery in fire or heat.
- Do not use or reuse the battery near or heat sources such as fire or heater.
- Always switch the battery near or heat sources against hot surface.
- Do not immerse the battery in water, and keep the battery in a cool dry environment.
- Always use only the battery charger specifically for that purpose.
- Do not over discharge the battery.
- Do not connect the battery to an electrical outlet.
- Do not directly solder the battery and connect the battery with a nail or other sharp object.
- Do not attempt to short the battery together with metal objects such as needles, pins, etc.
- Do not disassemble or alter the battery.
- Charge the battery every 30 minutes.

Battery requirement for Aeroplane:
Power Supply: DC 3.7 V, 3.0 W
Rating: 1.3, 3.7 V LiPo Rechargeable Battery Pack (included)
Capacity: 130 mAh

Battery requirement for Transmitter:
Power Supply: DC 3.0 V, 3.0 W
Rating: 3.0 V, 3.0 W NiMH Rechargeable Batteries (not included)

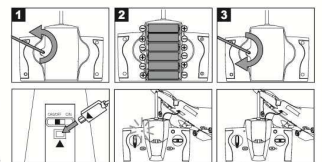
Silverlit® Silverlit SAS, Espace Green Parc, Route de Villepede, 91280 Saint Pierre du Perray J France. ©2010 Silverlit All rights reserved.

ENGLISH 3

Flying Preparation:

Transmitter batteries installation:

- 1. Loosen the screw on the battery compartment by turning a screw driver anticlockwise.
2. Insert 6 AA batteries with correct polarity, as shown inside battery compartment.
3. Tighten the screw to close the battery compartment.

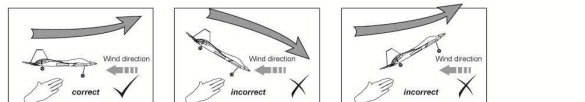


Plane battery charging:

- 1. Switch off the plane and the transmitter. Draw out the charging plug from the transmitter and connect it to the charging socket on the plane.
2. Switch on the transmitter. The charging process will begin automatically and the green charging indicator will light up.
3. Unplug the charging plug after the charging indicator turns off; charging is completed. It takes about 30 minutes of charging time for every 3 minutes flight. Charging time depends on the battery status.

Flying Instructions

- 1. Screw the antenna onto the transmitter.
2. Set the band on the transmitter the same as the plane's through the band selector.
3. Switch the plane on. Make sure the transmitter is off.
4. Switch on the transmitter; make sure the throttle stick is at the minimum position.
5. Set the trim dial to the central position.
6. Point the plane toward the wind blowing direction and throw it out horizontally. Immediately afterwards, push the throttle stick up to the full speed.



- 7. If the plane turns left involuntarily, turn the trim dial to the right until the helicopter flies straight. Likewise, if the plane turns right involuntarily, turn the trim dial to the left.



- 8. Push the direction stick toward left to turn the plane anticlockwise, and push the direction stick toward right to turn it clockwise.
9. Push the throttle stick up to increase the flying speed and push the throttle stick down to decrease the speed.

Table with 3 columns: Throttle control, Direction control, and Movement. It maps stick positions to actions like 'Take off or ascending', 'Landing or descending', 'Turn left', and 'Turn right'.

- 10. Direct the plane to face the wind direction.
11. If the plane has been spoiled a little, you can fix it with adhesive tape.