

TANGO

TABLET AND KEYBOARD COMBO



Tango Tablet

Quick Start Guide

This is a quick start guide only

For full user manual, please visit

www.simbans.com/manuals

Read me first

Please read this manual before operating your tablet, and keep it for future reference.


The descriptions in this manual are based on the default settings.

Images and screenshots used in this manual may differ from the actual product.

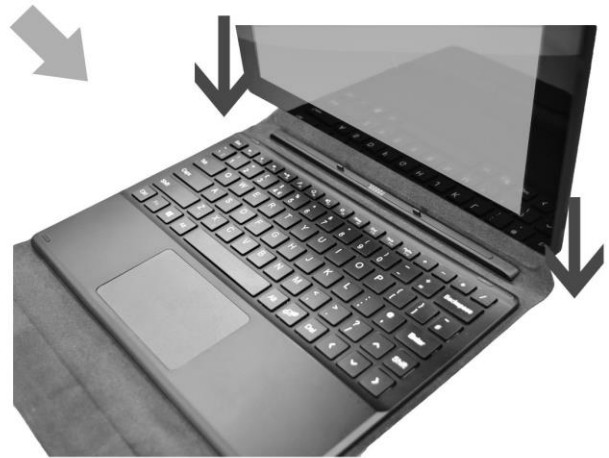
Available features and additional services may vary by device, software or service provider.

Our company is not liable for performance issues caused by third-party applications.



Button	Description
1. Back Camera	5 Megapixel camera to take photos
2. Volume Key	Press to increase or decrease the volume
3. Power key 	Press and hold the power button for a few seconds to turn on the tablet. To turn off the tablet, press and hold the power button for a few seconds, and then select Power Off. When the tablet is on, press the power button once to lock/ unlock the screen.
4. Mic	Built-in microphone captures sound and voice when it is used with an application capable of handling audio.
5. Headphone	Slot for earphones plug-in
6. MicroUSB	Connect your tablet to computer for file/ songs transfer
7. HDMI	Connect your tablet to laptop or TV with HDMI cable
8. USB	Connect your tablet to computer for file/ songs transfer
9. Reset	A very tiny hole. If your tablet freezes, please use a paperclip to gently press inside this hole to reset.
10. TF Card	Slot for MicroSD card expansion (supports up to 32 GB)

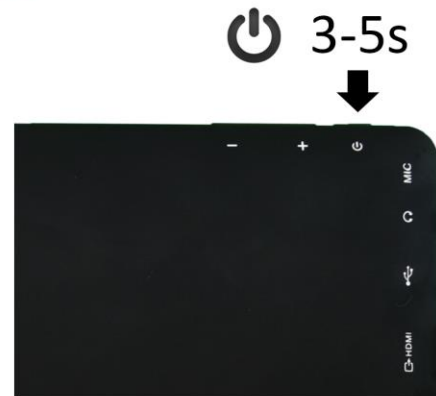
Connecting Tablet and Keyboard



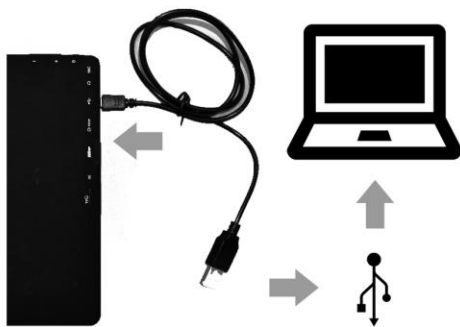
1 Charging



2 Power On



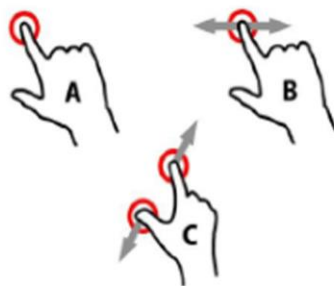
3 File Transfer



4 Insert MicroSD card
(not included)



Select Drag & Move



Zoom

? www.simbans.com/manuals

Charge the Tablet

The Tablet comes with a built-in rechargeable lithium-polymer battery. It is recommended to fully charge the battery before first use.

- To charge the Tablet, plug the charger to an electrical socket with the other end of the adapter inserted to the microUSB input slot on the Tablet (Refer to Step 1 on the previous page).
- You may continue to use the Tablet while it is charging. You may stop charging any time even when it is not 100% charged.
- If the Tablet is powered on, the battery charge status will be indicated at the top right corner of the screen by the battery meter. If the Tablet is powered off, it will charge until the battery is full.
- When the battery life runs out, the battery meter turns red and the device needs to be charged soon. It will continue to operate as usual until it drops to 0%.



Displays your current battery charge level is very low (Charge: ~15% - 5%).



Shows your current battery only has up to 4% power remaining and will soon shutdown. (Charge: ~4% - 1%).

- Disconnect the power adapter when the Tablet is fully charged.

Note: When the Tablet is connected to a computer via the USB cable, the battery will charge via the USB socket, but at a much slower rate than the power adapter supplied.

- ⚠ Do not use any other power adapters than the one supplied. Using an incompatible power adapter could damage the tablet and poses the potential risk of fire.

Turn on the Tablet

- Press the power key circled in red for 5 seconds.
- Wait for about 30 seconds for Android to load and start.
- The Tablet will guide you through the basic setup.




Home screen

When you first turn on and unlock your tablet, you will get to the home screen. Each icon represents an application (app). Whenever you want to return to the home screen, you can press the Home button on the left side on the device or tap on the home button located at the bottom of the screen (white circle icon).




Changing the language

The default language of the Tablet is English. To change the language:

- Go to Settings by pressing icon on Home screen 
- Scroll to Personal section => Select Language & Input => Tap on Language
- Select desired language

Connect to Wi-Fi

- Go to Settings by pressing icon on Home screen 
- Under Wireless & network section => Select Wi-Fi

- Turn on wi-fi by pressing the circled icon



- A list of available wireless network names (SSID) will appear
- Select your wireless network, enter the password and press connect
- Wait while the Tablet connect to the network

An icon will be displayed in the status bar to show the wireless connection status



Once you are connected to a wireless network, you can select it on the list, to view the connection details (e.g. signal strength, link speed and IP address). You can use the Forget option to disconnect from the network and remove the stored password.

Sign in to Google account



- Go to Settings by pressing icon on Home screen
- Scroll to Personal section => Select Accounts => Add account => Google
- If you have an existing Google account
 - ⇒ Enter your Google email and press Next
 - ⇒ Enter your Google account password and press Next
 - ⇒ Accept the Terms of Service and Privacy Policy
 - ⇒ Select backup options, payment info accordingly
- If you do not have a Google account yet,
 - ⇒ Select “Or create a new account”
 - ⇒ Enter you first name and last name and press Next
 - ⇒ Enter your desired username and press Next
 - ⇒ Create your password with at least 8 characters and press Next
 - ⇒ You will be prompted to add your phone number. You may insert your phone number or skip this step.
 - ⇒ Agree to the Privacy Policy and Terms of Service by pressing “I agree”
 - ⇒ Sign in to your Google account by pressing Next

The Tablet is now ready for use.

For warranty registration, visit at
Simbans.com

For any concern, email us at
support@simbans.com



Federal Communications Commission (FCC) Statement

This device complies with part 15 of the FCC Rules. Operation is subject to the following two conditions: (1) This device may not cause harmful interference, and (2) this device must accept any interference received, including interference that may cause undesired operation.

Note: This equipment has been tested and found to comply with the limits for a Class B digital device, pursuant to part 15 of the FCC Rules. These limits are designed to provide reasonable protection against harmful interference in a residential installation. This equipment generates, uses and can radiate radio frequency energy and, if not installed and used in accordance with the instructions, may cause harmful interference to radio communications. However, there is no guarantee that interference will not occur in a particular installation. If this equipment does cause harmful interference to radio or television reception, which can be determined by turning the equipment off and on, the user is encouraged to try to correct the interference by one or more of the following measures:

- Reorient or relocate the receiving antenna.
- Increase the separation between the equipment and receiver.
- Connect the equipment into an outlet on a circuit different from that to which the receiver is connected.
- Consult the dealer or an experienced radio/TV technician for help.

Warning: Changes or modifications made to this device not expressly approved by Simbans Limited may void the FCC authorization to operate this device.

Note: The manufacturer is not responsible for any radio or TV interference caused by unauthorized modifications to this equipment. Such modifications could void the user's authority to operate the equipment.