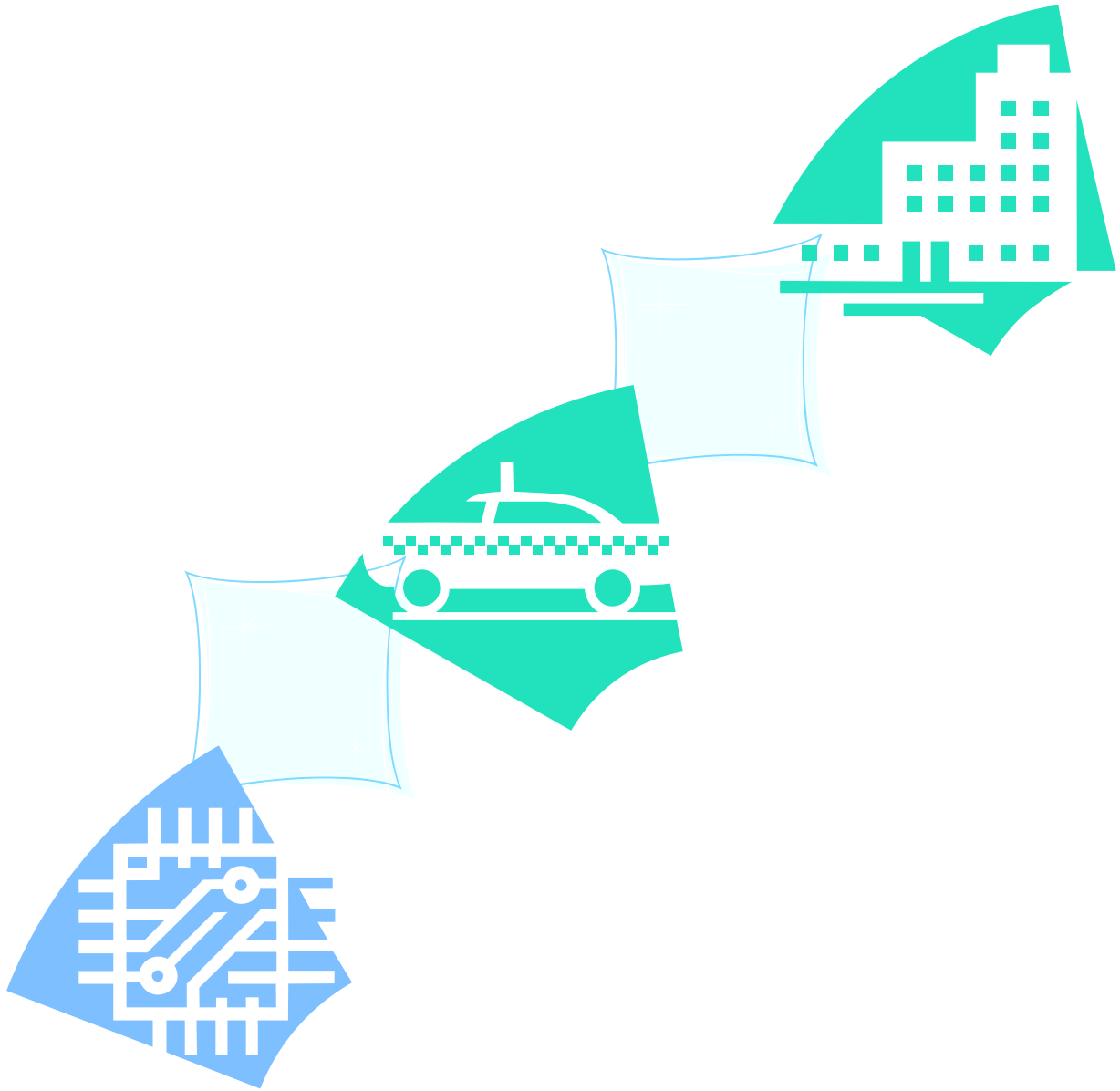


SIM340 User Manual



Document Name:	SIM340 User Guide
Version:	1.00
Date:	2006-6-18
DocId:	SIM340 User Guide_V1.00
Status:	Release

General Notes

Simcom offers this information as a service to its customers, to support application and engineering efforts that use Simcom products. The information provided is based upon requirements specifically provided to Simcom by the customers. Simcom has not undertaken any independent search for additional relevant information, including any information that may be in the customer's possession. Furthermore, system validation of this Simcom product within a larger electronic system remains the responsibility of the customer or the customer's system integrator. All specifications supplied herein are subject to change.

Copyright

This document contains proprietary technical information which is the property of SIMCOM Limited., copying of this document and giving it to others and the using or communication of the contents thereof, are forbidden without express authority. Offenders are liable to the payment of damages. All rights reserved in the event of grant of a patent or the registration of a utility model or design. All specification supplied herein are subject to change without notice at any time.

Copyright © SIMCOM Limited. 2006

Contents

1 SIM340 EVB and accessories	4
1.1 SIM340 EVB.....	4
1.2 accessories.....	5
2 EVB and accessory equipment.....	5
3 Operation.....	6
3.1 Tune up procedure.....	6
3.2 Setup the phone call	6
3.3 GPRS start-up	12
4 AT command	12
5 FCC Requirements.....	12
6 FCC RF exposure requirements	13

1 SIM340 EVB and accessories

1.1 SIM340 EVB

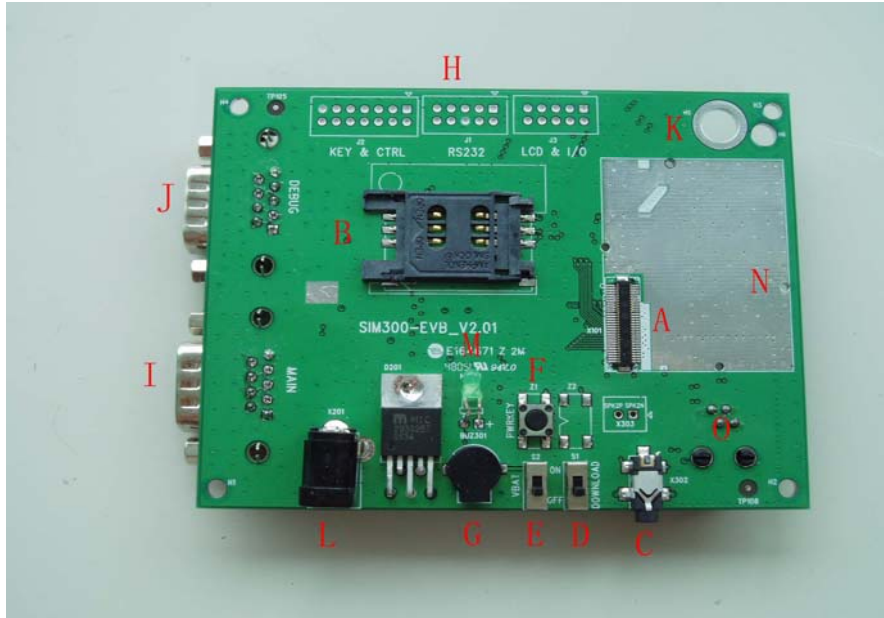


Figure 1: EVB TOP view

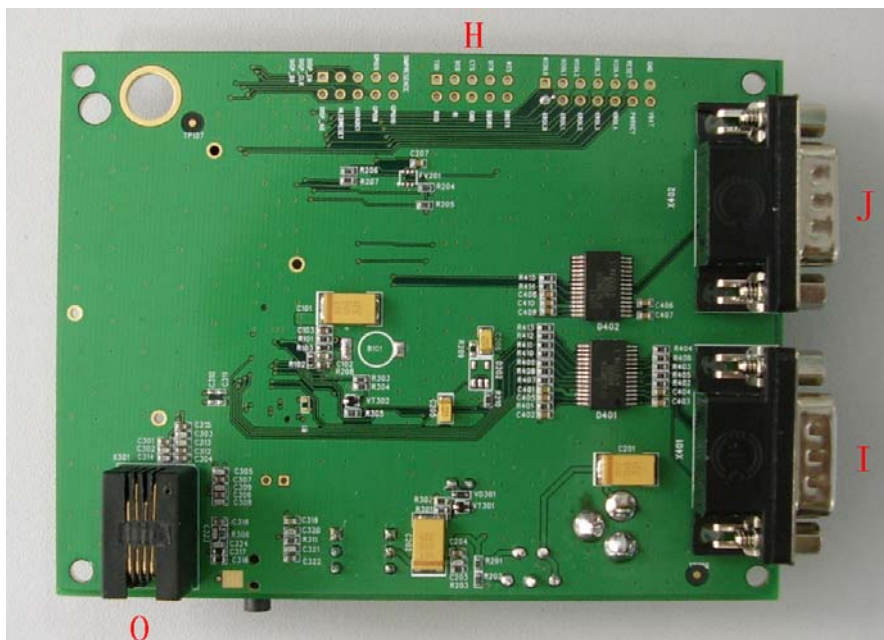
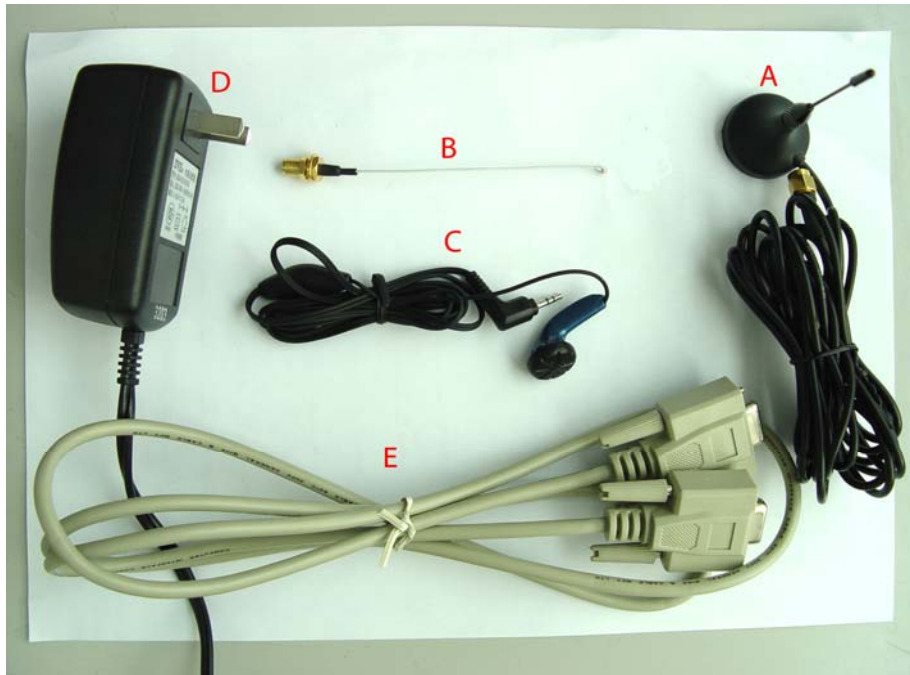


Figure 2: EVB BOTTOM view

- A: SIM340 module interface
- B: SIM card interface
- C: headset interface

- D: Download switch, turn on or off download function
- E: VBAT switch, switch the voltage source from the adaptor or external battery
- F: PWRKEY key, turn on or turn off SIM340
- G: buzzer
- H: expand port, such as keypad port, main and debug serial port, display port
- I: MAIN serial port for downloading, AT command transmitting, data exchanging
- J: DEBUG serial port
- K: hole for fixing the antenna
- L: source adapter interface
- M: light
- N: hole for fixing the SIM340
- O: headphones interface

1.2 accessories



- A: antenna
- B: antenna transmit line
- C: headset
- D: 5V DC source adapter
- E: serial port line

2 EVB and accessory equipment

At normal circumstance, the EVB and its accessory are equipped as the nether figure:



Figure 3: EVB and accessory equipment

3 Operation

Firstly, please equip the module and accessories as the figure 3:

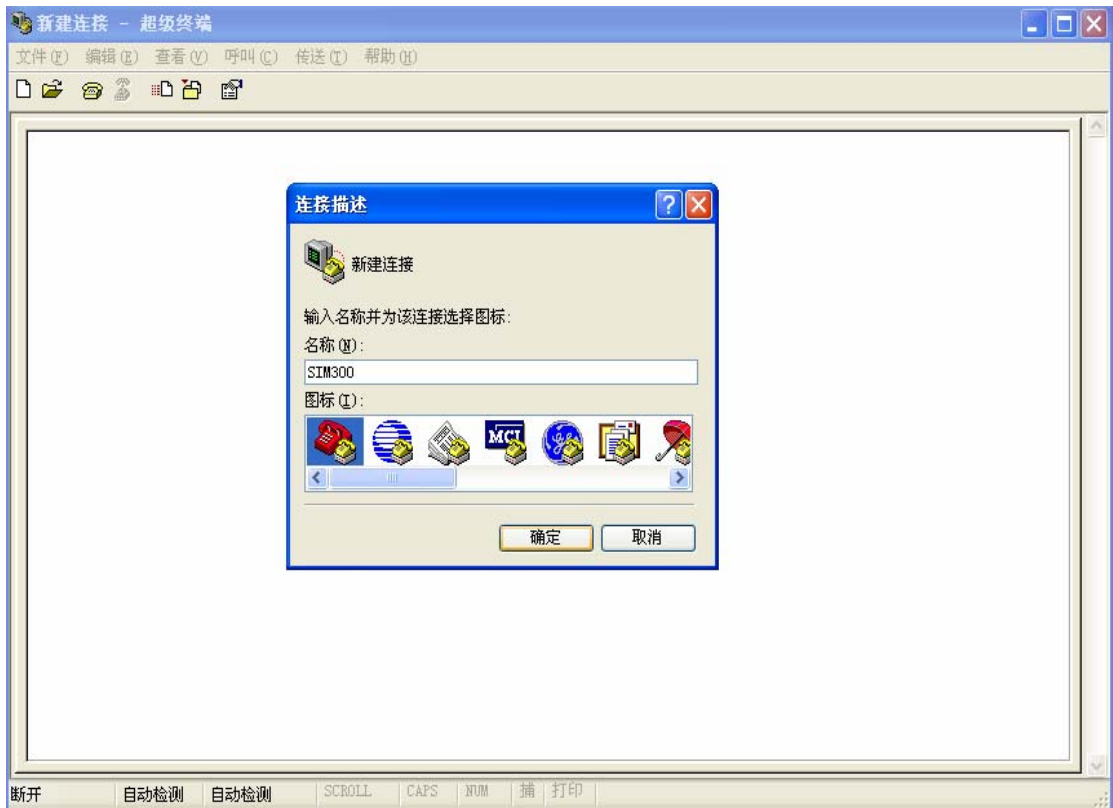
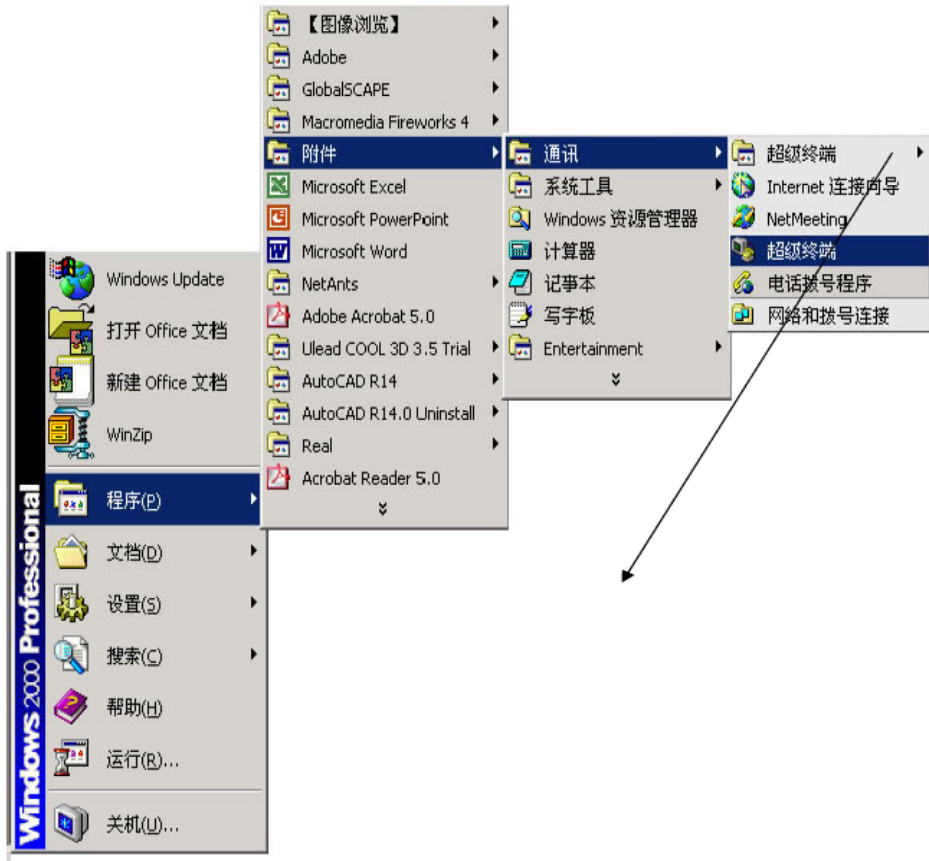
3.1 Tune up procedure

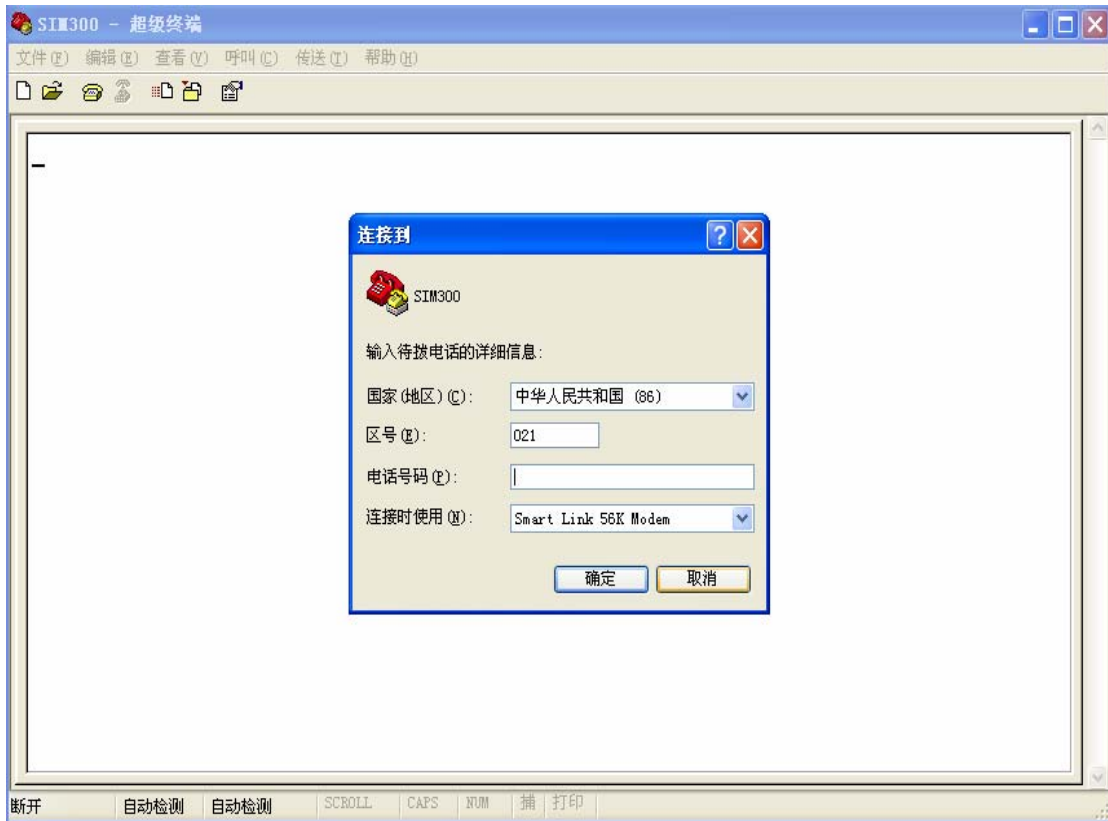
- 1) switching the S1 switch to **off** state, S2 switch to **ON** state;
- 2) Press the **PWRKEY** button for about 1 second, then the LED glint, and the module is tuning up successfully;

3.2 Setup the phone call

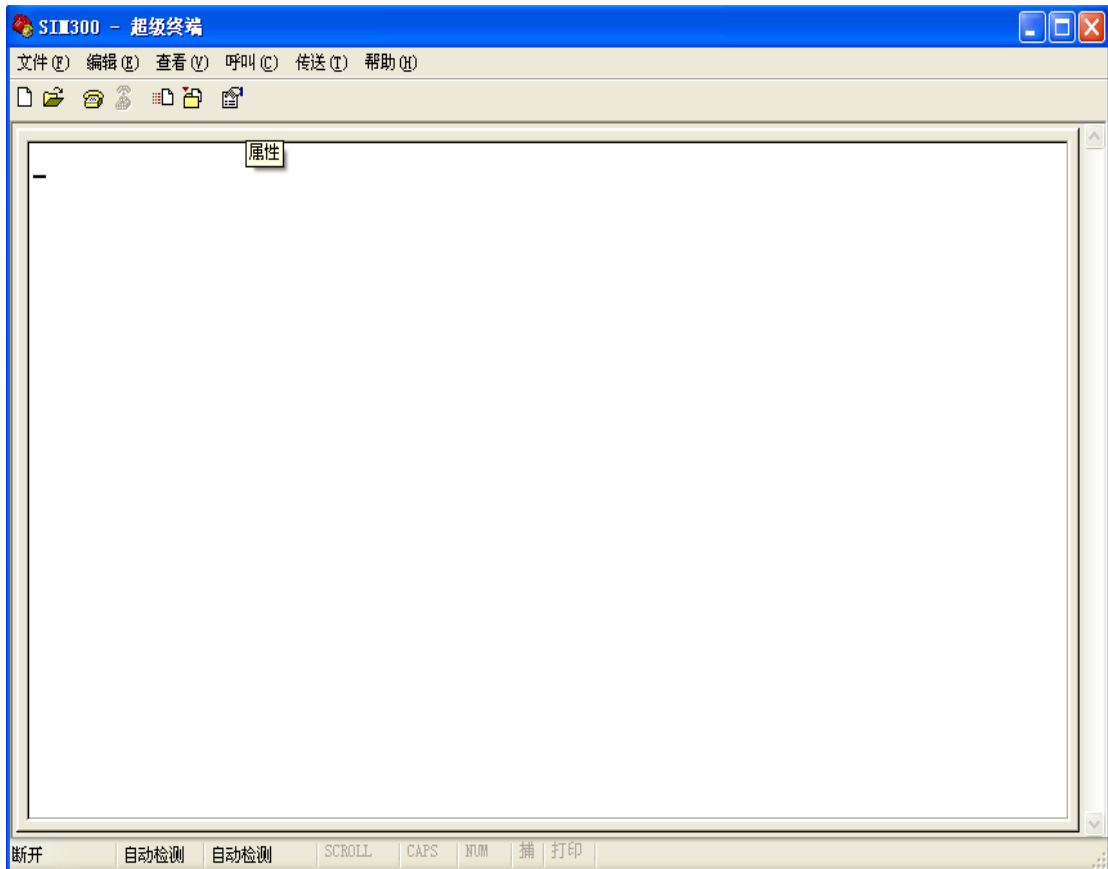
Please setup a HyperTerminal(AT command windows) step by step:

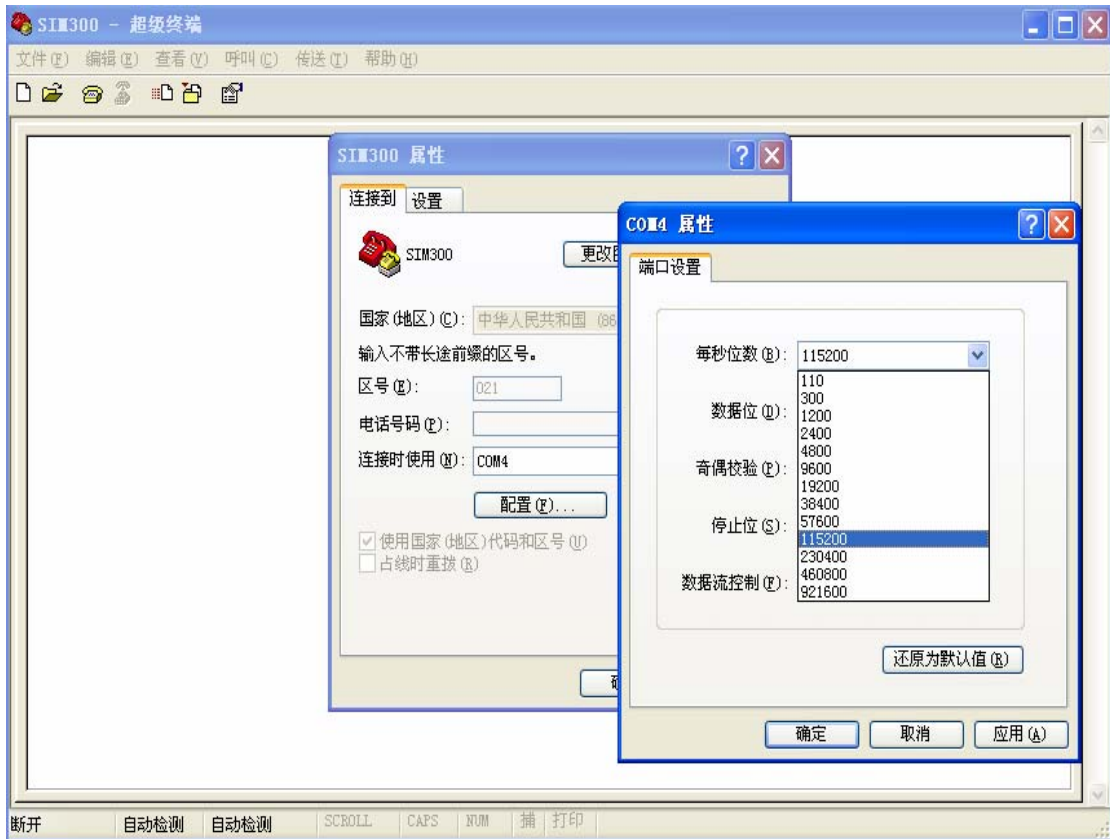
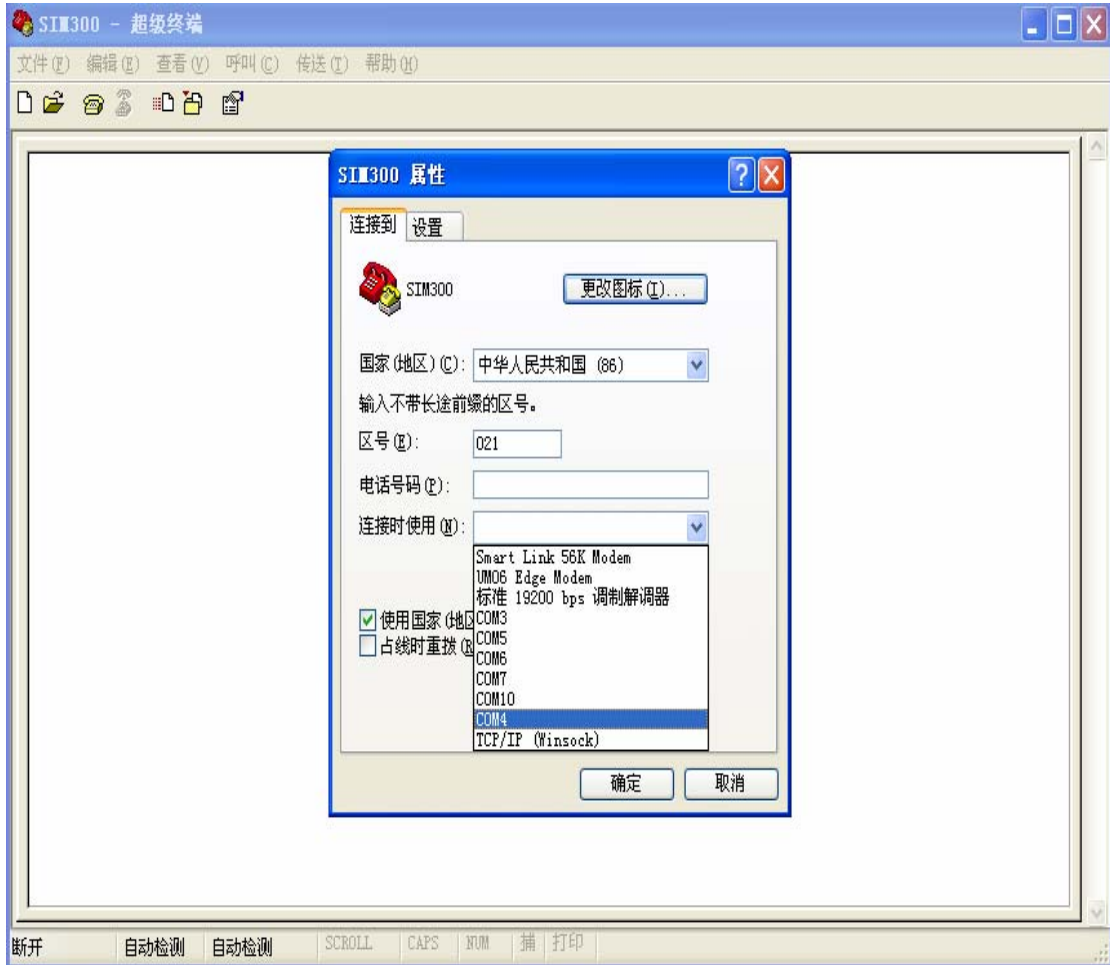
Step1, setup the HyperTerminal connect:

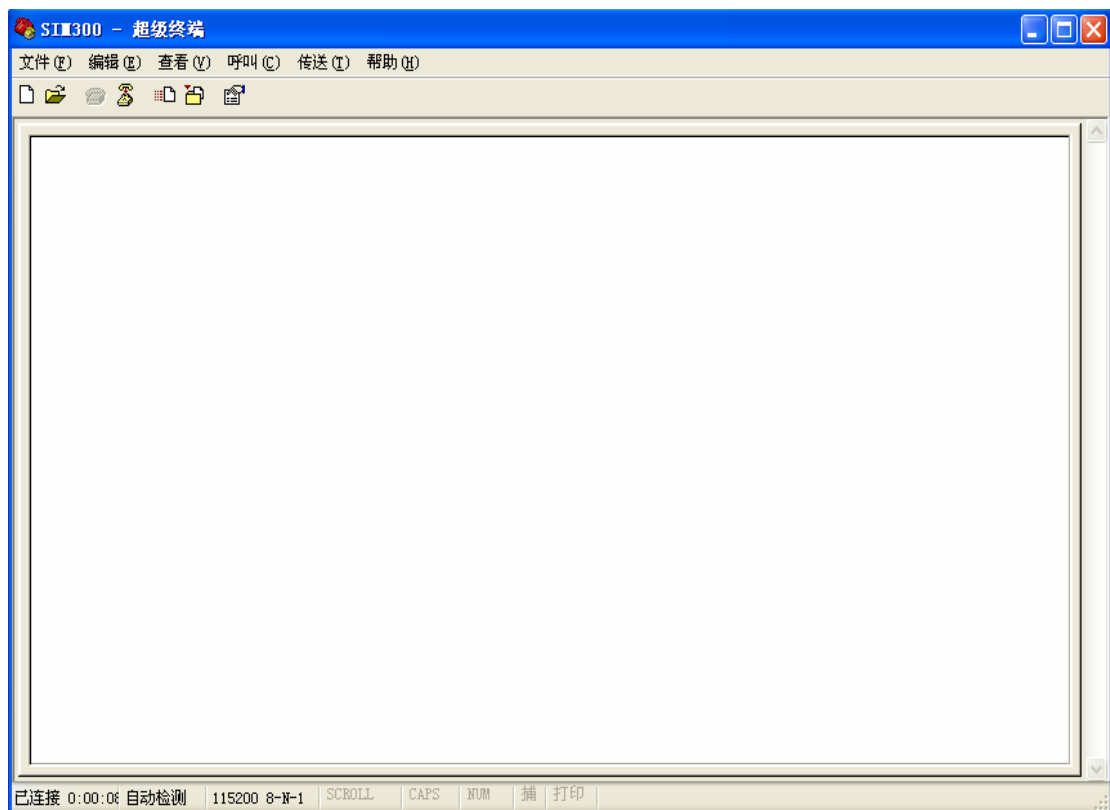
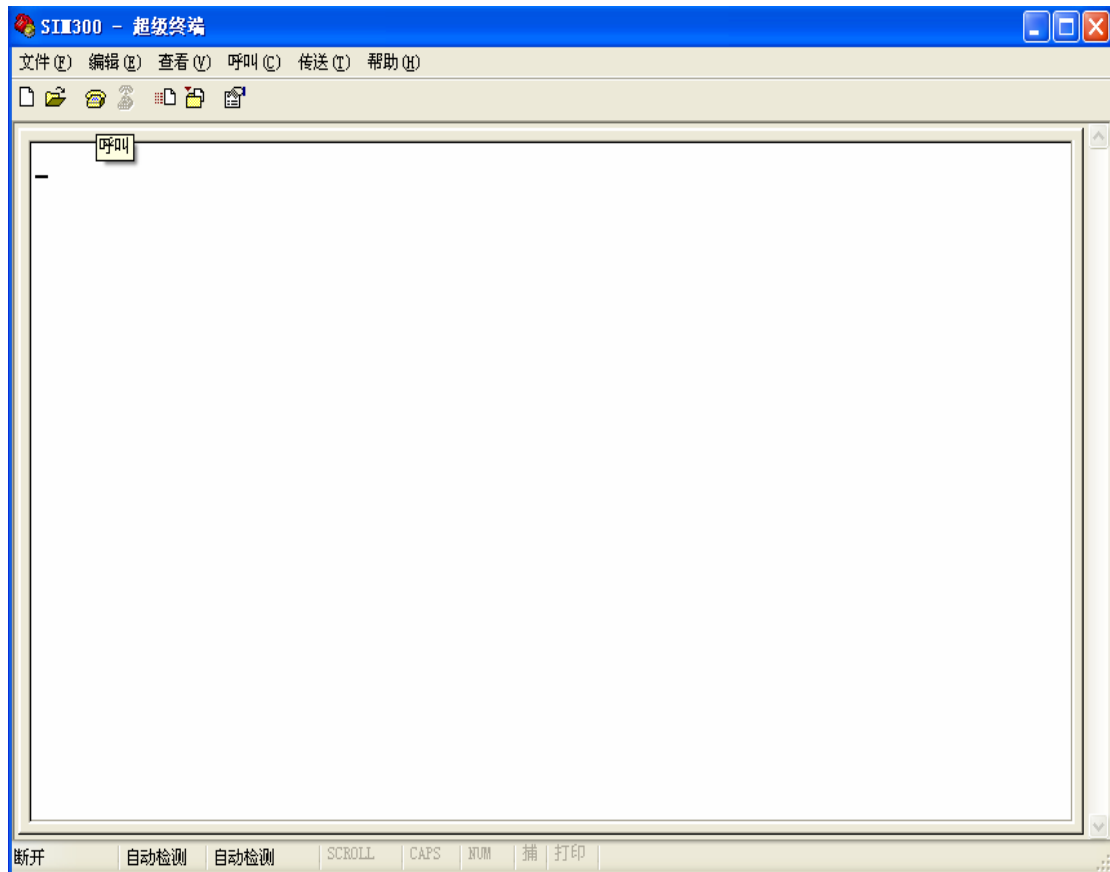




Step 2: Parameter setting (set the PC serial port and band rate)



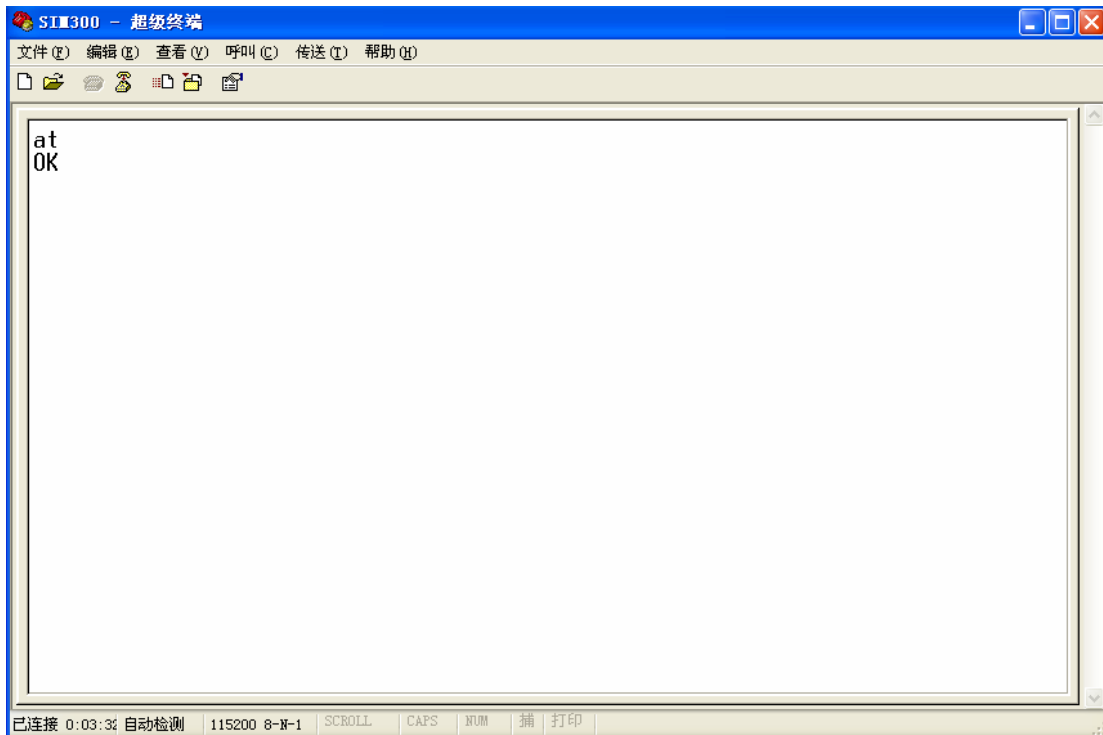




Step 3: power on the module and key in the AT command:

- 1) power on the module;
- 2) key in the “AT” and enter, if the “OK” is feedback, it indicates that the module connecting

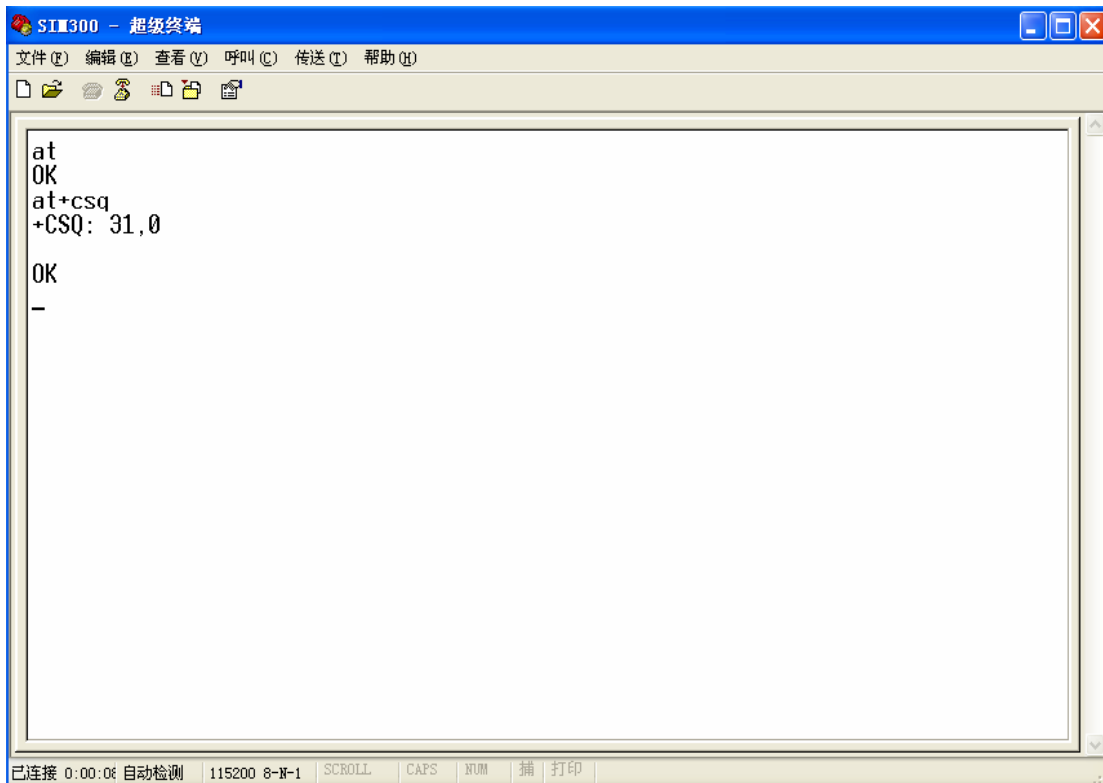
to the PC is successful;



The screenshot shows a terminal window titled "SI1300 - 超级终端". The menu bar includes "文件(F)", "编辑(E)", "查看(V)", "呼叫(C)", "传送(T)", and "帮助(H)". The main text area contains the command "at" followed by the response "OK". The status bar at the bottom indicates "已连接 0:03:33 自动检测 115200 8-N-1 SCROLL CAPS NUM 捕 打印".

```
at
OK
```

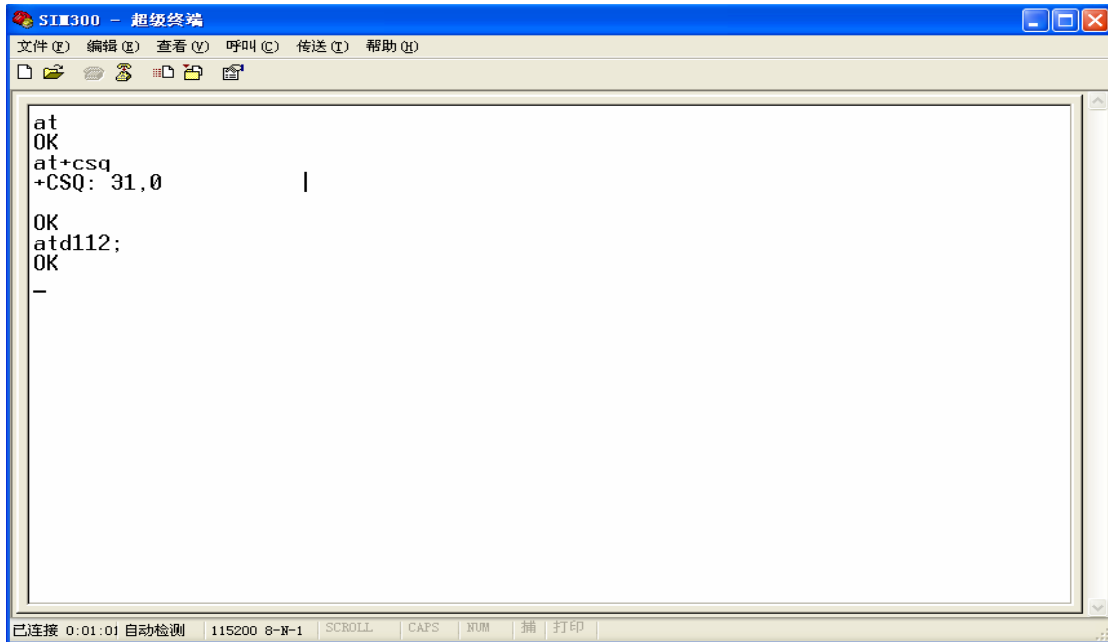
3) Key in the “AT+CSQ” and enter, if the feedback is as below, it indicates that the module connecting to the NET is successful;



The screenshot shows a terminal window titled "SI1300 - 超级终端". The menu bar includes "文件(F)", "编辑(E)", "查看(V)", "呼叫(C)", "传送(T)", and "帮助(H)". The main text area contains the command "at+csq" followed by the response "+CSQ: 31,0". Below this, the command "OK" is entered, and a hyphen "-" is shown on the next line. The status bar at the bottom indicates "已连接 0:00:06 自动检测 115200 8-N-1 SCROLL CAPS NUM 捕 打印".

```
at
OK
at+csq
+CSQ: 31,0
OK
-
```

4) Key in the “ATD112; ” and enter to set a phone call, and key in “ATH” to hang up the call;



3.3 GPRS start-up

(Please see the GPRS start-up document)

4 AT command

(please see the AT command document)

5 FCC Requirements

Please note:

- 1) The SIM340 must be designed for mobile or fixed operation only (Portable is not permitted and requires separate approval);
- 2) When the SIM340 is integrated into a final product, the FCC ID label must be visible through a window on the final device or it must be visible when an access panel, door or cover is easily removed. If not, a second label must be placed on the outside of the final device that contains the following text:

“Contains FCC ID: UDV-06060200600002”

SIM340 FCC label is shown as:



6 FCC RF exposure requirements

To allow compliance with the FCC RF exposure requirements, the SIM340's maximum output power is 33dBm in GSM850/GSM900 band and 30dBm in DCS1800/PCS1900 band, and the maximum antenna gain is 3dBi and the minimum cable loss is 0.5dB. The antenna(s) used for this transmitter must be installed to provide a separation distance of at least 20 cm from all persons and must not be co-located or operating in conjunction with any other antenna or transmitter.