



# SIM548Z GPRS Startup

**SIM548Z\_GPRS Startup\_V1.00**



Document Title:	SIM548Z GPRS Startup
Version:	1.00
Date:	
Status:	Created
Document Control ID:	SIM548Z_GPRS Startup_V1.00

**General Notes**

Simcom offers this information as a service to its customers, to support application and engineering efforts that use the products designed by Simcom. The information provided is based upon requirements specifically provided to Simcom by the customers. Simcom has not undertaken any independent search for additional relevant information, including any information that may be in the customer's possession. Furthermore, system validation of this product designed by Simcom within a larger electronic system remains the responsibility of the customer or the customer's system integrator. All specifications supplied herein are subject to change.

**Copyright**

This document contains proprietary technical information which is the property of SIMCOM Limited., copying of this document and giving it to others and the using or communication of the contents thereof, are forbidden without express authority. Offenders are liable to the payment of damages. All rights reserved in the event of grant of a patent or the registration of a utility model or design. All specification supplied herein are subject to change without notice at any time.

*Copyright © SIMCOM Limited. 2006*

## **SCOPE**

Thanks you select SIMCOM GSM/GPRS module.

This product has standard AT command interface, and can provide GSM call, short message and GPRS net services, etc.

Please read this user guide carefully. You can realize the powerful function and the easy operation method of the module.

This module is used in voice or data communication mainly. We are not charge with the duty of personal injury and property loss for the custom abnormal operation. Please design the corresponding product according to the technical specification and reference in the handbook. And note the general safe item when use mobile product especially GSM product.

This document is subject to change without notice at any time.

This document suits for SIM100S, SIM100F, SIM100C, SIM200, SIM300, SIM508Z, SIM548Z module.

## Contents

1 Introduction.....	5
1.1 References.....	5
1.2 Abbreviations .....	5
2 What you need .....	6
2.1 GPRS settings from your network provider.....	6
2.2 Modem installation and configuration .....	6
2.3 Dial-Up network installation and configuration .....	6
3 Setting up a Windows modem driver.....	7
3.1 Adding a new modem .....	7
3.2 Configuring the modem driver.....	9
4 Setting up the Dial-Up network .....	10
4.1 Adding a new connection.....	10
4.2 Configuring the setting .....	11
5 Getting Started .....	12

## 1 Introduction

This document describes how to establish a PPP connection with Microsoft Windows NT4.0 using the prototype of GSM/GPRS. Configurations and settings for other operating systems (Windows 2000/XP) may slightly different, but the general proceeding is similar.

### 1.1 References

/1/ SIMCOM\_ATC

/2/ Request for Comments: 1661 - The Point-to-Point Protocol (PPP)

/3/ Request for Comments: 1994 - PPP Challenge Handshake Authentication Protocol (CHAP)

### 1.2 Abbreviations

<b>APN</b>	Access Point Name
<b>CHAP</b>	Challenge Handshake Authentication Protocol
<b>CID</b>	Context Identity
<b>DHCP</b>	Dynamic Host Configuration Protocol
<b>DNS</b>	Domain Name Server
<b>DSB</b>	Developer Support Box
<b>GPRS</b>	General Packet Radio Service
<b>GSM</b>	Global System of Mobile Communication
<b>IP</b>	Internet Protocol
<b>OS</b>	Operating System
<b>PDP</b>	Packet Data Protocol
<b>PIN</b>	Personal Identification Number
<b>PPP</b>	Point to Point Protocol
<b>QoS</b>	Quality of Service
<b>RAS</b>	Remote Access Service
<b>ROM</b>	Read Only Memory
<b>SIM</b>	Subscriber Identity Module
<b>TCP</b>	Traffic Control Protocol

## **2 What you need**

### **2.1 GPRS settings from your network provider**

Before you can set up your device to access the GPRS network, contact your network provider to obtain the GPRS service.

### **2.2 Modem installation and configuration**

You will need to set up the modem driver. Follow the steps in chapter 3.

*Note:*

*Administrator rights for the operation system may be needed in order to install modem driver. Connect your local system administrator for advice.*

### **2.3 Dial-Up network installation and configuration**

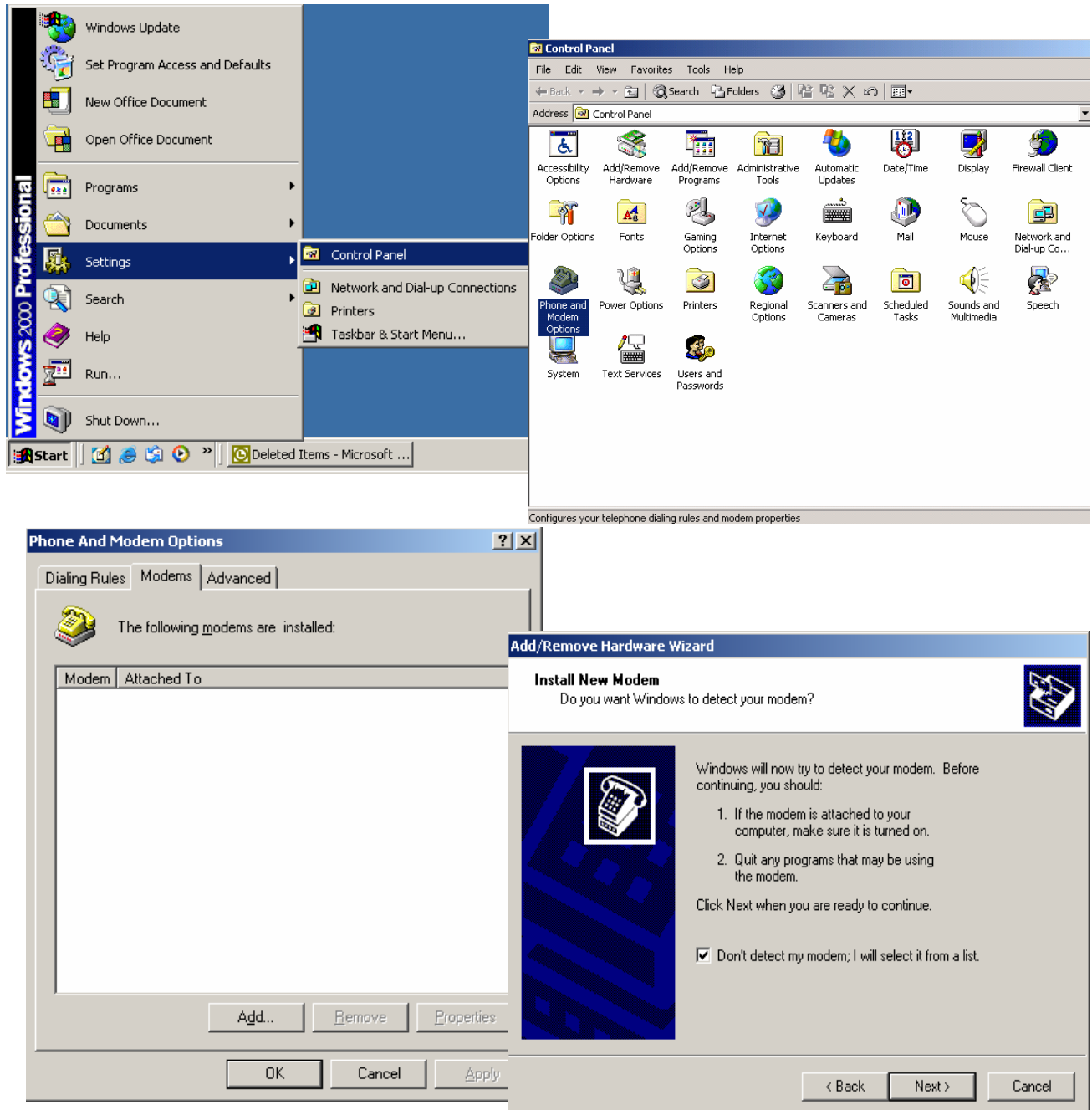
You will need to set up the Dial-Up network. Follow the steps in chapter 4.

## 3 Setting up a Windows modem driver

### 3.1 Adding a new modem

If no standard 19200bps modem has been installed, add a new standard modem to the modem section of the control panel.

Click Start -> Setting -> Control Panel -> Phone and Modem option -> Modem -> add



## SIM508Z GPRS Startup

**Add/Remove Hardware Wizard**  
**Install New Modem**

Select the manufacturer and model of your modem. If your modem is not listed, or if you have an installation disk, click Have Disk.

Manufacturers: (Standard Modem Types), 3Com, 3X, Aceex, Acer, ...  
 Models: Standard 2400 bps Modem, Standard 9600 bps Modem, Standard 14400 bps Modem, **Standard 19200 bps Modem**, Standard 28800 bps Modem, Standard 33600 bps Modem, Standard 56000 bps K56Flex Modem

Have Disk... **Add/Remove Hardware Wizard**

**Install New Modem**  
 Select the port(s) you want to install the modem on.

You have selected the following modem:  
 Standard 19200 bps Modem

On which ports do you want to install it?  
 All ports  
 Selected ports

COM1  
 COM2

**Add/Remove Hardware Wizard**  
**Install New Modem**  
 Modem installation is finished!

**Add/Remove Hardware Wizard**  
**Install New Modem**  
 Your modem has been set up successfully.

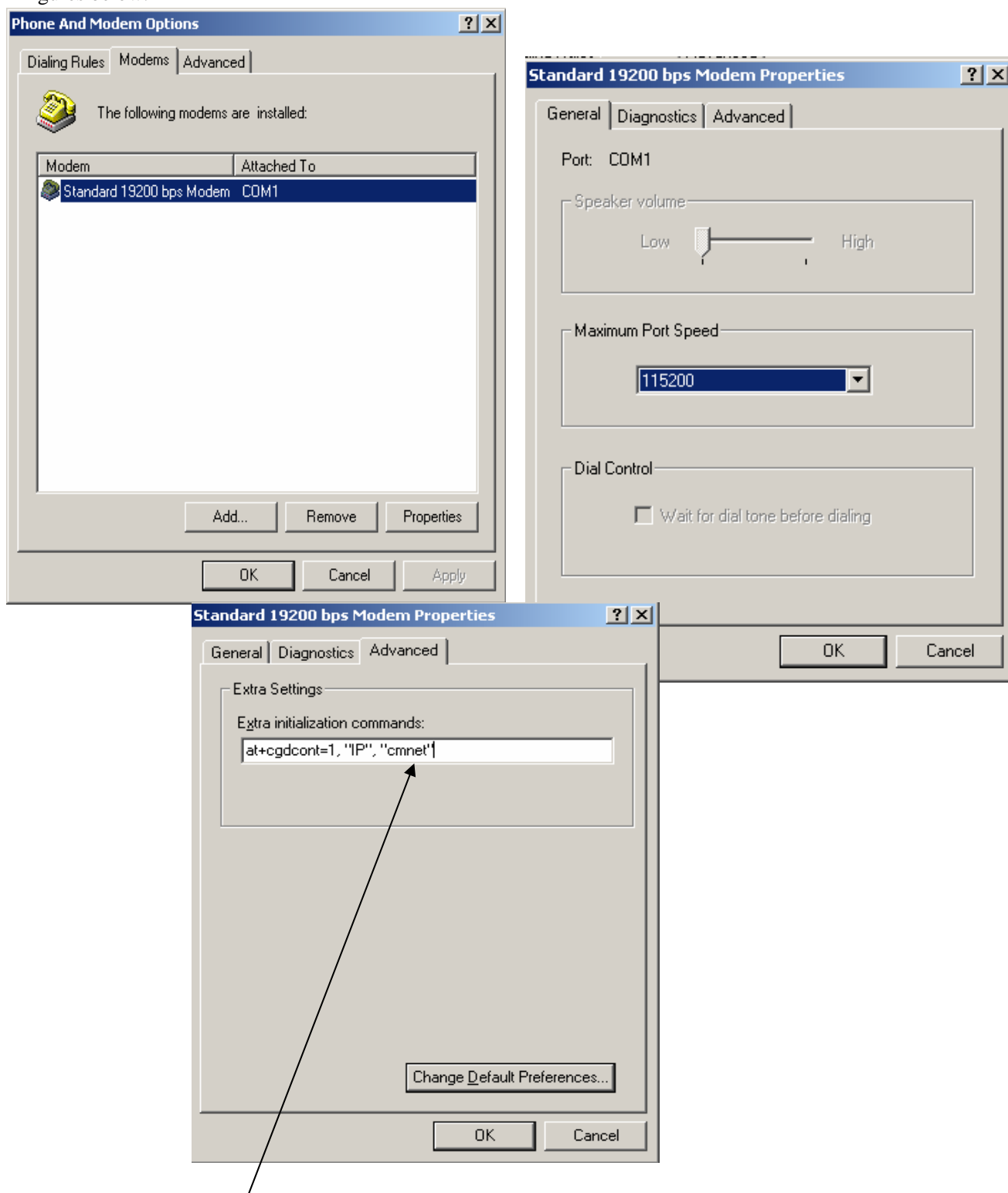
If you want to change these settings, double-click the Phone and Modem Options icon in Control Panel, click the Modems tab, select this modem, and then click Properties.

Follow the instructions on the screen and choose “19200 bps modem” and “COM1”, click “NEXT”, till to finish the configuration.



### 3.2 Configuring the modem driver

Choose the installed standard 19200bps modem, click “**Properties**”, choose it max port speed (default value: 115200), and click “**Advanced**” to configure “**Extra setting**” as illustrated in the figures below.

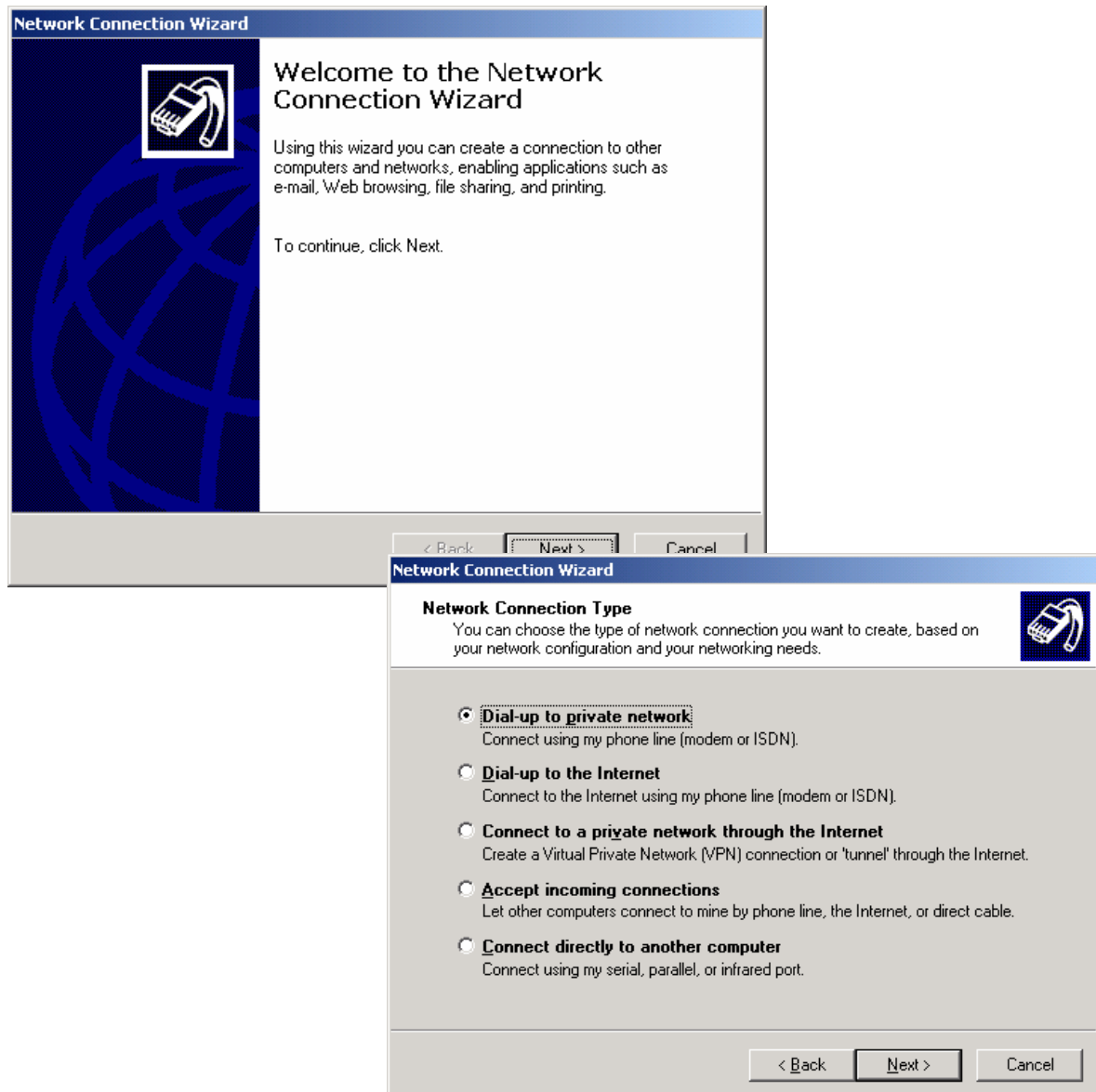


You can change the “cmnet” to your access point name (APN).

## 4 Setting up the Dial-Up network

### 4.1 Adding a new connection

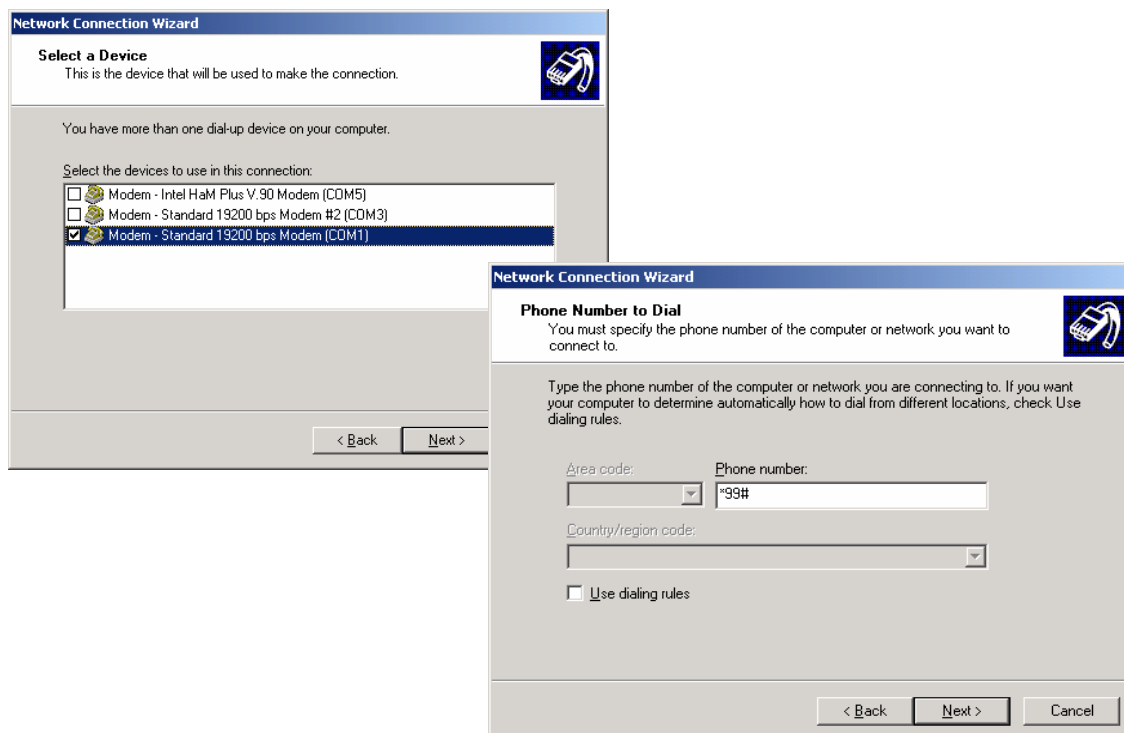
From the control panel select “Network and Dial-Up Connections” and then “Make new connection”.



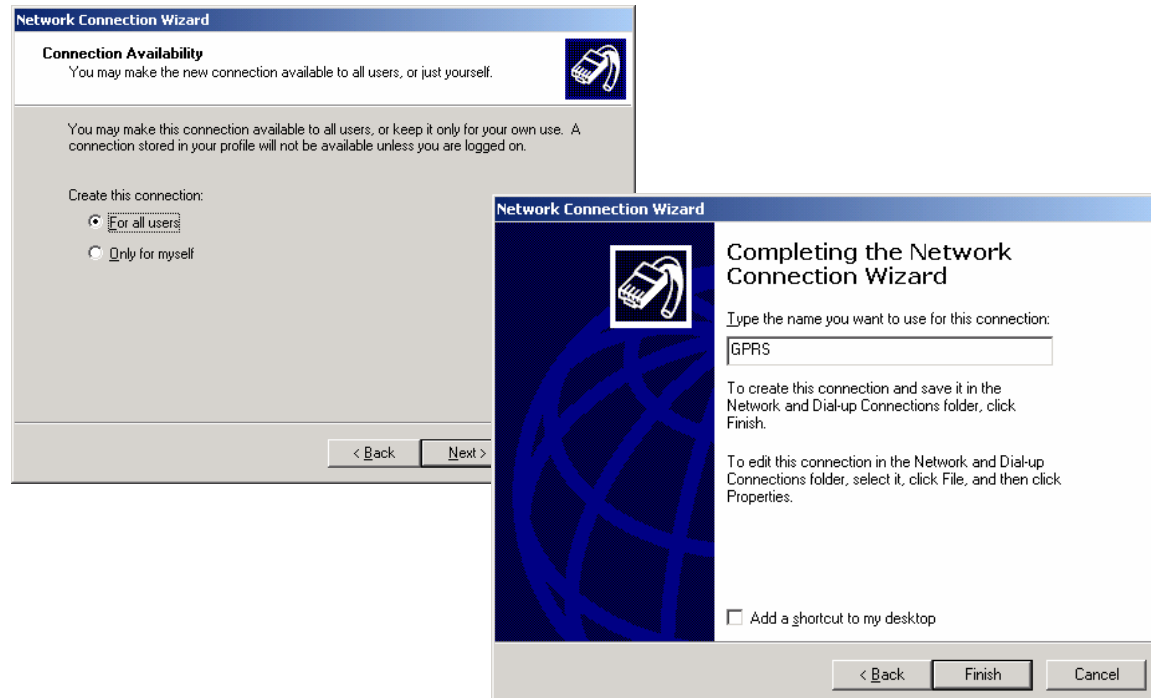
Select “Dialup to private network” -> click “Next”

## 4.2 Configuring the setting

Choose Modem – standard 19200bps modem (COM1) -> Click “Next”



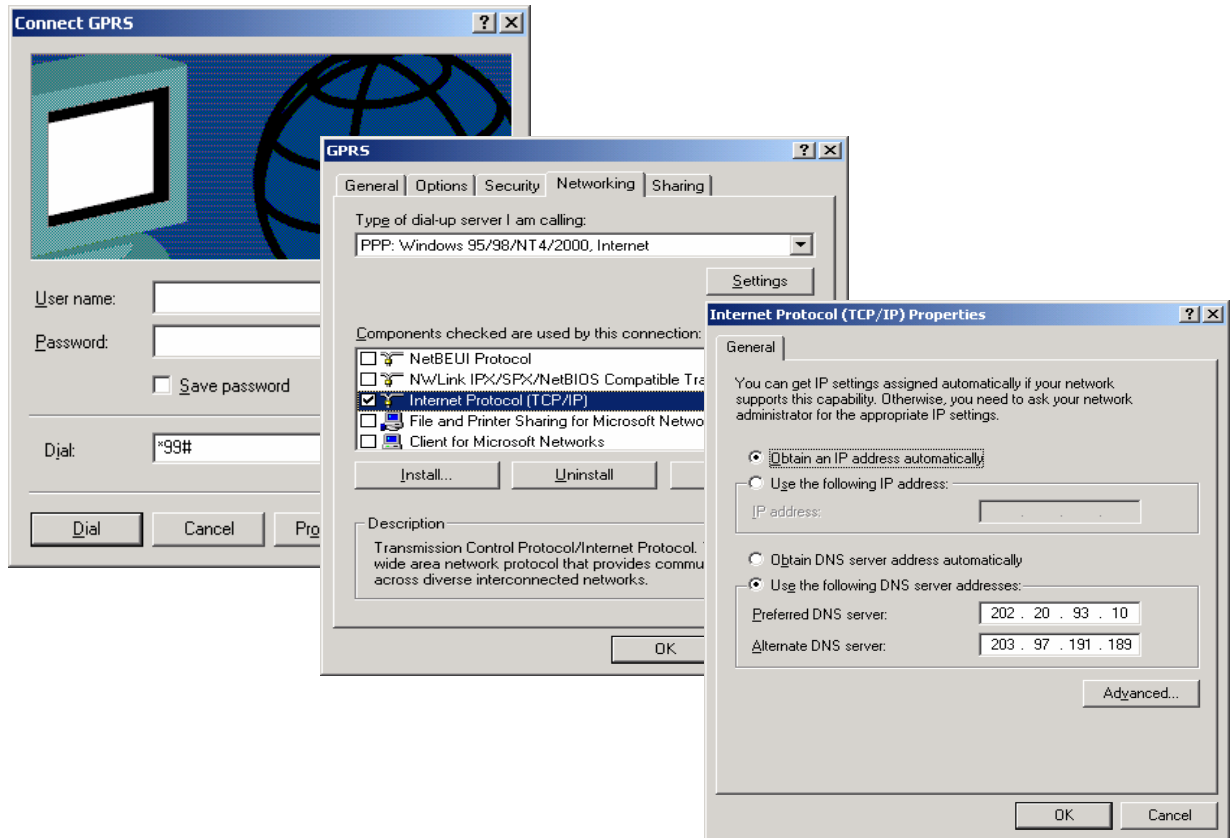
Type the number of GPRS connection (do not select “use dialing rules”) -> Click “Next”



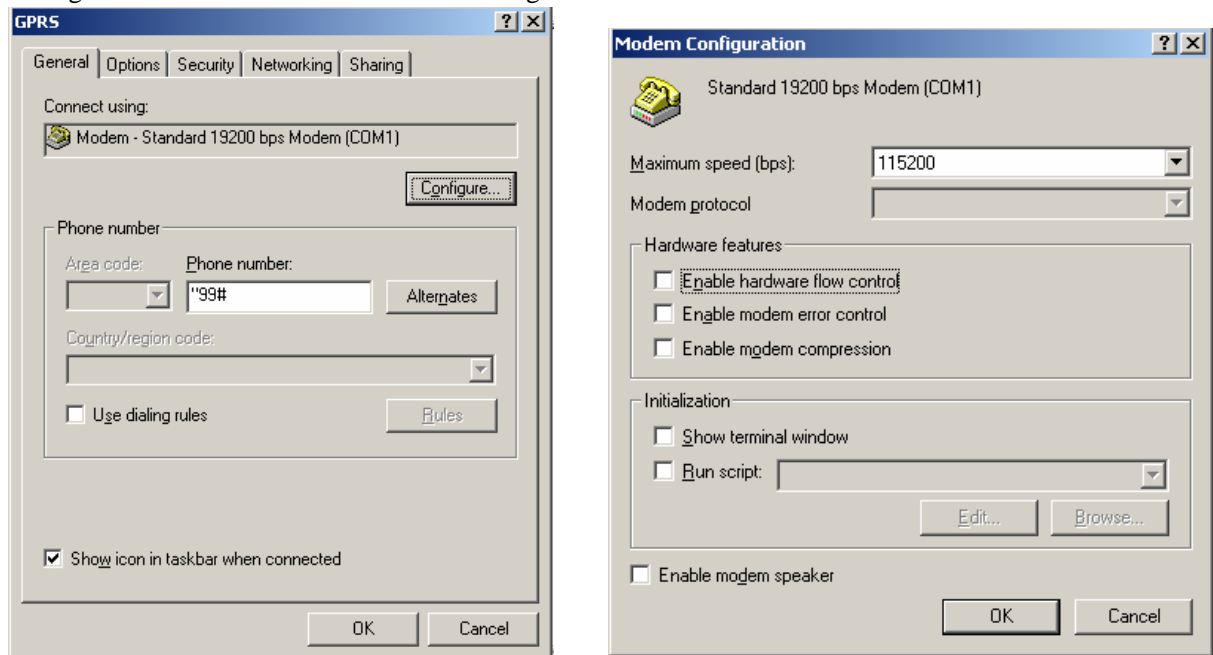
Type the name you want to use for this connection (such as “GPRS”) -> Click “Finish”

## 5 Getting Started

Ensure the “User name” and “Password” is blank

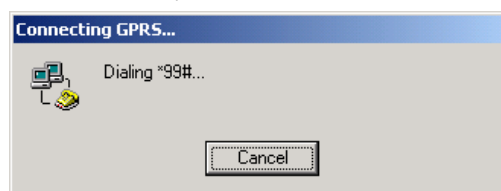
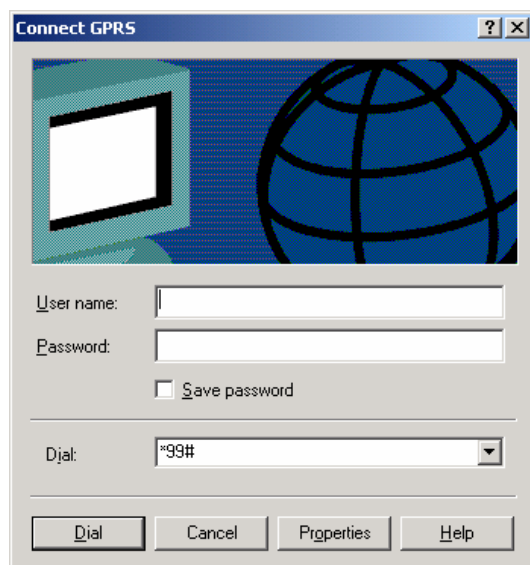


-> Choose “Networking” tab, only choose “Internet protocol (TCP/IP)” -> Click “Properties”, setting DNS -> Click “OK” to finish the configuration



## SIM508Z GPRS Startup

-> Click “**Setting**”, configure the max speed “**115200**” Click “**OK**”, the connection is complete -> Click “**Dial**”



**Contact us:**

**Shanghai SIMCom Ltd.**

Add: SIM Technology Building, No. 700, Yishan Road, Shanghai, P. R. China 200233

Tel: +86 21 5427 8900

Fax: +86 21 5427 6035

URL: [www.sim.com](http://www.sim.com)