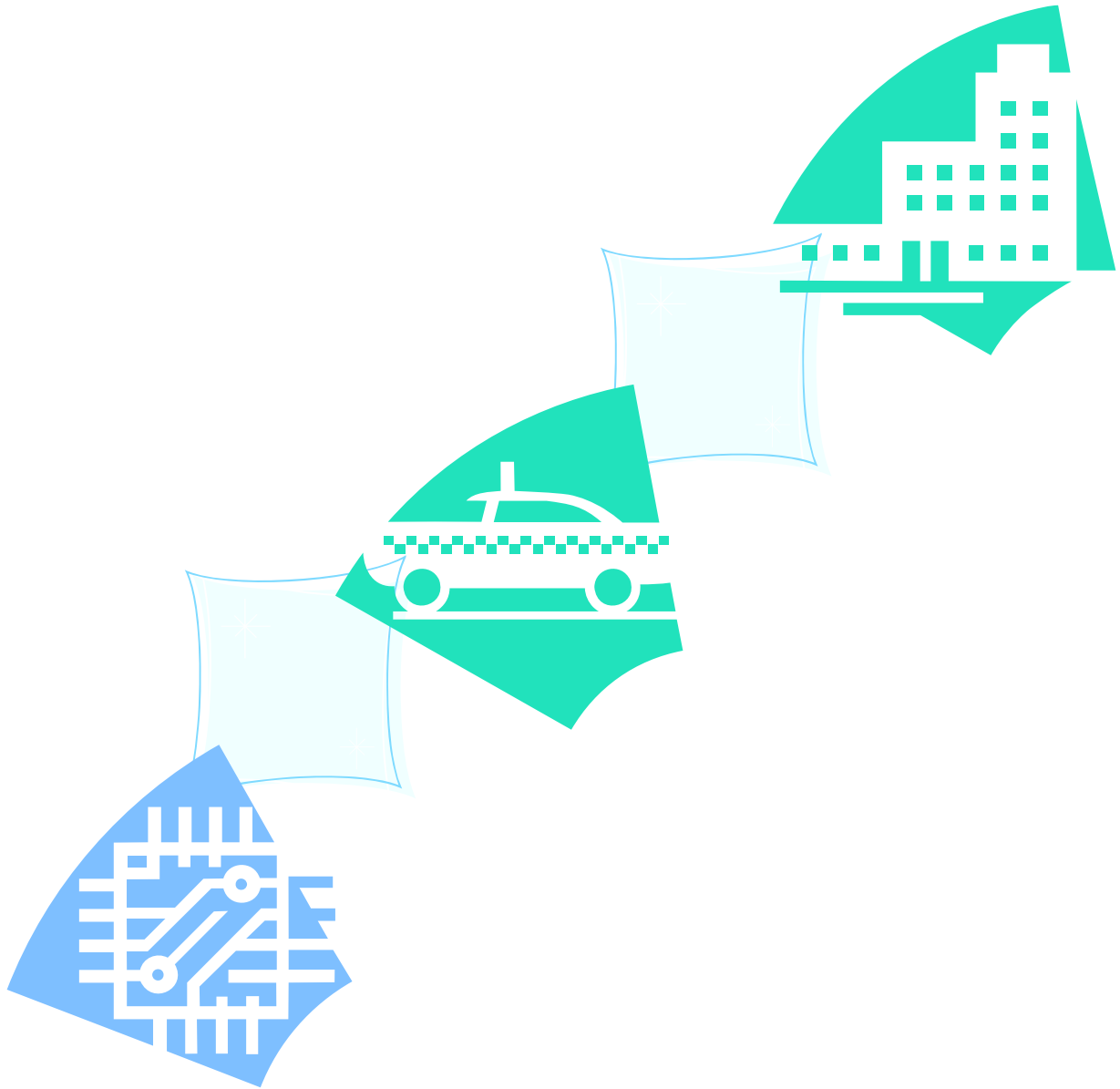


SIM508Z USER GUIDE



Document Name:	SIM508Z User Guide
Version:	1.02
Date:	2006-07-07
Doc ID:	SIM508Z_UGD_V1.02
Status:	Released

General Notes

Simcom offers this information as a service to the customers, to support application and engineering efforts that use the products designed by Simcom. The information provided is based upon requirements specifically provided to Simcom by the customers. Simcom has not undertaken any independent search for additional relevant information, including any information that may be in the customer's possession. Furthermore, system validation of this product designed by Simcom within a larger electronic system remains the responsibility of the customer or the customer's system integrator. All specifications supplied herein are subject to change.

Copyright

This document contains proprietary technical information which is the property of SIMCOM Limited., copying of this document and giving it to others and the using or communication of the contents thereof, are forbidden without express authority. Offenders are liable to the payment of damages. All rights reserved in the event of grant of a patent or the registration of a utility model or design. All specification supplied herein are subject to change without notice at any time.

Copyright © SIMCOM Limited. 2006

Contents

Contents	2
1. SIM508Z EVB Schematic	3
2. SIM508Z EVB overview	3
3. EVB Accessory	5
4. EVB Interface	6
4.1 Power interface	6
4.2 SIM card interface	7
4.3 RS232 interface	7
4.4 Antenna interface	8
4.5 Audio interface	9
5. EVB and accessory equipment	10
6. Operation	10
6.1 Power on and running	10
6.2 Connecting the Net and calling	11
6.3 Download and upgrade	11
6.4 Turn off	11
6.5 Charge	11
6.6 GPRS start-up	11
7 AT command	11
8 FCC statements	12
9 FCC RF exposure requirements	12

1. SIM508Z EVB Schematic

Please check the document of SIM508Z-EVB_schematic.pdf for detail.

2. SIM508Z EVB overview

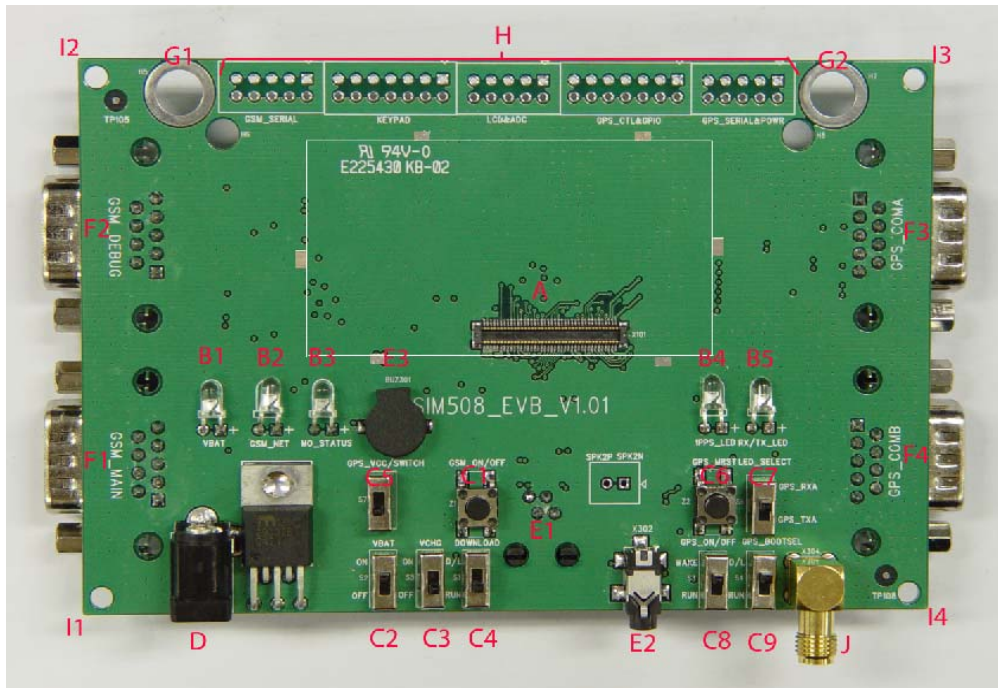


Figure 1: TOP view

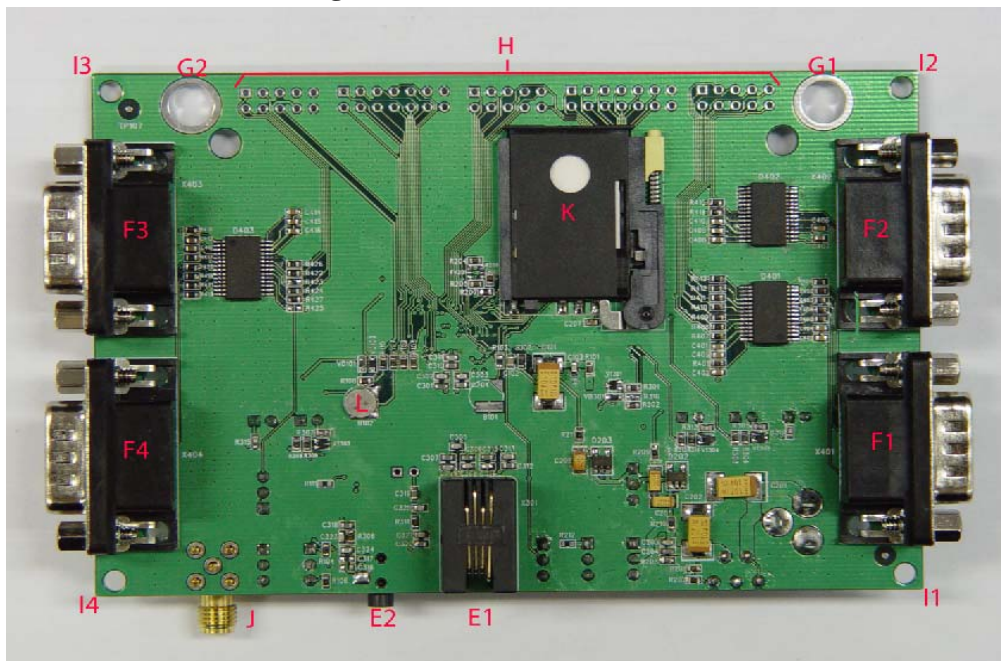


Figure 2: BOTTOM view

A: 80pin connector, SIM508Z module interface

B1-B5: LED indicator

B1: VBAT ON/OFF

B2: GSM net status

B3: The GSM part of the module ON/OFF status

B4: 1PPS output for GPS part

B5: GPS TX/RX status

C1-C9: Key control for various functions

C1: GSM part power-up / power down control (button Z1)

C2: VBAT ON/OFF control (shifter S2)

C3: VCHG ON/OFF control (shifter S5)

C4: GSM part program download control (shifter S1)

C5: GPS part power ON/OFF control (shifter S7)

C6: GPS part reset control (button Z2)

C7: GPS part RX/TX LED status selective shifter (shifter S6)

C8: GPS part wake up control (shifter S3)

C9: GPS part program download control (shifter S4)

D: Power source adapter interface

E1-E3: Audio interface

E1: Handset interface

E2: Headphone interface

E3: Buzzer

F1-F4: Serial ports

F1: Main serial port for downloading, AT command transmitting, data exchanging

F2: Debug serial port

F3: GPS part serial port A

F4: GPS part serial port B

G1-G2: Hole for antenna fixed

G1: Hole for GSM antenna fixed

G2: Hole for GPS antenna fixed

H: Expand port, such as keypad port, serial ports, display port

I1-I4: Hole for EVB board fixed

J: SMA connector for 1PPS output

K: SIM card connector

L: 3.3V Back-up battery for GPS part

3. EVB Accessory

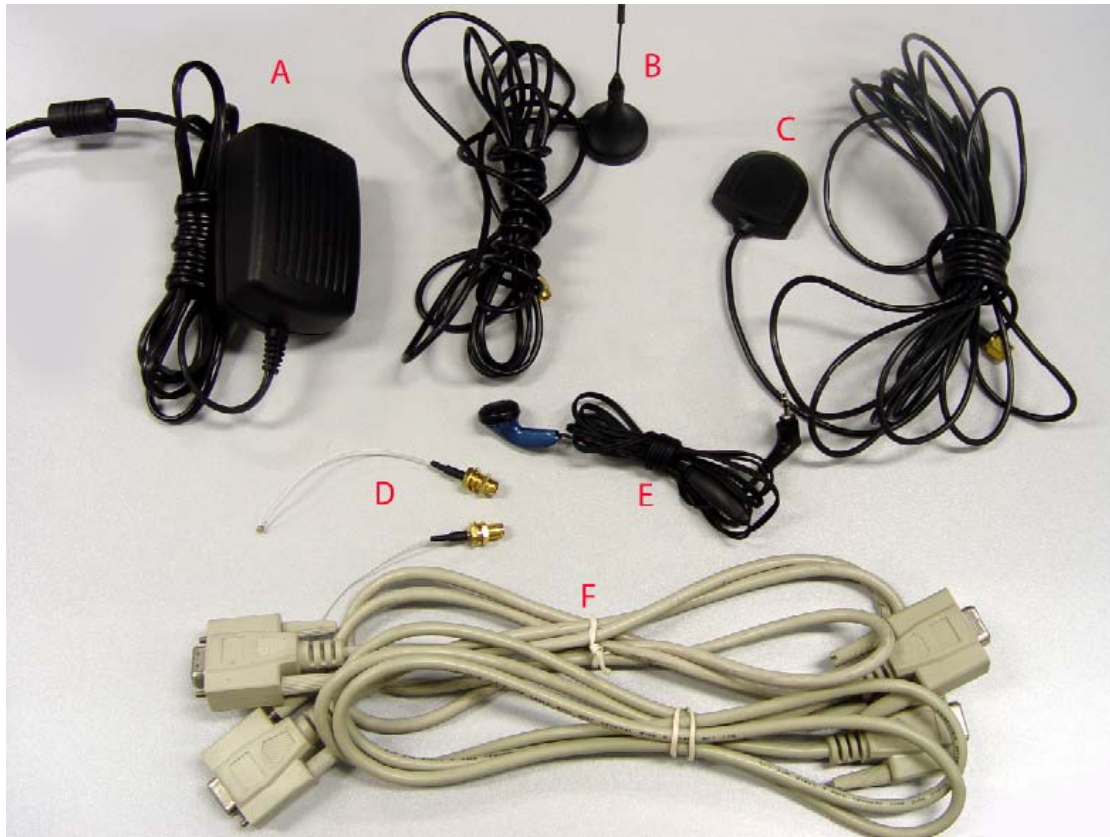


Figure 3: EVB accessory

- A: antenna
- A: 5V DC source adapter
- B: GSM antenna
- C: GPS antenna
- D: RF cable
- E: Earphone
- F: serial port line

The part number of the GSM antenna is WT-C&G-28-90; please check the document of WT-C&G-28-90.pdf for detail parameters.

4. EVB Interface

4.1 Power interface

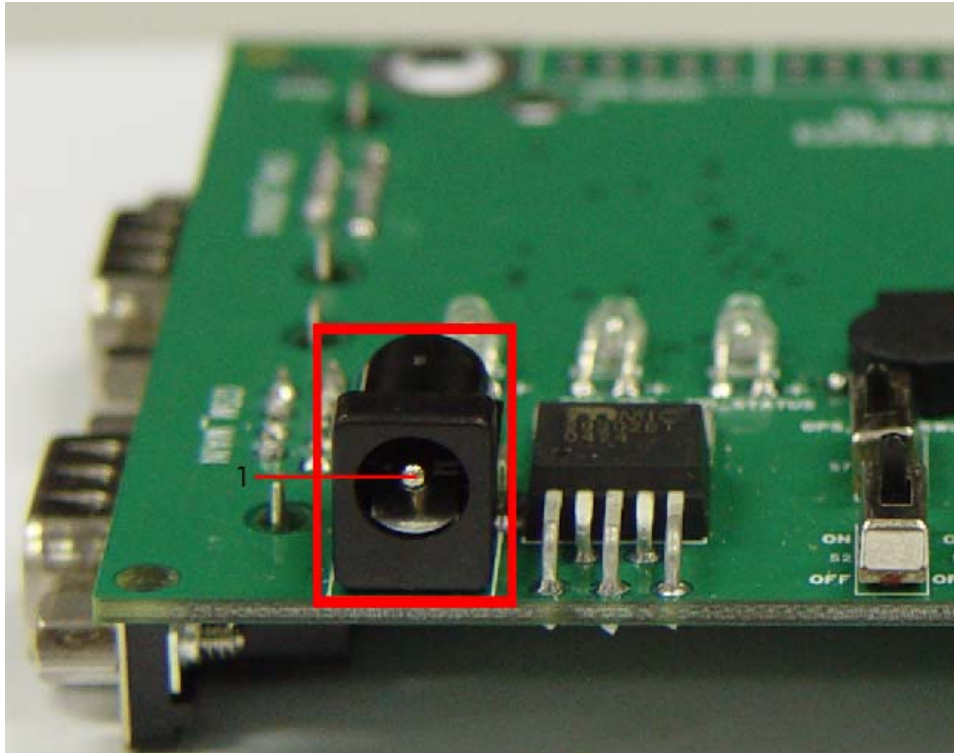


Figure 4: Power interface

Pin	Signal	I/O	Description
1	Adapter input	I	5V/2.5A DC source input

Serial Port 1

Pin	Signal	I/O	Description
1	DCD	O	Data carrier detection
2	TXD	O	Transmit data
3	RXD	I	Receive data
4	DTR	I	Data Terminal Ready
5	GND		GND
7	RTS	I	Request to Send
8	CTS	O	Clear to Send
9	RI	O	Ring Indicator

Serial Port 2

Pin	Signal	I/O	Description
2	DEBUG_TX	O	Transmit data
3	DEBUG_RX	I	Receive data
5	GND		GND

4.4 Antenna interface

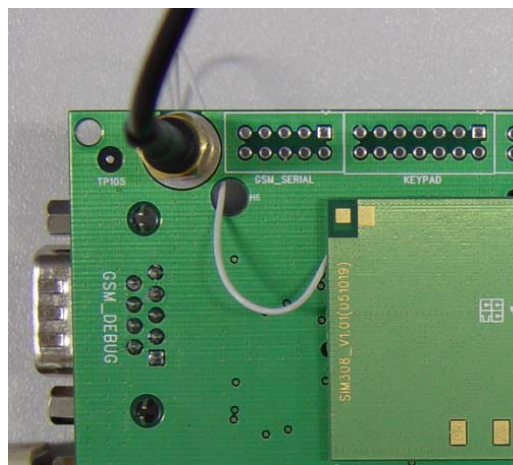
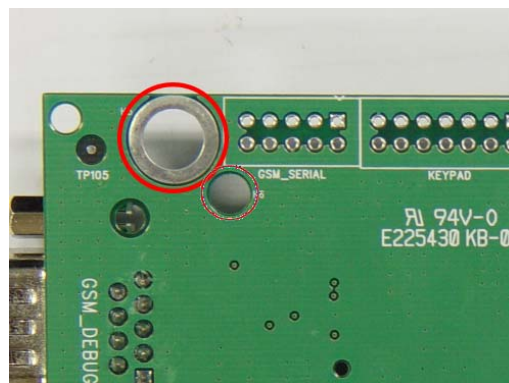


Figure 5: Antenna interface

4.5 Audio interface

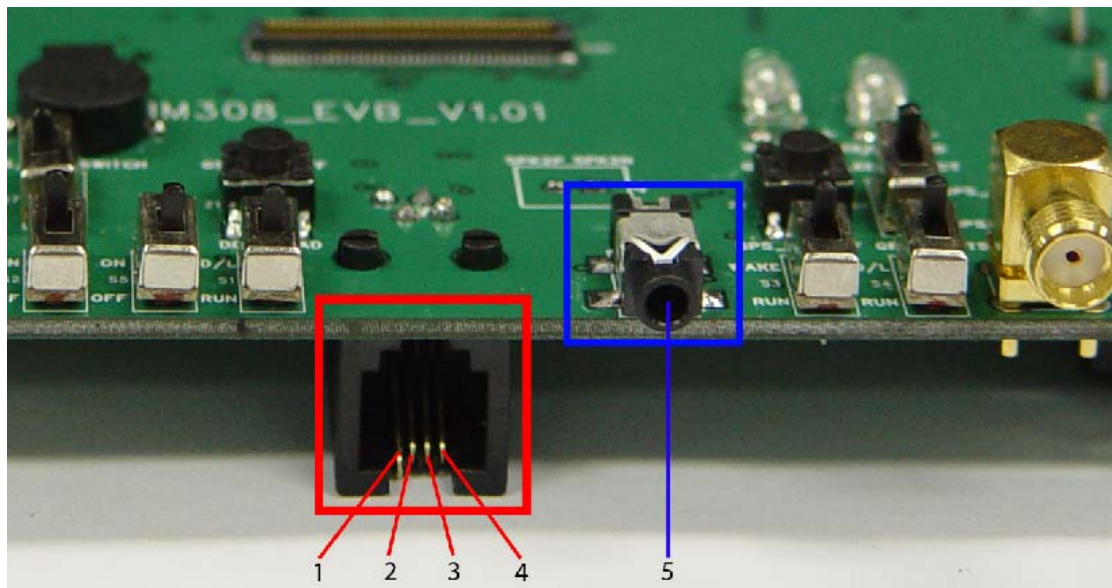


Figure 8: Audio interface

Headset interface:

Pin	Signal	I/O	Description
1	MIC1P	I	Positive microphone input
2	SPK1P	O	Positive microphone input
3	SPK1N	O	Negative microphone input
4	MIC1N	I	Negative microphone input

Headphone interface:

	Signal	Input/Output	Description
5	MIC2P&SPK2P	I/O	Auxiliary positive input and output

5. EVB and accessory equipment

At normal circumstance, the EVB and its accessory are equipped as the below figure:

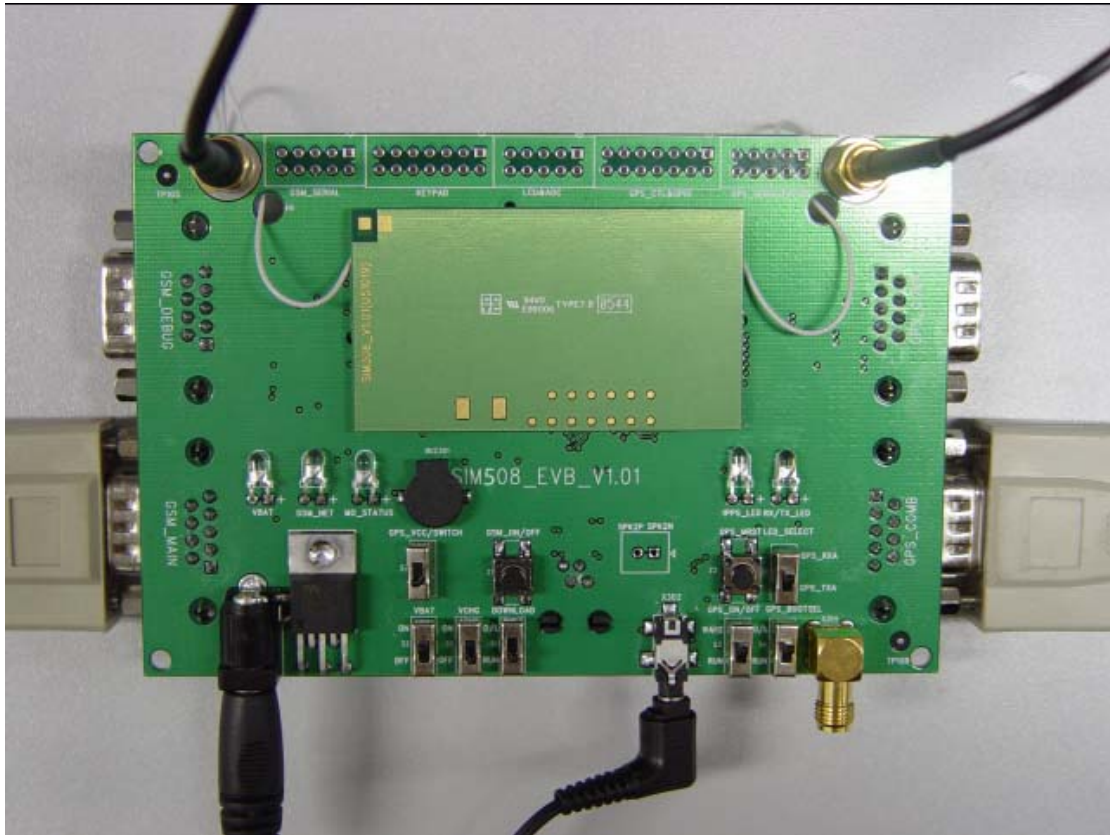


Figure 9: EVB and accessory equipment

6. Operation

Firstly, please equip the module and accessories as the figure 9.

6.1 Power on and running

- (1) Connect the SIM508Z module to the 80pins connector on the EVB, insert the 5V DC source adapter, switch S1 to the RUN state and S2 to the ON state, and the LED of B1 will light;
- (2) Press the GSM_ON/OFF button Z1 for about 2 seconds, then the module is power on successful;

You will see the LED of B2 on the EVB glittering at a certain frequency corresponding to various states, and you can judge the EVB and SIM508Z are running correctly. No function and test can be executed when the necessary accessories are not connected.

6.2 Connecting the Net and calling

(1) Connect the serial port line to the serial port 1, open the HyperTerminal (AT command windows) on your personal computer, the location of the HyperTerminal in windows2000 is START →accessory→ communication →HyperTerminal. Set the correct baud rate and COM number firstly. The default baud rate of SIM508Z is 115200bps, and the COM number is based on which port your serial port line inserts in, you should select such as COM1, COM3 or COMx etc;

(2) Connect the antenna to the SIM508Z module using an antenna transmit line, insert SIM card into the SIM card holder, and insert headphone or handset into its interface; (acts as the figure 9)

(3) Power on the module referring the description in 6.1, then type the AT command (such as ATI, AT+CSQ, ATD112 in the AT command document) in the HyperTerminal. If you get the correct response, it indicates the Hyper Terminal is successfully connected and the module is working correctly.

About AT command and its response, please refer to the document of SIM508_ATC_V1.00.pdf.

6.3 Download and upgrade

Connect the serial port line to the serial port 1, connect the DC source adapter, run the download flash tool and press the START key, then switch S2 to the ON state and S1 to the D/L state, and then the download procedure or upgrade procedure is starting.

6.4 Turn off

Press the GSM_ON/OFF button Z1 for about 1 second, SIM508Z will be turned off.

6.5 Charge

Connect the SIM508Z module to the 80pin connector interface and the external battery to charging interface provided on the EVB. Insert the DC source adapter; switch S2 to the OFF state and S5 to the ON state, then the SIM508Z goes into the charging state.

6.6 GPRS start-up

(Please see the document of GPRS Startup_V1.00.pdf)

7 AT command

(please see the document of SIM508_ATC_V1.00.pdf)

8 FCC statements

Please note:

SIM508Z complies with Part 15 of the FCC Rules. Operation is subject to the following two conditions: (1) SIM508Z may not cause harmful interference, and (2) SIM508Z must accept any interference received, including interference that may cause undesired operation. And changes or modifications not expressly approved by the party responsible for compliance could void the user's authority to operate the equipment.

9 FCC RF exposure requirements

To allow compliance with the FCC RF exposure requirements, the SIM508Z's maximum output power is 33dBm in GSM900 band and 30dBm in DCS1800/PCS1900 band, and the maximum antenna gain is 3dBi and the minimum cable loss is 0.5dB. The antenna(s) used for this transmitter must be installed to provide a separation distance of at least 20 cm from all persons and must not be co-located or operating in conjunction with any other antenna or transmitter.