

# Wireless PTT

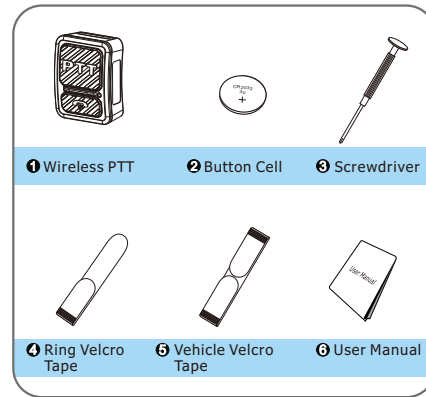
## EPTTB01



### User Manual

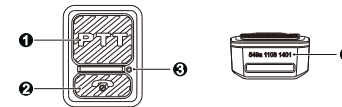
### Checking Items in the Package

Please unpack carefully and check that all items listed below are received. If any item is missing or damaged, please contact your dealer.



**Note:** The wireless PTT has been equipped with a button cell before delivery.

### Product Overview



### Parts

No.	Name
1	PTT Key
2	End/Pairing Key
3	LED Indicator
4	Address Code

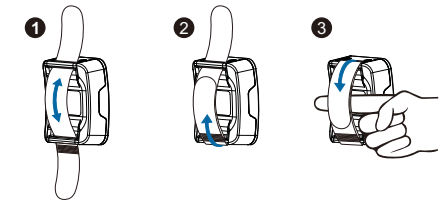
### LED Indicator

LED Indicator	Wireless PTT Status
LED flashes red and green in turn.	Pairing mode
LED flashes green five times rapidly.	Connection success
LED flashes red slowly.	Disconnected from the radio after it is out of the communication range of the radio.

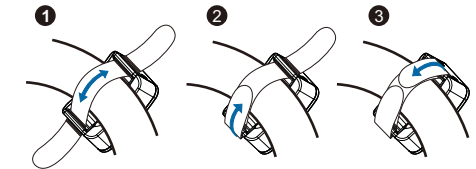
### How to Wear

Please follow the procedures below to wear the wireless PTT.

#### Wearing the wireless PTT on a finger



#### Mounting the wireless PTT to a vehicle steering wheel or a motorcycle handle



### Basic Operations

#### Pairing/Sleep

- **Pairing:** When the wireless PTT is in sleep mode, press the **End/Pairing** key to switch it to the pairing mode, and the wireless PTT turns on simultaneously.
- **Sleep:** When one of the following situations occurs, the wireless PTT will enter the sleep mode.
  1. The radio turns off when it is connected to the wireless PTT.
  2. 30 seconds later after the wireless PTT disconnects from the radio since it is out of the communication range of the radio.

#### How to Connect

##### ➤ First Use

1. Enable Bluetooth functionality of a radio.
  - Enable Bluetooth functionality of a radio with display with reference to the radio user manual. Search the wireless PTT by using the **Search Devices** menu on the radio.
  - Pair the wireless PTT with a radio without display by using the Client Programming Software (CPS).
2. When the wireless PTT is in sleep mode, press the **End/Pairing** key to switch it to the pairing mode. The wireless PTT LED flashes red and green in turn.
3. Select the wireless PTT in the device list searched

by the radio whose address code is consistent with that of your wireless PTT and pair it with the radio.

4. After pairing is successful, the wireless PTT LED flashes green five times rapidly and "Connected to the wireless PTT" information is displayed on the radio LCD.

The wireless PTT will enter the sleep mode automatically 30 seconds later after it enters the pairing mode.

##### ➤ Non-First Use

1. After entering the pairing mode:
  - The radio will connect to it automatically if it is the latest wireless PTT with which the radio was paired.
  - Refer to **First Use** for its pairing and connection with the radio if it is not the latest wireless PTT with which the radio was paired.
2. After the wireless PTT connects to the radio, the wireless PTT LED flashes green five times rapidly and "Connected to the wireless PTT" information is displayed on the radio LCD.

#### Making a Call

After the wireless PTT connects to the radio successfully, press and hold the **PTT** key to make a call via the radio.

#### Ending a Call

After the wireless PTT connects to the radio successfully and the radio works in trunking mode, press the **End/Pairing** key to end a call via the radio.

### Back Connection

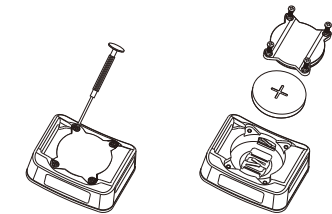
- If the wireless PTT is not in the connection coverage, it disconnects from the radio and the wireless PTT LED flashes red slowly.
- If the wireless PTT disconnects from the radio:
  1. It will connect to the radio automatically after returning to the connection coverage within 30 seconds. After connection is successful, The wireless PTT LED flashes green five times rapidly and "Connected to the wireless PTT" information is displayed the radio LCD.
  2. It will enter the sleep mode automatically if it does not return to the connection coverage within 30 seconds.

**Note:** The unobstructed communication coverage between the wireless PTT and the radio is up to 10 meters.

### Replacing the Button Cell

- Please replace the button cell if one of the following phenomena occurs:
  1. "Low wireless PTT power, please replace the button cell" information is displayed on the radio LCD.
  2. If the wireless PTT disconnects from the radio, it fails to enter the pairing mode after you press the **End/Pairing** key.
- **Procedure**
  - Step 1** Remove the velcro tape from the wireless PTT .
  - Step 2** Remove the four screws from the wireless PTT rear case by using the screwdriver provided in the package.

- Step 3** Open the rear case and take the button cell out.
- Step 4** Put the new button cell in the cell case with the positive terminal facing the rear case.
- Step 5** Close the rear case and tighten the screws.



### Troubleshooting

Phenomena	Analysis	Solution
Auto back connection is unsuccessful.	The wireless PTT is not in the connection coverage.	Make sure the wireless PTT is in the connection coverage of 10 meters and connect it to the radio again.
The wireless PTT fails to enter the pairing mode when it disconnects from the radio.	The button cell power is low.	Replace the button cell.
The radio LED does not flash red after the PTT key is pressed.	The wireless PTT is not in the connection coverage.	Make sure the wireless PTT is in the connection coverage.
	The wireless PTT disconnects from the radio.	Try to connect the wireless PTT to the radio again.

**Warning Statements:**

The device complies with RF specifications when the device used at 10mm from your body.

**IC statements**

This device complies with Industry Canada license-exempt RSS standard(s). Operation is subject to the following two conditions: (1) this device may not cause interference, and (2) this device must accept any interference, including interference that may cause undesired operation of the device.

Le présent appareil est conforme aux CNR d'Industrie Canada applicables aux appareils radio exempts de licence. L'exploitation est autorisée aux deux conditions suivantes : (1) l'appareil ne doit pas produire de brouillage, et (2) l'utilisateur de l'appareil doit accepter tout brouillage radioélectrique subi, même si le brouillage est susceptible d'en compromettre le fonctionnement.

**FCC statements****§ 15.19 Labelling requirements.**

This device complies with part 15 of the FCC Rules. Operation is subject to the following two conditions: (1) This device may not cause harmful interference, and (2) this device must accept any interference received, including interference that may cause undesired operation.

**§ 15.21 Information to user.**

Any Changes or modifications not expressly approved by the party responsible for compliance could void the user's authority to operate the equipment.