



## Large Frame Walk-Behind Snowthrowers

### 9.5HP Snowthrowers

**Mfg. No. Description**

1694867	9560E, 9.5HP Snowthrower
1694914	9560EX, 9.5HP Snowthrower (CE)

### 10.5HP Snowthrowers

**Mfg. No. Description**

1694847	10560E, 10.5HP Snowthrower
1694848	10560EX, 10.5HP Snowthrower (CE)

### 11.5HP Snowthrowers

**Mfg. No. Description**

1694849	11570E, 11.5HP Snowthrower
1694850	E11570, 11.5HP Snowthrower (CE)

### 13HP Snowthrowers

**Mfg. No. Description**

1694851	1380E, 13HP Snowthrower
1694852	E1380, 13HP Snowthrower (CE)
1694872	1390E, 13HP Snowthrower
1694915	1390EX, 13HP Snowthrower (CE)

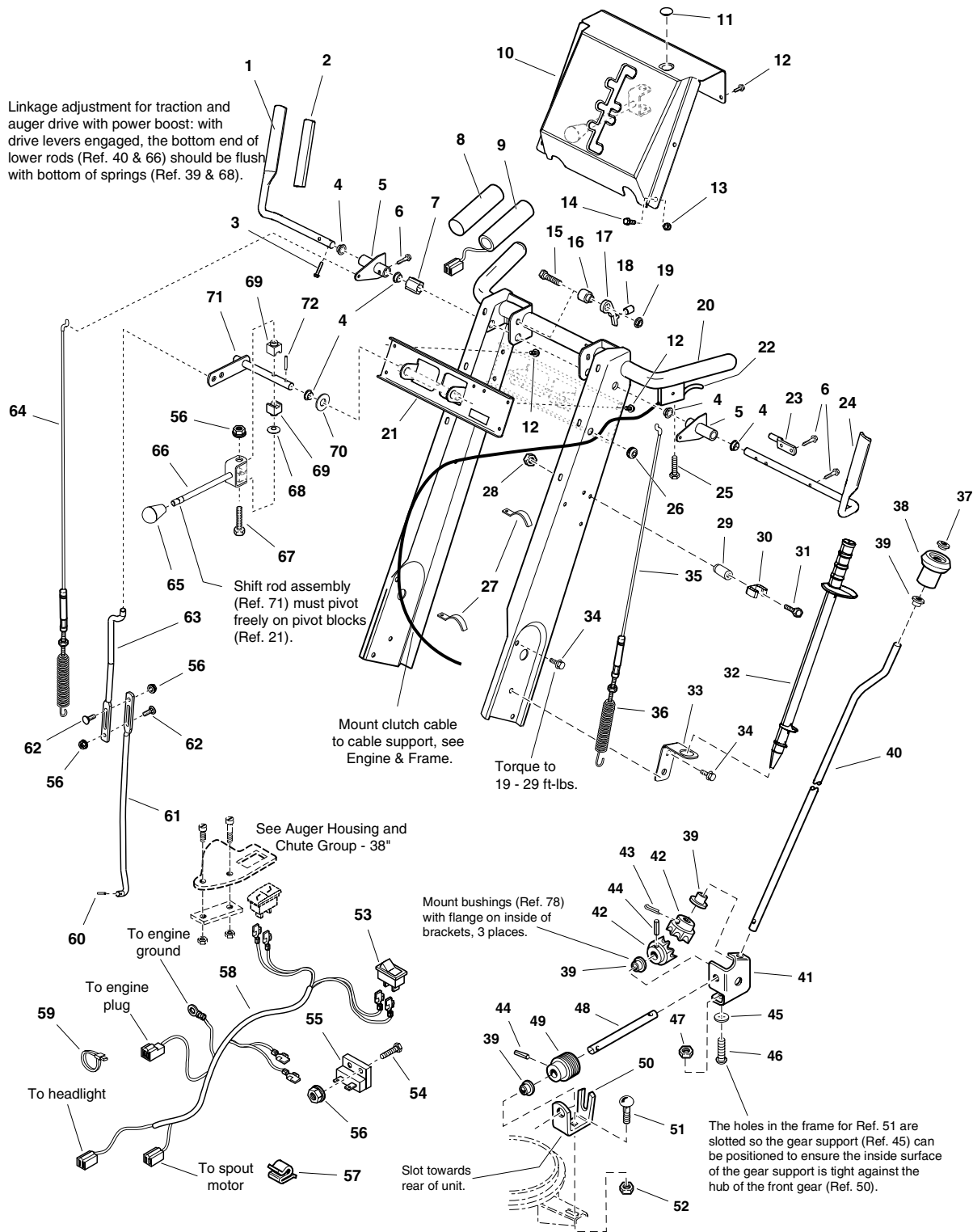


<b>PRODUCT COMPONENTS</b>	<b>PAGES</b>
Handles and Controls Group - Channel .....	4
Handles and Controls Group .....	8
Engine and Frame Group .....	12
Engine and Frame Group with Power Boost .....	16
Auger and Impeller Group .....	20
Auger Housing and Chute Group - 24, 28 & 32 inch .....	24
Auger Housing and Chute Group - 38" Models .....	28
Traction Drive Group .....	32
Wheels & Tires Group .....	36
Decal Group .....	38
Headlight Group .....	40
<b>Torque Specification Chart .....</b>	<b>Inside Back Cover</b>

# Handles and Controls Group - Channel

987044

**NOTE: Unless noted otherwise, use the standard hardware torque specification chart.**



**The above parts group applies to the following Mfg. Nos.:**

- |                   |                  |
|-------------------|------------------|
| 1694847 - 10560E  | 1694872 - 1390E  |
| 1694848 - 10560EX | 1694915 - 1390EX |
| 1694849 - 11570E  |                  |
| 1694850 - E11570  |                  |
| 1694851 - 1380E   |                  |
| 1694852 - E1380   |                  |

## Handles and Controls Group - Channel

REF NO	PART NO.	QTY.	DESCRIPTION
1	1727128	1	HANDLE, Clutch R.H.
2	1668608	2	GRIP, Handle Clutch, Black
3	1928732	1	CAPSCREW, Hex Washer Head Taptite #10-24 x 1
4	1729104	5	BUSHING, 1/2 ID x 3/4 OD x 1/4, Plastic
5	1725205A	2	LEVER & TUBE ASSEMBLY, Clutch
6	1960471	4	CAPSCREW, Hex Washer Head Taptite #12-24 x 1
7	1705899	1	GUIDE, Control
8	1726317	2	GRIP, Black Soft 1 in. (24 in. & 28 in. Models Only)
9	1723965	2	HAND GRIP, Heated 1 in. (32 & 38 in. Models Only)
10	1667800C	1	DASHBOARD
11	1724489	1	PLUG, Button (38 in. Models Only)
12	1925592	6	CAPSCREW, Hex Washer Head Taptite 1/4-20 x 3/4
13	1930641	4	NUT, Hex Flange Whiz Lock 1/4-20
14	1935450	4	CAPSCREW, Hex Washer Head, 1/4-20 x 3/4 G5
15	1933689	1	CAPSCREW, Hex Flange Whiz Lock, 5/16-18 x 1-1/2
16	1678579	1	SPACER, 21/64 ID x 13/16 OD x 15/16
17	1705898	1	LATCH, Control
18	1701342	1	SPRING, Compression
19	1960686	1	NUT, Hex Flange 5/16-18 ESNA
20	1729855C	1	HANDLE ASSEMBLY, Channel
21	1723935A	1	BRACKET, Shift Control
22	1718791	1	CABLE & HANDLE ASSEMBLY, Clutch L.H.
23	1677453	1	ROD, Control 2 in. Flat
24	1727127	1	HANDLE, Clutch L.H.
25	1725702	1	SCREW, Pan Head Torx #10 x 1/2 Thick Cut
26	1664022	1	GROMMET, 1/2
27	2834683	1	CLIP, Wire
28	1933896	1	NUT, Hex Lock 10-24 with Nylon Insert NC3B (Quantity 3 used no 32 in. models)
29	1678392	1	SPACER, 17/64 ID x 3/8 OD x 21/64
30	1726728	1	CLIP, Clean Out Tool
31	1960589	1	SCREW, Phillips #10-24 x 3/4
32	7075909	1	TOOL, Clean Out
33	1726727A	1	BRACKET, Clean Out Tool
34	1960729	6	CAPSCREW, Hex Serrated Flange Tap, 5/16-18 x 1
35	1728115	1	CABLE ASSEMBLY, LH (Includes Ref. No. 36)
36	1707452	1	SPRING, Extension 3-11/32 Long
37	1960093	1	NUT, Push Pal (Used on all models Except 38 in. Models)
38	1714084	1	KNOB, Spinner, Soft (Used on all modles Except 38 in. Models)
39	1667588	4	BUSHING, 3/8 ID x 7/16 OD x 13/64, Nylon (Used on all models Except 38 in. Models)
40	1715658	1	ROD, Chute Control, 27 in. Long (Used on all models Except 38 in. Models)
41	1718793	1	SUPPORT, Gear (Used on all models Except 38 in. Models)
42	1718593	2	GEAR, Powered Metal (Used on all models Except 38 in. Models)
43	1918452	1	PIN, Cotter 1/8 x 1 (Used on all models Except 38 in. Models)
44	2816168	2	PIN, Spring 1/8 x 3/4 (Used on all models Except 38 in. Models)

### Footnotes

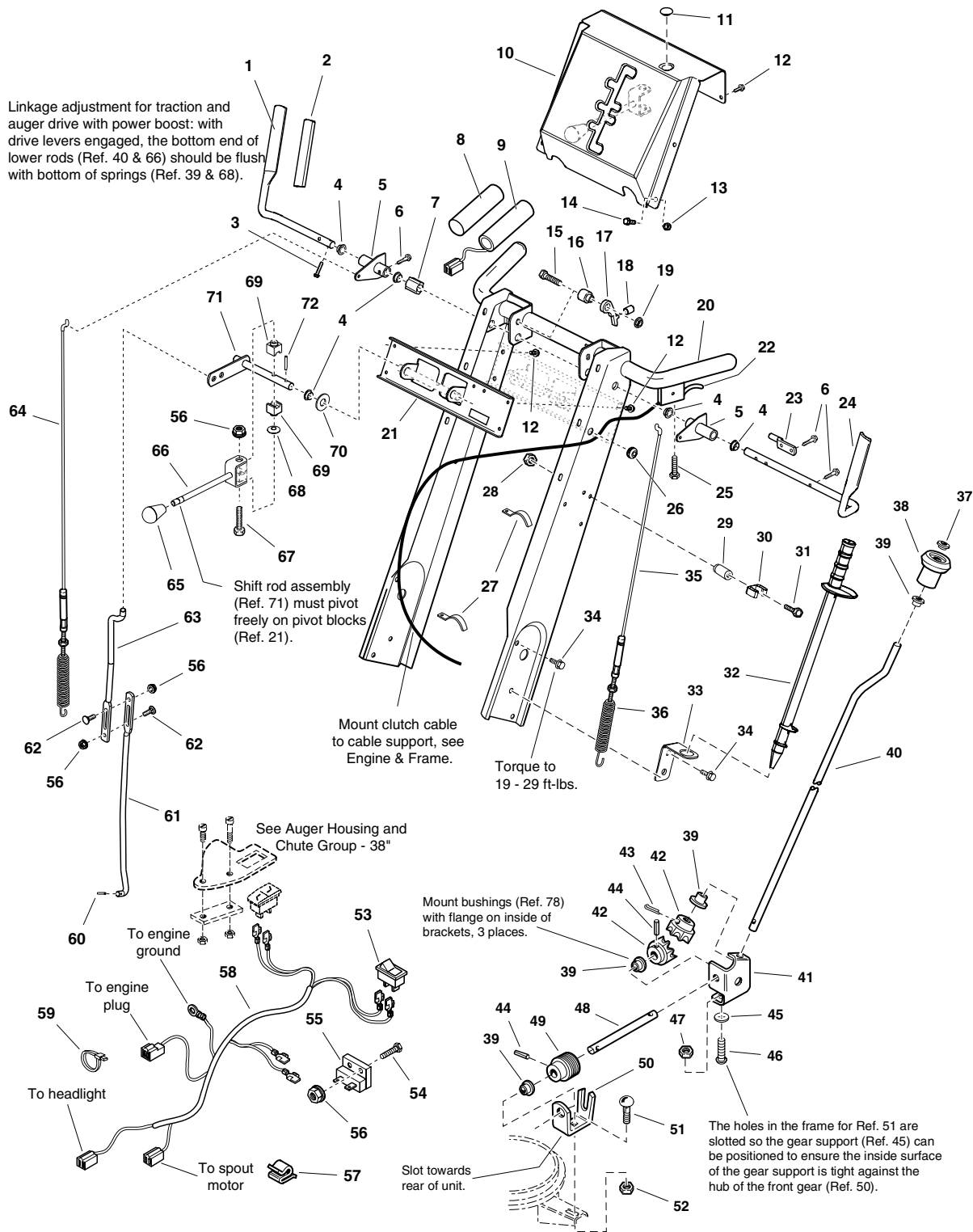
#### The above parts group applies to the following Mfg. Nos.:

1694847 - 10560E                      1694872 - 1390E  
 1694848 - 10560EX                    1694915 - 1390EX  
 1694849 - 11570E  
 1694850 - E11570  
 1694851 - 1380E  
 1694852 - E1380

# Handles and Controls Group - Channel

987044

**NOTE: Unless noted otherwise, use the standard hardware torque specification chart.**



**The above parts group applies to the following Mfg. Nos.:**

- |                   |                  |
|-------------------|------------------|
| 1694847 - 10560E  | 1694872 - 1390E  |
| 1694848 - 10560EX | 1694915 - 1390EX |
| 1694849 - 11570E  |                  |
| 1694850 - E11570  |                  |
| 1694851 - 1380E   |                  |
| 1694852 - E1380   |                  |

## **Handles and Controls Group - Channel**

<b>REF NO</b>	<b>PART NO.</b>	<b>QTY.</b>	<b>DESCRIPTION</b>
45	1960518	2	NUT, Push for 1/4 Diameter Thread
46	1960252	2	CARRIAGE BOLT, 1/4-20 x 5/8 G5 (Used on all models Except 38 in. Models)
47	1960294	2	NUT, Hex Flange Whiz Lock, 1/4-20 Small (Used on all models Except 38 in. Models)
48	1725283	1	ROD, Chute Worm, 18 Long (Used on all models Except 38 in. Models)
49	1668186	1	WORM, Chute, L.H. (Used on all models Except 38 in. Models)
50	1611911	1	SUPPORT, Worm (Used on all models Except 38 in. Models)
51	1931333	1	CARRIAGE BOLT, 5/16-18 x 3/4 G5 (Used on all models Except 38 in. Models)
52	1960684	1	NUT, Hex KEPS Conical Washer, 5/16-18 (Used on all models Except 38 in. Models)
53	1723967	1	SWITCH, Hand Warmer (32 & 38 in. Models Only)
54	1923341	1	CAPSCREW, Hex Head, 1/4-20 x 3/4 G5 (32 & 38 in. Models Only)
55	1724037	1	RESISTOR BLOCK, Male Terminal (32 & 38 in. Models Only)
56	1960685	4	NUT, Hex KEPS, 1/4-20 Conical Washer
57	2172434	1	CLIP, Wire (Spout Rotator Models Only)
58	1725439	1	HARNESS, Wiring (Handwarmer Models Only)
58	1728968	1	HARNESS, Wiring (Handwarmer & Spout Rotator Models Only)
59	2825094	3	TIE, Self Locking 7-5/16 (32 & 38 in. Models Only)
60	1722460	1	PIN, Quick
61	1666255	1	ROD, Lower Shift 15-21/64 Long
62	1931317	2	CARRIAGE BOLT, 1/4-20 x 3/4 G5
63	1726304	1	ROD, Upper Shift 11-3/8 Long
64	1728114	1	CABLE ASSEMBLY, RH
65	1713844	1	KNOB, Hole
66	1714120	1	ROD & CLEVIS ASSEMBLY, Shift
67	1960705	1	CAPSCREW, Hex Flange Whiz Lock 1/4-20 x 2-1/4
68	1668681	1	WASHER, Curved
69	1668524	2	BLOCK, Pivot, Powdered Metal
70	1924361	1	WASHER, 1/2
71	1674567	1	ROD & ARM ASSEMBLY, Pivot
72	1960074	1	CLIP, Hair Pin

### **Footnotes**

---

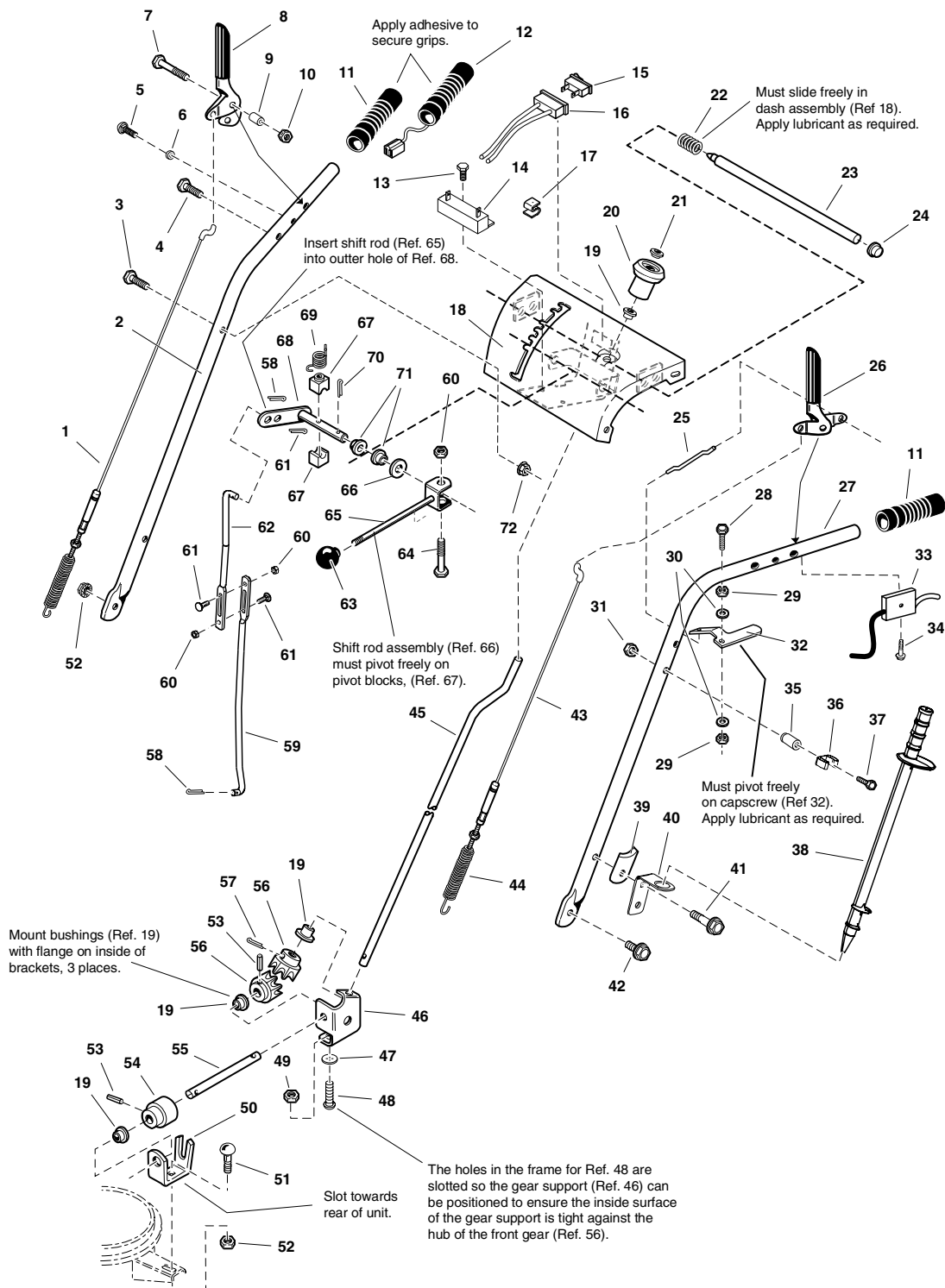
#### **The above parts group applies to the following Mfg. Nos.:**

1694847 - 10560E                      1694872 - 1390E  
1694848 - 10560EX                    1694915 - 1390EX  
1694849 - 11570E  
1694850 - E11570  
1694851 - 1380E  
1694852 - E1380

# Handles and Controls Group

987161

**NOTE: Unless noted otherwise, use the standard hardware torque specification chart.**



**The above parts group applies to the following Mfg. Nos.:**

- 1694867 - 9560E
- 1694914 - 9560EX



## Handles and Controls Group

REF NO	PART NO.	QTY.	DESCRIPTION
1	1726833	1	CABLE AND SPRING ASSEMBLY, R.H. Auger
2	1731334A	1	HANDLE, Tube, R.H.
3	1922127	1	CAPSCREW, Hex Head, 5/16-18 x 1-3/4 G5
4	1921221	3	CAPSCREW, Hex Head, 5/16-18 x 1-1/2 G5
5	1960671	2	SCREW, Pan Head Torx, 1/4-20 x 3/4, Thread Cutting
6	1715654	2	SPACER, 1/4ID x 25/64OD x 11/64LG
7	1922837	2	CAPSCREW, Hex Head, 1/4-20 x 1-1/2 G5
8	1722638	1	HANDLE, Clutch R.H.
9	1715655	2	SPACER
10	1923358	2	NUT, Hex Centerlock, 1/4-20
11	1726317	2	GRIP
12	1723965	2	HAND GRIP, Heated 1" Diameter
13	1923341	3	CAPSCREW, Hex Head 1/4-20 x 3/4 G5
14	1724037	1	RESISTOR BLOCK, 2 Male Terminal
15	1723967	1	SWITCH, Hand Warmer
16	1728968	1	HARNESS, Wiring
17	1715956	1	CLIP, Wire
18	1726983A	1	DASH AND SUPPORT ASSEMBLY, Tubular
19	1667588	4	BUSHING, 47/125ID x 437/1000OD x 1/5LG
20	1714084	1	KNOB, Spinner
21	1960093	1	NUT, Push Pal, 3/8" Diameter Stud Capped
22	1722690	1	SPRING, Complete
23	1722633	1	ROD AND SPRING ASSEMBLY, w/Pin (Includes Ref. No. 24)
24	1960519	1	PUSH NUT, Stud Cap, 1/2
25	1722630	1	ROD, 4/25" Diameter, E-Coat
26	1722667	1	HANDLE, Clutch L.H.
27	1731333A	1	HANDLE, Tube, L.H.
28	1960662	1	CAPSCREW, Hex Head, 1/4-20 x 2 G5
29	1920397	2	NUT, Hex Lock ESNA Light, 1/4-20NC-3B
30	1921319	2	WASHER, 1/4
31	1933896	1	NUT, Hex Lock, 10-24
32	1722631A	1	LEVER, Pivot
33	1718791	1	CABLE AND HANDLE ASSEMBLY, Clutch
34	1725702	1	SCREW, Pan Head Torx, #10 x 1/2 Thread Cut
35	1726995	1	SPACER, 1-1/4 LG Beveled End
36	1726728	1	CLIP, Snow Stick
37	1960727	1	SCREW, Hex Flange Slot, #10-24 x 2-1/2
38	7075909	1	STICK, Snow Removal
39	1720452	2	CLAMP, Saddle Snow Handle E-Coat
40	1726727A	1	BRACKET, Clean Out Tool
41	1960730	2	CAPSCREW, Hex Head Serrated Flange Taptite, 5/16-18 x 2 G5
42	1960729	1	CAPSCREW, Hex Whiz Lock Flange, 5/16-18 x 1
43	1726832	1	CABLE AND SPRING ASSEMBLY, L.H. Traction (Includes Ref. No. 44)
44	1707452	1	SPRING, Extension

### Footnotes

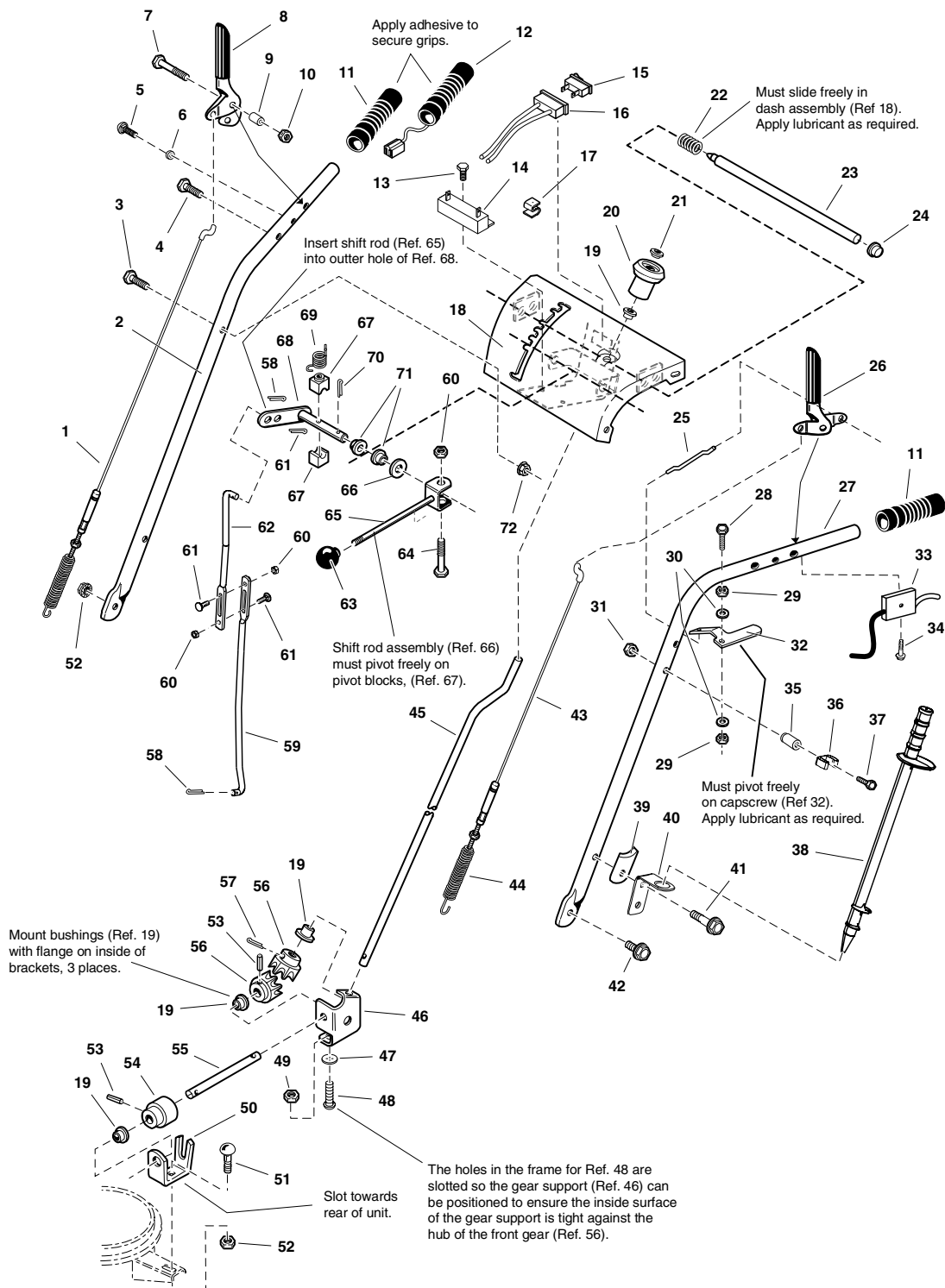
The above parts group applies to the following Mfg. Nos.:

1694867 - 9560E  
1694914 - 9560EX

# Handles and Controls Group

987161

**NOTE:** Unless noted otherwise,  
use the standard hardware torque  
specification chart.



**The above parts group applies to the following Mfg. Nos.:**

- 1694867 - 9560E
- 1694914 - 9560EX

## **Handles and Controls Group**

<b>REF NO</b>	<b>PART NO.</b>	<b>QTY.</b>	<b>DESCRIPTION</b>
45	1727088	1	ROD, 3/8" Diameter, 26"LG, E-Coat
46	1718793	1	SUPPORT, Gear
47	1960518	2	NUT, Push for 1/4 Diameter Thread
48	1960252	2	CARRIAGE BOLT, 1/4-20 x 5/8 G5
49	1960294	2	NUT, Hex Flange, 1/4-20, Whiz Lock Small
50	1611911	1	SUPPORT, Worm
51	1931333	1	CARRIAGE BOLT, 5/16-18 x 3/4 G5
52	1960684	2	NUT, Hex Keps, 5/16-18, Conical Washer
53	2816168	2	PIN, Spring 1/8 x 3/4
54	1668186	1	WORM, Chute, L.H.
55	1725283	1	ROD, 3/8" Diameter, Chute Worm E-Coat
56	1718593	2	GEAR, Powdered Metal, Metafusion
57	1918452	1	PIN, Cotter 1/4 x 1
58	1722460	1	PIN, Quick
59	1666255	1	ROD, 3/4" Diameter
60	1960685	3	NUT, Hex KEPS, 1/4-20, Conical Washer
61	1931317	2	CARRIAGE BOLT, 1/4-20 x 3/4 G5
62	1726304	1	ROD, 3/4" Diameter, Shift Upper E-Coat, 11-19/50LG
63	1726734	1	KNOB, Intermediate Thread, 3/8-16
64	1960705	1	SCREW, Hex Whiz Lock Flange, 1/4-20 x 2-1/4
65	1668523	1	ROD AND CLEVIS ASSEMBLY, Shift, Threaded
66	1924361	1	WASHER, 1/2
67	1668524	2	BLOCK, Pivot, 3/4 x 3/4, Powdered Metal
68	1720240	1	ROD AND ARM ASSEMBLY, Pivot
69	1715123	1	SPRING, Torsion
70	1960074	1	CLIP, Hair Pin
71	1668185	2	BUSHING, 1/2ID x 3/4OD x 1/4LG
72	1960686	4	NUT, Hex Flange, 5/16-18 ESNA

## **Footnotes**

---

**The above parts group applies to the following Mfg. Nos.:**

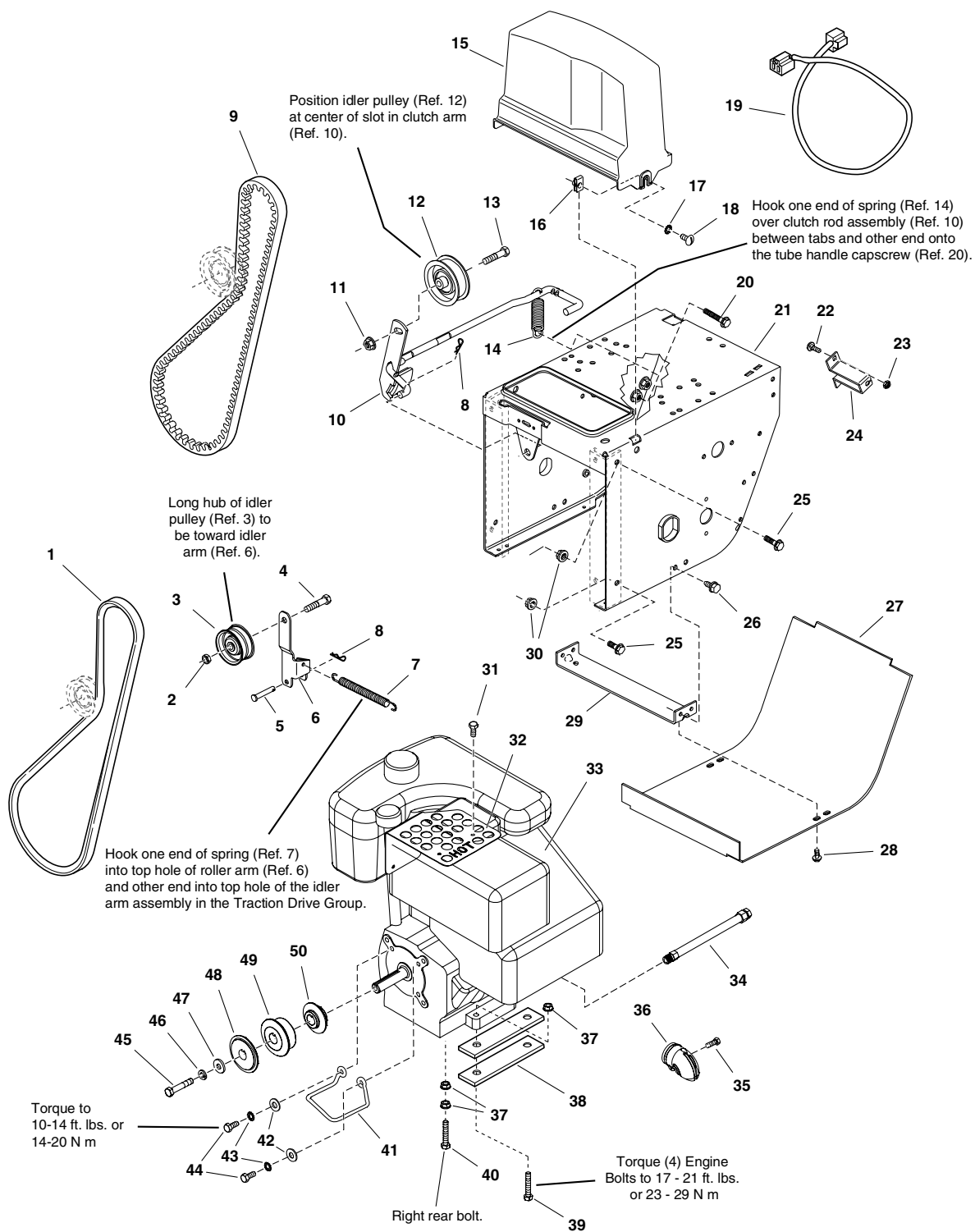
1694867 - 9560E

1694914 - 9560EX

# Engine and Frame Group

987035

**NOTE:** Unless noted otherwise, use the standard hardware torque specification chart.



**The above parts group applies to the following Mfg. Nos.:**

1694867 - 9560E  
1694914 - 9560EX

## Engine and Frame Group

REF NO	PART NO.	QTY.	DESCRIPTION
1	1700415	1	MV-BELT, 3L
2	1928731	1	NUT, Hex, Toplock, Jam, 3/8-16
3	1668477	4	PULLEY, Idler
4	1960647	1	SCREW, Hex Head, 3/8-16 x 1-1/2
5	1665994	1	PIN, Flat Head Drilled
6	1703046A	1	ARM, Idler, 5-3/4 LG
7	1727149	1	SPRING, Extension
8	1722460	2	PIN, Quick
9	1701257	1	V-BELT, HA
10	1729646A	1	ROD AND ARM ASSEMBLY, Clutch, Brake
11	1928352	1	NUT, Hex Flange, 3/8-16 Whiz Lock Large
12	1726348	1	PULLEY, Idler
13	2860709	1	CAPSCREW, Hex Whiz Lock Flange, 3/8-16 x 1-3/4
14	2159106	1	SPRING, Extension, 4-1/4 Long
15	1725287	1	COVER, Belt
16	1935255	2	NUT, Speed, 5/16-18, Lug Type
17	2820426	2	LOCKWASHER, External Tooth, 5/16
18	1918249	2	SCREW, Truss head Slotted, 5/16-18 x 3/4
19	1724064	1	CORD, Electric Extension
20	1921221	1	CAPSCREW, Hex Head, 5/16-18 x 1-1/2 G5
21	1726568C	1	FRAME ASSEMBLY, Chain/Tube Handles
22	1931317	2	CARRIAGE BOLT, 1/4-20 x 3/4 G5
23	1960685	2	NUT, Hex KEPS, 1/4-20, Conical Washer
24	1720404A	1	SUPPORT, Clutch Cable, 16GA
25	1930591	4	SCREW, Hex Whiz Lock Flange, 5/16-18 x 3/4
26	1664847	4	CAPSCREW, Hex Washer Head Taptite, 5/16-18 x 3/4
27	1726870C	1	COVER, Bottom Frame, 20GA
28	1925003	2	SCREW, Hex Washer Head Taptite, 1/4-20 x 1/2
29	1727004A	1	SUPPORT, Tie Bar
30	1927557	4	NUT, Hex Flange, 5/16-18, Whiz Lock Large
31	1929477	3	SCREW, Hex Washer Head Taptite, #10-24 x 1/2
32	1725664A	1	GUARD, Muffler, 18GA
33	*	1	ENGINE, 9.5HP B&S Electric Start Engine Model: 20A414 Engine Type: 0111E1
33	*	1	ENGINE, 9.5HP B&S Electric Start Engine (CE Models) Model: 20A414 Engine Type: 0113E1
34	1726942	1	HOSE, Oil Drain, w/Fittings
35	1727033	1	SCREW, Muffler Deflector
36	1727032	1	DEFLECTOR, Rain Guard, B&S Snow Muffler
37	2831277	4	NUT, Hex Flange, 5/16-18, Whiz Lock Small
38	1725326A	4	SUPPORT, Engine Riser, 3/8" Thick, 1-1/4 x 4-31/50
39	1935159	3	CAPSCREW, Hex Whiz Lock Flange, 5/16-18 x 2-1/4
40	2821719	1	CAPSCREW, Hex Head, 5/16-18 x 2-1/2 G5
41	1727785	1	STOP, Belt
42	1919326	2	WASHER, 5/16
43	1917356	2	LOCKWASHER, Spring, 5/16

### Footnotes

\* See your local Briggs & Stratton distributor for Parts & Service.

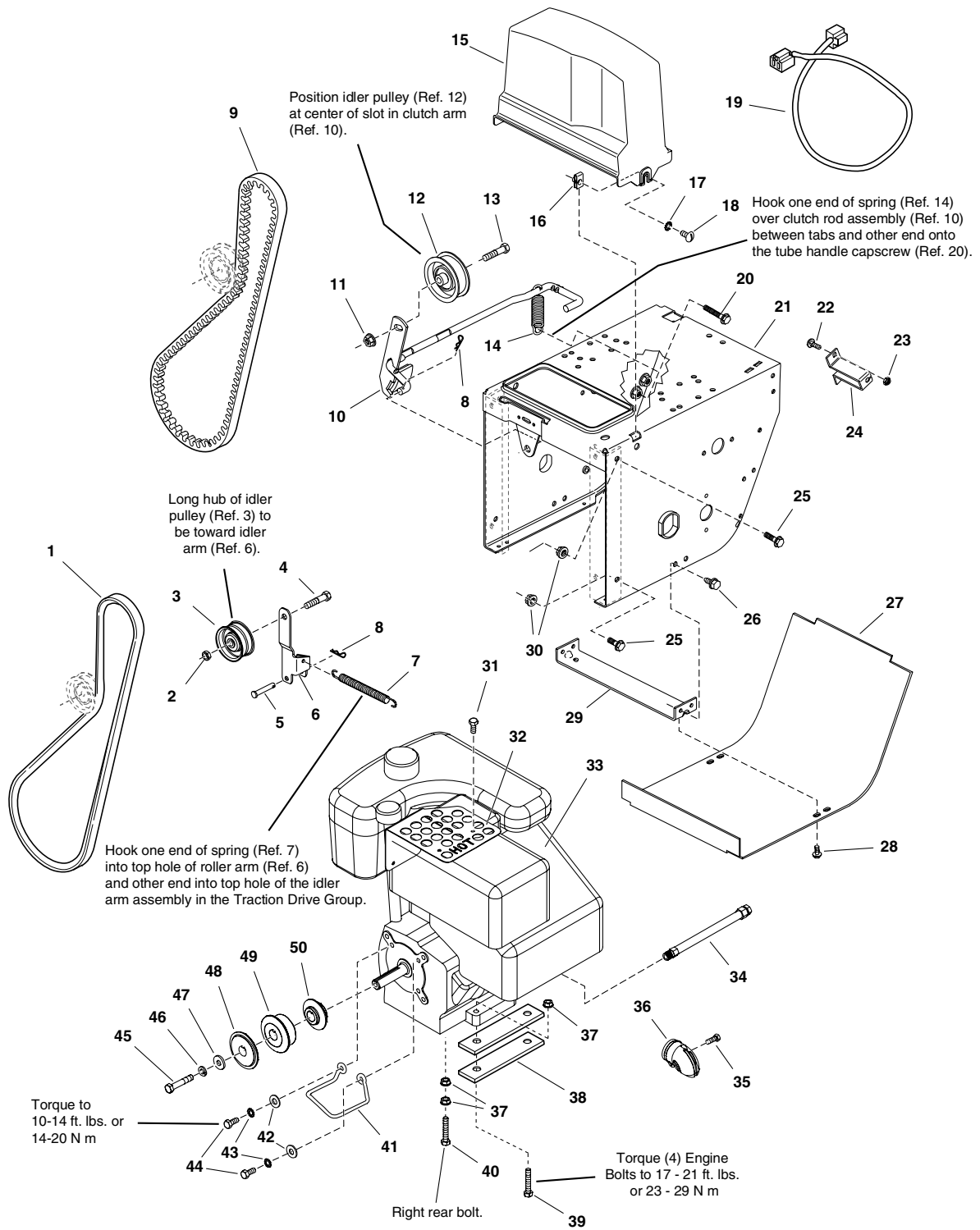
### The above parts group applies to the following Mfg. Nos.:

1694867 - 9560E  
1694914 - 9560EX

# Engine and Frame Group

987035

**NOTE:** Unless noted otherwise,  
use the standard hardware torque  
specification chart.



**The above parts group applies to the following Mfg. Nos.:**

1694867 - 9560E

1694914 - 9560EX

## **Engine and Frame Group**

---

<b>REF NO</b>	<b>PART NO.</b>	<b>QTY.</b>	<b>DESCRIPTION</b>
44	1921515	2	CAPSCREW, Hex Head, 5/16-24 x 3/4 G5
45	1922128	1	CAPSCREW, Hex Head, 3/8-24 x 1-1/2 G8
46	1916965	1	LOCKWASHER, Spring, 3/8
47	1922755	1	WASHER, 3/8
48	1726867	1	PULLEY, Engine Outside, Powdered Metal
49	1726866	1	PULLEY, Engine Middle, Powdered Metal
50	1726865	1	PULLEY, Half Powdered Metal

### **Footnotes**

\* See your local Briggs & Stratton distributor for Parts & Service.

---

### **The above parts group applies to the following Mfg. Nos.:**

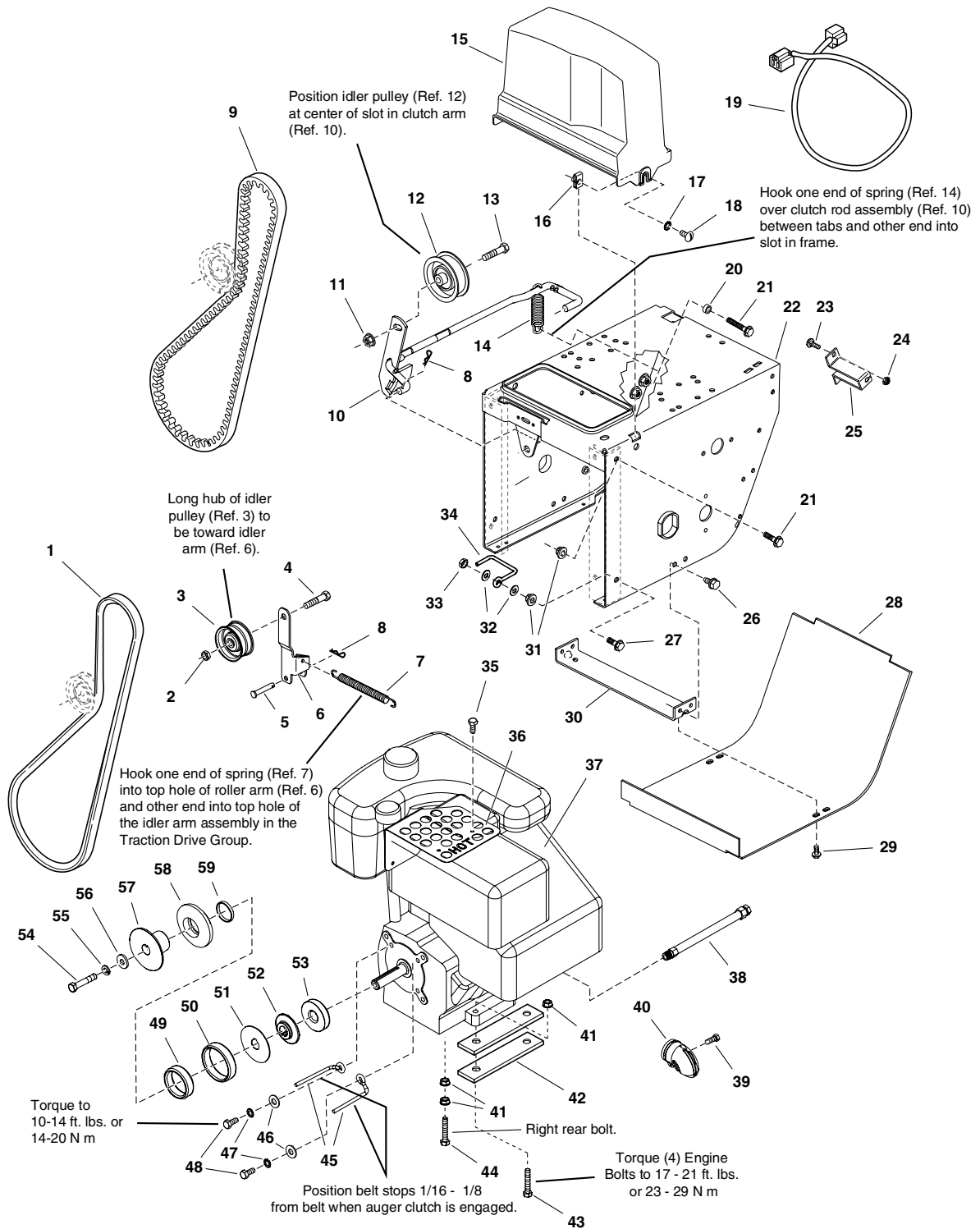
1694867 - 9560E

1694914 - 9560EX

# Engine and Frame Group with Power Boost

987038

**NOTE:** Unless noted otherwise, use the standard hardware torque specification chart.



**The above parts group applies to the following Mfg. Nos.:**

- 1694847 - 10560E
- 1694848 - 10560EX
- 1694849 - 11570E
- 1694850 - E11570
- 1694851 - 1380E
- 1694852 - E1380
- 1694872 - 1390E
- 1694915 - 1390EX



## Engine and Frame Group with Power Boost

REF NO	PART NO.	QTY.	DESCRIPTION
1	1700415	1	V-BELT, 3L
1	1672732	1	V-BELT, 3L (Used Only on 38 in. Models)
2	1928731	1	NUT, Hex, Toplock, Jam, 3/8-16
3	1668477	1	PULLEY, Idler
4	1960647	1	CAPSCREW, Hex Head, 3/8-16 x 1-1/2
5	1665994	1	PIN, Flat Head Drilled
6	1703046A	2	ARM, Idler, 5-3/4 LG
7	1727149	1	SPRING, Extension
8	1722460	1	PIN, Quick
9	1676460	1	V-BELT, HA
9	1666655	1	V-BELT, HA (Used Only on 38 in. Models)
10	1729646A	1	ROD AND ARM ASSEMBLY, Clutch Brake
11	1928352	1	NUT, Hex Flange, 3/8-16 Whiz Lock Large
12	1726348	1	PULLEY, Idler
13	2860709	1	CAPSCREW, Hex Whiz Lock Flange, 3/8-16 x 1-3/4
14	2159106	1	SPRING, Extension
15	1725287	1	COVER, Belt
16	1935255	2	NUT, Speed, 5/16-18, Lug Type
17	2820426	2	LOCKWASHER, External Tooth, 5/16
18	1918249	2	SCREW, Truss head Slotted, 5/16-18 x 3/4
19	1724064	1	CORD, Electric Extension
20	1666697	1	SPACER
21	1930591	4	CAPSCREW, Hex Whiz Lock Flange, 5/16-18 x 3/4
22	1726568C	1	FRAME ASSEMBLY, Chain/Tube Handles
23	1931317	2	CARRIAGE BOLT, 1/4-20 x 3/4 G5
24	1960685	2	NUT, Hex KEPS, 1/4-20, Conical Washer
25	1720404A	1	SUPPORT, Clutch Cable, 16GA
26	1664847	4	CAPSCREW, Hex Washer Head Taptite, 5/16-18 x 3/4
27	1930595	4	CAPSCREW, Hex Whiz, 31/100-18 x 1-1/4
28	1726870C	1	COVER, Bottom Frame, 20GA
29	1925003	2	CAPSCREW, Hex Washer Head Taptite, 1/4-20 x 1/2
30	1727004A	1	SUPPORT, Tie Bar
31	1927557	4	NUT, Hex Flange, 5/16-18, Whiz Lock Large
32	1919326	1	WASHER, Flat, 11/32 x 3/4 x 1/16
33	1923362	1	NUT, Hex Centerlock, 5/16-18
34	1702969	1	BELT STOP
35	1929477	3	CAPSCREW, Hex Washer Head Taptite, #10-24 x 1/2
36	1725664A	1	GUARD, Muffler, 18GA
37	*	1	ENGINE, 10.5HP B&S Electric Start Model: 20E214 Type: 0110E1
37	*	1	ENGINE, 10.5HP B&S Electric Start (CE) Model: 20E214 Type: 0359E1
37	*	1	ENGINE, 11.5HP B&S Electric Start Model: 21C214 Type: 0110E1
37	*	1	ENGINE, 11.5HP B&S Electric Start (CE) Model: 21C216 Type: 0131E1
37	*	1	ENGINE, 13HP B&S Electric Start Model: 21A414 Type: 0112E1
37	*	1	ENGINE, 13HP B&S Electric Start (CE) Model: 21A414 Type: 0215E1

### Footnotes

\* See your local Briggs & Stratton distributor for Parts & Service.

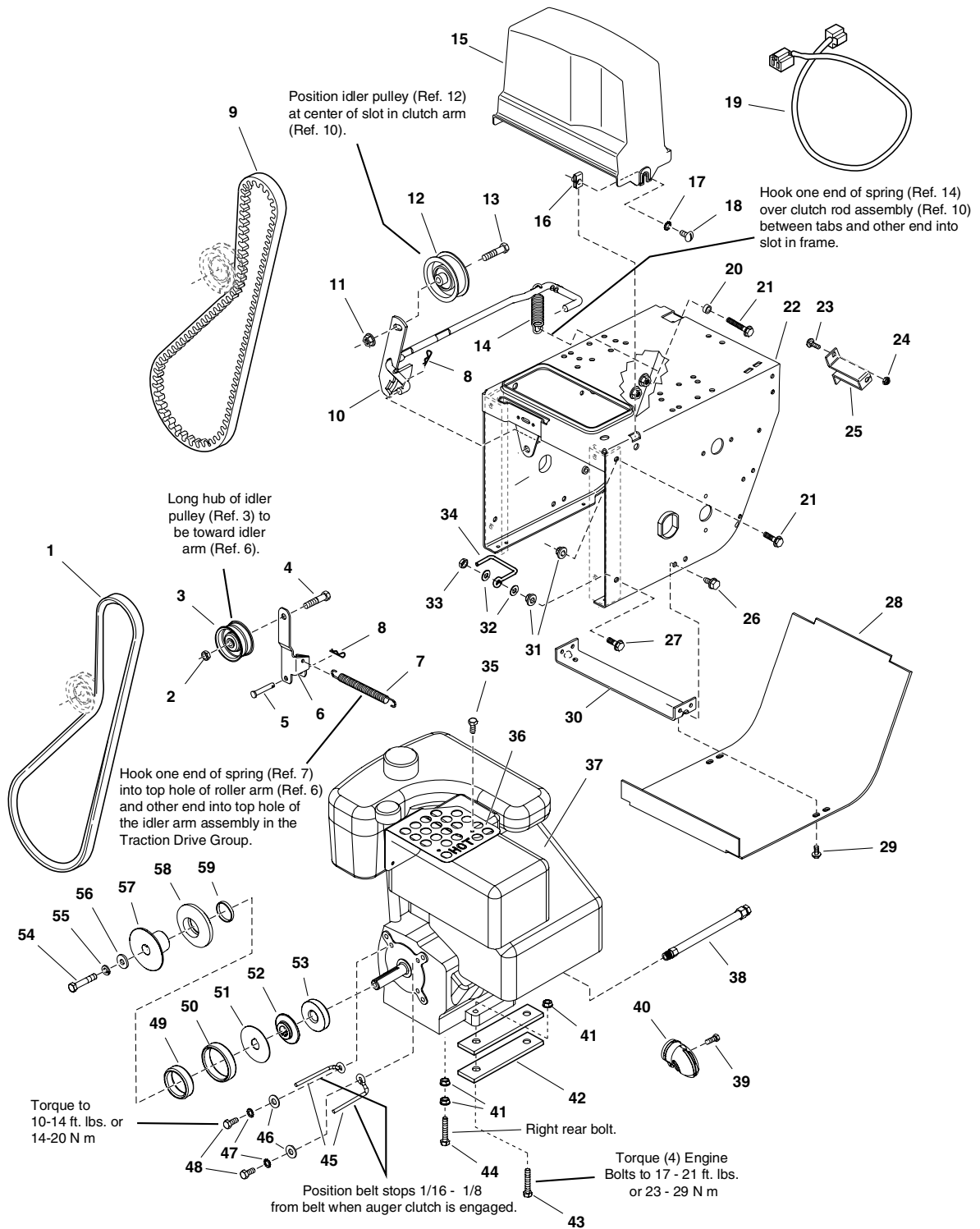
### The above parts group applies to the following Mfg. Nos.:

1694847 - 10560E                      1694872 - 1390E  
 1694848 - 10560EX                    1694915 - 1390EX  
 1694849 - 11570E  
 1694850 - E11570  
 1694851 - 1380E  
 1694852 - E1380

# Engine and Frame Group with Power Boost

987038

**NOTE:** Unless noted otherwise,  
use the standard hardware torque  
specification chart.



**The above parts group applies to the following Mfg. Nos.:**

- |                   |                  |
|-------------------|------------------|
| 1694847 - 10560E  | 1694872 - 1390E  |
| 1694848 - 10560EX | 1694915 - 1390EX |
| 1694849 - 11570E  |                  |
| 1694850 - E11570  |                  |
| 1694851 - 1380E   |                  |
| 1694852 - E1380   |                  |

## Engine and Frame Group with Power Boost

REF NO	PART NO.	QTY.	DESCRIPTION
38	1726942	1	HOSE, Oil Drain, w/Fittings
39	1727033	1	CAPSCREW, Muffler Deflector
40	1727032	1	DEFLECTOR, Rain Guard, B&S Snow Muffler
41	2831277	4	NUT, Hex Flange, 5/16-18, Whiz Lock Small
42	1725326A	4	SUPPORT, Engine Riser (Used on all models Except 38 in. Models)
43	1935159	3	CAPSCREW, Hex Whiz Lock Flange, 5/16-18 x 2-1/4 (Used on all models Except 38 in. Models)
43	1921221	3	CAPSCREW, Hex Head, 5/16-18 x 1-1/2 G5 (Used Only on 38 in. Models)
44	2821719	1	CAPSCREW, Hex Head, 5/16-18 x 2-1/2 G5 (Used on all models Except 38 in. Models)
44	2822127	1	CAPSCREW, Hex Head 5/16-18 x 1-3/4 G5 (Used Only on 38 in. Models)
45	1731178	1	STOP, Belt
46	1919326	2	WASHER, 5/16
47	1917356	2	LOCKWASHER, Spring, 5/16
48	1921515	2	CAPSCREW, Hex Head, 5/16-24 x 3/4 G5
49	1701849	1	SPRING, Compression
50	1702425	1	SPRING, Compression
51	1701818	1	WASHER, Thrust
52	1726869	1	PULLEY HALF, Middle
53	1726868	1	PULLEY HALF, Inside
54	1922128	1	CAPSCREW, Hex Head, 3/8-24 x 1-1/2 G8
55	1916965	1	LOCKWASHER, Spring, 3/8
56	1922755	1	WASHER, 3/8
57	1726864	1	PULLEY HALF, Outside
58	1726863	1	PULLEY HALF, Middle
59	1701825	1	WICK, Felt, Oil

### Footnotes

\* See your local Briggs & Stratton distributor for Parts & Service.

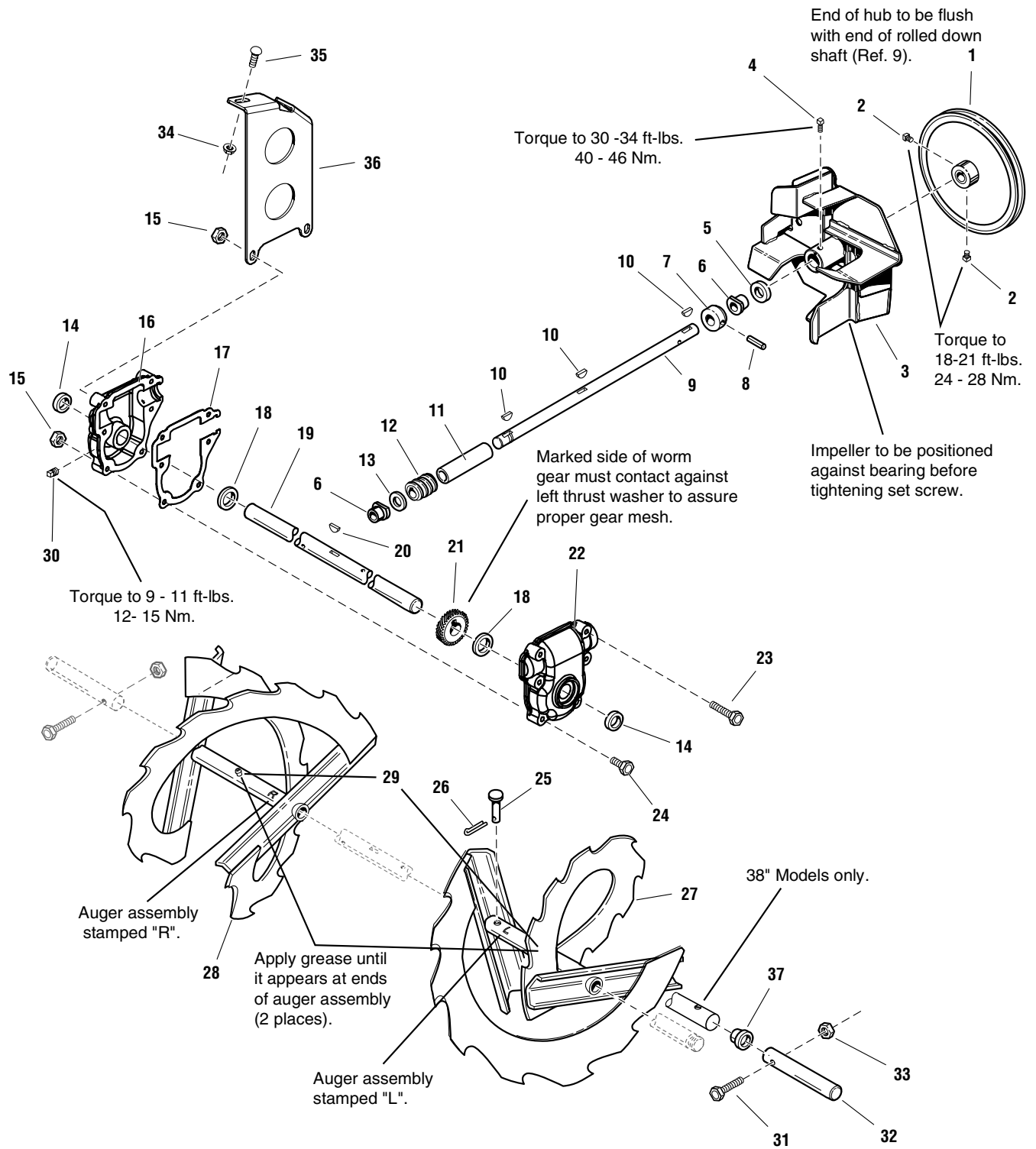
### The above parts group applies to the following Mfg. Nos.:

1694847 - 10560E                      1694872 - 1390E  
 1694848 - 10560EX                    1694915 - 1390EX  
 1694849 - 11570E  
 1694850 - E11570  
 1694851 - 1380E  
 1694852 - E1380

# Auger and Impeller Group

985466R1

**NOTE:** Unless noted otherwise, use the standard hardware torque specification chart.



**The above parts group applies to the following Mfg. Nos.:**

- |                   |                  |
|-------------------|------------------|
| 1694847 - 10560E  | 1694867 - 9560E  |
| 1694848 - 10560EX | 1694872 - 1390E  |
| 1694849 - 11570E  | 1694914 - 9560EX |
| 1694850 - E11570  | 1694915 - 1390EX |
| 1694851 - 1380E   |                  |
| 1694852 - E1380   |                  |

## Auger and Impeller Group

REF NO	PART NO.	QTY.	DESCRIPTION
1	1679293	1	PULLEY, w/Hub
2	1928721	2	SCREW, Set Square Head Cup Point, 5/16-18 x 1/2 G8
3	1612187A	1	IMPELLER ASSEMBLY
4	1960474	1	SCREW, Set Square Head Cup Point, 3/8-16 x 1/2 G8
5	1612093	1	SEAL, Oil 1/4" Thick
6	1612149	2	BUSHING, 377/500 ID x 1-1/10 OD x 1-1/100 LG Powderdered Metal
7	1612127	1	COLLAR, Thrust 3/4 LG
8	2836098	1	PIN, Drive Lock Type A 3/16 x 1-1/2
9	1612129	1	SHAFT, Worm 18-1/10 LG
10	2818312	3	KEY, Woodruff, 47/250 x 5/8
11	1612111	1	TUBE, 9/10 OD 39/50 ID, 7-1/2 LG
12	1612142	1	GEAR, Worm 1-3/8 LG
13	2168111	1	WASHER, Thrust
14	2118118	2	SEAL, Oil, 1/4" Thick
15	1930642	8	NUT, Hex Flange, 1/4-20 Toplock Small (Uses Quantity of 6 on 28 adn 38 in. Models)
16	1612137	1	CASE, Gear R.H.
17	1612124	1	GASKET, Gear Case
18	2118315	2	WASHER, Thrust
19	1731916	1	SHAFT, 16 LG Auger 3 Holes
20	2830246	1	KEY, Woodruff 1/4 x 3/4
21	1612141	1	GEAR, Worm 7/8 LG
22	1612136	1	CASE, Gear L.H.
23	1923282	2	CAPSCREW, Hex Head, 1/4-20 x 2-1/2 G5 (Used on 32 and 38 in. Modles)
24	1960346	8	CAPSCREW, Hex Head, 1/4-20 x 2-1/4 G5 (Uses Quantity of 6 on 28 adn 38 in. Models)
25	1668344	2	PIN, Flat Head Drilled
26	1918447	2	PIN, Cotter 47/50 x 3/4
27	1718782A	1	AUGER ASSEMBLY, L.H. 9-1/2 LG (Used on 24 in. Models)
27	1718784A	1	AUGER ASSEMBLY, L.H. 11-1/2 LG (Used on 28 in. Models)
27	1718786A	1	AUGER ASSEMBLY, L.H. 13-1/2 LG (Used on 32 in. Models)
27	1723945A	1	AUGER ASSEMBLY, L.H. 15-9/10 LG (without Burshing) (Used on 38 in. Models)
27	1731322A	1	AUGER ASSEMBLY, L.H. 15-9/10 LG (Includes Ref. No. 37) (Used on 38 in. Models)
28	1718783A	1	AUGER ASSEMBLY, R.H. 9-1/2 LG (Used on 24 in. Models)
28	1718785A	1	AUGER ASSEMBLY, R.H. 11-1/2 LG (Used on 28 in. Models)
28	1718787A	1	AUGER ASSEMBLY, R.H. 13-1/2 LG (Used on 32 in. Models)
28	1723944A	1	AUGER ASSEMBLY, R.H. 15-9/10 LG (without Bushing) (Used on 38 in. Models)
28	1721321A	1	AUGER ASSEMBLY, R.H. 15-9/10 LG (Includes Ref. No. 37) (Used on 38 in. Models)
29	2821133	2	FITTING, Lube 1/4 Drive, No Check Ball
30	1668971	1	FITTING, Pipe Plug, Square Head
31	1921962	2	CAPSCREW, Hex Head, 1/4-20 x 1-3/4 G5 (Used on 38 in. Models)
32	1723931	2	SHAFT, E-Coat, 5 LG (Used on 38 in. Models)
33	1920397	2	NUT, Hex Lock ESNA Light, 1/4-20NC-3B (Used on 38 in. Models)
34	1931277	2	NUT, Hex Flange, 5/16-18, Whiz Lock Small (Used on 32 and 38 in. Models)
35	1931333	2	CARRIAGE BOLT, 5/16-18 x 3/4 G5 (Used on 32 and 38 in. Models)
36	1723922A	1	SUPPORT, Gear Box 10GA (Used on 38 in. Models)

### Footnotes

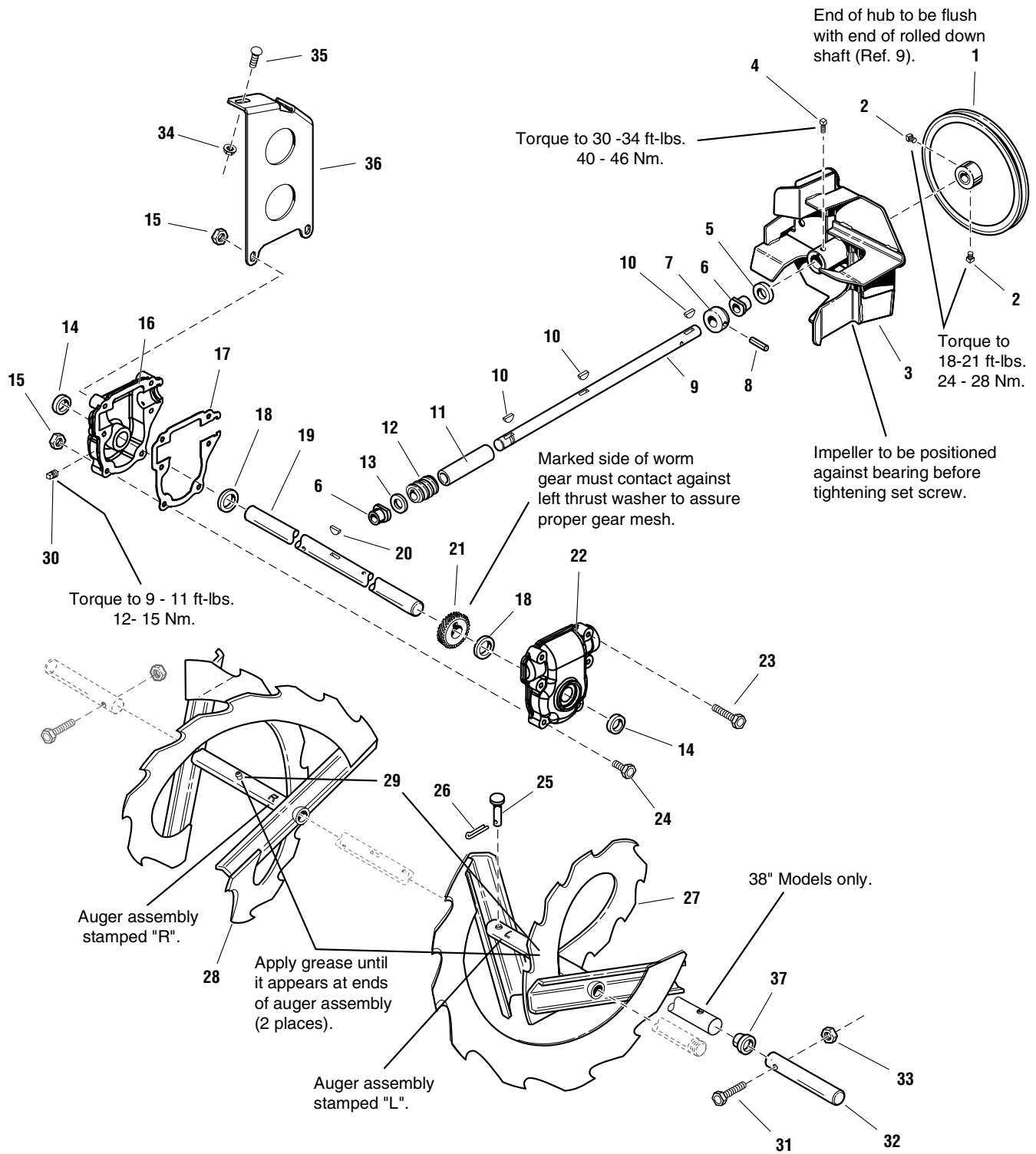
#### The above parts group applies to the following Mfg. Nos.:

1694847 - 10560E	1694867 - 9560E
1694848 - 10560EX	1694872 - 1390E
1694849 - 11570E	1694914 - 9560EX
1694850 - E11570	1694915 - 1390EX
1694851 - 1380E	
1694852 - E1380	

# Auger and Impeller Group

985466R1

**NOTE:** Unless noted otherwise, use the standard hardware torque specification chart.



**The above parts group applies to the following Mfg. Nos.:**

- |                   |                  |
|-------------------|------------------|
| 1694847 - 10560E  | 1694867 - 9560E  |
| 1694848 - 10560EX | 1694872 - 1390E  |
| 1694849 - 11570E  | 1694914 - 9560EX |
| 1694850 - E11570  | 1694915 - 1390EX |
| 1694851 - 1380E   |                  |
| 1694852 - E1380   |                  |

## ***Auger and Impeller Group***

---

<b>REF NO</b>	<b>PART NO.</b>	<b>QTY.</b>	<b>DESCRIPTION</b>
37	1709894	2	BUSHING, Plastic (Used on 38 in. Models)

---

### **Footnotes**

---

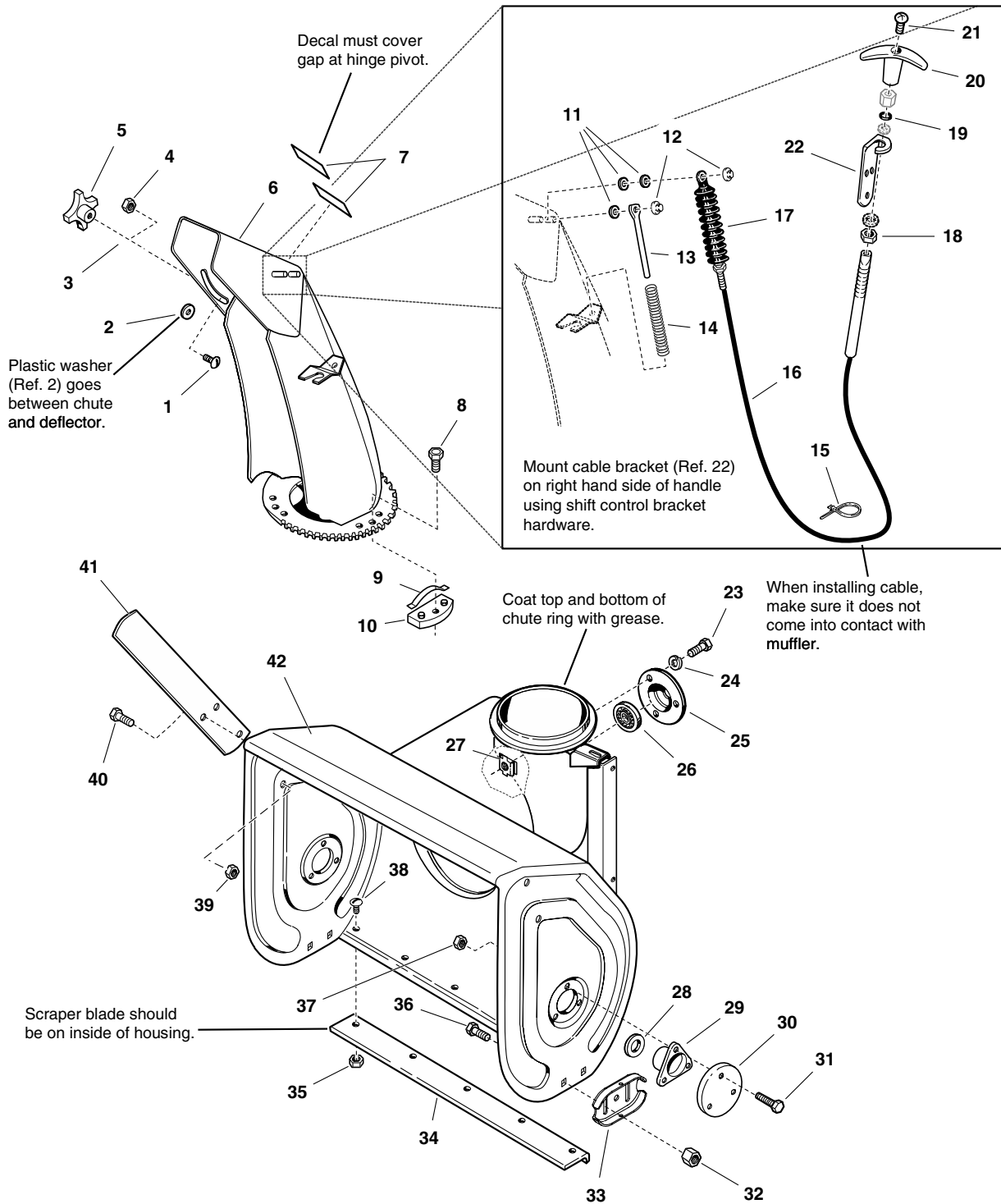
**The above parts group applies to the following Mfg. Nos.:**

1694847 - 10560E	1694867 - 9560E
1694848 - 10560EX	1694872 - 1390E
1694849 - 11570E	1694914 - 9560EX
1694850 - E11570	1694915 - 1390EX
1694851 - 1380E	
1694852 - E1380	

# Auger Housing and Chute Group - 24, 28 & 32 inch

987028

**NOTE:** Unless noted otherwise, use the standard hardware torque specification chart.



**The above parts group applies to the following Mfg. Nos.:**

- |                   |                  |
|-------------------|------------------|
| 1694847 - 10560E  | 1694867 - 9560E  |
| 1694848 - 10560EX | 1694914 - 9560EX |
| 1694849 - 11570E  |                  |
| 1694850 - E11570  |                  |
| 1694851 - 1380E   |                  |
| 1694852 - E1380   |                  |



## Auger Housing and Chute Group - 24, 28 & 32 inch

REF NO	PART NO.	QTY.	DESCRIPTION
1	1931333	1	CARRIAGE BOLT, 5/16-18 x 3/4 G5
2	2860210	1	WASHER, Nylon
4	1960686	1	NUT, Hex Flange ESNA Light, 5/16-18 (Used on all models Except 24 in. Models)
5	1670578	1	KNOB, Internal Thread, 5/16 (Used Only on 24 in. Models)
6	1704161C	1	CHUTE AND DEFLECTOR ASSEMBLY, Manual (Used Only on 24 in. Models)
6	1720671C	1	CHUTE AND DEFLECTOR ASSEMBLY, w/Remote (Used on all models Except 24 in. Models)
7	1706085	2	DECAL, Orange Strip
8	1960001	3	SCREW, Hex Washer Head Pastite, 10-14 x 5/8
9	1667865	3	SPRING, Flat
10	1666613	3	HOLD DOWN, Chute
11	1702219	3	SPACER, 17/64 ID x 3/8 OD
12	1960126	2	NUT, Push 1/4
13	1611945	1	ROD, Spring
14	1611939	1	SPRING, Compression
15	2825094	1	TIE, Self Locking (Used on all models Except 24 in. Models)
16	1720446	1	CABLE AND KNOB ASSEMBLY, Chute (Includes Ref. No. 17, 18, 19, 20 & 21)
17	1611989	1	BOOT, Bellows
18	1719140	1	COLLET
19	1719139	1	SEAL, Rod
20	1719138	1	KNOB
21	1960600	1	SCREW, 8-32
22	1726411A	1	BRACKET, Cable
23	1960738	3	CAPSCREW, Hex Head, 5/16-18 x 5/8 G5
25	1665982A	1	RETAINER, Bearing
26	1729578	1	BEARING, Ball
27	1930659	3	NUT, Retainer Speed, 5/16-18
28	1663189	2	SPACER, Low
29	1665980	1	BEARING, Flange
30	1668639C	2	CAP, Bearing, 3-3/4OD
31	1923325	6	CAPSCREW, Hex Head 5/16-18 x 7/8 G5
32	1960687	6	NUT, Hex Flange 3/8-16 ESNA
33	1727854C	2	SKID SHOE, Reversible
34	1709946A	1	BLADE, Scraper, 24 in.
34	1709947A	1	BLADE, Scraper, 28 in.
34	1709948A	1	BLADE, Scraper, 32 in.
35	1935048	5	NUT, Hex Flange, 5/16-18, Two-Way Lock GA (Quantity 7 Only on 32 in. Models)
36	1960711	4	CARRIAGE BOLT, 3/8-16 x 3/4
37	1931277	6	NUT, Hex Flange, 5/16-18
38	1960699	5	CARRIAGE BOLT, 5/16-18 x 5/8 G5 (Quantity 7 Only on 32 in. Models)
39	1960684	4	NUT, Hex Keps, 5/16-18, Conical Washer (Used on all models Except 24 in. Models)
40	1664847	2	CAPSCREW, Hex Head, 5/16-18 x 3/4 G5 (Used on all models Except 24 in. Models)
41	1729642C	2	CUTTER, Drift, 1/4 in. Thick, 20LG (Used on all models Except 24 in. Models)

### Footnotes

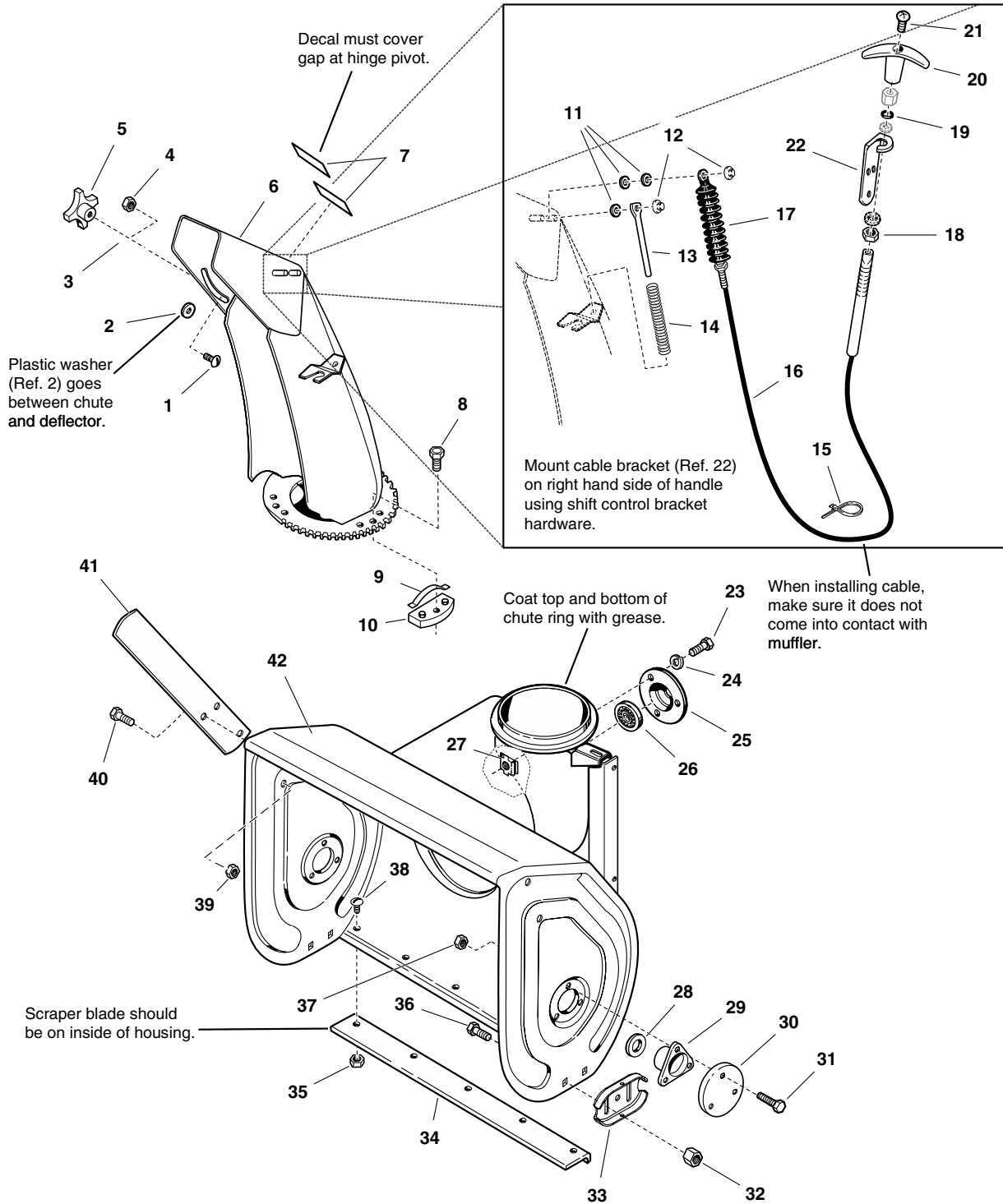
#### The above parts group applies to the following Mfg. Nos.:

1694847 - 10560E                      1694867 - 9560E  
 1694848 - 10560EX                    1694914 - 9560EX  
 1694849 - 11570E  
 1694850 - E11570  
 1694851 - 1380E  
 1694852 - E1380

# Auger Housing and Chute Group - 24, 28 & 32 inch

987028

**NOTE:** Unless noted otherwise, use the standard hardware torque specification chart.



**The above parts group applies to the following Mfg. Nos.:**

- |                   |                  |
|-------------------|------------------|
| 1694847 - 10560E  | 1694867 - 9560E  |
| 1694848 - 10560EX | 1694914 - 9560EX |
| 1694849 - 11570E  |                  |
| 1694850 - E11570  |                  |
| 1694851 - 1380E   |                  |
| 1694852 - E1380   |                  |

## **Auger Housing and Chute Group - 24, 28 & 32 inch**

---

<b>REF NO</b>	<b>PART NO.</b>	<b>QTY.</b>	<b>DESCRIPTION</b>
42	1729724C	1	HOUSING AND IMPELLER ASSEMBLY, 24 in.
42	1729726C	1	HOUSING AND IMPELLER ASSEMBLY, 28 in.
42	1729728C	1	HOUSING AND IMPELLER ASSEMBLY, 32 in.

---

### **Footnotes**

---

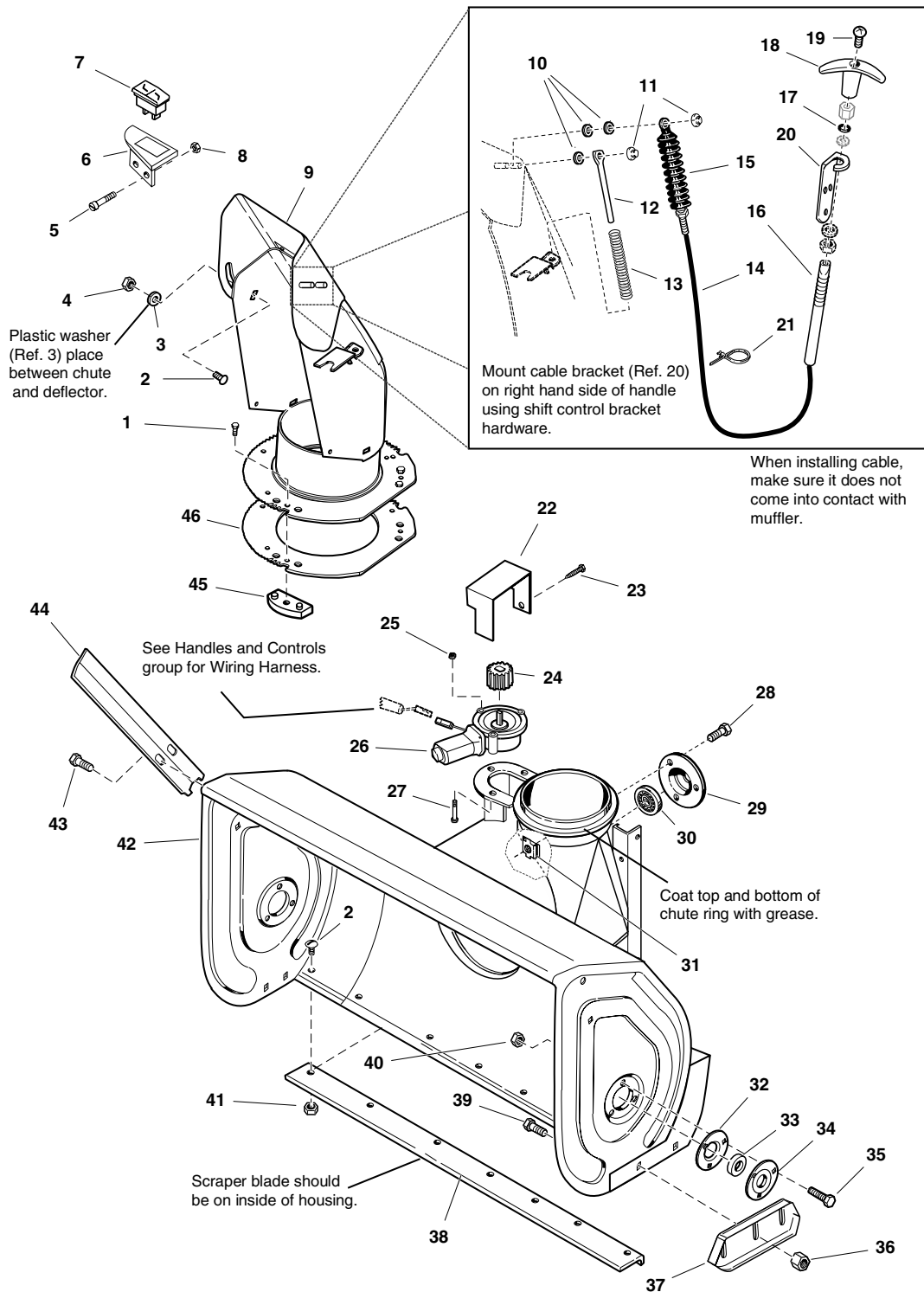
#### **The above parts group applies to the following Mfg. Nos.:**

1694847 - 10560E                      1694867 - 9560E  
1694848 - 10560EX                    1694914 - 9560EX  
1694849 - 11570E  
1694850 - E11570  
1694851 - 1380E  
1694852 - E1380

# Auger Housing and Chute Group - 38" Models

987050

**NOTE:** Unless noted otherwise,  
use the standard hardware torque  
specification chart.



**The above parts group applies to the following Mfg. Nos.:**

1694872 - 1390E

1694915 - 1390EX

## Auger Housing and Chute Group - 38" Models

REF NO	PART NO.	QTY.	DESCRIPTION
1	1960001	3	SCREW, Hex Washer Head Pastite, 10-14 x 5/8
2	1931333	10	CARRIAGE BOLT, 5/16-18 x 3/4 G5
3	2860210	1	WASHER, Special, 97/250ID x 1-3/25OD x 3/100 Thick
4	1960686	1	NUT, Hex Flange ESNA, 5/16-18
5	1923341	1	SCREW, Hex Whiz Lock, 1/4-20 x 3/4
6	1726992A	1	BRACKET, Mounting Switch
7	1724210	1	SWITCH, Rocker Chute
8	1933896	2	NUT, Hex Nylon 10-24
9	1731435C	1	CHUTE AND DEFLECTOR ASSEMBLY
10	1702219	3	SPACER, Heat Treated
11	1960126	2	NUT, Push Pal, 1/4" Diameter Stud Capped
12	1611945	1	ROD, 5/16" Diameter, Spring Guide
13	1611939	1	SPRING, Complete
14	1720446	1	CABLE AND KNOB ASSEMBLY, Chute (Includes Ref. No. 18, 19, 20, 21 & 22)
15	1611989	1	BOOT, Bellows
16	1719140	1	COLLET
17	1719139	1	SEAL, Rod
18	1719138	1	KNOB
19	1960600	1	SCREW, 8-32
20	1726411A	1	SUPPORT, Cable
21	2825094	1	TIE, Self Locking
22	1729645A	1	COVER, Pinion, 18GA
23	1925003	2	CAPSCREW, Hex Washer Head Taptite, 1/4-20 x 1/2
24	1728967	1	PINION, 1-3/20 LG
25	1960745	4	NUT, Hex KEPS, #10-24
26	1728965	1	MOTOR, Electric
27	2860604	3	SCREW, Hex Washer Head Slot, #10-24 x 1-1/4
28	1960738	9	CAPSCREW, Hex Head Whiz Lock, 5/16-18 x 3/4
29	1665982A	1	RETAINER, Bearing
30	1729578	1	BEARING, Ball
31	1930659	3	NUT, Retainer Speed, 5/16-18
32	2172279	2	FLANGE, Bearing, w/Fitting
33	2173934	2	BEARING, Cartridge
34	2172278	2	FLANGE, Bearing, 3/8" Deep
35	1925205	6	CAPSCREW, Hex head, 5/16-18 x 5/8
36	1960687	4	NUT, Hex Flange, 3/8-16 ESNA
37	1725747A	2	SKID SHOE, 7GA Formed, Heat Treated
38	1723921A	1	BLADE, Scraper, 35-3/4 for 38"
39	1960702	4	CARRIAGE BOLT, 3/8-16 x 1 G5
40	1931277	15	NUT, Hex Flange Whiz Lock, 5/16-18
41	1935048	9	NUT, Flange Lock, 5/16-18
42	1729734C	1	HOUSING AND IMPELLER ASSEMBLY, 38"
43	1664847	4	CAPSCREW, Hex Washer Head Taptite, 5/16-18 x 3/4 G5
44	1729642C	2	CUTTER, Drift, Red

### Footnotes

The above parts group applies to the following Mfg. Nos.:

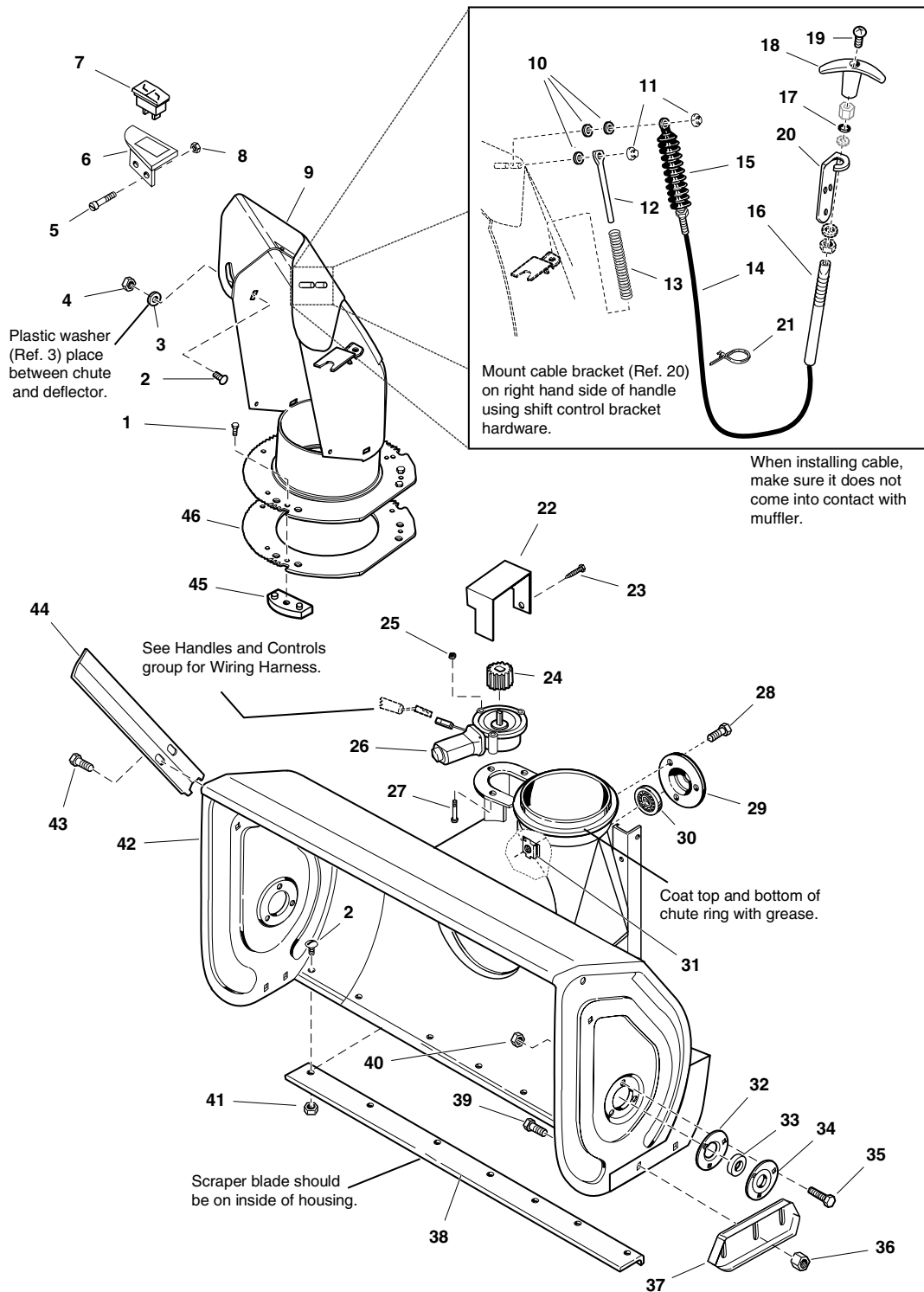
1694872 - 1390E

1694915 - 1390EX

# Auger Housing and Chute Group - 38" Models

987050

**NOTE:** Unless noted otherwise, use the standard hardware torque specification chart.



The above parts group applies to the following Mfg. Nos.:

1694872 - 1390E

1694915 - 1390EX

## **Auger Housing and Chute Group - 38" Models**

---

<b>REF NO</b>	<b>PART NO.</b>	<b>QTY.</b>	<b>DESCRIPTION</b>
45	1666613	3	HOLD DOWN, Chute
46	1717477A	1	GEAR, Chute

---

### **Footnotes**

---

**The above parts group applies to the following Mfg. Nos.:**

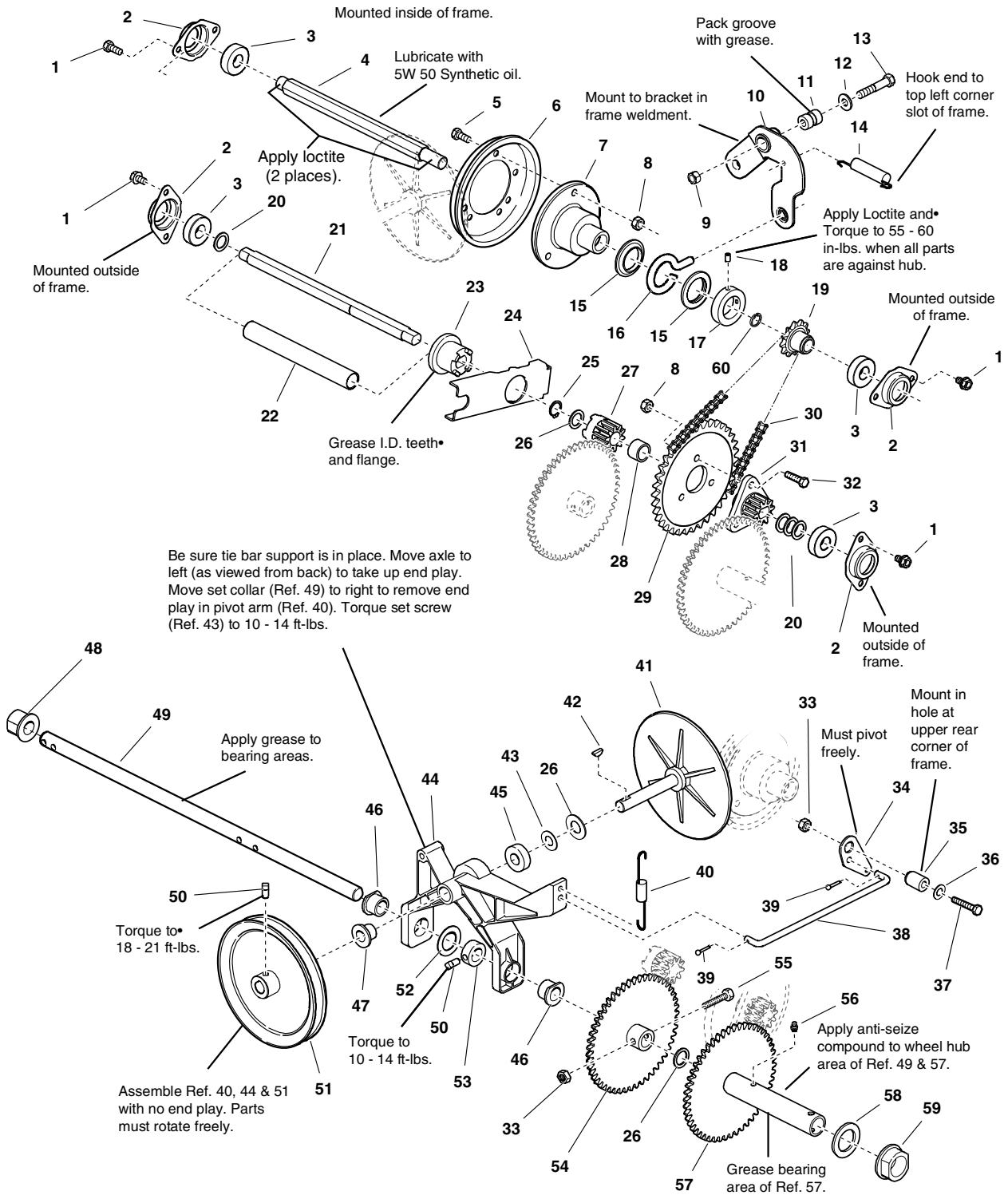
1694872 - 1390E

1694915 - 1390EX

# Traction Drive Group

**NOTE: Unless noted otherwise, use the standard hardware torque specification chart.**

987054



**The above parts group applies to the following Mfg. Nos.:**

- |                   |                  |
|-------------------|------------------|
| 1694847 - 10560E  | 1694867 - 9560E  |
| 1694848 - 10560EX | 1694872 - 1390E  |
| 1694849 - 11570E  | 1694914 - 9560EX |
| 1694850 - E11570  | 1694915 - 1390EX |
| 1694851 - 1380E   |                  |
| 1694852 - E1380   |                  |



## Traction Drive Group

REF NO	PART NO.	QTY.	DESCRIPTION
1	1930601	8	SCREW, Hex Washer Head Taptite, 5/16-18 x 5/8
2	1667341	4	RETAINER, Bearing
3	1722703	4	BEARING, Ball
4	1726856	1	SHAFT, Hex
5	1921332	3	CAPSCREW, Hex Head, 5/16-18 x 3/4 G5
6	1725428	1	DISC, Friction with Insert
7	1665995	1	HUB, Friction Disc
8	1960684	6	NUT, Hex Keps, 5/16-18, Conical Washer
9	1960687	1	NUT, Hex Flange, 3/8-16 ESNA
10	1669256	1	ARM ASSEMBLY, Shift w/Bushing
11	1666114	1	BUSHING, 19/50 ID x 3/4 OD x 1-3/100 LG
12	1924940	1	WASHER, 3/8
13	1923701	1	CAPSCREW, Hex Head, 3/8-16 x 2 G5
14	1668255	1	SPRING, Extension
15	1678956	2	COLLAR, Thrust
16	1666207	1	PIN, Loop
17	1667335	1	COLLAR, Set
18	1724333	2	SCREW, Set Square Head Cup Point, 1/4-20 x 1/2
19	1726931	1	SPROCKET, 10 Tooth
20	2860164	4	WASHER, 5/8
21	1718752	1	JACKSHAFT, Double D
22	1720298	1	SPRING, Complete
23	1718689	1	CLUTCH, Sliding, 1/5LG, Powdered Metal
24	1720078A	1	ARM, Clutch
25	2827732	1	RING, Retaining Extension
26	1960114	3	WASHER, 3/4
27	1718688	1	GEAR, Stationary Clutch
28	1679556	1	SPACER, Heat Treated, 31/100 LG
29	1667330	1	SPROCKET
30	1666980	1	CHAIN, Roller
31	1718687	1	GEAR, Double D
32	1921333	3	CAPSCREW, Hex Head, 5/16-18 x 1 G5
33	1960686	2	NUT, Hex Flange, 5/16-18 ESNA
34	1700473	1	BELLCRANK
35	1666106	1	BUSHING, 11/32 ID x 3/4 OD x 1-3/50 LG
36	1919326	1	WASHER, 11/32 x 3/4 x 1/16
37	1922127	1	CAPSCREW, Hex Head, 5/16-18 x 1-3/4 G5
38	1726467	1	ROD, Pivot, 9-15/100 LG
39	1722460	1	PIN, Quick
40	1725666	1	SPRING, Extension
41	1719879	1	DRIVE DISC with SPINDLE
42	2818312	1	KEY, Woodruff, 47/250 x 5/8
43	1924366	1	WASHER, 5/8
44	1670849	1	ARM, Pivot with Bushings & Bearings (Includes Ref. Nos 45, 46, 47 & 48)

### Footnotes

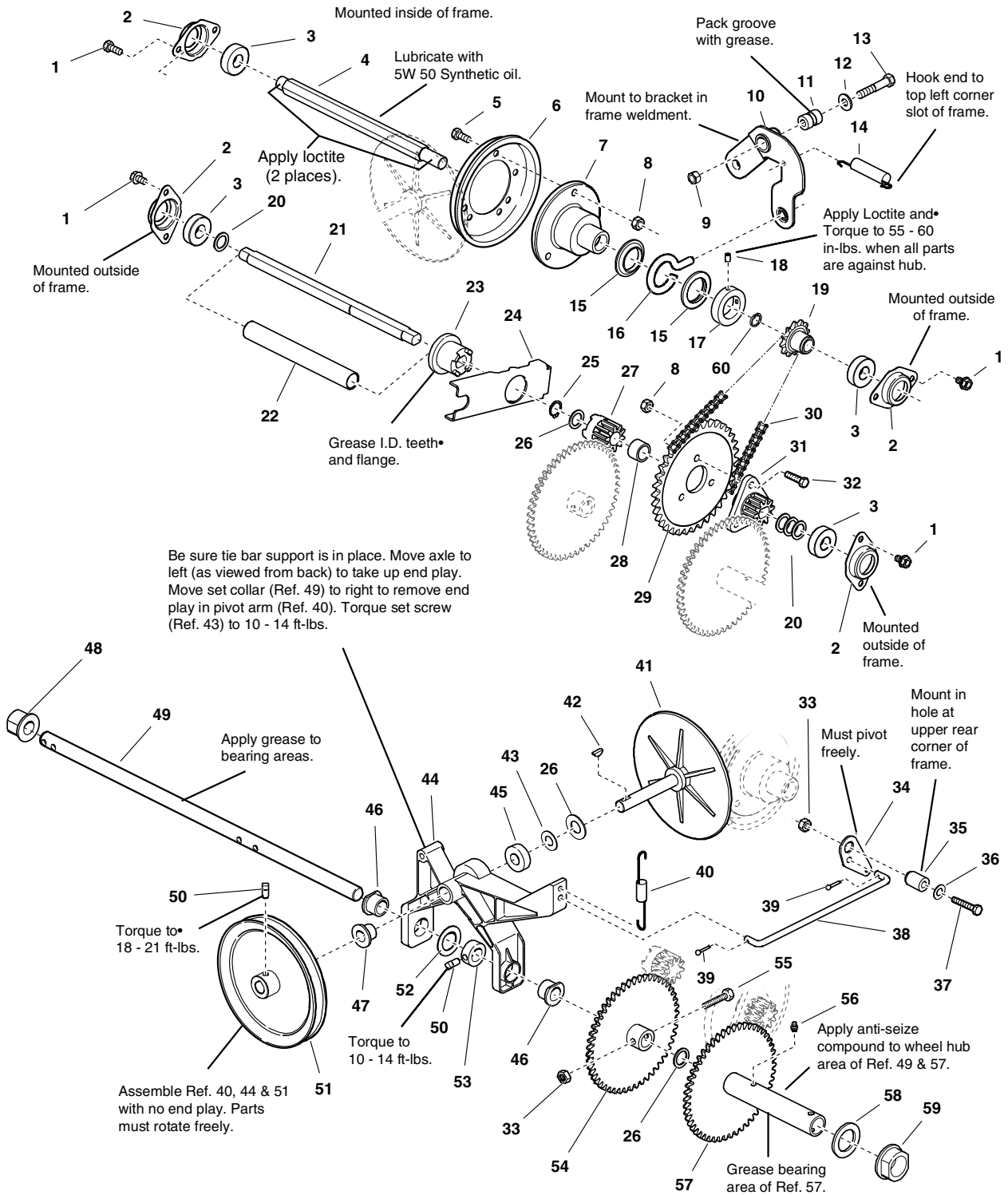
#### The above parts group applies to the following Mfg. Nos.:

1694847 - 10560E	1694867 - 9560E
1694848 - 10560EX	1694872 - 1390E
1694849 - 11570E	1694914 - 9560EX
1694850 - E11570	1694915 - 1390EX
1694851 - 1380E	
1694852 - E1380	

# Traction Drive Group

**NOTE: Unless noted otherwise, use the standard hardware torque specification chart.**

987054



**The above parts group applies to the following Mfg. Nos.:**

- |                   |                  |
|-------------------|------------------|
| 1694847 - 10560E  | 1694867 - 9560E  |
| 1694848 - 10560EX | 1694872 - 1390E  |
| 1694849 - 11570E  | 1694914 - 9560EX |
| 1694850 - E11570  | 1694915 - 1390EX |
| 1694851 - 1380E   |                  |
| 1694852 - E1380   |                  |

## Traction Drive Group

REF NO	PART NO.	QTY.	DESCRIPTION
45	1665521	1	BEARING, Ball
46	1666425	2	BUSHING, 3/4 ID x 1 OD x 3/4 LG, Powder Metal
47	1666855	1	BUSHING, 5/8 ID x 13/16 OD x 3/4 LG, Powder Metal
48	1666001	1	BUSHING, 377/100 ID x 1-13/100 OD x 1 LG, Powdered Metal
49	1720299	1	AXLE, Round
50	1928721	2	SCREW, Set Square Head Cup Point, 5/16-18 x 1/2 G8
51	1672595A	1	PULLEY AND HUB ASSEMBLY
52	1919394	1	WASHER, 1
53	1729254	1	COLLAR, Set
54	1720300	1	GEAR AND HUB ASSEMBLY, RH
55	1930570	1	CAPSCREW, Hex Head, 5/16-18 x 1-1/2 G8
56	2812808	1	FITTING, Lube 1/4-28, Tapered with Check Ball
57	1730228	1	GEAR AND HUB ASSEMBLY, with Bushings
58	2860169	1	WASHER, 1-47/250
59	1720305	1	BUSHING, 1-27/200 ID x 1-157/250 OD x 3/4 LG
60	2172206	1	RING, Retaining External #87

## Footnotes

---

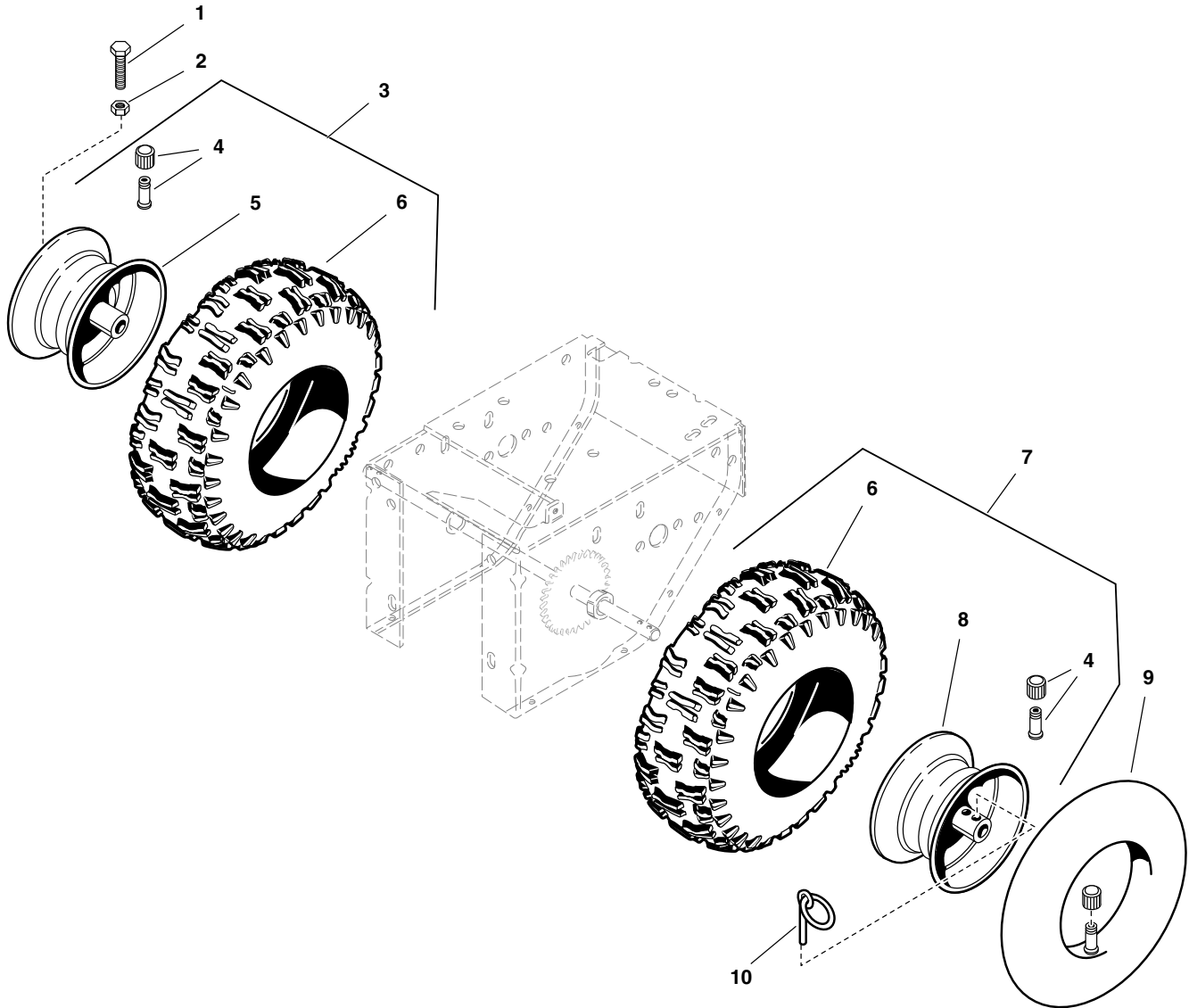
### The above parts group applies to the following Mfg. Nos.:

1694847 - 10560E	1694867 - 9560E
1694848 - 10560EX	1694872 - 1390E
1694849 - 11570E	1694914 - 9560EX
1694850 - E11570	1694915 - 1390EX
1694851 - 1380E	
1694852 - E1380	

## Wheels & Tires Group

NOTE: Unless noted otherwise,  
use the standard hardware torque  
specification chart.

986549



The above parts group applies to the following Mfg. Nos.:

1694847 - 10560E	1694867 - 9560E
1694848 - 10560EX	1694872 - 1390E
1694849 - 11570E	1694914 - 9560EX
1694850 - E11570	1694915 - 1390EX
1694851 - 1380E	
1694852 - E1380	

## **Wheels & Tires Group**

<b>REF NO</b>	<b>PART NO.</b>	<b>QTY.</b>	<b>DESCRIPTION</b>
1	1921978	1	CAPSCREW, Hex Head 5/16-18 x 2 G5
2	1919438	1	NUT, Hex Lock ESNA Light 5/16-18 NC-3B
3	1726743	1	WHEEL & TIRE ASSEMBLY, Snow R.H. (Used on 24 & 28 in. Models)
3	1726745	1	WHEEL & TIRE ASSEMBLY, Snow R.H. (Used on 32 & 38 in. Models)
4	2172353	2	VALVE STEM & CAP ASSEMBLY, Air
5	1714242	1	HUB, Wheel R.H., 3-3/4 Wide 8 Diameter 3/4 ID (Used on 24 & 28 in. Models)
5	1722762	1	HUB, Wheel, 5-3/8 Wide 8 Diameter 3/4 ID (Used on 32 & 38 in. Models)
6	1727074	2	TIRE, 4.80/4.00-8, X-TRAC TL (Used on 24 & 28 in. Models)
6	1727075	2	TIRE, 16 x 6.5-8 X-TRAC TL (Used on 32 & 38 in. Models)
7	1726742	1	WHEEL & TIRE ASSEMBLY, Snow L.H. (Used on 24 & 28 in. Models)
7	1726744	1	WHEEL & TIRE ASSEMBLY, Snow L.H. (Used on 32 & 38 in. Models)
8	1720307	1	HUB, Wheel L.H., 3-3/4 Wide 8 Diameter 1-1/8 ID (Used on 24 & 28 in. Models)
8	1722761	1	HUB, Wheel 5-3/8 Wide 8 Diameter 1-1/8 ID (Used on 32 & 38 in. Models)
9	2153038	2	TUBE, Tire
10	1666969	1	PIN, KLIK, Ring

### **Footnotes**

---

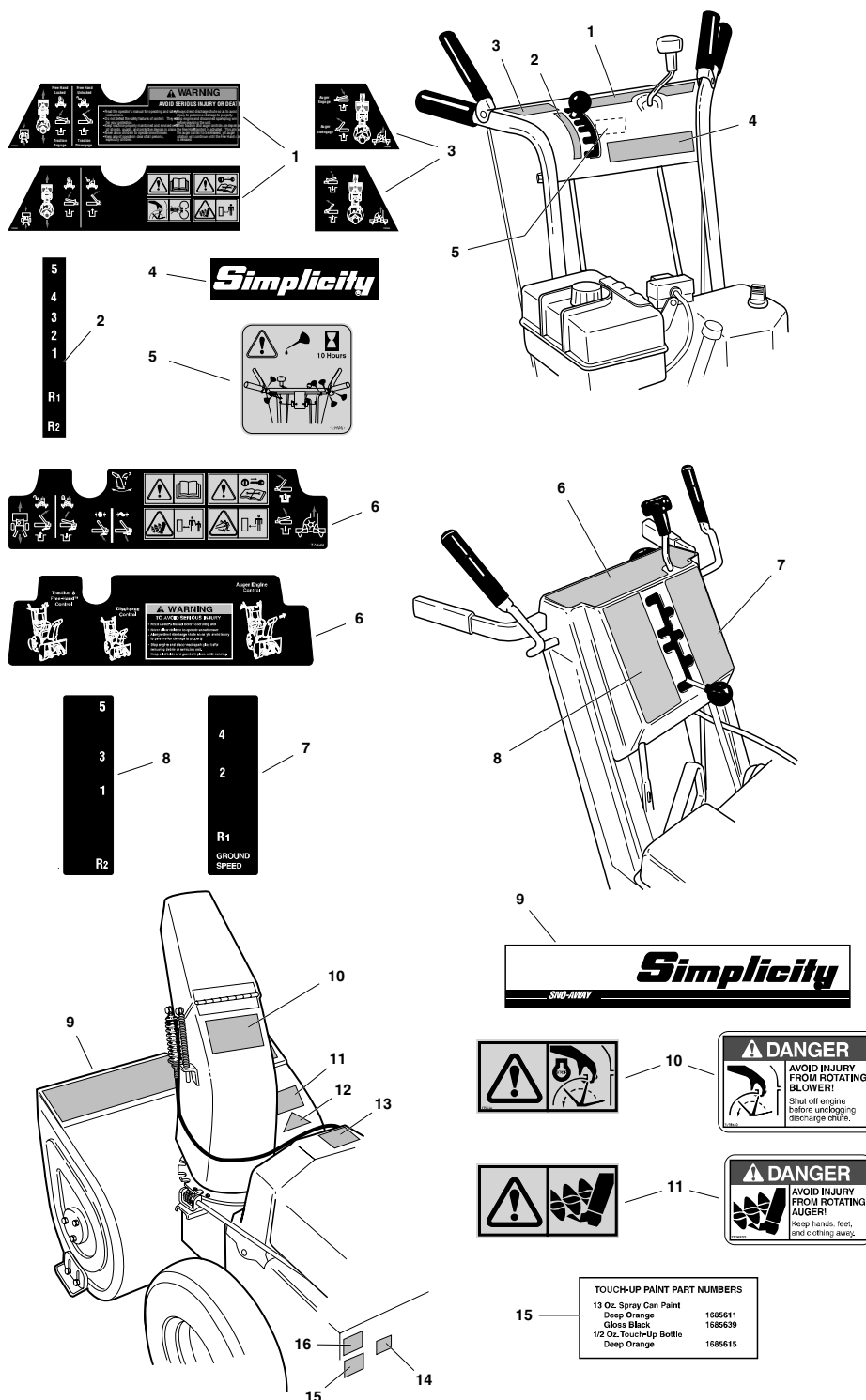
#### **The above parts group applies to the following Mfg. Nos.:**

1694847 - 10560E	1694867 - 9560E
1694848 - 10560EX	1694872 - 1390E
1694849 - 11570E	1694914 - 9560EX
1694850 - E11570	1694915 - 1390EX
1694851 - 1380E	
1694852 - E1380	

## Decal Group

987131

**NOTE:** Unless noted otherwise, use the standard hardware torque specification chart.



The above parts group applies to the following Mfg. Nos.:

1694847 - 10560E	1694867 - 9560E
1694848 - 10560EX	1694872 - 1390E
1694849 - 11570E	1694914 - 9560EX
1694850 - E11570	1694915 - 1390EX
1694851 - 1380E	
1694852 - E1380	

## Decal Group

REF NO	PART NO.	QTY.	DESCRIPTION
1	1726945	1	DECAL, Dashboard EZ Turn L.H. (Tube Handle Models Only)
1	1727022	1	DECAL, Dashboard EZ Turn L.H. (CE)
2	1715557	1	DECAL, 5 4 3 2 1 R1 R2, Shift Pattern (Tube Handle Models Only)
3	1726946	1	DECAL, Auger Control R.H. (Tube Handle Models Only)
3	1727023	1	DECAL, Auger Control R.H. (CE)
4	1715558	1	DECAL, Simplicity (Tube Handle Models Only)
5	1722867	1	DECAL, Handle Lubrication (Tube Handle Models Only)
6	1726947	1	DECAL, Dashboard EZ Turn (Channel Handles)
6	1727024	1	DECAL, Dashboard EZ Turn (Channel Handles) (CE)
7	1714245	1	DECAL, 4 2 R1 Ground Speed, R.H. (Channel Handle Models Only)
8	1714246	1	DECAL, 5 3 1 R2, Shift Pattern, L.H. (Channel Handle Models Only)
9	1727019	1	DECAL, Stripe, 9560
9	1731195	1	DECAL, Stripe, 10560
9	1731196	1	DECAL, Stripe, 11570
9	1731197	1	DECAL, Stripe, 1380
9	1724075	1	DECAL, Stripe, 1390
10	7071880	1	DECAL, DANGER Chute Cleaning
10	1727207	1	DECAL, WARNING Chute Cleaning (CE)
11	1716532	1	DECAL, DANGER Avoid Injury from Auger
11	1727208	1	DECAL, WARNING Impeller (CE)
12	*	1	DECAL, OPEI Certified
13	1725507	1	DECAL, Power Boost (Channel Handle Models Only)
14	*	1	DECAL, Patent
14	*	2	LABEL, Decibel, Power MASS (CE)
15	1720454	1	DECAL, Touch Up Paint, Orange
16	*	1	DECAL, Serial I.D. Tag

### Footnotes

\* Not a serviceable part.

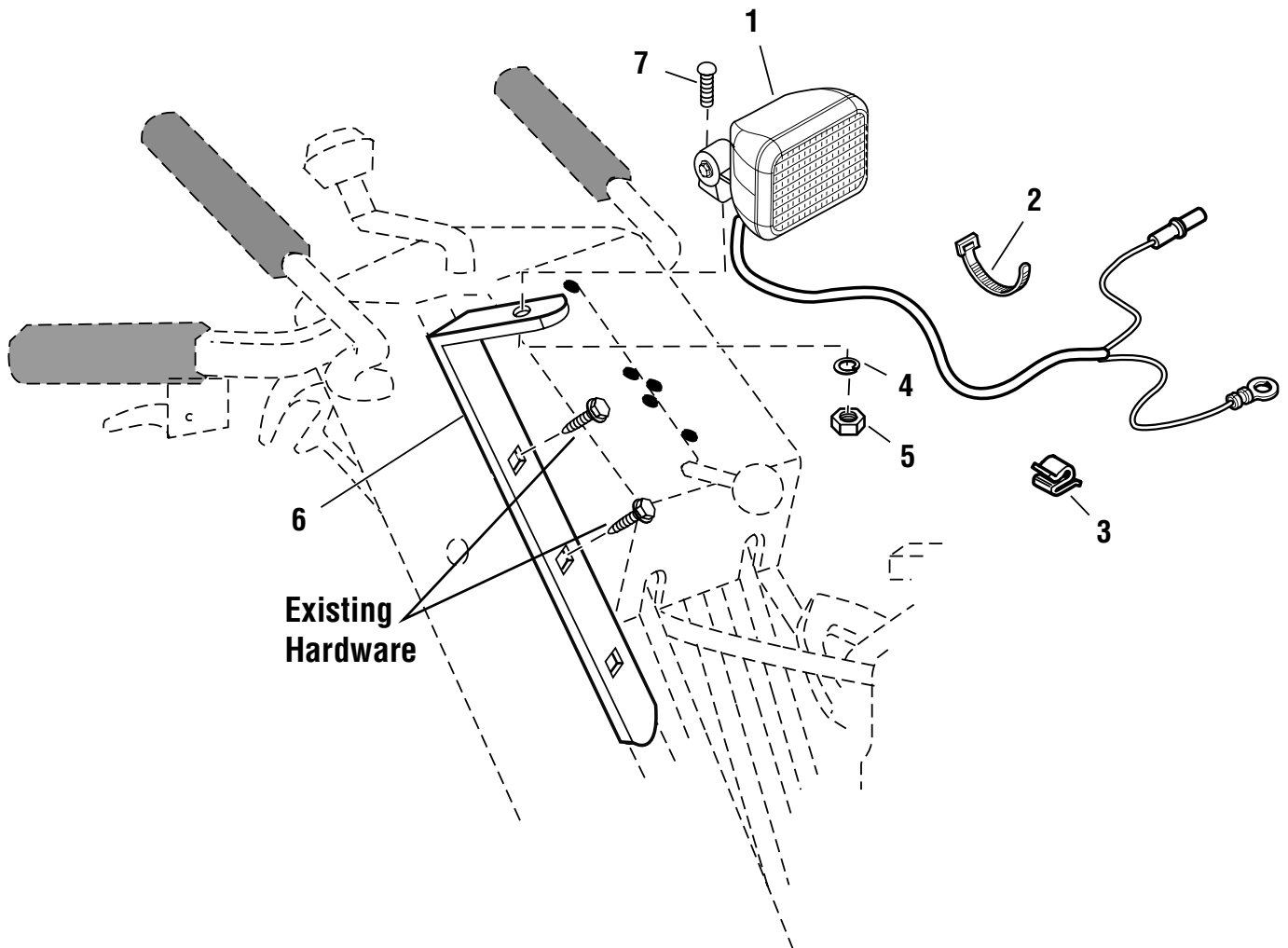
### The above parts group applies to the following Mfg. Nos.:

1694847 - 10560E	1694867 - 9560E
1694848 - 10560EX	1694872 - 1390E
1694849 - 11570E	1694914 - 9560EX
1694850 - E11570	1694915 - 1390EX
1694851 - 1380E	
1694852 - E1380	

## Headlight Group

986371

**NOTE:** Unless noted otherwise,  
use the standard hardware torque  
specification chart.



**The above parts group applies to the following Mfg. Nos.:**

1694847 - 10560E	1694872 - 1390E
1694848 - 10560EX	1694915 - 1390EX
1694849 - 11570E	
1694850 - E11570	
1694851 - 1380E	
1694852 - E1380	



## Headlight Group

---

REF NO	PART NO.	QTY.	DESCRIPTION
1	1725291	1	HEADLIGHT ASEMBLY
2	1701011	2	TIE, Self Locking
3	2834683	1	CLIP, Wire
4	1709256A	1	LOCKWSHER, 5/16
5	1917372	1	NUT, Hex, 5/16-18
6	1725292C	1	BRACKET
7	1931333	1	CARRIAGE BOLT, 5/16-18 x 3/4

## Footnotes

---

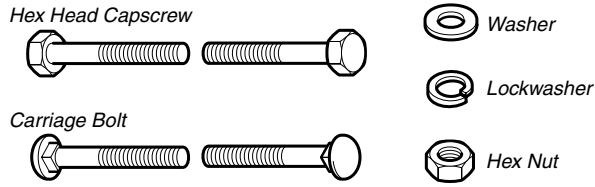
### The above parts group applies to the following Mfg. Nos.:

1694847 - 10560E                      1694872 - 1390E  
1694848 - 10560EX                    1694915 - 1390EX  
1694849 - 11570E  
1694850 - E11570  
1694851 - 1380E  
1694852 - E1380



# Hardware Identification & Torque Specifications

## Common Hardware Types

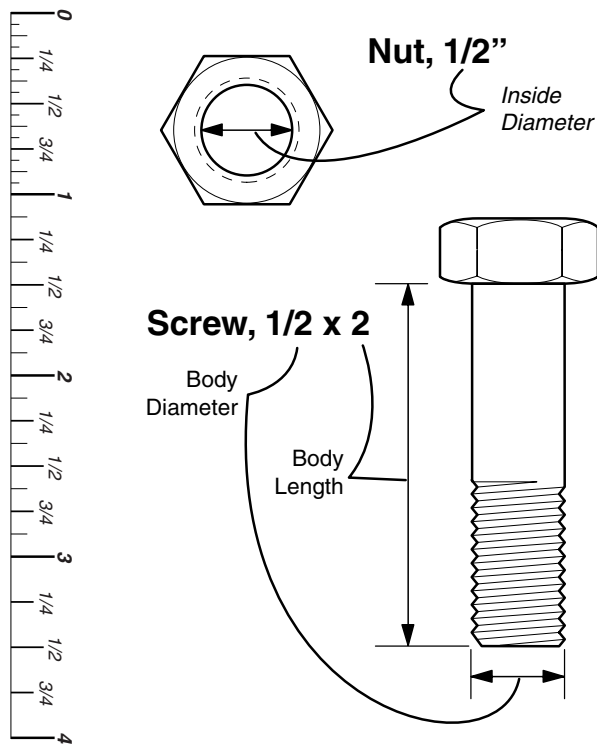


## Standard Hardware Sizing

When a washer or nut is identified as 1/2", this is the *Nominal size*, meaning the *inside diameter* is 1/2 inch; if a second number is present it represents the *threads per inch*

When bolt or capscrew is identified as 1/2 - 16 x 2", this means the *Nominal size*, or *body diameter* is 1/2 inch; the second number represents the *threads per inch* (16 in this example, and the final number is the *body length* of the bolt or screw (in this example 2 inches long).

**The guides and ruler furnished below are designed to help you select the appropriate hardware and tools.**



## Torque Specification Chart

FOR STANDARD MACHINE HARDWARE (Tolerance ± 20%)

Hardware Grade	No Marks SAE Grade 2		SAE Grade 5		SAE Grade 8	
	in/lbs ft/lbs	Nm.	in/lbs ft/lbs	Nm.	in/lbs ft/lbs	Nm.
8-32	19	2.1	30	3.4	41	4.6
8-36	20	2.3	31	3.5	43	4.9
10-24	27	3.1	43	4.9	60	6.8
10-32	31	3.5	49	5.5	68	7.7
1/4-20	66	7.6	8	10.9	12	16.3
1/4-28	76	8.6	10	13.6	14	19.0
5/16-18	11	15.0	17	23.1	25	34.0
5/16-24	12	16.3	19	25.8	27	34.0
3/8-16	20	27.2	30	40.8	45	61.2
3/8-24	23	31.3	35	47.6	50	68.0
7/16-14	30	40.8	50	68.0	70	95.2
7/16-20	35	47.6	55	74.8	80	108.8
1/2-13	50	68.0	75	102.0	110	149.6
1/2-20	55	74.8	90	122.4	120	163.2
9/16-12	65	88.4	110	149.6	150	204.0
9/16-18	75	102.0	120	163.2	170	231.2
5/8-11	90	122.4	150	204.0	220	299.2
5/8-18	100	136	180	244.8	240	326.4
3/4-10	160	217.6	260	353.6	386	525.0
3/4-16	180	244.8	300	408.0	420	571.2
7/8-9	140	190.4	400	544.0	600	816.0
7/8-14	155	210.8	440	598.4	660	897.6
1-8	220	299.2	580	788.8	900	1,244.0
1-12	240	326.4	640	870.4	1,000	1,360.0

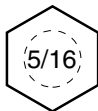
### NOTES

- These torque values are to be used for all hardware excluding: locknuts, self-tapping screws, thread forming screws, sheet metal screws and socket head setscrews.
- Recommended seating torque values for locknuts:
  - for prevailing torque locknuts - use 65% of grade 5 torques.
  - for flange whizlock nuts and screws - use 135% of grade 5 torques.
- Unless otherwise noted on assembly drawings, all torque values must meet this specification.

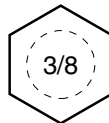
## Wrench & Fastener Size Guide



1/4" Bolt or Nut  
Wrench—7/16"



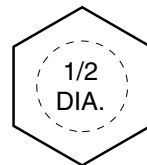
5/16" Bolt or Nut  
Wrench—1/2"



3/8" Bolt or Nut  
Wrench—9/16"



7/16" Bolt or Nut  
Wrench (Bolt)—5/8"  
Wrench (Nut)—11/16"



1/2" Bolt or Nut  
Wrench—3/4"

***Simplicity***

---

MANUFACTURING, INC.  
500 N. Spring Street / PO Box 997  
Port Washington, WI 53074-0997 USA

[www.simplicitymfg.com](http://www.simplicitymfg.com)

© Copyright 2005 Simplicity Manufacturing, Inc.  
All Rights Reserved. Printed In USA.

