



Parts Manual



Lancer / 4400

Series Riding Mower & Mower Decks

15HP Product

Mfg. No.	Description
1694106	Lancer, 15HP Hydro (CE/Export)
1694255	4416, 15HP Hydro (CE/Export)

1694110	44" Mower Deck (CE/Export)
1694258	44" Mower Deck (CE/Export)
1694291	44" Mower Deck
1694293	44" Mower Deck

17HP Product

Mfg. No.	Description
1694292	Lancer, 17HP Hydro
1694294	4417, 17HP Hydro
1694317	Lancer, 17HP Hydro (CE/Export)
1694319	4416, 17HP Hydro (CE/Export)
1694320	4417, 17HP Hydro (CE/Export)
1694348	4416, 17HP Hydro
2690020	Lancer, 17HP Hydro and 44" Mower Deck
2690021	4417, 17HP Hydro and 44" Mower Deck
2690023	4416, 17HP Hydro and 40" Mower Deck
2690050	Lancer, 17HP Hydro and 44" Mower Deck
2690051	4417, 17HP Hydro and 44" Mower Deck

Mower Decks

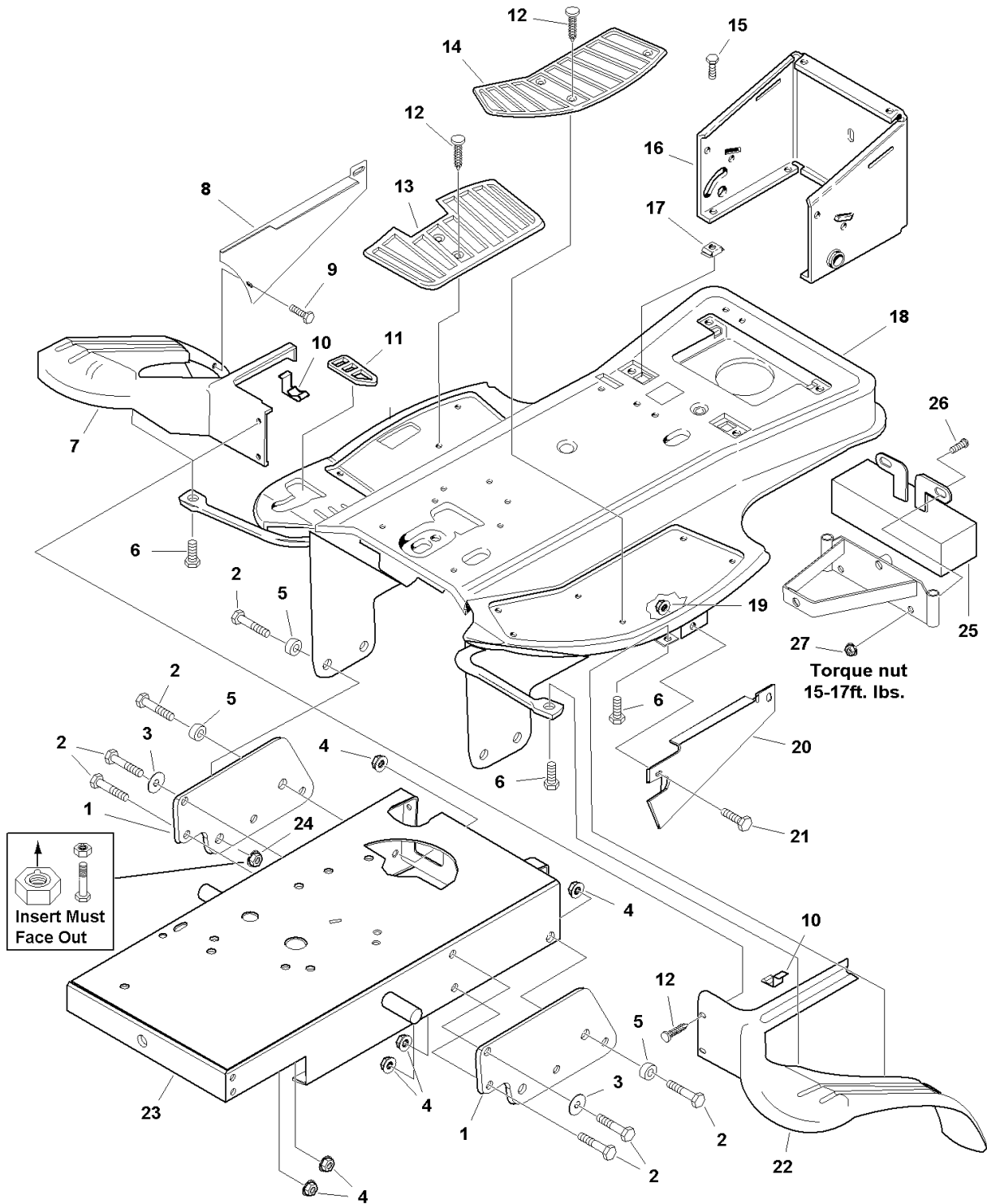
Mfg. No.	Description
1694109	40" Mower Deck (CE/Export)
1694257	40" Mower Deck (CE/Export)
1694297	40" Mower Deck
1694298	40" Mower Deck
1694344	40" Mower Deck (CE/Export)
1694345	40" Mower Deck (CE/Export)

PRODUCT COMPONENTS	PAGES
Frame Group	4
Steering Group	6
Engine & Electric Clutch - 15HP & 17HP Briggs & Stratton	10
Transmission Group	12
Transmission SERVICE PARTS - Tuff Torq K-46Q	14
Controls Group	18
Electrical Group	20
Seat Deck & Fuel Tank Group	22
Lift Group	24
Wheels & Tires Group	26
Decals - Brand & Model	28
Decals - Safety & Common	30
1694363 - Weight, Wheel	32
Mower Frame Group - with Height Adjustment	34
Mower Frame Group - without Height Adjustment	36
40" Mower Deck - Belt, Idler Arm & Hitch	38
40" Mower Deck - Belt, Idler Arm & Hitch	40
40" Mower Deck - Height Adjustment & Roller Bar	42
40" Mower Deck - Height Adjustment & Roller Bar (Later)	46
40" Mower Deck - Housing, Arbors & Blades	48
40" Mower Deck - Housing, Arbors & Blades	50
44" Mower Deck - Belt, Idler Arm & Hitch	54
44" Mower Deck - Height Adjustment & Roller Bar	56
44" Mower Deck - Height Adjustment & Roller Bar (Later)	58
44" Mower Deck - Housing, Arbors & Blades	60
Torque Specification Chart	Inside Back Cover

Frame Group

985955

NOTE: Unless noted otherwise, use the standard hardware torque specification chart.



The above parts group applies to the following Mfg. Nos.:

- | | | |
|------------------|------------------|----------------|
| 1694106 - Lancer | 1694320 - 4417 | 2690051 - 4417 |
| 1694255 - 4416 | 1694348 - 4416 | |
| 1694292 - Lancer | 2690020 - Lancer | |
| 1694294 - 4417 | 2690021 - 4417 | |
| 1694317 - Lancer | 2690023 - 4416 | |
| 1694319 - 4416 | 2690050 - Lancer | |

Frame Group

REF NO	PART NO.	QTY.	DESCRIPTION
1	1722359ASM	2	PLATE, Pivot
2	1920415SM	8	CAPSCREW, Hex Head, 3/8-16 x 1-1/4, Black
3	1960071SM	2	WASHER, 3/8, Black
4	1928352SM	6	NUT, Hex Flange Lock, Black
5	2154177SM	4	SPACER
6	1931648SM	6	CAPSCREW, Hex Head, Flange Lock, 5/16-18 x 1/2, Black
7	1723144SM	1	SHROUD, Wheel, RH
8	1723290ASM	1	SKIRT, Side, RH
9	1960001SM	2	CAPSCREW, Hex Washer Head, Plastite, # 10-14 x 5/8, Black
10	1723691SM	2	CLIP, Shroud
11	1715015SM	1	PLUG, Hole
12	1704351SM	14	FASTENER, Panel
13	1714418SM	1	PAD, Footrest, RH
14	1714417SM	1	PAD, Footrest, LH
15	1930591SM	4	CAPSCREW, Hex Head Whiz Lock, 5/16-18 x 3/4, Black
16	1722453ASM	1	WRAPPER, Rear Frame
17	1935255SM	4	NUT, Speed, Lug, 5/16-18
18	1722514ASM	1	FRAME ASSEMBLY, Rear
19	1960294SM	1	NUT, Hex, Flange, 1/4-20, Black
20	1723289ASM	1	SKIRT, Side, LH
21	1924009SM	1	CAPSCREW, Hex Head, 1/4-20 x 7/8, Black
22	1723145SM	1	SHROUD, Wheel, LH
23	1722494ASM	1	FRAME ASEMBLY, Transmission
24	2860681SM	2	NUT, Hex Lock Aluminum Insert, 3/8-16
25	1723873ASM	1	WEIGHT & TAB ASSEMBLY, 75 lbs.
26	1931335SM	2	CARRIAGE BOLT, 5/16-18 x 1
27	1927557SM	2	NUT, Hex, Flange Whiz Lock, 5/16-18

Footnotes

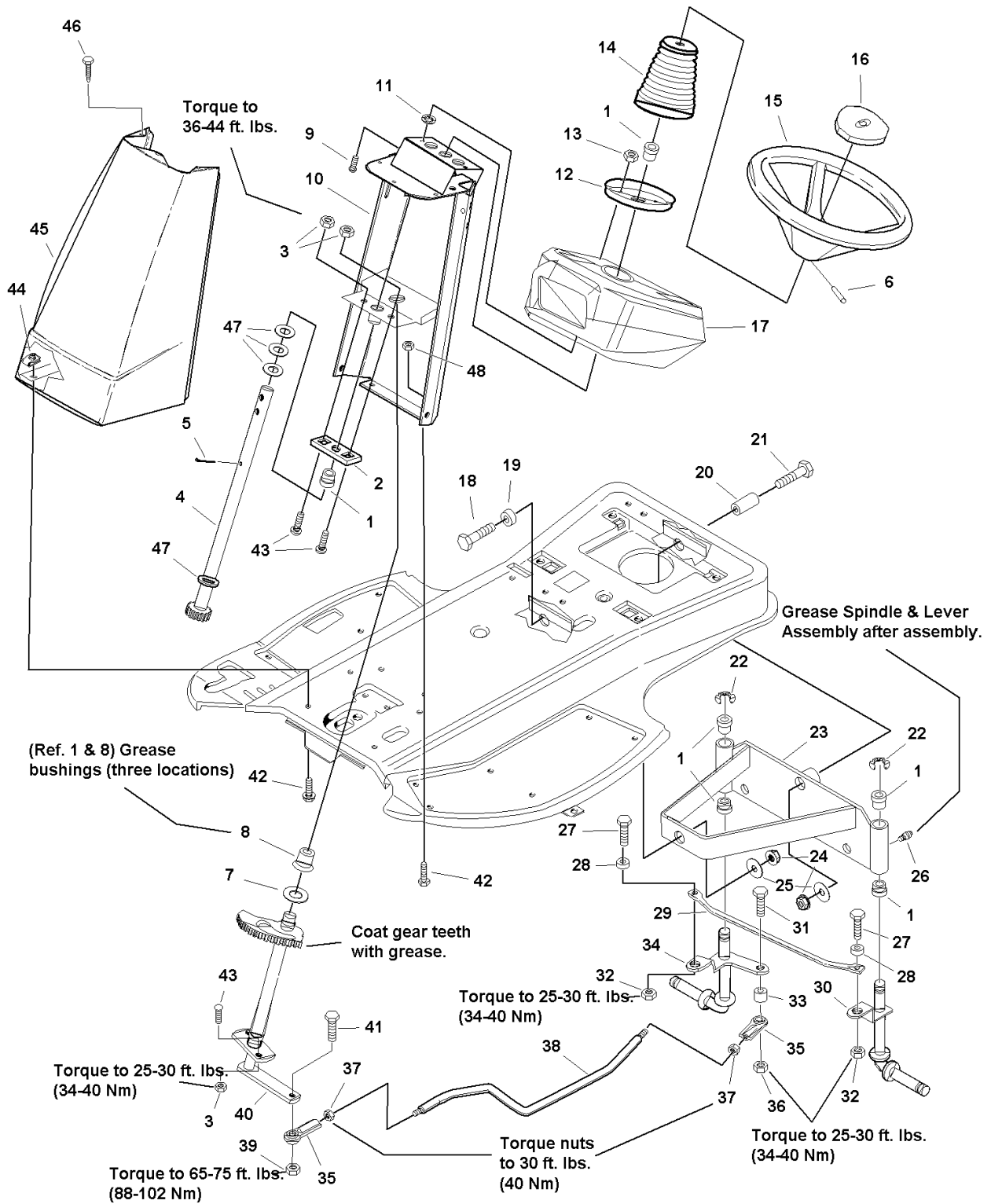
The above parts group applies to the following Mfg. Nos.:

1694106 - Lancer	1694320 - 4417	2690051 - 4417
1694255 - 4416	1694348 - 4416	
1694292 - Lancer	2690020 - Lancer	
1694294 - 4417	2690021 - 4417	
1694317 - Lancer	2690023 - 4416	
1694319 - 4416	2690050 - Lancer	

Steering Group

NOTE: Unless noted otherwise, use the standard hardware torque specification chart.

985951



The above parts group applies to the following Mfg. Nos.:

- | | | |
|------------------|------------------|----------------|
| 1694106 - Lancer | 1694320 - 4417 | 2690051 - 4417 |
| 1694255 - 4416 | 1694348 - 4416 | |
| 1694292 - Lancer | 2690020 - Lancer | |
| 1694294 - 4417 | 2690021 - 4417 | |
| 1694317 - Lancer | 2690023 - 4416 | |
| 1694319 - 4416 | 2690050 - Lancer | |

Steering Group

REF NO	PART NO.	QTY.	DESCRIPTION
1	2176440SM	6	BUSHING, Nylon
2	1703508ASM	1	PLATE, Mounting
3	1928352SM	4	NUT, Hex Flange Whiz Lock, 3/8-16, Black
4	1722495SM	1	SHAFT & PINION ASSEMBLY
5	1919314SM	1	PIN, Cotter, Black
6	1960540SM	1	PIN, Spring, 5/16 x 2-1/2, Black
7	2860202SM	1	WASHER, 3/4
8	1666001SM	1	BUSHING, Metal
9	1931317SM	2	CARRIAGE BOLT, 1/4-20 x 3/4
10	1722497ASM	1	SUPPORT ASSEMBLY
11	1960518SM	2	NUT, Push, 1/4, Black
12	1721736ASM	1	PLATE, Mounting
13	2828732	2	NUT, Hex KEPS, 1/4-20, Black
14	1722749SM	1	COVER, Black Rubber
15	1722738SM	1	STEERING WHEEL
16	1722319SM	1	CAP, Steering Wheel
17	1723111SM	1	DASHBOARD
18	1921525SM	1	CAPSCREW, Hex Head, 1/2-13 x 1-3/4, Black
19	2105386SM	1	SPACER
20	1723129SM	1	SPACER
21	1960245SM	1	CAPSCREW, Hex Head, 1/2-13 x 3, Black
22	1611710SM	2	RING, Klip, External 3/4, Black
23	1724616SM	1	AXLE ASSEMBLY,w/Bushings & Lube Fitting
24	1960355SM	2	NUT, Hex Lock ESNA Heavy, 1/2-13, Black
25	1918431SM	2	WASHER, 1/2, Black
26	2821133SM	3	FITTING, Lube
27	1921210SM	2	CAPSCREW, Hex Head, 3/8-16 x 1, Black
28	1611705SM	2	SPACER, Powder Metal
29	1722387SM	1	ROD, Tie
30	1677131ASM	1	SPINDLE & LEVER ASSEMBLY, RH (Lancer LH)
31	1921969SM	1	CAPSCREW, Hex Head, 3/8-16 1-1/2
32	1960339SM	2	NUT, Hex Flange Lock, 3/8-16, Black
33	1708236SM	1	SPACER
34	1677133ASM	1	SPINDLE & LEVER ASSEMBLY, LH (Lancer RH)
35	1702779SM	2	BALL JOINT
36	1930645SM	1	NUT, Hex Flange Lock, 3/8-16, Black
37	1919262SM	2	NUT, Hex Head, 1/2-20, Black
38	1722504SM	1	DRAG LINK
39	1930644SM	1	NUT, Hex Flange Two Way Lock, 1/2-13, Black
40	1724793ASM	1	SHAFT & GEAR ASSEMBLY
41	1920328SM	1	CAPSCREW, Hex Head, 1/2-13 x 1-1/2, Black
42	1930591SM	2	CAPSCREW, Hex Head, 5/16-18 x 3/4
43	1931350SM	4	CARRIAGE BOLT, 3/8-16 x 1 , Black
44	1935255SM	6	NUT, Speed, 5/16-18

Footnotes

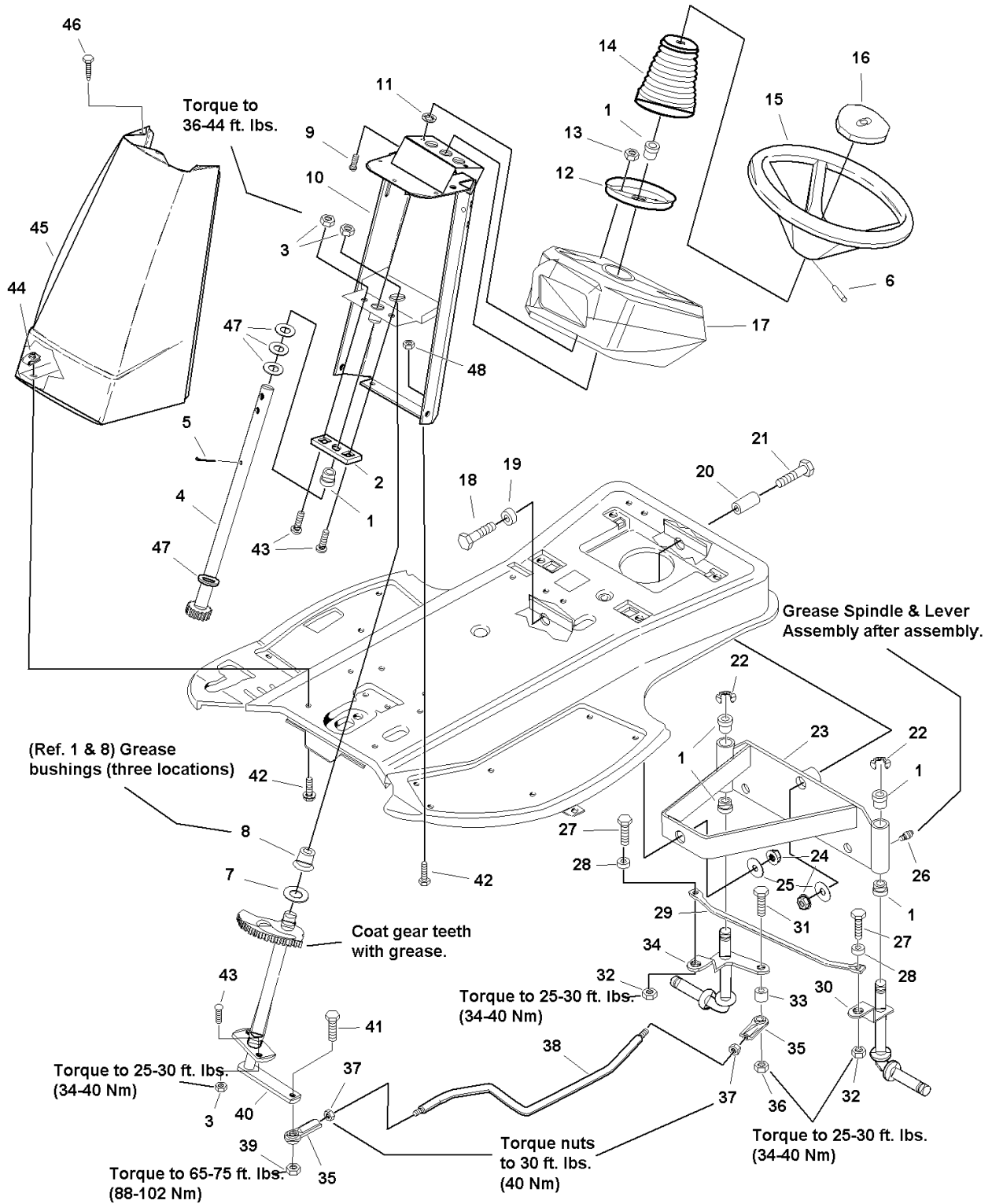
The above parts group applies to the following Mfg. Nos.:

1694106 - Lancer	1694320 - 4417	2690051 - 4417
1694255 - 4416	1694348 - 4416	
1694292 - Lancer	2690020 - Lancer	
1694294 - 4417	2690021 - 4417	
1694317 - Lancer	2690023 - 4416	
1694319 - 4416	2690050 - Lancer	

Steering Group

NOTE: Unless noted otherwise, use the standard hardware torque specification chart.

985951



The above parts group applies to the following Mfg. Nos.:

- | | | |
|------------------|------------------|----------------|
| 1694106 - Lancer | 1694320 - 4417 | 2690051 - 4417 |
| 1694255 - 4416 | 1694348 - 4416 | |
| 1694292 - Lancer | 2690020 - Lancer | |
| 1694294 - 4417 | 2690021 - 4417 | |
| 1694317 - Lancer | 2690023 - 4416 | |
| 1694319 - 4416 | 2690050 - Lancer | |

Steering Group

REF NO	PART NO.	QTY.	DESCRIPTION
45	1715998CSM	1	SHROUD, Steering
46	1927429SM	3	CAPSCREW, Hex Head, 1/4-20 x 5/8, Black
47	1960114SM	4	WASHER, 3/4, Black
48	1927557SM	2	NUT, Hex Flange Lock, 5/16-18, Black

Footnotes

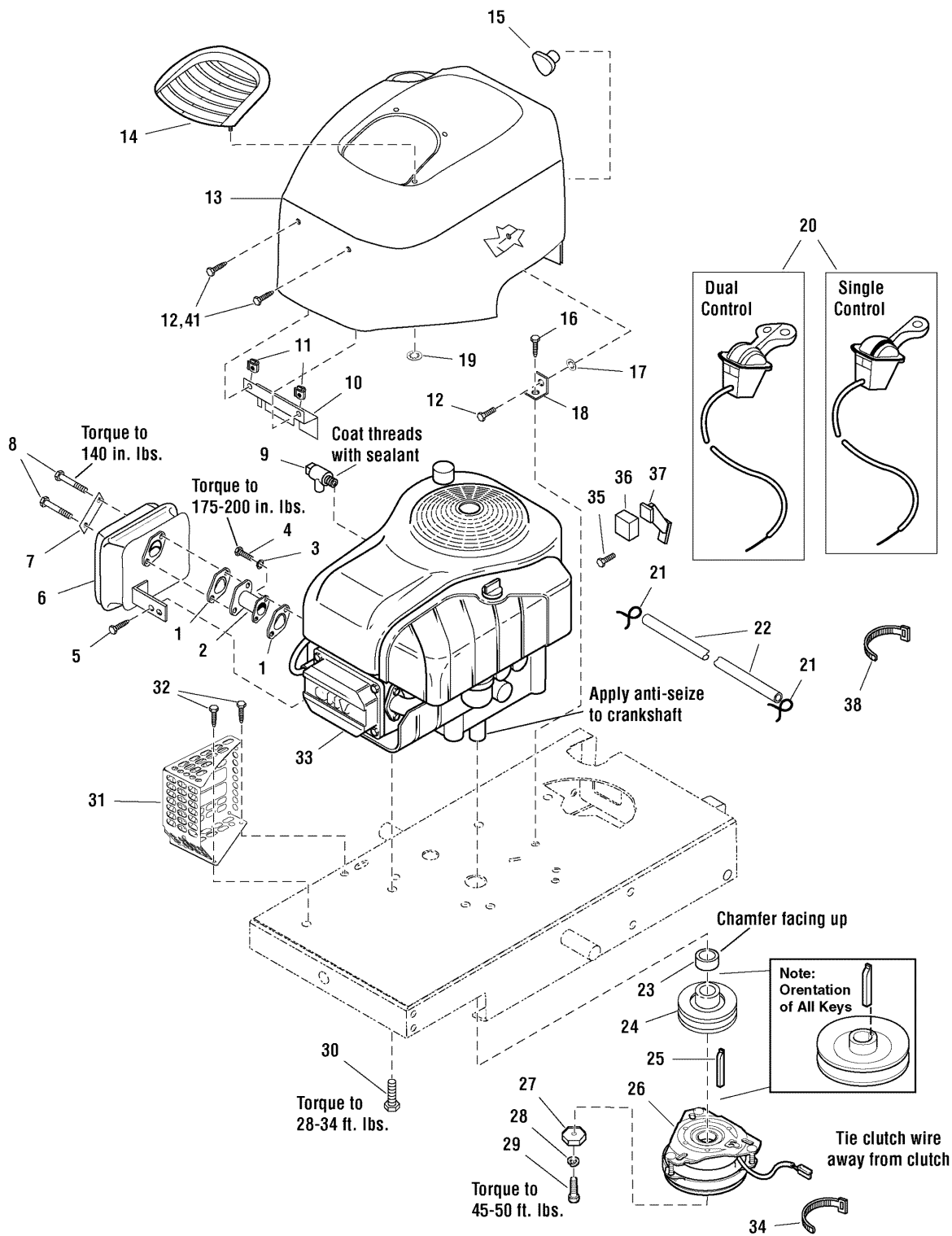
The above parts group applies to the following Mfg. Nos.:

1694106 - Lancer	1694320 - 4417	2690051 - 4417
1694255 - 4416	1694348 - 4416	
1694292 - Lancer	2690020 - Lancer	
1694294 - 4417	2690021 - 4417	
1694317 - Lancer	2690023 - 4416	
1694319 - 4416	2690050 - Lancer	

Engine & Electric Clutch - 15HP & 17HP Briggs & Stratton

985948

NOTE: Unless noted otherwise, use the standard hardware torque specification chart.



The above parts group applies to the following Mfg. Nos.:

- | | | |
|------------------|------------------|----------------|
| 1694106 - Lancer | 1694320 - 4417 | 2690051 - 4417 |
| 1694255 - 4416 | 1694348 - 4416 | |
| 1694292 - Lancer | 2690020 - Lancer | |
| 1694294 - 4417 | 2690021 - 4417 | |
| 1694317 - Lancer | 2690023 - 4416 | |
| 1694319 - 4416 | 2690050 - Lancer | |

Engine & Electric Clutch - 15HP & 17HP Briggs & Stratton

REF NO	PART NO.	QTY.	DESCRIPTION
1	*	2	GASKET, Exhaust
2	1723468SM	1	ADAPTER, Muffler
3	1917356SM	2	LOCKWASHER, 5/16
4	1936228SM	2	CAPSCREW, Hex Socket Head, 5/16-18 x 3/4
5	1927429SM	1	CAPSCREW, Hex Washer Head, Taptite, 1/4-20 x 5/8
6	1723469SM	1	MUFFLER
7	*	1	LOCK, Screw
8	*	2	CAPSCREW
9	1708405SM	1	VALVE, Shut Off
10	1723298A	1	BRACKET, Engine Cover
11	1926018SM	2	NUT, Speed, 1/4-20
12	1930594SM	3 / 1	CAPSCREW, Hex Head, Whiz Lock, 1/4-20 x 3/4 * Export / Domestic
13	1723113SM	1	COVER, Engine
14	1722111SM	1	SCOOP, Hood
15	1713855SM	1	KNOB, 3 Sided Soft Plastic
16	1930601SM	1	CAPSCREW, Hex Washer Head, Taptite, 5/16-18 x 5/8
17	1960518SM	1	PUSH NUT, 1/4
18	1668500A	1	BRACKET
19	1933988SM	4	PUSH NUT, 5/16
20	1724012SM	1	CONTROL, Throttle, Dual, W/Knob
20	1722955SM	1	CONTROL, Throttle, Single, W/Knob
21	2860112SM	2	CLAMP, Hose
22	1718678SM	1	HOSE, Fuel
23	1723390SM	1	SPACER
24	1713187SM	1	PULLEY & HUB ASSEMBLY
25	2105337SM	1	KEY, Hi Pro, 1/4 x 2
26	1686883SM	1	CLUTCH, Electric
27	1708264SM	1	WASHER, Hex
28	1918199SM	1	LOCKWASHER, 7/16
29	1960649SM	1	CAPSCREW, Hex Head, 7/16-20 x 3-1/2
30	2830598SM	4	CAPSCREW, Hex Washer Head, Taptite, 3/8-16 x 1-1/2
31	1723476A	1	HEAT SHIELD, Muffler
32	1664847SM	2	CAPSCREW, Hex Washer Head, Taptite, 5/16-18 x 3/4
33	*	1	ENGINE, 15HP Briggs & Stratton Intek, Model 31F777, Type 0111
33	*	1	ENGINE, 17HP Briggs & Stratton Intek, Model 31F770, Type 0110
34	2832747SM	1	TIE, Self Locking, 3-5/8" Long
35	2860661SM	1	SCREW, Flat Head, #6 x 5/8, (Export Only)
36	1723949SM	1	PAD, Rubber, (Export Only)
37	1708442SM	1	STOP, Throttle, (Export Only)
38	1701011SM	1	TIE, Self Locking, 7-5/16" Long
41	1935023SM	0 / 2	SCREW, Double Wing 1/4-20 x 5/8 * Export / Domestic

Footnotes

Note* See your local Briggs & Stratton distributor for parts and service.

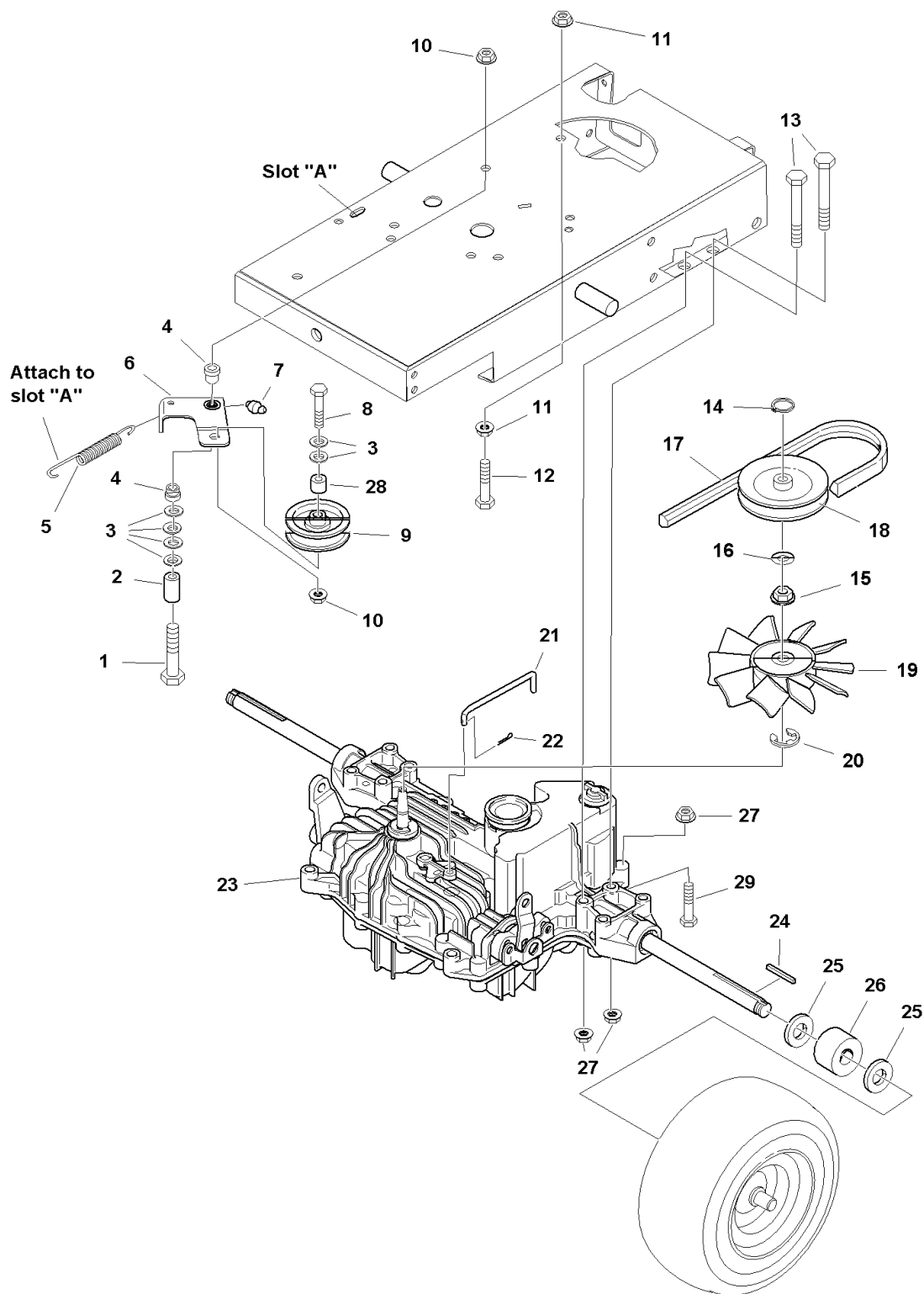
The above parts group applies to the following Mfg. Nos.:

1694106 - Lancer	1694320 - 4417	2690051 - 4417
1694255 - 4416	1694348 - 4416	
1694292 - Lancer	2690020 - Lancer	
1694294 - 4417	2690021 - 4417	
1694317 - Lancer	2690023 - 4416	
1694319 - 4416	2690050 - Lancer	

Transmission Group

985949

NOTE: Unless noted otherwise,
use the standard hardware torque
specification chart.



The above parts group applies to the following Mfg. Nos.:

- | | | |
|------------------|------------------|----------------|
| 1694106 - Lancer | 1694320 - 4417 | 2690051 - 4417 |
| 1694255 - 4416 | 1694348 - 4416 | |
| 1694292 - Lancer | 2690020 - Lancer | |
| 1694294 - 4417 | 2690021 - 4417 | |
| 1694317 - Lancer | 2690023 - 4416 | |
| 1694319 - 4416 | 2690050 - Lancer | |

Transmission Group

REF NO	PART NO.	QTY.	DESCRIPTION
1	1923701SM	1	CAPSCREW, Hex Head, 3/8-16 x 2, Black
2	1674669SM	1	SPACER
3	1924940SM	7	WASHER, 3/8, Black
4	1676148SM	2	BUSHING
5	1725250SM	1	SPRING, Extension, 7-3/4" Long
6	1722969ASM	1	ARM ASSEMBLY
7	2812808SM	1	FITTING, Lube
8	1921969SM	1	CAPSCREW, Hex Head, 3/8-16 x 1-1/2, Black
9	1724387SM	1	PULLEY, Idler, 3-1/4
10	1960339SM	2	NUT, Hex Flange Lock, 3/8-16, Black
11	1927557SM	2	NUT, Hex Flange Lock, 5/16-18, Black
12	1921978SM	1	CAPSCREW, Hex Head 5/16-18 x 2 G5
13	1921719SM	6	CAPSCREW, Hex Head, 5/16-18 x 2-1/2, Black
14	1724316SM	2	SNAP RING
15	1724312SM	2	SPLINE COLAR
16	1723415SM	1	LOCKWASHER
17	1715128SM	1	V-BELT
18	1724313SM	1	PULLEY
19	1724314SM	1	FAN
20	1718076SM	1	"E" RING
21	1723161SM	1	ROD, Hydro Bypass
22	1923360SM	1	PIN, Cotter
23	1721022SM	1	TRANSMISSION ASSEMBLY, Foot Control, K46Q
24	1717749SM	2	KEY, Parallel
25	2860202SM	4	WASHER, 3/4
26	1723820SM	2	SPACER
27	1935048SM	7	NUT, Hex Flange Lock, 5/16-18
28	1666294SM	1	SPACER
29	1960585SM	1	CAPSCREW, Hex Head, 5/16-18 x 1-3/4

Footnotes

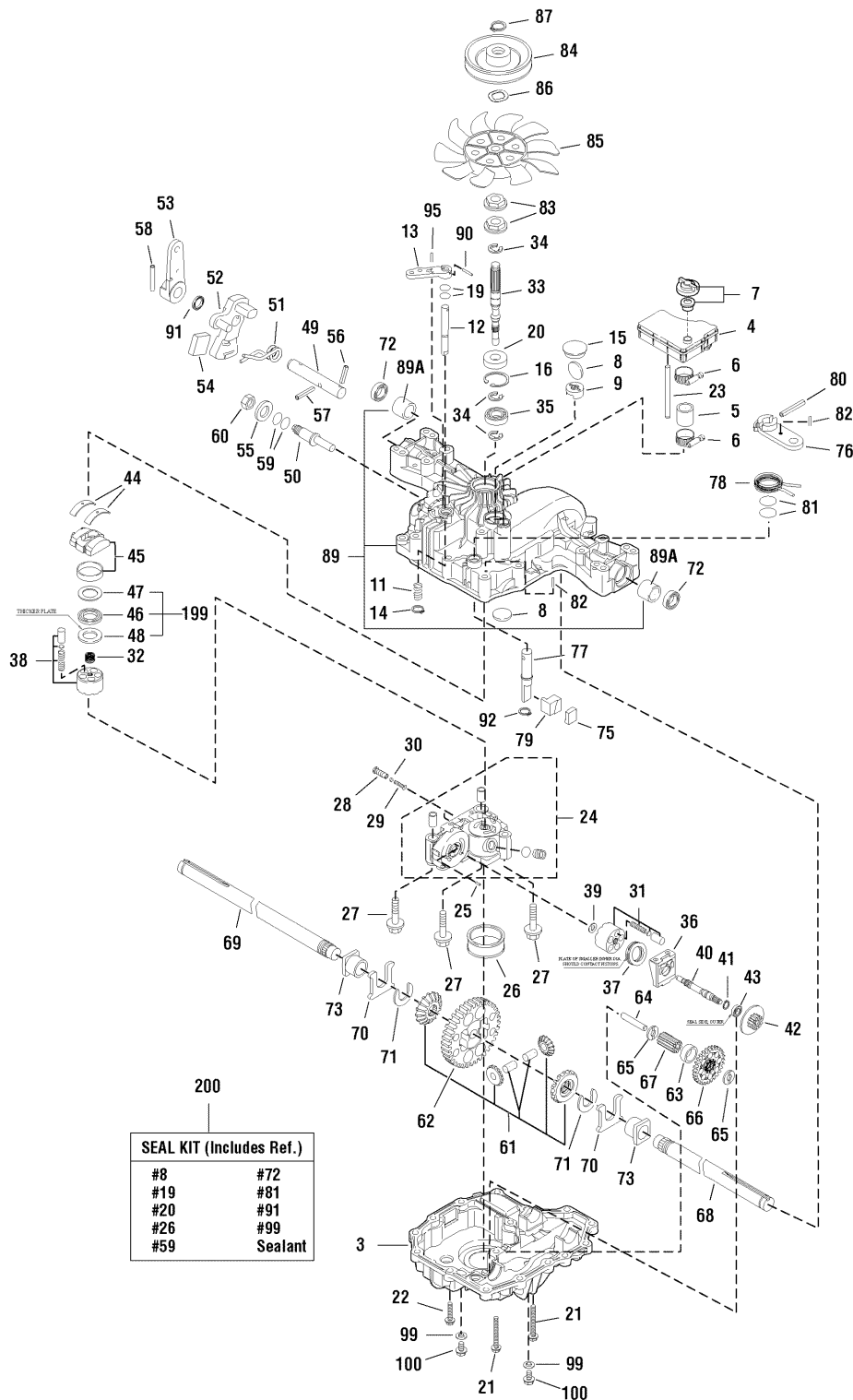
The above parts group applies to the following Mfg. Nos.:

1694106 - Lancer	1694320 - 4417	2690051 - 4417
1694255 - 4416	1694348 - 4416	
1694292 - Lancer	2690020 - Lancer	
1694294 - 4417	2690021 - 4417	
1694317 - Lancer	2690023 - 4416	
1694319 - 4416	2690050 - Lancer	

Transmission SERVICE PARTS - Tuff Torq K-46Q

NOTE: Unless noted otherwise,
use the standard hardware torque
specification chart.

1721022



The above parts group applies to the following Mfg. Nos.:

- | | | |
|------------------|------------------|----------------|
| 1694106 - Lancer | 1694320 - 4417 | 2690051 - 4417 |
| 1694255 - 4416 | 1694348 - 4416 | |
| 1694292 - Lancer | 2690020 - Lancer | |
| 1694294 - 4417 | 2690021 - 4417 | |
| 1694317 - Lancer | 2690023 - 4416 | |
| 1694319 - 4416 | 2690050 - Lancer | |

Transmission SERVICE PARTS - Tuff Torq K-46Q

REF NO	PART NO.	QTY.	DESCRIPTION
3	1724278SM	1	LOWER HOUSING
4	1731981SM	1	RESERVOIR TANK
5	1724335SM	1	TUBE
6	1724336SM	2	MINIATURE CLAMP
7	1718052SM	1	VENT VALVE
8	1724279SM	2	MAGNET
9	1724337SM	1	HOLDER, MAGNET
11	1725730SM	1	SPRING
12	1724338SM	1	SHAFT, Bypass
13	1720418SM	1	LEVER, Bypass
14	1718061SM	1	RING
15	1724282SM	1	SEALING CAP
16	1708650SM	1	RING, Snap
19	1708691SM	2	"O" RING
20	1708651SM	1	SEAL
21	1707789SM	14	SCREW, Tapping
22	1724284SM	2	TAPPING SCREW
23	1724339SM	1	SUPPORT
24	1724340SM	1	CENTER CASE, Complete
25	1718070SM	1	PIN
26	1724341SM	1	FILTER K55
27	1720805SM	3	BOLT
28	1724286SM	2	IDS VALVE
29	1724287SM	2	IDS SPRING
30	1724288SM	2	BALL, 3/16
31	1718079SM	1	CYLINDER BLOCK
32	1724290SM	1	SPRING, Pump
33	1724291SM	1	PUMP SHAFT
34	1718076SM	3	RING, "E"
35	1718083SM	1	BEARING
36	1718077SM	1	HOUSING
37	1718078SM	1	BEARING
38	1725831SM	1	CYLINDER BLOCK
39	1718084SM	1	WASHER
40	1724293SM	1	SHAFT MOTOR
41	1708672SM	1	RING, Snap
42	1724294SM	1	MOTOR GEAR
43	1718083SM	1	BEARING
44	1724342SM	2	THRUST METAL
45	1720426SM	1	SWASH PLATE COMPLETE
46	1718086SM	1	BEARING
47	1718087SM	1	THRUST PLATE
48	1718088SM	1	THRUST PLATE
49	1724343SM	1	CONTROL SHAFT

Footnotes

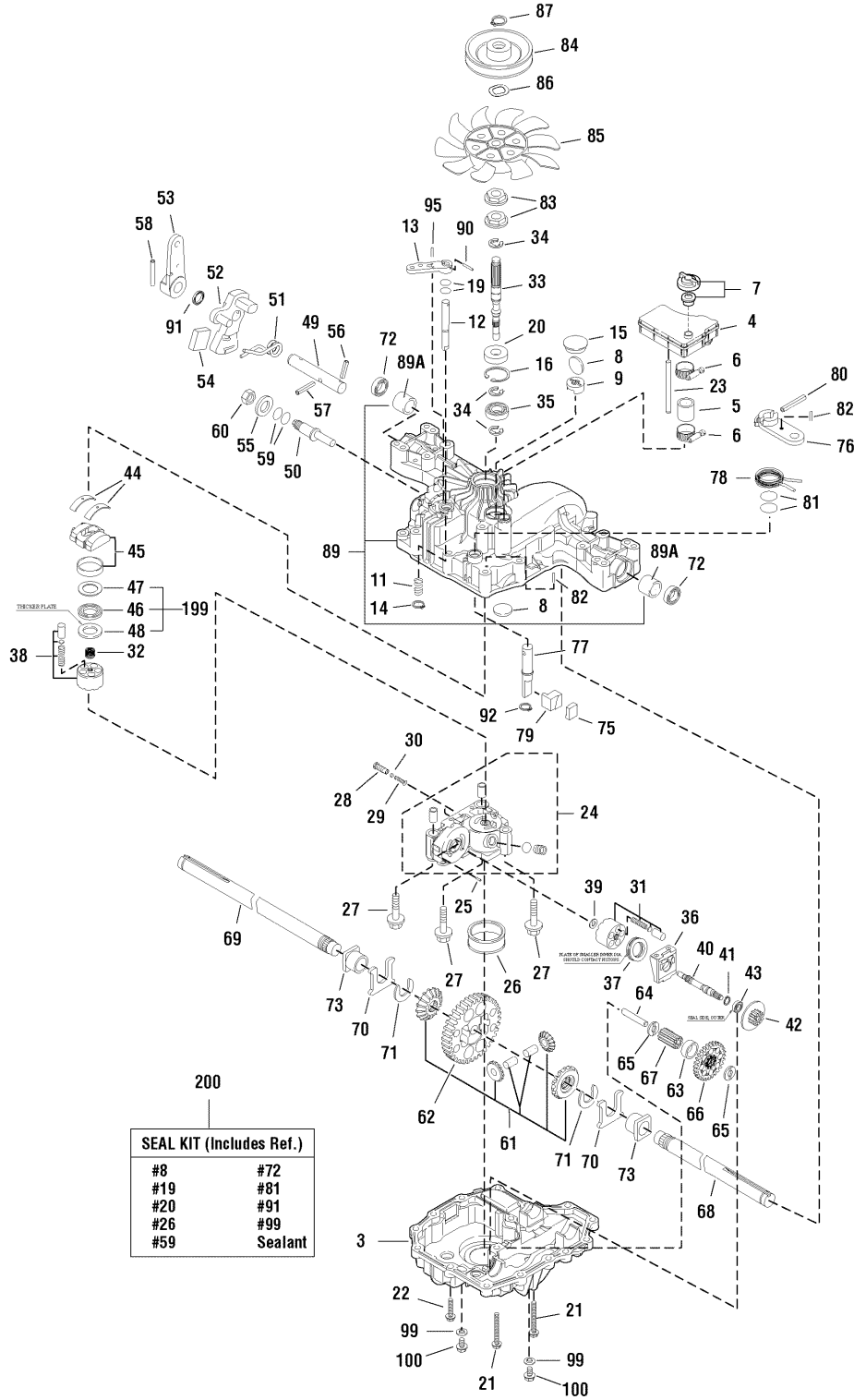
The above parts group applies to the following Mfg. Nos.:

1694106 - Lancer	1694320 - 4417	2690051 - 4417
1694255 - 4416	1694348 - 4416	
1694292 - Lancer	2690020 - Lancer	
1694294 - 4417	2690021 - 4417	
1694317 - Lancer	2690023 - 4416	
1694319 - 4416	2690050 - Lancer	

Transmission SERVICE PARTS - Tuff Torq K-46Q

1721022

NOTE: Unless noted otherwise,
use the standard hardware torque
specification chart.



The above parts group applies to the following Mfg. Nos.:

- | | | |
|------------------|------------------|----------------|
| 1694106 - Lancer | 1694320 - 4417 | 2690051 - 4417 |
| 1694255 - 4416 | 1694348 - 4416 | |
| 1694292 - Lancer | 2690020 - Lancer | |
| 1694294 - 4417 | 2690021 - 4417 | |
| 1694317 - Lancer | 2690023 - 4416 | |
| 1694319 - 4416 | 2690050 - Lancer | |

Transmission SERVICE PARTS - Tuff Torq K-46Q

REF NO	PART NO.	QTY.	DESCRIPTION
50	1724344SM	1	FULCRUM, Eccentric
51	1724345SM	1	SPRING, Torsion
52	1724346SM	1	CONTROL ARM
53	1724347SM	1	CONTROL LEVER
54	1724348SM	1	JERKY PLATE
55	1708689SM	1	WASHER
56	1724349SM	1	COTTER PIN
57	1724311SM	2	PIN, SPRING
58	1718100SM	1	PIN, Roll
59	1707879SM	2	"O" RING
60	1708692SM	1	NUT
61	1724297SM	2	DIFF PINION, Kit
62	1724298SM	1	FINAL GEAR
63	1724299SM	1	COLLAR, Final
64	1724300SM	1	REDUCTION SHAFT
65	1720439SM	2	WASHER
66	1724301SM	1	REDUCTION GEAR
67	1724302SM	1	FINAL PINION
68	1724303SM	1	AXLE SHAFT, LH
69	1724304SM	1	AXLE SHAFT, RH
70	1718112SM	2	THRUST WASHER
71	1718113SM	2	RING
72	1718111SM	2	SEAL
73	1718110SM	2	BUSHING
75	1724305SM	1	SHOE, BRAKE
76	1724306SM	1	ARM, Brake
77	1724307SM	1	SHAFT, BRAKE
78	1724308SM	1	RETURN SPRING
79	1724309SM	1	ACTUATOR, Brake
80	1724310SM	1	PIN
81	1708690SM	2	"O" RING
82	1707839SM	2	PIN
83	1724312SM	2	SPLINE COLLAR
84	1724313SM	1	PULLEY
85	1724314SM	1	FAN
86	1724315SM	1	LOCK WASHER
87	1724316SM	2	SNAP RING
89	1729860SM	1	UPPER HOUSING, (Includes Ref. No. 89A)
89A	1720814SM	2	BUSHING
90	1707839SM	1	ROLL PIN
91	1724318SM	1	OIL SEAL
99	1708649SM	2	WASHER, Seal
100	1724324SM	2	SCREW, Cap
199	1724942SM	1	BEARING, Thrust (Includes Ref. Nos. 46, 47 & 48)
200	1727541	1	SEAL KIT, K46 (Includes Ref. Nos. 8, 19, 20, 26, 59, 72, 81, 91, 99 & Sealant)

Footnotes

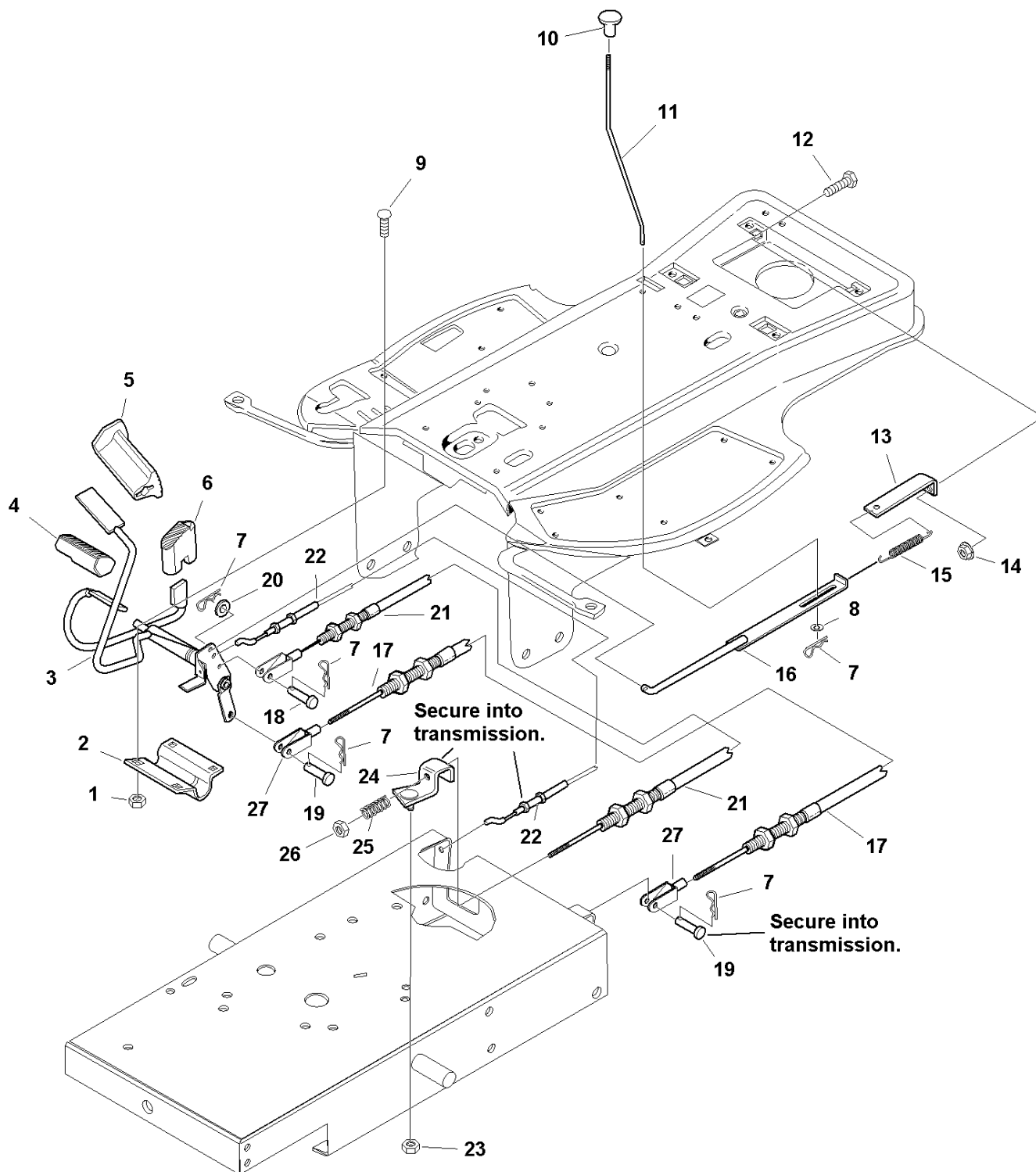
The above parts group applies to the following Mfg. Nos.:

1694106 - Lancer	1694320 - 4417	2690051 - 4417
1694255 - 4416	1694348 - 4416	
1694292 - Lancer	2690020 - Lancer	
1694294 - 4417	2690021 - 4417	
1694317 - Lancer	2690023 - 4416	
1694319 - 4416	2690050 - Lancer	

Controls Group

985950

NOTE: Unless noted otherwise,
use the standard hardware torque
specification chart.



The above parts group applies to the following Mfg. Nos.:

1694106 - Lancer	1694320 - 4417	2690051 - 4417
1694255 - 4416	1694348 - 4416	
1694292 - Lancer	2690020 - Lancer	
1694294 - 4417	2690021 - 4417	
1694317 - Lancer	2690023 - 4416	
1694319 - 4416	2690050 - Lancer	

Controls Group

REF NO	PART NO.	QTY.	DESCRIPTION
1	1919438SM	4	NUT, Hex Lock ESNA, 5/16-18, Black
2	1713784SM	1	CLAMP
3	1722524ASM	1	FOOT PEDAL & BRAKE ARM ASSEMBLY
4	1715834SM	1	PEDAL, Foot, Forward
5	1721577SM	1	PAD, Brake Pedal
6	1715835SM	1	PEDAL, Foot, Reverse
7	1960221SM	5	CLIP, Hair Pin, Black
8	1921319SM	1	WASHER, 1/4, Black
9	1931333SM	4	CARRIAGE BOLT, 5/16-18 x 3/4, Black
10	1713855SM	1	KNOB, 1/4-20 Thread
11	1714385SM	1	ROD, Parking Brake, Yellow
12	1930591SM	1	CAPSCREW, Hex Head, Whiz Lock 5/16-18 x 3/4, Black
13	1723794A	1	BRACKET
14	1931277SM	1	NUT, Hex, 5/16, Black
15	2165068SM	1	SPRING, Extension, 6-1/2" Long
16	1722529SM	1	LEVER & ROD ASSEMBLY
17	1722974SM	1	CABLE, Forward/Reverse
18	1960261SM	1	PIN, Yoke, Drilled, 1/4 x 3/4, Black
19	1711115	2	PIN, Clevis, 11/32 x 1-1/4
20	1919326SM	1	WASHER, 5/16, Black
21	1722616SM	1	CABLE, Brake Control
22	1722617SM	1	CABLE, Clutch Control
23	1935048SM	1	NUT, Hex Flange Lock, 5/16-18, Black
24	1717728SM	1	GUIDE BELT & STUD ASSEMBLY
25	1725508SM	1	SPRING, Compression
26	1960608SM	1	NUT, Hex Center Lock, 1/4-20
27	1722975SM	2	CLEVIS

Footnotes

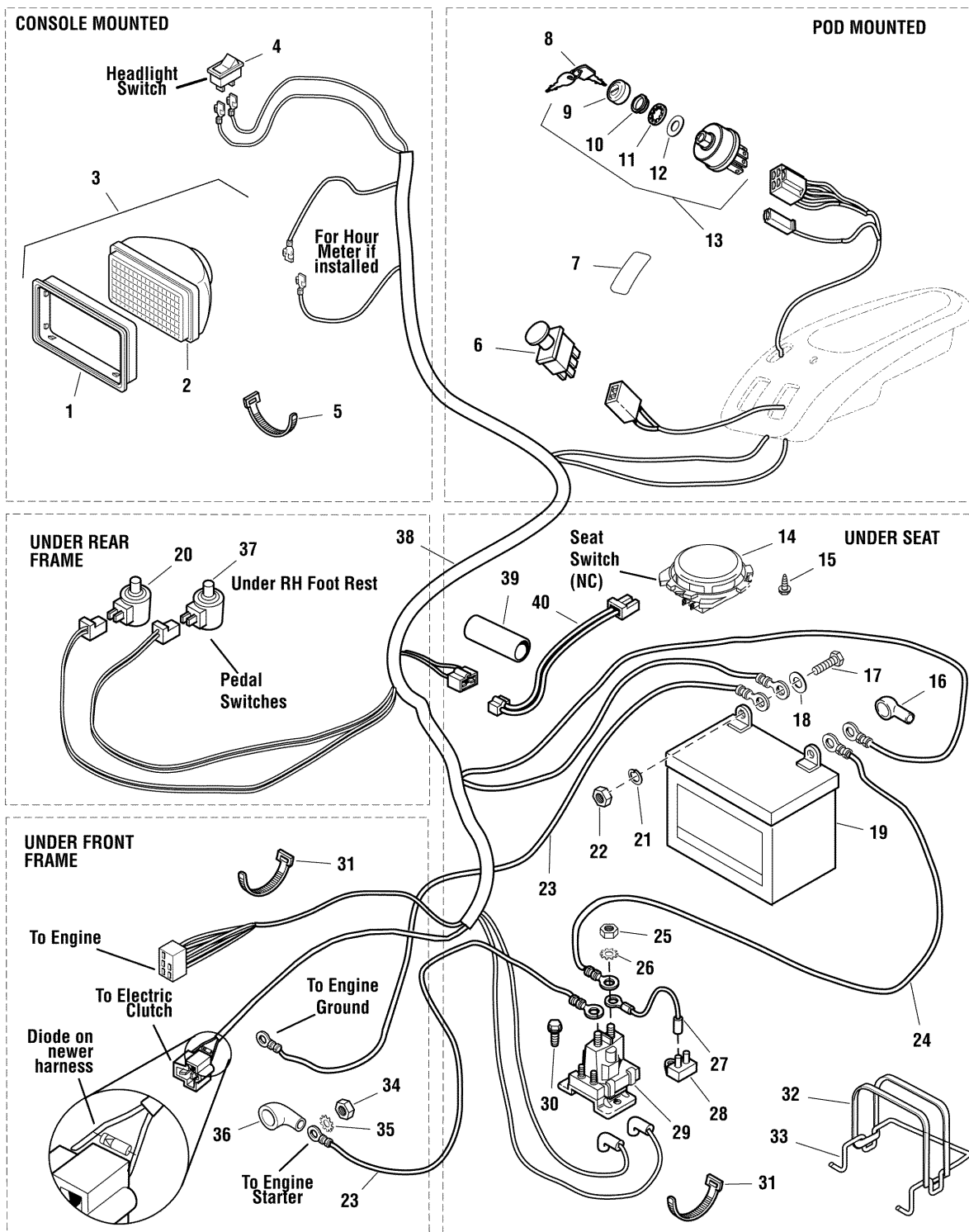
The above parts group applies to the following Mfg. Nos.:

1694106 - Lancer	1694320 - 4417	2690051 - 4417
1694255 - 4416	1694348 - 4416	
1694292 - Lancer	2690020 - Lancer	
1694294 - 4417	2690021 - 4417	
1694317 - Lancer	2690023 - 4416	
1694319 - 4416	2690050 - Lancer	

Electrical Group

985954

NOTE: Unless noted otherwise, use the standard hardware torque specification chart.



The above parts group applies to the following Mfg. Nos.:

- | | | |
|------------------|------------------|----------------|
| 1694106 - Lancer | 1694320 - 4417 | 2690051 - 4417 |
| 1694255 - 4416 | 1694348 - 4416 | |
| 1694292 - Lancer | 2690020 - Lancer | |
| 1694294 - 4417 | 2690021 - 4417 | |
| 1694317 - Lancer | 2690023 - 4416 | |
| 1694319 - 4416 | 2690050 - Lancer | |

Electrical Group

REF NO	PART NO.	QTY.	DESCRIPTION
1	1719227SM	1	BEZEL, Headlight
2	1719230SM	1	HEADLIGHT HOUSING
3	1719230SM	1	HEADLIGHT ASSEMBLY (Includes Ref. Nos. 1 & 2)
4	1703799SM	1	SWITCH, Rocker, Headlight
5	2832747SM	1	TIE, Self Locking, 3-5/8, Black
6	1722887SM	1	SWITCH, PTO, Push/Pull, w/Symbols
7	1709188SM	1	PLUG
8	1717163SM	2	KEYS, Ignition
9	1717550SM	1	COVER, Ignition Switch
10	1717549SM	1	NUT, Hex, 5/8-32
11	1960547SM	1	LOCKWASHER, Intrnal Tooth, 5/8, Thin, Black
12	2101025SM	1	WASHER, 5/8, Thin, Black
13	1686734SM	1	SWITCH ASSEMBLY, Ignition (Includes Ref. Nos. 8, 9, 10, 11, & 13)
14	1718981SM	1	SWITCH, Seat, NC
15	1960536SM	2	CAPSCREW, Hex Head Plastite, 1/4-20 x 1/2
16	1677296SM	1	BOOT, Insulator
17	2823341SM	2	CAPSCREW, Hex Head, 1/4-20 x 3/4
18	2821319SM	2	WASHER, 1/4
19	1685215SM	1	BATTERY, 12 Volt
20	1720401SM	1	SWITCH, Push,Grey, Pedal Switch, (Domestic Only)
21	2816964SM	2	LOCKWASHER, 1/4
22	2816622SM	3	NUT, Hex, 1/4-20
23	1703484SM	2	CABLE, # 6 x 42-1/2" Long, 2 Ring Terminals
24	1716549SM	1	CABLE, # 6 x 10" Long, 2 Ring Terminals
25	2820263SM	2	NUT, Hex, 5/16-24
26	2820426SM	2	LOCKWASHER, External Tooth, 5/16
27	1665237SM	1	WIRE, 12GA, 6" Long Red
28	1665238SM	1	BREAKER, Circuit, 12Volt, 20Amps
29	1686981SM	1	SOLENOID, 4 Pole 12Volt
30	1927429SM	2	CAPSCREW, Hex Head Taptite, 14-20 x 5/8
31	1701011SM	2	TIE, Self Locking, 7-5/16 Long, Black
32	1665872SM	1	STRAP, Black Rubber
33	1667805SM	1	BRACE, Battery
34	2816950SM	1	NUT, Hex, 3/8-16
35	2820427SM	1	LOCKWASHER, External Tooth, 3/8
36	2122023SM	1	COVER, Terminal, Red
37	1720411SM	1	SWITCH, Push, Black, Pedal Switch
38	1724903SM	1	HARNESS, Wiring
39	1715014SM	1	SHRINK TUBE
40	1715010SM	1	WIRE ASSEMBLY, 16GA, 16" Long, Black/Tan

Footnotes

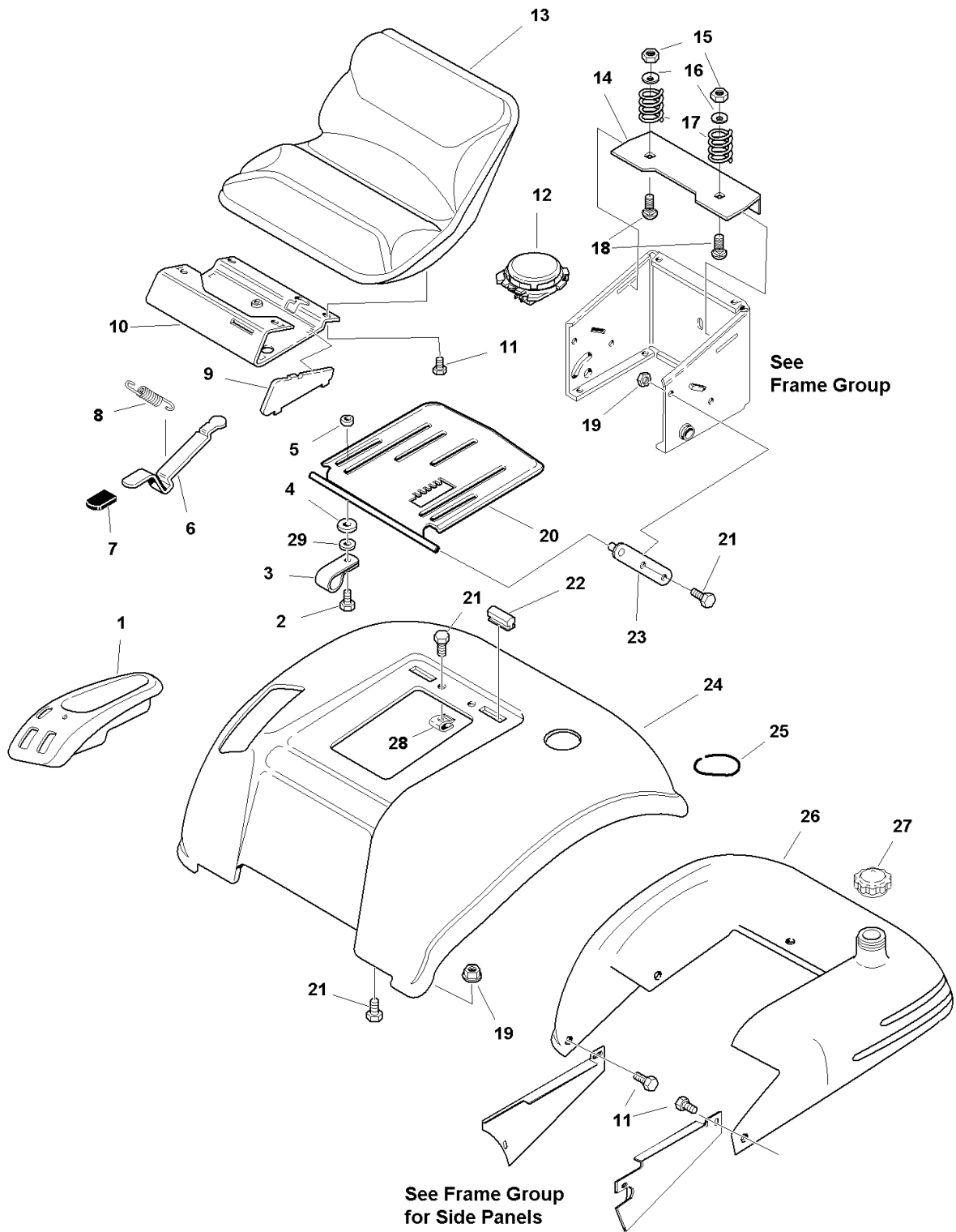
The above parts group applies to the following Mfg. Nos.:

1694106 - Lancer	1694320 - 4417	2690051 - 4417
1694255 - 4416	1694348 - 4416	
1694292 - Lancer	2690020 - Lancer	
1694294 - 4417	2690021 - 4417	
1694317 - Lancer	2690023 - 4416	
1694319 - 4416	2690050 - Lancer	

Seat Deck & Fuel Tank Group

985953

NOTE: Unless noted otherwise, use the standard hardware torque specification chart.



The above parts group applies to the following Mfg. Nos.:

- | | | |
|------------------|------------------|----------------|
| 1694106 - Lancer | 1694320 - 4417 | 2690051 - 4417 |
| 1694255 - 4416 | 1694348 - 4416 | |
| 1694292 - Lancer | 2690020 - Lancer | |
| 1694294 - 4417 | 2690021 - 4417 | |
| 1694317 - Lancer | 2690023 - 4416 | |
| 1694319 - 4416 | 2690050 - Lancer | |

Seat Deck & Fuel Tank Group

REF NO	PART NO.	QTY.	DESCRIPTION
1	1714542SM	1	POD, Control
2	1960086SM	3	SCREW, Torx Truss Head, 5/16-18 x 7/8, Black
3	1708008SM	1	CLAMP, Wire
4	1668681SM	3	WASHER, Curved, Special
5	1666697SM	3	SPACER
6	1713597SM	1	LEVER, Seat Latch, Black
7	1715047SM	1	CAP, Black
8	2159106SM	1	SPRING, Extension, 4-1/4 Long
9	1714318SM	2	PANEL, Side
10	1713595SM	1	SLIDE, Seat
11	1931648SM	11	CAPSCREW, Hex Head Whiz Lock, 5/16-18 x 1/2, Black
12	1718981SM	1	SEAT SWITCH, NC
13	1687020SM	1	SEAT W/Cushion & Sensitivity
14	1715768A	1	PLATE, Spring
15	1919438SM	2	NUT, Hex Lock ESNA, 5/16-18, Black
16	1709256SM	2	WASHER, Spring
17	1717051SM	2	SPRING
18	1931335SM	2	CARRIAGE BOLT, 5/16-18 x 1, Black
19	1931277SM	6	NUT, Hex Whiz Lock, 5/16-18, Black
20	1718985SM	1	PAN & ROD ASEMBLY
21	1930591SM	12	CAPSCREW, Hex Head, Whiz Lock, 5/16-18 x 3/4, Black
22	1713794SM	2	STOP, Seat
23	1713758SM	2	BAR
24	1722918CSM	1	SEAT DECK
25	1719104SM	6	MOLDING, PCV, 12-3/8" Long
26	1722904SM	1	FUEL TANK
27	1722905SM	1	CAP, Fuel
28	1935255SM	6	NUT, Speed, 5/16-18
29	1919326SM	3	WASHER, 5/16

Footnotes

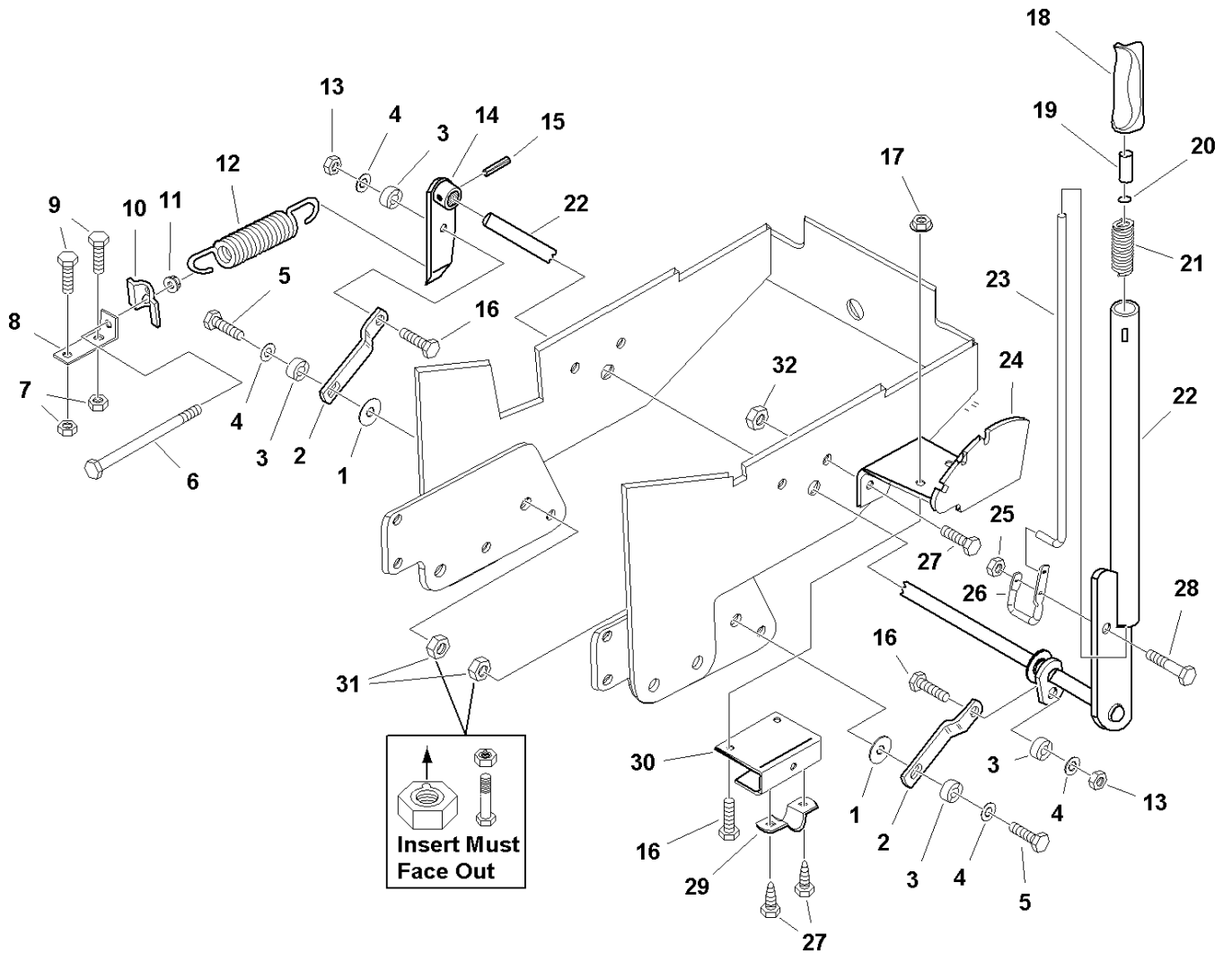
The above parts group applies to the following Mfg. Nos.:

1694106 - Lancer	1694320 - 4417	2690051 - 4417
1694255 - 4416	1694348 - 4416	
1694292 - Lancer	2690020 - Lancer	
1694294 - 4417	2690021 - 4417	
1694317 - Lancer	2690023 - 4416	
1694319 - 4416	2690050 - Lancer	

Lift Group

986041

NOTE: Unless noted otherwise,
use the standard hardware torque
specification chart.



The above parts group applies to the following Mfg. Nos.:

1694106 - Lancer	1694320 - 4417	2690051 - 4417
1694255 - 4416	1694348 - 4416	
1694292 - Lancer	2690020 - Lancer	
1694294 - 4417	2690021 - 4417	
1694317 - Lancer	2690023 - 4416	
1694319 - 4416	2690050 - Lancer	

Lift Group

REF NO	PART NO.	QTY.	DESCRIPTION
1	1960071SM	2	WASHER, 3/8, Black
2	1723194ASM	2	LINK, Lift
3	2154177SM	4	SPACER
4	1922755SM	4	WASHER, 3/8, Black
5	1921971SM	2	CAPSCREW, Hex Head, 3/8-16 x 1-3/4, Black
6	1722357SM	1	CAPSCREW, Hex Washer Head, 5/16-18 x 4-1/2, Black
7	1917372SM	2	NUT, Hex, 5/16-18, Black
8	1723202ASM	1	ANCHOR, Spring
9	1921719SM	2	CAPSCREW, Hex Head, 5/16-18 x 2-1/2
10	1723499SM	1	RETAINER, Spring
11	1935255SM	1	NUT, Speed, 5/16-18
12	1675232SM	1	SPRING, Extension, 9" Long
13	1930645SM	4	NUT, Hex Flange Lock, 3/8-16, Black
14	1723203ASM	1	BAR & HUB ASSEMBLY
15	2815523SM	1	PIN, Spring, 5/16 x 1-1/2
16	1920415SM	4	CAPSCREW, Hex Head, 3/8-16 x 1-1/4, Black
17	1931277SM	2	NUT, Hex Flange Whiz Lock, 5/16-18, Black
18	1722291SM	1	GRIP, Lift Lever
19	1723124SM	1	BUTTON, Red
20	1960674SM	1	NUT, Push, 1/4, Black
21	1723321SM	1	SPRING, Compression, 3.85" Long
22	1723200ASM	1	HANDLE ASSEMBLY, Lift
23	1723224SM	1	ROD
24	1723285ASM	1	QUADRANT, Lift
25	1920397SM	1	NUT, Hex Lock ESNA, 1/4-20, Black
26	1720599SM	1	LATCH "U" Wire
27	1930591SM	4	CAPSCREW, Hex Head, Whiz Lock, 5/16-18 x 3/4, Black
28	1921159SM	1	CAPSCREW, Hex Head, 1/4-20 x 2-1/4, Black
29	1665374SM	1	STRAP
30	1723529ASM	1	BRACE, Support
31	2860681SM	2	NUT, Hex Lock Aluminum Insert, 3/8-16
32	1928352SM	2	NUT, Hex Whiz Lock , 3/8-16

Footnotes

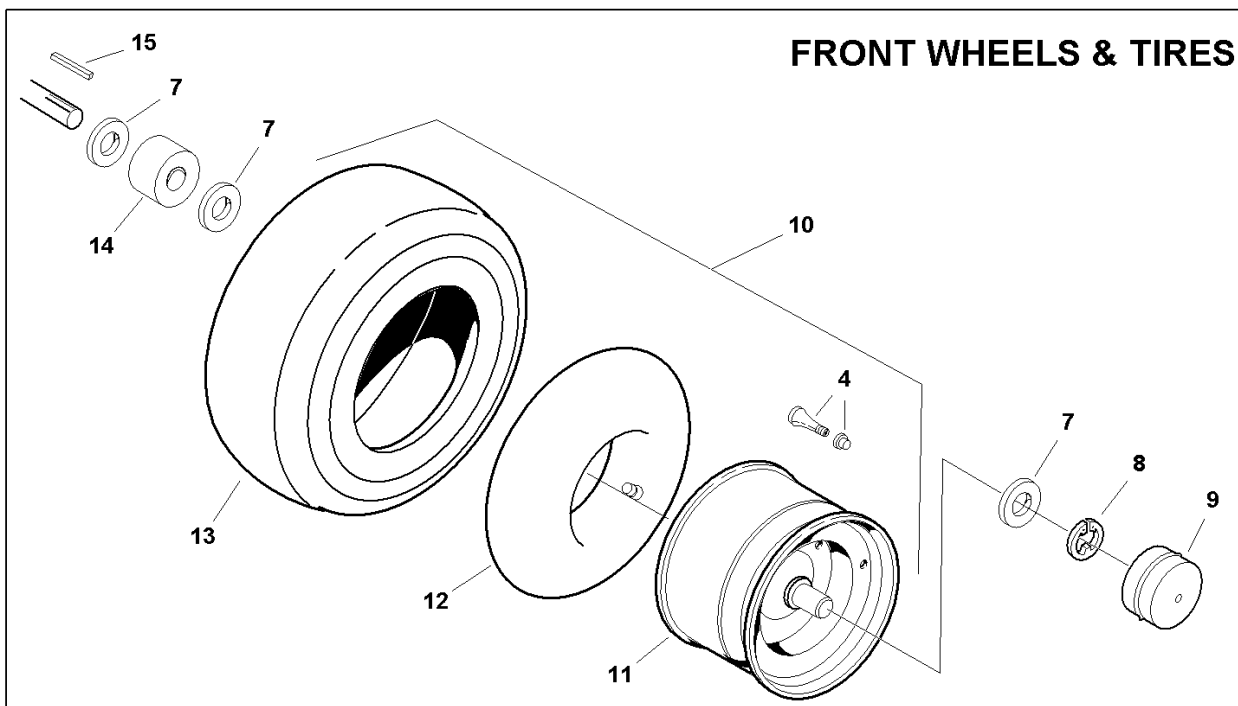
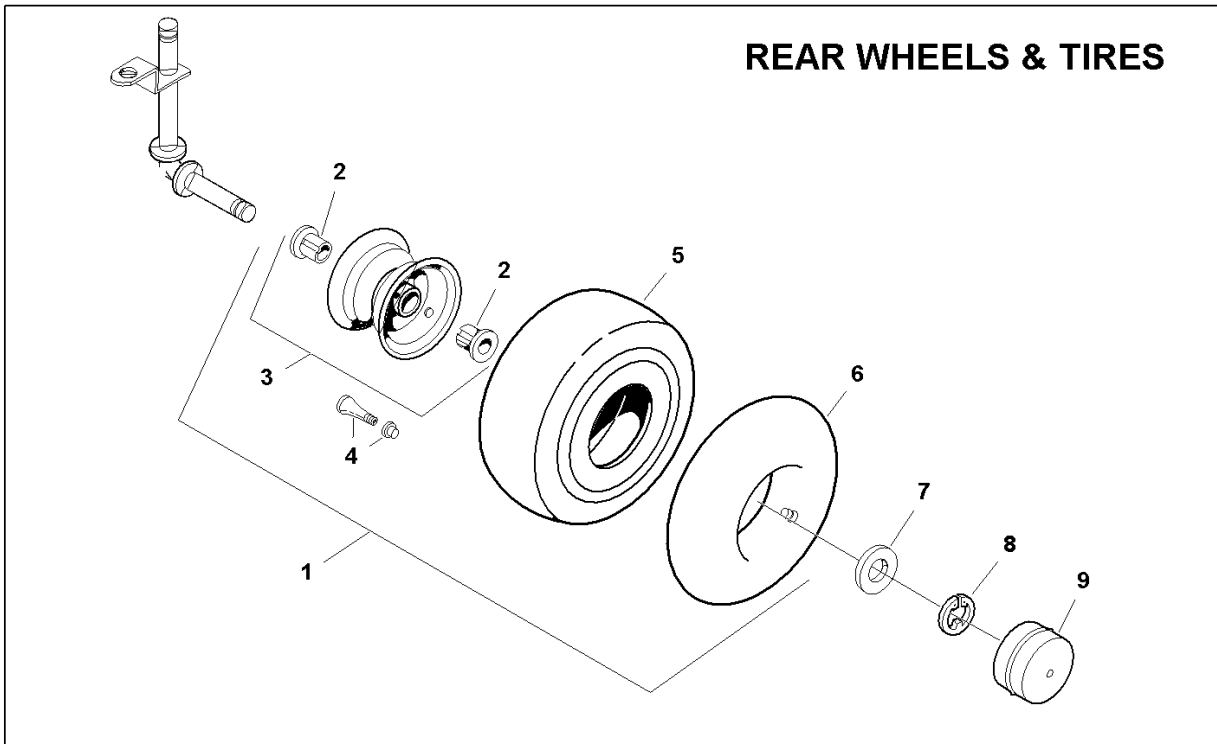
The above parts group applies to the following Mfg. Nos.:

1694106 - Lancer	1694320 - 4417	2690051 - 4417
1694255 - 4416	1694348 - 4416	
1694292 - Lancer	2690020 - Lancer	
1694294 - 4417	2690021 - 4417	
1694317 - Lancer	2690023 - 4416	
1694319 - 4416	2690050 - Lancer	

Wheels & Tires Group

W985956

NOTE: Unless noted otherwise,
use the standard hardware torque
specification chart.



The above parts group applies to the following Mfg. Nos.:

1694106 - Lancer	1694320 - 4417	2690051 - 4417
1694255 - 4416	1694348 - 4416	
1694292 - Lancer	2690020 - Lancer	
1694294 - 4417	2690021 - 4417	
1694317 - Lancer	2690023 - 4416	
1694319 - 4416	2690050 - Lancer	

Wheels & Tires Group

REF NO	PART NO.	QTY.	DESCRIPTION
1	1723227SM	2	WHEEL & TIRE ASEMBLY, Rear, (Includes Ref. Nos. 2, 3, 4, 5, & 6)
2	1713167SM	2	BEARING, Ball
3	1726301SM	1	WHEEL & BUSHINGS ASSEMBLY, (Includes Ref. No. 2)
4	2172353SM	4	VALVE STEM & CAP ASSEMBLY
5	1723777SM	1	TIRE, 15 X 6.00, 6 SUPER TURF TL
6	1664090SM	1	TUBE, Tire, 4.10/3.50, Rear
7	2860202SM	8	WASHER
8	2827794SM	4	RING, "E", External
9	1722675SM	4	CAP, Hub
10	1723228SM	2	WHEEL & TIRE ASSEMBLY, Front, (Includes Ref. Nos. 4, 11, 12, & 13)
11	1716132SM	1	WHEEL, 7.00 x 8.00
12	2164247SM	1	TUBE, Tire, 16 x 6.50
13	1723778SM	1	TIRE, 18 x 9.50, 8 SUPER TURF TL
14	1723820SM	2	SPACER
15	1717749SM	2	KEY, Parellel

Footnotes

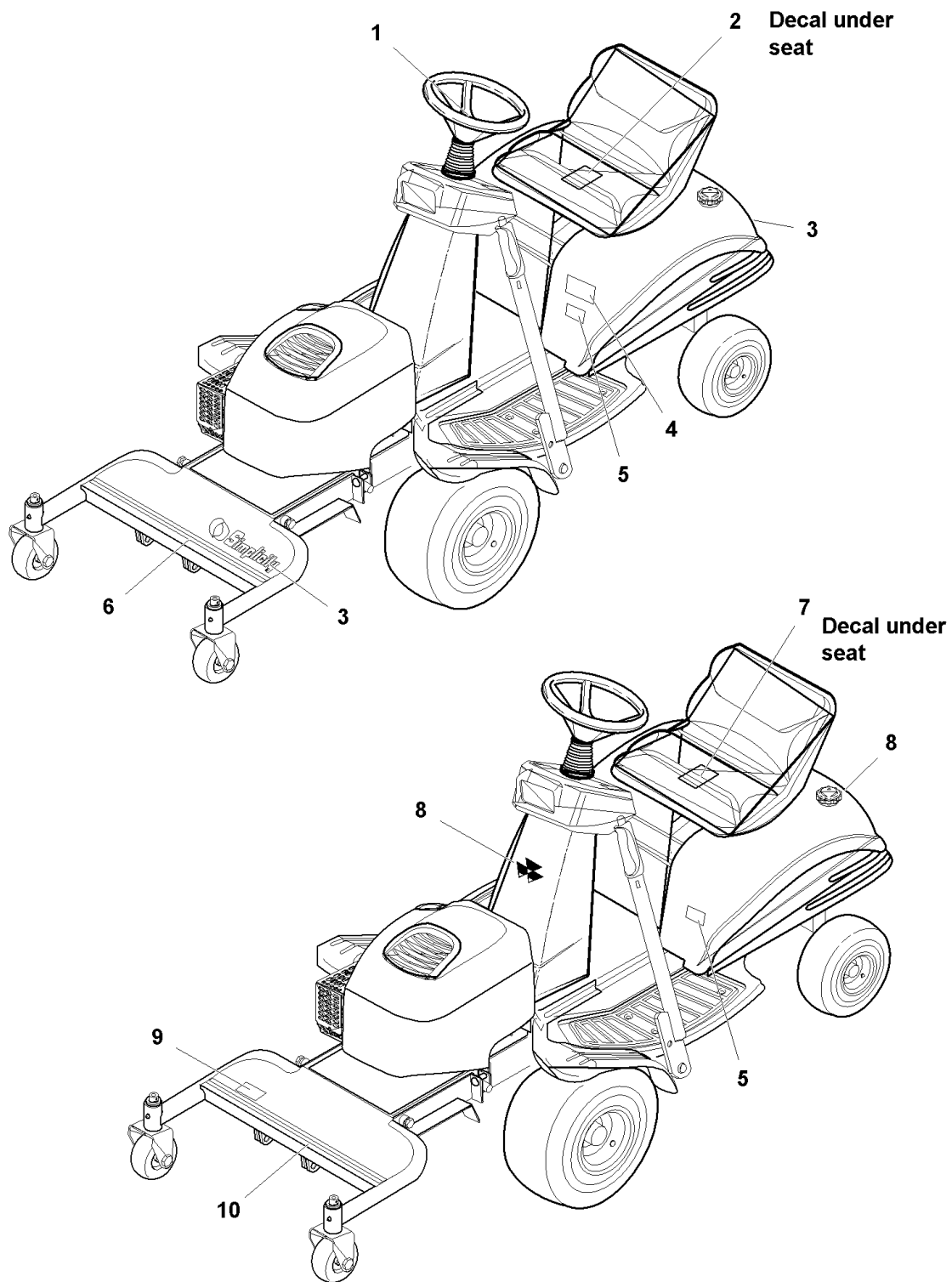
The above parts group applies to the following Mfg. Nos.:

1694106 - Lancer	1694320 - 4417	2690051 - 4417
1694255 - 4416	1694348 - 4416	
1694292 - Lancer	2690020 - Lancer	
1694294 - 4417	2690021 - 4417	
1694317 - Lancer	2690023 - 4416	
1694319 - 4416	2690050 - Lancer	

Decals - Brand & Model

NOTE: Unless noted otherwise, use the standard hardware torque specification chart.

B985956



The above parts group applies to the following Mfg. Nos.:

1694106 - Lancer	1694320 - 4417	2690051 - 4417
1694255 - 4416	1694348 - 4416	
1694292 - Lancer	2690020 - Lancer	
1694294 - 4417	2690021 - 4417	
1694317 - Lancer	2690023 - 4416	
1694319 - 4416	2690050 - Lancer	

Decals - Brand & Model

REF NO	PART NO.	QTY.	DESCRIPTION
1	1731418SM	1	DECAL, Icon, Simplicity
2	1720454SM	1	DECAL, Touch-up Paint, Deep Orange and Black
3	1722551SM	2	DECAL, Simplicity, Silver & Blue, w/Icon
4	1722832SM	1	DECAL, Lancer, Silver & Blue
5	1722548SM	1	DECAL, 15HP
5	1722550SM	1	DECAL, 17HP
6	1723785SM	1	DECAL, Stripe, Blue & Silver
7	1725072SM	1	DECAL, Touch-up Paint, Red and Black
8	1714363SM	2	DECAL, Massey Ferguson, 3 Triangle Logo
9	1723920SM	1	DECAL, Model 4416
9	1724254SM	1	DECAL, Model 4417
10	1723919SM	1	DECAL, Stripe, Massey Ferguson

Footnotes

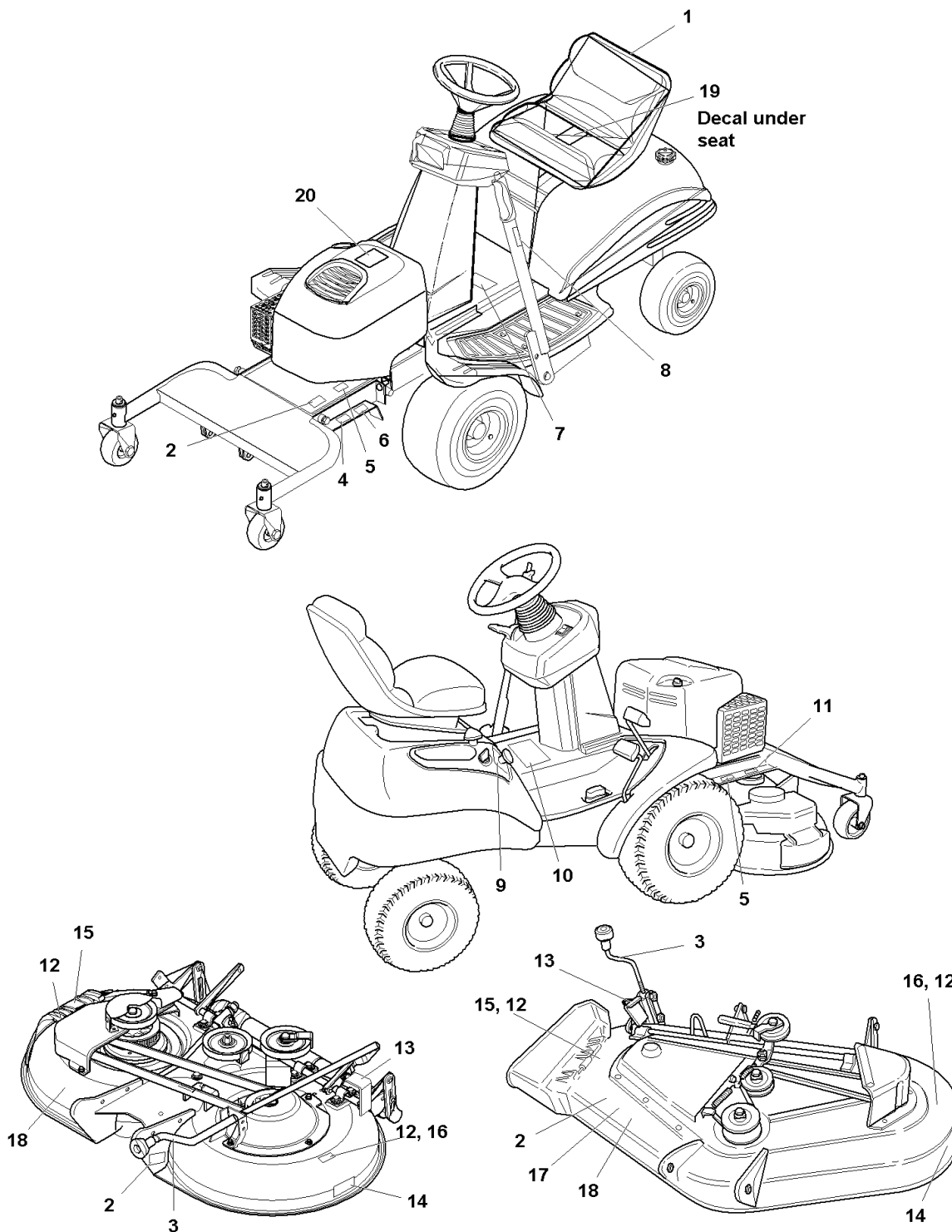
The above parts group applies to the following Mfg. Nos.:

1694106 - Lancer	1694320 - 4417	2690051 - 4417
1694255 - 4416	1694348 - 4416	
1694292 - Lancer	2690020 - Lancer	
1694294 - 4417	2690021 - 4417	
1694317 - Lancer	2690023 - 4416	
1694319 - 4416	2690050 - Lancer	

Decals - Safety & Common

NOTE: Unless noted otherwise, use the standard hardware torque specification chart.

C985956



The above parts group applies to the following Mfg. Nos.:

1694106 - Lancer	1694320 - 4417	2690051 - 4417
1694255 - 4416	1694348 - 4416	
1694292 - Lancer	2690020 - Lancer	
1694294 - 4417	2690021 - 4417	
1694317 - Lancer	2690023 - 4416	
1694319 - 4416	2690050 - Lancer	

Decals - Safety & Common

REF NO	PART NO.	QTY.	DESCRIPTION
1	1708927	1	DECAL, USA Logo
2	*	2	LABEL, CE & Serial Number, Export (Not Serviced)
2	*	1	DECAL, Serial Number (Not Serviced)
3	1723825SM	1	DECAL, Cutting Height Icons
4	1723786SM	1	DECAL, Belt Removal
5	1723823SM	2	DECAL, Warning Shear Point (Export Only)
6	*	1	DECAL, Patent (Not Serviced)
7	1723160SM	1	DECAL, Transmission Release Valve
8	1723143SM	1	DECAL, Lift Lever Symbols
9	1723826SM	1	DECAL, Ignition Switch
10	1723175SM	1	DECAL, Operating Instructions, Icons (Export Only)
10	1722814SM	1	DECAL, Operating Instructions,
11	1723824SM	1	DECAL, Caution, Read Manual
12	1720389SM	2	DECAL, Danger Rotating Blades
13	1723470SM	1	DECAL, Height of Cut
13	1720919SM	1	DECAL, Height of Cut, 40" (Export)
14	1722771SM	1	DECAL, Free Floating
15	1704277SM	1	DECAL, Danger, Do Not Operate W/O Deflector
16	1704276SM	1	DECAL, Danger Rotating Blades
17	1722789SM	1	DECAL, 44"
18	*	1	DECAL, OPEI, (Not Serviced)
19	1724379SM	1	DECAL, Belt & Blade, 56 Tooth
19	1727574SM	1	DECAL, Belt & Blade, 38 Tooth
20	1723071SM	1	DECAL, 17 HP Intek, Briggs & Stratton

Footnotes

Note* Not a service Part.

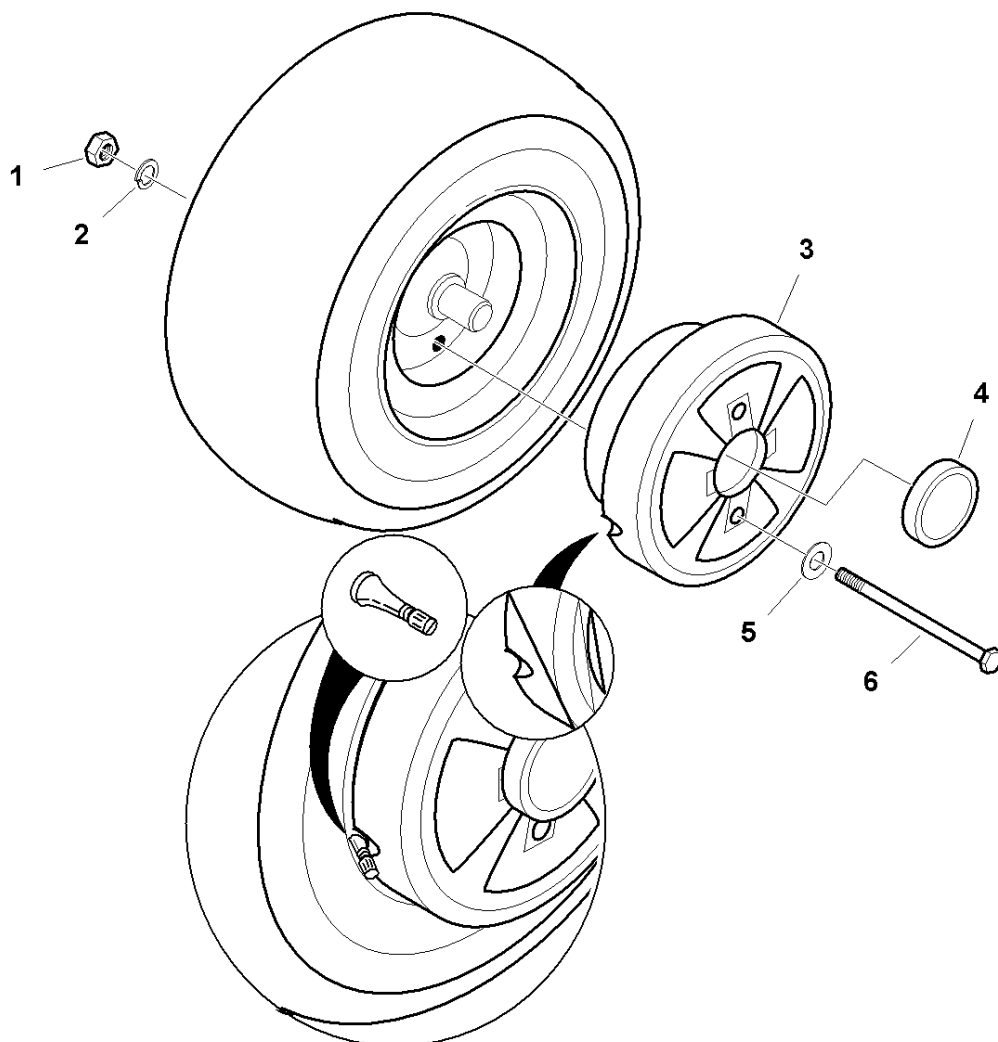
The above parts group applies to the following Mfg. Nos.:

1694106 - Lancer	1694320 - 4417	2690051 - 4417
1694255 - 4416	1694348 - 4416	
1694292 - Lancer	2690020 - Lancer	
1694294 - 4417	2690021 - 4417	
1694317 - Lancer	2690023 - 4416	
1694319 - 4416	2690050 - Lancer	

1694363 - Weight, Wheel

NOTE: Unless noted otherwise,
use the standard hardware torque
specification chart.

1694363



The above parts group applies to the following Mfg. Nos.:

1694106 - Lancer
1694255 - 4416
1694317 - Lancer
1694319 - 4416
1694320 - 4417

1694363 - Weight, Wheel

REF NO	PART NO.	QTY.	DESCRIPTION
1	1916950SM	4	NUT, Hex, 3/8-16
2	1916965SM	4	LOCKWASHER, 3/8
3	1724450SM	2	WEIGHT, Wheel (Includes Ref. Nos. 1, 2, 4, 5 & 6)
4	N/A	2	CAP, Wheel Weight
5	1924940SM	4	WASHER, 3/8
6	1960513SM	4	CAPSCREW, Hex, 3/8-16 x 8

Footnotes

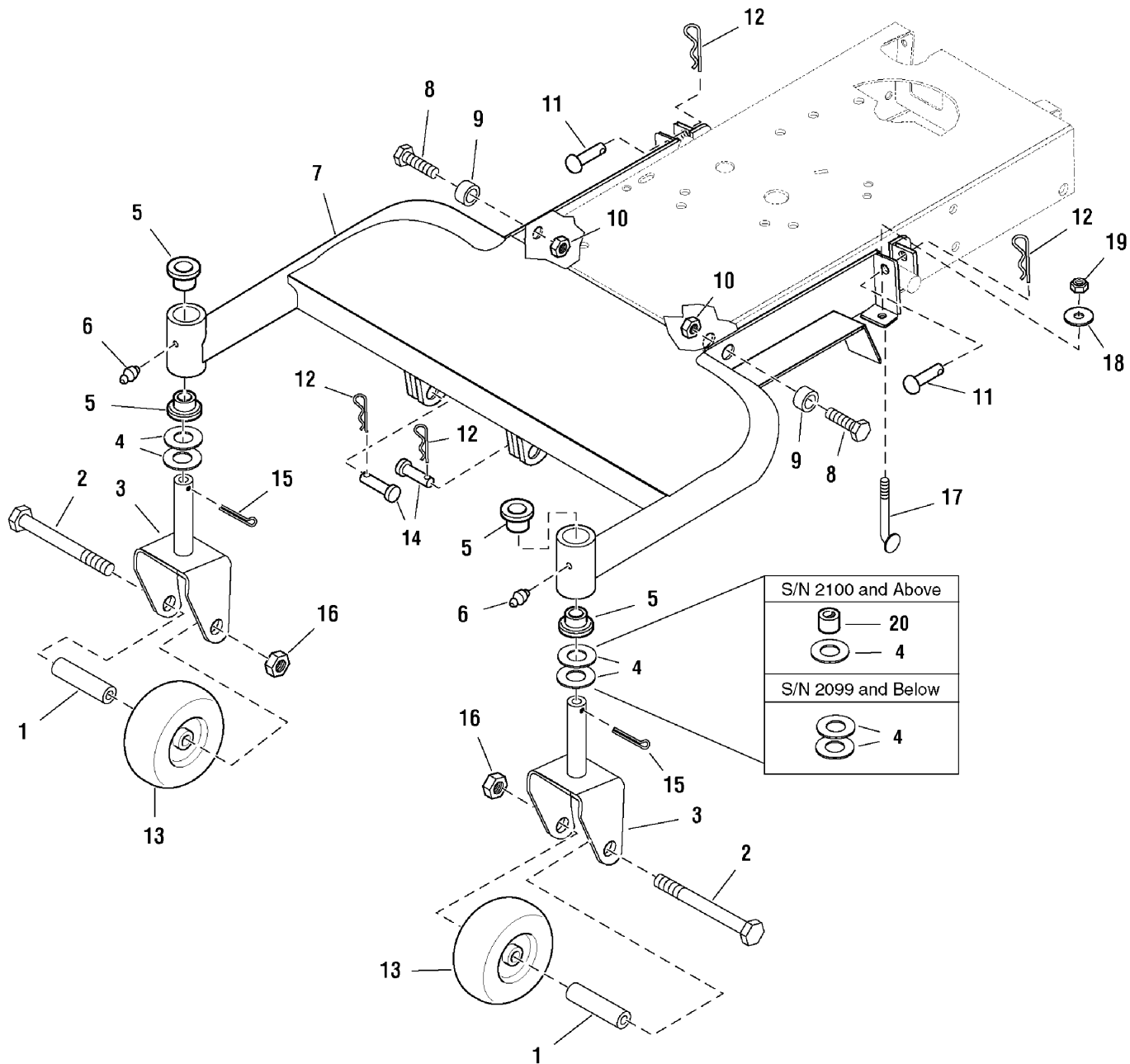
The above parts group applies to the following Mfg. Nos.:

1694106 - Lancer
1694255 - 4416
1694317 - Lancer
1694319 - 4416
1694320 - 4417

Mower Frame Group - with Height Adjustment

SL985961

NOTE: Unless noted otherwise,
use the standard hardware torque
specification chart.



The above parts group applies to the following Mfg. Nos.:

- | | | |
|------------------|------------------|----------------|
| 1694106 - Lancer | 1694320 - 4417 | 2690051 - 4417 |
| 1694255 - 4416 | 1694348 - 4416 | |
| 1694292 - Lancer | 2690020 - Lancer | |
| 1694294 - 4417 | 2690021 - 4417 | |
| 1694317 - Lancer | 2690023 - 4416 | |
| 1694319 - 4416 | 2690050 - Lancer | |

Mower Frame Group - with Height Adjustment

REF NO	PART NO.	QTY.	DESCRIPTION
1	1722952SM	2	SPACER
2	1923161SM	2	CAPSCREW, Hex Head, 1/2-13 x 4-1/2, Black
3	1726385ASM	2	BRACKET & SHAFT ASSEMBLY
4	2860202SM	*4	WASHER, 3/4, Black
5	1666001SM	4	BUSHING
6	1704314SM	2	FITTING, Lube
7	1724960C	1	FRAME ASSEMBLY
7	1724960D	1	FRAME ASSEMBLY
8	1920415SM	2	CAPSCREW, Hex Head, 3/8-16 x 1-1/4, Black
9	2154177SM	2	SPACER
10	1928352SM	2	NUT, Hex Flange Lock, 3/8-16, Black
11	2118053SM	2	PIN, Round Head, Drilled, 3/8 x 2, Black
12	1960074SM	4	CLIP, Hair Pin, Black
13	1722951SM	2	WHEEL, Caster
14	1724107SM	2	PIN, Clevis, Black
15	1918452SM	2	PIN, Cotter, 1/4 x 2, Black
16	1960379SM	2	NUT, Hex Lock Light, 1/2-13, Black
17	1724959SM	2	ROD, Height Adjuster
18	1919326SM	2	WASHER
19	1919438SM	2	NUT, Hex Lock, 5/16-18
20	1725762SM	2	SPACER

Footnotes

Note* For S/N 2100 & Above use P/N 1725760C, 1725760D

Note* Only for S/N 2100 & Above

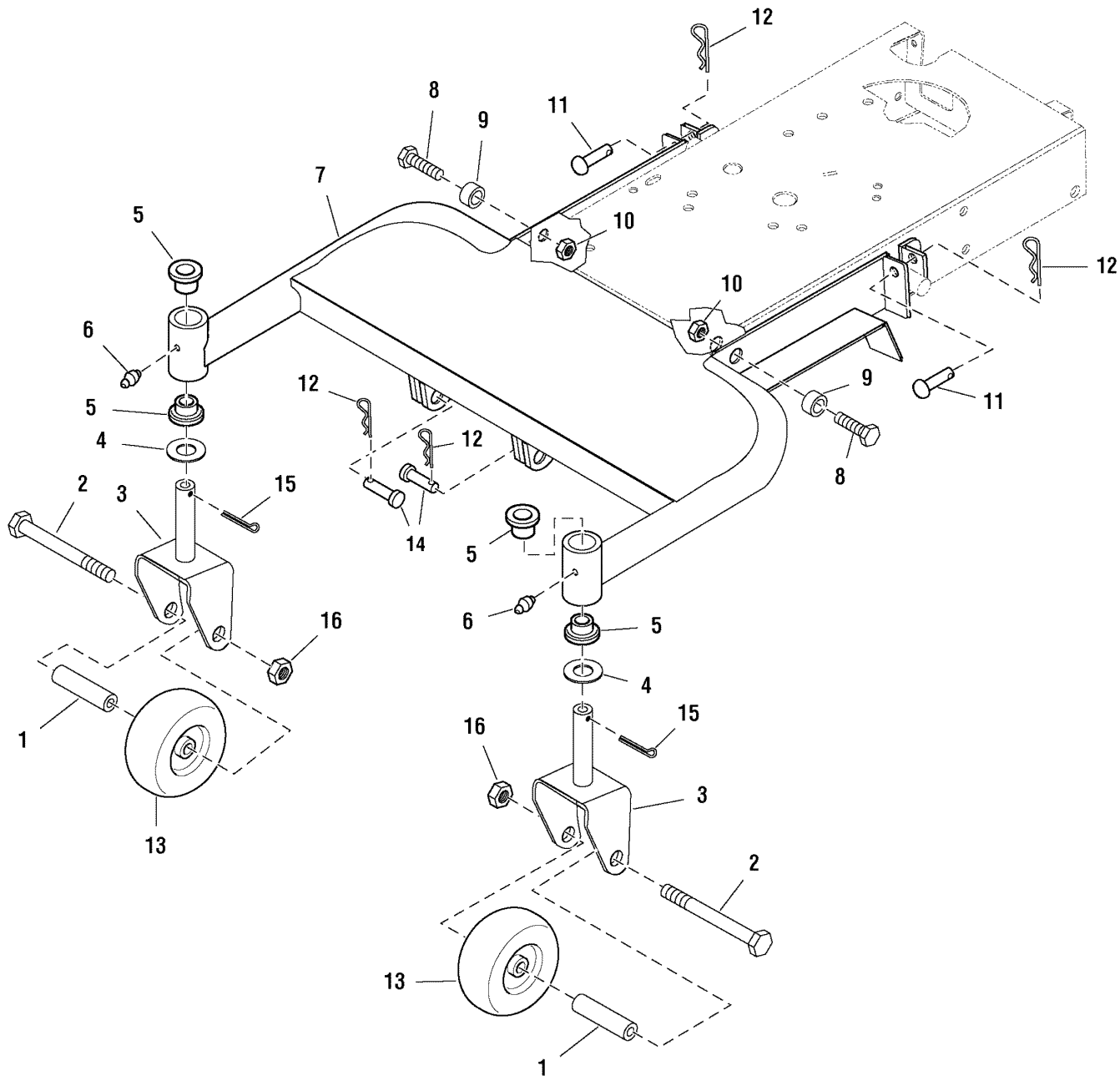
The above parts group applies to the following Mfg. Nos.:

1694106 - Lancer	1694320 - 4417	2690051 - 4417
1694255 - 4416	1694348 - 4416	
1694292 - Lancer	2690020 - Lancer	
1694294 - 4417	2690021 - 4417	
1694317 - Lancer	2690023 - 4416	
1694319 - 4416	2690050 - Lancer	

Mower Frame Group - without Height Adjustment

985961

NOTE: Unless noted otherwise,
use the standard hardware torque
specification chart.



The above parts group applies to the following Mfg. Nos.:

- | | | |
|------------------|------------------|----------------|
| 1694106 - Lancer | 1694320 - 4417 | 2690051 - 4417 |
| 1694255 - 4416 | 1694348 - 4416 | |
| 1694292 - Lancer | 2690020 - Lancer | |
| 1694294 - 4417 | 2690021 - 4417 | |
| 1694317 - Lancer | 2690023 - 4416 | |
| 1694319 - 4416 | 2690050 - Lancer | |

Mower Frame Group - without Height Adjustment

REF NO	PART NO.	QTY.	DESCRIPTION
1	1722952SM	2	SPACER
2	1923161SM	2	CAPSCREW, Hex Head, 1/2-13 x 4-1/2, Black
3	1721878SM	2	BRACKET & SHAFT ASSEMBLY
4	2860202SM	2	WASHER, 3/4, Black
5	1666001SM	4	BUSHING
6	1704314SM	2	FITTING, Lube
7	1686984SM	1	FRAME ASSEMBLY
8	1920415SM	2	CAPSCREW, Hex Head, 3/8-16 x 1-1/4, Black
9	2154177SM	2	SPACER
10	1928352SM	2	NUT, Hex Flange Lock, 3/8-16, Black
11	2118053SM	2	PIN, Round Head, Drilled, 3/8 x 2, Black
12	1960074SM	4	CLIP, Hair Pin, Black
13	1722951SM	2	WHEEL, Caster
14	1724107SM	2	PIN, Clevis, Black
15	1918452SM	2	PIN, Cotter, 1/4 x 2, Black
16	1960379SM	2	NUT, Hex Lock Light, 1/2-13, Black

Footnotes

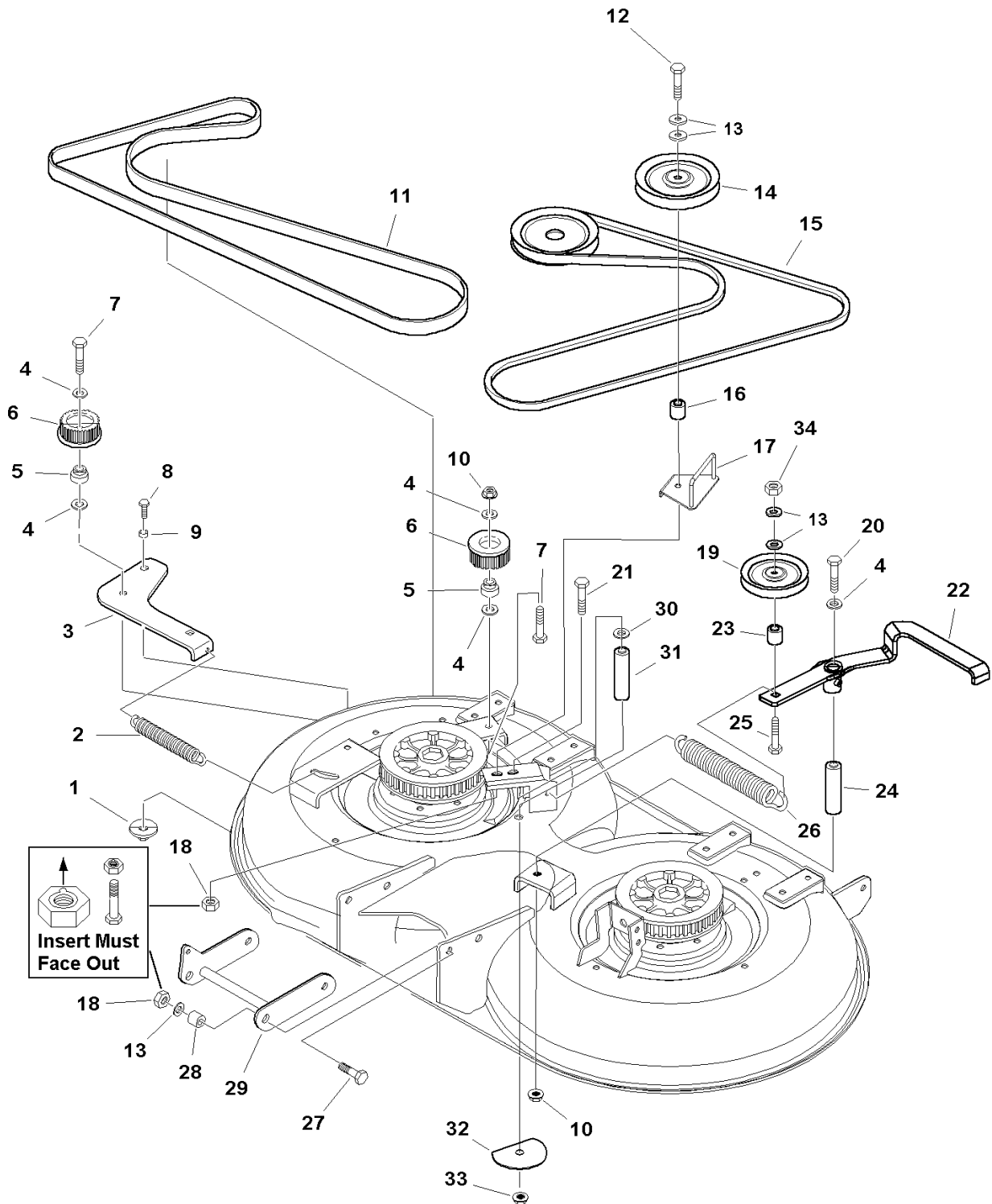
The above parts group applies to the following Mfg. Nos.:

1694106 - Lancer	1694320 - 4417	2690051 - 4417
1694255 - 4416	1694348 - 4416	
1694292 - Lancer	2690020 - Lancer	
1694294 - 4417	2690021 - 4417	
1694317 - Lancer	2690023 - 4416	
1694319 - 4416	2690050 - Lancer	

40" Mower Deck - Belt, Idler Arm & Hitch

985959

NOTE: Unless noted otherwise,
use the standard hardware torque
specification chart.



The above parts group applies to the following Mfg. Nos.:

- 1694109 - 40" Mower
- 1694257 - 40" Mower
- 1694297 - 40" Mower
- 1694298 - 40" Mower
- 2690023 - 4416

40" Mower Deck - Belt, Idler Arm & Hitch

REF NO	PART NO.	QTY.	DESCRIPTION
1	1721425SM	1	WASHER & LOCK NUT ASSEMBLY
2	1674671SM	1	SPRING, Extension, 3/4
3	1726387	1	ARM, Idler
4	1922755SM	7	WASHER, 3/8, Black
5	1719221SM	2	HUB
6	1719562SM	2	PULLEY, Idler, 56 Tooth
7	1923701SM	2	CAPSCREW, Hex Head, 3/8-16 x 2
8	1930601SM	1	CAPSCREW, Hex Head, 5/16-18 x 5/8, Black
9	1666697SM	1	SPACER
10	1928352SM	2	NUT, Hex Flange Whiz Lock, 3/8-16, Black
11	1721118SM	1	BELT, Timming, 56 Tooth
12	1960315SM	1	CARRIAGE BOLT, 3/8-16 x 2, Black
13	1924940SM	6	WASHER, 3/8, Black
14	1725408SM	1	PULLEY, Idler
15	1719746SM	1	BELT, Arbor Drive
16	1667812SM	1	SPACER
17	1722960SM	1	PLATE & ROD ASSEMBLY
18	2860681SM	3	NUT, Hex Lock Aluminum Insert, 3/8-16
19	1723952SM	1	PULLEY, Idler
20	1928957SM	1	CAPSCREW, Hex Head, 3/8-16 x 2-3/4, Black
21	1960653SM	1	CAPSCREW, Hex Head, 3/8-16 x 3-3/4, Black
22	1724646SM	1	ARM ASSEMBLY, w/Bushungs & Lube Fitting
23	1667811SM	1	SPACER
24	1657242SM	1	SPACER
25	1922606SM	1	CAPSCREW, Hex Head, 3/8-16 x 1-3/4, GR 8, Black
26	1715435SM	1	SPRING, Extension, 6" Long, Black
27	1921969SM	2	CAPSCREW, Hex Head, 3/8-16 x 1-1/2, Black
28	2157081SM	2	SPACER
29	1722040ASM	1	HITCH ASSEMBLY, 40" Front Cut
30	1924940SM	1	WASHER, Balck
31	1724151SM	1	SPACER
32	1724152SM	1	WASHER, Special, Black
33	1930645SM	1	NUT, Hex Flange Two Way Lock, 3/8-16, Black
34	1919439SM	1	NUT, Hex Flange Lock, 3/8-16, Black

Footnotes

The above parts group applies to the following Mfg. Nos.:

1694109 - 40" Mower
1694257 - 40" Mower
1694297 - 40" Mower
1694298 - 40" Mower
2690023 - 4416

40" Mower Deck - Belt, Idler Arm & Hitch

REF NO	PART NO.	QTY.	DESCRIPTION
1	1721425SM	1	WASHER & LOCK NUT ASSEMBLY
2	1674671SM	1	SPRING, Extension, 3/4
3	1726387	1	ARM, Idler
4	1922755SM	7	WASHER, 3/8, Black
5	1719221SM	2	HUB
6	1731892SM	2	PULLEY, Idler, 38 Tooth
7	1960746SM	2	SCREW, Hex Flange Head, 3/8-16 x 2
8	1930601SM	1	CAPSCREW, Hex Head, 5/16-18 x 5/8, Black
9	1666697SM	1	SPACER
10	1928352SM	2	NUT, Hex Flange Whiz Lock, 3/8-16, Black
11	1724625SM	1	BELT, Timming, 38 Tooth
12	1960315SM	1	CARRIAGE BOLT, 3/8-16 x 2, Black
13	1924940SM	6	WASHER, 3/8, Black
14	1725408SM	1	PULLEY, Idler
15	1719746SM	1	BELT, Arbor Drive
16	1667812SM	1	SPACER
17	1724650A	1	PLATE & ROD ASSEMBLY
18	2860681SM	3	NUT, Hex Lock Aluminum Insert, 3/8-16
19	1723952SM	1	PULLEY, Idler
20	1928957SM	1	CAPSCREW, Hex Head, 3/8-16 x 2-3/4, Black
21	1663114SM	2	BUSHING
22	1724646SM	1	ARM ASSEMBLY, w/Bushings & Lube Fitting
23	1667811SM	1	SPACER
24	1657242SM	1	SPACER
25	1922606SM	1	CAPSCREW, Hex Head, 3/8-16 x 1-3/4, GR 8, Black
26	1715435SM	1	SPRING, Extension, 6" Long, Black
27	1921968SM	2	CAPSCREW, Hex Head, 3/8-16 x 1-3/8, Black
28	1732443SM	2	SPACER
29	1722040ASM	1	HITCH ASSEMBLY, 40" Front Cut
30	1919439SM	1	NUT, Hex Flange Lock, 3/8-16, Black

Footnotes

The above parts group applies to the following Mfg. Nos.:

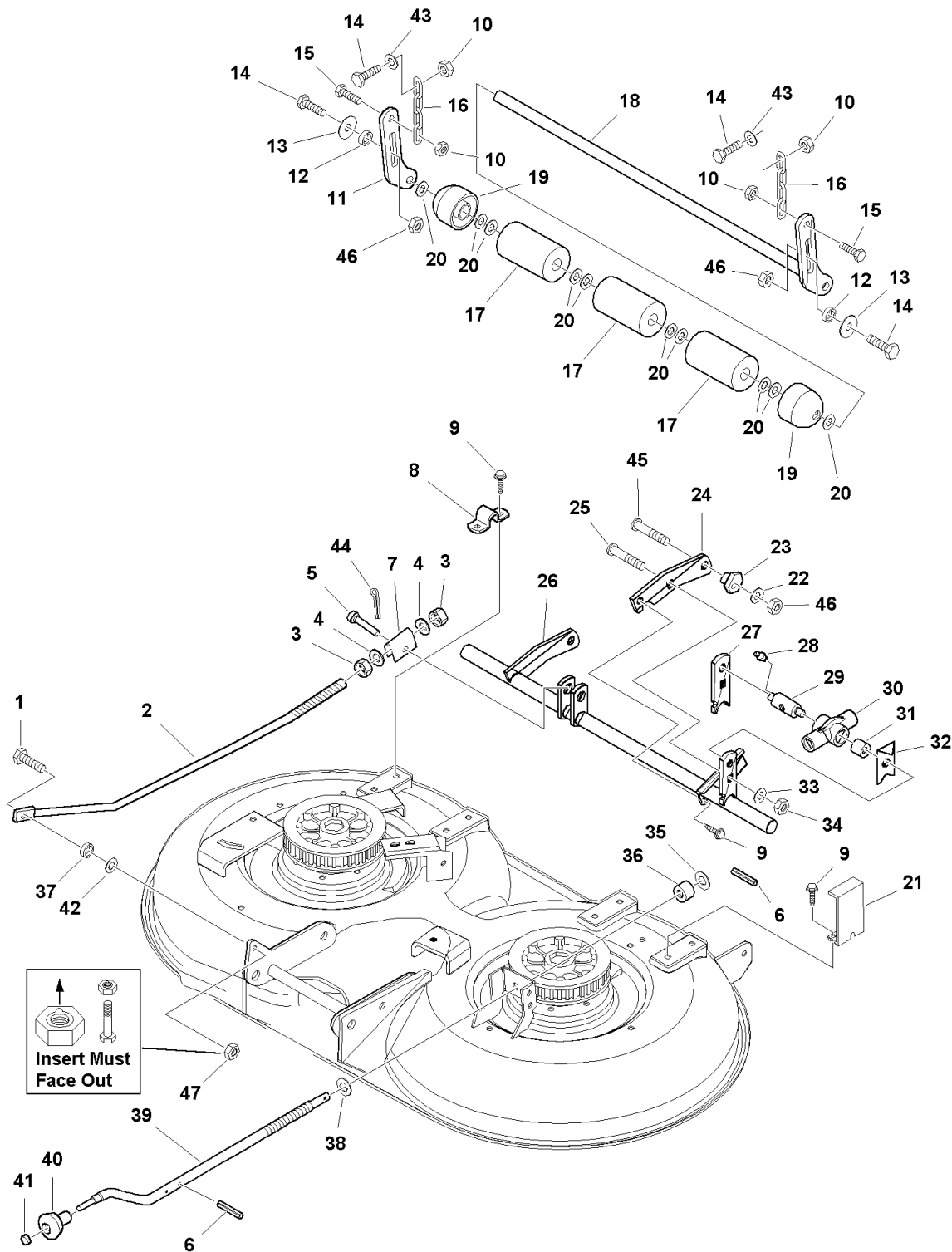
1694344 - 40" Mower

1694345 - 40" Mower

40" Mower Deck - Height Adjustment & Roller Bar

985960

NOTE: Unless noted otherwise,
use the standard hardware torque
specification chart.



The above parts group applies to the following Mfg. Nos.:

- 1694109 - 40" Mower 2690023 - 4416
- 1694257 - 40" Mower
- 1694297 - 40" Mower
- 1694298 - 40" Mower
- 1694344 - 40" Mower
- 1694345 - 40" Mower

40" Mower Deck - Height Adjustment & Roller Bar

REF NO	PART NO.	QTY.	DESCRIPTION
1	1922606SM	1	CAPSCREW, Hex Head, 3/8-16 x 1-3/4, GR 8, Black
2	1723900SM	1	ROD & STRAP ASSEMBLY
3	1915726SM	2	NUT, Hex, 5/8-11, Black
4	1924366SM	2	WASHER
5	2118053SM	1	PIN, Round Head, Drilled, 3/8 x 2, Black
6	2816001SM	3	PIN, Spring
7	1706645ASM	1	TRUNNION
8	1665374SM	3	STRAP
9	1664847SM	9	CAPSCREW, Hex Washer Head, Tap Tite, 5/16-18 x 3/4, Black
10	1960339SM	5	NUT, Hex Flange Lock, 3/8-16, Black
11	1723150ASM	1	BAR, Roller
12	1960236SM	2	SPACER
13	1960044SM	2	WASHER, 5/16, Black
14	1921969SM	4	CAPSCREW, Hex Head, 3/8-16 x 1-1/2, Black
15	1921977SM	2	CAPSCREW, Hex Head, 5/16-18 x 1-1/4, Black
16	1669241SM	2	CHAIN, Link, 5-5/8 Long, 4 Links
17	1668513SM	3	ROLLER, 5/8 ID x 2-1/2 OD x 4 Long
18	1722078A	1	SHAFT & BAR ASSEMBLY
19	1717675SM	2	ROLLER, 5/8 ID x 2-1/2 OD x 2 Long
20	1924366SM	12	WASHER, 5/8, Black
21	1723148A	1	PLATE, Indicator
22	1924874SM	1	WASHER, 5/16, Black
23	1714879SM	1	CAM, Eccentric
24	1722056SM	1	ARM
25	1960489SM	1	CARRIAGE BOLT, 1/2-13 x 2-1/2, Black
26	1722077SM	1	SHAFT ASSEMBLY, Rocker
27	1722978ASM	1	ARM
28	1704314SM	1	FITTING, Lube
29	1715892SM	1	TRUNNION
30	1716424SM	1	COVER, Rod
31	1679166SM	1	SPACER
32	1723147A	1	POINTER, Height of Cut
33	1916966SM	1	LOCKWASHER, 1/2, Black
34	1916951SM	1	NUT, Hex, 1/2-13, Black
35	2860171SM	1	WASHER, Special, Nylon
36	1715891SM	1	BEARING, Thrust
37	1706644SM	1	SPACER
38	1960035SM	1	WASHER, 5/8, Black
39	1723153SM	1	CRANK, Height of Cut
40	1714084SM	1	KNOB, Spinner
41	1960093SM	1	NUT, Push, 3/8
42	1924940SM	1	WASHER, 3/8, Black
43	1922755SM	2	WASHER, 3/8
44	1918452SM	1	PIN, Cotter

Footnotes

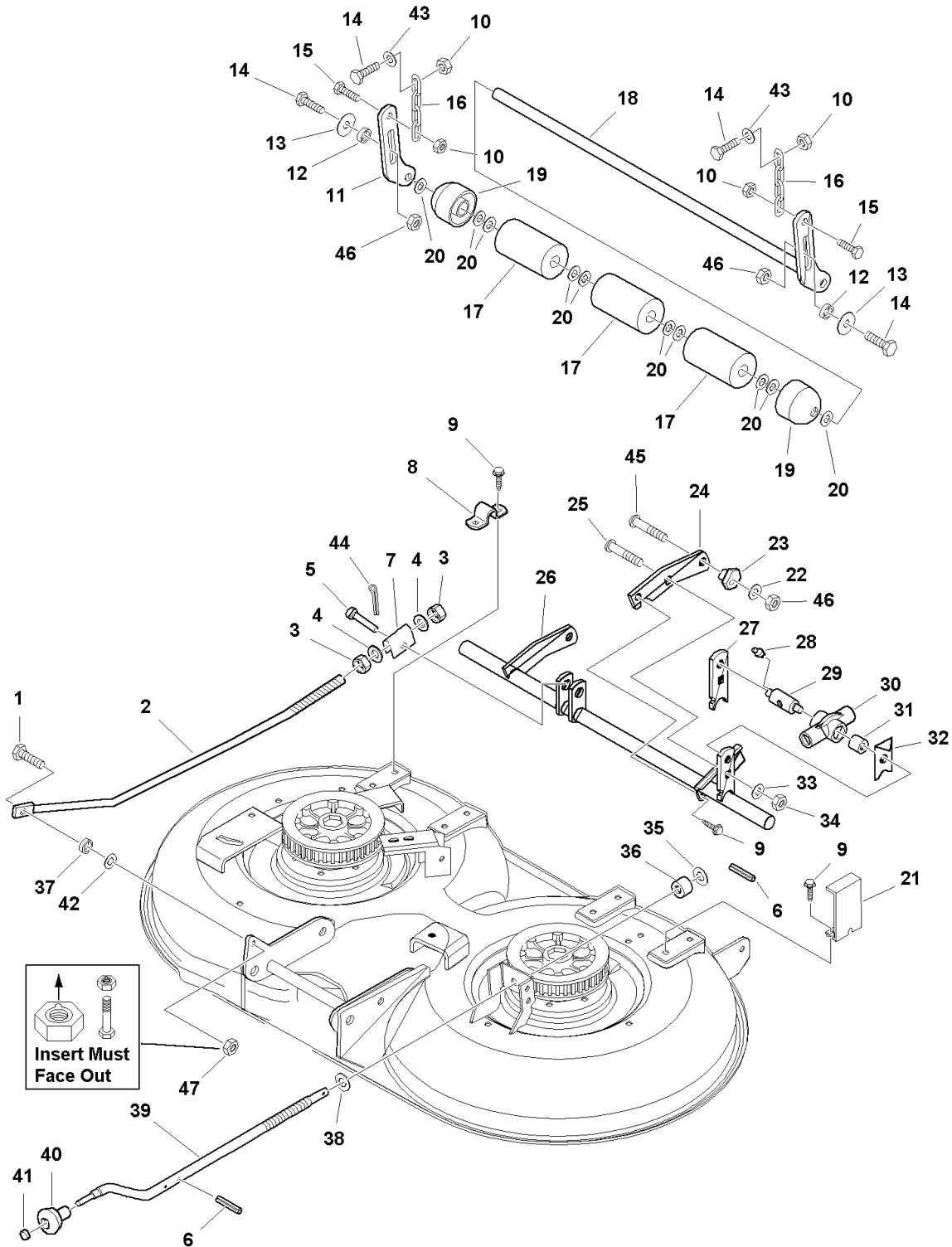
The above parts group applies to the following Mfg. Nos.:

1694109 - 40" Mower
 1694257 - 40" Mower
 1694297 - 40" Mower
 1694298 - 40" Mower
 1694344 - 40" Mower
 1694345 - 40" Mower

40" Mower Deck - Height Adjustment & Roller Bar

985960

NOTE: Unless noted otherwise,
use the standard hardware torque
specification chart.



The above parts group applies to the following Mfg. Nos.:

- 1694109 - 40" Mower 2690023 - 4416
- 1694257 - 40" Mower
- 1694297 - 40" Mower
- 1694298 - 40" Mower
- 1694344 - 40" Mower
- 1694345 - 40" Mower

40" Mower Deck - Height Adjustment & Roller Bar

REF NO	PART NO.	QTY.	DESCRIPTION
45	1960655SM	1	CARRIAGE BOLT, 5/16-18 x 1-1/4
46	2860643SM	3	NUT, Hex Lock, 3/8-16
47	2860681SM	1	NUT, Hex Lock, Aluminum Insert, 3/8-16

Footnotes

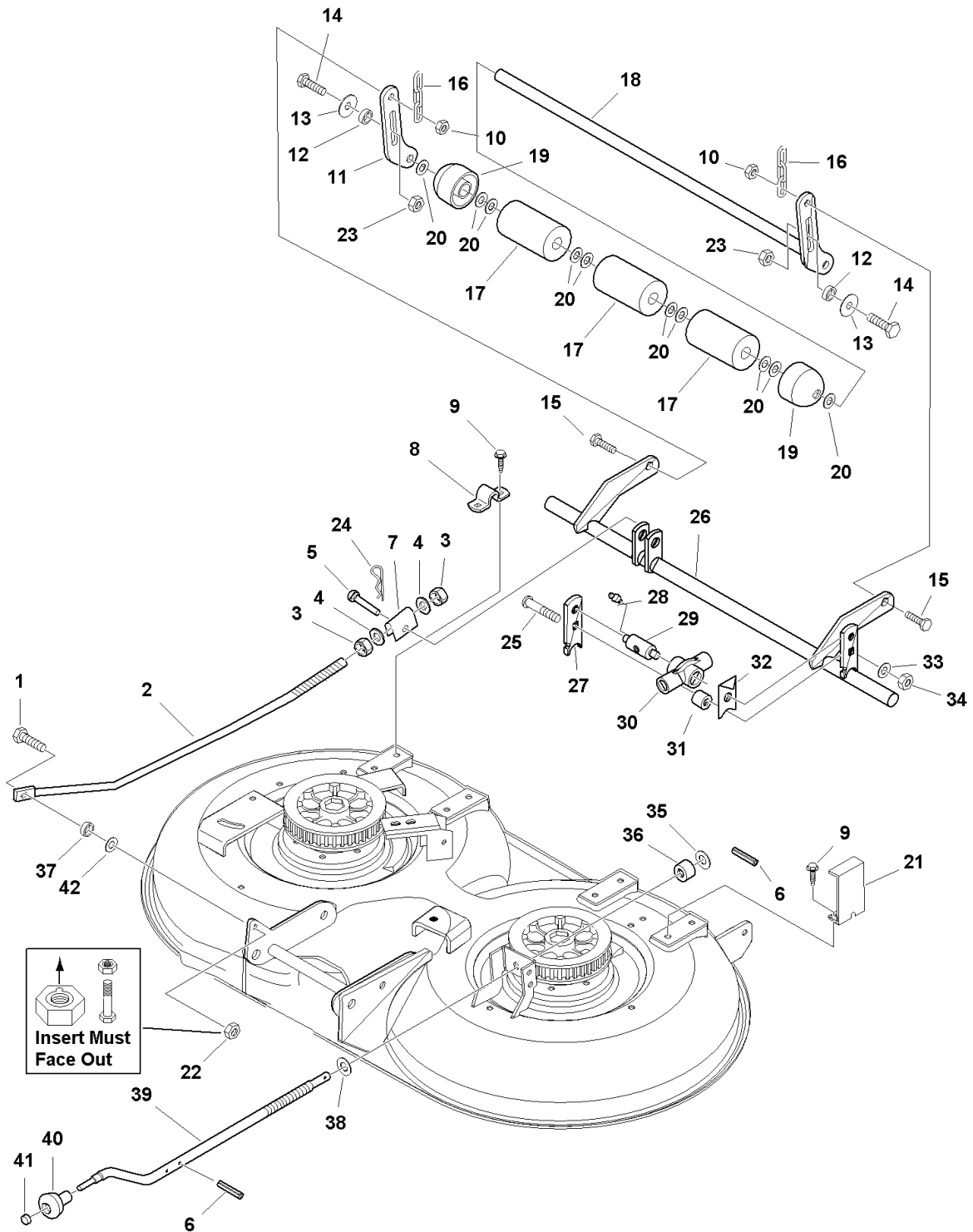
The above parts group applies to the following Mfg. Nos.:

1694109 - 40" Mower 2690023 - 4416
1694257 - 40" Mower
1694297 - 40" Mower
1694298 - 40" Mower
1694344 - 40" Mower
1694345 - 40" Mower

40" Mower Deck - Height Adjustment & Roller Bar (Later)

SL985960

NOTE: Unless noted otherwise,
use the standard hardware torque
specification chart.



The above parts group applies to the following Mfg. Nos.:

1694298 - 40" Mower
1694344 - 40" Mower
1694345 - 40" Mower
2690023 - 4416

40" Mower Deck - Height Adjustment & Roller Bar (Later)

REF NO	PART NO.	QTY.	DESCRIPTION
1	1923701SM	1	CAPSCREW, Hex Head, 3/8-16 x 2, GR 8, Black
2	1723900SM	1	ROD & STRAP ASSEMBLY
3	1915726SM	2	NUT, Hex, 5/8-11, Black
4	1924366SM	2	WASHER
5	2118053SM	1	PIN, Round Head, Drilled, 3/8 x 2, Black
6	2816001SM	3	PIN, Spring
7	1706645ASM	1	TRUNNION
8	1665374SM	3	STRAP
9	1664847SM	9	CAPSCREW, Hex Washer Head, Tap Tite, 5/16-18 x 3/4, Black
10	1960339SM	3	NUT, Hex Flange Lock, 3/8-16, Black
11	1723150ASM	1	BAR, Roller
12	1960236SM	2	SPACER
13	1960044SM	2	WASHER, 5/16, Black
14	1921969SM	2	CAPSCREW, Hex Head, 3/8-16 x 1-1/2, Black
15	1921977SM	2	CAPSCREW, Hex Head, 5/16-18 x 1-1/4, Black
16	1656835A	2	CHAIN, Link, 3 Links
17	1668513SM	3	ROLLER, 5/8 ID x 2-1/2 OD x 4 Long
18	1722078A	1	SHAFT & BAR ASSEMBLY
19	1717675SM	2	ROLLER, 5/8 ID x 2-1/2 OD x 2 Long
20	1924366SM	12	WASHER, 5/8, Black
21	1723148A	1	PLATE, Indicator
22	2860681SM	1	NUT, Hex Lock, Aluminum Insert, 3/8-16
23	2860643SM	3	NUT, Hex Lock, 3/8-16
24	1960074SM	1	PIN, Hair
25	1960489SM	1	CARRIAGE BOLT, 1/2-13 x 2-1/2, Black
26	1724970A	1	SHAFT ASSEMBLY, Rocker
27	1722978ASM	1	ARM
28	1704314SM	1	FITTING, Lube
29	1715892SM	1	TRUNNION
30	1716424SM	1	COVER, Rod
31	1679166SM	1	SPACER
32	1723147A	1	POINTER, Height of Cut
33	1916966SM	1	LOCKWASHER, 1/2, Black
34	1916951SM	1	NUT, Hex, 1/2-13, Black
35	2860171SM	1	WASHER, Special, Nylon
36	1715891SM	1	BEARING, Thrust
37	1706644SM	1	SPACER
38	1960035SM	1	WASHER, 5/8, Black
39	1723153SM	1	CRANK, Height of Cut
40	1714084SM	1	KNOB, Spinner
41	1960093SM	1	NUT, Push, 3/8
42	1924940SM	1	WASHER, 3/8, Black

Footnotes

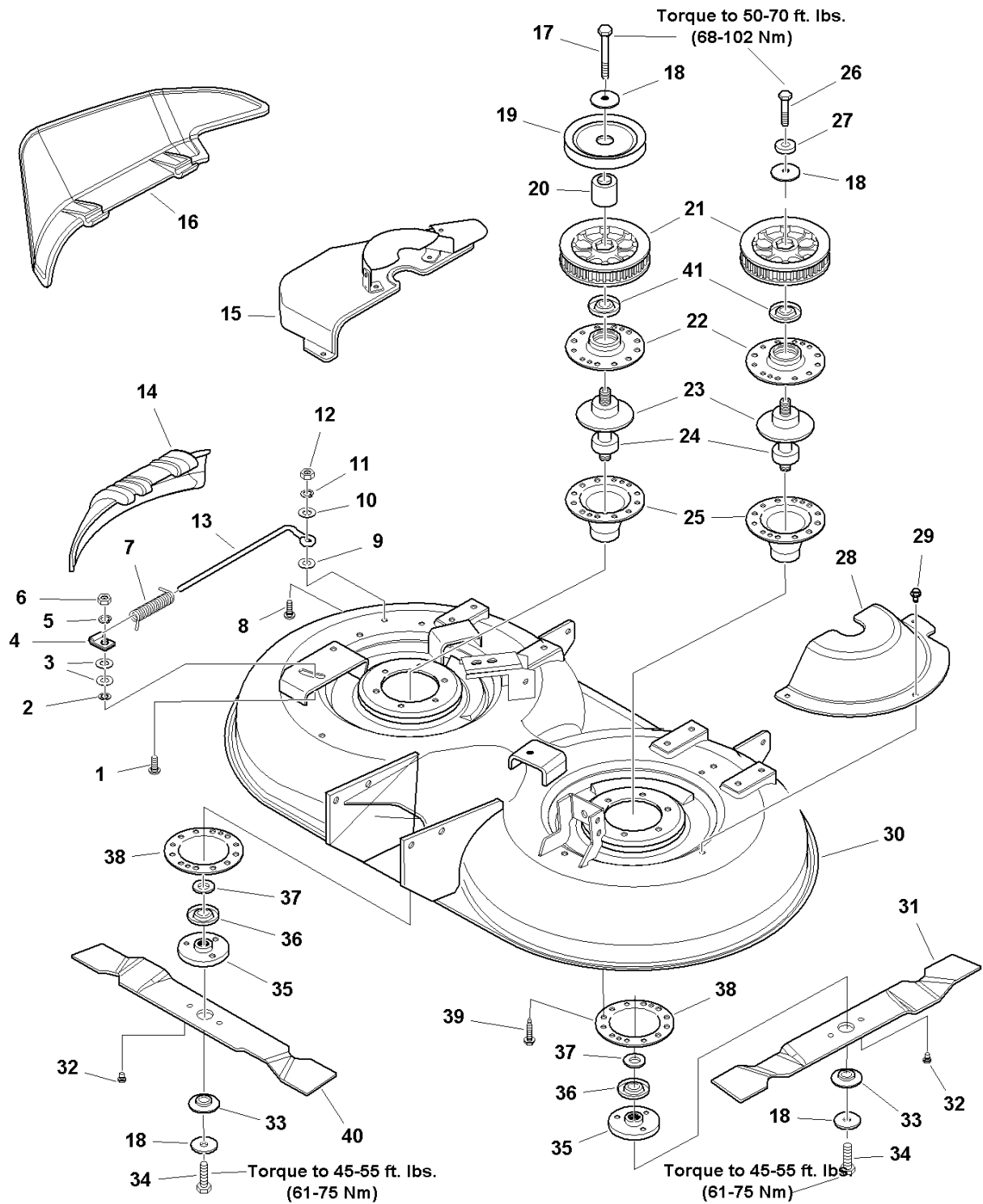
The above parts group applies to the following Mfg. Nos.:

1694298 - 40" Mower
1694344 - 40" Mower
1694345 - 40" Mower
2690023 - 4416

40" Mower Deck - Housing, Arbors & Blades

985958

NOTE: Unless noted otherwise,
use the standard hardware torque
specification chart.



The above parts group applies to the following Mfg. Nos.:

- 1694109 - 40" Mower
- 1694257 - 40" Mower
- 1694297 - 40" Mower

40" Mower Deck - Housing, Arbors & Blades

REF NO	PART NO.	QTY.	DESCRIPTION
1	1931318SM	1	CARRIAGE BOLT, 1/4-20 x 7/8, Black
2	1960518SM	1	NUT, Push, 1/4, Black
3	1960353SM	2	WASHER, 1/4, Black
4	1704873SM	1	CLAMP, Wire, Black
5	1916964SM	1	LOCKWASHER, 1/4, Black
6	1916622SM	1	NUT, Hex, 1/4-10, Black
7	1723938SM	1	SPRING, Torsion, Black
8	1931335SM	1	CARRIAGE BOLT, 5/16-18 x 1, Black
9	1933988SM	1	NUT, Push, 5/16, Black
10	1919381SM	1	WASHER, 5/16, Black
11	1917356SM	1	LOCKWASHER, 5/16, Black
12	1917372SM	1	NUT, Hex, 5/16, Black
13	1719617SM	1	ROD
14	1719597SM	1	DOOR, Mulching
15	1721155SM	1	COVER ASSEMBLY, RH
16	1720600SM	1	DEFLECTOR, Discharge
17	2860644SM	1	CAPSCREW, Hex Head, 7/16-14 x 4-1/2, GR8, Black
18	1656916SM	4	WASHER, Spring, 7/16, Black
19	1713091SM	1	PULLEY, 5" OD x 1" ID
20	1719870SM	1	HUB
21	1719766SM	2	SPROCKET & FLANGE ASSEMBLY
22	1655729ASM	2	HOUSING, Arbor, Top
23	1707335SM	2	GASKET, Foam
24	1722396SM	2	ARBOR SHAFT & BEARINGS ASSEMBLY
25	1703273ASM	2	HOUSING, Arbor, Bottom, w/Lube Fitting
26	1930584SM	1	CAPSCREW, Hex Head, 7/16-14 x 2-3/4, GR 8, Black
27	1933263SM	1	WASHER, 7/16, Black
28	1724601SM	1	COVER, Arbor, LH, Black
29	1924856SM	3	CAPSCREW, Hex Washer Head, Tap Tite, 5/16-18 x 1/2, Black
30	1686977SM	1	HOUSING ASSEMBLY
31	1719624ASM	1	BLADE, Mower, 20-3/8, LH
32	1722258SM	2	PIN, Blade
33	1722257SM	2	WASHER, Spline
34	2827120SM	2	CAPSCREW, Hex Head, 7/16-14 x 1-1/4, GR 8
35	1655777SM	2	ADAPTER, Blade
36	1700229SM	2	SHIELD, Bearing
37	1700230SM	2	WASHER, Shim, Black
38	1677274ASM	2	ADAPTER, Arbor
39	1960373SM	12	CAPSCREW, Hex Head, 5/16-18 x 1, Black
40	1719623ASM	1	BLADE, Mower, 20-3/8, RH
41	1657969SM	2	SHIELD, Bearing Upper, Arbor

Footnotes

The above parts group applies to the following Mfg. Nos.:

1694109 - 40" Mower

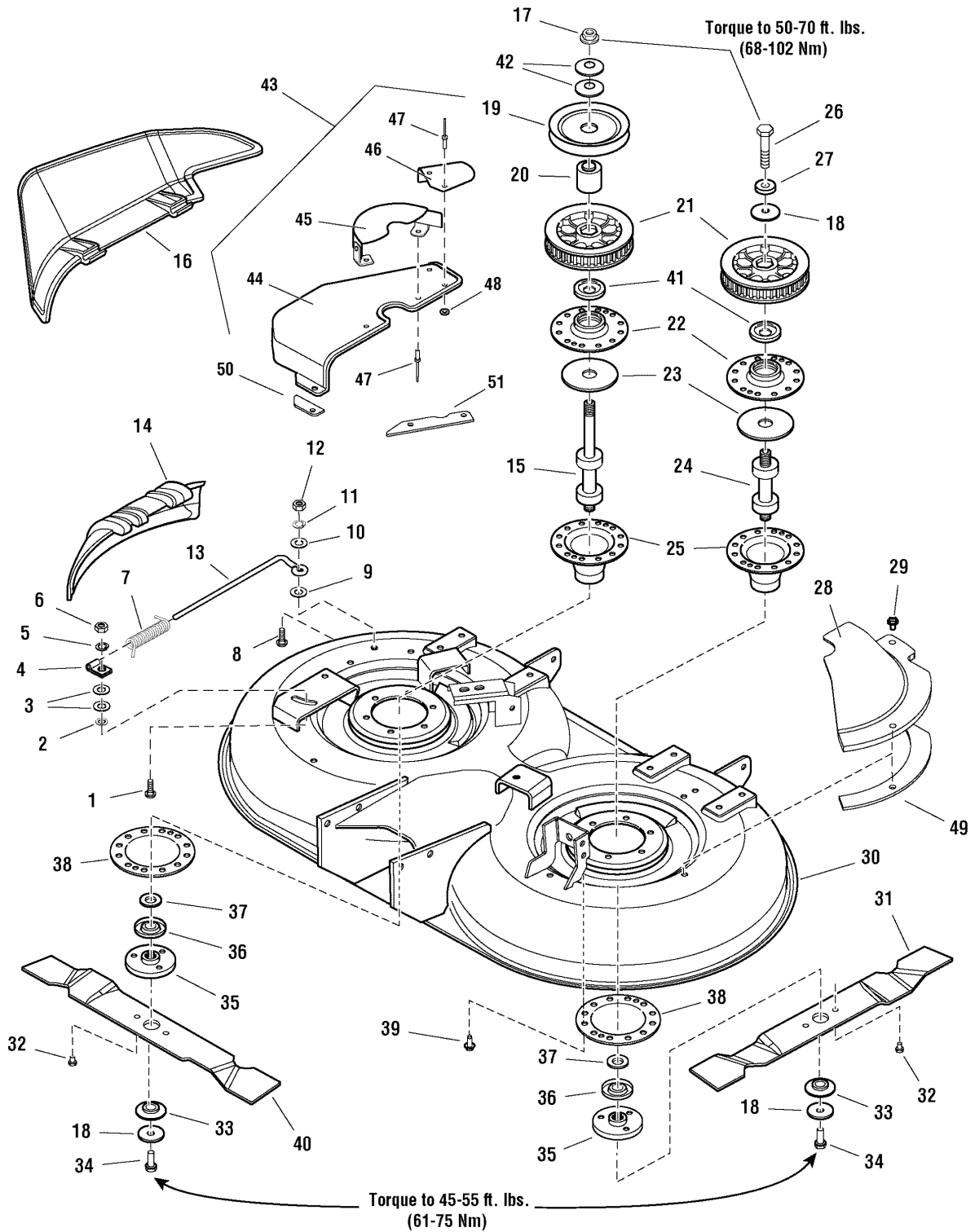
1694257 - 40" Mower

1694297 - 40" Mower

40" Mower Deck - Housing, Arbors & Blades

986259

NOTE: Unless noted otherwise,
use the standard hardware torque
specification chart.



The above parts group applies to the following Mfg. Nos.:

- 1694298 - 40" Mower
- 1694344 - 40" Mower
- 1694345 - 40" Mower
- 2690023 - 4416

40" Mower Deck - Housing, Arbors & Blades

REF NO	PART NO.	QTY.	DESCRIPTION
1	1931318SM	1	CARRIAGE BOLT, 1/4-20 x 7/8, Black
2	1960518SM	1	NUT, Push, 1/4, Black
3	1960353SM	2	WASHER, 1/4, Black
4	1704873SM	1	CLAMP, Wire, Black
5	1916964SM	1	LOCKWASHER, 1/4, Black
6	1916622SM	1	NUT, Hex, 1/4-10, Black
7	1723938SM	1	SPRING, Torsion, Black
8	1931335SM	1	CARRIAGE BOLT, 5/16-18 x 1, Black
9	1933988SM	1	NUT, Push, 5/16, Black
10	1919381SM	1	WASHER, 5/16, Black
11	1917356SM	1	LOCKWASHER, 5/16, Black
12	1917372SM	1	NUT, Hex, 5/16, Black
13	1719617SM	1	ROD
14	1719597SM	1	DOOR, Mulching
15	1726825SM	1	ARBOR SHAFT & BEARING ASSEMBLY
16	1720600SM	1	DEFLECTOR, Discharge
17	1714419SM	1	NUT, Hex Flange, 9/16-18
18	1656916SM	3	WASHER, Spring, 7/16, Black
19	1713091SM	1	PULLEY, 5" OD x 1" ID
20	1719870SM	1	HUB
21	1687229SM	2	SPROCKET & FLANGE ASSEMBLY, 38 Tooth, w/Screws
22	1655729ASM	2	HOUSING, Arbor, Top
23	1707335SM	2	GASKET, Foam
24	1722396SM	1	ARBOR SHAFT & BEARINGS ASSEMBLY
25	1703273ASM	2	HOUSING, Arbor, Bottom, w/Lube Fitting
26	1930584SM	1	CAPSCREW, Hex Head, 7/16-14 x 2-3/4, GR 8, Black
27	1933263SM	1	WASHER, 7/16, Black
28	1724601SM	1	COVER, Arbor, LH, Black
29	1664847SM	6	CAPSCREW, Hex Washer Head, Tap Tite, 5/16-18 x 3/4, Black
30	1686977SM	1	HOUSING ASSEMBLY (Orange)
30	1687315SM	1	HOUSING ASSEMBLY (Red)
31	1719624ASM	1	BLADE, Mower, 20-3/8, LH
32	1722258SM	2	PIN, Blade
33	1722257SM	2	WASHER, Spline
34	2827120SM	2	CAPSCREW, Hex Head, 7/16-14 x 1-1/4, GR 8
35	1655777SM	2	ADAPTER, Blade
36	1700229SM	2	SHIELD, Bearing
37	1700230SM	2	WASHER, Shim, Black
38	1677274ASM	2	ADAPTER, Arbor
39	1960373SM	12	CAPSCREW, Hex Head, 5/16-18 x 1, Black
40	1719623ASM	1	BLADE, Mower, 20-3/8, RH
41	1657969SM	2	SHIELD, Bearing Upper, Arbor
42	1713675SM	2	WASHER, Bellville
43	1721155SM	1	COVER ASSEMBLY, Arbor, RH (Includes Ref. Nos. 43 thru 48)

Footnotes

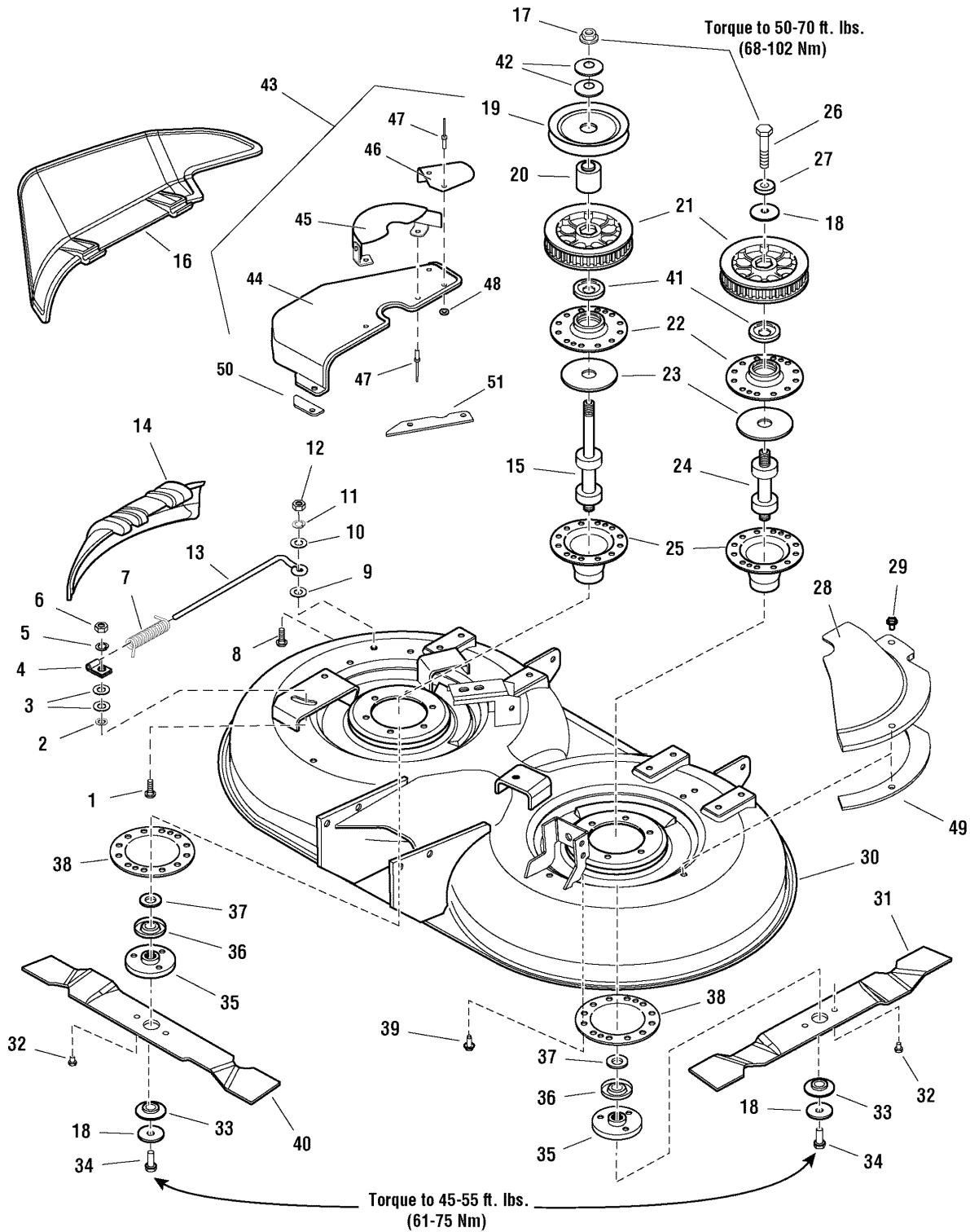
The above parts group applies to the following Mfg. Nos.:

1694298 - 40" Mower
 1694344 - 40" Mower
 1694345 - 40" Mower
 2690023 - 4416

40" Mower Deck - Housing, Arbors & Blades

986259

NOTE: Unless noted otherwise, use the standard hardware torque specification chart.



The above parts group applies to the following Mfg. Nos.:

- 1694298 - 40" Mower
- 1694344 - 40" Mower
- 1694345 - 40" Mower
- 2690023 - 4416

40" Mower Deck - Housing, Arbors & Blades

REF NO	PART NO.	QTY.	DESCRIPTION
44	1724600SM	1	COVER, Arbor RH
45	1721259ASM	1	GUARD ASSEMBLY, RH
46	1721132ASM	1	GUARD, Extension
47	1675044SM	1	RIVIT, Pop
48	1960096SM	4	WASHER, 3/16 x 3/4 x 1/16
49	1732964SM	1	SHIM-Cover LH 7GA 40" Mowers
50	1732963SM	1	SHIM-Cover RH 7GA 2.8 LG 40" Mowers
51	1732961SM	1	SHIM-Cover RH 7GA 6.5 LG 40" Mowers

Footnotes

The above parts group applies to the following Mfg. Nos.:

1694298 - 40" Mower
1694344 - 40" Mower
1694345 - 40" Mower
2690023 - 4416

44" Mower Deck - Belt, Idler Arm & Hitch

REF NO	PART NO.	QTY.	DESCRIPTION
1	1713549SM	1	V-BELT, Arbor Drive
2	1721532SM	1	V-BELT, Arbor Drive
3	1960339SM	4	NUT, Hex Flange Lock, 3/8-16
4	1724387SM	1	PULLEY, Idler
5	1924940SM	5	WASHER, 3/8
6	1718561SM	1	LEVER ASEMBLY, Idler, w/Bushings
7	1960268SM	1	CARRIAGE BOLT, 3/8-16 x 1-1/4, Black
9	1722040ASM	1	HITCH ASSEMBLY
10	1714062SM	1	SPRING, Extension, 8" Long
11	1724005SM	1	LEVER & HANDLE ASSEMBLY, w/Bushings
12	1667812SM	2	SPACER
13	2171247SM	1	PULLEY, Idler
14	1923903SM	1	CAPSCREW, Hex Head, 3/8-16 x 3, Black
15	1724178ASM	1	PLATE, Upstop
16	1923938SM	1	CAPSCREW, Hex Head, 3/8-16 x 3-1/2, Black
17	1706510SM	1	PULLEY, Idler
18	1676148SM	3	BUSHING
19	2812808SM	2	FITTING, Lube
20	1657242SM	1	SPACER
21	1667811SM	2	SPACER
22	1674669SM	1	SPACER
23	1703801SM	1	SPRING, Extension, 5-13/16" Long
24	1924356SM	3	WASHER, 3/8, Black
25	1921972SM	1	CAPSCREW, Hex Head, 3/8-16 x 2-1/2, Black
26	1921968SM	2	CAPSCREW, Hex Head, 3/8-16 x 1-3/8, Black
27	1723794A	1	BRACKET, "L"
28	1732443SM	2	SPACER
29	2860681SM	2	NUT, Hex Lock, Aluminum Insert, 3/8-16

Footnotes

The above parts group applies to the following Mfg. Nos.:

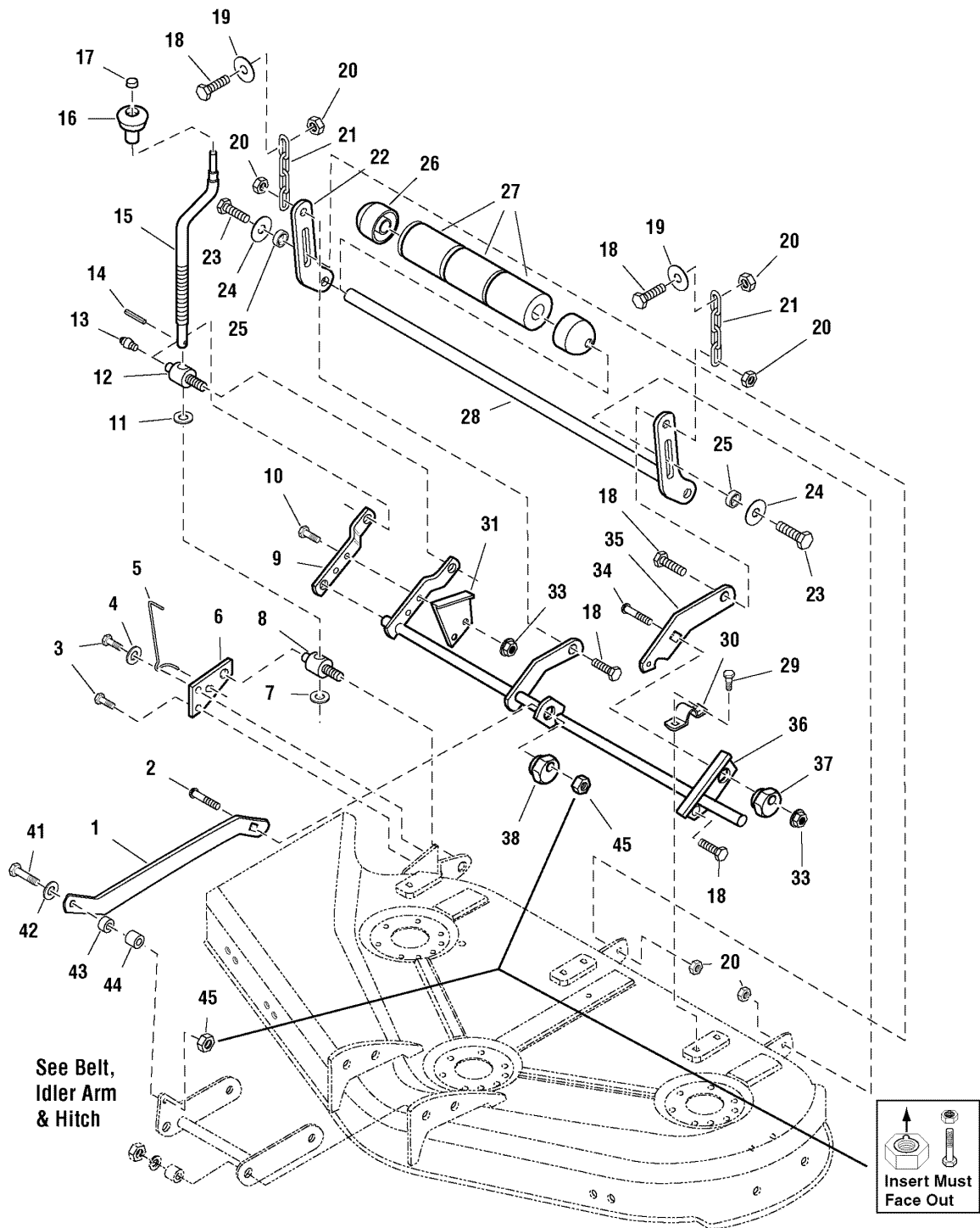
1694110 - 44" Mower
1694258 - 44" Mower
1694291 - 44" Mower
1694293 - 44" Mower
2690020 - Lancer
2690021 - 4417

2690050 - Lancer
2690051 - 4417

44" Mower Deck - Height Adjustment & Roller Bar

986161

NOTE: Unless noted otherwise,
use the standard hardware torque
specification chart.



The above parts group applies to the following Mfg. Nos.:

- | | |
|---------------------|------------------|
| 1694110 - 44" Mower | 2690050 - Lancer |
| 1694258 - 44" Mower | 2690051 - 4417 |
| 1694291 - 44" Mower | |
| 1694293 - 44" Mower | |
| 2690020 - Lancer | |
| 2690021 - 4417 | |

44" Mower Deck - Height Adjustment & Roller Bar

REF NO	PART NO.	QTY.	DESCRIPTION
1	1724833ASM	1	ARM,Pitch
2	1931352SM	1	CARRIAGE BOLT,3/8-16 x 1-1/2, Black
3	1931202SM	2	CAPSCREW, Hex Washer Head, Tap Tite, 5/16-18 x 1-1/4, Black
4	1919381SM	1	WASHER, 5/16, Black
5	1704114SM	1	ROD, Height of Cut
6	1704080ASM	1	PLATE
7	1704097SM	1	WASHER, Detent, Black
8	1724009SM	1	TRUNNION
9	1704083ASM	1	ARM
10	1921977SM	2	CAPSCREW, Hex Head, 5/16-18 x 1-1/4, Black
11	1960170SM	1	WASHER, 1/2, Black
12	1704087SM	1	TRUNNION
13	1704314SM	1	FITTING, Lube
14	2816001SM	1	PIN, Spring
15	1704094SM	1	CRANK, Height Adjustment, Black
16	1714084SM	1	KNOB, Spinner
17	1960093SM	1	NUT, Push, 3/8, Black
18	1921969SM	4	CAPSCREW, Hex Head, 3/8-16 x 1-1/2, Black
19	1924940SM	2	WASHER, 3/8, Black
20	1930645SM	6	NUT, Hex Flange Lock, 3/8-16, Black
21	1669241SM	2	CHAIN, Link, 5-5/8 Long, 4 Links
22	1723150ASM	1	BAR, Roller
23	1921977SM	2	CAPSCREW, Hex Head, 5/16-18 x 1-1/4, Black
24	1960044SM	2	WASHER, 5/16, Black
25	1960236SM	2	SPACER
26	1717675SM	2	ROLLER, Rounded, 5/8 ID x 2-1/2 OD x 2" Long
27	1668513SM	3	ROLLER, 5/8 ID x 2-1/2 OD x 4" Long
28	1722078A	1	SHAFT & BAR ASSEMBLY
29	1664847SM	7	CAPSCREW, Hex Washer Head, Tap Tite, 5/16-18 x 3/4, Black
30	1665374SM	3	STRAP
31	1704116ASM	1	BRACKET, Height of Cut
33	1931277SM	2	NUT, Hex, 5/16-18, Black, Whiz Lock Flange
34	1960655SM	1	CARRIGE BOLT, 5/16-18 x 1-1/4
35	1722056SM	1	ARM
36	1724010SM	1	SHAFT ASSEMBLY
37	1714879SM	1	CAM, Eccentric
38	1704082SM	1	NUT, Hex Adjusting
41	1923701SM	1	CAPSCREW, Hex Head, 3/8-16 x 1-3/4
42	1924940SM	1	WASHER
43	1611705SM	1	SPACER
44	1667812SM	1	SPACER
45	2860681SM	1	NUT, Hex, 3/8-16

Footnotes

The above parts group applies to the following Mfg. Nos.:

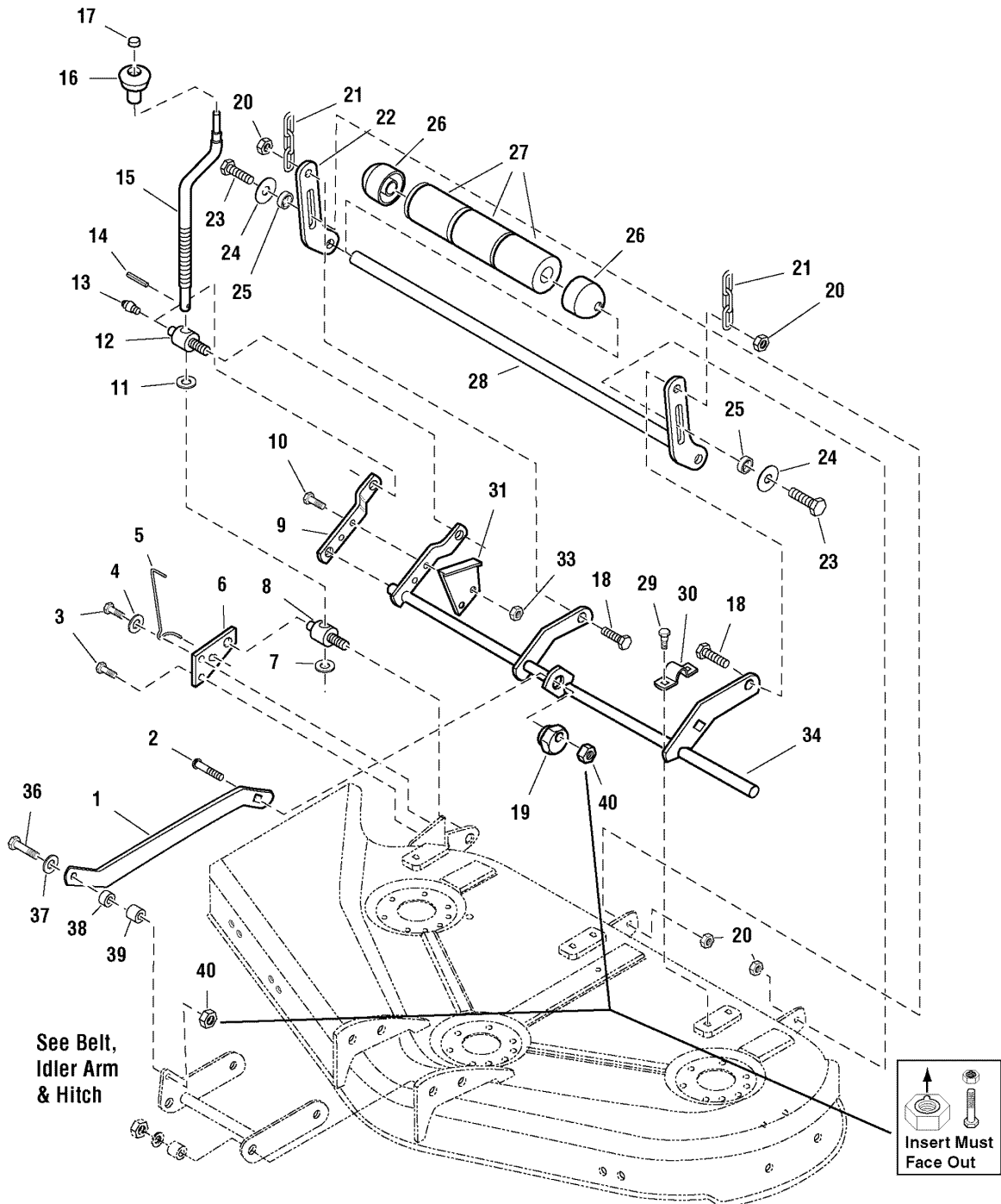
1694110 - 44" Mower
 1694258 - 44" Mower
 1694291 - 44" Mower
 1694293 - 44" Mower
 2690020 - Lancer
 2690021 - 4417

2690050 - Lancer
 2690051 - 4417

44" Mower Deck - Height Adjustment & Roller Bar (Later)

SL986161

NOTE: Unless noted otherwise,
use the standard hardware torque
specification chart.



The above parts group applies to the following Mfg. Nos.:

- | | |
|---------------------|------------------|
| 1694110 - 44" Mower | 2690050 - Lancer |
| 1694258 - 44" Mower | 2690051 - 4417 |
| 1694291 - 44" Mower | |
| 1694293 - 44" Mower | |
| 2690020 - Lancer | |
| 2690021 - 4417 | |

44" Mower Deck - Height Adjustment & Roller Bar (Later)

REF NO	PART NO.	QTY.	DESCRIPTION
1	1724833ASM	1	ARM,Pitch
2	1931352SM	1	CARRIAGE BOLT,3/8-16 x 1-1/2, Black
3	1931202SM	2	CAPSCREW, Hex Washer Head, Tap Tite, 5/16-18 x 1-1/4, Black
4	1919381SM	1	WASHER, 5/16, Black
5	1704114SM	1	ROD, Height of Cut
6	1704080ASM	1	PLATE
7	1704097SM	1	WASHER, Detent, Black
8	1724009SM	1	TRUNNION
9	1704083ASM	1	ARM
10	1921977SM	2	CAPSCREW, Hex Head, 5/16-18 x 1-1/4, Black
11	1960170SM	1	WASHER, 1/2, Black
12	1704087SM	1	TRUNNION
13	1704314SM	1	FITTING, Lube
14	2816001SM	1	PIN, Spring
15	1727681SM	1	CRANK, Height Adjustment, Black
16	1714084SM	1	KNOB, Spinner
17	1960093SM	1	NUT, Push, 3/8, Black
18	1921969SM	2	CAPSCREW, Hex Head, 3/8-16 x 1-1/2, Black
19	1704082SM	1	NUT, Hex Adjusting
20	1930645SM	6	NUT, Hex Flange Lock, 3/8-16, Black
21	1656835A	2	CHAIN, Link, 3 Links
22	1723150ASM	1	BAR, Roller
23	1921977SM	2	CAPSCREW, Hex Head, 5/16-18 x 1-1/4, Black
24	1960044SM	2	WASHER, 5/16, Black
25	1960236SM	2	SPACER
26	1717675SM	2	ROLLER, Rounded, 5/8 ID x 2-1/2 OD x 2" Long
27	1668513SM	3	ROLLER, 5/8 ID x 2-1/2 OD x 4" Long
28	1722078A	1	SHAFT & BAR ASSEMBLY
29	1664847SM	7	CAPSCREW, Hex Washer Head, Tap Tite, 5/16-18 x 3/4, Black
30	1665374SM	3	STRAP
31	1704116ASM	1	BRACKET, Height of Cut
33	1931277SM	2	NUT, Hex, 5/16-18, Whiz Lock Flange
34	1724968ASM	1	SHAFT ASSEMBLY
36	1923701SM	1	CAPSCREW, Hex Head, 3/8-16 x 1-3/4
37	1924940SM	1	WASHER
38	1611705SM	1	SPACER
39	1667812SM	1	SPACER
40	2860681SM	2	NUT, Hex, 3/8-16

Footnotes

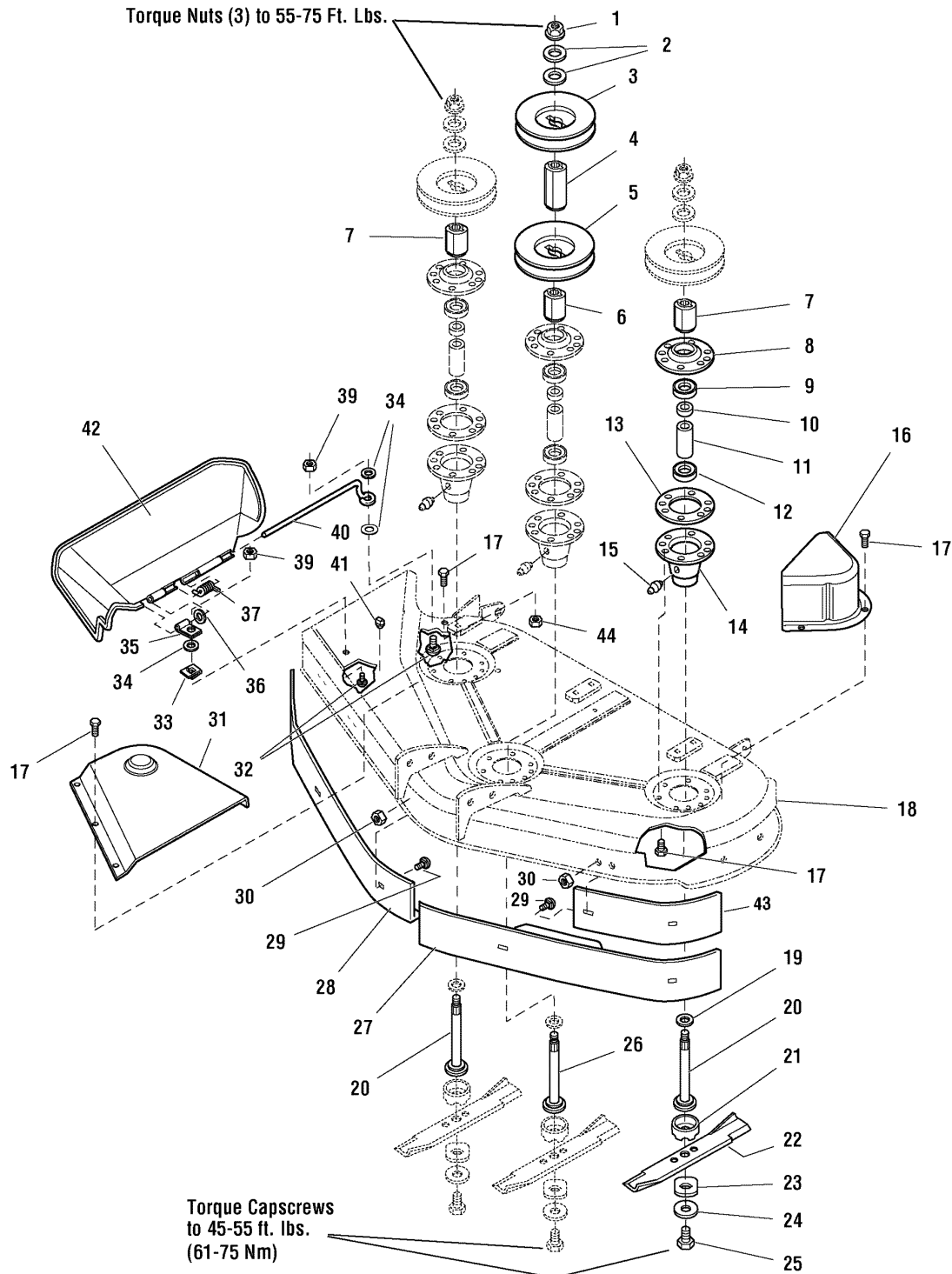
The above parts group applies to the following Mfg. Nos.:

1694110 - 44" Mower
 1694258 - 44" Mower
 1694291 - 44" Mower
 1694293 - 44" Mower
 2690020 - Lancer
 2690021 - 4417
 2690050 - Lancer
 2690051 - 4417

44" Mower Deck - Housing, Arbors & Blades

986159

NOTE: Unless noted otherwise,
use the standard hardware torque
specification chart.



The above parts group applies to the following Mfg. Nos.:

- | | |
|---------------------|------------------|
| 1694110 - 44" Mower | 2690050 - Lancer |
| 1694258 - 44" Mower | 2690051 - 4417 |
| 1694291 - 44" Mower | |
| 1694293 - 44" Mower | |
| 2690020 - Lancer | |
| 2690021 - 4417 | |

44" Mower Deck - Housing, Arbors & Blades

REF NO	PART NO.	QTY.	DESCRIPTION
1	1714419SM	3	NUT, Hex Flange, 9/16-18
2	1713675SM	6	WASHER, Bellville
3	1713161SM	1	PULLEY
4	1713158SM	1	HUB
5	1713098SM	3	PULLEY
6	1713533SM	1	HUB
7	1713197SM	2	HUB
8	1655729ASM	3	COVER, Arbor Housing
9	2108202SM	3	BEARING
10	1715724SM	3	SPACER
11	1732544SM	3	SPACER
12	1705897SM	3	BEARING
13	1707335SM	3	GASKET, Foam
14	1713338ASM	3	HOUSING ASSEMBLY, Arbor Bottom, w/Lube Fitting (Includes Ref. No. 15)
15	1704314SM	3	FITTING, Lube
16	1729666SM	1	COVER, Arbor
17	1664847SM	28	CAPSCREW, Hex Washer Head, Taptite, 5/16-18 x 3/4, Black
18	1686937SM	1	HOUSING ASSEMBLY, 44" Front Cut (Orange)
18	1687189SM	1	HOUSING ASSEMBLY, 44" Front Cut (Red)
19	1713619SM	3	WASHER, Cup
20	1713195SM	2	SHAFT
21	1713196SM	3	SHIELD, Grass
22	1704100ASM	3	BLADE, Mower, 16-1/8 (For 44" Deck)
23	1713089SM	3	WASHER, Hex, Special
24	1656916SM	3	WASHER, Black
25	2823471SM	3	CAPSCREW, Hex Head, 7/16-14 x 1-1/4, Black
26	1713612SM	1	SHAFT, Arbor
27	1716879ASM	1	BAFFLE, Anti-Blowout, LH (CE Only)
28	1716878ASM	1	BAFFLE, Anti-Blowout, RH (CE Only)
29	1931333SM	8	CARRIAGE BOLT, 5/16-18 x 3/4, Black (qty. 2 for Domestic)
30	1927557SM	8	NUT, Hex Flange Whiz Lock, 5/16-18, Black (qty. 2 for Domestic)
31	1703601SM	1	COVER, Arbor
32	1931318SM	2	CARRIAGE BOLT, 1/4-20 x 7/8, Black
33	1960518SM	2	NUT, Push, 1/4, Black
34	1960353SM	3	WASHER, 1/4, Black
35	1704873SM	1	CLAMP
36	1919326SM	1	WASHER, 5/16, Black
37	7101082SM	1	SPRING, Torsion
39	1920397SM	2	NUT, Hex, 1/4-20, Black, ESNA
40	1706709SM	1	ROD, Deflector, Front
41	1705115SM	1	PLUG, Hole
42	1705449SM	1	DEFLECTOR, Plastic
43	1724538ASM	1	BAFFLE, Anti Blowout, LH
44	1931277SM	1	NUT, Hex Whiz Lock, 5/16-18

Footnotes

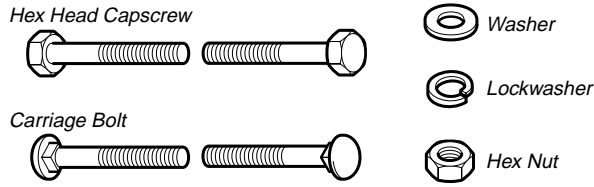
The above parts group applies to the following Mfg. Nos.:

1694110 - 44" Mower
 1694258 - 44" Mower
 1694291 - 44" Mower
 1694293 - 44" Mower
 2690020 - Lancer
 2690021 - 4417

2690050 - Lancer
 2690051 - 4417

Hardware Identification & Torque Specifications

Common Hardware Types

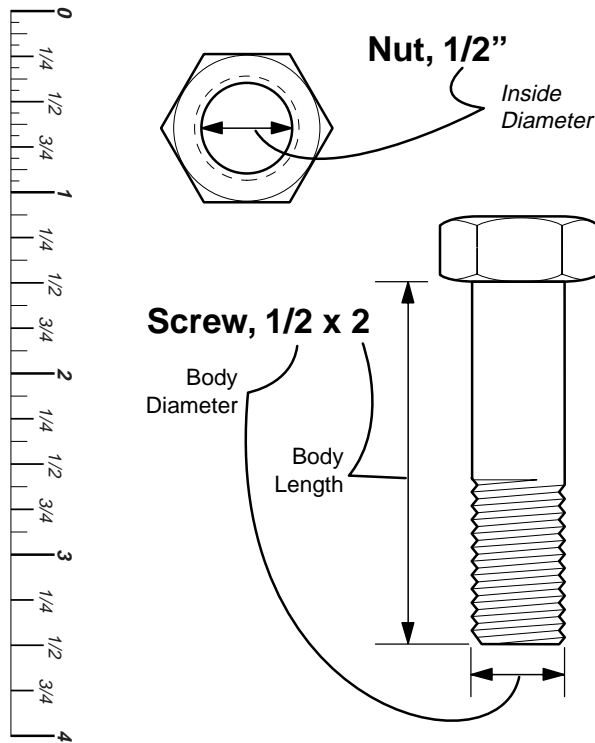


Standard Hardware Sizing

When a washer or nut is identified as **1/2"**, this is the *Nominal size*, meaning the *inside diameter* is 1/2 inch; if a second number is present it represents the *threads per inch*

When bolt or capscrew is identified as **1/2 - 16 x 2"**, this means the *Nominal size*, or *body diameter* is 1/2 inch; the second number represents the *threads per inch* (16 in this example, and the final number is the *body length* of the bolt or screw (in this example 2 inches long).

The guides and ruler furnished below are designed to help you select the appropriate hardware and tools.



Torque Specification Chart						
FOR STANDARD MACHINE HARDWARE (Tolerance ± 20%)						
Hardware Grade	No Marks SAE Grade 2		SAE Grade 5		SAE Grade 8	
	in/lbs ft/lbs	Nm.	in/lbs ft/lbs	Nm.	in/lbs ft/lbs	Nm.
8-32	19	2.1	30	3.4	41	4.6
8-36	20	2.3	31	3.5	43	4.9
10-24	27	3.1	43	4.9	60	6.8
10-32	31	3.5	49	5.5	68	7.7
1/4-20	66	7.6	8	10.9	12	16.3
1/4-28	76	8.6	10	13.6	14	19.0
5/16-18	11	15.0	17	23.1	25	34.0
5/16-24	12	16.3	19	25.8	27	34.0
3/8-16	20	27.2	30	40.8	45	61.2
3/8-24	23	31.3	35	47.6	50	68.0
7/16-14	30	40.8	50	68.0	70	95.2
7/16-20	35	47.6	55	74.8	80	108.8
1/2-13	50	68.0	75	102.0	110	149.6
1/2-20	55	74.8	90	122.4	120	163.2
9/16-12	65	88.4	110	149.6	150	204.0
9/16-18	75	102.0	120	163.2	170	231.2
5/8-11	90	122.4	150	204.0	220	299.2
5/8-18	100	136	180	244.8	240	326.4
3/4-10	160	217.6	260	353.6	386	525.0
3/4-16	180	244.8	300	408.0	420	571.2
7/8-9	140	190.4	400	544.0	600	816.0
7/8-14	155	210.8	440	598.4	660	897.6
1-8	220	299.2	580	788.8	900	1,244.0
1-12	240	326.4	640	870.4	1,000	1,360.0

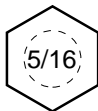
NOTES

- These torque values are to be used for all hardware excluding: locknuts, self-tapping screws, thread forming screws, sheet metal screws and socket head setscrews.
- Recommended seating torque values for locknuts:
 - for prevailing torque locknuts - use 65% of grade 5 torques.
 - for flange whizlock nuts and screws - use 135% of grade 5 torques.
- Unless otherwise noted on assembly drawings, all torque values must meet this specification.

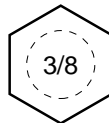
Wrench & Fastener Size Guide



1/4" Bolt or Nut
Wrench—7/16"



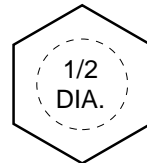
5/16" Bolt or Nut
Wrench—1/2"



3/8" Bolt or Nut
Wrench—9/16"



7/16" Bolt or Nut
Wrench (Bolt)—5/8"
Wrench (Nut)—11/16"



1/2" Bolt or Nut
Wrench—3/4"

Simplicity

MANUFACTURING, INC.
500 N. Spring Street / PO Box 997
Port Washington, WI 53074-0997 USA

www.simplicitymfg.com

Briggs and Stratton Yard Power Products Group
Copyright © 2007 by Briggs and Stratton Corporation
Milwaukee, WI, USA. All rights reserved

