



Parts Manual



Pacer

Series Transaxle Drive Walk-Behind Mower

13HP Tractors

Mfg. No.	Description
1694494	Pacer, 13HP Briggs & Stratton 34" Cut

Mower Decks

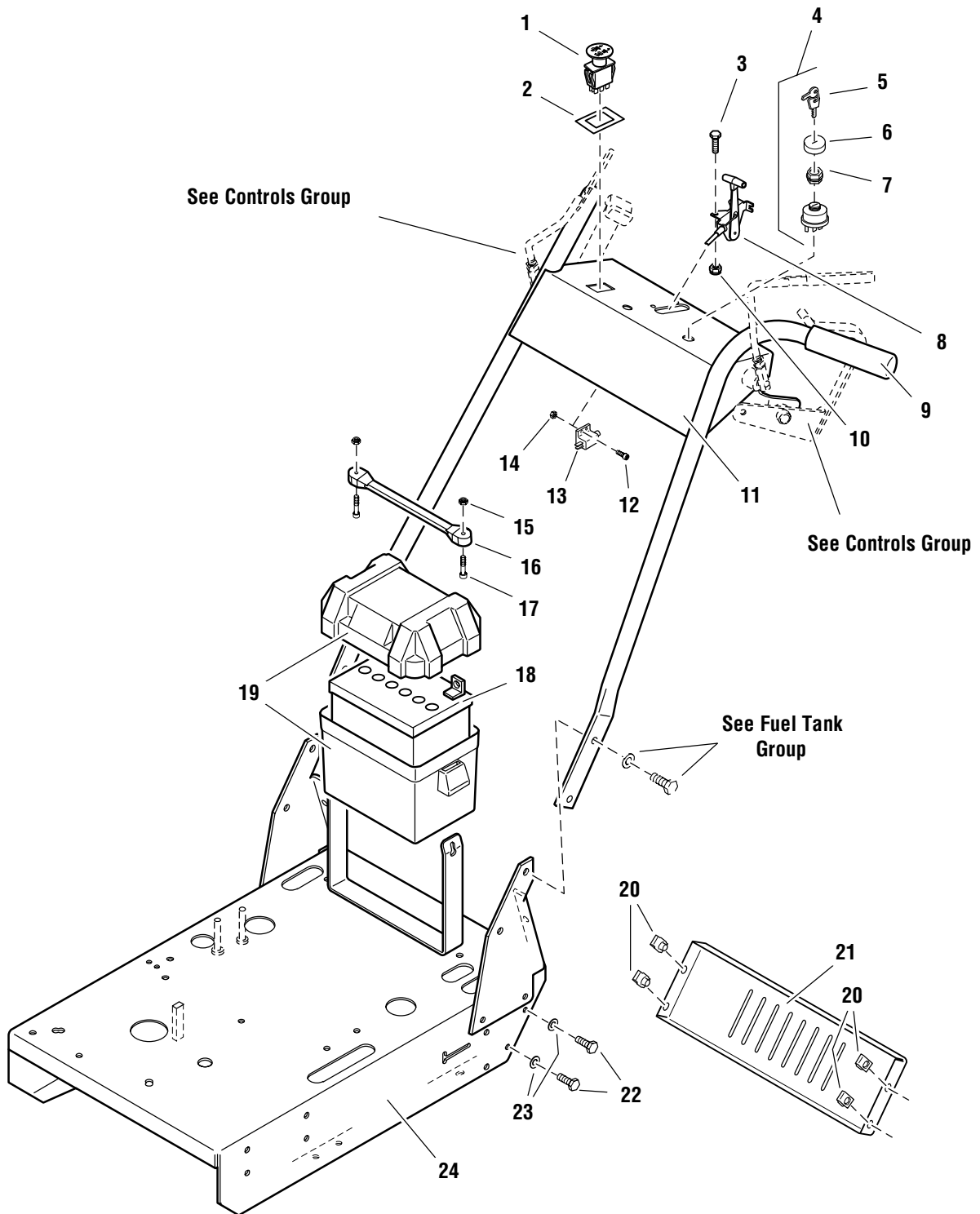
Mfg. No.	Description
1694287	34" Mower Deck

TRACTOR / MOWER DECK COMPONENTS	PAGES
Engine Deck & Handle Bars Group	4
Engine & PTO Group	6
Transaxle SERVICE PARTS	8
Transaxle, Mount & Drive Idler Group	10
Controls Group	12
Fuel Supply Group	14
Fuel Tank Group	16
Electrical Schematic	18
Wheel & Tire Group	20
Decals - Brand, Model, Safety & Instruction	22
34" Mower Deck - Housing, Arbors & Blades	24
34" Mower Deck - Frame, Caster & Shield	26
34" Mower Deck - Belt, Idler Arm & Hitch	28
34" Mower Deck - Height Adjustment & Roller Bar	30
34" Mower Deck - Grass Mulcher	34
Torque Specification Chart	Inside Back Cover

Engine Deck & Handle Bars Group

FI0000

NOTE: Unless noted otherwise,
use the standard hardware torque
specification chart.



The above parts group applies to the following Mfg. Nos.:
1694494 - Pacer

Engine Deck & Handle Bars Group

REF NO.	PART NO.	QTY.	DESCRIPTION
1	5022180	1	SWITCH, PTO
2	5022222	1	SWITCH RETAINER RING
3	50250106	2	CAPSCREW, Hex Head, 1/4-20 x 3/4
4	5020927	1	SWITCH, Ignition, Complete (includes Ref 5 - 7)
5	5022789	1	KEY, Ignition, Molded (set of 2)
6	5022790	1	COVER
7	5022791	1	PLASTIC NUT
8	5047629	1	CABLE, Throttle Control
9	5021841	2	FOAM GRIP
10	5025095	2	NUT, Hex Nylon Lock, 1/4-20
11	503847905	1	HANDLE BAR ASSEMBLY
12	50251794	2	SCREW, Phillips Head, #10-24 x 1/2
13	5021769	1	SWITCH, NC
14	5025029	2	NUT, Hex, #10-24
15	5025271	2	NUT, Hex Nylon Lock, #10-24
16	5021670	1	RUBBER STRAP
17	5025270	2	SCREW, Phillips Head, #10-24 x 1
18	1685215	1	BATTERY, 12Volt (340 CCA)
19	5046188	1	BATTERY BOX
20	5022308	4	BODY CLIP, 5/16-18
21	503847735	1	REAR SHIELD
22	50250116	4	CAPSCREW, Hex Head, 5/16-18 x 3/4
23	5025155	4	WASHER, 5/16
24	503848157	1	ENGINE DECK ASSEMBLY

Footnotes

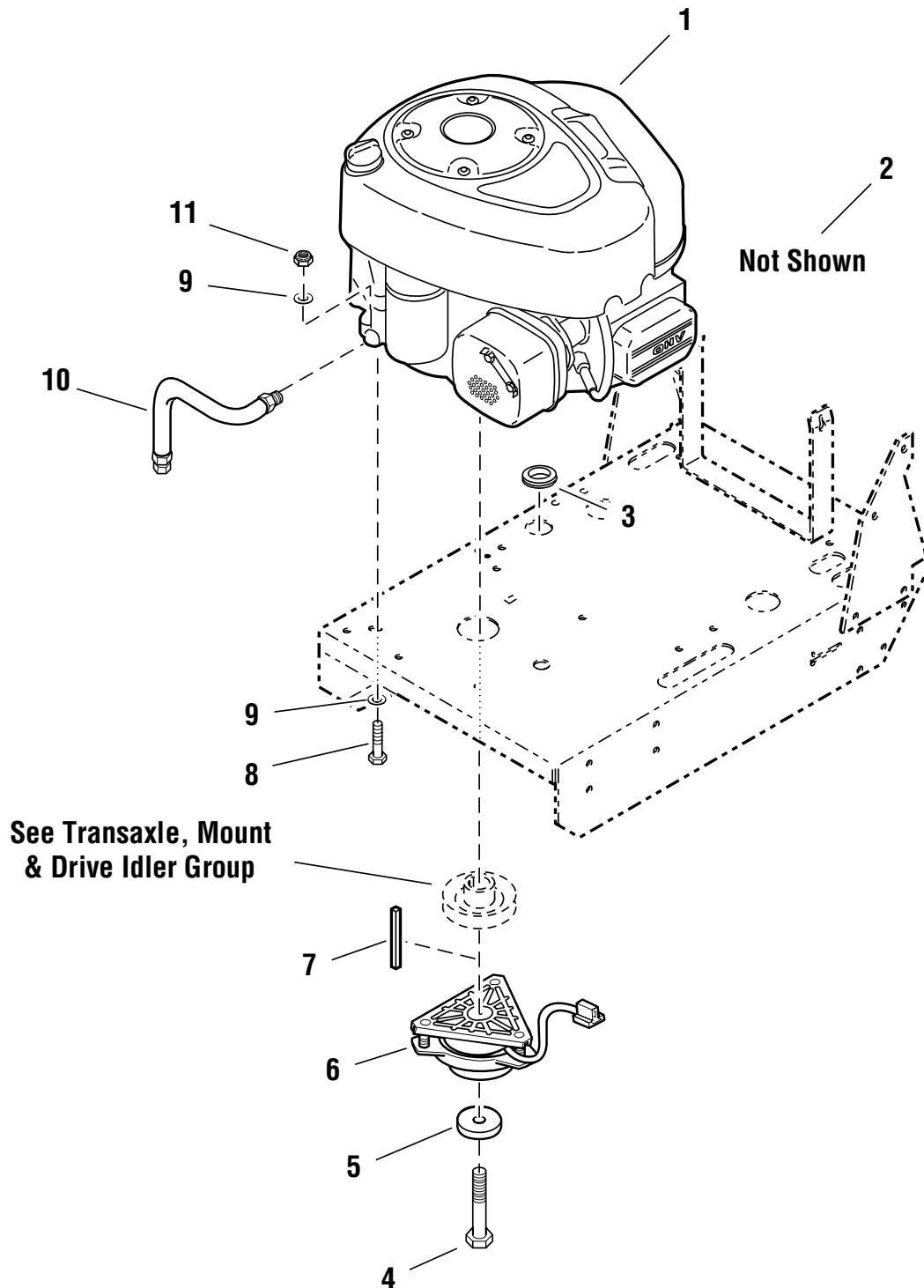
The above parts group applies to the following Mfg. Nos.:

1694494 - Pacer

Engine & PTO Group

FI0001

NOTE: Unless noted otherwise,
use the standard hardware torque
specification chart.



The above parts group applies to the following Mfg. Nos.:

1694494 - Pacer

Engine & PTO Group

REF NO.	PART NO.	QTY.	DESCRIPTION
1	*	1	ENGINE, 13HP Briggs & Stratton, Model 28
2	50211783	1	FUEL FILTER
	*	1	OIL FILTER
	*	1	FOAM PRE-CLEANER
	*	1	AIR FILTER
	*	1	SPARK PLUG
	*	1	MUFFLER
	*	1	EXHAUST MANIFOLD
	*	1	EXHAUST DEFLECTOR
	*	2	EXHAUST MANIFOLD GASKET
3	5021379	1	GROMMET
4	5047632	1	CRANKSHAFT BOLT, 7/16 x 2-3/4
5	5042132	1	CLUTCH RETAINER
6	1717664	1	ELECTRIC CLUTCH
7	50504073	1	KEY, 1/4 Sq. x 2
8	502501120	1	CAPSCREW, Hex Head, 5/16-18 x 2-1/2
9	5025155	5	WASHER, 5/16
10	5048681	1	OIL DRAIN HOSE
11	5025057	4	NUT, Hex Nylon Lock, 5/16-18

Footnotes

* See your local Briggs & Stratton engine dealer for service parts.

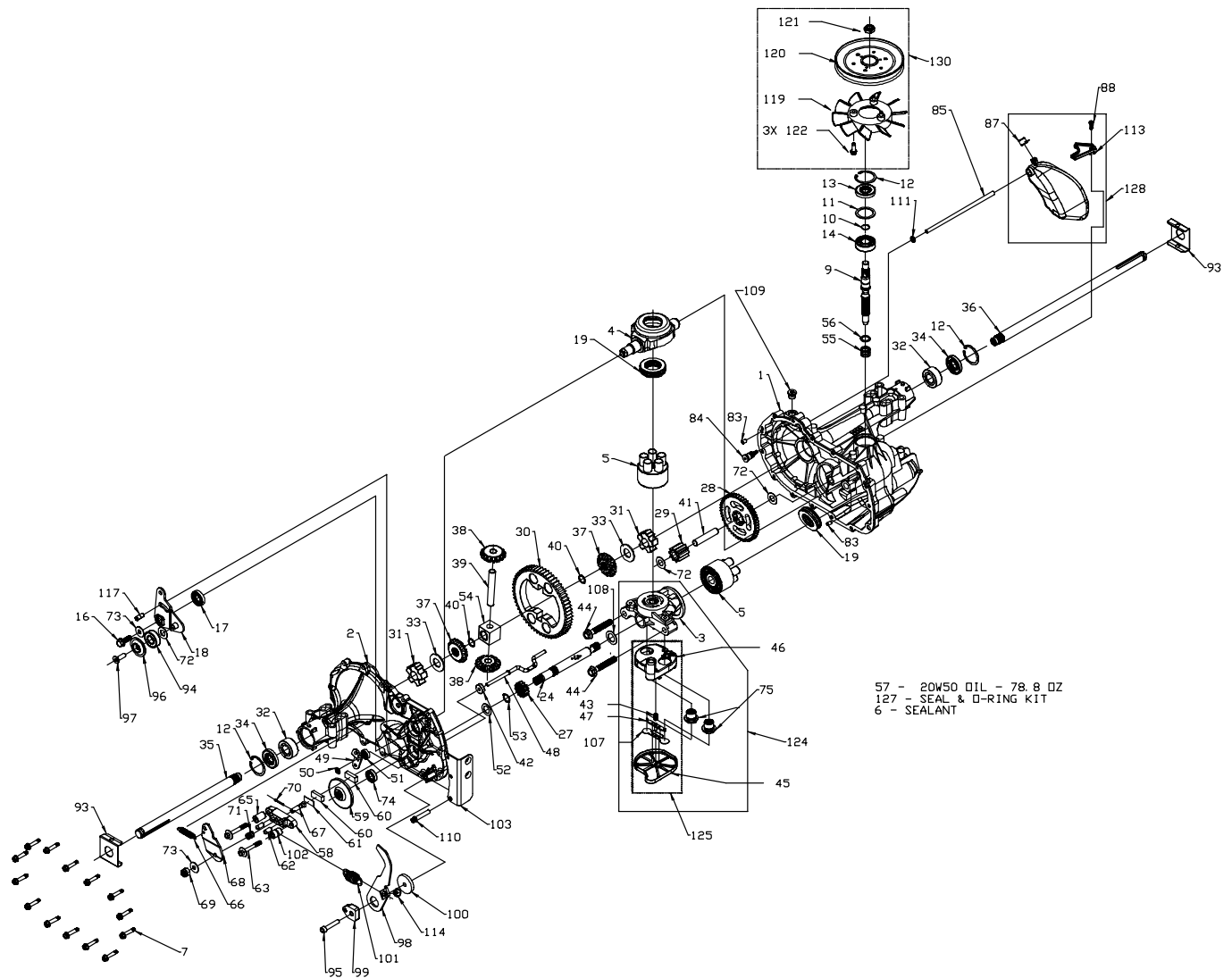
The above parts group applies to the following Mfg. Nos.:

1694494 - Pacer

Transaxle SERVICE PARTS

NOTE: Unless noted otherwise,
use the standard hardware torque
specification chart.

5022905



The above parts group applies to the following Mfg. Nos.:
1694494 - Pacer

Transaxle SERVICE PARTS

REF NO.	PART NO.	QTY.	DESCRIPTION
6	50229051	10.5	SEALANT
9	50229052	1	SHAFT, INPUT
10	50229053	1	RING - RETAINING
11	50229054	1	SPACER
12	50229055	3	RING - RETAINING
14	50229056	1	BALL BEARING
32	50229057	2	OUTBOARD SLEEVE BEARING
35	50229058	1	AXLE SHAFT - RH
36	50229059	1	AXLE SHAFT - LH
55	502290510	1	SPRING - HELICAL COMPRESSION
56	502290511	1	WASHER
57	502290512	78.8	20W-50 OIL
101	5022967	1	HYDRO RETURN SPRING
119	502290513	1	FAN, 6", 10 BLADE
128	502290514	1	EXPANSION TANK KIT
130	502290515	1	FAN/PULLEY KIT (includes Ref. 119)

Footnotes

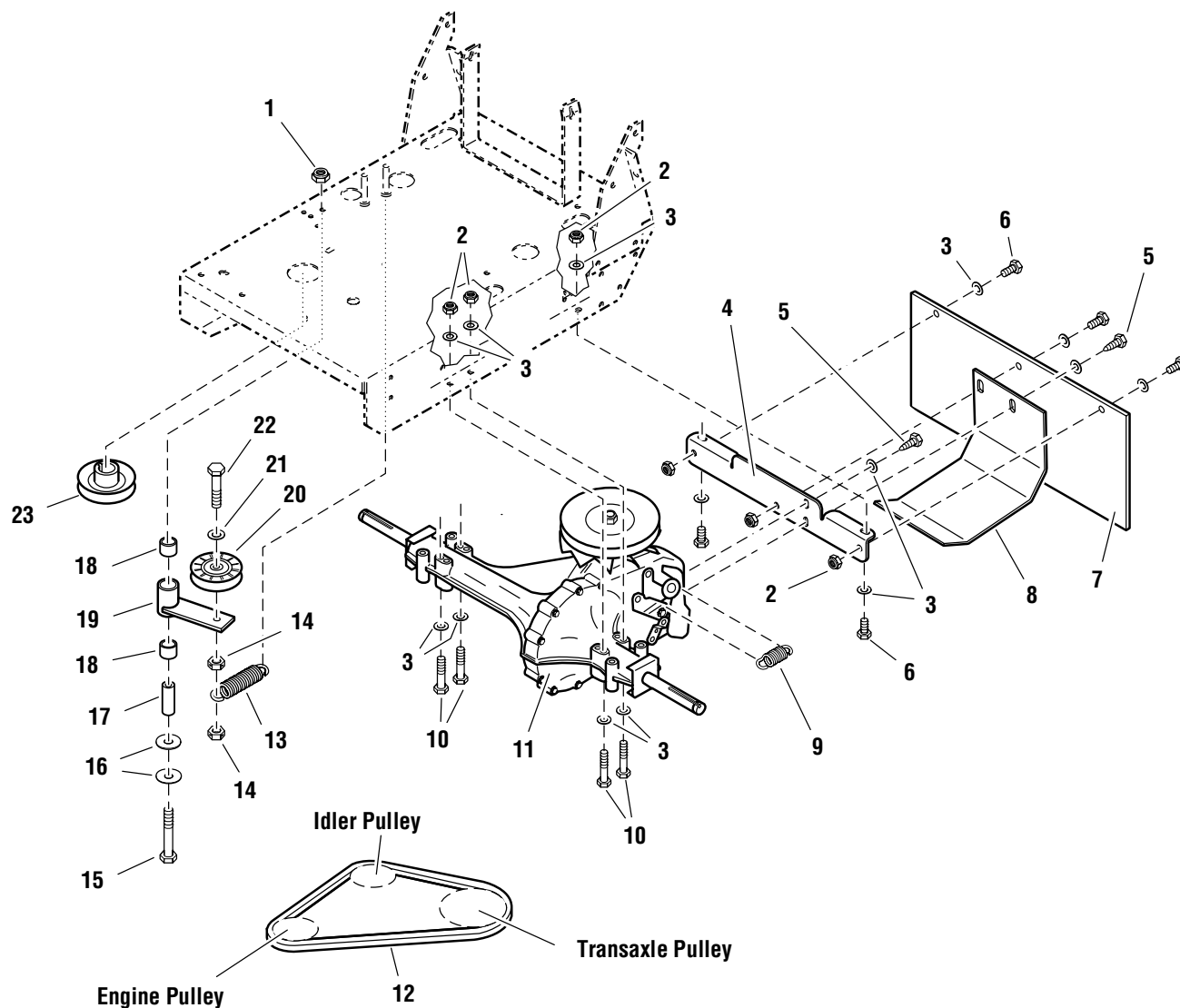
The above parts group applies to the following Mfg. Nos.:

1694494 - Pacer

Transaxle, Mount & Drive Idler Group

FI0002

NOTE: Unless noted otherwise,
use the standard hardware torque
specification chart.



The above parts group applies to the following Mfg. Nos.:

1694494 - Pacer

Transaxle, Mount & Drive Idler Group

REF NO.	PART NO.	QTY.	DESCRIPTION
1	5025096	1	NUT, Hex Nylon Lock, 3/8-16
2	5025057	9	NUT, Hex Nylon Lock, 5/16-18
3	5025155	15	WASHER, 5/16
4	503847582	1	TRANSAXLE BRACE
5	50250596	2	CAPSCREW, Hex Head, Self-Tapping, 5/16-18 x 3/4
6	50250116	5	CAPSCREW, Hex Head, 5/16-18 x 3/4
7	5047736	1	RUBBER FLAP
8	503848312	1	SKID PLATE
9	5022967	1	HYDRO RETURN SPRING
10	502501124	4	CAPSCREW, Hex Head, 5/16-18 x 3
11	5022905	1	HYDROSTATIC TRANSAXLE
12	5022968	1	BELT
13	5020807	1	SPRING, Extension
14	5025100	2	NUT, Hex, Side Lock, 3/8-16
15	502501324	1	CAPSCREW, Hex Head, 3/8-16 x 3
16	5025165	2	WASHER, Fender, 3/8
17	5047716	1	SPACER
18	5020876B	2	BUSHING, Brass
19	503847717	1	TRANSAXLE IDLER ARM
20	5043627	1	IDLER PULLEY ASSEMBLY
21	5025156	1	WASHER, 3/8
22	502501316	1	CAPSCREW, Hex Head, 3/8-16 x 2
23	5047626	1	TRANSAXLE DRIVE PULLEY

Footnotes

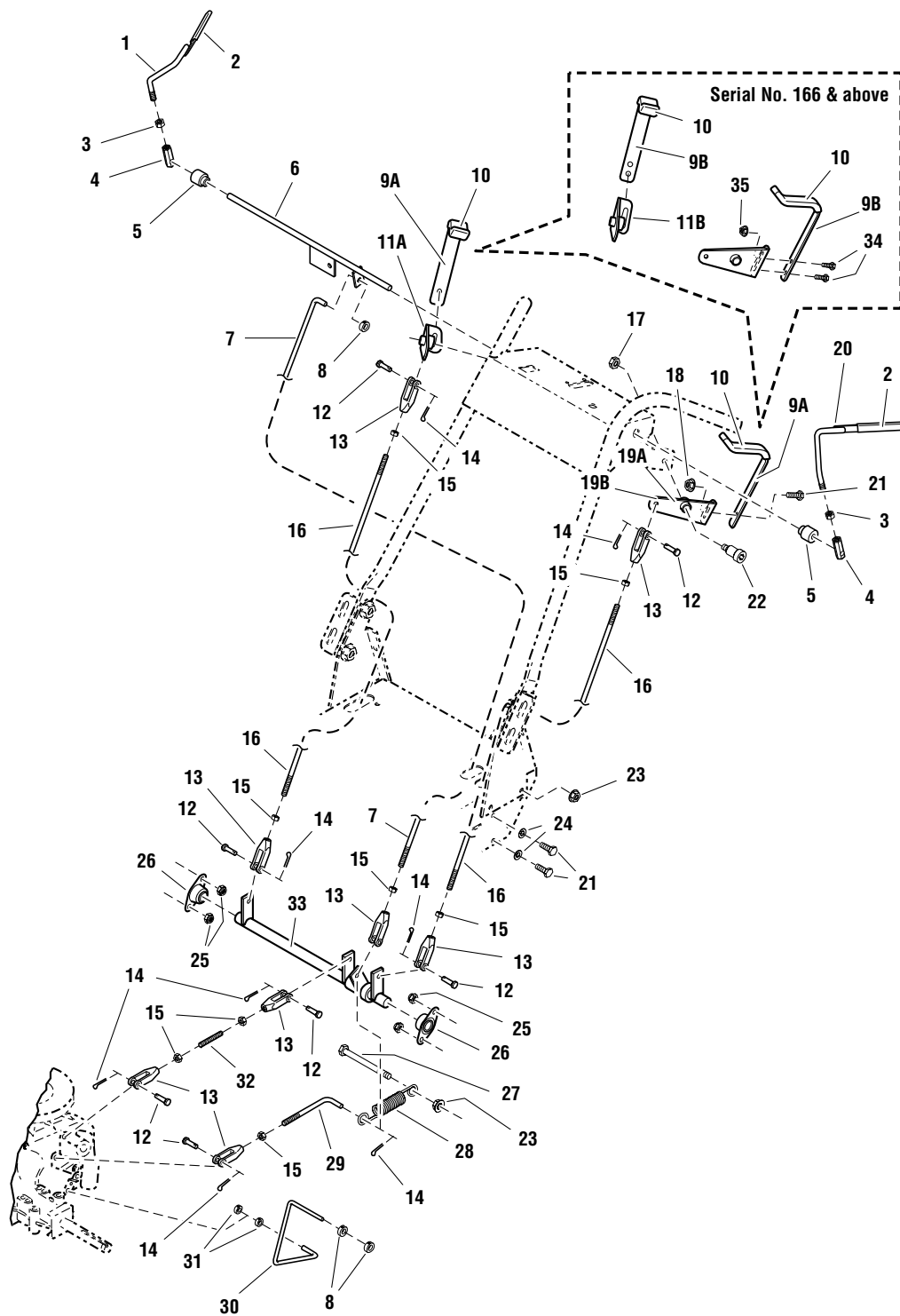
The above parts group applies to the following Mfg. Nos.:

1694494 - Pacer

Controls Group

FI0003

NOTE: Unless noted otherwise,
use the standard hardware torque
specification chart.



The above parts group applies to the following Mfg. Nos.:
1694494 - Pacer

Controls Group

REF NO.	PART NO.	QTY.	DESCRIPTION
1	503844670R	1	OPERATOR PRESENCE HANDLE - RH, Complete (includes Ref 2)
2	5021490	2	VINYL GRIP
3	5025034	2	NUT, Hex, 3/8-16
4	5043417	2	ADJUSTER LINKAGE
5	5045943	2	SHOULDER SPACER
6	503847723	1	SWITCH ROD
7	5048327	1	BRAKE ROD
8	5020047	3	COLLAR, Set, 5/16
9A	503842614	2	THUMB CONTROL LEVER, Complete (includes Ref No. 10) (S/N: 101-165)
9B	503848547	2	THUMB CONTROL LEVER, Complete (includes Ref No. 10) (S/N: 166 & up)
10	5025510	2	FOAM GRIP
11A	503842542	1	PIVOT CONTROL - RH (S/N: 101-165)
11B	503848544	1	PIVOT CONTROL - RH (S/N: 165 & up)
12	50252138	7	PIN, Clevis, 5/16 x 1
13	5020979	8	CLEVIS, Plastic, 5/16-24
14	50252016	8	PIN, Cotter
15	5025033	8	NUT, Hex, 5/16-24
16	5047642	2	THUMB CONTROL ROD
17	5025100	2	NUT, Hex, Side Lock, 3/8-16
18	5025139	2	NUT, Hex Serrated Flange, 5/16-18
19A	503842541	1	PIVOT CONTROL - LH (S/N: 101-165)
19B	503848545	1	PIVOT CONTROL - LH (S/N: 166 & up)
20	503844670L	1	OPERATOR PRESENCE HANDLE - LH, Complete (includes Ref 2)
21	50250116	6	CAPSCREW, Hex Head, 5/16-18 x 3/4
22	5025223	2	SHOULDER BOLT, 1/2 x 1
23	5025128	2	NUT, Hex Serrated Flange, 3/8-16
24	5025155	4	WASHER, 5/16
25	5025057	4	NUT, Hex Nylon Lock, 5/16-18
26	5021098	2	BEARING, Flange
27	502501332	1	CAPSCREW, Hex Head, 3/8-16 x 4
28	5021242	1	SPRING, Extension
29	5048328	1	BRAKE LINKAGE ROD
30	5047732	1	DUMP VALVE ROD
31	5022481	2	COLLAR, Set, 1/4
32	5047740	1	LINK STUD
33	503847697	1	CONTROL SHAFT ASSEMBLY
34	50250106	4	CAPSCREW, Hex Head, 1/4-20 x 3/4
35	5025126	4	NUT, Hex Serrated Flange, 1/4-20

Footnotes

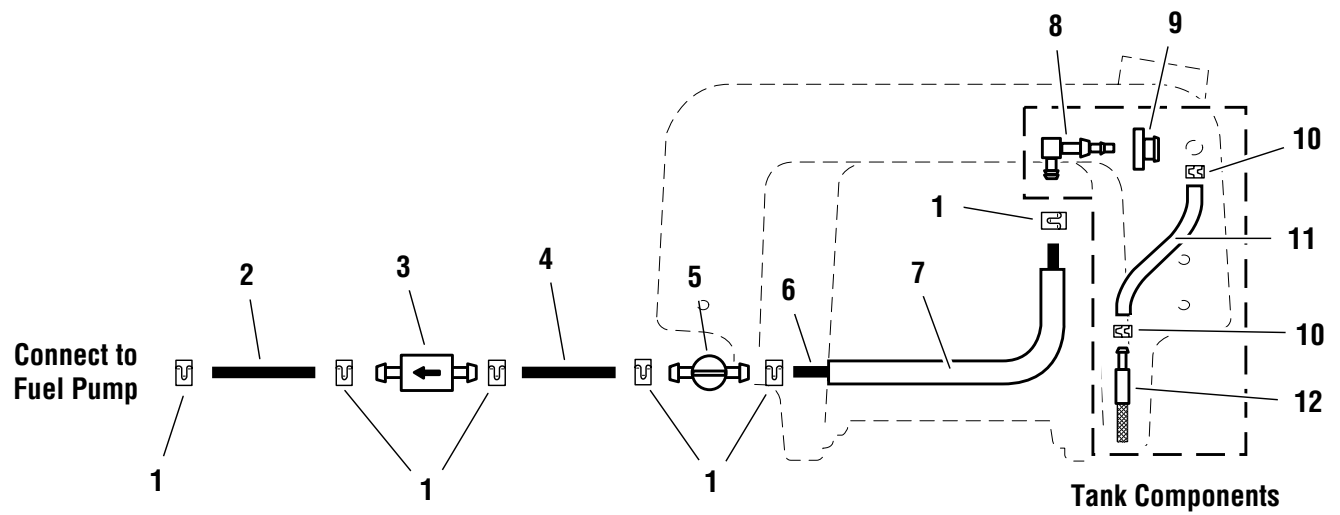
The above parts group applies to the following Mfg. Nos.:

1694494 - Pacer

Fuel Supply Group

NOTE: Unless noted otherwise,
use the standard hardware torque
specification chart.

FI0005



The above parts group applies to the following Mfg. Nos.:

1694494 - Pacer

Fuel Supply Group

REF NO.	PART NO.	QTY.	DESCRIPTION
1	5020835	6	CLAMP, Hose
2	50508315	1	HOSE, 5" (supplied with engine)
3	50211783	1	FUEL FILTER
4	50508313	1	HOSE, 3"
5	5021235	1	VALVE, FUEL Shut-Off
6	505083115	1	HOSE, 15"
7	505083313	1	WIRE LOOM, 13"
8	5023061	1	ELBOW FITTING
9	1654930	1	GROMMET
10	5023069	2	HOSE CLAMP
11	505092520	1	HOSE, 20"
12	5023067	1	SCREEN FITTING

Footnotes

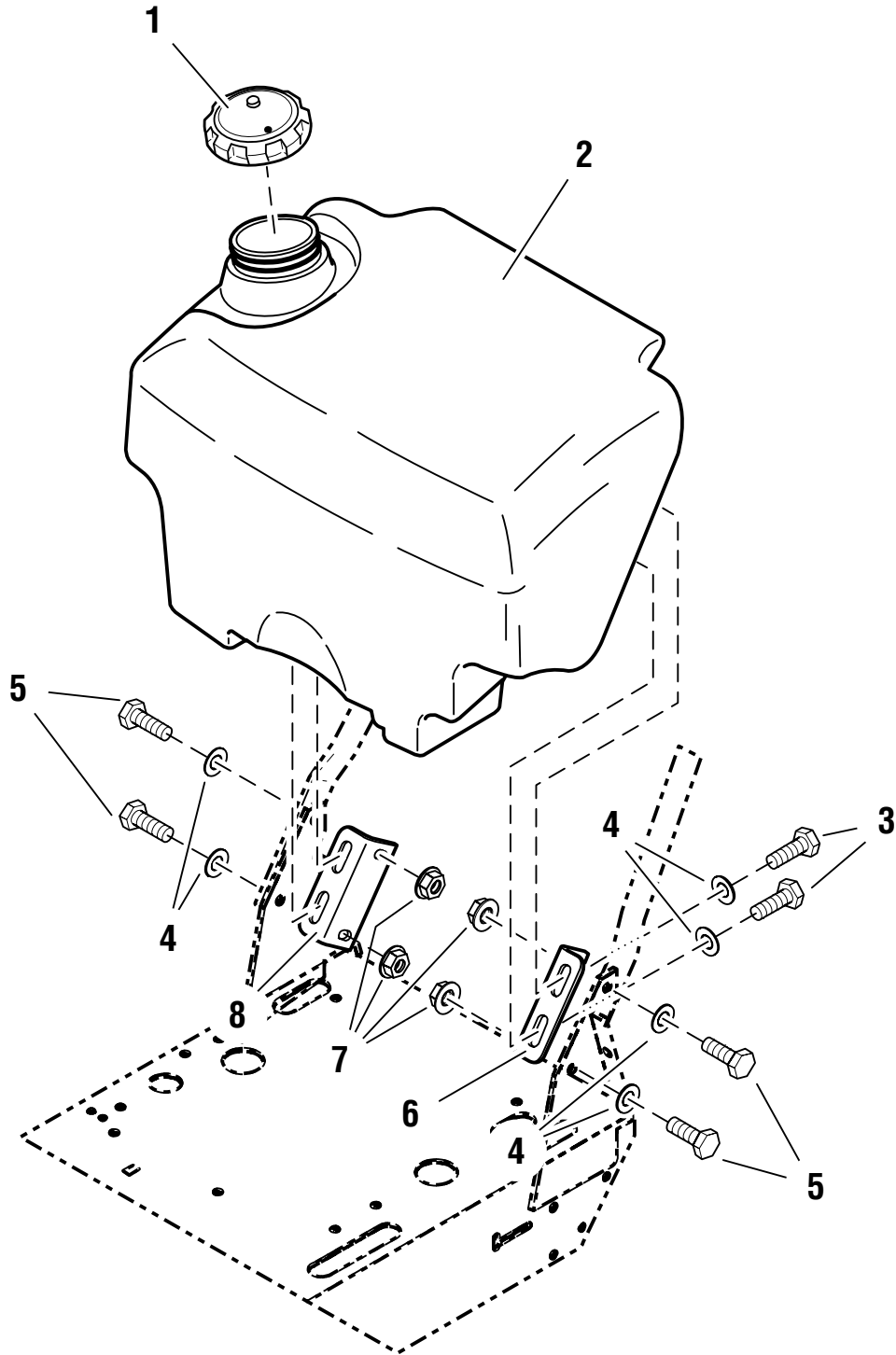
The above parts group applies to the following Mfg. Nos.:

1694494 - Pacer

Fuel Tank Group

FI0004

NOTE: Unless noted otherwise,
use the standard hardware torque
specification chart.



The above parts group applies to the following Mfg. Nos.:

1694494 - Pacer

Fuel Tank Group

REF NO.	PART NO.	QTY.	DESCRIPTION
1	5022158	1	FUEL TANK CAP
2	5048149	1	FUEL TANK
3	50250136	4	CAPSCREW, Hex Head, 3/8-16 x 3/4
4	5025156	8	WASHER, 3/8
5	502501310	4	CAPSCREW, Hex Head, 3/8-16 x 1-1/4
6	503848342	1	FUEL TANK MOUNT - LH
7	5025128	4	NUT, Hex Serrated Flange, 3/8-16
8	503848343	1	FUEL TANK MOUNT - RH

Footnotes

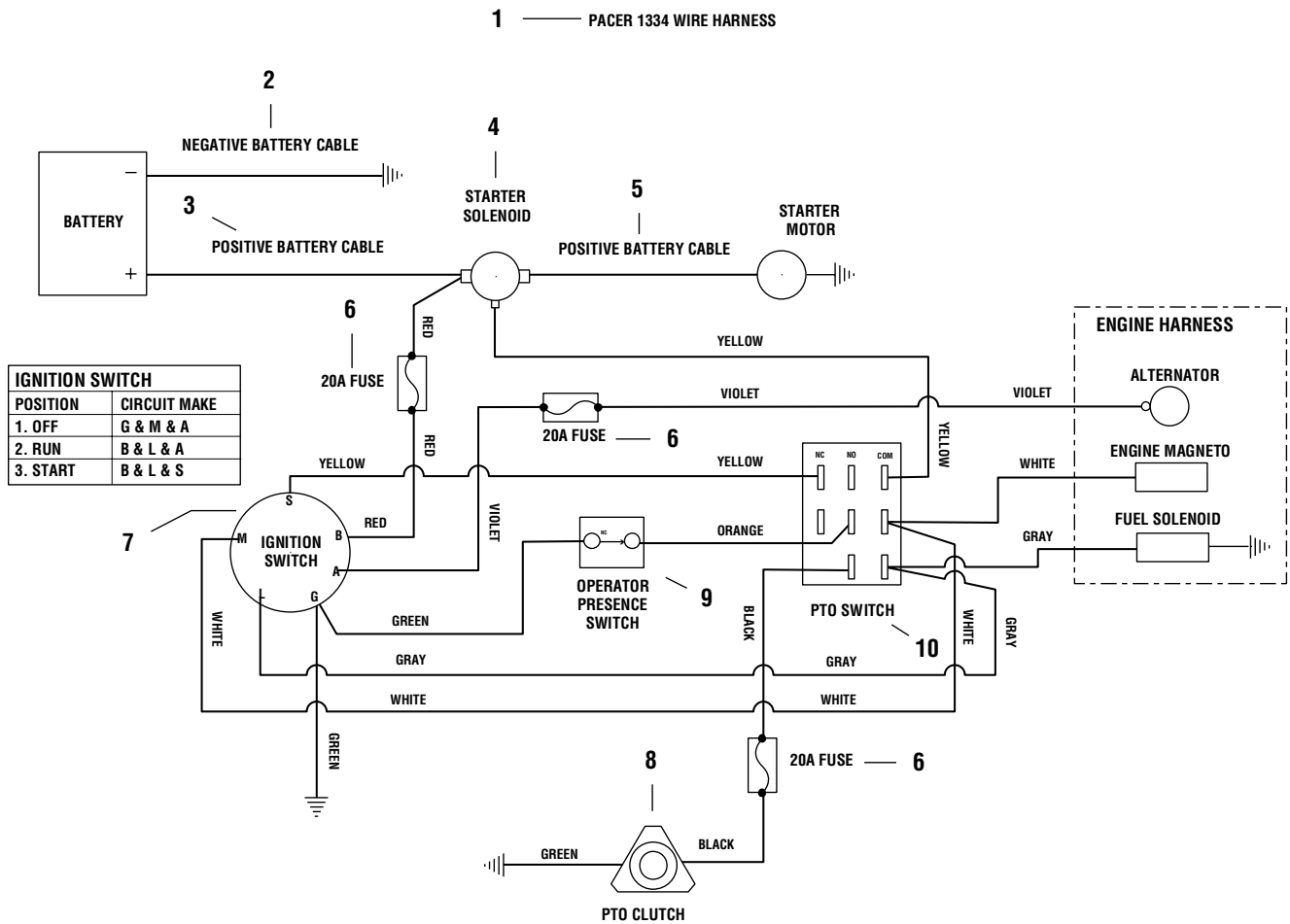
The above parts group applies to the following Mfg. Nos.:

1694494 - Pacer

Electrical Schematic

FI0007

NOTE: Unless noted otherwise, use the standard hardware torque specification chart.



The above parts group applies to the following Mfg. Nos.:

1694494 - Pacer

Electrical Schematic

REF NO.	PART NO.	QTY.	DESCRIPTION
1	5047826	1	HARNESS, Wire Pacer
2	5045894	1	CABLE, Battery Negative
3	5021405	1	CABLE, Battery Positive
4	5020801	1	SOLENOID, Starter
5	5048729	1	CABLE, Battery Positive
6	5021603	3	FUSE, 20A
7	5020927	1	SWITCH, Ignition, Complete
8	1717664	1	CLUTCH, PTO
9	5021769	1	SWITCH, Operator Presents
10	5022180	1	SWITCH, PTO

Footnotes

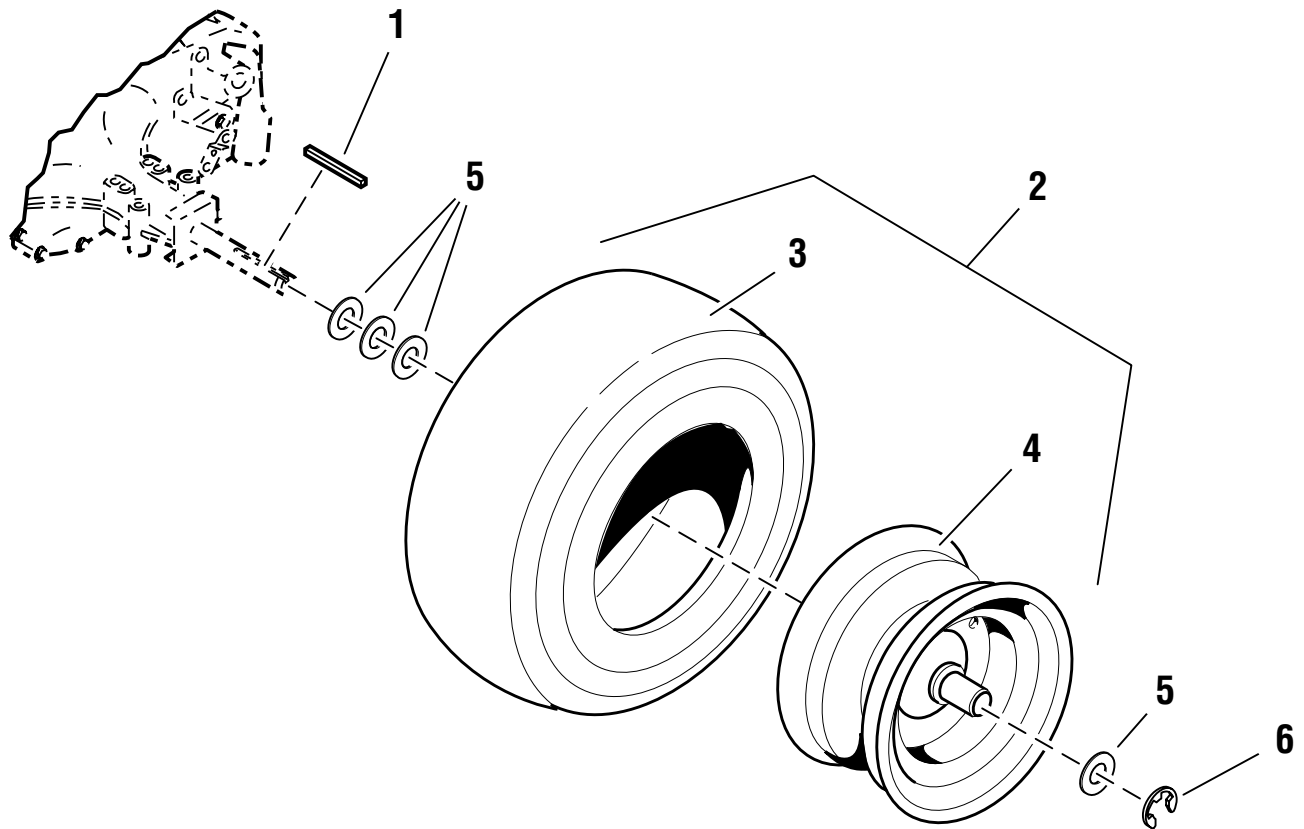
The above parts group applies to the following Mfg. Nos.:

1694494 - Pacer

Wheel & Tire Group

FI0006

NOTE: Unless noted otherwise,
use the standard hardware torque
specification chart.



The above parts group applies to the following Mfg. Nos.:

1694494 - Pacer

Wheel & Tire Group

REF NO.	PART NO.	QTY.	DESCRIPTION
1	5048409	2	KEY, 3/16
2	5022913	2	WHEEL & TIRE ASSEMBLY, 16 x 6.5 x 8, Complete (Includes Ref. No. 3 & 4)
3	50229132	2	TIRE, 16. x 6.5 x 8
4	50229131	2	WHEEL ASSEMBLY, 8 x 5.38
5	50255203	8	SHIM
6	5020863	2	C-CLIP

Footnotes

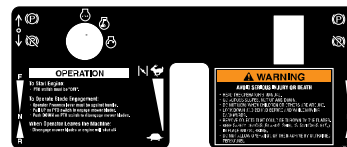
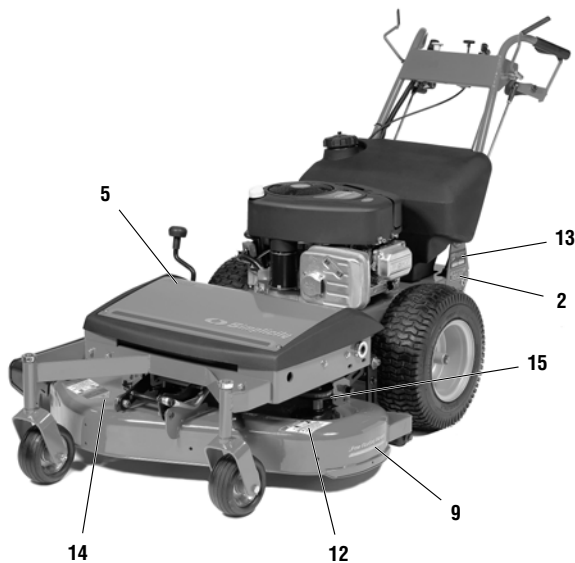
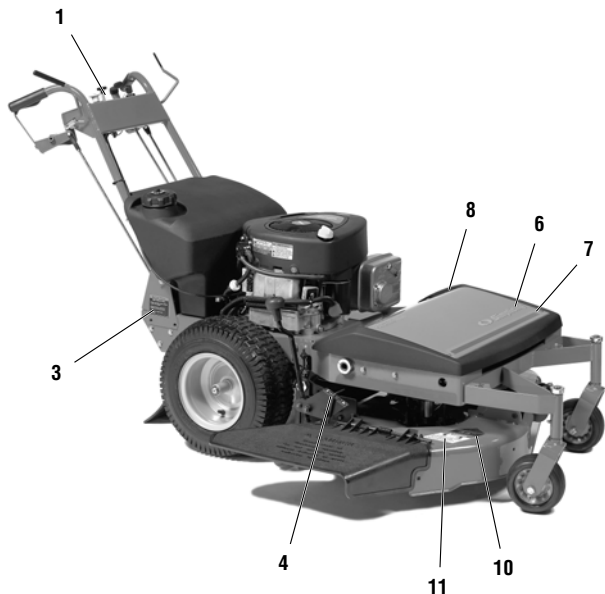
The above parts group applies to the following Mfg. Nos.:

1694494 - Pacer

Decals - Brand, Model, Safety & Instruction

FI0008

NOTE: Unless noted otherwise, use the standard hardware torque specification chart.



5 — **PACER 1334**

6 — **Simplicity**



The above parts group applies to the following Mfg. Nos.:
 1694494 - Pacer

Decals - Brand, Model, Safety & Instruction

REF NO.	PART NO.	QTY.	DESCRIPTION
1	5047627	1	DECAL, Control Panel
2	5021818	1	DECAL, Warning Machine Climb
3	5048261	1	DECAL, Warning Explosive Fuel
4	1723470	1	DECAL, Height Of Cut
5	5023122	1	DECAL, Pacer 1334
6	1722551	1	DECAL, Simplicity, Silver & Blue, W/Icon
7	1723785	1	DECAL, Stripe, Blue & Silver
8	1704473	1	DECAL, Hot
9	1722771	1	DECAL, Free Floating
10	1722786	1	DECAL, 34"
11	1704277	1	DECAL, Danger (Chute In Place)
12	1704276	1	DECAL, Danger (Hand Under Deck)
13	*	1	MODEL/SERIAL TAG (Not Serviced)
14	*	1	DECAL, OPEI (Not Serviced)
15	*	1	DECAL, ID Plate

Footnotes

* Not a serviceable part.

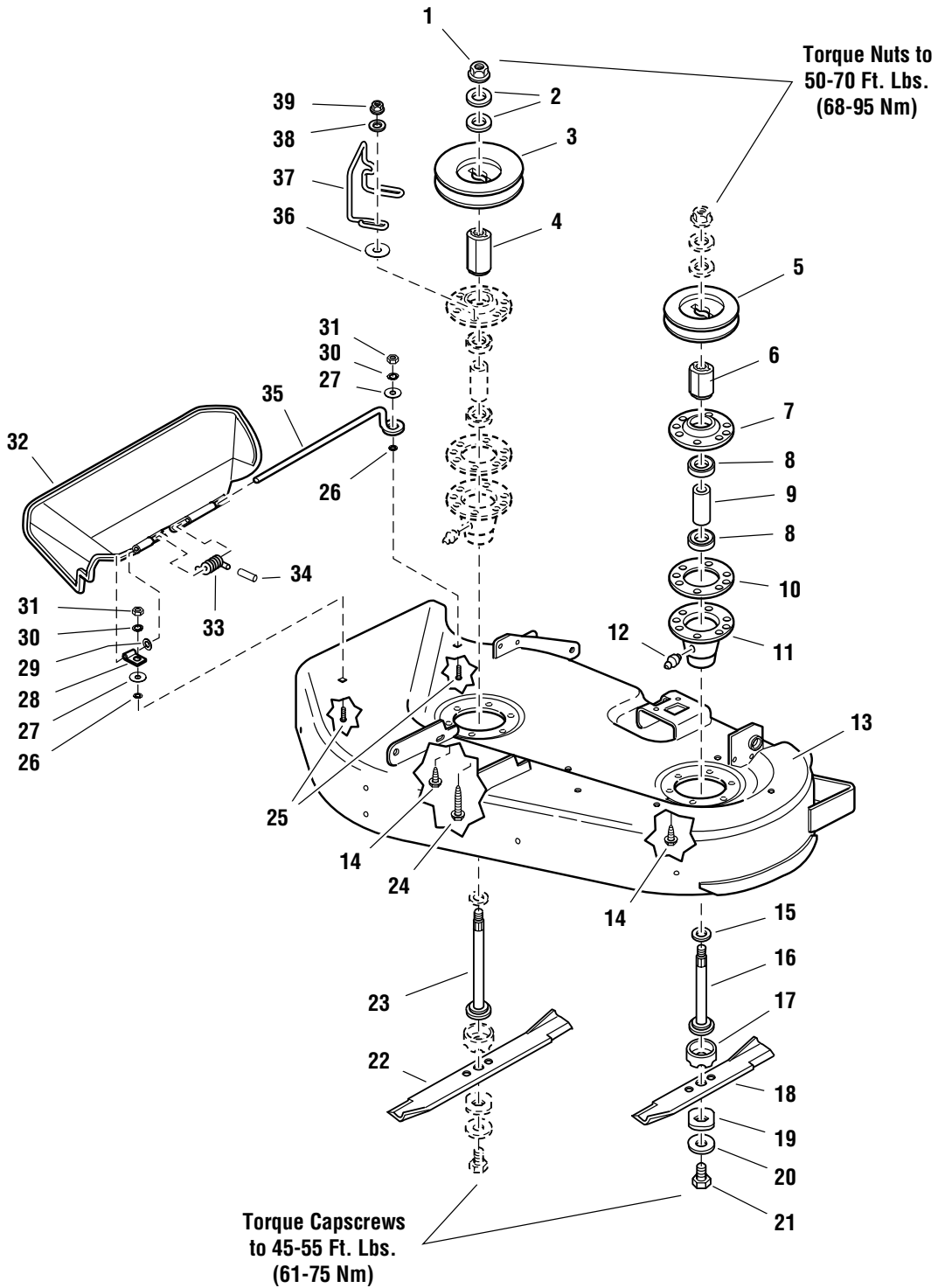
The above parts group applies to the following Mfg. Nos.:

1694494 - Pacer

34" Mower Deck - Housing, Arbors & Blades

986220

NOTE: Unless noted otherwise, use the standard hardware torque specification chart.



The above parts group applies to the following Mfg. Nos.:

1694287 - 34" Mower

34" Mower Deck - Housing, Arbors & Blades

REF NO.	PART NO.	QTY.	DESCRIPTION
1	1714419	2	NUT, Hex Flange, 9/16-18
2	1713675	4	WASHER, Belleville
3	1713091	1	PULLEY
4	1713616	1	HUB
5	1713090	1	PULLEY
6	1713614	1	HUB
7	1713199	2	COVER, Arbor Housing
8	1705897	4	BEARING
9	1713204	2	SPACER
10	1707335	2	GASKET, Foam
11	1713338	2	HOUSING, Arbor, Bottom (Includes Ref. No. 12)
12	1704314	2	FITTING, Lube
13	1724359	1	MOWER HOUSING, 34"
14	1664847	10	CAPSCREW, Hex Washer Head, Taptite, 5/16-18 x 3/4, Black
15	1713619	2	WASHER
16	1713610	1	SHAFT, Arbor
17	1713196	2	SHIELD, Grass
18	1706737	1	BLADE, Mower, 14.42
19	1713089	2	WASHER, Hex, Special
20	1656916	2	WASHER, Spring
21	1923471	2	CAPSCREW, Hex Head, 7/16-14 x 1-1/4, Black
22	1706738	1	BLADE, Mower, 19.90
23	1713612	1	SHAFT, Arbor
24	1930600	2	CAPSCREW, Hex Washer Head, Taptite, 5/16-18 x 1-1/2, Black
25	1931318	2	CARRIAGE BOLT, 1/4-20 x 7/8, Black
26	1960518	2	NUT, Push, 1/4, Black
27	1960353	2	WASHER, 1/4, Black
28	1704873	1	CLAMP
29	1919326	1	WASHER, 5/16, Black
30	1916964	2	LOCKWASHER, 1/4, Black
31	1916622	2	NUT, Hex, 1/4-20, Black
32	1705449	1	DEFLECTOR, Plastic
33	1723938	1	SPRING, Torsion
34	1723323	1	CAP, Spring End
35	1706709	1	ROD
36	1924356	2	WASHER, 5/16, Black
37	1704099	1	BELT GUIDE
38	1919381	2	WASHER, 5/16, Black
39	1927557	2	NUT, Hex Flange, 5/16-18

Footnotes

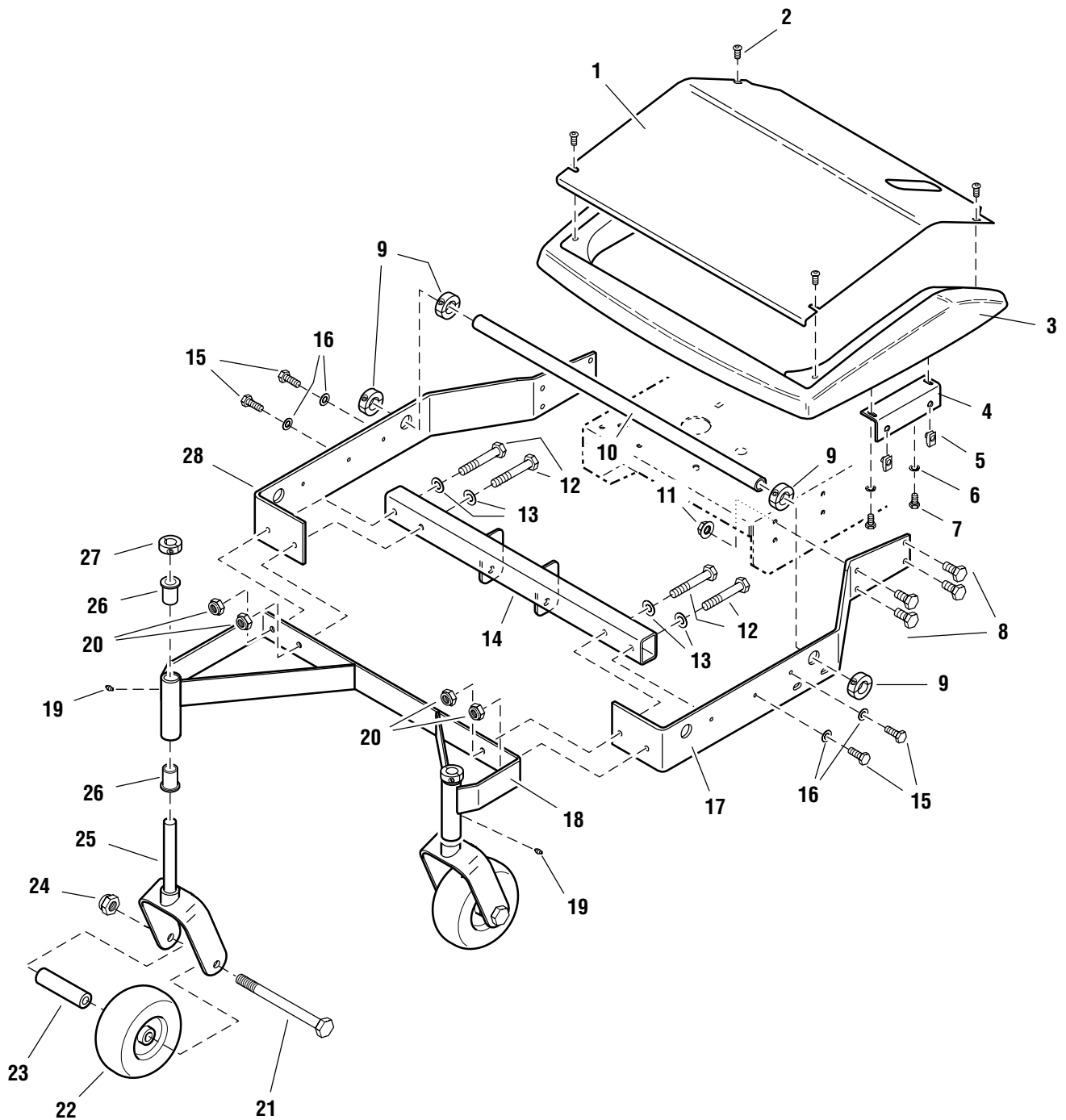
The above parts group applies to the following Mfg. Nos.:

1694287 - 34" Mower

34" Mower Deck - Frame, Caster & Shield

FI0009

NOTE: Unless noted otherwise,
use the standard hardware torque
specification chart.



The above parts group applies to the following Mfg. Nos.:
1694287 - 34" Mower

34" Mower Deck - Frame, Caster & Shield

REF NO.	PART NO.	QTY.	DESCRIPTION
1	503848181	1	SHIELD INSERT
2	50252994	4	SCREW, Allen Head, 1/4-20 x 1/2
3	5048150	1	GUARD, Mower Deck
4	503848353	2	SHIELD MOUNT BRACKET
5	5022308	4	BODY CLIP, 5/16-18
6	5025169	4	LOCKWASHER, 1/4
7	50250106	4	CAPSCREW, Hex Head, 1/4-20 x 3/4
8	50250138	8	CAPSCREW, Hex Head, 3/8-16 x 1
9	5048549	4	COLLAR, Double Split, 1
10	503847678	1	SHAFT
11	5025128	8	NUT, Hex Serrated Flange, 3/8-16
12	502501320	4	CAPSCREW, Hex Head, 3/8-16 x 2-1/2
13	5025156	4	WASHER, 3/8
14	503848196	1	HITCH TUBE
15	50250108	4	CAPSCREW, Hex Head, 5/16-18 x 1
16	5025155	4	WASHER, 5/16
17	503847648	1	FRAME RAIL - LH
18	503847825	1	CASTER MOUNT FRAME
19	5020095	2	GREASE FITTING, 1/4-28
20	5025096	4	NUT, Hex Nylon Lock, 3/8-16
21	502501744	2	CAPSCREW, Hex Head, 1/2-13 x 5-1/2
22	1722951	2	CASTER TIRE
23	5041657	2	SPACER
24	5025056	2	NUT, Hex Nylon Lock, 1/2-13
25	503847929	2	CASTER YOKE
26	5020823	4	BUSHING, Flange
27	5010114	2	COLLAR, Split, 3/4
28	503847649	1	FRAME RAIL - RH

Footnotes

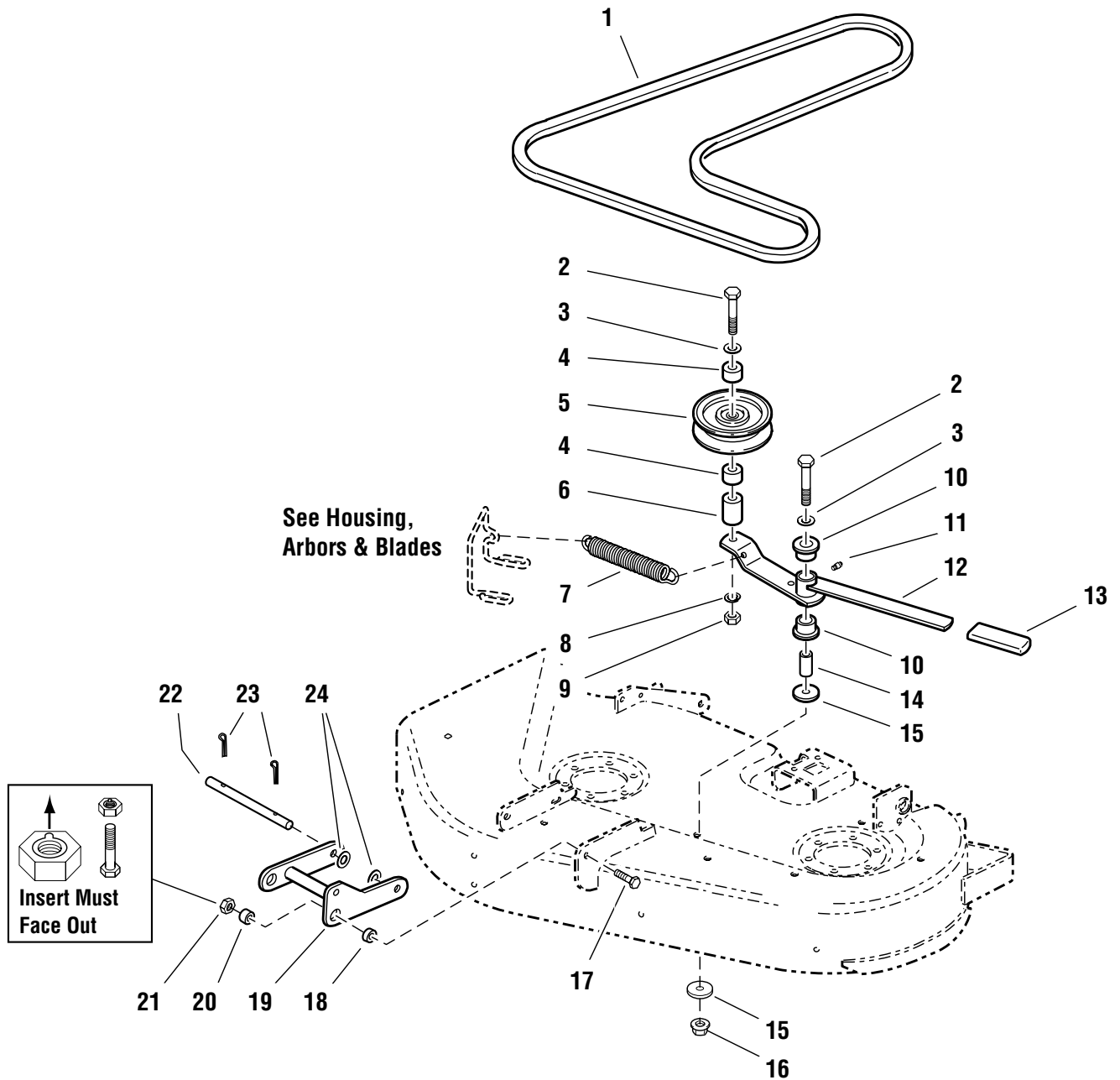
The above parts group applies to the following Mfg. Nos.:

1694287 - 34" Mower

34" Mower Deck - Belt, Idler Arm & Hitch

NOTE: Unless noted otherwise,
use the standard hardware torque
specification chart.

Q986220



The above parts group applies to the following Mfg. Nos.:
1694287 - 34" Mower

34" Mower Deck - Belt, Idler Arm & Hitch

REF NO.	PART NO.	QTY.	DESCRIPTION
1	1719819	1	BELT
2	1665835	2	CAPSCREW, Hex Head, 3/8-16 x 2-3/4
3	1924940	2	WASHER, 3/8
4	1667811	2	SPACER
5	1704926	1	PULLEY, Idler
6	1667812	1	SPACER
7	164213	1	SPRING, Extension
8	1916965	1	LOCKWASHER, 3/8
9	1916950	1	NUT, Hex, 3/8-16
10	1663114	2	BUSHING
11	912808	1	FITTING, Lube
12	1724535	1	LEVER & ARM ASSEMBLY, Complete (Includes Ref. No. 10 & 11)
13	1665835	1	GRIP
14	1657242	1	SPACER
15	1924356	2	WASHER, 3/8
16	1928352	1	NUT, Hex Serrated Flange, 3/8-16
17	1921969	2	CAPSCREW, Hex Head, 3/8-16 x 1-1/2
18	1668711	2	SPACER
19	1724357	1	HITCH
20	157081	2	SPACER
21	960641	2	NUT, Hex Lock, Aluminum Insert, 3/8-16
22	1724430	1	PIN
23	1718452	2	PIN, Cotter
24	1960170	2	WASHER, 1/2

Footnotes

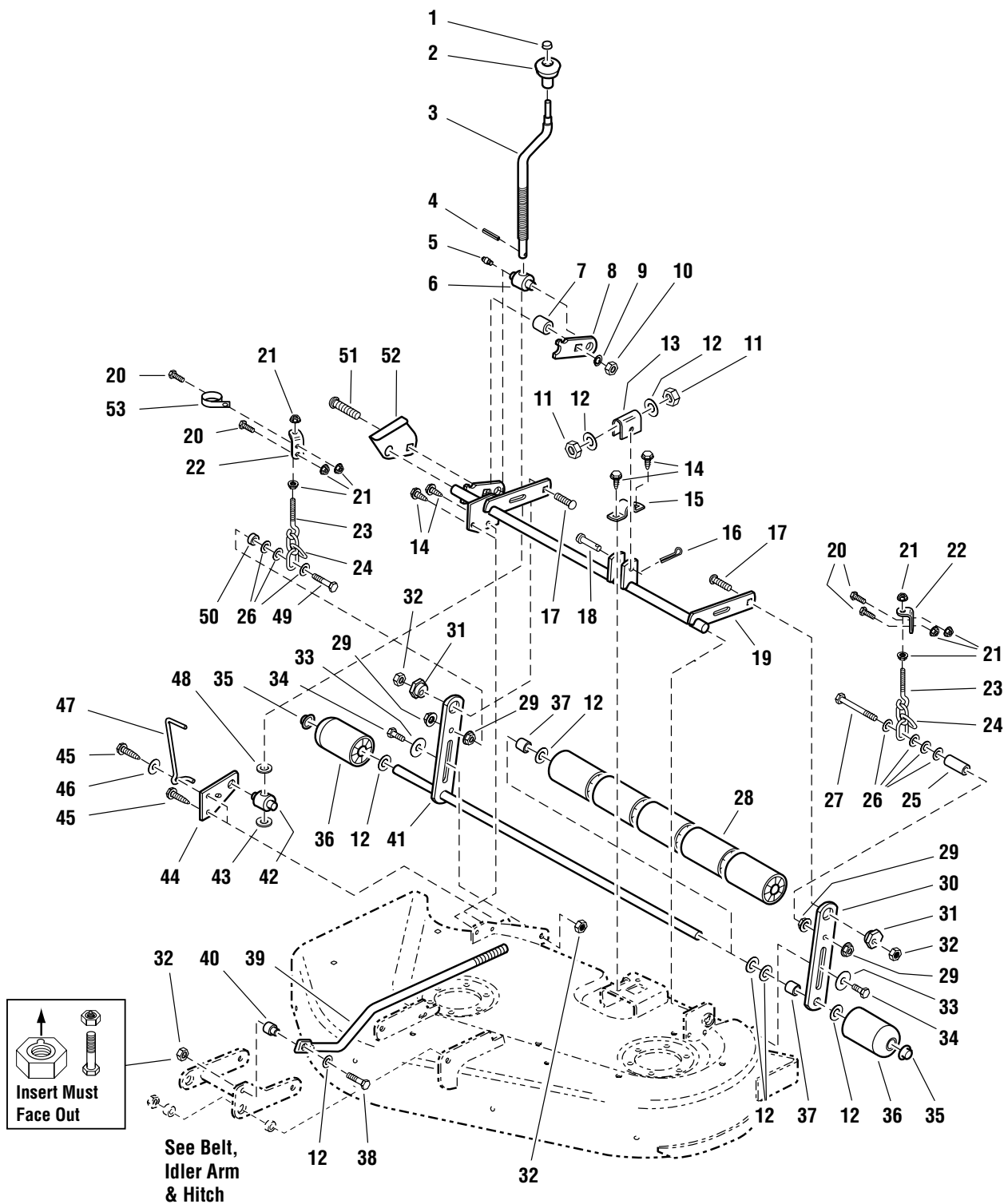
The above parts group applies to the following Mfg. Nos.:

1694287 - 34" Mower

34" Mower Deck - Height Adjustment & Roller Bar

986221

NOTE: Unless noted otherwise,
use the standard hardware torque
specification chart.



The above parts group applies to the following Mfg. Nos.:

1694287 - 34" Mower

34" Mower Deck - Height Adjustment & Roller Bar

REF NO.	PART NO.	QTY.	DESCRIPTION
1	1960093	1	NUT, Push, 3/8, Black
2	1714084	1	KNOB, Spinner
3	1719901	1	CRANK, Height Adjustment, Black
4	916001	1	PIN, Spring
5	1704314	1	FITTING, Lube
6	1715892	1	TRUNNION
7	1679166	1	SPACER
8	1722978	1	ARM, Height Adjust
9	1916966	1	LOCKWASHER, 1/2
10	1916951	1	NUT, Hex, 1/2-13
11	1915726	2	NUT, Hex, 5/8-18
12	1924366	7	WASHER, 5/8
13	1706645	1	TRUNNION
14	1664847	4	CAPSCREW, Hex Washer Head, Taptite, 5/16-18 x 3/4, Black
15	1665374	1	STRAP
16	1918452	1	PIN, Cotter
17	1931352	2	CARRIAGE BOLT, 3/8-16 x 1-1/2
18	118053	1	PIN, Clevis
19	1724362	1	SHAFT ASSEMBLY
20	1921333	4	CAPSCREW, Hex Head, 5/16-18 x 1
21	1931277	8	NUT, Hex Serrated Flange, 5/16-18
22	1724619	2	BRACKET, Rear Roller
23	107121	2	EYEBOLT
24	1707514	2	CHAIN, 3 Links
25	1719868	1	SPACER
26	1924940	8	WASHER, 3/8
27	1960653	1	CAPSCREW, Hex Head, 3/8-16 x 3-3/4, Black
28	1668513	5	ROLLER
29	1928352	4	NUT, Hex Serrated Flange, 3/8-16
30	1724394	1	BAR, Roller
31	1704082	2	CAM, Eccentric
32	960641	5	NUT, Hex Lock, Aluminum Insert, 3/8-16
33	1924361	2	WASHER, 1/2
34	172622	2	SHOULDER BOLT
35	1960520	2	NUT, Push, 5/8, Black
36	1722036	2	ROLLER, End
37	1602946	2	SPACER
38	1921969	1	CAPSCREW, Hex Head, 3/8-16 x 1-3/4
39	1724425	1	ROD, Pitch
40	1706644	1	SPACER

Footnotes

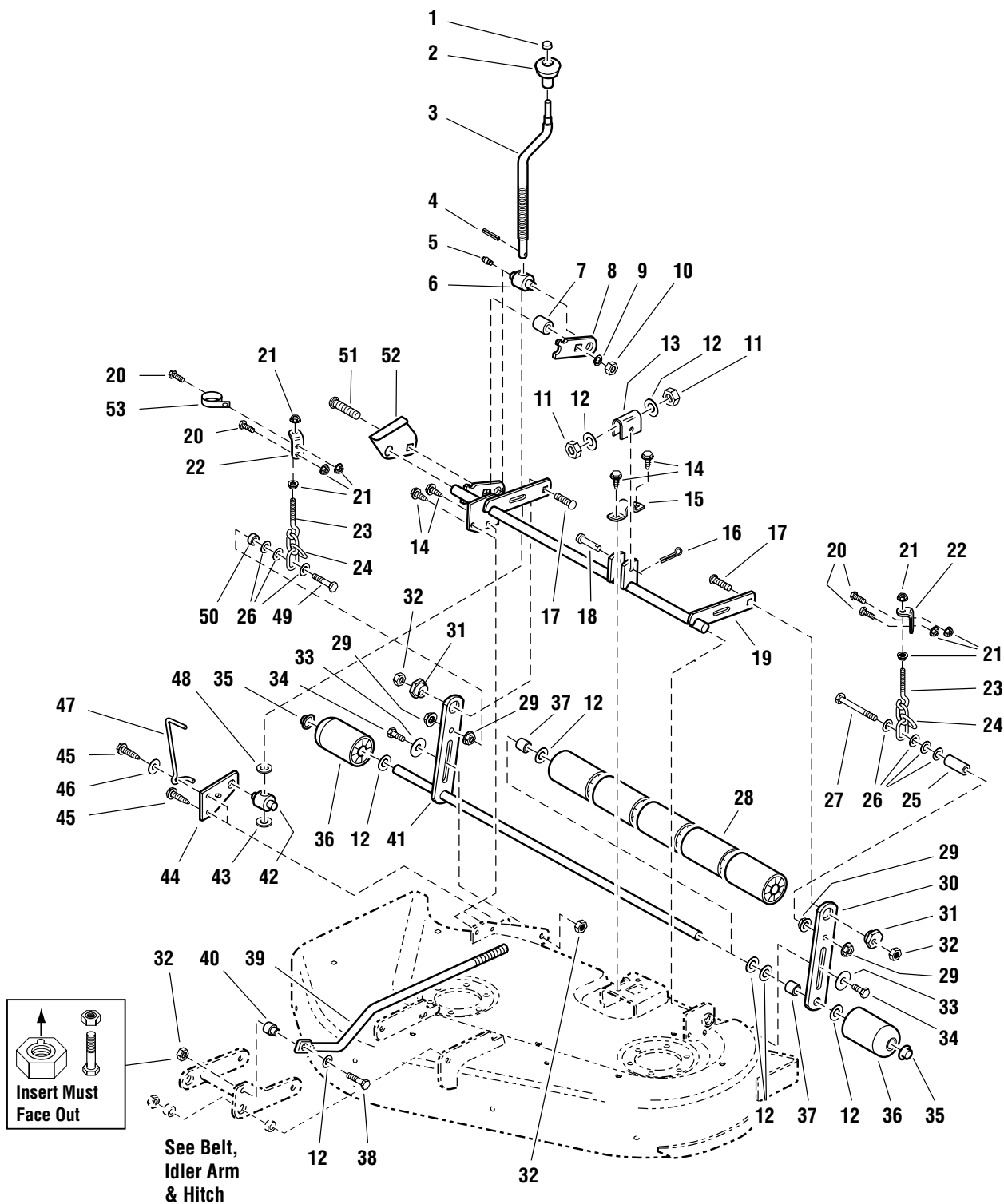
The above parts group applies to the following Mfg. Nos.:

1694287 - 34" Mower

34" Mower Deck - Height Adjustment & Roller Bar

986221

NOTE: Unless noted otherwise,
use the standard hardware torque
specification chart.



The above parts group applies to the following Mfg. Nos.:

1694287 - 34" Mower

34" Mower Deck - Height Adjustment & Roller Bar

REF NO.	PART NO.	QTY.	DESCRIPTION
41	1724396	1	SHAFT & BAR ASSEMBLY
42	1724009	1	TRUNNION
43	1704097	1	WASHER, Detent, Black
44	1704080	1	PLATE
45	1931202	2	CAPSCREW, Hex Washer Head, Taptite, 5/16-18 x 1-1/4, Black
46	1919381	1	WASHER, 5/16, Black
47	1704114	1	ROD, Height of Cut
48	1960170	1	WASHER, 1/2, Black
49	1923701	1	CAPSCREW, Hex Head, 3/8-16 x 2
50	1667811	1	SPACER
51	1960489	1	CARRIAGE BOLT, 1/2-13 x 2-1/2, Black
52	1724512	1	BRACKET, Height of Cut
53	5023173	1	CLAMP

Footnotes

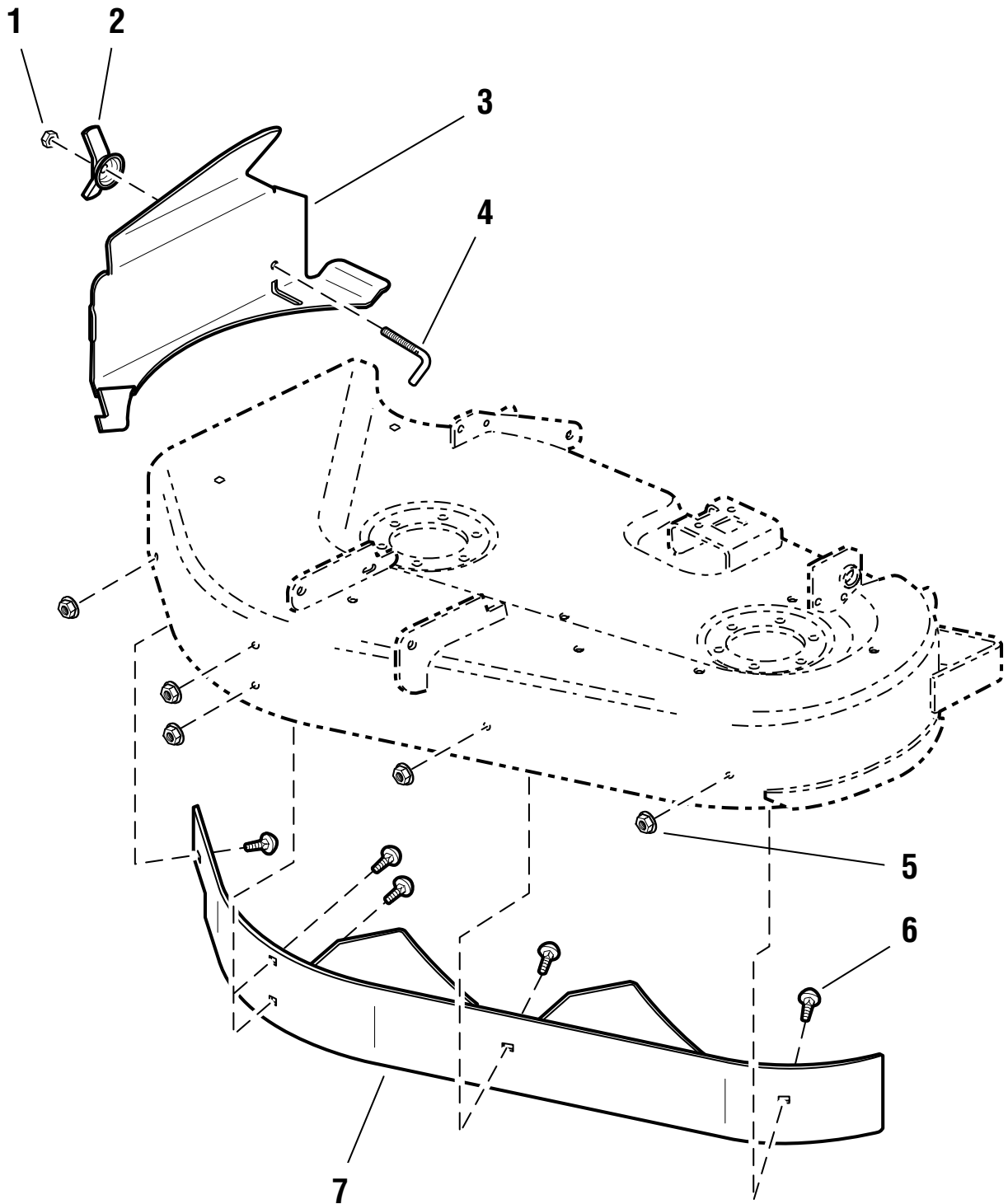
The above parts group applies to the following Mfg. Nos.:

1694287 - 34" Mower

34" Mower Deck - Grass Mulcher

986274

NOTE: Unless noted otherwise,
use the standard hardware torque
specification chart.



The above parts group applies to the following Mfg. Nos.:

1694287 - 34" Mower

34" Mower Deck - Grass Mulcher

REF NO.	PART NO.	QTY.	DESCRIPTION
1	1923362	1	NUT, Hex Lock, 5/16-18
2	1679163	1	WING NUT
3	1724832	1	MULCH PLATE
4	1724475	1	J-BOLT
5	1931277	5	NUT, Hex Serrated Flange, 5/16-18
6	1931333	5	CARRIAGE BOLT, 5/16-18 x 3/4
7	1724457	1	34" BAFFLE ASSEMBLY

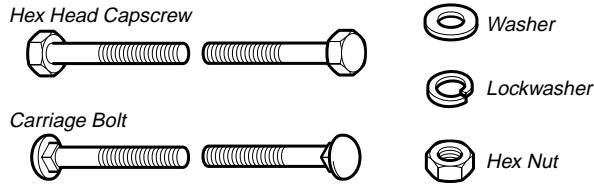
Footnotes

The above parts group applies to the following Mfg. Nos.:

1694287 - 34" Mower

Hardware Identification & Torque Specifications

Common Hardware Types

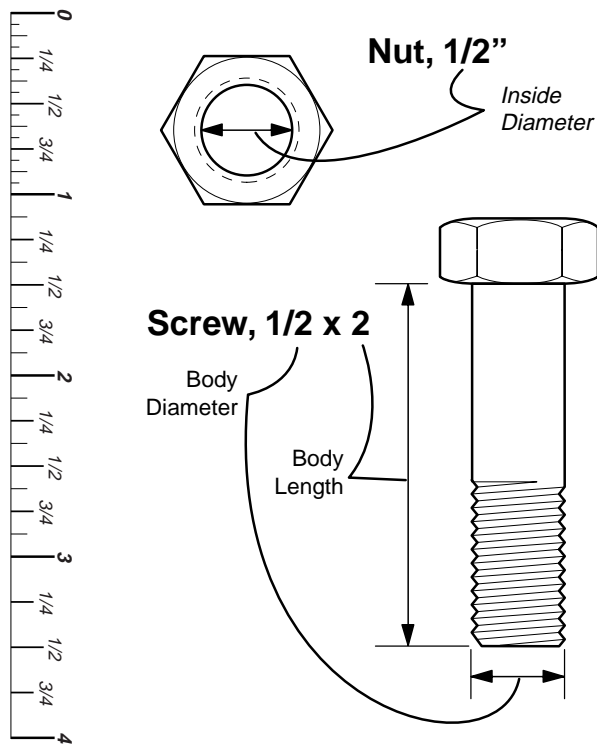


Standard Hardware Sizing

When a washer or nut is identified as **1/2"**, this is the *Nominal size*, meaning the *inside diameter* is 1/2 inch; if a second number is present it represents the *threads per inch*

When bolt or capscrew is identified as **1/2 - 16 x 2"**, this means the *Nominal size*, or *body diameter* is 1/2 inch; the second number represents the *threads per inch* (16 in this example, and the final number is the *body length* of the bolt or screw (in this example 2 inches long).

The guides and ruler furnished below are designed to help you select the appropriate hardware and tools.



Torque Specification Chart

FOR STANDARD MACHINE HARDWARE (Tolerance $\pm 20\%$)

Hardware Grade	No Marks SAE Grade 2		SAE Grade 5		SAE Grade 8	
	in/lbs ft/lbs	Nm.	in/lbs ft/lbs	Nm.	in/lbs ft/lbs	Nm.
8-32	19	2.1	30	3.4	41	4.6
8-36	20	2.3	31	3.5	43	4.9
10-24	27	3.1	43	4.9	60	6.8
10-32	31	3.5	49	5.5	68	7.7
1/4-20	66	7.6	8	10.9	12	16.3
1/4-28	76	8.6	10	13.6	14	19.0
5/16-18	11	15.0	17	23.1	25	34.0
5/16-24	12	16.3	19	25.8	27	34.0
3/8-16	20	27.2	30	40.8	45	61.2
3/8-24	23	31.3	35	47.6	50	68.0
7/16-14	30	40.8	50	68.0	70	95.2
7/16-20	35	47.6	55	74.8	80	108.8
1/2-13	50	68.0	75	102.0	110	149.6
1/2-20	55	74.8	90	122.4	120	163.2
9/16-12	65	88.4	110	149.6	150	204.0
9/16-18	75	102.0	120	163.2	170	231.2
5/8-11	90	122.4	150	204.0	220	299.2
5/8-18	100	136	180	244.8	240	326.4
3/4-10	160	217.6	260	353.6	386	525.0
3/4-16	180	244.8	300	408.0	420	571.2
7/8-9	140	190.4	400	544.0	600	816.0
7/8-14	155	210.8	440	598.4	660	897.6
1-8	220	299.2	580	788.8	900	1,244.0
1-12	240	326.4	640	870.4	1,000	1,360.0

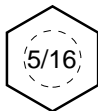
NOTES

- These torque values are to be used for all hardware excluding: locknuts, self-tapping screws, thread forming screws, sheet metal screws and socket head setscrews.
- Recommended seating torque values for locknuts:
 - for prevailing torque locknuts - use 65% of grade 5 torques.
 - for flange whizlock nuts and screws - use 135% of grade 5 torques.
- Unless otherwise noted on assembly drawings, all torque values must meet this specification.

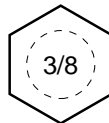
Wrench & Fastener Size Guide



1/4" Bolt or Nut
Wrench—7/16"



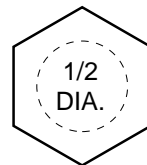
5/16" Bolt or Nut
Wrench—1/2"



3/8" Bolt or Nut
Wrench—9/16"



7/16" Bolt or Nut
Wrench (Bolt)—5/8"
Wrench (Nut)—11/16"



1/2" Bolt or Nut
Wrench—3/4"

Simplicity

MANUFACTURING, INC.
500 N. Spring Street / PO Box 997
Port Washington, WI 53074-0997 USA

www.simplicitymfg.com

© Copyright 2003 Simplicity Manufacturing, Inc.
All Rights Reserved. Printed In USA.

