



# Parts Manual



**AGCO ALLIS**

## ZERO TURN ZT SERIES RIDERS & MOWER DECKS

### 14HP RIDERS

Mfg. No.	Description
1692905	14HP, ZT Rider
1692907	14HP, ZT Rider
1692910	14HP, ZT Rider
1693140	14HP, ZT Rider (Export)
1693286	14HP, ZT Rider
1693290	14HP, ZT Rider (Export)
1693296	14HP, ZT Rider
1693300	14HP, ZT Rider

### 16HP RIDERS

Mfg. No.	Description
1692906	16HP, ZT Rider
1692908	16HP, ZT Rider
1692911	16HP, ZT Rider
1693143	16HP, ZT Rider (Export)
1693288	16HP, ZT Rider
1693292	16HP, ZT Rider (Export)
1693298	16HP, ZT Rider
1693302	16HP, ZT Rider

### MOWER DECKS

1692912	38" Mower Deck
1692913	38" Mower Deck
1692914	44" Mower Deck
1692915	44" Mower Deck



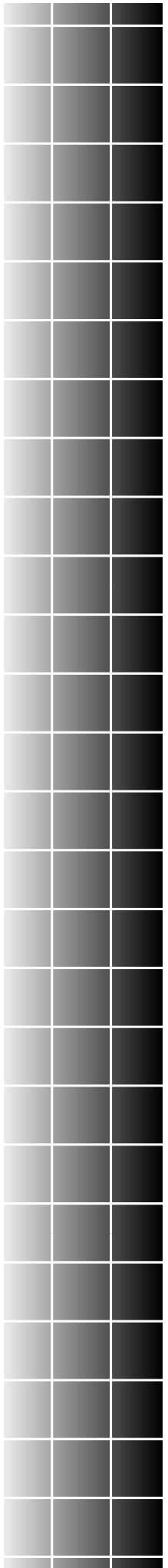


---

MANUFACTURING, INC.

500 N Spring Street / PO Box 997  
Port Washington, WI 53074-0997 USA

© Copyright 1999 Simplicity Manufacturing, Inc.  
All Rights Reserved. Printed In USA.



**This Manual Covers The Following Products:**

**14HP RIDERS**

Mfg. No.	Description	PAGES
1692905	14HP, ZT Rider	2, 6, 8, 10, 14, 18, 20, 22, 24
1692907	14HP, ZT Rider	
1692910	14HP, ZT Rider	
1693140	14HP, ZT Rider (Export)	
1693286	14HP, ZT Rider	2, 6, 8, 12, 14, 18, 20, 22, 24
1693290	14HP, ZT Rider (Export)	
1693296	14HP, ZT Rider	
1693300	14HP, ZT Rider	

**16HP RIDERS**

Mfg. No.	Description	PAGES
1692906	16HP, ZT Rider	2, 6, 8, 10, 14, 18, 20, 22, 24
1692908	16HP, ZT Rider	
1692911	16HP, ZT Rider	
1693143	16HP, ZT Rider (Export)	
1693288	16HP, ZT Rider	2, 6, 8, 12, 14, 18, 20, 22, 24
1693292	16HP, ZT Rider (Export)	
1693298	16HP, ZT Rider	
1693302	16HP, ZT Rider	

**38" MOWER DECKS**

Mfg. No.	Description	PAGES
1692912	38" Mower Deck	22, 24, 26, 28, 30
1692913	38" Mower Deck	

**44" MOWER DECKS**

Mfg. No.	Description	PAGES
1692914	44" Mower Deck	22, 24, 32, 34, 36
1692915	44" Mower Deck	

**TRACTOR COMPONENTS**

Frame, Body & Fuel System Group	2
Front Column & Dash Group	6
Engine Group	8
Electrical Group With Module	10
Electrical Group Without Module	12
Transaxle & Carrier Group	14
Transaxle SERVICE PARTS - (Eaton 778-010)	18
Wheels & Tires Group	20
Decals — Safety & Common	22
Decals — Brand & Model	24
Drive System Update Kit — 1686752	26

**MOWER DECK COMPONENTS**

38" Mower Deck - Deck, Arbors & Blades	28
38" Mower Deck - Belt, Clutch & Support	30
38" Mower Deck - Height Adjustment Rollers	32
44" Mower Deck - Housing, Arbors & Blades	34
44" Mower Deck - Belt, Clutch & Support	36
44" Mower Deck - Height Adjustment & Rollers	38

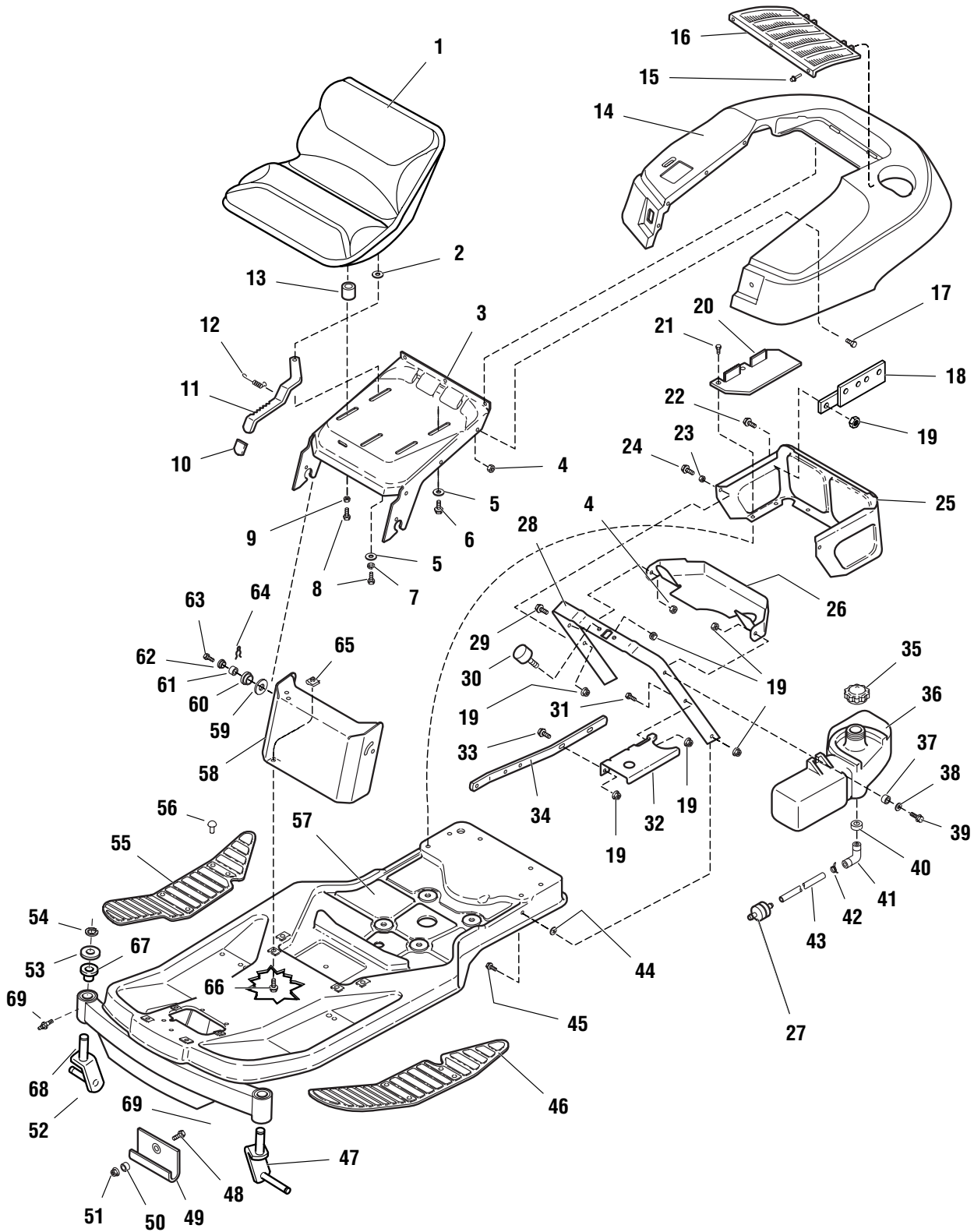
**REFERENCE INFORMATION:**

Part Number Index	40
Torque Specification Chart	Inside Back Cover

# Frame, Body & Fuel System Group

A-ZT42501C

NOTE: Unless noted otherwise, use the standard hardware torque specification chart.



**The above parts group applies to the following Mfg. Nos.:**

1692905	14HP, ZT Rider	1692910	14HP, ZT Rider	1693286	14HP, ZT Rider	1693296	14HP, ZT Rider
1692906	16HP, ZT Rider	1692911	16HP, ZT Rider	1693288	16HP, ZT Rider	1693298	16HP, ZT Rider
1692907	14HP, ZT Rider	1693140	14HP, ZT Rider (Export)	1693290	14HP, ZT Rider (Export)	1693300	14HP, ZT Rider
1692908	16HP, ZT Rider	1693143	16HP, ZT Rider (Export)	1693292	16HP, ZT Rider (Export)	1693302	16HP, ZT Rider

## Frame, Body & Fuel System Group

REF NO.	PART NO.	QTY.	DESCRIPTION
1	1718851	1	SEAT, High Back, Replacement (**See Footnote)
2	1703900	1	SPACER
3	1718945	1	SUPPORT, Seat
4	1930642	9	NUT, Hex Flange Lock, 1/4-20
5	1919381	4	WASHER, Plain
6	1930591	2	CAPSCREW, Hex Lock, 5/16-18 x 3/4
7	1917356	1	LOCKWASHER, 5/16
8	1921977	2	CAPSCREW, Hex, 5/16-18 x 1-1/4
9	1917372	1	NUT, hex, 5/16-18
10	1708881	1	CAP, Vinyl
11	1708509	1	ADJUSTER, Seat
12	1667286	1	SPRING
13	1708511	4	SPACER, Seat Slide
14	1686638	1	DECK, Seat (Orange)
14	1714625	1	DECK, Seat (Red)
15	1673320	3	POP-RIVET
16	1708504	1	SCREEN
17	1960295	8	CAPSCREW, Hex Flange Lock, 1/4-20 x 5/8
18	1715961	1	SUPPORT, Reservoirs
19	1931277	9	NUT, Hex Flange Lock, 5/16-18
20	1716027	1	PLATE, Battery
21	1925003	6	CAPSCREW, Taptite, 1/4-20 x 1/2
22	1925205	2	CAPSCREW, Hex Hd, 5/16-18 x 5/8
23	1673796	1	SPACER
24	1922127	1	CAPSCREW, Hex Hd, 5/16-18 x 1-3/4
25	1715962	1	SHROUD, Rear
26	1714078	1	DUCT, Air Inlet
27	173206	1	FILTER, Fuel
28	1717666	1	SUPPORT, Seat Deck
29	1923341	1	CAPSCREW, Hex Hd, 1/4-20 x 3/4
30	1715970	2	BUMPER
31	1921333	1	CAPSCREW, Hex Hd, 5/16-18 x 1
32	1708363	1	SUPPORT, Fuel Tank
33	1931333	1	CARRIAGE BOLT, 5/16-18 x 1
34	1708362	1	STRAP, Fuel Tank, Brace
35	1714020	1	CAP, Fuel Tank
36	1685483	1	TANK, Fuel
37	1710437	1	SPACER
38	1924940	1	WASHER
39	1931202	1	CAPSCREW, Taptite Washer Head, 5/16-18 x 1-1/4
40	1654930	1	BUSHING, Rubber
41	1674231	1	FITTING, Elbow
42	1960112	2	CLAMP, Hose
43	1717551	1	HOSE
44	1933988	2	NUT, Push Pal, 5/16
45	1930591	2	CAPSCREW, Hex Flange Whiz Lock, 5/16-18 x 3/4
46	1708525	1	FOOTREST PAD, LH
47	1715999	1	SPINDLE ASSEMBLY, LH
48	1920328	1	CAPSCREW, Hex Hd, 1/2-13 x 1-1/2
49	1716064	1	HOOK, Mower
50	1709235	1	BUSHING
51	1930644	1	NUT, Flange Lock, 1/2-13
52	1715997	1	SPINDLE ASSEMBLY, RH
53	1919394	4	WASHER
54	934712	2	E-RING Retainer

### Footnotes:

Ref Nos 55 and above on following page.

\*\* Original Seat and Arm Rests no longer available. Order replacement seat as shown.

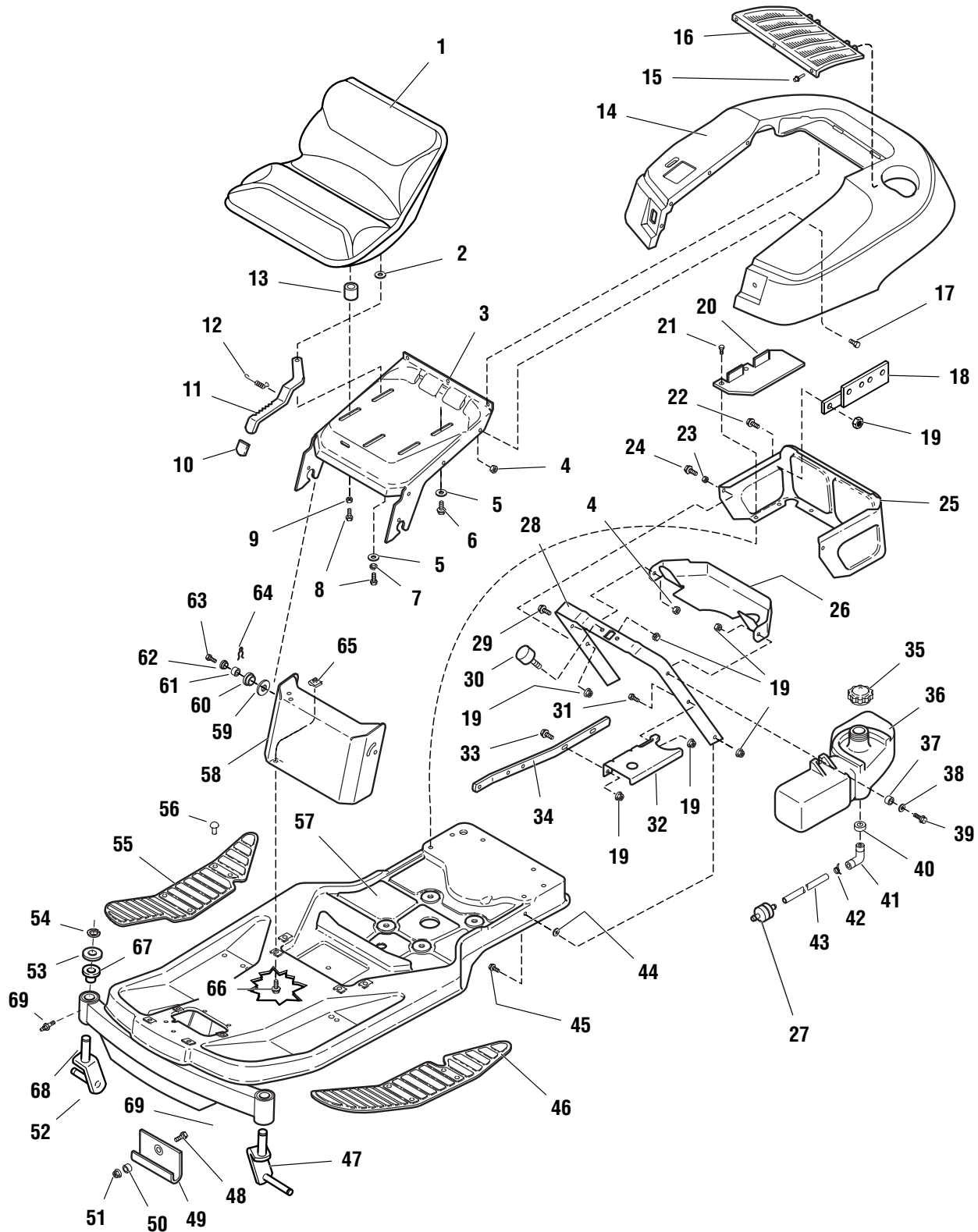
### The above parts group applies to the following Mfg. Nos.:

1692905	14HP, ZT Rider	1692910	14HP, ZT Rider	1693286	14HP, ZT Rider	1693296	14HP, ZT Rider
1692906	16HP, ZT Rider	1692911	16HP, ZT Rider	1693288	16HP, ZT Rider	1693298	16HP, ZT Rider
1692907	14HP, ZT Rider	1693140	14HP, ZT Rider (Export)	1693290	14HP, ZT Rider (Export)	1693300	14HP, ZT Rider
1692908	16HP, ZT Rider	1693143	16HP, ZT Rider (Export)	1693292	16HP, ZT Rider (Export)	1693302	16HP, ZT Rider

# Frame, Body & Fuel System Group

A-ZT42501C

NOTE: Unless noted otherwise, use the standard hardware torque specification chart.



**The above parts group applies to the following Mfg. Nos.:**

1692905	14HP, ZT Rider	1692910	14HP, ZT Rider	1693286	14HP, ZT Rider	1693296	14HP, ZT Rider
1692906	16HP, ZT Rider	1692911	16HP, ZT Rider	1693288	16HP, ZT Rider	1693298	16HP, ZT Rider
1692907	14HP, ZT Rider	1693140	14HP, ZT Rider (Export)	1693290	14HP, ZT Rider (Export)	1693300	14HP, ZT Rider
1692908	16HP, ZT Rider	1693143	16HP, ZT Rider (Export)	1693292	16HP, ZT Rider (Export)	1693302	16HP, ZT Rider

**Frame, Body & Fuel System Group**

REF NO.	PART NO.	QTY.	DESCRIPTION
55	1708524	1	FOOTREST PAD, RH
56	1704351	14	FASTENER, Panel
57	1660347	1	FRAME ASSEMBLY
58	1718376	1	PANEL, Front
59	960208	2	WASHER, Plain
60	1704626	2	SPACER, Hood, Plastic
61	1705249	2	SPACER
62	1705248	2	PIVOT, Hood
63	1960373	2	CAPSCREW, Taptite, 5/16-18 x 1
64	1704628	2	CLIP
65	1935255	4	NUT, Pal, 5/16-18
66	1930591	4	CAPSCREW, Hex Flange Whiz Lock, 5/16-18 x 3/4
67	1716038	2	BUSHING, Upper
68	1704867	2	BEARING, Lower
69	921133	2	FITTING, Grease

**Footnotes:**

**Ref Nos 1-54 on previous page.**

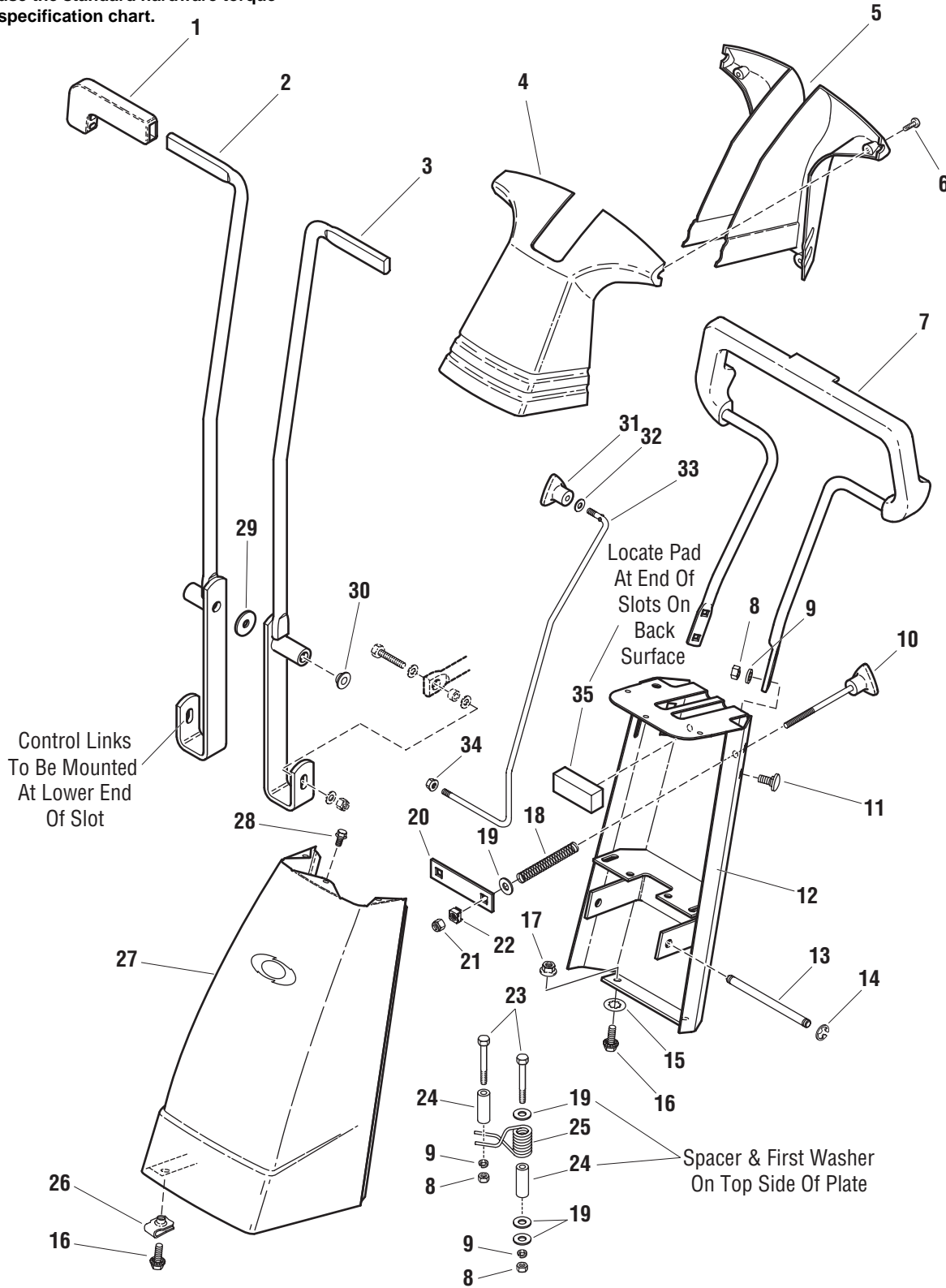
**The above parts group applies to the following Mfg. Nos.:**

1692905	14HP, ZT Rider	1692910	14HP, ZT Rider	1693286	14HP, ZT Rider	1693296	14HP, ZT Rider
1692906	16HP, ZT Rider	1692911	16HP, ZT Rider	1693288	16HP, ZT Rider	1693298	16HP, ZT Rider
1692907	14HP, ZT Rider	1693140	14HP, ZT Rider (Export)	1693290	14HP, ZT Rider (Export)	1693300	14HP, ZT Rider
1692908	16HP, ZT Rider	1693143	16HP, ZT Rider (Export)	1693292	16HP, ZT Rider (Export)	1693302	16HP, ZT Rider

# Front Column & Dash Group

A-ZT42503B

NOTE: Unless noted otherwise, use the standard hardware torque specification chart.



**The above parts group applies to the following Mfg. Nos.:**

1692905	14HP, ZT Rider	1692910	14HP, ZT Rider	1693286	14HP, ZT Rider	1693296	14HP, ZT Rider
1692906	16HP, ZT Rider	1692911	16HP, ZT Rider	1693288	16HP, ZT Rider	1693298	16HP, ZT Rider
1692907	14HP, ZT Rider	1693140	14HP, ZT Rider (Export)	1693290	14HP, ZT Rider (Export)	1693300	14HP, ZT Rider
1692908	16HP, ZT Rider	1693143	16HP, ZT Rider (Export)	1693292	16HP, ZT Rider (Export)	1693302	16HP, ZT Rider



## Front Column & Dash Group

REF NO.	PART NO.	QTY.	DESCRIPTION
1	1716002	2	GRIP, Control Handle
2	1717155	1	CONTROL LEVER ASSEMBLY, RH
3	1717154	1	CONTROL LEVER ASSEMBLY, LH
4	1717158	1	ENCLOSURE, Handrail, Front
5	1717157	1	ENCLOSURE, Handrail, Rear
6	1717167	4	SCREW, Self Tapping #10-24 x 1/2
7	1716073	1	HANDRAIL ASSEMBLY
8	1917372	6	NUT, Hex Hd. 5/16-18
9	1917356	6	LOCKWASHER, 5/16
10	1716079	2	KNOB, 5/16-18 x 4-3/8
11	1931333	4	BOLT, Carriage Sh. Nk. 5/16-18 x 3/4
12	1719376	1	DASH SUPPORT ASSEMBLY
13	1716004	1	SHAFT, Control Handles
14	928197	2	RING, "E" External #37
15	1933988	2	NUT, Push, 5/16
16	1930591	6	SCREW, Hex, Wz. Lk., 5/16-18 x 3/4
17	1931277	2	NUT, Hex, Wz. Fl., 5/16-18
18	8191045	2	SPRING
19	1919326	5	WASHER, Plain, 5/16
20	1716036	1	BAR, Stop
21	1919438	2	NUT, Hex Lock ESNA 5/16-18
22	1920470	2	NUT, Retainer Speed 5/16-18
23	1921719	2	CAPSCREW, Hex Hd. 5/16-18 x 2-1./2
24	1713588	2	SPACER
25	1717165	1	SPRING, Torsion, RH
25	1718272	1	SPRING, Torsion, LH
26	1935255	4	NUT, Pal, 5/16-18
27	1686750	1	HEADLIGHT KIT, Optional (with orange shroud - not shown)
27	1686751	1	HEADLIGHT KIT, Optional (with red shroud - not shown)
27	1715998	1	SHROUD, Front (without headlight)
28	1925003	3	SCREW, Hex Wash. Hd. Taptite, 1/4-20 x 1/2
29	1922611	1	WASHER
30	1665819	4	BUSHING
31	1713855	1	KNOB
32	1921319	1	WASHER, Plain 1/4
33	1715977	1	ROD, Parking Brake
34	1930642	1	NUT, Hex Flange Center Lock
35	1718758	1	PAD, Neoprene

### Footnotes:

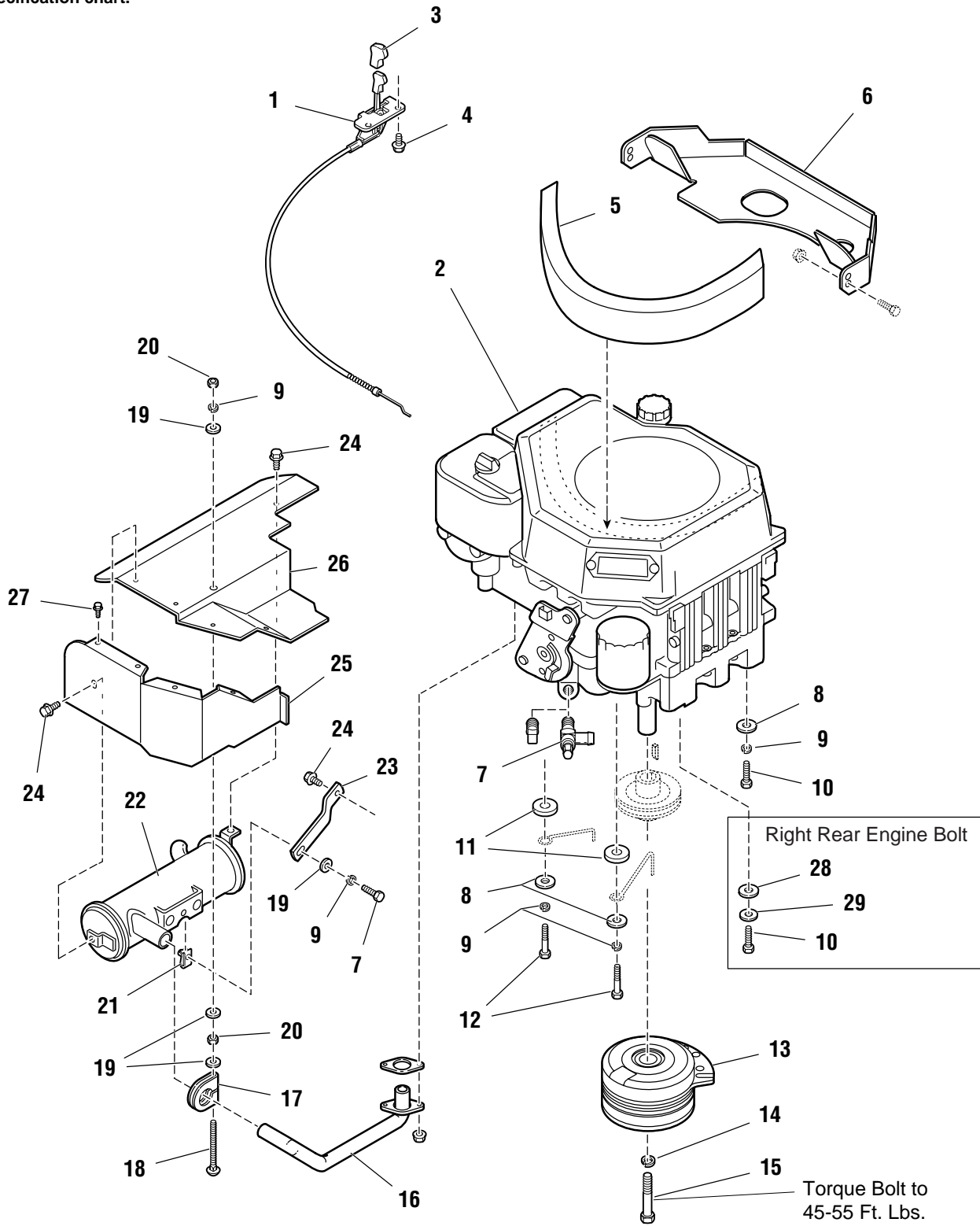
#### The above parts group applies to the following Mfg. Nos.:

1692905	14HP, ZT Rider	1692910	14HP, ZT Rider	1693286	14HP, ZT Rider	1693296	14HP, ZT Rider
1692906	16HP, ZT Rider	1692911	16HP, ZT Rider	1693288	16HP, ZT Rider	1693298	16HP, ZT Rider
1692907	14HP, ZT Rider	1693140	14HP, ZT Rider (Export)	1693290	14HP, ZT Rider (Export)	1693300	14HP, ZT Rider
1692908	16HP, ZT Rider	1693143	16HP, ZT Rider (Export)	1693292	16HP, ZT Rider (Export)	1693302	16HP, ZT Rider

# Engine Group

A-ZT42504B

NOTE: Unless noted otherwise, use the standard hardware torque specification chart.



**The above parts group applies to the following Mfg. Nos.:**

1692905	14HP, ZT Rider	1692910	14HP, ZT Rider	1693286	14HP, ZT Rider	1693296	14HP, ZT Rider
1692906	16HP, ZT Rider	1692911	16HP, ZT Rider	1693288	16HP, ZT Rider	1693298	16HP, ZT Rider
1692907	14HP, ZT Rider	1693140	14HP, ZT Rider (Export)	1693290	14HP, ZT Rider (Export)	1693300	14HP, ZT Rider
1692908	16HP, ZT Rider	1693143	16HP, ZT Rider (Export)	1693292	16HP, ZT Rider (Export)	1693302	16HP, ZT Rider

## Engine Group

REF NO.	PART NO.	QTY.	DESCRIPTION
1	1714065	1	THROTTLE CONTROL ASSEMBLY
2	*	1	ENGINE ASSEMBLY, 14 HP Kohler
2	*	1	ENGINE ASSEMBLY, 16 HP Kohler
3	1713846	1	KNOB, Throttle
4	1960536	2	SCREW, Plastite, 1/4-10 x 1/2
5	1709055	1	SEAL, Air Inlet
6	1708725	1	AIR DUCT
7	1708405	1	VALVE, Shut Off
8	1919381	3	WASHER, Plain, 5/16
9	1917356	5	LOCKWASHER, 5/16
10	1960405	2	SCREW, Hex, M08 - 1.25 x 30mm
11	1933263	2	WASHER, Plain
12	1950021	2	CAPSCREW, Hex Hd., M08 - 1.25 x 40mm
13	1717664	1	CLUTCH, Electric
14	1918199	1	LOCKWASHER, 7/16
15	1960351	1	CAPSCREW, Hex, 7/16-20 x 3-1/4
16	1713502	1	PIPE, Exhaust
17	1676183	1	CLAMP, Muffler
18	1960483	1	CARRIAGE BOLT, 5/16-18 x 3-1/4
19	1919326	4	WASHER, 5/16
20	1917372	2	NUT, Hex, 5/16-18
21	1935255	1	NUT, Speed, 5/16-18
22	1708416	1	MUFFLER ASSEM.
23	1713557	1	SUPPORT, Muffler
24	1924856	3	SCREW, Hex, Taptite, 5/16-18 x 1/2
25	1716080	1	AIR DUCT, Bottom
26	1716024	1	SHIELD, Muffler
27	1923735	4	SCREW, Hex, Thd. Form, #10-16 x 3/8
28	1924874	1	WASHER, Plain, 5/16
29	1923300	1	LOCKWASHER, Internal Tooth, 5/16
30	1708264	1	WASHER, Hex
31	1921333	1	CAPSCREW, Hex, 5/16-18

### Footnotes:

\* See your local Kohler distributor for Service Parts.

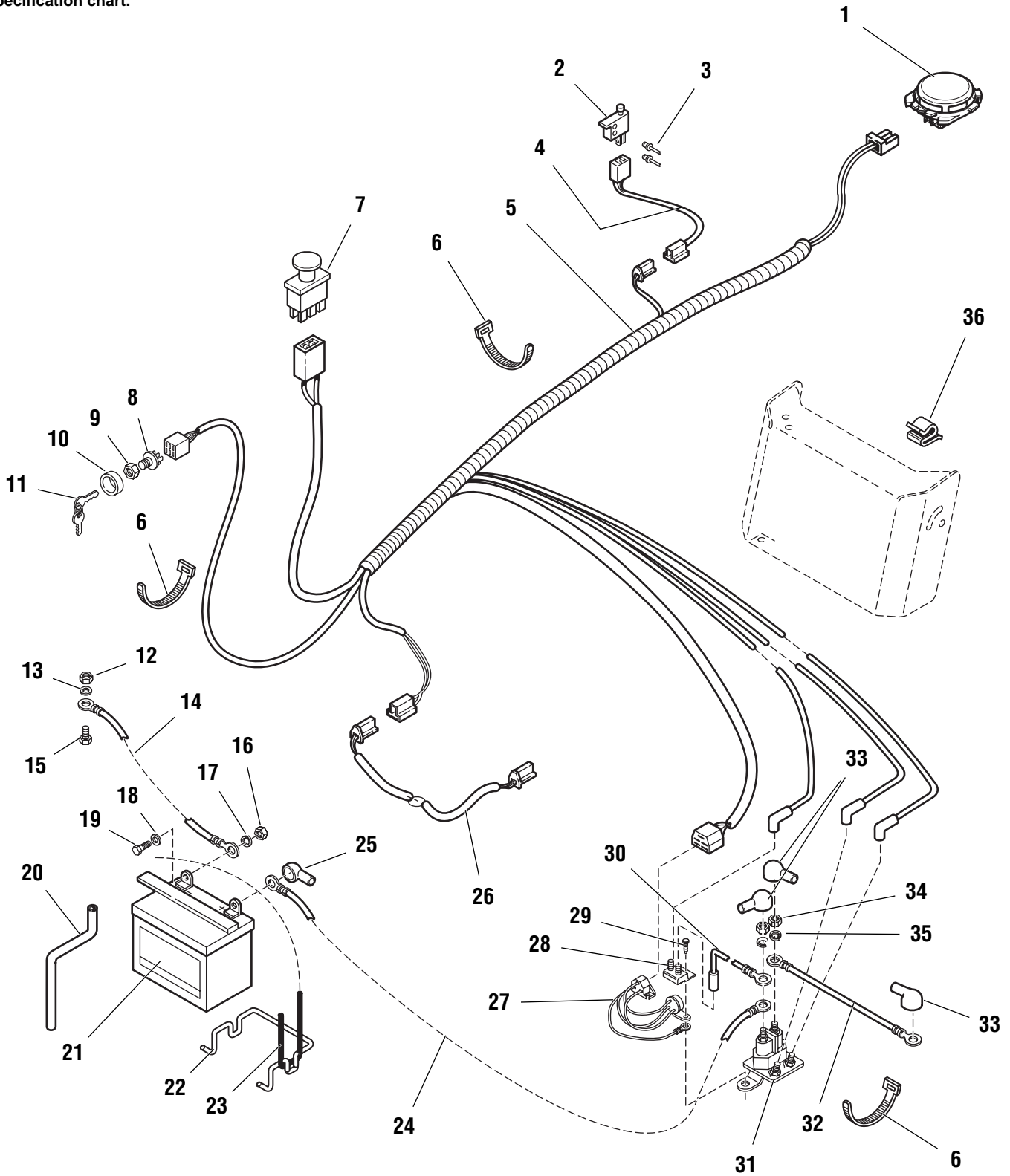
### The above parts group applies to the following Mfg. Nos.:

1692905	14HP, ZT Rider	1692910	14HP, ZT Rider	1693286	14HP, ZT Rider	1693296	14HP, ZT Rider
1692906	16HP, ZT Rider	1692911	16HP, ZT Rider	1693288	16HP, ZT Rider	1693298	16HP, ZT Rider
1692907	14HP, ZT Rider	1693140	14HP, ZT Rider (Export)	1693290	14HP, ZT Rider (Export)	1693300	14HP, ZT Rider
1692908	16HP, ZT Rider	1693143	16HP, ZT Rider (Export)	1693292	16HP, ZT Rider (Export)	1693302	16HP, ZT Rider

# Electrical Group With Module

A-ZT42505A

NOTE: Unless noted otherwise, use the standard hardware torque specification chart.



**The above parts group applies to the following Mfg. Nos.:**

1692905	14HP, ZT Rider	1692910	14HP, ZT Rider
1692906	16HP, ZT Rider	1692911	16HP, ZT Rider
1692907	14HP, ZT Rider	1693140	14HP, ZT Rider (Export)
1692908	16HP, ZT Rider	1693143	16HP, ZT Rider (Export)

## Electrical Group With Module

REF NO.	PART NO.	QTY.	DESCRIPTION
1	1714320	1	SWITCH, Seat
2	1701580	1	SWITCH, Neutral Start
3	1675043	2	POP-RIVET
4	1715976	1	WIRE ASSEMBLY, Neutral
5	1715955	1	HARNESS, Wiring
6	1701011	3	TIE, Self-Locking
7	1716332	1	SWITCH, PTO, Electric Clutch
8	1716061	1	SWITCH, Ignition (6 pole)
9	1717549	1	NUT, Hex
10	1717550	1	COVER, Keyswitch
11	1717163	1	KEYS (Set of 2 Keys)
12	1931211	1	NUT, Hex Flange Whiz Lock, 3/8-16
13	920427	1	WASHER, Lock, External Tooth, 3/8
14	1707056	1	CABLE, Battery Ground
15	1922586	1	CAPSCREW, Hex Head, 3/8-16 x 5/8
16	1916622	2	NUT, Hex, 1/4-20
17	1916964	2	WASHER, Lock, 1/4
18	1921319	2	WASHER
19	1923341	2	CAPSCREW, Hex Head, 1/4-20 x 3/4
20	1612103	1	TUBE, Vent
21	1685215	1	BATTERY
22	1667805	1	BRACE, Battery
23	1665872	1	STRAP, Battery
24	1703851	1	CABLE, Battery to Solenoid
25	1709086	1	BOOT, Insulator
26	1708882	1	WIRE ASSEMBLY, Clutch
27	1713642	1	MODULE, Interlock
28	1665238	1	CIRCUIT BREAKER
29	1925003	2	CAPSCREW, Hex Washer Head, Taptite, 1/4-20 x 1/2
30	1665237	1	WIRE ASSEMBLY
31	1685290	1	SOLENOID
32	1709088	1	CABLE, Solenoid to Starter
33	122023	3	COVER, Terminal
34	1920263	2	NUT, Hex, 5/16-24
35	1917356	2	WASHER, Lock, 5/16
36	1715956	1	CLIP

### Footnotes:

---

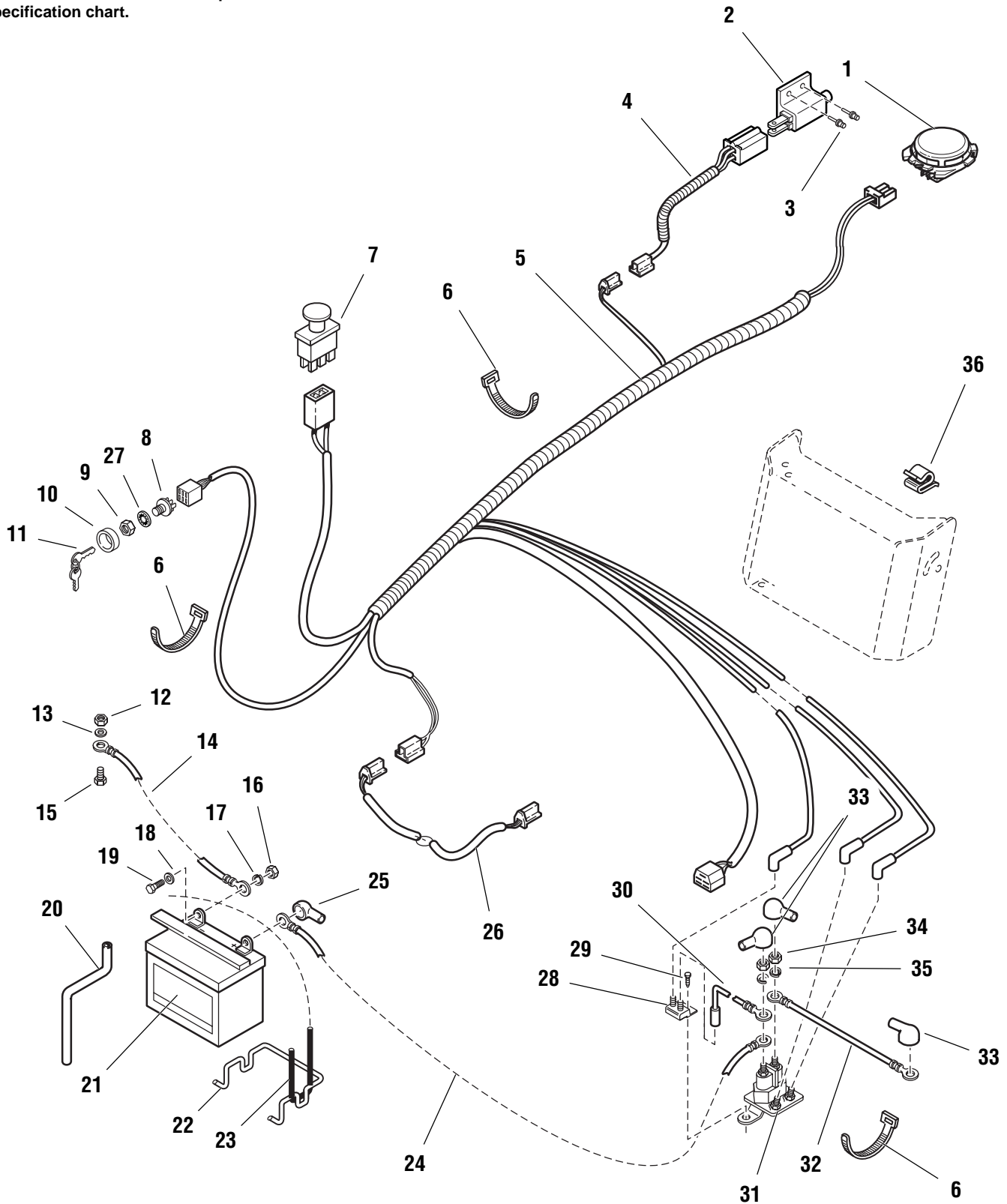
**The above parts group applies to the following Mfg. Nos.:**

1692905	14HP, ZT Rider	1692910	14HP, ZT Rider
1692906	16HP, ZT Rider	1692911	16HP, ZT Rider
1692907	14HP, ZT Rider	1693140	14HP, ZT Rider (Export)
1692908	16HP, ZT Rider	1693143	16HP, ZT Rider (Export)

# Electrical Group without Module

A-ZT42505B

NOTE: Unless noted otherwise, use the standard hardware torque specification chart.



**The above parts group applies to the following Mfg. Nos.:**

1693286	14HP, ZT Rider	1693296	14HP, ZT Rider
1693288	16HP, ZT Rider	1693298	16HP, ZT Rider
1693290	14HP, ZT Rider (Export)	1693300	14HP, ZT Rider
1693292	16HP, ZT Rider (Export)	1693302	16HP, ZT Rider

## Electrical Group without Module

REF NO.	PART NO.	QTY.	DESCRIPTION
1	1718981	1	SWITCH, Seat
2	1717050	1	SWITCH, Neutral Start
3	1675043	2	POP-RIVET
4	1718952	1	WIRE ASSEMBLY, Ground
5	1715955	1	HARNESS, Wiring
6	1701011	3	TIE, Self-Locking
7	1716332	1	SWITCH, PTO, Electric Clutch
8	1716061	1	SWITCH, Ignition (6 pole)
9	1717549	1	NUT, Hex
10	1717550	1	COVER, Keyswitch
11	1717163	1	KEYS (Set of 2 Keys)
12	1931211	1	NUT, Hex Flange Whiz Lock, 3/8-16
13	920427	1	WASHER, Lock, External Tooth, 3/8
14	1707056	1	CABLE, Battery Ground
15	1922586	1	CAPSCREW, Hex Head, 3/8-16 x 5/8
16	1916622	2	NUT, Hex, 1/4-20
17	1916964	2	WASHER, Lock, 1/4
18	1921319	2	WASHER
19	1923341	2	CAPSCREW, Hex Head, 1/4-20 x 3/4
20	1612103	1	TUBE, Vent
21	1685215	1	BATTERY
22	1667805	1	BRACE, Battery
23	1665872	1	STRAP, Battery
24	1703851	1	CABLE, Battery to Solenoid
25	1709086	1	BOOT, Insulator
26	1718950	1	WIRE ASSEMBLY, Clutch
27	1960547	1	WASHER, Internal Tooth, 5/8
28	1665238	1	CIRCUIT BREAKER
29	1925003	2	CAPSCREW, Hex Washer Head, Taptite, 1/4-20 x 1/2
30	1665237	1	WIRE ASSEMBLY
31	1685290	1	SOLENOID
32	1709088	1	CABLE, Solenoid to Starter
33	122023	3	COVER, Terminal
34	1920263	2	NUT, Hex, 5/16-24
35	1917356	2	WASHER, Lock, 5/16
36	1715956	1	CLIP

### Footnotes:

---

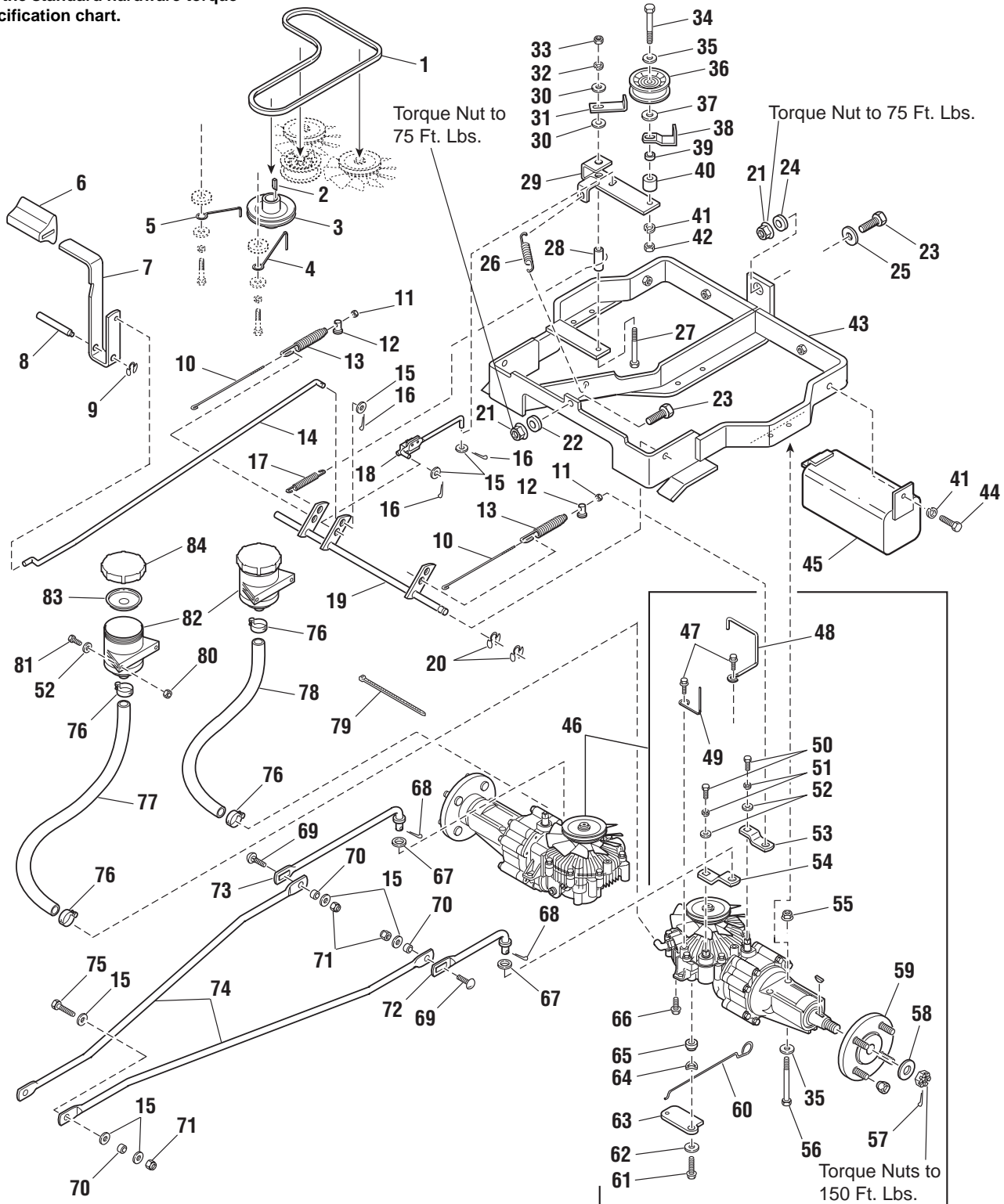
#### The above parts group applies to the following Mfg. Nos.:

1693286	14HP, ZT Rider	1693296	14HP, ZT Rider
1693288	16HP, ZT Rider	1693298	16HP, ZT Rider
1693290	14HP, ZT Rider (Export)	1693300	14HP, ZT Rider
1693292	16HP, ZT Rider (Export)	1693302	16HP, ZT Rider

# Transaxle & Carrier Group

A-ZT42506C

**NOTE:** Unless noted otherwise, use the standard hardware torque specification chart.



**The above parts group applies to the following Mfg. Nos.:**

1692905	14HP, ZT Rider	1692910	14HP, ZT Rider	1693286	14HP, ZT Rider	1693296	14HP, ZT Rider
1692906	16HP, ZT Rider	1692911	16HP, ZT Rider	1693288	16HP, ZT Rider	1693298	16HP, ZT Rider
1692907	14HP, ZT Rider	1693140	14HP, ZT Rider (Export)	1693290	14HP, ZT Rider (Export)	1693300	14HP, ZT Rider
1692908	16HP, ZT Rider	1693143	16HP, ZT Rider (Export)	1693292	16HP, ZT Rider (Export)	1693302	16HP, ZT Rider



## Transaxle & Carrier Group

REF NO.	PART NO.	QTY.	DESCRIPTION
1**	1705142	1	V-BELT
2**	105337	1	KEY
3**	1715954	1	PULLEY ASSEMBLY
4	1704419	1	BELT KEEPER, Engine Pulley
5	158499	1	BELT KEEPER, Engine Pulley
6	1704849	1	PAD, Pedal
7	1706264	1	LEVER CLUTCH
8	1708409	1	PIVOT, Brake
9	1708554	1	RING, Klip, Ret. 3/8
10	1716078	2	ROD, Brake
11	1933896	2	NUT, Hex Lock ESNA 10-24
12	1716077	2	PIN TRUNNION
13	1701996	2	SPRING, Extension
14	1706260	1	ROD, Clutch, Front
15	1919326	11	WASHER, Plain 5/16
16	1918447	3	PIN, Cotter, 3/32 x 1
17	159106	1	SPRING
18	1716035	1	ROD, Clutch, Rear
19	1715973	1	PIVOT SHAFT ASSEMBLY
20	1703805	2	RING, Klip, Ret., 1/2
21	1930644	2	NUT, Hex, Flange Lk., 1/2-13
22	1719683	1	BUSHING
23	1921176	2	CAPSCREW, Hex Hd., 1/2-13 x 1-1/4
24	1719725	1	BUSHING
25	1924361	1	WASHER, Plain, 1/2
26	1707510	1	SPRING
27	1921719	1	CAPSCREW, Hex Hd., 5/16-18 x 2-1/2
28	1713588	1	SPACER, Pivot
29	1715972	1	IDLER ARM ASSEMBLY
30	1924874	2	WASHER, Plain, 5/16
31**	1717656	1	BELT STOP, Flat
32	1917356	1	LOCKWASHER, Spring, 5/16
33	1917372	1	NUT, Hex, 5/16-18
34	1921972	1	CAPSCREW, Hex Hd., 3/8-16 x 2-1/2
35	1924940	5	WASHER, Plain 3/8
36	1708030	1	PULLEY, Idler, Flat
37	1922755	1	WASHER, Plain, 3/8
38	1708352	1	GUARD, Spring
39	1611705	1	SPACER
40	1667812	1	SPACER
41	1916965	3	LOCKWASHER, Spring, 3/8
42	1916950	1	NUT, Hex, 3/8-16
43	1716094	1	FRAME ASSEMBLY
44	1923701	2	CAPSCREW, Hex Hd., 3/8-16 x 2
45	1716086	2	WEIGHT ASSEMBLY
46	1716005	2	* TRANSMISSION, Eaton 778-010
47	1925592	3	SCREW, Hex Wshr Hd Taptite, 1/4-20 x 3/4
48**	1716008	2	GUIDE, Belt, 3 Bends
49**	1716007	1	GUIDE, Belt, 1 Bend
50	1922234	4	CAPSCREW, Hex Hd. 1/4-28 x 5/8
51	1916964	4	LOCKWASHER, Spring 1/4
52	1921319	8	WASHER, Plain, 1/4
53	1716044	2	ARM, Transmission Brake

### Footnotes:

**Ref Nos 54 and above on following page.**

\* TRANSEXLE SERVICE PARTS BREAKDOWN WILL BE FOUND ON PAGES 18 & 19.

\*\* These parts may have been replaced with ZT Drive System Update Kit 1686752. See pages 26 & 27 for Kit component part numbers.

NOTE: Riders equipped with Kit 1686752 have two hoses connected to each reservoir.

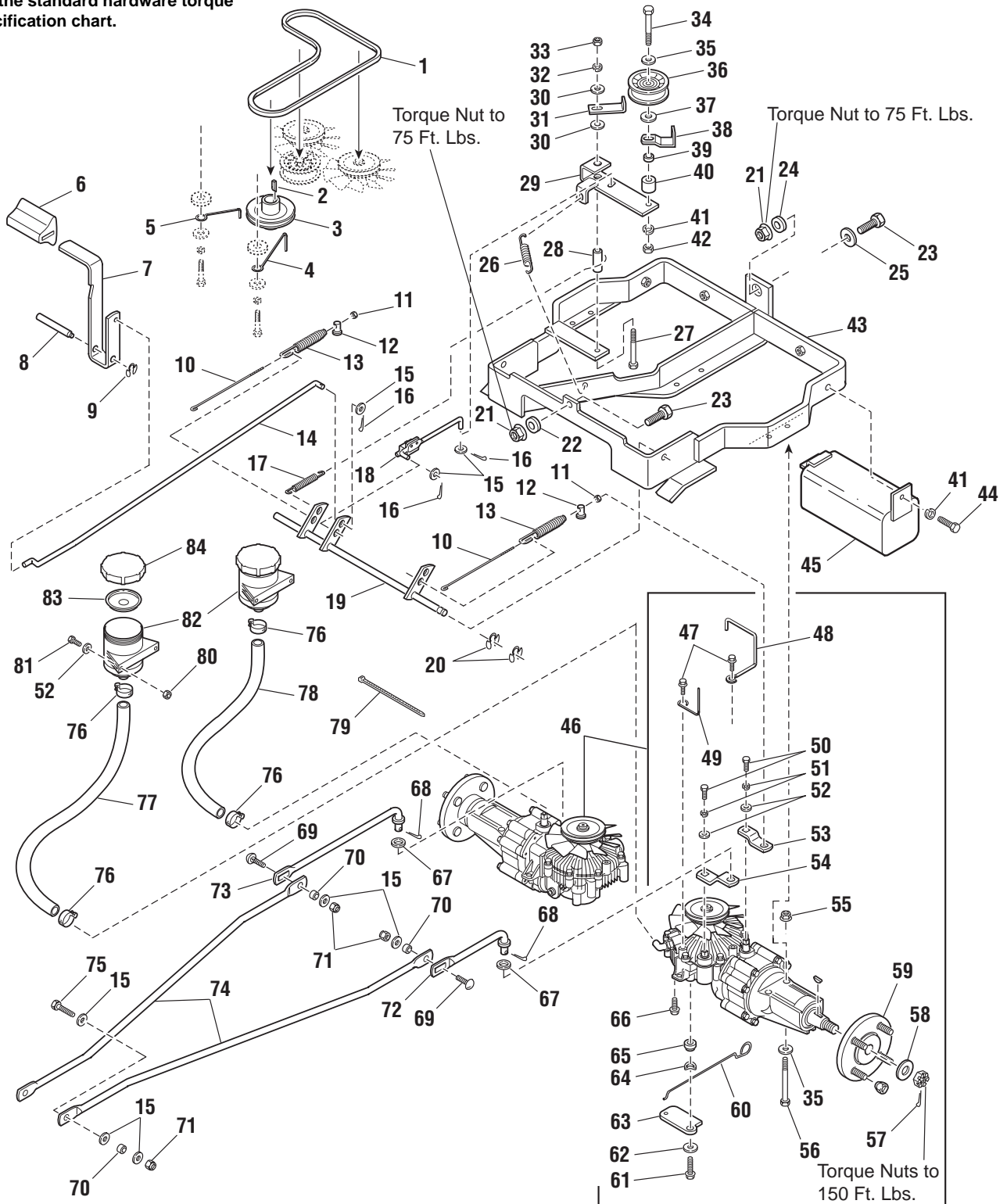
### The above parts group applies to the following Mfg. Nos.:

1692905	14HP, ZT Rider	1692910	14HP, ZT Rider	1693286	14HP, ZT Rider	1693296	14HP, ZT Rider
1692906	16HP, ZT Rider	1692911	16HP, ZT Rider	1693288	16HP, ZT Rider	1693298	16HP, ZT Rider
1692907	14HP, ZT Rider	1693140	14HP, ZT Rider (Export)	1693290	14HP, ZT Rider (Export)	1693300	14HP, ZT Rider
1692908	16HP, ZT Rider	1693143	16HP, ZT Rider (Export)	1693292	16HP, ZT Rider (Export)	1693302	16HP, ZT Rider

# Transaxle & Carrier Group

A-ZT42506C

**NOTE:** Unless noted otherwise, use the standard hardware torque specification chart.



**The above parts group applies to the following Mfg. Nos.:**

1692905	14HP, ZT Rider	1692910	14HP, ZT Rider	1693286	14HP, ZT Rider	1693296	14HP, ZT Rider
1692906	16HP, ZT Rider	1692911	16HP, ZT Rider	1693288	16HP, ZT Rider	1693298	16HP, ZT Rider
1692907	14HP, ZT Rider	1693140	14HP, ZT Rider (Export)	1693290	14HP, ZT Rider (Export)	1693300	14HP, ZT Rider
1692908	16HP, ZT Rider	1693143	16HP, ZT Rider (Export)	1693292	16HP, ZT Rider (Export)	1693302	16HP, ZT Rider

## Transaxle & Carrier Group

REF NO.	PART NO.	QTY.	DESCRIPTION
54	1706388	2	BRACKET, Offset
55	1930645	4	NUT, Hex Lock Cent. Fl. 3/8-16
56	1922918	4	CAPSCREW, Hex Hd. 3/8-16 x 3-1/4
57	1923500	2	PIN, Cotter 1/8 x 1-3/4
58	1960160	2	WASHER, Plain 3/4
59	1715990	2	HUB, 4 Bolt, Tapered Bore w/Studs
60	1715957	2	ROD, Actuator, Hydro Release Valve
61	1931202	2	SCREW, Hex Wshr. Hd. Taptite 5/16-18 x 1-1/4
62	1919381	2	WASHER, 5/16
63	1715968	2	ACTUATOR, Hydro Release Valve
64	170157	2	WASHER, Wave
65	1705590	2	SPACER
66	1960594	4	SCREW, Hex Wshr Hd Taptite 5/16-18 x 3/4
67	1960027	2	WASHER, Plain, 1/2
68	1918451	2	PIN, Cotter, 1/8 x 3/4
69	1931335	2	BOLT, Carriage, 5/16-18 x 1
70	1703900	4	SPACER, .328 x .500 x .218
71	1919438	4	NUT, Hex, Lock ESNA, 5/16-18
72	1715959	1	LINK, Control, Rear LH
73	1715958	1	LINK, Control, Rear RH
74	1715960	2	LINK, Control, Front
75	1921977	2	CAPSCREW, Hex Hd., 5/16-18 x 1-1/4
76**	960266	4	CLAMP, Hose
77**	1716019	1	HOSE, LH Trans, Rear Res.
78**	1716018	1	HOSE, RH Trans, Front Res.
79	1701011	1	TIE, Self Locking, 15"
80	1930641	4	NUT, Hex Flange Whiz Lock, 1/4-20
81	1921959	4	CAPSCREW, Hex Hd., 1/4-20 x 5/8
82**	1715981	2	RESERVOIR ASSEMBLY (Includes 83 & 84)
83	1701435	2	INNER CAP
84	1700443	2	CAP

### Footnotes:

**Ref Nos 1-53 on previous page.**

\* TRANSAXLE SERVICE PARTS BREAKDOWN WILL BE FOUND ON PAGES 18 & 19.

\*\* These parts may have been replaced with ZT Drive System Update Kit 1686752. See pages 26 & 27 for Kit component part numbers.

NOTE: Riders equipped with Kit 1686752 have two hoses connected to each reservoir.

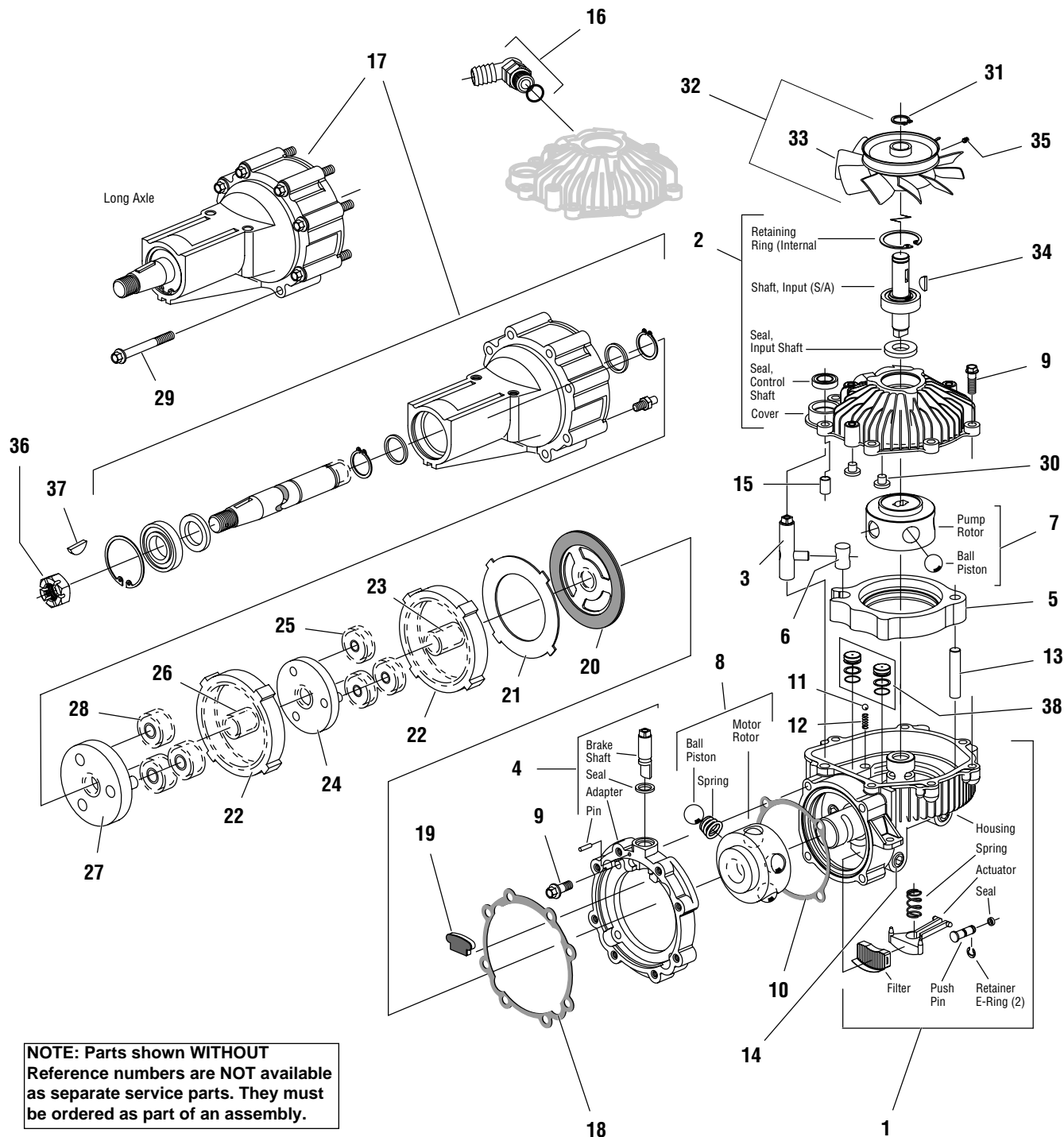
### The above parts group applies to the following Mfg. Nos.:

1692905	14HP, ZT Rider	1692910	14HP, ZT Rider	1693286	14HP, ZT Rider	1693296	14HP, ZT Rider
1692906	16HP, ZT Rider	1692911	16HP, ZT Rider	1693288	16HP, ZT Rider	1693298	16HP, ZT Rider
1692907	14HP, ZT Rider	1693140	14HP, ZT Rider (Export)	1693290	14HP, ZT Rider (Export)	1693300	14HP, ZT Rider
1692908	16HP, ZT Rider	1693143	16HP, ZT Rider (Export)	1693292	16HP, ZT Rider (Export)	1693302	16HP, ZT Rider

# Transaxle SERVICE PARTS (Eaton 778-010)

A-ZT42508A

**NOTE:** Unless noted otherwise, use the standard hardware torque specification chart.



**NOTE:** Parts shown WITHOUT Reference numbers are NOT available as separate service parts. They must be ordered as part of an assembly.

**The above parts group applies to the following Mfg. Nos.:**

1692905	14HP, ZT Rider	1692910	14HP, ZT Rider	1693286	14HP, ZT Rider	1693296	14HP, ZT Rider
1692906	16HP, ZT Rider	1692911	16HP, ZT Rider	1693288	16HP, ZT Rider	1693298	16HP, ZT Rider
1692907	14HP, ZT Rider	1693140	14HP, ZT Rider (Export)	1693290	14HP, ZT Rider (Export)	1693300	14HP, ZT Rider
1692908	16HP, ZT Rider	1693143	16HP, ZT Rider (Export)	1693292	16HP, ZT Rider (Export)	1693302	16HP, ZT Rider

## Transaxle SERVICE PARTS (Eaton 778-010)

REF NO.	PART NO.	QTY.	DESCRIPTION
1	1716014	1	HOUSING ASSEMBLY, (Includes Housing, Filter, Actuator. Spring, E-Ring Retainer, Actuator Pin, & Seal)
2	1716015	1	COVER ASSEMBLY, Input (Includes Retaining Ring, Shaft, Input Shaft Seal, & Control Shaft Seal)
3	1716016	1	SHAFT, Control
4	1716017	1	ADAPTER/BRAKE ASSEMBLY (Includes Dowel Pin, Brake Shaft, Adapter, & Seal)
5	1716039	1	CAM RING
6	1702251	1	INSERT
7	1716045	1	ROTOR/BALL, Pump
8	1716046	1	ROTOR/BALL/SPRING, Motor
9	1702268	11	SCREW, Self Tap
10	1716047	1	GASKET
11	1702251	1	BALL (Grade 200)
12	1716049	1	SPRING
13	1716050	1	DOWEL
14**	1716051	1	PLUG, Socket Pipe
15	1716054	1	BUSHING, Dowel
16**	1669954	1	BARB FITTING (Includes O-Ring)
17	1716056	1	AXLE HOUSING ASSEMBLY, Tapered (Includes Axle Shaft, Internal Retaining Ring, Housing, Radial Lip Seal, Ball Bearing, External Retaining Ring, Thrust Washer, & Magnet)
18	1716057	1	GASKET, Axle Housing
19	1708135	1	PAD, Friction
20	1708136	1	PLATE, Reaction
21	1708137	1	PLATE, Backup
22	1708139	2	GEAR, Ring 54T
23	1708138	1	18T SUN GEAR, First
24	1716058	1	18T PRIMARY CARRIER
25	1708140	3	18T PLANET GEAR, First
26	1708142	1	18T SUN GEAR, Second
27	1708144	1	SECONDARY CARRIER
28	1708143	3	18T PLANET GEAR, Second
29	1708133	8	SCREW, Hex Flange, 1/4-20
30	1702258	2	BUTTON
31	927731	1	RING, Retaining (External)
32**	1716059	1	FAN & PULLEY ASSEMBLY (Includes Fan, Ref 33 below).
33	1718293	1	FAN
34	930672	1	KEY, Woodruff (Input Shaft)
35	1928692	1	SCREW, Hex Socket Set, 1/4-20
36	1716060	1	NUT, Slotted Hex (Tapered Shaft)
37	905126	1	KEY, Woodruff (Tapered Shaft)
38	*	2	PISTON
39	1719442	1	SEAL KIT, Complete (Not Shown - Includes Ref Nos 10, 18, and additional Seals & Gaskets)

### Footnotes:

\* Not a Servicable Part.

NOTE: Parts shown WITHOUT Reference numbers are NOT available as separate service parts. They must be ordered as part of an assembly.

\*\* These parts may have been replaced with ZT Drive System Update Kit 1686752. See pages 26 & 27 for Kit component part numbers.

NOTE: Riders equipped with Kit 16876752 have two hoses connected to eac reservoir.

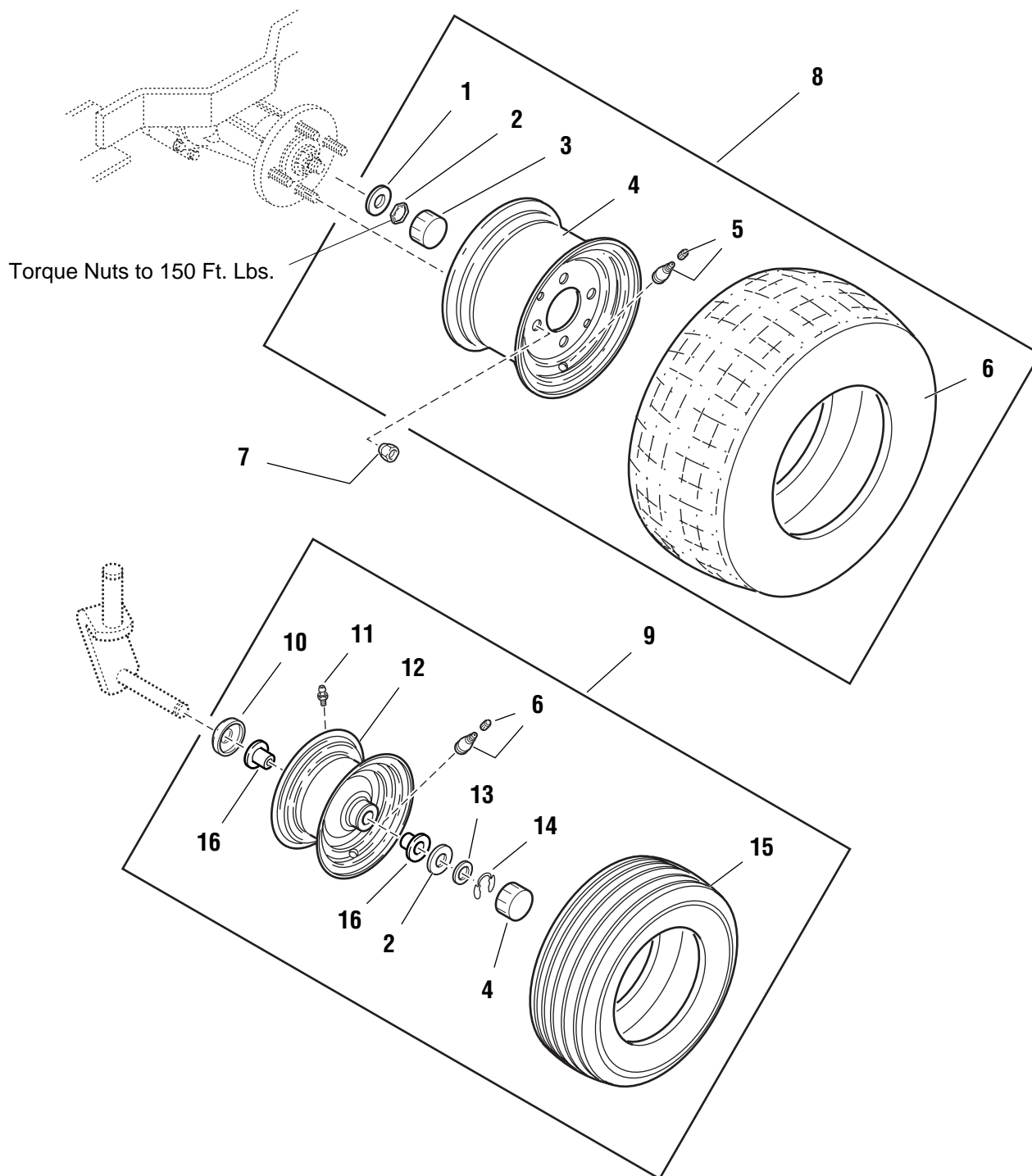
### The above parts group applies to the following Mfg. Nos.:

1692905	14HP, ZT Rider	1692910	14HP, ZT Rider	1693286	14HP, ZT Rider	1693296	14HP, ZT Rider
1692906	16HP, ZT Rider	1692911	16HP, ZT Rider	1693288	16HP, ZT Rider	1693298	16HP, ZT Rider
1692907	14HP, ZT Rider	1693140	14HP, ZT Rider (Export)	1693290	14HP, ZT Rider (Export)	1693300	14HP, ZT Rider
1692908	16HP, ZT Rider	1693143	16HP, ZT Rider (Export)	1693292	16HP, ZT Rider (Export)	1693302	16HP, ZT Rider

## Wheels & Tires Group

A-ZT42509B

NOTE: Unless noted otherwise,  
use the standard hardware torque  
specification chart.



**The above parts group applies to the following Mfg. Nos.:**

1692905	14HP, ZT Rider	1692910	14HP, ZT Rider	1693286	14HP, ZT Rider	1693296	14HP, ZT Rider
1692906	16HP, ZT Rider	1692911	16HP, ZT Rider	1693288	16HP, ZT Rider	1693298	16HP, ZT Rider
1692907	14HP, ZT Rider	1693140	14HP, ZT Rider (Export)	1693290	14HP, ZT Rider (Export)	1693300	14HP, ZT Rider
1692908	16HP, ZT Rider	1693143	16HP, ZT Rider (Export)	1693292	16HP, ZT Rider (Export)	1693302	16HP, ZT Rider

## Wheels & Tires Group

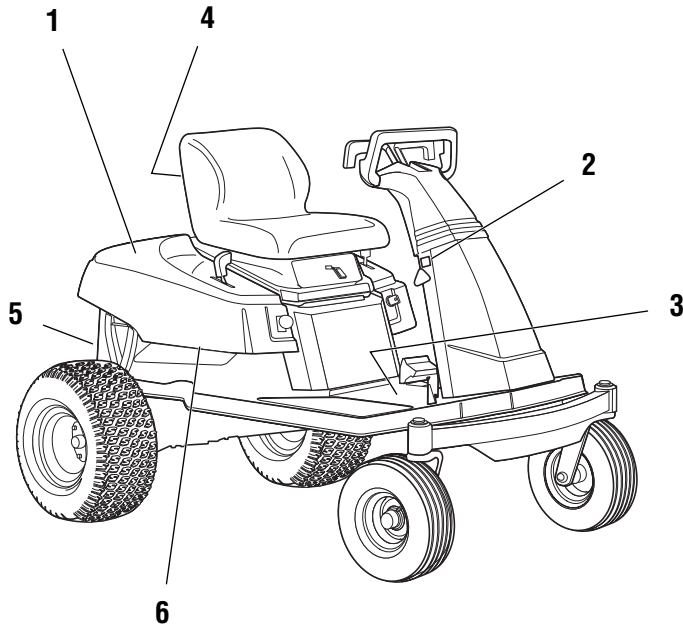
REF NO.	PART NO.	QTY.	DESCRIPTION
1	960202	4	WASHER
2	1716099	2	NUT, Hex Lock Pal, 3/4-20
3	1673333	4	CAP
4	1716003	2	REAR WHEEL ASSEMBLY (14HP Models)
4	1716012	2	REAR WHEEL ASSEMBLY (16HP Models)
5	172353	2	VALVE STEM & CAP
6	1715031	2	TIRE, 18 x 8.50-8
7	6155720	8	NUT, Lug
8	1715989	2	WHEEL & TIRE ASSEMBLY, Rear, 18 x 8.50-8 (14HP Models)
8	1716000	2	WHEEL & TIRE ASSEMBLY, Rear, 18 x 8.50-8 (16HP Models)
9	1715988	2	WHEEL & TIRE ASSEMBLY, Front, 13 x 5.00-6
10	1713574	2	WASHER, Cupped
11	912808	2	FITTING, Lube
12	1716022	2	FRONT WHEEL ASSEMBLY (Includes Ref. No. 11)
13	1960114	2	WASHER
14	1611710	2	RING, Klip, .750
15	1715988	2	TIRE, Front Rib Tread, 13 x 5.00-6
16	1713167	4	BUSHING, Wheel
17	1664090	2	TUBE, Tire (Optional on Front - Not Shown)
18	164247	2	TUBE, Tire (Optional on Rear - Not Shown)

### Footnotes:

---

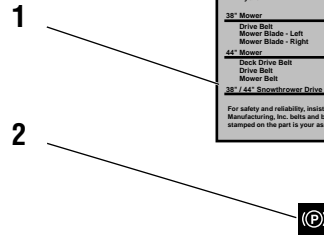
#### The above parts group applies to the following Mfg. Nos.:

1692905	14HP, ZT Rider	1692910	14HP, ZT Rider	1693286	14HP, ZT Rider	1693296	14HP, ZT Rider
1692906	16HP, ZT Rider	1692911	16HP, ZT Rider	1693288	16HP, ZT Rider	1693298	16HP, ZT Rider
1692907	14HP, ZT Rider	1693140	14HP, ZT Rider (Export)	1693290	14HP, ZT Rider (Export)	1693300	14HP, ZT Rider
1692908	16HP, ZT Rider	1693143	16HP, ZT Rider (Export)	1693292	16HP, ZT Rider (Export)	1693302	16HP, ZT Rider



LAWN TRACTORS DRIVE BELTS & MOWER BLADES	
Transmission Belt	
Gear	1697047
Hydro	1672135
38" Mower	
Drive Belt	1716854
Mower Blade - Left	1704855
Mower Blade - Right	1704101
44" Mower	
Deck Drive Belt	1697091
Drive Belt	1691672
Mower Belt	1704106
38" / 44" Snowthrower Drive Belt	
	1678241

For safety and reliability, insist on genuine Simplicity Manufacturing, Inc. belts and blades...our name stamped on the part is your assurance of quality.



**⚠ DANGER**

ROTATING BLADES CUT OFF ARMS AND LEGS

- STOP MOWER WHEN CHILDREN ARE NEAR. WE WARN - THEY FALL OFF.

**⚠ DANGER**

OPERATING ON SLOPES CAN BE DANGEROUS

SEE OPERATOR'S MANUAL. IF YOU CANNOT BACK UP A HILL - DO NOT DRIVE ON IT.

**⚠ WARNING**

AVOID SERIOUS INJURY OR DEATH

• HEAD OPERATOR'S MANUALS

• KNOW LOCATION AND FUNCTION OF ALL CONTROLS

• KEEP SHIRT TIGHTLY SHIRTED, SHOULDS & SLEEVES IN PLACE AND WORKING

• REMOVE OBJECTS THAT COULD BE THROWN BY THE BLADE

• NEVER STEP WHEN CHILDREN OR OTHERS ARE AROUND

• NEVER CARRY CHILDREN

• LOOK DOWN AND BEHIND—BEFORE AND WHILE BACKING

• AVOID SLOTTED TURNS

• IF YOU CANNOT BACK UP A HILL

• DO NOT OPERATE ON IT

• HILL UP AND DOWN SLOPES, NOT AHEAD

• IF MACHINE STOPS GOING UP HILL, STOP BLADE AND BACK DOWN SLOPE

• BE SURE BLADES AND ENGINE ARE STOPPED BEFORE PLACING HANDS OR FEET IN GRASS

• WHEN LEAVING MACHINE, SHUT OFF ENGINE, REMOVE KEY AND SET PARKING BRAKE.

**DO NOT TOW UNIT!**  
Damage may result to drive mechanism.

**OPERATION**

**To Start Engine**

- Seat must be occupied.
- Clutch/Brake pedal must be depressed.
- PTO switch must be off.

**When Operator Leaves Seat**

- Engine will shut off if Parking Brake is not engaged.
- Engine will shut off if PTO switch is on.

**To Operate PTO clutch**

- The operator must be in seat.
- To engage PTO, pull switch up.
- To disengage PTO, push switch down.

**Ⓟ Parking Brake**

**To Set Parking Brake**

- Pull knob up while Clutch/Brake pedal is depressed.
- Release Clutch/Brake pedal while holding knob.

**To Release Parking Brake**

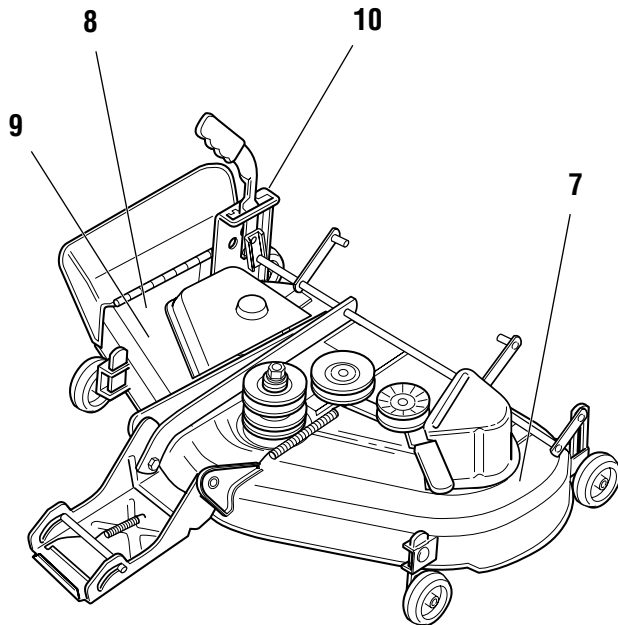
- Depress Clutch/Brake pedal.
- Push knob down while Clutch/Brake pedal is depressed.


**To Adjust Top Speed of Wheels**

CONTROL TOP SPEED OF EACH WHEEL


- Turn knob clockwise to lower top speed of a wheel.
- Turn knob counter-clockwise to raise top speed of a wheel.

Lower speed of faster wheel until vehicle travels in straight line when both levers are in the MAXIMUM forward position.






4



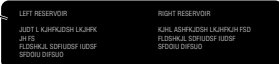
RIGHT WHEEL  
(Rear Position Shown)

5



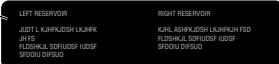
LEFT WHEEL  
(Rear Position Shown)

6




LEFT RESERVOIR

7




RIGHT RESERVOIR

8



**⚠ DANGER**

ROTATING CUTTING BLADE  
Do not operate mower without deflector or entire grass catcher in place.



**⚠ DANGER**

ROTATING CUTTING BLADE  
Do not put hands or feet under mower deck while blade is rotating.

The above parts group applies to the following Mfg. Nos.:

1692905	14HP, ZT Rider	1692911	16HP, ZT Rider	1693290	14HP, ZT Rider (Export)	1693302	16HP, ZT Rider
1692906	16HP, ZT Rider	1693140	14HP, ZT Rider (Export)	1693292	16HP, ZT Rider (Export)	1692912	38" Mower Deck
1692907	14HP, ZT Rider	1693143	16HP, ZT Rider (Export)	1693296	14HP, ZT Rider	1692913	38" Mower Deck
1692908	16HP, ZT Rider	1693286	14HP, ZT Rider	1693298	16HP, ZT Rider	1692914	44" Mower Deck
1692910	14HP, ZT Rider	1693288	16HP, ZT Rider	1693300	14HP, ZT Rider	1692915	44" Mower Deck



## Decals - Safety & Common

REF NO.	PART NO.	QTY.	DESCRIPTION
1	1719105	1	DECAL, Belt/Blade (under Seat Deck)
2	1717654	1	DECAL, Parking Brake
3	1715993	1	DECAL, Operating Instructions
4	1708927	1	DECAL, Logo, USA
5	1715996	1	DECAL, Transmission Release
6	1716098	1	DECAL, Oil Reservoir
7	1704276	1	DECAL, Danger, Rotating Cutting Blade
8	1704277	1	DECAL, Danger, Chute in Place
9	1704477	1	DECAL, Cutting Width, 38"
9	1704478	1	DECAL, Cutting Width, 44"
10	1717736	1	DECAL, Height of Cut
11	*	1	DECAL, OPEI (Not Serviced)
12	*	1	PLATE, Manufacturing No/Serial No (Not Serviced)
13	*	1	DECAL, Decibel (Export Only)
14	*	1	DECAL, CE (Export Only)
15	1717161	1	DECAL, Engine (14 HP Models - Not Shown)
16	1717162	1	DECAL, Engine (16 HP Models - Not Shown)

### Footnotes:

\* Not a Servicable Part.

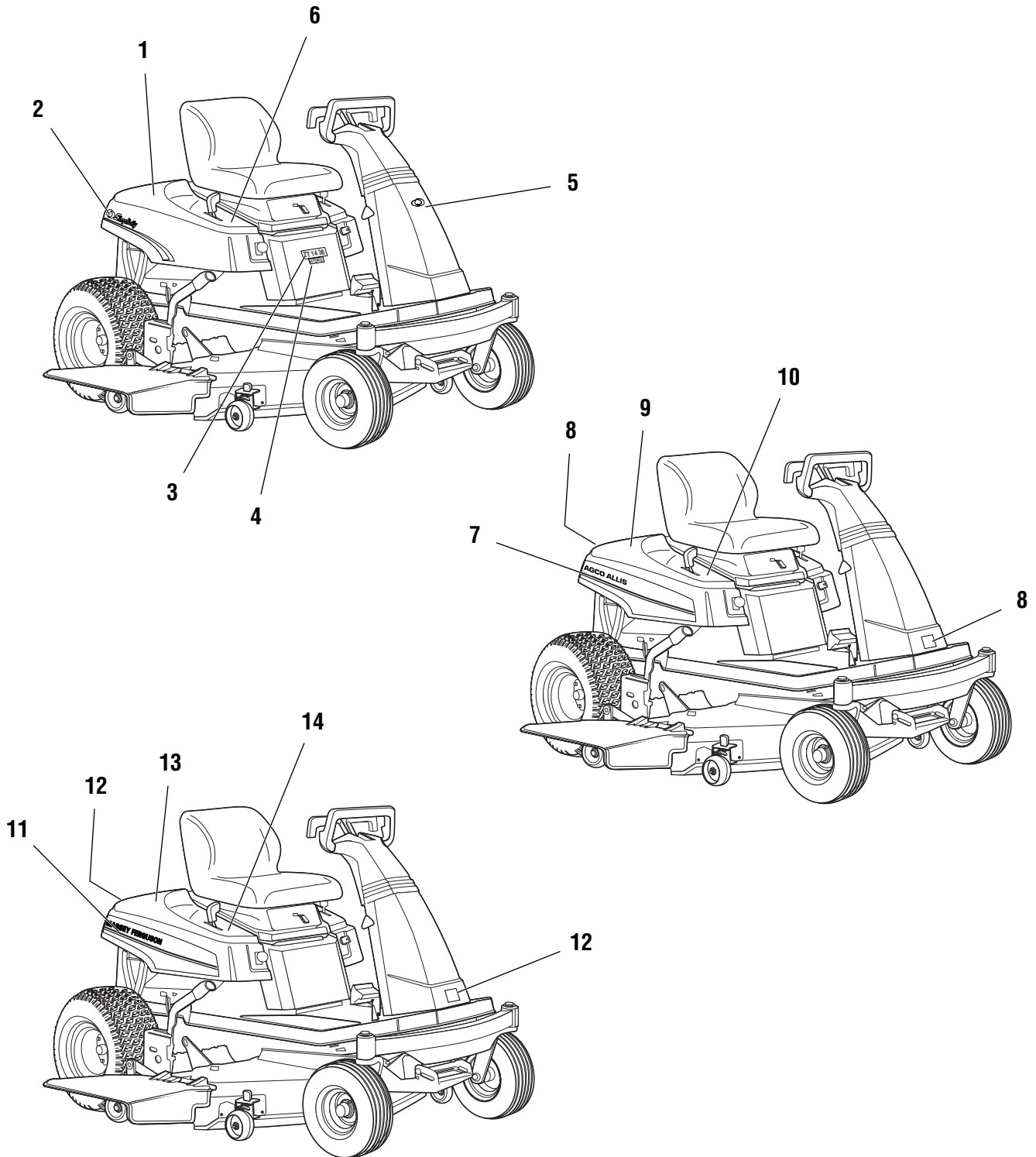
### The above parts group applies to the following Mfg. Nos.:

1692905	14HP, ZT Rider	1692911	16HP, ZT Rider	1693290	14HP, ZT Rider (Export)	1693302	16HP, ZT Rider
1692906	16HP, ZT Rider	1693140	14HP, ZT Rider (Export)	1693292	16HP, ZT Rider (Export)	1692912	38" Mower Deck
1692907	14HP, ZT Rider	1693143	16HP, ZT Rider (Export)	1693296	14HP, ZT Rider	1692913	38" Mower Deck
1692908	16HP, ZT Rider	1693286	14HP, ZT Rider	1693298	16HP, ZT Rider	1692914	44" Mower Deck
1692910	14HP, ZT Rider	1693288	16HP, ZT Rider	1693300	14HP, ZT Rider	1692915	44" Mower Deck

## Decals - Brand & Model

A-42511A

NOTE: Unless noted otherwise, use the standard hardware torque specification chart.



**The above parts group applies to the following Mfg. Nos.:**

1692905	14HP, ZT Rider	1692911	16HP, ZT Rider	1693290	14HP, ZT Rider (Export)	1693302	16HP, ZT Rider
1692906	16HP, ZT Rider	1693140	14HP, ZT Rider (Export)	1693292	16HP, ZT Rider (Export)	1692912	38" Mower Deck
1692907	14HP, ZT Rider	1693143	16HP, ZT Rider (Export)	1693296	14HP, ZT Rider	1692913	38" Mower Deck
1692908	16HP, ZT Rider	1693286	14HP, ZT Rider	1693298	16HP, ZT Rider	1692914	44" Mower Deck
1692910	14HP, ZT Rider	1693288	16HP, ZT Rider	1693300	14HP, ZT Rider	1692915	44" Mower Deck

**Decals - Brand & Model**

REF NO.	PART NO.	QTY.	DESCRIPTION
1	1717431	1	DECAL, Touch-Up Paint, Simplicity (Under Seat Deck)
2	1715991	1	DECAL, Seat Deck, RH
2	1715992	1	DECAL, Seat Deck, LH
3	1715985	1	DECAL, "ZT 14 38" (14HP Simplicity Models Only)
3	1715986	1	DECAL, "ZT 16 44" (16HP Simplicity Models Only)
4	1717688	1	DECAL, "Hydro" (Simplicity Models Only)
5	1717692	1	ICON, Simplicity
6	1708880	1	DECAL, Throttle & Choke (Simplicity Models)
7	1717175	1	DECAL, Seat Deck LH, (14HP AGCO Allis Models)
7	1717176	1	DECAL, Seat Deck RH, (14HP AGCO Allis Models)
7	1717177	1	DECAL, Seat Deck LH, (16HP AGCO Allis Models)
7	1717178	1	DECAL, Seat Deck RH, (16HP AGCO Allis Models)
8	1708926	2	DECAL, Logo, AGCO Allis
9	1717431	1	DECAL, Touch-Up Paint, AGCO Allis (Under Seat Deck)
10	1708880	1	DECAL, Throttle & Choke (AGCO Allis Models)
11	1717171	1	DECAL, Seat Deck LH, (14HP Massey Ferguson Models)
11	1717172	1	DECAL, Seat Deck RH, (14HP Massey Ferguson Models)
11	1717173	1	DECAL, Seat Deck LH, (16HP Massey Ferguson Models)
11	1717174	1	DECAL, Seat Deck RH, (16HP Massey Ferguson Models)
12	1714363	2	DECAL, Logo, Massey Ferguson
13	1717449	1	DECAL, Touch-Up Paint, Massey Ferguson, (Under Seat Deck)
14	1714435	1	DECAL, Throttle & Choke (Massey Ferguson Models)

**Footnotes:**

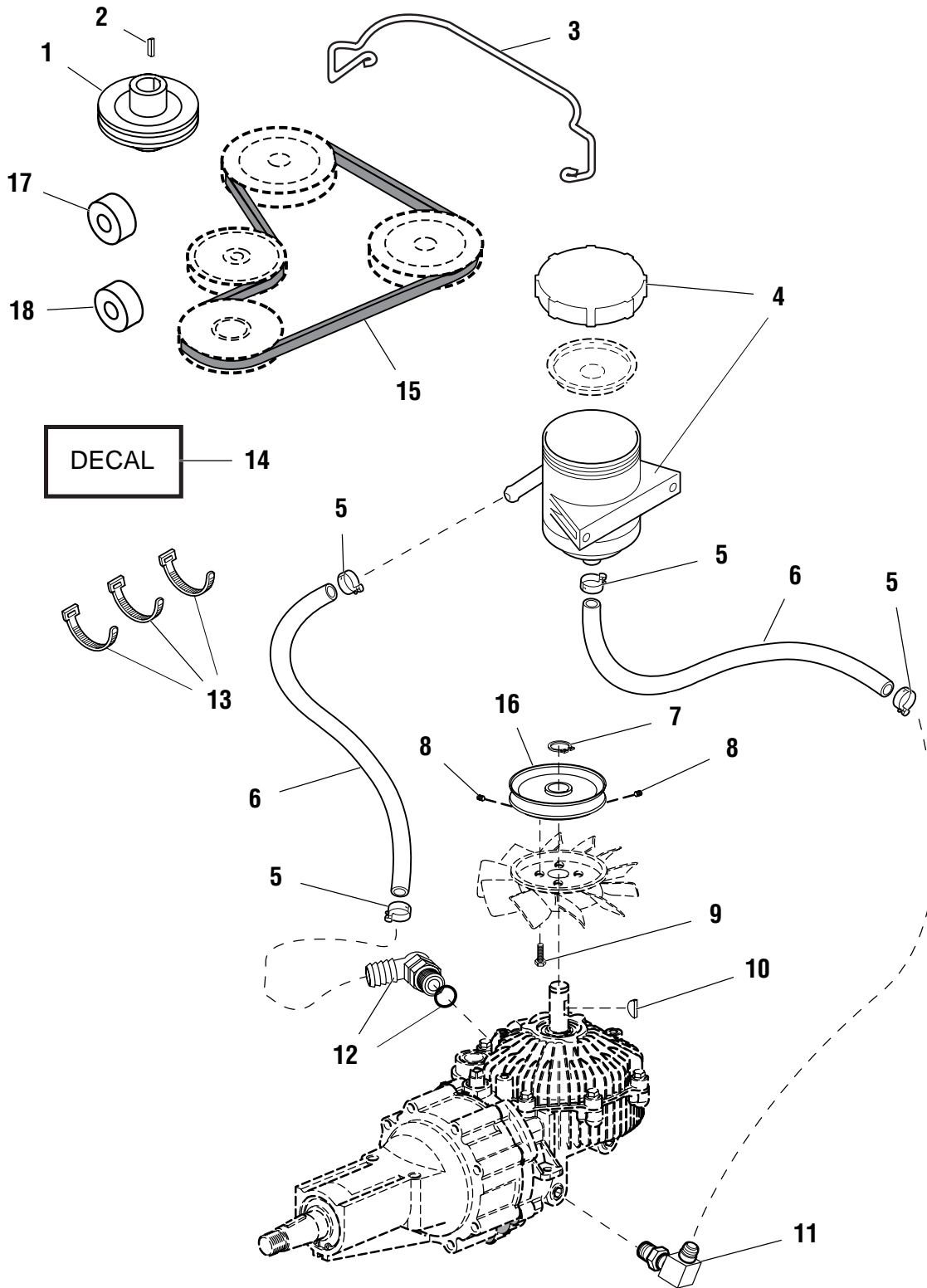
**The above parts group applies to the following Mfg. Nos.:**

1692905	14HP, ZT Rider	1692911	16HP, ZT Rider	1693290	14HP, ZT Rider (Export)	1693302	16HP, ZT Rider
1692906	16HP, ZT Rider	1693140	14HP, ZT Rider (Export)	1693292	16HP, ZT Rider (Export)	1692912	38" Mower Deck
1692907	14HP, ZT Rider	1693143	16HP, ZT Rider (Export)	1693296	14HP, ZT Rider	1692913	38" Mower Deck
1692908	16HP, ZT Rider	1693286	14HP, ZT Rider	1693298	16HP, ZT Rider	1692914	44" Mower Deck
1692910	14HP, ZT Rider	1693288	16HP, ZT Rider	1693300	14HP, ZT Rider	1692915	44" Mower Deck

# Drive System Update Kit - 1686752

A-ZT46752A

NOTE: Unless noted otherwise, use the standard hardware torque specification chart.



**The above parts group applies to the following Mfg. Nos.:**

1692905	14HP, ZT Rider	1692910	14HP, ZT Rider	1693286	14HP, ZT Rider	1693296	14HP, ZT Rider
1692906	16HP, ZT Rider	1692911	16HP, ZT Rider	1693288	16HP, ZT Rider	1693298	16HP, ZT Rider
1692907	14HP, ZT Rider	1693140	14HP, ZT Rider (Export)	1693290	14HP, ZT Rider (Export)	1693300	14HP, ZT Rider
1692908	16HP, ZT Rider	1693143	16HP, ZT Rider (Export)	1693292	16HP, ZT Rider (Export)	1693302	16HP, ZT Rider

**Drive System Update Kit - 1686752**

REF NO.	PART NO.	QTY.	DESCRIPTION
1	1719385	1	PULLEY ASSY, PTO
2	171241	1	KEY, PTO Pulley
3	1719337	1	BELT GUIDE
4	1702488	2	RESERVOIR
5	933098	8	CLAMP, Spring
6	1719556	2	HOSE, RH, 21"
6	1719557	2	HOSE, LH, 26"
7	927731	2	RETAINING RING, 1/4-28 x 1/4
8	1928692	4	SET SCREW, Hex, 1/4-20 x 5/8
9	1925003	8	SCREW, Taptite,
10	930672	2	KEY, Drive Pulley
11	1719560	2	FITTING, 90°, Steel
12	1718875	2	FITTING, 90°, Plastic
13	1701011	3	TIE, 15"
14	1716098	1	DECAL, Oil Res.
15	1719381	1	V-BELT,
16	1719382	2	PULLEY ASSY, Trans.
17	1707433	1	SPACER, Carrier, Rear, 1 x 1/2 x 11/32
18	1709089	1	SPACER, Carrier, Front, 1 x 1/2 x 17/64

**Footnotes:**

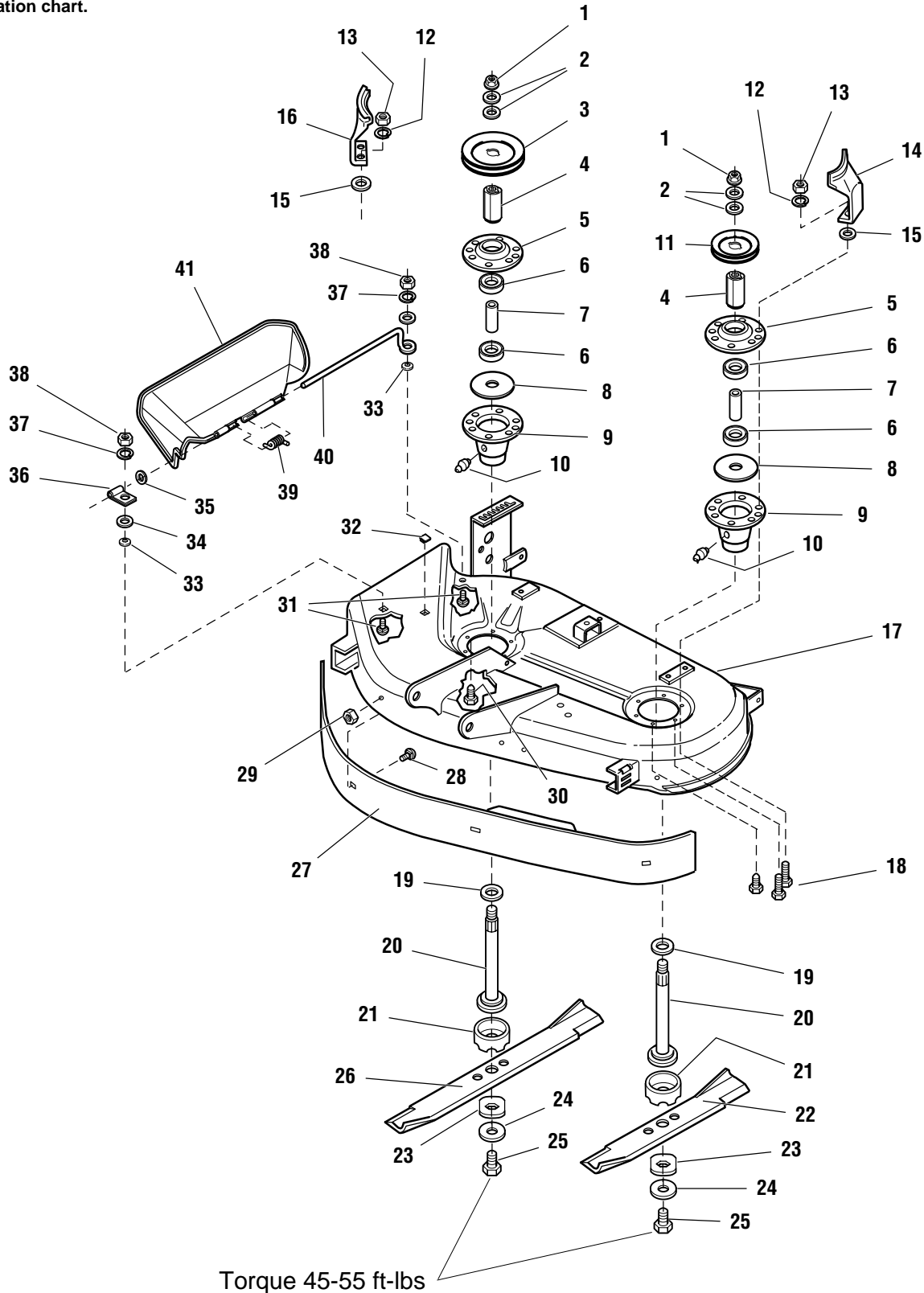
**The above parts group applies to the following Mfg. Nos.:**

1692905	14HP, ZT Rider	1692910	14HP, ZT Rider	1693286	14HP, ZT Rider	1693296	14HP, ZT Rider
1692906	16HP, ZT Rider	1692911	16HP, ZT Rider	1693288	16HP, ZT Rider	1693298	16HP, ZT Rider
1692907	14HP, ZT Rider	1693140	14HP, ZT Rider (Export)	1693290	14HP, ZT Rider (Export)	1693300	14HP, ZT Rider
1692908	16HP, ZT Rider	1693143	16HP, ZT Rider (Export)	1693292	16HP, ZT Rider (Export)	1693302	16HP, ZT Rider

# 38" Mower Deck - Housing, Arbors & Blades

A-42512A

NOTE: Unless noted otherwise, use the standard hardware torque specification chart.



The above parts group applies to the following Mfg. Nos.:

- 1692912 38" Mower Deck
- 1692913 38" Mower Deck

### **38" Mower Deck - Housing, Arbors & Blades**

<b>REF NO.</b>	<b>PART NO.</b>	<b>QTY.</b>	<b>DESCRIPTION</b>
1	1714419	2	NUT, Hex, Flange, 9/16-8
2	1713675	4	WASHER, Belleville
3	1714346	1	PULLEY, RH
4	1713616	2	HUB
5	1713199	2	COVER, Arbor Housing
6	1705897	4	BEARING
7	1713204	2	SPACER
8	1707335	2	GASKET, Foam
9	1713338	2	ARBOR HOUSING ASSEMBLY (Incl. Fitting Ref. 10)
10	1704314	2	FITTING, Grease
11	1713160	1	PULLEY, LH
12	1917356	1	LOCKWASHER, 5/16
13	1917372	5	NUT, Hex, 5/16-18
14	1714321	1	BELT STOP, LH
15	1924940	4	WASHER, Flat, 3/8
16	1714322	1	BELT STOP, RH
17	1686708	1	MOWER DECK HOUSING, 38" Orange
17	61686708	1	MOWER DECK HOUSING, 38" Charcoal Grey
18	1960373	8	SCREW, Taptite, 5/16-18 x 1
19	1713619	2	WASHER
20	1713612	2	SHAFT, Arbor
21	1713196	2	SHIELD, Grass, Lower
22	1704856	1	BLADE, Mower, 16-1/8"
23	1713089	2	WASHER, Hex
24	1656916	2	WASHER, Spring
25	923471	2	CAPSCREW, Hex, Hd., 7/16-14 x 1-1/4
26	1704101	1	BLADE, Mower, 22-1/4"
27	1686689	1	BAFFLE, Blowout, 38" (Includes 28 & 29)
28	1931332	4	CARRIAGE BOLT, 5/16-18 x 5/8
29	1935048	4	NUT, Flange Lock, 5/16-18
30	1664847	8	SCREW, Taptite, 5/16-18 x 3/4
31	1931318	2	CARRIAGE BOLT, 1/4-20 x 7/8
32	1705115	2	PLUG, Plastic
33	1960518	2	NUT, Push
34	1960353	2	WASHER, Plain
35	1919326	1	WASHER, Plain, 5/16
36	1704873	1	CLAMP
37	1916964	2	LOCKWASHER, 1/4
38	1916622	2	NUT, Hex, 1/4-20, Unc
39	1705080	1	SPRING
40	1706709	1	ROD, Deflector, Front
41	1705449	1	DEFLECTOR, Plastic

#### **Footnotes:**

---

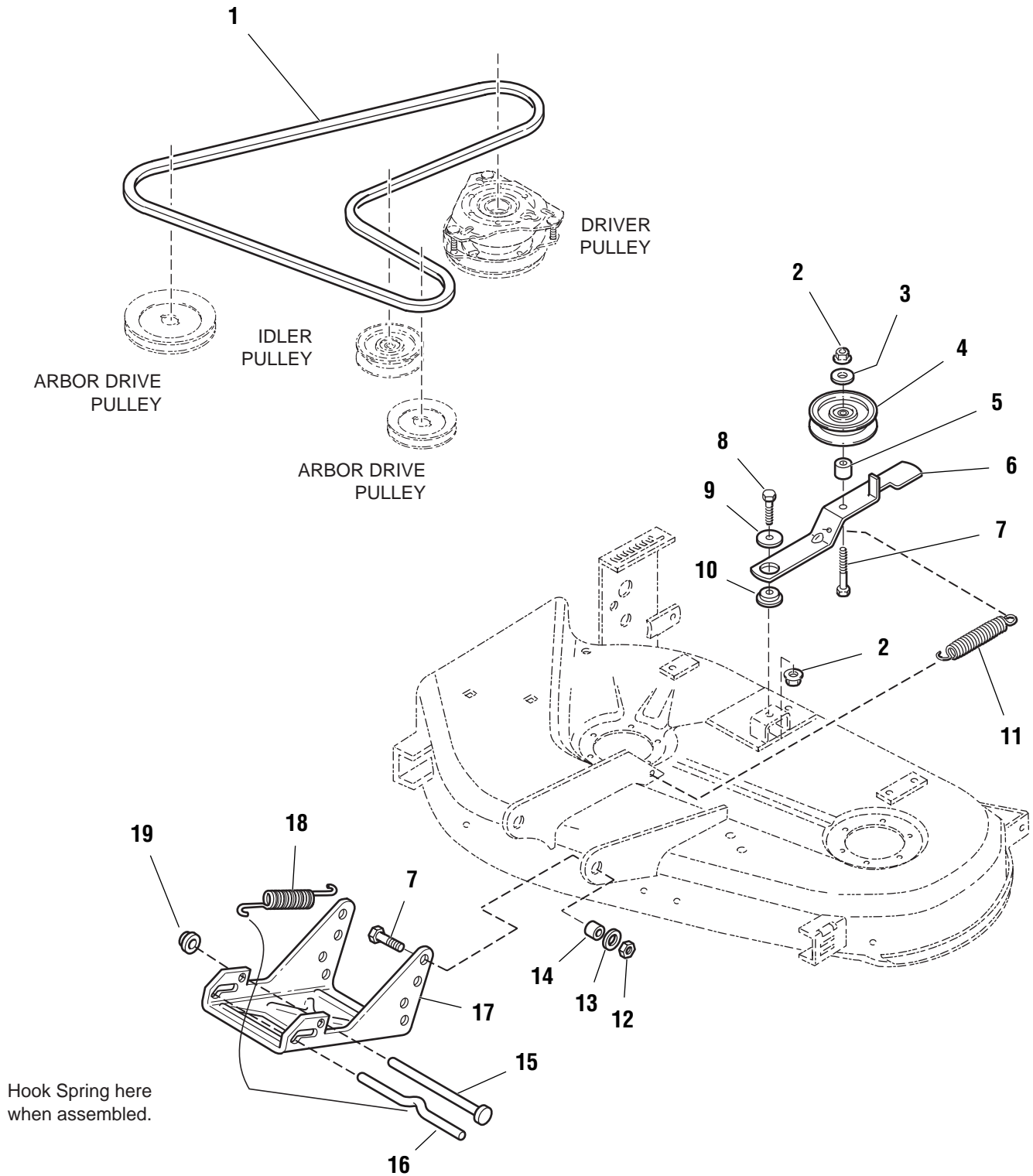
**The above parts group applies to the following Mfg. Nos.:**

1692912 38" Mower Deck  
1692913 38" Mower Deck

# 38" Mower Deck - Belt, Clutch & Support

A-42513B

NOTE: Unless noted otherwise, use the standard hardware torque specification chart.



The above parts group applies to the following Mfg. Nos.:

- 1692912 38" Mower Deck
- 1692913 38" Mower Deck



### **38" Mower Deck - Belt, Clutch & Support**

<b>REF NO.</b>	<b>PART NO.</b>	<b>QTY.</b>	<b>DESCRIPTION</b>
1	1719819	1	V-BELT
2	1960339	2	NUT, Hex Center Lock, 3/8-16
3	1666294	1	SPACER
4	1685150	1	PULLEY ASSEMBLY
5	1667812	1	SPACER
6	1714790	1	ARM, Clutch
7	1923701	1	CAPSCREW, Hex Hd, 3/8-16 x 2
8	1920415	3	CAPSCREW, Hex, 3/8-16 x 1-1/2
9	1924356	1	WASHER, 3/8
10	1714255	1	SPACER, Idler Arm
11	1715435	1	SPRING
12	1919439	2	NUT, Hex Lock ESNA, 3/8-16
13	1924940	2	WASHER, 3/8
14	174870	2	SPACER
15	1713578	1	ROD, Mower & Hitch
16	1715759	1	ROD, Latch
17	1713561	1	HITCH
18	156302	1	SPRING
19	1960519	1	NUT, Push, 1/2

#### **Footnotes:**

---

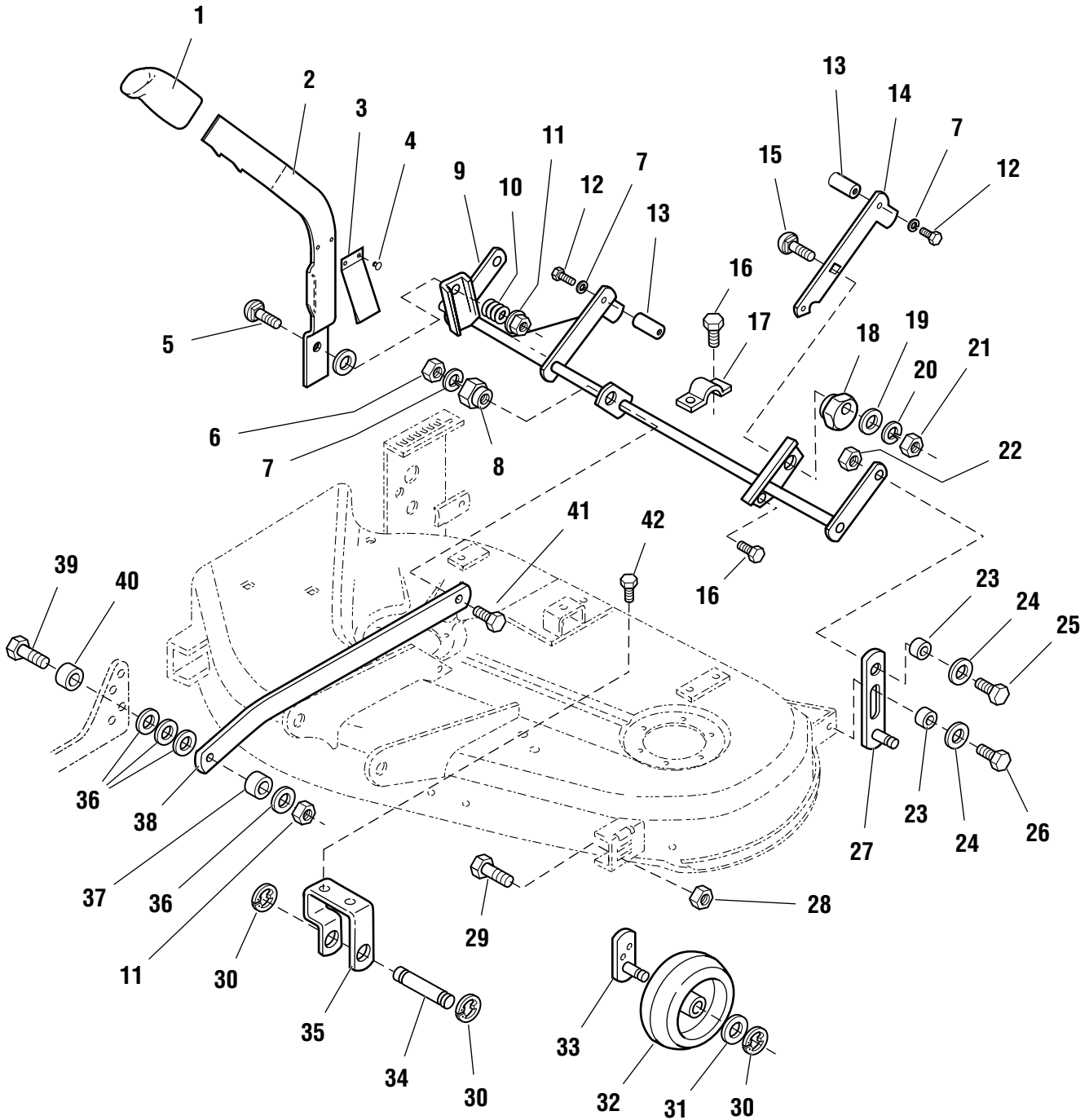
**The above parts group applies to the following Mfg. Nos.:**

- 1692912 38" Mower Deck
- 1692913 38" Mower Deck

# 38" Mower Deck - Height Adjustment & Rollers

A-42514A

NOTE: Unless noted otherwise,  
use the standard hardware torque  
specification chart.



The above parts group applies to the following Mfg. Nos.:

- 1692912 38" Mower Deck
- 1692913 38" Mower Deck

### 38" Height Adjustment & Rollers

REF NO.	PART NO.	QTY.	DESCRIPTION
1	1714876	1	GRIP
2	1717658	1	ARM, Height Adjust (Includes Spring & Rivets)
3	1716028	1	SPRING
4	910542	2	RIVET
5	1931353	1	CARRIAGE BOLT, 3/8-16 x 1-3/4
6	1916950	1	NUT, Hex, 3/8
7	1916965	3	WASHER, Lock, 3/8
8	1704082	1	NUT, Adjuster
9	1716030	1	ROCKER ARM ASSEMBLY
10	1714263	1	SPRING
11	1930645	2	NUT, Flange Lock, 3/8
12	1921210	2	CAPSCREW, Hex Hd, 3/8-16 x 1
13	1716010	2	SUPPORT, Mower
14	1717670	1	ARM ASSEMBLY, Rear Adjusting
15	1960223	1	CARRIAGE BOLT, 5/16-18 x 1-1/4
16	1960594	2	CAPSCREW, Hex Hd, Taptite, 5/16-18 x 7/8
17	1665374	1	STRAP
18	1714879	1	ECCENTRIC
19	1924874	1	WASHER
20	1917356	1	WASHER, Lock, 5/16
21	1917372	1	NUT, 5/16-18
22	1923362	2	NUT, Lock, 5/16-18
23	1960236	4	SPACER
24	1960044	4	WASHER
25	1921333	2	CAPSCREW, 5/16-18 x 1
26	1960373	2	CAPSCREW, Hex Hd, Taptite, 5/16-18 x 1
27	1714877	2	ARM ASSEMBLY
28	1930642	2	NUT, Flanged 2-Way Lock, 1/4-20
29	1923341	2	CAPSCREW, Hex Hd., 1/4-20 x 3/4
30	158399	4	E-RING, 1/2
31	1960027	4	WASHER, 1/2
32	1714760	5	WHEEL, Gauge
33	1716020	2	ARM ASSEMBLY, Fixed
34	1714882	1	SHAFT, Gauge Wheel
35	1714881	1	BRACKET, Gauge Wheel
36	1924940	4	WASHER, Flat, 3/8
37	1611705	1	SPACER
38	1716023	1	ARM, Pitch
39	1923701	1	CAPSCREW, 3/8-16 x 1-1/4
40	1715024	1	SPACER
41	1931352	1	CARRIAGE BOLT, 3/8-16 x 1-1/2
42	1664847	4	CAPSCREW, Hex Hd, Taptite, 5/16-18 x 3/4

#### Footnotes:

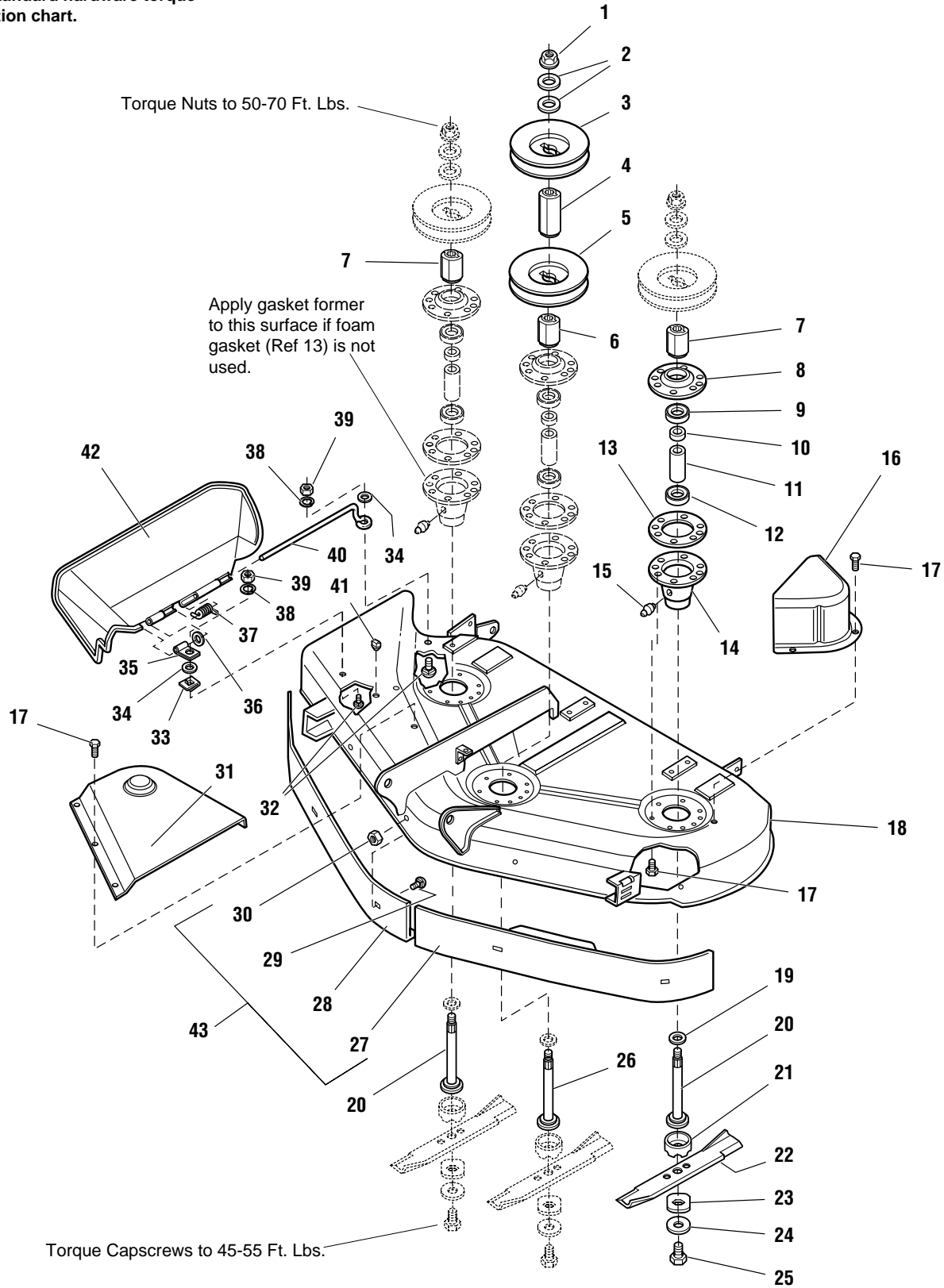
The above parts group applies to the following Mfg. Nos.:

1692912 38" Mower Deck  
1692913 38" Mower Deck

# 44" Mower Deck - Housing, Arbors & Blades

A-42515A

**NOTE:** Unless noted otherwise, use the standard hardware torque specification chart.



**The above parts group applies to the following Mfg. Nos.:**

- 1692914 44" Mower Deck
- 1692915 44" Mower Deck

## 44" Mower Deck - Housing, Arbors & Blades

REF NO.	PART NO.	QTY.	DESCRIPTION
1	1714419	3	NUT, Hex Flange, 9/16-18
2	1713675	6	WASHER, Belleville
3	1713161	1	PULLEY
4	1713158	1	HUB, Pulley, Double
5	1713098	3	PULLEY
6	1713533	1	HUB, Pulley, Double
7	1713197	2	HUB, Pulley
8	1655729	3	HOUSING, Arbor, Top
9	108202	3	BEARING
10	1715724	3	SPACER, Bearing Sleeve
11	1715723	3	SPACER
12	1705897	3	BEARING
13	1707335	3	GASKET, Foam
14	1713338	3	HOUSING, Arbor, Bottom
15	1704314	3	FITTING, Lube
16	1718374	1	COVER, Arbor, Plastic
17	1664847	27	CAPSCREW, Hex Washer Head, Taptite, 5/16-18 x 3/4
18	1686709	1	HOUSING ASSEMBLY, 44" Orange
18	61686709	1	HOUSING ASSEMBLY, 44" Charcoal Grey
19	1713619	3	WASHER
20	1713195	2	SHAFT, Arbor
21	1713196	3	SHIELD, Grass, Lower
22	1704100	3	BLADE, Mower
23	1713089	3	WASHER, Hex
24	1656916	3	WASHER, Spring
25	923471	3	CAPSCREW, Hex Head, 7/16-14 x 1-1/4
26	1713612	1	SHAFT, Arbor, Center
27	1716879	1	BAFFLE, Anti-Blowout, LH
28	1716878	1	BAFFLE, Anti-Blowout, RH
29	1931332	8	CARRIAGE BOLT, 5/16-18 x 5/8
30	1935048	8	NUT, Hex Flange, 2-Way Lock, 5/16-18
31	1703601	1	COVER, Arbor
32	1931318	2	CARRIAGE BOLT, 1/4-20 x 7/8
33	1960518	2	NUT, Push On
34	1960353	2	WASHER
35	1704873	1	CLAMP
36	1919326	1	WASHER, 5/16
37	1705080	1	SPRING
38	1916964	2	WASHER, Lock, 1/4
39	1916622	2	NUT, Hex, 1/4-20
40	1706709	1	ROD, Deflector, Front
41	1705115	1	PLUG, Hole
42	1705449	1	DEFLECTOR, Plastic
43	1686690	1	ANTI-BLOWOUT KIT, 44"

### Footnotes:

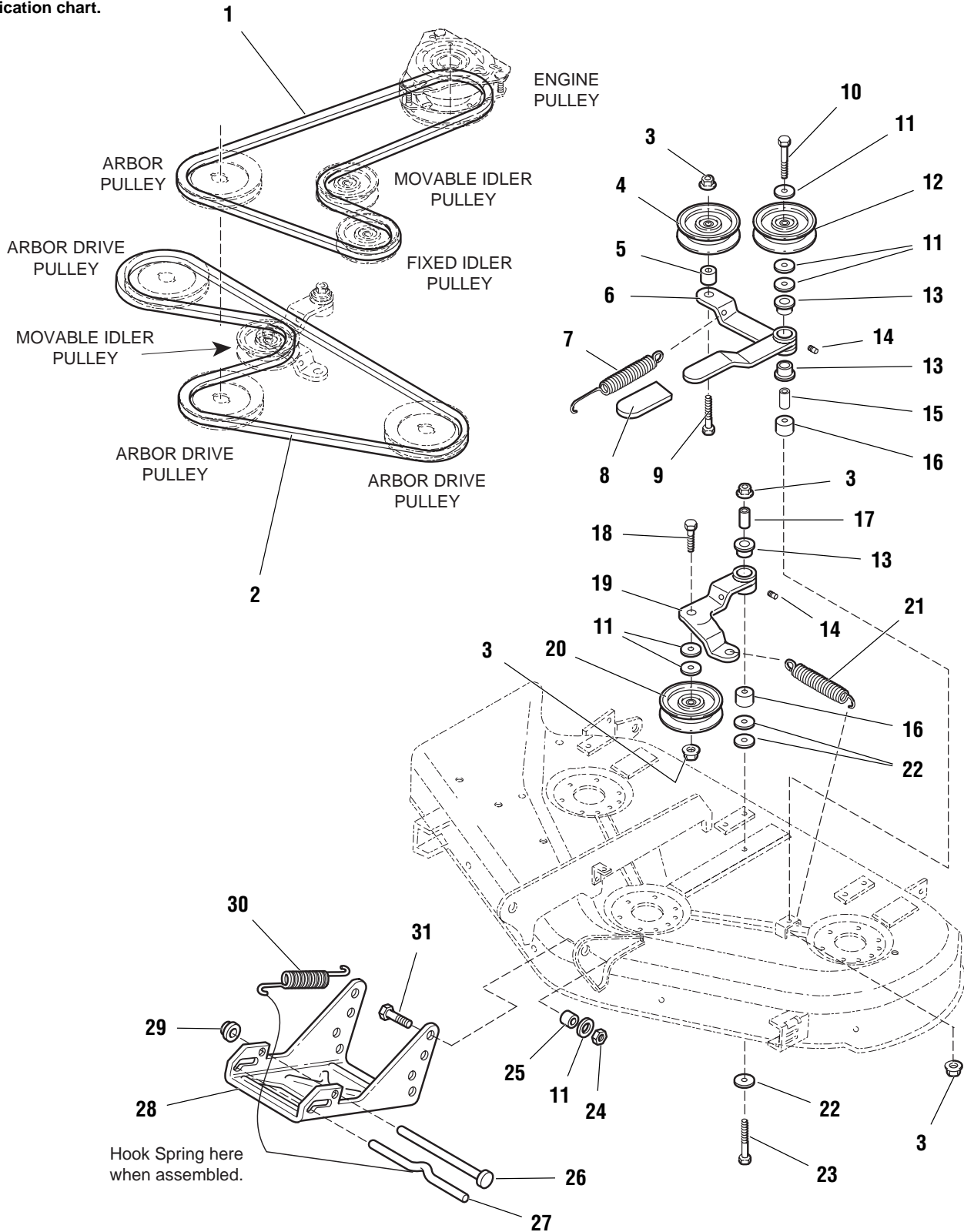
The above parts group applies to the following Mfg. Nos.:

1692914 44" Mower Deck  
1692915 44" Mower Deck

# 44" Mower Deck - Belt, Clutch & Support

A-42516B

NOTE: Unless noted otherwise, use the standard hardware torque specification chart.



The above parts group applies to the following Mfg. Nos.:

- 1692914 44" Mower Deck
- 1692915 44" Mower Deck

## 44" Mower Deck - Belt, Clutch & Support

REF NO.	PART NO.	QTY.	DESCRIPTION
1	1713549	1	V-BELT, Mower Drive
2	167031	1	V-BELT, Deck Drive
3	1960339	4	NUT, Hex Flange Lock, 3/8-16
4	171247	1	PULLEY ASSEMBLY
5	1667812	1	SPACER
6	1716087	1	LEVER ASSEMBLY (with Bushings)
7	1714062	1	SPRING
8	1665835	1	GRIP, Lever
9	1923701	1	CAPSCREW, 3/8-16 x 2
10	1923938	1	CAPSCREW, 3/8-16 x 3-1/2
11	1924940	7	WASHER, 3/8
12	1706510	1	PULLEY, Idler
13	1676148	4	BUSHING
14	912808	2	FITTING, Lube
15	1657242	1	SPACER
16	1667811	2	SPACER
17	1674669	1	SPACER
18	1960268	1	CARRIAGE BOLT, 3/8-16 x 1-1/4
19	1718561	1	LEVER ASSEMBLY, Idler with Fitting
20	1685150	1	PULLEY ASSEMBLY
21	1703801	1	SPRING
22	1924356	3	WASHER
23	1921972	1	CAPSCREW, Hex Hd., 3/8-16 x 2-1/2
24	1919439	2	NUT, Hex Lock, 3/8-16
25	157081	2	SPACER
26	1713578	1	ROD, Mower Hitch
27	1715759	1	ROD, Latch
28	1713561	1	HITCH
29	1960519	1	NUT, Push, 1/2
30	156302	1	SPRING
31	1921969	2	CAPSCREW, Hex Hd, 3/8-16 x 1-1/2

### Footnotes:

---

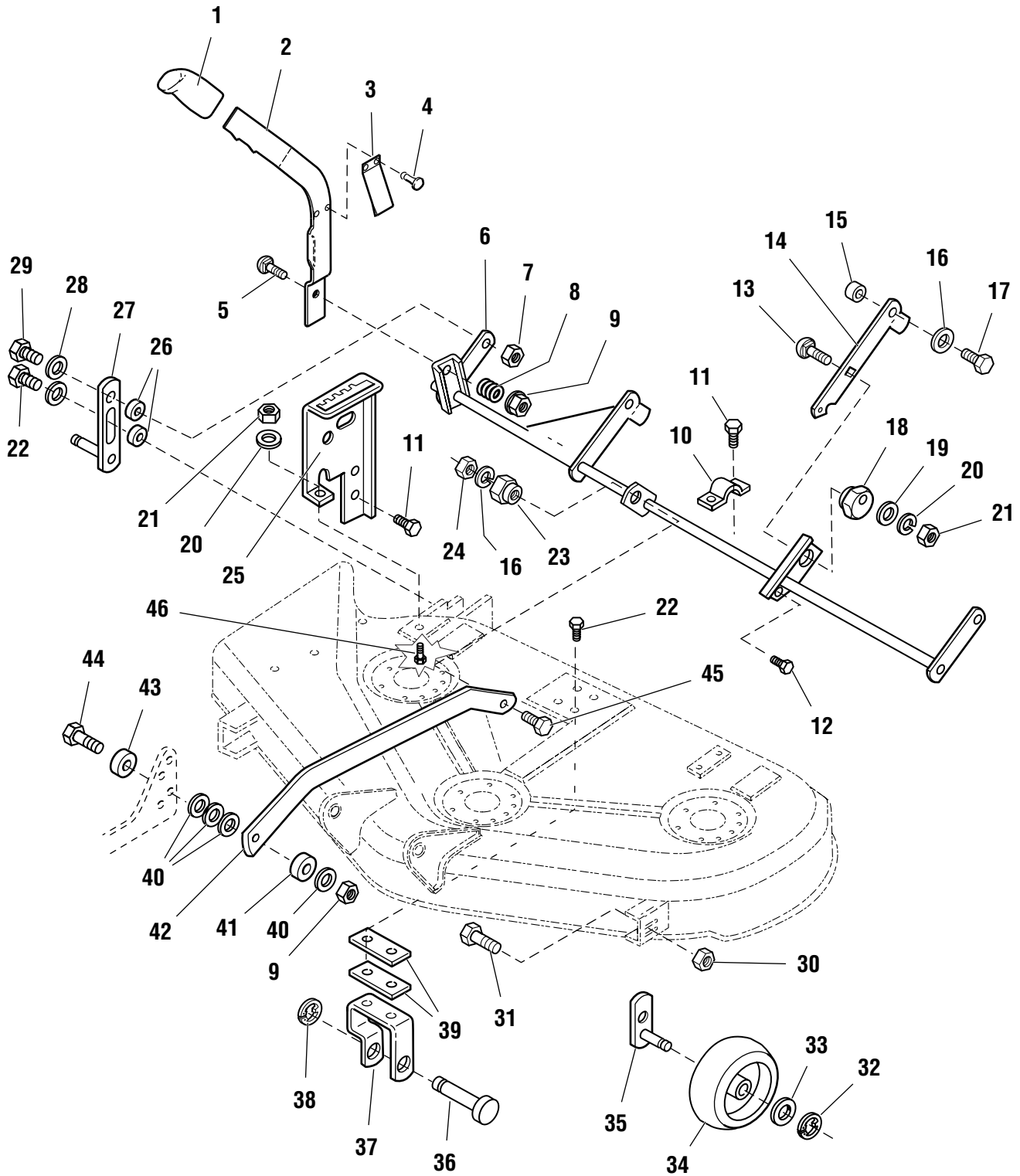
The above parts group applies to the following Mfg. Nos.:

1692914 44" Mower Deck  
1692915 44" Mower Deck

# 44" Mower Deck - Height Adjustment & Rollers

A-42517A

NOTE: Unless noted otherwise,  
use the standard hardware torque  
specification chart.



The above parts group applies to the following Mfg. Nos.:

- 1692914 44" Mower Deck
- 1692915 44" Mower Deck



## 44" Mower Deck - Height Adjustment & Rollers

REF NO.	PART NO.	QTY.	DESCRIPTION
1	1714876	1	GRIP
2	1717658	1	ARM, Height Adjust (Includes Spring & Rivets)
3	1716028	1	SPRING
4	910542	2	RIVET
5	1931353	1	CARRIAGE BOLT, 3/8-16 x 1-3/4
6	1716052	1	ROCKER ARM ASSEMBLY
7	1923362	2	NUT, Lock, 5/16-18
8	1714263	1	SPRING
9	1930645	2	NUT, Flange Lock, 3/8
10	1665374	2	STRAP
11	1664847	6	CAPSCREW, Hex Hd, Taptite, 5/16-18 x 3/4
12	1960594	1	CAPSCREW, Hex Hd, Taptite, 5/16-18 x 7/8
13	1960223	1	CARRIAGE BOLT, 5/16-18 x 1-1/4
14	1717670	1	ARM ASSEMBLY, Rear Adjusting
15	1716010	2	SUPPORT, Mower
16	1916965	3	WASHER, Lock, 3/8
17	1921210	2	CAPSCREW, Hex Hd, 3/8-16 x 1
18	1714879	1	ECCENTRIC
19	1924874	1	WASHER
20	1917356	2	WASHER, Lock, 5/16
21	1917372	2	NUT, 5/16-18
22	1960373	4	CAPSCREW, Hex Hd, Taptite, 5/16-18 x 1
23	1704082	1	NUT, Adjuster
24	1916950	1	NUT, Hex, 3/8
25	1717109	1	QUADRANT
26	1960236	4	SPACER
27	1714877	2	ARM ASSEMBLY
28	1960044	4	WASHER
29	1921333	2	CAPSCREW, 5/16-18 x 1
30	1930642	2	NUT, Flanged 2-Way Lock, 1/4-20
31	1923341	2	CAPSCREW, Hex Hd., 1/4-20 x 3/4
32	158399	4	E-RING, 1/2
33	1960027	4	WASHER, 1/2
34	1714760	5	WHEEL, Gauge
35	1716020	2	ARM ASSEMBLY, Fixed
36	1715624	1	ROD, Mower Hitch
37	1714881	1	BRACKET, Gauge Wheel
38	1960519	1	NUT, Push, 1/2
39	1715608	2	STRAP
40	1924940	4	WASHER, Flat, 3/8
41	1611705	1	SPACER
42	1716011	1	ARM, Pitch
43	1715024	1	SPACER
44	1923701	1	CAPSCREW, 3/8-16 x 1-1/4
45	1931352	1	CARRIAGE BOLT, 3/8-16 x 1-1/2
46	1921332	1	CAPSCREW, Hex Hd, 5/16-18 x 3/4

### Footnotes:

The above parts group applies to the following Mfg. Nos.:

1692914 44" Mower Deck  
1692915 44" Mower Deck

## Part Number Index by Page Number

Part No.	Page No	Ref No.	Part No.	Page No	Ref No.	Part No.	Page No	Ref No.	Part No.	Page No	Ref No.	Part No.	Page No	Ref No.
*	8	2	1664090	20	17	1702268	18	9	1708139	18	22	1713588	14	28
*	8	2	1664847	28	30	1702488	26	4	1708140	18	25	1713612	28	20
*	18	38	1664847	32	42	1703601	34	31	1708142	18	26	1713612	34	26
*	22	11	1664847	34	17	1703801	36	21	1708143	18	28	1713616	28	4
*	22	12	1664847	38	11	1703805	14	20	1708144	18	27	1713619	28	19
*	22	13	1665237	10	30	1703851	10	24	1708264	8	30	1713619	34	19
*	22	14	1665237	12	30	1703851	12	24	1708352	14	38	1713642	10	27
105337	14	2**	1665238	10	28	1703900	2	2	1708362	2	34	1713675	28	2
108202	34	9	1665238	12	28	1703900	14	70	1708363	2	32	1713675	34	2
122023	10	33	1665374	32	17	1704082	32	8	1708405	8	7	1713846	8	3
122023	12	33	1665374	38	10	1704082	38	23	1708409	14	8	1713855	6	31
156302	30	18	1665819	6	30	1704100	34	22	1708416	8	22	1714020	2	35
156302	36	30	1665835	36	8	1704101	28	26	1708504	2	16	1714062	36	7
157081	36	25	1665872	10	23	1704276	22	7	1708509	2	11	1714065	8	1
158399	32	30	1665872	12	23	1704277	22	8	1708511	2	13	1714078	2	26
158399	38	32	1666294	30	3	1704314	28	10	1708524	2	55	1714255	30	10
158499	14	5	1667286	2	12	1704314	34	15	1708525	2	46	1714263	32	10
159106	14	17	1667805	10	22	1704351	2	56	1708554	14	9	1714263	38	8
164247	20	18	1667805	12	22	1704419	14	4	1708725	8	6	1714320	10	1
167031	36	2	1667811	36	16	1704477	22	9	1708880	24	6	1714321	28	14
170157	14	64	1667812	14	40	1704478	22	9	1708880	24	10	1714322	28	16
171241	26	2	1667812	30	5	1704626	2	60	1708881	2	10	1714346	28	3
171247	36	4	1667812	36	5	1704628	2	64	1708882	10	26	1714363	24	12
172353	20	5	1669954	18	16**	1704849	14	6	1708926	24	8	1714419	28	1
173206	2	27	1673320	2	15	1704856	28	22	1708927	22	4	1714419	34	1
174870	30	14	1673333	20	3	1704867	2	68	1709055	8	5	1714435	24	14
905126	18	37	1673796	2	23	1704873	28	36	1709086	10	25	1714625	2	14
910542	32	4	1674231	2	41	1704873	34	35	1709086	12	25	1714760	32	32
910542	38	4	1674669	36	17	1705080	28	39	1709088	10	32	1714760	38	34
912808	20	11	1675043	10	3	1705080	34	37	1709088	12	32	1714790	30	6
912808	36	14	1675043	12	3	1705115	28	32	1709089	26	18	1714876	32	1
920427	10	13	1676148	36	13	1705115	34	41	1709235	2	50	1714876	38	1
920427	12	13	1676183	8	17	1705142	14	1**	1710437	2	37	1714877	32	27
921133	2	69	1685150	30	4	1705248	2	62	1713089	28	23	1714877	38	27
923471	28	25	1685150	36	20	1705249	2	61	1713089	34	23	1714879	32	18
923471	34	25	1685215	10	21	1705449	28	41	1713098	34	5	1714879	38	18
927731	18	31	1685215	12	21	1705449	34	42	1713158	34	4	1714881	32	35
927731	26	7	1685290	10	31	1705590	14	65	1713160	28	11	1714881	38	37
928197	6	14	1685290	12	31	1705897	28	6	1713161	34	3	1714882	32	34
930672	18	34	1685483	2	36	1705897	34	12	1713167	20	16	1715024	32	40
930672	26	10	1686638	2	14	1706260	14	14	1713195	34	20	1715024	38	43
933098	26	5	1686689	28	27	1706264	14	7	1713196	28	21	1715031	20	6
934712	2	54	1686690	34	43	1706388	14	54	1713196	34	21	1715435	30	11
960202	20	1	1686708	28	17	1706510	36	12	1713197	34	7	1715608	38	39
960208	2	59	1686709	34	18	1706709	28	40	1713199	28	5	1715624	38	36
960266	14	76**	1686750	6	27	1706709	34	40	1713204	28	7	1715723	34	11
1611705	14	39	1686751	6	27	1707056	10	14	1713338	28	9	1715724	34	10
1611705	32	37	1700443	14	84	1707056	12	14	1713338	34	14	1715759	30	16
1611705	38	41	1701011	10	6	1707335	28	8	1713502	8	16	1715759	36	27
1611710	20	14	1701011	12	6	1707335	34	13	1713533	34	6	1715954	14	3**
1612103	10	20	1701011	14	79	1707433	26	17	1713549	36	1	1715955	10	5
1612103	12	20	1701011	26	13	1707510	14	26	1713557	8	23	1715955	12	5
1654930	2	40	1701435	14	83	1708030	14	36	1713561	30	17	1715956	10	36
1655729	34	8	1701580	10	2	1708133	18	29	1713561	36	28	1715956	12	36
1656916	28	24	1701996	14	13	1708135	18	19	1713574	20	10	1715957	14	60
1656916	34	24	1702251	18	6	1708136	18	20	1713578	30	15	1715958	14	73
1657242	36	15	1702251	18	11	1708137	18	21	1713578	36	26	1715959	14	72
1660347	2	57	1702258	18	30	1708138	18	23	1713588	6	24	1715960	14	74

## Part Number Index by Page Number

Part No.	Page No	Ref No.	Part No.	Page No	Ref No.	Part No.	Page No	Ref No.	Part No.	Page No	Ref No.	Part No.	Page No	Ref No.
1715961	2	18	1716051	18	14**	1717664	8	13	1917372	8	20	1923341	38	31
1715962	2	25	1716052	38	6	1717666	2	28	1917372	14	33	1923362	32	22
1715968	14	63	1716054	18	15	1717670	32	14	1917372	28	13	1923362	38	7
1715970	2	30	1716056	18	17	1717670	38	14	1917372	32	21	1923500	14	57
1715972	14	29	1716057	18	18	1717688	24	4	1917372	38	21	1923701	14	44
1715973	14	19	1716058	18	24	1717692	24	5	1918199	8	14	1923701	30	7
1715976	10	4	1716059	18	32**	1717736	22	10	1918447	14	16	1923701	32	39
1715977	6	33	1716060	18	36	1718272	6	25	1918451	14	68	1923701	36	9
1715981	14	82**	1716061	10	8	1718293	18	33	1919326	6	19	1923701	38	44
1715985	24	3	1716061	12	8	1718374	34	16	1919326	8	19	1923735	8	27
1715986	24	3	1716064	2	49	1718376	2	58	1919326	14	15	1923938	36	10
1715988	20	9	1716073	6	7	1718561	36	19	1919326	28	35	1924356	30	9
1715988	20	15	1716077	14	12	1718758	6	35	1919326	34	36	1924356	36	22
1715989	20	8	1716078	14	10	1718851	2	1	1919381	2	5	1924361	14	25
1715990	14	59	1716079	6	10	1718875	26	12	1919381	8	8	1924856	8	24
1715991	24	2	1716080	8	25	1718945	2	3	1919381	14	62	1924874	8	28
1715992	24	2	1716086	14	45	1718950	12	26	1919394	2	53	1924874	14	30
1715993	22	3	1716087	36	6	1718952	12	4	1919438	6	21	1924874	32	19
1715996	22	5	1716094	14	43	1718981	12	1	1919438	14	71	1924874	38	19
1715997	2	52	1716098	22	6	1719105	22	1	1919439	30	12	1924940	2	38
1715998	6	27	1716098	26	14	1719337	26	3	1919439	36	24	1924940	14	35
1715999	2	47	1716099	20	2	1719376	6	12	1920263	10	34	1924940	28	15
1716000	20	8	1716332	10	7	1719381	26	15	1920263	12	34	1924940	30	13
1716002	6	1	1716332	12	7	1719382	26	16	1920328	2	48	1924940	32	36
1716003	20	4	1716878	34	28	1719385	26	1	1920415	30	8	1924940	36	11
1716004	6	13	1716879	34	27	1719442	18	39	1920470	6	22	1924940	38	40
1716005	14	46	1717050	12	2	1719556	26	6	1921176	14	23	1925003	2	21
1716007	14	49**	1717109	38	25	1719557	26	6	1921210	32	12	1925003	6	28
1716008	14	48**	1717154	6	3	1719560	26	11	1921210	38	17	1925003	10	29
1716010	32	13	1717155	6	2	1719683	14	22	1921319	6	32	1925003	12	29
1716010	38	15	1717157	6	5	1719725	14	24	1921319	10	18	1925003	26	9
1716011	38	42	1717158	6	4	1719819	30	1	1921319	12	18	1925205	2	22
1716012	20	4	1717161	22	15	1916622	10	16	1921319	14	52	1925592	14	47
1716014	18	1	1717162	22	16	1916622	12	16	1921332	38	46	1928692	18	35
1716015	18	2	1717163	10	11	1916622	28	38	1921333	2	31	1928692	26	8
1716016	18	3	1717163	12	11	1916622	34	39	1921333	8	31	1930591	2	6
1716017	18	4	1717165	6	25	1916950	14	42	1921333	32	25	1930591	2	45
1716018	14	78**	1717167	6	6	1916950	32	6	1921333	38	29	1930591	2	66
1716019	14	77**	1717171	24	11	1916950	38	24	1921719	6	23	1930591	6	16
1716020	32	33	1717172	24	11	1916964	10	17	1921719	14	27	1930641	14	80
1716020	38	35	1717173	24	11	1916964	12	17	1921959	14	81	1930642	2	4
1716022	20	12	1717174	24	11	1916964	14	51	1921969	36	31	1930642	6	34
1716023	32	38	1717175	24	7	1916964	28	37	1921972	14	34	1930642	32	28
1716024	8	26	1717176	24	7	1916964	34	38	1921972	36	23	1930642	38	30
1716027	2	20	1717177	24	7	1916965	14	41	1921977	2	8	1930644	2	51
1716028	32	3	1717178	24	7	1916965	32	7	1921977	14	75	1930644	14	21
1716028	38	3	1717431	24	1	1916965	38	16	1922127	2	24	1930645	14	55
1716030	32	9	1717431	24	9	1917356	2	7	1922234	14	50	1930645	32	11
1716035	14	18	1717449	24	13	1917356	6	9	1922586	10	15	1930645	38	9
1716036	6	20	1717549	10	9	1917356	8	9	1922586	12	15	1931202	2	39
1716038	2	67	1717549	12	9	1917356	10	35	1922611	6	29	1931202	14	61
1716039	18	5	1717550	10	10	1917356	12	35	1922755	14	37	1931211	10	12
1716044	14	53	1717550	12	10	1917356	14	32	1922918	14	56	1931211	12	12
1716045	18	7	1717551	2	43	1917356	28	12	1923300	8	29	1931277	2	19
1716046	18	8	1717654	22	2	1917356	32	20	1923341	2	29	1931277	6	17
1716047	18	10	1717656	14	31**	1917356	38	20	1923341	10	19	1931318	28	31
1716049	18	12	1717658	32	2	1917372	2	9	1923341	12	19	1931318	34	32
1716050	18	13	1717658	38	2	1917372	6	8	1923341	32	29	1931332	28	28

## Part Number Index by Page Number

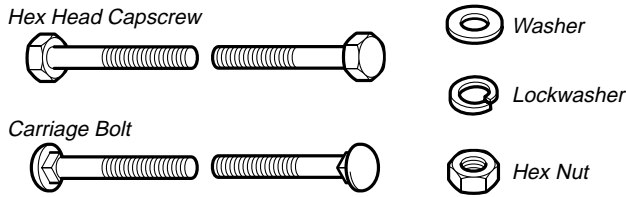
---

Part No.	Page No	Ref No.	Part No.	Page No	Ref No.	Part No.	Page No	Ref No.	Part No.	Page No	Ref No.	Part No.	Page No	Ref No.
1931332	34	29												
1931333	2	33												
1931333	6	11												
1931335	14	69												
1931352	32	41												
1931352	38	45												
1931353	32	5												
1931353	38	5												
1933263	8	11												
1933896	14	11												
1933988	2	44												
1933988	6	15												
1935048	28	29												
1935048	34	30												
1935255	2	65												
1935255	6	26												
1935255	8	21												
1950021	8	12												
1960027	14	67												
1960027	32	31												
1960027	38	33												
1960044	32	24												
1960044	38	28												
1960112	2	42												
1960114	20	13												
1960160	14	58												
1960223	32	15												
1960223	38	13												
1960236	32	23												
1960236	38	26												
1960268	36	18												
1960295	2	17												
1960339	30	2												
1960339	36	3												
1960351	8	15												
1960353	28	34												
1960353	34	34												
1960373	2	63												
1960373	28	18												
1960373	32	26												
1960373	38	22												
1960405	8	10												
1960483	8	18												
1960518	28	33												
1960518	34	33												
1960519	30	19												
1960519	36	29												
1960519	38	38												
1960536	8	4												
1960547	12	27												
1960594	14	66												
1960594	32	16												
1960594	38	12												
6155720	20	7												
8191045	6	18												
61686708	28	17												
61686709	34	18												



# Hardware Identification & Torque Specifications

## Common Hardware Types

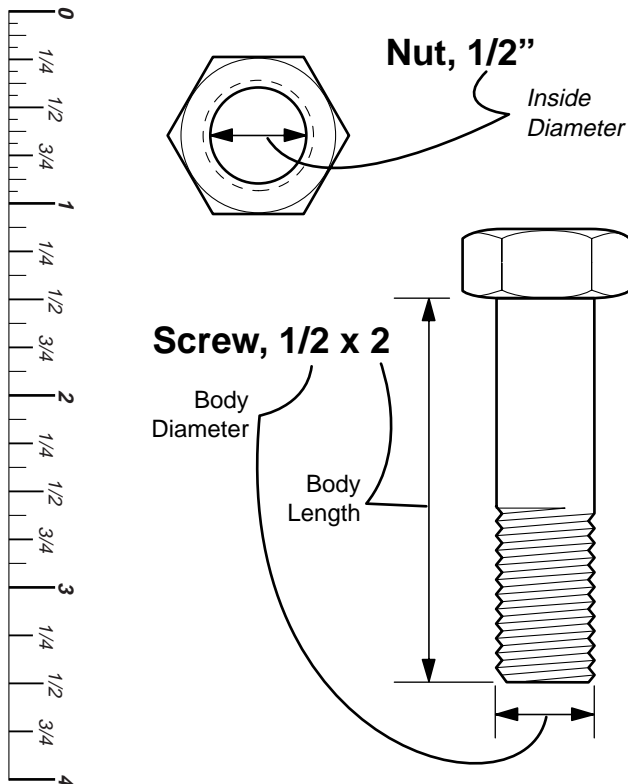


## Standard Hardware Sizing

When a washer or nut is identified as **1/2"**, this is the *Nominal size*, meaning the *inside diameter* is 1/2 inch; if a second number is present it represent the *threads per inch*

When bolt or capscrew is identified as **1/2 - 16 x 2"**, this means the *Nominal size*, or *body diameter* is 1/2 inch; the second number represents the *threads per inch* (16 in this example, and the final number is the *body length* of the bolt or screw (in this example 2 inches long).

**The guides and ruler furnished below are designed to help you select the appropriate hardware and tools.**



## Torque Specification Chart

FOR STANDARD MACHINE HARDWARE (Tolerance ± 20%)

Hardware Grade	No Marks		SAE Grade 2		SAE Grade 5		SAE Grade 8	
	in/lbs	Nm.	in/lbs	Nm.	in/lbs	Nm.	in/lbs	Nm.
8-32	19	2.1	30	3.4	41	4.6		
8-36	20	2.3	31	3.5	43	4.9		
10-24	27	3.1	43	4.9	60	6.8		
10-32	31	3.5	49	5.5	68	7.7		
1/4-20	66	7.6	8	10.9	12	16.3		
1/4-28	76	8.6	10	13.6	14	19.0		
5/16-18	11	15.0	17	23.1	25	34.0		
5/16-24	12	16.3	19	25.8	27	34.0		
3/8-16	20	27.2	30	40.8	45	61.2		
3/8-24	23	31.3	35	47.6	50	68.0		
7/16-14	30	40.8	50	68.0	70	95.2		
7/16-20	35	47.6	55	74.8	80	108.8		
1/2-13	50	68.0	75	102.0	110	149.6		
1/2-20	55	74.8	90	122.4	120	163.2		
9/16-12	65	88.4	110	149.6	150	204.0		
9/16-18	75	102.0	120	163.2	170	231.2		
5/8-11	90	122.4	150	204.0	220	299.2		
5/8-18	100	136	180	244.8	240	326.4		
3/4-10	160	217.6	260	353.6	386	525.0		
3/4-16	180	244.8	300	408.0	420	571.2		
7/8-9	140	190.4	400	544.0	600	816.0		
7/8-14	155	210.8	440	598.4	660	897.6		
1-8	220	299.2	580	788.8	900	1,244.0		
1-12	240	326.4	640	870.4	1,000	1,360.0		

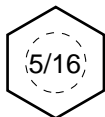
### NOTES

- These torque values are to be used for all hardware excluding: locknuts, self-tapping screws, thread forming screws, sheet metal screws and socket head setscrews.
- Recommended seating torque values for locknuts:
  - for prevailing torque locknuts - use 65% of grade 5 torques.
  - for flange whizlock nuts and screws - use 135% of grade 5 torques.
- Unless otherwise noted on assembly drawings, all torque values must meet this specification.

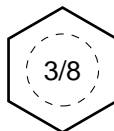
## Wrench & Fastener Size Guide



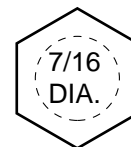
1/4" Bolt or Nut  
Wrench—7/16"



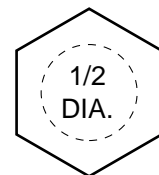
5/16" Bolt or Nut  
Wrench—1/2"



3/8" Bolt or Nut  
Wrench—9/16"



7/16" Bolt or Nut  
Wrench (Bolt)—5/8"  
Wrench (Nut)—11/16"



1/2" Bolt or Nut  
Wrench—3/4"