



photo: ralph man, model: lina c/o model-pool / düsseldorf, makeup / hair: diana fabbricatore

Sinar Hy6 65.
Innovation and integration.

A Jenoptik Company

sinar



Sinar Hy6 65. System integration at its best.

Sinar has designed the Sinar Hy6 65 as a truly integrated digital medium-format camera system that offers photographers maximum ease of use for mobile applications and an optimum workflow combined with outstanding image quality – the perfect solution wherever moving subjects need to be caught in action.

Taking digital medium-format photography to the next level

Thanks to the seamless integration of high-quality system components with optimized communication between lens, camera body, digital engine, and software, the Sinar Hy6 65 allows the photographer to concentrate on capturing excellent images. No guesswork, no disturbing cables, no manual synchronization of different components – the Sinar Hy6 65 fully supports the photographer in their creative process.

Furthermore, the Sinar Hy6 embodies everything you can expect from a state-of-the-art camera system. As well as its precise autofocus and exposure metering system, it brings innovative features such as focus trap and focus bracketing to the world of medium-format. Thanks to its between-the-lens shutter, it features the fastest flash sync speed for medium-format camera systems of 1/1000 second, allowing you to freeze-frame even very fast motion.

A philosophy rather than a format

The 6x6 design of the Sinar Hy6 camera body gives the photographer an entirely different approach to their creative work. They can conveniently arrange their images with the large, bright focusing screen and interchangeable viewfinders, and switch the image orientation from landscape to portrait without having to turn the camera. Only 6x6 medium-format cameras with the appropriate viewfinders can offer such convenience when creating pictures with extraordinary perspectives.

Putting everything into the right perspective

The Sinar Hy6 65 offers access to a wide range of high-quality AFD lenses with the resolving power and image quality required for high-end and high-resolution digital imaging. It is also compatible with the manual focus and AF lenses of the successful Rollei 6008 camera system. Thanks to this access to such a wide range of lenses, the Sinar Hy6 65 ensures that you can capture your images with the intended perspective and scale of reproduction at the required quality level.



The hardware dials and knobs allow fast and intuitive operation of the camera.



The large, square focusing screen allows rotation of the digital back without changing the photographer's view and the camera perspective.





Sinar Hy6-s65r. Give it the special twist.

As well as the aforementioned features, the Sinar Hy6-s65r model includes Sinar's unique revolving adapter for the Sinar Hy6. This allows you to switch the image orientation from landscape to portrait with a simple twist of the back – without detaching the back from the camera body – hence allowing convenient, safe, and dust-free operation. Moreover, the Sinar Hy6-s65r includes additional features such as live image for precise image composition and focusing and additional data storage format options.

Fast image processing on board

With both the Sinar Hy6 65 and the Sinar Hy6-s65r camera, images are captured with a 31 million pixel CCD sensor with an imaging area that is almost twice the size of a full-frame 35 mm camera system. Thanks to their QCIP technology (QuadCore Image Processing), these Sinar Hy6 camera models are the first digital medium-format cameras with fully integrated digital image processing on board. Image processing settings such as contrast, saturation, and noise suppression can be set directly on the camera system for fast and easy processing of the captured images.

Future-oriented data storage

The high-speed data transfer of the Sinar Hy6 65 and Sinar Hy6-s65r models allows you to take pictures at fast capturing rates and store them to CF card in DNG and JPEG format. For the best capturing performance and image quality, the Sinar Hy6-s65r and Sinarback eSprit 65 also support the well-proven Sinar RAW file format. Alternatively, depending on the model, two image file formats DNG+JPG or RAW+JPG can be stored simultaneously. JPEG images can be stored in four different file sizes and two compression rates. Thus, you can send low-resolution JPEGs to the art director or agency immediately after the shoot and process the selected high-resolution images later on.

Innovative operation and power supply concept

The Sinar Hy6 65 and the Sinar Hy6-s65r feature a very bright, high-resolution 3" display that changes its orientation according to the orientation of the camera. The hardware keys and track ball ensure the easiest, intuitive operation without the hassle of navigating through complex menu structures.

The dual power supply concept of the Sinar Hy6 65 allows the camera system to be operated with one single battery in the camera's handgrip for minimum weight. Alternatively, a second battery can be placed inside the digital unit for maximum operation time.



Sinar's revolving adapter allows the back's orientation to be safely changed without removing it from the camera.



The Sinar Hy6 handgrip (patent pending) can easily be rotated to the most suitable ergonomic position.



Sinarback eSprit 65. For maximum flexibility.

With the Sinarback eSprit 65, Sinar also offers the innovations of the Sinar Hy6-s65r to photographers who need maximum flexibility in using their equipment.

Thanks to a set of interchangeable adapters, the innovative features of the Sinar Hy6-s65r are available not only in combination with the Sinar Hy6 camera but also with other camera bodies. Hence, the photographer can flexibly choose their equipment according to the requirements of the current job, simply by changing the adapter plate.

Sinar eXposure™ software – Integrating your camera system into your workflow

The Sinar Hy6 65, the Sinar Hy6-s65r, and the Sinarback eSprit 65 come with the latest edition of the well-received Sinar eXposure™ software, a professional application designed to capture, manage, and process high-quality digital images. Thanks to the seamless system integration, you can also control your Sinar Hy6 digital camera and Sinar digital back remotely.

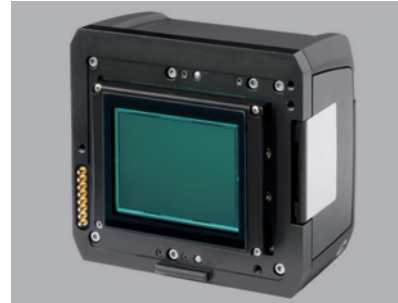
The Sinar eXposure™ software is available for Apple Mac OS and for Microsoft Windows-based computer systems and takes full advantage of today's commonly used computers with multi-core processors for optimum speed. Because Sinar eXposure™ stores images in the standardized Adobe DNG file format, it fits seamlessly into your desired workflow, allowing you to use the software package of your choice to manage and process your images.

Highlights

- Innovative 6x6 camera format
- Easily rotatable handgrip for most suitable ergonomic position
- Intuitive operation thanks to hardware dials and flat menu structure
- Unique native DNG image files for flexible use of image processing software of your choice
- On-board JPEG image files with four selectable sizes and two compression rates for fast Internet transfer
- Alternatively, two image file formats can be stored simultaneously
- Automatic orientation of the display for comfortable reading
- Automatic white balance
- Best suited for fashion shoots with up to 0,9 exposures per second, fast flash sync time and a sensitivity of up to ISO 800

On top of that, the Sinar Hy6-s65r model and the Sinarback eSprit 65 also feature:

- Storing Sinar RAW image file format for best capturing performance and image quality
- Well proven optional Sinar Revolving Adapter for safely changing the orientation of the back
- Live image for pixel-accurate focusing



Thanks to a set of interchangeable adapters, the innovative features of the Sinarback eSprit 65 can be used on the Sinar Hy6 and also with other camera bodies.



The Sinar eXposure™ capturing software offers every advantage for a professional workflow.





Digital Features	Sinar Hy6 65	Sinar Hy6-s65r	Sinarback eSprit 65
Sensor type	Kodak KAF31600CE CCD with full-frame technology and microlenses		
Sensor size	6496 x 4872 pixels (31.6 million pixels), 44 x 33 mm		
Display	3" with 640 x 480 pixels (280 ppi), automatic menu orientation Images, histogram, sensitivity, on-board exposure warning, memory status, white balance		
File formats	<ul style="list-style-type: none"> • DNG / DNG compressed • JPEG (four file sizes: 31, 17, 8, 3 million pixels / two compression rates) • DNG + JPEG 	<ul style="list-style-type: none"> • DNG / DNG compressed • Sinar RAW • JPEG (four file sizes: 31, 17, 8, and 3 million pixels / two compression rates) • DNG + JPEG as well as Sinar RAW + JPEG 	
File size	60 MB (DNG and Sinar RAW 16 bit), 181/90 MB (TIFF 48/24 bit)		
Capture rate	Up to 0.9 exposures per second		
Live image	n.a.		Yes
Exposure time	1/10000 second up to 32 seconds		
Nominal sensitivity	ISO 200-800		
Image processing	Fast on-board QuadCore Image Processing (QCIP)		
White balance	Automatic, presets, manual		
Data storage	High-Speed CF Card Type I (4 GB UDMA CF card included), alternatively also directly on hard disk via Firewire		
Active cooling	Yes (ventilator)		
Power supply	Alternatively, one or two rechargeable lithium-ion batteries	Two rechargeable lithium-ion batteries for long-lasting operation	Alternatively, with rechargeable lithium-ion battery or from computer via Firewire cable
Operating time with battery	Up to 2000 exposures		
Firewire interface	IEEE 1394b (800 Mbps, compatible with IEEE 1394a 400 Mbps)		
Capturing software	Sinar eXposure™ 6.1 or later		
Operating systems	Mac OS X as of 10.4.11, Windows XP as of Service Pack 2, Windows Vista as of Service Pack 1		
Computer requirements (recommended)	Apple Macintosh with Intel Core 2 Duo 2 GHz or faster processors with 2 GB RAM Windows-compatible PC with Intel Core 2 Duo 2 GHz or faster processors with 2 GB RAM		
Operating temperature	0 – 45 °C / 32 – 113 °F		
Dimensions and weight	196 x 157 x 112 mm, 1,9 kg	196 x 157 x 112 mm, 1,9 kg	90 x 87 x 65 mm, 590 g
Camera interface	Sinar Hy6	Sinar Hy6, Sinar m, Hasselblad V/500 series, Hasselblad H1/H2, Mamiya 645 AFD/AFD II	

Camera Features	Sinar Hy6 65 / Sinar Hy6-s65r
Camera type	Single-lens autofocus reflex camera with multi-mode automatic exposure control, variable metering pattern, automatic TTL flash (SCA 3000), and motor-driven film transport.
Autofocus	<ul style="list-style-type: none"> • Metering range autofocus cross sensor: 1 to 19 EV at ISO 100/21° with 2.8/80 mm lens • Integrated red-light grid projector for AF metering in low ambient light conditions
Shutter	Electronically controlled between-the-lens shutter from 1/1000 (with PQS lenses) to 32 seconds (with film up to 68 minutes), B, and T
Viewfinder system	Waist-level finder with swing-out magnifier, 90° high-eyepoint reflex finder with adjustable diopters, 45° prism finder
Information in viewfinder	Illuminated LC finder display for: Focusing status, shutter speed, aperture (with 1/3 f-stop increments), light balance for manual exposure metering and exposure compensation, spot/multi-spot mode, flash-ready indicator, TTL flash exposure control, frame counter, portrait or landscape format with 4.5x6 cm, battery status
Action Grip	Locks in four positions (for waist-level finder, 45°- or 90°-viewfinder mode) with detachable leather hand strap
Tripod	Quick-clamping tripod plate with 1/4" and 3/8" tripod threads
Exposure metering	<ul style="list-style-type: none"> • Spot, center-weighted multi-zone and integral metering • Automatic stray-light compensation during metering • Integrated RGB sensor for automatic white balance for digital photography • 0 to 19 EV at ISO 100/21° with 2.8/80 mm lens
Exposure modes	Shutter priority AE, aperture priority AE, program AE with fastest shutter speed priority, metered manually in steps of 1/3 f-stops
Exposure compensation	Manually adjustable from -4 2/3 to +2 EV in 1/3 f-stops, via automatic bracketing control (in S± position) in steps of 1/3, 2/3 and 1 EV
Multiple exposures	With electronic film-transport suppression, without screen image
Automatic flash	<ul style="list-style-type: none"> • TTL flash metering on the film plane, 25 – 1600 ISO • Flash-ready and exposure-control is displayed in the viewfinder. • Automatic flash activation capability with Metz flash units in low ambient light conditions
Flash synchronization	With all shutter speeds up to and including 1/1000 second
Exposures on film	<ul style="list-style-type: none"> • With removable film magazine 4.5x6 cm with pre-loadable film cartridge. 6x6 cm film magazine in preparation • 120/220 roll film for 16/32 shots in 4.5x6 cm format
Lenses	AFD lenses: 35, 50, 80, 150, 180, and zoom 60-140 mm, and all Rolleiflex 6008-compatible AF and non-AF lenses
Camera control	<ul style="list-style-type: none"> • On the camera via its own controls and dials • Full remote access and control from computer via Sinar eXposure™ capture software and the connected Sinarback