



User Manual
SWE1210

Multi Function Access Point

Table of Contents

| | | |
|----------|--|-----------|
| 1 | Introduction | 1 |
| 1.1 | Features and Benefits..... | 1 |
| 1.2 | Package Contents..... | 2 |
| 1.3 | System Requirements..... | 3 |
| 1.4 | Applications | 3 |
| 2 | Before you Begin | 5 |
| 2.1 | Considerations for Wireless Installation | 5 |
| 2.2 | Computer Settings (Windows XP/Windows 7)..... | 6 |
| 2.3 | Apple Mac X OS | 9 |
| 2.4 | Hardware Installation..... | 10 |
| 3 | Configuring Your Access Point | 12 |
| 3.1 | Default Settings | 12 |
| 3.2 | Web Configuration..... | 13 |
| 4 | Status | 15 |
| 4.1 | Save/Reload | 15 |
| 4.2 | Main..... | 16 |
| 4.3 | Wireless Client List..... | 18 |
| 4.4 | System Log | 19 |
| 5 | System | 20 |
| 5.1 | Operation Mode..... | 20 |
| 5.2 | IP Settings..... | 22 |
| 5.3 | Spanning Tree Setting..... | 23 |

| | | |
|----------|--|-----------|
| 6 | Wireless | 25 |
| 6.1 | Wireless Network..... | 25 |
| 6.2 | Wireless Security | 28 |
| 6.3 | Wireless MAC Filter | 32 |
| 6.4 | Wireless Advanced | 33 |
| 6.5 | WPS (Wi-Fi Protected Setup)..... | 35 |
| 6.6 | WDS Link Settings..... | 37 |
| 7 | Management..... | 39 |
| 7.1 | Administration..... | 39 |
| 7.2 | Management VLAN..... | 40 |
| 7.3 | SNMP..... | 41 |
| 7.4 | Backup/Restore..... | 43 |
| 7.5 | Firmware Upgrade | 44 |
| 7.6 | Time Setting..... | 45 |
| 7.7 | Log..... | 46 |
| 7.8 | Diagnosis..... | 47 |
| 7.9 | LED Control | 48 |
| 7.10 | Logout..... | 49 |
| 7.11 | Reset | 50 |
| 8 | Building a Wireless Network | 51 |
| 8.1 | Access Point Mode..... | 51 |
| 8.2 | Access Point Mode with WDS Function (WDS AP mode)..... | 52 |
| 8.3 | WDS Bridge Mode..... | 53 |
| | FCC Interference Statement | 54 |

1 Introduction

The **SWE1210** is a Gigabit wired multi-functioned 802.11b/g/n product with 3 major functions. It is designed to operate in every working environment for enterprises.

The SWE1210 is a Wireless Network device that delivers up to 6x faster speeds and 7x extended coverage than 802.11b/g devices. The SWE1210 supports use in the home/office network with superior throughput, performance, and unparalleled wireless range.

To protect data during wireless transmissions, the SWE1210 encrypts all wireless transmissions through WEP data encryption and supports WPA/WPA2 encryption. Its MAC address filter allows users to select stations to access the network. The SWE1210 is an ideal product to ensure network safety for both home and SMB environments.

1.1 Features and Benefits

| Features | Benefits |
|---|--|
| High Speed Data Rate Up to 300Mbps | Capable of handling heavy data payloads such as MPEG video streaming. |
| 10/100/1000 Fast Ethernet | Support up to 1Gbps networking speed. |
| IEEE 802.11n draft Compliant and backward compatible with 802.11b/g | Fully compatible with IEEE 802.11b/g/n devices. |
| Multi-Function, 3 functions | Allowing users to select AP, WDS AP or WDS Bridge mode in various applications. |
| Point-to-point, Point-to-multipoint Wireless Connectivity | Allow transferring data from building to building. |

| | |
|---|---|
| Support Multi-SSID function (4 SSID) in AP mode | Allows clients to access different networks through a single access point and assign different policies and functions for each SSID through the built in software. |
| WPA2/WPA/ IEEE 802.1x support | Powerful data security. |
| MAC address filtering in AP mode | Ensuring secure network connection. |
| User isolation support (AP mode) | Protecting the private network between client users. |
| Power-over-Ethernet (IEEE802.3af) | Flexible Access Point locations and saving cost. |
| Save User Settings | Firmware upgrade does not delete user settings. |
| SNMP Remote Configuration Management | Allows remote connection to configure or manage the SWE1210 easily. |
| QoS (WMM) support | Enhancing user performance and density. |

1.2 Package Contents

The package contains the following items. In case of return, please keep the original box set, and the complete box set must be included for full refund.

- SWE1210
- 12V/1A 100V~240V Power Adapter
- RJ-45 Ethernet LAN Cable
- CD-ROM with User's Manual
- Quick Guide

1.3 System Requirements

The following are the minimum system requirements in order to configure the device.

- Computer with an Ethernet interface or Wireless Network.
- Windows, Mac OS, or Linux based operating systems.
- Web-Browsing Application (example: Internet Explorer, FireFox, Safari, or other similar software)

1.4 Applications

Access Point products are easy to install and highly efficient. The following list describes some of the many applications made possible through the power and flexibility of the use of Wireless Access Points:

a) **Difficult-to-Wire Environments**

There are many situations where wires cannot be laid easily. Historic buildings, older buildings, multiple buildings, and/or open areas make the installation of a Wired LAN impossible, impractical, and/or expensive.

b) **Temporary Workgroups**

Consider situations in open areas such as parks, athletic arenas, exhibition centers, temporary offices, and construction sites where one wants a temporary Wireless LAN established and easily removed.

c) **The Ability to Access Real-Time Information**

Doctors/Nurses, Point-of-Sale Employees, and/or Warehouse Workers can access real-time information while dealing with patients, serving customers, and/or processing information.

d) **Frequently changed environments**

Show rooms, meeting rooms, retail stores, and manufacturing sites where the network connection needs to frequently be taken down.

e) Small Office and Home Office (SOHO) Networks

SOHO users need a cost-effective, easy and quick installation of a small network.

f) Wireless Extensions to Ethernet networks

Network managers in dynamic environments can minimize the overhead caused by moves, extensions to networks, and other changes with wireless LANs.

g) Wired LAN backup

Network managers implement wireless LANs to provide backup for mission-critical applications running on wired networks.

h) Training/Educational facilities

Training sites at corporations and students at universities use wireless connectivity to ease access to information, information exchanges, and learning.

2 Before you Begin

This section will guide you through the installation process. Placement of the Siselectron SWE1210 is very important to maximize the SWE1210's performance. Avoid placing the SWE1210 in an enclosed space such as a closet, cabinet, or wardrobe.

2.1 Considerations for Wireless Installation

The operating distance of all wireless devices cannot be pre-determined due to a number of unknown obstacles in the environment that the device is deployed in. These could be the number, thickness, and location of walls, ceilings, or other objects that the wireless signals must pass through. Here are some key guidelines to ensure that you have the most optimal wireless range.

- Keep the number of walls and/or ceilings between the SWE1210 and other network devices at minimum. Each wall and/or ceiling can reduce the signal strength, resulting in lower signal strength.
- Building materials makes a difference. A solid metal door and/or aluminium studs may have a significant negative effect on the signal strength of the SWE1210. Locate your wireless devices carefully so the signal can pass through a drywall and/or open doorways. Materials such as glass, steel, metal, concrete, water (example: fish tanks), mirrors, file cabinets, and/or brick can also lower your wireless signal strength.
- Interferences can also come from other electrical devices and/or appliances that generate RF noise. The most usual types are microwaves and cordless phones.

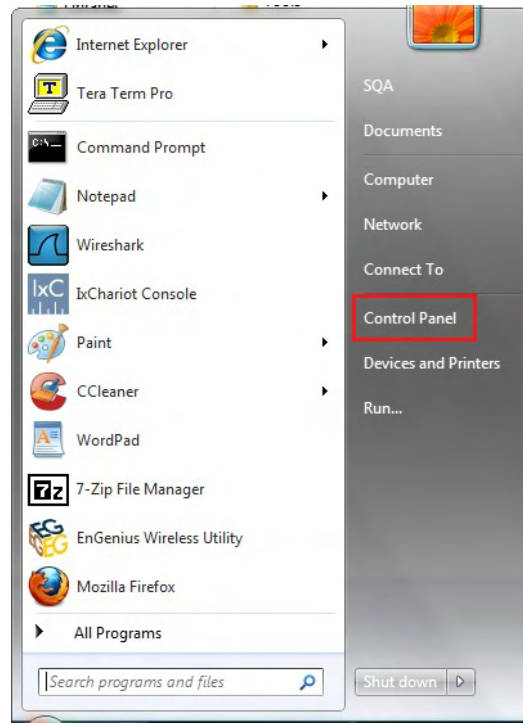
2.2 Computer Settings (Windows XP/Windows 7)

In order to use the SWE1210, you must configure the TCP/IPv4 connection of your computer system.

- Click **Start** button and select **Control Panel**.



Windows XP

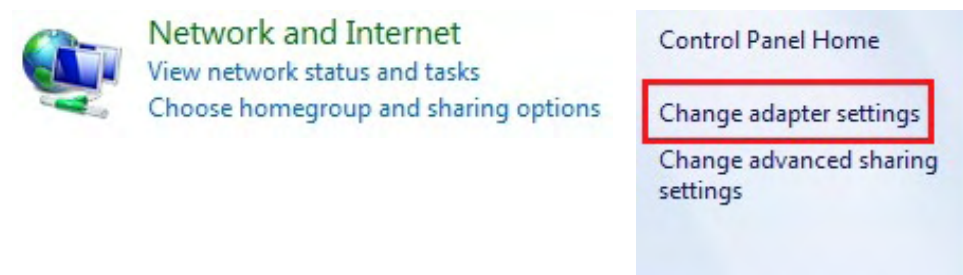


Windows Vista/Windows 7

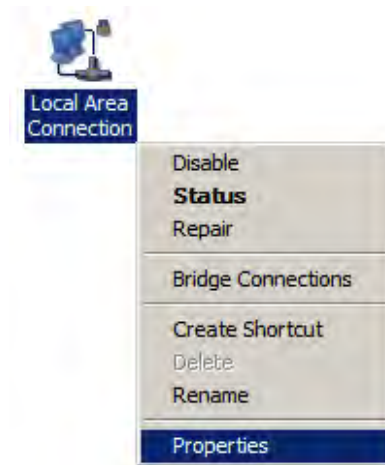
- In **Windows XP**, click **Network Connections**



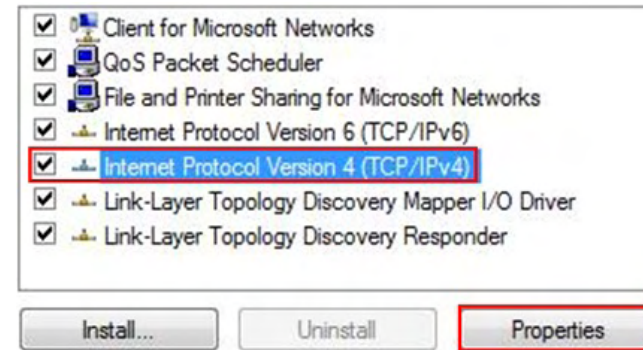
- In **Windows 7**, click **View Network Status and Tasks** in the **Network and Internet** section, then select **Change Adapter Settings**



- Right click on **Local Area Connection** and select **Properties**



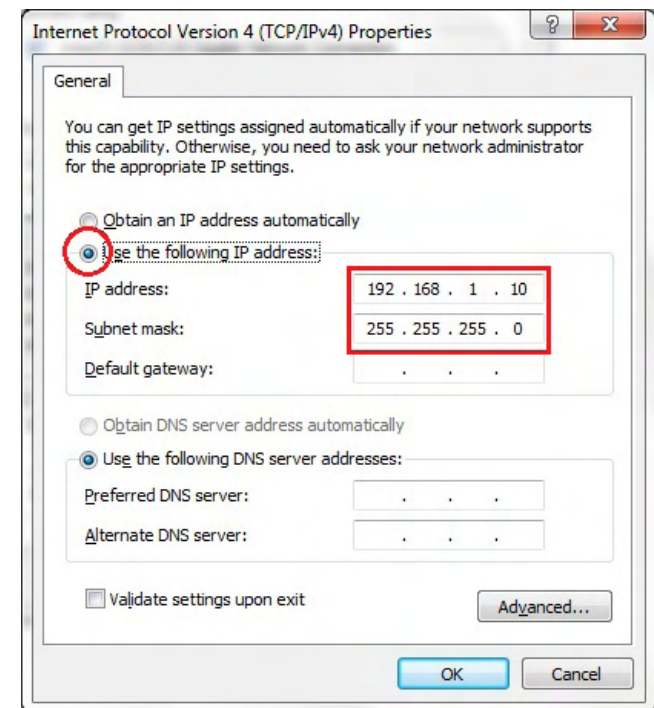
- Highlight **Internet Protocol Version 4 (TCP/IPv4)** and select **Properties**



- Select **Use the following IP address** and enter IP address and subnet mask then press **OK**.

Note: Ensure that the IP address and subnet mask are on the same subnet as the device.

For example: Device IP address: 192.168.1.1
PC IP address: 192.168.1.2 - 192.168.1.999
PC subnet mask: 255.255.255.0



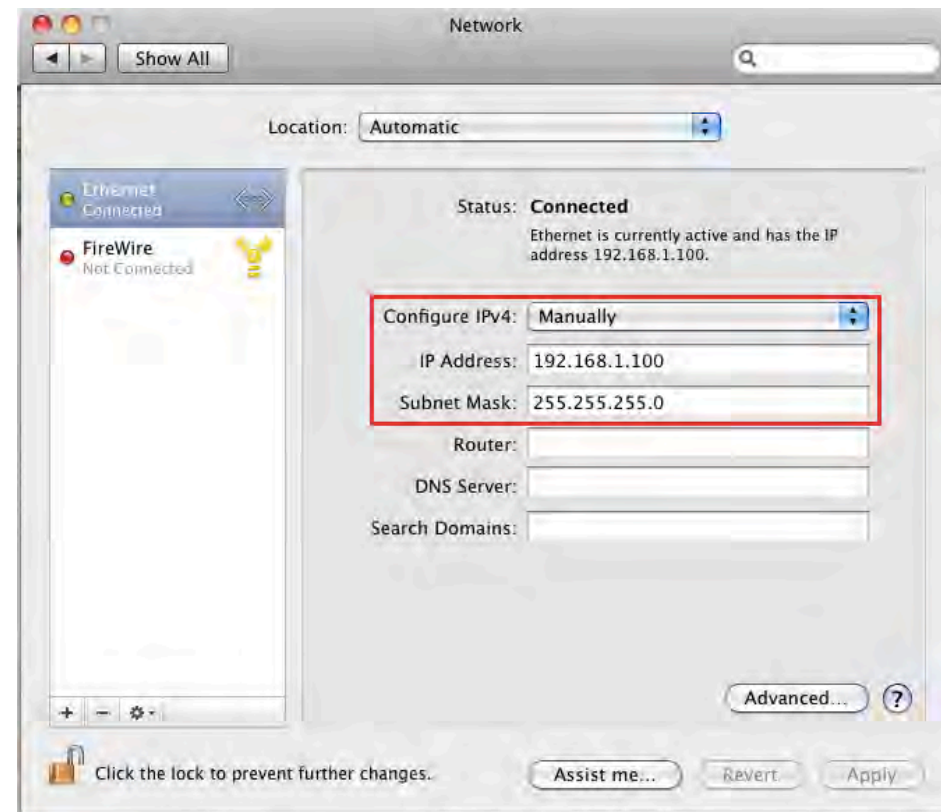
2.3 Apple Mac X OS

- Open the **System Preferences** (can be opened in the **Applications** folder or selecting it in the Apple Menu)
- Select **Network** in the **Internet & Network** section
- Highlight **Ethernet**
- In **Configure IPv4**, select **Manually**
- Enter IP address and subnet mask then press **OK**.

Note: Ensure that the IP address and subnet mask are on the same subnet as the device.

For example: Device IP address: 192.168.1.1
PC IP address: 192.168.1.2 - 192.168.1.999
PC subnet mask: 255.255.255.0

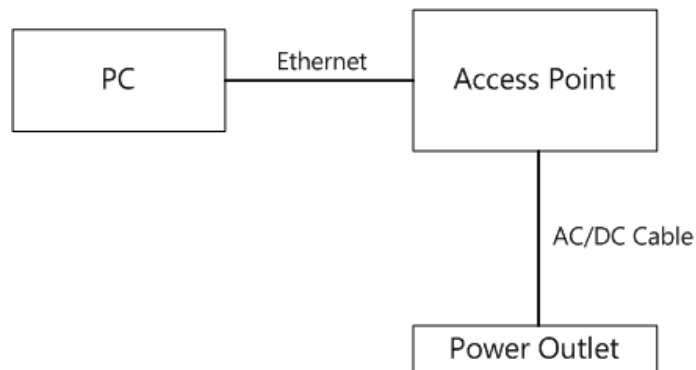
- Click **Apply** when done.



2.4 Hardware Installation

- 1) Ensure that the computer in use has an Ethernet Card (RJ-45 Ethernet Port). For more information, verify with our computer user manual.
- 2) Connect one end of the Category 5 Ethernet cable into RJ-45 port of the SWE1210 and the other end to the RJ-45 port on the computer that will use the SWE1210. Ensure that the cable is securely connected to both the SWE1210 and the Computer.
- 3) Connect the Power Adaptor DC Inlet to the **DC-IN** port of the SWE1210 and the Power Adaptor to the electrical out. Once both connections are secure, verify the following:
 - a) Ensure that the **Power** light is on (it will be blue).
 - b) Ensure that the **Wireless** light is on (it will be blue).
 - c) Ensure that the **LAN (Computer/SWE1210 Connection)** light is on (it will be blue).
 - d) Once all three lights are on, proceed to setting up the computer.

This diagram depicts the hardware configuration.

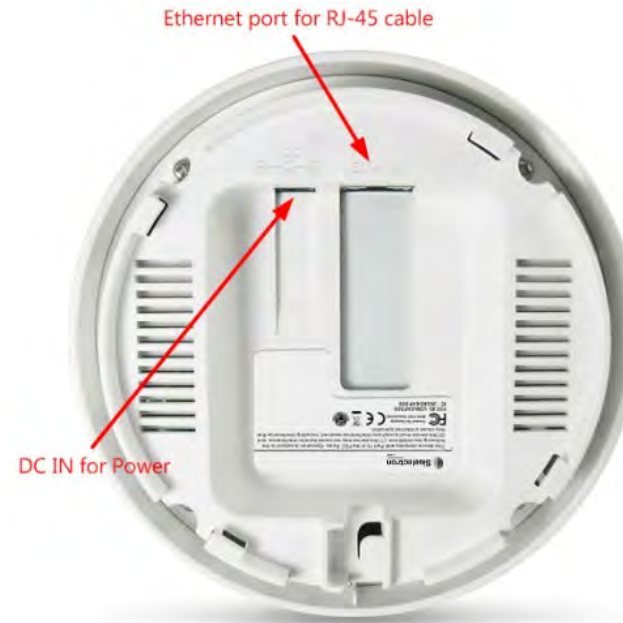




Reset button

LED lights for wireless,
Ethernet port and power

Front Panel



Ethernet port for RJ-45 cable

DC IN for Power

Rear Panel

| Front Panel | |
|----------------------|--|
| Reset Button | Press and hold the "Reset" button by 10 seconds to reset SWE1210 to factory default. |
| LED Lights | LED lights for Wireless, Ethernet LAN port, and Power. |
| Rear Panel | |
| DC IN | DC IN for Power. |
| Ethernet Port | Ethernet port for RJ-45 cable. |

3 Configuring Your Access Point

This section will show you how to configure the device using the web-based configuration interface.

3.1 Default Settings

Please use your Ethernet port or wireless network adapter to connect the Access Point.

Default Settings

| | |
|---------------------|-------------------|
| IP Address | 192.168.1.1 |
| Username / Password | admin / admin |
| Operation Mode | Access Point |
| Wireless SSID | Siselectronxxxxxx |
| Wireless Security | None |

Note: xxxxxx represented in the wireless SSID above is the last 6 characters of your device MAC Address. This can be found on the device body label and is unique for each device.

3.2 Web Configuration

- Open a web browser (Internet Explorer/Firefox/Safari) and enter the IP Address: **http://192.168.1.1**
Note: If you have changed the default LAN IP Address of the Access Point, ensure you enter the correct IP Address.



- The default username and password are **admin**. Once you have entered the correct username and password, click the **Login** button to open the web-base configuration page.

A screenshot of the Siselectron Technology login page. The page has a light gray background with a rounded rectangle border. At the top, it says "Siselectron Technology". Below that, there are two input fields: "Username:" with the text "admin" and "Password:" with the text "admin". At the bottom, there are two buttons: "Login" and "Reset".

- If successful, you will see the SWE1210 User Menu



The screenshot shows the Siselectron web interface for the SWE1210 device. The interface is divided into a left sidebar menu and a main content area. The sidebar menu includes sections for Status, System, Wireless, and Management. The main content area is titled 'Main' and contains two tables: 'System Information' and 'LAN Settings'. The 'System Information' table lists details such as Device Name (SWE1210), Ethernet Main MAC Address (00:93:00:00:00:05), Wireless MAC Address (S SID/MAC) with 8 entries (1: 88:DC:96:41:CD:6C, 2-8: N/A), Country (United States), Current Time (Tue Nov 24 09:31:19 UTC 2015), Firmware Version (2.0.1), and Management VLAN ID (Untagged). The 'LAN Settings' table lists IP Address (192.168.1.1), Subnet Mask (255.255.255.0), Default Gateway (192.168.1.1), Primary DNS (0.0.0.0), Secondary DNS (0.0.0.0), DHCP Client (Disabled), IPv6 IP Address (None), IPv6 Link-Local Address (FE80::293:FF:FE00:6), IPv6 Default Gateway, and IPv6 Primary DNS.

Access Point

System Information

| | |
|----------------------------------|------------------------------|
| Device Name | SWE1210 |
| Ethernet Main MAC Address | 00:93:00:00:00:05 |
| Wireless MAC Address (S SID/MAC) | 1 88:DC:96:41:CD:6C |
| | 2 N/A |
| | 3 N/A |
| | 4 N/A |
| | 5 N/A |
| | 6 N/A |
| | 7 N/A |
| | 8 N/A |
| Country | United States |
| Current Time | Tue Nov 24 09:31:19 UTC 2015 |
| Firmware Version | 2.0.1 |
| Management VLAN ID | Untagged |

LAN Settings

| | |
|-------------------------|---------------------|
| IP Address | 192.168.1.1 |
| Subnet Mask | 255.255.255.0 |
| Default Gateway | 192.168.1.1 |
| Primary DNS | 0.0.0.0 |
| Secondary DNS | 0.0.0.0 |
| DHCP Client | Disabled |
| IPv6 IP Address | None |
| IPv6 Link-Local Address | FE80::293:FF:FE00:6 |
| IPv6 Default Gateway | |
| IPv6 Primary DNS | |

4 Status

The **Status** section contains the following options: Save/Reload, Main, Wireless Client List, and System Log. The following sections describe these options.

4.1 Save/Reload

This page let you save and apply settings shown under **Unsaved changes list**, or allow you to cancel unsaved changes and revert to the previous settings that were in effect.

Save/Reload

[Home](#)[Reset](#)

Unsaved changes list

```
-network.1.ifname
-network.4.ifname
-network.3.ifname
-network.2.ifname
wireless.cfg0de25d.WLANWpaAccEnable=0
wireless.cfg036f4e.wps_configured=1
wireless.cfg036f4e.key=12345678
wireless.cfg036f4e.encryption=psk-mixed tkip+aes
wireless.cfg036f4e.WLANWpaRadiusAccSrvIP=...
wireless.cfg036f4e.hidden=0
wireless.cfg036f4e.server=...
-wireless.cfg0bb08c.WLANWDSPeer
```

[Save & Apply](#)[Revert](#)

4.2 Main

Clicking the **Main** link under the **Status** menu or clicking **Home** at the top-right of the Web Configurator shows status information about the current operating mode.

- The **System Information** section shows general system information such as device name, MAC address, current time, firmware version and management VLAN ID.

| System Information | |
|---------------------------------|------------------------------|
| Device Name | SWE1210 |
| Ethernet Main MAC Address | 00:93:00:00:00:06 |
| Wireless MAC Address (SSID/MAC) | 1 88:DC:96:41:CD:6C |
| | 2 N/A |
| | 3 N/A |
| | 4 N/A |
| | 5 N/A |
| | 6 N/A |
| | 7 N/A |
| | 8 N/A |
| Country | United States |
| Current Time | Wed Nov 25 08:19:48 UTC 2015 |
| Firmware Version | 2.0.1 |
| Management VLAN ID | Untagged |

- The **LAN Settings** section shows Local Area Network setting such as the LAN IP address, subnet mask, and DNS address.

LAN Settings

| | |
|-------------------------|---------------------|
| IP Address | 192.168.1.201 |
| Subnet Mask | 255.255.255.0 |
| Default Gateway | 192.168.1.1 |
| Primary DNS | 0.0.0.0 |
| Secondary DNS | 0.0.0.0 |
| DHCP Client | Disabled |
| IPv6 IP Address | None |
| IPv6 Link-Local Address | FE80::293:FF:FE00:6 |

- The **Current Wireless Settings** section shows wireless information such as operating mode, frequency and channel. Since the SWE1210 supports multiple-SSIDs, information about each SSID, such as its ESSID and security settings are displayed.

Current Wireless Settings

| | |
|--|--------------------------------|
| Operation Mode | Access Point |
| Wireless Mode | IEEE 802.11b/g/n Mixed |
| Channel Bandwidth | 20-40 MHz |
| Frequency/Channel | 2.462 GHz (Channel 11) |
| Profile Settings (SSID/Security/VID/802.1Q) | 1 Siselectron000006/None/1/OFF |
| | 2 N/A |
| | 3 N/A |
| | 4 N/A |
| | 5 N/A |
| | 6 N/A |
| | 7 N/A |
| | 8 N/A |
| Spanning Tree Protocol | Disabled |
| RX(Packets) | 522.534 KB (2603 PKts.) |
| TX(Packets) | 18.4907 MB (162769 PKts.) |

4.3 Wireless Client List

Clicking the **Wireless Client List** link under the **Status** menu displays the list of clients currently associated to the SWE1210, along with the MAC addresses and signal strength for each client. Clicking the **[Refresh]** button updates (refreshes) the client list.

Note: Only in Access Point and WDS AP mode.

Client List

[Home](#)[Reset](#)

| SSID:# | MAC Address | RSSI(dBm) |
|----------|-------------------|-----------|
| SSID1:#1 | 00:02:6f:47:65:ca | -40 |
| SSID1:#2 | 00:02:6f:4d:f2:1e | -36 |
| SSID1:#3 | 00:02:6f:11:ac:93 | -38 |

[Refresh](#)

4.4 System Log

The SWE1210 automatically logs (records) the system events and actions of the SWE1210. To view the logged information, click the **System Log** link under the **Status** menu. If there is not enough internal memory to log all events, older events will be deleted from the log. When powered down or rebooted, the log will be cleared.

System Log
Home
Reset

Show log type All ▼

```

Nov 25 08:40:03 SWE1210 user.notice root: starting ntpclient
Nov 25 08:40:01 SWE1210 cron.info crond[2045]: crond: USER root pid 1505 cmd . /etc/hotplug.d/iface/20-ntpclient start
Nov 25 08:35:03 SWE1210 user.notice root: starting ntpclient
Nov 25 08:35:01 SWE1210 cron.info crond[2045]: crond: USER root pid 1490 cmd . /etc/hotplug.d/iface/20-ntpclient start
Nov 25 08:34:58 SWE1210 user.warn kernel: Node deleted (NC = 0)
Nov 25 08:34:42 SWE1210 user.warn kernel: Node Added (NC = 1)
Nov 25 08:33:48 SWE1210 user.warn kernel: Node deleted (NC = 0)
Nov 25 08:33:20 SWE1210 user.warn kernel: Node deleted (NC = 1)
Nov 25 08:33:20 SWE1210 user.warn kernel: Node Added (NC = 2)
Nov 25 08:33:00 SWE1210 user.warn kernel: Node Added (NC = 1)
Nov 25 08:30:03 SWE1210 user.notice root: starting ntpclient
Nov 25 08:30:01 SWE1210 cron.info crond[2045]: crond: USER root pid 1475 cmd . /etc/hotplug.d/iface/20-ntpclient start
Nov 25 08:25:03 SWE1210 user.notice root: starting ntpclient
Nov 25 08:25:01 SWE1210 cron.info crond[2045]: crond: USER root pid 1460 cmd . /etc/hotplug.d/iface/20-ntpclient start
Nov 25 08:24:25 SWE1210 user.warn kernel: Node deleted (NC = 0)
Nov 25 08:23:31 SWE1210 user.warn kernel: Node deleted (NC = 0)
Nov 25 08:23:31 SWE1210 user.warn kernel: Node Added (NC = 1)
Nov 25 08:22:59 SWE1210 user.warn kernel: Node deleted (NC = 0)
Nov 25 08:22:59 SWE1210 user.warn kernel: Node Added (NC = 1)
Nov 25 08:22:03 SWE1210 user.warn kernel: Node deleted (NC = 0)
Nov 25 08:22:03 SWE1210 user.warn kernel: Node Added (NC = 1)
Nov 25 08:21:43 SWE1210 user.warn kernel: Node deleted (NC = 0)
Nov 25 08:21:43 SWE1210 user.warn kernel: Node Added (NC = 1)

```

| System Log | |
|------------|-----------------|
| Refresh | Update the log. |
| Clear | Clear the log. |

5 System

5.1 Operation Mode

Each operating mode offers different features. In order to switch the operating mode, select it from the **Operation Mode** from the **System**. There are three operation modes: **Access Point**, **WDS AP**, and **WDS Bridge**.

- **Access Point:** Allow devices to connect to the SWE1210 through a simple wireless connection.
- **WDS Access Point (Wireless Distribution Systems Access Point):** Interconnect access points to allow wireless communication wireless devices and access points among them.
- **WDS Bridge (Wireless Distribution Systems Bridge):** Interconnect access points to allow communication between access points only.

System Properties

| | |
|----------------|--|
| Device Name | SWE1210 (1 to 32 characters) |
| Country/Region | Please Select a Country Code ▼ |
| Operation Mode | <input type="radio"/> Access Point <input checked="" type="radio"/> WDS <input type="radio"/> Access Point <input type="radio"/> Bridge |

Accept Cancel

| System Properties | |
|--------------------------|---|
| Device Name | Enter a name for the device. The name you type appears in SNMP management. This name is not the SSID and is not broadcast to other devices. |
| Country/Region | Select a Country/Region to conform to local regulations. |
| Operation Mode | Use the radio button to select an operating mode. |
| Accept / Cancel | Click [Accept] to confirm the changes or [Cancel] to cancel and return previous settings. |

5.2 IP Settings

This page allows you to modify the device's IP settings.

IP Settings

[Home](#)
[Reset](#)

System Information

| | |
|--------------------|---|
| IP Network Setting | <input type="radio"/> Obtain an IP address automatically (DHCP) <input checked="" type="radio"/> Specify an IP address |
| IP Address | 192 . 168 . 1 . 1 |
| IP Subnet Mask | 255 . 255 . 255 . 0 |
| Default Gateway | 192 . 168 . 1 . 1 |
| Primary DNS | 0 . 0 . 0 . 0 |
| Secondary DNS | 0 . 0 . 0 . 0 |

[Accept](#)
[Cancel](#)

| IP Settings | |
|--------------------------------|--|
| IP Network Setting | Select whether the device IP address will use static IP address specified in the IP Address field, or be obtained automatically when the device connects to a DHCP server. |
| IP Address | The IP Address of this device. |
| IP Subnet Mask | The IP Subnet Mask of this device. |
| Default Gateway | The Default Gateway of this device. Leave it blank if you are unsure of this setting. |
| Primary / Secondary DNS | The primary / secondary DNS address for this device. |

5.3 Spanning Tree Setting

This page allows you to modify the Spanning Tree settings. Enabling Spanning Tree protocol will prevent network loops in your LAN network.

Spanning Tree Settings

[Home](#)
[Reset](#)

| | |
|----------------------|---|
| Spanning Tree Status | <input type="radio"/> On <input checked="" type="radio"/> Off |
| Bridge Hello Time | <input type="text" value="2"/> seconds (1-10) |
| Bridge Max Age | <input type="text" value="20"/> seconds (6-40) |
| Bridge Forward Delay | <input type="text" value="4"/> seconds (4-30) |
| Priority | <input type="text" value="32768"/> (0-65535) |

[Accept](#)
[Cancel](#)

| Spanning Tree | |
|-----------------------------|---|
| Spanning Tree Status | Enable or disable the Spanning Tree function. |
| Bridge Hello Time | Specify Bridge Hello Time in seconds. This value determines how often SWE1210 sends hello packets and communicate information about the topology throughout the entire Bridged Local Area Network. |
| Bridge Max Age | Specify Bridge Max Age in seconds. If another bridge in the spanning tree does not send a hello packet for a long period of time, it is assumed to be dead. |
| Bridge Forward Delay | Specify Bridge Forward Delay in seconds. Forwarding Delay time is the time spent in each of the Listening and Learning states prior the Forwarding state was entered. This delay is provided so that when a new bridge comes on to a busy network, it looks at traffic info before participating. |

| | |
|------------------------|---|
| Priority | Specify the Priority number. Smaller number has greater priority. |
| Accept / Cancel | Click [Accept] to confirm the changes or [Cancel] to cancel and return previous settings. |

6 Wireless

6.1 Wireless Network

This page displays the current status of the device's wireless configurations.

Wireless Network

[Home](#)
[Reset](#)

| | |
|---------------------|---|
| Wireless Mode | 802.11 B/G/N Mixed ▾ |
| Channel HT Mode | 20/40MHz ▾ |
| Extension Channel | Lower Channel ▾ |
| Channel / Frequency | Ch5-2.432GHz ▾ <input checked="" type="checkbox"/> Auto |
| AP Detection | <input type="button" value="Scan"/> |

Current Profiles

| SSID | Security | Isolation | L2 Isolation | VID | Enable | Edit |
|---------------------|----------|--------------------------|--------------------------|-----|-------------------------------------|-------------------------------------|
| Siselectron000006 | None | <input type="checkbox"/> | <input type="checkbox"/> | 1 | <input checked="" type="checkbox"/> | <input type="button" value="Edit"/> |
| Siselectron000006_2 | None | <input type="checkbox"/> | <input type="checkbox"/> | 2 | <input type="checkbox"/> | <input type="button" value="Edit"/> |
| Siselectron000006_3 | None | <input type="checkbox"/> | <input type="checkbox"/> | 3 | <input type="checkbox"/> | <input type="button" value="Edit"/> |
| Siselectron000006_4 | None | <input type="checkbox"/> | <input type="checkbox"/> | 4 | <input type="checkbox"/> | <input type="button" value="Edit"/> |
| Siselectron000006_5 | None | <input type="checkbox"/> | <input type="checkbox"/> | 5 | <input type="checkbox"/> | <input type="button" value="Edit"/> |
| Siselectron000006_6 | None | <input type="checkbox"/> | <input type="checkbox"/> | 6 | <input type="checkbox"/> | <input type="button" value="Edit"/> |
| Siselectron000006_7 | None | <input type="checkbox"/> | <input type="checkbox"/> | 7 | <input type="checkbox"/> | <input type="button" value="Edit"/> |
| Siselectron000006_8 | None | <input type="checkbox"/> | <input type="checkbox"/> | 8 | <input type="checkbox"/> | <input type="button" value="Edit"/> |

| Wireless Network | |
|----------------------------|--|
| Wireless Mode | Wireless mode supports 802.11b/g/n mixed mode. |
| Channel HT Mode | The default channel bandwidth is 20/40MHz. The larger the channel, the better the transmission quality and speed. |
| Extension Channel | Select upper or lower channel. Your selection may affect the Auto channel function. |
| Channel / Frequency | Select the channel and frequency appropriate for your country's regulation. |
| Auto | Check this option to enable auto-channel selection. |
| AP Detection | AP Detection scans nearby wireless access point, and allows you to select the best channel. |
| Current Profile | It allows you to configure up to four different SSIDs. Click [Edit] to configure the profile and check whether you want to enable extra SSID. |
| Profile Isolation | By selecting this radio button, you can set up restriction for clients communicating with different VID. |
| Accept / Cancel | Click [Accept] to confirm the changes or [Cancel] to cancel and return to previous settings. |

SSID Profile

SSID Profile

Wireless Setting

| | | |
|--------------------|---|----------------------|
| SSID | Siselectron000006 | (1 to 32 characters) |
| VLAN ID | 1 | (1-4094) |
| Suppressed SSID | <input type="checkbox"/> | |
| Station Separation | <input type="radio"/> Enable <input checked="" type="radio"/> Disable | |

Wireless Security

| | |
|---------------|------------|
| Security Mode | Disabled ▼ |
|---------------|------------|

| SSID Profile | |
|---------------------------|--|
| SSID | Specify the SSID for current profile. |
| VLAN ID | Specify the VLAN tag for the current profile. |
| Suppressed SSID | Allow you to hide the SSID from clients. If checked, the SSID will not appear in the site survey. |
| Station Separation | Allow or prevent communication between client devices. |
| Wireless Security | See the Wireless Security section. |
| Save / Cancel | Click [Save] to accept the changes or [Cancel] to cancel and return previous settings. |

6.2 Wireless Security

The Wireless Security section allows you to configure the SWE1210's security modes: WEP, WPA-PSK, WPA2-PSK, WPA-PSK Mixed, WPA, WPA2, and WPA Mixed. We strongly recommend you use WPA2-PSK.

Note: Only in Access Point and WDS AP mode.

WEP Encryption:

Wireless Security

| | |
|---------------|---|
| Security Mode | WEP ▾ |
| Auth Type | Open System ▾ |
| Input Type | Hex ▾ |
| Key Length | 40/64-bit (10 hex digits or 5 ASCII char) ▾ |

| | |
|-------------|------------|
| Default Key | 1 ▾ |
| Key1 | 1234567890 |
| Key2 | |
| Key3 | |
| Key4 | |

| WEP Encryption | |
|----------------------------|---|
| Authentication Type | Please ensure that your wireless clients use the same authentication type. |
| Key type | ASCII: Using characters from the ASCII standard (recommended) HEX: Uses hexadecimal characters. |
| Key Length | The amount of bits the WEP key will use. <ul style="list-style-type: none"> 64 Bit - data is encrypted, using the default key, before being transmitted. You must enter at least the default key. For 64 Bit Encryption, the key size is 10 chars in HEX (0~9 and A~F). |

| | |
|-------------------------|--|
| | <ul style="list-style-type: none">• 128 Bit - data is encrypted, using the default key, before being transmitted. You must enter at least the default key. For 128 Bit Encryption, the key size is 26 chars in HEX (0~9 and A~F). |
| Default Key | Select the key you wish to be the default. Transmitted data is ALWAYS encrypted using the Default Key; the other Keys are for decryption only. You must enter a Key Value for the Default Key . |
| Encryption Key # | Enter the key value or values you wish to use. Only the Key selected as Default is required. The others are optional. |

WPA-PSK (WPA Pre-Shared Key) Encryption:

Wireless Security

| | |
|---------------------------|---|
| Security Mode | WPA-PSK Mixed ▾ |
| Encryption | Both(TKIP+AES) ▾ |
| Passphrase | 12345678 (8 to 63 characters) or (64 Hexadecimal characters) |
| Group Key Update Interval | 3600 seconds(30~3600, 0: disabled) |

| WPA Pre-Shared Key Encryption | |
|-------------------------------|---|
| WPA type | Select the WPA encryption you would like. Please ensure that your wireless clients use the same settings. <ul style="list-style-type: none"> • TKIP: Uses a Pre-Shared Key with a dynamically generated key for each 128-bit packet. • AES: Government standard of WPA2 encryption. • Both (TKIP+AES): Allows the use of both WPA and WPA2 clients on the network. |
| Pre-shared Key Type | Pre-Shared Key format (ASCII or Hexadecimal). |
| Pre-shared Key | Wireless clients must use the same key to associate the device to the SWE1210. If using passphrase format, the Key must be from 8 to 63 characters in length. |

WPA Encryption:

Wireless Security

| | |
|---------------------------|------------------------------------|
| Security Mode | WPA Mixed |
| Encryption | Both(TKIP+AES) |
| Radius Server | |
| Radius Port | 1812 |
| Radius Secret | |
| Group Key Update Interval | 3600 seconds(30~3600, 0: disabled) |

| WPA RADIUS Encryption | |
|----------------------------------|---|
| WPA type | <p>Select the WPA encryption you would like. Please ensure that your wireless clients use the same settings.</p> <ul style="list-style-type: none"> • TKIP: Uses a Pre-Shared Key with a dynamically generated key for each 128-bit packet. • AES: Government standard of WPA2 encryption. • Both (TKIP+AES): Allows the use of both WPA and WPA2 clients on the network. |
| RADIUS Server | Enter the IP address of the RADIUS Server. |
| RADIUS Server Port | Enter the port number used for connections to the RADIUS server. |
| RADIUS Secret | Enter the password required to connect to the RADIUS server. |
| Group Key Update Interval | Specify how often, in seconds, the group key changes. |

Note: 802.11n does not allow WEP/WPA-PSK TKIP/WPA2-PSK TKIP security mode. The connection mode will change from 802.11n to 802.11g.

6.3 Wireless MAC Filter

Wireless MAC Filters are used to allow or deny network access to wireless clients according to their MAC addresses. You can manually add a MAC address to grant the permission to access SWE1210. The default setting is Disable Wireless MAC Filter.

Note: Only in Access Point and WDS AP mode.

Wireless MAC Filter
Home Reset

ACL Mode Disabled ▼

:
 :
 :
 :
 :

| # | MAC Address | |
|---|-------------------|---------------------------------------|
| 1 | 00:02:6F:00:35:04 | <input type="button" value="Delete"/> |

| Wireless Filter (Access Point / WDS AP mode) | |
|---|--|
| ACL Mode | Determines whether network access is granted or denied to clients whose MAC addresses appear in the MAC Address table on this page. Choices are Disable , Deny MAC in the list , or Allow MAC in the list . |
| MAC Address | Enter the MAC address of the wireless client. |
| Add | Click Add to add the MAC address to the MAC Address table. |
| Delete | Delete the selected entries. |
| Apply | Click "Apply" to apply the changes. |

6.4 Wireless Advanced

This page displays the advanced wireless options of the SWE1210.

It is recommended that the SWE1210's default settings are used unless the user has experience with advanced networking.

Wireless Advanced Settings

[Home](#)
[Reset](#)

| | |
|------------------------------|---|
| Data Rate | Auto ▾ |
| Transmit Power | 17 dBm ▾ |
| RTS/CTS Threshold (1 - 2346) | 2346 bytes |
| Distance (1-30km) | 1 km |
| Short GI: | Enable ▾ |
| Aggregation: | <input checked="" type="radio"/> Enable <input type="radio"/> Disable 32 Frames 50000 Bytes(Max) |

Wireless Traffic Shaping

| | |
|------------------------|---|
| Enable Traffic Shaping | <input type="radio"/> Enable <input checked="" type="radio"/> Disable |
| Incoming Traffic Limit | 1000 kbit/s |
| Outgoing Traffic Limit | 2000 kbit/s |

[Accept](#)
[Cancel](#)

| Wireless Advanced | |
|---------------------------------|--|
| Data Rate | Select a data rate from the drop-down list. The data rate affects throughput. If you select a low data rate value, the throughput is reduced but the transmission distance increased. |
| Transmit Power | Set desired output power of the wireless signal. |
| RTS/CTS Threshold | Specify the threshold package size for RTC/CTS. A smaller number causes RTS/CTS packets to be sent more often and consumes more bandwidth. |
| Distance | Specify the distance between Access Points and clients. Longer distances may reduce high-speed connections. |
| Short GI | Sets the time that the receiver waits for RF reflections to settle out before sampling data. Using a short (400ns) guard interval can increase throughput, but it can also increase error rate in some installations due to increased sensitivity to radio-frequency reflections. Select the option that works best for your installation. |
| Aggregation | Merges data packets into one packet. This option reduces the number of packets, but increases packet sizes. |
| Wireless Traffic Shaping | Check this option to enable wireless traffic shaping. Traffic shaping regulates the flow of packets leaving an interface to deliver improved Quality of Service. |
| Incoming Traffic Limit | Specify the wireless transmission speed used for downloading. |
| Outgoing Traffic Limit | Specify the wireless transmission speed used for uploading. |
| Accept / Cancel | Click [Accept] to confirm the changes or [Cancel] to cancel and return previous settings. |

6.5 WPS (Wi-Fi Protected Setup)

WPS feature follows the Wi-Fi Alliance WPS standard and it eases the setup of security-enabled Wi-Fi networks in home and/or small office environments.

It reduces the user steps required to configure a network and supports two methods that are familiar to most consumers to configure a network and enable security.

Note: Only in Access Point and WDS AP mode.

| WPS | |
|---------------------|---|
| WPS | <input type="radio"/> Enable <input checked="" type="radio"/> Disable |
| WPS current status | Configured <input type="button" value="Release Configuration"/> |
| Self Pin Code | 31580700 |
| SSID | Siselectron000006 |
| Authentication Mode | None |
| Passphrase Key | |
| WPS Via Push Button | <input type="button" value="Start to Process"/> |
| WPS Via Pin | <input type="text"/> <input type="button" value="Start to Process"/> |

| Wi-Fi Protected Setup (WPS) | |
|------------------------------------|--|
| WPS | Check to Enable or Disable the WPS feature. |
| WPS Current Status | Shows whether the WPS function is Configured or Un-Configured . Configured means that WPS has been used to authorize connection between the device and wireless clients. |
| Self Pin Code | The PIN code of this device. |
| SSID | The SSID (wireless network name) used when connecting using WPS. |
| Authentication Mode | Shows the encryption method used by the WPS process. This is set as the mode selected in the Security option in the Wireless menu. |
| Passphrase Key | This is the passphrase key that is randomly generated during the WPS process. It is required if wireless clients that do not support WPS attempts to connect to the wireless network. |
| WPS Via Push Button | Activate WPS using a push button. |
| WPS Via PIN | Activate WPS using the PIN code from the WPS device. |

6.6 WDS Link Settings

Using WDS (Wireless Distribution System) to connect Access Point wirelessly extends a wired infrastructure to locations where cabling is not possible or inefficient to implement.

Note: Compatibility between different brands and models of Access Point is not guaranteed. It is recommended that the WDS network be created using the same Access Point models for maximum compatibility.

Also, all Access Points in the WDS network needs to use the same Channel and Security settings.

To create a WDS network, please enter the MAC addresses of the Access Point that you want included in the WDS. There can be a maximum of four access points.

Note: Only in WDS AP and WDS Bridge mode.

WDS Link Settings

[Home](#)
[Reset](#)

Caution: NAWDS was enabled, you need assign Wifi Channel manually later.

| ID | MAC Address | Mode |
|----|-----------------------------|-----------|
| 1 | 00 : 02 : 6F : 11 : 22 : 33 | Enable ▾ |
| 2 | : : : : : : | Disable ▾ |
| 3 | : : : : : : | Disable ▾ |
| 4 | : : : : : : | Disable ▾ |

[Accept](#)
[Cancel](#)

| WDS Link Settings | |
|--------------------------|--|
| MAC Address | Enter the Access Point's MAC address to which you want to extend the wireless area. |
| Mode | Select Disable or Enable from the drop-down list. |
| Accept / Cancel | Click [Accept] to confirm the changes or [Cancel] to cancel and return to previous settings. |

7 Management

7.1 Administration

This page allows you to change the SWE1210 default password. By default, the user name is **admin** and the password is: **admin**. Password can contain 0 to 12 alphanumeric characters and is case sensitive.

Login Setting

| | |
|------------------|-------|
| Name | admin |
| Password | |
| Confirm Password | |

| Change Password | |
|----------------------------|--|
| Name | Enter a new username for logging in to SWE1210 web user interface. |
| Password | Enter a new password for logging in to SWE1210 web user interface. |
| Confirm Password | Re-enter the new password for confirmation. |
| Save/Apply / Cancel | Click Save/Apply to apply the changes or Cancel to return previous settings. |

7.2 Management VLAN

This page allows you to assign a VLAN tag to the packets. A VLAN is a group of computers on a network whose software has been configured so that they behave as if they were on a separate Local Area Network (LAN), regardless of their physical location.

Management VLAN Settings

[Home](#)
[Reset](#)

Caution: If you reconfigure the Management VLAN ID, you may lose connectivity to the access point. Verify that the switch and DHCP server can support the reconfigured VLAN ID, and then re-connect to the new IP address.

| | |
|--------------------|---|
| Management VLAN ID | <input checked="" type="radio"/> No VLAN tag <input type="radio"/> Specified VLAN ID <input type="text"/> (must be in the range 1 ~ 4094.) |
|--------------------|---|

[Accept](#) [Cancel](#)

| Management VLAN | |
|---------------------------|---|
| Management VLAN ID | Enter the VLAN ID if your network includes VLANs and if tagged packets need to pass through the Access Point. Otherwise, click No VLAN tag . |
| Accept / Cancel | Click Accept to confirm the changes or Cancel to cancel and return to previous settings. |

Note:

1. If you reconfigure the Management VLAN ID, you may lose your connection to the SWE1210. Verify that the DHCP server supports reconfigured VLAN ID, and then reconnect to the SWE1210 using the new IP address.
2. Clicking **Accept** does not apply the changes. To apply them, use Status > Save/Reload (see section 4.1).

7.3 SNMP

The **SNMP** section of the **Management** menu allows you to assign the contact details, location, community name, and trap settings for the Simple Network Management Protocol (SNMP). The SNMP is a networking management protocol used to monitor network-attached devices. SNMP allows messages (called protocol data units) to be sent to various parts of a network. Upon receiving these messages, SNMP-compatible devices (Agents) return data stored in their Management Information Bases.

SNMP Settings

[Home](#)
[Reset](#)

| | |
|---------------------------------|---|
| SNMP | <input checked="" type="radio"/> Enable <input type="radio"/> Disable |
| Contact | <input type="text"/> |
| Location | <input type="text"/> |
| Community Name (Read Only) | public |
| Community Name (Read/Write) | private |
| Trap Destination Address | <input type="text"/> |
| Trap Destination Community Name | <input type="text"/> |

[Save/Apply](#)
[Cancel](#)

| SNMP | |
|-----------------------------------|--|
| SNMP Enable/Disable | Enable or disable SNMP feature. |
| Contact | Specify the contact details of the device |
| Location | Specify the location of the device. |
| Community Name (Read Only) | Specify the password for access the SNMP community for read only access. |

| | |
|--|---|
| Community Name (Read/Write) | Specify the password for access to the SNMP community with read/write access. |
| Trap | |
| Trap Destination Address | Specify the IP address of the computer that will receive the SNMP traps. |
| Trap Destination Community Name | Specify the password for the SNMP trap community. |

7.4 Backup/Restore

This page allows you to save the current SWE1210 configurations. Once you saved the configurations, you can also re-load the saved configurations into the device through the **[Restore Saved Settings from A File]**. You may also use the **[Revert to Factory Default Settings]** to set all configurations to its original default settings.

Backup/Restore Settings
Home
Reset

Save A Copy of Current Settings

Restore Saved Settings from A File

Revert to Factory Default Settings

| Backup/Restore | |
|---|--|
| Save A Copy of Current Settings | Click [Backup] to save current configured settings. |
| Restore Saved Settings from A File | To restore to previously saved settings, click [Browse] , select the file, and click [Restore] . |
| Revert to Factory Default Settings | Click [Factory Default] button to restore the SWE1210 to its factory default settings. |

7.5 Firmware Upgrade

This page allows you to upgrade the device's firmware.

Firmware Upgrade

[Home](#)[Reset](#)

Current firmware version: 1.0.3

Locate and select the upgrade file from your hard disk:

To perform the Firmware Upgrade:

1. Download the firmware version that you want to install into the SWE1210 and place it in a known location.
2. Click the [**Browse**] button and navigate to the location of the firmware upgrade file.
3. Select the upgrade file. Its name will appear in the **Upgrade File** field.
4. Click the [**Upload**] button to commence the firmware upgrade.

Note: The device is unavailable during the upgrade process, and must restart when the upgrade is completed. Any connections to or through the device will be lost.

7.6 Time Setting

This page allows you to set the system time.

Time Settings

[Home](#)
[Reset](#)

Time

Manually Set Date and Time

2011 / 06 / 27 13 : 26

Automatically Get Date and Time

Time Zone: UTC+00:00 Gambia, Liberia, Morocco

User defined NTP Server: 209.81.9.7

[Save/Apply](#)
[Cancel](#)

| Time | |
|--|---|
| Manually Set Date and Time | Manually specify the date and time. |
| Automatically Get Date and Time | Select a time zone from the drop-down list and check whether you want to enter the NTP server IP address or use the default NTP server. |

7.7 Log

This page allows you to setup Syslog and local log functions.

Home
Reset

Log

Syslog

| | |
|-----------------------|---|
| Syslog | Disable ▾ |
| Log Server IP Address | <input type="text"/> . <input type="text"/> . <input type="text"/> . <input type="text"/> |

Local log

| | |
|-----------|----------|
| Local Log | Enable ▾ |
|-----------|----------|

Save/Apply
Cancel

| Log | |
|------------------------------|---|
| Syslog | Enable or disable the syslog function. |
| Log Server IP Address | Enter IP address of the log server. |
| Local Log | Enable or disable the local log service. |
| Save/Apply / Cancel | Click Save/Apply to apply the changes or Cancel to return to previous settings. |

7.8 Diagnosis

This page allows you to ascertain connection quality and trace the routing table to the target.

Diagnostics

[Home](#)
[Reset](#)

Ping Test Parameters

| | |
|---|----------------------|
| Target IP | <input type="text"/> |
| Ping Packet Size | 64 Bytes |
| Number of Pings | 4 |
| <input type="button" value="Start Ping"/> | |

Traceroute Test Parameters

| | |
|---|----------------------|
| Traceroute target | <input type="text"/> |
| <input type="button" value="Start Traceroute"/> | |

| Diagnosis | |
|--------------------------|---|
| Target IP | Enter the IP address you would like to search. |
| Ping Packet Size | Enter the packet size of each ping. |
| Number of Pings | Enter the number of times you want to ping. |
| Start Ping | Click [Start Ping] to begin pinging. |
| Traceroute Target | Enter an IP address or domain name you want to trace. |
| Start Traceroute | Click [Start Traceroute] to begin the trace route operation. |

7.9 LED Control

This page allows you to control LED on/off for Power, LAN interface and WLAN interface.

LED Control

[Home](#)[Reset](#)

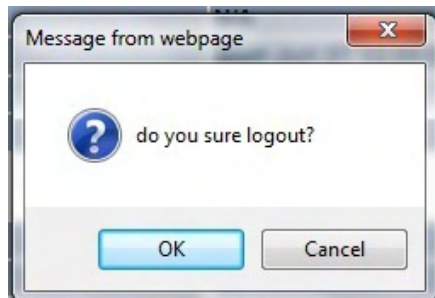
LED Control

| | |
|-----------|---|
| Power LED | <input checked="" type="radio"/> ON <input type="radio"/> OFF |
| LAN LED | <input checked="" type="radio"/> ON <input type="radio"/> OFF |
| WLAN LED | <input checked="" type="radio"/> ON <input type="radio"/> OFF |

[Save/Apply](#)[Cancel](#)

7.10 Logout

Click [**Logout**] in **Management** menu to logout.



7.11 Reset

In some circumstances it may be required to reboot the device. Click on [**Reboot the Device**] to reboot.

Reset

[Home](#)[Reset](#)

The System Settings section allows you to reboot the device, or restore the device to the factory default settings. Restoring the unit to the factory default settings will erase all settings, including any rules you have created.

System Commands

[Reboot the Device](#)[Restore to Factory Defaults](#)

8 Building a Wireless Network

With its ability to operate in various operating modes, your SWE1210 is the ideal device for building your WLAN. This appendix describes how to build a WLAN around your SWE1210 using the device's operation modes.

8.1 Access Point Mode

In Access Point Mode, SWE1210 behaves like a central connection for stations or clients that support IEEE 802.11b/g/n networks. Stations and client must be configured to use the same SSID and security password to associate with the SWE1210. The SWE1210 supports four SSIDs at the same time for secure guest access.



8.2 Access Point Mode with WDS Function (WDS AP mode)

The SWE1210 also supports WDS AP mode. This operation mode allows wireless connections to the SWE1210 by using WDS technology. In this mode, configure the MAC addresses in both Access Points to extend the wireless coverage area by enabling WDS Link settings. WDS supports up to four AP MAC addresses.



8.3 WDS Bridge Mode

In WDS Bridge Mode, the SWE1210 can wirelessly connect to different LANs by configuring the MAC address and security settings of each SWE1210 device. Use this mode when two wired LANs located in a short distance apart and want to communicate with each other. The best solution is to use the SWE1210 to wirelessly connect two wired LANs, as shown in the following figure.

WDS Bridge Mode can establish up to four WDS links, creating a star-like network.



Note: WDS Bridge Mode is different than Access Point mode. Access Points linked by WDS mode are using the same frequency channel. By having more access point connected together, it may lower throughput. Please be aware to avoid loop in your wireless connection, otherwise enable Spanning Tree function.

FCC Interference Statement

This device complies with Part 15 of the FCC Rules. Operation is subject to the following two conditions: (1) This device may not cause harmful interference, and (2) this device must accept any interference received, including interference that may cause undesired operation.

This equipment has been tested and found to comply with the limits for a Class B digital device, pursuant to Part 15 of the FCC Rules. These limits are designed to provide reasonable protection against harmful interference in a residential installation. This equipment generates, uses and can radiate radio frequency energy and, if not installed and used in accordance with the instructions, may cause harmful interference to radio communications. However, there is no guarantee that interference will not occur in a particular installation. If this equipment does cause harmful interference to radio or television reception, which can be determined by turning the equipment off and on, the user is encouraged to try to correct the interference by one of the following measures:

- Reorient or relocate the receiving antenna.
- Increase the separation between the equipment and receiver.
- Connect the equipment into an outlet on a circuit different from that to which the receiver is connected.
- Consult the dealer or an experienced radio/TV technician for help.

FCC Caution: Any changes or modifications not expressly approved by the party responsible for compliance could void the user's authority to operate this equipment.

This transmitter must not be co-located or operating in conjunction with any other antenna or transmitter.

Radiation Exposure Statement:

This equipment complies with FCC radiation exposure limits set forth for an uncontrolled environment. This equipment should be installed and operated with minimum distance 20cm between the radiator & your body.

| | |
|------------|---|
| E s | ereby Ssee tr Te y td de arates t at t e SWE 2 20 s a e wt t e esse ta re re e tsa d t erree a ts r s s Dre t e1 E |
| Es a S a s | r ed de a rese te Ssee tr Te y td de ara ee SWE 2220 e sre st s ese aes y aes era tras ds s esa abes e bes de a dre t a1 E |