



ConnexLink

Wireless Programming System

User Guide

SIEMENS

1

Introduction

ConnexxLink is a wireless programming system for all hearing instruments equipped with e2e wireless 2.0. Place ConnexxLink around your patient's neck and wirelessly connect your patient's hearing instruments to the programming software on the PC. No programming cables are necessary.

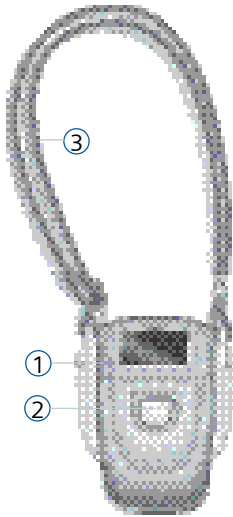
Follow these instructions to set up ConnexxLink and to understand how ConnexxLink works.

For instructions on programming a hearing instrument please refer to the specific Fitting Guide.

3	ConnexxLink wireless programming system	4
4	Intended use	5
5	General notes on safety	6
6	Safety notes for batteries	8
7	Handling the rechargeable battery	9
	- Before first use	
	- Charging the wireless programming system	
	- Running time of the rechargeable battery	
8	Working with the wireless programming system	10
	- Before first use	
	- Bluetooth dongle	
	- Wearing the wireless programming system	
	- Connecting wireless programming system and Bluetooth dongle	
9	Screens and symbols	12
10	Maintenance and care	13
11	Technical information	14
12	Disposal information	16

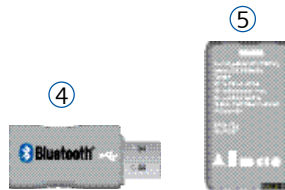
3

ConnexLink wireless programming system



Features

- ① ConnexLink
- ② On/Off button
- ③ Lanyard
- ④ USB Bluetooth Dongle
- ⑤ Rechargeable battery
- ⑥ Power supply and adapters






The ConnexxLink wireless programming system is intended to program hearing instruments wirelessly.

Read and follow the instructions of this user guide to avoid injuries or damage to the wireless programming system.

Symbols:

Be aware of information marked with the warning symbol **WARNING**, **CAUTION** or **NOTICE**!

	WARNING points out a situation that could lead to serious injuries. CAUTION indicates a situation that could lead to minor and moderate injuries.
NOTICE	NOTICE indicates possible property damage.
	Advice and tips on how to handle your hearing instrument better.
	Instruction. Indicates that something has to be done.

⚠ CAUTION

The wireless programming system is a Bluetooth class 2 device. It may interfere with measuring devices and electronic equipment.

- ▶ Turn the wireless programming system off when in airplanes.
- ▶ Observe restrictions for the use in hospitals.
- ▶ Prior to use in conjunction with an electronic implant or life supporting system have the electromagnetic compatibility verified.


NOTICE

The wireless programming system is sensitive to extreme heat, high humidity, strong magnetic fields ($>0.1T$), X-rays and mechanical stress.

- ▶ Do not expose the wireless programming system to extreme temperature or high humidity.
- ▶ Do not leave it in direct sunlight.
- ▶ Do not immerse it in water.

i In some countries restrictions for the usage of wireless equipment exist.

- ▶ Refer to local authorities for further information.

 The function of the wireless link might be affected by a nearby electro-magnetic noise source, such as computer monitors.

- ▶ Please keep an appropriate distance from these sources.

 **WARNING**

Risk of interference with cardiac pacemakers.

- ▶ Do not use the wireless programming system if the patient is fitted with a cardiac pacemaker.

 **WARNING**

Risk in explosive environments, e.g. mining areas!

- ▶ Don't use the wireless programming system in areas where there is a danger of explosions.

 **WARNING**


Strangulation hazard when lanyard gets entangled in e.g. moving mechanical parts of machines.

- ▶ Use only the delivered breakaway lanyard. It will automatically snap when it gets entangled.

 **WARNING**

Risk of explosion when the rechargeable battery is handled incorrectly.

- ▶ Do not short circuit, pierce, crush or disassemble the rechargeable battery.
- ▶ Do not place in oven or fire.
- ▶ Do not immerse in water.
- ▶ Charge the rechargeable battery between 0°C and 45°C
- ▶ Remove the rechargeable battery when the instrument is not in use for a prolonged period of time.

- 
- ▶ Do not throw old rechargeable batteries into household trash.
 - ▶ Dispose of them according to national regulations.
 - ▶ To avoid short circuits cover the contacts of the rechargeable Li-ion batteries with tape.

 **WARNING**

Choking hazard posed by small parts.

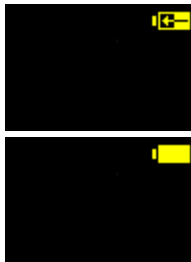
- ▶ Keep batteries, small parts and the wireless programming system out of children's reach.
- ▶ If swallowed consult a physician or hospital immediately.

Before first use

- ▶ Insert the rechargeable battery into the wireless programming system.
- ▶ Charge the rechargeable battery before first use.

Charging the wireless programming system

- ▶ Connect the wireless programming system with the power plug to a power supply. The charging process starts. Charging time is about 5 hours depending on the status of the rechargeable battery.



Charging is complete when the battery symbol shows a full battery.

- ii ▶ Keep an eye on the battery status when using the wireless programming system.
- ▶ Charge the wireless programming system when the battery is turning low.

Running time of the rechargeable battery

The running time of the rechargeable battery is about 6 to 7 hours.

- ▶ Use the wireless programming system during the day and charge it over night.

Before first use

- ▶ Make sure to have Connexx 6.0 or a higher version installed.
- ▶ Plug the Bluetooth dongle into a USB slot of your computer.



Bluetooth dongle

- Bluetooth dongle and wireless programming system need to be within a range of 10 m (32 ft).
- The green LED of the Bluetooth dongle blinks when the Bluetooth dongle is searching for a connection to the wireless programming system.
- The green LED of the Bluetooth dongle is constantly lit when a connection to the wireless programming system is established.

Wearing the wireless programming system



The patient wears the hearing instruments while the hearing instruments are programmed.

- ▶ Use the lanyard to put the wireless programming system around the patients neck. This way the wireless programming system has a distance up to 25 cm (10 in) to the hearing instruments.
- ▶ The patient should maintain a forward facing head position, same direction as the wireless programming system. Turning the head can lead to a disconnection during the programming process.

- ii ▶ When the hearing instruments and the wireless programming system are lying on the table, do not exceed a distance of 5 cm (2 in) between hearing instruments and wireless programming system.

Connecting wireless programming system and Bluetooth dongle

- ▶ Turn the wireless programming system on by pressing the On/Off button. When the Bluetooth symbol on the screen of the wireless programming system stops blinking, the Bluetooth dongle and the wireless programming system are connected.



- ii The wireless programming system will go into stand-by mode after 15 min of inactivity.
 - ▶ Turn the wireless programming system back on by pressing the On/Off button.

- ▶ Start the Connexx detection dialog via the button "Detect connected instruments" in the toolbar or on the hearing instrument's task card.
- ▶ Choose the wireless programming system as the detection device.
- ▶ Follow the steps in Connexx to detect and program the hearing instruments.



Bluetooth

- When the Bluetooth symbol blinks, the wireless programming system is connecting to the Bluetooth dongle.
- When the Bluetooth symbol is constantly showing, the wireless programming system is connected to the Bluetooth dongle.



full



empty

Battery status

- ▶ Charge the wireless programming system when the battery is turning low.



charging



full

Charging information



Device ready



Ready for data transfer



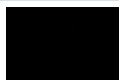
Data transfer error

- shown for a few seconds, then switches back to "Ready for data transfer".



Data transfer ok

- shown for a few seconds, then switches back to "Ready for data transfer".



- while data is transferred no symbols are shown on the screen.

- ▶ Clean the wireless programming system as necessary with a soft tissue.
- ▶ Avoid abrasive cleaning liquids with additives such as citronid aids, ammonia, etc.

NOTICE

- ▶ Do NOT put the wireless programming system in water!
- ▶ Do NOT clean the wireless programming system with alcohol or benzine.



Operating frequencies: $F_c=3.28$ MHz

Max. field strength @ 10m: -24.1 dB μ A/m

Max. field strength @ 30m: -6.2 dB μ V/m

CE, FCC and IC compliance information can be found inside the battery compartment.

This Class B digital apparatus complies with Canadian ICES-003.

Changes or modifications not expressly approved by the party responsible for compliance could void the users authority to operate the equipment.

Siemens ConnexxLink wireless programming system

FCC: SGI-WL200AP

IC: 267AB-WL200AP

This device complies with Part 15 of the FCC Rules and with RSS-210 of Industry Canada.

Operation is subject to the following conditions:

- (1) this device may not cause harmful interference, and
- (2) this device must accept any interference received, including interference that may cause undesired operation.

This equipment has been tested and found to comply with the limits for a Class B digital device, pursuant to Part 15 of the FCC Rules. These limits are designed to provide reasonable protection against harmful interference in a residential installation. This equipment generates, uses and can radiate radio frequency energy and, if not installed and used in accordance with the instructions, may cause harmful interference to radio communications. However, there is no guarantee that interference will not occur in a particular installation. If this equipment does cause harmful interference to radio or television reception, which can be determined by turning the equipment off and on, the user is encouraged to try to correct the interference by one or more of the following measures:

- Reorient or relocate the receiving antenna.
- Increase the separation between the equipment and receiver.
- Connect the equipment into an outlet on a circuit different from that to which the receiver is connected.
- Consult the dealer or an experienced radio/TV technician for help.

Within the European Union, the marked equipment is covered by "Directive 2002/96/EC of the European Parliament and of the Council of 27 January 2003 on waste electrical and electronic equipment".



Amended by "Directive 2003/108/EC" (WEEE).

i NOTE

Recycle your hearing instruments and batteries according to national regulations.

For disposal within the EU please send devices to the following address:

United Kingdom	Malta	Ireland
Siemens	Charles de Giorgio LTD	Howth Junction
Hearing Instruments	39-40 South Street	Business Center
Newton Road	Valetta CMR 01	Kilbarrack
Crawley RH109TT	P.O. Box 374	5 Dublin

www.hearing-siemens.com

With the CE marking Siemens confirms compliance with the European Directive 93/42/EEC concerning medical devices.



© Siemens AG, 04.2008
Document No. A91SAT-00459-99T1-7600
Order/Item No. 104 174 29
Printed in Germany

Siemens Audiologische Technik GmbH
Gebbertstrasse 125
91058 Erlangen
Germany
Phone +49 9131 308 0

www.siemens.com/hearing