



Toucan Surveillance Kit

# Camera & Smart Socket

**USER'S MANUAL**

*Model: TSK100KU*

[VuPoint]  
Solutions

# Table of Contents

---

1.	Key Features	2
2.	What is Included	5
3.	Positioning	8
4.	Toucan Installation	9
5.	Status LED Indicators	13
6.	Specifications	14
7.	Troubleshooting & FAQ	15
8.	Regulations & Compliance	16

# 1. Key Features

## Toucan Camera

Prevent a Break In, before it happens.



### Easy 3-Steps Installation

- DIY installation in minutes; no need to pull wires



### Wireless Connectivity

- Built-in WiFi® and Bluetooth® technology



### Wide Angle Adjustable Lens

- Clear HD LIVE video feed and event recording capture



### Passive Infrared Sensor

- Detects change in motion



### 2-way communication

- Built-in microphone and high-fidelity speaker for clear audio communication



### 100dB Siren Alarm

- Sound the alarm instantly to unwanted visitors



### Weatherproof Design

- Withstands rain, snow, humidity, and house maintenance year-round



# 1. Key Features

## Smart Socket

Easy to install the smart socket



### Adapt to lamp fixture

- Simply thread in E26 adapter between fixture and the bulb



### Remote Light Control

- Turn on and off the lights



### Mesh Network Connectivity

- Total security solution for entire home with **Bluetooth® technology**



### USB power adapter

- Provides power to camera



### Schedule dusk-to-dawn

- Timer feature to schedule light to turn on at dusk and off at dawn through cloud system



## Functions on the KUNA app

Free app to receive automatic notifications, view live video, and speak directly to those at your door.  
Captured footage up to 2 hours and stored in Cloud Server. Never miss a moment!

**Automatic Notifications**

**Live video indicator**

**100dB Siren Alarm**

- Sound the alarm instantly to unwanted visitors

**Play Message**

- Pre-recorded messages

**LIVE Camera**

**View Recorded Videos**

**Toucan Camera Name**

- Set up by user

**Date**

**Wide Angle LIVE view**

**Light control**

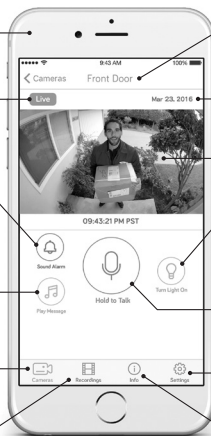
- Turn ON/OFF the lights

**Hold to talk**

- 2-way communication

**Camera setting**

**App and Contact Info**



\*User interface is subject to change without prior notice.

## 2. What is Included

Before installing Toucan, make sure all parts are present.  
If any part is missing, please contact VuPoint Solutions at [support@vupointsolutions.com](mailto:support@vupointsolutions.com).

### Mount Camera on Mount Plate



**Toucan Camera**  
• Mount camera under light fixture



**Smart Socket**  
• Thread in between light fixture and light bulb. USB port provides power to camera.



**Mount Plate Cover**  
• Fix the cable position



**Conduit Cover**  
• Fix the cable position



**Camera Mount Plate**  
• Fix the cable position on mount plate



**Positioning Sticker**  
• Indicator for camera's position on the wall during installation



**Conduit**  
• Manage the cable between the cable and light fixture with adjustable length



**Visor**  
• Anti-glare from light bulb

---

## Cable Management



### USB cable with Silicon pipe

- Connect camera to socket for power source. Silicon pipe protects USB cable when installing lamp shade on fixture.



### Cable Clips (3pcs)

- Manage the cable on light base plate

---

## Mount of Wall



### Mount Screws (2pcs)

- Wall mount purpose



### Washers (2pcs)

- Wall mount purpose



### Wall Inserts (2pcs)

- Wall mount purpose



### Hexagonal Wrench

- Lock and unlock the camera on mount plate

## 2. What is Included

---

### Manual and Labels



User's Manual



Warranty Card



**Power Sticker**  
• Stick on main power switch



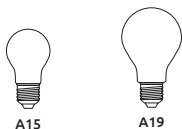
**Secure Stickers (3pcs)**  
• Alert intruder that home is secured by Toucan



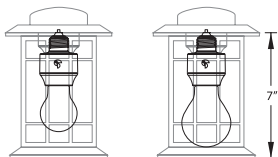
### 3. Positioning

Smart Socket is compatible to standard commonly known light bulbs A15 and A19 and can support up to 75W. If your lamp shade height is less than 7 inches, or if your light bulb protrudes from your light fixture after threading in Smart Socket and light bulb, please consider changing to a smaller light bulb.

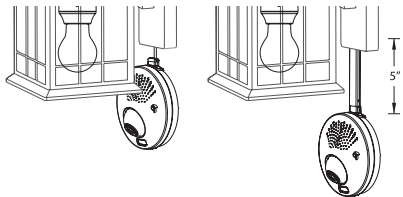
Lightbulb



Light fixture with socket



It is recommended to position the camera beneath the light fixture. If the camera is placed approx. 5" beneath the lamp base against the wall, please install the conduit to manage the cables.



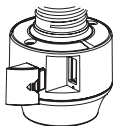
\*Placement recommendations may vary based on different light fixture's designs, style, and size.

## 4. Toucan Installation

Before installation, make sure the power switch is OFF or disconnect power at fuse.  
Refer to "What Is Included" in Section 2 for part installation for the steps below:

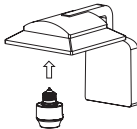
### STEP 1 Socket installation

1



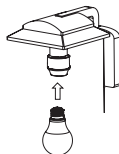
Remove USB cover. Before installing the socket into light fixture, disassemble the lamp shade if necessary.

2



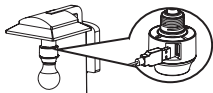
Install **Smart Socket** to fixture.

3



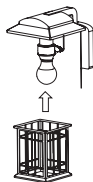
Thread in light bulb.

4



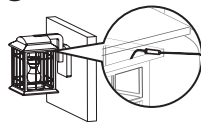
Attach **USB Cable** to **Smart Socket**.

5



Reattach lamp shade if necessary.

6



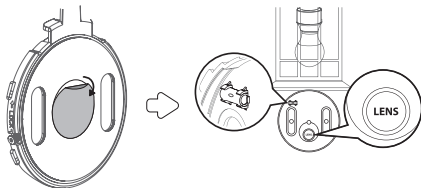
Screw lamp shade back in and drag out USB cable through the shade then adjust **Silicon Pipe** from USB cable to protect cable.



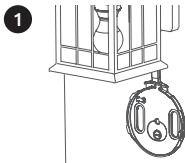
## STEP 2 Mounting the camera's back plate

Remove optional inner temporary adhesive for camera positioning and use leveler to align and balance back plate. You can use a pencil or Position Sticker (included) to mark placement before adhering to your wall.

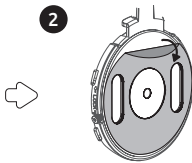
Refer to **Option 1** to mount camera to wall with adhesive or **Option 2** to mount camera to wall with screws.



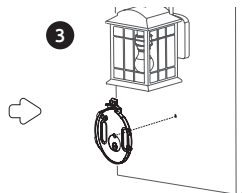
### OPTION 1 Mounting with adhesive



After using the **Leveler** to adjust the balance of the plate, adhere the **Positioning Sticker** to mark the center of the plate.



Remove and flip plate to remove outer adhesive from back plate for a more stable placement of the camera to the wall.



Align back plate with the **Positioning Sticker** on the wall to center the plate.

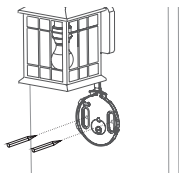
10

## 4. Toucan Installation

### STEP 2 Mounting the camera's back plate

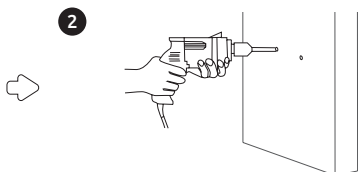
#### OPTION 2 Mounting with screws

1



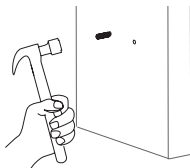
After using the **Leveler** to adjust the balance of the plate, you can use a pencil to mark the placement for the screws.

2



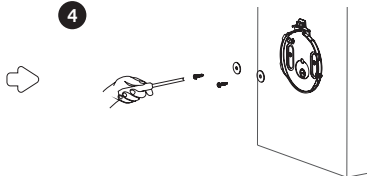
Drill holes for screws placement.

3



Install **Wall Inserts**.

4



Mount back plate with **Washers** and **Screws**.

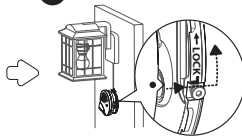
### STEP 3 Camera body installation

1



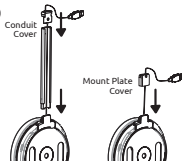
Plug **USB Cable** into the back of the camera and loop the cable around the rings; continue looping the cable if necessary.

2



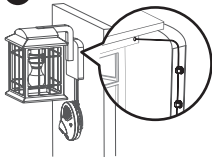
Mount the camera to the back plate and align the white dot to the left of the screw where the white arrow starts and rotate camera counter-clockwise to lock.

3



Manage the cable with optional **Conduit**. Then attach the **Cover** to the top of the conduit/mount plate.

4



Position camera and use **Cable Clips** to manage the cable if necessary.

5



Tighten the security screw with hexagonal wrench. **Do not over-tighten the security screw.**

6



Attach **Visor** to the top of the camera lens.

## 5. Status LED Indicators

---

In order to set up your Toucan, please make sure it's successfully installed, and the status LED on the bottom left side of your Toucan camera is flashing red. This means that your Toucan is ready to be set up!

LED STATUS	DESCRIPTION
Solid Red	Booting
Flashing Red	Waiting for Wi-Fi Connection
Flashing Yellow	Connected to Wi-Fi Waiting for connection to Kuna Servers
Solid Blue	Connected to Kuna Servers and operating normally
Solid Purple	Firmware updating triggered by user

## 6. Specifications

### Toucan Camera (Model: TC100KU)

Camera	HD 720p resolution
Video resolution	1280x720 at 30 fps. H.264
Field of View	116 degrees (diagonal)
Wi-Fi®	2.4GHz 802.11 b/g/n
Bluetooth®	Bluetooth® BLE 4.0
Siren Alarm	100 dB
Lighting Control	On/Off/Scheduling with app
Weatherproof Design	IP44
Dimensions (L×H×W)	4.6" x 4.6" x1.9"
Microphone:	Built-in
Speaker:	Built-in
Input Voltage:	DC:5V/1.0A
Compatibility:	iOS: 5 or above / Android : 4.3 or above
Operating temperature:	-40°F - 140°F

### Toucan Smart Socket (Model: TS100WU)

Lamp Base Type	Socket type E26
USB Output	DC5V, 1A
Input	AC120V, 60Hz
Lighting Control	On/Off/Scheduling through BLE Mesh Network
Bluetooth®	Bluetooth® BLE 4.0
Light bulb	Support maximum 75W standard bulb; recommended 10W LED light bulb; not included
Dimensions	2"(Dia.) x 3"



## 7. Troubleshooting & FAQ

---

**Note:** Model Number and Serial Number (S/N) is located on the packaging, instruction manual, or on the product. Please have this information ready before contacting tech support.

### Frequently Asked Questions

- |   |   |   |
|---|---|---|
| 1 | How long will my recordings be available?                               | All Toucan come standard with a two-hour download and “look back” window. With premium subscription plans, you can “go back in time” to access every event that your Toucan generated for up to 30 days.  |
| 2 | Do I have to leave my light switch on?                                  | Yes, Toucan uses power continuously, so you will have to leave the light switch on. We have provided with your Toucan a “Keep it On” label as reminder to leave the switch on.  |
| 3 | How many Toucan Cameras can I install at home?                          | There’s no limit. We recommend installing Toucan at all major entry points. You can add multiple camera to your Kuna app and manage each camera all in one app.   |
| 4 | Can I use LED bulb with Toucan?   | Yes, we recommend that you use an LED bulb.   |
| 5 | What is the maximum light bulb wattage I can use with the Smart Socket? | Smart Socket supports up to maximum 75W.  |
| 6 | I do not see any Toucan camera show up in setup screen?                 | Toucan uses Bluetooth® LE 4.0 for setup. You will need to be within about 10 feet of the Toucan and have Bluetooth enabled on your mobile device. Try rebooting your mobile device and launch the Kuna app again.   |
| 7 | My Toucan is “offline”?   | <ol style="list-style-type: none"><li>1) <b>Reboot your Toucan:</b> Turn off your Toucan (using the light switch it’s connected to) and wait at least 10 seconds. Then, turn on the light switch back on.</li><li>2) <b>Run through the set-up process:</b> Re-add the Toucan camera again.<br/>* may be caused by weak Wi-Fi signal. Improve performance by moving your router closer to your Toucan, or adding a Range Extender in between.</li></ol> |

**Note:** If you need to change the router or ownership of your Toucan, please contact Kuna Customer Service to reset the Toucan.






# 8. Regulations & Compliance

---

## SAFETY & OPERATIONS

USB power output max. up to 5W. Please adhere to the following safety instructions. Failure to follow the instructions outlined in the user's manual may lead to serious personal injury and possible property damage.

Use only the USB cable packaged with the product from Toucan. The Smart Socket and USB cable may become warm during normal use. Always allow adequate ventilation around the smart socket and USB cable and use care when handling. Unplug the device if any of the following conditions exist:

- the USB cable or Smart Socket has become frayed or damaged
  - the USB connector or Smart Socket is exposed to rain, liquid, or excessive moisture
  - the USB cable or Smart Socket has become damaged
  - you suspect the USB cable or Smart Socket needs service or repair
  - you want to clean the USB cable or Smart Socket
- 



## 8. Regulations & Compliance

---

### FCC STATEMENT

Warning: Changes or modifications to this unit not expressly approved by the party responsible for compliance could void the user's authority to operate the equipment.

NOTE: This equipment has been tested and found to comply with the limits for a Class B digital device, pursuant to Part 15 of the FCC Rules. These limits are designed to provide reasonable protection against harmful interference in a residential installation. This equipment generates, uses and can radiate radio frequency energy and, if not installed and used in accordance with the instructions, may cause harmful interference to radio communications.

However, there is no guarantee that interference will not occur in a particular installation. If this equipment does cause harmful interference to radio or television reception, which can be determined by turning the equipment off and on, the user is encouraged to try to correct the interference by one or more of the following measures:

- Reorient or relocate the receiving antenna.
- Increase the separation between the equipment and receiver.
- Connect the equipment into an outlet on a circuit different from that to which the receiver is connected.
- Consult the dealer or an experienced radio/TV technician for help.

This device complies with Part 15 of the FCC Rules. Operation is subject to the following two conditions:

- (1) This device may not cause harmful interference.
- (2) This device must accept any interference received, including interference that may cause undesired operation.

#### RF Exposure Statement

To maintain compliance with FCC's RF Exposure guidelines, This equipment should be installed and operated with minimum distance between 20cm the radiator your body. Use only the supplied antenna.





App Store<sup>SM</sup> is a service mark of Apple Inc. Google Play<sup>TM</sup> and Android<sup>TM</sup> are registered trademarks of Google Inc. Wi-Fi<sup>®</sup> is a registered trademark of the Wi-Fi<sup>®</sup> Alliance. Kuna is a registered trademark of Kuna Systems Corporation, Bluetooth<sup>®</sup> word mark and logo are registered trademarks owned by Bluetooth SIG, Inc. All trademarks are the property of their respective owner.

Camera FCC ID: 2ABT4TC100KU  
Socket FCC ID: 2ABT4TS100WU



U.S. Patent Pending

TSK100KU\_Manual\_16-0226





[www.toucan.solutions](http://www.toucan.solutions)

