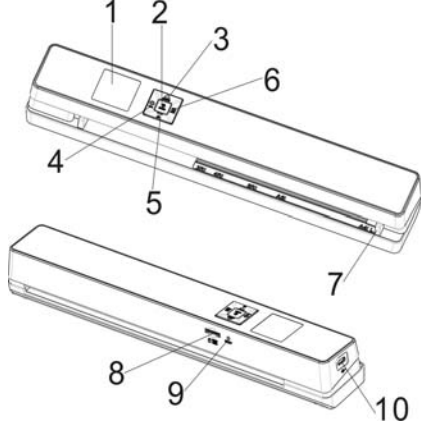


TSN48W User Manual

1. Key Features

- Scan automatically when feeding in a document.
- JPEG, PDF-A4 or PDF-Letter scan-format selection.
- Color or Mono scan-color selection.
- 300 (Lo) /600 (Mi) /1200 (Hi) DPI scan quality selection.
- Directly save JPG (JPEG)/PDF files to the microSD card.
- Support the microSD & micro-SDHC memory card up to 32GB.
- Color-display to playback the scanned images.
- Built-in Wi-Fi for file transfer.
- Support Scan Direct function.
- Scan Direct Wi-Fi –Connect with mobile device or PC through Wi-Fi and the scanner is able to scan the image and directly display on the mobile device or PC.

2. Functional Parts



1	LCD screen	Display scanning status, scanned image and scanner settings.
2	ENTER	Power On/ Off: Press and hold this key for 3 seconds to turn power on or off. In power on mode with PC connection, press this button shortly to switch between Standby mode and USB mode. In Setup mode, press this button to confirm changes. In Playback mode, press this button to change the zoom times between 4x, 8x and normal.
3	JPG/PDF	Press this button to select JPG (JPEG), PDF-A (PDF-A4) or PDF-L (PDF-Letter) file format. The icon of the selected mode will be displayed on the LCD screen. In Setup mode: Press this button to move up the selection bar. In Playback mode: Press this button to preview the former image. When zooming in under Playback mode: press it to move to the upper/left portion of the image.
4	WIFI	Press this button to enter Setup mode. In Playback mode: Press this button to enter the single file delete mode. When zooming in under Playback mode: press this button to shift the functions of JPG/PDF and DPI between UP/DOWN and LEFT/RIGHT. In standby mode: Long press this button to turn Wi-Fi on or off.
5	DPI	Press this button to select LO (300dpi), MI (600dpi) or HI (1200dpi) scan quality in DPI. The icon of the selected quality will be displayed on the LCD screen. In Setup mode: Press this button to move down the selection bar. In Playback mode: Press this button to preview the latter image. When zooming in under Playback mode: press it to move to the lower/right portion of the image.
6	BACK	Press this button to enter Playback mode; Press this button to return to the previous screen In Setup mode: Press this button to exit Setup mode.
7	Width controller	Adjust to scan documents of different sizes
8	microSD card slot	The microSD card storage location.
9	Reset	Press to reset the scanner (Hardware reset)
10	USB interface	Connect to a computer with the USB cable provided to view and transfer files To charge up the built-in battery with an optional AC/DC power adapter

3. Explanation of the Status Icons



Item	Function	Description
1	Scan Format	JPG/PDF-A/PDF-L
2	Scan Resolution	LO: 300 DPI / MI: 600 DPI / HI: 1200 DPI
3	Battery Power Indicator	Fully charged Low battery. Recharge needed
4	Scan Color	COLOR/MONO
5	File Counter	Shows the number of scanned files in the microSD card

4. Using the Scanner

4.1. Charging up the Battery

Charge the built-in battery before starting to use your scanner. When the scanner is at power off condition, the charging time from empty to full is about 1.5 hours.

The battery can be charged up in either of the following ways:

1. By connecting to an AC/DC power adapter via the USB interface (Not included).
2. By connecting to a computer with the included USB cable.

Note:

When charging is completed during scanner power off, the fully charged battery indicator will be displayed on the LCD screen for a short time and will turn off automatically.

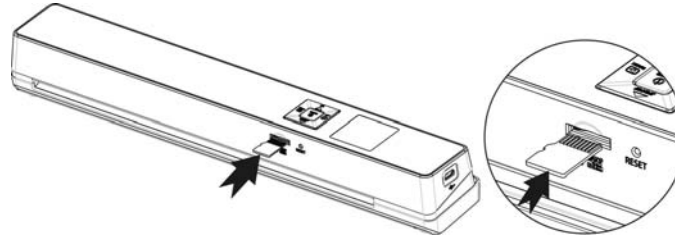
4.2. Inserting a microSD Memory Card (not included)

You must insert a microSD Card (not supplied) to record and store your pictures. To insert the microSD memory card:

1. Turn OFF the scanner.
2. Insert the microSD card into the microSD card slot, and gently press in until the card is latched.

Notes:

1. Do not force the microSD card into the slot as this may damage both the scanner and the microSD memory card. If the card cannot be inserted successfully, align the microSD card position (as marked) and try again.
2. The microSD memory card must be formatted before scanning. Refer to section 4.7 for details.



4.3. Turning on/off the Scanner

Turn on/off the scanner by pressing and holding ENTER for 3 seconds.

Notes:

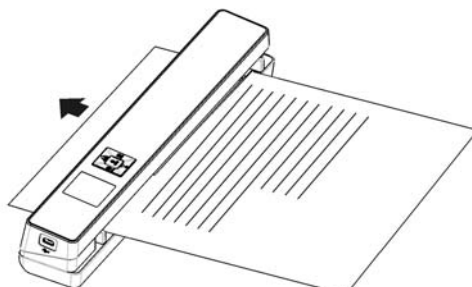
1. If the Auto off is set at "3 Min" (refer to section 4.7), the scanner will turn off automatically if no scanning action is detected within 3 minutes.
2. If the scanner is turned on by the first time or the scanner has been reset, it will enter a Date & Time/Language setup mode. Only after you have completed the settings for Date & Time/Language can the scanner enter into standby mode.

To set Date & Time/Language:

1. Press ENTER to jump to next setting option: YEAR →MONTH →DATE →HOUR → MINUTE.
When setting up the value for MINUTE, press BACK to return to the previous setting option until going back to YEAR.
2. Press JPG/PDF or DPI to set the figure corresponding to each setting.
3. Press ENTER to confirm and move to next setting.
4. After completing the setting for MINUTE, it will enter language setup screen.
5. Press JPG/PDF or DPI to select your desired language.
6. Press ENTER to confirm and enter standby status.

4.4. How to Scan

1. Adjust the Width Controller to an appropriate gear in accordance with the size of the document.
2. Smooth the edge of the document before scanning.
3. Aim the edge of the document at the slot of the scanner. (Align to the Left side of the slot.)
4. Softly insert the paper into the slot and gently push it, scanning will start automatically.



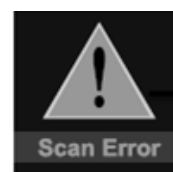
During scanning, the scanning status icon will be displayed on the LCD screen to indicate scanning is under progress.



5. If the scanner is connected to the computer via the USB interface, press the ENTER once to enter the USB mode, then you can view the scanned files on your computer screen.

Notes:

1. When conducting scanning with connection to an external power supply, the scanner will enter the battery charging mode if no scanning action is detected within 1 minute subsequent to each scanning.
2. If "Scan Error" icon pops up on the LCD screen, you need to replace the original memory card with another higher class MicroSD card. (Class 6 or above is recommended).The error image will still be saved after the scanning stops.
3. If the instant preview is set to "on", no matter the scan result is normal or abnormal, the scanned image will be shortly displayed on the LCD screen before the scanner returns to standby mode.
4. When the memory card is full, the scanner is unable to scan more images. If you feed the document into the slot under such situation, "Full" will flash rapidly on the File Counter of the LCD screen for 2 seconds.

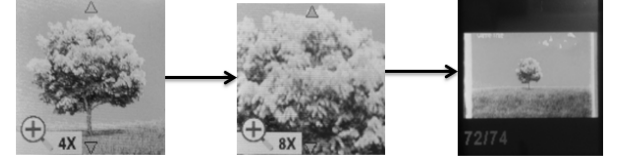


4.5. How to Playback Image

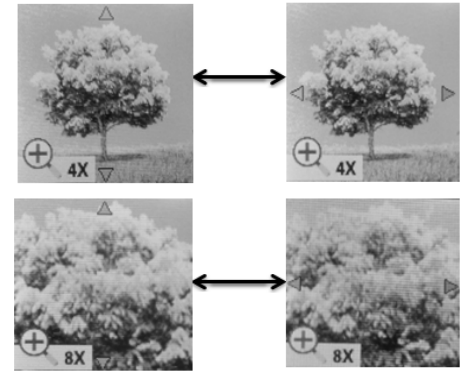
1. Press BACK to enter Playback mode. The last scanned image will be displayed.



2. Press JPG/PDF or DPI to select your desired image. Press ENTER to zoom in the image.
3. The ▲ and ▼ indicators will appear on the screen when pressing ENTER at step 2, press JPG/PDF to view the upper portion of the image, press DPI to view the lower portion of the image.
4. Press ENTER to change the zoom times between 4x, 8x and normal.



5. The ◀ and ▶ indicators will appear on the screen when pressing the gear icon again. The functions of JPG/PDF and DPI will be shifted to LEFT and RIGHT and you can press JPG/PDF or DPI button to view the left or right portion of the image.
Note: When zooming in under Playback mode (4x, 8x), you may choose to view upper/lower or left/right portion of the image by pressing the gear icon to shift the functions of JPG/PDF and DPI between UP/DOWN and LEFT/RIGHT according to your needs.



6. Press BACK to return to the previous Playback screen, press it again to return to standby mode.

Note:

When scanning one relatively long document or scanning several documents in a row, the scanned image cannot be magnified if the file size exceeds 9 MB.

4.6. Deleting Single File

1. Press BACK to enter Playback mode.
2. Press JPG/PDF or DPI to select the file you want to delete.
3. Press the gear icon to enter Delete File mode.
4. Press JPG/PDF or DPI to select "Yes" or "No".
Select "Yes" to delete the current file in the microSD card;
Select "No" to return to previous Playback screen.
5. Press ENTER to confirm your selection and return to the previous Playback screen.

4.7. Setup Menu

1. Press the gear icon to enter Setup menu
2. Press BACK or the gear icon to exit Setup menu.

Follow the below three steps to enter setup screen for each Menu item:

1. Press the gear icon to enter setup mode.
2. Press JPG/PDF or DPI to select the Menu item you want to set.
3. Press ENTER to enter the setup screen.

Menu items	Description	Options
JPG/PDF	Scan Format	• JPG • PDF - A (A4) • PDF - L (Letter)
Quality	Scan Quality (DPI)	• LO-300 DPI • MI-600 DPI • HI-1200 DPI
Color	Scan Color	• Color • Mono
Language	Menu Language	• English • Spanish • French • German • Italian • Dutch • Russian • Japanese • T. Chinese • S. Chinese
Date/Time	Date and Time	• Year • Month • Date • Hour • Minute
Inst.Preview	Instant Preview	• On • Off
Auto Off	Auto Power Off	• Off • 3 Min
Delete All	Delete All Files	• No • Yes
Format	Format the microSD Memory Card	• No • Yes
Reset WiFi	Reset the Wi-Fi settings	• No • Yes

Device Info	Device Information	<ul style="list-style-type: none"> FW version Wi-Fi Name HTTP Address
-------------	--------------------	--

4.8. Calibrating the Scanner

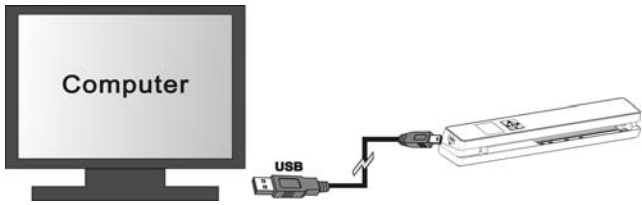
If the scanned images are too dark or too bright, you may need to calibrate your scanner by adjusting the white light balance. Follow the below steps to perform calibration:

1. Take out the microSD card from the scanner.
2. Turn on the scanner by pressing the Enter button.
3. Press and hold **JPG/PDF**, then press **ENTER**. Release both buttons afterwards to enter the auto-calibration mode. The message "1. Insert the calibration sheet" will pop up on LCD screen.
4. Insert this white balance calibration card as arrow direction with the text side facing down. The scanner will start scanning the calibration card. During the scanning process, it will stop for a while, meanwhile, the other message "2. Calibration in progress!" will pop up. Wait for about 40 seconds, the scanner will continue to finish scanning the rest of the card.
5. When the message "3. Calibration completed!" pops up on the LCD, calibration is completed. Press any button to power off the scanner.

5. Connecting to Computer

You may also connect your scanner to your computer and view pictures on the computer monitor

1. Press and hold **ENTER** to turn on your scanner.
2. Connect your scanner to your computer. Press **ENTER** once to enter into USB mode.
3. Your computer will recognize the scanner as a "Removable Disk". The USB icon will be displayed on the LCD screen. Open the disk and go to file folder DCIM\100MEDIA to view, import, copy, move or delete the scanned files.



Note: If the Removable Device Window did not launch automatically, go to your "My Computer/Computer" and find the device under Removable Disk.

6. Using the Wi-Fi Function

6.1. Enabling the Wi-Fi Function

View and transfer file from the scanner to your computer, laptop, smart devices and tablets via Wi-Fi mode.

1. Turn on the scanner, then press and hold **WIFI**. The "Starting" indicator will display on the status LCD.
2. Wait 30-40 seconds for Wi-Fi to initialize.
3. The "Ready" indicator will display on the status LCD once Wi-Fi mode is enabled and ready for connection.



Notes:

1. The use of Wi-Fi function will consume more battery power. To preserve battery power, it is suggested to turn the Wi-Fi off while you are not using it.
2. In Wi-Fi mode, unless you are using the SCAN Direct function in the free Application, you cannot use the scanner to scan files. Refer to section 6.3 to utilize the SCAN Direct function to directly scan files to your device.
3. You cannot perform calibration in Wi-Fi mode.

6.2. Connect to the Scanner via Wi-Fi

1. Turn on the Wi-Fi mode on your scanner.
2. Go to network setting on your computer/smart device to enable the Wi-Fi setting
3. With the "Ready" indicator displayed on the scanner's status LCD, search for the "WIFISCAN" network
4. Enter password "123456789" to connect to the scanner
5. The "Connected" indicator will display on the scanner's status LCD once Wi-Fi is connected with the device.
6. Open Internet browser and input "192.168.1.2" or "wifi.scan" in the address bar to enter navigation page.



In the navigation page, all the scanned images will be presented on the browser in thumbnails, you can view and delete files stored in the scanner or change Scanner Wi-Fi settings.

View files from Internet Browser via Wi-Fi

Click the "View" button to preview a single file.

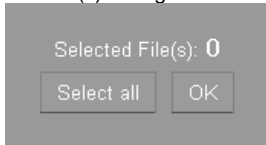
Note:

If a file in JPG format exceeds 4MB, the notification "Image is too large" will be presented and the file cannot be previewed from Internet Browser via Wi-Fi.



Delete files from Internet Browser via Wi-Fi

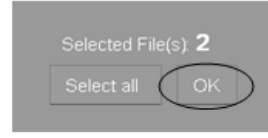
1. Delete your selected files.
 - a. Click the "Delete" icon to enter the Delete mode, the "Selected File(s)" dialogue box will pop up.



- b. Select the files you want to delete by ticking them off.



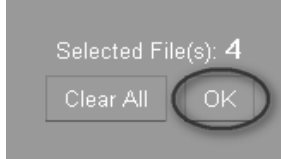
- c. Click the "OK" icon on the "Selected File(s)" dialogue box to delete your selected files.



2. Delete all files:
 - a. In the "Selected File(s)" dialogue box that pops up, click the "Select all" icon, it will change to "Clear all". All the files in current page will be ticked off.



- b. Click the "OK" icon to delete all files in current page.



Click the "Clear all" icon, all the ticks in current page will disappear. Click the "OK" icon again to confirm.

Change Scanner WiFi settings

In navigation page, click "Scanner WiFi settings" to modify the default settings. When conducting the scanner Wi-Fi settings on the phone, only when you click the "MENU" icon will the "SCANNER WiFi SETTINGS" option pop up.

1. Filling in your new SSID, Password, IP Address and Domain Name in the blanks accordingly.
2. Click "Submit" icon to submit your setting.
3. After completing Scanner Wi-Fi settings, you should reconnect Wi-Fi.

Note:

Viewing error may occur when previewing larger files on browser. Turn off the Wi-Fi mode and connect the scanner to a computer via USB cable to view your files.

6.3. Using the Free App

1. Search for creative Scan+ app via the Google Play Store of an Android device or via the App Store of an IOS device.
2. Download and install the app to your smart device.
3. Turn on the Wi-Fi mode on the scanner.
4. Go to network setting on your smart device and enable the Wi-Fi setting.
5. With the "Ready" indicator displayed on the scanner's status LCD, search for the "WIFISCAN" network.
6. Enter password "123456789" to connect to the scanner.
7. Open your creative Scan+ app. You may conduct relevant operations in accordance with the specific Application interface.

Brief introduction of our App:

Scan+ App is a mobile application applicable for both IOS and Android platform, which interconnects with your portable scanner through Wi-Fi connection.

Scan+ App allows you to check the scanner's battery status, Wi-Fi connection status, file uploading status on your iOS or Android mobile device. You can scan files directly to your mobile device via the SCAN Direct function, browse the files saved in your scanner, sort out these files by date, size or file format, view file details and rename the files. You can save the scanned files to your mobile device, add or delete tags to those files, combine more than one file into one Multi-page PDF file, log in your social media account and share your file(s) to social media such as Dropbox, Facebook, check the Scan+ App version.

6.4. Wi-Fi Reset

You may reset the Wi-Fi settings to default condition via the setup menu of the scanner. Please insert a microSD card before conducting the Wi-Fi reset.

1. Turn on the scanner and enter the Reset Wi-Fi menu. Refer to section 4.7 to enter the Reset Wi-Fi menu.
2. After entering the Reset Wi-Fi menu, a message "Reset the Wi-Fi settings?" will be displayed on the LCD screen. Select "Yes" to confirm and the message "Reset in progress!" will be displayed on the status LCD.
3. The message "Reset completed!" will be displayed on the status LCD when Wi-Fi reset is completed. Press any button to return to setup menu.

7. Specifications

Image sensor	A4 Color Contact Image Sensor	
Resolution	Low resolution : 300x300 dpi Medium resolution: 600x600 dpi High resolution: 1200x1200 dpi	
Minimum scanning speed for Letter size document	Color High resolution	8.0 Seconds
	Mono High resolution	8.0 Seconds
	Color Medium resolution	4.0 Seconds
	Mono Medium resolution	4.0 Seconds
	Color Low resolution	4.0 Seconds
Capacity (Based on 1GB microSD card.	Color High resolution	140 Scans (Min.)
	Mono High resolution	150 Scans (Min.)

Scan Letter size file, the quantity of scans varies depending on the content complexity)	Color Medium resolution Mono Medium resolution Color Low resolution Mono Low resolution	550 Scans (Min.) 600 Scans (Min.) 1580 Scans (Min.) 1600 Scans (Min.)
Scanner photo size	A4、A5、5R、4R、3R and below	
Scan width	216mm	
Scan length	300DPI:130"(max);600DPI:60"(max);1200 DPI:55"(max)	
File format	JPEG/PDF	
LCD	1.44" TFT LCD	
Dimensions (LxWxH) mm	280x46x38.8	
Auto power off	3 Minutes	
USB port	USB 2.0 high speed	
External memory	microSD Card	
Standard battery	Built-in 1200mAH Lithium-Polymer	
Wi-Fi®	802.11b/g/n	

8. Computer System Minimum Requirements

Operating System	Windows 7&8 / Vista / XP and Mac OS 10.5 or above
CPU	Pentium III or above
RAM	At least 256MB
Interface	USB port

9. Troubleshooting

Problem	Cause	Solution
Cannot turn on the scanner	Low battery power	Recharge the battery
Pictures cannot be saved while you are scanning them	1. The microSD card has not been installed 2. Memory is full 3. The microSD card has not been formatted properly	1. Insert a microSD card 2. Transfer the pictures from the scanner to the computer to create storage space in the memory card 3. Please refer to section 4.7
"Scan Error" icon pops up on the LCD screen	The speed of the microSD card is relatively low	Replace the original memory card with another higher class microSD card. (Class 6 or above is recommended)
Computer does not recognize your scanner when connected (You cannot find your device under removable disk)	Connection failure	1. Make sure all cable connections are secured 2. Restart the computer if necessary
Blurry images	1. The lens of scanner is dirty 2. Contact Image Sensor aged	1. Clean the lens with soft and dry cloth 2. Recalibrate the scanner. Refer to section 4.8
Black Images/Black or white vertical lines	1. Scanner sensor's protective glass is dirty 2. Calibration data is off-set	1. Clean the sensor's protective glass with clean and soft dry cloth. 2. Recalibrate the scanner. Refer to section 4.8
Wi-Fi abnormal connection	1. Abnormal connection 2. The battery power is low.	1. Reconnect the Wi-Fi. Refer to section 6. 2. Charge the built-in battery with the included USB cable or an AC/DC power adapter via the USB interface (Not included).

FCC Statement

Warning: Changes or modifications to this unit not expressly approved by the party responsible for compliance could void the user's authority to operate the equipment.

NOTE: This equipment has been tested and found to comply with the limits for a Class B digital device, pursuant to Part 15 of the FCC Rules. These limits are designed to provide reasonable protection against harmful interference in a residential installation. This equipment generates, uses and can radiate radio frequency energy and, if not installed and used in accordance with the instructions, may cause harmful interference to radio communications.

However, there is no guarantee that interference will not occur in a particular installation. If this equipment does cause harmful interference to radio or television reception, which can be determined by turning the equipment off and on, the user is encouraged to try to correct the interference by one or more of the following measures:

- Reorient or relocate the receiving antenna.
- Increase the separation between the equipment and receiver.
- Connect the equipment into an outlet on a circuit different from that to which the receiver is connected.
- Consult the dealer or an experienced radio/TV technician for help.

This device complies with Part 15 of the FCC Rules. Operation is subject to the following two conditions:

- (1) This device may not cause harmful interference.
- (2) This device must accept any interference received, including interference that may cause undesired operation.

Shielded cables must be used with this unit to ensure compliance with the Class B FCC limits.



AM-TSN48W-GB-STD-2