

SKYVIPER™

V950 STR VIDEO
STREAMING
DRONE



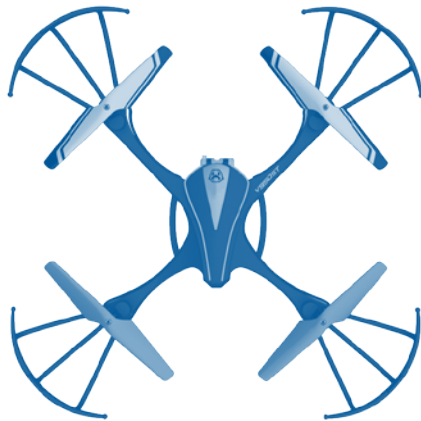
12+

Download the Sky Viper
Video Viewer app at



INSTRUCTION GUIDE

CONTENTS



RC Streaming Drone



Remote Control



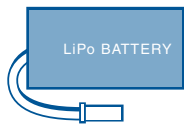
Screws



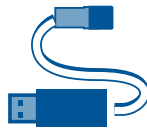
Screwdriver



Device Holder



Rechargeable 3.7v
650mAh LiPo Battery

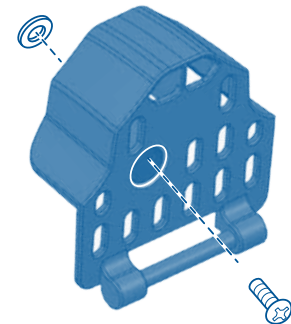


USB Charging Cable



4 Replacement Blades

Battery door includes security screw to prevent child access to LiPo battery. Users over 14 years of age may remove screw from door for easier access.



Remove all packaging attachments before giving the toy to a child.

Not suitable for children under 3 years due to small parts that could be swallowed.

Conforms to product safety standards ASTM F963.

Keep instructions for future reference. Do not discard.

BC



CAUTION: Consumers should confirm the lawful use of this product with local authorities as laws may vary.



This device complies with PART 15 of the FCC Rules. Operation is subject to the following two conditions. (1) This device may not cause harmful interference, and (2) this device must accept any interference received, including interference that may cause undesired operation.

CAUTION: Changes or modifications to this unit not expressly approved by the party responsible for compliance could void the user's authority to operate the equipment.

NOTE: This equipment has been tested and found to comply with the limits for a Class B digital device, pursuant to Part 15 of the FCC Rules. These limits are designed to provide reasonable protection against harmful interference in a residential installation. This equipment generates, uses and can radiate radio frequency energy and, if not installed and used in accordance with the instructions, may cause harmful interference to radio communications. However, there is no guarantee that interference will not occur in a particular installation. If this equipment does cause harmful interference to radio or television reception, which can be determined by turning the equipment off and on, the user is encouraged to try to correct the interference by one or more of the following measures: Reorient or relocate the receiving antenna - Increase the separation between the equipment and receiver - Connect the equipment into an outlet on a circuit different from that to which the receiver is connected - Consult the dealer or an experienced radio/TV technician for help.

ADULT SUPERVISION REQUIRED

Before each use, an adult should check this product and the LiPo battery to ensure no damage or hazards exist. Drone has rotating blades that move at high speed, posing danger of damage and injury. Pilots are responsible for any actions that result in damage or injury from the improper operation of Drone. Adequate flying space is required. Avoid flying near interior fans and/or vents as they may make flying difficult to control. Keep a safe distance away from streets, public thoroughfares and power lines. Never attempt to retrieve Drone from any location higher than your reach (such as rooftops or trees) or from any location that poses a safety hazard. Never fly Drone at night. Keep Drone in sight at all times during operation. Discontinue operation immediately if Drone flies out of your field of view. Do not fly near spectators or animals. Pets can become excited about R/C vehicles therefore keep away from pets at all times. Keep spinning rotors away from fingers, hair, eyes and other body parts. Always launch from a flat surface. Never leave Drone unattended while it is turned on. Read all enclosed information before operating.

THIS PRODUCT CONTAINS A LITHIUM-POLYMER BATTERY 3.7V 650mAh:

LiPo batteries have a severe risk of fire and injury if they are improperly handled or misused. They may explode, overheat or ignite. Read all following precautions and instructions regarding the care and use of LiPo batteries. The enclosed LiPo battery is only to be used with the vehicle and charger included with this product.

- Keep away from flammable materials.
- Do not expose to direct sunlight.
- Do not place in fires or leave in hot places.
- Do not drop or make subject to strong impact.
- Keep dry and away from water.
- Remove exhausted batteries as soon as possible and discard properly.
- Remove all batteries from the compartment if toy is not used for a long period.
- The supply terminals are not to be short circuited.
- Never throw batteries in a fire or attempt to open outer casing.

LiPo Battery Disposal: LiPo batteries must be recycled or disposed of properly. They should not be disposed of with other household waste. Check your local laws and regulations for correct recycling and/or battery disposal.

ALKALINE BATTERY CAUTIONS

- Do not use rechargeable batteries.
- Non-rechargeable batteries are not to be recharged.
- Different types of batteries or new and old batteries are not to be mixed.
- Batteries are to be inserted using correct polarity.
- Remove exhausted batteries as soon as possible and discard properly.
- Remove all batteries from compartment if toy is not used for a long period.
- The supply terminals are not to be short-circuited.
- Never throw batteries in a fire or attempt to open the outer casing.

WARNING: Batteries are harmful if swallowed. Please keep away from children.

Battery Disposal: Dispose of batteries according to the local laws and regulations of your region. Some batteries may be recycled, and may be accepted for disposal at your local recycling center. If you are not able to identify the applicable rules in your area, please check the instructions of the battery manufacturer.

BLADE GUARDS FOR BEGINNERS

Blade guards are great for beginning pilots and can be easily installed if desired. The guards however add undesired weight and reduce flight performance. Blade guards are optional and should NOT be used with Advanced Flight Sensitivity setting 3.

- 1 Insert the posts of the blade guards into the holes of the drone.
- 2 Secure the blade guards with the retaining screws.



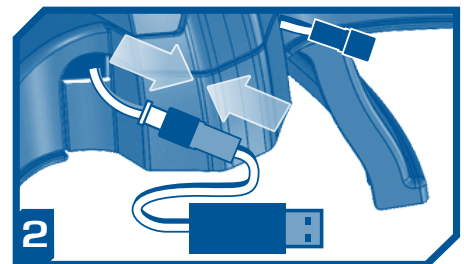
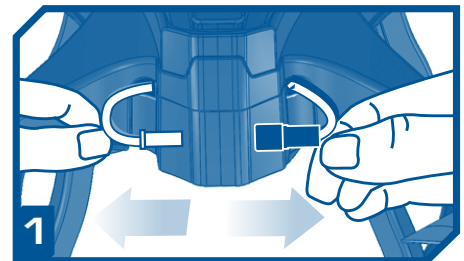
CHARGING, INSTALLING & CARING FOR LIPO BATTERY IN THE DRONE

- 1 Disconnect the LiPo battery connectors hanging out from the back of the drone.
- 2 Plug the red male connector from the LiPo battery into the black female connector end of the USB charging cord.
- 3 Plug the USB end of the charging cord into a USB power source and charge battery until full.

RED LIGHT = CHARGING

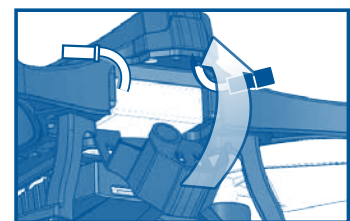
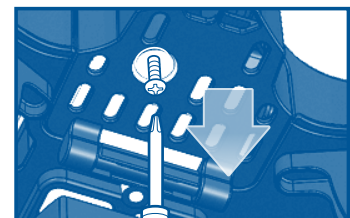
GREEN LIGHT = FULLY CHARGED

- 4 Once fully charged, disconnect the charging cord from battery and power source. (Always unplug from power source when not in use).



IMPORTANT:

LiPo battery can be removed from Drone by loosening battery compartment screw, opening door and removing the battery. When replacing the battery, be careful not to pinch battery connector wires when closing the door. Also ensure that wires protrude through open slots on the sides of the battery door as shown. Make sure there is sufficient wire slack for easily connecting and disconnecting plugs, but not so much slack that wires interfere with spinning blades.



CHARGING PRECAUTIONS:

After use, allow LiPo battery to cool down to room temperature before charging again.

- Charge LiPo battery in an isolated area, away from excessive heat or moisture.
- If LiPo battery swells, unplug it immediately and permanently discontinue use.
- Do not modify, heat, or wet the battery in any way. Only recharge with provided charger.

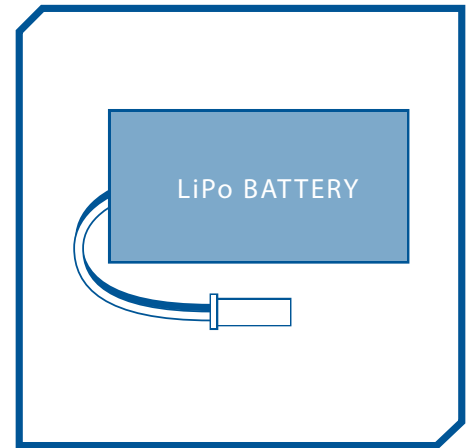
WARNING!

IF AT ANY TIME DURING CHARGING OR USE THE BATTERY BECOMES DAMAGED IN ANY WAY, DISCONTINUE CHARGING OR USE OF THE BATTERY IMMEDIATELY.

Continuing to charge or discharge a battery that has been damaged can result in a fire. Quickly and safely disconnect the Drone from charging and place away from flammable materials. Observe the battery for at least 30 minutes to be certain no additional swelling or rupture occurs. Completely discharge the battery by submerging it in a saltwater solution (1/2 cup salt per gallon of water) for 24 hours. Check your local laws and regulations for correct recycling and/or battery disposal.

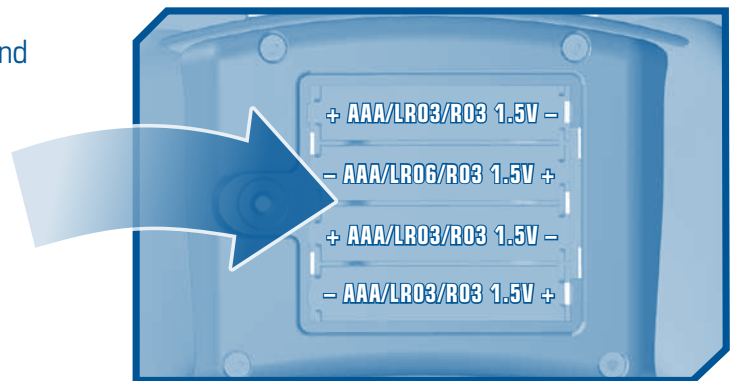
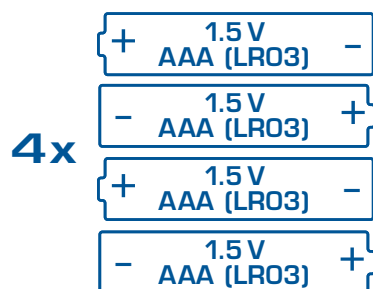
WHEN NOT IN USE:

- Always **UNPLUG** the Drone's LiPo battery when not in use or when Drone is being stored or transported.
- Store the LiPo battery and Drone in a dry area at room temperature.
- Avoid temperatures less than 40°F/4°C and greater than 120°F/49°C.
- Do not leave the LiPo battery in a car or exposed to direct sunlight. If exposed to temperatures greater than 120°F/49°C, the LiPo battery can be damaged or may catch fire.



INSTALLING REMOTE BATTERIES

Loosen screw in the Remote Control battery compartment door with Philips screw driver and insert batteries as shown. Replace door and tighten screw.



AUTO SHUTDOWN:

- If battery voltage drops to an extremely low level, Drone will automatically shutdown. The Video Drone will need to be recharged to restore flying power.
- If anything prevents Drone's blades from spinning or they become jammed, Drone will automatically shutdown. The LiPo battery will need to be unplugged, then reconnected to restore flying power.

FLIGHT SENSITIVITY ADJUSTMENT

Drone responsiveness may be adjusted on the Controller to match your flying skills. There are three choices:

1. BEGINNER – 2. INTERMEDIATE – 3. ADVANCED

It is best to start in **BEGINNER MODE 1** until you have mastered flying. Flight sensitivity can be adjusted before or during flight.

IMPORTANT: Advanced Mode 3 is a performance flight setting for **OUTDOOR USE ONLY**. Blade guards and camera module **MUST BE REMOVED** for proper flight operation in Mode 3.



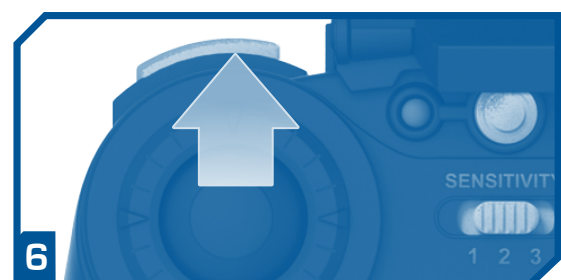
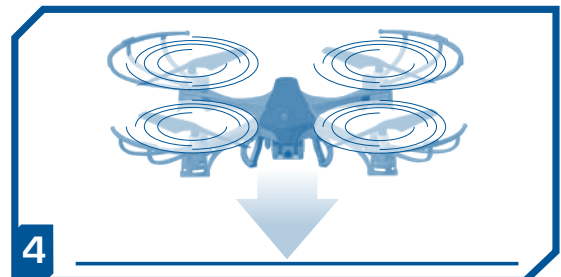
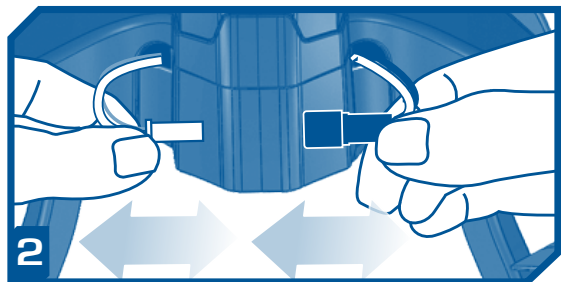
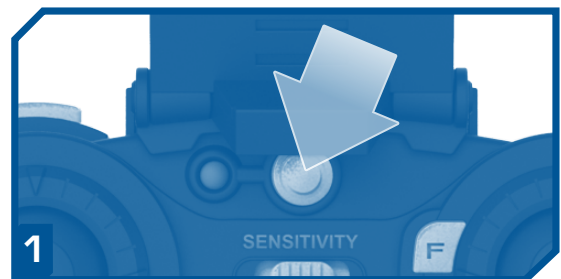
-  1 - **BEGINNER**
-  2 - **INTERMEDIATE**
-  3 - **ADVANCED**

CALIBRATING & LAUNCHING

- 1** Turn **OFF** Remote Control.
- 2** Disconnect the LiPo battery connectors hanging out from the back of the drone.
Pull connectors, not wires.
- 3** Reconnect battery connectors.
- 4** Quickly place Drone on **FLAT LEVEL SURFACE**.
- 5** Turn Remote Control **ON**.
- 6** Slowly push remote control **THROTTLE STICK UP** until Drone lifts into the air.

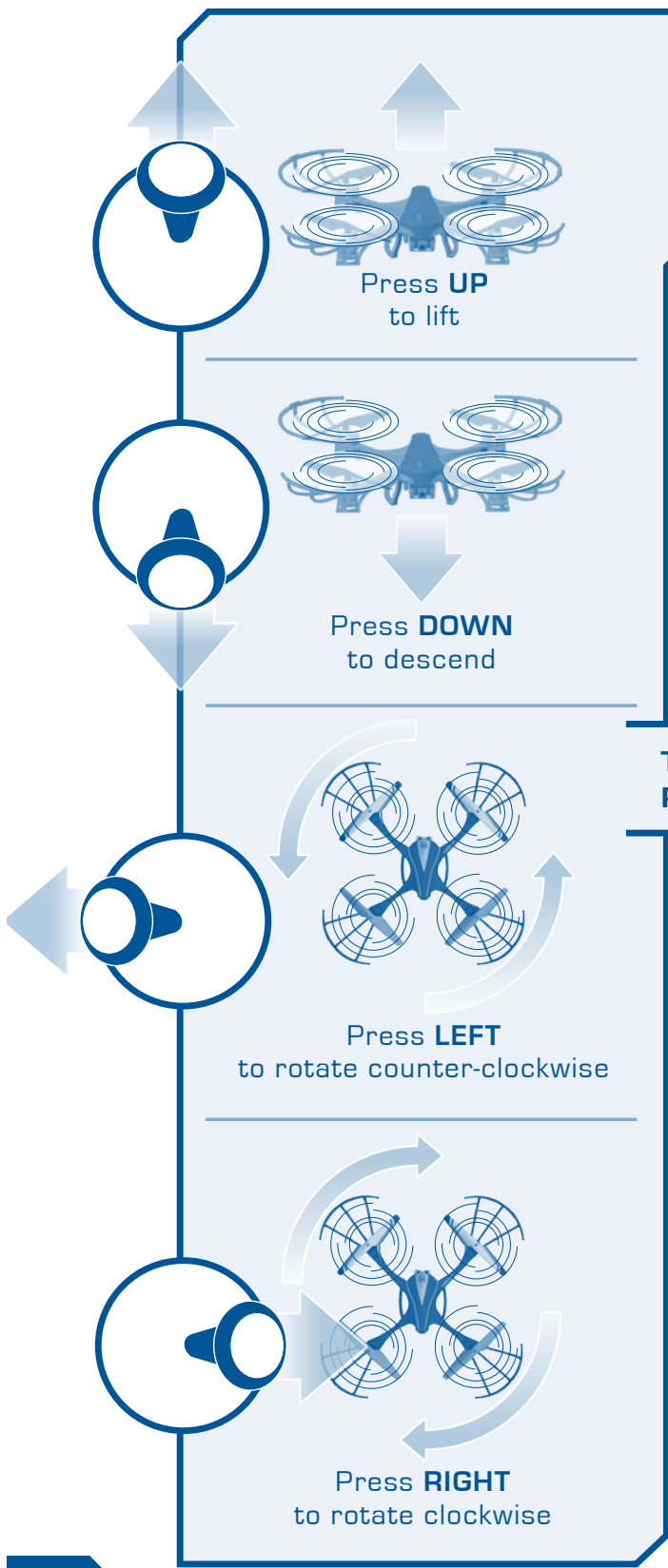
IMPORTANT: YOU ONLY HAVE A FEW SECONDS AFTER THE LIPO BATTERY IS PLUGGED IN TO PLACE DRONE ON A LEVEL SURFACE FOR PROPER CALIBRATION. IF DRONE DOES NOT RISE TO A STABLE HOVER OR FLIES ERRATICALLY, REPEAT STEPS 1 THROUGH 6.

CAUTION: NEVER APPROACH DRONE WHILE THE PROPELLER BLADES ARE STILL SPINNING. THROTTLE DOWN UNTIL THE BLADES STOP THEN TURN OFF REMOTE BEFORE ATTEMPTING TO HANDLE DRONE.



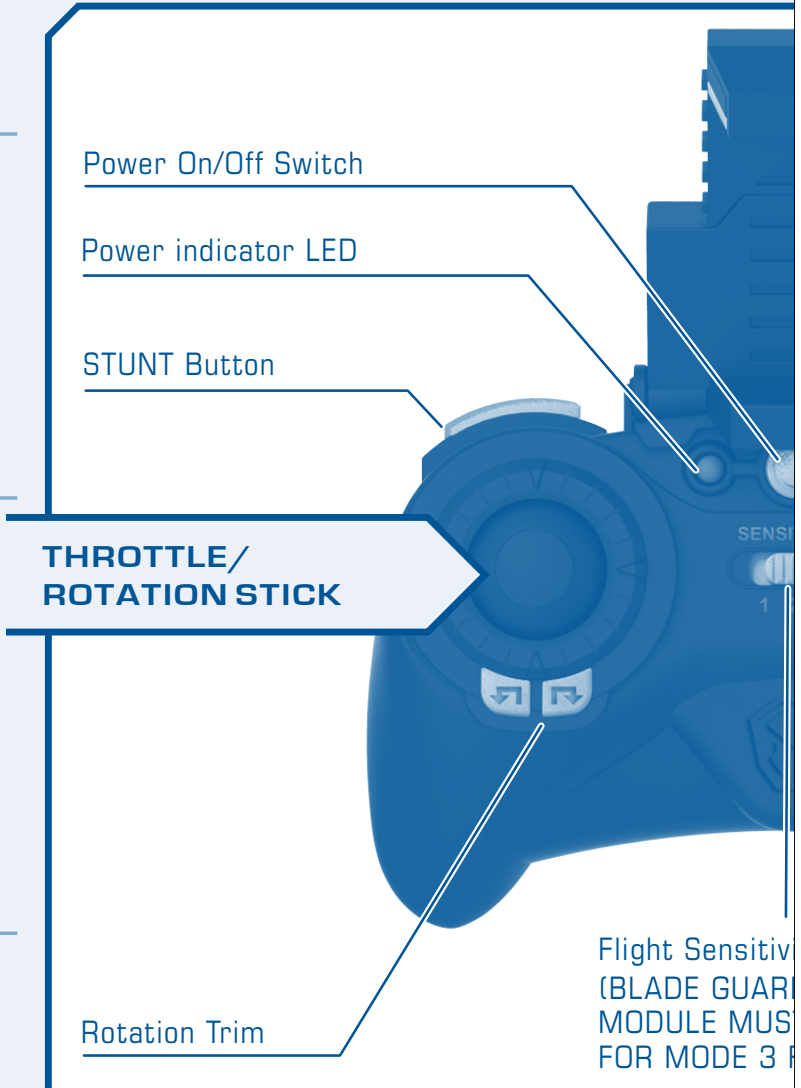
FLIGHT CONTROLS

Familiarize yourself with Drone's controls before flying!



THROTTLE/ROTATION STICK

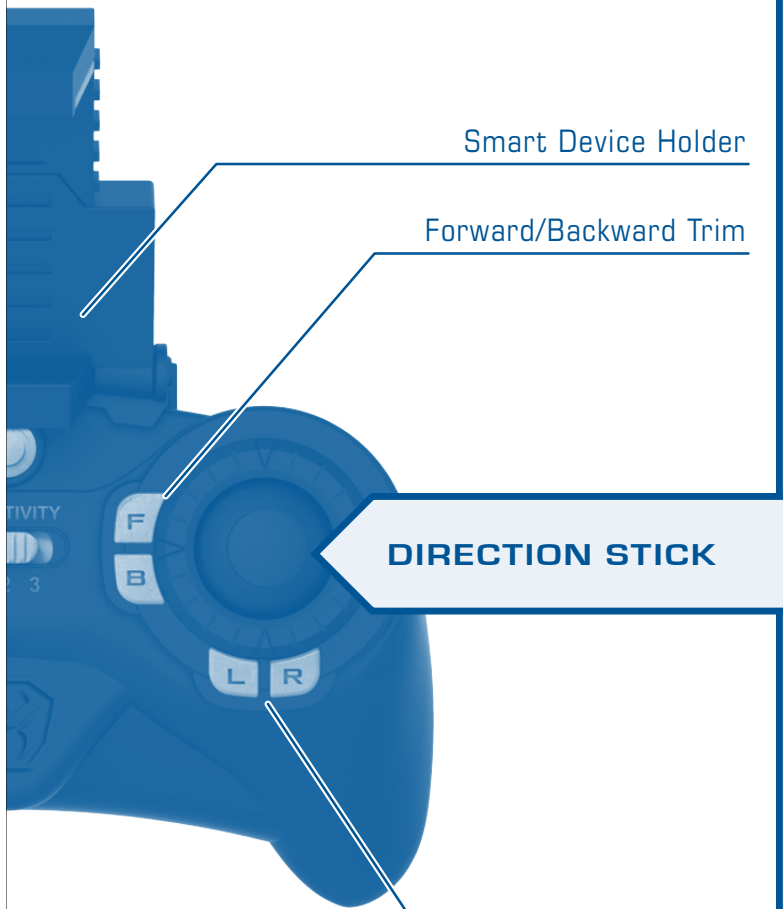
- To make the Drone **LIFT**, press the THR
- The further you **PUSH** the THROTTLE S
- To make the Drone **HOVER**, find the sw
- (somewhere in the middle).



DIRECTION STICK

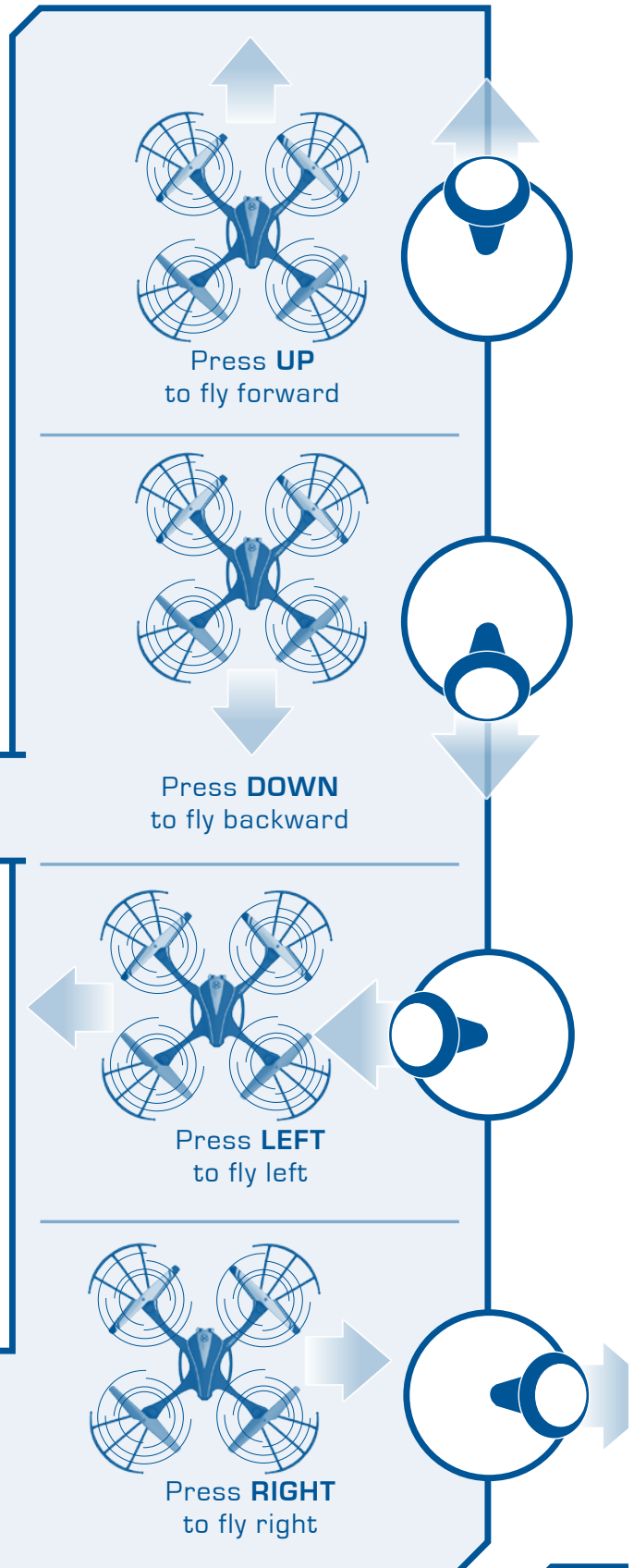
- Push the Direction stick **FORWARD**
Push **BACKWARD** to fly backward
The farther you push, the faster Dr
- Push the Direction stick **LEFT** to f
The farther you push, the faster Dr

PULL THROTTLE STICK **FORWARD**.
 PULL TRIGGER STICK, the faster you **LIFT**.
 Press the green spot on the THROTTLE STICK



Emergency Stop Switch
 (DO NOT REMOVE FROM FLIGHT)

Press **FORWARD** to fly forward or away from you (Green blades in front).
 Press **BACKWARD** to fly backward.
 Press **LEFT** to fly left. Push **RIGHT** to fly right.
 Press **UP** to fly upwards. Press **DOWN** to fly downwards.



TRIM ADJUSTMENTS

If Drone drifts in any direction while hovering (and you are not pressing the Direction stick), you may need to make trim adjustments. Safely land Drone on a level surface. Press the recommended Trim button once as described below. Launch the Drone back into the air and attempt another still hover. If Drone continues to drift, repeat the process until a still hover is achieved:

- Drone drifts forward
– Press the **B button**
- Drone drifts backward
– Press the **F button**
- Drone drifts to the left
– Press the **R button**
- Drone drifts to the right
– Press the **L button**
- Drone spins counter-clockwise, when viewed from the top
– Press the **↶ button**
- Drone spins clockwise, when viewed from the top
– Press the **↷ button**

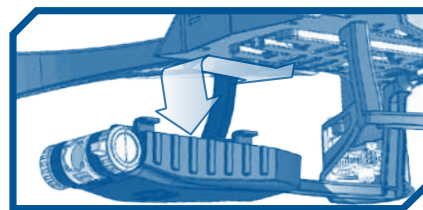
NOTE: THE REMOTE WILL BEEP/FLASH 3 TIMES WHEN TRIM ADJUSTMENT IS SET TO THE NEUTRAL POSITION (THE MIDDLE OF THE TRIM RANGE) AND BEEP ONCE WHEN IT HAS REACHED THE END OF IT'S RANGE.

FLYING TIPS

- When launching the Drone, face the same direction as the Drone. Green blades should be in front.
- Practice launching, hovering and landing before attempting to learn other moves.
- Flying 2 to 3 feet above the ground will reduce ground turbulence and make flying easier.
- When first attempting to fly in different directions, start by tapping the Direction stick until you have a feel for it. Always move the controls slowly until you become comfortable operating the drone.
- Once you've mastered flying in directions, practice Rotational controls. Spinning and keeping Drone facing the same direction you are facing makes flying easier and more intuitive.
- Stay 2 to 3 feet away from walls and ceilings as Drone will be drawn towards them if you fly too close.
- If propeller blades come in contact with another object or you crash, throttle down immediately to prevent possible or further damage.
- If anything prevents Drone's blades from spinning or they become jammed, **THROTTLE DOWN IMMEDIATELY**. Do not attempt to fly until obstruction has been removed and damage fixed.
- Should something prevent Drone's blades from spinning, Drone may **AUTO SHUTDOWN**. LiPo battery will need to be unplugged then reconnected to restore flying power.
- If the Drone flies too far away, beyond the control range of the remote, the Drone will **AUTO-LAND** to prevent the Drone from flying away out of control.

REMOVING & REATTACHING CAMERA MODULE

The Camera Module is easily removed to improve flight performance. Simply unplug the camera connector and slide the camera module forward to disconnect from drone. To reconnect, simply clip camera module back onto drone and plug in the wire connector.



STREAM LIVE VIDEO TO YOUR SMART DEVICE

Sky Viper Streaming Drone is equipped with WiFi connectivity, so you can view streaming video on your smart device.

DOWNLOADING THE APP

iOS

Go to the App Store and search for Sky Viper Video Viewer app. Then, click install.



Android

Go to the Google Play Store and search for Sky Viper Video Viewer app. Then, click download.

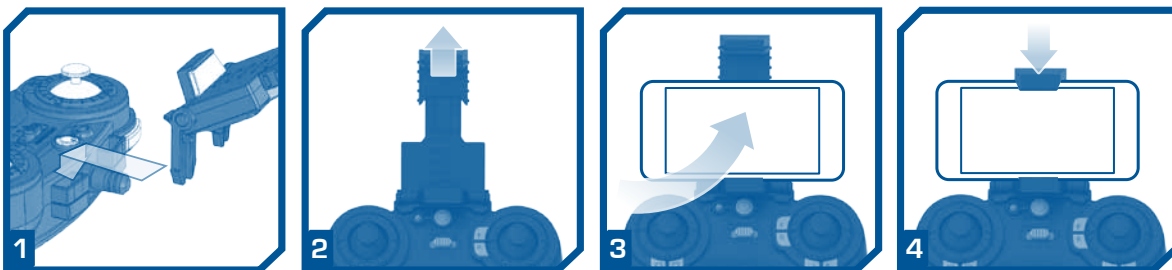


CONNECTING TO THE STREAMING DRONE WITH YOUR DEVICE

- 1 Go to Wi-Fi setting on your smart device.
- 2 Select SKYVIPER_XXXXXX and connect.
- 3 Open the Sky Viper app on your device.
- 4 The App will bring up your Drone's ID.
- 5 Follow the on-screen icons to interact with your Drone.

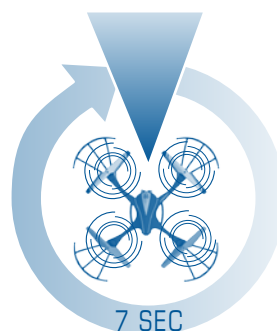
ATTACHING YOUR DEVICE TO THE REMOTE

- 1 Install the DEVICE HOLDER to remote.
- 2 Pull the DEVICE HOLDER arm.
- 3 Insert a smart device (Devices larger than 3.1/8" wide can be used, can not be attached to remote).
- 4 Follow app directions for streaming, recording and video playback.



360° PANORAMIC VIEW ROTATION

- 1 While HOVERING, press and hold the **STUNT BUTTON**.
- 2 Move the **DIRECTION STICK** (Right or left) to start drone rotation.
- 3 Press the **RECORD BUTTON** on your **smart device** to start recording. Press again to stop recording.



ONE TOUCH STUNTS

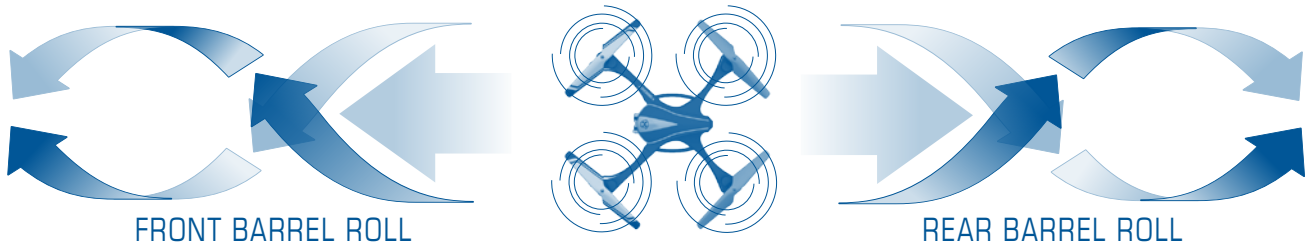
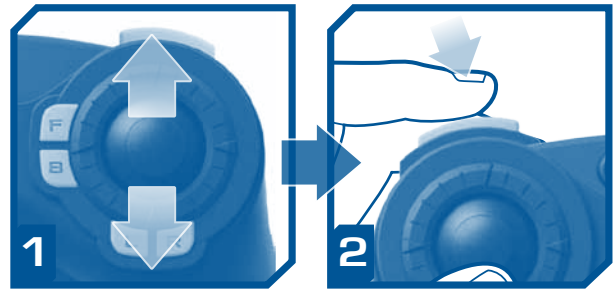
IMPORTANT

REMOVE THE CAMERA UNIT FROM THE DRONE BEFORE PERFORMING STUNTS. STUNT FUNCTIONS WILL NOT WORK WITH CAMERA UNIT ATTACHED. ALSO REMOVE BLADE GUARDS WHEN FLYING IN ADVANCED SENSITIVITY MODE 3.

BARREL ROLLS

While flying forward (or reverse), press the **STUNT BUTTON**.

NOTE: Once a stunt has been initiated, DO NOT adjust Throttle or press any other controls until the stunt has been completed.



FRONT BARREL ROLL

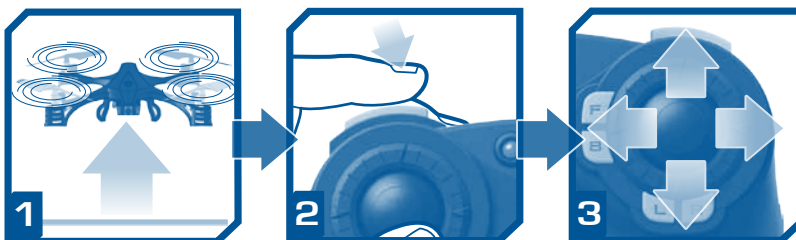
REAR BARREL ROLL

FLIPS

- 1 Bring the Drone to a mid air hover without flying in any direction. Remove finger from the **DIRECTION STICK**
- 2 While HOVERING, press and hold the **STUNT BUTTON**.
- 3 While still holding the **STUNT BUTTON**, tap the **DIRECTION STICK** in the direction you want the drone to flip.



RIGHT FLIP



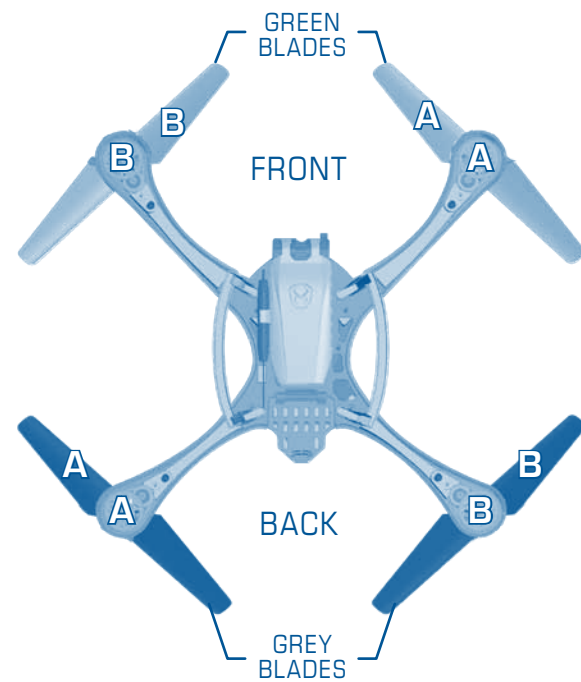
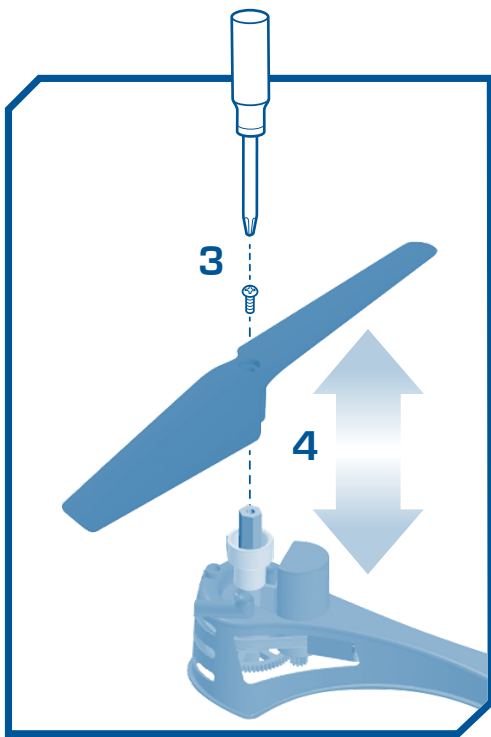
FRONT FLIP

CAUTION!

Drone should be flying at least 9 feet in the air with a minimum clearance of 9 feet in all directions before attempting stunt functions. STUNT FUNCTIONS SHOULD BE PERFORMED OUTSIDE ONLY.

CHANGING DAMAGED PROPELLERS

- 1 Unplug LiPo battery on Drone.
- 2 Make note of the blade color and letter (A or B) before removing the blade from Drone. (Markings are located on the underside of blades and Drone).
- 3 Remove the small screw using the mini screwdriver provided.
- 4 Replace the damaged blade with a new blade with matching color and letter. Secure the blade with the retaining screw.



Bottom View of Drone

WARNING: Do not fly with broken or damaged propeller blades as it may cause damage or lead to injury.

MAINTENANCE

Over time, loose hair or carpet fibers may get wound in blades, reducing performance. Unplug Drone and remove fibers from motors. (Remove blades if necessary)

TROUBLESHOOTING

PROBLEM	SOLUTION
Drone is unresponsive or behaving erratically	<ul style="list-style-type: none">• Drone may be miscalibrated by launching from an unlevel surface. Turn the remote off and unplug Drone's battery for 30 seconds then turn them back on and try again from a flat, level launching surface.• Ensure your remote is within unobstructed view of Drone and you are within 30 feet range.• Ensure the remote has fresh batteries and the LiPo battery is fully charged.• Inspect Drone for any possible damage. Turn the remote off and unplug Drone's battery for 30 seconds then turn them back on and try again from a flat, level launching surface.
All blades spin, but Drone will not fly properly	<ul style="list-style-type: none">• Drone's blades may have been installed incorrectly. Reinstall and remember that the Green blades point forward.
Drone drifts in any direction during flight without direction from the remote	<ul style="list-style-type: none">• Adjust the trim controls until drifting ceases, see page 7.
Drone crashes immediately	<ul style="list-style-type: none">• Propellers may be installed in the wrong position. Ensure proper installation.
Drone crashes when attempting stunt functions	<ul style="list-style-type: none">• Ensure that Drone is flying a minimum distance of 9 feet from the ground with a minimum 9 feet clearance in all directions.
Stunt button does not work	<ul style="list-style-type: none">• Be sure to detach the camera unit from the Drone.
Drone flight is erratic when Flight Sensitivity is set to 3	<ul style="list-style-type: none">• Ensure blade guards and camera module are removed to reduce performance inhibiting weight.

www.skyrockettoys.com/products/sky-viper

#skyviper



Customer Service :
888-674-5650

