
Intelligent Backhaul Radio

Installation & Operation Manual



PURPOSE

This Installation Guide provides detailed information related to initial configuration and installation of Fastback Network’s Intelligent Backhaul Radio (“IBR”). Supporting information is contained in the *IBR Administration & Command Line Interface Guide (“CLI Guide”)*.

Table of Contents

Federal Communications Commission (FCC) Compliance Statement	4
1. Introducing Intelligent Backhaul Radio (“IBR”)	5
1.1 Overview	5
1.2 Transmit & Receive Frequencies.....	5
1.3 Radio Features.....	5
1.4 Switch Features	5
1.5 Regulatory Compliance	6
1.6 Deployment Options.....	6
1.7 Physical & Environmental Features.....	6
2. Getting Started	7
2.1 Physical Inspection	7
2.2 Inventory	8
2.3 External Features	8
2.4 Power Requirements	9
2.5 Technical Assistance.....	9
3. Communicating with IBR	10
3.1 Access Control	10
3.2 Serial Console	10
3.3 Remote Access & Default IP Addresses	11
3.4 Graphical User Interface (“GUI”).....	11
3.5 Command Line Interface (“CLI”).....	12
3.6 Antennas	13
3.7 Gigabit Ethernet Ports.....	13
3.8 Interfaces.....	13
3.9 External Ethernet connectors	13
3.10 LEDs.....	13
4. Preconfiguring IBR	13
4.1 Orienting IBRs For Bench Test And Preconfiguration	13
4.2 Applying Power	14
4.3 Logging Onto IBR Using Factory-Set User Name & Password.....	14
4.4 Entering CLI User Mode.....	14
4.5 Entering CLI Privileged Mode	14
4.6 Confirming VLAN Settings	15
4.7 Displaying IBR IP Address	15
4.8 Separating Management Traffic From Data Traffic.....	15
4.9 Saving New Configuration.....	18
4.10 Changing Host Name	18
4.11 Changing Passwords	18
4.12 Password Recovery.....	18
4.13 Setting System Clock	18
4.14 Configuring IBR Name Server.....	19
4.15 Configuring IBR NTP Server	19
4.16 Configuring IBR SNMP Server.....	19

4.17	Setting Link ID.....	19
4.18	Establishing A Radio Link.....	20
5.	MAC Address Table & Counters	20
5.1	MAC Address Table	20
5.2	Counters	20
6.	Installing IBR	21
6.1	Installation Checklist	21
6.2	Safety Considerations.....	22
6.3	Mounting IBR	22
6.4	Connecting Power & Ethernet.....	26
6.5	Connecting The Serial Port (Optional)	26
6.6	Establishing A Link.....	27
6.7	IAS - Link Interference Analysis.....	27
7.	Features & Functionality	27
7.1	Communication Protocols	27
7.2	Software Management	27
7.3	SNMP.....	27
7.4	Switching & Transport.....	28
7.5	Data Handling	28
7.6	Carrier Ethernet.....	28
7.7	Timing & Synchronization	28
7.8	Network Time Protocol (NTP).....	28
7.9	System Message Logging	29
7.10	Quality of Service (QoS) & Class of Service (CoS).....	29
7.11	Security.....	29
7.12	Electromagnetic Interference ("EMI") Abatement.....	29
Appendix A – IBR Mounting Brackets		30
A 1.	Wall/Pole Mounting Bracket.....	30
A 2.	Articulating Mount.....	33

Federal Communications Commission (FCC) Compliance Statement

This equipment has been tested and found to comply with the limits for a Class B digital device pursuant to Part 15 of the FCC Rules. These limits are designed to provide reasonable protection against harmful interference when the equipment is properly installed and operated in accordance with instructions contained in this manual. In addition, this equipment complies with FCC radiation exposure limits for operation in an uncontrolled environment.

The equipment should not be operated if it becomes out of compliance with FCC Rules. In order to ensure continued compliance with FCC Rules, the equipment:

- Should be installed in a restricted area that is accessible only by authorized service personnel.
- Should not be operated within thirty centimeters (30 cm) of personnel.
- Should not be operated if it is or becomes damaged.
- Should be connected to other devices by shielded cables of the correct types.
- Should not be repaired or modified except by Fastback Networks.

Failure to comply with these instructions could void the operator's authorization to operate the equipment.

1. Introducing Intelligent Backhaul Radio (“IBR”)

1.1 Overview

IBR combines a Carrier Ethernet switch and an AnyLOS™ radio that can simultaneously operate in non-, near-, and clear line of sight radio conditions. It is designed for small cell deployment in dense urban environments where line of sight between radios is difficult or impossible to achieve.

IBR is small, passively-cooled, and environmentally protected for use mainly in macro-cellular backhaul, commercial services fiber fill-in, and small cell backhaul applications. It can be mounted on masts, poles, walls, cell towers, or in other such locations and requires little or no alignment when the radios are pointed in the general direction of one another.

NOTE: For safety reasons and FCC compliance, IBR should be installed in a restricted access location that is accessible only by authorized service personnel.

1.2 Transmit & Receive Frequencies

There are two versions of IBR that operate together to form the two ends of a link.

- IBR58, a 5.8 GHz radio, transmits in the band from 5.725 GHz to 5.85 GHz and receives in the band from 5.25 GHz to 5.35 GHz.
- IBR53, a 5.3 GHz radio, transmits in the band from 5.25 GHz to 5.35 GHz and receives in the band from 5.725 GHz to 5.85 GHz.

1.3 Radio Features

IBR uses adaptive rate modulation, proprietary interference avoidance and cancellation techniques, and antenna array signal processing to deliver reliable and secure high speed data transmission over links where line-of-sight between radios is difficult or impossible to achieve. The table below shows IBR performance in a typical installation.

IBR Performance¹

Data Rate	Scalable to 500 Mbps
Average Latency	≤ 500 μsec
Operating Range	Up to 500m NLOS ² and 2Km LOS ³
Operating Frequencies	5.25 to 5.35 GHz and 5.725 to 5.85 GHz (U-NII/ISM ⁴)
EIRP	≤ 30 dBm (5.3 GHz); ≤ 36 dBm (5.8 GHz)

1.4 Switch Features

IBR provides the following Carrier Ethernet 2.0 features:

- Layer 2 transport
 - VLAN (up to 4096)
 - Bridge mode (pass through)
- Management
 - CLI
 - Telnet
 - SSH
 - Serial console
 - SNMP MIB support

¹ Performance might vary depending on environmental conditions

² Non-line-of-sight

³ Line-of-sight

⁴ Unlicensed National Information Infrastructure/ Industrial, Scientific, & Medical

- Interface-MIB
- MIB II
- Enterprise MIB
- o Packet-based timing – 1588v2 transparent clock w/submicrosecond latency
- o QinQ (IEEE 802.1ad)
- o QoS
 - Eight queues
 - 802.1p classification
 - Strict scheduling
 - PIR shaping
- o 256 bit AES encryption
- o Physical link and network layer redundancy for maximum service uptime
- o Service protection and reliability

1.5 Regulatory Compliance

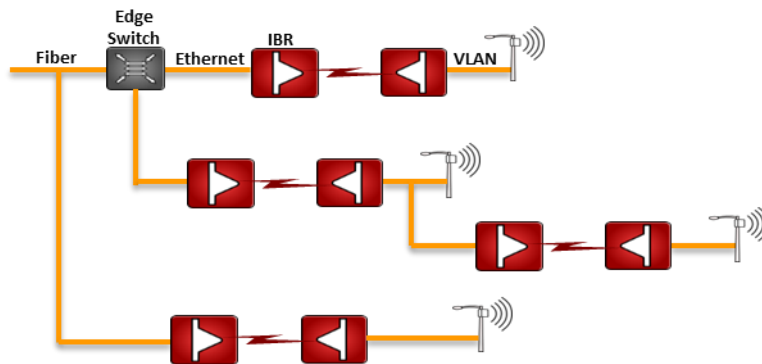
IBR is compliant to the applicable portions of the following standards.

- o Radiation: FCC Part 15
- o EMC/EMI5: FCC Part 15 Class B
- o NEBS6: GR-3108
- o Safety: UL 60950-1, UL 60950-22, CAN 60950-1
- o Environmental: IP66

1.6 Deployment Options

IBR is designed to be deployed in pairs creating a point-to-point link, as illustrated in the diagram below. In referring to the two radios, IBR nearest to the fiber connection is called the “aggregation IBR” and the one nearest to the cell site is the “remote IBR”.

- o IBR can be connected to an edge switch.
- o IBRs can be connected to one another in a multi-hop configuration.
- o IBR can provide backhaul for a direct connection to a small cell site (SC).



1.7 Physical & Environmental Features

IBR:

⁵ Electromagnetic Compatibility/Electromagnetic Interference

⁶ Network Equipment Building Systems

- Is passively cooled and can operate continuously at full power and duty cycle under maximum solar load at ambient temperatures from -40° C to +60° C.
- Can be stored safely at temperatures in the range from -55° C to +85° C.
- Experiences a wind load of less than 300N when exposed to a wind speed of 265 km/hr.
- Has an IP66⁷ environmental rating.

IBR weighs approximately 4 kg and has the approximate dimensions shown in the illustration.



[Return to Table of Contents](#)

2. Getting Started

2.1 Physical Inspection

Prior to opening the shipping crate, inspect it visually for evidence that it has been opened or mishandled. After opening the crate, carefully inspect the contents for completeness or evidence of damage or tampering.

In the event the shipping crate is damaged or the contents are damaged or incomplete, notify Fastback Networks by telephone, fax, or email. The shipping crate, dividers, and packing materials should be retained for use in the event that equipment must be returned to Fastback Networks.

After removing IBR from its packing crate, record the serial number and model number (IBR58 or IBR53), both of which will be needed in case it is necessary to seek assistance from Fastback Network's Customer Support Group.

DO NOT BREAK THE TAMPER SEALS ON HARDWARE. DOING SO WILL VOID THE WARRANTY AND MIGHT CREATE A SAFETY HAZARD AND/OR CAUSE THE EQUIPMENT TO BE OUT OF COMPLIANCE WITH FCC REGULATIONS.

⁷ Ingress Protection Rating

DO NOT ATTEMPT TO APPLY POWER TO AN IBR THAT SHOWS SIGNS OF DAMAGE, TAMPERING, OR MISHANDLING.

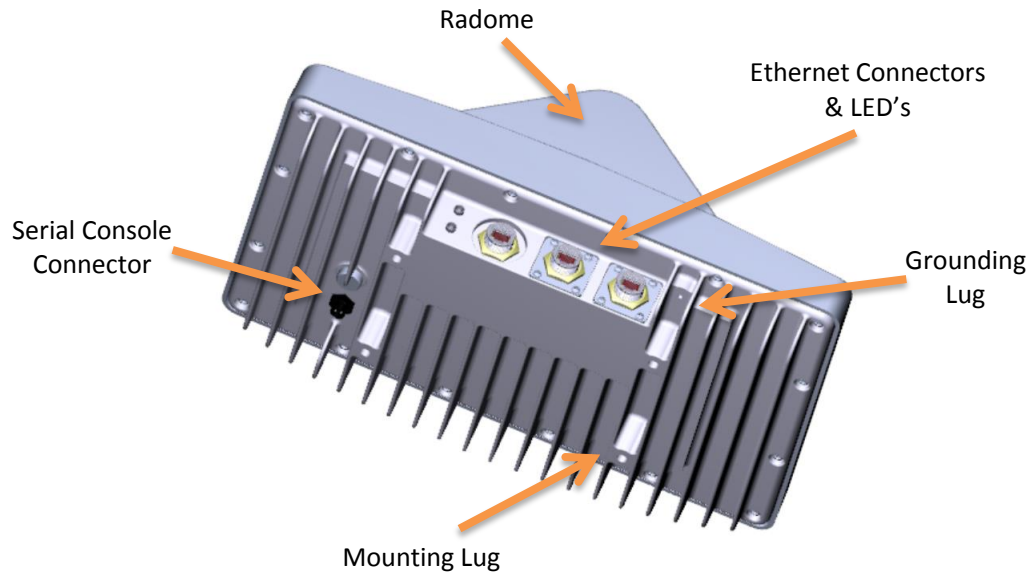
2.2 Inventory

The following components are required for successful installation of IBR:

- (a) One IBR53, Model IBR-1000-38N and one IBR58, model IBR-1000-83N. Each IBR includes the following:
- Three weatherproof RJ-45 cable-end connectors for CAT5E & CAT6 cables*;
 - A weatherproof cap for the four-pin serial connector that is attached to IBR when the IBR serial connector is not in use*.
 - Two weatherproof caps for RJ-45 connectors that are attached to IBR when the IBR RJ-45 connectors are not in use*.
 - A two-meter serial cable with a DB-9 connector on one end and a four-pin connector on the other end;
 - Six crimp-on ends for RJ-45 connectors & instructions
 - An information sheet for accessing regulatory documents and manuals on line;
 - A quick reference guide;
 - A warranty registration card;
- *Note: For proper operation of IBR, the weatherproof integrity of all cables and connectors should be maintained and weatherproof caps should be firmly installed on unused connectors at all times.*
- (b) A mounting bracket for each IBR. Fastback Networks can supply two types: (a) a fixed wall/pole mount, model IBR-AC-BRP, and (b) an articulating wall/pole mount, model IBR-AC-BRA.
- (c) An IP-66 rated PoE+ injector for each IBR; model IBR-AC-PON.
- (d) A PoE Injector Mounting Kit, model IBR-AC-POM for each IBR.

2.3 External Features

The illustration below identifies external features of IBR.



The side where the mounting lugs and serial port are located is referred to as the “back”, since it is the side that will be against a wall or mast when IBR is mounted.

The side that has the three Ethernet connectors and two LEDs is referred to as the “bottom”. Even though the connectors are weatherproof, IBR should be mounted with the connectors facing downward for maximum environmental protection.

2.4 Power Requirements

IBR must be powered via PoE+ through the RJ-45 connector labeled Port 0. Applying PoE+ through any of the other Ethernet connectors will cause no harm, but will not power IBR.

Operating at full RF power, IBR requires less than 25.5 watts, thereby conforming to the IEEE 802.3at Type 2 standard for PoE+.

IBR does not have a capability to provide PoE to other devices on the network.

IBR may be powered by a FastBack power injector or by the *PowerDsine 9001GO Power over Ethernet (PoE) single-port Midspan injector*.

2.5 Technical Assistance

In the event there is a problem with IBR or other equipment provided by Fastback Networks (e.g., it arrives damaged or incomplete, or appears to not work properly), the operator should contact Fastback Networks’ service center via telephone or email and be prepared to provide:

- Product type and serial number
- Product service history (e.g., when was it received, how long has it been in service, other relevant information)
- Description of the problem
- Customer contact information

Fastback Networks’ Customer Service can be reached by email at customer.service@fastbacknetworks.com, or by telephone at (408) 430-5440 & select the Service option.

[Return to Table of Contents](#)

3. Communicating with IBR

IBR has no external or internal keypads, switches, dials, knobs, or other physical controls. Therefore, an operator will require a smart terminal, computer, workstation, or other such device to communicate with IBR using command line interface and accessing IBR via any of the Ethernet ports using Telnet or SSh or via the serial console port.

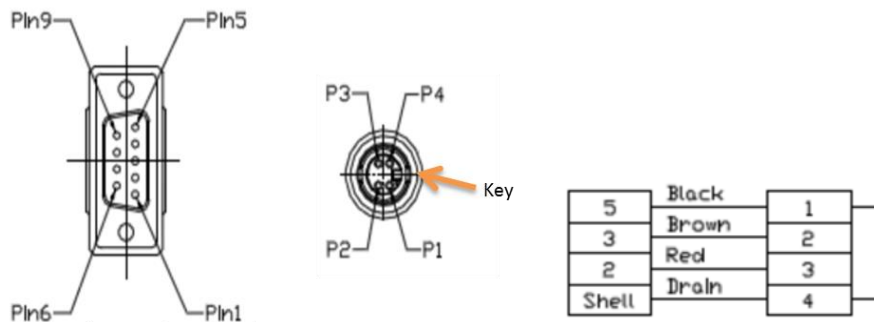
3.1 Access Control

IBR can be configured to require a valid user ID and password for access. Two levels of access can be established: minimum functionality and full functionality. Detailed instructions for controlling access to IBR are contained in the *CLI Guide*.

3.2 Serial Console

IBR has a four-pin connector that provides a serial interface for connection to a local operator terminal. This interface typically will be used by an operator to communicate with and control the IBR during preconfiguration and troubleshooting or at other times when a local operator needs to communicate with IBR other than over an Ethernet link.

The mating cable that is provided with IBR has a DB9 connector on the other end. The illustrations below show the pinouts of the two connectors and the cable wiring scheme.



This interface can be used by an operator only to control, configure, and troubleshoot IBC, but not for general network connectivity or data transmission. Pin-outs of the four-pin serial connector are shown in the table below.

PIN #	Purpose
1	Ground
2	Transmit
3	Receive
4	Not used

The following settings are recommended when communicating with IBR via the serial interface:

- 115,200 bps
- 8 data bits
- 1 stop bit
- No parity

- No flow control
- 25 lines and 80 columns window size

NOTE: If a serial device is disconnected and then reconnected, CLI might be left in a “bad command” state and not respond to legitimate commands. This condition can be cleared by entering <cr> <cr> <Ctrl-C>.

3.3 Remote Access & Default IP Addresses

IBR may be accessed remotely over the network from telnet or SSH. The default IP addresses are:

192.168.128.53 for the 5.3 GHz IBR; and

192.168.128.58 for the 5.8GHz IBR.

The default hostnames are IBR53 and IBR58 for the 5.3 GHz and 5.8GHz IBRs, respectively.

3.4 Graphical User Interface (“GUI”)

IBR’s GUI provides an alternate way to monitor and control IBR. The following describes the top level screens that are available in the GUI. As a user navigates the pages of the GUI, a “Help” button at the top right corner of each page will open a page in this CLI Guide that corresponds to the subject matter of the GUI page.

3.4.1 Site Map

The GUI has four top level screens. A user will initially land on the Site Map which has three buttons across the top that will open the Configuration, Monitor, and Maintain screens, respectively. Below each button is a list of topics and subtopics that can be accessed from that button.

3.4.2 Configuration Screen

The Configuration screen provides the following features.

System

DNS	Add or delete DNS
SNMP	Set contacts and locations Set views Configure communities Configure traps/notifications Show views
LED	Turn LEDs on or off
NTP	Add, delete, view NTPs

Radio

General	Set link ID Configure radio history functions (BLER, MCS, RSSI, SNR)
Receiver	Clear Rx channel Set Rx channel, Rx profile
Transmitter	Turn transmitter on or off Clear Tx channel Set Tx channel, Tx profile, bandwidth Set attenuation, power mode
FEC	Enable/disable BARQ

	Set BARQ maximum retries
Resource Control	Enable/disable RRC Set RRC mode Configure RRC Block/unblock frequencies Configure RLC

Switching

Global	Set maximum MTU Set up bridging Set L2 aging Clear counters
VLAN	Add/delete VLAN Set default gateway Manage VLANs
Ports	Clear port counters Shut down ports Set trust level Set duplex mode

3.4.3 Monitor Screen

The Monitor screen displays status of the IBR system, radio, switching, counters, and ports.

3.4.4 Maintain Screen

Maintenance features available on the Maintain screen include the following:

<i>About</i>	Provides general information about the system.
<i>Tech Support</i>	Download a file to send to Tech Support
<i>Running Configuration</i>	Shows the current configuration
<i>Upgrade</i>	Upload new software image to upgrad IBR
<i>Web User Mgmt</i>	Create and delete web user list
<i>Factory Default</i>	Reset radio configuration to default Rest all configurations to factory default
<i>Device Features & RBAC</i>	Create User Groups and Permission Groups
<i>Reboot</i>	Restart IBR

3.5 Command Line Interface (“CLI”)

When an operator logs onto IBR, CLI will be launched in startup (i.e., “User”) mode that provides minimal functionality.

- CLI is supported on the serial interface and via Telnet or SSH connections through the Ethernet interface.
- CLI uses a mix of IOS syntax.
- Access to the full functionality mode (i.e., “Privileged” mode) can be controlled by password.

Detailed information can be found in the *CLI Guide*.

3.6 Antennas

The radome on top of IBR houses transmit and receive antennas that face outward through the flat sides of the radome. The direction in which the antennas are pointed can be changed only by changing the orientation of the IBR itself.

IBR is not designed to be used with external antennas.

3.7 Gigabit Ethernet Ports

IBR is a 4-port Ethernet switch. Three Gigabit Ethernet ports are exposed externally, and one is connected internally to the radio. Beginning with the port nearest the LEDs, the external Gigabit Ethernet ports are numbered 0, 1, and 2 (ge0, ge1, ge2).

The Gigabit Ethernet port that is connected to the radio (not externally available) is identified as Gigabit Ethernet 3 (ge3). Radio parameters are configured through the radio 0 interface, while switching parameters that apply both to the physical Gigabit Ethernet ports and the radio port, such as VLAN, QoS, and CoS, are configured through the Gigabit Ethernet interface.

3.8 Interfaces

Ethernet interfaces, including loopback interfaces, can be created, as discussed in the CLI Guide, and each port can be assigned to one or more interfaces.

3.9 External Ethernet connectors

- All three of the Ethernet connectors on the bottom of IBR can be used for traffic and IBR management data, but only the one nearest the LEDs (ge0) can accept PoE⁸.
- There are two variants of IBR: one has three RJ-45 connectors and the other has one RJ-45 (for ge0) and SFP⁸ connectors for ge1 and ge2.
- The RJ-45 connectors will accept shielded and bonded RJ-45 type mating connectors with a weatherproof seal. It is essential that only weatherproof connectors be connected to IBR.

3.10 LEDs

Two weatherproof LEDs that are mounted adjacent to ge0 provide a visual means for an operator to determine the status of IBR. Both LEDs can be deactivated via CLI command. See the *CLI Guide* for detailed information. When the LEDs are active (the default condition):

- The upper LED (when the LEDs are on the left from the viewer's perspective) will be green when an active Ethernet link is established between IBR and another device. This LED will be dark if no Ethernet link has been established.
- The lower LED will turn green when power is applied to IBR.

[Return to Table of Contents](#)

4. Preconfiguring IBR

The following procedure is for preconfiguring a pair of IBRs prior to installation.

4.1 Orienting IBRs For Bench Test And Preconfiguration

CAUTION: When power is applied, the radios automatically will begin transmitting.

⁸ Small form-factor pluggable fiber optic transceiver

To avoid the possibility of damaging an IBR by overdriving the front end of the receiver, prior to connecting a power source, position the radios so that they are tilted away from each other, facing downward, and separated by at least one meter.

Check the RSSI using the following CLI command in the Global Config mode:

```
IBR58 (config) # interface radio 0 status
```

RSSI should be -20dB or less. If RSSI is greater than -20 dB (e.g., -17dB, -15dB, etc.) then further separate the radios to avoid receiver saturation.

4.2 Applying Power

CAUTION - IBR does not have a power on/off switch, either in hardware or software. When power is applied to the unit, IBR will be in a “power on” condition and the lower LED beside the Port 0 connector will be green unless the LED has been disabled by the operator.

Apply power to each IBR using a PoE+ source connected to Gigabit Ethernet interface 0.

4.3 Logging Onto IBR Using Factory-Set User Name & Password

When CLI is launched and the “**user name**” dialog box appears, the user can enter either ***fn*** or ***admin*** for access (unless the user name has been changed by an operator). The factory-set **password is *fastback***. When a user with Privileged access changes the user name, changing either ***admin*** or ***fn*** will cause both to be changed to the new user name.

4.4 Entering CLI User Mode

When a user logs onto IBR with a valid user name and password, CLI automatically will be in the User Mode, which offers a limited set of commands. The CLI command prompt in User Mode is the symbol **>** followed by a space. When the command prompt is displayed, it will be preceded by the host name if one has been assigned. Throughout this manual and the *CLI Guide*, the host name ***IBR58*** will be used. The User Mode prompt is shown below:

```
IBR58 >
```

The host name can be changed or omitted by a Privileged user. The commands shown below are the only commands available in User mode.

User Commands

Mode/Command	Remarks
IBR>	User Mode
<i>enable</i>	Enter Privileged Mode
<i>ping</i>	Determine (a) if a remote host is active & (b) transit time
<i>traceroute</i>	Determine route & transit time to a remote host
<i>exit</i>	Close CLI

4.5 Entering CLI Privileged Mode

Enter Privileged (“Priv”) mode by entering the *enable* command:

```
IBR58 > enable
```

The default password for entering Priv mode is ***fastback***.

All CLI commands are available in Priv mode. For a detailed discussion of CLI commands, refer to the *CLI Guide*.

4.6 Confirming VLAN Settings

By default, VLAN functionality is enabled on IBR and all interfaces are assigned to VLAN1. During initial configuration, the operator should assign VLANs to interfaces as desired. IBR can be managed using any VLAN to which an IP address is assigned. See the section titled *Separating Management Traffic From Data Traffic* for details on assigning an IP address to a VLAN and using VLANs to segment management traffic from data traffic.

Interfaces may be configured to support both tagged and untagged packets. Each IBR interface can be configured to support ingress and egress of tagged packets for all VLANs connected to the interface except for a VLAN that is configured as native to that interface. Packets tagged with the VLAN number that is configured as the native VLAN for an interface will be dropped.

Enter the following command to confirm that vlan1 is enabled.

```
IBR58 # show vlan brief
```

The following is a sample return for this command.

VLAN	Name	Status	Native	Allowed
1	VLAN1	active	ge0 ge1 ge2 ge3	ge0 ge1 ge2 ge3

The response shown above indicates that vlan1 is attached to all eight interfaces.

4.7 Displaying IBR IP Address

Enter the following command to confirm that IBR has been assigned an IP address.

```
IBR58 # show ip interfaces
```

This command will return an output similar to the following example:

```
1: lo: <LOOPBACK> mtu 16436 qdisc noop
   link/loopback 00:00:00:00:00:00 brd 00:00:00:00:00:00
2: eth0: <BROADCAST,MULTICAST,UP,LOWER_UP> mtu 1500 qdisc pfifo_fast qlen 1000
   link/ether 18:48:d8:00:00:39 brd ff:ff:ff:ff:ff:ff
3: danipc: <BROADCAST,MULTICAST,UP,LOWER_UP> mtu 1500 qdisc pfifo_fast qlen
   1000
   link/ether 00:24:86:00:00:00 brd ff:ff:ff:ff:ff:ff
4: eth0.1@eth0: <BROADCAST,MULTICAST,UP,LOWER_UP> mtu 1500 qdisc noqueue
   link/ether 18:48:d8:00:00:39 brd ff:ff:ff:ff:ff:ff
   inet 10.21.2.195/16 brd 10.21.255.255 scope global
```

Following the first three interfaces in the output, there will be an additional interface for each VLAN. The name of the interface is eth0.nn where nn is the VLAN number to which the IP address is assigned. Note that even though the interface shows eth0, the IP address will be reachable only through interfaces to which that VLAN has been assigned.

4.8 Separating Management Traffic From Data Traffic

IBR interfaces should be configured in such a way as to separate internal management traffic from user data traffic (i.e., prevent management traffic from being sent over the network). The following sequence of commands illustrates a way to accomplish this. VLAN2, VLAN823, and the IP addresses shown are used only as examples.

4.8.1 Create VLAN interfaces

Prompt	Command	Remarks
IBR58 (config)#	interface vlan 1	Configure vlan1
IBR58 (config-vlan-1)#	ip address 192.168.128.158 255.255.255.0	
IBR58 (config-vlan-1)#	exit	
IBR58 (config)#	interface vlan 2	
IBR58 (config-vlan-2)#	no shutdown	
IBR58 (config-vlan-2)#	ip address 10.22.12.201 255.255.0.0	
IBR58 (config-vlan-2)#	exit	
IBR58 (config) #	interface vlan 823	
IBR58 (config-vlan-823) #	ip address 10.1.1.158 255.255.0.0	
IBR58 (config-vlan-823) #	exit	
IBR58 (config) #		

Note: When the management port has been reassigned, the Telnet connection will be lost and the operator will be required to Telnet to the new management port address.

4.8.2 Remove VLAN 1 from ge1, g2, and ge3.

Prompt	Command	Remarks
IBR58 (config)#	interface gigabitethernet 1	
IBR58 (config-if-ge1)#	no switchport trunk native vlan 1	
IBR58 (config-if-ge1)#	exit	
IBR58 (config)#	interface gigabitethernet 2	
IBR58 (config-if-ge2)#	no switchport trunk native vlan 1	
IBR58 (config-if-ge2)#	exit	
IBR58 (config) #	interface gigabitethernet 3	
IBR58 (config-if-ge3)#	no switchport trunk native vlan 1	
IBR58 (config-if-ge3)#	exit	
IBR58 (config) #	interface vlan 823	

4.8.3 Add VLAN 2 to the GigabitEthernet Interfaces (use Trunk Native)

Prompt	Command	Remarks
IBR58 (config)#	interface gigabitethernet 1	
IBR58 (config-if-ge1)#	switchport trunk native vlan 2	
IBR58 (config-if-ge1)#	exit	
IBR58 (config)#	interface gigabitethernet 2	
IBR58 (config-if-ge2)#	switchport trunk native vlan 2	
IBR58 (config-if-ge2)#	exit	
IBR58 (config) #	interface gigabitethernet 3	
IBR58 (config-if-ge3)#	switchport trunk native vlan 2	
IBR58 (config-if-ge3)#	exit	
IBR58 (config) #	interface vlan 823	

4.8.4 Add VLAN 823 to GigabitEthernet 3 (use Trunk Allowed)

Prompt	Command	Remarks
IBR58 (config) #	interface gigabitethernet 3	
IBR58 (config-if-ge3)#	switchport trunk allowed vlan 823	
IBR58 (config-if-ge3)#	exit	

4.8.5 Verify VLAN settings

Prompt	Command	Remarks
IBR58 #	show vlan brief	
VLAN	Name	Status Native Allowed
-----	-----	-----
1	VLAN1	active ge0 ge0
2	VLAN2	active ge1 ge2 ge3 ge1 ge2 ge3
823	VLAN823	active ge3 ge3
IBR58 #		

4.8.6 Confirm that the interfaces were correctly configured.

Prompt	Command	Remarks
IBR58 #	show ip interfaces	
<pre> 1: lo: <LOOPBACK,UP,LOWER_UP> mtu 16436 qdisc noqueue link/loopback 00:00:00:00:00:00 brd 00:00:00:00:00:00 inet 127.0.0.1/8 scope host lo 2: eth0: <BROADCAST,MULTICAST,UP,LOWER_UP> mtu 1500 qdisc pfifo_fast qlen 1000 link/ether 18:48:d8:00:00:49 brd ff:ff:ff:ff:ff:ff 3: danipc: <BROADCAST,MULTICAST,UP,LOWER_UP> mtu 1500 qdisc pfifo_fast qlen 1000 link/ether 00:24:86:00:00:00 brd ff:ff:ff:ff:ff:ff 4: eth0.1@eth0: <BROADCAST,MULTICAST,UP,LOWER_UP> mtu 1500 qdisc noqueue link/ether 18:48:d8:00:00:49 brd ff:ff:ff:ff:ff:ff inet 192.168.128.158/24 brd 192.168.128.255 scope global eth0.1 5: eth0.2@eth0: <BROADCAST,MULTICAST,UP,LOWER_UP> mtu 1500 qdisc noqueue link/ether 18:48:d8:00:00:49 brd ff:ff:ff:ff:ff:ff inet 10.22.12.201/16 brd 10.22.255.255 scope global eth0.2 6: eth0.823@eth0: <BROADCAST,MULTICAST,UP,LOWER_UP> mtu 1500 qdisc noqueue link/ether 18:48:d8:00:00:49 brd ff:ff:ff:ff:ff:ff inet 10.1.1.158/16 brd 10.1.255.255 scope global eth0.823 </pre>		
IBR58 #		

4.8.7 Reviewing the new configuration.

The configuration created in this section creates three distinct interfaces for use on the IBR.

- (a) eth0.1 is the management interface on VLAN1 (the default VLAN on IBR). VLAN1 has been assigned to GigabitEthernet port ge0 and given the IP address 10.21.12.211/16.

This interface is isolated from the other interfaces and can be used to access the IBR and manage the switch without allowing management traffic to traverse the RF link or go out onto the network.

- (b) eth0.2 is the data interface on VLAN 2, which has been assigned to GigabitEthernet ports ge1, ge2, and ge3.

Traffic on VLAN2 can be sent across the RF link and out onto the network. It allows all untagged traffic and traffic tagged with VLAN ID 2 to be sent to the network.

GigabitEthernet ports 1 and 2 are physical ports allowing connections to the provider network.

GigabitEthernet 3 is dedicated to the IBR RF link and creates a wireless bridge between two network segments.

- (c) eth0.823 is an isolated debug interface on VLAN 823.

VLAN823 will allow traffic only to be sent from one IBR to the other across the wireless link and requires that the sender be logged onto one of the IBRs.

One use of this interface is to allow a user to send ping packets to the opposite IBR to verify link integrity. This VLAN has no exposure to a physical network interface so traffic on this VLAN is isolated from the network.

4.9 Saving New Configuration

Use the following commands to save the new settings to the startup configuration file.

```
IBR58 (config)# copy running-config start-up config
```

4.10 Changing Host Name

Change the host name using the following command in Global Config mode.

```
IBR58 (config) # host name [newname]
```

4.11 Changing Passwords

The command for setting or changing a password has the following form:

```
IBR58 # enable password {level (1, 15)} [newpassword]
```

where “level” must either be the number 1 or the number 15 and *newpassword* must be a string of at least six and not more than sixteen characters and can include any letter, any numeral, and any of the following symbols: ! @ # \$ % .

- When level = 1, the password to enter User Mode will be affected.
- When level = 15, the password to enter Privileged Mode will be affected.

When no level option is entered, Privileged Mode will be affected.

4.12 Password Recovery

In the event that the Privileged Mode password is forgotten, the following procedure can be used to **reset all IBR settings to their default values**, thereby allowing a user to regain access to IBR. This procedure will boot IBR into a Linux root shell single-user mode where the user can change the Privileged Mode password.

- Initiate a system reboot and, within two (2) seconds, press *Ctrl C* to interrupt the reboot process. Enter the following command when the uMON> prompt is displayed:

```
uMON> run flash all
```

- IBR will take several minutes to reboot. When the Linux prompt is displayed, enter the command `passwd root` and then respond to the succeeding prompts to change the Privileged Mode password and reboot the system.
- When IBR reboots to CLI User Mode, use the default user name and password to log onto the system. Use the new Privilege Mode password to enter Privilege Mode.
- Then follow the standard procedure to change the User Mode Unser name and password.

*Note: To interrupt an ongoing reboot, enter the command *Ctrl C*.*

4.13 Setting System Clock

The command to set the IBR system clock is executed in Global Config mode and has the following form.

```
IBR58 (config) # clock set [hh:mm:ss] [YYYY-MM-DD]
```

where all of the arguments are integers.

4.14 Configuring IBR Name Server

The following command can be used to configure the Name server.

```
IBR58 (config)# ip name-server [ip-address]
```

4.15 Configuring IBR NTP Server

The following command can be used to configure the NTP server.

```
IBR58 (config)# ntp server [ip-address]
```

4.16 Configuring IBR SNMP Server

The following sequence of commands can be used to configure the SNMP server.

```
IBR58 (config) # snmp-server host [ip-address]
```

```
IBR58 (config) # snmp-server community [com-name]
```

```
IBR58 (config) # snmp-server group [grp-name]
```

```
IBR58 (config) # snmp-server view [vname]
```

Examples of configuring an SNMP Server are shown below.

Setting up an SNMPv2 Trap Server

Prompt	Command	Remarks
IBR58 (config) #	snmp-server community fastback rw	Use "fastback" or read/write
IBR58 (config) #	snmp-server host 10.0.0.1 traps version v2c	Traps SNMPv2
IBR58 (config) #	exit	Return to Global Config
IBR58 #	show snmp-server host	
Returns	Notification Host: 10.21.0.4 udp-port: 162 type: inform user: snmptraps security model: v2c	Notice the community string is not returned with the show command

Setting up a Default Gateway

Prompt	Command	Remarks
IBR58 (config) #	ip default-gateway 10.10.0.1	Config radio interface "0"
IBR58 (config) #	exit	Return to Global Config
IBR58 #	show ip route	
Returns	10.10.0.0/16 dev eth0.53 src 10.1.1.10 default via 10.10.0.1 dev eth0.1	Default gateway using VLAN 1

4.17 Setting Link ID

The command to set Link ID has the following syntax:

```
IBR58 (config) # link-id [linkname]
```

where *linkname* is an alphanumeric string from one to thirty-two characters in length that can contain any of the following symbols: ! @ # \$ % - _

Using Link ID Command

Prompt	Command	Remarks
IBR58 (config) #	interface radio 0	Config radio interface "0"
IBR58 (config-if-rad0) #	link-id 58\$a2	Sets link ID to "58\$a2"
IBR58 (config-if-rad0) #	exit	Return to Global Config

IBR58 (config) #		
------------------	--	--

4.18 Establishing A Radio Link

IBRs will automatically establish a link using the best frequencies to optimize data throughput.

[Return to Table of Contents](#)

5. MAC Address Table & Counters

IBR contains one table and twenty counters.

5.1 MAC Address Table

The MAC Address table, sometimes referred to as the L2 (or Layer 2) table, associates MAC addresses with their respective VLAN's and ports. L2 is the only table in IBR and cannot be deactivated.

When a packet is received by IBR, IBR automatically records the MAC address of the received packet and the port on which it was received. When an incoming packet arrives at IBR, the correct port and VLAN for delivery of the packet is determined by comparing the MAC address of the packet with the corresponding entry in L2. If the MAC address is not in L2, IBR will send the packet out to all ports except the one on which it was received, and then record the port and VLAN of the device that responds to the packet.

When a MAC address in the L2 table has not been used within a preset time (the "aging time"), that entry is automatically deleted from the table. The default aging time is three hundred (300) seconds; however, aging time is a user-configurable property. Aging time is the only property of L2 that can be changed. L2 can contain up to sixty-four thousand entries so that, with a reasonable aging time, there is little chance of an overflow condition.

Using the CLI "show" command, an operator can display the contents of L2.

5.2 Counters

Counters are implemented as two-dimensional arrays that associate traffic data with the corresponding IBR ports (interfaces). Counters are activated by default and cannot be disabled; however, the contents of counters can be reset to zero or displayed by operator command. Counters are identified by the names shown below.

- (a) *InBytes* Bytes received at a port
- (b) *InUcastPkts* -----Unicast packets received at a port
- (c) *InMcastPkts* Multicast packets received at a port
- (d) *InBcastPkts* -----Broadcast packets received at a port
- (e) *OutBytes* Bytes sent from a port
- (f) *OutUcastPkts* ----- Unicast packets sent from a port
- (g) *OutMcastPkts* Multicast packets sent from a port
- (h) *OutBcastPkts* -----Broadcast packets sent from a port
- (i) *CrcAlign-Err* Frames rcvd that don't have an even # of octets or have CRC errors
- (j) *Dropped-Bad-Pkts* --- Rcvd packets dropped for errors
- (k) *Collisions* Collisions before successful transmission
- (l) *Symbol-Err* ----- Symbol errors
- (m) *Undersize* Frames rcvd that are < 64 bytes
- (n) *Oversize* ----- Frames rcvd that are > 1514 bytes
- (o) *Fragments* Oversized packets sent as fragments
- (p) *Jabbers* ----- Frames longer than 1518 octets
- (q) *Single-Col* # of times only one collision occurred before successful xmsn

- (r) *Multi-Col* ----- # of times multiple collisions occurred before successful xmsn
 (s) *Late-Col* Collisions detected after > 512 bits sent
 (t) *Excess-Col* ----- Frames not sent due to excess # of retries
 (u) *Drops* TX queue drops
 (v) *Octets* ----- TX queue octets
 (w) *Packets* TX queue packets

[Return to Table of Contents](#)

6. Installing IBR

6.1 Installation Checklist

- A pretested and preconfigured IBR.
- A mounting bracket that is suitable for the intended location and mounting hardware.
- Access to a PoE+ source.
- Hand tools and materials as appropriate from the list below:
 - All Mounts:
 - Pole mount: Banding strap or hose clamp, maximum $\frac{3}{4}$ " strap width of appropriate length for the pole diameter.
 - Wall mount: 8mm or 5/16" diameter bolt appropriate for the mounting surface.
 - Articulating mount:
 - Torque wrench to tighten all connections to 10 ft-lbs.
 - 2 x 13mm open-ended wrench or sockets for the M8 mounting bolts.
 - 5mm Allen wrench for the socket button-head cap screws to attach the mount to the IBR.
 - Wall / Pole mount:
 - 4.5mm Allen wrench for the M6 socket button-head cap screw that connects the two parts of the mount together.
 - 5mm Allen wrench for the socket button-head cap screws to attach the mount to the IBR.
 - Ethernet connections:
 - 17mm open-ended wrench to tighten the weatherized Ethernet boot. See the section on Ethernet connectors for torque specifications.
 - RJ45 Ethernet termination tools.
 - Ethernet cables. The IBR has an integrated switch and can accept up to 3 individual Ethernet connections, though only one is absolutely required to pass data.
 - Serial connection (required for initial configuration):
 - USB-to-DB9 converter. Required if the PC used for configuration does not have a DB9 connector. Most PCs don't have a DB9 connector, so this is almost always required.
- A safe and suitable means of lifting the equipment and installer at the installation site. (NOTE: The mounting bracket for IBR has holes that can be used to suspend IBR from a utility belt or otherwise as an aid in lifting IBR.)
- Shielded Ethernet cable.
- A laptop with a USB-to-DB9 serial adapter for communicating with IBR via the serial port or Ethernet.

6.2 Safety Considerations

- Ensure that grounding is in accordance with local codes.
- Use lifting methods and/or equipment that are appropriate for the location; e.g., pole climbing equipment, ladder, power lift.
- Note the locations of other equipment, power lines, vehicle traffic, and other potential safety hazards at the installation site.

6.3 Mounting IBR

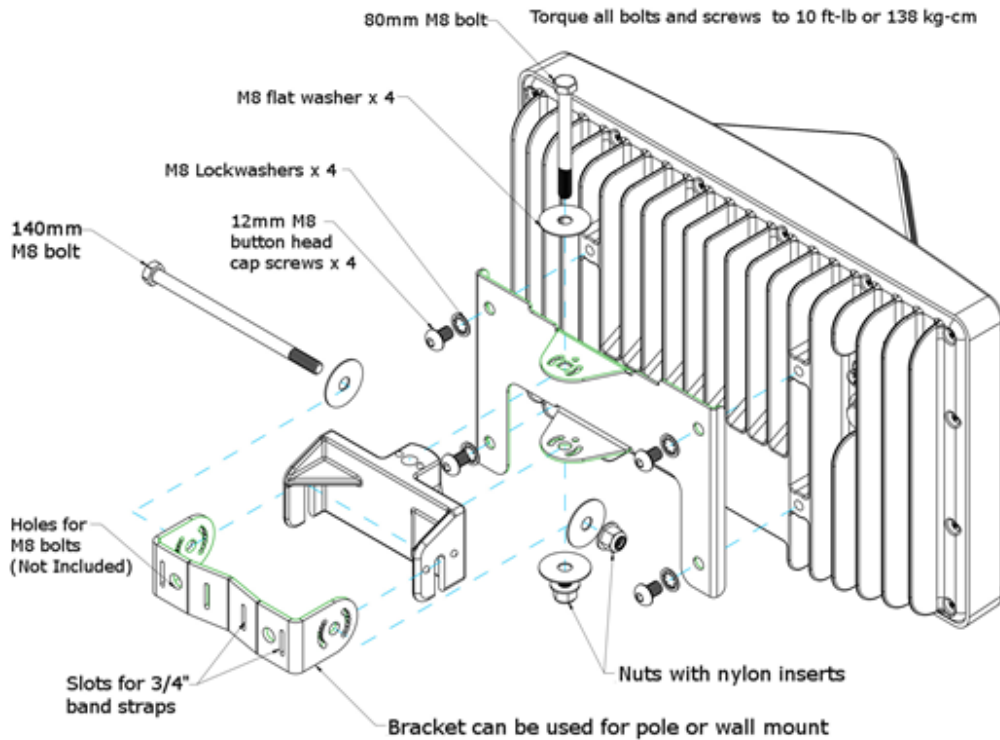
IBR must be mounted on a suitable bracket that will hold IBR securely under all environmental conditions. The base of IBR has four mounting posts for mounting bolts set in a square pattern. Operators have the option to use a mounting bracket purchased from Fastback Networks or to create custom mounting solutions.

Fastback offers two mounting bracket options, an articulating bracket and a fixed, or non-articulating, bracket, each of which can be mounted either on a wall or a pole. Guides for installing these brackets are shown below. Appendix A contains additional descriptions and images of the mounting brackets that are available from Fastback Networks.

6.3.1 *Mounting Location* - Choosing the best possible mounting location for IBR is important for safety, security, and link performance.

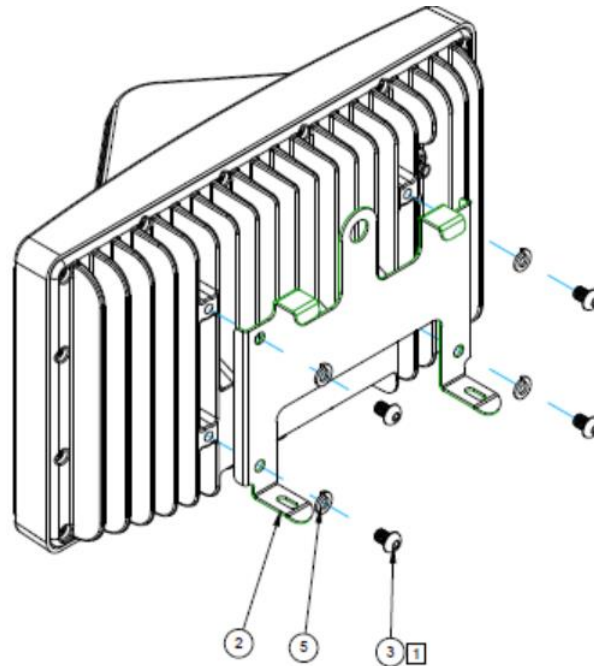
- Install IBR in a location where access is restricted to authorized service personnel.
- For best performance, IBR should be mounted so that it is within + five degrees of level (horizontal plane) and + five degrees of plumb (vertical plane).
- Select a location that is near to IBR's required interconnect point and PoE+ source;
- Avoid areas that are subject to vibration, heat, RF emissions, or other such disturbances from nearby equipment;
- Locate and orient IBR as near as possible to obtain line-of-sight to the distant IBR;
- Avoid locations that might present hazards to installation or maintenance crews.

6.3.2 *Fastback Networks' Articulating Bracket* - The articulating bracket has the advantage that it can be rotated in both horizontal and vertical planes, even when affixed to a wall. The diagram below is a guide for assembling the articulating mount and attaching it to IBR.

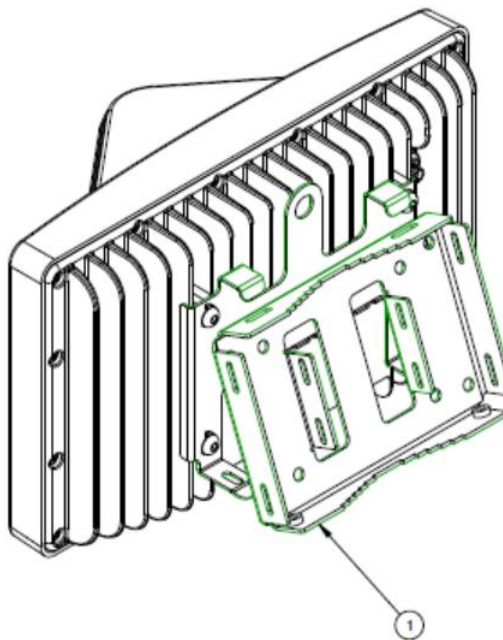


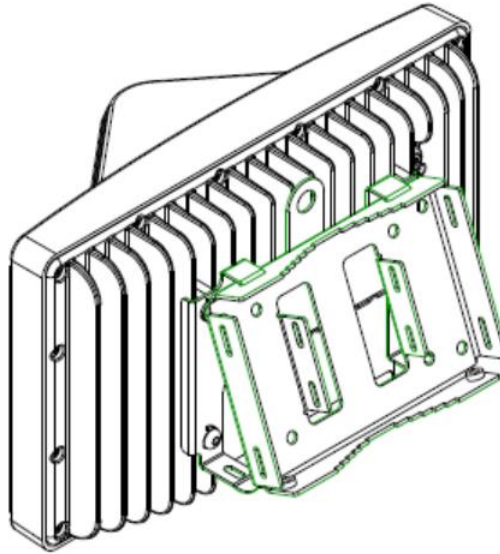
6.3.3 *Fixed or Non-articulating Bracket* – The fixed bracket can be rotated in the horizontal plane when mounted to a pole, but cannot be rotated in any direction when mounted on a wall. The following diagrams are a guide for assembling the non-articulating mount and attaching it to IBR.

- (1) Attach the IBR plate to IBR as shown below. Screws # 3 should be torqued to a maximum of 10 ft-lbs (138 kgf-cm).

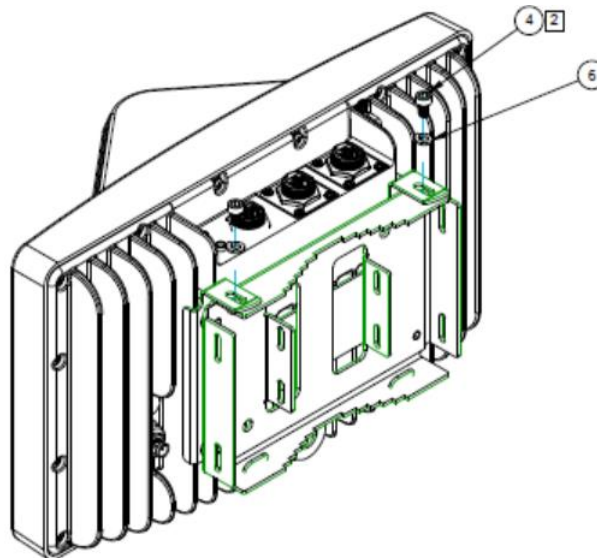


- (2) Attach the pole bracket to the plate on IBR using the hooks as shown in the next two diagrams. NOTE: If IBR will be attached to a wall, the pole bracket should be turned so that the pole side faces IBR and the flat side faces outward.





(3) Use screws to secure the two plates together as shown below. Screws #4 should be torqued to a maximum of 5 ft-lbs (69 kgf-cm). (NOTE: IBR is shown inverted from the way it should be mounted.)



(4) Materials provided with this mount are shown in the table below.

ITEM #	QTY	PART #	DESCRIPTION
1	1	430-00014	Bracket, IBR Pole/Wall Mount, Wall Plate
2	1	430-00016	Bracket, IBR Pole/Wall Mount, IBR Plate
3	4	470-00007	Screw, M8x1.25mm, SS, Button Head
4	2	470-00008	Screw, M6x10, SS, SHCS
5	4	495-00001	Washer, M8, SS, Split Lock
6	2	495-00002	Washer, M6, SS, Split Lock

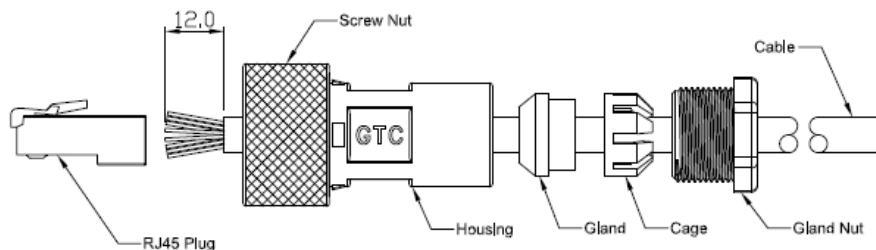
6.4 Connecting Power & Ethernet

When IBR has been securely mounted, connect a PoE+ source to Port 0. The power indicator LED will turn green when power is applied. If the PoE+ source is also connected to an Ethernet source, data will flow through IBR's Ethernet Port 0.

If the power indicator LED does not illuminate when the power connection is made, consider the following:

- Is the PoE connection secure?
- Is the power source receptacle hot?
- Are the cables of the proper type (CAT5E or CAT6)?
- Are the cables in good working order? (Cables should be certified.)
- Is the power brick good?
- Is the IBR working properly?

The RJ-45 Ethernet connectors on IBR will mate with the GT225360-00 connector from GT Contact Co. LTD. An exploded view of the connector is shown below.



The connector will work with CAT5E and CAT6 cables and other cables having an outer diameter between 5.0 and 6.0 mm. NOTE: Use only weatherproof, shielded cable.

To assemble the connector:

- Strip the cable jacket 12.0 mm.
- Thread the cable through the connector components in the order shown.
- Insert the cable strands into the RJ-45 plug until tight.
- Assemble the connector, tightening the gland nut to within 9.0 – 10.0 kgf-cm².

Three (3) Ethernet connectors ship with each IBR. Additional connectors may be obtained from Fastback or directly from the manufacturer:

Model: GT225360-00

Supplier: GT Contact Co. LTD.

6.5 Connecting The Serial Port (Optional)

A local operator can communicate with IBR by connecting a suitable device to the four-pin serial console connector on back of IBR. (See the section titled "Serial Console".)

A local operator can configure IBR by connecting the Fastback-supplied serial cable to a PC with a DB-9 RS-232 connection. If such a connection is not available, a USB-to-serial converter may be used.

NOTE: When the serial port is not in use, a weatherproof protective cover should be installed over the serial connector on IBR.

6.6 Establishing A Link

Except in the most severe cases of in-band interference, a pair of IBR's will automatically select the best combination of channel frequencies and bandwidth for a link.

- (a) Wait for radios to finish booting and establishing a link.
- (b) Use the CLI command shown below to verify that a link has been established.

```
IBR58 (config) # show interfaces radio 0 status
```

If a link is not automatically established within ten minutes, then consider the following troubleshooting suggestions:

- Check to ensure that the other IBR on the link is operational.
- Change the direction in which the IBR is pointed.
- Change the IBR's elevation.
- Determine if the link is too long for the environment.

6.7 IAS - Link Interference Analysis

IAS is a tool that IBR uses to analyze interference levels in receive channels and to select a combination of channels and bandwidths that maximize throughput while minimizing the effects of interference. The operator can display IAS data by executing the following command.

```
IBR58 # show interface radio 0 ias
```

This command will return a table of data that shows the interference level in each receive channel as received by each internal IBR antenna. The table below shows a partial output for a 5.8 GHz radio (receives at 5.3 GHz).

	ANT1	ANT2	ANT3	ANT4	ANT5	ANT6	ANT7	ANT8
Ch-5250:	-90	-90	-91	-89	-88	-89	-88	-89
Ch-5251:	-90	-90	-91	-89	-88	-89	-88	-89
Ch-5252:	-89	-89	-88	-88	-87	-87	-85	-85
Ch-5253:	-85	-86	-83	-84	-82	-82	-79	-79

[Return to Table of Contents](#)

7. Features & Functionality

7.1 Communication Protocols

IBR can be managed by an operator using:

- CLI: SSH, Telnet, Serial Console
- SNMP

7.2 Software Management

- Software upgrades to IBR can be made by an operator.
- Boot loader recovery can be accomplished by an operator via CLI.
- IBR has the ability to recover on its own from a failed software upgrade.

7.3 SNMP

IBR supports SNMP⁹ agents using protocols v1 and v2c.

⁹ Simple Network Management Protocol

The SNMP agent will support MIB-II (RFC 1213), IF-MIB¹⁰(RFC 2863), and a Fastback enterprise MIB. Detailed information for configuring SNMP is contained in the *CLI Guide*. IBR sends traps supported by Fastback MIB, DISMAN-EVENT-MIB, and NET-SNMP-MIB. SNMP polling for traps takes up to sixty (60) seconds.

7.4 Switching & Transport

IBR supports 802.1Q (VLAN).

7.5 Data Handling

IBR supports the following OSI¹¹ Layer 2 standards:

- IEEE 802.3ab (Gigabit Ethernet);
- IEEE 802.3as (frame expansion);
- IEEE 802.1Q (VLANs).

In addition, IBR supports port mirroring to monitor port traffic.

7.6 Carrier Ethernet

IBR conforms to the following MEF¹² specifications:

- MEF 9 – Abstract Test Suite for Ethernet Services at the UNI
- MEF 14 – Abstract Test Suite for Traffic Management Phase 1
- MEF 19 – Abstract Test Suite for UNI Type 1

7.7 Timing & Synchronization

IBR's system clock starts when IBR is powered up and maintains time and date based on Universal Time Coordinated (UTC), also known as Greenwich Mean Time (GMT). The system clock can be set over the network via NTP.

Detailed instructions for configuring IBR timing and for displaying system time and date are contained in the *CLI Guide*.

7.8 Network Time Protocol (NTP)

NTP runs over User Datagram Protocol (UDP), which runs over IP. It is very efficient and typically requires no more than one NTP packet per minute to synchronize IBR's system clock to within one millisecond of the NTP server's clock.

When IBR is configured to receive NTP packets from another network device, the relationship between IBR and that device is called an "association" and it is a server relationship, meaning that IBR will synchronize to the other device (the "server") and the other device will not synchronize to IBR.

By default, NTP is disabled on IBR, no NTP associations are defined, and the NTP daemon is not running. Procedures for enabling and configuring NTP are contained in the *CLI Guide*.

When IBR is running NTP, IBR can be associated with more than one NTP server. Normally, IBR will synchronize to the associated NTP server that has the lowest stratum number; that is the lowest number of hops between the server and its clock source. A stratum 1 time server has a radio or atomic clock directly attached, a stratum 2 time server receives its time through NTP from a stratum 1 time server, etc.

¹⁰ MIB refers to Management Information Base, of which there are several versions

¹¹ Open Systems Interconnection

¹² Metro Ethernet Forum

IBR will avoid synchronizing to a server whose time might not have been synchronized or to one whose time is significantly different than the time from other associated servers, even if its stratum is lower.

When NTP is enabled on IBR, NTP time will take precedence over time provided by any other source or method.

7.9 System Message Logging

IBR sends the output of system messages and certain Privileged commands to a logging process that can be configured to distribute such messages to a logging file, remote syslog server, or operator's console. Detailed instructions for configuring message logging are contained in the *CLI Guide*.

7.10 Quality of Service (QoS) & Class of Service (CoS)

IBR supports QoS packet prioritization in compliance with IEEE 802.p. By default, QoS is disabled and must be configured and enabled by an operator using the commands and procedures described in this section.

IBR's CLI has commands that allow an operator to create and configure Traffic Classes and Traffic Policies that are associated with specified IBR interfaces. The CLI Guide contains detailed information for configuring QoS/CoS features.

7.11 Security

Security features of IBR include:

- AES encryption on over-the-air links;
- Access control lists;
- Multicast and broadcast storm control;
- Port protection and blocking

7.12 Electromagnetic Interference ("EMI") Abatement

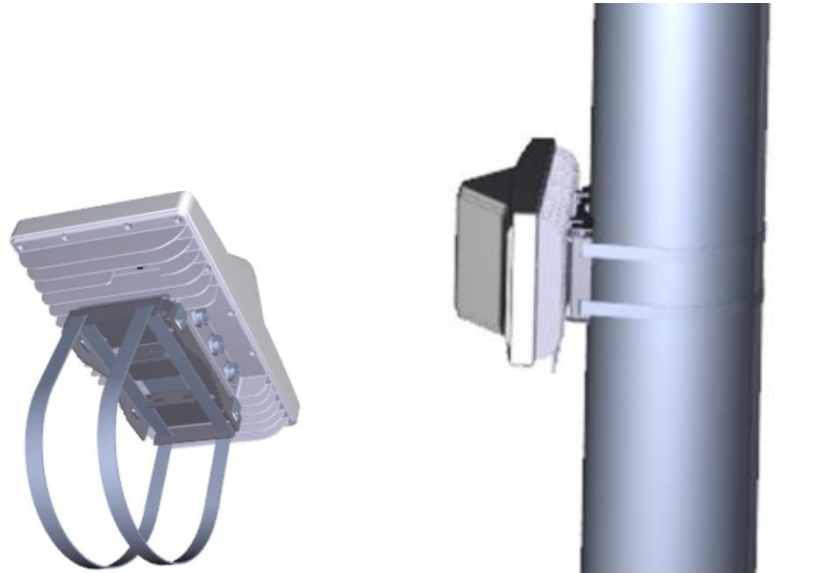
IBR is compliant with and certified to the applicable portions of the FCC Part 15 class B (EMI).

[Return to Table of Contents](#)

Appendix A – IBR Mounting Brackets

A 1. Wall/Pole Mounting Bracket

Fastback Networks' wall/pole mounting bracket assembly can be used to mount IBR on poles, on the sides of buildings, or in other outdoor locations. The first illustration below shows a fully assembled bracket with pole straps attached to IBR, and the second illustration shows IBR mounted on a mast using the same bracket.



1.1. Ordering Information

The Wall/Pole Mounting Bracket Assembly consists of the following components:

- IBR mounting plate
- Four M8x12 bolts for attaching IBR to mounting plate
- Wall/Pole mounting plate
- Two M6x10 bolts for attaching the two plates to one another

1.2. IBR Mounting Plate

The plate shown below attaches directly to the mounting lugs on IBR. This plate should be firmly mounted to IBR before IBR is raised to its mounting location. Four bolts, size M8 x12, with lock washers are required to mount this bracket to IBR.

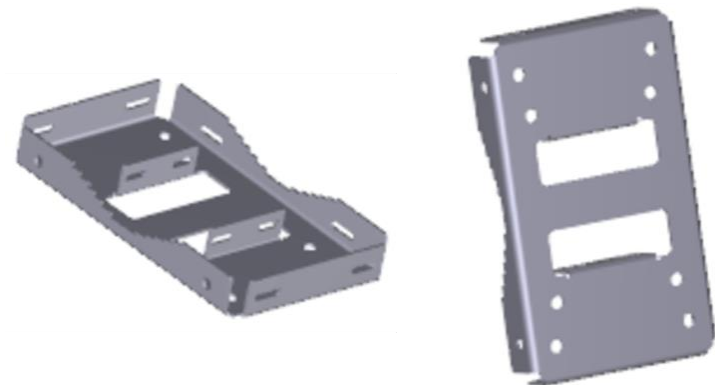
The raised edges on the top side of the plate mate with the heat sinks on IBR. The plate attaches to the wall/pole plate via hooks on one side and two bolts, size M6x10, with lock washers on the other side.



1.3. Wall/Pole Plate

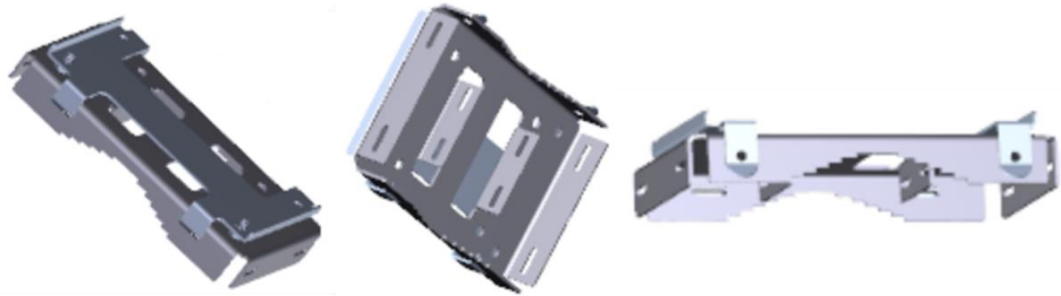
The plate shown below attaches to the IBR mounting plate for mounting IBR on a pole or mast that is between one and six inches in diameter, or on a wall or other structure.

When IBR will be mounted on a wall, the flat side of this plate will be against the wall. When IBR will be mounted on a mast, the flat side of this plate will be against the IBR mounting plate.



1.4. How The Plates Attach To One Another

The illustrations below show how two plates attach to one another in a pole mount configuration.

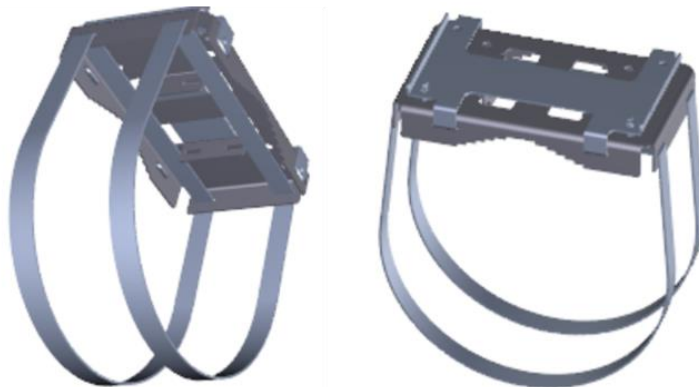


1.5. Pole mounting straps

Mounting IBR on a pole or mast simply requires attaching pole bands to the bracket as shown below. Be careful to not damage the bracket when tightening the bands.

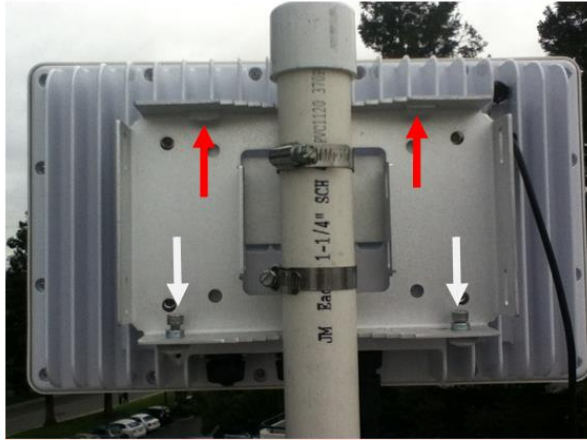
Pole straps can be attached either to the ends of the plate or to the flanges in the center of the plate as appropriate for the diameter of the mast to which it is being attached.

Pole bands are not included. The bracket will accept steel bands up to 3/4" wide.



1.6. Mounting Instructions

When the mounting plate has been affixed to IBR and the wall/pole plate has been mounted in its permanent location, the last step is to hang the IBR onto the mounting plate by first inserting the tabs on the top of the IBR mounting plate into the slots at the top of the wall/pole plate shown by the red arrows in the figure below. Finally, mate the two plates together and secure using two M6x10 bolts shown by the white arrows in the figure below.

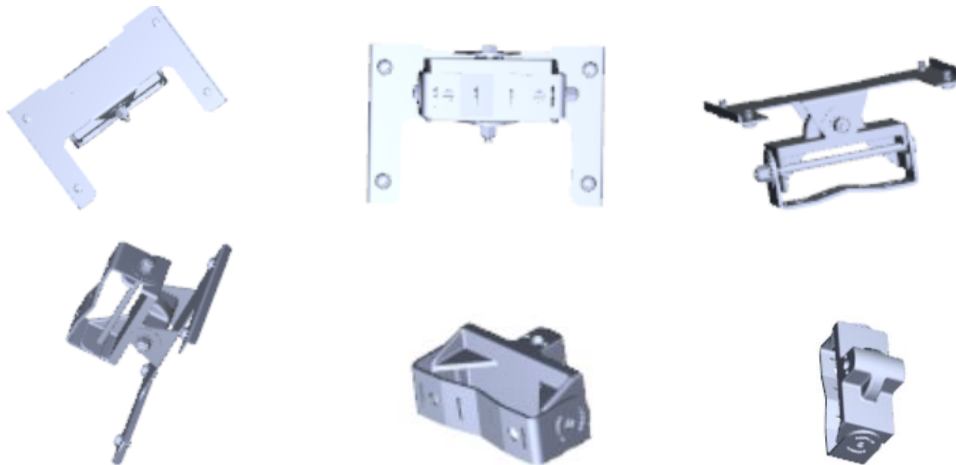


The installer can attach a rope or hook to one of the holes on the side of the mounting bracket in order to hang IBR on a utility belt until it is time to attach it to the bracket. To aid in hanging IBR, the plate on IBR can be hooked onto the mating wall/pole plate while the two M6x10 mounting bolts are being tightened. An Allen wrench is needed to tighten the bolts.

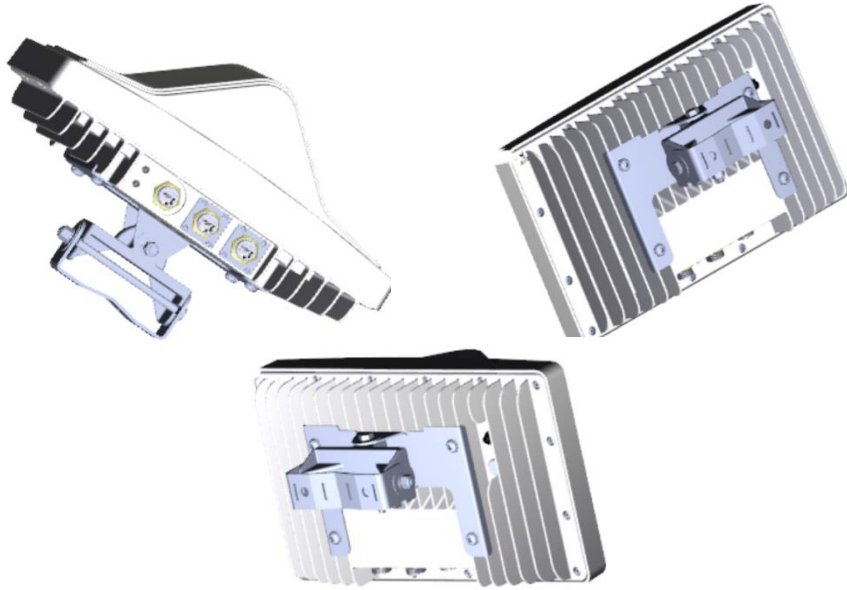
A 2. Articulating Mount

Fastback Networks offers an articulating mount that be mounted on walls or masts and which can be adjusted up to ± 45 degrees in elevation and azimuth in 15 degree increments. Like the Wall/Pole Mount, the Articulating Mount has a plate that attaches to IBR and a part that attaches to the wall or mast. An articulating knuckle provides the freedom of movement.

The images below show the Articulating Mount and its components from several angles.



The images below show the Articulating Mount attached to IBR.



[Return to Table of Contents](#)