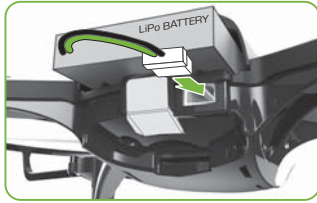


### GPS DRONE

GPS enabled flight is intended for **outdoor use only**. Attempting to fly indoors may result in erratic behavior.

#### POWERING UP AND PAIRING REMOTE



Insert fully charged LiPo battery.



Place the drone on level surface with a clear view of the sky.



Turn on controller. Once paired with the drone, **RED SEARCH LED** will blink while acquiring GPS signal.



Once **GREEN LOCK LED** turns on solid, the drone is ready to fly.

#### FLIGHT CONTROLS

##### THROTTLE STICK

##### DIRECTIONAL STICK

##### LAUNCH/LAND BUTTON

PRESS TO LAUNCH    PRESS TO LAND

##### RETURN TO HOME

With a simple press of a button, you can tell your drone to fly itself back to its original launch point without any further input.

*Note: If for any reason you need to immediately stop the drone, press the Power button to initiate an emergency disarm, cutting power to the motors.*

#### FLIGHT BASICS

To make flying easier, place the drone in front of you with the drone facing away from you (green blades forward). You should be facing the same way the drone is facing.

Press **LAUNCH** to automatically launch a few feet off the ground.

Move **Throttle** thumbstick up or down to make drone fly higher or lower and left or right to rotate.

Use **Directional** thumbstick to fly forward, backward, left or right.

Press **LAND** to automatically land.

You can also manually land the drone by holding throttle in the down position to descend. Continue holding down once the drone reaches the ground. When the drone recognizes it has landed, the controller will play two beeps and the propellers will stop spinning.

#### FLIGHT MODES

##### NORMAL mode

is best for new pilots or those who want a casual flying experience. In **NORMAL** mode, the drone reacts smoothly to the pilot's input for easy control.

##### SPORT mode

allows for experienced pilots to perform more aggressive maneuvers. The drone's response rate to pilot input is much higher for sharper turns and more speed.

- **MODES** can be customized in the **SKY VIPER VIDEO VIEWER 2.0** app
- **POSITION HOLD** is active in both **NORMAL** and **SPORT** modes. Simply let go of the control sticks and the GPS Auto-Pilot will keep the drone in a steady hover and will not drift away.

#### RETURN TO HOME

- Once the drone has **GPS LOCK**, its **HOME** is set to its current location when you launch.
- With a simple press of a button, you can tell your drone to fly itself back to its original launch point without any further input.
- During this return flight, you will still have altitude and direction control to avoid obstacles.
- Pressing the Home button during this return flight will cancel it and put the drone in its previous flight mode.
- When using the **Sky Viper Video Viewer 2.0** app, you can return to your device's GPS location instead.

#### FOLLOW ME MODE

With **Sky Viper Video Viewer 2.0** app, you can enable **Follow Me** mode, in which the drone will maintain a set distance from your device's GPS location. See app for more details and safety precautions.

**CAUTION :** **Return to Home** and **Follow Me** modes do not have object avoidance detection. Use safety precautions when flying near trees, buildings, people or animals. Do not use while in a vehicle, on a skateboard/scooter/hoverboard or riding a bicycle. Read all enclosed information before operating.

#### STREAMING AND RECORDING VIDEO

##### DOWNLOAD THE SKY VIPER VIDEO VIEWER 2.0 APP FROM THE APP STORE OR GOOGLE PLAY.

- Open your device's WiFi setting and select the network starting with **SKYVIPER\_**
- Default WiFi password : skyviper
- Open the **SkyViper Video Viewer 2.0** app.
- To reset drone WiFi password to the default, plug battery into drone and place upside-down on a flat surface, turn on controller and wait for them to pair, hold both video & stunt buttons for 5 seconds until you hear a beep from the controller and the drone's LEDs flash.

##### RECORDING HIGHER QUALITY VIDEO TO MICRO SD CARD (MICRO SD CARD NOT INCLUDED)

Inserting a microSD card into the drone allows you to record and playback video at a much higher frame rate and viewing quality, also eliminating loss of video quality when flying at longer ranges. Supports microSD cards up to 32GB and recommend Class 6 or higher for best quality.

#### ONE TOUCH STUNTS

##### BARREL ROLL LEFT OR RIGHT

While flying forward (or reverse), tap the **STUNT** button.

##### FLIP IN 4 DIRECTIONS

While hovering, hold the **STUNT** button and tap the directional stick in the direction you want the drone to flip.

**CAUTION!**  
The drone should be flying at least 10 feet in the air with a minimum clearance of 10 feet in all directions before attempting stunt functions.

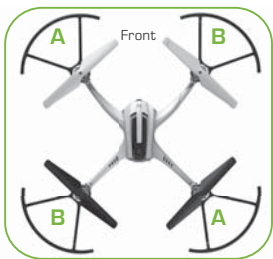
#### ADJUSTABLE CAMERA ANGLE

The drone camera angle is adjustable to suit your preference. Point forward for recording flying action, straight down for aerial photos.

(Remove protective film from lens before use.)

### REPLACING DAMAGED BLADES

Use the included screwdriver to unscrew the propeller, then pull up on propeller to detach. Match A propellers to A legs and B propellers to B legs. Replace screws and tighten.



### CONTENTS

- GPS Drone
- USB Charging Cable
- Rechargeable 3.7V 1200 mAh LiPo Battery
- Controller
- Phone Mount
- 4 Replacement Blades
- 4 Blade Guards
- Screwdriver & Extra Screws

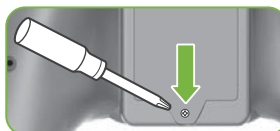
### REPLACEMENT BATTERY AVAILABLE

Increase your flying time with an additional battery!

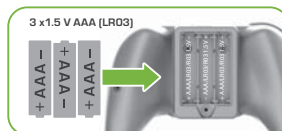
Details of how to purchase additional or replacement battery packs available at SKYVIPER.COM

#01846

### INSTALLING BATTERIES IN THE CONTROLLER



\*Screwdriver not included.



\*Batteries not included.

### CONNECTING BATTERY



Open the battery latch (Press back of latch and lift up)



Insert battery

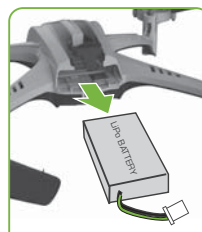


Close the battery latch

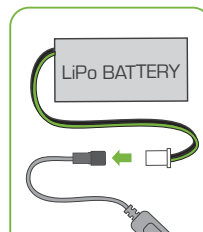


Connect the battery

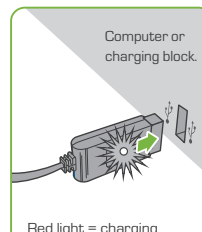
### CHARGING THE LiPo BATTERY



Remove LiPo battery from compartment and unplug cable



Plug battery into USB charging cable



Computer or charging block.  
Red light = charging  
Green light = fully charged

#### CHARGING PRECAUTIONS:

- After use, allow battery to cool down to room temperature before charging again.
- Charge battery in an isolated area, away from excessive heat or moisture.
- If you suspect that the battery is damaged or swelling, discard the battery in accordance with your country's recycling laws.
- Do not modify, heat, or wet the battery in any way. Only recharge with provided charger.

### FAILSAFE GUIDE

- When the drone turns upside down, the motors will stop spinning.
- When the drone goes out of range of the controller, it will begin to return to its home location. If the controller reconnects, press Home button to cancel the return.
- When the drone's battery is low, the LEDs on the drone will begin to blink rapidly, and a tone is played continuously on the controller. The drone will begin to return to its home location. Press Home button to cancel.
- When the drone's battery is depleted, the drone will automatically land itself in its current position. This automatic landing cannot be interrupted with the controller.
- When the propeller is jammed or blocked by an obstacle switch off the controller immediately to prevent possible or further damage.

This device complies with PART 15 of the FCC Rules. Operation is subject to the following two conditions. (1) This device may not cause harmful interference, and (2) this device must accept any interference received, including interference that may cause undesired operation. CAUTION: Changes or modifications to this unit not expressly approved by the party responsible for compliance could void the user's authority to operate the equipment.

NOTE: This equipment has been tested and found to comply with the limits for a Class B digital device, pursuant to Part 15 of the FCC Rules. These limits are designed to provide reasonable protection against harmful interference in a residential installation. This equipment generates, uses and can radiate radio frequency energy and, if not installed and used in accordance with the instructions, may cause harmful interference to radio communications. However, there is no guarantee that interference will not occur in a particular installation. If this equipment does cause harmful interference to radio or television reception, which can be determined by turning the equipment off and on, the user is encouraged to try to correct the interference by one or more of the following measures: Reorient or relocate the receiving antenna - Increase the separation between the equipment and receiver - Connect the equipment into an outlet on a circuit different from that to which the receiver is connected - Consult the dealer or an experienced radio/TV technician for help.

This equipment complies with FCC radiation exposure limits set forth for an uncontrolled environment. This transmitter must not be co-located or operating in conjunction with any other antenna or transmitter. For Drone - This equipment should be installed and operated with minimum distance 20cm between the radiator & your body.

Remove all packaging attachments before giving the toy to a child.  
Not suitable for children under 3 years due to small parts that could be swallowed.  
Conforms to product safety standards ASTM F963.  
Keep instructions for future reference. Do not discard.



©2018 Skyrocket LLC, Los Angeles CA 90066 USA. All Rights Reserved. Sky Viper and Skyrocket and their respective logos are trademarks and/or registered trademarks of Skyrocket Toys LLC. All other trademarks, logos and copyrights are the property of their respective owners, and there is no relationship express or implied with Skyrocket Toys LLC.

MADE IN CHINA.

### SKYROCKET

Google Play and the Google Play logo are trademarks of Google Inc. Apple and the Apple logo are trademarks of Apple Inc., registered in the U.S. and other countries. App Store is a service mark of Apple Inc., registered in the U.S. and other countries.

The software included in this product contains copyrighted software that is licensed under the GPLv3. A copy of that license is included in our website at the URL below. You may obtain the complete Corresponding Source code from us for a period of three years after our last shipment of this product and/or spare parts therefor, which will be no earlier than 05-01-2021, on our website at <http://www.skyviper.com/opensource>

### WE'RE HERE TO HELP

For questions about this product:  
Online: [skyviper.com/support](http://skyviper.com/support)  
Email: [support@skyrockettoys.com](mailto:support@skyrockettoys.com)  
Phone: 1-888-674-5650  
M-F 9am to 6pm PST

### ADULT SUPERVISION REQUIRED

Before each use, an adult should check this product and the LiPo battery to ensure no damage or hazards exist. Drone has rotating blades that move at high speed, posing danger of damage and injury. Use of included blade guards strongly recommended. Pilots are responsible for any actions that result in damage or injury from the improper operation of drone. Adequate flying space is required. Avoid flying near interior fans and/or vents as they may make flying difficult to control. Keep a safe distance away from streets, public thoroughfares and power lines. Never attempt to retrieve drone from any location higher than your reach (such as rooftops or trees) or from any location that poses a safety hazard. Never fly drone at night. Keep drone in sight at all times during operation. Discontinue operation immediately if drone flies out of your field of view. Do not fly near spectators or animals. Keep spinning rotors away from fingers, hair, eyes and other body parts. Always launch from a flat surface. Never leave drone unattended while it is turned on. Return to Home and Follow Me modes do not have object avoidance detection. Use safety precautions when flying near trees, buildings, people or animals. Do not use while in a vehicle, on a skateboard/scooter/hoverboard or riding a bicycle. Read all enclosed information before operating.

### THIS PRODUCT CONTAINS A LITHIUM-POLYMER BATTERY 3.7V 1200mAh:

LiPo batteries have a severe risk of fire and injury if they are improperly handled or misused. They may explode, overheat or ignite. Read all following precautions and instructions regarding the care and use of LiPo batteries.

The LiPo battery is only to be used with the drone and charger included with this product.

- Keep away from flammable materials.
- Do not expose to direct sunlight.
- Do not place in fire or leave in hot places.
- Do not drop or make subject to strong impact.
- Keep dry and away from water.
- Remove exhausted battery as soon as possible and discard properly.
- Remove battery from the compartment if toy is not used for a long period of time.
- The supply terminals are not to be short circuited.
- Never throw battery in a fire or attempt to open outer casing.
- Do not leave battery connected to drone when not in use.
- Do not stress, press or drop the battery.
- Never charge battery unattended. When charging battery you should always remain in constant observation to monitor the charging process and react to potential problems that may occur.
- Disconnect with the charging wire if the battery is fully charged.
- Never store or charge battery inside the car in extreme temperatures, since extreme temperature could ignite fire.
- Use caution to avoid puncture of the battery. Puncture of battery may cause a fire.

LiPo Battery Disposal: LiPo batteries must be recycled or disposed of properly. They should not be disposed of with other household waste. Check your local laws and regulations for correct recycling and/or battery disposal.

### AAA BATTERY CAUTIONS

- Do not use rechargeable batteries.
- Non-rechargeable batteries are not to be recharged.
- Do not mix old and new batteries and Do not mix alkaline, standard (carbon-zinc) or rechargeable (ni-cad, ni-mh, etc.) batteries.
- Batteries are to be inserted using correct polarity.
- Remove exhausted batteries as soon as possible and discard properly.
- Remove all batteries from compartment if toy is not used for a long period of time.
- The supply terminals are not to be short circuited.
- Batteries should be replaced by an adult.
- Never throw batteries in a fire or attempt to open the outer casing.

**WARNING:** Batteries are harmful if swallowed. Please keep away from children.

Battery Disposal: Dispose of batteries according to the local laws and regulations of your region. Some batteries may be recycled, and may be accepted for disposal at your local recycling center. If you are not able to identify the applicable rules in your area, please check the instructions of the battery manufacturer.

## ISED RSS warning

This device complies with ISED licence-exempt RSS standard (s). Operation is subject to the following two conditions: (1) this device may not cause interference, and (2) this device must accept any interference, including interference that may cause undesired operation of the device.

Under ISED regulations, this radio transmitter may only operate using an antenna of a type and maximum (or lesser) gain approved for the transmitter by ISED. To reduce potential radio interference to other users, the antenna type and its gain should be so chosen that, the equivalent isotropically radiated power (e.i.r.p.) is not more than that necessary for successful communication.

### ISED Radiation Exposure Statement:

This equipment complies with ISED RF radiation exposure limits set forth for an uncontrolled environment. This transmitter must not be co-located or operating in conjunction with any other antenna or transmitter.

For Quadcopter: This equipment should be installed and operated with minimum distance 20cm between the radiator & your body.

Le présent appareil est conforme aux CNR d'ISED applicables aux appareils radio exempts de licence.

L'exploitation est autorisée aux deux conditions suivantes:

- (1) l'appareil ne doit pas produire de brouillage, et
- (2) l'utilisateur de l'appareil doit accepter tout brouillage radioélectrique subi, même si le brouillage est susceptible d'en compromettre le fonctionnement.

Conformément à la réglementation ISED, le présent émetteur radio peut fonctionner avec une antenne d'un type et d'un gain maximal (ou inférieur) approuvé pour l'émetteur par ISED. Dans le but de réduire les risques de brouillage radioélectrique à l'intention des autres utilisateurs, il faut choisir le type d'antenne et son gain de sorte que la puissance isotrope rayonnée équivalente (p.i.r.e.) ne dépasse pas l'intensité nécessaire à l'établissement d'une communication satisfaisante.

### ISED exposition aux radiations:

Cet équipement est conforme avec ISED les limites d'exposition aux rayonnements définies pour un contrôlé environnement.

Cet émetteur ne doit pas être co-localisés ou fonctionner en conjonction avec une autre antenne ou émetteur.

Cet équipement doit être installé et utilisé avec un minimum de 20cm de distance entre le radiateur et votre corps.