

BACK

FRONT



### 100% SAFE A.I. CONTENT

We are Committed to keeping kids safe, Poe only uses A.I. with robust built-in family content monitoring. As an additional layer of protection, our Play Safe technology limits the ideas that can be shared with the A.I. one the form of predefined family friendly icons. No personal information is gathered, no inappropriate themes or content ever exchanged. Every story you create with Poe is 100% fun, safe and secure.



#### ALKALINE BATTERY CAUTIONS

- Do not use rechargeable batteries.
- Non-rechargeable batteries are not to be recharged.
- Different types of batteries or new and old batteries are not to be mixed.
- Batteries are to be inserted using correct polarity (+ and -).
- Remove exhausted batteries as soon as possible and discard properly.
- Remove all batteries from compartment if toy is not used for a long period.
- The supply terminals are not to be short-circuited.
- Never throw batteries in a fire or attempt to open the outer casing.

Remove all packaging attachments before giving the toy to a child. Conforms to product safety standards ASTM F963. Keep instructions for future reference. Do not discard. Product and colors may vary from those shown.

**WARNING:** This toy produces flash that may trigger epilepsy in sensitized individuals.

Batteries are harmful if swallowed. Please keep away from children.

**Battery Disposal:** Dispose of batteries according to the local laws and regulations of your region. Some batteries may be recycled, and may be accepted for disposal at your local recycling center. If you are not able to identify the applicable rules in your area, please check the instructions of the battery manufacturer.

This device complies with PART 15 of the FCC Rules. Operation is subject to the following two conditions. (1) This device may not cause harmful interference, and (2) this device must accept any interference received, including interference that may cause undesired operation. CAUTION: Changes or modifications to this unit not expressly approved by the party responsible for compliance could void the user's authority to operate the equipment. NOTE: This equipment has been tested and found to comply with the limits for a Class B digital device, pursuant to Part 15 of the FCC Rules. These limits are designed to provide reasonable protection against harmful interference in a residential installation. This equipment generates, uses and can radiate radio frequency energy and, if not installed and used in accordance with the instructions, may cause harmful interference to radio communications. However, there is no guarantee that interference will not occur in a particular installation. If this equipment does cause harmful interference to radio or television reception, which can be determined by turning the equipment off and on, the user is encouraged to try to correct the interference by one or more of the following measures: Reorient or relocate the receiving antenna - Increase the separation between the equipment and receiver - Connect the equipment into an outlet on a circuit different from that to which the receiver is connected - Consult the dealer or an experienced radio/TV technician for help.

When using multiple Bluetooth Trademarks:

\*The Bluetooth® word mark and logos are registered trademarks owned by Bluetooth SIG, Inc. The Auracast™ word mark and logos are trademarks owned by Bluetooth SIG, Inc. Any use of such marks by [licensee name] is under license. Other trademarks and trade names are those of their respective owners.\*

©2024 Skyrocket LLC, Los Angeles, CA 90292 USA. All Rights Reserved. PlayAi, Skyrocket, and their respective logos are trademarks and/or registered trademarks of Skyrocket LLC. All other trademarks, logos and copyrights are the property of their respective owners, and there is no relationship express or implied with Skyrocket LLC. MADE IN CHINA.

Stuffing information: ALL NEW MATERIAL • POLYESTER FIBER • REG NO. PA-100453(CN)  
Model no: 18723 FCC ID: O5318723



18723\_US\_G1

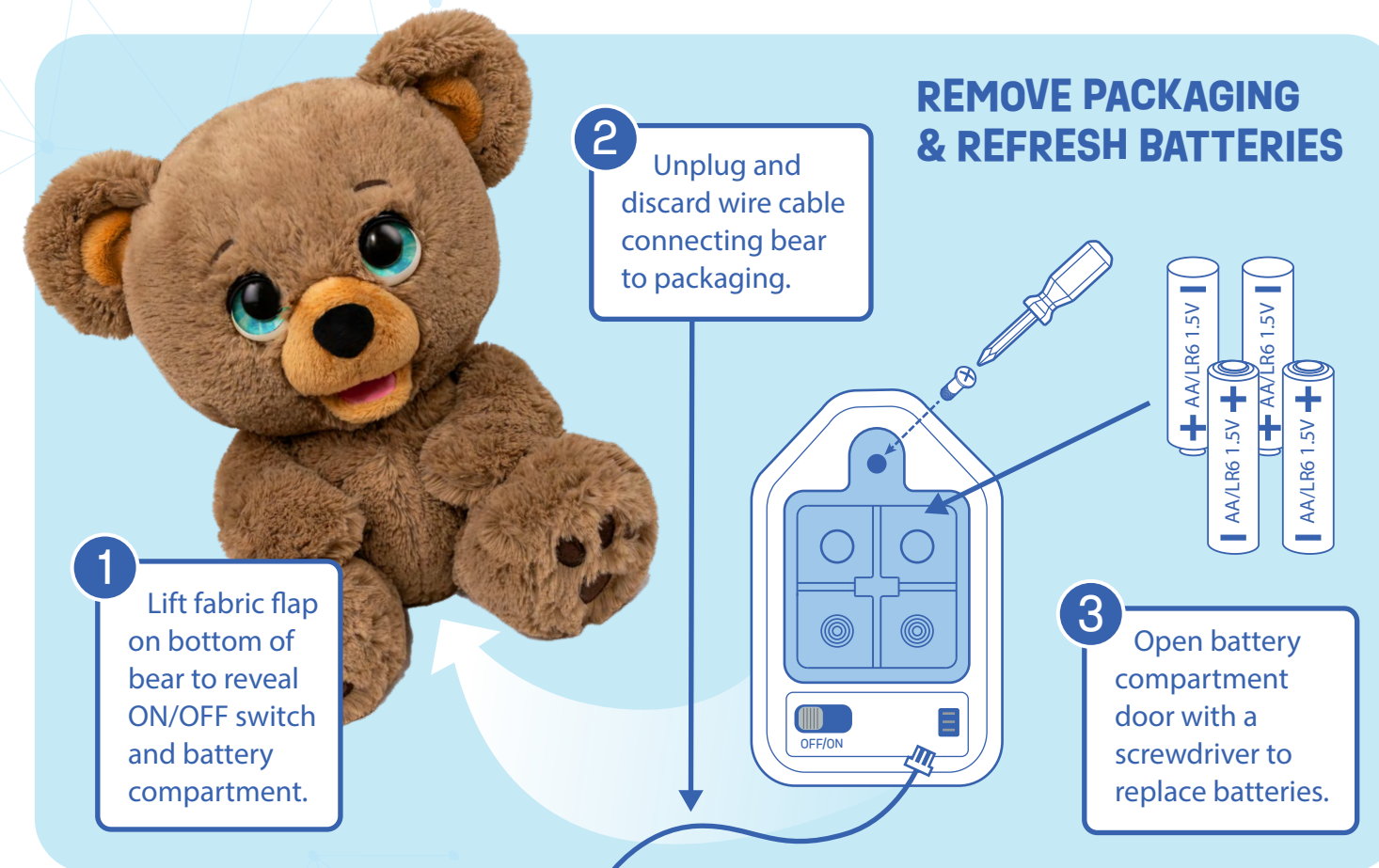
# Poe the Story Bear

**PLAYi**  
THE SMART WAY TO PLAY

4+

Bluetooth

Powered by OpenAI





BACK

FRONT



Poe magically comes to life to tell you amazing one-of-a-kind tales of adventure and imagination. Using your ideas and Poe's cutting edge AI technology, every story you create together is all original and uniquely yours.

# 1 DOWNLOAD & OPEN THE PlayAi STORY CREATOR APP

Download and open the PlayAi STORY CREATOR app on your device so you can create stories with Poe! Scan the code to download, or look for it in the App Store or Google Play.



# 2 CONNECT TO YOUR PHONE OR TABLET

When first turned on, Poe will try to connect to your device as indicated by his blue flashing ear. Go to your device's Bluetooth settings and select POE AI BEAR to complete the connection. Poe doesn't need to be connected to tell stories later, but a connection is required to create new stories and to save them into Poe's memory.

NOTE: Poe will attempt to connect for 30 seconds each time he is turned on. If more time is required or the connection is lost, turn Poe off then on again to reconnect.



Screen images are representations and may differ from the actual app.



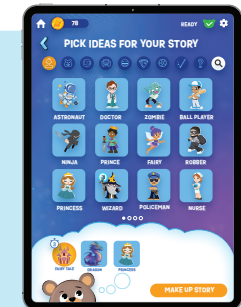
SELECT

PLAY / PAUSE



# 3 CREATE AMAZING STORIES

It's drag and drop easy! Follow prompts in the app to create new stories from ideas (icons) that you select. Choose one, two, or a bunch of ideas...There's no wrong way to create!



Poe includes basic and premium cloud AI supported features. Purchase of the product gives the purchaser unlimited access to the basic features, including generating original stories. Customized stories are a premium feature, and the product comes bundled with the ability to generate a fixed amount of customized stories. Packs of additional customized story tokens are available via in-app purchase.

IMPORTANT: Please note that any device paired with your bear will be granted access to your story token balance. Stories created from previously paired devices may continue to deduct from your balance, even if they are no longer paired. Only pair with devices you wish to have access.

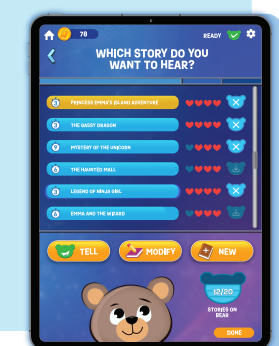
# 4 TELL A STORY

Stories are saved to your app's library, where you can select and rate them. Once selected, you can make Poe tell a story using app controls OR by squeezing his left ear (on your right if Poe is looking at you). You can squeeze his ear again to stop or start the story at any time.



# 5 TELL STORIES LATER, WITHOUT A DEVICE

You can save some of your favourite stories from your library directly onto Poe, so you can listen later without a device. Once disconnected, squeeze Poe's right ear (on your left if Poe is looking at you) to toggle through the saved stories saved on Poe, until you hear the title of the one you want to hear. Then squeeze his left ear to make Poe tell the story.



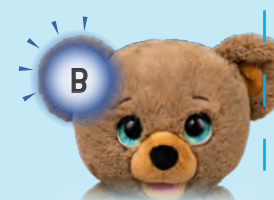
TRYING TO PAIR

ON/READY

DOWNLOADING STORY

TELLING STORY

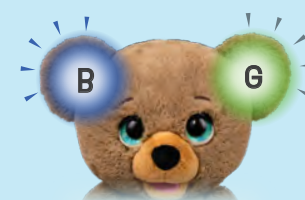
PAUSE STORY



Blinking BLUE



Both On



Both Blinking



Both Off



Blinking GREEN

INSIDE LAYOUT (HOW TO PLAY)