

User's Manual



Contents

GENERAL INFORMATION

P1

| | |
|-------------------------|----|
| Main Features | P1 |
| For your Safety | P2 |
| Unpacking | P3 |
| General Operation | P3 |
| RCU | P4 |
| Rear Panel | P5 |

INSTALLATION

P6

WELCOME PAGE

P7

MAIN MENU

P8

| | |
|-----------------------|-----|
| 1. Channel | P8 |
| 2. Installation | P11 |
| 3. Setup | P11 |
| 4. Tools | P15 |
| 5. Hot key | P16 |

TROUBLE SHOOTING

P19

GENERAL INFORMATION

For Your Safety

Warning statement

Changes or modifications to this unit not expressly approved by the party responsible for compliance could void the user authority to operate the equipment.

NOTE: This equipment has been tested and found to comply with the limits for a Class B digital device, pursuant to Part 15 of the FCC Rules. These limits are designed to provide reasonable protection against harmful interference in a residential installation. This equipment generates, uses and can radiate radio frequency energy and, if not installed and used in accordance with the instructions, may cause harmful interference to radio communications. However, there is no guarantee that interference will not occur in a particular installation. If this equipment does cause harmful interference to radio or television reception, which can be determined by turning the equipment off and on, the user is encouraged to try to correct the interference by one or more of the following measures:

- Reorient or relocate the receiving antenna.
- Increase the separation between the equipment and receiver.
- Connect the equipment into an outlet on a circuit different from that to which the receiver is connected.
- Consult the dealer or an experienced radio/TV technician for help.

GENERAL INFORMATION

This Digital Terrestrial Receiver (DTR) will take you to the new and exciting world of Digital Television. A world of crystal clear widescreen pictures, digital sound, more information and new services. All this and more on "Free to Air" Digital Television.

To make full use of your new DTR please take the time to familiarize yourself with the extensive features of the unit detailed in this User's Guide.

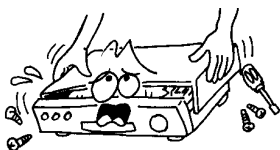
If you need help in setting up please call your dealer or a customer service adviser.

Main Features

- MPEG-2 digital & fully ATSC compliant
- 600 channels TV and Radio programmable
- 8 different favorite groups selection
- On Screen Display with multi-language
- Fully support to 16 days Electronic Program Guide (EPG)
- 256 colors On Screen Display
- Channel search in automatic, manual search
- Various channel editing functions (favorite, move, find, sort, delete, skip, lock, edit, Del All)
- Parental control for channels
- Ease to use Menu System
- OTA
- EIA-608/EIA-708
- Teletext support DVB ETS300472 by VBI and OSD
- Automatic save for last channel

GENERAL INFORMATION

For Your Safety



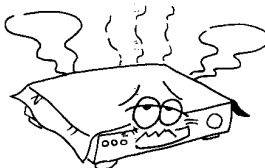
- To avoid electric-shock hazards, do not open the cabinet, refer servicing to qualified personnel only.



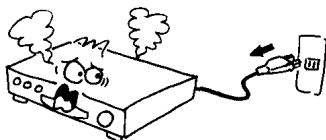
- Keep the receiver away from flower vases, tubs, sinks, etc., in order to avoid damaging the equipment.



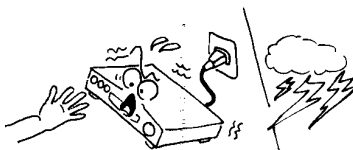
- Do not expose the receiver under the sunlight. And keep it away from the heat source.



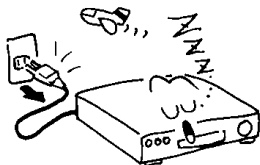
- Do not block ventilation holes of the Receiver so that air can circulate freely.



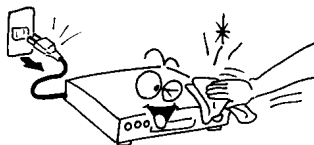
- When the abnormal phenomenon occur, you should cut off the power immediately.



- Do not touch the receiver during thunder, since that might create electric-shock hazards.



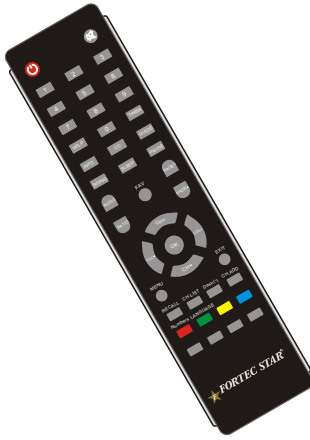
- Switch the receiver off whenever it remains out of service for an extended period.



- Be sure to turn the Receiver off and disconnect the AC power cord before cleaning the Receiver surface. If the surface is dirty, wipe clean with a cloth which has been dipped in a weak soap-and-water solution and wrung out thoroughly, and then wipe again with a dry cloth.

GENERAL INFORMATION

Unpacking



● Remote Control



● Batteries

General Operation

- Throughout this manual you will notice that the everyday operation of the receiver is based on a series of user friendly on screen display and menus. These menus will help you get the most from your receiver, guiding you through installation, channel organizing, viewing and many other functions.
- All functions can be carried out using the buttons on the RCU, and some of the functions can also be carried out using the buttons on the front panel.
- The receiver is easy to use, always at your command and adaptable for future advances.
- Please be aware that new software may change the functionality of the receiver.
- Should you experience any difficulties with the operation of your receiver, please consult the relevant section of this manual, including the Problem Shooting, or alternatively call your dealer or a customer service adviser.

GENERAL INFORMATION

RCU



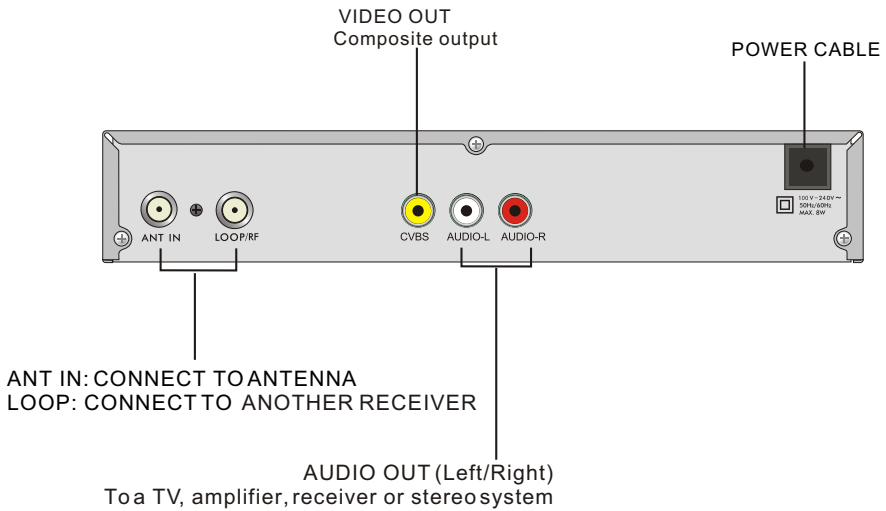
| Key | Function |
|--------------|---|
| | Turns power ON/OFF |
| | When watching a program, mute the sound |
| 0~9 | Enter number of the required menu item or select a program number to watch |
| AUDIO | Select program's audio language options if available. |
| RECALL | Switches back to previous program |
| FAV | Display the favorite program list |
| INFO | Shows information of the current program |
| CC | Select caption mode if available |
| PAGE+, PAGE- | Moves up / down a page in the program list |
| MENU | Press this key one time to run menu onscreen, and call command box |
| CH+, CH- | When watching a program, change programs or move to the next higher or lower item in the menu |
| OK, LIST | Executes the selected item in the menu screen or enters the desired value in any input mode |
| EXIT | Returns to the previous menu on the menu screen or escape from the menu |
| VOL+, VOL- | When watching a program, adjust the volume or move to the left or right item in the menu |
| RATIO | Turn ON, Switch different video aspect Ratio for 16:9, 4:3LB, 4:3PS |
| LANGUAGE | Turn ON, Switch different language for English, France etc. |
| PAUSE | Press once to pause the screen picture, press once again to go to the normal mode |
| CH.LIST | Turn ON channel list |
| Numbers | Chose channels and enter program Information |
| TIMER | Turn ON Program Timer to set |
| Dash(-) | Enters a channel number for multiple program channels such as 2-1, 2-2, and etc... |
| SLEEP | Turn ON Sleep Timer for different duration, 30min, 60 min and etc... |
| CH.ADD | Easy Installation |
| SIGNAL | Turn ON, display current program information, i.e. frequency, PID ...etc |
| HELP | Turn ON, Easy Installation for Language, Time Zone to scan program |
| GUIDE | Turn ON the Electronic Program Guide |

GENERAL INFORMATION

Front Panel

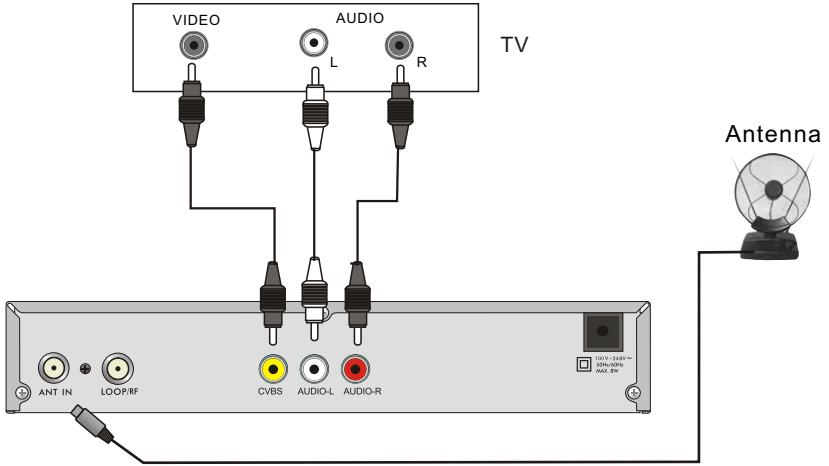


Rear Panel



INSTALLATION

Connecting to TV using RCA connectors



WELCOME PAGE

● When power on first time, it will show welcome page like below.

● Press **CH+,CH-** keys to move highlight to select **RF Channel** and **Time Zone**.

Press **VOL+,VOL-** keys to move the cursor to choose your choice.



● Move highlight to [Auto Scan] option and press **OK** key to enter "AutoScan" menu .



● Press [EXIT] key to exit this menu.

MAIN MENU

- When you press [MENU] key, you can enter **Main Menu**.

This menu consists of 4 major sub-menus as below.

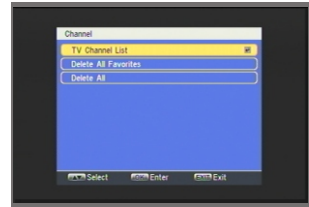
- Channel
- Installation
- Setup
- Tools



1. Channel

- Move highlight on Channel item and press [OK] key to enter Channel menu as desired.

This menu has three sub-menus: **TV Channel list**, **Delete All Favorites** and **Delete All**.



1.1 TV Channel List

- When you enter "Channel List" menu, the screen will display as below.

You can move highlight by press CH+, CH- keys and preview the highlighted program in preview window beside the channel list.

You can press [Page Up/Page Down] key to implement the Pageup or Page down function.

You can press [OK] key or [EXIT] key to enter full screen mode.



- Press number keys [1]~[4] to carry out the corresponding functions that show you at the bottom of screen.

1.1.1 Edit

Pressing number key [1] can pop up the Sort dropdown list.

Pressing CH+, CH- keys to move the cursor up and down. You can choose between Group 1-Group 8.

Pressing [OK] key will pop up a dialogue to ask whether assign channel to the group or not. Press [OK] key at the Yes button to assign the selected channel, or press [EXIT] key to cancel the operation.



MAIN MENU

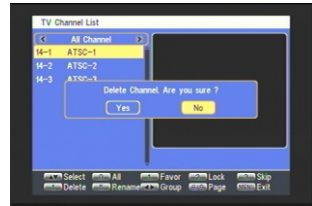
Pressing number key 2 to pop up a dialogue: Switch lock channel, are you sure? Select YES and press OK key to assign the selected channel with lock mark, or press [EXIT] key to cancel the operation.



Pressing number key 3 to pop up a dialogue: Switch skip channel, are you sure? Select YES and press OK key to assign the selected channel with skip mark, or press [EXIT] key to cancel the operation.



Pressing number key 4 to pop up a dialogue: Delete channel, are you sure?, Select YES and press OK key to delete the channel, or press [EXIT] key to cancel the operation.



Pressing number key 5 to enter the Rename window. Pressing CH+,CH- keys or VOL+,VOL- keys to choose the letter in right window. Move cursor to [OK] button and press, you can find the channel you want.



1.1.2 Find

Pressing number key [2] will enter Find window. Pressing CH+,CH- keys or VOL+,VOL- key to choose the letter in right window. Move cursor to [OK] button and press, you can find the channel you want.



MAIN MENU

1.1.3 Sort

Pressing number key [3] will pop up the Sort drop-down list.

Name(A-Z): The ascending order, omitting the \$ character, the number is ahead, then the capital letter, atlast the lowercase.

Name (Z-A): The opposite order of the above Name (A-Z).

Free/Scramble: All FTA programs are listed ahead, while all scrambled programs are listed last.

Lock: All locked programs are listed at the last.



1.1.4 Move

Pressing number key [4], there will be a moving mark on the right of the selected channel.

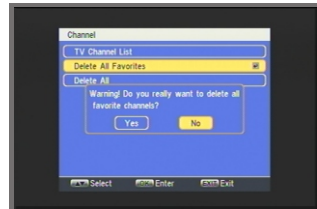
Then, you can move the selected channel to the position where you want to place it by press CH+,CH- keys . And press [OK]key to confirm your decision.



1.2 Delete All Favorites

When you move highlight on this option and press [OK] key, a message box will appear and ask you to choose.

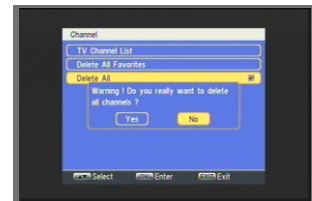
If you choose yes, it will remove all the favorite channels.



1.3 Delete All

When you move highlight on this option and press [OK] key to pop up the "Input Password" dialogue, you can not enter into the menu unless the correct password is inputted. The default password is "0000".

This operation is same as 1.3, but it will delete all the channels including TV channels and Radio channels.

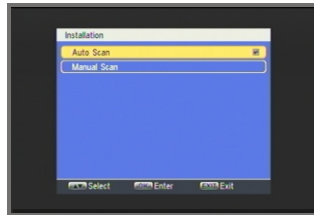


MAIN MENU

2. Installation

When you enter the Installation menu, the screen will display as below.

In this menu, you can press VOL+,VOL- keys to select sub-menus and press [OK] key to enter the menu which is chosen.

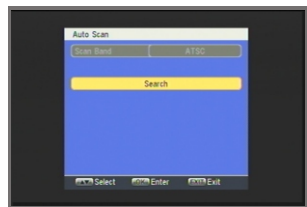


2.1 Auto Scan

When you enter Auto Scan menu, the screen will display as below.

Move the highlight on the search option, and press [OK] key to start scanning.

Press [EXIT] key to exit this menu.



2.2 Manual Scan

When you enter **Manual Scan**, the screen will display as beside.

There are two scan modes for you. You can choose to scan by channel or by frequency.

The **Ch Number** is from 2 to 69. When you select by Frequency in Scan Mode, **Ch Number** turned gray, at this time you can not edit it.

When you complete your configuration, move highlight to **search** option, and press [OK] key to start scanning.

Press [EXIT] key to exit the scanning and save the current parameters.



3. Setup

When you enter the System Setup menu, you will see the screen like besides.

It contains five sub-menus such as: OSD Language, TV System, Time Zone and Time, Timer Setting, Parental Control.

Press CH+,CH- keys to select menu among all the items.

Press [OK] key to enter the selected item.

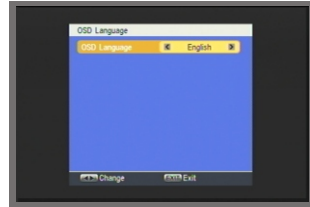


MAIN MENU

3.1 OSD Language

When you enter OSD Language, the screen will display as beside.

You can press VOL+,VOL- keys to choose OSD Language.



3.2 TV System

When you enter **TV System**, you will see the screen as beside.

1) Aspect Ratio is used for switching the screen aspect ratio mode. Now we provide several options: 4:3LB/4:3PS/16:9. You can press [Left/Right] key to select each mode circularly.

2) Therefore Channel: Select between RF CH -3 and RF CH-4

3) Audio Mode: Select between RF Mode and Line Mode.



3.3 Time Zone and Time

When you enter **Time Zone and Time**, the screen will display as beside.

1) GMT Usage: This option is used to open the usage of GMT. You can press **VOL+,VOL-** keys to switch among Off/User Define/by Timer Zone

2) Time Zone: You can edit this item when you select **By Time Zone** in **GMT Usage**. Press PR+,PR- keys to select the Time Zone

3) GMT Offset: This option is able just when the GMT Usage mode is User Define.

You can press VOL+,VOL- keys to switch GMT Offset value, and the range is -12:00~+12:00, increase each half hour progressively.

4) Date: This option is able just when the GMT Usage mode is Off. You can press [OK] key to begin to setup. Then you can set it up by the number key.

5) Time: The operation of this option is same as Date.

6) Time Display: The item can control whether the time will display on the screen or not.

7) Exit: Press [EXIT] key to draw back from Time menu.



MAIN MENU

3.4 Timer Setting

When you enter the **Sleep Timer** you will see the screen like besides

Press CH+,CH- keys to select menu among all the items.

Press [OK] key to enter the selected item.

Program Timer: contain **Timer Number** and **Timer Mode**.

Timer Number: Press VOL+,VOL- keys ,you can select between 1-8

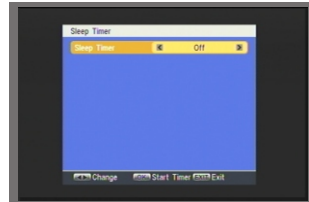
Timer Mode: Press VOL+,VOL- keys ,you can choose between On and Off.

Sleep Timer can set the time when the system can enter standby mode automatically.

You can use VOL+,VOL- keys to switch the parameter which offered in this item. Then press the [OK] key to active it.

After you activate it, the option of **remains** will show the remaining time. This option is only used to display but not be modified.

Press [EXIT] key to exit the current menu.



3.5 Parental Control

When you choose the option of **Parental Control** and press [OK] key, there will be a dialogue for you to input the password. The default password is 0000. If you input the correct password, you will see a screen like beside.



U.S. TV rating / MPA / C.E.L.R / C.F.L.R / Downloadable RRT: Blocks TV programs that you or your family may not wish to watch, based on the rating scheme set. Section 3.5.1 ,Section 3.5.2 , and section 3.5.3 will show you how to set the rating menu.

New Password is used for revising password; you can press [OK] key firstly then input the new password in this item by using number keys directly. After you filled in 4 digital numbers, the highlight will auto skip to Confirm Password and ask you to input the new password again. If the password is correct, the screen will show up a message of “Change password successfully” . After finish saving and draw back to “System Setup” menu, the revising is complete.

Press [Exit] key to draw back from the “Parental Lock” menu.

MAIN MENU

3.5.1 U.S. TV Rating

U.S. TV rating When you enter “U.S. TV rating” menu, you will see a screen like below:

1. Press **CH+,CH-,VOL+,VOL-** keys to move rating position and press [ok] to lock or unlock the rating setting. You can also press “Allow All” or “Block All” to switch all rating setting.

2. Each time you move rating position, the rating description will show what this position means under this rating table.

3. Press [Exit] can exit the current menu.



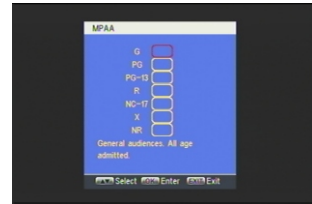
3.5.2 MPAA/C.E.L.R/C.F.L.R

When you enter “MPAA”, “C.E.L.R”, or “C.F.L.R” menu, you will see a screen like beside:

1. Press **CH+,CH-** key to move rating position and press [ok] to lock or unlock the rating setting.

2. Each time you move rating position, the rating description will show what this position means under this rating table.

3. Press [Exit] can exit the current menu.



3.5.3 Downloadable RRT

This item will only be selectable when a new rating system can be downloaded via digital broadcasting in the U.S. When it can be selected, user can switch to this item to set the rating system.

The setting operation is the same as MPAA/C.E.L.R/C.F.L.R. Select a rating dimension.



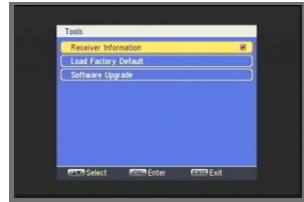
4. Tools

When you enter Tools menu, you will see the screen like below.

It contains three sub-menus such as: Receiver Information, Load Factory Default, Software Upgrade.

Press CH+,CH- key to select menu among all the items.

Press [OK] key to enter the selected item.

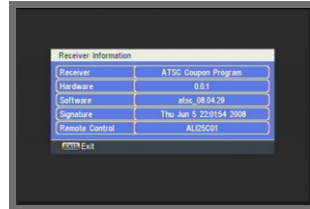


4.1 Receiver Information

When you enter Receiver Information menu, you should see the screen like it displays on the right.

This screen displays receiver information.

You should press [EXIT] key to cancel this menu.

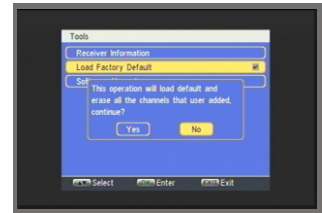


4.2 Load Factory Default

When you choose the option of **Load Factory Default** and press [OK] key, there will be a dialogue for you to input the password. The default password is 0000. If you input the correct password, you will see a screen like beside.

If you choose **Yes**, all the parameters of this receiver will reset to the default value.

Note: Please use this function carefully.



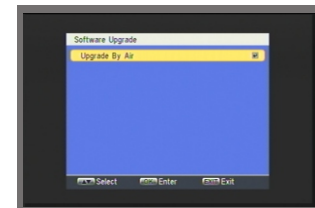
4.3 Software Upgrade

In this function, we offer a upgrade service for users.

Press CH+,CH- key to select menu among all the items.

Press [OK] key to enter the selected item.

Press [EXIT] key to save the parameters and draw back.

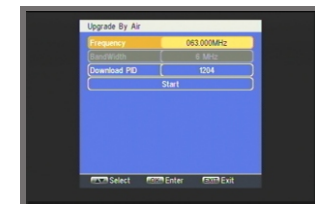


4.3.1 Upgrade By Air

This function can upgrade the software through signal lines from the cable.

1 .Input the frequency value and download PID, and select bandwidth.

2 .Then move the highlight to the start button and press [Enter] key to begin to upgrade.



MAIN MENU

5. Hot Key

5.1 Number

Use the **numeric keys (0-9)** to input the number of the desired channel. If the inputted number is beyond the valid channel number, system will "Invalid number" and press **OK** key to close this message.

5.2 CH+/CH- (Channel Change)

Press **CH+**, **CH-** keys to change the channel up or down. If in the all satellites group, you can select channel in all searched channels. If in the specific satellite, only can select channel in the satellite group.

5.3 Vol+/Vol-

Press **VOL+**, **VOL-** keys to change the volume. Press **VOL-** key to decrease the volume by step 1, while press **VOL+** keys to add the volume by step 1.

5.4 Mute

Press **MUTE** key to close the volume. You can press **MUTE** key once again to restore the volume, or press **VOL+**, **VOL-** keys to open the volume.

5.5 Pause

During the viewing, you can press **PAUSE** key to stop the picture while the volume continues. You can play the picture by pressing **PAUSE** key once again.

5.6 Standby

1. Press [Power] Key can enter the Standby state
2. In Standby state, press [Power] Key again can call back the unit and go on play the previous channel
3. User can also disconnect the device's main power to end the Standby state.

5.7 Page+/Page-

In full screen, press [Page-/Page+] to change viewing group.

5.8 OK

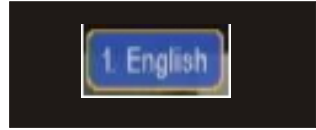
1. During the viewing or listening, press **OK** key to pop up the TV program list or the Radio program list.
2. Press **CH+**, **CH-** keys to select the channel up or down, and then press **OK** key to play this channel in full-screen.
3. Press **VOL+**, **VOL-** keys to select the satellite.
4. Press **MENU** or **EXIT** key to close this window.



MAIN MENU

5.9 Audio

In full screen, press [Audio] key can switch available audio language.



5.10 Recall

Press **Recall** key to switch the current channel to the previous channel.

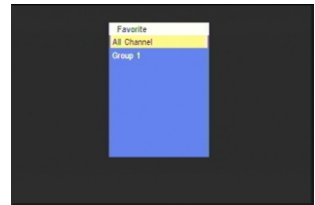
5.11 Info

Press **INFO** key to enter into the information Window.



5.12 FAV

1. Press **FAV** key to pop up the favourite group window.
2. Press **VOL+,VOL-** keys to select the favorite group. Press **CH+,CH-** keys to select the channel up or down. Press **OK** key at the selected channel to view it in full-screen. Press **MENU** or **EXIT** key to exit.



5.13 GUIDE

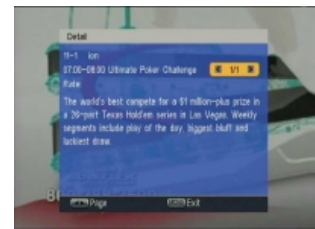
1. The STB has an Electronic Program Guide (EPG) to help you navigate channels through all the possible viewing options. The EPG supplies information such as channel listings and starting and ending times for all available programs. Press [EPG] key to display EPG screen.



2. Press [OK] key can see the program detail information.

3. Press [Left/Right] key can switch time by hour. Press [Page down/Page up] can switch time by day.

4. Press [Menu] key to exit.



5.14 CC

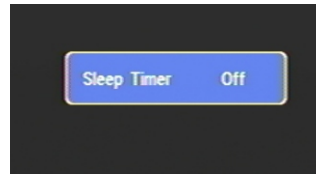
Press [CC] key in full screen, it can switch available DTV CC service or Caption to show closed caption.



MAIN MENU

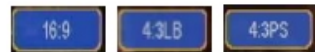
5.15 SLEEP

- 1 You can set sleep time by press [Sleep] key in full screen.
- 2 The sleep mode include: Off / 1hr/ 2hr/ 4hr/ 8hr.



5.16 Ratio

Press [RATIO] key to switch video aspect ratio.



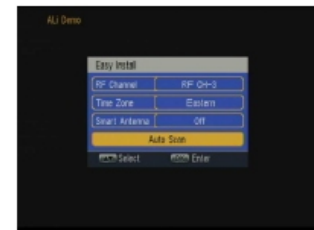
5.17 Signal

Press [SIGNAL] key will show the parameters of current channel as blow picture.



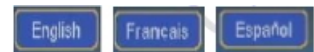
5.18 Easy Install

Easy Install Press [CH.ADD] key to into easy install menu.



5.19 Language

Press [LANGUAGE] key to switch OSD language.



5.20 Timer

Press [TIMER] key to setup timer.



TROUBLE SHOOTING

| Problem | Possible causes | What to do |
|--|---|--|
| The display on the front panel does not light up. | Main cable is not connected. | Check that the main cable is plugged into the power socket. |
| No sound or picture, but the front panel shows red light. | The receiver is in standby mode. | Press the standby button. |
| No sound or picture. | No signal or weak signal. | Check the cable connections, antenna and other equipment connected between the antenna and the receiver. |
| | Signal is too strong. | Connect a signal attenuator to the antenna input. |
| Bad picture / blocking error. | Antenna noise factor too high. | Change to an antenna with lower noise factor. |
| | The antenna is faulty. | Change the antenna. |
| The picture is not displayed on the screen, when switching on. | The system is connected by RF leads. | Check the UHF channel fixed in your system and tune the UHF channel properly. |
| There is interference on your terrestrial program or video signal. | The system is connected by RF leads and the output program of the receiver interferes with an existing terrestrial program or Video signal. | Change the receiver output program to a more suitable program, or connect the system by SCART leads. |
| The RCU is not working. | Battery exhausted. | Change the batteries. |
| | RCU is incorrectly aimed. | Aim RCU at the receiver, or check that nothing blocks the front panel. |

- **Note** : If you have tried all of the actions suggested above, without solving the problem, please contact your dealer or a customer service adviser.