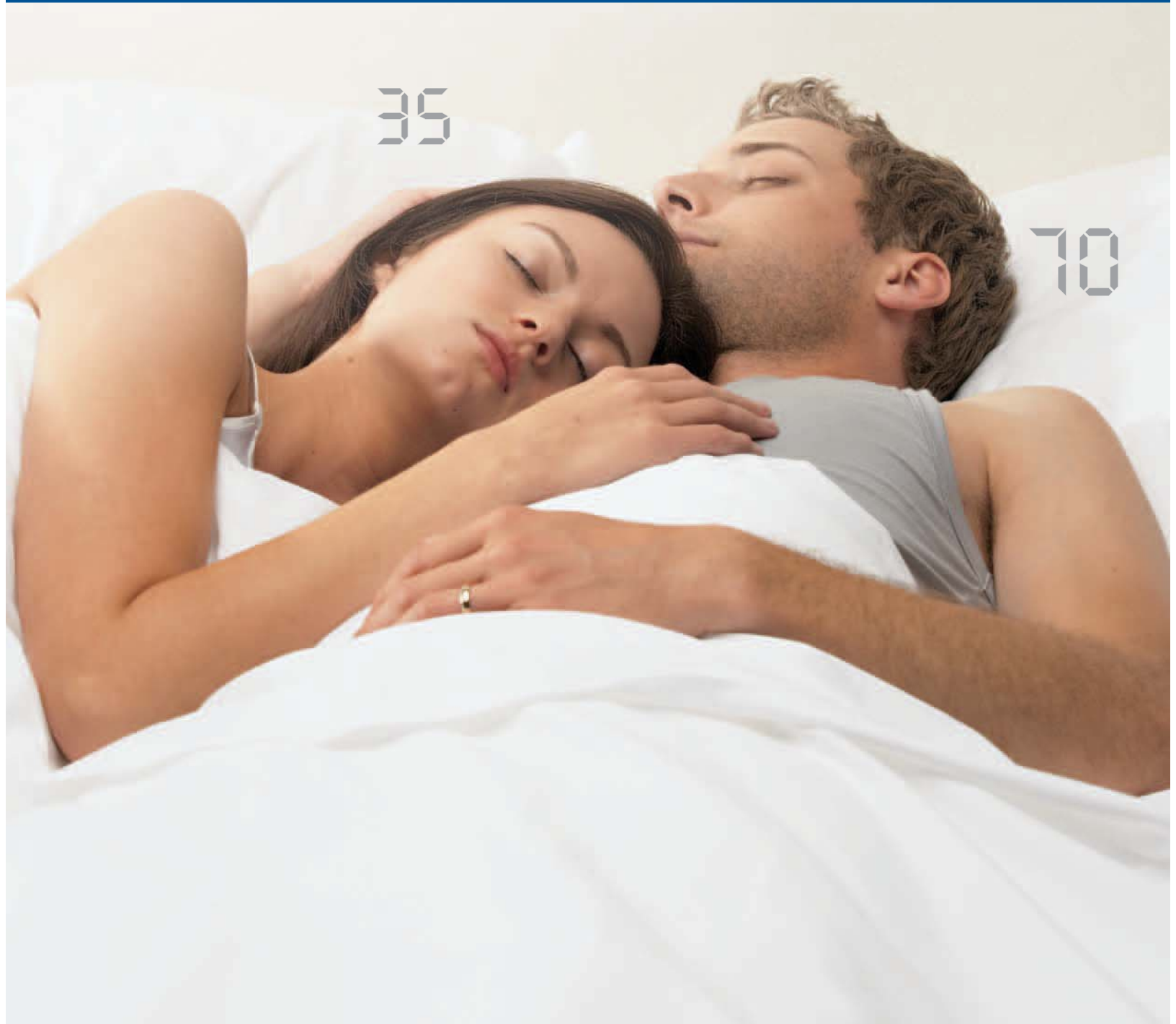


# Welcome to your Sleep Number® Bed

- ▶ 4000 and 5000 model  
assembly instructions inside

45

80



35

70



## Welcome and Congratulations

Welcome and Congratulations,

Congratulations on your purchase of The Sleep Number Bed by Select Comfort™! You're about to join more than 5 million people who've traded their innerspring mattresses for the most innovative sleep surface ever. The technology behind the SLEEP NUMBER® bed is one that recognizes the unique sleeping needs of every individual, which vary according to comfort preference, body type, height, weight, sleeping position, and other health and lifestyle factors. By creating a fully personalized sleep surface, your new Sleep Number® bed offers you customized comfort that can significantly improve your sleep quality.

You'll enjoy years of the latest generation of sleep comfort and technology in your Sleep Number® bed. Our commitment to constant innovation, value and customer satisfaction has repeatedly earned us the *Consumers Digest* Best Buy award. Sleep Number® bed owners like you have made us the No. 1 bedding retailer year after year, as ranked by *Furniture/Today*.

We invite you to tell your friends and neighbors about this revolutionary product that can help them attain the most comfortable sleep possible. When your referral results in a purchase, you'll earn valuable rewards\* that will make it easier for you to add another Sleep Number® bed to your home and ensure improved sleep for your children or your guests.

We thank you for your purchase and wish you years of personal comfort and restful sleep.

William R. McLaughlin  
President & CEO  
My Sleep Number® is 55

\* See Owners' COMFORT CLUB® Rewards on page 38.

## WHAT'S INSIDE

Setting up your new SLEEP NUMBER® bed only takes about an hour, but you'll enjoy the benefits of better sleep for years to come. You won't need any tools and, although it's nice to have a helper, you can do it by yourself. First, you'll need to remove your old bed. Next, we'll guide you step-by-step through assembling the foundation, positioning the mattress and attaching the Firmness Control™ System. Then, you'll learn how to find your Sleep Number® setting. And, finally, the best part—you can luxuriate in the personalized comfort of your Sleep Number® bed.

- ▶ Foundation Assembly ..... pg 3
- ▶ Mattress Assembly ..... pg 11
- ▶ Firmness Control™ System ..... pg 23
- ▶ FCC Users Information ..... pg 26
- ▶ Mattress Care ..... pg 31
- ▶ Accessories ..... pg 33
- ▶ Warranty and Comfort Club® ..... pg 35

# Foundation Assembly



Note: Texture and surface appearance may vary.

# Foundation Assembly

If you are missing any items listed on the following page, please e-mail Customer Service at [customerservice@selectcomfort.com](mailto:customerservice@selectcomfort.com) or call 1.800.472.7185

## TROUBLESHOOTING

For answers to some common questions regarding your foundation, see the Frequently Asked Questions at the end of this section.

*"I assembled the Sleep Number bed by myself. My wife was in doubt at first, but, after sleeping one night, she said, it was magic how well she slept without back pain. Now we sleep longer and more comfortably than any previous mattress we've owned."*

- C. Clark Shedd, Tucson, AZ

## BEFORE YOU BEGIN

- ▶ Carefully check the contents of your foundation boxes
- ▶ Decide where to put your new bed
- ▶ Make sure there's an electric power source nearby for use with your Firmness Control™ System
- ▶ Assemble your bed frame if you have one

Your foundation should be assembled directly onto your bed frame or on the floor. Some bed frames have slats that run from one side of the bed to the other. If your bed frame has slats, position the slats evenly to support the foundation. If your bed frame has fewer than three slats, we recommend adding additional slats to ensure adequate support for your foundation.

Caution: With some styles of bed frames, the foundation length may extend beyond the frame's support legs. This situation makes it possible for the frame to tip when significant weight is placed at the foot of the bed. Please use caution when sitting or placing weight on the foot of the bed when using these types of frames.

### ▶ King foundation

The King foundation consists of two Twins side by side. Complete the assembly of one unit, assemble the second, then place side by side on the bed frame.

# CONTENTS

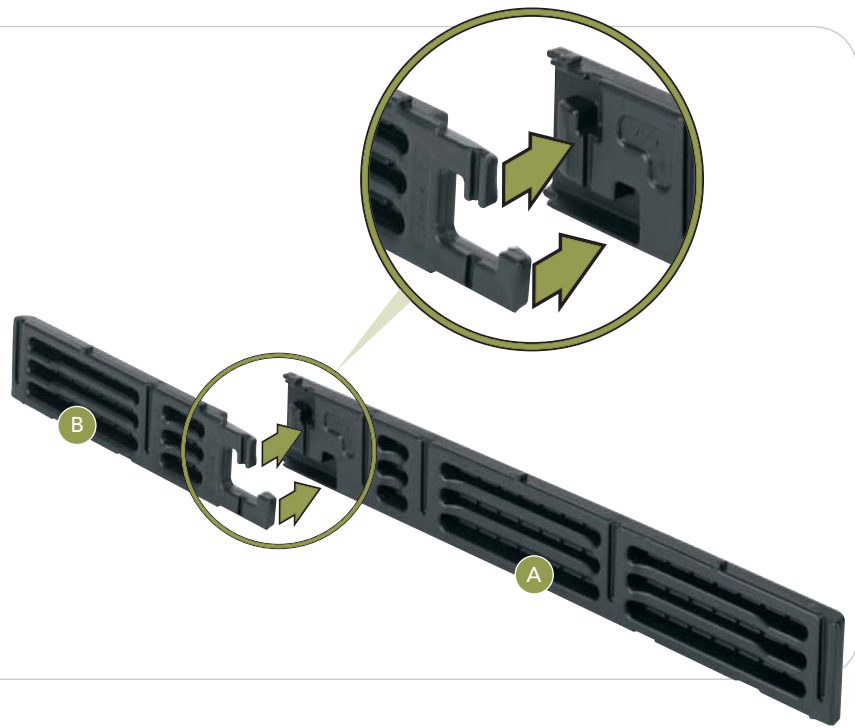
Carefully check the contents of your foundation boxes and compare with the list below. Each component is clearly labeled with the part name and part number.

		QUANTITY			
		Twin	Full	Queen	King
 <p><b>Side Rails</b></p>	2 each	2 each	2 each	4 each	
 <p><b>Support /End Beams</b> Texture and surface appearance may vary</p>	6	6	6	12	
 <p><b>Deck Panels</b> Texture and surface appearance may vary</p>	2	4	4	4	
 <p><b>Pin Components</b></p>	2	2	2	4	
 <p><b>Fabric Coverlet</b> Packaged in the mattress box Shown as packaged</p>	1	1	1	1	
<p><i>Expanded Queen only</i></p>  <p><b>Corner Brackets</b> Packaged in the mattress box</p>	0	0	4	0	

## 1 CONNECT SIDE RAILS

Push the components labeled A side rail and B side rail together.

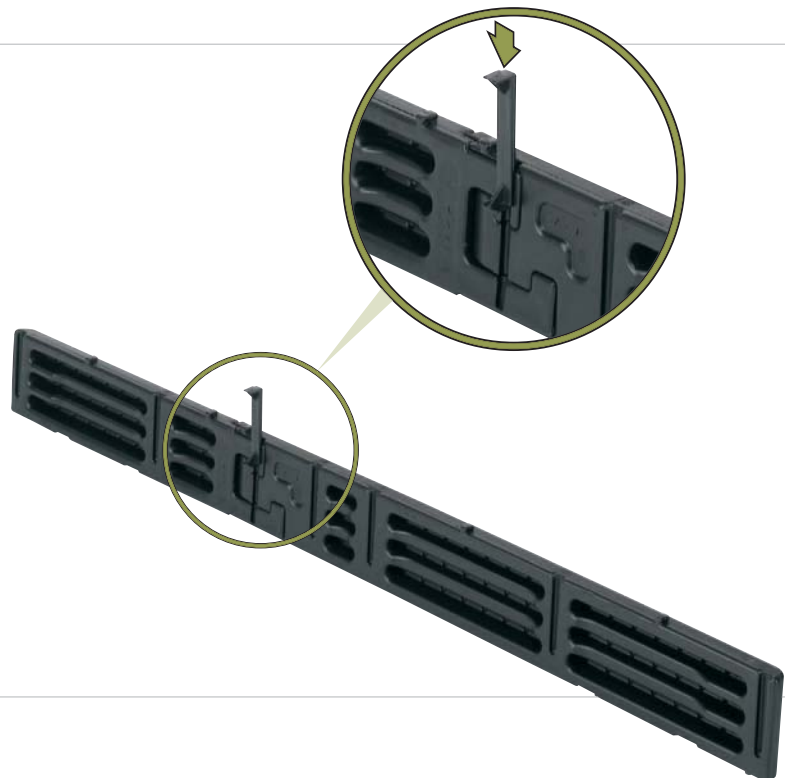
*Joints fit tightly. Push firmly.*



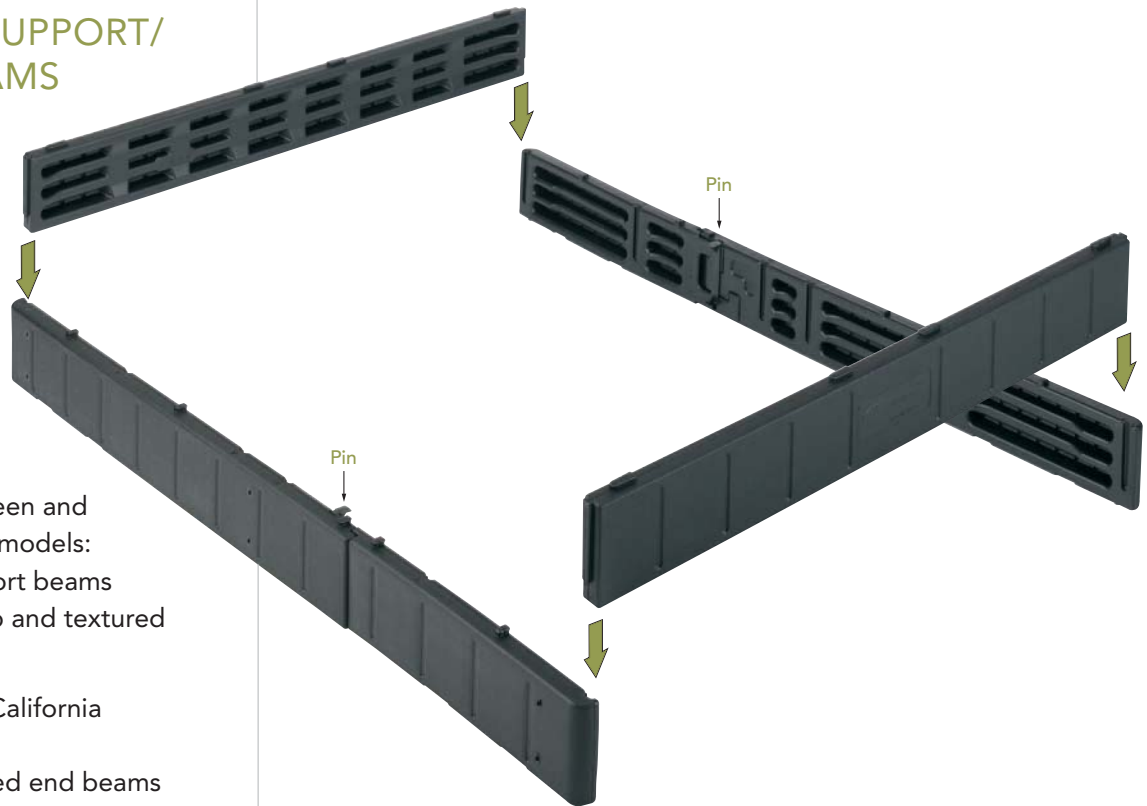
## 2 INSERT PIN

Slide pins in, "T" end up.

*Push firmly.*



### 3 INSERT SUPPORT/ END BEAMS



For Twin, Queen and Eastern King models:

- insert support beams with tabs up and textured side out.

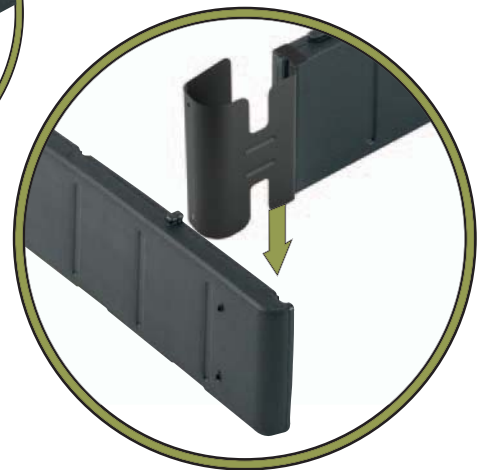
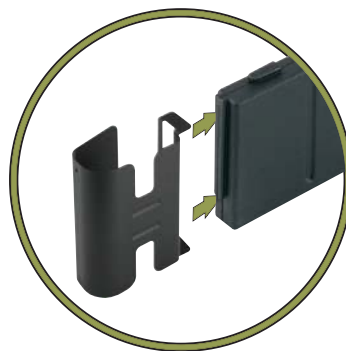
For Full and California King models:

- insert labeled end beams followed by remaining support beams with tabs up.

*Joints fit tightly. Push firmly until top is flush.*

### Expanded Queen models only

Attach a corner bracket over each end before connecting to the side rail.

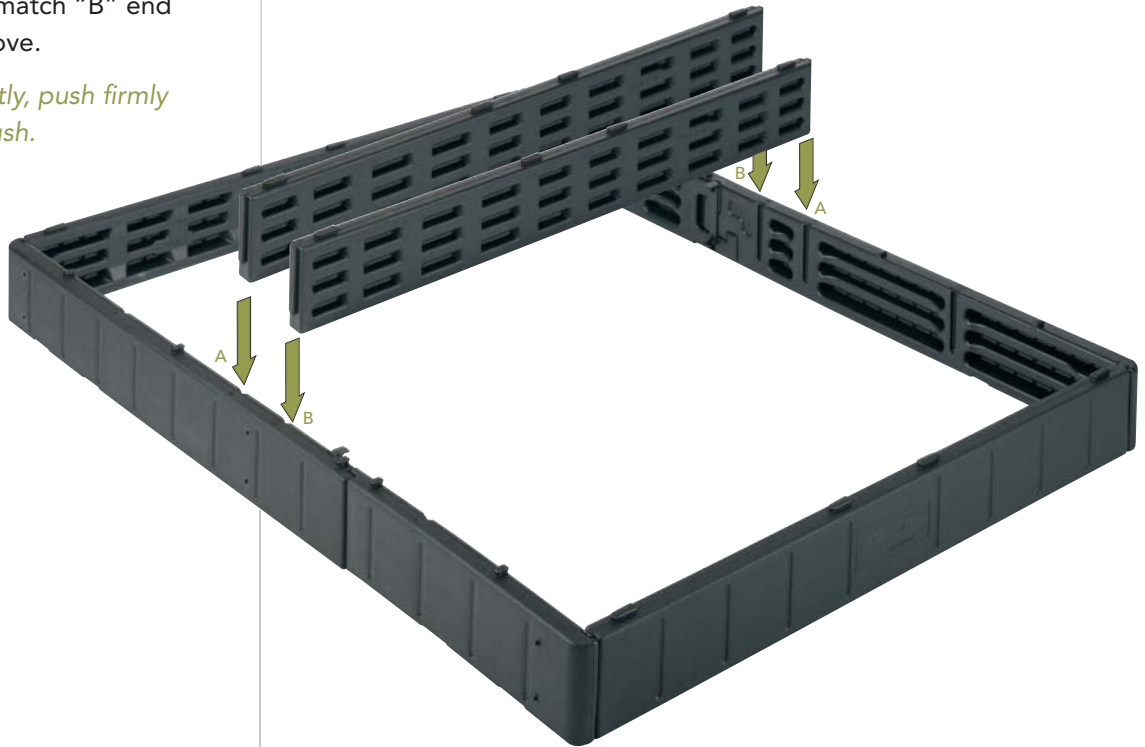




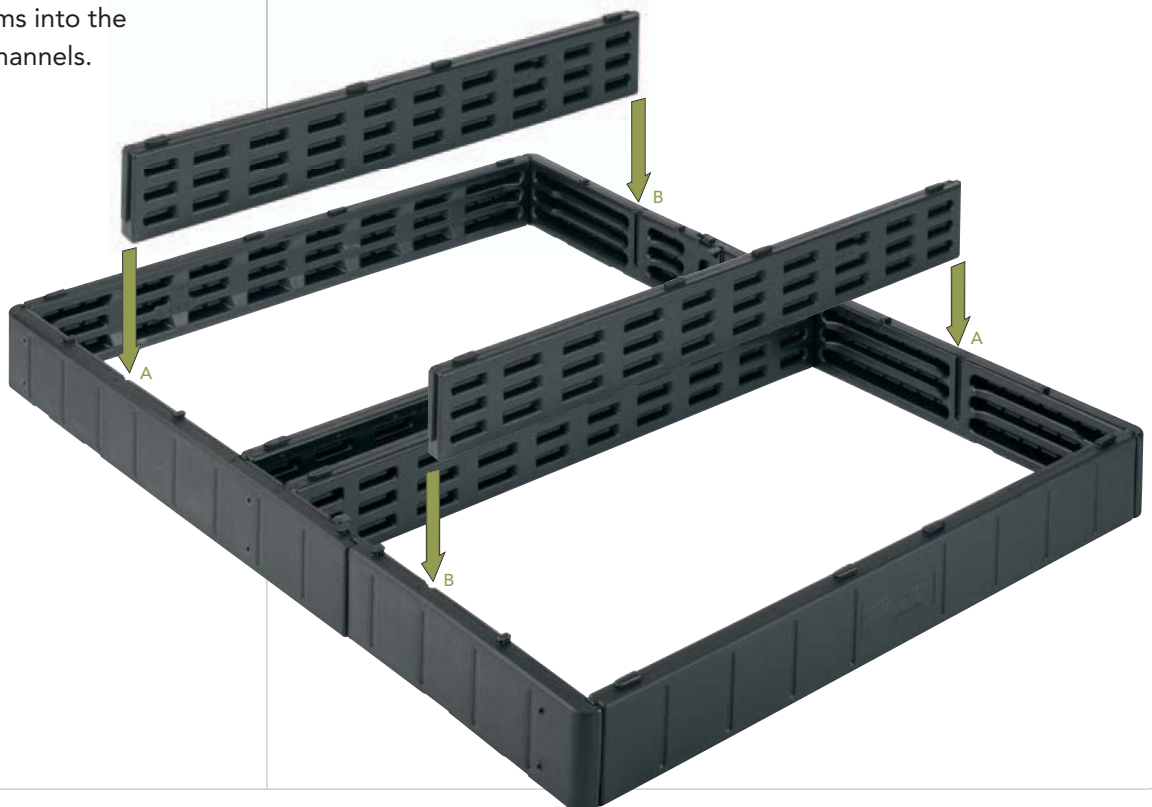
#### 4 INSERT SUPPORT BEAMS

Tabs up, match "A" end with "A" groove; match "B" end with "B" groove.

*Joints fit tightly, push firmly until top is flush.*



Slide the remaining support beams into the next set of channels.



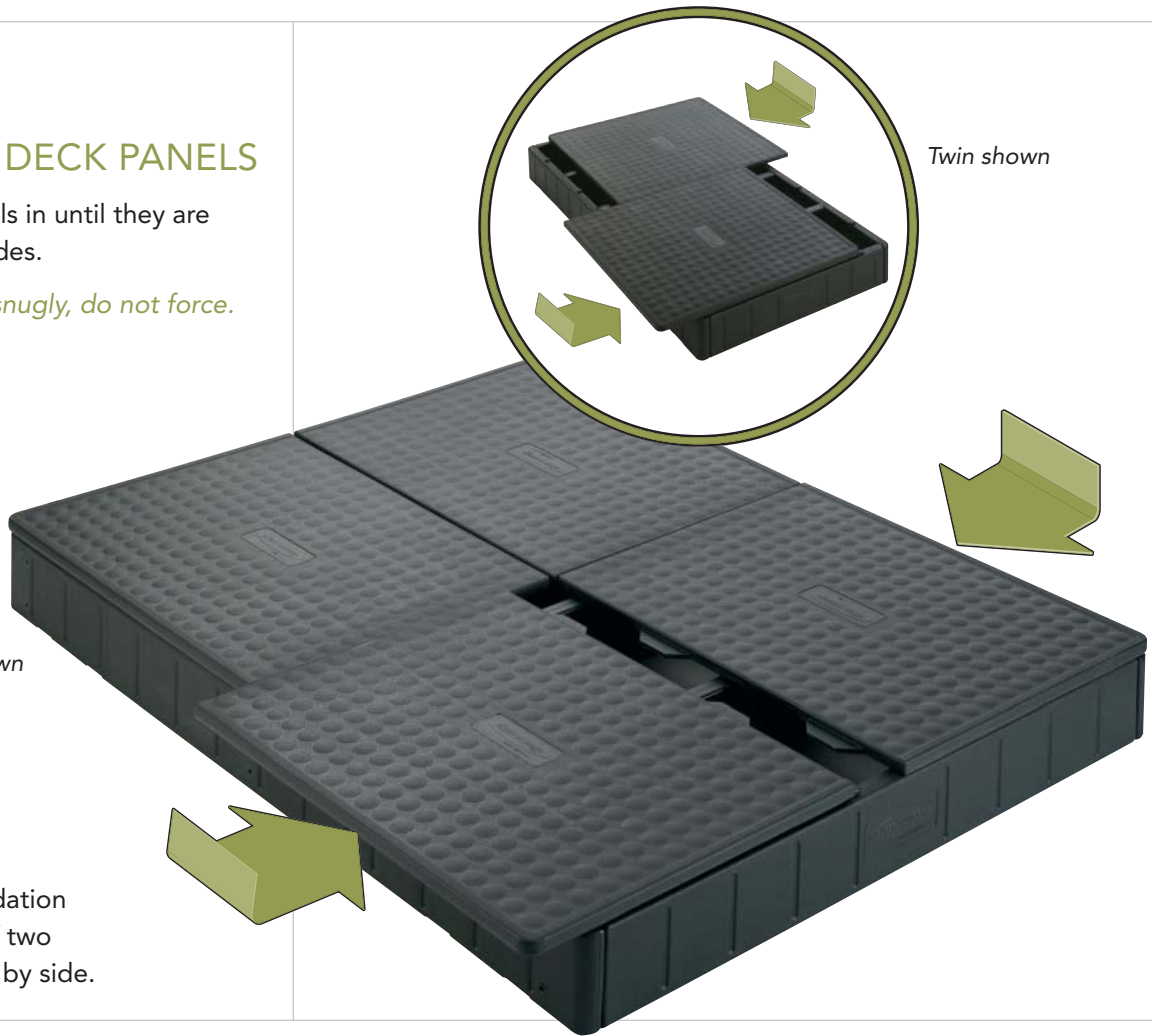
## 5 PLACE DECK PANELS

Slide panels in until they are flush on sides.

*Panels fit snugly, do not force.*

Queen shown

*Reminder*  
King foundation consists of two  
Twins side by side.



## 6 PUT ON COVERLET

Work on carefully, one corner at a time, position seam at head of bed.

*Expanded Queen coverlet will go over the corner brackets.*



YOU'RE DONE! NEXT STEP ► MATTRESS ASSEMBLY

# Foundation Frequently Asked Questions

What if I can't get my center support beams flush with the side rails?

Make sure the letter on the center support beam matches the side rail. For example, the end of the center beam labeled "A" should connect to the side rail with the "A" on it. Additional force may be required.

How can I get my pins in all the way?

All pins are wider at one end and narrower at the other end. Make sure the "T" end is up and the narrow end goes into the side rail first. You may need to use a bit of force to get it in place.

What can I do if I can't get the deck panels to lay flat?

First, make sure all the pins and beams are flush. Then, set the deck panel over the notches. You should then be able to slide the panel into place.

Where is the hardware for the footboard and headboard brackets?

The same hardware for attaching the legs to the foundation is used for attaching the brackets. Align the bracket with the holes for the leg bolts. Attach the leg per the instructions.

If you still have questions or need assistance, look for answers on our [Web site sleepnumber.com](http://sleepnumber.com) or please call Customer Service at 1.800.472.7185

# Mattress Assembly



# Mattress Assembly

If you are missing any items listed on the following page, please e-mail Customer Service at [customerservice@selectcomfort.com](mailto:customerservice@selectcomfort.com) or call 1.800.472.7185

## TROUBLESHOOTING

For answers to some common questions regarding your mattress, see the Frequently Asked Questions at the end of this section.

*" This is the first time in three years that I slept through the entire night without getting up two or three times. I'm thrilled and amazed! Unbelievable! I wish we had purchased your sleeping system years ago. "*

- Keith Fisher, Jackson, MI

## BEFORE YOU BEGIN

- ▶ Carefully check the contents of your mattress boxes
- ▶ **IMPORTANT NOTE** Prepare your foam pad(s)

If you purchased a bed with foam comfort pad(s), carefully open the pad(s) and set aside.

**At least 20 minutes of expansion time is needed.**

- ▶ **Orientation**

These instructions refer to "left" and "right" as if you are standing at the head of the bed looking toward the foot of the bed.

- ▶ **Using a Surge Protector**

While the Firmness Control™ System may be plugged directly into a wall outlet, we recommend using a surge protector to guard against unexpected power surges. We recommend using a surge protector that is listed to UL® 1449 with a clamping voltage of 330 volts, and a joule rating of 700 or higher.

Please note: Your 20-Year Limited Warranty does not cover damage to the Firmness Control™ System due to a power surge, regardless of the source. See the Limited Warranty on page 37 for more details.

# CONTENTS

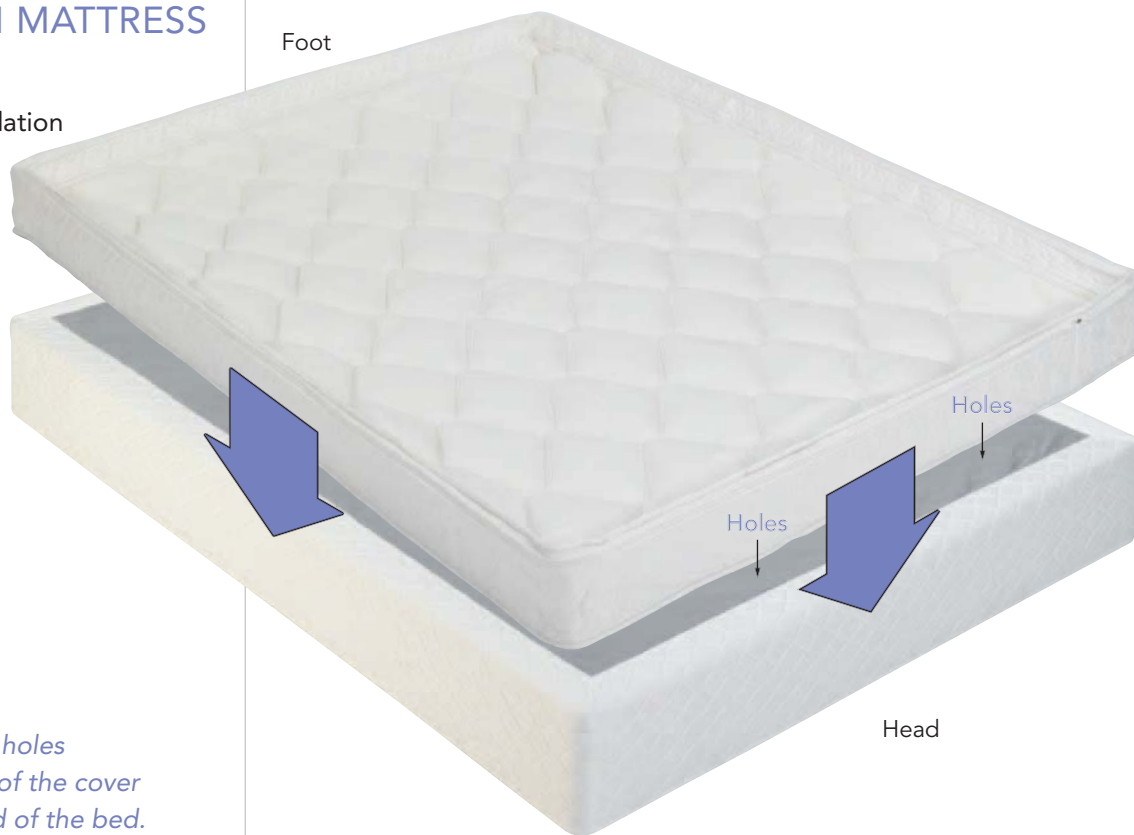
Carefully check the contents of your mattress boxes and compare with the list below. Each component is clearly labeled with the part name and part number.

		QUANTITY			
		Twin	Full/Queen Single Chamber	Dbl/Queen Dual Chamber	King
<p><b>Mattress Cover</b></p> <p>Color and pattern will vary by model</p> <p>Shown as packaged</p> 		1	1	1	1
<p><b>Foam Border Walls</b></p> <p>Two long and two short</p> <p>Shown as packaged</p> 		4	4	4	4
<p><b>Corner Lock™ System</b></p> <p>Shown as packaged</p> 		4	4	4	4
<p><b>Air Chambers</b></p> 		1	1	2	2
<p><b>Firmness Control™ System with Remotes</b></p> <p>Remotes will vary</p> 		1	1	1	1
<p><b>Center Foam Wall</b></p> <p>Dual Chamber models only</p> 		0	0	1	1
<p><b>Foam Comfort Pad</b></p> <p>Color and pattern may vary</p> <p>Shown as packaged</p> 		1	1	1	1

**REMEMBER:** Open the foam comfort pad(s) before you begin and let expand for 20 minutes.

## 1 POSITION MATTRESS COVER

Place on foundation or on existing bed platform.



*Make sure the holes in the bottom of the cover are at the head of the bed.*

## 2 UNZIP MATTRESS COVER

Set cover aside.



### 3 PLACE CORNER LOCKS

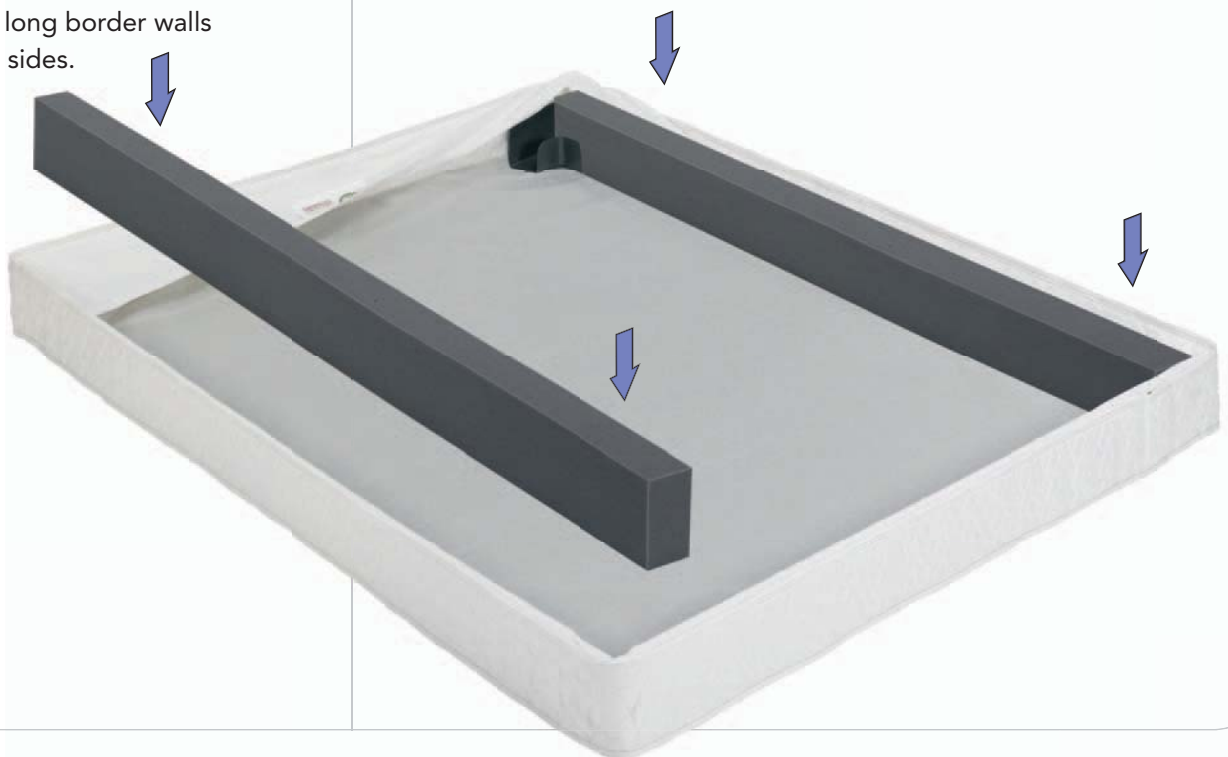
Place one in each corner.

*Corner locks must go under the border wrap.*



### 4 INSTALL FOAM BORDER WALLS

Place long border walls along sides.





## 5 INSTALL FOAM BORDER WALLS

Place short border walls at the head and foot.

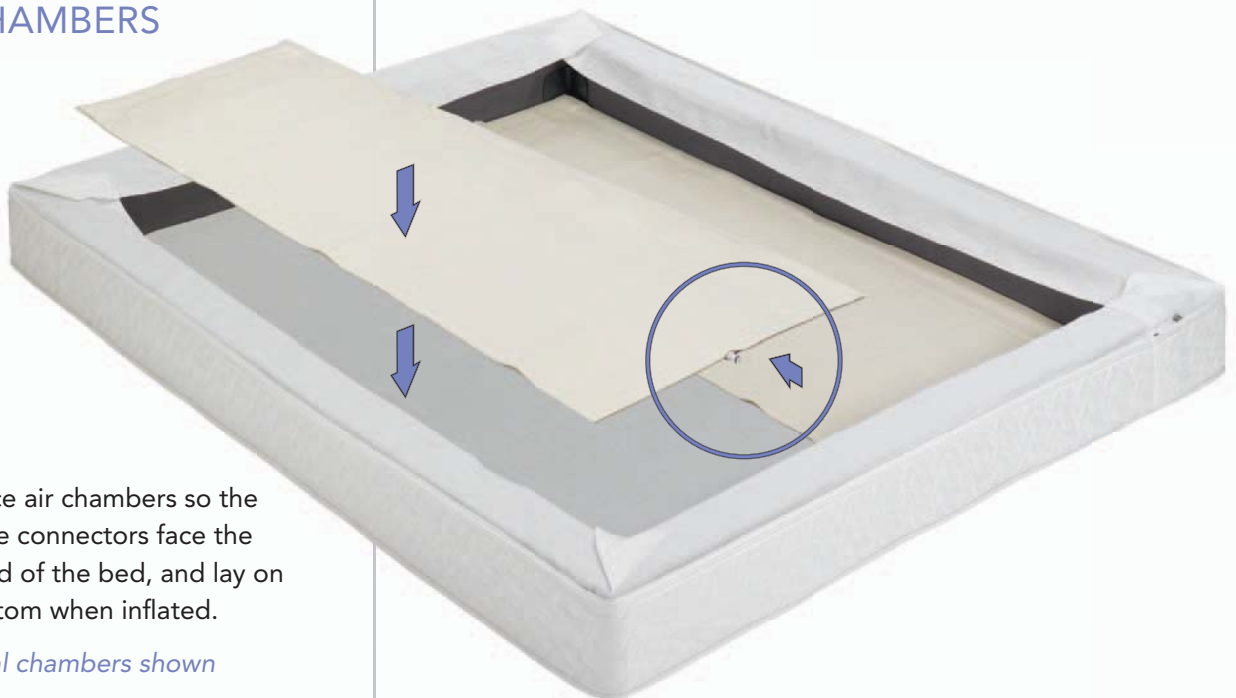


*Make sure the foam border walls are connected securely and squarely. The border wrap should cover the foam border walls.*

## 6 INSTALL AIR CHAMBERS

Place air chambers so the hose connectors face the head of the bed, and lay on bottom when inflated.

*Dual chambers shown*



## 1 CONNECT FIRMNESS CONTROL™ SYSTEM

Place the Firmness Control™ System on the floor at the head of the bed and plug in the power cord.

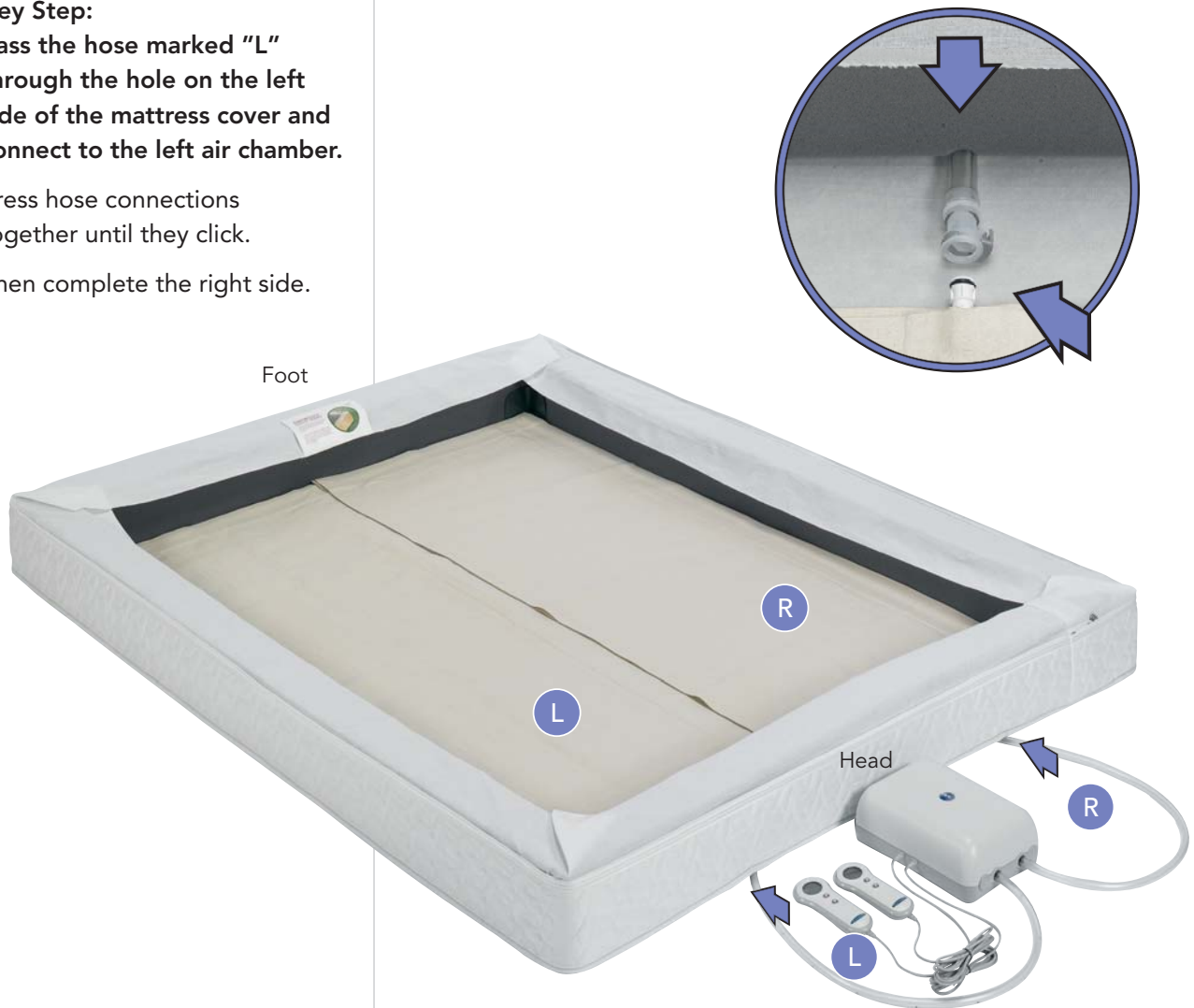
*For the Sleep Number® 5000 Bed you will also need to plug the power cord into the Firmness Control™ System.*

### Key Step:

Pass the hose marked "L" through the hole on the left side of the mattress cover and connect to the left air chamber.

Press hose connections together until they click.

Then complete the right side.



8 INFLATE AIR CHAMBER(S)

Sleep Number®  
4000 Bed

Sleep Number®  
5000 Bed

Using remote, inflate air chamber.

*For dual chamber models, repeat for second air chamber.*



Press L or R to activate and select a side.

Press and hold the firmer ▲ button to begin inflating the mattress.

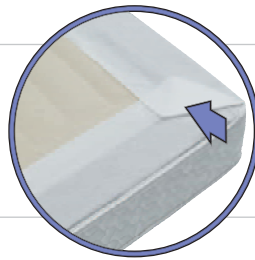
Press any button on the remote to activate.

*For wireless remotes, press L or R to activate and select a side.*

Press the ▲ button several times to inflate to 20. Adjustments will begin after a slight delay.

Insert center foam wall between the two chambers.

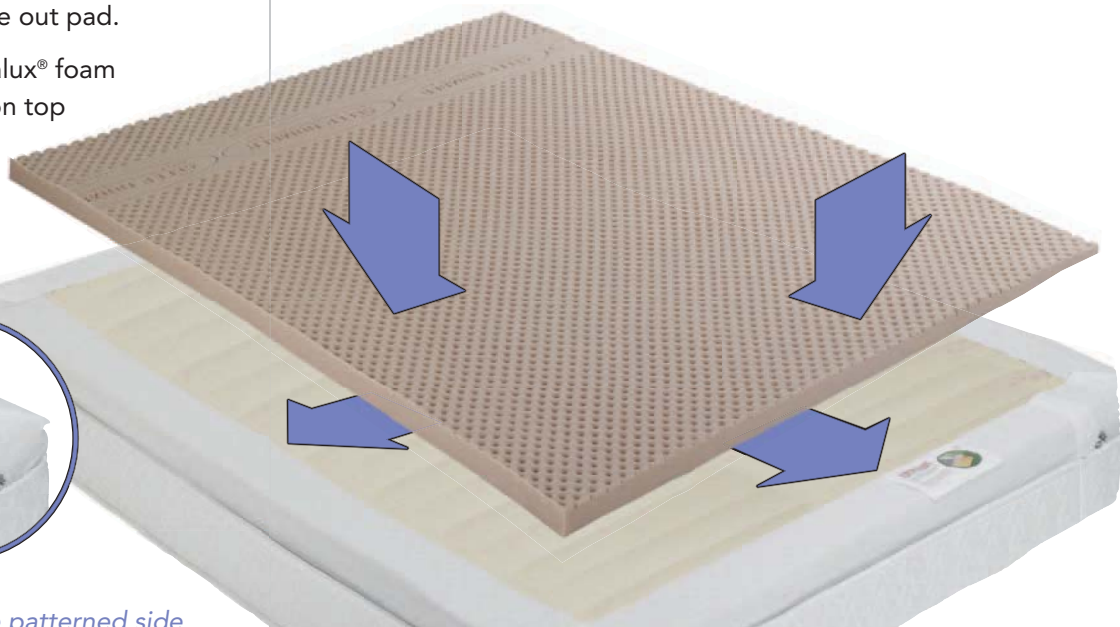
Position the border wrap over foam border walls and air chambers as shown.



9 INSTALL FOAM COMFORT PAD

Carefully shake out pad.

Place the Intralux® foam comfort pad on top of the air chambers.



*Make sure the patterned side is up. Then extend the border wrap over the Intralux® foam comfort pad.*

Foam color and pattern may vary.