

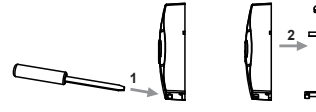


Model ST-1601

Wireless push button

To install or replace the battery in the wireless push button.

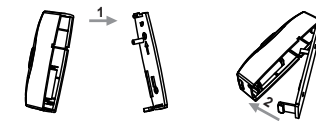
1. Remove the back cover of the push button.



2. Install the A23 (12 volt) battery with the negative side of the battery (-) toward the spring and the positive side of the battery (+) toward the positive battery holder as shown below.



3. Replace back cover as shown below.



Chime Tune Setting

All wireless chimes may have more than one push button. The chime tune for each push button is set with dip switches numbered 1-3.

Single Push Button Kit: If you purchased a kit with a single push button, the chime tune will be set to Ding Dong from the factory.

Dual Push Button Kit: If you purchased a kit with two push buttons, one push button will be set to Ding Dong and the other push button will be set to Westminster from the factory.

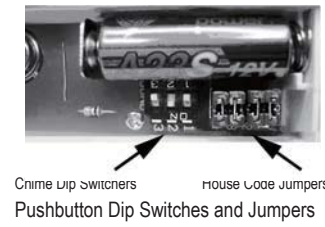
The following instructions explain how to change the tune on any wireless push button.

1. Remove the battery from the push button transmitter.
2. Locate the 3 dip switches shown below.
3. Select the desired chime sound from the table below.

Chime Sound Table

Position	1	2	3
Westminster	ON	OFF	OFF
Ding Dong	OFF	ON	OFF
Knock	OFF	OFF	ON
Bronze Chime	ON	ON	OFF
Cuckoo Clock	ON	OFF	ON
Foghorn	OFF	ON	ON
Gong	ON	ON	ON

ON: Switch On
OFF: Switch Off

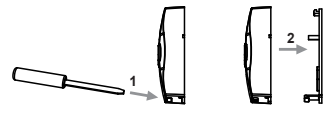


Setting The House Security Code Setting

Each chime component has 4 jumpers for setting the house security code. In most cases you will not need to change the factory settings for the house security code. If your chime activates intermittently or does not work at all, you may be able to solve the problem by changing your security code.

The chime and pushbutton must be set to the same house security code for the combination to operate together.

1. Remove power or batteries from the chime.
2. To remove the batteries from the pushbutton, open the pushbutton case as shown below.



3. Locate the House Security Code door and screw located on the back of the Chime. Remove the screw and take off the door.
4. Locate the chime and pushbutton jumpers shown below.



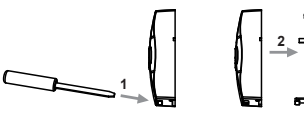
House Security Code Jumpers

5. To change the house code, add, or remove jumpers as needed. It is recommended to change only one jumper at a time and then test the system for proper operation. The jumpers on the chime and pushbutton must match exactly.

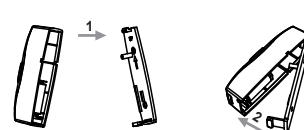
Push Button Mounting Instructions

Note: Avoid mounting on metal surfaces, as it may result in a reduced range of transmission. Do not mount in an area where exposed to direct rain.

a. Removing the back cover

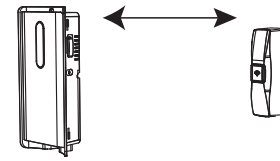


b. Replacing the back cover

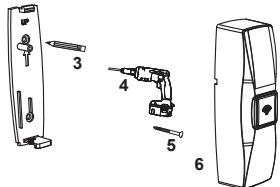


1. Push buttons are typically mounted at the same height as the door knob or handle (between 36" and 44" above the floor).
2. Before mounting, choose a mounting location that is not farther than 45 meters from the chime unit location.

No further than 45 meters



3. Use back cover of push button as a template to mark two screw holes.



4. Drill two holes with 1/16" drill in marked locations.
5. Secure back cover to the mounting surface with the 3x20mm screws.
6. Install the battery supplied with the kit, observing proper polarity.
7. Press front housing onto back cover.
8. Test Operations, if chime does not work, see TROUBLESHOOTING.

Operation

Troubleshooting

Chime doesn't work:

1. Make sure push button switch is depressed and held for at least 1 second.
2. Make sure plastic tag is removed from battery.
3. Make sure house code switches 1-4 on chime and push button match exactly.
4. Verify battery orientation in push button.
5. Try fresh batteries.
6. Make sure chime is not farther than 45 meters away from push button.
7. Ensure push button is not mounted on metal, near metal studs, or near the floor.
8. Try a new location for the chime.

Functional range may be adversely affected by one or more of the following factors: weather, radio frequency interference, low transmitter battery and obstructions between the transmitter and receiver.

CHIMELORD is a trademark of Smart Technologies & Investment Ltd.
www.chimelord.com
Made in China

FCC WARNING

This device complies with Part 15 of the FCC Rules. Operation is subject to the following two conditions:

- (1) this device may not cause harmful interference, and
- (2) this device must accept any interference received, including interference that may cause undesired operation.

NOTE: The manufacturer is not responsible for and radio or TV interference caused by unauthorized modifications to this equipment. Such modifications could void the user's authority to operate the equipment.