



WA-2200-O, WA-2200-O-1

802.11ac 2x2 Wave 2 Access Point,
Outdoor



BakPak
Lite

QUICK START GUIDE

WA-2200-O features

- 802.11ac dual-band 2×2 wireless technology
- Advanced Wave 2 wireless technology with MU-MIMO and beamforming
- Powered by PoE+, with 2 Gigabit Ethernet ports
- Single- to multi-AP cloud configuration with built-in BakPak Lite
- Outdoor access point with UV protection material
- Can operate in temperatures from -20°C to 65°C (-4°F to 149°F)
- For information on using the AP, go to pkdge.co/wa2200-ug.

System requirements

- Windows or Mac PC with an Ethernet port and Google Chrome or Mozilla Firefox

Specifications and credentials

- Operation mode: Access Point
- IP address: If no DHCP server is detected, the default IP address is automatically set to **192.168.1.21**.
- Username/Password (default): **admin/password**
- SSIDs (default): **Pakedge_Main** (5 GHz), **Pakedge_Alt** (2.4 GHz), security/password: WPA2-PSK/**pakedgewireless**
- Guest SSIDs (default): **PakedgeGuest_Main** and **PakedgeGuest_Alt**, security/password: WPA2/**pakedgeguest**
- Factory default transmit power: 13 dBm for 2.4 GHz and 18 dBm for 5 GHz.
- PoE power draw: 18.34W

Planning the wireless network

For tips on planning your network and positioning the access points, see:

- Wireless Design Guide at pkdge.co/wirelessdesign
- Best Practices for Access Point Placement Guide at pkdge.co/ap-bp



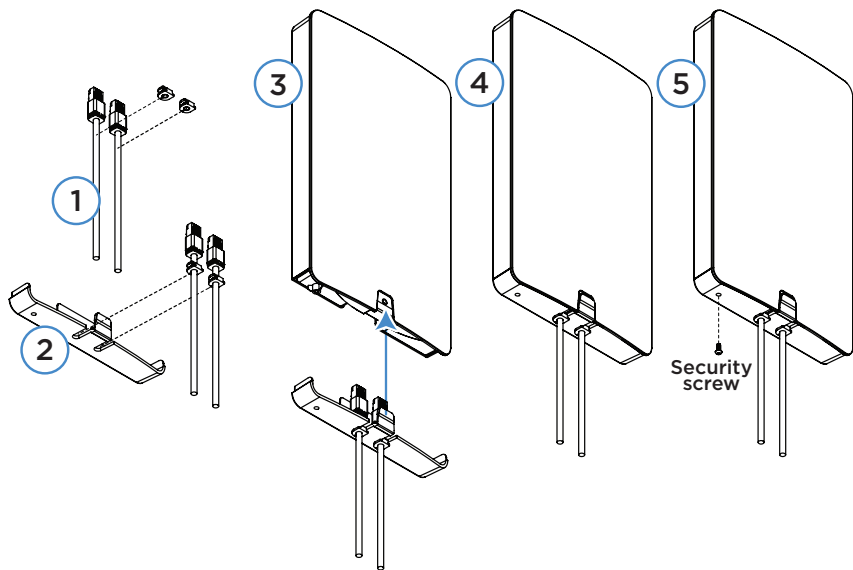
Wireless
Design
Guide



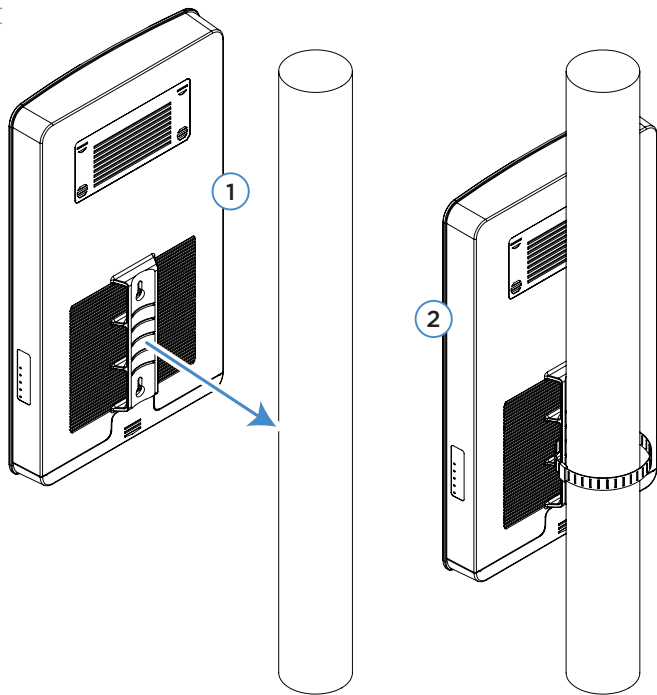
AP
Placement
Guide

Mounting options

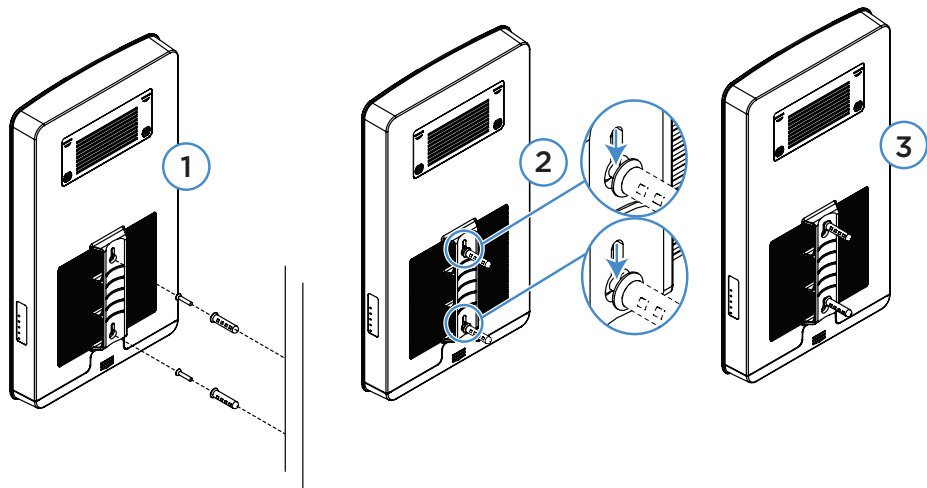
Attaching Ethernet port cover and security screw



Pole mount



Wall mount



Powering up

The AP is powered by PoE+.

To power up the access point:

- 1 Connect power using a PoE+ injector or switch (both sold separately).

The access point should now be up and running with its default settings. It does not need to be configured to be functional. To make changes to the SSID and security settings, access the AP using a web browser.

Logging in

To log in to the access point:

- 1 Connect the access point to your PoE+ switch or injector with an Ethernet cable.
- 2 Log in to your Pagedge router to find the IP address assigned to the access point under the *DHCP Client Table*.

Tip: If you do not have a router in your network that distributes IP addresses, you can try to access the access point through its default IP address of **192.168.1.21**.

- 3 Enter that IP address into a web browser to open the access point interface. The *Sign In* page opens.

Note: Because the AP uses self-signed certificates for secure connection to the web browser, a security message will appear. There is no risk in proceeding to the AP's web interface, and communications will remain secure.

- 4 In the *username* box, type **admin**. In the *password* box, type **password**, then click **Sign In**. The first time you log in, the *Configure* page opens.

- 5 Enter and verify a new username and password (required) before continuing, then click **Apply** to complete the setup.

Overview Connections **Configure** Backup/Restore Logs Advanced

This product is not managed by BakPak [Click here to enroll](#)

Edit Login Credentials

Username: Current Password: New Password:

General Device Information

Friendly Device Name: Device Location:

Caution: For international models, you must change the *Country Code* (a drop-down list defaulting to **GB - United Kingdom**), to the specific country of operation.

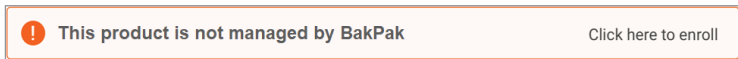
Note: Refer to the user guide (pkdge.co/wa2200-ug) for detailed configuration information.

Registering your device with BakPak Lite

You can connect your access point to your existing BakPak account or create a new account to manage all of your BakPak network management agents.

To register your device to your BakPak account:

- 1 In the device's *Connections* tab, to the right of the “This product is not managed by BakPak” message, click **Click here to enroll**.



- 2 Follow the on-screen instructions to complete your device registration.

A screenshot of a web form titled "Register Management Agent" in blue. Below the title is a note: "Only BakPak Lite supported devices can be manually added." The form contains three input fields: "SERIAL NUMBER" (with a small "SERIAL NUMBER" label above it), "MAC ADDRESS" (with a small "MAC ADDRESS" label above it), and "AGENT NAME" (with a small "AGENT NAME" label above it). The "AGENT NAME" field has the word "Name" inside it. At the bottom are two buttons: "Register Agent" in blue and "Cancel" in grey.

Creating a BakPak site for WA-2200 Series APs

To begin managing and configuring the AP, you need to create a BakPak site for it.

To create a BakPak site:

- 1 Log in to your BakPak account, then click **Add Site** to create a site.
- 2 In the *Management Agent* list, select the first WA-2200-O, complete the site information, then click **OK**.

[Add management agent site](#)
Complete the basic information about this site. Note that a Management agent is the network device which hosts BakPak, such as an RK-1, or an NK-1. When you are finished, click "Next" and BakPak will then scan and detect all the devices on that site.

MANAGEMENT AGENT

George WA-2200-O ▾

SITE NAME *

ⓘ

SITE ADDRESS

DEVICE NAME *

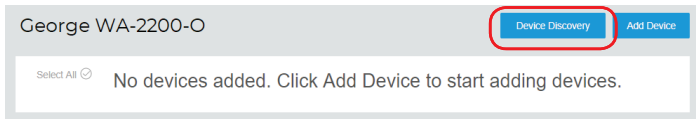
DEVICE LOCATION

Adding WA-2200 Series APs to the site

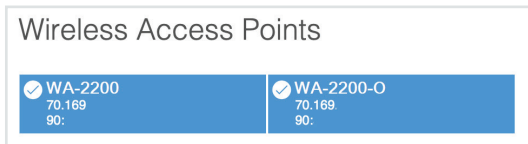
After the BakPak site is created, the WA-2200-O will act as the “master AP” for adding more WA-2200 Series APs to the site. For the full multi-AP deployment guide, see pkdge.co/wa2200-multi.

To add APs and provision them with the existing configuration:

- 1 Make sure that the master AP is already configured (through the local UI or BakPak), and that the additional APs are turned on for at least five minutes and connected to your network.
- 2 In BakPak, select the new WA-2200-O site, then click **Device Discovery**.



Any additional WA-2200 Series APs are discovered and appear as tiles that can be selected (already selected by default).



- 3 Click **OK**. The APs are added to the site.
- 4 To apply the master AP's settings to the new APs, in the BakPak site select the master AP, then complete the site information and click **Save & Apply Multiple** at the bottom. The settings are copied to the new APs.

Technical Support

For technical help:
[dealer.pakedge.com](mailto:support@pakedge.com)
support@pakedge.com
(650) 385-8703

For regulatory information:
pakedge.co/regulatory



11734 S. Election Road
Draper, UT 84020
Main: (650) 385-8700 Fax: (650) 685-5520

www.pakedge.com
sales@pakedge.com
©2019 Control4. All rights reserved.

Latest version at
pakedge.co/wa2200o-qsg



200-00634-A 2019-07-12 MS