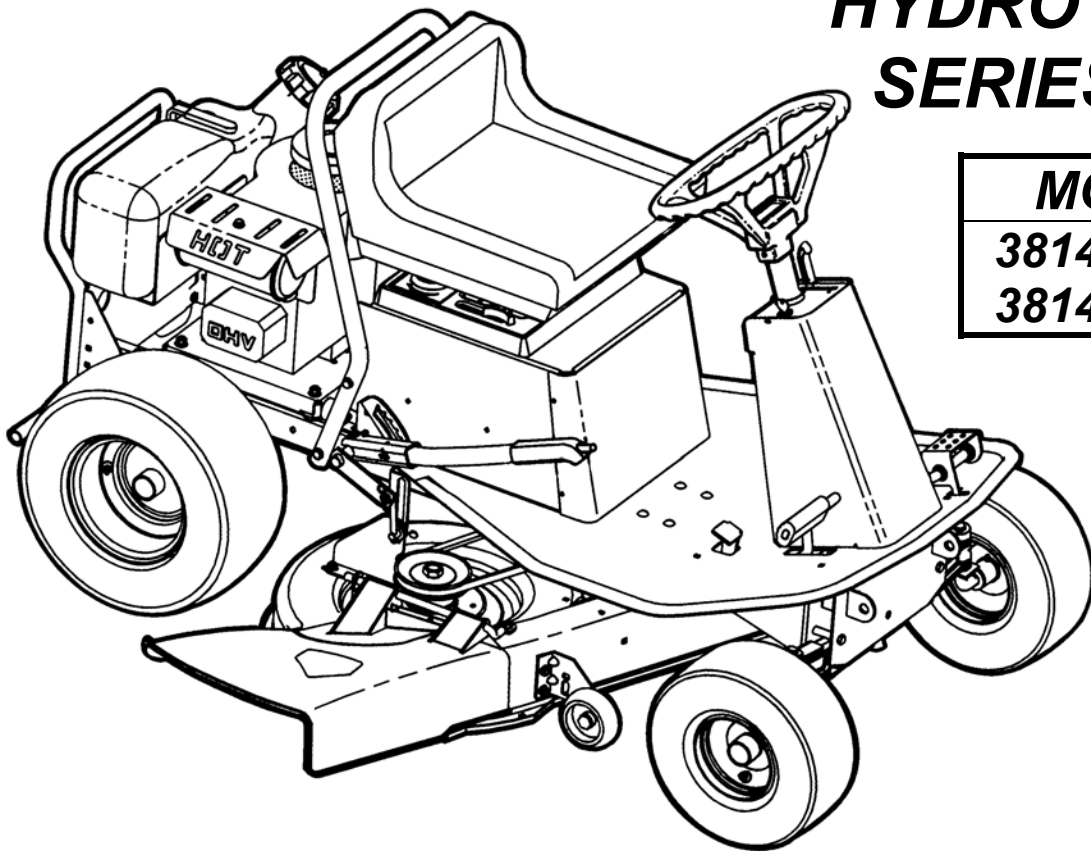


SNAPPER®

REAR ENGINE RIDING MOWER HYDRO DRIVE SERIES 0 & 1



MODELS
381450HBVE
381451HBVE


CONTENTS

DESCRIPTION	PAGE(S)	DESCRIPTION	PAGE(S)
DECALS	2-3	BRAKE & FORWARD/REVERSE CONTROL ASSY'S	18-19
FRONT AXLE & WHEEL ASSEMBLIES	4-5	HYDRO DRIVE & REAR WHEEL ASSEMBLIES	20-21
FRAME ASSEMBLY	6-9	DECK LIFT & BLADE ENGAGEMENT ASSEMBLIES.....	22-23
STEERING ASSEMBLY	10-11	38" CUTTING DECK ASSEMBLY	24-27
SEAT & SEAT MOUNT ASSEMBLIES.....	12-13	CENTER SPINDLE ASSEMBLY	28-29
ENGINE PLATE ASSEMBLY	14-15	ELECTRICAL COMPONENTS.....	30
ENGINE & FUEL TANK ASSEMBLIES.....	16-17	WIRING SCHEMATIC	31


SNAPPER® McDonough, GA., 30253 U.S.A.

DECALS

CLUTCH/BRAKE





ENGAGE BRAKE
RELEASE CLUTCH



RELEASE BRAKE
ENGAGE CLUTCH

ON
↑
↓
OFF

BLADE CONTROL

WARNING


AVOID SERIOUS INJURY OR DEATH

DO NOT ALLOW CHILDREN (PRE-TEENAGERS) ON MACHINE (EVEN WITH BLADE OFF) OR IN YARD WHEN MOWING. KEEP OTHERS SAFELY AWAY FROM THE OPERATING AREA.


AVOID SUDDEN TURNS.

MAKE SURE SHIELDS, GUARDS, SWITCHES, AND OTHER SAFETY DEVICES ARE IN PROPER POSITION AND FUNCTIONING.


STOP BLADE BEFORE PUTTING FOOT ON GROUND OR LEAVING THE SEAT.




READ ALL MANUALS AND INSTRUCTIONS FURNISHED WITH THE MACHINE.



LOOK DOWN AND BEHIND MACHINE BEFORE AND WHILE BACKING.



CLEAR MOWING AREA OF WIRE, ROCKS, AND OTHER OBJECTS THAT COULD CAUSE INJURY IF THROWN BY BLADE.




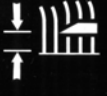
DO NOT MOW ON SLOPE OR IN ANY AREA WHERE STABILITY OR TRACTION IS IN DOUBT. IF YOU CAN NOT BACK-UP A SLOPE, DO NOT MOW ON IT.

DO NOT MOW ACROSS FACE OF SLOPE. REDUCE SPEED AND AVOID SHARP TURNS ON SLOPE.


AVOID UPHILL STARTS. IF MACHINE IS STOPPED GOING UP A HILL, TURN BLADE OFF AND BACK DOWN THE SLOPE.

SPEED CONTROL





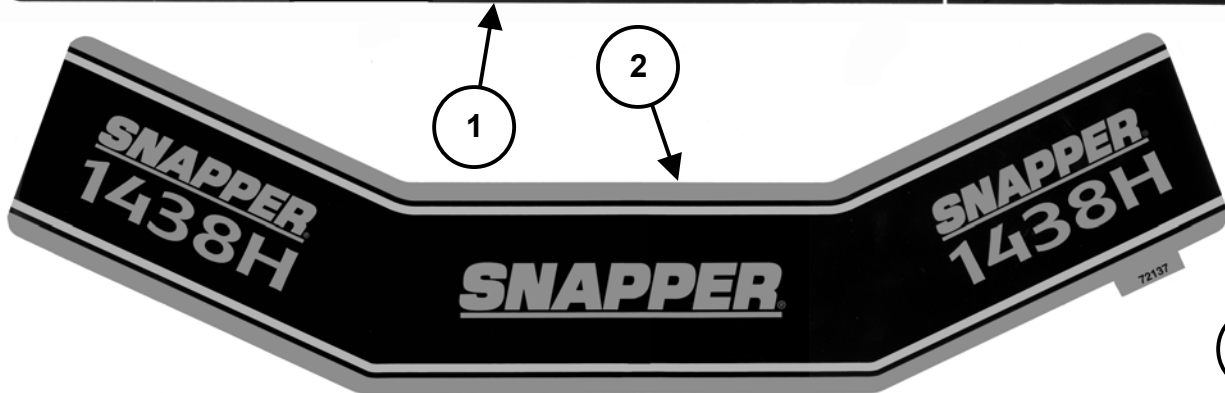
LOW



HIGH

CUTTING HEIGHT

72207



ROLL RELEASE
ROLL ← → DRIVE

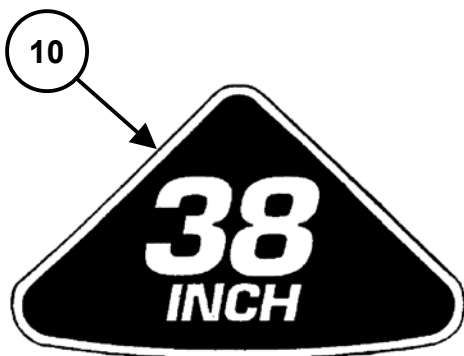
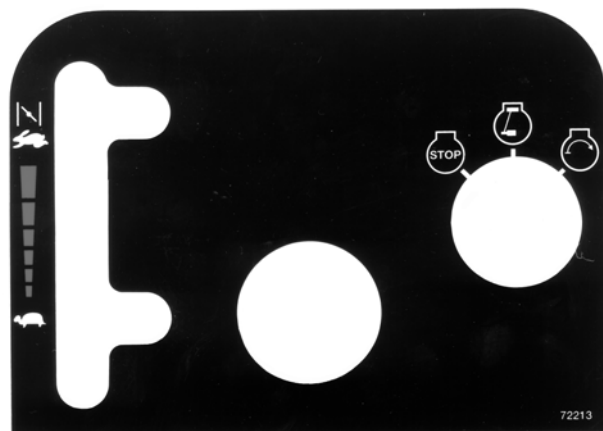
**REMOVE BATTERY BEFORE
STANDING MOWER ON END
FOR MORE THAN 2 HOURS**

1-2358

**MODEL CERTIFIED BY
INDEPENDENT LABORATORY
PASSES ANSI B71.1-1996
SAFETY STANDARDS**

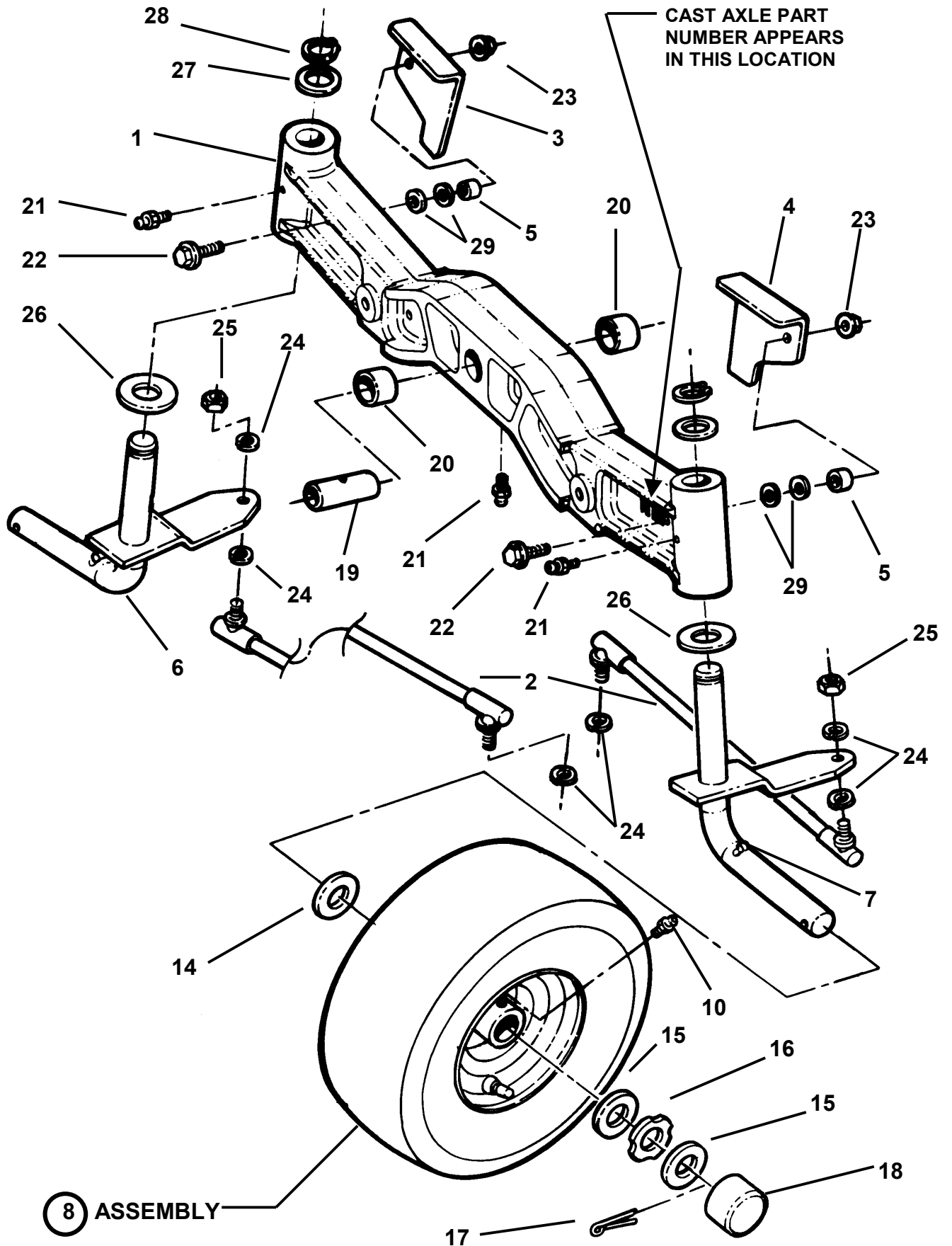
46562

ITEM	PART NO.	DESCRIPTION
1	7-2207	DECAL, Control/Warning
2	7-2137	DECAL, Steering Column
3	7-2420	DECAL, Roll Release
4	1-2358	DECAL, Battery
5	4-6562	DECAL, Certification



ITEM	PART NO.	DESCRIPTION
6	7-2136	DECAL, Seat Pedestal
7	4-6720	DECAL, Chute/Deflector
8	7-2213	DECAL, Throttle Control
9	2-6831	DECAL, CPSC (Heavy Adhesive)
10	2-6154	DECAL, 38 Inch Deck
11	7-3335	DECAL, OPEI (Ride On)

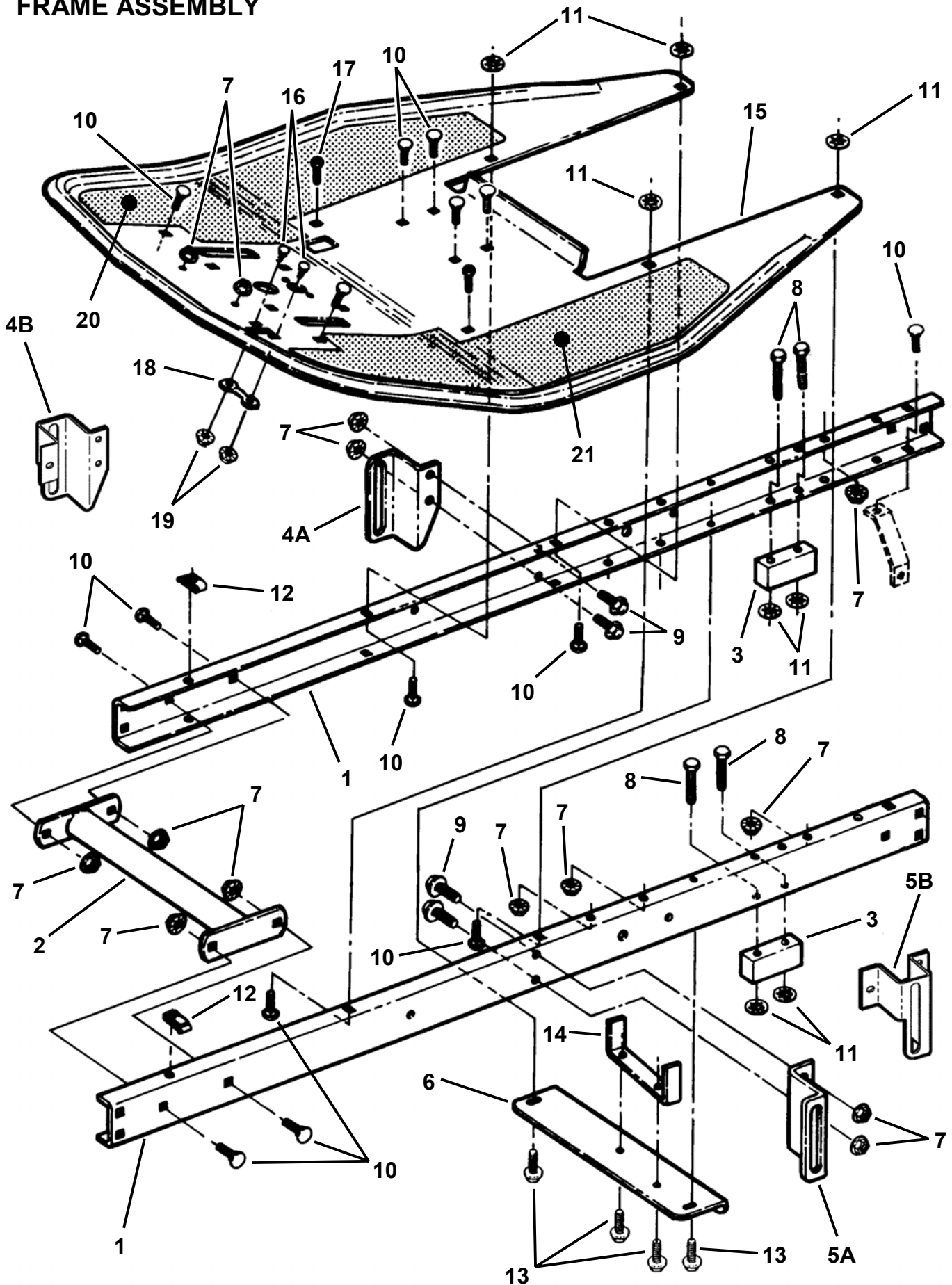
FRONT AXLE & WHEEL ASSEMBLIES



FRONT AXLE & WHEEL ASSEMBLIES

ITEM	PART NO.	DESCRIPTION
1	7-2411	AXLE, Cast OPPLT (Series 1) (shown)
--	2-8647	AXLE, Cast (Series 0)
2	4-7111	TIE ROD (2)
3	4-6954	STOP, R.H. Steering
4	4-6953	STOP, L.H. Steering
5	4-7077	SPACER, Steering Stop (2)
6	7-2204	WELDMENT, R.H. Spindle
7	4-6715	WELDMENT, L.H. Spindle
8	5-7924	ASSEMBLY, Front Wheel (Incl. items 9 thru 13) (2)
9	5-4684	ASSEMBLY, Wheel (Incl. items 10 & 11)
10	1-3876	FITTING, Lube 1/4-28 Tapered Thread
11	2-8722	BEARING, Front Wheel (2)
12	4-7116	TIRE, 13 x 5.00-6 Square Shoulder
13	1-2234	VALVE STEM
14	3-4453	WASHER, 3/4" I.D. x 1-1/2" O.D. x 1/8" Thick Flat (4)
15	2-9617	WASHER, 3/4" I.D. x 1-5/16" O.D. x 1/16" Thick Flat (2)
16	2-9618	WASHER, Hub Cap Retaining (2)
17	9-1516	PIN, 5/32 x 1" Cotter (2)
18	1-1022	HUB CAP (2)
19	2-8689	SPACER, 1/2" I.D. x 3/4" O.D. x 1.78 Long
20	1-2706	BEARING, .875 O.D. x .7 Sleeve (2)
21	1-4669	FITTING, 3/16 Lube (3)
22	9-0700	BOLT, 5/16-18 x 1-1/2" Flange Head Lock, Grade 5 (2)
23	9-1601	NUT, 5/16-18 Hex Flange Lock, Grade 5 (2)
24	9-1315	WASHER, 5/16 Split Lock (6)
25	9-1297	NUT, 5/16-24 Hex, Grade 5 (2)
26	3-1036	WASHER, Thrust (2)
27	1-0935	WASHER, 3/4" I.D. x 1-1/8" O.D. x 1/16" Thick Flat (2)
28	1-0746	RING, 3/4" External Retaining (2)
29	9-1296	WASHER, .344 I.D. x 11/16 O.D. x 1/16" Thick Flat (4)

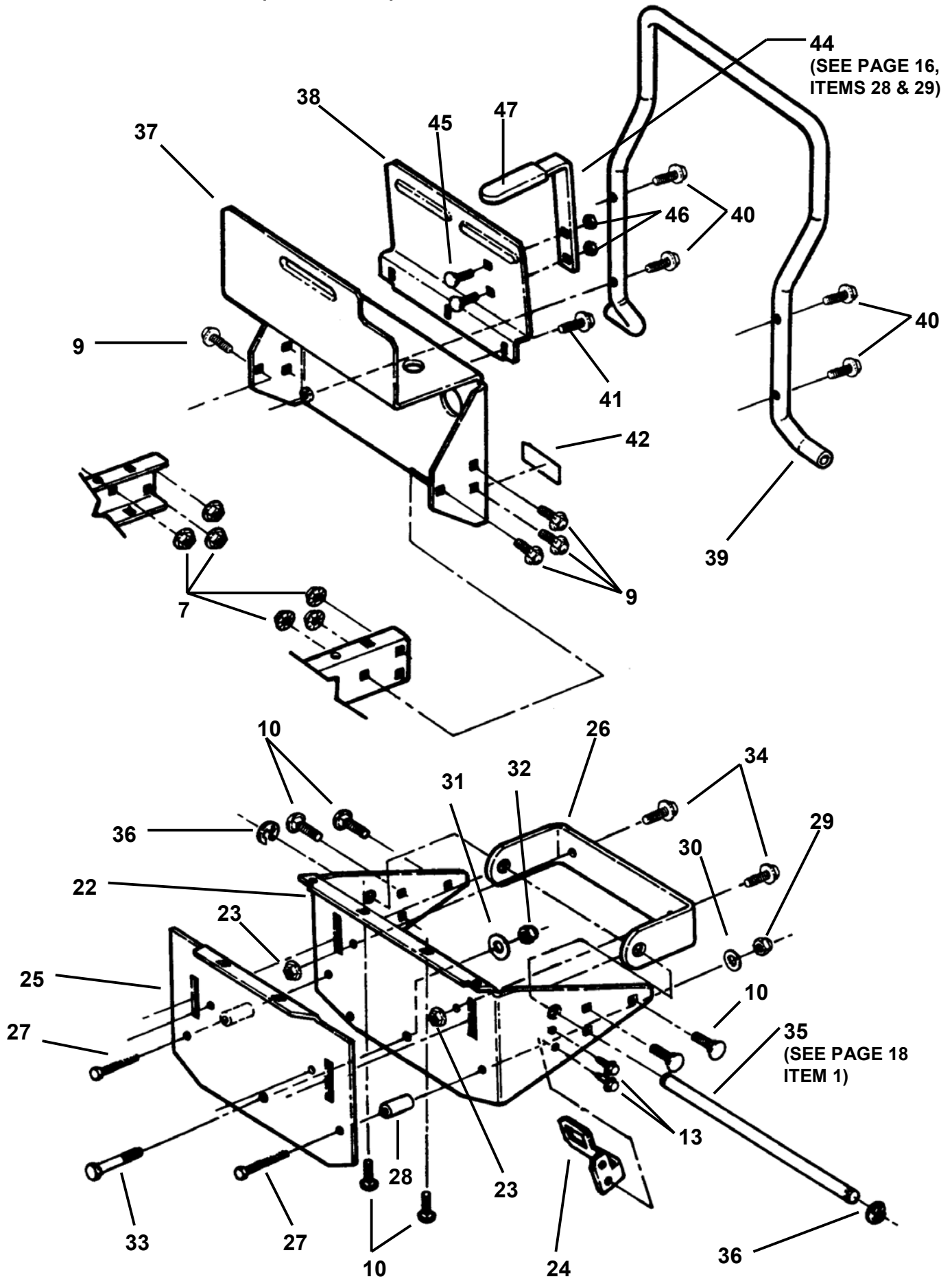
FRAME ASSEMBLY



FRAME ASSEMBLY

ITEM	PART NO.	DESCRIPTION
1	4-5299	FRAME RAIL, L.H. & R.H. (2)
2	4-6725	WELDMENT, Frame Reinforcement Tube
3	4-1853	SPACER BLOCK, Hydro (2)
4A	5-8288	GUIDE, Deck R.H.
4B	7-4219	GUIDE, Deck R.H.
5A	5-8289	GUIDE, Deck L.H.
5B	7-4220	GUIDE, Deck R.H.
6	5-8257	CHANNEL, Belt Finger
7	9-1601	NUT, 5/16-18 Hex Flange Lock, Grade 5 (20)
8	9-1058	SCREW, 5/16-18 x 3-3/4" Hex Head Cap (4)
9	9-1510	BOLT, 5/16-18 x 5/8" Hex Flange Lock, Grade 5 (10)
10	9-1508	BOLT, 5/16-18 x 3/4" Short Neck Carriage, Grade 5 (15)
11	1-1791	RETAINER, 5/16" Bolt (8)
12	1-6116	NUT, 5/16" Push On (2)
13	9-1084	SCREW, 1/4-20 x 3/8" Hex Washer Self-Tap (6)
14	5-8366	BELT GUIDE, Rear
15	4-5336	FLOOR PAN
16	9-0530	BOLT, #10-24 x 1/2" Short Neck Carriage, Grade 2 (2)
17	9-1000	SCREW, 5/16-18 x 7/8" Truss Head Torx (2)
18	7-2124	STOP, Park Brake
19	9-1079	NUT, #10-24 Hex Flange Lock (2)
20	7-2217	FLOOR MAT- R.H.
21	7-2172	FLOOR MAT- L.H.

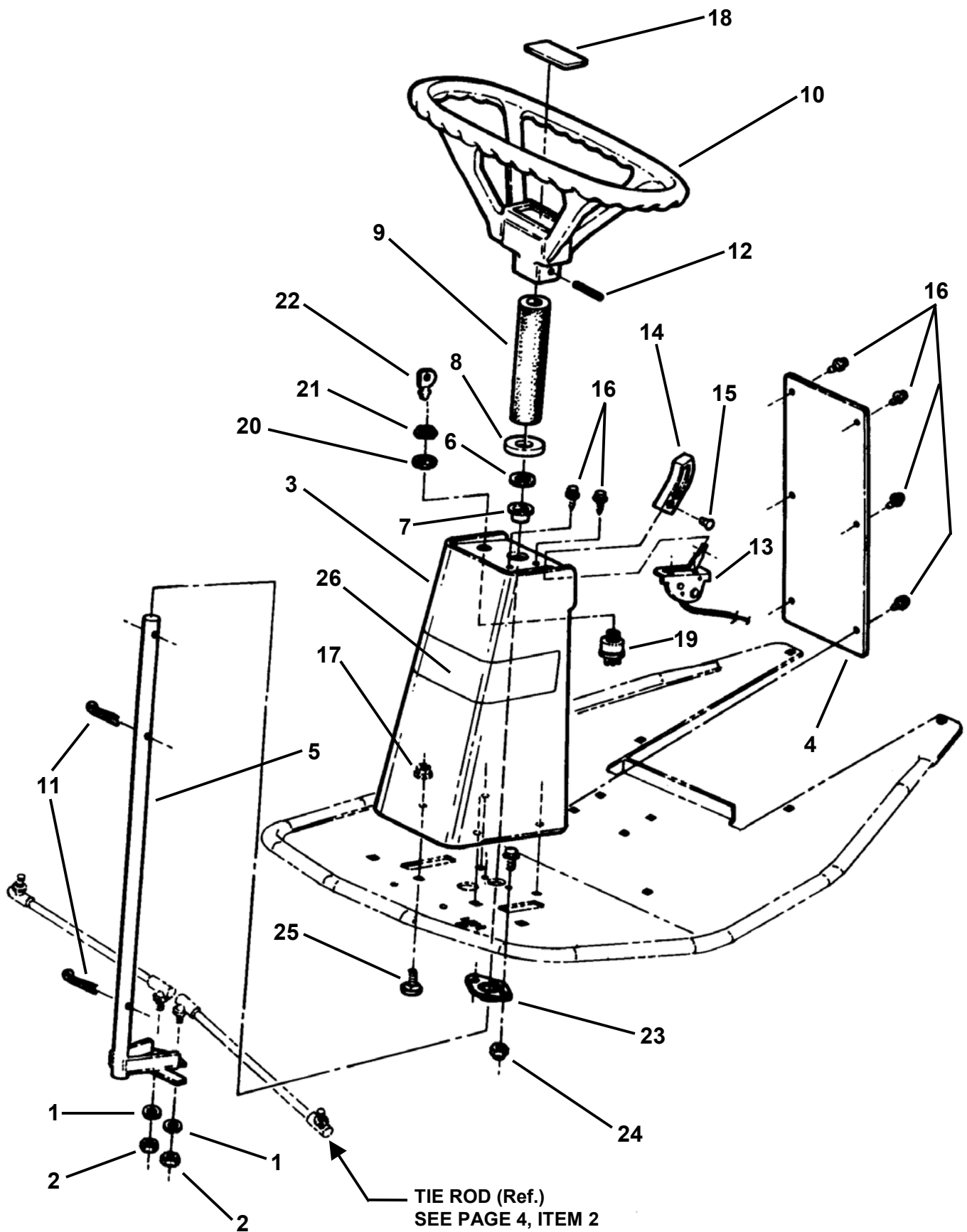
FRAME ASSEMBLY (continued)



FRAME ASSEMBLY (continued)

ITEM	PART NO.	DESCRIPTION
22	4-5309	ATTACHMENT PLATE, Front Frame
23	9-0613	NUT, 3/8-16 Hex Flange Lock (9)
24	3-4724	BRACKET, Switch
25	4-5324	ATTACHMENT PLATE, Front Axle
26	7-1925	BRACKET, Attachments
27	9-0795	SCREW, 3/8-16 x 2-3/4" Hex Head Cap, Grade 5
28	2-8666	SPACER, .19 I.D. x .5 O.D. x 1.8 Long (2)
29	7-6979	NUT, 3/8-16 Hex Nyloc (2)
30	9-0122	WASHER, 3/8" SAE Flat (2)
31	9-0250	WASHER, 1/2" SAE Flat
32	9-1121	NUT, 1/2-13 Hex Nyloc
33	9-1694	SCREW, 1/2-13 x 3" Hex Head Cap, Grade 5
34	9-0612	BOLT, 3/8-16 x 3/4" Hex Flange Lock (2)
35	4-7222	SHAFT, Forward/Reverse/Brake Pedals
36	7-1953	RING, External Retaining (5/8" Shaft) (2)
37	4-5301	ATTACHMENT PLATE, Rear Frame
38	5-8133	BRACKET, Fuel Tank
39	3-3587	BUMPER, Rear
40	9-1270	SCREW, 5/16-18 x 1-3/4" Hex Washer Self-Tap (4)
41	9-1523	SCREW, 5/16-18 x 5/8" Hex Washer Self-Tap (3)
42	7-2420	DECAL, Roll Release
44	7-2533	BRACKET, Fuel Tank
45	9-0803	BOLT, 1/4-20 x 5/8" Flat Head Square Neck, Grade 2 (2)
46	9-1584	NUT, 1/4-20 Hex Flange Lock, Grade 5 (2)
47	1-4755	COVER, Vinyl

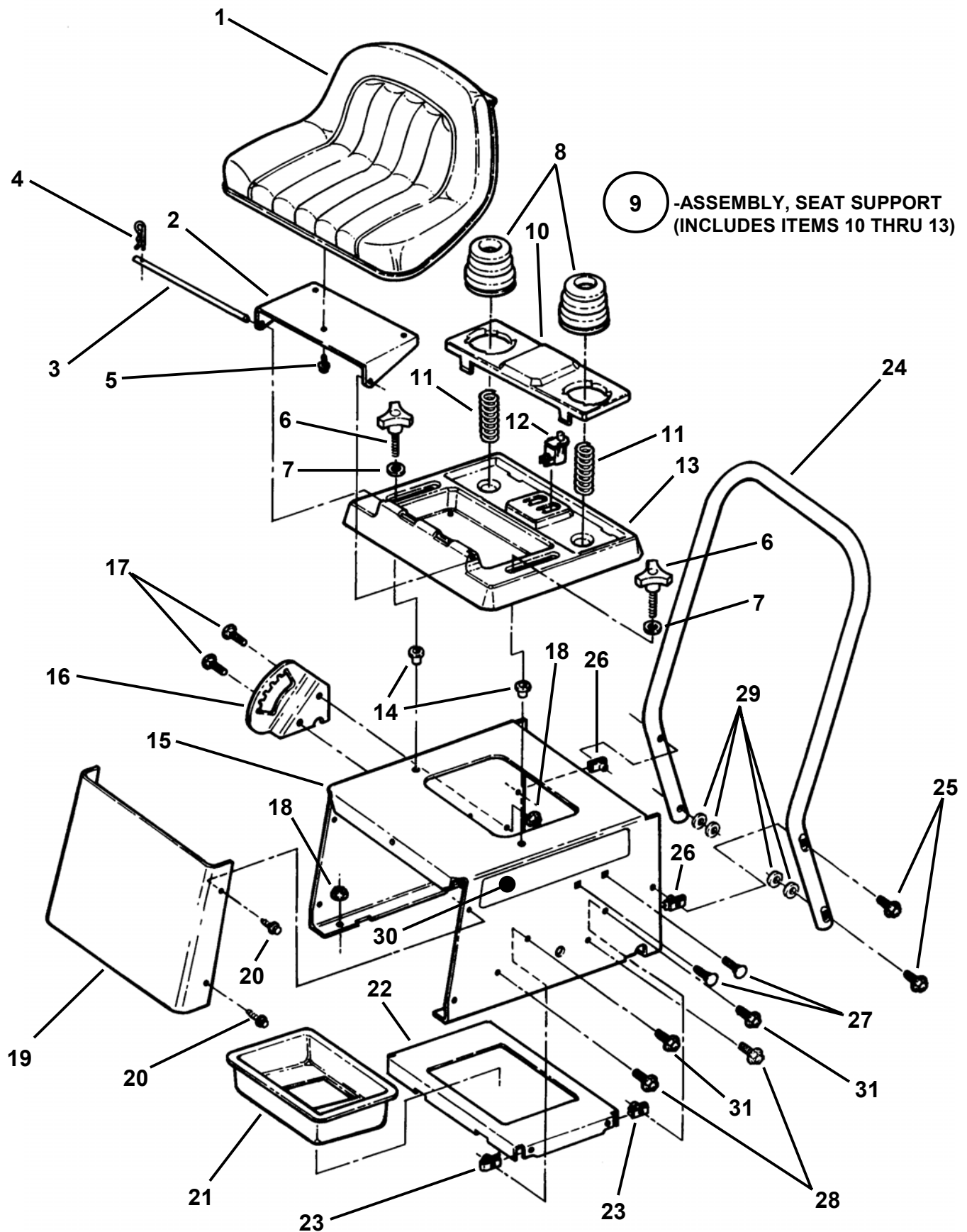
STEERING ASSEMBLY



STEERING ASSEMBLY

ITEM	PART NO.	DESCRIPTION
1	9-1315	WASHER, 5/16 Split Lock (2)
2	9-1297	NUT, 5/16-24 Hex, Grade 5 (2)
3	5-8078	WELDMENT, Steering Column
4	4-7106	COVER PLATE, Steering Column
5	4-6726	WELDMENT, Steering Shaft
6	1-0935	WASHER, 3/4" I.D. x 1-1/8" O.D. x 1/16" Thick Flat
7	1-0986	BEARING, Nylon
8	2-3671	COVER, Steering Shaft
9	7-2594	FOAM COVER, Steering Shaft (6-1/8" Long)
--	2-3667	FOAM COVER, Steering Shaft (8-1/4" Long)
10	5-1941	ASSEMBLY, Steering Wheel (Includes Item 18)
11	9-0364	PIN, 5/32 x 1" Cotter (2)
12	1-3862	PIN, 1/4 x 1-1/2" Roll
13	4-6956	CABLE, Throttle
14	2-3655	KNOB, Throttle
15	7-1921	RIVET, Plastic Snap
16	9-0913	SCREW, #10-24 x 1/2" Hex Washer Self-Tap (Torx) (8)
17	9-1601	NUT, 5/16-18 Hex Flange Lock, Grade 5 (4)
18	2-3781	LOGO, Snapper (Steering Wheel)
19	2-6343	SWITCH, Ignition
20	9-0880	WASHER, 5/8" Internal Tooth Lock
21	1-2685	NUT, 5/8-32 Special Hex
22	1-1138	KEY (Pair)
23	2-6196	BEARING, .75 I.D. PM Flange
24	7-6978	NUT, 1/4-20 Hex Nyloc (2)
25	9-1508	BOLT, 5/16-18 x 3/4" Short Neck Carriage, Grade 5 (4)
26	7-2137	DECAL, Steering Column
27	9-1495	SCREW, 1/4-20 x 3/4" Hex Head Cap, Grade 5 (2)

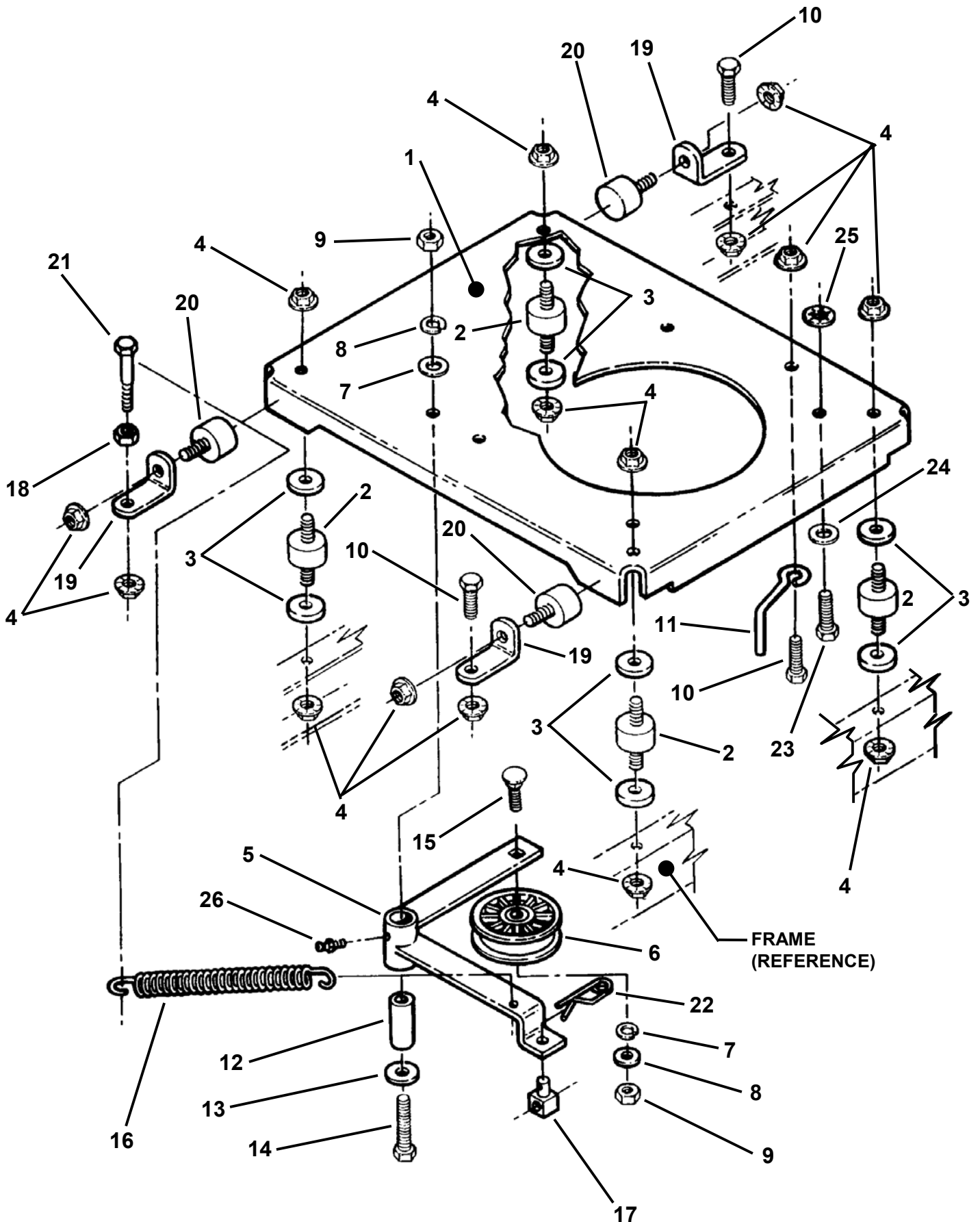
SEAT & SEAT MOUNT ASSEMBLIES



SEAT & SEAT MOUNT ASSEMBLIES

ITEM	PART NO.	DESCRIPTION
1	2-8621	SEAT (Series 1)
--	4-6221	SEAT (Series 0)
2	3-3318	BRACKET, Seat Support
3	7-4452	ROD, Seat Hinge
4	9-1503	PIN, 3/32 x 1-1/2" Hair
5	9-1525	BOLT, 5/16-18 x 1/2" Hex Flange Lock, Grade 5 (3)
6	1-7875	KNOB, Seat Adjustment (2)
7	9-1296	WASHER, .344 I.D. x 11/16 O.D. x 1/16" Thick Flat (2)
8	1-9109	RUBBER COVER, Spring (2)
9	5-9215	ASSEMBLY, Seat Support (Includes Items 10 thru 13)
10	2-8580	HOLDER, Seat Cushion
11	7-3266	SPRING, Cushion Holder (2)
12	2-3354	SWITCH, Seat
13	7-4204	SUPPORT, Seat
14	9-1761	RIV-NUT, 5/16-18 Round (2)
15	4-5346	PEDESTAL, Seat
16	4-6752	QUADRANT, Height-of-Cut
17	9-1508	BOLT, 5/16-18 x 3/4" Short Neck Carriage, Grade 5 (2)
18	9-1601	NUT, 5/16-18 Hex Flange Lock, Grade 5 (2)
19	4-6674	COVER, Seat Pedestal Front
20	9-0913	SCREW, #10-24 x 1/2" Hex Washer Self-Tap (Torx) (4)
21	1-7853	TRAY, Battery
22	4-6199	PLATE, Battery Holder
23	2-3295	U-NUT, 1/4-20 (4)
24	4-6203	HANDLE, Grab
25	9-1270	SCREW, 5/16-18 x 1-3/4" Hex Washer Self-Tap (4)
26	1-6116	NUT, 5/16 Push-On (2)
27	9-1530	BOLT, 1/4-20 x 3/4" Short Neck Carriage, Grade 5 (2)
28	9-0699	BOLT, 1/4-20 x 3/4" Hex Flange Lock, Grade 5
29	1-4098	WASHER, 5/16" I.D. x 1" O.D. x 3/32" Thick Flat (4)
30	7-2136	DECAL, Seat Pedestal (2)
31	9-0999	SCREW, 1/4-20 x 5/8 Truss Head Torx (4)

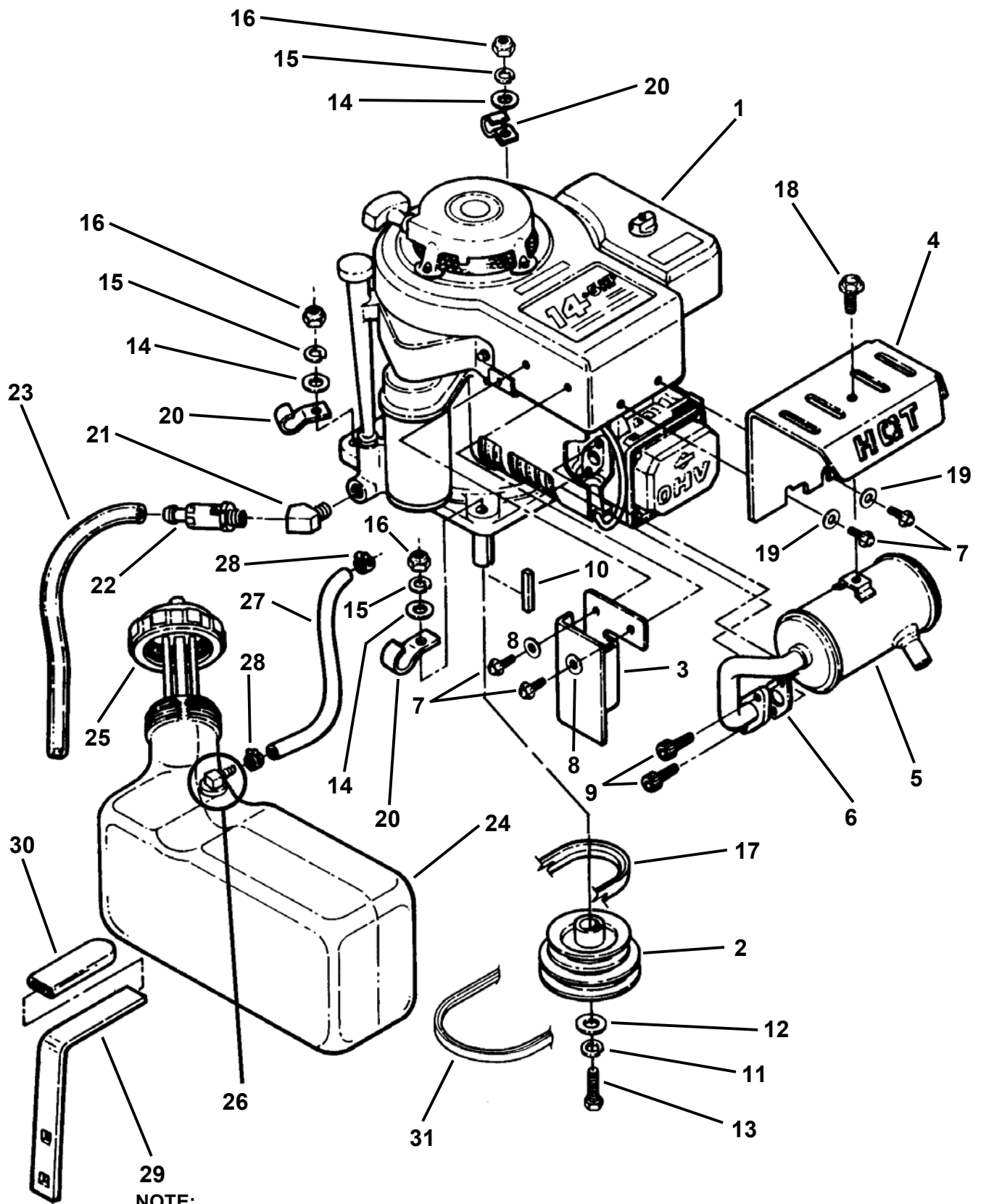
ENGINE PLATE ASSEMBLY



ENGINE PLATE ASSEMBLY

ITEM	PART NO.	DESCRIPTION
1	4-5306	PLATE, Engine
2	7-2362	ISOLATOR, Engine (4)
3	9-1807	WASHER, 7/16" I.D. x 1-3/8" O.D. x 1/4" Thick Flat (8)
4	9-0613	NUT, 3/8-16 Hex Flange Lock (15)
5	4-7079	WELDMENT, Idler/Brake (Incl. Item 26)
6	2-3954	PULLEY, 3.47 O.D. Flat Idler
7	9-1514	WASHER, .406 I.D. x .812 O.D. x .075 Thick Flat (2)
8	9-1320	WASHER, .38 I.D. x .68 O.D. x .09 Thick Flat (2)
9	9-1302	NUT, 3/8-16 Hex, Grade 5 or B (2)
10	9-1891	BOLT, 3/8-16 x 1" Hex Flange Lock, Grade 5 (3)
11	7-2198	GUIDE, Engine Belt
12	7-1698	SPACER, Pivot Collar
13	1-7415	WASHER, Special
14	9-1501	SCREW, 3/8-16 x 2-1/2" Hex Head Cap, Grade 5
15	9-1158	BOLT, 3/8-16 x 1-3/4" Short Neck Carriage, Grade 5
16	2-9272	SPRING, Primary Idler
17	2-4586	SWIVEL, 3/8 Brake Link
18	9-0665	NUT, 3/8-16 Hex Jam
19	7-2363	BRACE, Snubber Mount (3)
20	7-2361	MOUNT, Snubber (3)
21	9-0655	SCREW, 3/8-16 x 1-1/2" Hex Head Cap, Grade 5
22	2-4874	PIN, 1/2" Self-Locking Cotter
23	9-1513	SCREW, 5/16-24 x 1-3/4" Hex Head Cap, Grade 5 (4)
24	9-1296	WASHER, .344 I.D. x 11/16 O.D. x 1/16" Thick Flat (4)
25	1-1791	RETAINER, 5/16" Bolt (Black) (4)
26	1-4669	FITTING, 3/16 Lube

ENGINE & FUEL TANK ASSEMBLIES

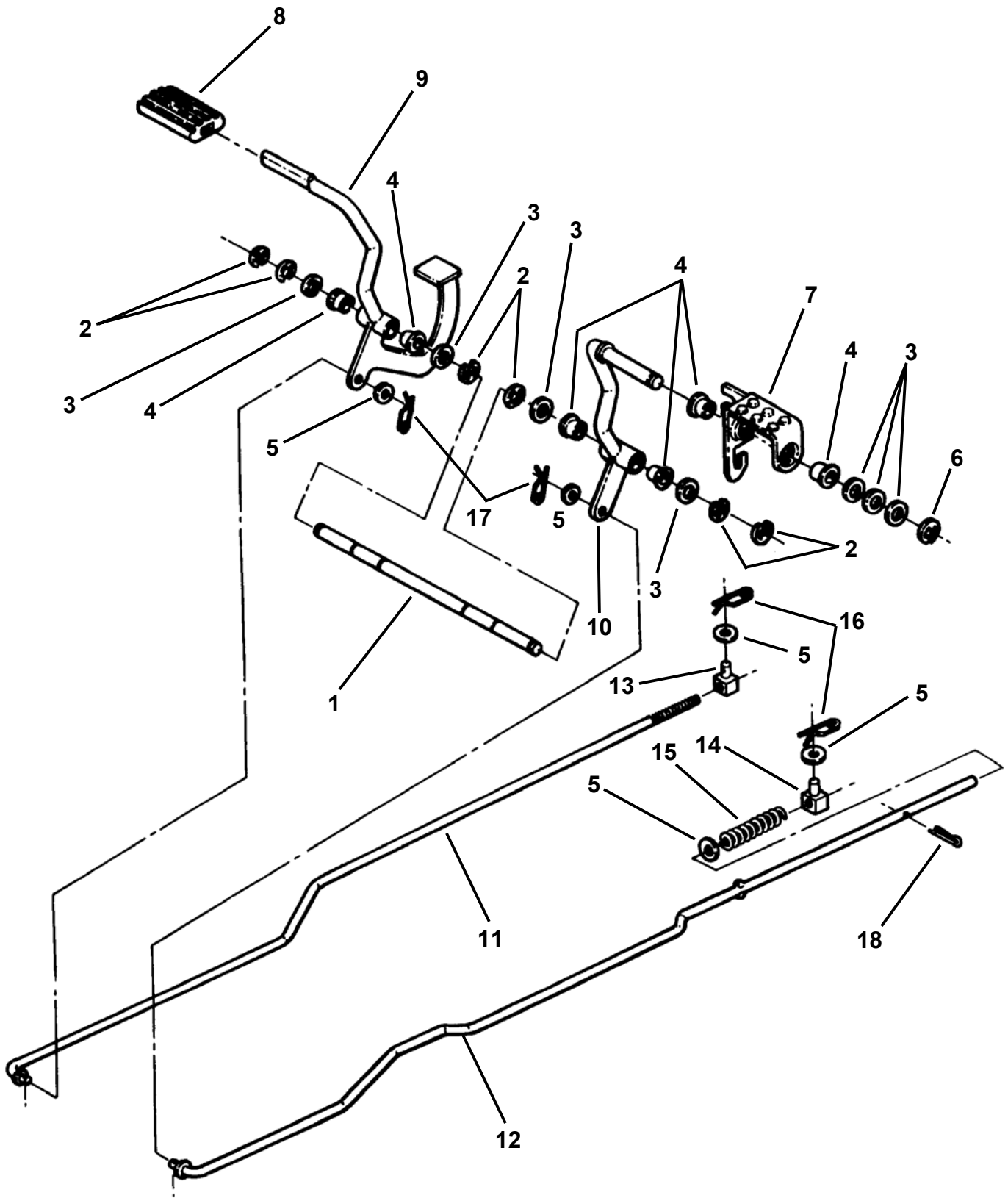


NOTE:
LOCATION & FASTENERS REQUIRED
FOR ITEMS 29 & 30 ARE SHOWN ON
PAGE 8 "FRAME ASSEMBLY"

ENGINE & FUEL TANK ASSEMBLIES

ITEM	PART NO.	DESCRIPTION
1	-----	ENGINE, Briggs 14.5 HP
2	4-6987	PULLEY, Engine, 38 Deck
3	7-2012	SHIELD, Muffler
4	4-7050	HEAT SHIELD, 14.5 HP Briggs Engine
5	7-1939	MUFFLER, 14.5 HP
6	1-5352	GASKET, Muffler
7	9-1906	SCREW, 1/4-20 x 3/4" Hex Head Flange, Grade 5 (4)
8	9-1294	WASHER, 1/4" I.D. x 5/8" O.D. x 1/16" Thick Flat (2)
9	9-1738	SCREW, 5/16-18 x 3/4" Socket Head Cap, Grade 8 (2)
10	1-0210	KEY, 1/4" Square x 2"
11	9-1301	WASHER, 7/16" Split Lock
12	9-1807	WASHER, 7/16" I.D. x 1-3/8" O.D. x 1/4" Thick Flat
13	9-1763	SCREW, 7/16-20 x 1-1/2" Hex Head Cap, Grade 5
14	9-1296	WASHER, .344 I.D. x 11/16 O.D. x 1/16" Thick Flat (4)
15	9-1315	WASHER, 5/16 Split Lock (4)
16	9-1297	NUT, 5/16-24 Hex, Grade 5 (4)
17	4-7117	BELT, Engine to Hydro
18	9-1525	BOLT, 5/16-18 x 1/2" Hex Flange Lock
19	9-1627	WASHER, 1/4" I.D. x 1" O.D. x 1/8" Thick, Flat (2)
20	1-2652	WIRE CLIP, 7/16" (3)
21	9-1849	FITTING, 45 Degree, 3/8 Male-3/8 Female Oil Drain (used on Series 0 only)
22	2-7972	ASSEMBLY, Oil Valve (Drain)
23	9-1855	TUBING, 1/2 x 5/8 x 6" Clear (Drain)
24	5-8307	ASSEMBLY, Fuel Tank (Includes Item 25 & 26)
25	5-8363	ASSEMBLY, Fuel Cap & Fuel Gage
26	5-8308	ASSEMBLY, Fuel Pickup
27	4-7124	HOSE, Fuel 1/4" I.D. x 13-1/2" long
28	1-2222	CLAMP, Hose (2)
29	7-2533	BRACKET, Fuel Tank
30	1-4755	COVER, Vinyl
31	7-1991	BELT, Engine to Deck
32	1-5352	GASKET, Muffler

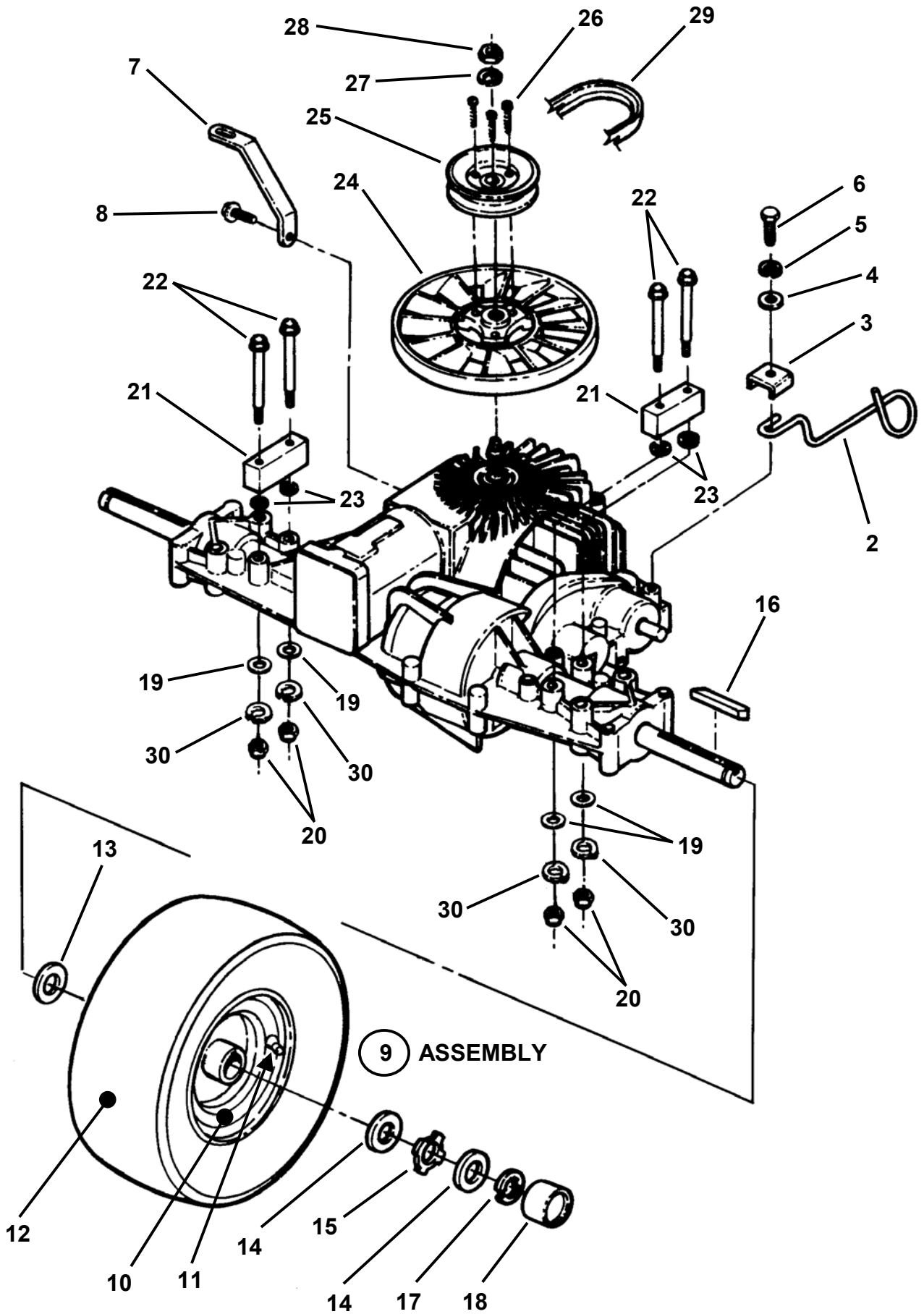
BRAKE & FORWARD/REVERSE CONTROL ASSEMBLIES



BRAKE & FORWARD/REVERSE CONTROL ASSEMBLIES

ITEM	PART NO.	DESCRIPTION
1	4-7222	SHAFT, Forward/Reverse/Brake Pedals
2	7-1953	RING, External Retaining (5/8" Shaft) (6)
3	9-1628	WASHER, .64 I.D. x .99 O.D. x .05 Thick, Flat (11)
4	1-0694	BUSHING, Nylon (6)
5	9-1514	WASHER, .406 I.D. x .812 O.D. x .075 Thick Flat (5)
6	1-0739	RING, 5/8" External Retaining
7	4-7120	PEDAL
8	1-2661	PAD, Pedal
9	4-7220	WELDMENT, Forward/Reverse
10	4-7221	WELDMENT, Brake
11	4-7005	ROD, Accelerator
12	4-7142	ROD, Brake
13	2-4607	SWIVEL, Brake Link- PM (2)
14	2-4586	SWIVEL, Brake Link- PM
15	7-4511	SPRING, Brake Compression
16	2-4874	PIN, 1/2" Self-Lock Cotter (2)
17	9-1593	PIN, 3/8" Self-Lock Cotter (4)
18	9-0555	PIN, 3/32 x 1/2" Cotter

HYDRO DRIVE & REAR WHEEL ASSEMBLIES

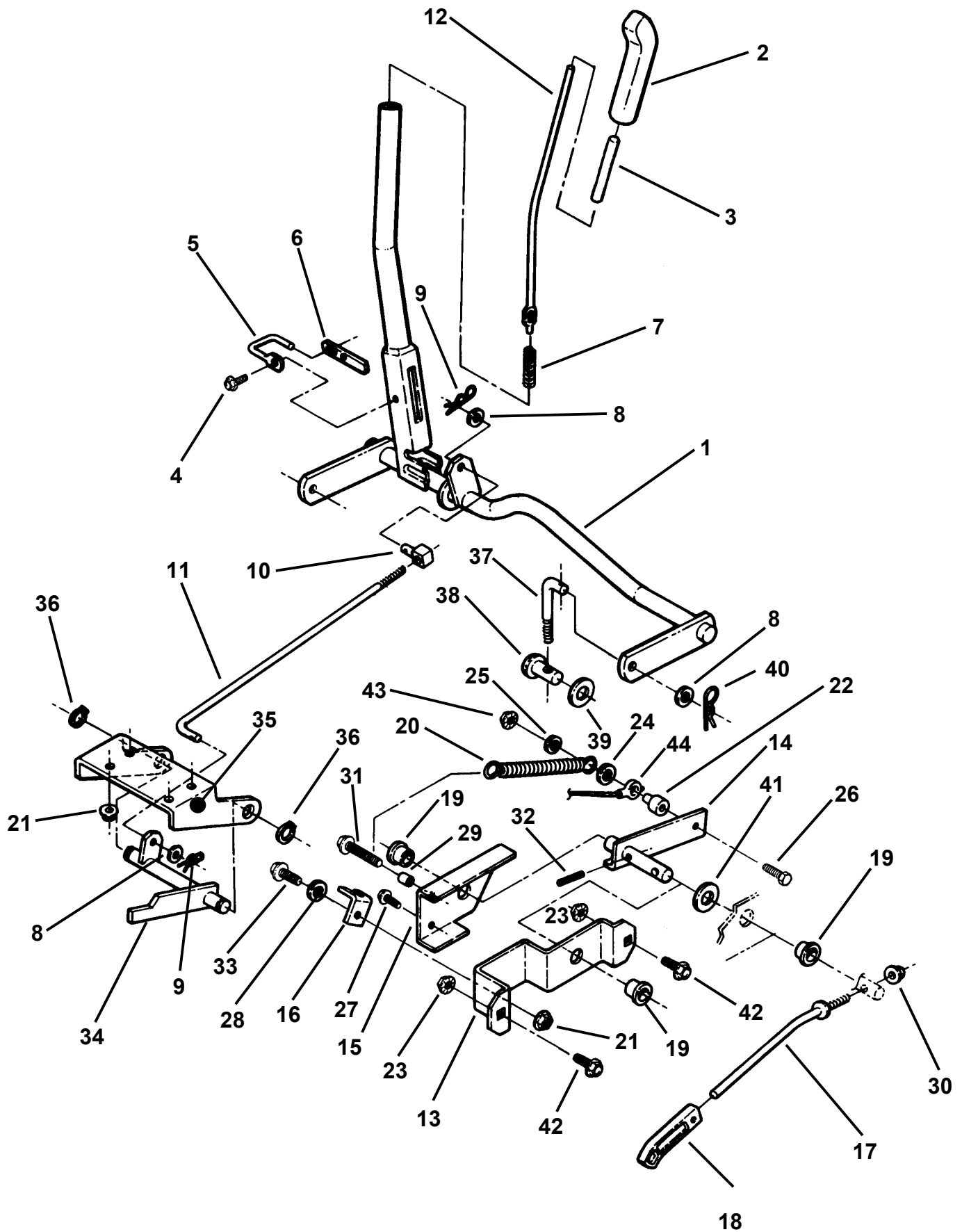


HYDRO DRIVE & REAR WHEEL ASSEMBLIES

ITEM	PART NO.	DESCRIPTION
1	4-1854	TRANSMISSION, Hydro (Peerless P/N 205-043D)
2	7-2125	RELEASE LEVER, Hydro
3	7-2126	RETAINER, Release Lever
4	1-4241	WASHER, 1/4" I.D. x 1" O.D. x 1/16" Thick, Flat
5	9-0052	WASHER, 1/4" Split Lock
6	9-0099	BOLT, 1/4-28 x 1/2" Hex Head Cap, Grade 5
7	4-1985	STRAP, Torque
8	9-1523	BOLT, 5/16-18 x 5/8" Hex Washer Self-Tap (Swage)
9	5-7875	ASSEMBLY, Rear Wheel (Incl. Items 10, 11 & 12) (2)
10	4-5211	RIM, 16 x 7.50
11	1-2234	VALVE STEM
12	2-2584	TIRE, 16 x 7.50-8 Rear Turf
13	3-4453	WASHER, 3/4" I.D. x 1-1/2" O.D. x 1/8" Thick, Flat (4)
14	2-9617	WASHER, 3/4" I.D. x 1-5/16" O.D. 1/16" Thick, Flat (4)
15	2-9618	WASHER, Hub Cap Retaining (2)
16	1-7173	KEY, 3/16" Square x 2-1/2" Long (2)
17	2-9738	RING, 3/4" Retaining (2)
18	1-1022	HUB CAP (2)
19	9-1296	WASHER, .344 I.D. x 11/16 O.D. x 1/16" Thick Flat (4)
20	9-1511	NUT, 5/16-18 Hex, Grade 5 or B (4)
21	4-1853	BLOCK, Hydro Spacer (2) (Also shown on Page 6)
22	9-1058	SCREW, 5/16-18 x 3-3/4" Hex Head Cap (Also shown on Page 6)
23	1-1791	RETAINER, 5/16" Bolt (4) (Also shown on Page 6)
24	----	ASSEMBLY, Hydro Cooling Fan (Peerless P/N 6025-P91)
25	----	PULLEY, Hydro Drive
26	----	SCREW (3)
27	----	WASHER, Lock
28	----	NUT
29	4-7117	BELT, Engine to Hydro (Also shown on Page 16)
30	9-1315	WASHER, 5/16 Split Lock

NOTE: Obtain parts 24 thru 28 from Peerless Gear

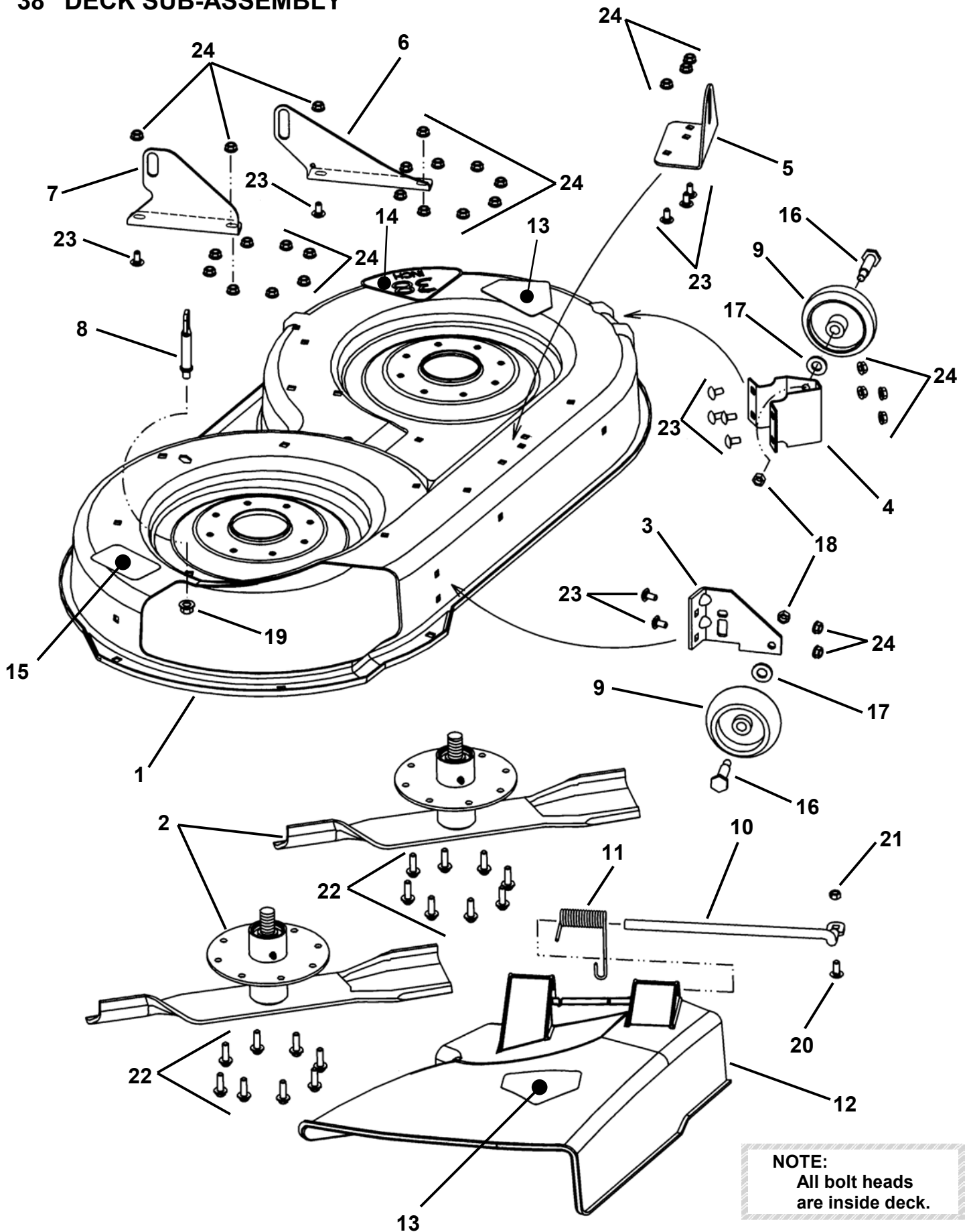
DECK LIFT & BLADE ENGAGEMENT ASSEMBLIES



DECK LIFT & BLADE ENGAGEMENT ASSEMBLIES

ITEM	PART NO.	DESCRIPTION
1	4-6763	WELDMENT, Lift Handle Cross-Rod
2	1-9363	KNOB, Lift Handle
3	2-2295	BUTTON, Lift Handle Release
4	9-0362	SCREW, 1/4-20 x 5/8 Hex Washer Self-Tap
5	2-4742	PIVOT, Latch Detent
6	2-2568	DETENT, Lift Lever
7	2-2566	SPRING
8	9-1514	WASHER, .406 I.D. x .812 O.D. x .075 Thick Flat (2)
9	2-4874	PIN, 1/16 x 1-27/64" Self-Lock Cotter (2)
10	2-4607	SWIVEL, Brake Link
11	4-6959	ROD, Timing
12	4-6799	ROD, Lift Lever
13	7-1922	BRACKET, Blade Engagement
14	7-2201	WELDMENT, Engagement Arm
15	5-8260	SUPPORT, Shaft
16	5-8268	FORK, Cable Anchor
17	4-7125	LEVER, Blade Engagement
18	2-3657	GRIP, Blade Engagement Lever
19	1-0694	BUSHING, Nylon (2)
20	3-6521	SPRING
21	9-1601	NUT, 5/16-18 Hex Flange Lock, Grade 5 (5)
22	5-8246	SPACER, Cable Anchor
23	9-1584	NUT, 1/4-20 Hex Flange Lock, Grade 5 (3)
24	9-1528	WASHER, 3/8 Flat
25	9-1294	WASHER, 1/4" I.D. x 5/8" O.D. x 1/16" Thick Flat
26	9-0909	SCREW, 1/4-20 x 1-1/2" Hex Head Cap
27	9-0302	SCREW, 1/4-20 x 3/8" Hex Washer Self-Tap
28	1-3849	SPACER
29	2-7911	SPACER
30	9-1299	NUT, 3/8-16 Hex Nyloc
31	9-0911	SCREW, 1/4-20 x 1-1/4" Hex Washer Self-Tap
32	1-3072	PIN, 1/4 x 1" Roll
33	9-0606	BOLT, 5/16-18 x 5/8" Hex Flange Lock
34	4-6958	WELDMENT, Front Lift Arm
35	4-6930	BRACKET, Front Lift Arm
36	1-0746	RING, 3/4" External Retaining (2)
37	5-8293	LINK, Leveling
38	5-8292	SWIVEL, Deck Support
39	9-0250	WASHER, 1/2" Flat
40	9-1503	PIN, 3/32 x 1-1/2" Hair
41	2-7344	WASHER, 5/8" Flat
42	9-1530	BOLT, 1/4-20 x 3/4" Short Neck Carriage, Grade 5 (2) (also shown on page 12)
43	9-1099	NUT, 1/4-20 Hex Center Lock (2)
44	5-8196	CABLE, Blade Engagement

38" DECK SUB-ASSEMBLY

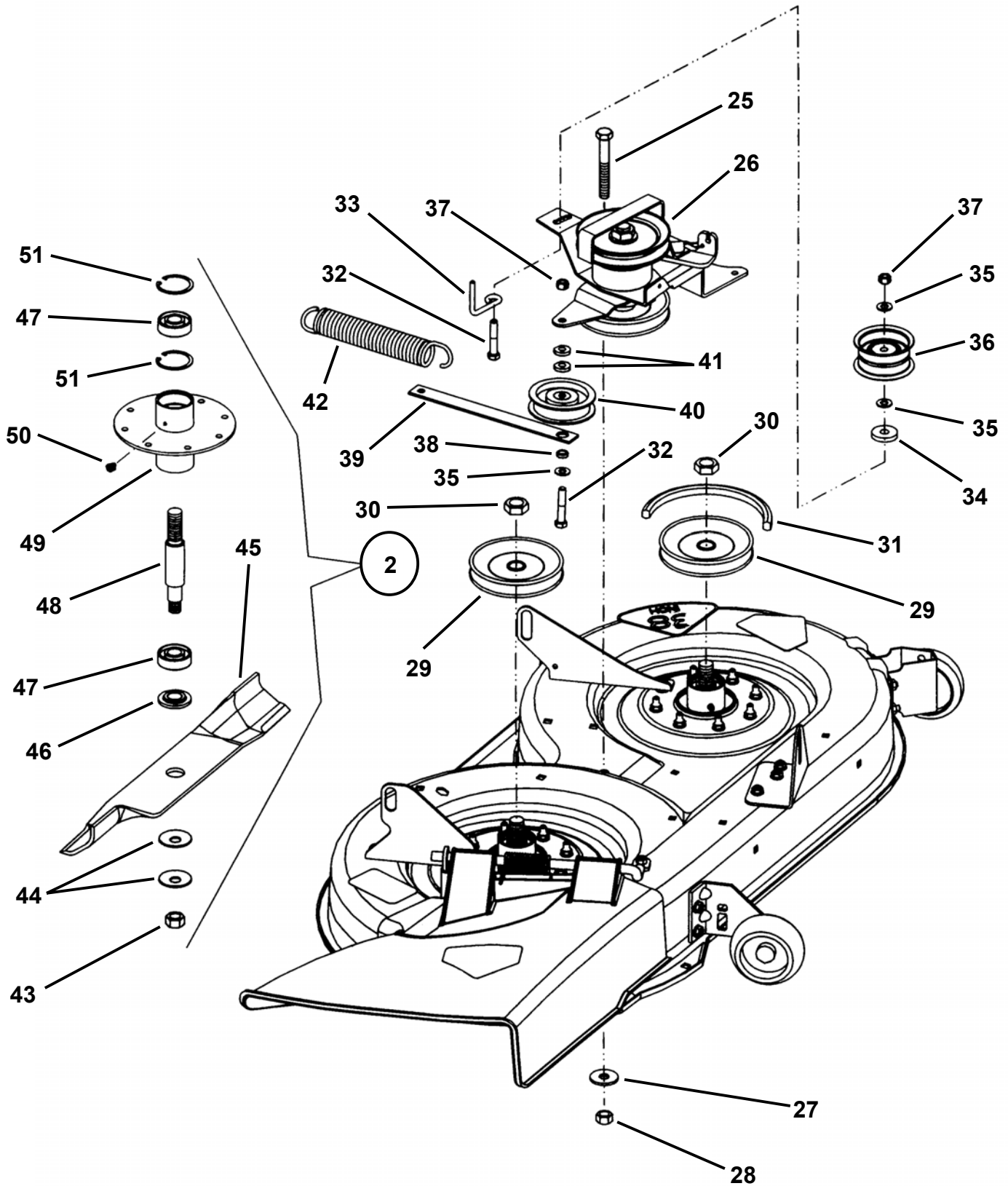


NOTE:
All bolt heads
are inside deck.

38" DECK SUB-ASSEMBLY

ITEM	PART NO.	DESCRIPTION
1	5-8604	ASSEMBLY, Deck (Painted) (Includes 3-5645, 38" Deck)
2	5-8001	ASSEMBLY, Blade Spindle (Series 0) (2) (see next two pages for components)
--	5-8597	ASSEMBLY, Blade Spindle (Series 1) (2) (see next two pages for components)
3	3-5494	BRACKET, Gage Wheel (RF 38 MY97)
4	3-3756	BRACKET, Gage Wheel
5	4-7160	BRACKET, Front Deck
6	4-7161	BRACKET, Left Rear
7	4-7157	BRACKET, Right Rear
8	3-5503	ROD, Side Discharge Mounting
9	2-6122	WHEEL, 4 x 1-1/2" Offset (2)
10	3-5502	ROD, 38" side Discharge Pivot
11	3-5813	SPRING, 38" side Discharge Torsion
12	2-9425	DISCHARGE CHUTE, 38" Deck
13	2-6831	DECAL, CPSC- Heavy Adhesive (2)
14	2-6154	DECAL, 38 Inch
15	4-6720	DECAL, Chute Deflector
16	9-1526	BOLT, 3/8-24 x 5/8" Shoulder (2)
17	9-1587	WASHER, 1/2" I.D. x 1-1/16" O.D. Flat (2)
18	9-1600	NUT, 3/8-24 Hex Center Lock (2)
19	9-0613	NUT, 3/8-16 Hex Flange Lock
20	9-1508	BOLT, 5/16-18 x 3/4" Short Neck Carriage, Grade 5
21	9-1575	NUT, 5/16-18 Hex Center Lock, Grade 5 or B
22	9-1681	BOLT, 5/16-18 x 1" Hex Flange Lock (5)
--	9-0606	BOLT, 5/16-18 x 5/8" Hex Flange Lock (11)
--	9-0721	BOLT, 5/16-18 x 1/2" Hex Flange Lock, Grade 5 (6)
23	9-0799	BOLT, 5/16-18 x 5/8" Short Neck Carriage, Grade 5 (11)
24	9-1601	NUT, 5/16-18 Hex Flange Lock, Grade 5 (35)

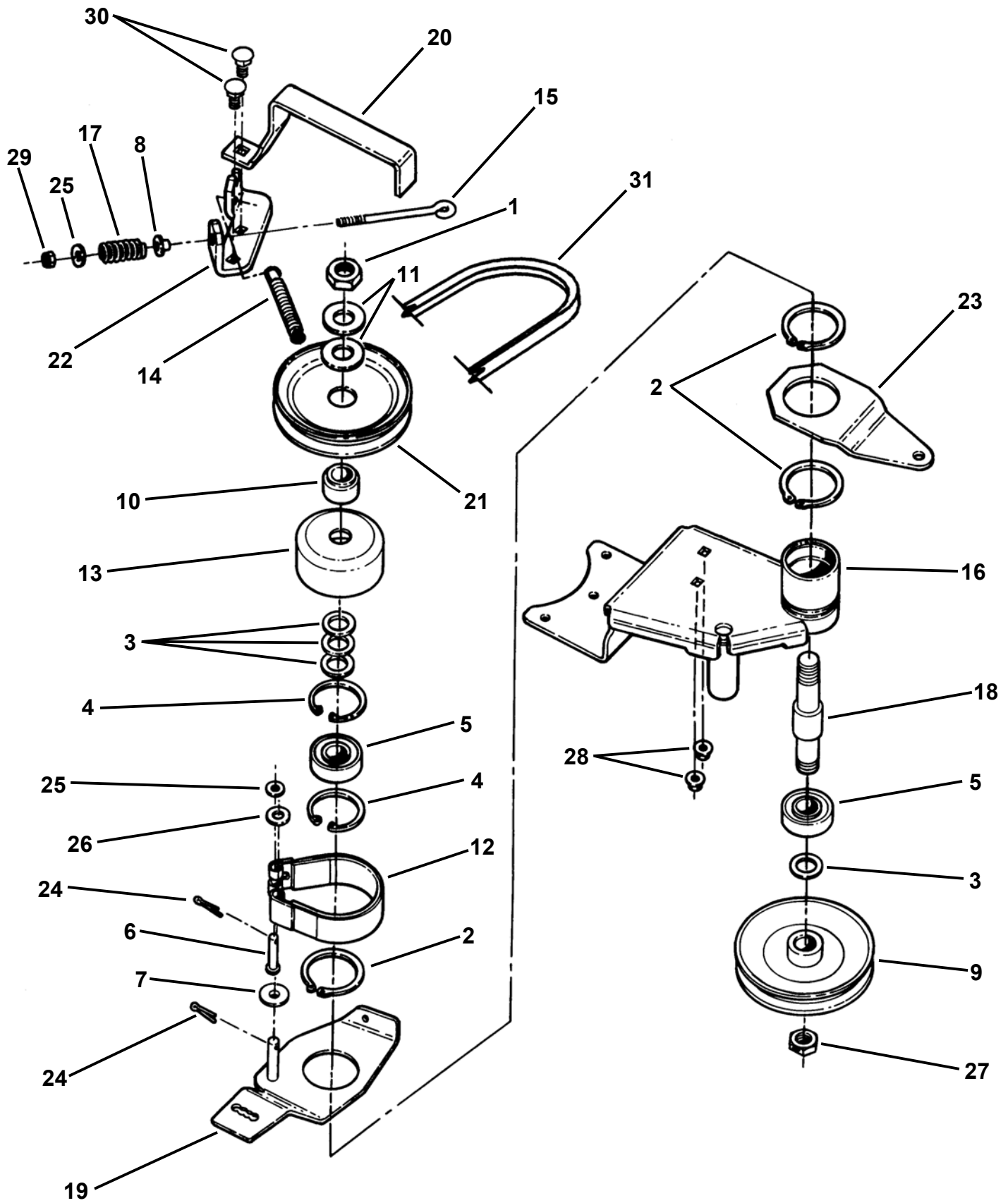
38" CUTTING DECK, BELTS, BRAKES



38" CUTTING DECK, BELTS, BRAKES

ITEM	PART NO.	DESCRIPTION
25	2-9355	BOLT, 1/2-13 x 3-3/4" Hex Head Cap, Grade 5
26	5-8121	ASSEMBLY, Center Spindle (See Page 28 & 29)
27	9-1194	WASHER, .531 I.D. x 1-1/2" O.D. Flat
28	9-0975	NUT, 1/2-13 Hex Center Lock, Grade A
29	1-4532	PULLEY, 5" O.D. (2)
30	7-4467	NUT, 3/4-16 Hex Spindle Jam, Grade 8 (2)
31	5-8231	V-BELT, Blade Drive (Spindle to Spindle)
32	9-1305	SCREW, 3/8-16 x 2" Hex Head Cap, Grade 5 (3)
33	1-5226	FINGER, Belt
34	9-1807	WASHER, 7/16" I.D. x 1-3/8" O.D. x 1/4" Thick Flat
35	9-1514	WASHER, .406 I.D. x .812 O.D. x .075 Thick Flat (4)
36	3-5867	PULLEY, 2-3/4" O.D. Flat Idler
37	9-1585	NUT, 3/8-16 Hex Center Lock, Grade 5 or B (2)
38	2-8774	SPACER, .39 x .625 x .19
39	5-8265	LINK, Blade Idler
40	2-3954	PULLEY, 3.47 O. D. Flat Idler
41	2-9000	SPACER, Blade Hub (2)
42	2-4914	SPRING, Extension
43	9-1633	NUT, 9/16-18 Hex, Grade B
44	2-4467	WASHER, 9/16" Belleville (2)
45	4-2998	BLADE, 19.64"
46	7-2109	WASHER, Spindle Blade
47	1-3313	BEARING, Spindle (2)
48	4-7163	SHAFT, Spindle (Series 0)
--	7-2848	SHAFT, Spindle (Series 1)
49	4-7172	WELDMENT, 38" Deck Spindle Housing (Series 0)
--	7-2847	WELDMENT, 38" Deck Spindle Housing (Series 1)
50	1-3324	FITTING, 3/16" Lube
51	1-2491	RING, 1-3/4" External Retaining (2)

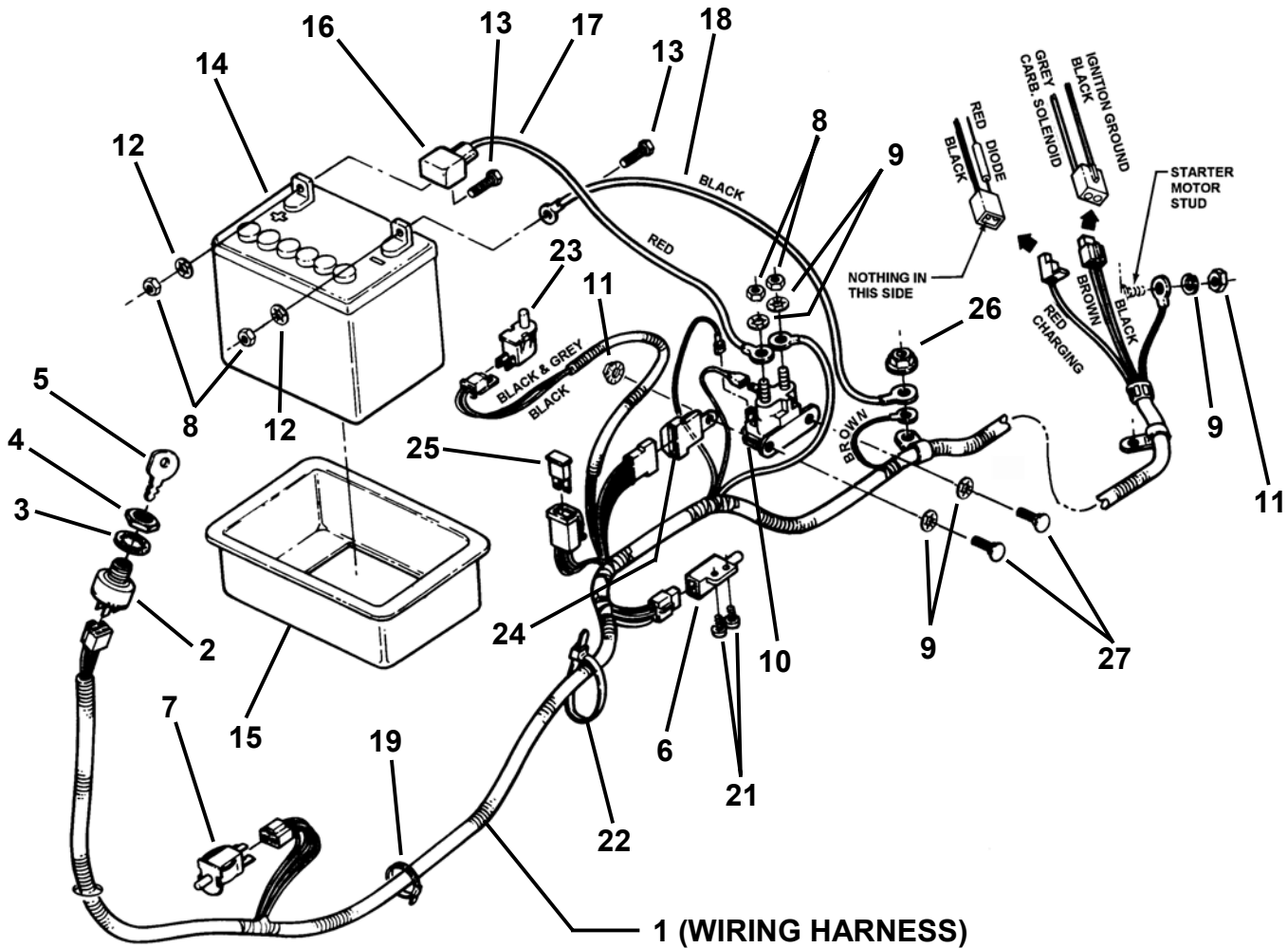
CENTER SPINDLE ASSEMBLY



CENTER SPINDLE ASSEMBLY

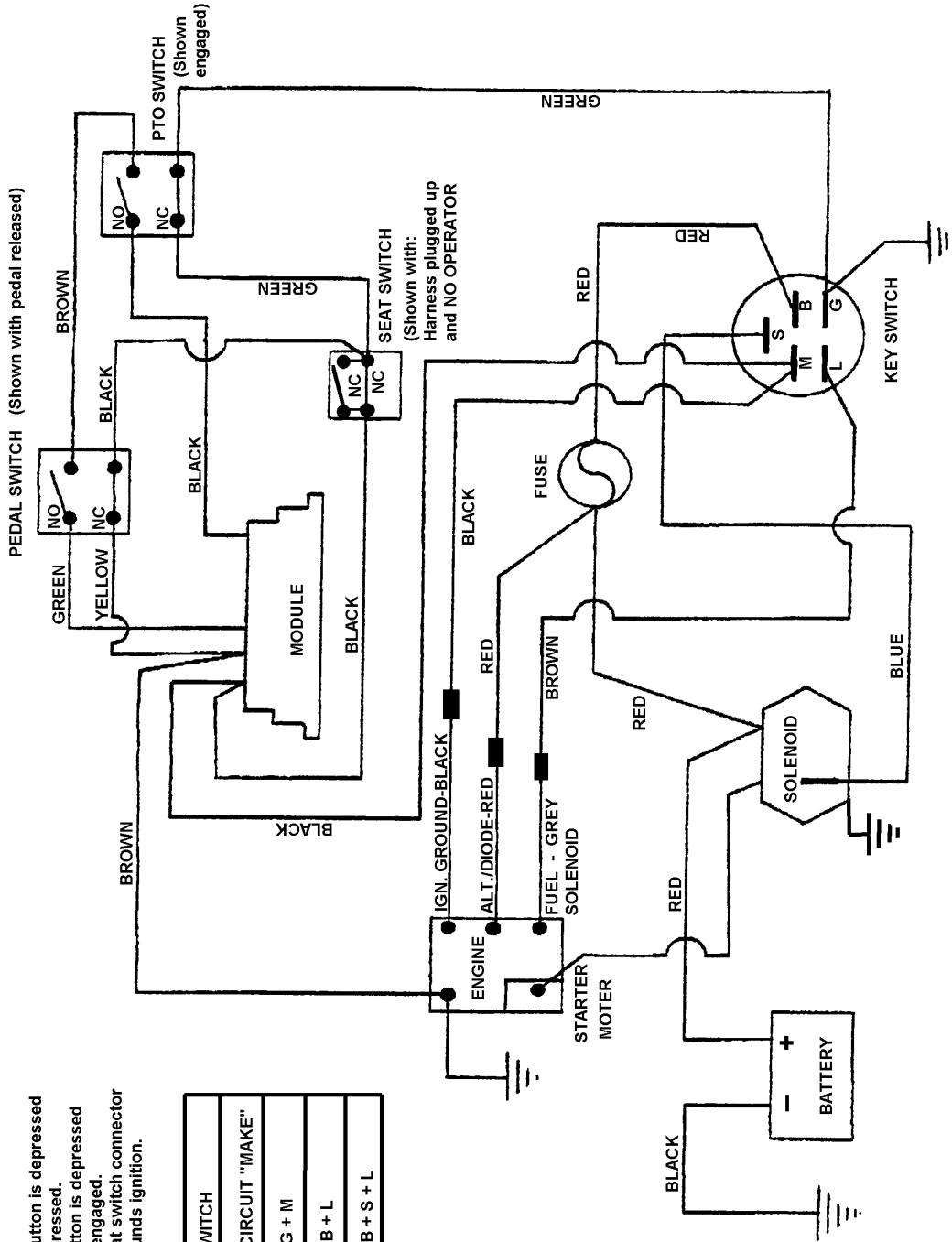
ITEM	PART NO.	DESCRIPTION
1	7-4467	NUT, 3/4-16 Hex Flange Jam, Grade 8
2	1-0740	RING, 2" External Retaining (3)
3	1-0935	WASHER, 3/4" I.D. x 1-1/8" O.D. x 1/16" Thick Flat (4)
4	1-2491	RING, 1.75 External Retaining (2)
5	1-3313	BEARING, Spindle
6	1-4304	WELD PIN, .37 x 2"
7	1-4314	SPACER, .31 I.D. x .39 O.D. x 1" Nylon
8	1-4343	BUSHING, .27 I.D. x .35 O.D. x .4 Flanged
9	1-4532	PULLEY, 5.0 O.D.
10	1-5290	PULLEY HUB, PM
11	3-2027	WASHER, 3/4" I.D. x 1-1/2" O.D. x 1/16" Flat (2)
12	6-3211	BAND, Brake
13	3-5378	DRUM, 17mm Brake
14	3-6521	SPRING
15	2-6677	EYE-BOLT, 1/4-20 Thread
16	4-6761	WELDMENT, Spindle Bracket/Housing
17	4-6782	SPRING, Rectangle Wire Die
18	4-7229	SPINDLE, Center
19	5-8235	WELDMENT, Idler Arm
20	5-8367	BELT GUIDE, Front
21	7-2145	PULLEY, Jack Shaft
22	7-2146	BRACKET, Brake Cable
23	7-2147	IDLER ARM
24	9-0037	PIN, 3/32 x 3/4" Cotter (2)
25	9-0055	WASHER, 1/4" Flat (2)
26	9-0122	WASHER, 3/8" SAE Flat
27	9-0356	NUT, 5/8-18 Hex Center Lock Jam
28	9-0585	NUT, 5/16-18 Hex Flange Lock (2)
29	9-0761	NUT, 1/4-20 Hex Top Lock
30	9-1303	BOLT, 5/16-18 x 1" Short Neck Carriage, Grade 5 (2)
31	7-1991	BELT, Engine to Deck

ELECTRICAL COMPONENTS



ITEM	PART NO.	DESCRIPTION
1	5-9470	WIRING HARNESS
2	2-6343	SWITCH, Ignition
3	9-0880	WASHER, 5/8" Int. Tooth Lock
4	1-2685	NUT, 5/8-32 Hex (Special)
5	1-1138	KEY, Switch (2)
6	2-3355	SWITCH, DPDT NC/NO
7	2-2886	SWITCH, Seat DP NO/NC Snap-In
8	9-1576	NUT, 1/4-20 Hex, Grade 5 or B
9	9-0053	WASHER, 1/4" Internal Tooth Lock (5)
10	1-8817	SOLENOID
11	9-1584	NUT, 1/4-20 Hex Flange Lock, Grade 5 (2)
12	1-2485	RETAINER, 1/4" Bolt (2)
13	2-7172	SCREW, 1/4-20 x 5/8" Hex Head Cap, Grade 5 (2)

ITEM	PART NO.	DESCRIPTION
14	6-0753	BATTERY, No-Spill, 7 Plate, 210 CCA, Dry Charge Type
15	1-7853	TRAY, Battery
16	1-2444	COVER, Battery Cable
17	1-9326	CABLE, Positive (+), Red, 17"
18	2-8027	CABLE, Negative (-), Black, 14"
19	1-2080	CABLE TIE, 7" Long
20	9-1099	NUT, 1/4-20 Hex Center Lock, Grade B or 5
21	9-0913	SCREW, #10-24 x 1/2" Hex Washer Self-Tap (Torx) (2)
22	2-4649	WIRE TIE, Black Nylon, 11"
23	1-7590	SWITCH, Seat, NC (Grey)
--	2-3354	SWITCH, Seat
24	2-8606	INTERLOCK, Module
25	2-3653	FUSE, 20A
26	9-1297	NUT, 5/16-24 Hex, Gr. 5 (2)
27	9-1530	BOLT, 1/4-20 x 3/4" Short Neck Carriage, Gr. 5 (2)



- NOTES:
1. Pedal switch button is depressed when pedal is depressed.
 2. PTO switch button is depressed when blade is disengaged.
 3. Unplugging seat switch connector automatically grounds ignition.

KEY SWITCH	
POSITION	CIRCUIT "MAKE"
1. OFF	G + M
2. RUN	B + L
3. START	B + S + L

**381450HBVE WIRING SCHEMATIC
(HYDRO RER)**

Parts Manual for

SNAPPER®

REAR ENGINE RIDING MOWER

HYDRO DRIVE

SERIES 0 & 1

IT IS THE POLICY OF SNAPPER TO IMPROVE ITS PRODUCTS WHENEVER IT IS POSSIBLE AND PRACTICAL TO DO SO. WE RESERVE THE RIGHT TO MAKE CHANGES OR ADD IMPROVEMENTS AT ANY TIME WITHOUT INCURRING ANY OBLIGATION TO MAKE SUCH CHANGES ON PRODUCTS MANUFACTURED PREVIOUSLY.

SNAPPER® McDonough, GA., 30253 U.S.A.

COPYRIGHT © 2002
SNAPPER INC.
ALL RIGHTS RESERVED

MANUAL No. 06123

(Rev. 3, 06/30/02)

Printed in U.S.A.