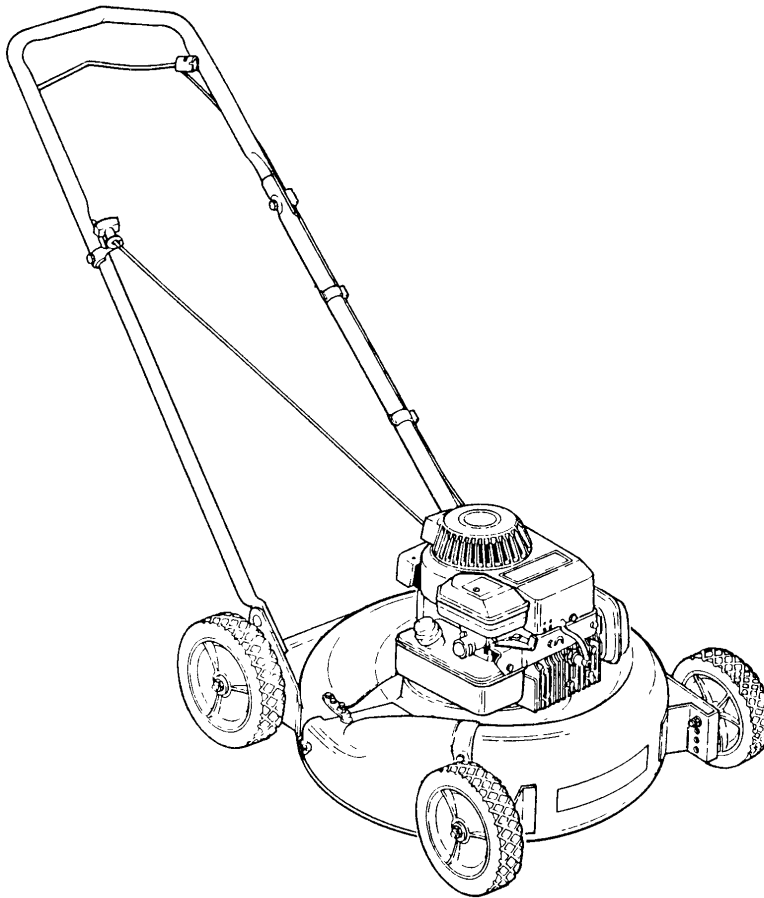


*Parts Manual for*  
**SNAPPER®**

**21" OPENING PRICE POINT  
WALK BEHIND MOWER  
SERIES 0**

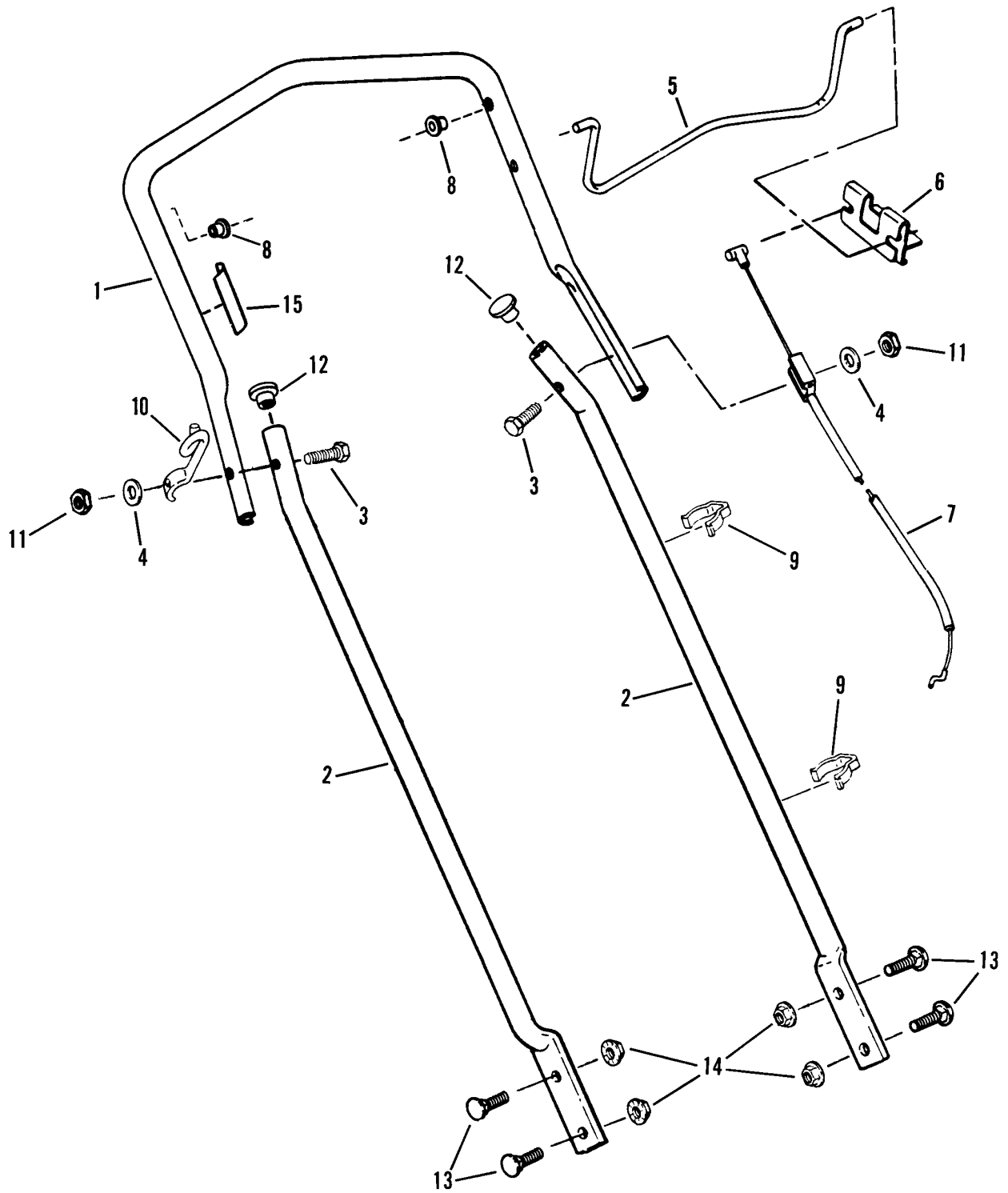
<b>MODEL</b>
<b>RO21380</b>



**SNAPPER®** McDonough, GA, 30253 U.S.A.



<b>PAGE</b>	<b>GROUP</b>
4	Handles & Controls
6	Cutting Deck, Blade, Interlock
8	Wheels, Guards, Axles
10	Side Chute, Adapter
12	Decals



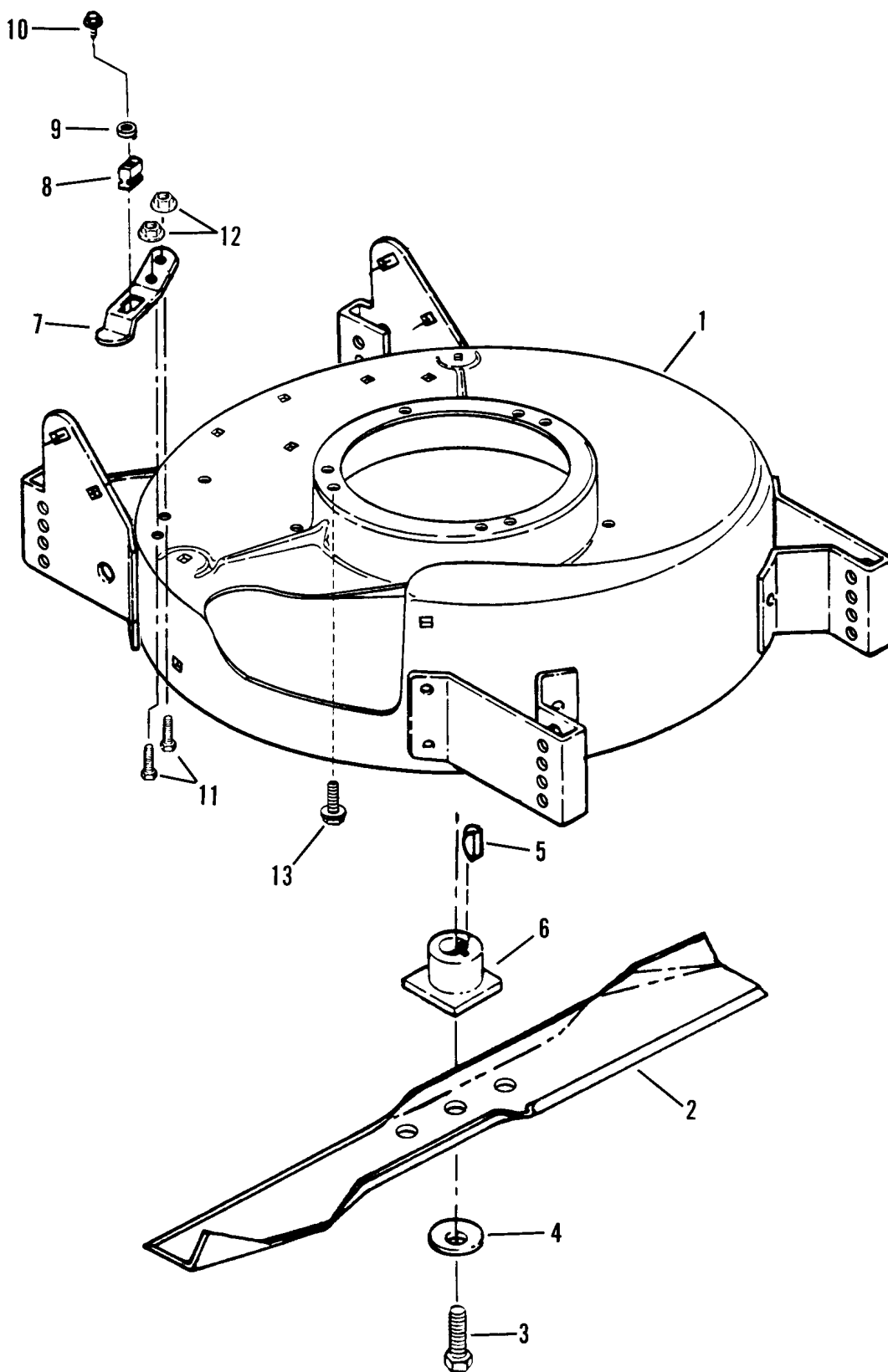
## **Handles & Controls**

---

<b>Item</b>	<b>Part No</b>	<b>Qty</b>	<b>Description</b>	<b>Note</b>
1	7074384		HANDLE, Upper	<i>Was 33473</i>
2	7033406		HANDLE, Middle	
3	7091022	2	SCREW, 1/4-28 x 1-3/4" Hex Head Cap	
4	7090053		WASHER, 1/4 Internal Tooth Lock	<i>Was 91023</i>
5	7017072		CONTROL, Blade	
6	7033904		CLIP, Blade Control	
7	7016707		CABLE, Blade Control	
8	7014343		BUSHING	
9	7023813		CLIP, Wiring Harness	
10	7026141		GUIDE, Pull Rope	
11	7090095		NUT, 1/4-28 Hex	<i>Was 91024</i>
12	7016544	2	PLUG	
13	7091508	4	BOLT, 5/16-18 x 3/4" Short Neck Carriage	<i>Was 90001</i>
14	7091601	4	NUT, 5/16-18 Hex Flange Lock	<i>Was 91070</i>
15	7024211		DECAL, Blade Control	

### **Footnotes:**

Cutting Deck, Blade, Interlock

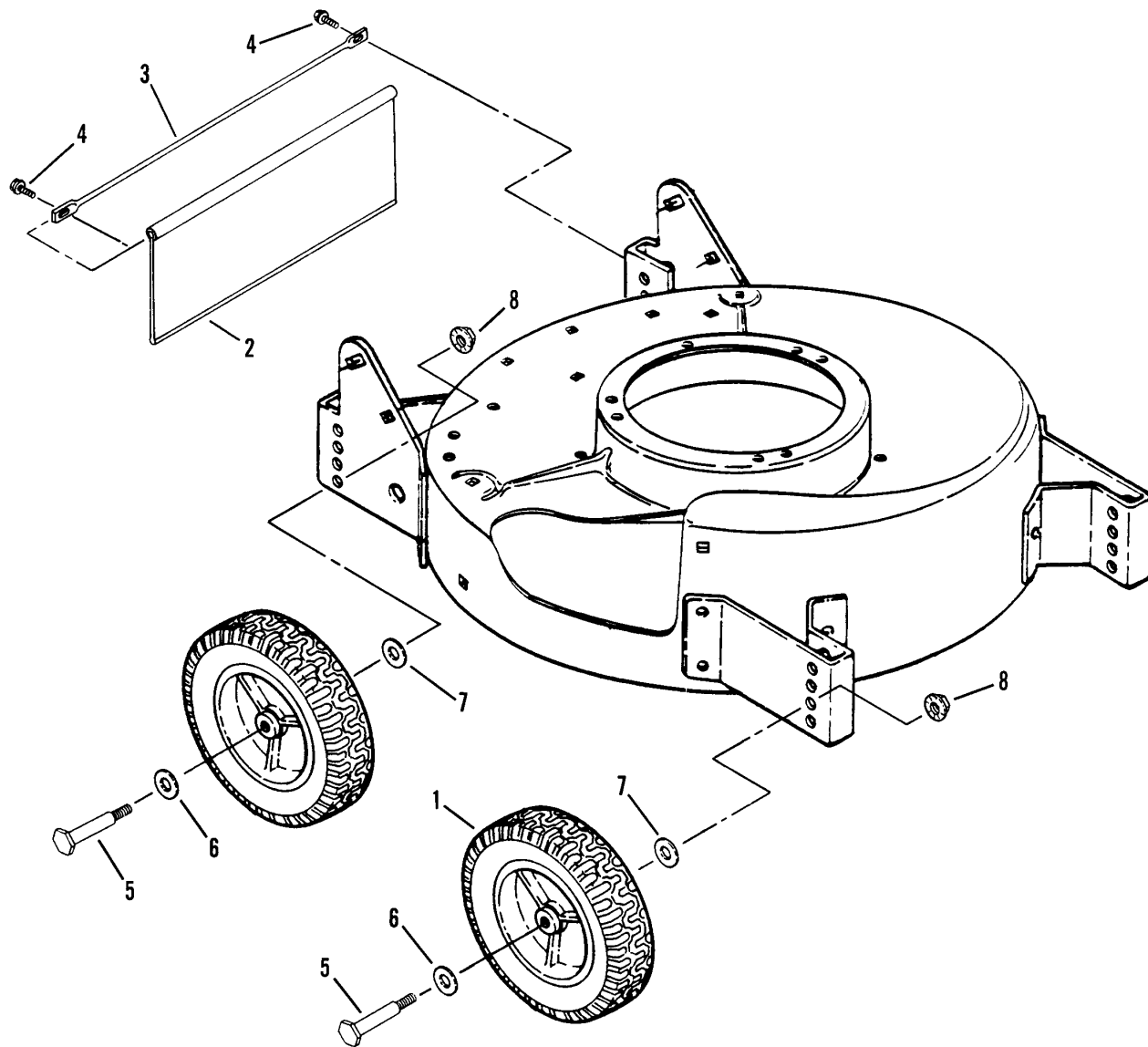


## **Cutting Deck, Blade, Interlock**

---

<b>Item</b>	<b>Part No</b>	<b>Qty</b>	<b>Description</b>	<b>Note</b>
1	7053271		DECK, Mower	<i>(Includes painted deck with decals)</i>
2	7017168		BLADE, Cutter	
3	7090167		SCREW, 3/8-24 x 2" Hex Head Cap (Gr. 5)	
4	7012063		WASHER, Cone	
5	7010783		KEY, Hi-Pro	
6	7012927		HUB, Blade Drive	
7	7033408		SPRING, Interlock	
8	7012048		INSULATOR, Interlock	
9	7090385		WASHER, #8 Tab	
10	7090379		SCREW, #8-18 x 3/4" Self-Tapping	
11	7090071	2	SCREW, 1/4-20 x 3/4" Hex Head Cap	
12	7091584	2	NUT, 1/4-20 Hex Flange	<i>Was 90583</i>
13	7090324	3	SCREW, 3/8-16 x 1" Self-Tapping	

### **Footnotes:**





## ***Wheels, Guards, Axles***

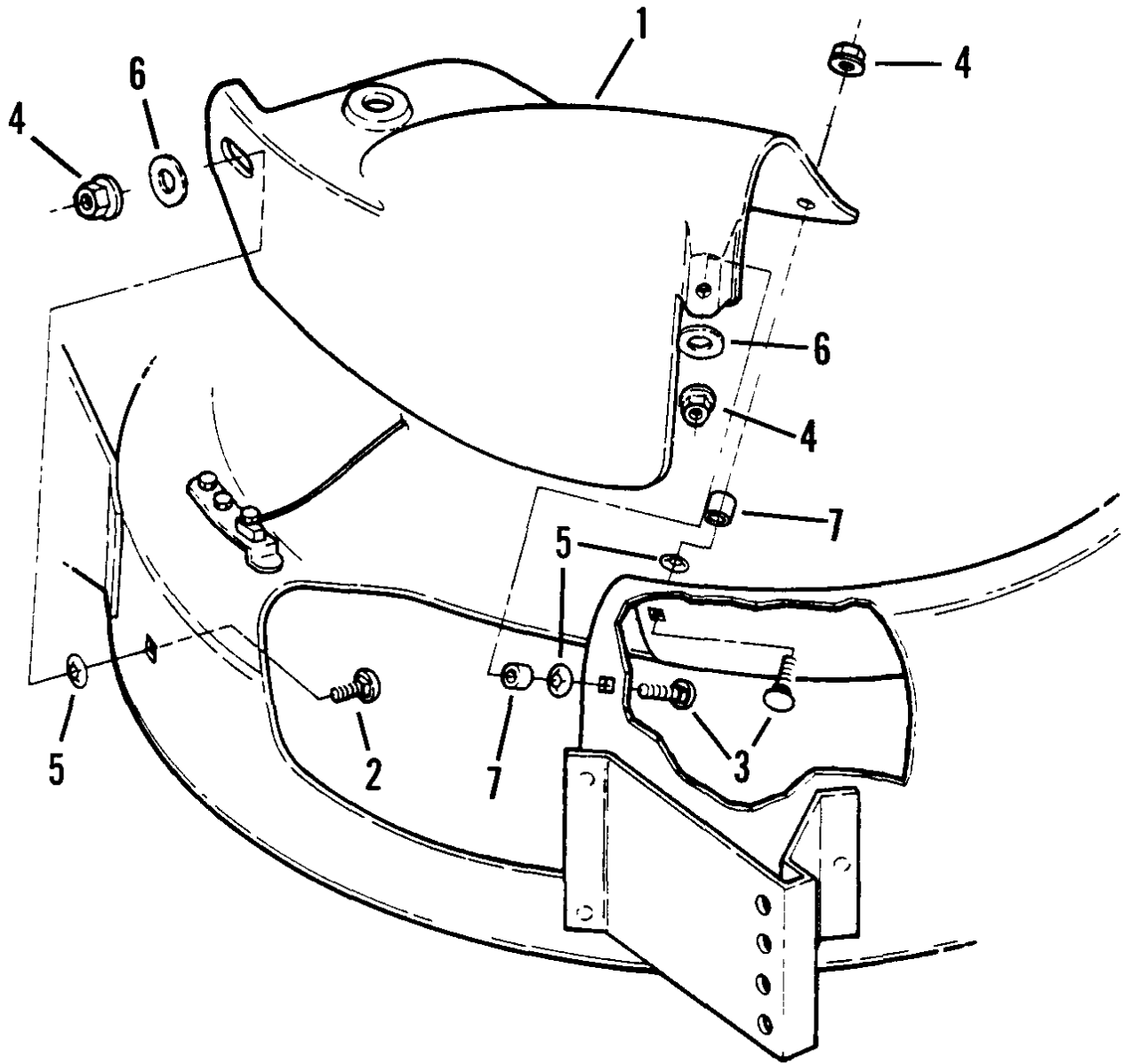
---

<b>Item</b>	<b>Part No</b>	<b>Qty</b>	<b>Description</b>	<b>Note</b>
1	7022374	2	WHEEL, Front & Rear 8 x 2.00	
2	7026667		GUARD, Rear Foot	
3	7026643		SUPPORT, Foot Guard	
4	7090913	2	SCREW, #10-24 x 1/2" Hex Washer Self-Tap (Torx)	
5	7091221	4	BOLT, 3/8-16 x 2-7/16" Shoulder	
6	7011121	4	WASHER, 5/8 Belleville	
7	7091220	4	WASHER, 9/16 x 1-1/16" O.D. Thrust	
8	7091619	4	NUT, 3/8-16 Hex Flange Lock	<i>Was 90613</i>

### **Footnotes:**

**Side Chute, Adapter**

---

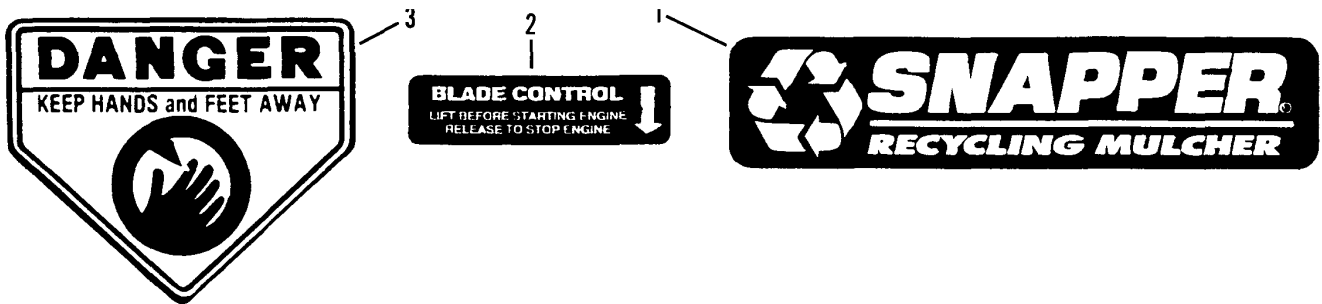


## **Side Chute, Adapter**

---

<b>Item</b>	<b>Part No</b>	<b>Qty</b>	<b>Description</b>	<b>Note</b>
1	7026560		COVER, Recycling	
2	7091508		BOLT, 5/16-18 x 3/4" Short Neck Carriage	<i>Was 90001</i>
3	7091303	2	BOLT, 5/16-18 x 1" Short Neck Carriage	<i>Was 91072</i>
4	7090951	3	NUT, 5/16-18 Center Lock	
5	7011791	3	RETAINER, 5/16 Bolt	
6	7091076	3	WASHER, 5/16 Flat	
7	7024340	2	SPACER	

**Footnotes:**



## ***Decals***

---

<b>Item</b>	<b>Part No</b>	<b>Qty</b>	<b>Description</b>	<b>Note</b>
1	7026388		LOGO, SNAPPER (Recycling / Mulching)	
2	7024211		DECAL, Blade Control	
3	7013010		DECAL, Danger	

**Footnotes:**





*Parts Manual for*

# **SNAPPER**<sup>®</sup>

## **21" OPENING PRICE POINT WALK BEHIND MOWER SERIES 0**

IT IS THE POLICY OF SNAPPER TO IMPROVE ITS PRODUCTS  
WHENEVER IT IS POSSIBLE AND PRACTICAL TO DO SO. WE  
RESERVE THE RIGHT TO MAKE CHANGES OR ADD IMPROVEMENTS  
AT ANY TIME WITHOUT INCURRING ANY OBLIGATION TO MAKE  
SUCH CHANGES ON PRODUCTS MANUFACTURED PREVIOUSLY.

**SNAPPER** McDonough, GA, 30253 U.S.A.