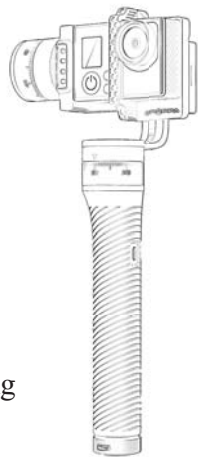


User Guide

V 1.0
2015.12



Stabilize your shooting professionally

Handheld 3-Axis Camera Gimbal Stabilizer

specially designed for GoPro Hero 3/ 3+ / 4 compatible with other cameras of similar size & shape

Product diagram



Working mode

Horizontal Follow

Default working mode when turn on.

Tilt and roll are locked and indicator light is Green.

Pan angle changes smoothly following the handle direction, and tilt angle can be adjusted by moving joystick up and down.

Joystick is pressure speed sensitive.

Head Locking

Pan, tilt and roll are all locked and indicator light is Red.

Joystick can be moved up and down to adjust the tilt angle, and can be moved left and right to adjust the pan angle.

Joystick is pressure speed sensitive.

Full Follow

Roll is locked and indicator light is Orange.

Pan & tilt angles changes smoothly following the handle direction.

Joystick doesn't work in this mode.

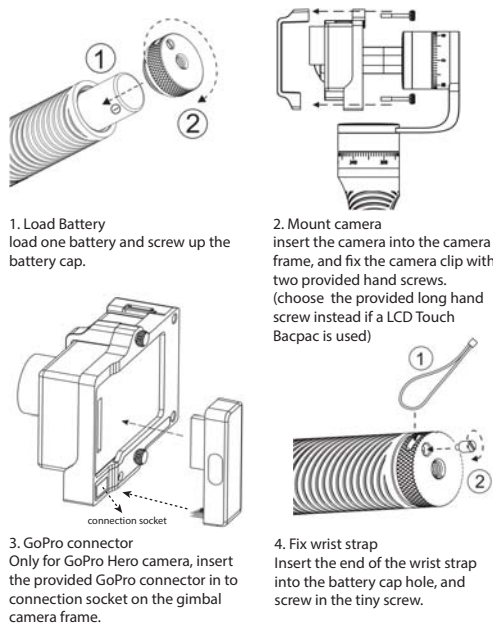
Acknowledge

Thank you for choosing Snappa Go Handheld 3-Axis Camera Gimbal Stabilizer, which is specially designed for GoPro Hero 3 / 3+ / 4, and is compatible with other cameras of similar size and shape.

Snappa Go is portable, handy and simple to use. with this device, you can easily shoot image smoothly with one hand, recording every exciting moment during moving without unpleasing shake caused by natural arm movements.

This publication gives you the information required to safely operate the equipment. It is important to read this literature before using the gimbal for the first time.

Preparing the product



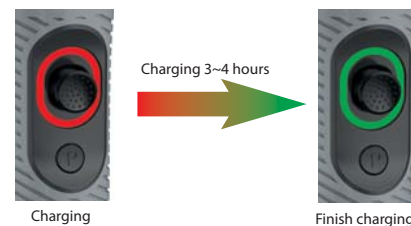
Charging instruction

The provided 2800mAh can power the gimbal for about 4 hours. (Duration may vary due to different working conditions and battery cycle times)

Use the USB cable to charge the gimbal through the Micro USB port beside the joystick, with 5V/1.0A power input.

When the gimbal is powered off, the battery inside the handle will be charged.

When the gimbal is powered on, the charger will only supply working power, but will not charge the battery.



WARNING

1. Don't heat or refit battery.
2. Don't drop or strike battery.
3. Don't put the battery and other metallic things together in case short-circuited.
4. Take out the battery if you don't need to use for a long time.

Package content

Check that all the following items are in the package. If some items are missing, please contact Snappa Tech or local dealer.

	Handheld 3-axis gimbal stabilizer	x 1
	GoPro Connector	x 1
	USB cable	x 1
	18650 Li-Po battery (2800mAh)	x 1
	Long hand screw	x 2
	Snappa Go User Guide	x 1

Operation guide

Power Switch

Turn on: short press P + Press P & hold for at least 1.5 seconds
Turn off: press P & hold for at least 1.5 seconds

while starting up, be sure to hold the gimbal steady

Sleep/wakeup: short press P button

If using GoPro Hero 3/3+/4 camera with the provided GoPro connector:

camera will be powered on automatically and start to record when turn on the gimbal.

when press P button and make the gimbal sleep, camera will stop recording; when press P again to wake up gimbal, camera will start to record again.



Working mode Switch

Single press joystick button to switch between three working modes:

1. Horizontal Follow
2. Head Locking
3. Fully Follow

LED Light

When shooting in a dark condition, the built-in Led light can enhance the lightness nearby and help to improve the image quality.

Turn on/off light: Press Joystick button and hold at least 1.5 seconds

Indicator light

Gimbal Status	Indicator light	working mode/status
power on		Horizontal follow mode
		Head Locking mode
		Fully follow mode
		Low battery warning
power off or sleep		Battery above 85%
		Battery between 50%-85%
		Battery below 50%
charging		Battery charging
		Battery fully charged

FCC Notice

This device complies with Part 15 of the FCC Rules. Operation is subject to the following two conditions:

(1) This device may not cause harmful interference, and (2) this device must accept any interference received, including interference that may cause undesired operation.

NOTE 1: This equipment has been tested and found to comply with the limits for a Class B digital device, pursuant to part 15 of the FCC Rules. These limits are designed to provide reasonable protection against harmful interference in a residential installation. This equipment generates, uses and can radiate radio frequency energy and, if not installed and used in accordance with the instructions, may cause harmful interference to radio communications. However, there is no guarantee that interference will not occur in a particular installation. If this equipment does cause harmful interference to radio or television reception, which can be determined by turning the equipment off and on, the user is encouraged to try to correct the interference by one or more of the following measures:

- Reorient or relocate the receiving antenna.
- Increase the separation between the equipment and receiver.
- Connect the equipment into an outlet on a circuit different from that to which the receiver is connected.
- Consult the dealer or an experienced radio/TV technician for help.

NOTE 2: Any changes or modifications to this unit not expressly approved by the party responsible for compliance could void the user's authority to operate the equipment.