

Socket Bluetooth 56K Modem

User's Guide

BM56S



M73-APO02-550

Declaration of conformity

This equipment conforms to the Directive 1995/5/EC (R&TTE Directive) and is qualified for bearing the CE Marking.

Standard:

EN301 489-17 ,
EN301-489-1,
EN300382-1,
EN300382-2,
EN60950

Important Safety Instructions

Before using your telephone equipment, basic safety precautions should always be followed to reduce the risk of fire, electric shock and injury to persons, including the following:

1. Read and understand all instructions.
2. Follow all warnings and instructions marked on the product.
3. Unplug this product from the telephone jack and the power outlet before cleaning. Do not use liquid or aerosol cleaners. Use a damp cloth for cleaning.
4. Do not use this product near water, such as near a bathtub, sink, laundry tub, in a wet basement, or near a swimming pool.
5. Do not place this product on an unstable cart, stand, or table. Serious damage may result if the product falls.
6. Slots or openings in the cabinet and the back and bottom are provided for ventilation to protect the phone from overheating. These openings must not be blocked or covered. The product should never be placed near or over a radiator or heat register.
7. This product should be operated only from the type of power source indicated on the marking label.
8. Do not allow anything to rest on the power cord. Do not locate this product where the cord will be abused by persons walking on it. Do not attach the power cord to building surfaces.
9. do not overload wall outlets and extension cords as this can result in the risk of fire or electric shock.
10. never push any objects into this product through cabinet slots as they may touch dangerous voltage points or short out parts that could result in a fire or electric shock. Never spill liquid of any kind on the product.
11. if this product does not operate normally, see the "In Case of Difficulty" section in this owner's manual. If you cannot resolve the problem, or if the product is damaged, refer to the "Unlimited Warranty" section of this owner's manual. Opening the product or reassembling it incorrectly may expose you to dangerous voltages or other risks, and will void the warranty.
12. Unplug this product from the wall outlet and refer servicing to qualified service personnel under the following conditions: (a) When the power supply cord or plug is damaged or frayed. (b) if liquid has been spilled into the product. (c) If the product has been exposed to rain or water. (d) If the product does not operate normally by following the operating instructions. Adjust only those controls that are covered by the operating instructions. (e) If the product has been dropped or the cabinet has been damaged. (f) If the product exhibits a distinct change in performance.
13. Avoid using a telephone during an electrical storm. There may be a remote risk of electric shock and/or hearing damage from lightning.
14. Do not use the telephone near a gas leak even to report the leak.

FCC Warning

Warning: Changes or modifications to this unit not expressly approved by the party responsible for compliance could void the user authority to operate the equipment.

This device complies with Part 15 of the FCC Rules. Operation is subject to the following two conditions: (1) this device may not cause harmful interference, and (2) this device must accept any interference received, including interference that may cause undesired operation.

The users manual or instruction manual for an intentional or unintentional radiator shall caution the user that changes or modifications not expressly approved by the party responsible for compliance could void the user's authority to operate the equipment.

NOTE: This equipment has been tested and found to comply with the limits for a Class B digital device, pursuant to Part 15 of the FCC Rules. These limits are designed to provide reasonable protection against harmful interference in a residential installation. This equipment generates, uses and can radiate radio frequency energy and, if not installed and used in accordance with the instructions, may cause harmful interference to radio communications.

However, there is no guarantee that interference will not occur in a particular installation. If this equipment does cause harmful interference to radio or television reception, which can be determined by turning the equipment off and on, the user is encouraged to try to correct the interference by one or more of the following measures:

- Reorient or relocate the receiving antenna.
- Increase the separation between the equipment and receiver.
- Connect the equipment into an outlet on a circuit different from that to which the receiver is needed.
- Consult the dealer or an experienced radio/TV technician for help.



CAUTION:

1. The equipment complies with FCC RF radiation exposure limits set forth for an uncontrolled environment, under 47 CFR 2.1093 paragraph (d)(2).
2. This Transmitter must not be co-located or operating in conjunction with any other antenna or transmitter

Basic Information

Features

- § Plug & Play
- § DTE rate up to 115,200bps
- § CE, R&TTE approval
- § V.92 Hardware Ready
- § Wireless connection via Bluetooth™ radio transmission between PC host and modem.
- § Complies with Bluetooth SIG specification Rev. 1.0
- § Uses 2.4 GHz ISM frequency band
- § High-speed wireless transmissions, up to 721 Kbps data throughput
- § Connections within ranges up to 32 feet (10 meters)
- § PSTN Telephone Line interface through RJ-11

Requirements

- An analog telephone line with RJ-11 jack
- System with Bluetooth utility and Bluetooth module pre-installed.


LEDs on the Front Panel

LED Indicators	Status
Charger LED	Green (Full), Amber (Charge)
Power LED	Power ON(Green Flash), Battery low(Red Flash)
BT LED	Blue(Flash),radio side being present and operating
Off Hook LED	Green (ON) off hook

INSTALLATION

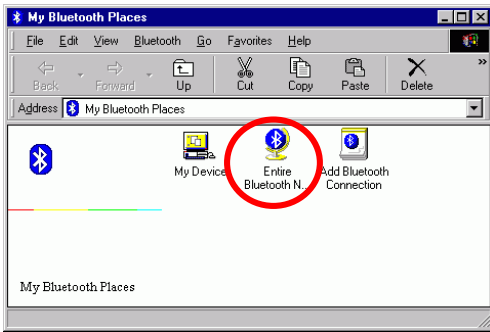
In Windows 98/ME/2000

Before you start

1. Make sure your computer, namely PC, notebook or PDA has Bluetooth utility and hardware device well-installed. (This is can be checked by the existence of a Bluetooth icon  on the bottom right corner of your screen)
2. If you are using Windows 98, have Windows 98 CD on hand as the installation program may require the original CD while installing.

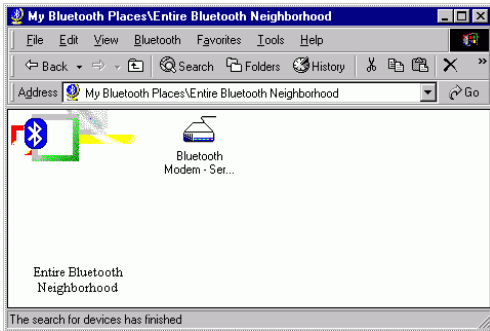
Getting Started


1. Connect a telephone line to the Line port of the Bluetooth 56K Modem.
2. Power on the Bluetooth 56K Modem.
3. Open “**My Bluetooth Places**” which should be present on your desk.
4. Click **Entire Bluetooth Neighborhood** to search the Bluetooth 56K Modem..




5. The Bluetooth 56K Modem shall be found if this computer has used the Bluetooth service.

6. Double-click **Bluetooth Modem**.



7. Note the Bluetooth icon  on the bottom right of your desktop will blink. Double click

 to open the following dialog box. Enter


your Passkey. Your Passkey is written on the bottom label of the Bluetooth 56K Modem. Turn over the Modem to find the Passkey. The Passkey is composed by 12 numbers and is a unique one.



8. Available Bluetooth services will appear.

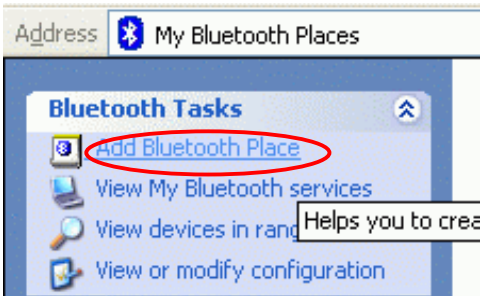
In Windows XP

Before you start

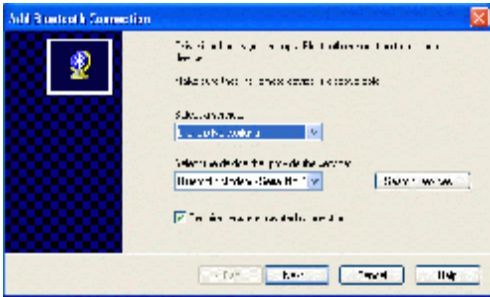
Make sure your computer, namely PC, notebook or PDA has Bluetooth utility and hardware device well-installed. (This can be checked by the existence of a Bluetooth icon  on the bottom right corner.)

Getting started

1. Connect a telephone line to the Line port of the Bluetooth 56K Modem.
2. Power on the Bluetooth 56K Modem.
3. Open “**My Bluetooth Places**” which should be present on your desk.
4. Select **Add Bluetooth Place**. Windows will automatically start searching Bluetooth devices.



5. Once Bluetooth Modem is found, click **Next** to continue.



6. Windows will start searching the available Bluetooth services. When the bottom right message appears, enter your Passkey. Your Passkey is written on the bottom of the Bluetooth 56K Modem. Turn over the Modem to find the Passkey label. The Passkey is composed by 12 numbers and is unique.

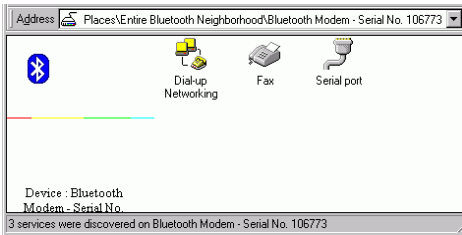


7. Click **Finish**.

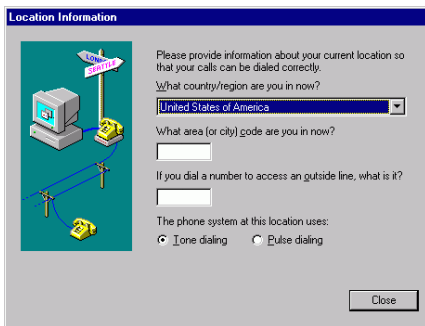
Internet Access

In Windows 98/ME

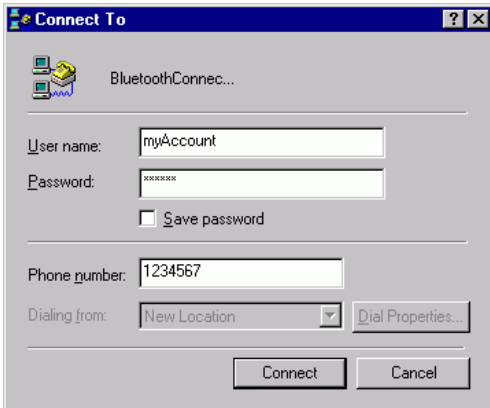
1. Double click **Dial-up Networking**.



2. Enter the Location Information.



3. Enter the information needed for Internet access.
4. Click **Connect**. You will be on the net once connected.

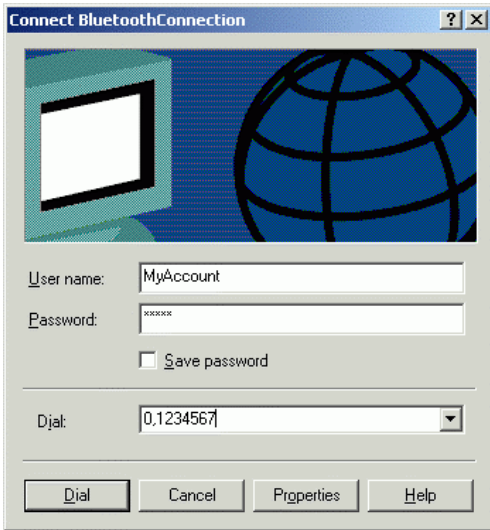


In Windows 2000

1. Double click **Dial-up Networking**.



2. Enter the information needed for Internet access.
3. Click **Connect**. You will be on the net once connected.



In Windows XP

1. Double click **Bluetooth Modem**.
2. Enter the information needed for Internet access.
3. Click **Dial**. You will be on the net once connected.

