



Quick Start Guide for Bluetooth™ Connection Kit



TABLE OF CONTENTS

Overview	Page 2
Installation Steps Summary	3
BASIC SETUP	
STEP 1: Install the Software	4
STEP 2: Insert the Card	6
STEP 3: Get Connected!	7
STEP 4: Dial-up Networking	11
OPTIONAL: ADVANCED FEATURES	
Turn Radio Transmitter On/Off	13
Set up Your Bluetooth Card	14
View Device Properties	15
Set up Your Favorite Device	16
Discover Bluetooth Device(s)	17
Bond with Discovered Device(s)	18
Change Views	19
Delete a Device from the Folder	19
OPTIONAL: BLUETOOTH DIALER	20
Warranty	21
Safety and Usage Tips	23

Technical Support

Back Cover

Overview

The Socket Bluetooth Connection Kit makes it easy to add Bluetooth wireless connectivity to a Windows Powered Pocket PC (including Pocket PC 2002s) or a Windows CE-based HPC 2000 or Handheld PC Pro. It's perfect for connecting any of these mobile computers wirelessly to your favorite Bluetooth phone or printer.



The Bluetooth Card is the only plug-in card to incorporate all Bluetooth components within the CompactFlash Type I form factor. With a CompactFlash-to-PC Card adapter, the Bluetooth Card also works in a PC Card (PCMCIA) slot. You can purchase adapters separately online at: www.esend.com/socket/product.asp?sku=AC4000%2D978

The Bluetooth Connection Kit includes a Bluetooth Card and Bluetooth software, including drivers, the Get Connected! Wizard, the Bluetooth Devices manager, and the Bluetooth Dialer.

For quickly connecting your mobile computer to a Bluetooth phone, use the Get Connected! Wizard. To connect to a non-phone device, use the advanced features found in the Bluetooth Devices manager. After connecting to a Bluetooth phone, you can use the Bluetooth Dialer to directly dial a number from your Contacts list.

This *Quick Start Guide* briefly shows how to install and use the Bluetooth Card. For more detailed information, including instructions on how to use the Bluetooth Card with a Bluetooth printer, refer to the *User's Guide*, in Adobe Acrobat PDF format in the *Docs* folder on the installation CD.

This guide primarily shows Pocket PC screens. Pocket PC 2002s, HPC 2000s and Handheld PC Pros will have functionally equivalent screens.

To register the kit, visit: <http://www.socketcom.com/product/prodreg.htm>
For software updates, please check: www.socketcom.com

Installation Steps Summary

It takes only four steps to install and use the Socket Bluetooth Card:

STEP 1: Install the software.

STEP 2: Insert the Bluetooth Card into your mobile computer.

STEP 3: Get Connected!

STEP 4: Dial-up networking.

This *Quick Start Guide* also covers several advanced features you can perform while installing and/or using the Bluetooth Card. You can also install and use the Bluetooth Dialer, which lets you dial a number directly from your Contacts folder.

OPTIONAL: ADVANCED FEATURES

- Set up your Bluetooth Card.
- Use the Bluetooth Devices manager.
 - View device properties.
 - Set up your favorite device.
 - Discover other Bluetooth device(s).
 - Bond with another Bluetooth device.
 - Change views.
 - Delete a device from your folder.



OPTIONAL: BLUETOOTH DIALER

- Install the dialer.
- Assign a dialing prefix.
- Dial a contact.

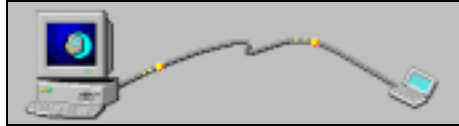
Note: There are some important safety and usage guidelines you should read before operating the Bluetooth Card. Please refer to the "Safety and Usage Tips" at the end of this Quick Start Guide.

For a more comprehensive overview, please refer to the User's Guide in Appendix B, "Safety and Usage Tips." The User's Guide is in Adobe Acrobat PDF format on the installation CD.

STEP 1: Install the Software

Follow these steps BEFORE inserting the Bluetooth Card:

1. Make an active partnership between the mobile computer and a host PC.



An active partnership exists if data can be moved between the mobile computer and the host PC via a serial/USB/Ethernet cable or cradle.

2. Insert the *Socket Bluetooth Card Installation CD* into the host PC.

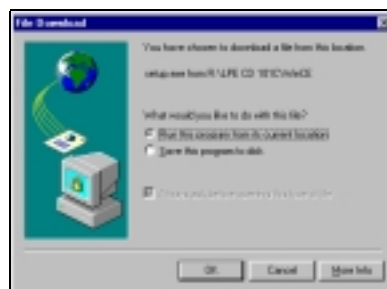


3. Run the SETUP.HTM or SETUP.EXE file on the CD-ROM, depending on what web browser your host PC uses by default.

IF YOUR DEFAULT WEB BROWSER IS INTERNET EXPLORER, run the SETUP.HTM file:

- (a) Click **Start** then **Run** on the host PC. Type **X: \SETUP .HTM** (Replace X with your CD drive letter.)
- (b) A **File Download** screen will appear. Select the option that lets you run (or open) the file from its current location.

***IMPORTANT! YOU MUST RUN THE FILE!
DO NOT SAVE THE PROGRAM TO DISK!***



File Download screen from Internet Explorer 5.5

- (c) A **Security Warning** screen will appear. Click **Yes**.

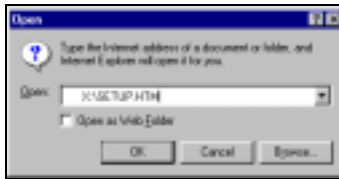
IF YOUR DEFAULT WEB BROWSER IS NETSCAPE, DO NOT run the SETUP.HTM file on Netscape, because it will not work properly. Instead, choose either of two options:

OPTION ONE: Use Internet Explorer to run the SETUP.HTM file.

(a) In the Internet Explorer screen, click **File | Open**.

(b) In the **Open** screen, type **X:\SETUP.HTM**

(Replace X with your CD drive letter.)



Open screen from Internet Explorer 5.5

(c) Proceed with the instructions described on the previous page for Internet Explorer.

OPTION TWO: Run the SETUP.EXE file.

Click on **My Computer** or use Windows Explorer to manually browse the CD to the WinCE directory and manually launch the **SETUP.EXE** file found there.

Important! Be sure to choose the SETUP.EXE file, NOT the SETUP.HTM file. The two file types have different icons:



EXE icon



HTM icon for Netscape

4. Follow the instructions on the host PC screen until setup is done.
5. In the **Dialog** screen, enter a name for your mobile computer. Tap **ok**.



6. Disconnect the mobile computer from the host computer. Soft reset the mobile computer. Push the reset button, often on the back of the unit.

STEP 2: Insert the Card

Important!

Do NOT insert the card upside down or shove the card in too hard. Damage may occur!

Insert the card into your mobile computer's slot. If using a PC Card slot, first insert the Bluetooth Card into a CompactFlash-to-PC Card adapter (available separately). Make sure the blue label is on top.

Insert the card directly into a CompactFlash I/O slot...




...or plug the card into an adapter for use in a PC Card slot.



When properly inserted, the card unit will be fully contained within the slot.


After the mobile computer recognizes the card, the following will occur:

- You will get a message warning against using Bluetooth on airplanes. Tap **OK**.
- The Bluetooth icon  will appear in the task tray (visible in the Today screen for Pocket PCs).

STEP 3: Get Connected!

The Get Connected! Wizard guides you through a one-time setup process that prepares the mobile computer and phone for Bluetooth connections. The wizard varies depending on what phone you want to connect to.

Ericsson, Nokia, Sony Phones

1. Tap on the Bluetooth task tray icon  (visible from the **Today** screen for Pocket PCs). In the pop-up menu, select **Get Connected!**
2. Follow the **Bluetooth "Get Connected!" Wizard**. In the welcome screen, use the drop-down list to select the type of phone you are using. The wizard will provide tailored instructions based on your selection.

Note: This example is for a Nokia phone. Your phone may differ.



3. As prompted, find out what kind of passkey system your phone uses.

Important! If your phone has a pre-assigned passkey, have it ready. (e.g., The passkey of a Nokia phone is on a label in the box and/or on the battery.)



- When the search is complete, list of the discovered Bluetooth phones will appear. Choose the phone you wish to connect to, and tap **Select**. A service discovery phase will begin, about 5-10 seconds.




- As prompted in the next screen, set your phone to “Bondable” or “Pairable” mode. For instructions, refer to your phone manual. Have your passkey ready, then tap **Next>**.
- In the next screen, enter the passkey. Tap **Reply**.



Note: Exchanging passkeys allows the phone and mobile computer to set up an encrypted data link for secure communications.

- Enter the same passkey into the mobile phone. The mobile phone may then either automatically accept the passkey or ask for you to enter one.
- Tap **Finish**. After successfully connecting, the phone will appear in the **Bluetooth Devices** folder. You will not need to run the Get Connected! Wizard again unless you plan to switch between different phones.

Motorola Timeport 270C

1. Tap on the Bluetooth task tray icon  (visible from the **Today** screen for Pocket PCs). In the pop-up menu, select **Get Connected!**
2. Follow the **Bluetooth "Get Connected!" Wizard**. In the welcome screen, use the drop-down list to select the Motorola Timeport 270C. The wizard will provide tailored instructions for this phone.



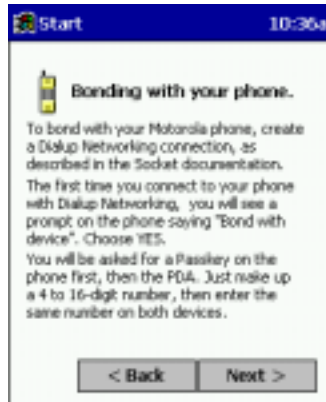
3. As directed in the next two screens, assign the phone a unique name and set the phone in Discoverable mode. Then tap **Next>**.
4. The mobile computer will begin to search for the phone. When the search is over, a list of the discovered Bluetooth phones will appear.



Choose the phone you wish to connect to, and tap **Select**. A service discovery phase will begin, about 5-10 seconds.

- The next two screens describe procedures you can only complete outside of the wizard. Read through each screen but do not complete the described procedures until you exit the wizard. Directions for these procedures are provided in *STEP 4: Dial-up Networking*, starting on the next page. The two procedures are:

Bonding with your phone — This must be completed in order to complete the Bluetooth connection and involves dial-up networking.



Automatic Connections — This procedure is optional but will make future Bluetooth connections more convenient.



- Continue to the last screen of the wizard and tap **Finish**. Now proceed to *STEP 4* to complete the bonding process and, if desired, set up automatic connections.

STEP 4: Dial-up Networking

Before setting up dial-up networking, prepare yourself with dial-up information and other necessary settings for your office network or ISP.

1. Pocket PC — Go to **Start | Settings | Connections | Modems**. In the next screen, tap **New Connection...**

Pocket PC 2002 — Go to **Start | Settings | Connections | Connections**. In the top field, select **Internet Settings**. Tap **Modify...** Tap **New...**

For help setting up dial-up networking, refer to the section for creating an ISP or network connection in your Pocket PC 2002's user guide.

HPC — Go to **Start | Programs | Communication | Remote Networking | Make New Connection**.

2. In the next screen(s), enter a name for the dial-up connection and select **Bluetooth Phone** for the modem.

On a Pocket PC, tap **Advanced...** or on a HPC, tap **Configure...**



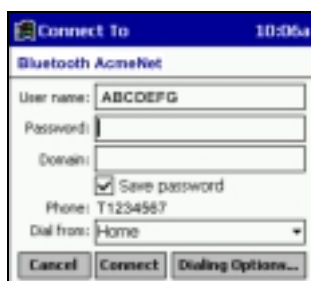
3. In the **Port Settings** screen, for **Flow Control**, select **None**. Enter any necessary settings for the network or ISP. On a Pocket PC, tap **OK**.



4. Complete the process for setting up the connection. When prompted, be sure to uncheck **Wait for dial tone before dialing** (this will be in the **Call Options** screen for HPCs). Enter dial-up information and any other necessary settings for your office network or ISP. When done, tap **Finish**.

5. Now you are ready to start the connection.

Pocket PC — Go to **Start | Programs | Connections**. Tap on the Bluetooth connection you just set up. Make sure the correct dialing information is entered, then tap **Connect**.



Pocket PC 2002 — When you return to the **Connections** screen, under **Internet Settings**, tap **Connect**. In the next screen, make sure the correct dialing information is entered. Tap **OK**.

HPC — Go to **Start | Control Panel | Remote Networking**. Tap on the Bluetooth connection you just set up. Make sure the correct dialing information is entered, then tap **Connect**.

6. **FOR MOTOROLA TIMEPORT 270C ONLY:**

*After you tap **Connect** for the first time, the phone will display a message asking if you want to bond. Enter **YES**. Make up a 4-8 digit passkey, enter it on the phone, then enter it on the mobile computer.*

After successfully bonding, you can set up the phone for automatic connections.


Automatic Connections for Motorola:

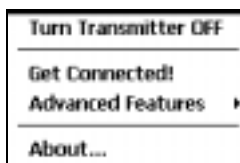
- On the phone, press **MENU**.
- Scroll to **Settings**, then press **SELECT**.
- Scroll to **Connection**, then press **ON**.
- On **Bluetooth Link**, press **SELECT**.
- Scroll to **Devices**, then press **SELECT**.
- Choose your mobile computer, then press **EDIT**.
- Scroll to **Access:Ask**, then press **CHANGE**.
- Scroll to **Automatic**, then press **SELECT**. Press **DONE**.

7. To use a different Bluetooth phone for dial-up networking, you can use the same connection setup, but you must make the new phone your favorite. Just run the **Get Connected! Wizard** again, select the new phone, and make it your new **Favorite** when prompted. Or you can use the Bluetooth Devices folder to change your favorite phone (see page 16).

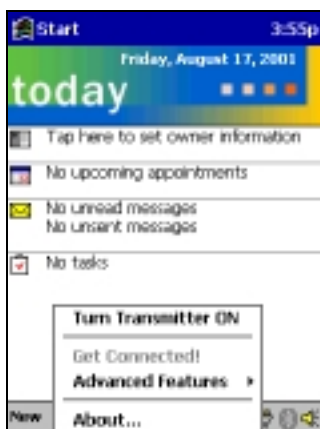
OPTIONAL: Turn Radio Transmitter ON/OFF

You may want to turn off the radio transmitter to save power or if you are entering an area with radio restrictions.

1. After you insert the Bluetooth Card, the Bluetooth icon  should appear in the task tray (visible from the **Today** screen for Pocket PCs). Tap on the icon.
2. In the pop-up menu, select **Turn Transmitter OFF**.




3. The Bluetooth Card radio transmitter will shut off. The Bluetooth icon in the task tray will become gray, as will relevant menu options (e.g., **Get Connected!**).

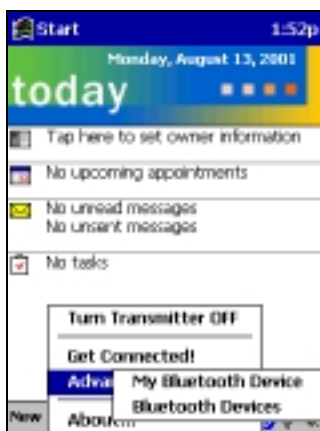


4. To turn the radio transmitter back on, in the pop-up-menu, select **Turn Transmitter ON**.

OPTIONAL: Set up Your Bluetooth Card

Note: If you use the Get Connected! Wizard, which is recommended for normal usage, then this step is not necessary. This step would be used to change the friendly name of your mobile computer.

1. After you insert the Bluetooth Card, the Bluetooth icon  should appear in the task tray (visible from the **Today** screen for Pocket PCs). Tap on the icon.
2. In the pop-up menu, select **Advanced Features**, then **My Bluetooth Device**.



3. In the **My Bluetooth Device** screen, enter a **Friendly Name** and make any desired configuration changes. When done, tap **OK**.



Note:


- *In normal phone connect operation, **Discoverable** mode is not needed and should be disabled.*
- *If you do enable **Discoverable** mode, note that it does not shut off by itself. To save power, remember to disable it when not needed.*
- ***Connectable**, **Bondable**, **Use Authentication**, and **Use Encryption** are also not required for printing or dial-up networking applications.*

OPTIONAL: View Device Properties

Follow these steps to view the properties of an already discovered device.

1. If not open, launch the **Bluetooth Devices** folder.
Tap on the Bluetooth icon (in the **Today** screen for Pocket PCs).
Select **Advanced Features** then **Bluetooth Devices**.
2. Tap and hold your stylus on the Bluetooth device you want to view information about. In the pop-up menu, select **Properties**.



Alternatively, after selecting a device, tap on the **Properties** icon , or tap on **Device** then select **Properties**.

3. Use the **General** and **Services** screens to configure and/or research device properties.

If needed, assign a new device type icon by tapping on the arrow buttons in the **General** screen. You can also use the **Device name** field to rename the device. When done, tap **ok**.



OPTIONAL: Set up Your Favorite Device

Follow these steps to set up a default device in the **Bluetooth Devices** folder. This is needed only if you want to set up a non-phone device as a favorite.

Note: If the folder has only one device, it will automatically be the favorite.

1. In the **Bluetooth Devices** folder, tap and hold your stylus on the device you wish to set as your favorite. In the pop-up menu, select **Set as Favorite**.



2. Alternatively, you can tap on **Tools** and select **My Favorites**. In the **My Favorite** screen, use the drop-down menu to select a default device.
3. After setting a device as your favorite, its icon will appear in the Bluetooth Devices folder with a heart next to it.



Note: The “favorite” device will be associated with the Bluetooth virtual COM port with the friendly name “Bluetooth Phone.” This would be used in the “Dial-up Networking” setup selection.

What if I can't connect to a device in the Bluetooth Devices folder, or I can't select it as my favorite?


You can connect to a device only if its services have been successfully discovered. Follow these steps to perform a service discovery:

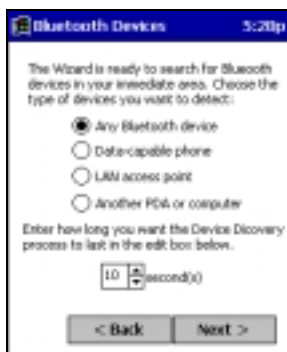
*With the device selected in the folder, tap on **Properties** , then select the **Services** tab. Tap the **Update** button.*

Please report any devices that you have problems discovering services for. Email askbluetooth@socketcom.com

OPTIONAL: Discover Bluetooth Device(s)

Follow these steps to discover other Bluetooth devices nearby, including non-phone devices. This is a more detailed alternative to using the Bluetooth “Get Connected!” Wizard, and it will allow you to discover both phone and non-phone devices.

1. If not open, launch the **Bluetooth Devices** folder:
Tap on the Bluetooth icon (in the **Today** screen for Pocket PCs).
Select **Advanced Features** then **Bluetooth Devices**.
2. In the **Bluetooth Devices Folder**, tap on the **Device Discovery** icon .
Or you can tap on **Tools**. In the pop-up menu, select **Device Discovery**.
3. Follow the **Bluetooth Device Discovery Wizard** to search for Bluetooth devices nearby. When prompted, select the device type you seek.



4. When the search is complete, a screen will report the discovered Bluetooth devices. Check the box next to any device you wish to save information about, (i.e., any devices you wish to connect to). Tap **Next**.



5. A service discovery phase will begin, 5-10 seconds per chosen device.
6. In the next screen, tap **Finish**.


OPTIONAL: Bond with Discovered Device(s)

Follow these steps to bond with an already discovered Bluetooth device. In most cases, bonding is for establishing secure communications with a Bluetooth-enabled phone. This is a more detailed alternative to using the Bluetooth “Get Connected! Wizard.”

Note: Do NOT attempt bonding with a Motorola Timeport 270C phone!

1. If not open, launch the **Bluetooth Devices** folder:
Tap on the Bluetooth icon (in the **Today** screen for Pocket PCs).
Select **Advanced Features**, then **Bluetooth Devices**.
2. Tap and hold your stylus on the Bluetooth device you want to bond with.
In the pop-up menu, select **Bond**.



3. Alternatively, after selecting a device, tap on the **Bond** icon .
Or tap on **Device**, then select **Bond**.
4. The **Bluetooth Device Bonding Wizard** will launch. Follow the wizard to bond with your selected device. As prompted, make sure the Bluetooth device that you want to bond with is in Bondable mode.
5. If the remote device is set up to accept bonding, a **Bluetooth Passkey** screen will appear. To continue bonding, enter the correct passkey and tap **Reply**.

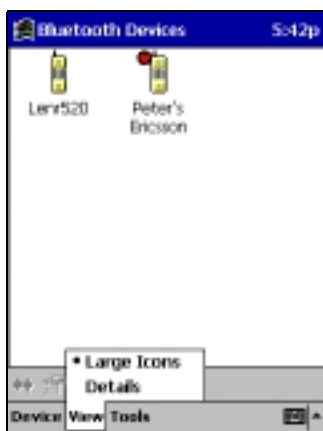


6. When you have successfully bonded with the other device, tap **Finish**.

OPTIONAL: Change Views

You can switch between the **Large Icons** or **Details** views for the **Bluetooth Devices** folder.

1. In **Bluetooth Devices**, tap on **View**.
2. In the pop-up menu, choose between **Large Icons** or **Details**.




Large Icons view



Details view

OPTIONAL: Delete a Device from the Folder

If you no longer plan to connect with it, you can delete a device from the **Bluetooth Devices** folder.

1. If not open, launch the **Bluetooth Devices** folder.
2. Tap and hold your stylus on the device you wish to delete. In the pop-up menu, select **Delete**.
3. Alternatively, after selecting a device, tap on the **Delete** icon . Or tap on **Device** then select **Delete**.
4. A **Confirm** screen will appear. Tap **Yes**.



OPTIONAL: Install and Use the Dialer

The dialer lets you dial a number directly from your Contacts list.

Installing the Dialer

If you have not already installed the dialer, follow these steps to do so:

1. Make an active partnership between the mobile computer and a host PC. Use a serial/USB/Ethernet cable or cradle.
2. Insert the *Socket Bluetooth Card Installation CD* into the host PC.
3. Go to **My Computer** and browse the installation CD for the **Dialer Installer** folder. Inside the folder, run the **SETUP . EXE** file.
4. Follow the instructions on your screen until installation is done.
5. Disconnect the mobile computer from your host computer. Soft reset the mobile computer.

Assigning a Dialing Prefix

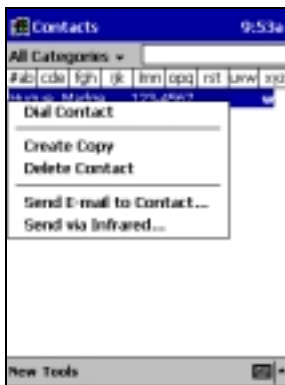
If you have not already assigned a dialing prefix, follow these steps to do so:

1. Go to **Start | Settings | System**. Tap on the **Bluetooth Dialer** icon.
2. Select the appropriate **Dialing Prefix**, then tap **ok**.



Using the Dialer

1. To use the dialer, the mobile computer must already be connected to the Bluetooth phone. You can use the Get Connected! Wizard to do this.
2. Go to **Start | Contacts**.
3. Tap and hold your stylus on the contact you wish to dial. In the pop-up menu, select **Dial Contact**. Or, tap on **Tools** and select **Dial Contact**.



4. If you have multiple phone numbers for the contact, a screen will appear listing the different numbers. Select the one you wish to dial.

5. The mobile computer will pass the contact number to the mobile phone via Bluetooth. The phone will begin dialing the number, which should appear on the phone display.

Limited Warranty

Socket Communications Incorporated (Socket) warrants this product against defects in material and workmanship, under normal use and service, for the following periods from the date of purchase:

Plug-in card: Three years

Incompatibility is not a defect covered by Socket's warranty. During the warranty period, Socket will, at its option, repair or replace the defective product at no charge when furnished with proof of retail purchase, provided that you deliver the product to Socket or to an authorized Socket Service Center.

The returned product must be accompanied by a return material authorization (RMA) number issued by Socket or by Socket's Authorized Service Center. If you ship the product, you must use the original container or equivalent and you must pay the shipping charges to Socket. Socket will pay shipping charges back to any location in the contiguous United States. This warranty applies only to the original retail purchaser and is not transferable.

Socket may, at its option, replace or repair the product with new or reconditioned parts and the returned product becomes Socket's property. Socket warrants the repaired or replaced products to be free from defects in material or workmanship for ninety (90) days after the return shipping date, or for the duration of the original warranty period, whichever is greater.

This warranty does not cover the replacement of products damaged by abuse, accident, misuse or misapplication, nor as a result of service or modification other than by Socket.

SOCKET IS NOT RESPONSIBLE FOR INCIDENTAL OR CONSEQUENTIAL DAMAGES RESULTING FROM BREACH OF ANY EXPRESS OR IMPLIED WARRANTY, INCLUDING DAMAGE TO PROPERTY AND, TO THE EXTENT PERMITTED BY LAW, DAMAGES FOR PERSONAL INJURY. THIS WARRANTY IS IN LIEU OF ALL OTHER WARRANTIES INCLUDING IMPLIED WARRANTIES OF MERCHANTABILITY AND FITNESS FOR A PARTICULAR PURPOSE.

Some states do not allow limitation of implied warranties, or the exclusion or limitation of incidental or consequential damages, so that the above limitations or exclusions may not apply to you. This warranty gives you specific legal rights and you may also have other rights which vary from state to state.

This product may contain fully tested, recycled parts, warranted as if new. For warranty information, phone (510) 744-2700.

Limited Software Warranty

LIMITED WARRANTY. SOCKET warrants that the original disk or CD ROM is free from defects for 90 days from the date of delivery of the SOFTWARE.

CUSTOMER REMEDIES. SOCKET'S entire liability and your exclusive remedy shall be, at SOCKET'S option, either (a) return of the price paid or (b) replacement of the SOFTWARE which does not meet SOCKET'S Limited Warranty and which is returned to SOCKET with a copy of your receipt. Any replacement SOFTWARE will be warranted for the remainder of the original warranty period or 30 days, whichever is longer. THESE REMEDIES ARE NOT AVAILABLE OUTSIDE OF THE UNITED STATES OF AMERICA.

NO OTHER WARRANTIES. SOCKET disclaims all other warranties, either express or implied, including but not limited to implied warranties of merchantability and fitness for a particular purpose, with respect to the SOFTWARE and the accompanying written materials. This limited warranty gives you specific legal rights. You may have others which vary from state to state.

NO LIABILITY FOR CONSEQUENTIAL DAMAGES. In no event shall SOCKET or its suppliers be liable for any damages whatsoever (including, without limitation, damages for loss of business profits, business interruption, loss of business information, or other pecuniary loss) arising out of the use of or inability to use the SOFTWARE, even if SOCKET has been advised of the possibility of such damages. Because some states do not allow the exclusion or limitation of liability for consequential or incidental damages, the above limitation may not apply to you.

EXPORT LAW ASSURANCES. You may not use or otherwise export or reexport the SOFTWARE except as authorized by United States law and laws of the jurisdiction in which the SOFTWARE was obtained. In particular, but without limitation, none of the SOFTWARE may be used or otherwise exported or reexported (a) into (or to a national or resident of) a United States embargoed country or (b) to anyone on the U.S. Treasury Department's list of Specially Designated Nationals or the U.S. Department of Commerce's Table of Denial Orders. By using the SOFTWARE, you represent and warrant that you are not located in, under control of, or a national or resident of any such country or on any such list.

GOVERNMENT END USERS. If the SOFTWARE is supplied to the U. S. Government, the SOFTWARE is classified as "restricted computer software" as defined in clause 52.227-19 of the FAR. The U. S. Government 's rights to the SOFTWARE are as provided in clause 52.227-19 of the FAR.

CONTROLLING LAW AND SEVERABILITY. This License shall be governed by the laws of the United States and the State of California. If for any reason a court of competent jurisdiction finds any provision, or portion thereof, to be unenforceable, the remainder of this License shall continue in full force and effect.

Regulatory Compliance

The Socket Bluetooth Card is designed to be compliant with the rules and regulations in locations where they are sold and will be labeled as required. This product is type approved — users are not required to obtain license or authorization before using.

Radio Frequency Interference Requirements

This device complies with part 15 of the FCC rules. Operation is subject to the following conditions: (1) This device may not cause harmful interference, and (2) this device must accept any interference received, including interference that may cause undesired operation.

This equipment is also ETS 300 328, ETS 300 826 and C-TICK compliant. These limits are designed to provide reasonable protection against harmful interference when the equipment is operated in a commercial environment.

This equipment generates, uses, and can radiate radio frequency energy and, if not installed and used in accordance with the instruction manual, may cause harmful interference to radio communications. This device and its antenna must not be co-located or operated with any other antenna or transmitter.

This equipment generates and radiates radio-frequency energy. To comply with FCC RF exposure compliance requirements, the following antenna installation and device operating configurations must be satisfied: (1) Users are not permitted to make changes or modify the system in any way, and (2) connecting external antennas to the card is prohibited. Operation of this equipment in a residential area is likely to cause harmful interference, in which case the user will be required to correct the interference at his or her own expense.

If this equipment does cause harmful interference to radio or television reception, which can be determined by turning the equipment off and on, the user may try to correct the interference by one or more of the following measures:

- Reorient or relocate the receiving antenna of the radio or television.
- Increase the distance separating the equipment and the receiver.
- Connect the equipment to an outlet on a different branch circuit than that of the receiver.
- Consult the dealer or an experienced radio/TV technician for help.

The user may find the following booklet helpful: *How to Identify and Resolve Radio-TV Interference Problems*. This booklet is available from the U.S. Government Printing Office, Washington, D.C. 20402.

Radio Frequency Interference Requirements – Canada

This Class B digital apparatus meets the requirements of the Canadian Interference-Causing Equipment Regulations. Cet appareil numérique de la Classe B respecte toutes les exigences du Règlement sur le Matériel Brouilleur du Canada.

NOTE: To comply with FCC and Industry Canada exposure requirements, this device is approved for operations in a user's hand when there is a distance of 20 cm or more between the device antenna and the user's body.

CE Marking & European Union Compliance

Products intended for sale within the European Union are marked with a CEMark which indicates compliance to applicable Directives and European Normes (EN), as follows. Amendments to these Directives or ENs are included: Normes (EN), as follows:

Applicable Directives:

- Electromagnetic Compatibility Directive 89/336/EEC
- Low Voltage Directive 73/23/EEC

Applicable Standards:

- EN 55 022 – Limits and Methods of Measurement of Radio Interference Characteristics of Information Technology Equipment.
- EN 50 082-1 – Electromagnetic Compatibility – General Immunity Standard, Part 1: Residential, Commercial, Light Industry.
- IEC 801.2 – Electromagnetic Compatibility for Industrial Process Measurement and Control Equipment, Part 2: Electrostatic Discharge Requirements.
- IEC 801.3 – Electromagnetic Compatibility for Industrial Process Measurement and Control Equipment, Part 3: Radiated Electromagnetic Field Requirements.
- IEC 801.4 - Electromagnetic Compatibility for Industrial Process Measurement and Control Equipment, Part 4: Electrical Fast Transients Requirements.
- EN 60 950 + Amd 1 + Amd 2 – Safety of Information Technology Equipment Including Business Equipment.

Safety and Usage Tips

Please follow these guidelines while operating the Bluetooth Card:

Antenna Care and Efficient Use

Do not place a metallic shield around your Bluetooth Card since it will reduce the radio transmission efficiency.

Driving

RF energy may affect some electronic systems in motor vehicles, such as car stereo, safety equipment, etc. Check with your vehicle manufacturer's representative to be sure that your Bluetooth Card will not affect the electronic system in your vehicle.

Aircraft

- Turn off your Bluetooth Card antenna before boarding any aircraft.
- To prevent interference with communications systems, you must not use your Bluetooth Card while the plane is in the air.
- Do not use it on the ground without permission from the crew.

Technical Support

If you have trouble installing or using the Bluetooth Card, please refer to the “Troubleshooting” section in the *User’s Guide* in the *Docs* folder on the *Socket Bluetooth Card Installation CD*.

If you still have trouble, contact Socket’s technical support department prepared with the following information:

- The part number (with revision level) and serial number of the card.
- The manufacturer, model number, and Windows CE version of your mobile computer
- What you did to try to correct the problem



To reach Socket’s technical support department:

- Visit www.socketcom.com
- Email techsupport@socketcom.com
- Phone 510-744-2720
- Fax 510-744-2727

Please refrain from disassembling the CompactFlash card. Disassembly of this device will void the product warranty.

© Copyright 2001 Socket Communications, Inc. The Bluetooth Card includes technology licensed under United States Patent Nos. 4,543,450, 4,603,320, and 4,972,470. Bluetooth and the Bluetooth logos are trademarks owned by Bluetooth SIG, Inc., U.S.A. and licensed to Socket Communications, Inc.



6430-00180 C

Printed in U.S.A.